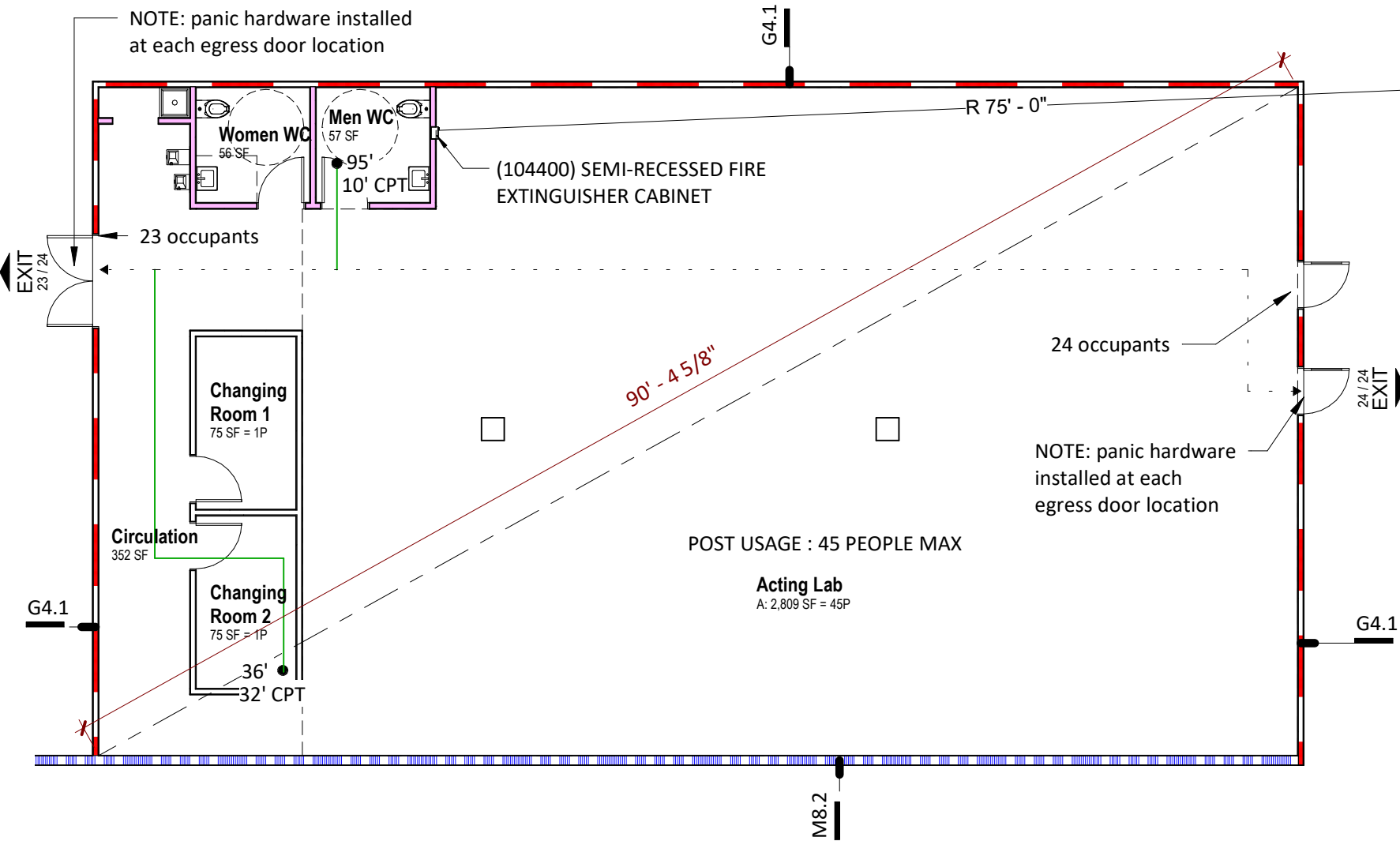




Occupant Load Schedule - Working				
Number	Name	Area	Occupancy Use	Max Occupancy
101	Acting Lab	2,809 SF	ACTING LAB	45
102	Circulation	352 SF		
103	Changing Room 1	75 SF		1
104	Changing Room 2	75 SF		1
105	Women WC	56 SF	* NON-SIMULTANEOUS USE COMMON AREA	
106	Men WC	57 SF	* NON-SIMULTANEOUS USE COMMON AREA	
Grand total: 6		3,424 SF		47

Plumbing Fixture Schedule			
Room Name	Fixture	Required	Count
Level 1			
Circulation	Drinking Fountain (Double)	1	1
Circulation	Service Sinks	1	1
Men WC	SINK	1	1
Men WC	WATER CLOSET	1	1
Women WC	SINK	1	1
Women WC	WATER CLOSET	1	1



Code Plan Legend:	
Egress Path of Travel	Distance to Exit 100'
Common Path of Travel Distance	50' CPT
Egress Point	EXIT
Maximum # of Occupants (by width)	100 / 50
Required # of Occupants	
Stair Egress	Stair #1   4'-0"
Maximum # of Occupants (by width)	28/14
Required # of Occupants	
Occupancy Tag	Room name
Occupancy Group	B: 200 SF = 2P
Area	
Occupant Load	
Fire Extinguisher Radius	75' Typ
1-Hour: Fire Rated Assembly	
2-Hour: Fire Rated Assembly	
3-Hour: Fire Rated Assembly	
4-Hour: Fire Rated Assembly	
Smoke Barrier	
Smoke Partition	

GOULD EVANS #  
0220-4600

PROJECT TYPE  
NEW CONSTRUCTION

**gouldevans**

GOULD EVANS  
4200 Pennsylvania Ave,  
Kansas City, MO 64111

SUMMIT THEATRE GROUP

**RENOVATION**

DATE: 01/21/2021

DRAWN BY: LA

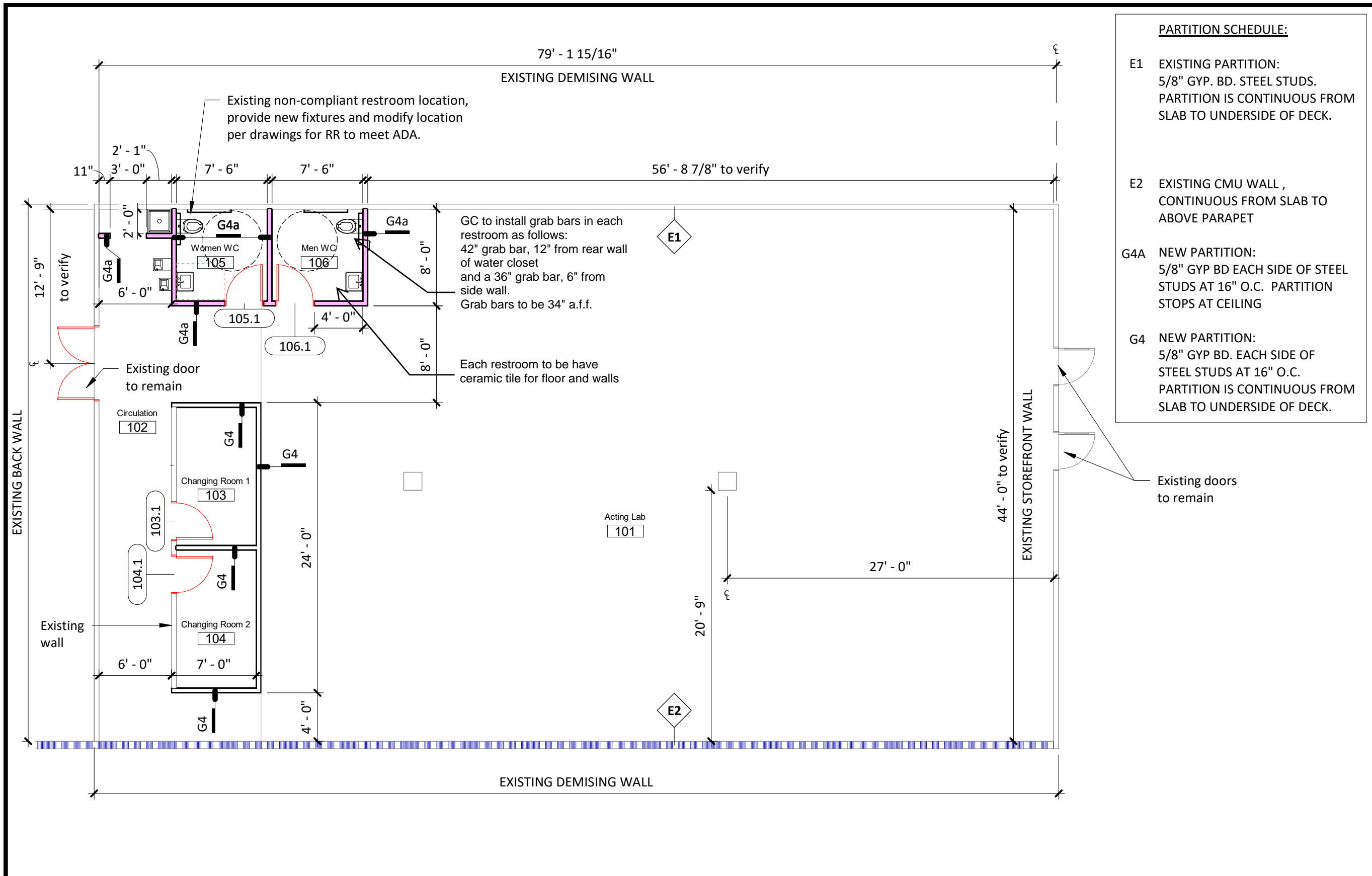
CHECKED BY: SZ

REV:

STATE OF MISSOURI  
DAVID LAWRENCE  
REGISTERED ARCHITECT  
2/21/2021

2/4

CODE PLAN



- PARTITION SCHEDULE:**
- E1 EXISTING PARTITION:  
5/8" GYP. BD. STEEL STUDS.  
PARTITION IS CONTINUOUS FROM  
SLAB TO UNDERSIDE OF DECK.
  - E2 EXISTING CMU WALL ,  
CONTINUOUS FROM SLAB TO  
ABOVE PARAPET
  - G4A NEW PARTITION:  
5/8" GYP BD EACH SIDE OF STEEL  
STUDS AT 16" O.C. PARTITION  
STOPS AT CEILING
  - G4 NEW PARTITION:  
5/8" GYP BD. EACH SIDE OF  
STEEL STUDS AT 16" O.C.  
PARTITION IS CONTINUOUS FROM  
SLAB TO UNDERSIDE OF DECK.

**GOULD EVANS #**  
0220-4600

**PROJECT TYPE**  
NEW CONSTRUCTION

**GOULD EVANS**  
4200 Pennsylvania Ave,  
Kansas City, MO 64111

**SUMMIT THEATRE GROUP**

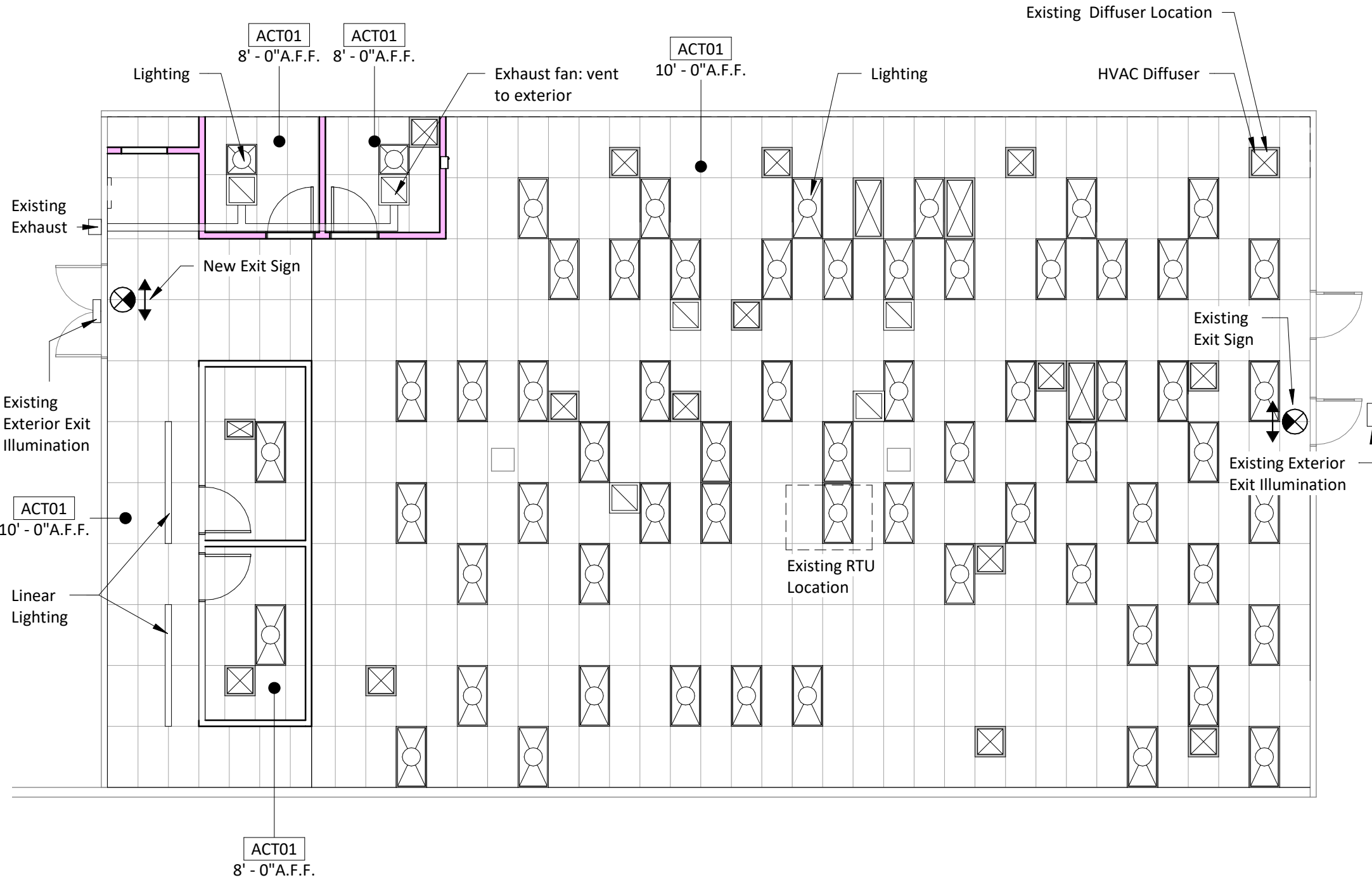
**RENOVATION**

DATE:	DRAWN BY:	CHECKED BY:	REV:
01/21/2021	LA	SZ	

3/4

**FLOOR PLAN**

Level 1 - New Plan 2  
1/8" = 1'-0"



REFLECTED CEILING PLAN NOTES:

- 1. Light fixture and diffusers indicate their current locations, unless noted otherwise.
- 2. All exit signs & emergency lighting to have internal battery backup, verify operation and replace if necessary.
- 3. Contractor to verify emergency lighting to insure minimum of 1 footcandle along egress path. Add wallpack fixture at each exit (outside) if necessary.
- 4. Existing mechanical system is supplied by a central roof top unit, location indicated on ceiling plan.
- 5. Adjust the existing rooftop unit outside air damper to provide 800 cfm of outside air.  
Ventilation Summary:  
Existing unit: 10 ton unit. 800 cfm outside air.  
OA required = 10cfm/person + area \*.06  
OA required = 10cfm/64 + 2548\*.06  
OA required = 645 + 153 = 798  
Based upon these calculations, the maximum occupancy with the existing RTU is 64.
- 6. The existing HVAC system uses ducted supply and return.  
No plenum return is utilized.
- 7. Exhaust Fan: Duct to existing exterior exhaust.

Ceiling Plan Legend

- 2x4 Light
- Existing Supply Air Diffuser
- Existing Return Air Diffuser

NOTE: LIGHTING INDICATES EXISTING LOCATIONS

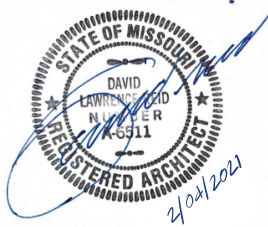
GOULD EVANS #  
0220-4600

PROJECT TYPE  
NEW CONSTRUCTION

gouldevans

GOULD EVANS  
4200 Pennsylvania Ave,  
Kansas City, MO 64111

SUMMIT THEATRE GROUP  
RENOVATION



DATE: 01/21/2021  
DRAWN BY: LA  
CHECKED BY: SZ  
REV: