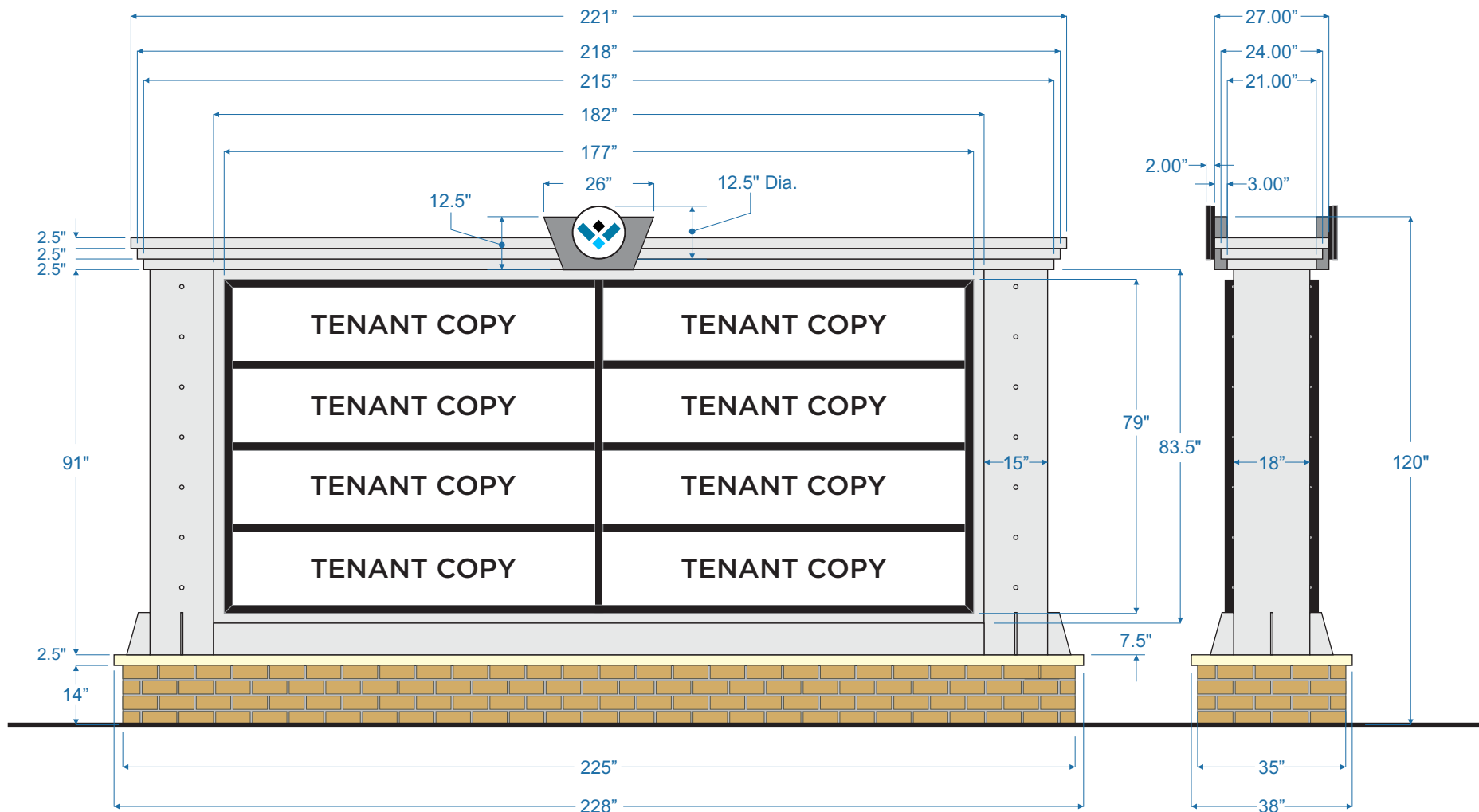


**ELECTRICAL POWER (BY OTHERS) TO BE RUN WITHIN 3 FT. OF SIGN INSTALL LOCATION BEFORE INSTALL CAN BEGIN.**



**NOTE:**  
**LOT 02 Monument**

## ILLUMINATED D/S MULTI-TENANT MONUMENT SIGN (EXTERIOR)

- Qty: (1) One Total Double-sided Illuminated Monument sign.
- Welded Aluminum framework, with painted Alum. skins.
- Tenant Panels removable for Name changes.
- Main Tenant Cabinet painted BLACK.
- Illumination via Internally-mounted WHITE LED's, (Tenant Panels/ Logo are illuminated).
- Circular Logo: WHITE Acrylic Face w/ colored Vinyl, BLACK Trimcap, BLACK Returns.
- Wedge-shaped Decorative gussets: 1/2 Acrylic, painted METALLIC SILVER.
- Side columns/ Tiered Topper painted METALLIC SILVER.
- Keystone-shaped Aluminum box painted MEDIUM GREY.
- Decorative Buttons: 1" Dia. Plastic, painted METALLIC SILVER.
- Brick/ Mortar Joints/ Capstone: Painted Faux HDU.

Drawing Prepared by:

Location: Project #:

Loc #

Filename:

Streets of West Pryor Lot 02 Monument Sign Lee's Summit Rev01

Drawing Prepared for:

[illegible]