

 THIS SIGN IS INTENDED TO BE INSTALLED IN ACCORDANCE WITH ARTICLE 600 OF THE NATIONAL ELECTRICAL CODE AND/OR OTHER APPLICABLE LOCAL CODES. THIS INCLUDES PROPER GROUNDING & BONDING OF THE SIGN. SIGN WILL BEAR UL LABEL(S).





Design #

0626447AR3

Sheet 2 of 10

Client

#

Address

SWC Douglas St - St Lukes Blvd,
Lee's Summit, MO

Acct. Rep. DEBBIE MOLTZ
Coordinator LAUREN STACKHOUSE

Designer IH

Date 8/6/20

Approval / Date

Client

Sales

Estimating

Art

Engineering

Landlord

Revision/Date

R1(8-7-20)H: Delete raceways from channel letters.
(not allowed by City)

R2(1-11-21)H: Change orange LEDs to white. Update
package.

R3(1-13-21)H: Update site plan & elevations per latest
set of plans. Ensure plan for placement of menuboards
is shown accurately



chandlersigns.com

National Headquarters 14201 Sovereign Road #101
Fort Worth, TX 76155
(214) 902-2000 Fax (214) 902-2044

San Antonio 17319 San Pedro Ave
Ste 200
San Antonio, TX 78232
(210) 349-3804 Fax (210) 349-8724

West Coast 3220 Executive Ridge Dr
Ste 250
Vista, CA 92081
(760) 734-1708 Fax (760) 734-3752

Northeast US 2301 River Road
Suite 201
Louisville, KY 40206
(502) 897-9800 Cell (502) 554-2575

Florida 2584 Sand Hill Point Circle
Davenport, FL 33837
(863) 426-1100 Fax (863) 424-1160

Georgia 111 Woodstone Place
Dawsonville, GA 30534
(678) 725-8852 Fax (210) 349-8724

South Texas PO BOX 125 206 Doral Drive
Portland, TX 78374
(961) 563-5599 Fax (361) 643-6533

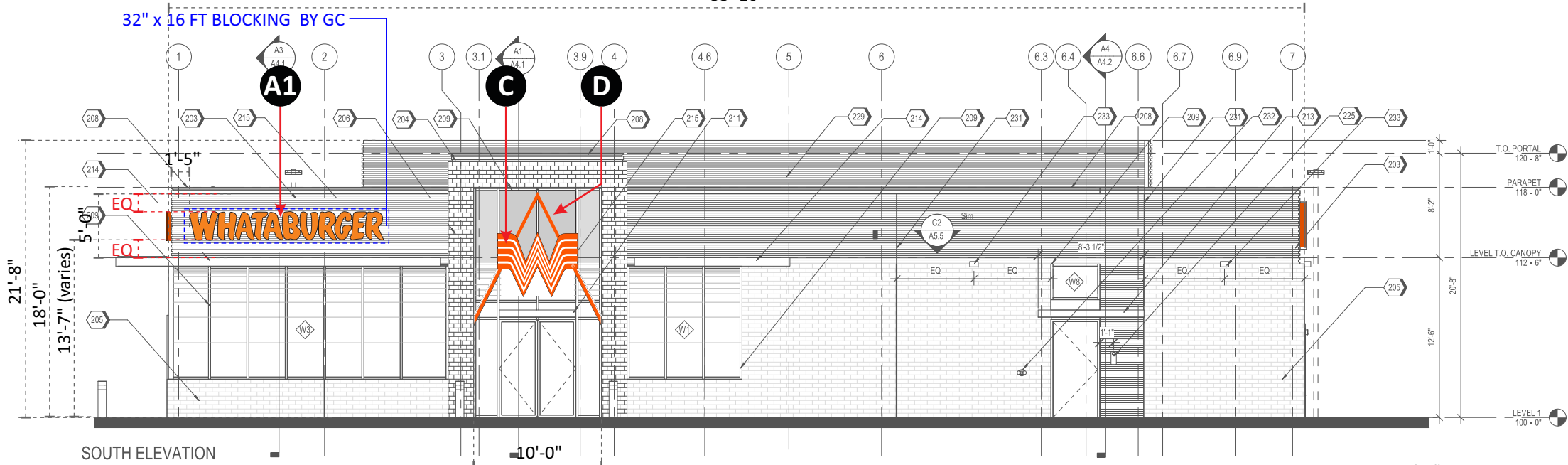
This drawing is the property of
Chandler Signs, LLC.
All rights to its use for reproduction
are reserved by Chandler Signs, LLC

FINAL ELECTRICAL
CONNECTION BY
CUSTOMER

THIS SIGN IS INTENDED TO BE INSTALLED
IN ACCORDANCE WITH ARTICLE 600 OF THE
NATIONAL ELECTRICAL CODE AND/OR OTHER
APPLICABLE LOCAL CODES. THIS INCLUDES
PROPER GROUNDING & BONDING OF THE SIGN.
SIGN WILL BEAR UL LABEL(S).

88'-10"

32" x 16 FT BLOCKING BY GC

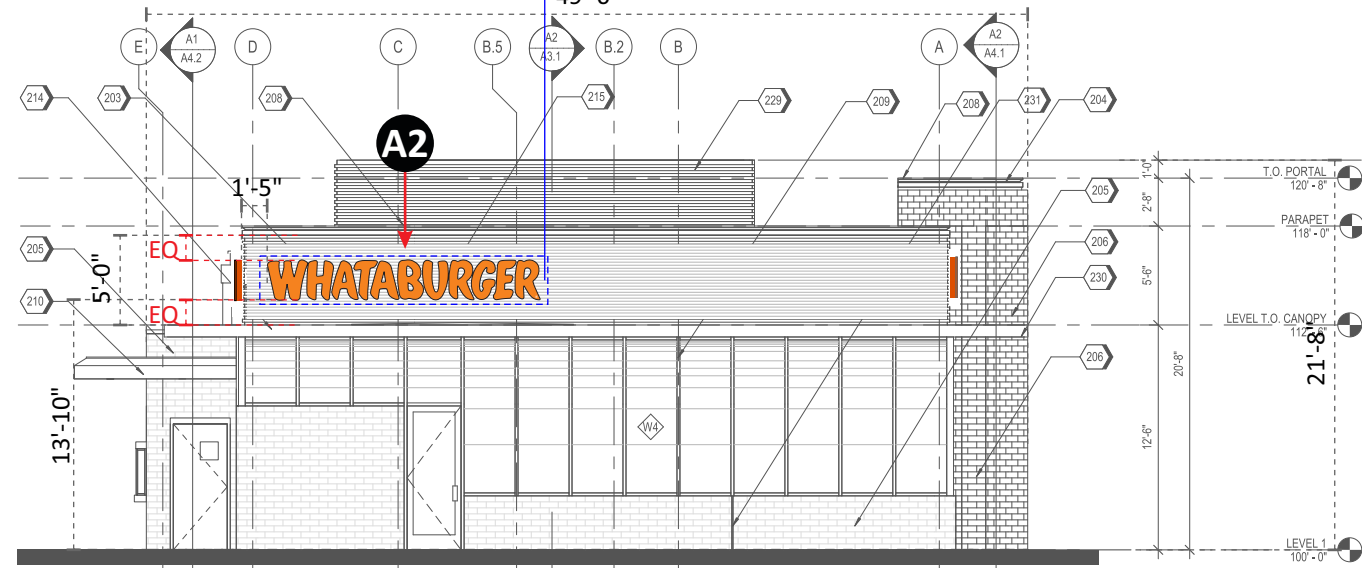


KEYNOTES	
KEYNOTE LEGEND	
1	BRICK
2	BRICK
3	BRICK
4	BRICK
5	BRICK
6	BRICK
7	BRICK
8	BRICK
9	BRICK
10	BRICK
11	BRICK
12	BRICK
13	BRICK
14	BRICK
15	BRICK
16	BRICK
17	BRICK
18	BRICK
19	BRICK
20	BRICK
21	BRICK
22	BRICK
23	BRICK
24	BRICK
25	BRICK
26	BRICK
27	BRICK
28	BRICK
29	BRICK
30	BRICK
31	BRICK
32	BRICK
33	BRICK
34	BRICK
35	BRICK
36	BRICK
37	BRICK
38	BRICK
39	BRICK
40	BRICK
41	BRICK
42	BRICK
43	BRICK
44	BRICK
45	BRICK
46	BRICK
47	BRICK
48	BRICK
49	BRICK
50	BRICK
51	BRICK
52	BRICK
53	BRICK
54	BRICK
55	BRICK
56	BRICK
57	BRICK
58	BRICK
59	BRICK
60	BRICK
61	BRICK
62	BRICK
63	BRICK
64	BRICK
65	BRICK
66	BRICK
67	BRICK
68	BRICK
69	BRICK
70	BRICK
71	BRICK
72	BRICK
73	BRICK
74	BRICK
75	BRICK
76	BRICK
77	BRICK
78	BRICK
79	BRICK
80	BRICK
81	BRICK
82	BRICK
83	BRICK
84	BRICK
85	BRICK
86	BRICK
87	BRICK
88	BRICK
89	BRICK
90	BRICK
91	BRICK
92	BRICK
93	BRICK
94	BRICK
95	BRICK
96	BRICK
97	BRICK
98	BRICK
99	BRICK
100	BRICK

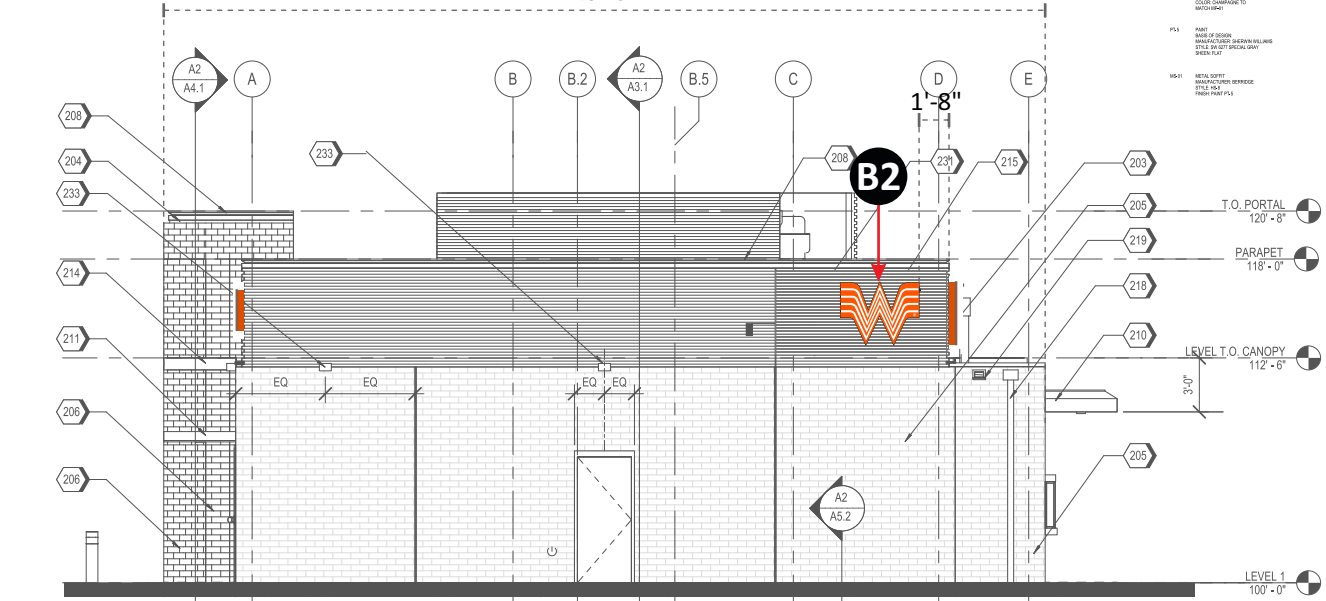
CODE TO EXTERIOR MATERIALS

EQ-1	BRICK
EQ-2	BRICK
EQ-3	BRICK
EQ-4	BRICK
EQ-5	BRICK
EQ-6	BRICK
EQ-7	BRICK
EQ-8	BRICK
EQ-9	BRICK
EQ-10	BRICK
EQ-11	BRICK
EQ-12	BRICK
EQ-13	BRICK
EQ-14	BRICK
EQ-15	BRICK
EQ-16	BRICK
EQ-17	BRICK
EQ-18	BRICK
EQ-19	BRICK
EQ-20	BRICK
EQ-21	BRICK
EQ-22	BRICK
EQ-23	BRICK
EQ-24	BRICK
EQ-25	BRICK
EQ-26	BRICK
EQ-27	BRICK
EQ-28	BRICK
EQ-29	BRICK
EQ-30	BRICK
EQ-31	BRICK
EQ-32	BRICK
EQ-33	BRICK
EQ-34	BRICK
EQ-35	BRICK
EQ-36	BRICK
EQ-37	BRICK
EQ-38	BRICK
EQ-39	BRICK
EQ-40	BRICK
EQ-41	BRICK
EQ-42	BRICK
EQ-43	BRICK
EQ-44	BRICK
EQ-45	BRICK
EQ-46	BRICK
EQ-47	BRICK
EQ-48	BRICK
EQ-49	BRICK
EQ-50	BRICK
EQ-51	BRICK
EQ-52	BRICK
EQ-53	BRICK
EQ-54	BRICK
EQ-55	BRICK
EQ-56	BRICK
EQ-57	BRICK
EQ-58	BRICK
EQ-59	BRICK
EQ-60	BRICK
EQ-61	BRICK
EQ-62	BRICK
EQ-63	BRICK
EQ-64	BRICK
EQ-65	BRICK
EQ-66	BRICK
EQ-67	BRICK
EQ-68	BRICK
EQ-69	BRICK
EQ-70	BRICK
EQ-71	BRICK
EQ-72	BRICK
EQ-73	BRICK
EQ-74	BRICK
EQ-75	BRICK
EQ-76	BRICK
EQ-77	BRICK
EQ-78	BRICK
EQ-79	BRICK
EQ-80	BRICK
EQ-81	BRICK
EQ-82	BRICK
EQ-83	BRICK
EQ-84	BRICK
EQ-85	BRICK
EQ-86	BRICK
EQ-87	BRICK
EQ-88	BRICK
EQ-89	BRICK
EQ-90	BRICK
EQ-91	BRICK
EQ-92	BRICK
EQ-93	BRICK
EQ-94	BRICK
EQ-95	BRICK
EQ-96	BRICK
EQ-97	BRICK
EQ-98	BRICK
EQ-99	BRICK
EQ-100	BRICK

32" x 16 FT BLOCKING BY GC



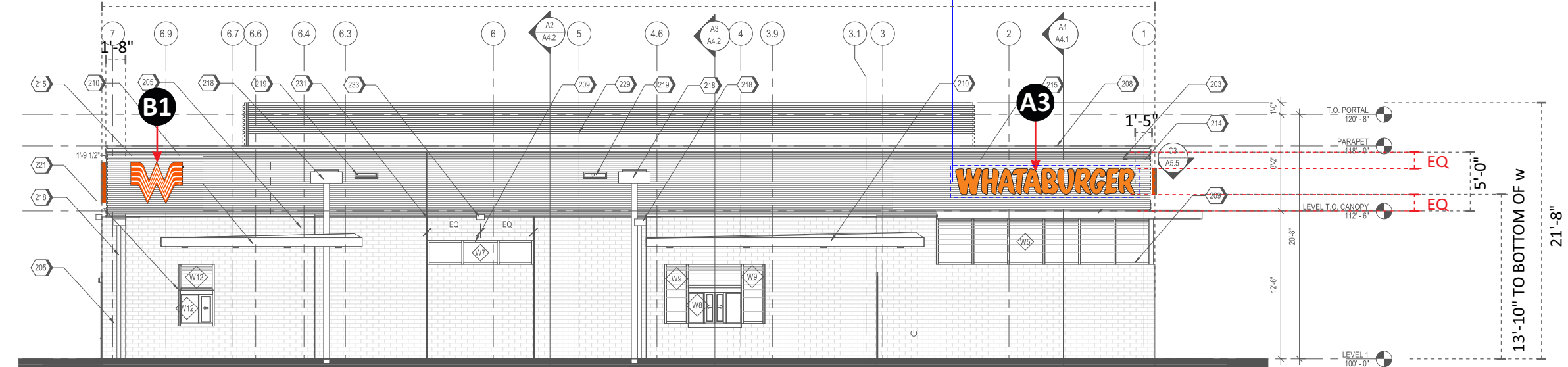
49'-0"



EAST ELEVATION

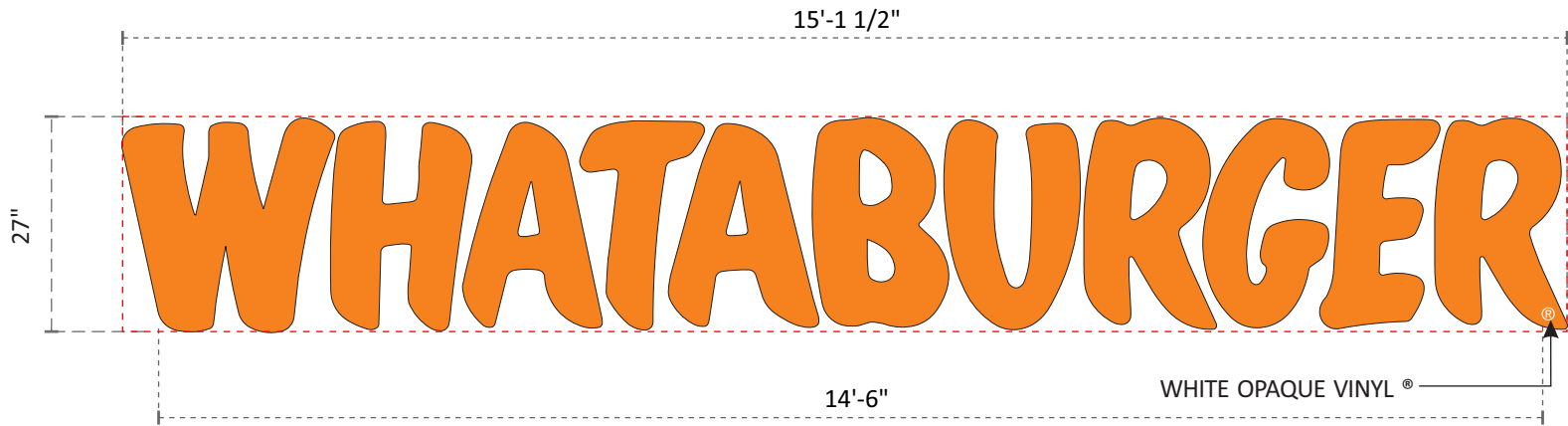
88'-11"

32" x 16 FT BLOCKING BY GC



NORTH ELEVATION

SCALE 3/32" = 1'-0"



A1 A2 A3

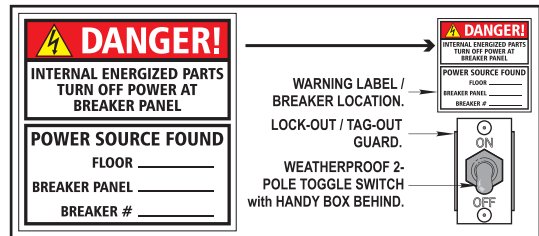
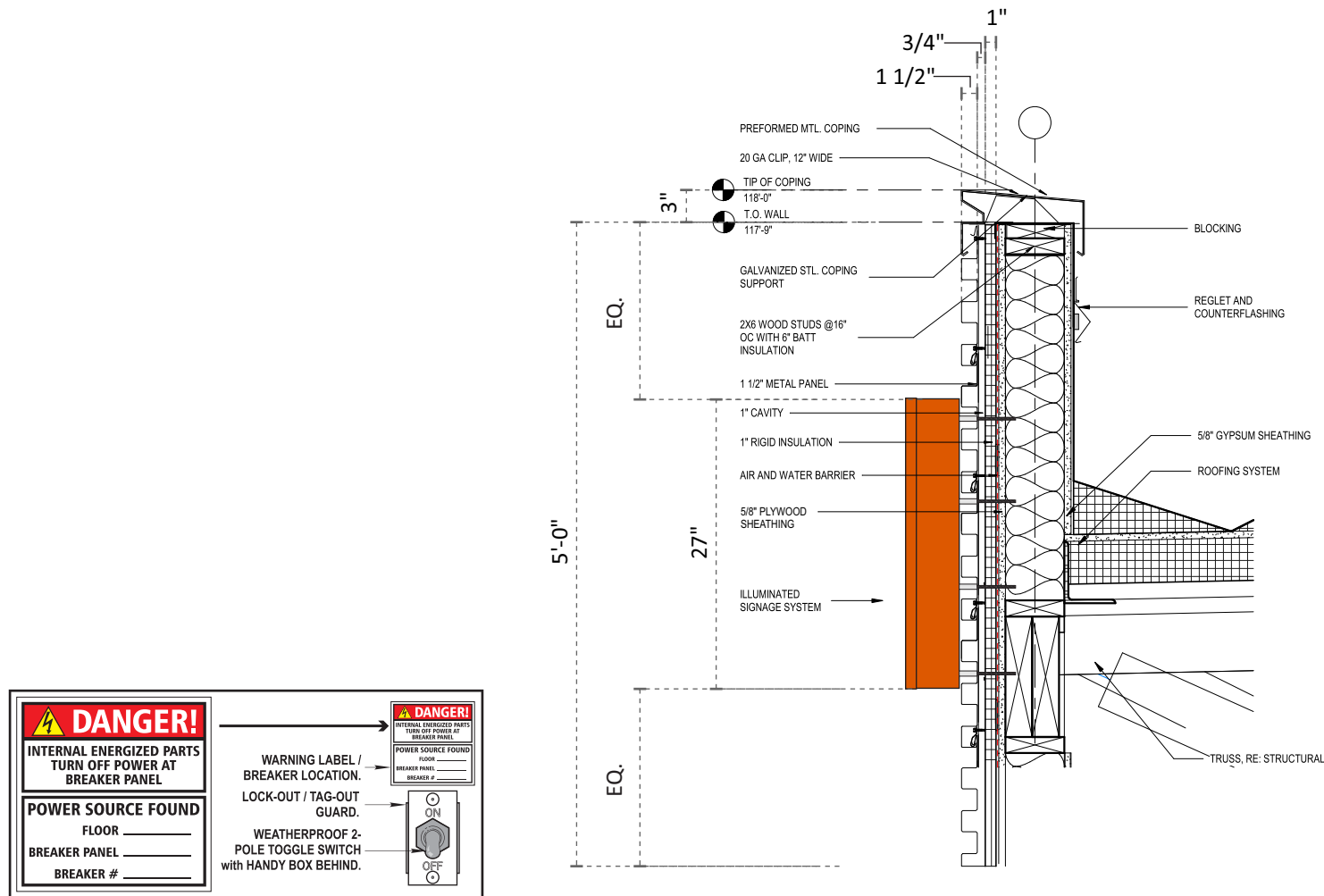
27" PCL

THREE (3) SETS REQUIRED - MANUFACTURE AND INSTALL

SCALE 1/2"=1'-0"

34 SQ. FT.

NOTE: PRIMARY ELECTRICAL PROVIDED BY G.C. WILL BE BELOW ROOFLINE. GC WILL PROVIDE 5/8" PLYWOOD BLOCKING BEHIND THE CORRUGATED PANELS.

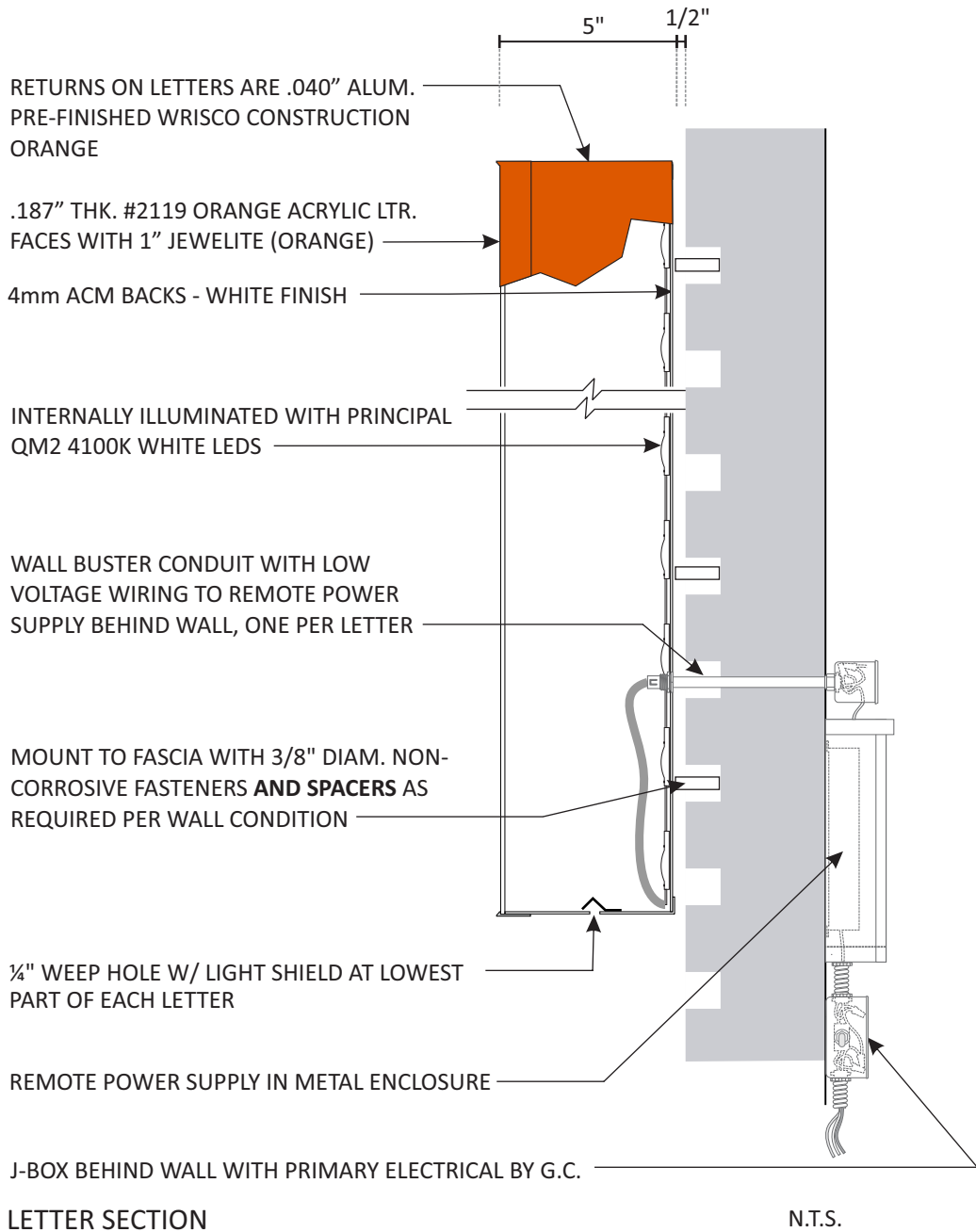


2014 / 2017 NEC COMPLIANT SWITCH / LABEL

METAL PANEL WALL PARAPET

SCALE: 3/4" = 1'-0"

RACEWAYS ARE NOT PERMITTED PER CITY CODE.



INSTALLATION NOTE: VERIFY ACCESS BEHIND WALL FOR LOCATION OF REMOTE POWER SUPPLY FOR INSTALL AND FUTURE SERVICE.



Design #

0626447AR3

Sheet 3 of 10

Client

#

Address

**SWC Douglas St - St Lukes Blvd,
Lee's Summit, MO**

Acct. Rep. DEBBIE MOLTZ
Coordinator LAUREN STACKHOUSE

Designer IH

Date 8/6/20

Approval / Date

Client	
Sales	
Estimating	
Art	
Engineering	
Landlord	

Revision/Date

R1(8-7-20)IH: Delete raceways from channel letters.
(not allowed by City)
R2(1-11-21)IH: Change orange LEDs to white. Update package.
R3(1-13-21)IH: Update site plan & elevations per latest set of plans. Ensure plan for placement of menuboards is shown accurately

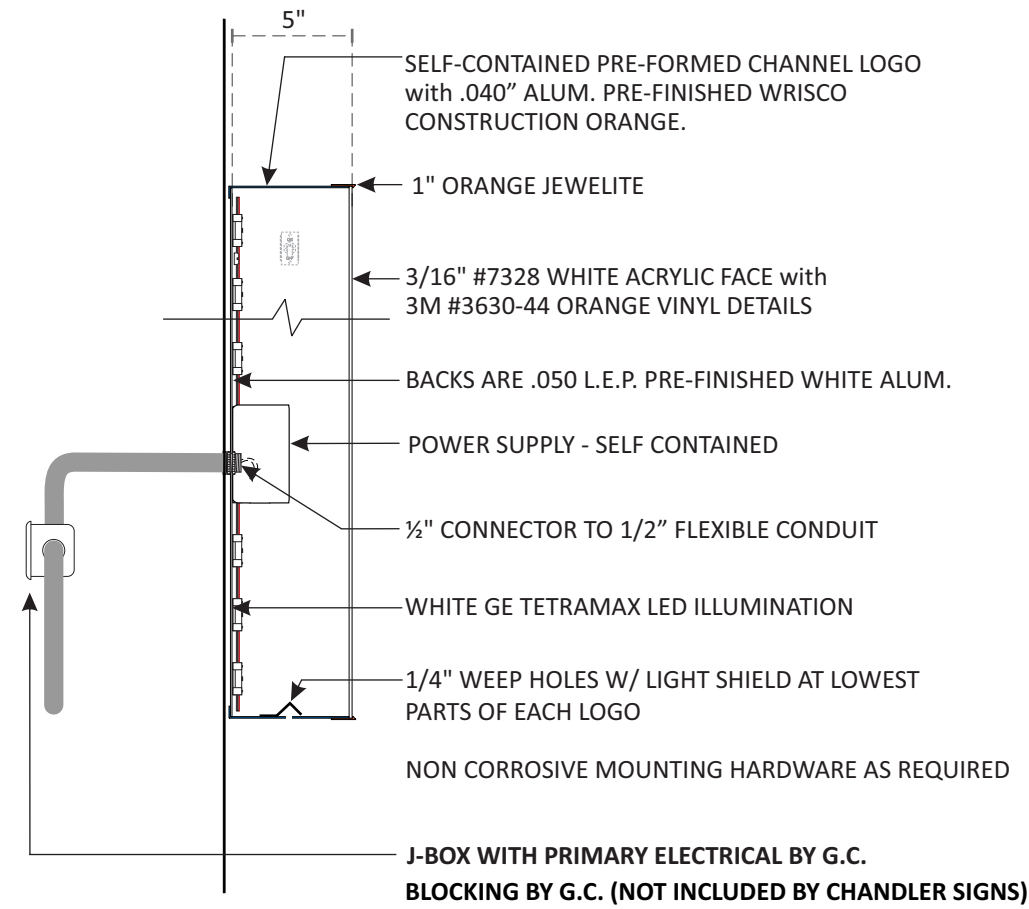
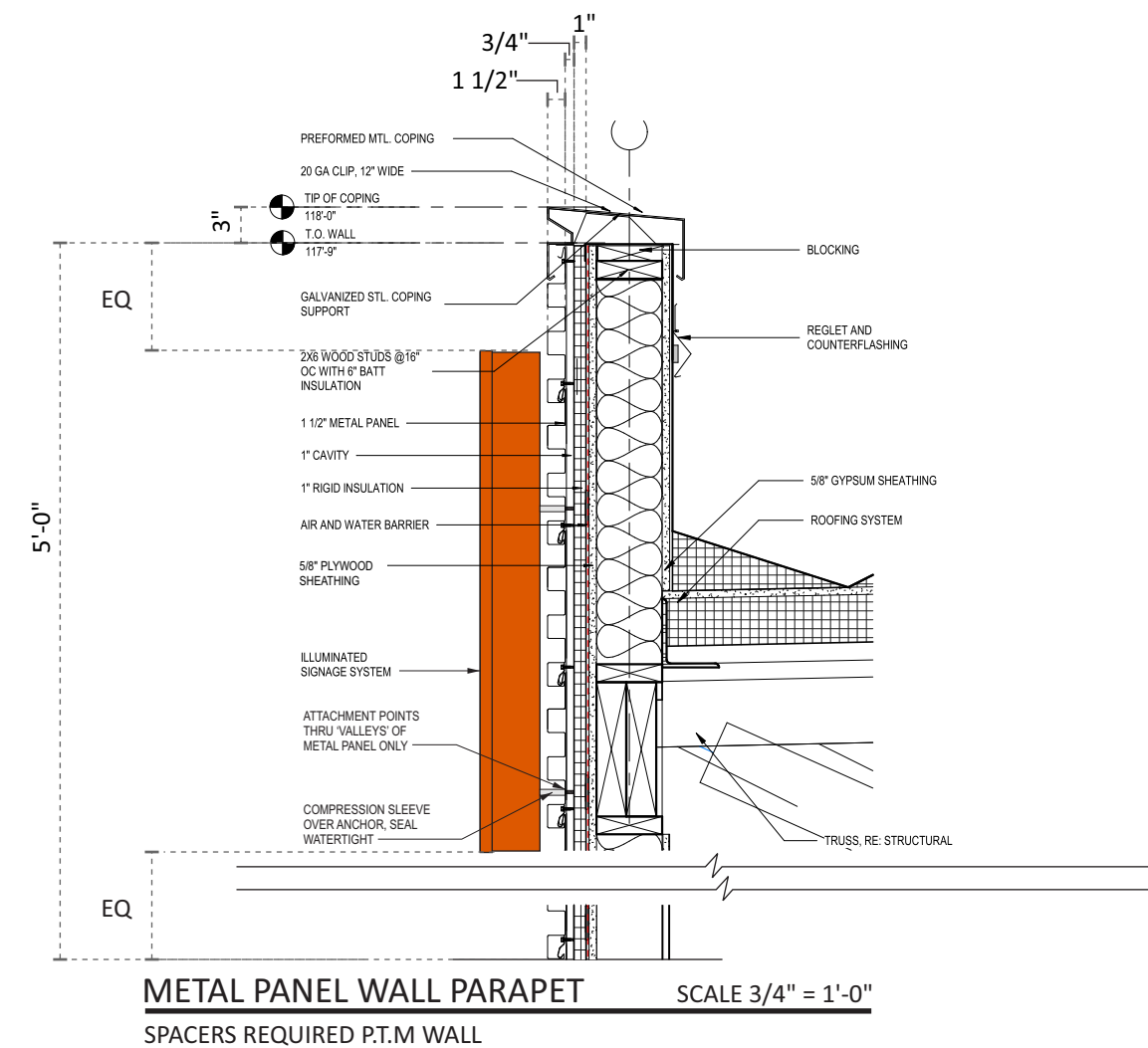
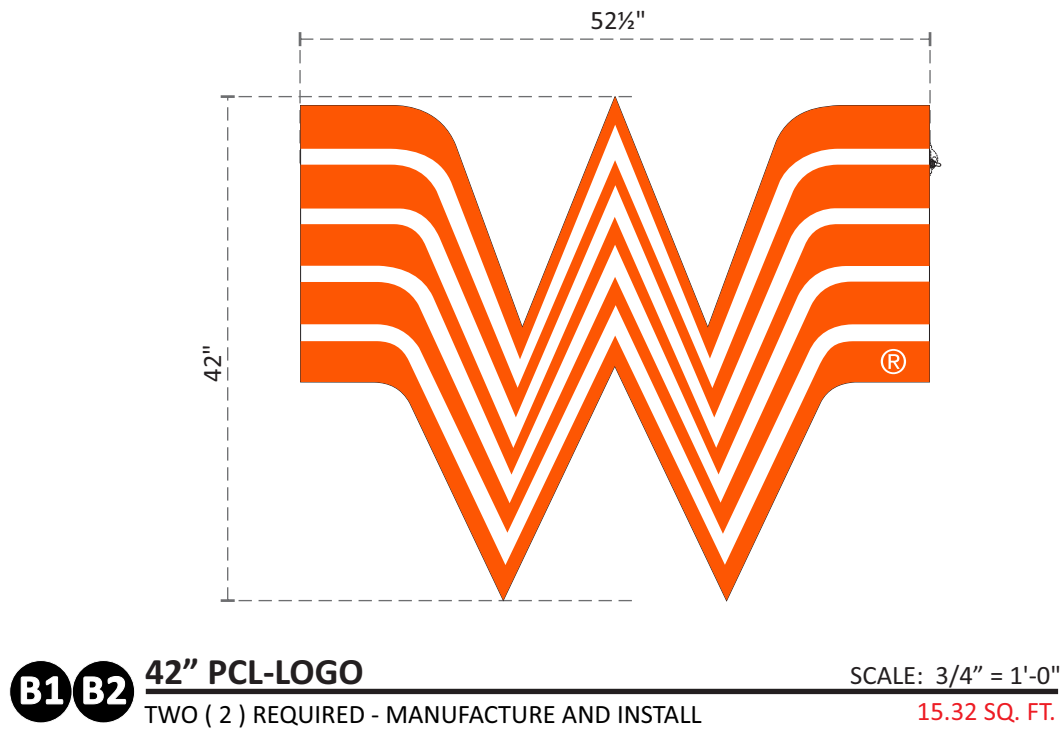


chandler signs.com	
National Headquarters	14201 Sovereign Road #101 Fort Worth, TX 76155 (214) 902-2000 Fax (214) 902-2044
San Antonio	17319 San Pedro Ave Ste 200 San Antonio, TX 78232 (210) 349-3804 Fax (210) 349-8724
West Coast	3220 Executive Ridge Dr Ste 250 Vista, CA 92081 (760) 734-1708 Fax (760) 734-3752
Northeast US	2301 River Road Suite 201 Louisville, KY 40206 (502) 897-9800 Cell (502) 554-2575
Florida	2584 Sand Hill Point Circle Davenport, FL 33837 (863) 426-1100 Fax (863) 424-1160
Georgia	111 Woodstone Place Dawsonville, GA 30534 (678) 725-8852 Fax (210) 349-8724
South Texas	PO BOX 125 206 Doral Drive Portland, TX 78374 (961) 563-5599 Fax (361) 643-6533

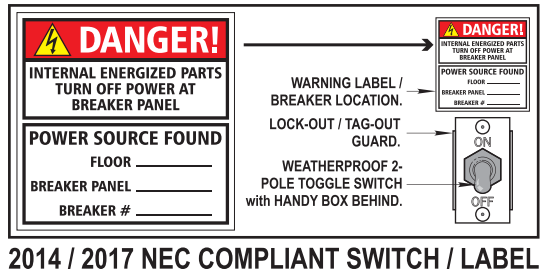
This drawing is the property of
Chandler Signs, LLC
All rights to its use for reproduction
are reserved by Chandler Signs, LLC


**FINAL ELECTRICAL
CONNECTION BY
CUSTOMER**

THIS SIGN IS INTENDED TO BE INSTALLED
IN ACCORDANCE WITH ARTICLE 600 OF THE
NATIONAL ELECTRICAL CODE AND/OR OTHER
APPLICABLE LOCAL CODES. THIS INCLUDES
PROPER GROUNDING & BONDING OF THE SIGN.
SIGN WILL BEAR UL LABEL(S).



LETTER SECTION N.T.S.
SELF-CONTAINED
5/8" PLYWOOD BLOCKING AND PRIMARY ELECTRICAL BY G.C.
(NOT INCLUDED BY CHANDLER SIGNS)





Design #
0626447AR3

Sheet 4 of 10

Client
#

Address
SWC Douglas St - St Lukes Blvd,
Lee 's Summit, MO

Acct. Rep. DEBBIE MOLTZ
Coordinator LAUREN STACKHOUSE

Designer IH

Date 8/6/20

Approval / Date


Client	
Sales	
Estimating	
Art	
Engineering	
Landlord	

Revision/Date

R1(8-7-20)IH: Delete raceways from channel letters. (not allowed by City)

R2(1-11-21)IH: Change orange LEDs to white. Update package.

R3(1-13-21)IH: Update site plan & elevations per latest set of plans. Ensure plan for placement of menuboards is shown accurately




chandlersigns.com

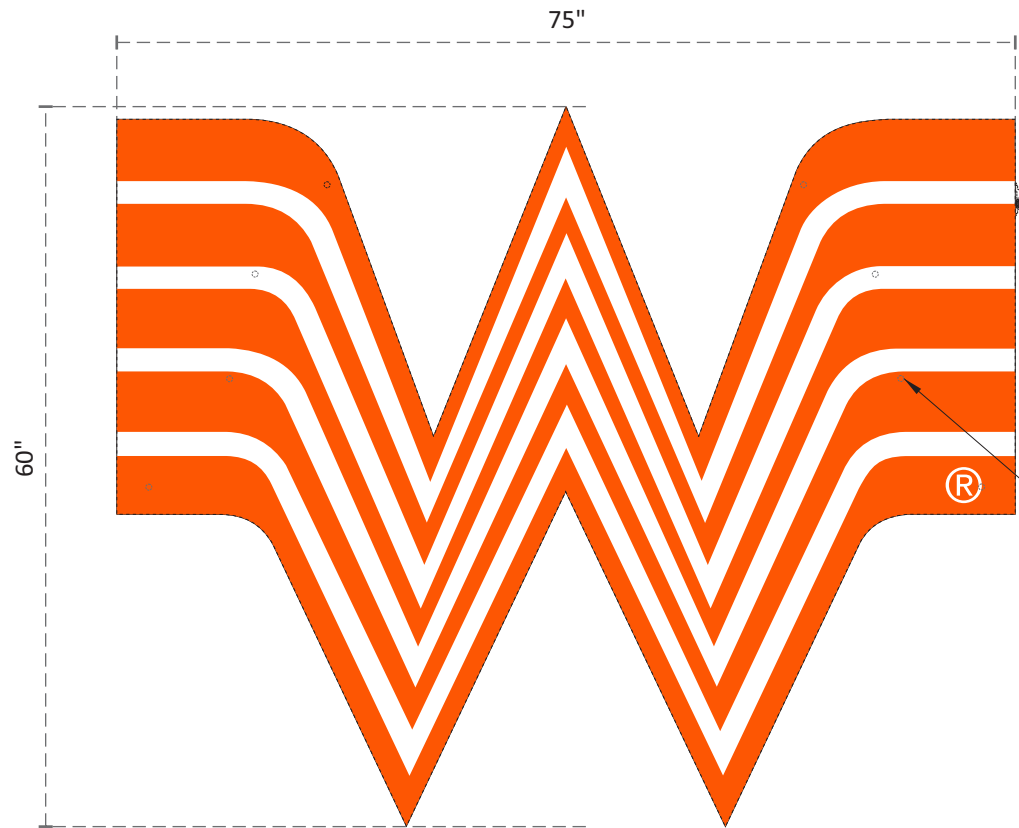
National Headquarters	14201 Sovereign Road #101 Fort Worth, TX 76155 (214) 902-2000 Fax (214) 902-2044
San Antonio	17319 San Pedro Ave Ste 200 San Antonio, TX 78232 (210) 349-3804 Fax (210) 349-8724
West Coast	3220 Executive Ridge Dr Ste 250 Vista, CA 92081 (760) 734-1708 Fax (760) 734-3752
Northeast US	2301 River Road Suite 201 Louisville, KY 40206 (502) 897-9800 Cell (502) 554-2575
Florida	2584 Sand Hill Point Circle Davenport, FL 33837 (863) 426-1100 Fax (863) 424-1160
Georgia	111 Woodstone Place Dawsonville, GA 30534 (678) 725-8852 Fax (210) 349-8724
South Texas	PO BOX 125 206 Doral Drive Portland, TX 78374 (961) 563-5599 Fax (361) 643-6533

This drawing is the property of
Chandler Signs, LLC
All rights to its use for reproduction
are reserved by Chandler Signs, LLC

FINAL ELECTRICAL CONNECTION BY CUSTOMER

THIS SIGN IS INTENDED TO BE INSTALLED IN ACCORDANCE WITH ARTICLE 600 OF THE NATIONAL ELECTRICAL CODE AND/OR OTHER APPLICABLE LOCAL CODES. THIS INCLUDES PROPER GROUNDING & BONDING OF THE SIGN. SIGN WILL BEAR UL LABEL(S).



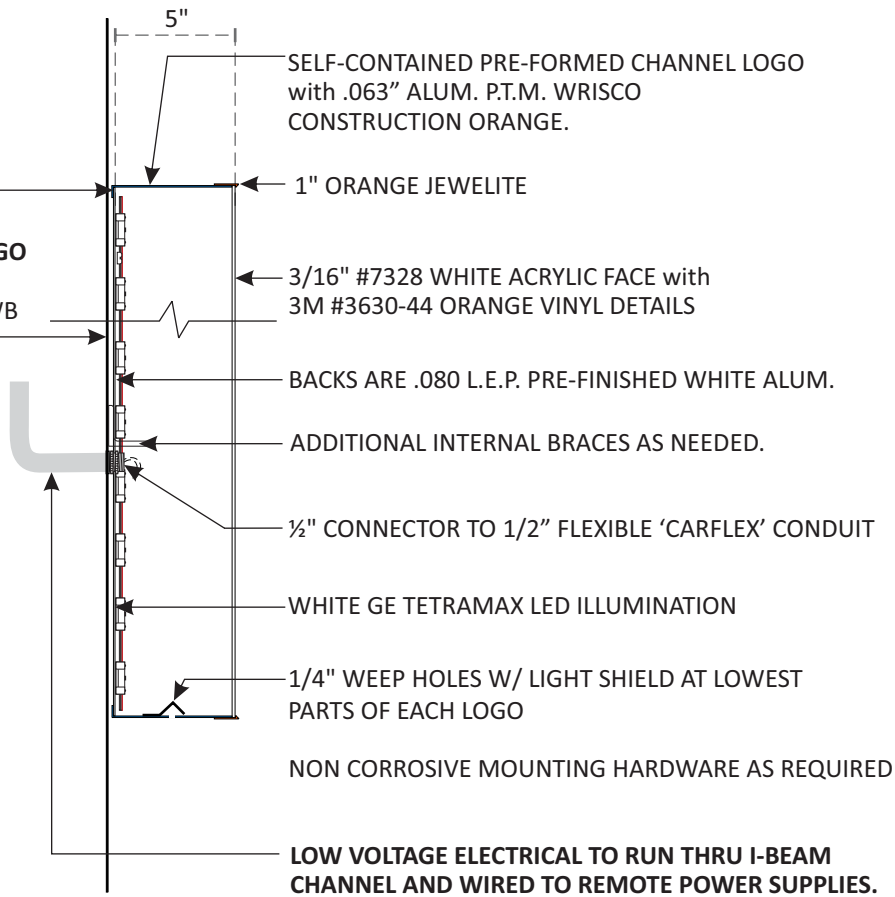


C 60" PCL-LOGO
ONE (1) REQUIRED - MANUFACTURE AND INSTALL
SCALE: 3/4" = 1'-0"
31.25 SQ. FT.

NO STAPLED BACKS. VISIBLE BY WB PATRONS EXITING THE STORE.

PAINT BACK OF CHANNEL LETTER/LOGO TO MATCH WRISCO CONSTRUCTION ORANGE. BACK OF LOGO VISIBLE BY WB PATRONS EXITING THE STORE.

(8) MOUNTING HOLES. PAINT BOLTS TO MATCH ORANGE. MIN. QTY SHOWN, INSTALLER CAN ADD MORE.



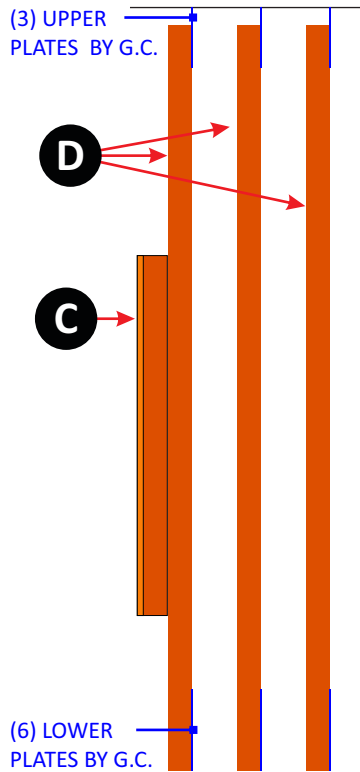
LETTER SECTION
REMOTE POWER SUPPLY
N.T.S.

PRIMARY ELECTRICAL BY G.C. (NOT INCLUDED BY CHANDLER SIGNS)

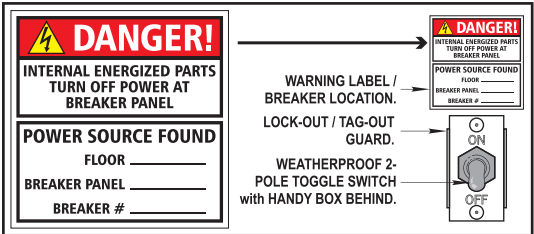
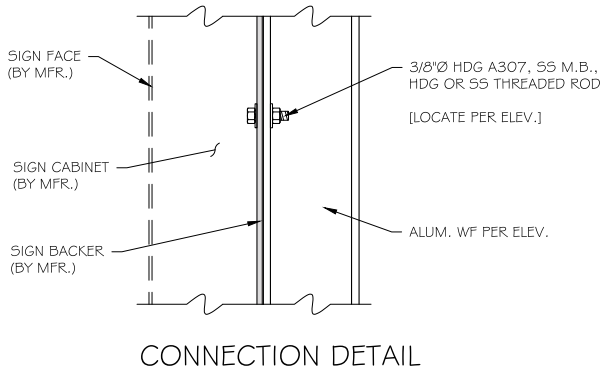
NOTE: REMOTE POWER SUPPLY. LOW VOLTAGE LEAD GOING BACK TO DESIGNATED AREA BEHIND THE WALL WITHIN 40FT OF THE SIGN OR ABOVE THE ROOF LINE. THE DESIGNATED AREA TO BE ACCESSIBLE FOR FUTURE SERVICE AND TO BE IDENTIFIED BY THE ARCHITECT. PRIMARY ELECTRICAL BY THE GC SHOULD BE LOCATED IN THIS AREA. GEN. CONTRACTOR TO PROVIDE THREE (3) PROVIDE CONDUITS FROM DESIGNATED AREA TO AREA BEHIND UPPER ATTACHMENT PLATES.

NOTE: SHIP TOUCH-UP PAINT COLOR TO MATCH BACKGROUND WALL WITH SIGN. ALL BOLTS ON RACEWAY TO BE PAINTED TO MATCH AFTER SIGN IS INSTALLED.

NOTE: LOCATION OF PRIMARY ELECTRICAL WITHIN THE BUILDING (AND LOCATION OF REMOTE POWERS SUPPLIES) TO BE IDENTIFIED BY THE ARCHITECT.



C END VIEW
LOGO INSTALLED ABOVE ENTRY DOOR
SCALE 3/8" = 1'-0"



2014 / 2017 NEC COMPLIANT SWITCH / LABEL



Design #	
0626447AR3	
Sheet	5 of 10
Client	
#	
Address	
SWC Douglas St - St Lukes Blvd, Lee 's Summit, MO	
Acct. Rep.	DEBBIE MOLTZ
Coordinator	LAUREN STACKHOUSE
Designer	IH
Date	8/6/20
Approval / Date	
Client	
Sales	
Estimating	
Art	
Engineering	
Landlord	
Revision/Date	
R1(8-7-20)IH: Delete raceways from channel letters. (not allowed by City)	
R2(1-11-21)IH: Change orange LEDs to white. Update package.	
R3(1-13-21)IH: Update site plan & elevations per latest set of plans. Ensure plan for placement of menuboards is shown accurately	



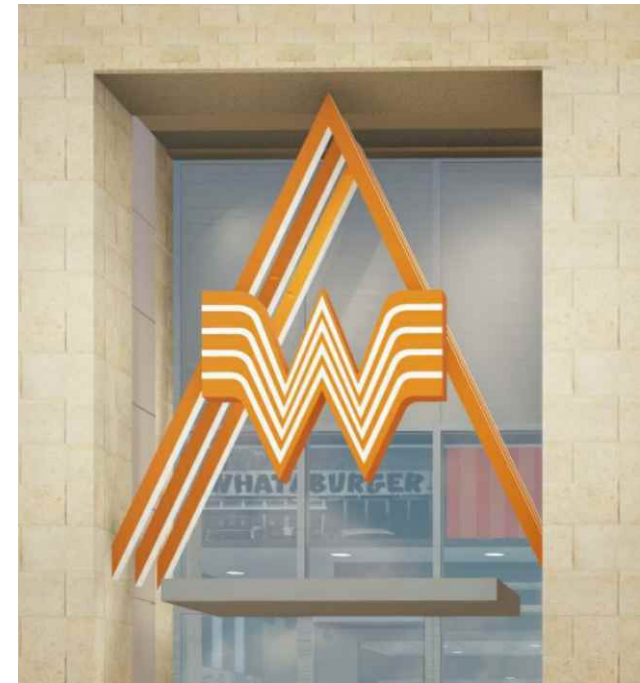
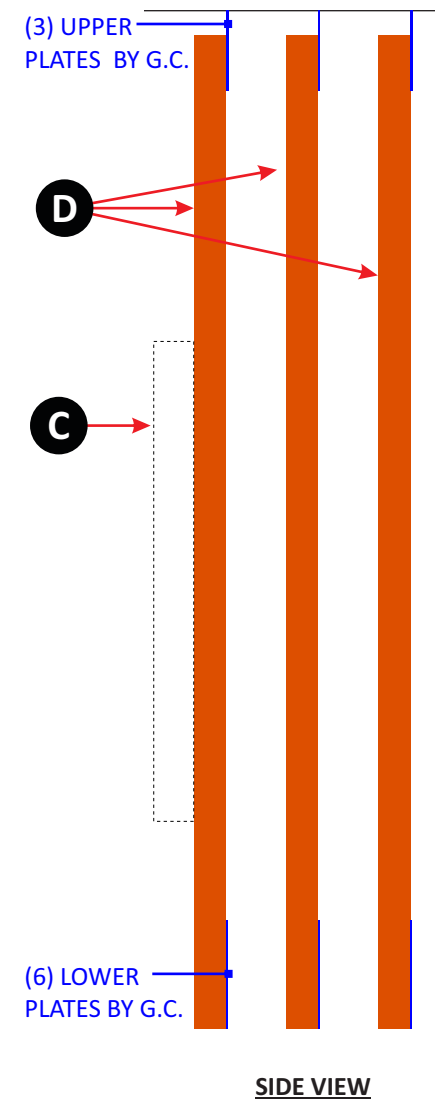
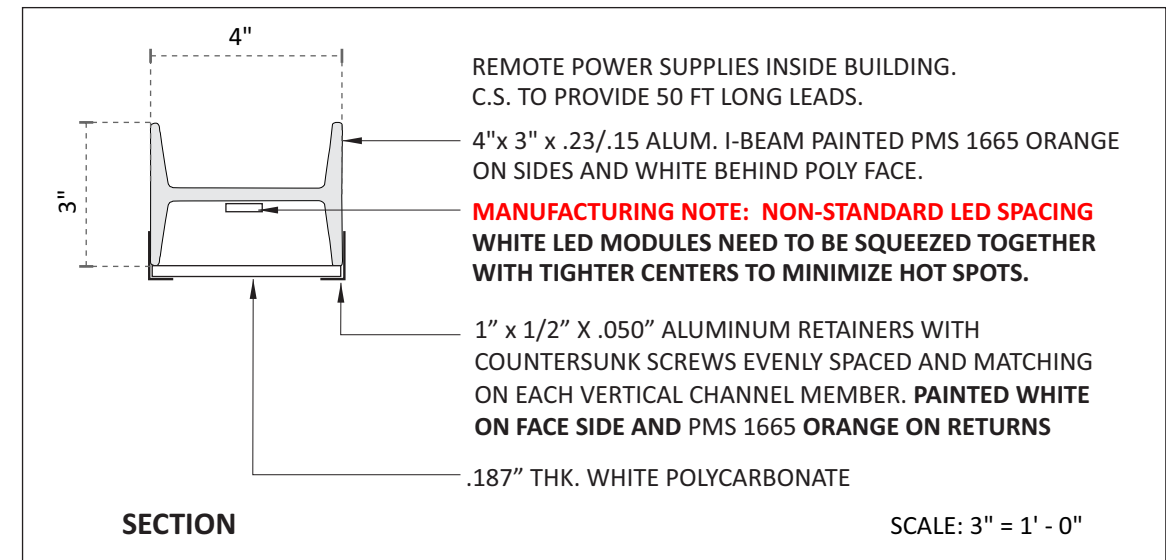
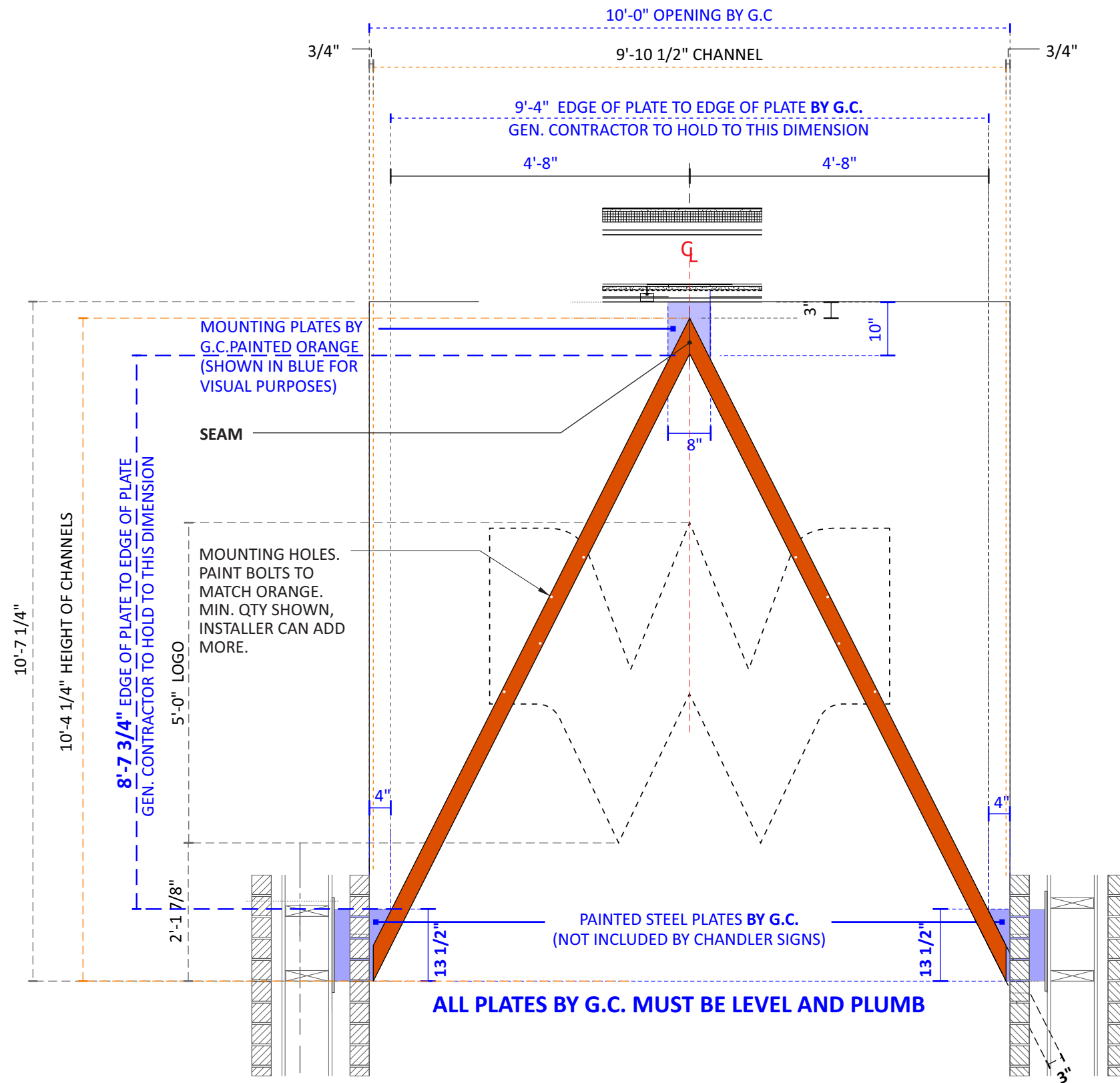
chandlersigns.com	
National Headquarters	14201 Sovereign Road #101 Fort Worth, TX 76155 (214) 902-2000 Fax (214) 902-2044
San Antonio	17319 San Pedro Ave Ste 200 San Antonio, TX 78232 (210) 349-3804 Fax (210) 349-8724
West Coast	3220 Executive Ridge Dr Ste 250 Vista, CA 92081 (760) 734-1708 Fax (760) 734-3752
Northeast US	2301 River Road Suite 201 Louisville, KY 40206 (502) 897-9800 Cell (502) 554-2575
Florida	2584 Sand Hill Point Circle Davenport, FL 33837 (863) 426-1100 Fax (863) 424-1160
Georgia	111 Woodstone Place Dawsonville, GA 30534 (678) 725-8852 Fax (210) 349-8724
South Texas	PO BOX 125 206 Doral Drive Portland, TX 78374 (961) 563-5999 Fax (361) 643-6533

This drawing is the property of
Chandler Signs, LLC
All rights to its use for reproduction
are reserved by Chandler Signs, LLC

**FINAL ELECTRICAL
CONNECTION BY
CUSTOMER**

THIS SIGN IS INTENDED TO BE INSTALLED
IN ACCORDANCE WITH ARTICLE 600 OF THE
NATIONAL ELECTRICAL CODE AND/OR OTHER
APPLICABLE LOCAL CODES. THIS INCLUDES
PROPER GROUNDING & BONDING OF THE SIGN.
SIGN WILL BEAR UL LABEL(S).

D LIT CHANNELS MAIN ENTRY ELEVATION SCALE: 1/2" = 1' - 0"
THREE (3) REQUIRED - MANUFACTURE & INSTALL **XX.0 SQ. FT.**



Design #

0626447AR3

Sheet 6 of 10

Client

Address

SWC Douglas St - St Lukes Blvd,
Lee's Summit, MO

Acct. Rep. DEBBIE MOLTZ
Coordinator LAUREN STACKHOUSE

Designer IH

Date 8/6/20

Approval / Date

Client	
--------	--

Sales	
-------	--

Estimating	
------------	--

Art	
-----	--

Engineering	
-------------	--

Revision/Date

R1(8-7-20)IH: Delete raceways from channel letters.
(not allowed by City)

R2(1-11-21)IH:Change orange LEDs to white. Update package.

R3(1-13-21)IH: Update site plan & elevations per latest set of plans. Ensure plan for placement of menuboards is shown accurately



chandlersigns.com

National Headquarters 14201 Sovereign Road #101
Fort Worth, TX 76155
(214) 902-2000 Fax (214) 902-2044

San Antonio 17319 San Pedro Ave
Ste 200
San Antonio, TX 78232
(210) 349-3804 Fax (210) 349-8724
3220 Executive Ridge Dr

West Coast Ste 250
Vista, CA 92081
(760) 734-1708 Fax (760) 734-3752
2201 River Road

Northeast US
2501 River Road
Suite 201
Louisville, KY 40206
(502) 897-9800 Cell (502) 554-2575

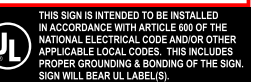
Florida 2584 Sand Hill Point Circle
Davenport, FL 33837
(863) 420-1100 Fax (863) 424-1160

Georgia 111 Woodstone Place
Dawsonville, GA 30534
(678) 725-8852 Fax (210) 349-8724

South Texas PO BOX 125 206 Doral Drive
Portland, TX 78374
(361) 563-5599 Fax (361) 643-6533

This drawing is the property of
Chandler Signs, LLC
All rights to its use for reproduction
are reserved by Chandler Signs, LLC

**FINAL ELECTRICAL
CONNECTION BY
CUSTOMER**





Design #

0626447AR3

Sheet 7 of 10

Client

#

Address

SWC Douglas St - St Lukes Blvd,
Lee's Summit, MO

Acct. Rep. DEBBIE MOLTZ
Coordinator LAUREN STACKHOUSE

Designer IH

Date 8/6/20

Approval / Date

Client

Sales

Estimating

Art

Engineering

Landlord

Revision/Date

R1(8-7-20)IH: Delete raceways from channel letters.
(not allowed by City)

R2(1-11-21)IH: Change orange LEDs to white. Update
package.

R3(1-13-21)IH: Update site plan & elevations per latest
set of plans. Ensure plan for placement of menuboards
is shown accurately



chandlersigns.com

National Headquarters 14201 Sovereign Road #101
Fort Worth, TX 76155
(214) 902-2000 Fax (214) 902-2044

San Antonio 17319 San Pedro Ave
Ste 200
San Antonio, TX 78232
(210) 349-3804 Fax (210) 349-8724

West Coast 3220 Executive Ridge Dr
Ste 250
Vista, CA 92081
(760) 734-1708 Fax (760) 734-3752

Northeast US 2301 River Road
Suite 201
Louisville, KY 40206
(502) 897-9800 Cell (502) 554-2575

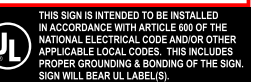
Florida 2584 Sand Hill Point Circle
Davenport, FL 33837
(863) 426-1100 Fax (863) 424-1160

Georgia 111 Woodstone Place
Dawsonville, GA 30534
(678) 725-8852 Fax (210) 349-8724

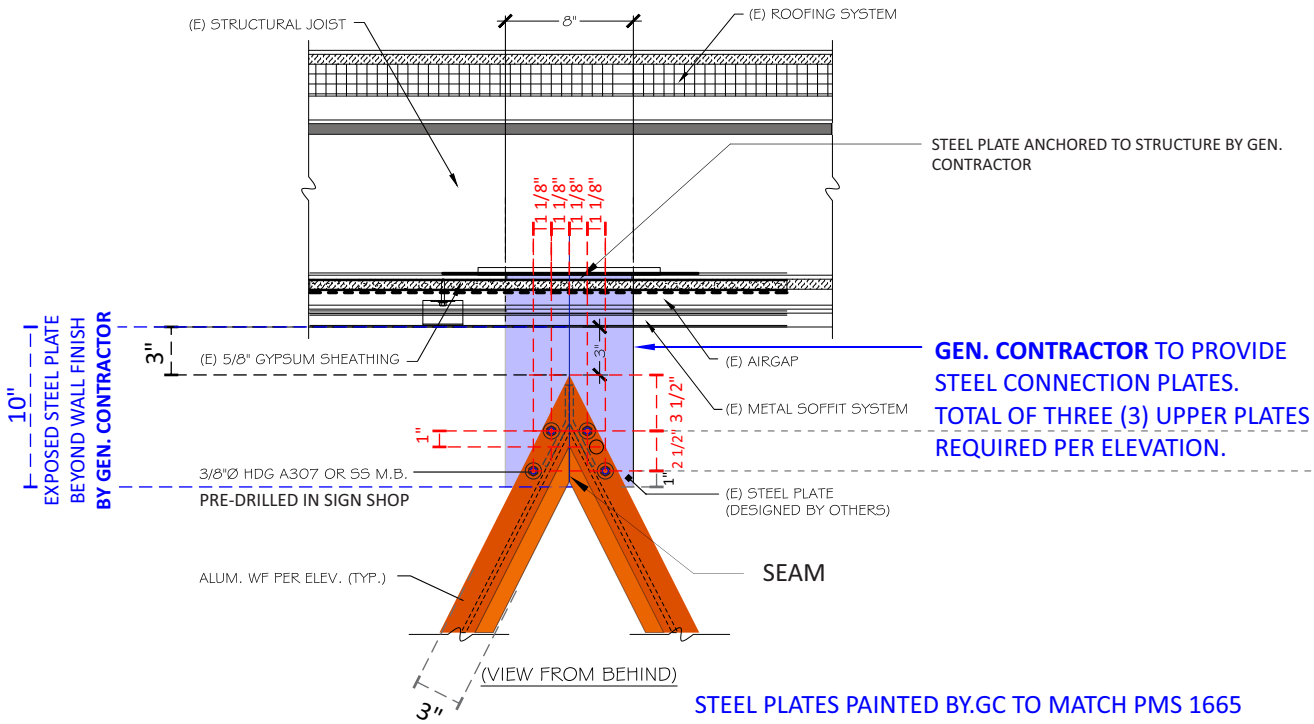
South Texas PO BOX 125 206 Doral Drive
Portland, TX 78374
(961) 563-5599 Fax (361) 643-6533

This drawing is the property of
Chandler Signs, LLC
All rights to its use for reproduction
are reserved by Chandler Signs, LLC

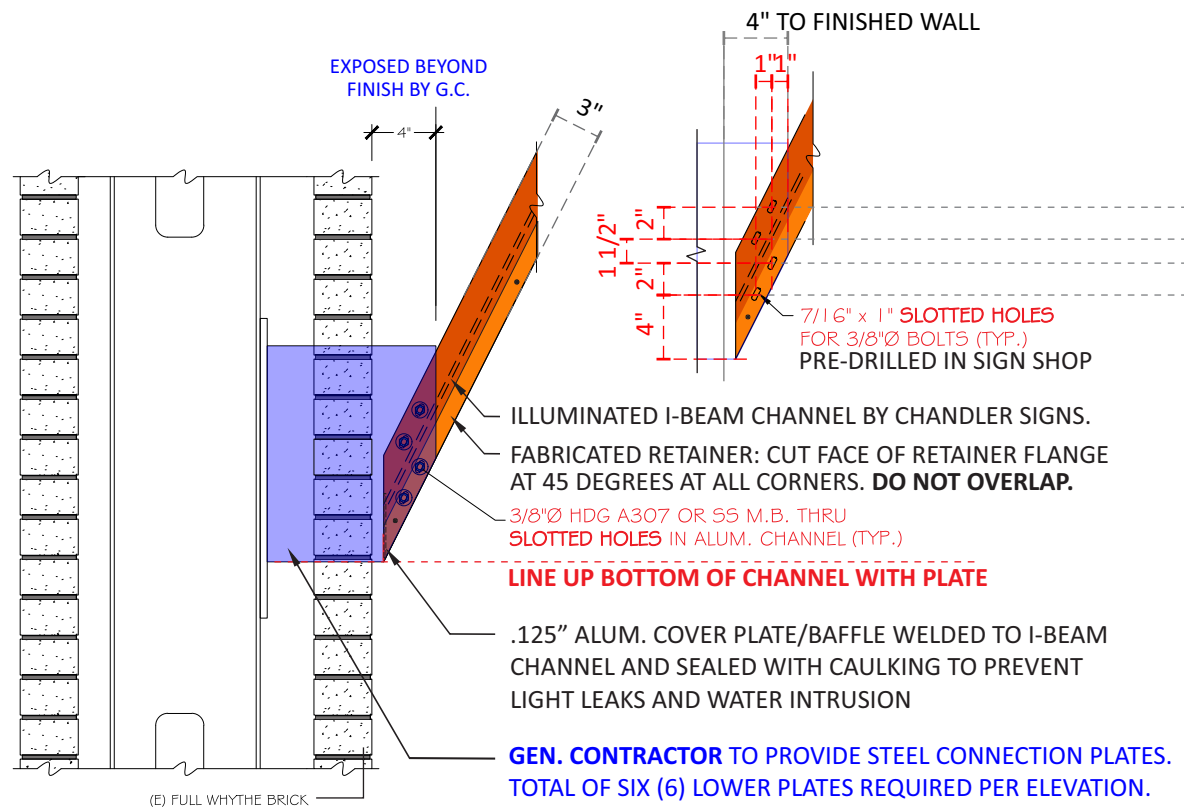
FINAL ELECTRICAL
CONNECTION BY
CUSTOMER



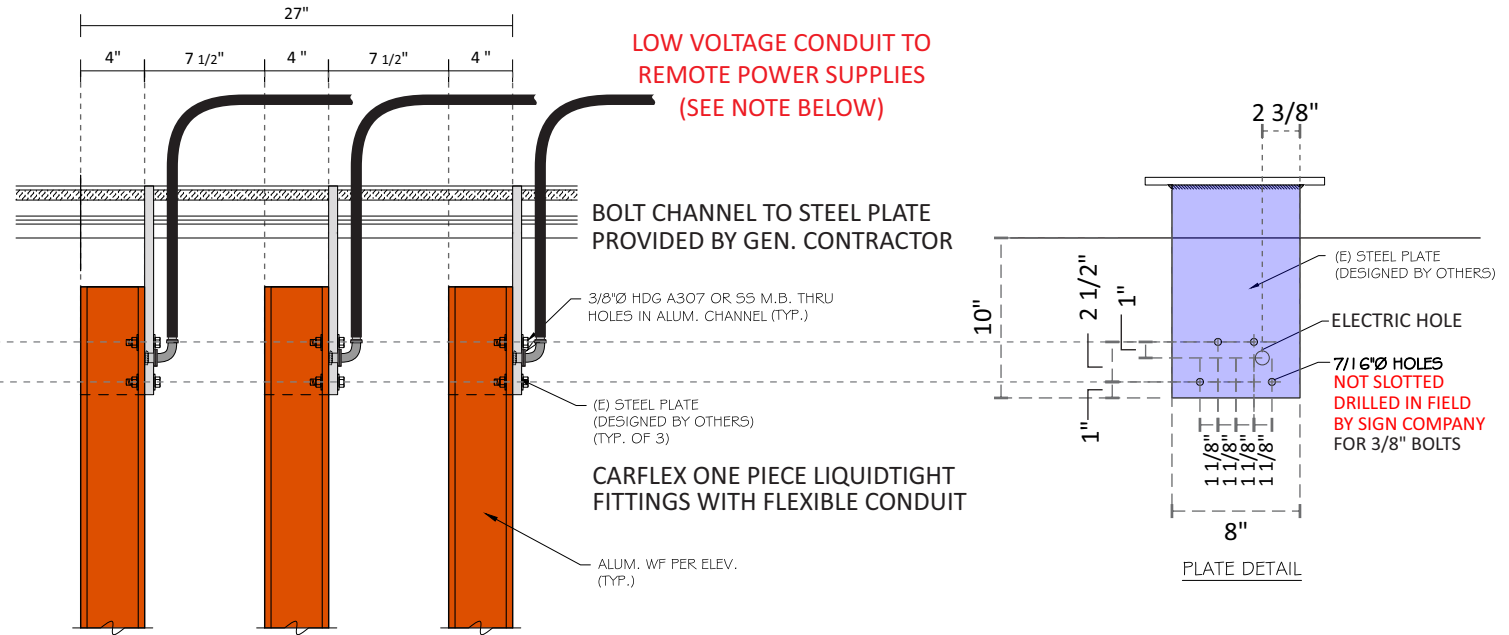
PROPER INSTALL OF CHANNELS IS SUBJECT TO ALL PLATES BY G.C. TO BE SPACED, LEVEL AND PLUMB AS SHOWN ON STRUCTURAL DRAWINGS.



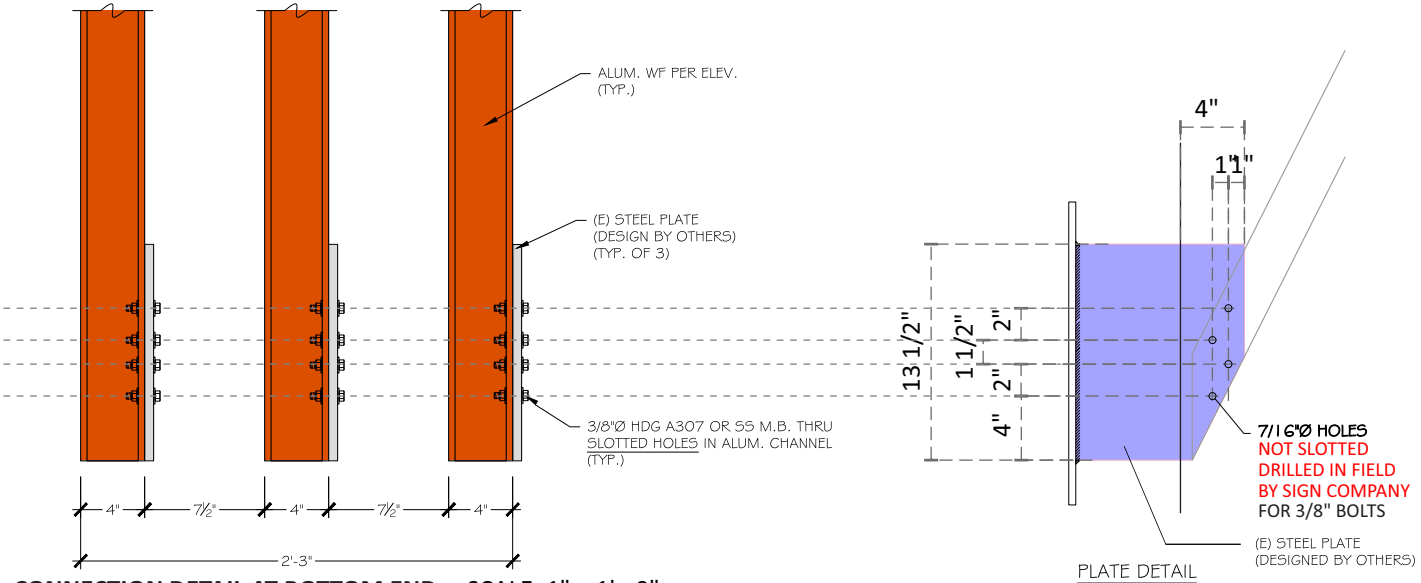
SCALE: 1" = 1' - 0"
WALL SECTION DETAIL AT ENTRY - TOP



SCALE: 1" = 1' - 0"
WALL SECTION DETAIL AT ENTRY - BOTTOM



CONNECTION DETAIL AT TOP END



CONNECTION DETAIL AT BOTTOM END SCALE: 1" = 1' - 0"

PRE-WIRING NOTE:

GEN. CONTRACTOR TO PROVIDE THREE (3) CARFLEX CONDUIT WHIPS FOR LOW VOLTAGE WIRING TO DESIGNATED AREA BEHIND THE WALL AND WITHIN 40FT OF THE SIGN OR TO AREA ABOVE THE ROOF LINE. ELECTRICAL CONTRACTOR TO PROVIDE PULL STRINGS THRU EACH CONDUIT TO UPPER PLATES. THE DESIGNATED AREA TO BE ACCESSIBLE FOR INSTALL OF POWER SUPPLIES AND FUTURE SERVICE, AND TO BE IDENTIFIED BY THE ARCHITECT. PRIMARY ELECTRICAL BY THE GC SHOULD BE LOCATED IN THIS AREA. CONDUIT WHIPS TO BE ATTACHED BEHIND UPPER ATTACHMENT PLATES.

IMPORTANT NOTE FOR WHATABURGER'S GENERAL CONTRACTOR:

THE 9 STEEL PLATES PROVIDED BY GENERAL CONTRACTOR DESIGNED TO SUPPORT THE LED CHANNELS SUPPLIED AND INSTALLED BY THE SIGN VENDOR MUST BE INSTALLED IN THE EXACT PLACEMENT SHOWN ON THE STRUCTURAL DRAWINGS. THE PLATES MUST BE EQUALLY SPACED, LEVEL, & PLUMB IN ORDER FOR THE FINAL APPEARANCE OF THE INSTALLED LED CHANNELS TO APPEAR PERFECTLY PARALLEL AND SYMMETRICAL AS PER THE DESIGN INTENT. THIS PLATE PLACEMENT WILL BE CRITICAL IN AVOIDING ANY REALIGNMENT CHALLENGES DURING INSTALLATION CAUSING ADDITIONAL LABOR AND/OR TRIPS TO THE JOBSITE FOR FINAL FIELD ADJUSTMENTS.



Design #

0626447AR3

Sheet

8 of 10

Client

#

Address

SWC Douglas St - St Lukes Blvd,
Lee 's Summit, MO

Acct. Rep.

DEBBIE MOLTZ

Coordinator

LAUREN STACKHOUSE

Designer

IH

Date

8/6/20

Approval / Date	
Client	
Sales	
Estimating	
Art	
Engineering	
Landlord	

Revision/Date

R1(8-7-20)IH: Delete raceways from channel letters.
(not allowed by City)

R2(1-11-21)IH: Change orange LEDs to white. Update package.

R3(1-13-21)IH: Update site plan & elevations per latest set of plans. Ensure plan for placement of menuboards is shown accurately

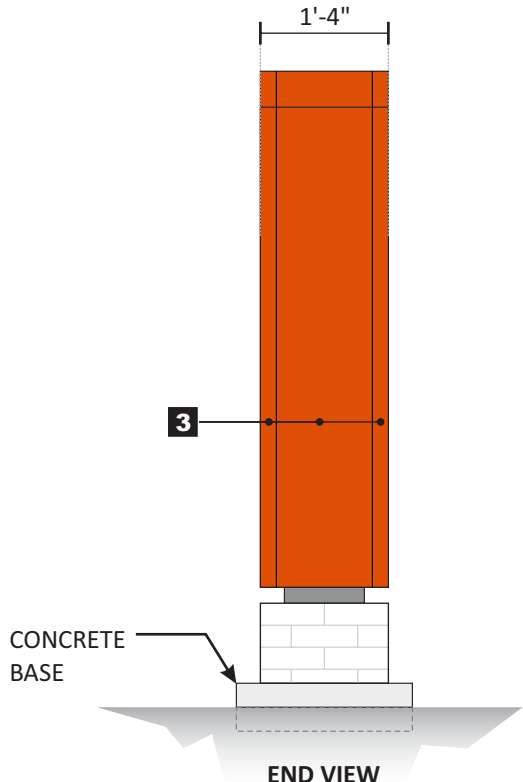
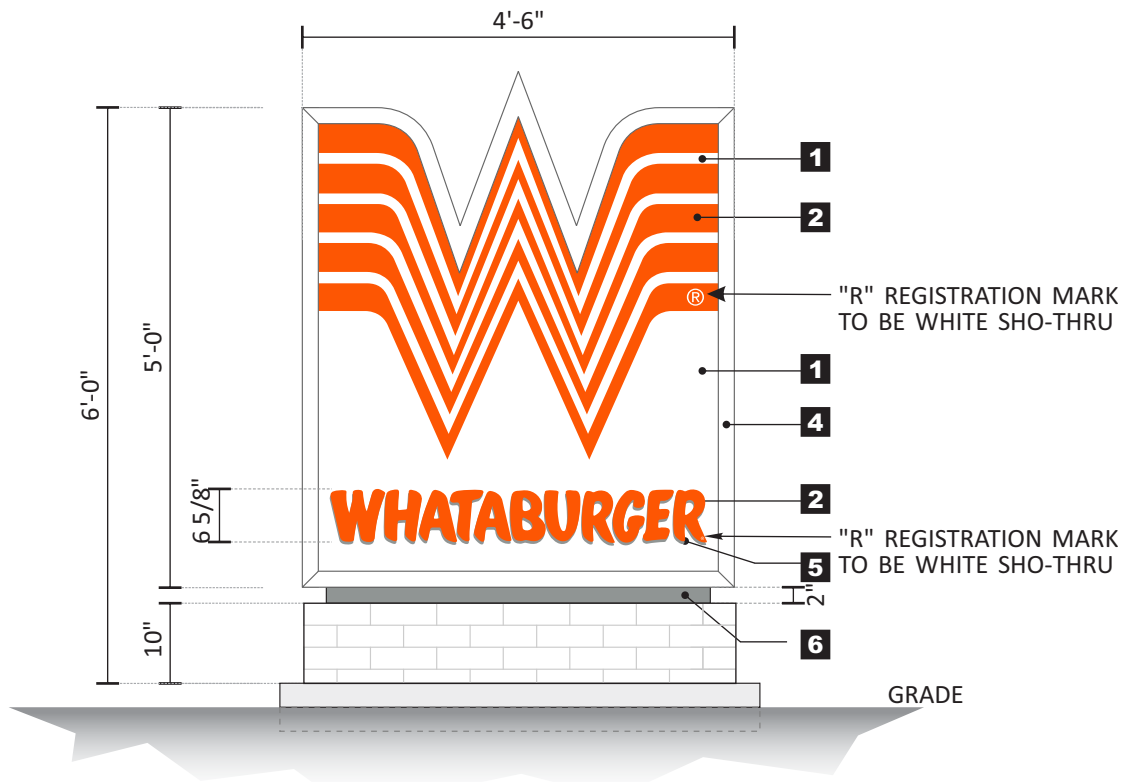


chandlersigns.com	
National Headquarters	14201 Sovereign Road #101 Fort Worth, TX 76155 (214) 902-2000 Fax (214) 902-2044
San Antonio	17319 San Pedro Ave Ste 200 San Antonio, TX 78232 (210) 349-3804 Fax (210) 349-8724
West Coast	3220 Executive Ridge Dr Ste 250 Vista, CA 92081 (760) 734-1708 Fax (760) 734-3752
Northeast US	2301 River Road Suite 201 Louisville, KY 40206 (502) 897-9800 Cell (502) 554-2575
Florida	2584 Sand Hill Point Circle Davenport, FL 33837 (863) 426-1100 Fax (863) 424-1160
Georgia	111 Woodstone Place Dawsonville, GA 30534 (678) 725-8852 Fax (210) 349-8724
South Texas	PO BOX 125 206 Doral Drive Portland, TX 78374 (961) 563-5999 Fax (361) 643-6533

This drawing is the property of
Chandler Signs, LLC
All rights to its use for reproduction
are reserved by Chandler Signs, LLC

FINAL ELECTRICAL
CONNECTION BY
CUSTOMER

THIS SIGN IS INTENDED TO BE INSTALLED
IN ACCORDANCE WITH ARTICLE 600 OF THE
NATIONAL ELECTRICAL CODE AND/OR OTHER
APPLICABLE LOCAL CODES. THIS INCLUDES
PROPER GROUNDING & BONDING OF THE SIGN.
SIGN WILL BEAR UL LABEL(S).



E D/F MONUMENT 5 FT CABINET

SCALE: 1/2"=1'-0"

ONE (1) REQUIRED - MANUFACTURE AND INSTALL 22.50 SQ. FT. CABINET ONLY

D/F ALUM. CABINET - .063" FILLERS WITH 2" RETAINERS.
SG ACRYLIC FACES WITH APPLIED 1ST SURFACE 3M VINYL GRAPHICS.

INTERNALLY ILLUMINATED WITH WHITE L.E.D.
DISPLAY TO HAVE ON/OFF SERVICE SWITCHES
2" ALUM. REVEAL

ONE STEEL SUPPORT WITH CONCRETE PIER

CONCRETE PAD AND MASONRY INCLUDING CMU CORE BY G.C. – NO FRAME REQ'D
STONE VENEER TO MATCH BUILDING STONE.

U.L. LABELS REQUIRED. LABELS TO BE ATTACHED IN VISIBLE
AREA, DIRECTLY BELOW ON/OFF SWITCH
2.5 TOTAL AMPS (1) 120v, 20a CIRCUIT REQ'D

NOTE: STEEL AND FOUNDATION FOR SIGN TO BE DETERMINED BASED ON SITE SPECIFIC BASIS, LOCAL SOIL CONDITIONS AND WIND LOAD REQUIREMENTS.

COLOR SCHEDULE	
1	3/16" WHITE SG ACRYLIC FACES
2	3M 3630-44 ORANGE VINYL
3	P.T.M. P.M.S. 1665C ORANGE.
4	SPRAYLAT MARK 1: SM-102S SATIN WHITE
5	3M 3630-51 SILVER GRAY VINYL
6	P.T.M. P.M.S. 430 GRAY



Design #

0626447AR3

Sheet 9 of 10

Client

#

Address

SWC Douglas St - St Lukes Blvd,
Lee 's Summit, MO

Acct. Rep. DEBBIE MOLTZ
Coordinator LAUREN STACKHOUSE

Designer IH

Date 8/6/20

Approval / Date

Client

Sales

Estimating

Art

Engineering

Landlord

Revision/Date

R1(8-7-20)IH: Delete raceways from channel letters.
(not allowed by City)

R2(1-11-21)IH: Change orange LEDs to white. Update
package.

R3(1-13-21)IH: Update site plan & elevations per latest
set of plans. Ensure plan for placement of menuboards
is shown accurately



chandlersigns.com

National Headquarters 14201 Sovereign Road #101
Fort Worth, TX 76155
(214) 902-2000 Fax (214) 902-2044

San Antonio 17319 San Pedro Ave
Ste 200
San Antonio, TX 78232
(210) 349-3804 Fax (210) 349-8724

West Coast 3220 Executive Ridge Dr
Ste 250
Vista, CA 92081
(760) 734-1708 Fax (760) 734-3752

Northeast US 2301 River Road
Suite 201
Louisville, KY 40206
(502) 897-9800 Cell (502) 554-2575

Florida 2584 Sand Hill Point Circle
Davenport, FL 33837
(863) 426-1100 Fax (863) 424-1160

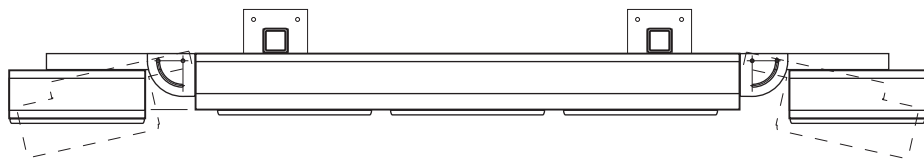
Georgia 111 Woodstone Place
Dawsonville, GA 30534
(678) 725-8852 Fax (210) 349-8724

South Texas PO BOX 125 206 Doral Drive
Portland, TX 78374
(961) 563-5999 Fax (361) 643-6533

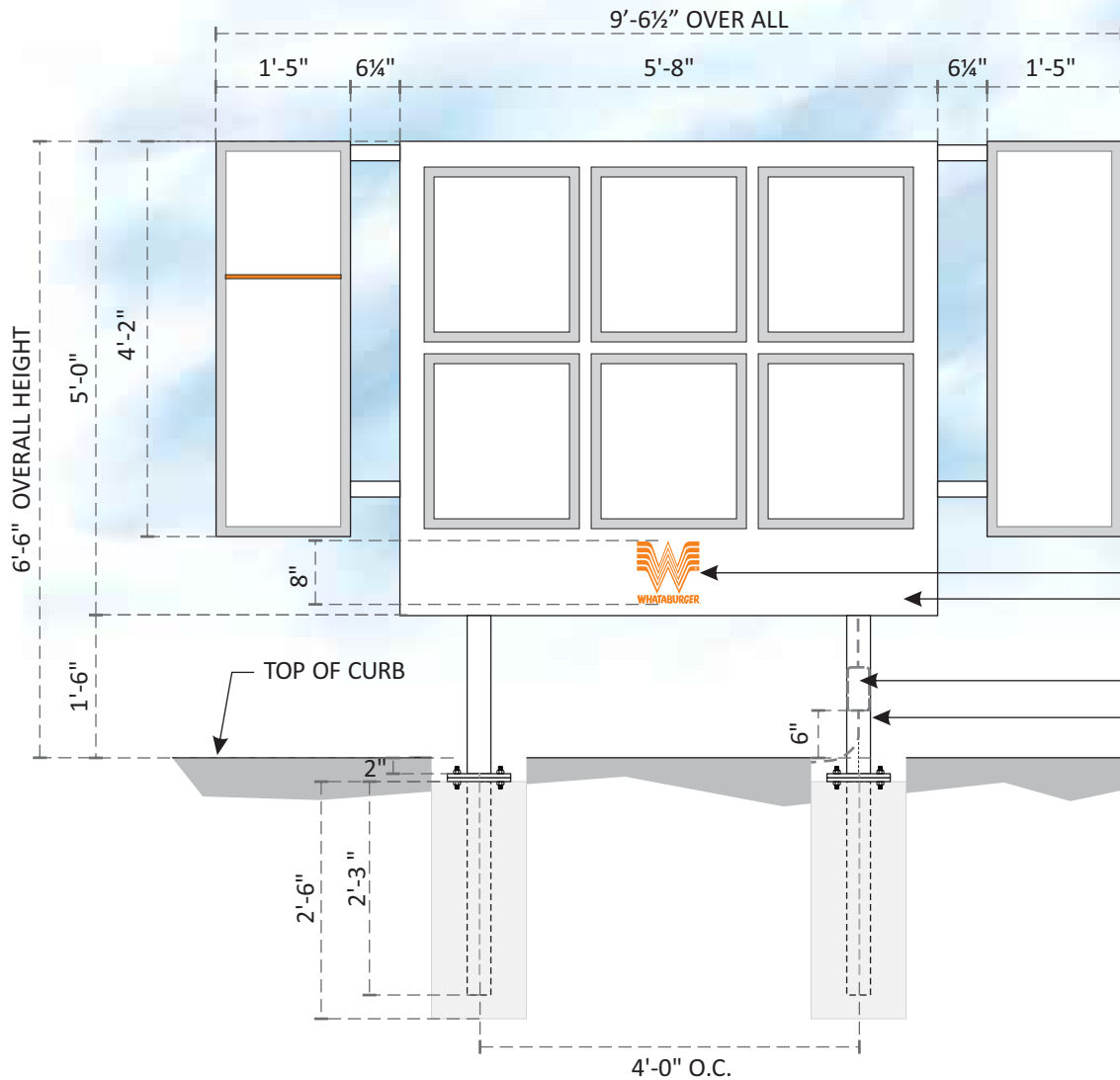
This drawing is the property of
Chandler Signs, LLC
All rights to its use for reproduction
are reserved by Chandler Signs, LLC

FINAL ELECTRICAL
CONNECTION BY
CUSTOMER

THIS SIGN IS INTENDED TO BE INSTALLED
IN ACCORDANCE WITH ARTICLE 600 OF THE
NATIONAL ELECTRICAL CODE AND/OR OTHER
APPLICABLE LOCAL CODES. THIS INCLUDES
PROPER GROUNDING & BONDING OF THE SIGN.
SIGN WILL BEAR UL LABEL(S).



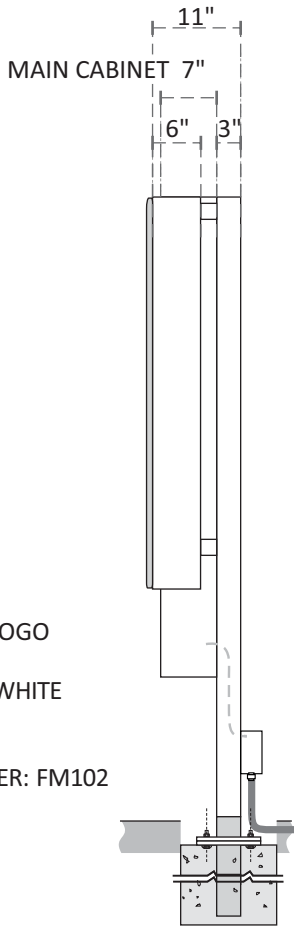
TOP VIEW



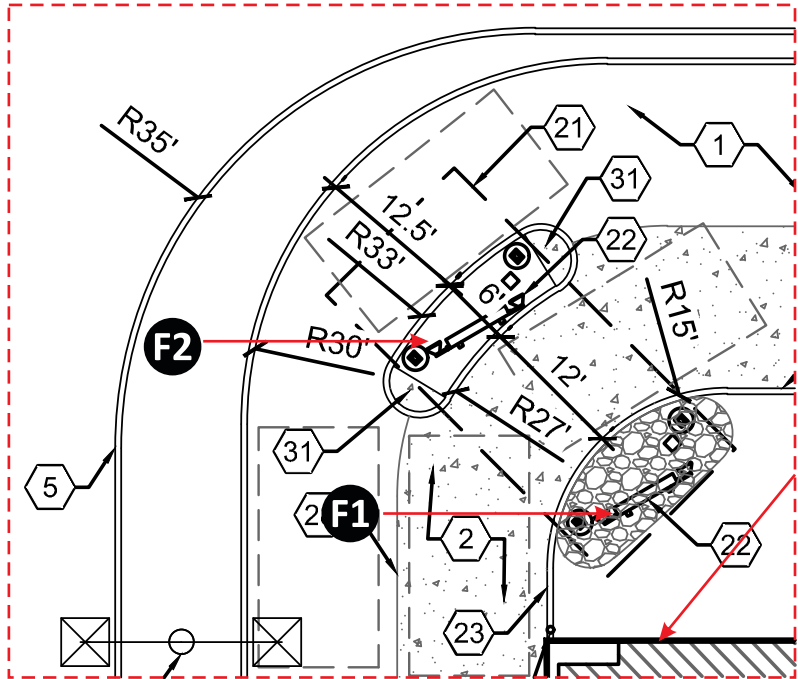
3M #3630-44 ORANGE VINYL COPY & LOGO
ALUMINUM CABINET & FACE,
P.T.M. SPRAYLAT MARK 1: SM-102S SATIN WHITE
• INT. ILLUM. WHITE L.E.D.
J- BOX BY G.C. ON BACK OF SUPPORT
3"x3"x3/16" SUPPORTS P.T.M. FIELD MASTER: FM102
WHITE SATIN

(2) 3"x 3"x 3/16" SQ. STL. TUBE SUPPORTS EACH
IN TWO SECTIONS w/ MATCH PLATE @ GRADE

TWO (2) 12" DIA. x 2'-6" DEEP CONCRETE PIERS



END VIEW



F1 F2 S/F EXTERIOR MENUBOARD
TWO (2) REQUIRED - TAKE FROM STOCK & INSTALL

SCALE: 1/2" = 1' - 0"
46.66 FT.



Design #

0626447AR3

Sheet 10 of 10

Client

#

Address

SWC Douglas St - St Lukes Blvd,
Lee 's Summit, MO

Acct. Rep. DEBBIE MOLTZ
Coordinator LAUREN STACKHOUSE

Designer IH

Date 8/6/20

Approval / Date

Client	
Sales	
Estimating	
Art	
Engineering	
Landlord	

Revision/Date

R1(8-7-20)IH: Delete raceways from channel letters.
(not allowed by City)
R2(1-11-21)IH: Change orange LEDs to white. Update
package.
R3(1-13-21)IH: Update site plan & elevations per latest
set of plans. Ensure plan for placement of menuboards
is shown accurately



chandlersigns.com

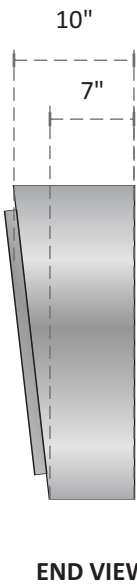
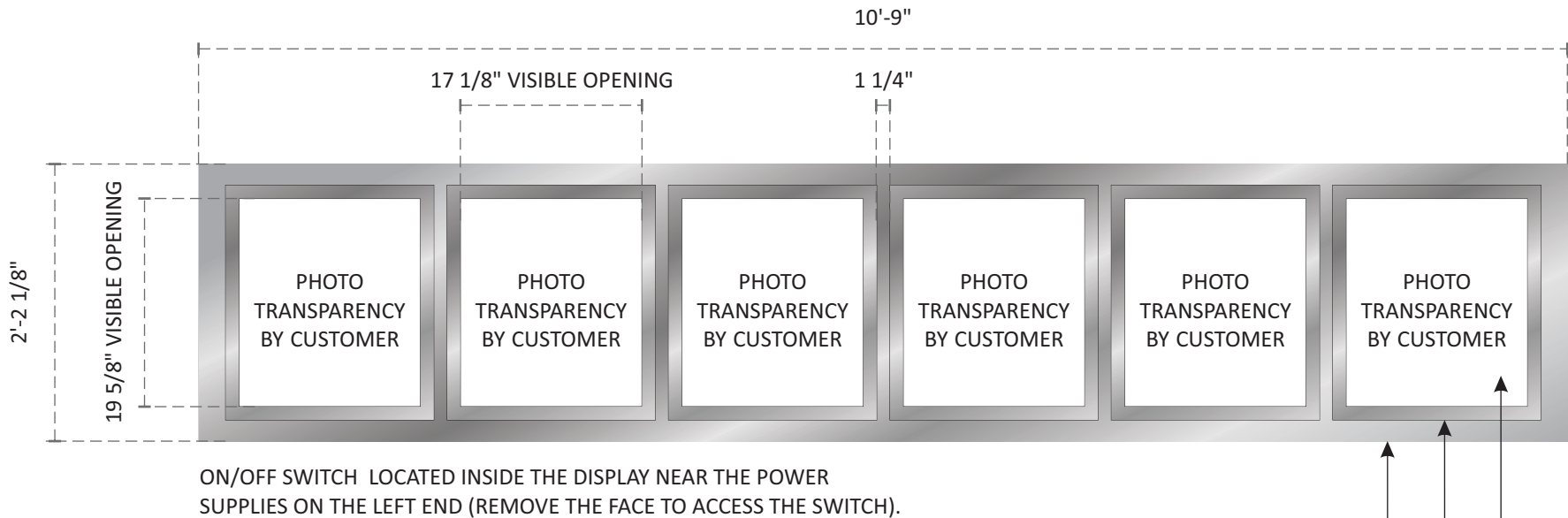
National Headquarters	14201 Sovereign Road #101 Fort Worth, TX 76155 (214) 902-2000 Fax (214) 902-2044
San Antonio	17319 San Pedro Ave Ste 200 San Antonio, TX 78232 (210) 349-3804 Fax (210) 349-8724
West Coast	3220 Executive Ridge Dr Ste 250 Vista, CA 92081 (760) 734-1708 Fax (760) 734-3752
Northeast US	2301 River Road Suite 201 Louisville, KY 40206 (502) 897-9800 Cell (502) 554-2575
Florida	2584 Sand Hill Point Circle Davenport, FL 33837 (863) 426-1100 Fax (863) 424-1160
Georgia	111 Woodstone Place Dawsonville, GA 30534 (678) 725-8852 Fax (210) 349-8724
South Texas	PO BOX 125 206 Doral Drive Portland, TX 78374 (961) 563-5999 Fax (361) 643-6533

This drawing is the property of
Chandler Signs, LLC
All rights to its use for reproduction
are reserved by Chandler Signs, LLC

FINAL ELECTRICAL
CONNECTION BY
CUSTOMER



THIS SIGN IS INTENDED TO BE INSTALLED
IN ACCORDANCE WITH ARTICLE 600 OF THE
NATIONAL ELECTRICAL CODE AND/OR OTHER
APPLICABLE LOCAL CODES. THIS INCLUDES
PROPER GROUNDING & BONDING OF THE SIGN.
SIGN WILL BEAR UL LABEL(S).



D 6 PANEL S/F INTERIOR MENUBOARD SCALE: 3/4" = 1' - 0"
ONE (1) REQUIRED - TAKE FROM STOCK AND DELIVER 24.20 SQ. FT.

FABRICATED 18 GA. BRUSHED (HORIZONTAL GRAIN) STAINLESS STEEL CABINET AND RETURNS, with .080 ALUMINUM BACK PAINTED WHITE.

SIX (6) ROUTED OUT MENU OPENINGS with 1 1/4" POSTER GRIP RETAINER FRAMES ALUM. SATIN FINISH.

.125" 2447 WHITE DIFFUSER ACRYLIC BACK PANEL AND .020" CLEAR LEXAN PROTECTIVE COVER IN POSTER GRIP FRAME. **NOTE:** SERVICE ACCESS THROUGH DIFFUSER FACE - DO NOT RIVET OR SECURE DIFFUSER ACRYLIC WITH FASTENERS.

INTERNALLY ILLUMINATED WITH WHITE L.E.D.

FILE ALL SHARP FINISHED EDGES ON ANY EXTERIOR JOINTS