



Sales: Rhonda Lambert
Project Manager:

910-C NW Blue Parkway
Lee's Summit, MO

Table of Contents

Page 1 - Cover Page
Page 2 - Front Elevation
Page 3 - 30" Direct Mount Channel Letters
Page 4 - 10" x 215" x 42" Black Metal Canopy
Page 5 - 10" x 287" x 42" Black Metal Canopy
Page 6 - Door Vinyl

Revision Notes

Rev 1:



SIGN COMPANY LLC.

731-925-4448 • 800-953-3744 • Fax 731-926-2022
www.designteam.net

A	30" Direct Mount Channel Letters
B	10" x 215" x 42" Black Metal Canopy
C	10" x 287" x 42" Black Metal Canopy
D	Door Vinyl
E	White LED Border

Rev 1
Rev 2
Rev 3
Rev 4
Rev 5
Rev 6

Proposed Elevation



Existing Elevation



Designer: JAC	Date: 1/14/21	Option # 1 - JAC
Client: McAlister's - Lee's Summit, MO		
File Path: Z:\Restaurant\McA/MO/Lee's Summit/910-C NW Blue Parkway/ Remodel January 2021		

- ☐ Proof Is Approved. Proceed With Production Of Order
- ☐ Proof Is Approved With Corrections. Make Corrections
As Indicated And Proceed With Production Of Order

Signature: _____

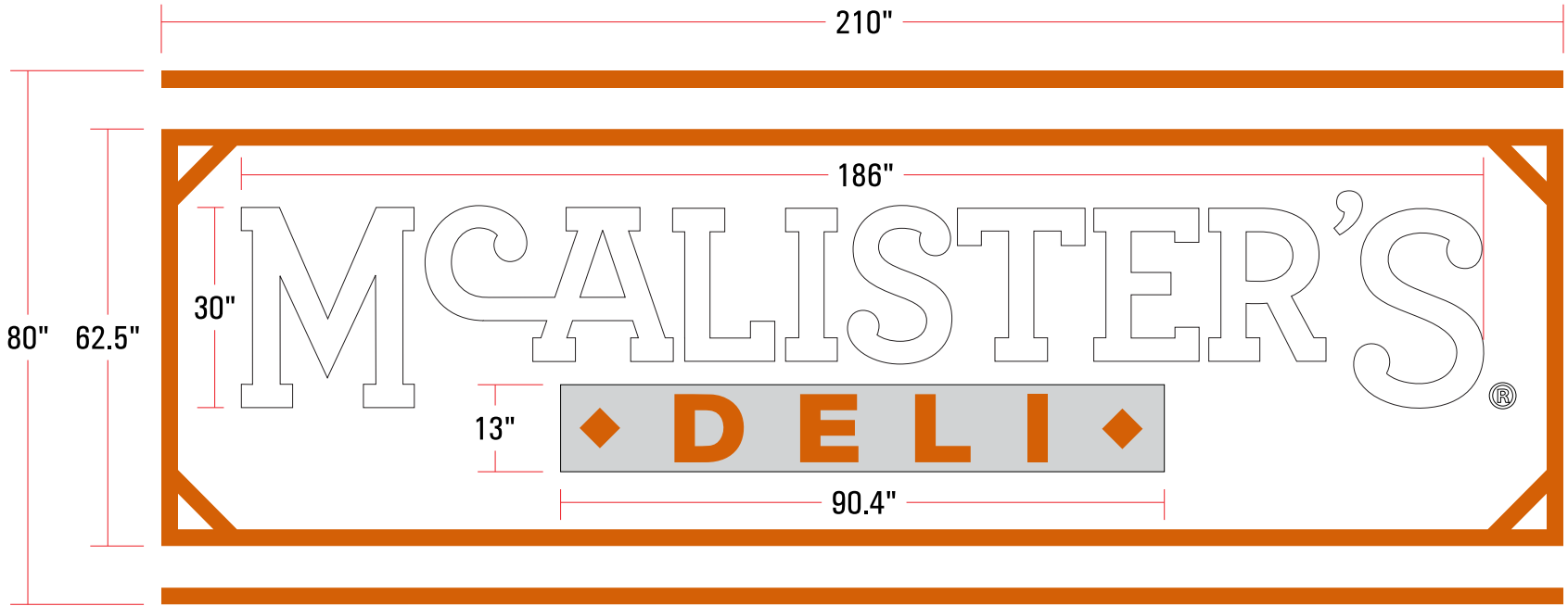
I have reviewed this proof in regard to: Sign type, order quantity; and accuracy of icons, symbols, and text (e.g. spelling capitalization, punctuation).

Print Name: _____

Date: _____

These plans are the exclusive property of Design Team Sign Company and are the result of the original work of its employees. They are submitted to your company for the sole purpose of your consideration of whether to purchase these plans or to purchase from Design Team Sign Company a product manufactured according to these plans. Distribution or exhibition of the plans to anyone other than employees of your company, or use of these plans to construct a product similar to one embodied herein, is expressly forbidden. In the event that exhibition or construction occurs, Design Team Sign Company expects to be reimbursed \$500 in compensation for time and effort entailed in creating these plans.

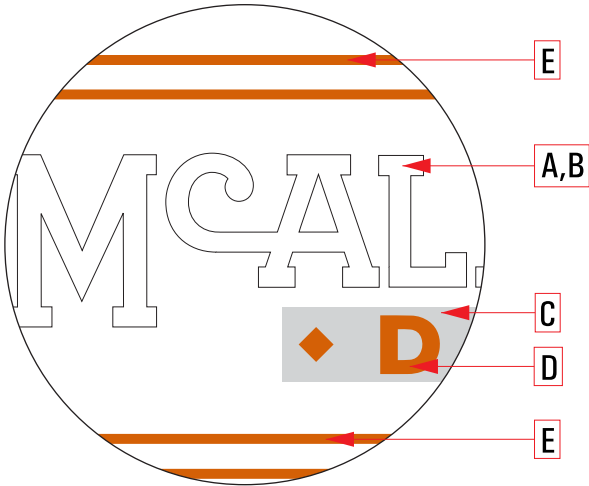
STOCK CODE
MCA-V4-CLDM30-W-B



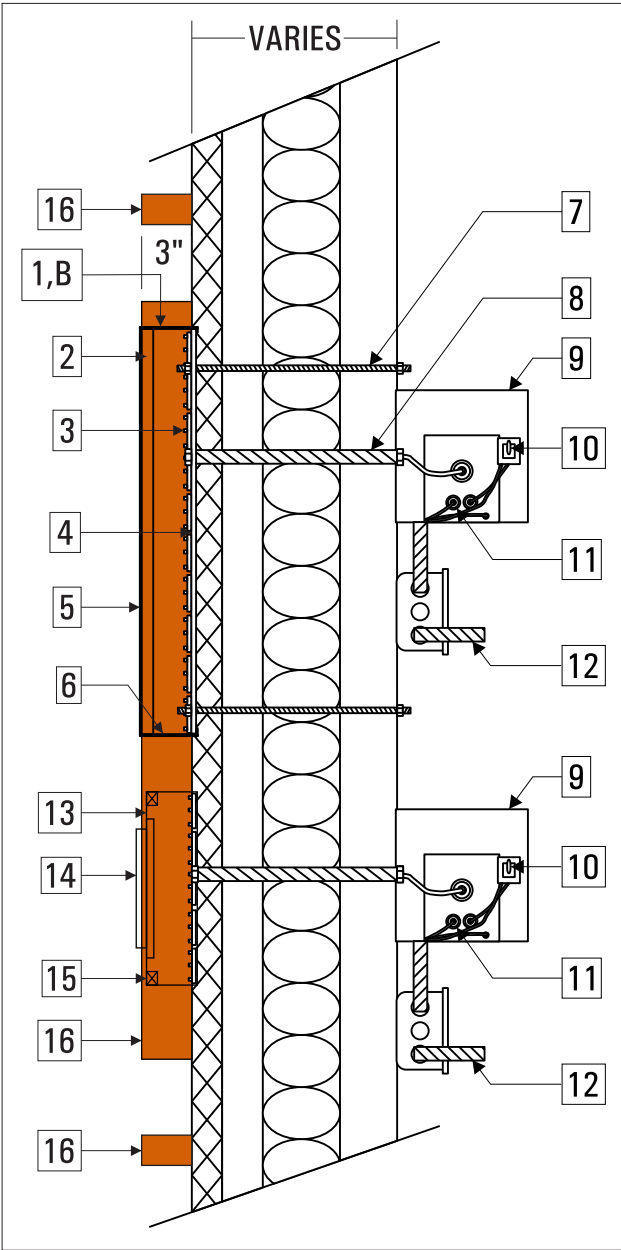
Sign Area: 6'8" x 17'6" = 116.7 sq ft

116.7 SQ FT

Color Schedule



Rev 1: MEB 11-25-19 Revised height dimension of main frame to 62.5"
Rev 2:
Rev 3:
Rev 4:
Rev 5:



Materials	
1	.040 Aluminum Returns
2	1" Trimcap
3	GE 24 Voltmax 7100K White
4	.090 Aluminum Back
5	7328 White Acrylic
6	.25" Weep Holes
7	Mounting Hardware (Varies per Building)
8	.5" Flex Conduit
9	Transformer Mounting Box
10	Toggle Switch Mounted at End of Box
11	Power Supply
12	Primary Electrical Leads (Power by Others)
13	.090" Routed Aluminum Face
14	3/4" Clear Push Thru W/1st Surf. Vinyl & Diffuser
15	2"x3" Alum. Tube
16	1" Alum. Tube Frame Inside Cabinet

Colors & Finishes	
A	7328 White Acrylic Faces
B	Gloss Black Returns and Trimcap
C	Powdercoat Tiger Drylac RAL 7035
D	Vinyl 3630-44 Backed w/ 30% Diffuser
E	Powdercoat Tiger Drylac RAL 2002

Notes	
• McAlister's - to receive White LED	
• Deli - to receive White LED	
• Painted to match Powdercoat Colors	

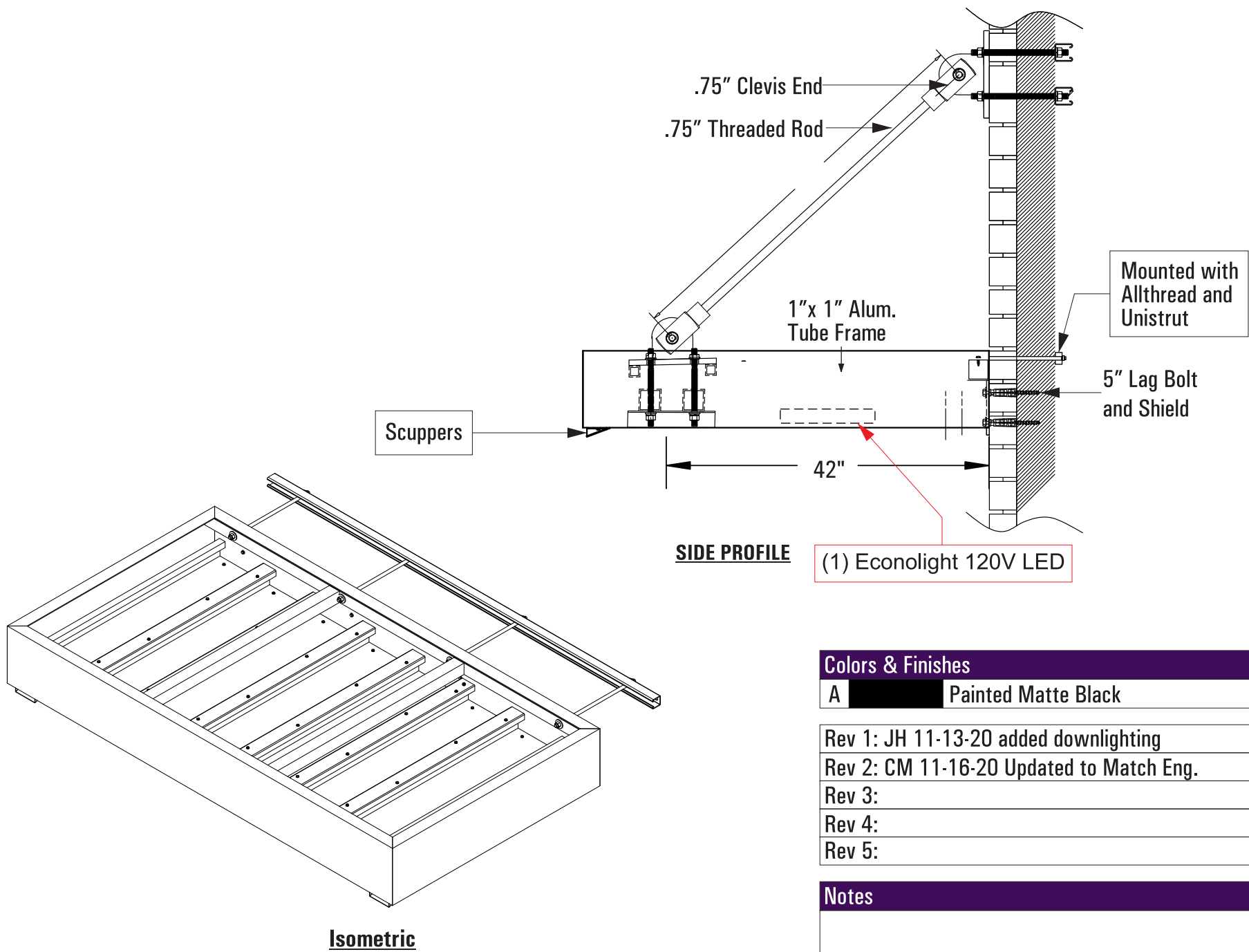
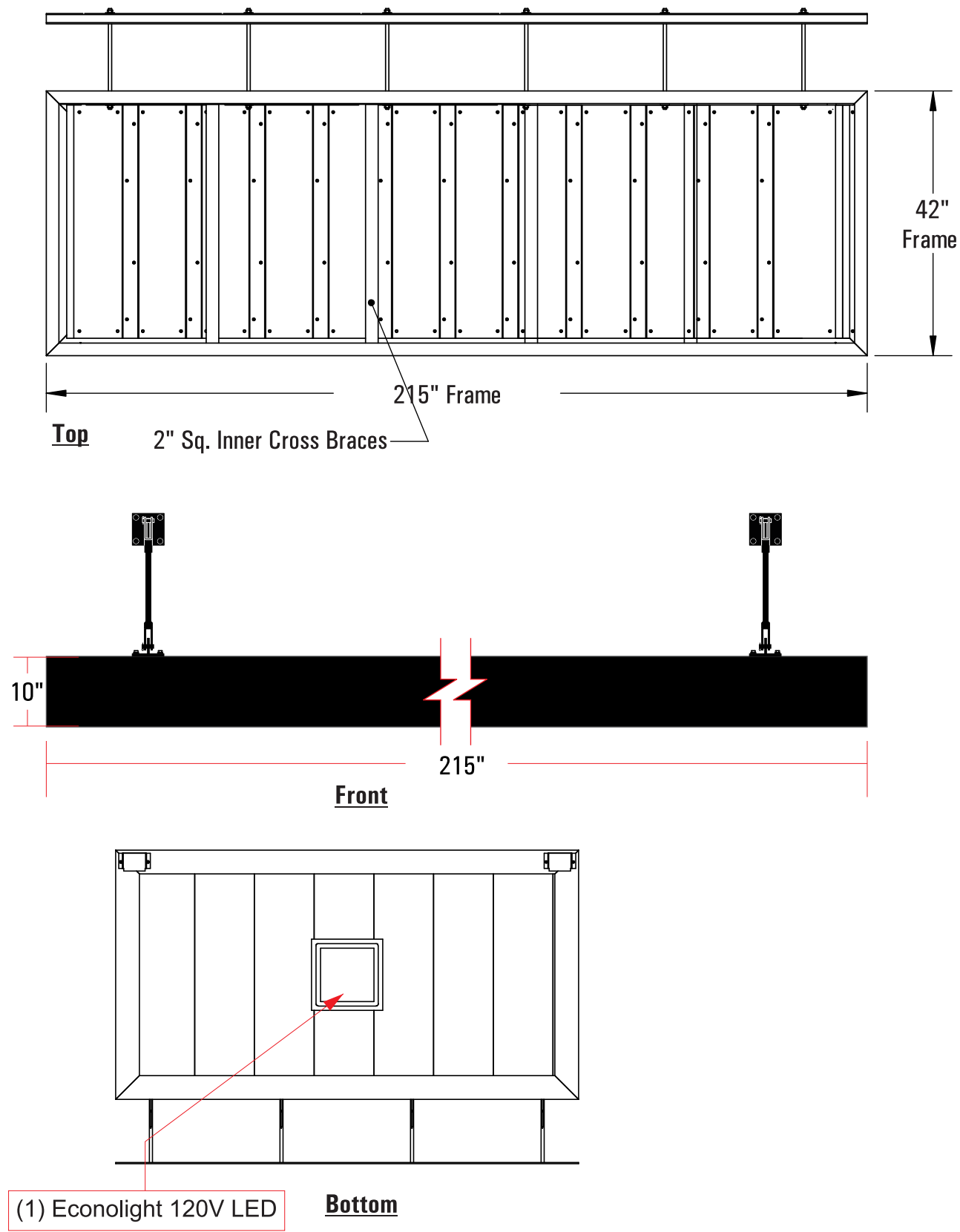
Designer: MEB	Date: 3-11-19
Client: McAlister's	
File Path: z/Restaurant/McAlisters/CorpSpecs	

- ☐ Proof Is Approved. Proceed With Production Of Order
- ☐ Proof Is Approved With Corrections. Make Corrections As Indicated And Proceed With Production Of Order

Signature: _____
I have reviewed this proof in regard to: Sign type, order quantity, and accuracy of icons, symbols, and text (e.g. spelling capitalization, punctuation).

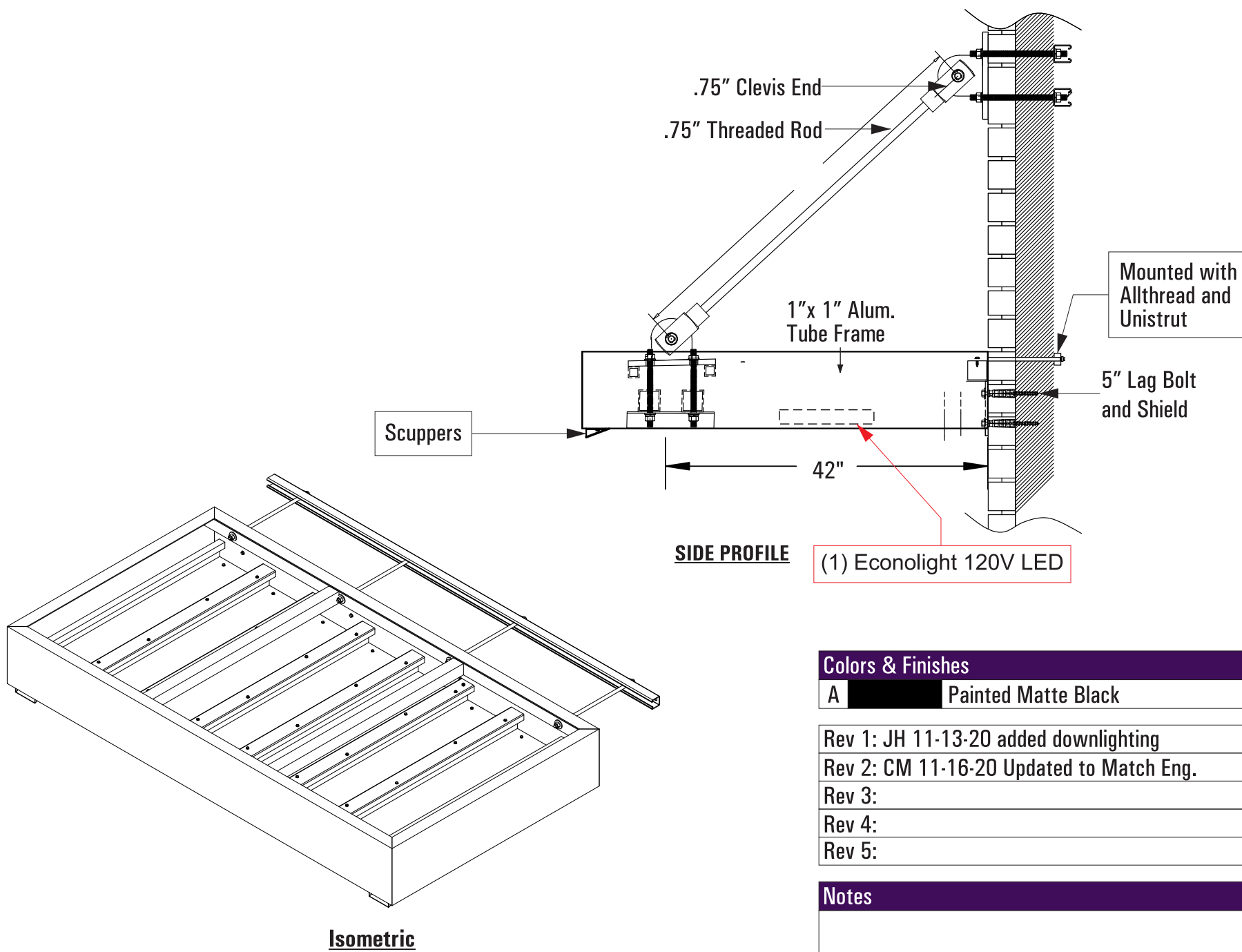
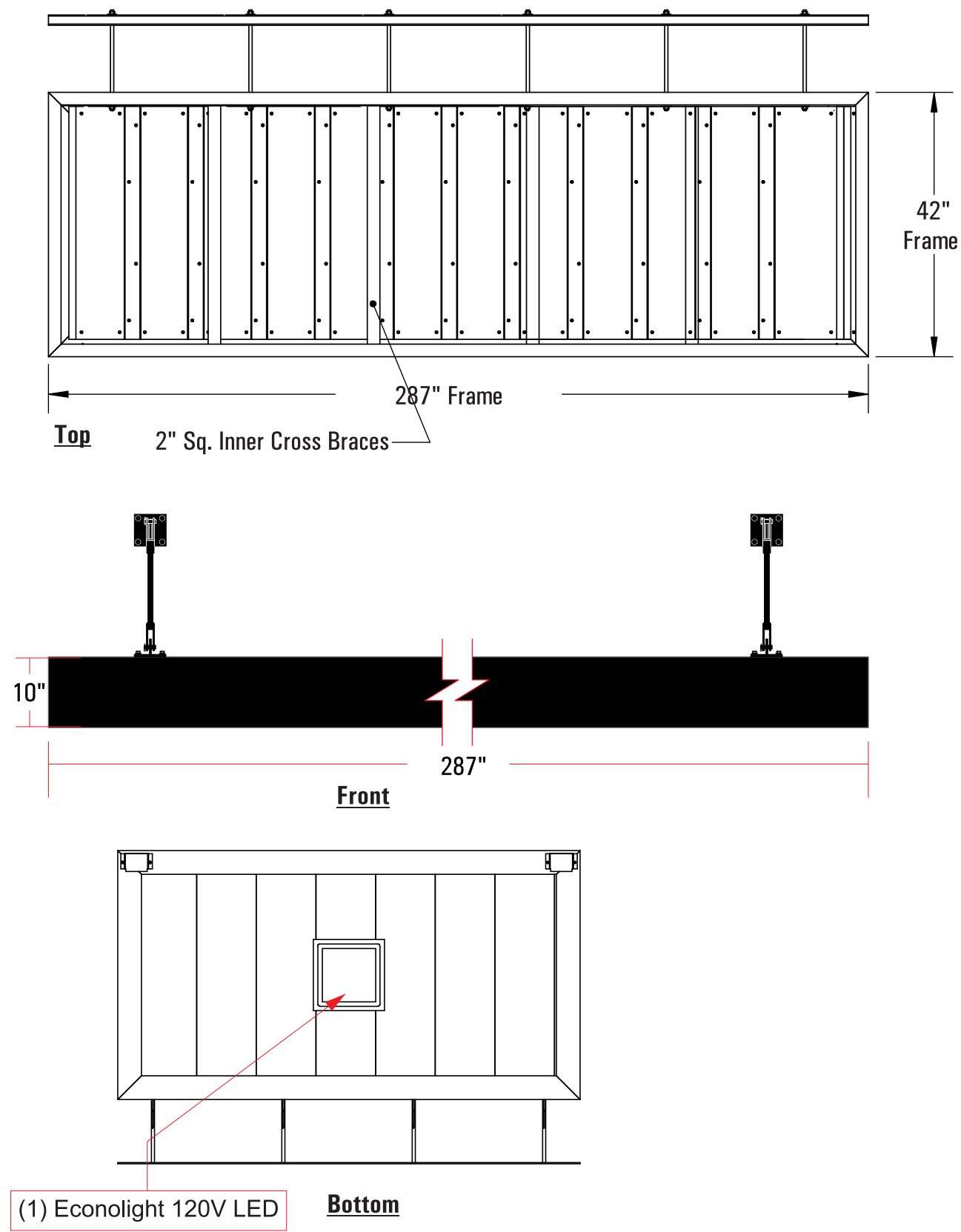
Print Name: _____

Date: _____



Colors & Finishes	
A	Painted Matte Black
Rev 1: JH 11-13-20 added downlighting	
Rev 2: CM 11-16-20 Updated to Match Eng.	
Rev 3:	
Rev 4:	
Rev 5:	
Notes	

- SPECIFICATIONS**
- Canopy to have flat faces all sides
 - Engineering to define details



Colors & Finishes	
A	Painted Matte Black

Rev 1:	JH 11-13-20 added downlighting
Rev 2:	CM 11-16-20 Updated to Match Eng.
Rev 3:	
Rev 4:	
Rev 5:	

Notes

SPECIFICATIONS

- Canopy to have flat faces all sides
- Engineering to define details

Designer: JAC	Date: 1/14/21	Option 1 - JAC
Client: McAlister's -		
File Path: z/Restaurant/McA/		

- ☐ Proof Is Approved. Proceed With Production Of Order
- ☐ Proof Is Approved With Corrections. Make Corrections As Indicated And Proceed With Production Of Order

Signature: _____
I have reviewed this proof in regard to: Sign type, order quantity; and accuracy of icons, symbols, and text (e.g. spelling capitalization, punctuation).
Print Name: _____
Date: _____



Suite Number Font is Arial Bold
Additional Wording is Swis721 BlkCn BT



MON-THURS
10:30 AM - 9:00 PM
FRI & SAT
10:30 AM - 10:00 PM
SUN
10:30 AM - 8:00 PM
SMOKE FREE

Specifications:

Avery SC 900-861-W Vinyl Applied
1st Surface (McAlister's Logo, Store
Hours, and Smoke Free Lettering)

751-010 White Vinyl (Suite Number)



Designer: JAC	Date: 10/11/19
Client: McAlister's	
File Path: z/Restaurant/McAlisters/CorpSpecs	

- ☐ Proof Is Approved. Proceed With Production Of Order
- ☐ Proof Is Approved With Corrections. Make Corrections
As Indicated And Proceed With Production Of Order

Signature: _____

I have reviewed this proof in regard to: Sign type, order quantity, and accuracy
of icons, symbols, and text (e.g. spelling capitalization, punctuation).

Print Name: _____

Date: _____



These plans are the exclusive property of Design Team Sign Company and are the result of the original work of its employees. They are submitted to your company for the sole purpose of your consideration of whether to purchase these plans or to purchase from Design Team Sign Company a product manufactured according to these plans. Distribution or exhibition of the plans to anyone other than employees of your company, or use of these plans to construct a product similar to one embodied herein, is expressly forbidden. In the event that exhibition or construction occurs, Design Team Sign Company expects to be reimbursed \$500 in compensation for time and effort entailed in creating these plans.