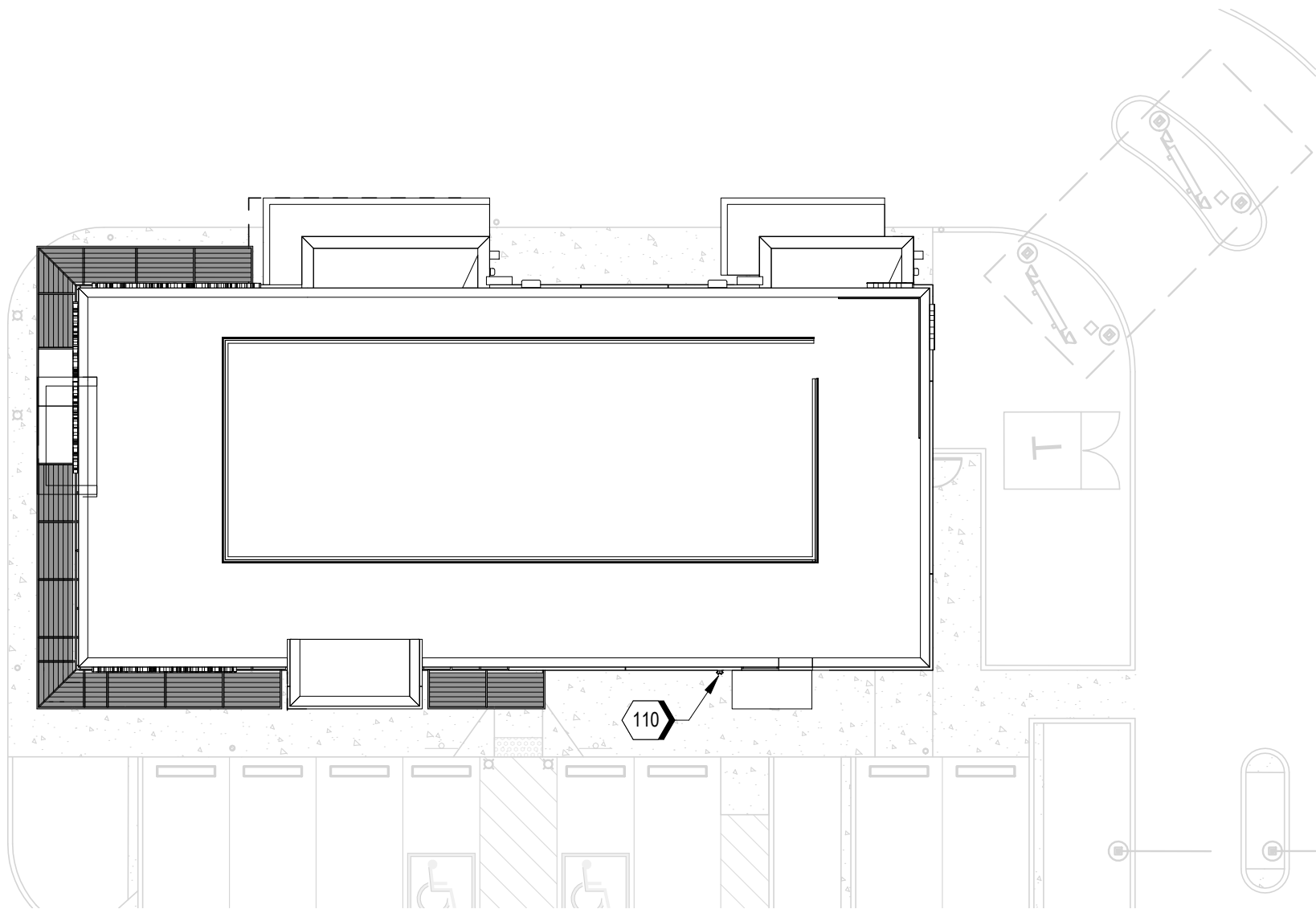


C:\Backup\Revit\WB-Lees Summit-MO_Y18_FPFA_200921_dulm.rvt 12/7/2021 3:52:54 PM

KEYNOTE LEGEND	
110	PROVIDE FIRE DEPARTMENT CONNECTION (FDC) AT LOCATION SHOWN ON DRAWING. IF FDC CANNOT BE INSTALLED AT LOCATION SHOWN, ALTERNATE FDC LOCATION SHALL BE APPROVED BY LOCAL AHJ.

GENERAL NOTES AND ALARM SYMBOLS		
FIRE ALARM SYMBOLS	FIRE ALARM GENERAL NOTES	FIRE PROTECTION GENERAL NOTES
<div><div>FACP</div><div>UL LISTED FIRE ALARM CONTROL PANEL</div></div> <div><div><div>?</div></div><div>ADDRESSABLE PHOTOELECTRIC SMOKE DETECTOR</div></div> <div><div><div><div></div><div></div></div></div><div>WALL MOUNT HORN/STROBE</div></div> <div><div><div><div></div><div></div></div></div><div>CEILING MOUNT HORN/STROBE</div></div> <div><div>F</div><div>ADDRESSABLE MANUAL PULL STATION</div></div> <div><div>WF</div><div>WATER FLOW SWITCH</div></div> <div><div>TS</div><div>TAMPER SWITCH</div></div> <div><div>M</div><div>ADDRESSABLE MONITOR MODULE</div></div>	<div>A. PROVIDE ADDRESSABLE FIRE ALARM SYSTEM THROUGHOUT THE BUILDING IN ACCORDANCE WITH NFPA 72 AND LOCAL BUILDING/ FIRE CODES AND STANDARDS.</div> <div>B. DO NOT LOCATE AREA SMOKE DETECTORS IN DIRECT AIR OR CLOSER THAN 3 FT FROM AN AIR SUPPLY OR RETURN DIFFUSER.</div> <div>C. PROVIDE CONNECTIONS TO THE POWER SERVICE PER NFPA 72 FOR FIRE PANELS.</div> <div>D. PROVIDE 18 AWG MINIMUM INITIATING DEVICE AND SIGNALING LINE CIRCUITS.</div> <div>E. PROVIDE 16 AWG MINIMUM NOTIFICATION APPLIANCE CIRCUITS.</div> <div>F. PROVIDE SLEEVES AND WALL PLATES FOR ALL PENETRATIONS THROUGH WALLS OR FLOORS THAT MIGHT INCLUDE DRILLING THROUGH CONCRETE, METAL, SHEETROCK, OR OTHER MATERIALS. SEAL ALL PENETRATIONS IN FIRE-RATED SEPARATIONS TO MEET THE MINIMUM FIRE RATING OF THE WALL OR FLOOR.</div> <div>G. PROVIDE CLASS B NOTIFICATION AND SIGNAL LINE APPLIANCE CIRCUITS.</div> <div>H. PROVIDE DUCT SMOKE DETECTORS FOR ALL ROOF TOP UNITS (RTU) AND AIR HANDLING UNITS (AHU) SYSTEMS WITH A CAPACITY GREATER THAN 2,000 CFM PER 2018 IBC. SUCH DETECTORS SHOULD BE LOCATED DOWNSTREAM OF LAST DUCT INLET.</div> <div>I. PROVIDE DUCT SMOKE DETECTORS ON RETURN SIDE OF ALL ROOF TOP UNITS (RTU) AND AIR HANDLING UNITS (AHU) SYSTEMS WITH A CAPACITY GREATER THAN 2,000 CFM PER 2018 IMC. SUCH DETECTORS SHOULD BE LOCATED UPSTREAM OF THE CONNECTION BETWEEN THE RETURN AIR RISER AND ANY AIR DUCTS OR PLENUMS.</div> <div>J. CONFIRM WITH LOCAL AHJ OR AMENDMENTS EMERGENCY THAT RESPONDER RADIO COVERAGE IS NOT REQUIRED.</div> <div>K. THESE DOCUMENTS DEPICT A PERFORMANCE LEVEL ENGINEERING DESIGN LAYOUT TO BE UTILIZED AS GUIDANCE FOR THE PLANNING OF THE FIRE ALARM SYSTEM BY THE CONTRACTOR. PROVIDE COMPLETE DOCUMENTS FOR REVIEW AND APPROVAL FROM THE ENGINEER AND THE AUTHORITY HAVING JURISDICTION PRIOR TO INSTALLATION. INCLUDE IN THE SHOP DRAWINGS, CALCULATIONS, AND ANY INSTALLATION AND COMPLY WITH LOCAL CODES AND AMENDMENTS.</div>	<div>A. PROVIDE NEW AUTOMATIC WET FIRE SUPPRESSION SYSTEM THROUGHOUT THE BUILDING IN ACCORDANCE WITH NFPA 13 AND LOCAL BUILDING/FIRE CODES AND STANDARDS.</div> <div>B. PROVIDE FUSIBLE LINK SPRINKLER IN KITCHEN/FOOD PREPERATION AREA IN LIEU OF GLASS BULB SPRINKLERS.</div> <div>C. THIS BUILDING CONSISTS OF A SINGLE WET SPRINKLER ZONE SUPPLIED BY A SINGLE RISER.</div> <div>D. A FIRE PUMP SHOULD BE PROVIDED SHOULD THE SUPPLY NOT BE ABLE TO MEET SYSTEM DEMAND PLUS 10 PSI SAFETY FACTOR MINIMUM.</div> <div>E. PROVIDE INTERMEDIATE-TEMPERATURE DRY PENDENT SPRINKLERS IN FREEZER AND COOLER AREA.</div> <div>F. PROVIDE INTERMEDIATE-TEMPERATURE FUSIBLE LINK SPRINKLERS IN KITCHEN/FOOD PREPARATION AREA.</div> <div>G. PROVIDE ORDINARY TEMPERATURE STANDARD SPRAY CONCEALED PENDENT SPRINKLERS IN DINING AREA.</div> <div>H. WATER SUPPLY TEST USED FOR HYDRAULIC CALCULATION OF FIRE PROTECTION SYSTEM SHALL BE CONDUCTED IN ACCORDANCE WITH NFPA 291 "RECOMMENDED PRACTICE FOR FIRE FLOW TESTING AND MARKING OF HYDRANTS" AND WITHIN ONE YEAR OF SPRINKLER PLAN SUBMITTAL. THE FIRE CODE OFFICIAL SHALL BE NOTIFIED PRIOR TO THE WATER SUPPLY TEST. WATER SUPPLY TEST SHALL BE WITNESSED BY THE FIRE CODE OFFICIAL. THE EXACT LOCATION OF THE STATIC/RESIDUAL HYDRANT AND THE FLOW HYDRANT SHALL BE INDICATED ON THE DESIGN DRAWINGS. ALL FIRE PROTECTION PLAN SUBMITTALS SHALL BE ACCOMPANIED BY A HARD COPY OF THE WATERFLOW TEST REPORT, OR AS APPROVED BY THE FIRE CODE OFFICIAL. WHERE APPLICABLE THE REPORT MUST INDICATE THE DOMINANT WATER TANK LEVEL AT THE TIME OF THE TEST AND THE MAXIMUM AND MINIMUM OPERATING LEVELS OF THE TANK, AS WELL, OR IDENTIFY APPLICABLE WATER SUPPLY FUNCTUATION.</div> <div>J. THESE DOCUMENTS DEPICT A PERFORMANCE LEVEL ENGINEERING DESIGN LAYOUT TO BE UTILIZED AS GUIDANCE FOR THE PLANNING OF THE FIRE ALARM SYSTEM BY THE CONTRACTOR. PROVIDE COMPLETE DOCUMENTS FOR REVIEW AND APPROVAL FROM THE ENGINEER AND THE AUTHORITY HAVING JURISDICTION PRIOR TO INSTALLATION. INCLUDE IN THE SHOP DRAWINGS, CALCULATIONS, AND ANY INSTALLATION AND COMPLY WITH LOCAL CODES AND AMENDMENTS.</div>



A3 SITE PLAN
1/16" = 1'-0"



ms consultants, inc.
engineers, architects, planners
2221 Schrock Road
Columbus, Ohio 43229
p 614.898.7100
f 614.898.7570
www.msconsultants.com

WHATABURGER 20-M
LEE'S SUMMIT

1460 NE DOUGLAS ST
LEE'S SUMMIT, MO



NOTICE: THIS ARCHITECTURAL AND ENGINEERING DRAWING IS GIVEN IN CONFIDENCE AND SHALL BE USED ONLY PURSUANT TO THE AGREEMENT WITH THE ARCHITECT. NO OTHER USE, DISSEMINATION, OR DUPLICATION MAY BE MADE WITHOUT PRIOR WRITTEN CONSENT OF THE ARCHITECT. ALL COMMON LAW RIGHTS OF COPYRIGHT AND OTHERWISE ARE HEREBY SPECIFICALLY RESERVED.



12/22/20
PROFESSIONAL OF RECORD:
JASON E. CHRISTOFF No. 20012002143
EXP. DATE: 12/31/20

REV	DESCRIPTION	DATE

Project No.: 62-40497-01

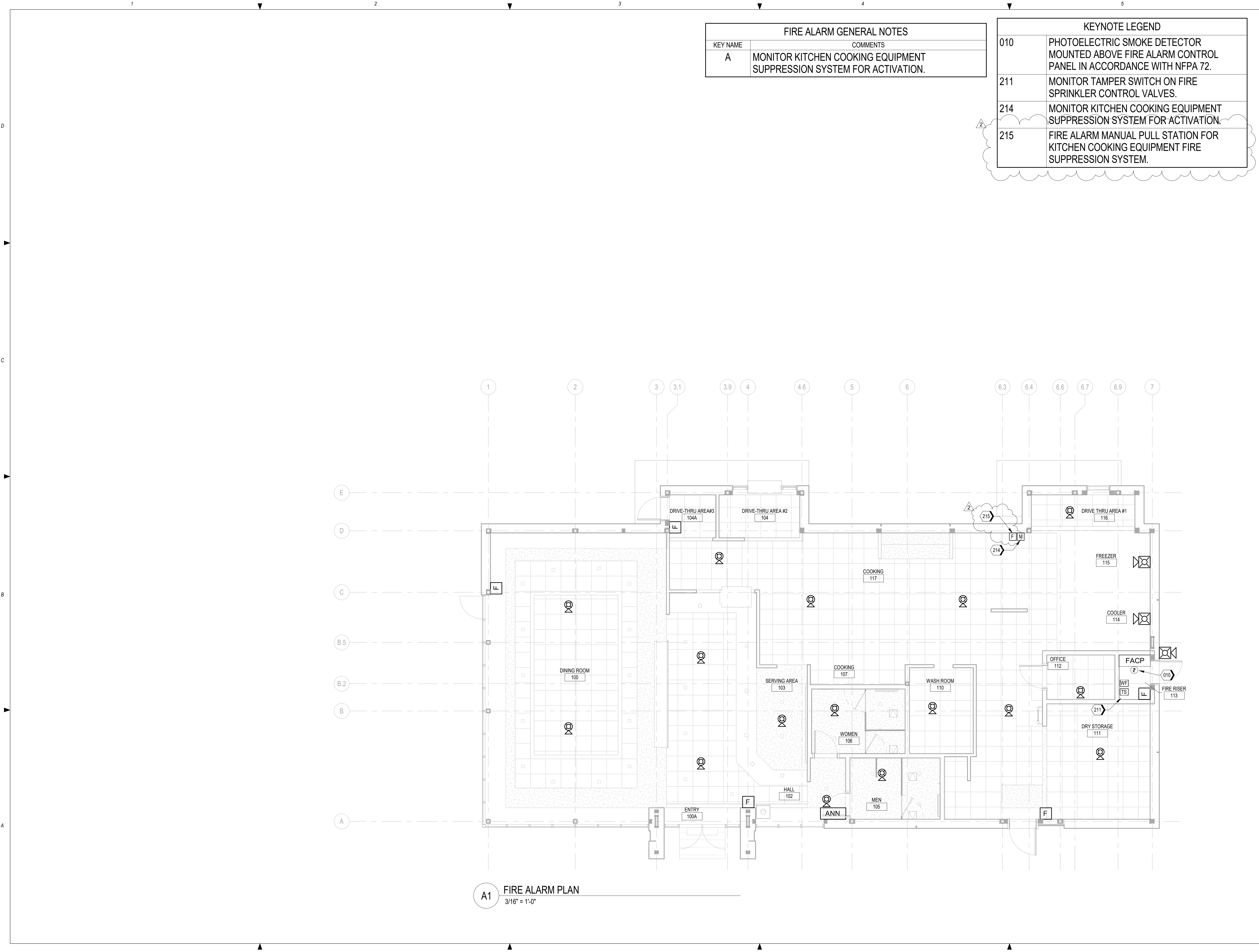
Client Project No.:

Drawing Title:

SITE PLAN

Date: 12/22/2020	Phase: PERMIT SET
Designed: DCU	Drawing No.:
Drawn: DCU	F0.1
Checked: KFF	

C:\Backup\Revit\WB-Lees Summit-MO_Y18_FPFA_200921_dulm.rvt 12/7/2021 3:52:56 PM



FIRE ALARM GENERAL NOTES	
KEY NAME	COMMENTS
A	MONITOR KITCHEN COOKING EQUIPMENT SUPPRESSION SYSTEM FOR ACTIVATION.

KEYNOTE LEGEND	
010	PHOTOELECTRIC SMOKE DETECTOR MOUNTED ABOVE FIRE ALARM CONTROL PANEL IN ACCORDANCE WITH NFPA 72.
211	MONITOR TAMPER SWITCH ON FIRE SPRINKLER CONTROL VALVES.
214	MONITOR KITCHEN COOKING EQUIPMENT SUPPRESSION SYSTEM FOR ACTIVATION.
215	FIRE ALARM MANUAL PULL STATION FOR KITCHEN COOKING EQUIPMENT FIRE SUPPRESSION SYSTEM.



ms consultants, inc.
engineers, architects, planners
2221 Schrock Road
Columbus, Ohio 43229
p 614.898.7100
f 614.898.7570
www.msconsultants.com

WHATABURGER 20-M

LEE'S SUMMIT

1460 NE DOUGLAS ST
LEE'S SUMMIT, MO



NOTICE: THIS ARCHITECTURAL AND ENGINEERING DRAWING IS GIVEN IN CONFIDENCE AND SHALL BE USED ONLY PURSUANT TO THE AGREEMENT WITH THE ARCHITECT. NO OTHER USE, DISSEMINATION, OR DUPLICATION MAY BE MADE WITHOUT PRIOR WRITTEN CONSENT OF THE ARCHITECT. ALL COMMON LAW RIGHTS OF COPYRIGHT AND OTHERWISE ARE HEREBY SPECIFICALLY RESERVED.



12/22/20
PROFESSIONAL OF RECORD:
JASON E. CHRISTOFF No. 20012002143
EXP. DATE: 12/31/20

REV	DESCRIPTION	DATE
1	100% CLIENT REVIEW SET	10/30/20
2	REV-1 Plan Review	01/27/21

Project No.: 62-40497-01
Client Project No.:

Drawing Title:
FIRE ALARM PLAN

Date: 12/22/2020 Phase: PERMIT SET
Designed: DCU Drawing No.:
Drawn: DCU
Checked: KFF

F1.1

FIRE SPRINKLER DESIGN CRITERIA TABLE					
PATTERN	SYSTEM	AREA	ROOM/SPACE	OCCUPANCY	DENSITY/AREA
NO SYMBOL	WET	1,554	DINING ROOM, RESTROOMS, OFFICE	LIGHT HAZARD	0.10 GPM/SF OVER MOST REMOTE 1,500SF
	WET	1,748	STORAGE, ELECTRICAL, KITCHEN	ORDINARY HAZARD GROUP 1	0.15 GPM/SF OVER MOST REMOTE 1,500SF

KEYNOTE LEGEND	
006	UNDERGROUND 6 INCH FIRE PROTECTION WATER CONNECTION LOCATION TO CITY WATER SUPPLY
110	PROVIDE FIRE DEPARTMENT CONNECTION (FDC) AT LOCATION SHOWN ON DRAWING. IF FDC CANNOT BE INSTALLED AT LOCATION SHOWN, ALTERNATE FDC LOCATION SHALL BE APPROVED BY LOCAL AHJ.
113	SPRINKLERS ARE NOT REQUIRED UNDER NONCOMBUSTIBLE CANOPY PER 2019 NFPA 13 9.2.3.2.
115	FIRE PROTECTION WET SYSTEM DRAIN.



ms consultants, inc.
engineers, architects, planners
2221 Schrock Road
Columbus, Ohio 43229
p 614.898.7100
f 614.898.7570
www.msconsultants.com

WHATABURGER 20-M
LEE'S SUMMIT

1460 NE DOUGLAS ST
LEE'S SUMMIT, MO



NOTICE: THIS ARCHITECTURAL AND ENGINEERING DRAWING IS GIVEN IN CONFIDENCE AND SHALL BE USED ONLY PURSUANT TO THE AGREEMENT WITH THE ARCHITECT. NO OTHER USE, DISSEMINATION, OR DUPLICATION MAY BE MADE WITHOUT PRIOR WRITTEN CONSENT OF THE ARCHITECT. ALL COMMON LAW RIGHTS OF COPYRIGHT AND OTHERWISE ARE HEREBY SPECIFICALLY RESERVED.



12/22/20
PROFESSIONAL OF RECORD:
JASON E. CHRISTOFF No. 20012002143
EXP. DATE: 12/31/20

REV	DESCRIPTION	DATE

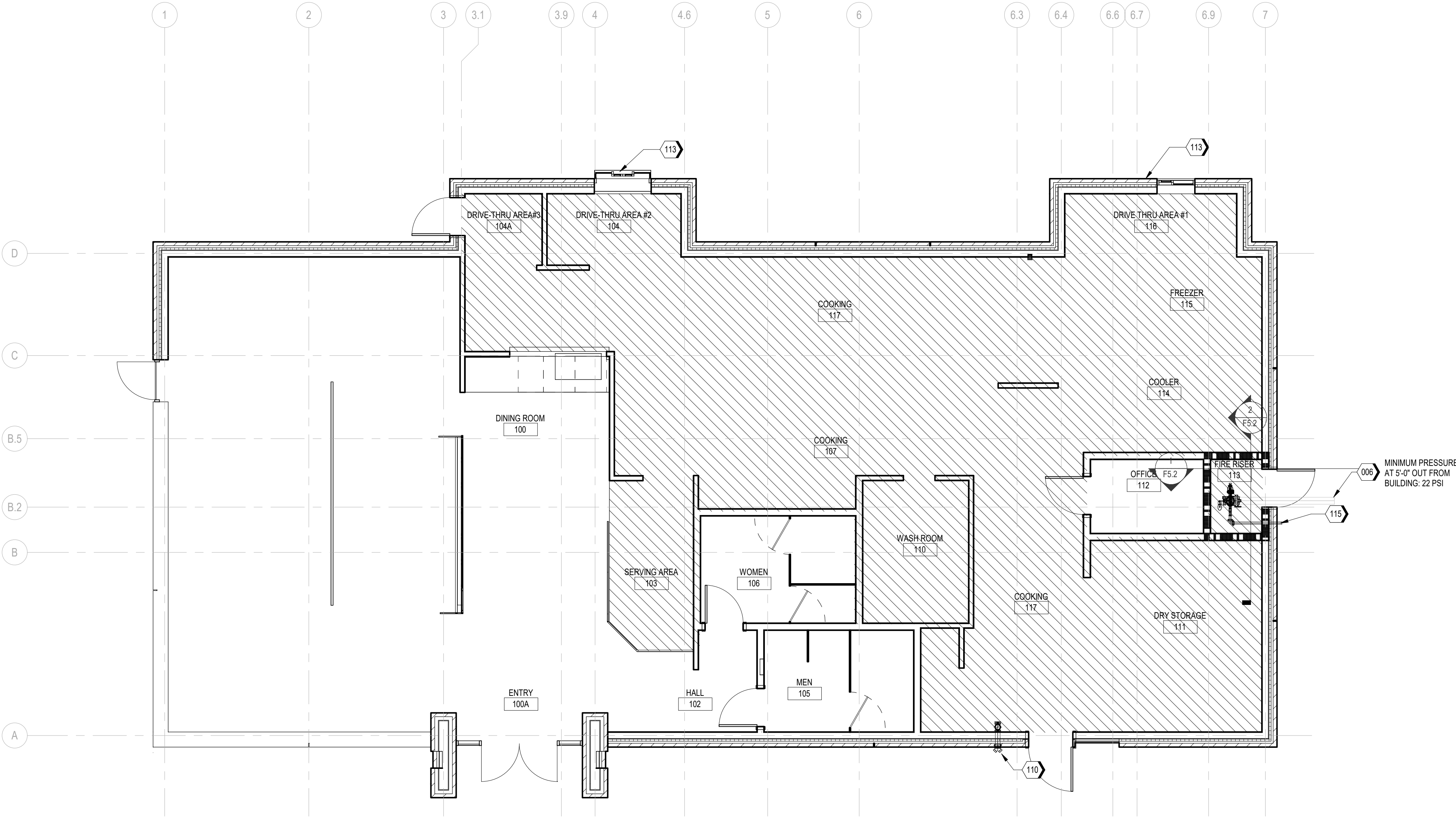
Project No.: 62-40497-01

Client Project No.:

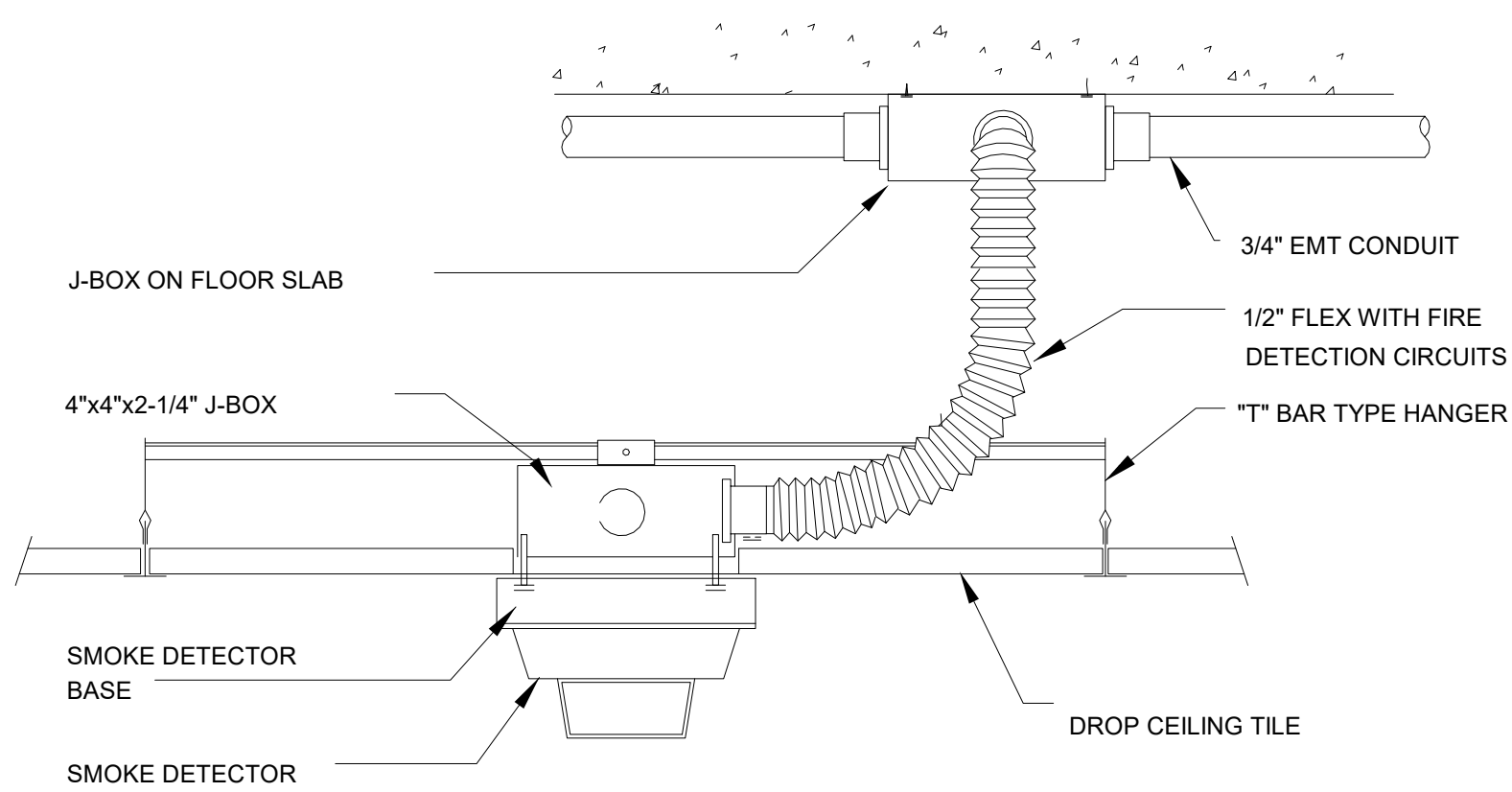
Drawing Title:

FIRE SPRINKLER PLAN

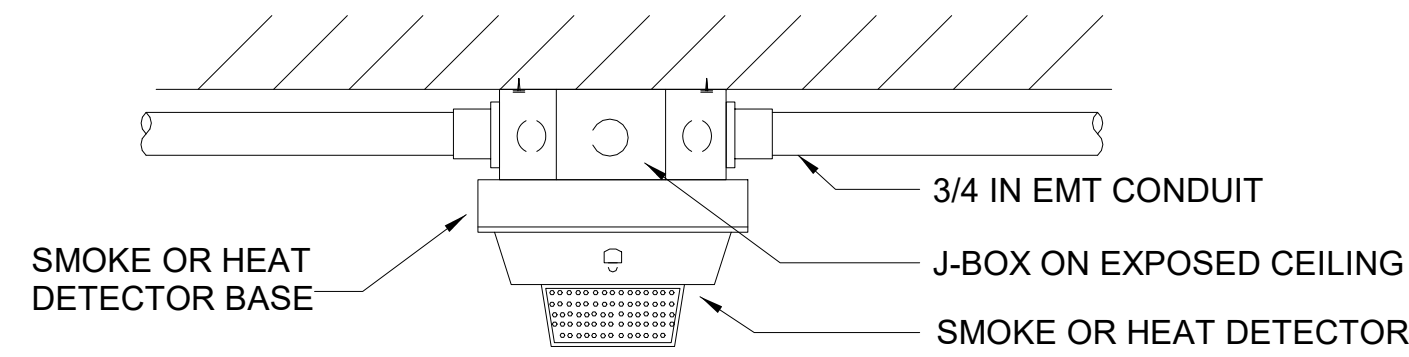
Date:	12/22/2020	Phase:	PERMIT SET
Designed:	DCU	Drawing No.:	F1.2
Drawn:	DCU		
Checked:	KFF		



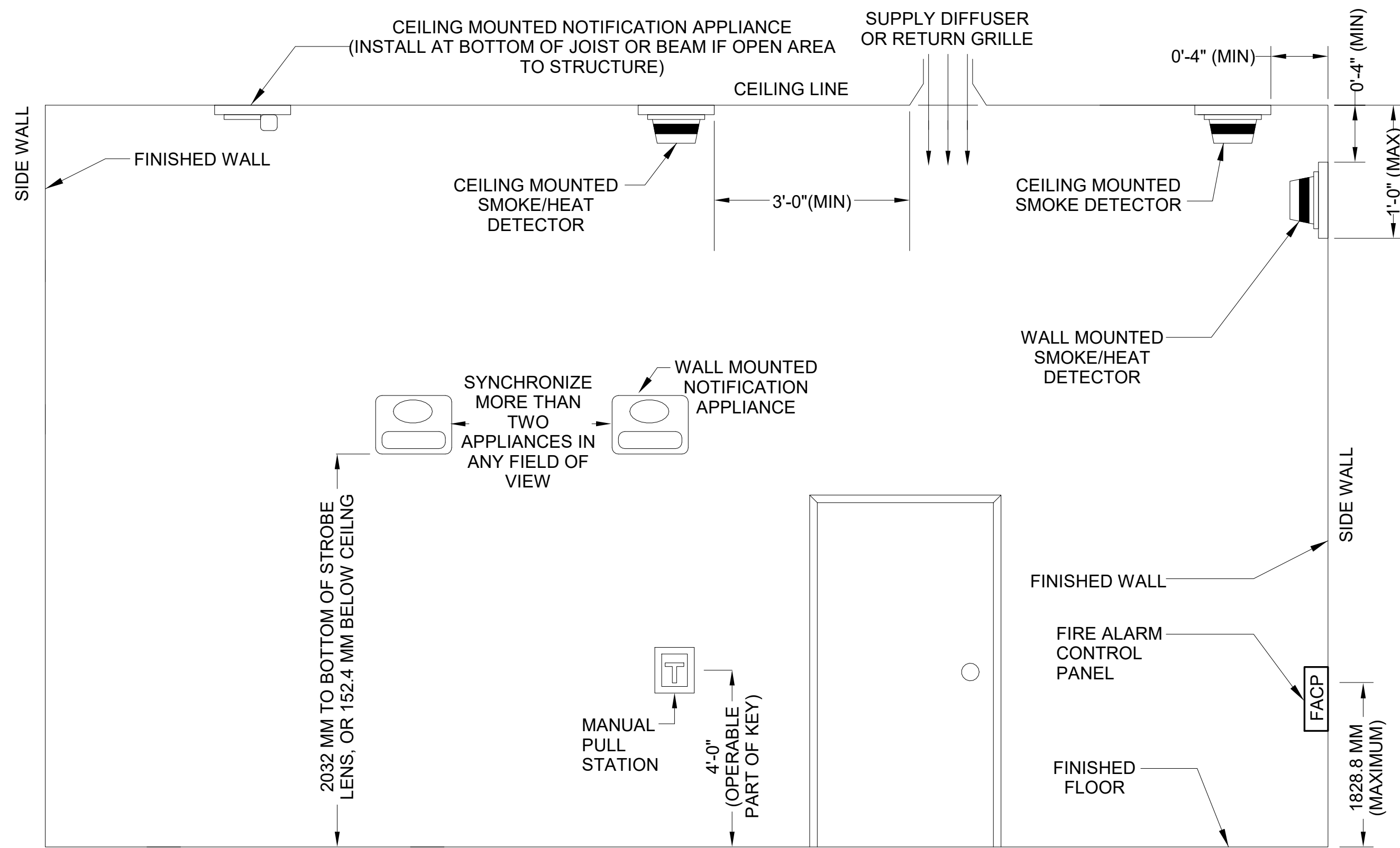
A3 FIRE SPRINKLER PLAN
3/16" = 1'-0"



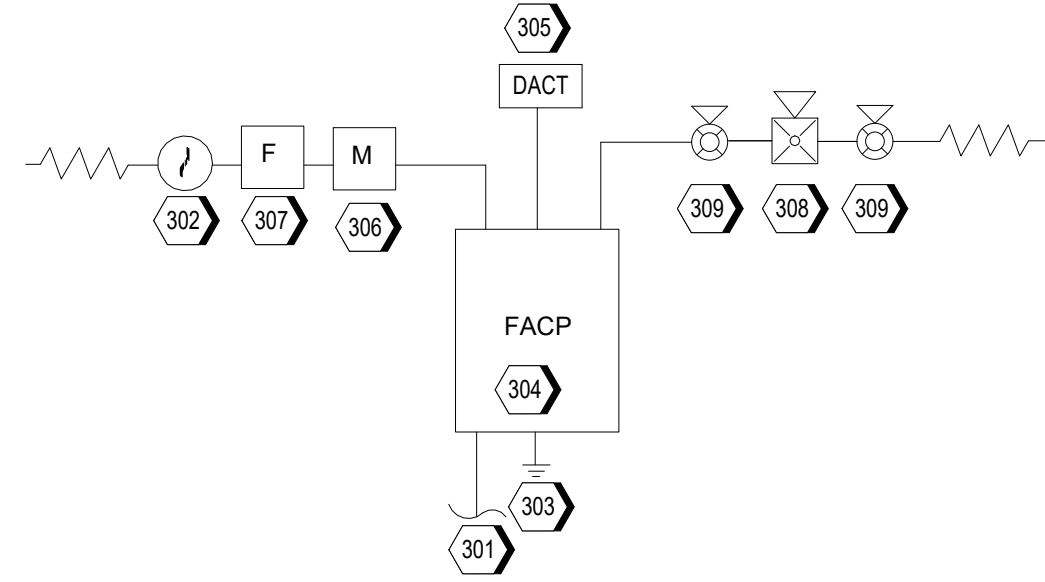
2 DETECTOR DETAIL-DROP CIELING
N.T.S.



3 EXPOSED STRUCTURE DETECTOR DETAIL
N.T.S.



5 DEVICE MOUNTING DETAIL
N.T.S.



4 FIRE ALARM RISER DIAGRAM
N.T.S.

KEYNOTE LEGEND	
301	CONNECT TO 120 VAC, 20 AMP DEDICATED FIRE ALARM CIRCUIT.
302	SMOKE DETECTOR TO PROTECT FIRE ALARM PANEL AND ANY REMOTE NOTIFICATION POWER SUPPLY.
303	GROUND PER NEC AND NFPA 72.
304	FIRE ALARM PANEL WITH INTEGRATED TRANSCIEVER.
305	DIGITAL ALARM COMMUNICATOR TRANSMITTER (DACT) TO TRANSMIT FIRE ALARM PANEL SIGNALS TO REMOTE MONITORING STATION.
306	MONITOR FOR KITCHEN COOKING EQUIPMENT SUPPRESSION SYSTEM FOR ACTIVATION.
307	FIRE ALARM MANUAL PULL STATION AT ALL EXITS.
308	PROVIDE AUDIBLE AND VISUAL NOTIFICATION APPLIANCES THROUGHOUT THE BUILDING AS REQUIRED BY CODE TO MEET THE AUDIBILITY, AND VISIBILITY REQUIREMENTS OF NFPA 72.
309	CEILING MOUNTED HORN/STROBE.

		SYSTEM OUTPUTS												
		CONTROL UNIT ANNUNCIATION		NOTIFICATION		CONTROL FUNC		FACP FUNC						
1	MANUAL FIRE ALARM PULL STATION													
2	SMOKE DETECTOR													
3	ACTIVATION OF KITCHEN HOOD SUPPRESSION SYSTEM													
4	SPRINKLER SYSTEM TAMPER SWITCH ACTIVATED													
5	FIRE ALARM AC POWER FAILURE													
6	FIRE ALARM SYSTEM LOW BATTERY													
7	OPEN CIRCUIT													
8	GROUND FAULT													
9	NOTIFICATION APPLIANCE CIRCUIT SHORT													
10	SYSTEM SILENCE													
11	SYSTEM RESET													

1 FIRE ALARM SEQUENCE OF OPERATIONS
N.T.S.



ms consultants, inc.
engineers, architects, planners
2221 Schrock Road
Columbus, Ohio 43229
p 614.898.7100
f 614.898.7570
www.msconsultants.com

WHATABURGER 20-M
LEE'S SUMMIT

1460 NE DOUGLAS ST
LEE'S SUMMIT, MO



NOTICE: THIS ARCHITECTURAL AND ENGINEERING DRAWING IS GIVEN IN CONFIDENCE AND SHALL BE USED ONLY PURSUANT TO THE AGREEMENT WITH THE ARCHITECT. NO OTHER USE, DISSEMINATION, OR DUPLICATION MAY BE MADE WITHOUT PRIOR WRITTEN CONSENT OF THE ARCHITECT. ALL COMMON LAW RIGHTS OF COPYRIGHT AND OTHERWISE ARE HEREBY SPECIFICALLY RESERVED.



12/22/20
PROFESSIONAL OF RECORD:
JASON E. CHRISTOFF No. 20012002143
EXP. DATE: 12/31/20

REV	DESCRIPTION	DATE

Project No.: 62-40497-01

Client Project No.:

Drawing Title:

FIRE ALARM DETAIL

Date: 12/22/2020 Phase: PERMIT SET

Designed: DCU

Drawn: DCU

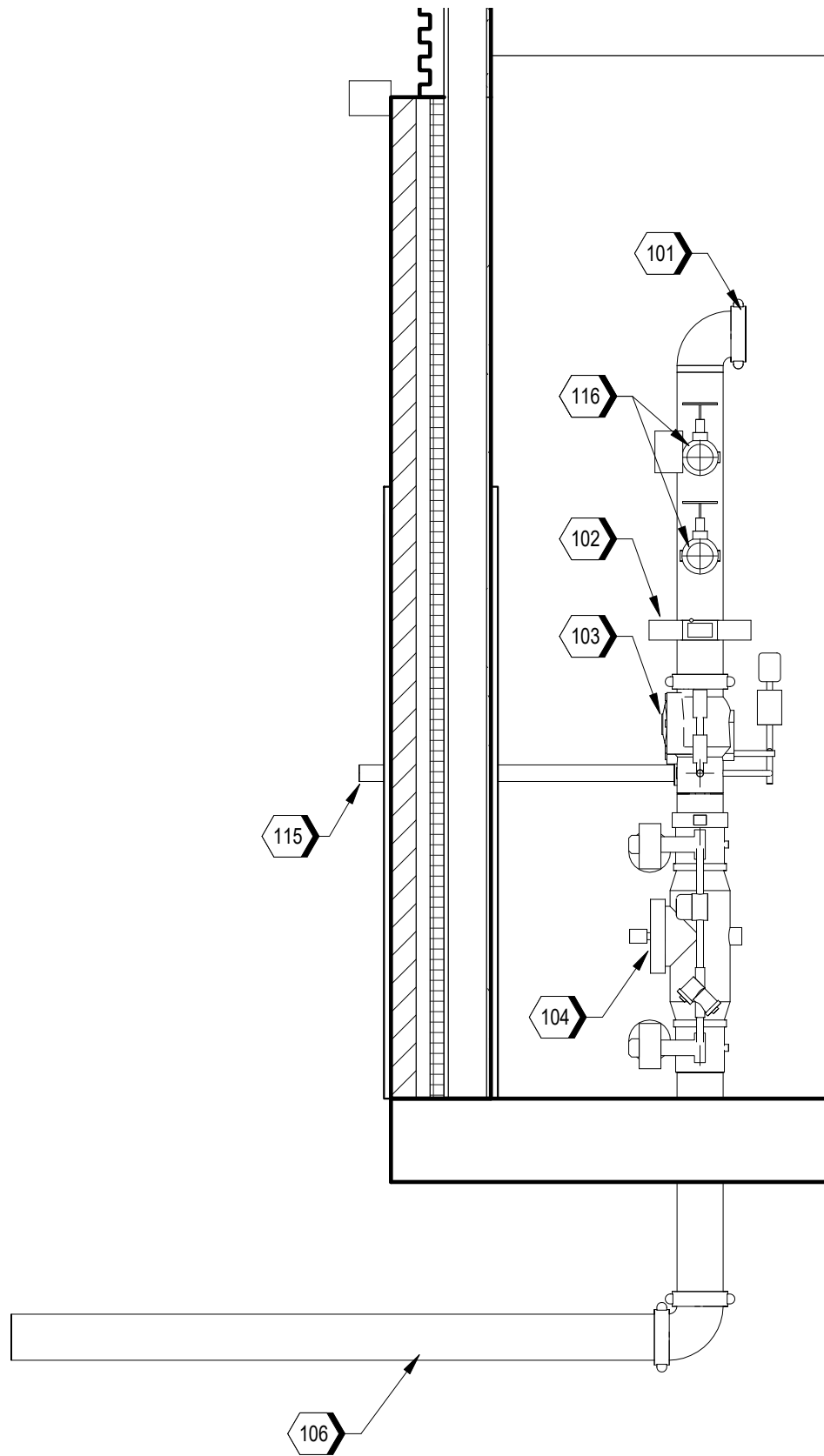
Checked: KFF

Drawing No.:

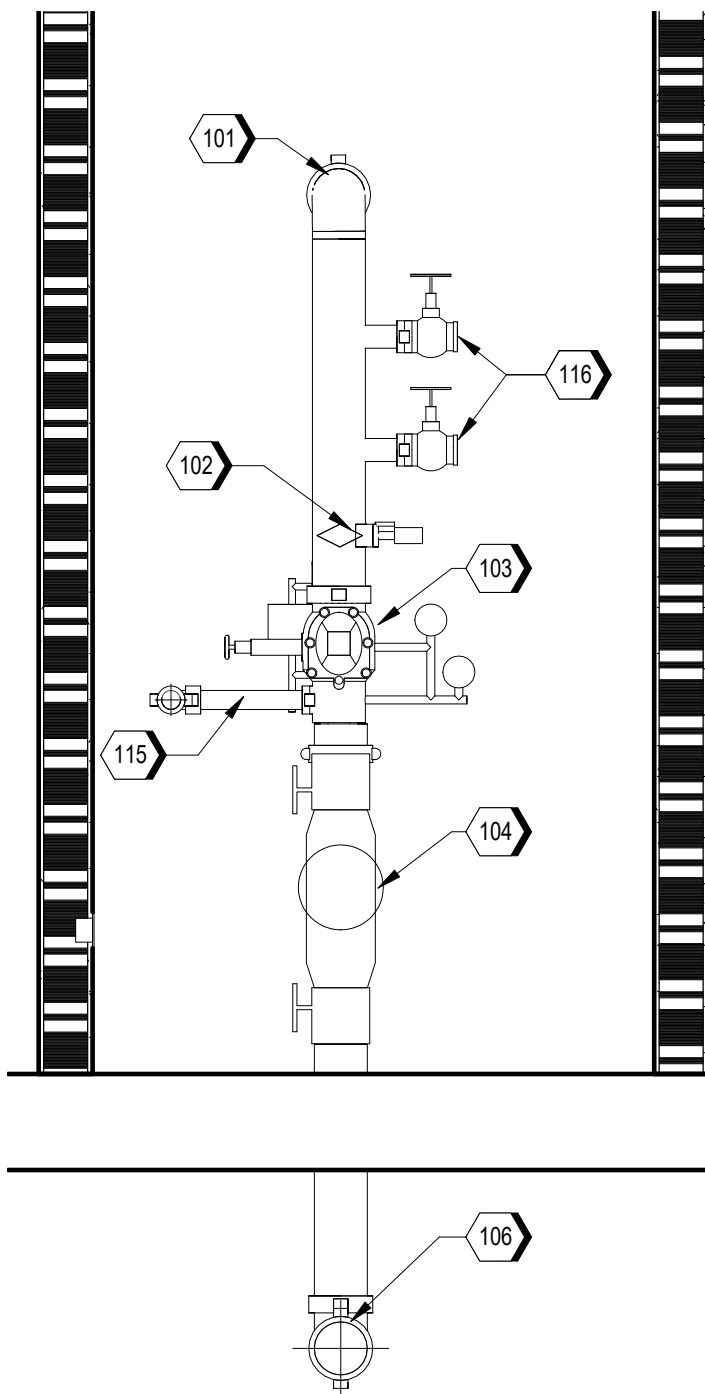
F5.1

C:\Backup\Revit\WB-Lees Summit-MO_Y18_FPFA_200921_dulm.rvt 12/7/2021 3:53:01 PM

A B C D



1 FIRE RISER DETAIL - I
1/2" = 1'-0"



2 FIRE RISER DETAIL - II
1/2" = 1'-0"

KEYNOTE LEGEND	
101	FIRE SPRINKLER SYSTEM MAIN.
102	WATER FLOW INDICATOR.
103	ALARM CHECK VALVE ASSEMBLY.
104	6-INCH DOUBLE CHECK DETECTOR ASSEMBLY BACKFLOW PREVENTER WITH TAMPER SWITCHES.
106	6-INCH FIRE SPRINKLER SYSTEM WATER SUPPLY.
115	FIRE PROTECTION WET SYSTEM DRAIN.
116	HOSE TEST CONNECTION.



ms consultants, inc.
engineers, architects, planners
2221 Schrock Road
Columbus, Ohio 43229
p 614.898.7100
f 614.898.7570
www.msconsultants.com

**WHATABURGER 20-M
LEE'S SUMMIT**

1460 NE DOUGLAS ST
LEE'S SUMMIT, MO



NOTICE: THIS ARCHITECTURAL AND ENGINEERING
DRAWING IS GIVEN IN CONFIDENCE AND SHALL BE USED
ONLY PURSUANT TO THE AGREEMENT WITH THE
ARCHITECT. NO OTHER USE, DISSEMINATION, OR
DUPLICATION MAY BE MADE WITHOUT PRIOR WRITTEN
CONSENT OF THE ARCHITECT. ALL COMMON LAW RIGHTS
OF COPYRIGHT AND OTHERWISE ARE HEREBY
SPECIFICALLY RESERVED.



12/22/20
PROFESSIONAL OF RECORD:
JASON E. CHRISTOFF No. 20012002143
EXP. DATE: 12/31/20

REV	DESCRIPTION	DATE

Project No.: 62-40497-01

Client Project No.:

Drawing Title:

FIRE SPRINKLER DETAIL

Date: 12/22/2020	Phase: PERMIT SET
Designed: DCU	Drawing No.:
Drawn: DCU	F5.2
Checked: KFF	