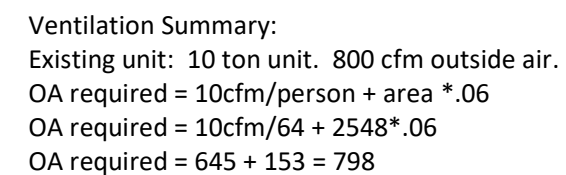




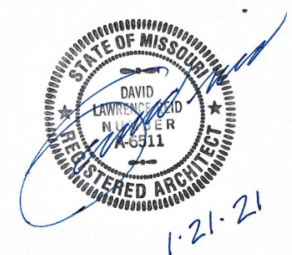
Occupant Load Schedule - Working				
Number	Name	Area	Occupancy Use	Max Occupancy
101	Acting Lab	2,809 SF	ACTING LAB	45
102	Circulation	352 SF		
103	Changing Room 1	75 SF		1
104	Changing Room 2	75 SF		1
105	Women WC	56 SF	* NON-SIMULTANEOUS USE COMMON AREA	
106	Men WC	57 SF	* NON-SIMULTANEOUS USE COMMON AREA	
Grand total: 6		3,424 SF		47

Plumbing Fixture Schedule			
Room Name	Fixture	Required	Count
Level 1			
Circulation	Drinking Fountain (Double)	1	1
Circulation	Service Sinks	1	1
Men WC	SINK	1	1
Men WC	WATER CLOSET	1	1
Women WC	SINK	1	1
Women WC	WATER CLOSET	1	1

**gouldevans**  
4200 pennsylvania  
kansas city, mo 66111

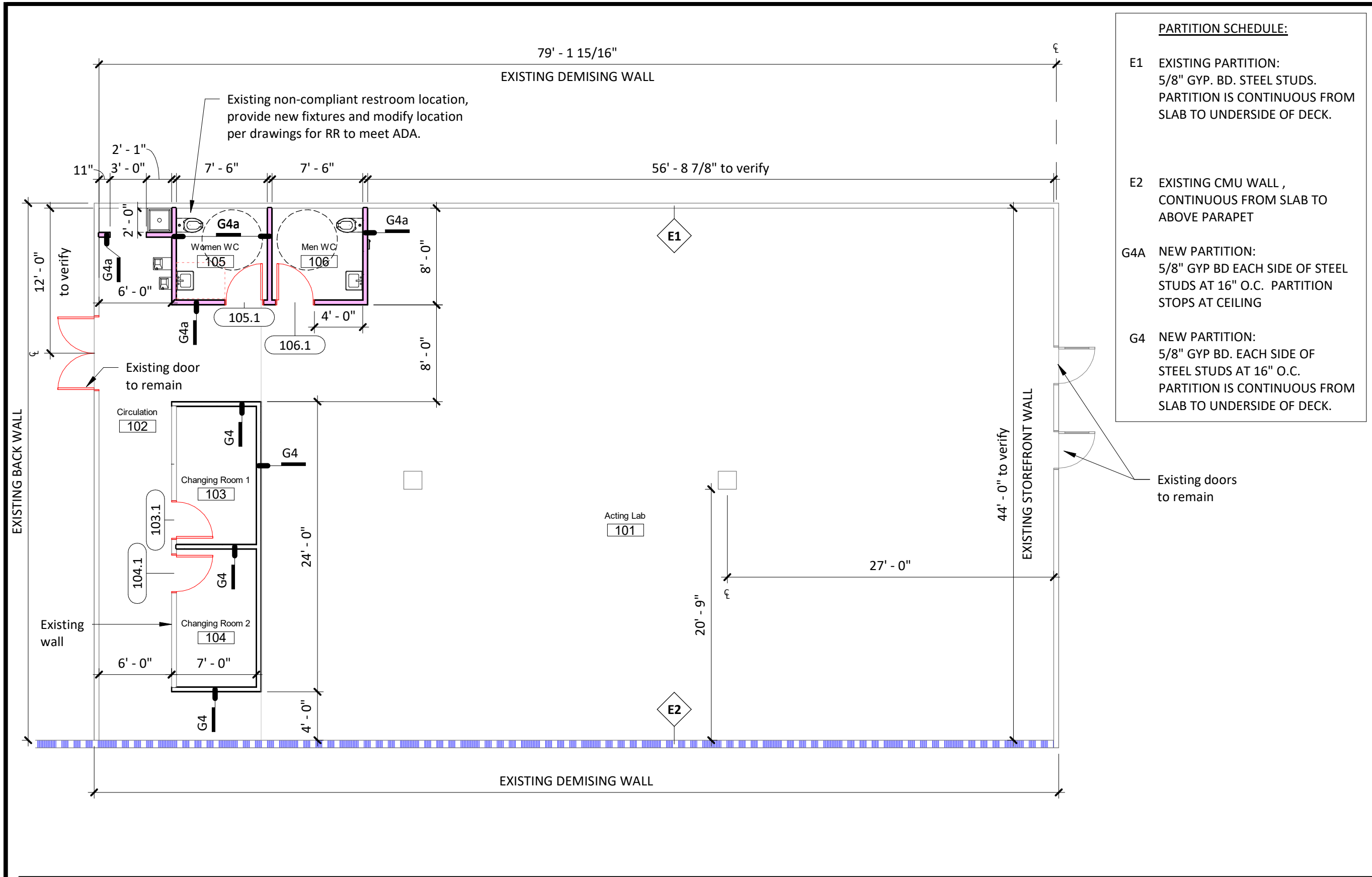


DATE:	DRAWN BY:	CHECKED BY:	REV:
01/21/2021	LA	SZ	



## CODE PLAN

# Level 1 - Code Plan 1



Level 1 - New Plan 2  
1/8" = 1'-0"

**GOULD EVANS #**  
0220-4600

**PROJECT TYPE**  
NEW CONSTRUCTION

**gouldevans**  
4200 pennsylvania  
kansas city, mo 66111

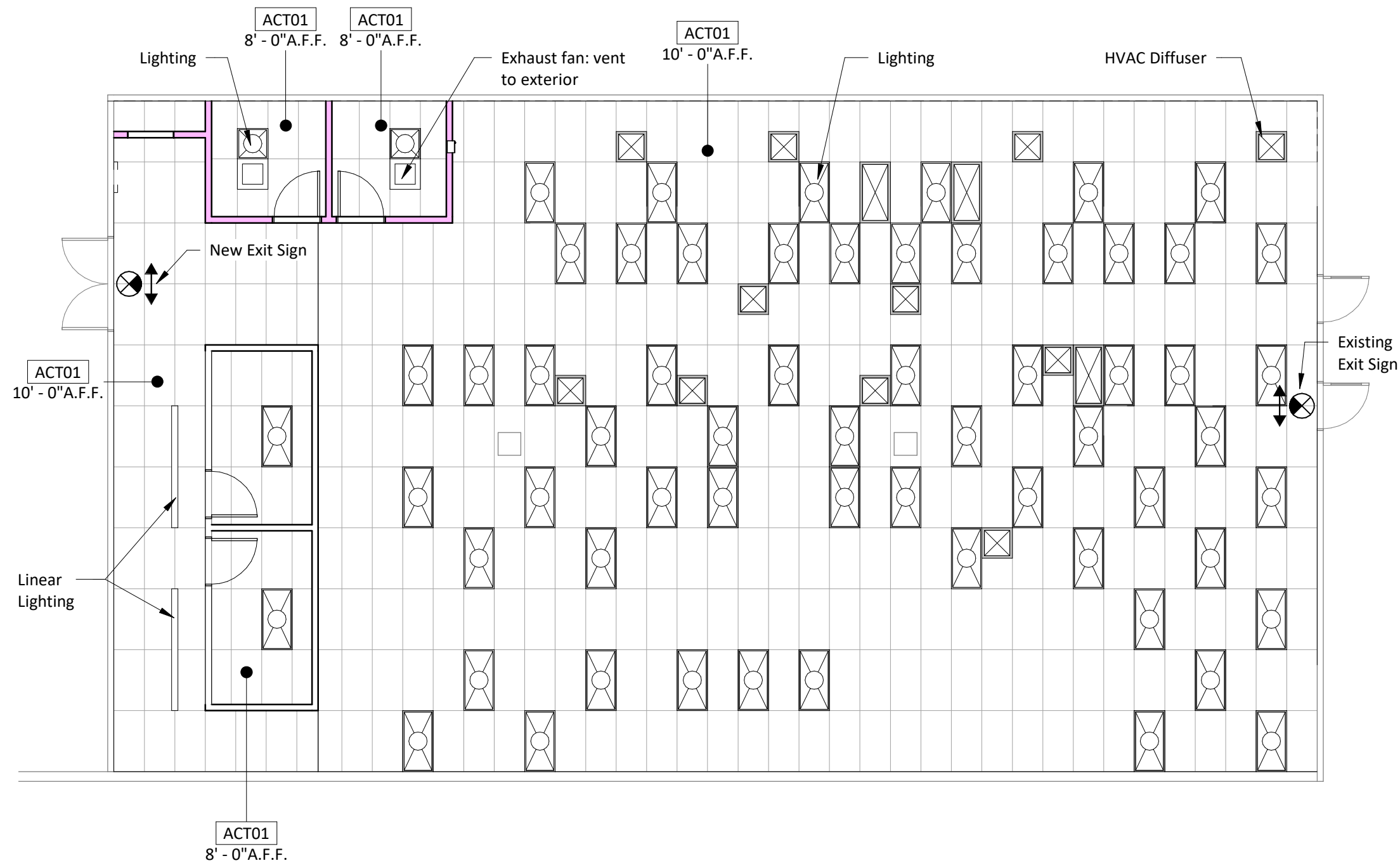
**SUMMIT THEATRE GROUP**

**RENOVATION**

DATE:	DRAWN BY:	CHECKED BY:	REV:
01/21/2021	LA	SZ	

3/4

**FLOOR PLAN**



REFLECTED CEILING PLAN NOTES:

1. Light fixture and diffusers indicate their current locations.
2. All exit signs & emergency lighting to have internal battery backup, verify operation and replace if necessary.
3. Contractor to verify emergency lighting to insure minimum of 1 footcandle along egress path. Add wallpack fixture at each exit (outside) if necessary.
4. Contractor to install smoke detector in rooftop unit return air duct. Wire the smoke detector direct to unit to shut down in the event smoke is sensed.
5. Adjust the existing rooftop unit outside air damper to provide 800 cfm of outside air.
6. Modify exhaust air ductwork from restrooms to extend up through the roof. Provide a gooseneck with birdscreen on roof.

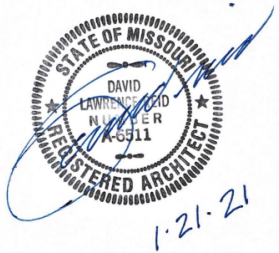
GOULD EVANS #  
0220-4600

PROJECT TYPE  
NEW CONSTRUCTION

**gouldevans**  
4200 pennsylvania  
kansas city, mo 66111

SUMMIT THEATRE GROUP  
**RENOVATION**

DATE: 01/21/2021  
DRAWN BY: LA  
CHECKED BY: SZ  
REV:



Level 1 - New Ceiling Plan **1**  
1/8" = 1'-0"