

Ground Floor

RELEASE FOR CONSTRUCTION AS NOTED ON PLANS REVIEW DEVELOPMENT SERVICES LEE'S SUMMIT, MISSOURI 01/21/2021

- GENERAL NOTES:**
- See Attached Installation Guide
 - Care should be taken when setting i-joists to avoid plumbing drops and mechanical chases. (DO NOT CUT OR DRILL THROUGH I-JOISTS FLANGES)
 - All walls, headers and beams are to be adequately designed and supplied by others to support all loads applied to them
 - (Dealer) recommends gluing and nailing floor sheathing to i-joists
 - i-joist spacing is not to exceed spacing shown on placement plan.
 - All headers are assumed dropped below i-joist framing unless noted otherwise.
 - Solid blocking down to foundation is to be provided by others at all headers, beams and girder bearing points.
 - Provisions must be made by others to avoid excessive moisture content in lumber. Engineered wood products shall not be placed in any environment that will cause the moisture content of the wood to exceed 19%.
 - Construction loads such as stacking of drywall, plywood, shingles, masonry materials, mechanical equipment, etc. in any one concentrated area on i-joists is strictly prohibited. I-joists are not designed for these types of conditions.

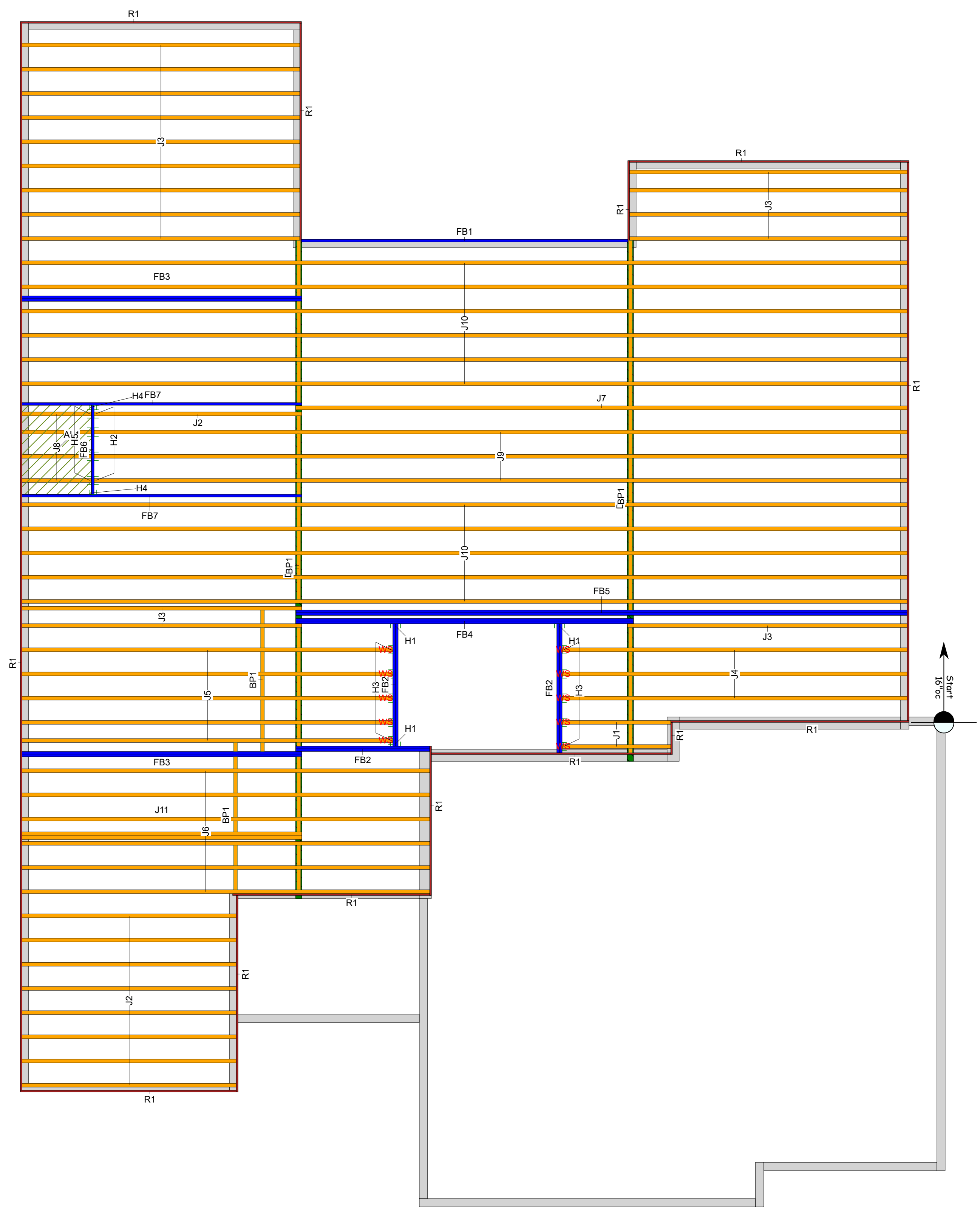
Additional Notes

- THIS PLACEMENT PLAN IS TO BE REVIEWED AND APPROVED BY THE ARCHITECT/ENGINEER OF RECORD PRIOR TO INSTALLATION OF EWP PRODUCTS
- BLUELINX CANT BE LIABLE FOR CHANGES MADE TO THIS PLAN WITHOUT WRITTEN APPROVAL

Layout Scale 1/4" = 1'

Legend

Web Stiffener
Wall
onCENTER Rim Board SE 1.125 X 11.875
BLI 40 9.5
BLI 40 11.875
onCENTER 2.0E LVL 1.75 X 11.875
4 X 4 (Dropped)



Label	Description	Width	Depth	Qty	Plies	Pcs	Length
J8	BLI 40	2.5	9.5			4	4-0-0
J10	BLI 40	2.5	11.875			11	50-0-0
J9	BLI 40	2.5	11.875			3	46-0-0
J7	BLI 40	2.5	11.875			1	34-0-0
J6	BLI 40	2.5	11.875			6	24-0-0
J5	BLI 40	2.5	11.875			5	22-0-0
J4	BLI 40	2.5	11.875			3	20-0-0
J3	BLI 40	2.5	11.875			16	16-0-0
J11	BLI 40	2.5	11.875	1	2	2	16-0-0
J2	BLI 40	2.5	11.875			9	12-0-0
J1	BLI 40	2.5	11.875			2	6-0-0

Label	Description	Width	Depth	Qty	Plies	Pcs	Length
BP1	BLI 40	2.5	11.875			Varies	64-0-0

Label	Description	Width	Depth	Qty	Plies	Pcs	Length
FB5	onCENTER 2.0E LVL	1.75	11.875	1	2	2	34-0-0
FB4	onCENTER 2.0E LVL	1.75	11.875	1	2	2	20-0-0
FB1	onCENTER 2.0E LVL	1.75	11.875			1	18-0-0
FB3	onCENTER 2.0E LVL	1.75	11.875	2	2	4	16-0-0
FB7	onCENTER 2.0E LVL	1.75	11.875			2	16-0-0
FB2	onCENTER 2.0E LVL	1.75	11.875	3	2	6	8-0-0
FB6	onCENTER 2.0E LVL	1.75	11.875			1	6-0-0

Label	Description	Width	Depth	Qty	Plies	Pcs	Length
R1	onCENTER Rim Board SE 1.125 X 11.875	1.125	11.875			18	12-0-0

Label	Pcs	Description	Skew	Slope
H1	3	HHUS410		
H2	4	IUS2.56/11.88 (Min)		
H3	10	HU310		
H4	2	HU11 (Max)		
H5	4	IUS2.56/9.5 (Min)		

Label	Description	Width	Depth	Qty	Plies	Pcs	Length
DB2	[Beam per Blueprint]	4	4			1	38-0-0
DB1	[Beam per Blueprint]	4	4			1	30-0-0

BlueLinX Corporation
1727 Warren St.
North Kansas City, MO. 64116
Phone: (816) 842-3367
VISIT US ON THE WEB AT: <https://bluelinxco.com>

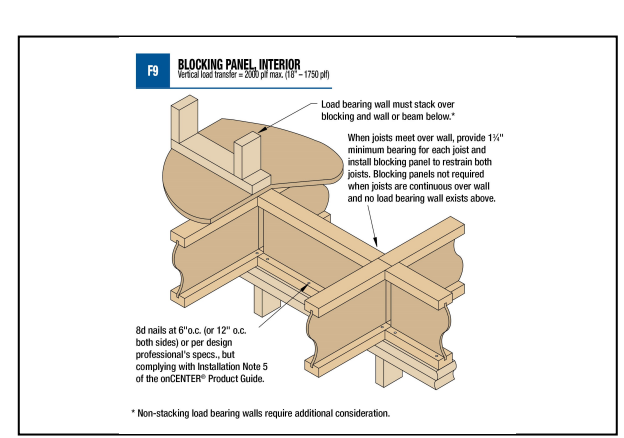
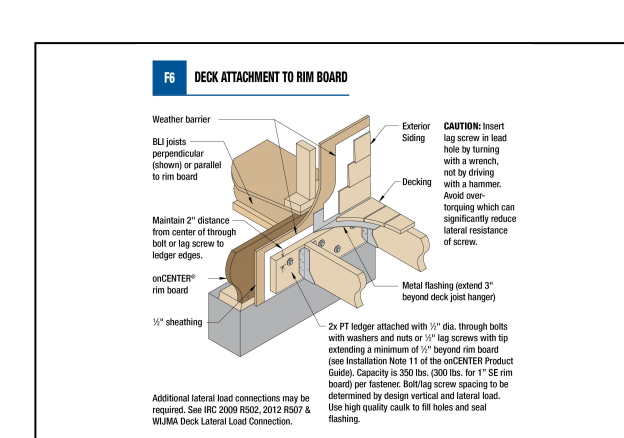
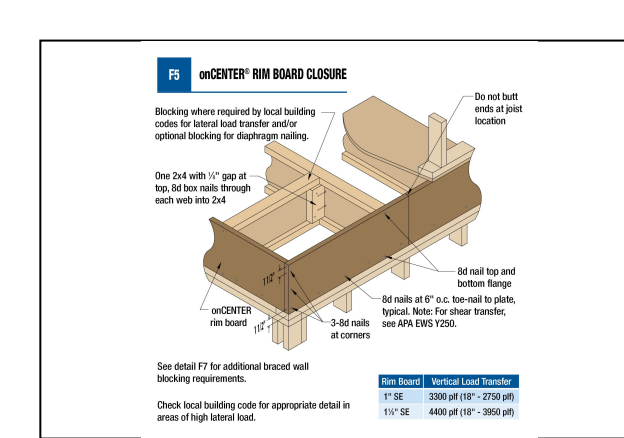
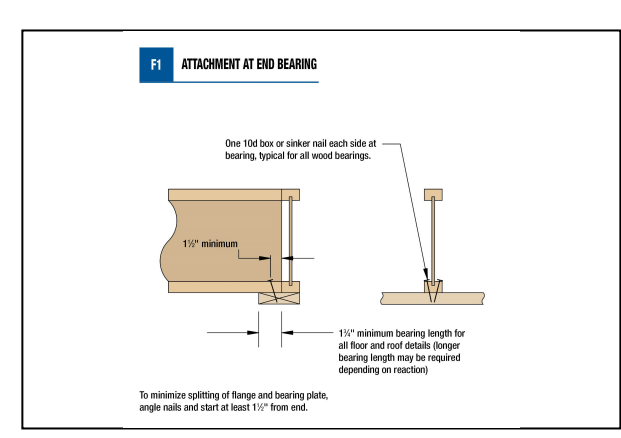
Builder	84 LUMBER
Project	20-13002
Layout Name	20-13002 Bayberry Expanded - Lot 1481
Shipping	Beachner Residence - Winterset Valley - Lee's Summit, MO
Created	December 28, 2020
Revised	December 28, 2020
Designer	Scott Van Cleave

Ground Floor

Design Method ASD (USA)
Building Code IRC 2015

Floor

Live	40
Dead	10
Deflection Joist	480
LL Span L/	240
TL Cant 2L/	360
TL Cant 2L/	360
Deflection Girder	360
LL Span L/	360
TL Span L/	240
LL Cant 2L/	360
TL Cant 2L/	360
Decking	058
Fastener	23/32 APA Rated Stud-I-Floor Nailed & Glued



DOUBLE JOIST CONSTRUCTION WITH FILL

Label	Description	Width	Depth	Qty	Plies	Pcs	Length
DB2	[Beam per Blueprint]	4	4			1	38-0-0
DB1	[Beam per Blueprint]	4	4			1	30-0-0

