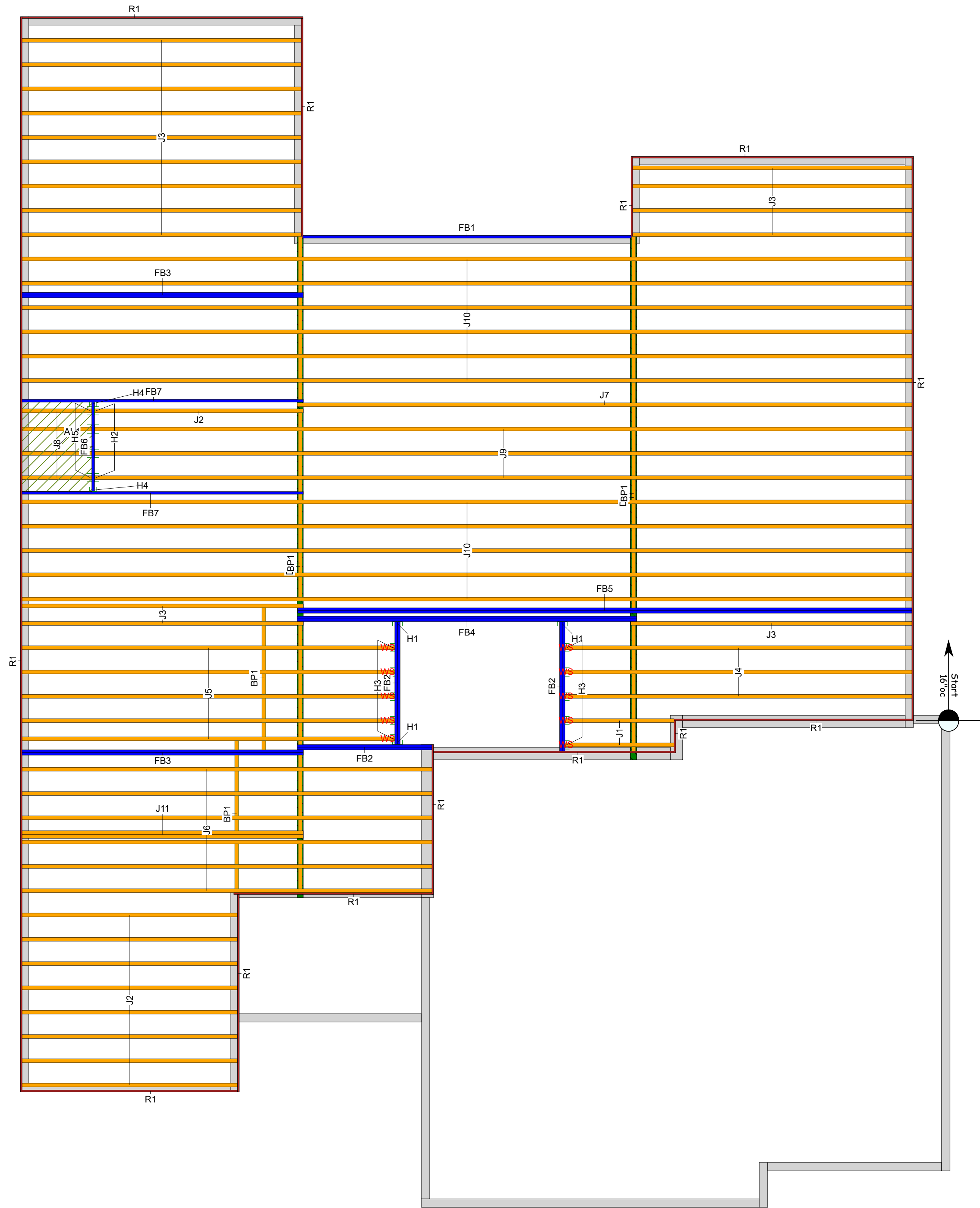


Layout Name
20-13002 Bayberry Expanded - Lot 1481

Ground Floor



- GENERAL NOTES:**
- 1.) See Attached Installation Guide
 - 2.) Care should be taken when setting i-joists to avoid plumbing drops and mechanical chases. (DO NOT CUT OR DRILL THROUGH I-JOISTS FLANGES)
 - 3.) All walls, headers and beams are to be adequately designed and supplied by others to support all loads applied to them
 - 4.) (Dealer) recommends gluing and nailing floor sheathing to i-joists
 - 5.) I-joint spacing is not to exceed spacing shown on placement plan.
 - 6.) All headers are assumed dropped below i-joint framing unless noted otherwise.
 - 7.) Solid blocking down to foundation is to be provided by others at all headers, beams and girder bearing points.
 - 8.) Provisions must be made by others to avoid excessive moisture content in lumber. Engineered wood products shall not be placed in any environment that will cause the moisture content of the wood to exceed 19%.
 - 9.) Construction loads such as stacking of drywall, plywood, shingles, masonry materials, mechanical equipment, etc. in any one concentrated area on i-joists is strictly prohibited. I-joists are not designed for these types of conditions.

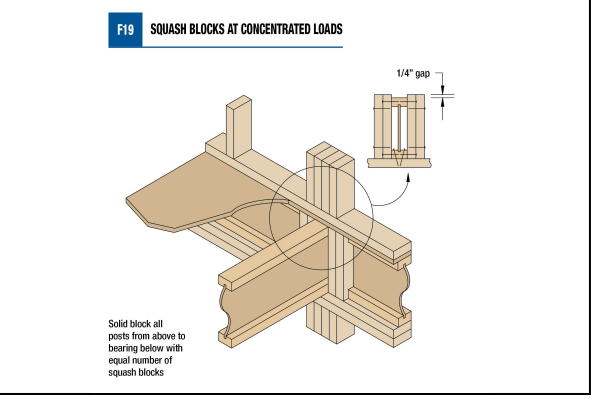
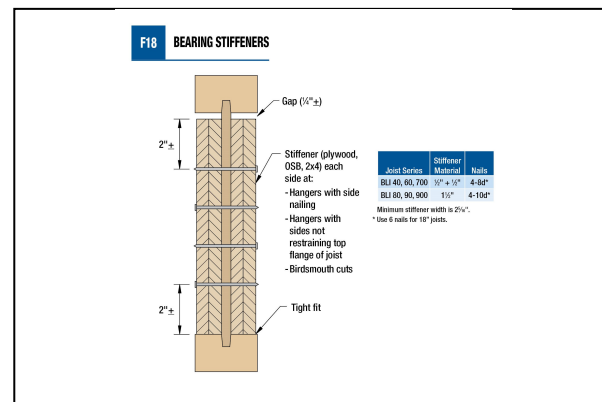
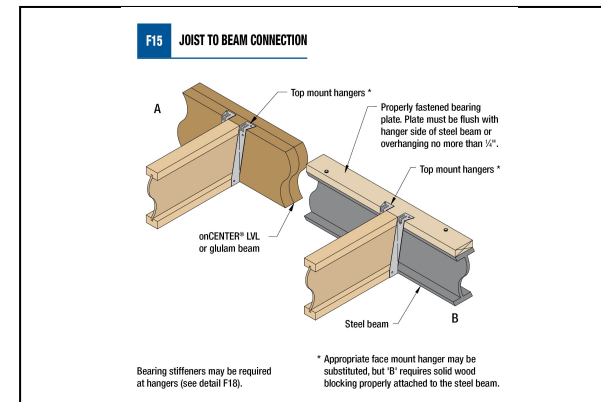
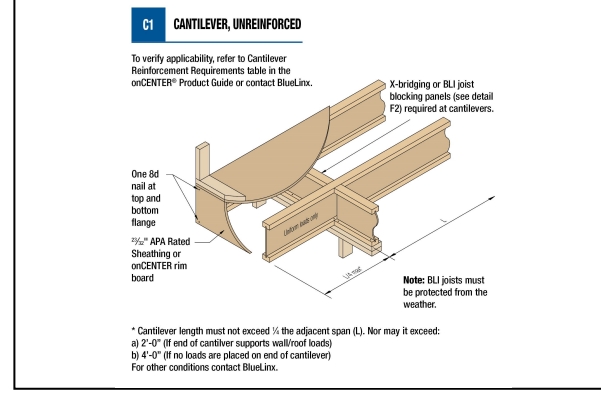
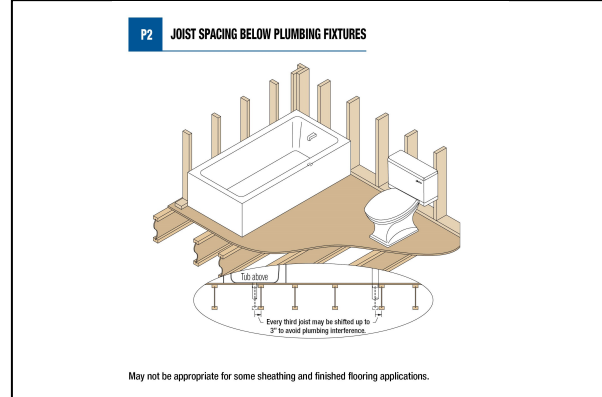
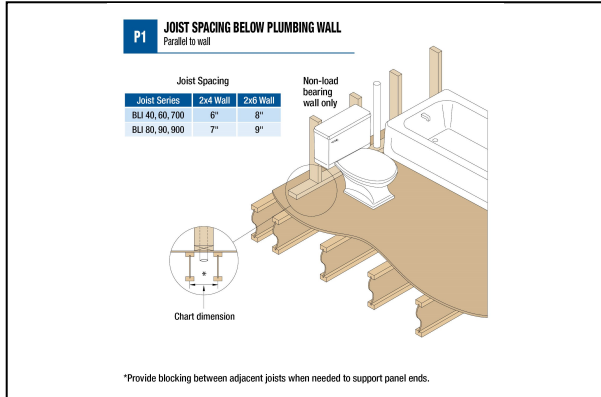
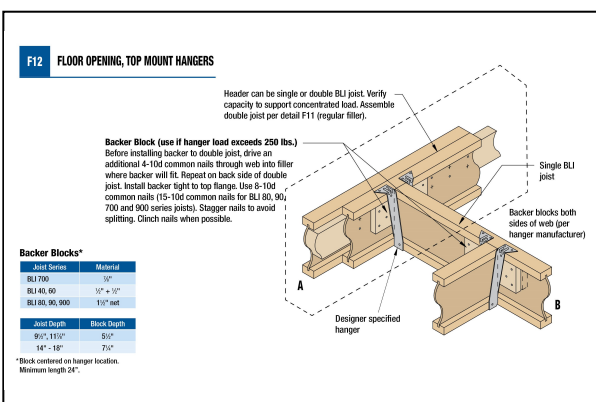
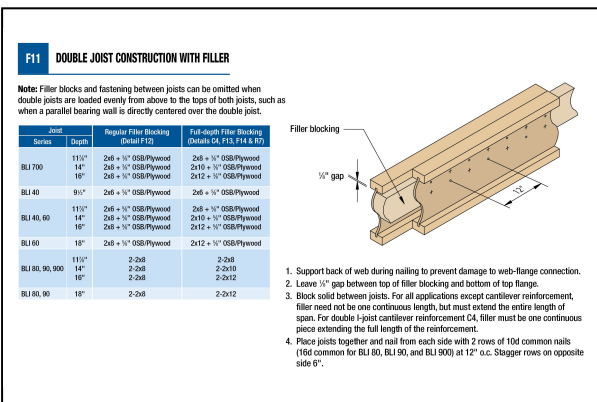
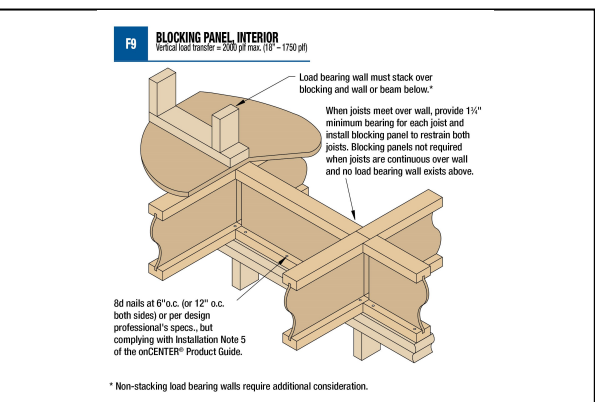
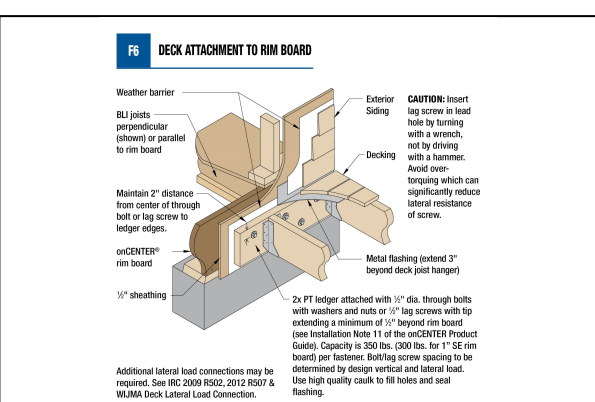
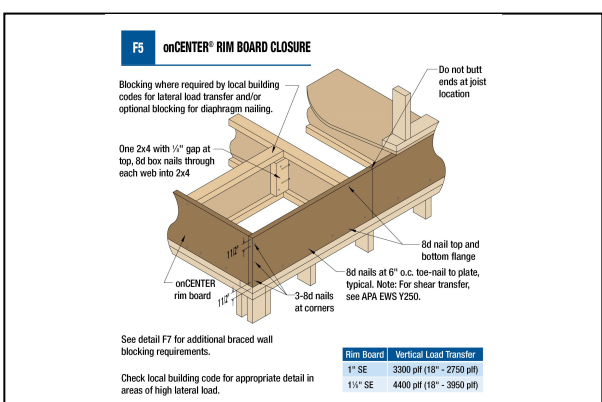
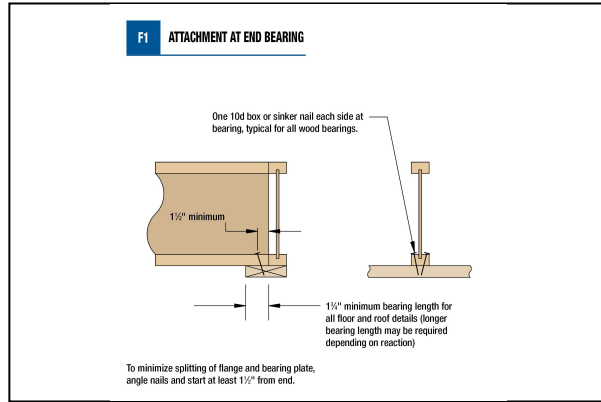
- Additional Notes**
1. THIS PLACEMENT PLAN IS TO BE REVIEWED AND APPROVED BY THE ARCHITECT/ENGINEER OF RECORD PRIOR TO INSTALLATION OF EWP PRODUCTS
 2. BLUELINX CAN'T BE LIABLE FOR CHANGES MADE TO THIS PLAN WITHOUT WRITTEN APPROVAL

Layout Scale 1/4" = 1'

Legend

Web Stiffener	WS
Wall	
onCENTER Rim Board SE 1.125 X 11.875	
BLI 40 9.5	
BLI 40 11.875	
onCENTER 2.0E LVL 1.75 X 11.875	
4 X 4 (Dropped)	

Ground Floor							
I Joist							
Label	Description	Width	Depth	Qty	Plies	Pcs	Length
J8	BLI 40	2.5	9.5			4	4-0-0
J10	BLI 40	2.5	11.875			11	50-0-0
J9	BLI 40	2.5	11.875			3	46-0-0
J7	BLI 40	2.5	11.875			1	34-0-0
J6	BLI 40	2.5	11.875			6	24-0-0
J5	BLI 40	2.5	11.875			5	22-0-0
J4	BLI 40	2.5	11.875			3	20-0-0
J3	BLI 40	2.5	11.875			16	16-0-0
J11	BLI 40	2.5	11.875	1	2	2	16-0-0
J2	BLI 40	2.5	11.875			9	12-0-0
J1	BLI 40	2.5	11.875			2	6-0-0
Blocking							
Label	Description	Width	Depth	Qty	Plies	Pcs	Length
BP1	BLI 40	2.5	11.875	LinFt		Varies	64-0-0
LVL/LSL							
Label	Description	Width	Depth	Qty	Plies	Pcs	Length
FB5	onCENTER 2.0E LVL	1.75	11.875	1	2	2	34-0-0
FB4	onCENTER 2.0E LVL	1.75	11.875	1	2	2	20-0-0
FB1	onCENTER 2.0E LVL	1.75	11.875			1	18-0-0
FB3	onCENTER 2.0E LVL	1.75	11.875	2	2	4	16-0-0
FB7	onCENTER 2.0E LVL	1.75	11.875			2	16-0-0
FB2	onCENTER 2.0E LVL	1.75	11.875	3	2	6	8-0-0
FB6	onCENTER 2.0E LVL	1.75	11.875			1	6-0-0
Rim Board							
Label	Description	Width	Depth	Qty	Plies	Pcs	Length
R1	onCENTER Rim Board SE 1.125 X 11.875	1.125	11.875			18	12-0-0
Hanger							
Label	Pcs	Description	Skew	Slope			
H1	3	HHUS410					
H2	4	IUS2.56/11.88 (Min)					
H3	10	HU310					
H4	2	HU11 (Max)					
H5	4	IUS2.56/9.5 (Min)					
Beam By Others							
Label	Description	Width	Depth	Qty	Plies	Pcs	Length
DB2	[Beam per Blueprint]	4	4			1	38-0-0
DB1	[Beam per Blueprint]	4	4			1	30-0-0



BlueLinx Corporation

1727 Warren St.
North Kansas City, MO. 64116
Phone: (816) 842-3367

VISIT US ON THE WEB AT: <https://bluelinxco.com>

Project
20-13002

Builder
84 LUMBER

Layout Name
20-13002 Bayberry Expanded - Lot 1481

Shipping
Beachner Residence - Winterset Valley - Lee's Summit, MO

Created
December 28, 2020

Revised
December 28, 2020

Designer
Scott Van Cleave

Ground Floor

Design Method ASD (USA)
Building Code IBC/IRC 2015

Floor

Loads	40
Live	10
Dead	
Deflection Joist	
LL Span L/	480
TL Span L/	240
TL Cant 2L/	360
TL Cant 2L/	360
Deflection Girder	
LL Span L/	360
TL Span L/	240
LL Cant 2L/	360
LL Cant 2L/	360
Decking	
Decking	

Fastener
23/32 APA Rated Studs - Floor
Nailed & Glued

SHEET
1 OF 1