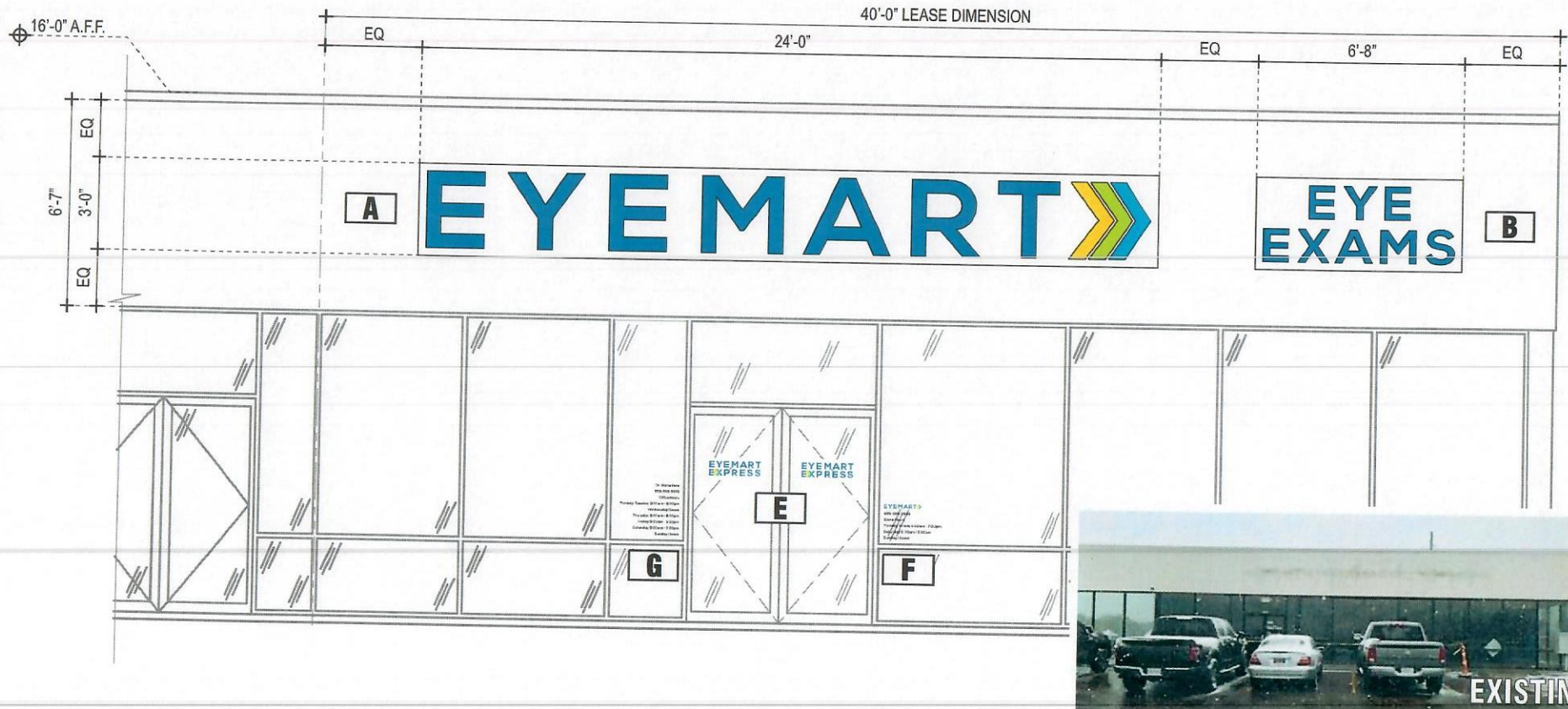


STOREFRONT ELEVATION - RTE 291

SCALE: 1/4" = 1'-0"



TRIANGLE
SIGN SERVICES

CLIENT & LOCATION

EYEMART

WALMART SUPERCENTER
1041 NE SAM WALTON LANE
LEE'S SUMMIT, MO 64086

LEAD NO.
195389 R1

DATE
11/9/2020

REVIEWED BY

REVISION

SHEET NO.

SALESMAN
S. ALTSHULER

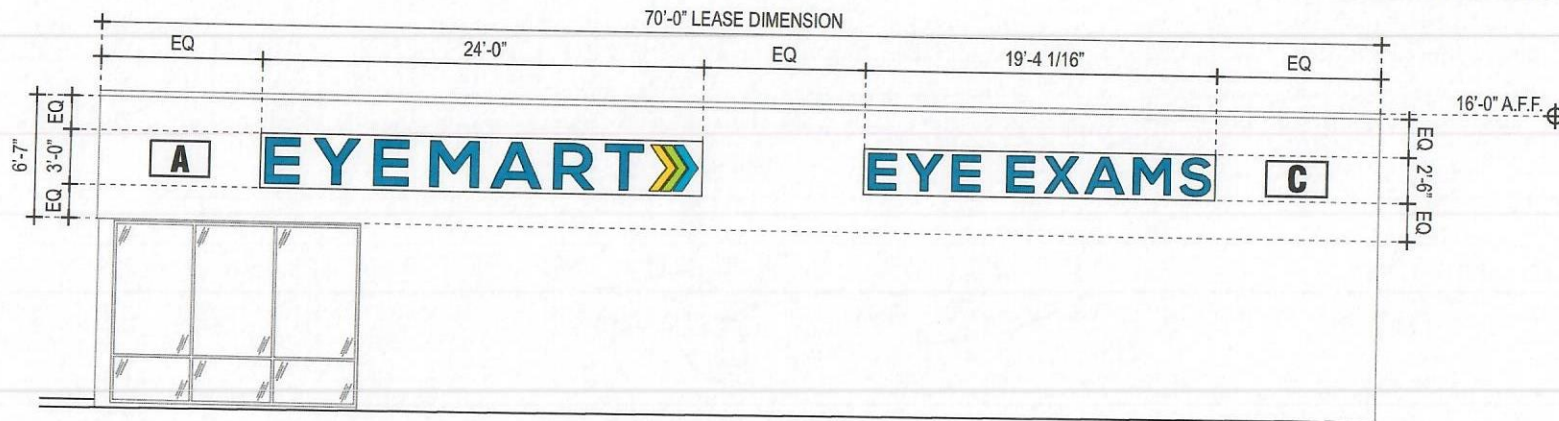
DRAWN BY
MAF

SEG. NO.

2 of 34

SIDE ELEVATION - NE TUDOR ROAD

SCALE: 1/8" = 1'-0"



TRIANGLE
SIGN SERVICES

CLIENT & LOCATION

EYEMART

WALMART SUPERCENTER
1041 NE SAM WALTON LANE
LEE'S SUMMIT, MO 64086

LEAD NO.
195389 R1

DATE
11/9/2020

REVIEWED BY

REVISION

SHEET NO.

SALESMAN
S. ALTSHULER

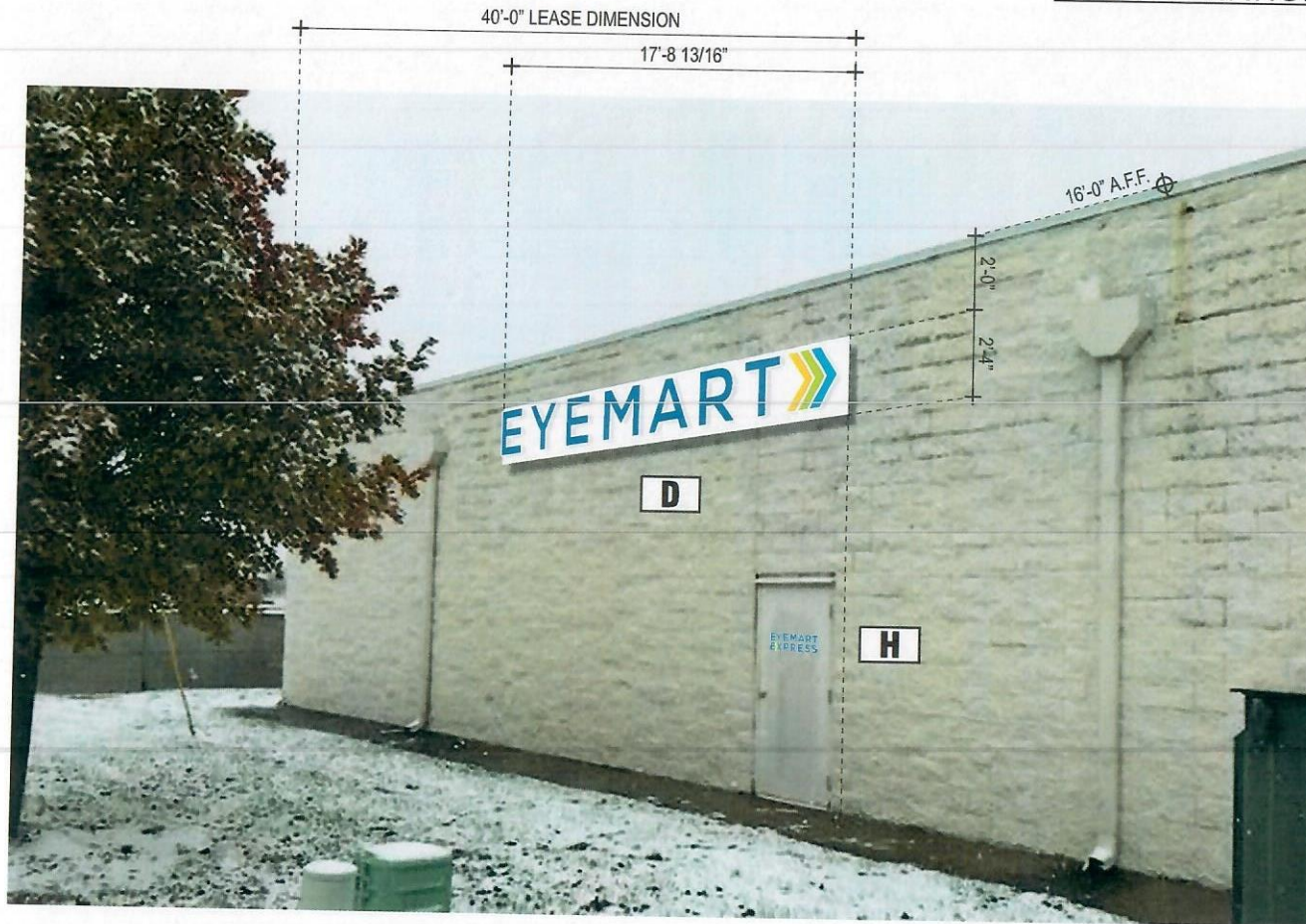
DRAWN BY
MAF

SEG. NO.

3 of 34

REAR ELEVATION - FACING WALMART SUPERCENTER

SCALE: N.T.S.



TRIANGLE
SIGN SERVICES

CLIENT & LOCATION

EYEMART

WALMART SUPERCENTER
1041 NE SAM WALTON LANE
LEE'S SUMMIT, MO 64086

LEAD NO.
195389 R1

DATE
11/9/2020

REVIEWED BY

REVISION

SALESMAN
S. ALTSHULER

DRAWN BY
MAF

SEG. NO.

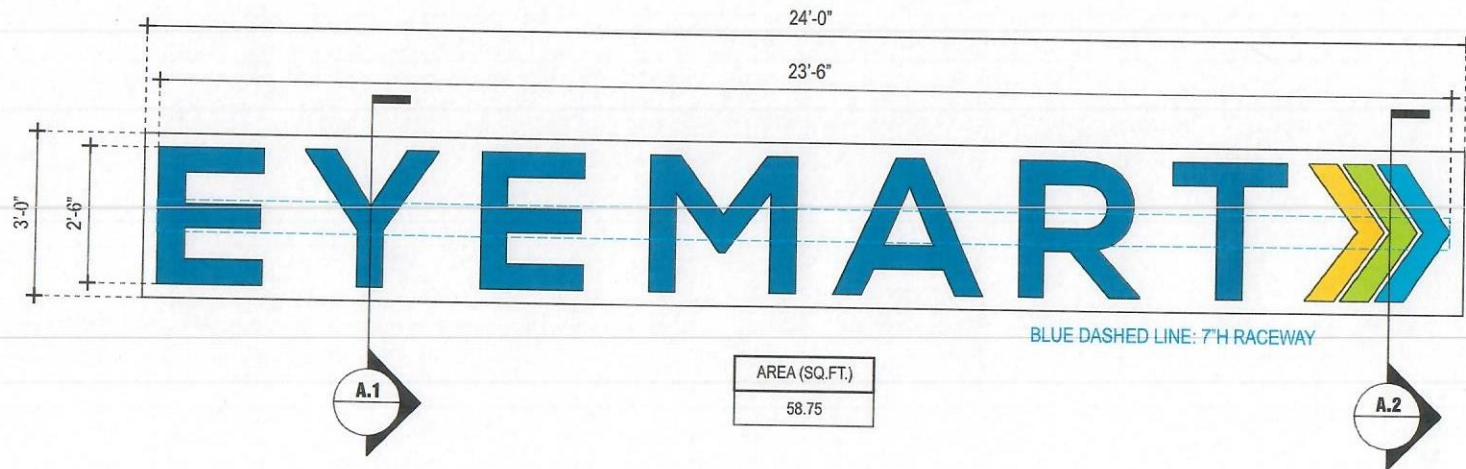
SHEET NO.

4 of 34

A**INTERNALLY ILLUMINATED FACE-LIT CHANNEL LETTERS W/ BACKGROUND PANEL ON RACEWAY**

SCALE: 3/8" = 1'-0"

QTY.: TWO (2)



WHITE

PMS 115U

PMS 381U

PMS 312U

PMS 2935U

TRIANGLE
SIGN SERVICES

CLIENT & LOCATION

EYEMARTWALMART SUPERCENTER
1041 NE SAM WALTON LANE
LEE'S SUMMIT, MO 64086LEAD NO.
195389 R1DATE
11/9/2020

REVIEWED BY

REVISION

SALESMAN
S. ALTSHULERDRAWN BY
MAF

SEG. NO.

SHEET NO.

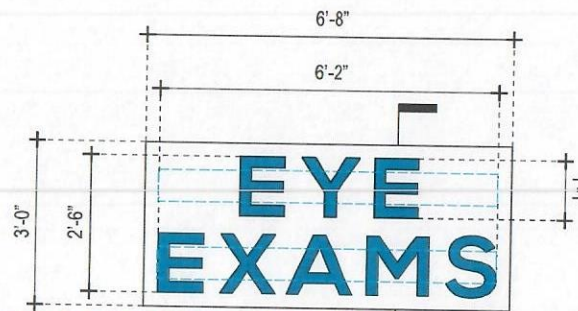
5 of 34

B

INTERNALLY ILLUMINATED FACE-LIT CHANNEL LETTERS W/ BACKGROUND PANEL ON RACEWAY

SCALE: 3/8" = 1'-0"

QTY.: ONE (1)



BLUE DASHED LINE: 7"H RACEWAYS (TOP ACCESS FOR TOP RACEWAY/BOTTOM ACCESS FOR BOTTOM RACEWAY)

AREA (SQ.FT.)
15.42



WHITE

PMS 2935U

TRIANGLE
SIGN SERVICES

CLIENT & LOCATION

EYEMART

WALMART SUPERCENTER
1041 NE SAM WALTON LANE
LEE'S SUMMIT, MO 64086

LEAD NO.
195389 R1

DATE
11/9/2020

REVIEWED BY

REVISION

SALESMAN
S. ALTSHULER

DRAWN BY
MAF

SEG. NO.

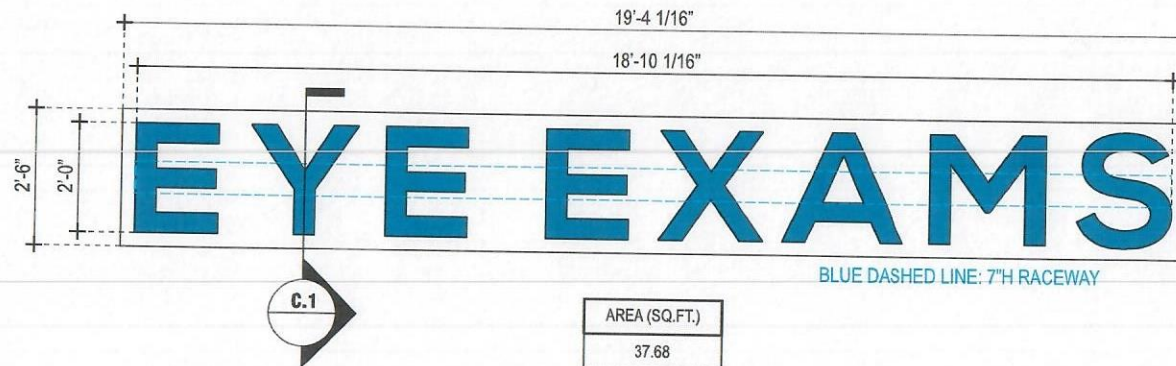
SHEET NO.

6 of 34

C**INTERNALLY ILLUMINATED FACE-LIT CHANNEL LETTERS W/ BACKGROUND PANEL ON RACEWAY**

SCALE: 3/8" = 1'-0"

QTY.: ONE (1)



WHITE

PMS 2935U

TRIANGLE
SIGN SERVICES

CLIENT & LOCATION

EYEMARTWALMART SUPERCENTER
1041 NE SAM WALTON LANE
LEE'S SUMMIT, MO 64086LEAD NO.
195389 R1DATE
11/9/2020

REVIEWED BY

REVISION

SALESMAN
S. ALTSHULERDRAWN BY
MAF

SEG. NO.

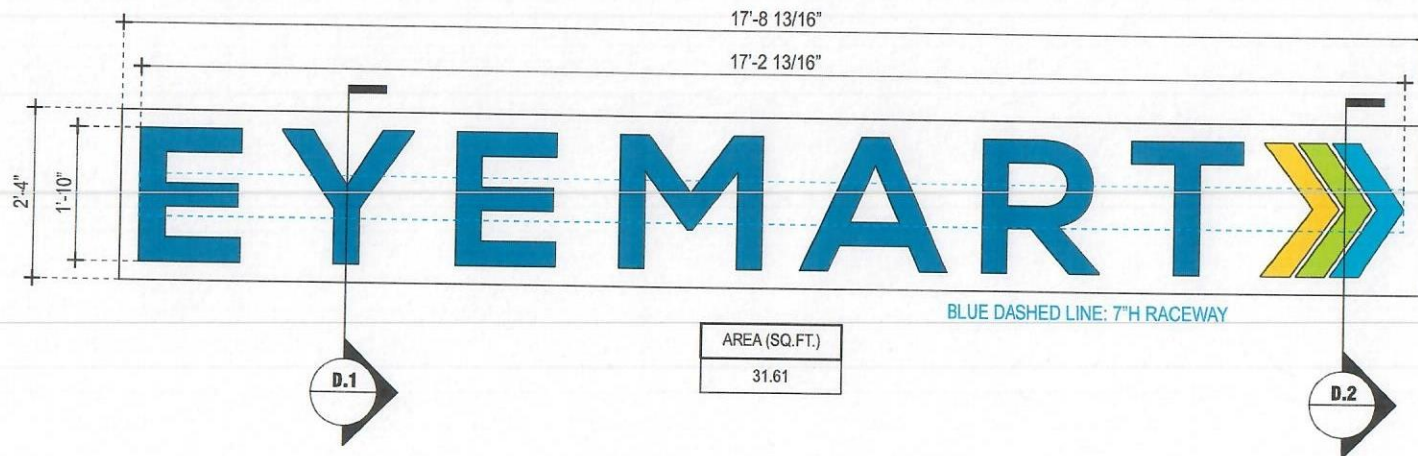
SHEET NO.

7 of 34

D**INTERNALLY ILLUMINATED FACE-LIT CHANNEL LETTERS W/ BACKGROUND PANEL ON RACEWAY**

SCALE: 1/2" = 1'-0"

QTY.: ONE (1)



WHITE

PMS 115U

PMS 381U

PMS 312U

PMS 2935U

TRIANGLE
SIGN SERVICES

CLIENT & LOCATION

EYEMARTWALMART SUPERCENTER
1041 NE SAM WALTON LANE
LEE'S SUMMIT, MO 64086LEAD NO.
195389 R1DATE
11/9/2020

REVIEWED BY

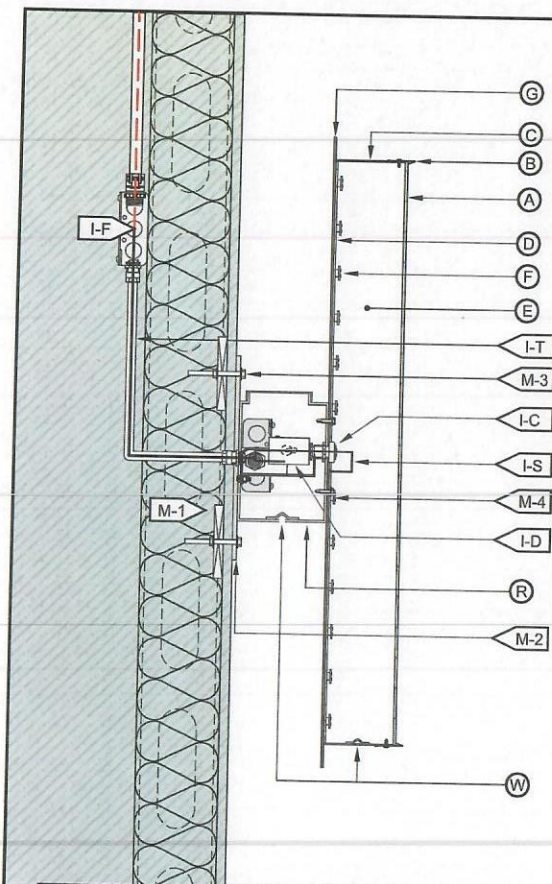
REVISION

SALESMAN
S. ALTSCHULERDRAWN BY
MAF

SEG. NO.

SHEET NO.

8 of 34



FACE-LIT CHANNEL LETTERS / LED ILLUMINATION / EXTERIOR INSTALL / RACEWAY MOUNTED / BG PANEL

A.1 B.1 C.1 D.1

SCALE: N.T.S.

(A) FACE	
MATERIAL:	3/16" WHITE PLEX #2447.
VINYL:	3M PERFORATED DAY/NIGHT EFFECT; 1ST SURFACE
COLOR:	PAINT TO MATCH PMS 2935U
(B) TRIMCAP	
SIZE / FINISH	1" / MATCH RETURNS.
(C) RETURN	
DEPTH:	5".
MATERIAL:	0.040" ALUM.
COLOR/ FINISH:	WHITE/ SATIN.
(D) BACK	
MATERIAL:	3MM ACM.
COLOR/ FINISH:	WHITE/ SATIN.
(E) INSIDE OF CAN	
COLOR:	PRE-COAT WHITE.
(F) ILLUMINATION	
TYPE/COLOR:	LEDS/6500K WHITE
(G) BG PANEL	
MATERIAL:	1/8" ALUMINUM
COLOR/FINISH:	WHITE/SATIN
	WHITE
	PMS 2935U

(I) WIRING	
I-C:	BUSHING.
I-D:	DISCONNECT SWITCH @ SIDE OF RACEWAY.
I-F:	SEE ELEC. NOTE. 120V PRIMARY IN J-BOX BY OTHERS.
I-T:	14awg FEED IN 1/2"Ø SEAL-TITE w/ 1/2" CONNECTORS.
I-J:	STANDARD JUNCTION BOX.
I-H:	W.P. BOX @ DISCONNECT SWITCH.
I-P:	LIQUID TIGHT CONNECTOR.
I-S:	U.L. APPROVED CLASS II LOW VOLTAGE WIRE.
	(ALL CONNECTIONS TO BE IN WATERPROOF BOXES).
(J) POWER SUPPLY	
TYPE:	LED POWER SUPPLY HOUSE IN RACEWAY.
VOLTAGE:	120V.
(R) RACEWAY	
MATERIAL:	7" x 4" ALUM. LED EXTRUSION RACEWAY, TOP ACCESS.
COLOR/ FINISH:	PAINT TO MATCH EXISTING FASCIA FINISH.
(M) MOUNTING	
M-1:	SEE MOUNTING NOTE. REQ'D. BLOCKING BY OTHERS.
M-2:	MOUNTING BARS 2"W. x 1/4" ALUM. w/ 3/4"Ø MNTG. HOLE.
M-3:	3/8"Ø ALLTHREAD, NUT & WASHERS INTO BLOCKING BEYOND.
M-4:	SELF-TAPPING SCREW.
(W) WEEP HOLE	
TYPE:	1/4"Ø w/ COVERS.

**120V
INSTALL**

1. CUSTOMER G.C. TO PROVIDE ADEQUATE WOOD OR MTL. BLOCKING IN CORRELATION W/ FACADE FRAMING AS REQUIRED.
2. INSTALLER IS TO V.I.F. & PROVIDE THE PROPER NON-CORROSIVE MOUNTING HARDWARE TO ENSURE SAFE INSTALLATION.
3. ALL EXTERIOR FACADE PENETRATIONS TO BE WATERTIGHT.
4. INSTALLATION TO MEET CURRENT N.E.C., U.L. & LOCAL CODES. LOCATION OF THE DISCONNECT SWITCH AFTER INSTALLATION SHALL COMPLY WITH ARTICLE 600.6(A) (1) OF THE NATION ELECTRICAL CODE

ELECTRICAL

1. ALL ELECTRICAL COMPONENTS TO BE U.L. APPROVED.
2. CUSTOMER IS RESPONSIBLE FOR ONE (1) 120w/ 20a DEDICATED CIRCUIT w/ GROUND PER SIGN TO WITHIN 6' OF SIGN.
3. THIS SIGN IS INTENDED TO BE INSTALLED IN ACCORDING W/ THE REQUIREMENTS OF ARTICLE 600 OF THE NATIONAL ELECTRICAL CODE AND/OR OTHER APPLICABLE LOCAL CODES. THIS INCLUDES PROPER GROUNDING & BONDING OF THE SIGN.

FABRICATOR

1. PLACEMENT OF LIGHTING ELEMENTS FOR OPTIMUM ILLUMINATION OF SIGN TO BE DETERMINED IN PRODUCTION.
2. MANUFACTURER & U.L. LABELS TO BE APPLIED & VISIBLE FROM THE GROUND. LOCATED ON THE LAST CHANNEL LETTER OR END OF THE SIGN BOX/FREESTANDING SIGN



**ALL ELECTRICAL
COMPONENTS ARE
TO BE UL APPROVED**

**TRIANGLE
SIGN SERVICES**

CLIENT & LOCATION

EYEMART

WALMART SUPERCENTER
1041 NE SAM WALTON LANE
LEE'S SUMMIT, MO 64086

LEAD NO.

195389 R1

DATE

11/9/2020

REVIEWED BY

REVISION

SALESMAN

S. ALTSHULER

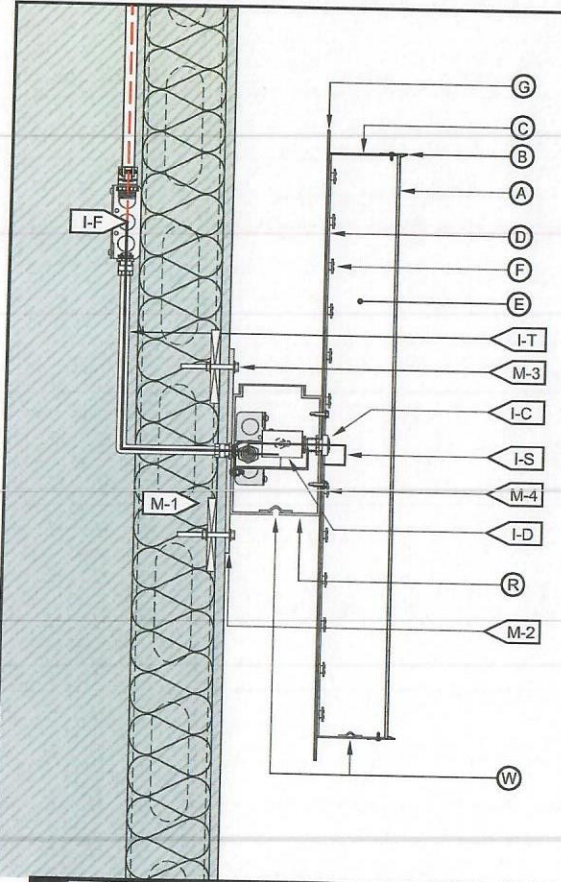
DRAWN BY

MAF

SEG. NO.

SHEET NO.

9 of 34



"LOGO" FACE-LIT CHANNEL LETTER / LED ILLUMINATION / EXTERIOR INSTALL / RACEWAY MOUNTED / BG PANEL

A.2 D.2

SCALE: N.T.S.

(A) FACE	
MATERIAL:	3/16" WHITE PLEX #2447.
VINYL:	TRANSLUCENT
COLOR:	PRINT TO MATCH PMS 2935U, 115U, 312U & 381U
(B) TRIMCAP	
SIZE / FINISH	1" / MATCH RETURNS.
(C) RETURN	
DEPTH:	5".
MATERIAL:	0.040" ALUM.
COLOR/ FINISH:	WHITE/ SATIN.
(D) BACK	
MATERIAL:	3MM ACM.
COLOR/ FINISH:	WHITE/ SATIN.
(E) INSIDE OF CAN	
COLOR:	PRE-COAT WHITE.
(F) ILLUMINATION	
TYPE/COLOR:	LEDS/6500K WHITE
(G) BG PANEL	
MATERIAL:	1/8" ALUMINUM
COLOR/FINISH:	WHITE/SATIN
WHITE	
PMS 115U	
PMS 381U	
PMS 312U	
PMS 2935U	

(I) WIRING	
I-C:	BUSHING.
I-D:	DISCONNECT SWITCH @ SIDE OF RACEWAY.
I-F:	SEE ELEC. NOTE. 120V PRIMARY IN J-BOX BY OTHERS.
I-T:	14awg FEED IN 1/2"Ø SEAL-TITE w/ 1/2" CONNECTORS.
I-J:	STANDARD JUNCTION BOX.
I-H:	W.P. BOX @ DISCONNECT SWITCH.
I-P:	LIQUID TIGHT CONNECTOR.
I-S:	U.L. APPROVED CLASS II LOW VOLTAGE WIRE.
(ALL CONNECTIONS TO BE IN WATERPROOF BOXES).	
(J) POWER SUPPLY	
TYPE:	LED POWER SUPPLY HOUSE IN RACEWAY.
VOLTAGE:	120V.
(R) RACEWAY	
MATERIAL:	7" x 4" ALUMINUM EXTRUSION, TOP ACCESS.
COLOR/ FINISH:	MATCH FASCIA.
(M) MOUNTING	
M-1:	SEE MOUNTING NOTE. REQ'D. BLOCKING BY OTHERS.
M-2:	MOUNTING BARS 2"W. x 1/4" ALUM. w/ 3/4"Ø MNTG. HOLE.
M-3:	3/8"Ø ALLTHREAD, NUT & WASHERS INTO BLOCKING BEYOND.
M-4:	SELF-TAPPING SCREW.
(W) WEEP HOLE	
TYPE:	1/4"Ø w/ COVERS.

120V INSTALL

1. CUSTOMER G.C. TO PROVIDE ADEQUATE WOOD OR MTL. BLOCKING IN CORRELATION W/ FACADE FRAMING AS REQUIRED.
2. INSTALLER IS TO V.I.F. & PROVIDE THE PROPER NON-CORROSIVE MOUNTING HARDWARE TO ENSURE SAFE INSTALLATION.
3. ALL EXTERIOR FACADE PENETRATIONS TO BE WATERTIGHT.
4. INSTALLATION TO MEET CURRENT N.E.C., U.L. & LOCAL CODES. LOCATION OF THE DISCONNECT SWITCH AFTER INSTALLATION SHALL COMPLY WITH ARTICLE 600.6(A) (1) OF THE NATION ELECTRICAL CODE

ELECTRICAL

1. ALL ELECTRICAL COMPONENTS TO BE U.L. APPROVED.
2. CUSTOMER IS RESPONSIBLE FOR ONE (1) 120v/ 20a DEDICATED CIRCUIT w/ GROUND PER SIGN TO WITHIN 6' OF SIGN.
3. THIS SIGN IS INTENDED TO BE INSTALLED IN ACCORDING W/ THE REQUIREMENTS OF ARTICLE 600 OF THE NATIONAL ELECTRICAL CODE AND/OR OTHER APPLICABLE LOCAL CODES. THIS INCLUDES PROPER GROUNDING & BONDING OF THE SIGN.

FABRICATOR

1. PLACEMENT OF LIGHTING ELEMENTS FOR OPTIMUM ILLUMINATION OF SIGN TO BE DETERMINED IN PRODUCTION.
2. MANUFACTURER & U.L. LABELS TO BE APPLIED & VISIBLE FROM THE GROUND. LOCATED ON THE LAST CHANNEL LETTER OR END OF THE SIGN BOX/FREESTANDING SIGN

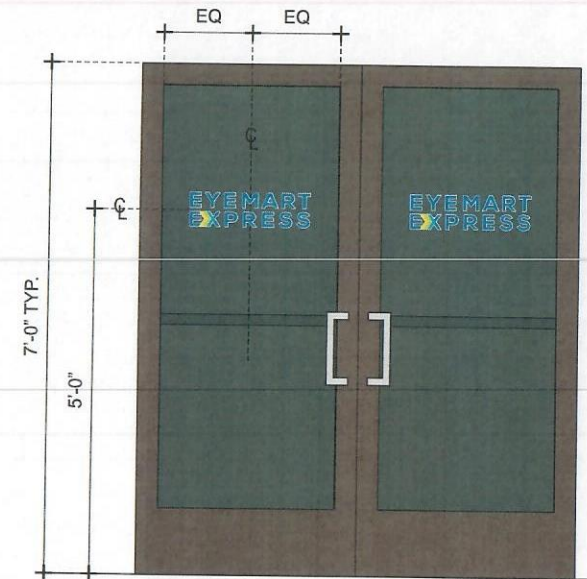
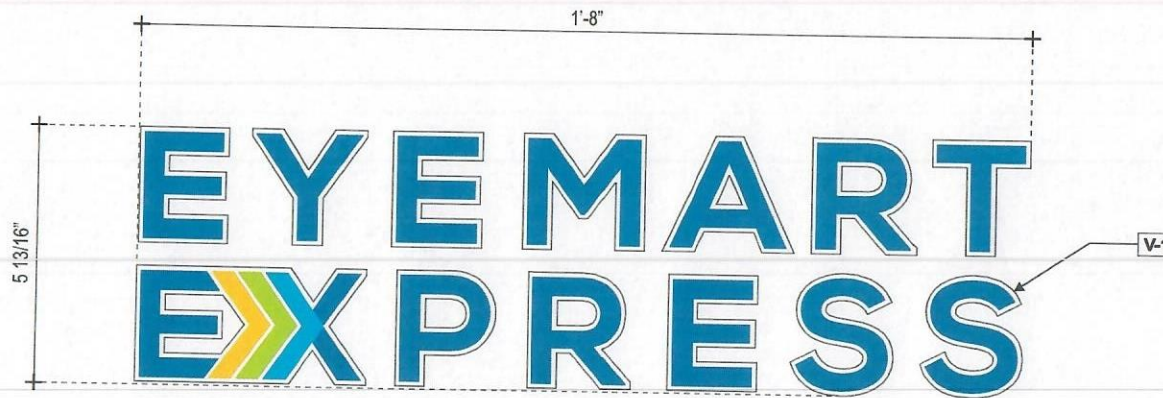
ALL ELECTRICAL COMPONENTS ARE TO BE UL APPROVED

E**VINYL DOOR GRAPHICS**

SCALE: N.T.S.

QTY.: TWO (2)

AREA: 5.813' x 20" = 0.81' ±

TYP. DOOR ELEVATION
SCALE: 1/2" = 1'-0"

✓	VINYL MATRIX	
V-1	VINYL	CALON #02 'HIGH PERFORMANCE WHITE'
	FINISH	OPAQUE W/ DIGITAL PRINTING
	APPLIED	1ST SURFACE ON ENTRANCE DOOR

TRIANGLE
SIGN SERVICES

CLIENT & LOCATION

EYEMARTWALMART SUPERCENTER
1041 NE SAM WALTON LANE
LEE'S SUMMIT, MO 64086LEAD NO.
195389 R1DATE
11/9/2020

REVIEWED BY

REVISION

SHEET NO.

SALESMAN
S. ALTSHULERDRAWN BY
MAF

SEG. NO.

11 of 34

F

VINYL STORE HOURS

SCALE: 3" = 1'-0"

QTY.: ONE (1)



①	VINYL MATRIX	
V-1	VINYL	CALON #02 'HIGH PERFORMANCE WHITE'
	FINISH	OPAQUE
	APPLIED	1ST SURFACE ON WINDOW
		FONT: NEXA BOLD
	NOTE:	DIGITAL PRINT FOR LOGO



TRIANGLE
SIGN SERVICES

CLIENT & LOCATION

EYEMART

WALMART SUPERCENTER
1041 NE SAM WALTON LANE
LEE'S SUMMIT, MO 64086

LEAD NO.
195389 R1

DATE
11/9/2020

REVIEWED BY

REVISION

SHEET NO.

SALESMAN
S. ALTSHULER

DRAWN BY
MAF

SEG. NO.

12 of 34

G**VINYL OFFICE HOURS**

SCALE: 3" = 1'-0"

QTY.: ONE (1)

1'-11 7/16"

2"

Dr. Name Here

1" 555-555-5555

Office Hours

Monday-Tuesday 9:00am - 6:00pm

Wednesday Closed

V-1 Thursday 9:00am - 6:00pm

Friday 9:00am - 5:00pm

Saturday 9:00am - 3:00pm

Sunday Closed

1'-8"

2"

V	VINYL MATRIX	
V-1	VINYL	CALON #02 'HIGH PERFORMANCE WHITE'
	FINISH	OPAQUE
	APPLIED	1ST SURFACE ON WINDOW
FONT: NEXA BOLD		

WHITE

TRIANGLE
 SIGN SERVICES

CLIENT & LOCATION

EYEMART

 WALMART SUPERCENTER
 1041 NE SAM WALTON LANE
 LEE'S SUMMIT, MO 64086

 LEAD NO.
 195389 R1

 DATE
 11/9/2020

REVIEWED BY

REVISION

 SALESMAN
 S. ALTSHULER

 DRAWN BY
 MAF

SEG. NO.

SHEET NO.

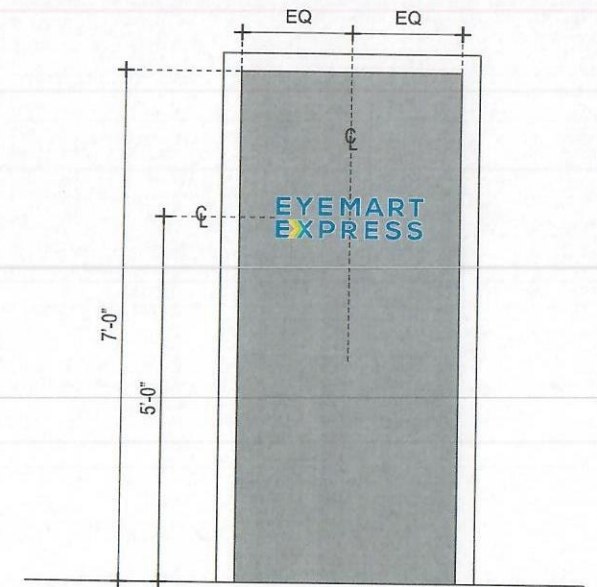
13 of 34

H

VINYL DOOR GRAPHICS (REAR/SERVICE DOOR)

SCALE: 3" = 1'-0"

QTY.: ONE (1)

AREA: 7.063' x 24.25' = 1.19' ∇ 

TYP. REAR DOOR ELEVATION

SCALE: 1/2" = 1'-0"



①	VINYL MATRIX	
V-1	VINYL	CALON #02 'HIGH PERFORMANCE WHITE'
	FINISH	OPAQUE W/ DIGITAL PRINTING
	APPLIED	1ST SURFACE ON REAR/SERVICE DOOR

TRIANGLE
SIGN SERVICES

CLIENT & LOCATION

EYEMART

WALMART SUPERCENTER
1041 NE SAM WALTON LANE
LEE'S SUMMIT, MO 64086

LEAD NO.
195389 R1

DATE
11/9/2020

REVIEWED BY

REVISION

SALESMAN
S. ALTSHULER

DRAWN BY
MAF

SEG. NO.

SHEET NO.

14 of 34