



Total Sq. Ft.: 88.2

Manufacture and Install 1 Set Channel Letters:

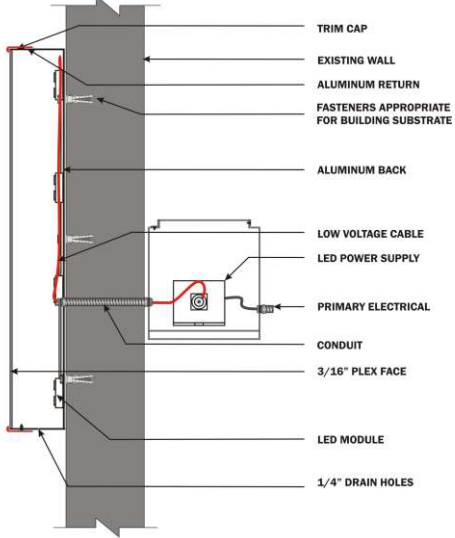
JOHNSON

- 5" Deep Fabricated .040 Aluminum Letter Returns Painted Black
- Interiors Painted Light Enhancement White
- 1" Jewelite Dark Red Trim Cap Retainer (painted to match face)
- White LED
- 3/16" Thick White Acrylic Face with vinyl to match PMS 187C (Gerber Cardinal Red 230-53)
- 1/4" Weep Holes
- Mount to building facade as illustrated.

FITNESS & WELLNESS STORE

- 5" Deep Fabricated .040 Aluminum Contour Channel Returns Painted Black
- Interiors Painted Light Enhancement White
- 1" Jewelite Black Trim Cap Retainer
- White LED
- 3/16" Thick White Acrylic Face with dark grey vinyl graphics
- 1/4" Weep Holes
- Mount to building facade as illustrated.

CONSTRUCTION PROFILE



ELECTRICAL NOTES

View Sign DOES NOT provide primary electrical to sign.
Power to the sign must be done by a licensed electrical contractor or licensed electrician.
Each sign must have:

1. A minimum of one dedicated 120V 20A circuit
2. Junction box installed within 6 feet of sign
3. Three wires: Line, Ground, Neutral



View Sign & Light

14515 W 101st Terrace
Lenexa, KS 66215

913.529.2010

Client:

JOHNSON®
FITNESS & WELLNESS STORE

Location:

1712 NW Chipman Road
Lee's Summit, MO 64081

Last Revision: 11/23/2020

Drawing #: Johnson Fitness Lees Summit 111420

.....
Client Approval

.....
Landlord Approval

Sales Rep:

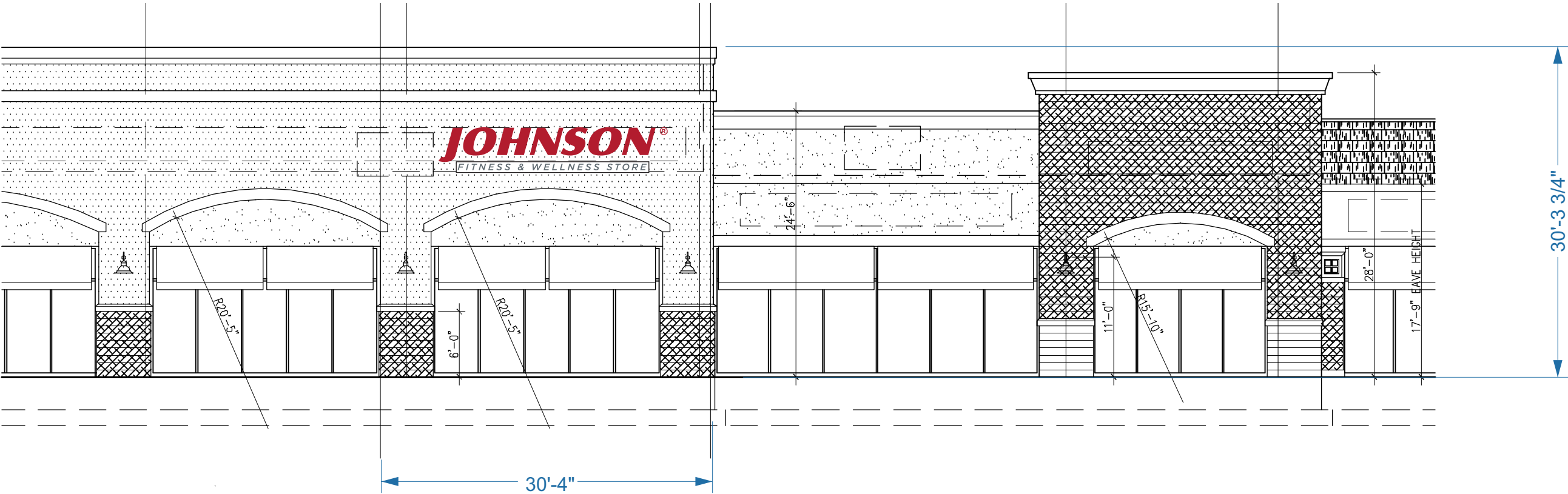
DV




Designer:

GG



Building Frontage: 917 Sq. Ft.
Overall Sign Height: 4'-2"
Overall Sign Width: 21'-0"
Total Sq. Ft.: 88.2 (9.9%, 10% allowed)



 <p>View Sign & Light 14515 W 101st Terrace Lenexa, KS 66215 913.529.2010</p>	<p>Client: JOHNSON FITNESS & WELLNESS STORE</p> <p>Location: 1712 NW Chipman Road Lee's Summit, MO 64081</p>	<p>Last Revision: 11/23/2020</p> <p>Drawing #: Johnson Fitness Lees Summit 111420</p>	<p>• ----- Client Approval</p> <p>• ----- Landlord Approval</p>	<p>Sales Rep: DV</p> <p>Designer: GG</p> <div></div>
---	---	---	---	--