

# LEE'S SUMMIT SURGICAL Ambulatory Surgery Facility 2801 NE Independence Avenue Lee's Summit, MO 64064



## PROJECT TEAM

### ARCHITECT ACI BOLAND, INC.

1710 WYANDOTTE STREET  
KANSAS CITY, MO 64108  
PHONE 816.763.9600

### MEP ENGINEER G&W Engineering Corporation

138 WELDON PARKWAY  
MARYLAND HEIGHTS, MO 63043  
PHONE 314.737.4200

### INTERIOR CONSULTANT Benson Method, LLC

5750 WEST 95th STREET, SUITE 230  
OVERLAND PARK, KANSAS 66207  
PHONE 913.221.0930

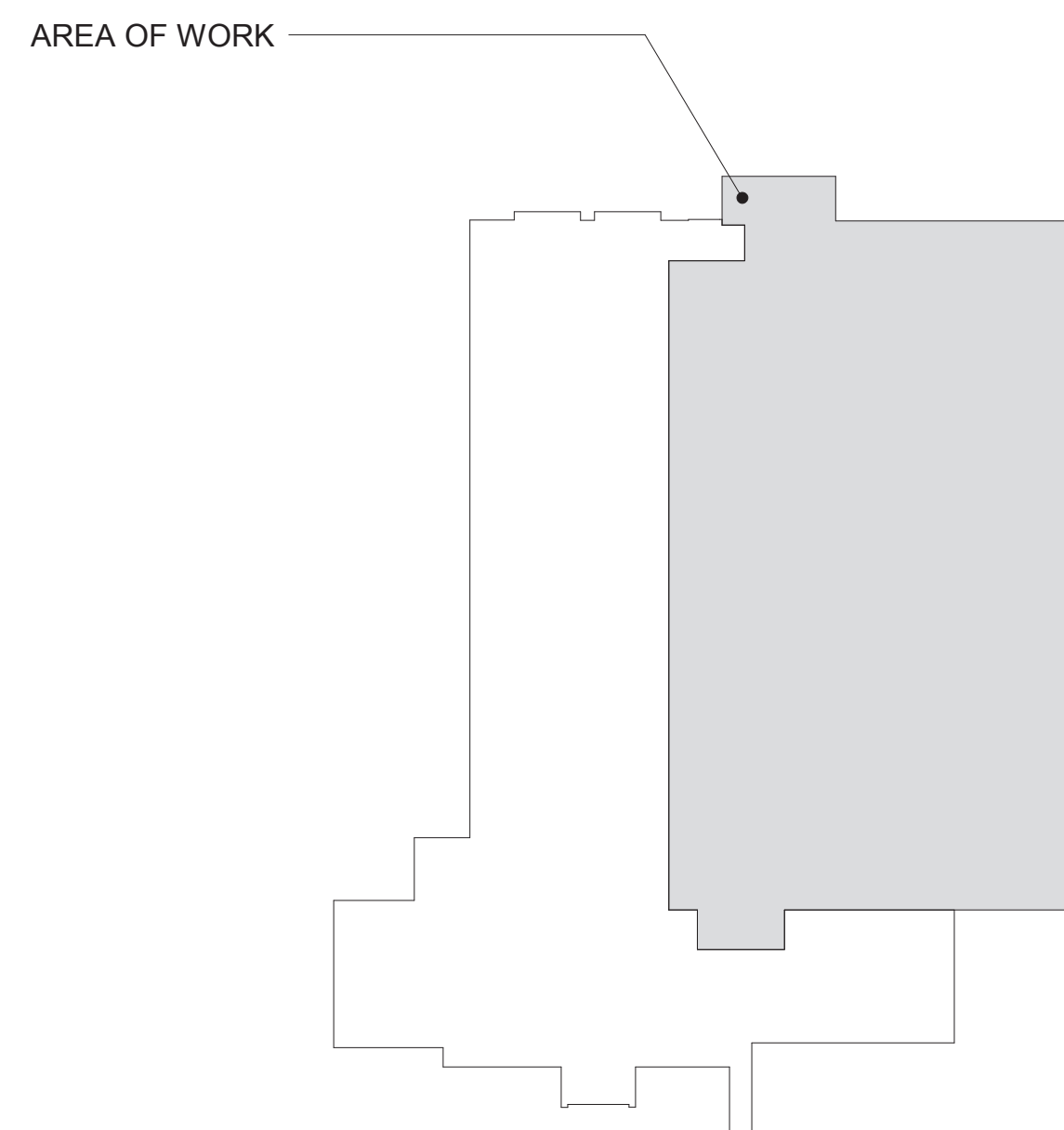
### ABBREVIATIONS

AC	ACCUSTIC/ACOUSTICAL	FLO	FLUORESCENT	PTD	PAINTED
ADD	ADDRESS	FTD	FOOTING	PL	PLUMBING
ADDN	ADDITION	FND	FOUNDATION	PLAM	PLASTIC LAMINATE
AGC	AGGREGATE BASE COURSE	FR	FRAME	PLN	PANEL
AF	ABOVE FRESH FLOOR	F.H.C.	FIRE HOSE CAB.	PNL	PARTITION
AGG	AGGREGATE	FLD	FIELD VERIFY	PNY	PENNY
AC	AIR CONDITIONING	GA	GAUZE	PL	PLATE
AL	ALUMINUM	GL	GLASS / GLAZING	PLUMB	PLUMBING
ALT	ALTERNATE	GR	GRADE	PLYWD	PLYWOOD
A.B.	ANCHOR BOLT	G	GRAM	PT	POINT
A	AND	GRG	GRILLE	P.S.I.	POUNDS PER SQ. IN.
ARCH	ARCHITECT	GRD	GROUND	P.S.F.	POUNDS PER SQ. FT.
ASP	ASPHALT	G.S.	GALVANIZED STEEL	PRC	PRECAST
ACT	ACOUSTICAL CEILING TILE/PANEL	GVP	GYP/PSM	P.L.	PROPERTY LINE
∠	ANGLE	GRS	GRASS	R	RISER, RISERS
BLKS	BLOCKING	H.R.	HAND RAIL	RAD	RADIUS
BSMT	BASEMENT	HDN	HARDENER	R.D.	ROUGH OPENING
BM	BEAM	HDW	HARDWARE	RE	RESILIENT BASE
B.M.	BENCHMARK	HDWD	HARDWOOD	RE	REFER TO
BD	BOARD	HTR	HEATER	REGD	REGISTER
B.O.	BOTTOM OF	HT	HEIGHT	REQD	REQUIRED
BLDG	BUILDING	H.P.	HIGH POINT	REV	REVISION
CABT	CABINET	H.M.	HOLLOW METAL	RFCD	ROOFING
CLIP	CLIP IN PLACE	HORZ	HORIZONTAL	RGH	ROUGH
C.B.	CATCH BASIN	H.B.	HOSE BIB	RM	ROOM
C.D.	CEILING	H.W.	HOT WATER	RND	ROUND
CCM	CEMENT/CEMENTITIOUS	IN	INCH / INCHES	R.O.	ROUGH OPENING
CG	CENTRUM	INBUL	INSULATION	SCHED	SCHEDULE
CM	CENTIMETER	INT	INTERIOR	S.C.	SEALED CONCRETE
CL	CONTROL LINE	INTL	INTERIOR	SCR	SCREW
CER	CERAMIC	INTV	INTERIOR	SECT	SECTION
C.T.	CERAMIC TILE	INTV	INTERIOR	SEL	SELECT
CHAN	CHANNEL	J	JOINT	SHS	SHEATHING
C	CHANNEL	JST	JOIST	SHT	SHEET
CLR	CLEAR	JT	JOINT	SDS	SDS
C.O.	CLEAN OUT	K.P.	KICK PLATE	SLG	SLAB
CLOS	CLOSET	LAM	LAMINATED	SM	SIMILAR
COL	COLUMN	LD	LANDING	SM.	SMOOTH
CONC	CONCRETE	LDG	LANDING	SPEC	SPECIFICATION
CONN	CONNECTION	LTH	LATH	SG	SQUARE
CONCT	CONSTRUCTION	LTV	LATH	ST	STANDARD
C.J.	CONTROL JOINT	LW	LAW	STD	STANDARD
CONT	CONTINUOUS	LW	LAW	S.S.	STAINLESS STEEL
CONTR	CONTRACTOR	LOC	LOCATION	STL	STRUCTURE
CORC	CORRUGATED	LT	LIGHT	STRUC	STRUCTURE
CTR	COUNTER	LW.C	LIGHT WEIGHT CONCRETE	SUSP	SUSPENDED
CTSK	COUNTERSUNK	LVR	LOUVER	SW BD.	SWITCHBOARD
C.M.U.	CONCRETE MASONRY UNIT	LOC	LOCATION	SYS	SYSTEM
D.P.	DAMP PROOFING	M.O.	MASONRY OPENING	T	TREAD
DB	DECIBEL	M.F.R.	MANUFACTURER	T.C.	TOP OF CURB
DIAG	DIAGONAL	MFL	MATERIAL	T.G.	TAMPERED GLASS
DIAM	DIAMETER	MFR	MANUFACTURER	T.O.	TOP OF
DM	DIMENSION	MR	MARKER BOARD	T.S.D.	TOP OF STEEL DECK
DISP	DISPENSER	MAX	MAXIMUM	T.W.	TEACHERS WARDROBE
DWL	DOWEL	MCH	MECHANICAL	TYP	TYPICAL
DN	DOWN	M.L.	METAL LATH	U.O.N.	UNLESS OTHERWISE NOTED
D.S.	DOWNSPOUT	M	METER	V	VENT
DWG	DRAWING	MN.	MINIMUM	VERT.	VERTICAL
EA	EACH	MULD	MULDING	V.G.	VERTICAL GRAN
ELEC	ELECTRIC	MULL	MULLION	VEST.	VESTIBULE
E.W.C.	ELECTRIC WATER COOLER	N.G.	NATURAL GRADE	V.C.T.	VENE COMPOSITION TILE
EL	ELEVATOR	NOM.	NOMINAL	VCP	VITREOUS CLAY PIPE
ELEV	ELEVATOR	N.C.	NOT IN CONTRACT	W.W.M.	WELDED WIRE MESH
EQ	EQUIPMENT	N.T.S.	NOT TO SCALE	W.C.	WATER CLOSET
EQUIP	EQUIPMENT	NO. #	NUMBER	W.F.	WIDE FLANGE
EXPAN	EXPANSION	OBS	OBSURE	W	WITH
E.J.	EXPANSION JOINT	O.C.	ON CENTER	WID	WITHOUT
EXT	EXISTING	OPENG	OPENING	W	WOOD
EXT	EXTERIOR	O.A.	OVERALL	WDW	WINDOW
FT.	FEET / FOOT	O.D.	OUTSIDE DIAMETER	W.W.	WINDOW WALL
FIN	FINISH	O.F.S.	OVERFLOW SCUPPER		
FINI	FINISH	O.F.D.	OVERFLOW DRAIN		
FL	FLASHING	O.H.D.	OVERHEAD DOOR		
FLR	FLOOR				
F.D.	FLOOR DRAIN				

### PROJECT LOCATION



### KEY PLAN



### GENERAL NOTES

- ALL WORK SHALL BE PERFORMED IN ACCORDANCE WITH A.D.A. REQUIREMENTS AND ALL APPLICABLE LOCAL, STATE, AND FEDERAL BUILDING CODES AND REGULATIONS.
- THE CONTRACTOR IS RESPONSIBLE FOR OBTAINING ALL NECESSARY BUILDING PERMITS.
- THE GENERAL CONTRACTOR AND SUBCONTRACTORS SHALL FIELD VERIFY EXISTING CONDITIONS AND NOTIFY THE ARCHITECT OF ANY INCONSISTENCIES OR DISCREPANCIES WITH THE PROJECT DOCUMENTS. ACCESS TO THE SITE AND/OR SPACE UNDER CONSTRUCTION DURING BIDDING AND CONSTRUCTION SHALL BE COORDINATED WITH THE OWNER.
- DO NOT SCALE DRAWINGS.
- THE WORD "ALIGN" AS USED IN THESE DOCUMENTS SHALL SUPERSEDE ANY DIMENSIONAL INFORMATION GIVEN.
- TYPICAL DIMENSIONS ARE TO FACE OF CONCRETE, DRYWALL, CURTAIN WALL, ETC., OR TO COLUMN CENTERLINE. DIMENSIONS AT WINDOWS ARE TYPICALLY TO FACE OF FRAME. REFER TO PLAN DETAILS FOR ADDITIONAL INFORMATION.
- THE GENERAL CONTRACTOR SHALL BE RESPONSIBLE FOR EXAMINING AND CONFIRMING ALL SUBSTRATE CONDITIONS WHERE NEW MATERIALS ARE APPLIED. THE SUBSTRATE SHALL BE SMOOTH AND FREE OF DEFECTS AND SHALL CONFORM TO THE REQUIREMENTS OF THE FINISHED MATERIAL MANUFACTURERS RECOMMENDATIONS.
- THE GENERAL CONTRACTOR SHALL BE RESPONSIBLE FOR CLEAN-UP.
- THE GENERAL CONTRACTOR SHALL INSPECT AND CHECK THE ADEQUACY AND INSTALLATION OF THROUGH-WALL FLASHING PRIOR TO COVERING WITH FINISH MATERIALS. THIS SHALL INCLUDE, BUT IS NOT LIMITED TO INSPECTION AGAINST HOLES OR PENETRATIONS. APPROPRIATE LAPPING AND SEALING, AND OVERALL WORKMANSHIP IN CONFORMANCE WITH THE SPECIFICATIONS.

### SHEET INDEX

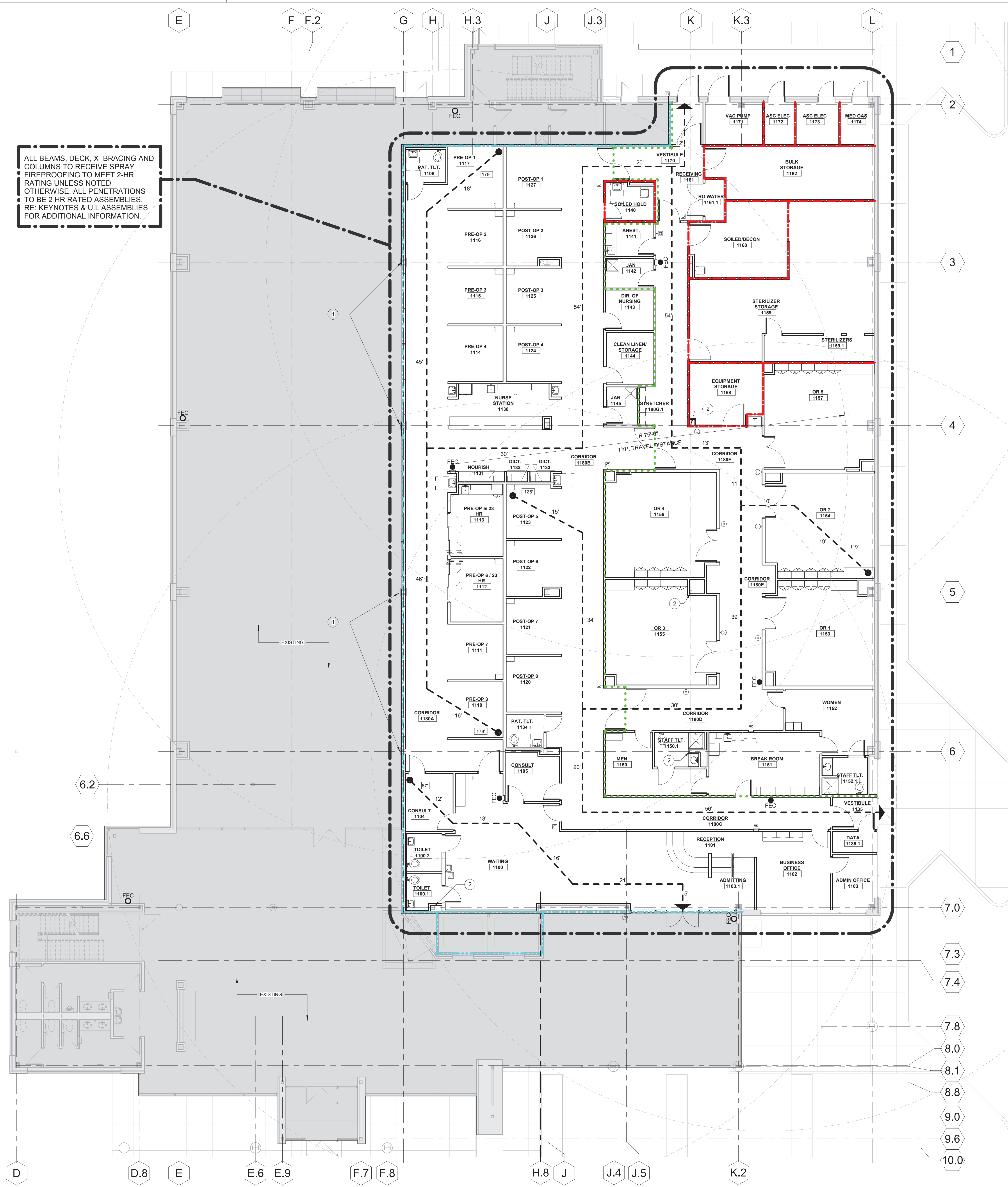
GENERAL	
A0.0	COVER SHEET
A0.1	LIFE SAFETY PLAN
A0.2	PARTITION TYPES AND DETAILS
A0.3	GENERAL NOTES, SYMBOLS, AND LEGENDS
A0.4	U.L. DESIGN ASSEMBLIES
A0.5	U.L. DESIGN ASSEMBLIES
A0.6	U.L. DESIGN ASSEMBLIES
A0.7	U.L. DESIGN ASSEMBLIES
A0.8	U.L. DESIGN ASSEMBLIES
A0.9	U.L. DESIGN ASSEMBLIES
A0.10	U.L. DESIGN ASSEMBLIES
DEMOLITION	
AD 1.0	DEMOLITION PLAN AND DETAILS
ARCHITECTURE	
A2.1	OVERALL FLOOR PLAN
A2.2	FLOOR PLAN - AREA A
A2.3	FLOOR PLAN - AREA B
A2.4	PLAN DETAILS
A3.1	FIRST FLOOR REFLECTED CEILING PLAN
A3.2	REFLECTED CEILING PLAN - AREA A
A3.3	REFLECTED CEILING PLAN - AREA B
A4.1	DOOR SCHEDULE AND FRAME TYPES
A7.1	INTERIOR ELEVATIONS
A7.2	INTERIOR DETAILS
A7.3	WALL SECTIONS AND DETAILS
INTERIOR	
ID1.1	MATERIAL LEGEND AND ROOM FINISH SCHEDULE
ID1.2	INTERIOR FINISH KEYED PLAN
ID1.3	FLOOR FINISH PATTERN PLAN
ID1.4	FURNITURE PLAN
EQUIPMENT	
EQ1.1	FIRST FLOOR EQUIPMENT PLAN
MECHANICAL	
M1.00	MECHANICAL TITLE SHEET
M1.01	MECHANICAL SCHEDULES
M1.02	MECHANICAL DETAILS
M2.01	PARTIAL FIRST FLOOR CEILING PLAN - AREA A - MECHANICAL
M2.02	PARTIAL FIRST FLOOR CEILING PLAN - AREA B - MECHANICAL
M3.01	ROOF PLAN - MECHANICAL
PLUMBING	
P1.00	PLUMBING TITLE SHEET
P1.01	PLUMBING SCHEDULES
P1.02	PLUMBING DETAILS
P1.03	PLUMBING RISER DIAGRAMS
P1.04	PLUMBING RISER DIAGRAMS
P2.00	UNDERGROUND PLAN - PLUMBING
P2.01	FIRST FLOOR PLAN - PLUMBING
P3.01	FIRST FLOOR PLAN - MEDICAL GAS
ELECTRICAL	
E1.00	ELECTRICAL TITLE SHEET
E1.01	ELECTRICAL RISER DIAGRAM
E1.02	ELECTRICAL PANELBOARD SCHEDULES
E1.03	ELECTRICAL PANELBOARD SCHEDULES
E2.01	FIRST FLOOR PLAN - POWER & SYSTEMS
E2.02	FIRST FLOOR PLAN - MECHANICAL POWER
E2.03	ROOF PLAN - ELECTRICAL
E3.01	FIRST FLOOR CEILING PLAN - LIGHTING

Lee's Summit Surgical  
Ambulatory Surgery Facility  
2801 NE Independence Avenue  
Lee's Summit, Missouri 64064

Date	7/1/2019
Job Number	3-18243
Drawn By	BM
Checked By	AD

Revision		
Number	Date	Description

7/3/2019 2:36:20 PM



ALL BEAMS, DECK, X-BRACING AND COLUMNS TO RECEIVE SPRAY FIREPROOFING TO MEET 2-HR RATING UNLESS NOTED OTHERWISE. ALL PENETRATIONS TO BE 2 HR RATED ASSEMBLIES. RE: KEYNOTES & U.L. ASSEMBLIES FOR ADDITIONAL INFORMATION.

**LIFE SAFETY LEGEND**

- EXIT
- NEW FIRE EXTINGUISHER CABINET
- EXISTING FIRE EXTINGUISHER CABINET
- OUT OF SCOPE
- 0 HR SMOKE PARTITION (SMOKE RESISTIVE)
- 1 HR SMOKE BARRIER
- 1 HR FIRE BARRIER
- 2 HR FIRE BARRIER
- 2 HR FIRE SMOKE BARRIER
- TOTAL TRAVEL DISTANCE

**CODE SUMMARY**

**PROJECT CONSTRUCTION PURPOSE:** NEW AMBULATORY SURGERY CENTER

**CODE INFORMATION**  
 2018 INTERNATIONAL BUILDING CODE  
 2018 INTERNATIONAL PLUMBING CODE  
 2018 INTERNATIONAL MECHANICAL CODE  
 2018 INTERNATIONAL FIRE CODE  
 2017 NATIONAL ELECTRICAL CODE (NFPA 70)  
 2012 LIFE SAFETY CODE (NFPA 101)  
 ICC/ANSI A117.1-2017  
 2010 ADA STANDARDS FOR ACCESSIBLE DESIGN/AMERICANS WITH DISABILITIES ACT OF 1990  
 2014 GUIDELINES FOR DESIGN AND CONSTRUCTION OF HOSPITALS AND OUTPATIENT FACILITIES

**NOTE:** IF CODE REQUIREMENTS OVERLAP, THE MOST STRINGENT SHALL APPLY.

**OWNER INFORMATION**  
 PARTNERS SURGICAL CORPORATION  
 2200 POST OAK BLVD  
 SUITE 1255  
 HOUSTON, TEXAS 77056

**DESIGNER INFORMATION**  
 ACI/BOLAND ARCHITECTS  
 1710 WYANDOTTE ST  
 KANSAS CITY, MO 64108  
 PHONE: (816) 763-9600  
 FAX: (816) 763-9757

**LOCAL AUTHORITY**  
 RESPONDING FIRE SERVICE: LEE'S SUMMIT FIRE DEPARTMENT  
 LOCAL BUILDING INSPECTION: LEE'S SUMMIT DEVELOPMENT SERVICES

**OCCUPANCY GROUP:**  
 B - BUSINESS

**OCCUPANT LOAD:**  
 AMBULATORY SURGICAL CENTER: 100 SF / OCCUPANT  
 TOTAL SQUARE FOOTAGE: 13,260 OSF  
 TOTAL NUMBER OF OCCUPANTS = 133

**EGRESS WIDTHS:**  
 133 X 0 15 = 19.95' REQUIRED  
 (116" X 4" DOOR, 01 4'-5" DOORS = 168" PROVIDED)

**TYPE OF CONSTRUCTION:**  
 IIB

**AREA OF RENOVATION:**  
 13,260 SF

**REQUIRED FIRE RESISTANCE RATINGS (IN HOURS) PER NFPA 101 A.2.1.2:**

EXTERIOR BEARING WALLS	0 HR
INTERIOR BEARING WALLS	0 HR
PRIMARY STRUCTURAL FRAME	2 HR
FLOOR CONSTRUCTION (TI ONLY)	2 HR
ROOF CONSTRUCTION	0 HR
INTERIOR NON-BEARING WALLS	0 HR

**ACTIVE FIRE SAFETY FEATURES:**  
 - FIRE ALARM SYSTEM - THE FIRE ALARM SYSTEM IS SPECIFIED AS AN ADDRESSABLE TYPE SYSTEM. THE DEVICE TYPE AND LOCATIONS ARE PER THE APPLICABLE CODES AS WELL AS ADA REQUIREMENTS.  
 - SMOKE CONTROL SYSTEM - ALL DUCTWORK PENETRATING SMOKE RATED WALLS WILL HAVE A SMOKE OR COMBINATION FIRE/SMOKE DAMPER AS INDICATED ON CONSTRUCTION DOCUMENTS. THESE DAMPERS WILL CLOSE UPON DETECTION OF SMOKE BY THE AREA SMOKE DETECTORS OR DUCT SMOKE DETECTORS IN THE AIR HANDLING UNITS.  
 - FIRE SPRINKLER SYSTEM - SPECIFIED TO BE PER NFPA 13. THE SPRINKLER HEADS ARE SPECIFIED TO BE QUICK RESPONSE TYPE.  
 - EMERGENCY LIGHTING AND POWER - EMERGENCY LIGHTING, LIFE SAFETY AND CRITICAL LOADS WILL RECEIVE POWER FROM A BACKUP GENERATOR LOCATED OUTSIDE THE MAIN ELECTRICAL ROOM.  
 - ILLUMINATED EXIT SIGNS

**PASSIVE FIRE SAFETY FEATURES:**  
 - SMOKE COMPARTMENTS NO GREATER THAN 22,500 SF  
 - FIREPROOFING STRUCTURAL STEEL AND DECK.

**KEYNOTES - LIFE SAFETY PLAN**

Number	Comments
1	GYP. BD. MTL. STUD FIRE RATED COLUMN WRAP ASSEMBLY, TYP. RE: UL ASSEMBLY #529.
2	PROVIDE INTUMESCENT PAINT COATING @ STEEL COLUMN TO MEET UL#661 RE: UL ASSEMBLIES

**A1 LIFE SAFETY PLAN**  
 1/8" = 1'-0"

**GRAPHIC SCALE**

0 8 16 24 32

**NORTH**

\*THIS DRAWING IS INTENDED TO BE PRINTED IN COLOR. USE BLACK AND WHITE COPIES AT YOUR OWN RISK.



Samuel K. Beckman - Architect  
License - Missouri EA-2011012130

**ACI BOLAND ARCHITECTS**

1710 Wyandotte  
Kansas City, MO 64108  
T: 816.763.9600

ACI/Boland, Inc.  
Kansas City | St. Louis  
Licensee's Certificate of Authority Number:  
Missouri: #000958

**MEP CONSULTANT**  
G&W Engineering Corporation  
138 Weldon Parkway  
Maryland Heights, MO 63043  
Licensee's Certificate of Authority Number:  
#2002018767  
Phone Number: 314.737.4200

**INTERIOR & EQUIPMENT CONSULTANT**  
Benson Method  
8021 Santa Fe Drive, Ste 100  
Overland Park, KS 66204  
Licensee's Certificate of Authority Number:  
Phone Number: 913.221.0930

**Lee's Summit Surgical**  
Ambulatory Surgery Facility  
2801 NE Independence Avenue  
Lee's Summit, Missouri 64064

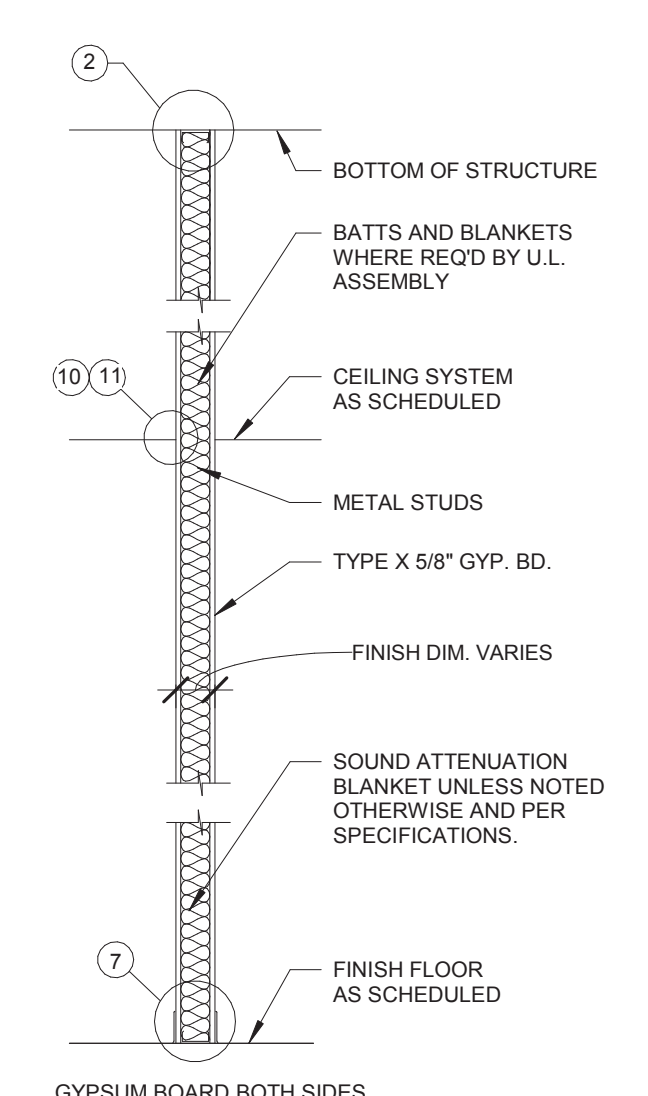
Date: 7/1/2019  
Job Number: 3-18243  
Drawn By: BM  
Checked By: AD

Revision

Number	Date	Description

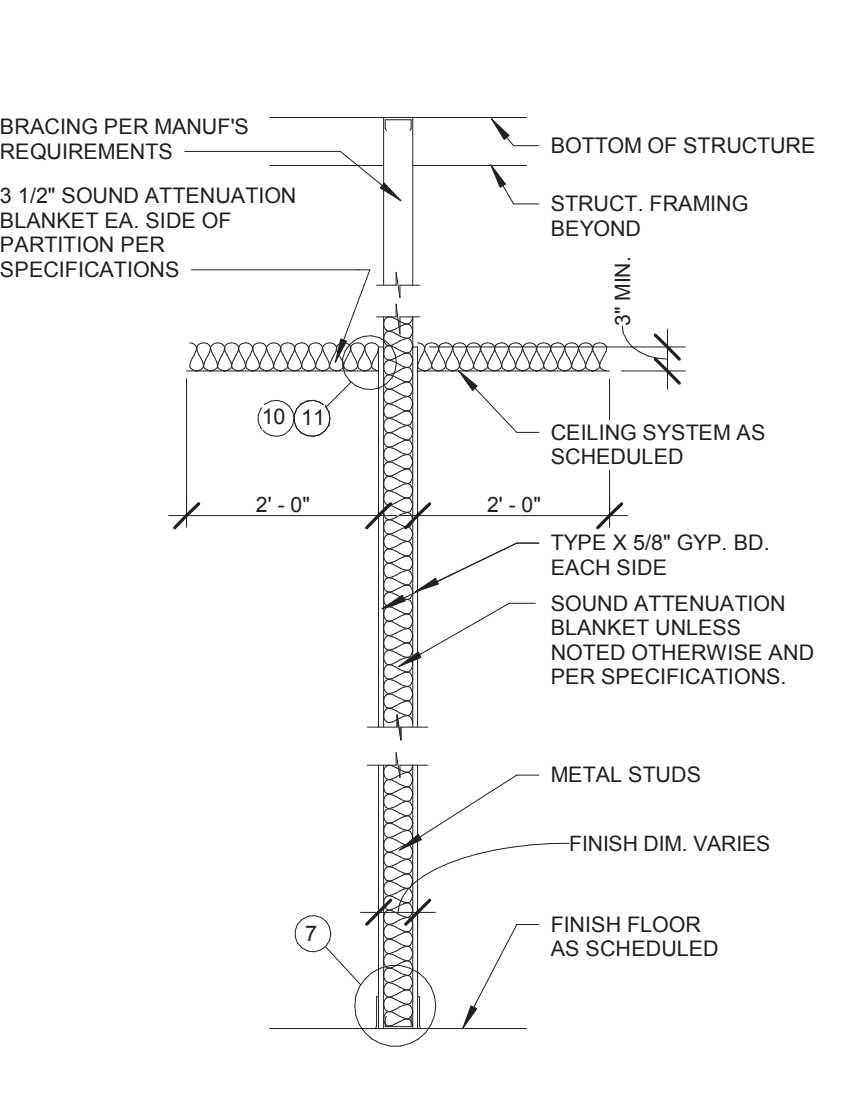
**A0.1**

© 2019 ACI/BOLAND, Inc.  
LIFE SAFETY PLAN

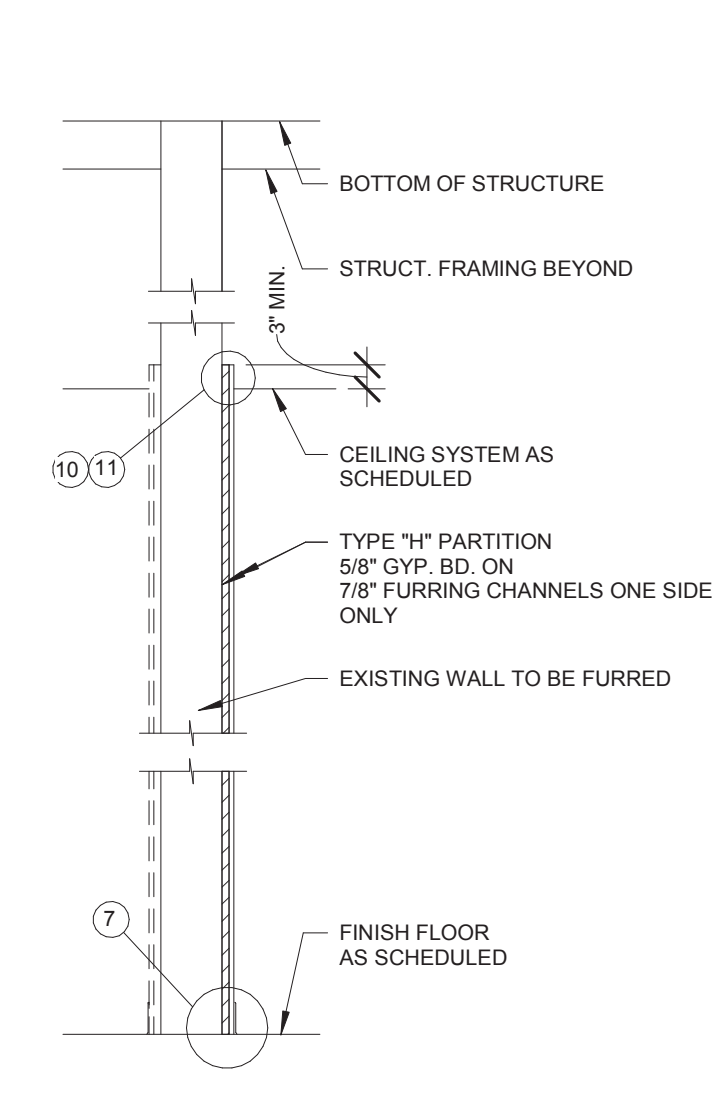


**A** GYPSUM BOARD BOTH SIDES, NON-RATED, TYPICAL  
1/2" x 1'-0"

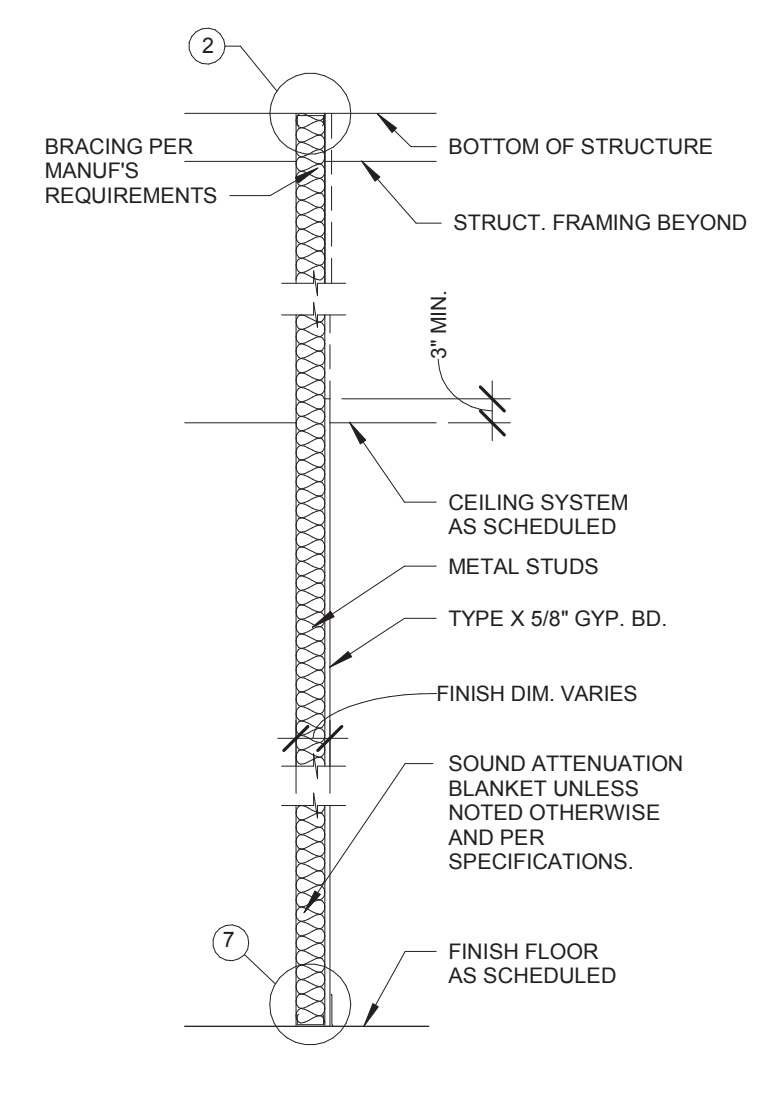
U.L. DESIGNATIONS AT RATED WALLS AS INDICATED ON LIFE SAFETY PLAN	
	1 HOUR FIRE SEPARATION U.L. U465 FOR 3 5/8\"/>
	U.L. U442 AT FLEED WALLS U.L. U461 FOR 2 1/2\"/>



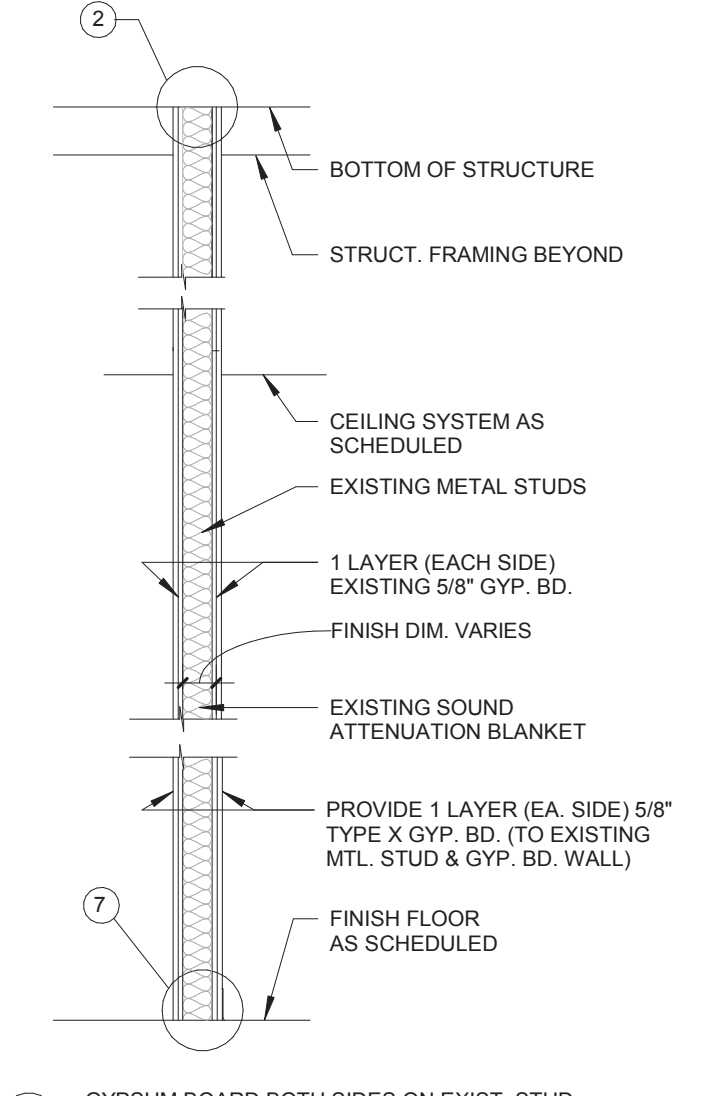
**G** GYPSUM BOARD CEILING HEIGHT  
1/2" x 1'-0"



**H** GYPSUM BOARD ON FURRING CHANNELS, ONE  
1/2" x 1'-0"



**K** GYPSUM BOARD ONE SIDE ONLY, CEILING  
1/2" x 1'-0"

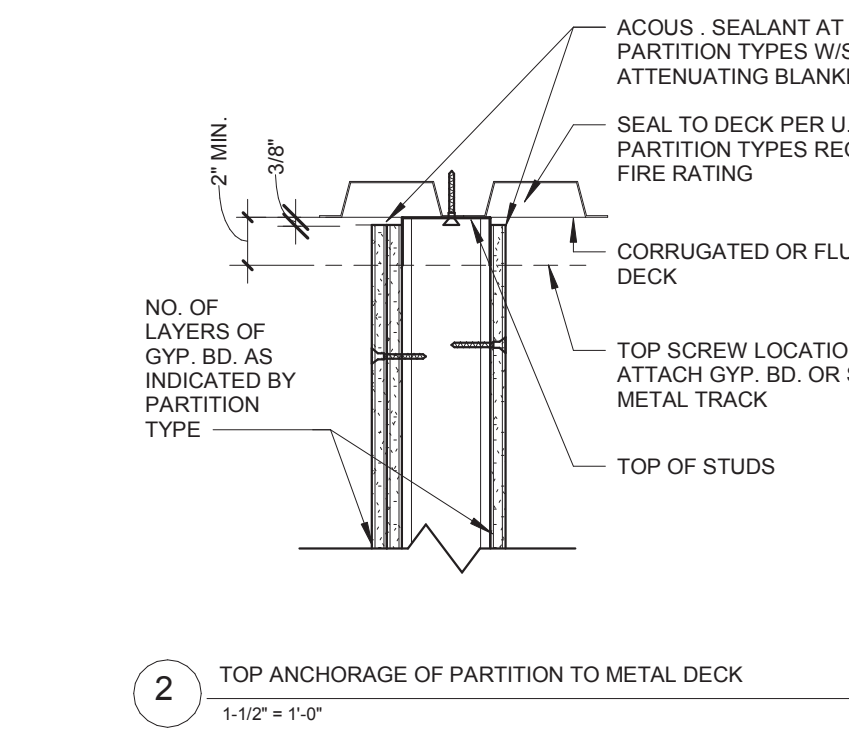


**X** GYPSUM BOARD BOTH SIDES ON EXIST. STUD  
1/2" x 1'-0"

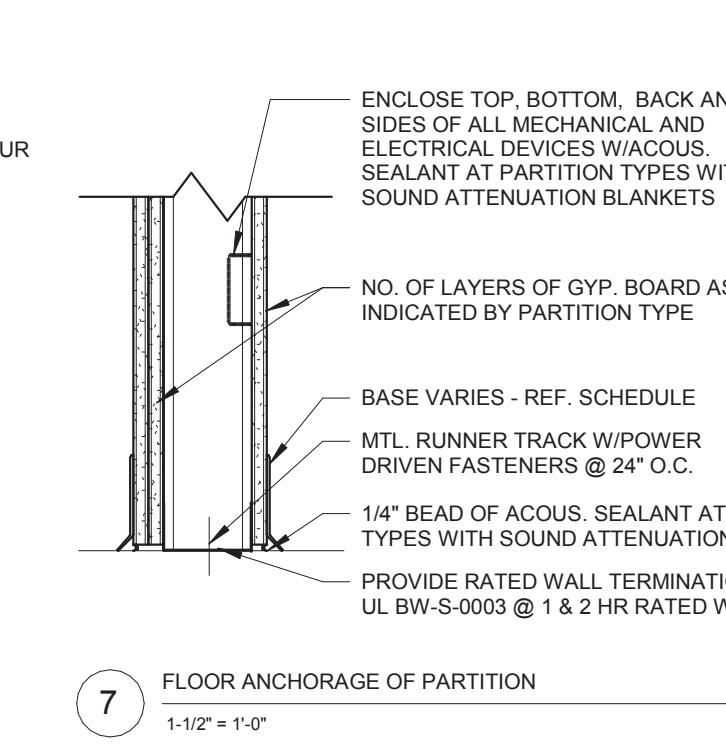
U.L. DESIGNATIONS AT RATED WALLS AS INDICATED ON LIFE SAFETY PLAN	
	2 HR FIRE BARRIER U.L. U411 FOR 6\"/>



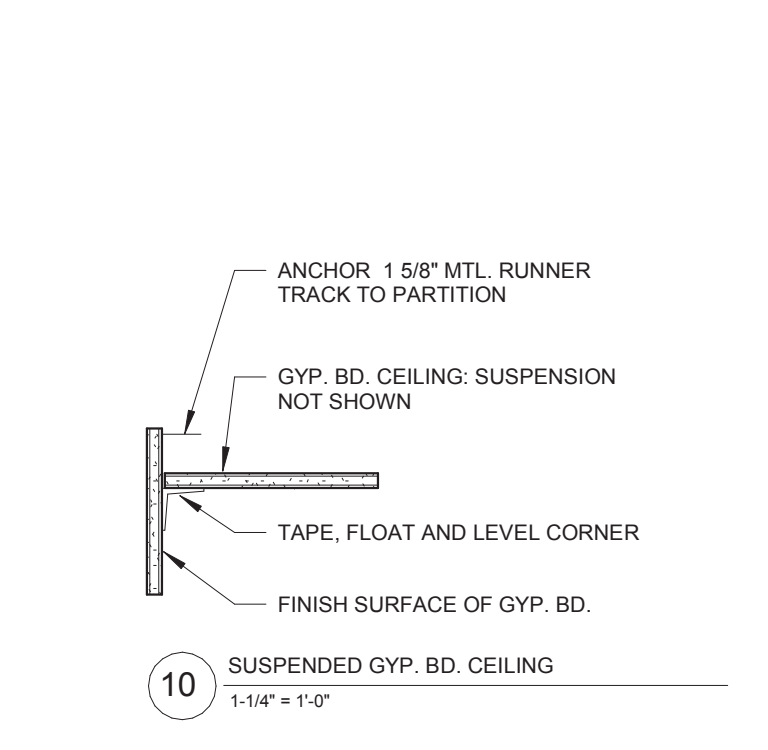
**1** TOP ANCHORAGE OF PARTITION TO METAL DECK  
1-1/2" x 1'-0"



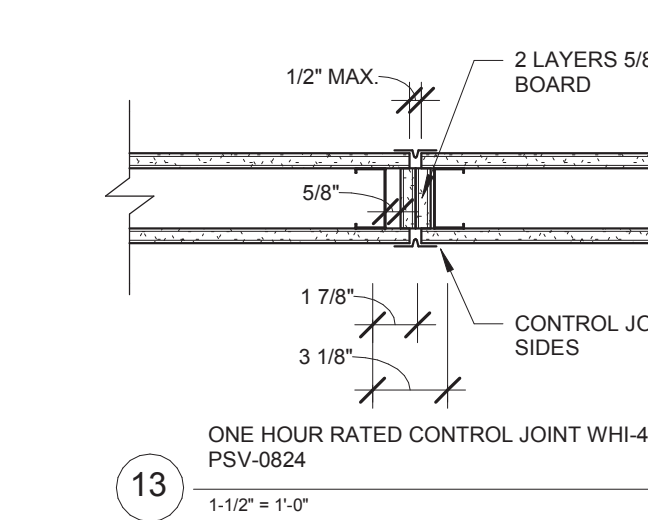
**7** FLOOR ANCHORAGE OF PARTITION  
1-1/2" x 1'-0"



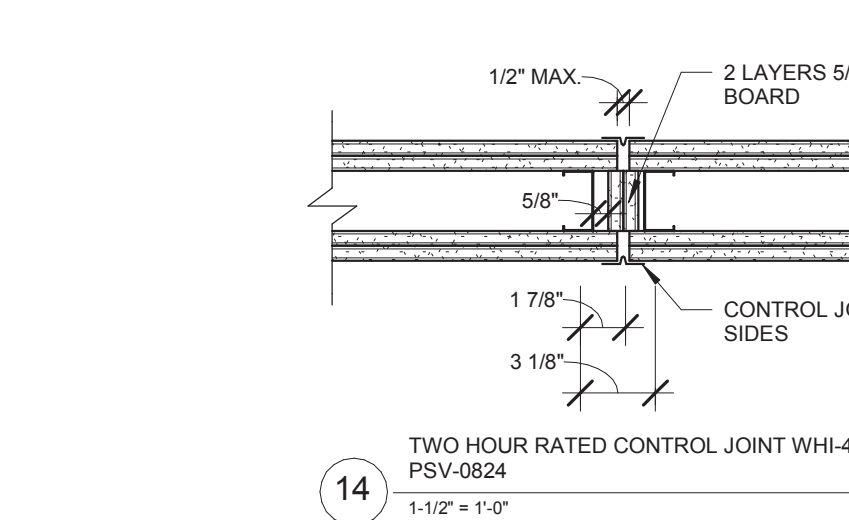
**10** SUSPENDED GYP. BD. CEILING  
1-1/4" x 1'-0"



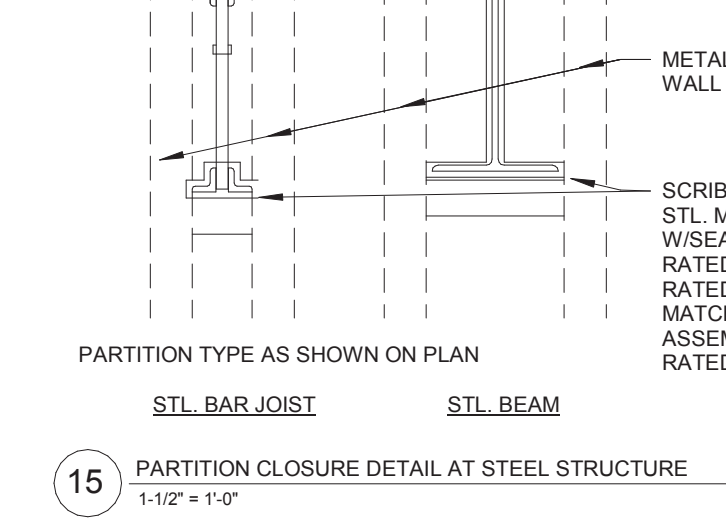
**11** CEILING DETAILS FOR GYP. BD. VERTICAL SURFACES  
1-1/4" x 1'-0"



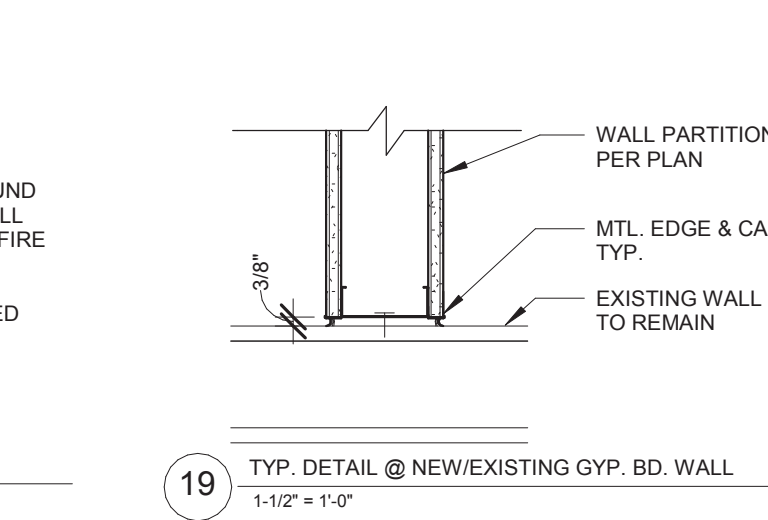
**13** ONE HOUR RATED CONTROL JOINT WHI-495-PSV-0824  
1-1/2" x 1'-0"



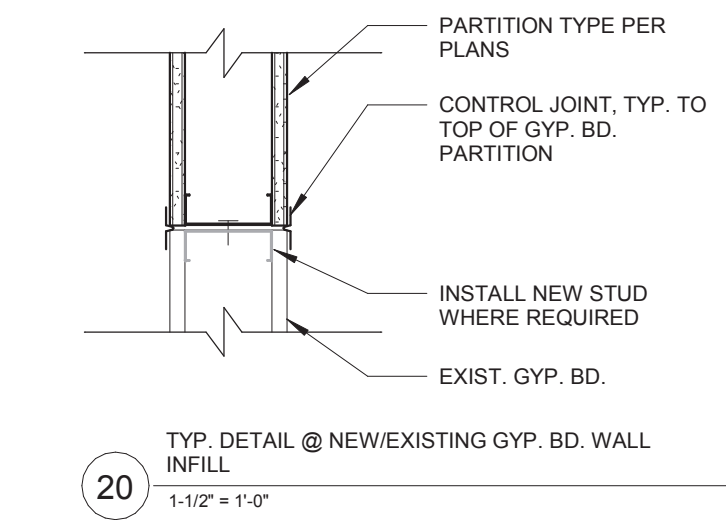
**14** TWO HOUR RATED CONTROL JOINT WHI-495-PSV-0824  
1-1/2" x 1'-0"



**15** PARTITION CLOSURE DETAIL AT STEEL STRUCTURE  
1-1/2" x 1'-0"



**19** TYP. DETAIL @ NEW/EXISTING GYP. BD. WALL  
1-1/2" x 1'-0"



**20** TYP. DETAIL @ NEW/EXISTING GYP. BD. WALL INFILL  
1-1/2" x 1'-0"

### PARTITION GENERAL NOTES

- UNLESS NOTED OTHERWISE, ALL INTERIOR METAL STUDS ARE 3 5/8" THICK. REFER TO SUFFIX SCHEDULE BELOW FOR LOCATIONS OF METAL STUDS OTHER THAN 3-5/8" THICK. NOTE: STUD THICKNESS (GAUGE) MUST CONFORM TO MANUFACTURER'S RECOMMENDATIONS FOR SPAN (HEIGHT OF STUD).
- WHERE THE PARTITION TYPE INDICATION IS SHOWN WITH A NUMERICAL SUFFIX, THE METAL STUD THICKNESS SHALL BE AS SCHEDULED BELOW:
 

SUFFIX	MTL. STUD THICKNESS
1	1-5/8" MTL. STUDS
2	2-1/2" MTL. STUDS
3	6" MTL. STUDS
- UNLESS NOTED OTHERWISE, ALL INTERIOR DRYWALL PARTITIONS INDICATED ON THE FLOOR PLAN DRAWING ARE TYPE 'A' PARTITIONS, WHERE OCCURS, RATINGS ARE AS INDICATED ON THE LIFE SAFETY PLANS.
- UNLESS NOTED OTHERWISE, ALL CMU PARTITIONS ARE 7-5/8", 8" NOMINAL. REFER TO SUFFIX SCHEDULE BELOW FOR LOCATIONS OF CMU PARTITIONS OTHER THAN 8" NOMINAL.
 

SUFFIX	CMU THICKNESS
1	ACTUAL 3-5/8", 4" NOMINAL
2	ACTUAL 5-5/8", 6" NOMINAL
3	ACTUAL 11-5/8", 12" NOMINAL
- WHERE THE PARTITION TYPE INDICATION IS SHOWN WITH A NUMERICAL SUFFIX, THE CMU THICKNESS SHALL BE AS SCHEDULED BELOW:
 

SUFFIX	CMU THICKNESS
1	ACTUAL 3-5/8", 4" NOMINAL
2	ACTUAL 5-5/8", 6" NOMINAL
3	ACTUAL 11-5/8", 12" NOMINAL
- UNLESS NOTED OTHERWISE, ALL INTERIOR MASONRY PARTITIONS INDICATED ON THE FLOOR PLAN DRAWING ARE TYPE 'B' PARTITIONS, WHERE OCCURS, RATINGS ARE AS INDICATED ON THE LIFE SAFETY PLANS.
- ALL STUDS ARE CONTINUOUS FROM FLOOR STRUCTURE TO CEILING STRUCTURE UNLESS NOTED OTHERWISE.
- METAL STUDS ARE SPACED @ 16" O.C. MAX., UNLESS NOTED OTHERWISE.
- UNLESS NOTED OTHERWISE, ALL GYPSUM BOARD IS TO BE 5/8" THICK "FIRECODE".
- THE LOCATION OF A CHANGE IN THE PARTITION TYPE IS INDICATED BY A WALL TAG.
- FIRE AND SMOKE WALLS ARE SHOWN ON THE LIFE SAFETY PLAN (A0.1) WITH THE FIRE RATINGS INDICATED AS FOLLOWS:
 

	SMOKE PARTITION (NON-RATED- SMOKE RESISTIVE)
	1 HR SMOKE BARRIER
	1 HR FIRE BARRIER
	1 HR FIRE SMOKE BARRIER
	2 HR FIRE BARRIER
	2 HR FIRE SMOKE BARRIER
- THE CORRESPONDING RATED ASSEMBLIES ARE INDICATED BELOW THE PARTITION TYPES.
- PARTITION TYPE DESIGNATIONS ARE INDICATED ON THE FLOOR PLAN DRAWINGS.
- PARTITION TYPES DO NOT INCLUDE APPLIED FINISHES CALLED FOR IN THE ROOM FINISH SCHEDULE.
- AT PARTITION TYPES WHERE MTL. STUDS ARE EXPOSED ON ONE OR BOTH SIDES, CUT STUD 1/4" SHORT AND SCREW BOTH SIDES TO MTL. RUNNER TRACK.



Samuel K. Beckman - Architect  
License - Missouri EA-2011012130



1710 Wyandotte  
Kansas City, MO 64108  
T: 816.763.9600

ACI/Boland, Inc.  
Kansas City | St. Louis  
Licensee's Certificate of Authority Number:  
Missouri: #000958

**MEP CONSULTANT**  
G&W Engineering Corporation  
138 Weldon Parkway  
Maryland Heights, MO 63043  
Licensee's Certificate of Authority Number:  
#2002018767  
Phone Number: 314.737.4200

**INTERIOR & EQUIPMENT CONSULTANT**

Benson Method  
8021 Santa Fe Drive, Ste 100  
Overland Park, KS 66204  
Licensee's Certificate of Authority Number:  
Phone Number: 913.221.0930

Lee's Summit Surgical  
Ambulatory Surgery Facility  
2801 NE Independence Avenue  
Lee's Summit, Missouri 64064

Date 7/1/2019  
Job Number 3-18243  
Drawn By BM  
Checked By AD

Revision  
Number Date Description



Samuel K. Beckman - Architect  
License - Missouri EA-2011012130

# ACI BOLAND ARCHITECTS

1710 Wyandotte  
Kansas City, MO 64108  
T: 816.763.9600

ACI/Boland, Inc.  
Kansas City | St. Louis  
Licensee's Certificate of Authority Number:  
Missouri: #000958

**MEP CONSULTANT**  
G&W Engineering Corporation  
138 Weldon Parkway  
Maryland Heights, MO 63043  
Licensee's Certificate of Authority Number:  
#2002018767  
Phone Number: 314.737.4200

## INTERIOR & EQUIPMENT CONSULTANT

**Benson Method**  
8021 Santa Fe Drive, Ste 100  
Overland Park, KS 66204  
Licensee's Certificate of Authority Number:  
Phone Number: 913.221.0930

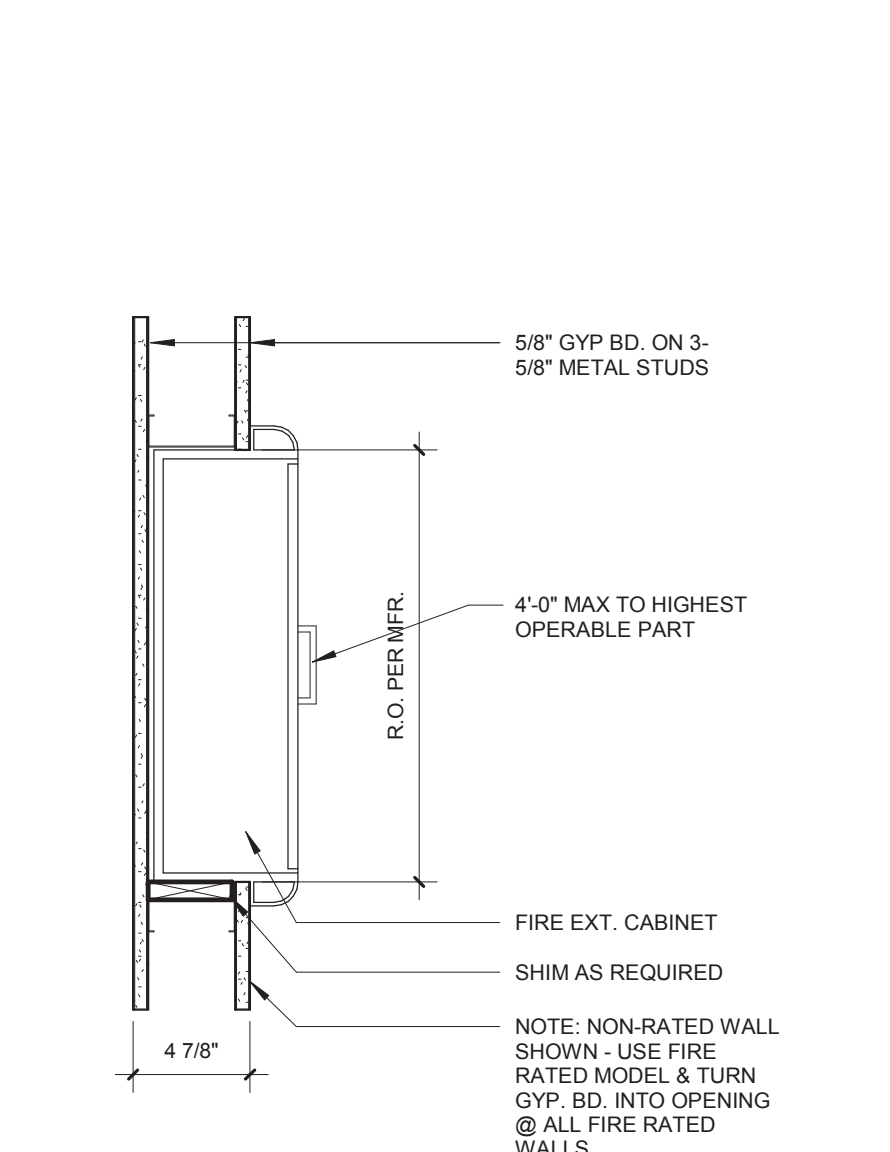
**Lee's Summit Surgical**  
Ambulatory Surgery Facility  
2801 NE Independence Avenue  
Lee's Summit, Missouri 64064

Date: 7/1/2019  
Job Number: 3-18243  
Drawn By: Author  
Checked By: Checker

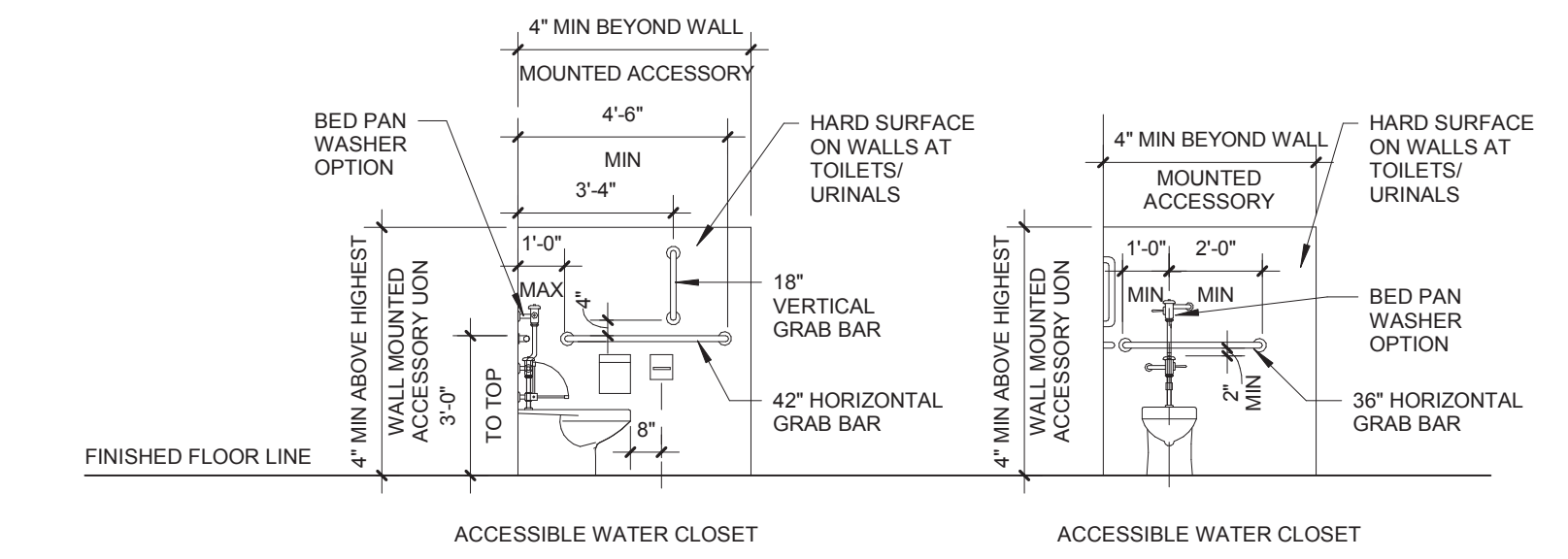
Revision  
Number Date Description

# A0.3

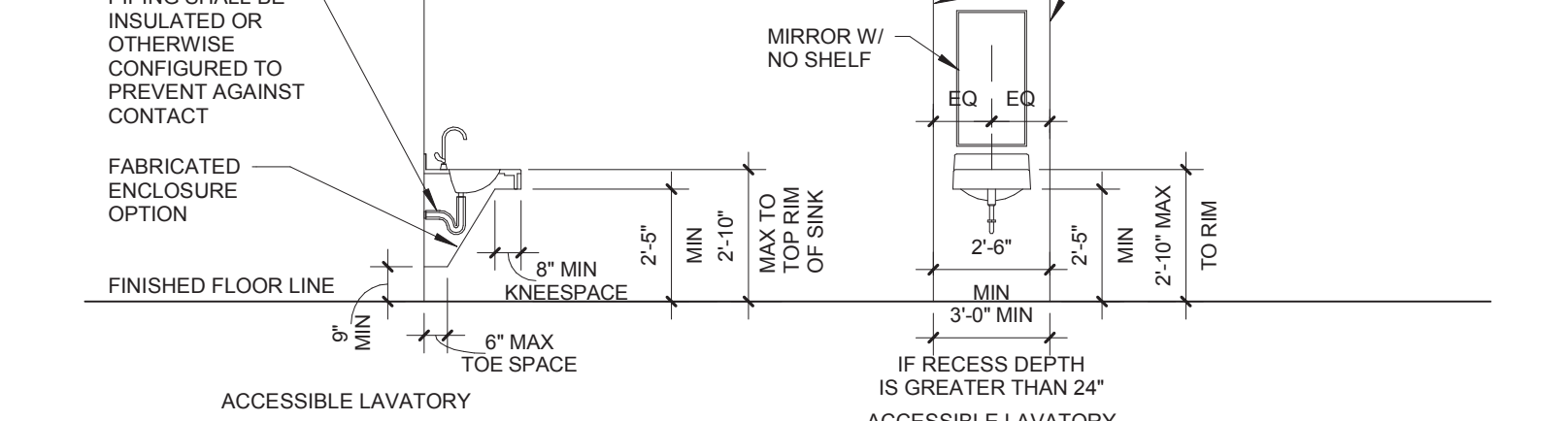
© 2019 ACI/BOLAND, Inc.  
GENERAL NOTES, SYMBOLS, AND LEGENDS



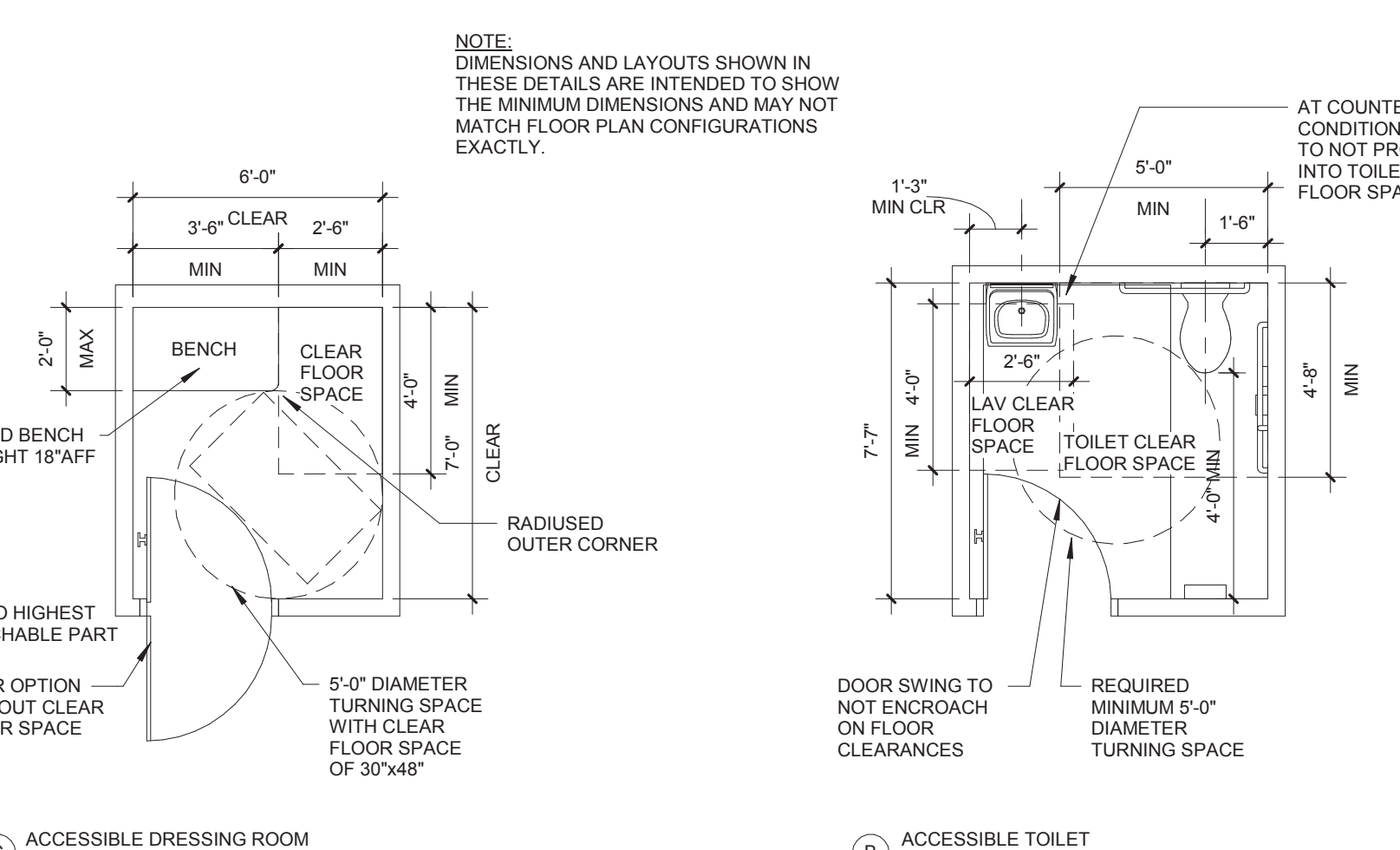
**B6 FIRE EXTINGUISHER CABINET DETAIL**  
1 1/2" = 1'-0"



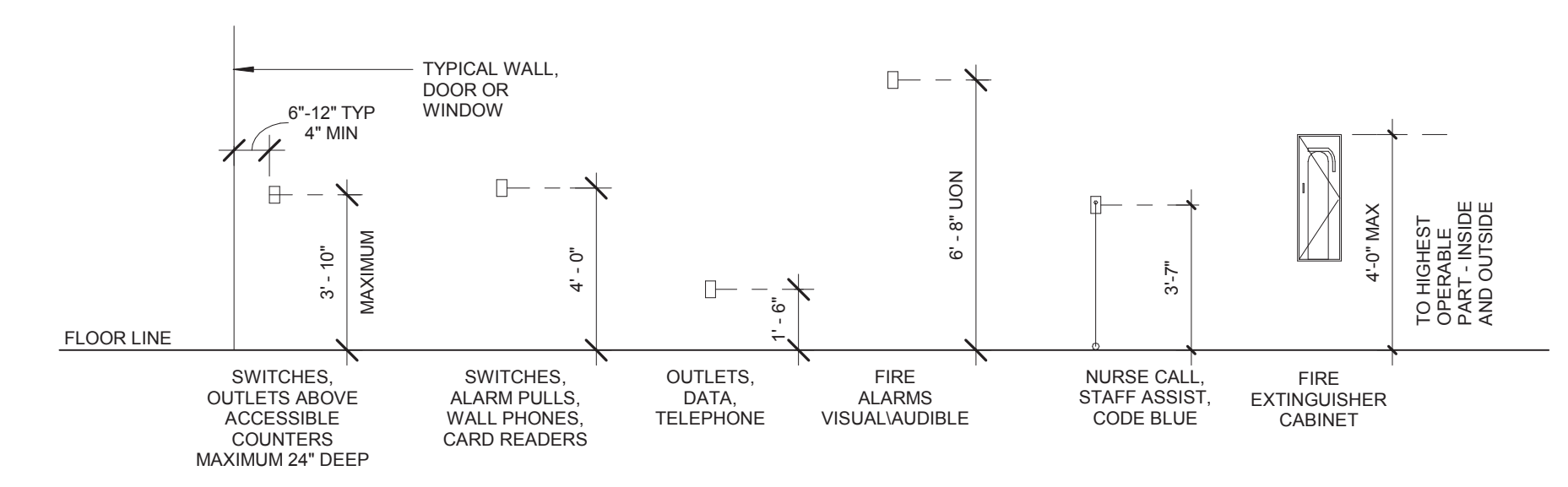
**TYPICAL FIXTURE ELEVATION**  
1/4" = 1'-0"



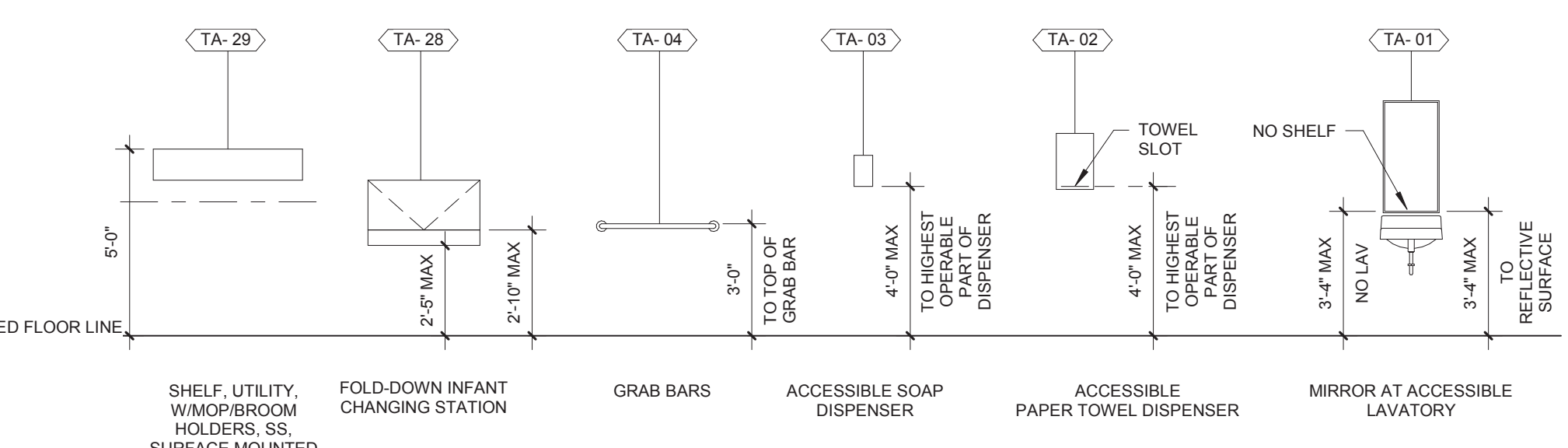
**TYPICAL FIXTURE ELEVATION**  
1/4" = 1'-0"



**GENERAL ADA TOILET DIMENSIONS**  
1/4" = 1'-0"

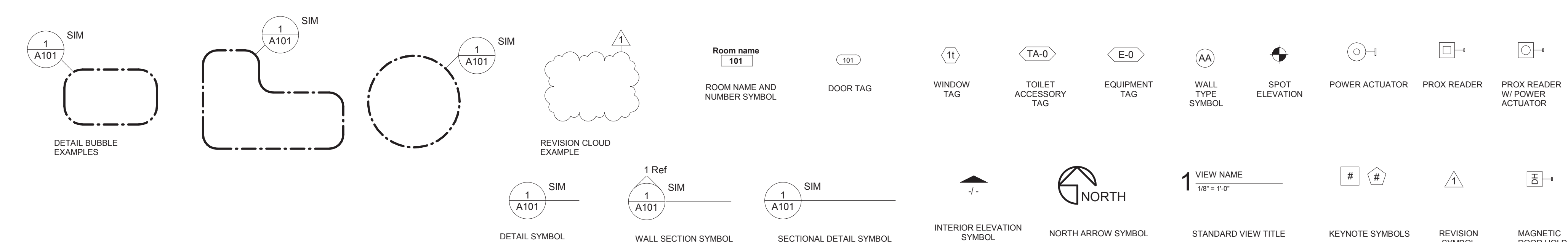
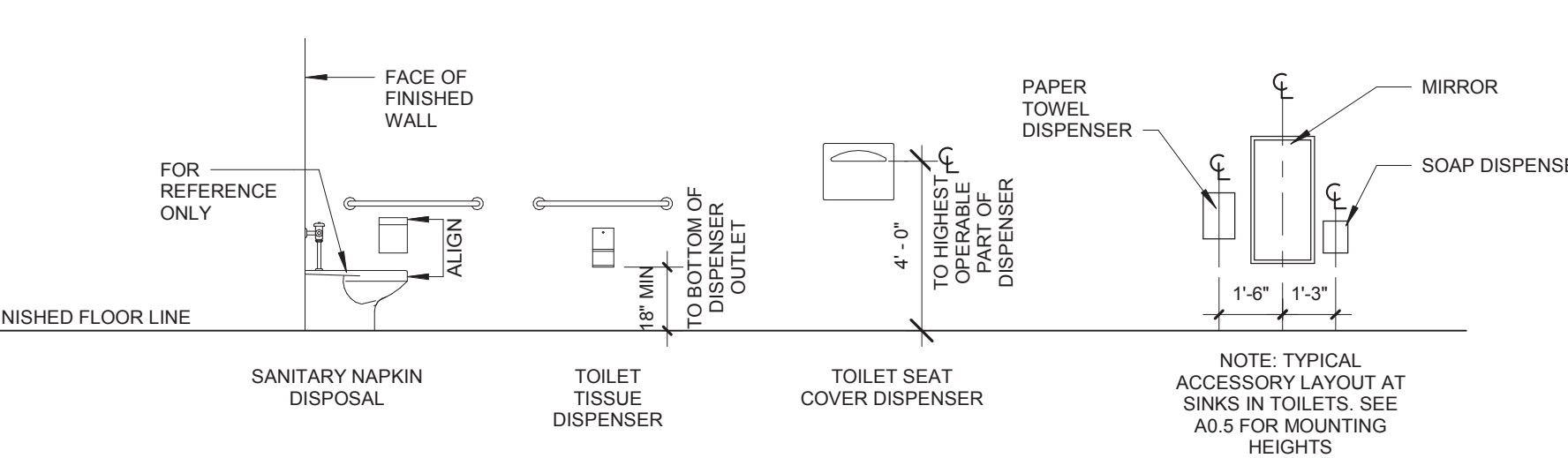


**TYPICAL MOUNTING HEIGHTS**  
1/4" = 1'-0"



**TOILET ACCESSORY MOUNTING HEIGHTS**  
1/4" = 1'-0"

TYPE MARK	DESCRIPTION	RESPONSIBILITY	COMMENTS
TA-01	MIRROR (18" X 36")	CFGI	PROVIDE IN WALL BLOCKING
TA-01.3	FULL HEIGHT MIRROR (24" X 60")	CFGI	PROVIDE IN WALL BLOCKING
TA-02	PAPER TOWEL DISPENSER	CFGI	PROVIDE IN WALL BLOCKING
TA-03	SOAP DISPENSER	CFGI	PROVIDE IN WALL BLOCKING
TA-04	HORIZONTAL GRAB BAR 36"	CFGI	PROVIDE IN WALL BLOCKING
TA-05	HORIZONTAL GRAB BAR 48"	CFGI	PROVIDE IN WALL BLOCKING
TA-06	VERTICAL GRAB BAR 24"	CFGI	PROVIDE IN WALL BLOCKING
TA-08	TOILET PAPER DISPENSER	CFGI	PROVIDE IN WALL BLOCKING
TA-09	CUBICLE CURTAINS & TRACKS	CFGI	PROVIDE CEILING BLOCKING
TA-12	COAT HOOK	CFGI	PROVIDE IN WALL BLOCKING
TA-12.1	STRIP COAT HOOKS	CFGI	PROVIDE IN WALL BLOCKING
TA-20	CORNER SHOWER GRAB BAR	CFGI	PROVIDE IN WALL BLOCKING
TA-24	SHOWER CURTAIN, ROD & HOOKS	CFGI	PROVIDE IN WALL BLOCKING
TA-25	SHOWER SEAT	CFGI	PROVIDE IN WALL BLOCKING, FLIP DOWN INTEGRATED BENCH W/ TEAK FINISH
TA-28	BABY CHANGING STATION	CFGI	PROVIDE IN WALL BLOCKING
TA-29	UTILITY SHELF	CFGI	PROVIDE IN WALL BLOCKING



**SYMBOLS**  
1/4" = 1'-0"











Design No. U442  
Fire Resistance Ratings - ANSI/UL 263

Fire Resistance Ratings - ANSI/UL 263  
Fire Resistance Ratings - ANSI/UL 263  
Fire Resistance Ratings - ANSI/UL 263

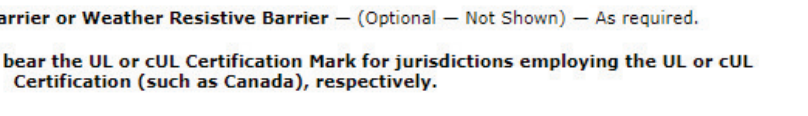
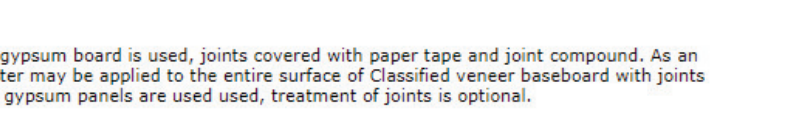
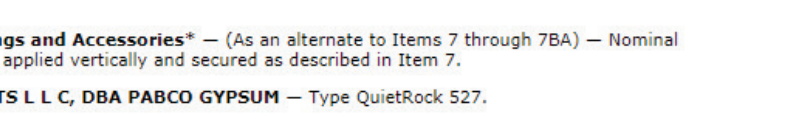
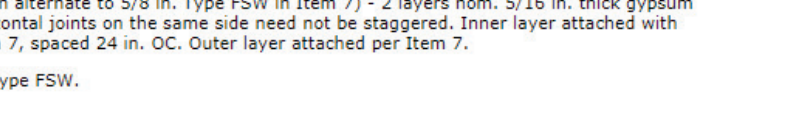
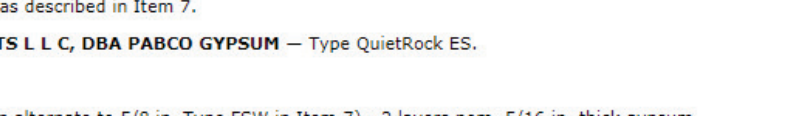
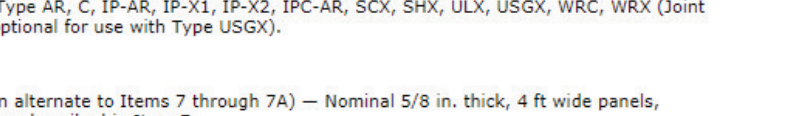
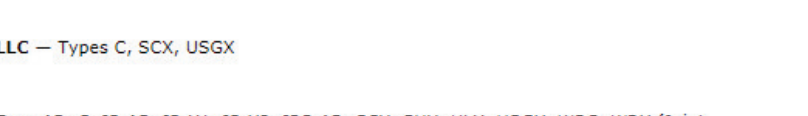
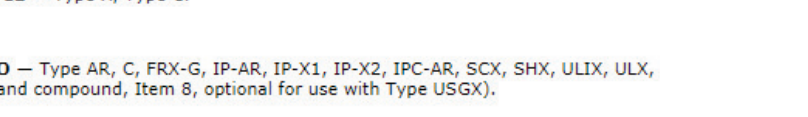
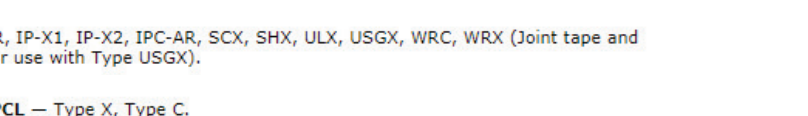
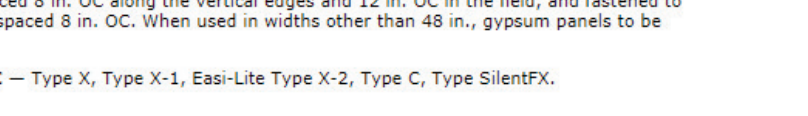
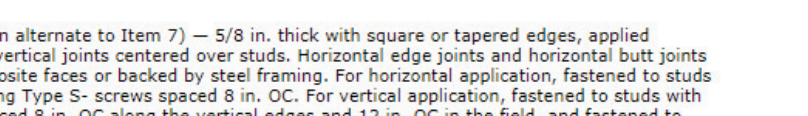
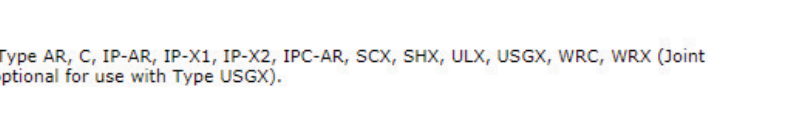
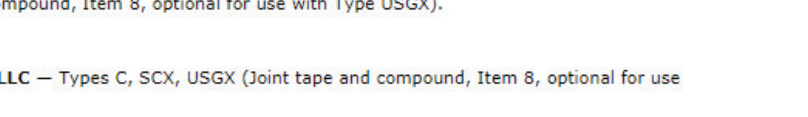
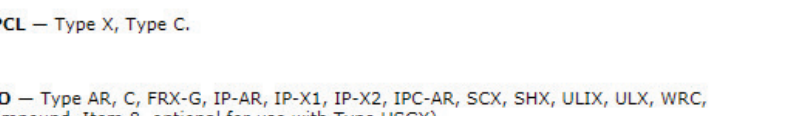
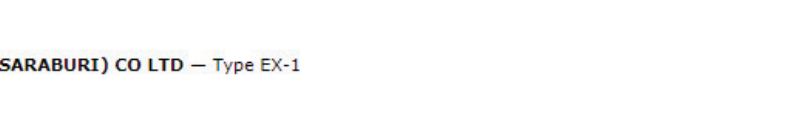
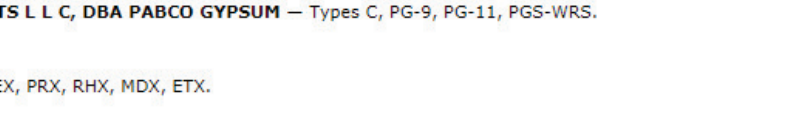
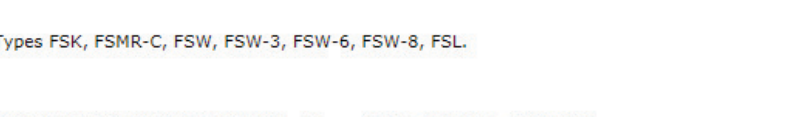
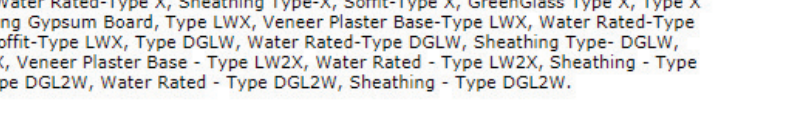
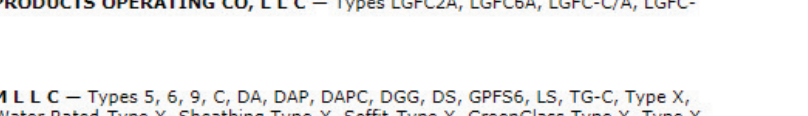
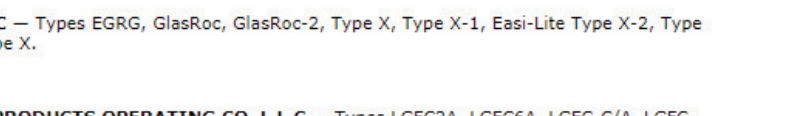
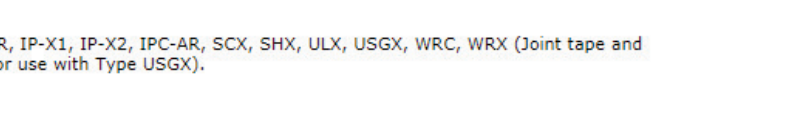
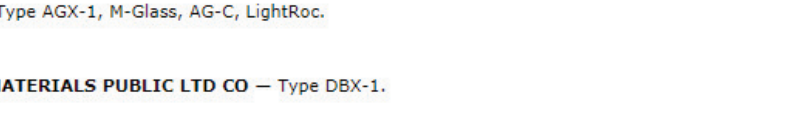
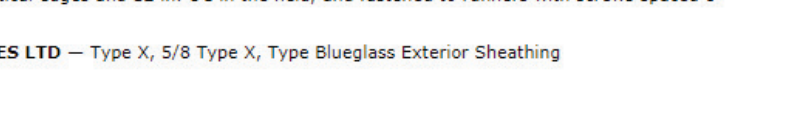
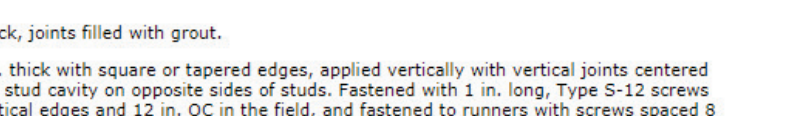
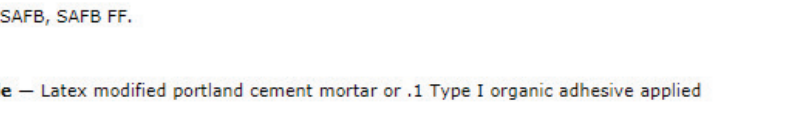
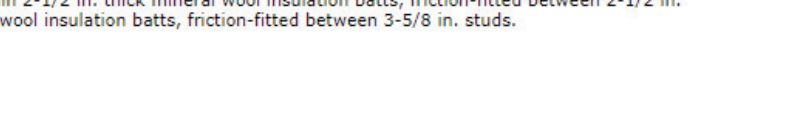
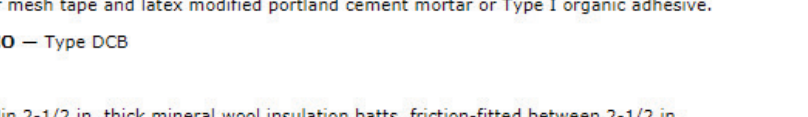
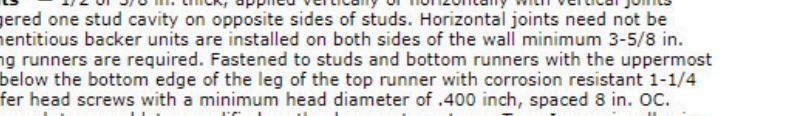
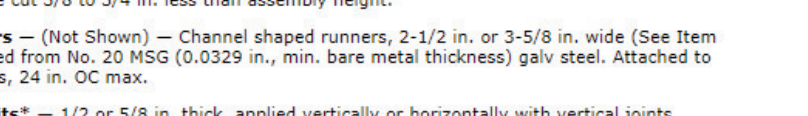
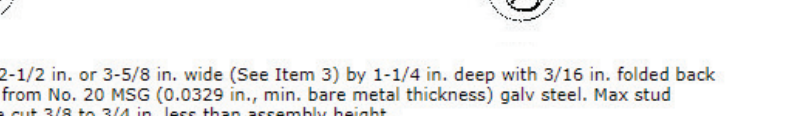
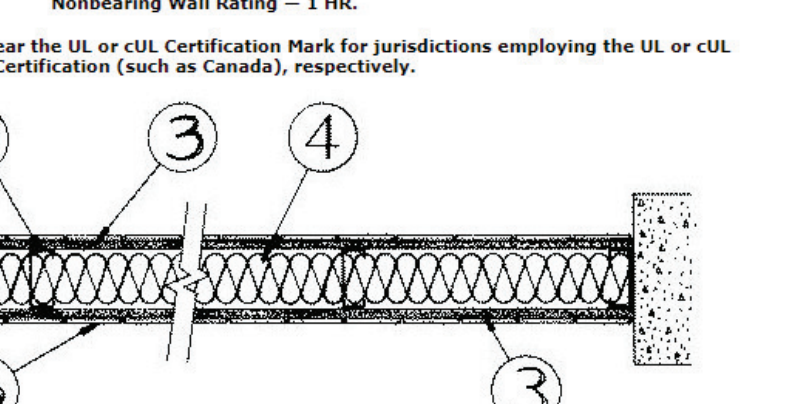
Design/System/Construction/Assembly Usage Disclaimer  
The Designer/Manufacturer shall be responsible for the particular requirements covering the installation and use of UL Certified products, equipment, systems, devices, and materials.

Authorities Having Jurisdiction should be consulted for use of the particular requirements covering the installation and use of UL Certified products, equipment, systems, devices, and materials.  
Fire resistance assemblies and products are developed by the design manufacturer and have been investigated by UL for compliance with applicable requirements. The published information should always describe every construction detail encountered in the field.  
When field issues arise, it is recommended the first contact for assistance be the technical service staff provided by the product manufacturer and/or a design engineer. Users of fire resistance assemblies are advised to consult the general Guide Information for each product category and each group of assemblies. The Guide Information includes specific construction alternate materials and alternate methods of construction.  
Only products which bear UL's Mark are considered Certified.

IXIIV - Fire Resistance Ratings - ANSI/UL 263 Certified for United States  
IXIUV - Fire Resistance Ratings - CAN/ULC-S101 Certified for Canada

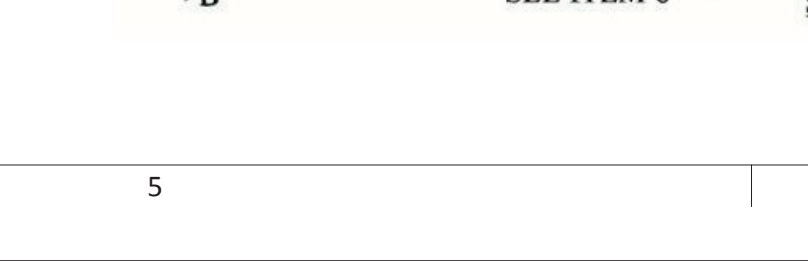
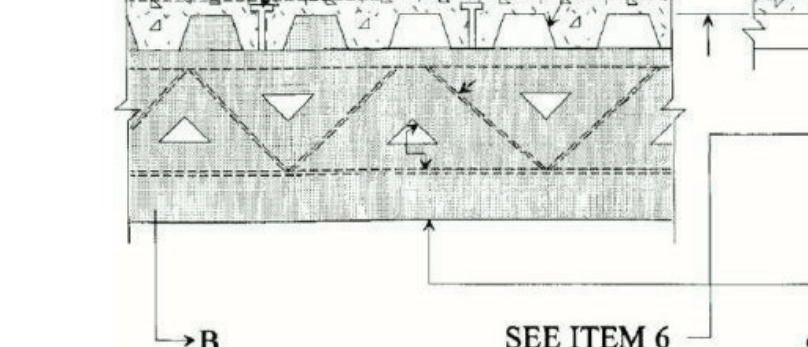
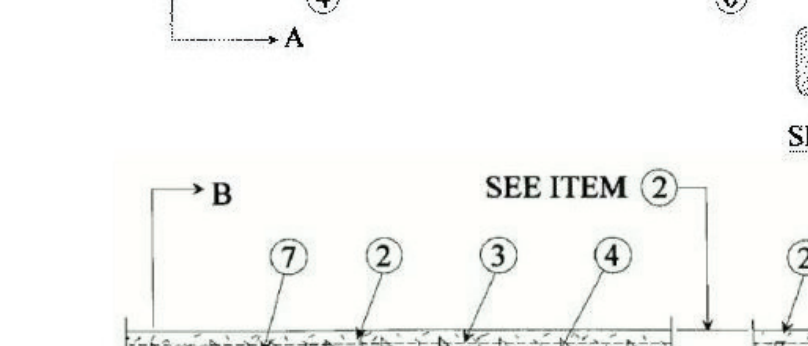
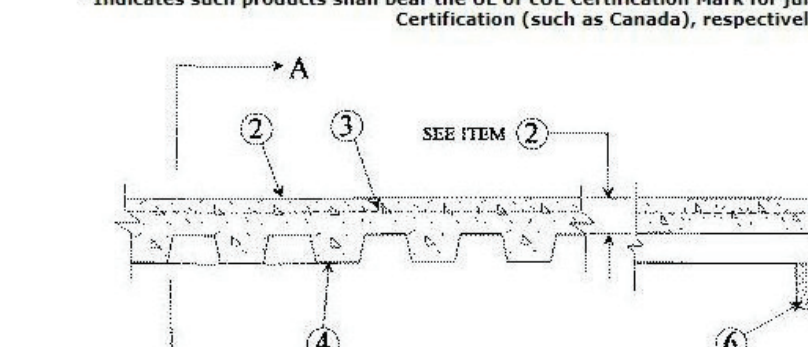
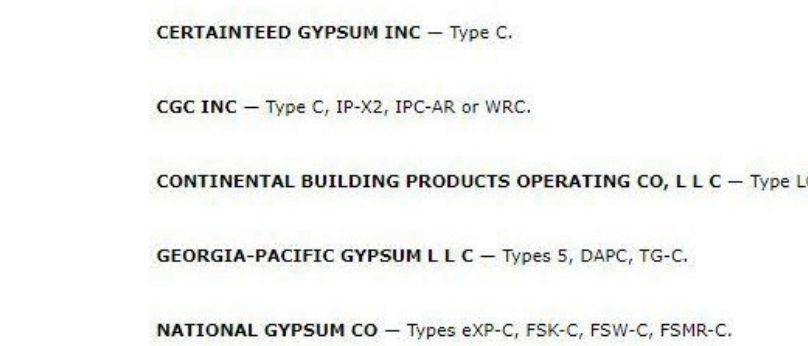
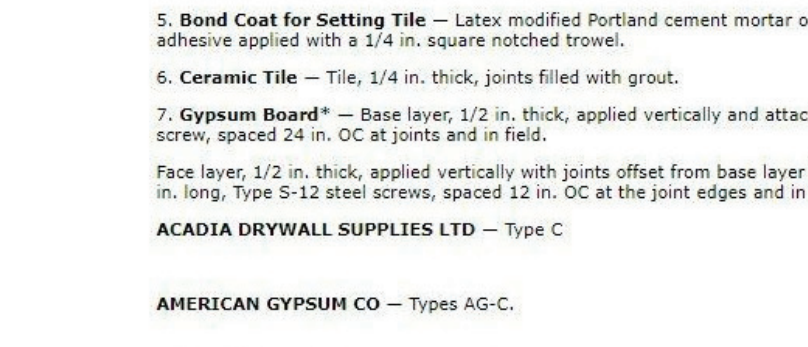
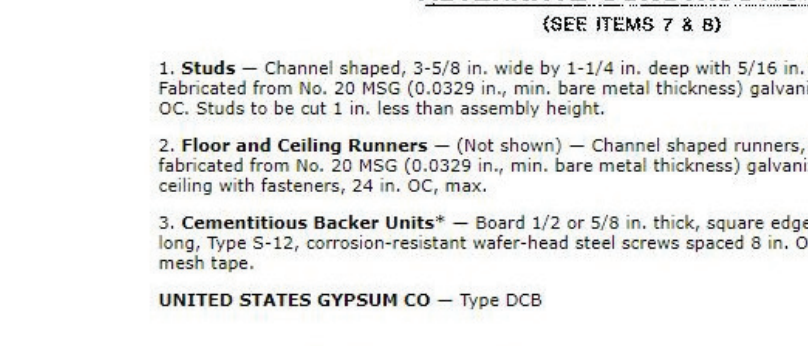
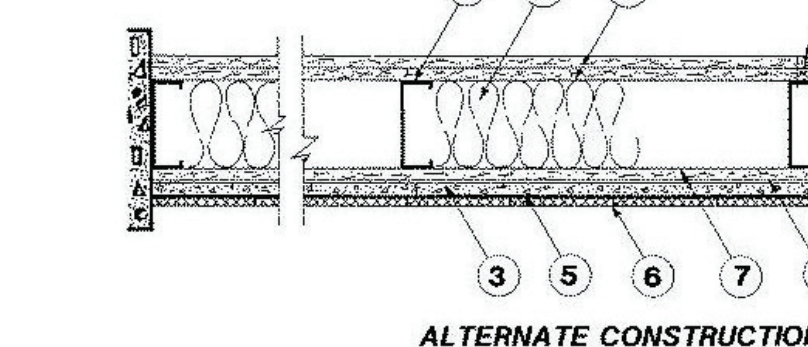
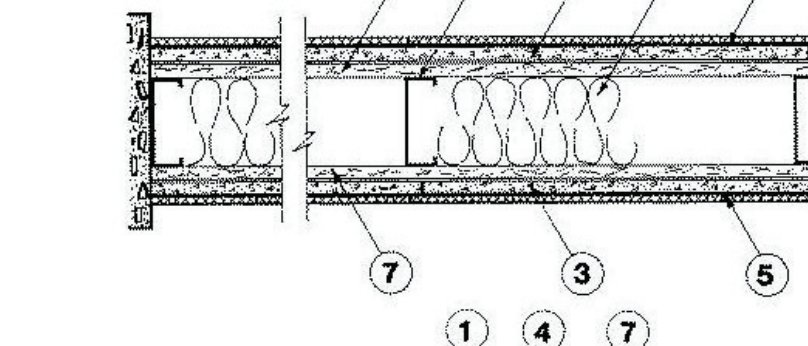
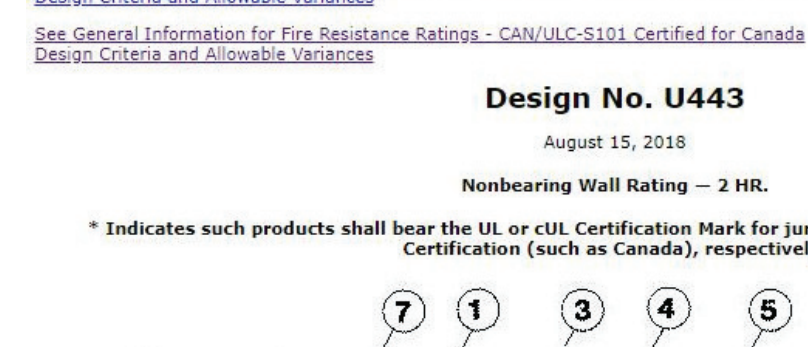
Design No. U442  
February 05, 2018  
Nonbearing Wall Rating - 1 HR

\* Indicates such products shall bear the UL or cUL Certification Mark for jurisdictions employing the UL or cUL Certification (such as Canada), respectively.



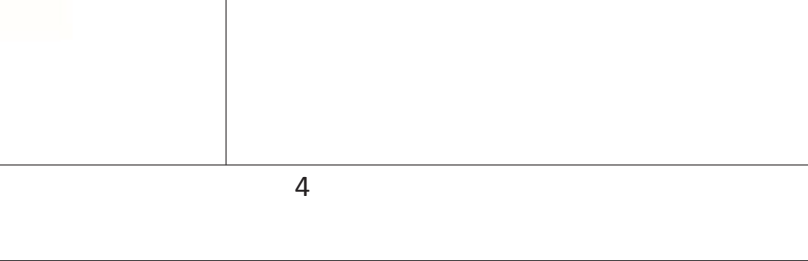
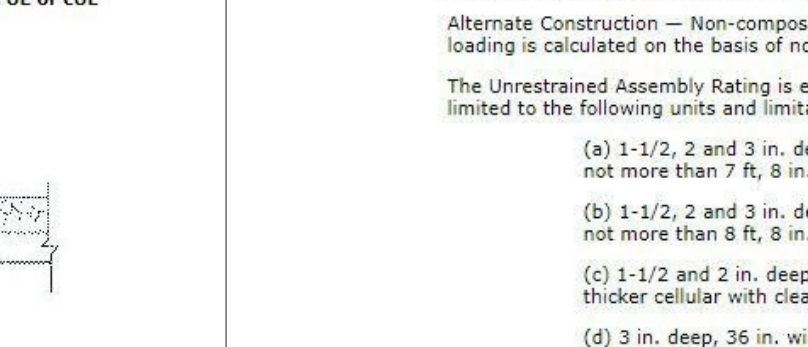
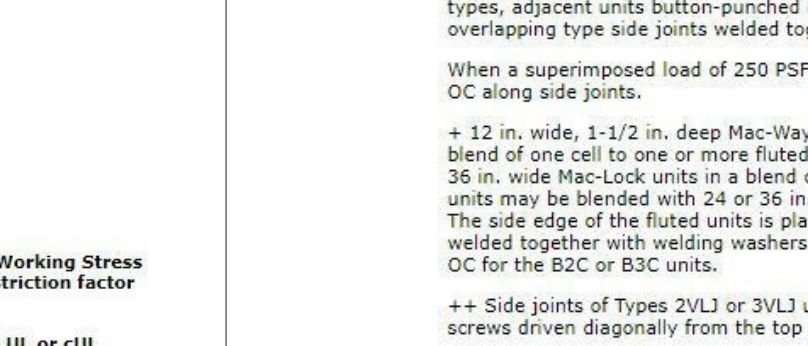
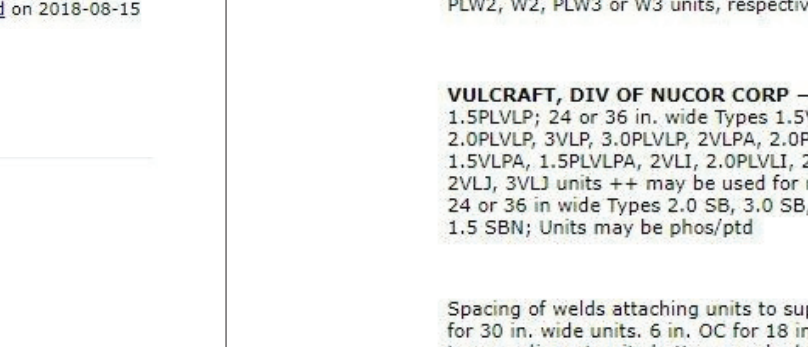
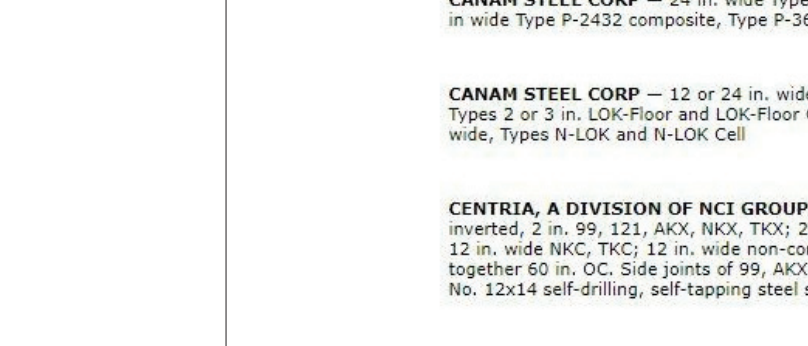
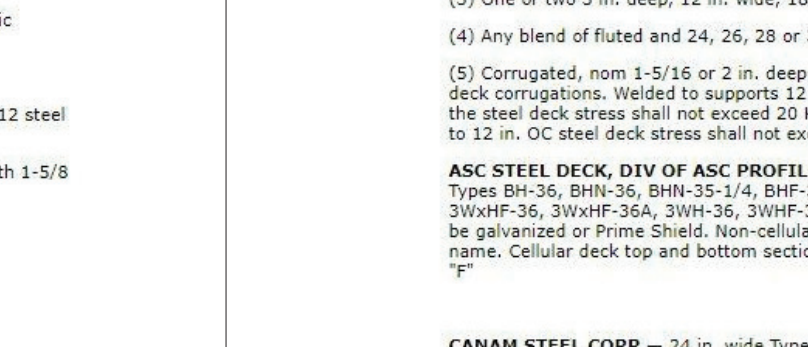
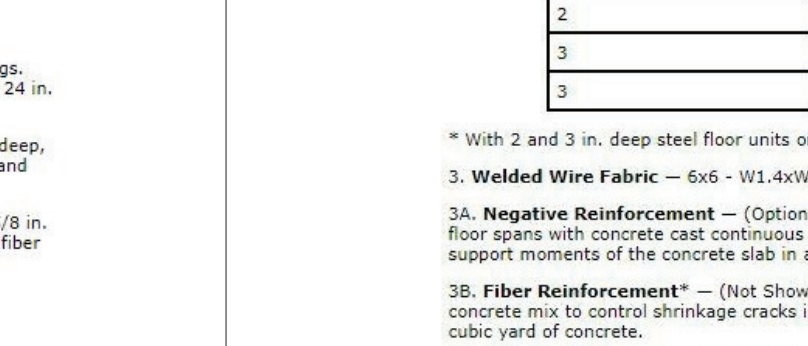
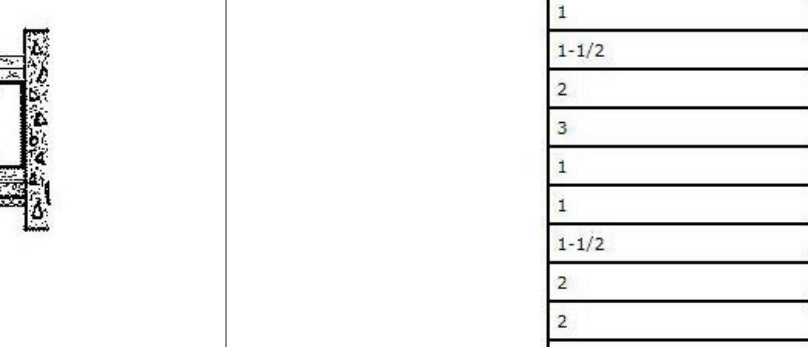
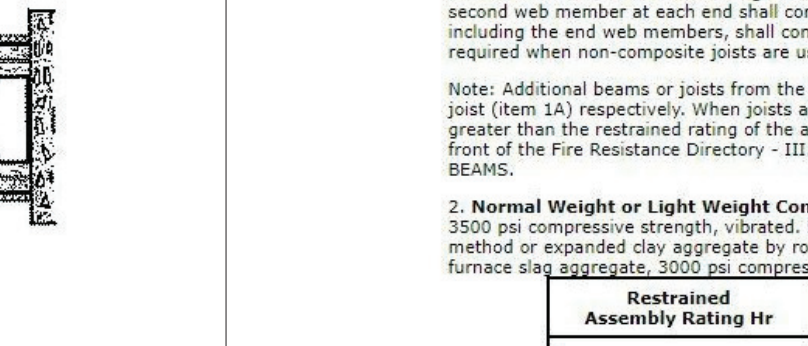
Design No. U443  
August 15, 2018

Nonbearing Wall Rating - 2 HR  
\* Indicates such products shall bear the UL or cUL Certification Mark for jurisdictions employing the UL or cUL Certification (such as Canada), respectively.



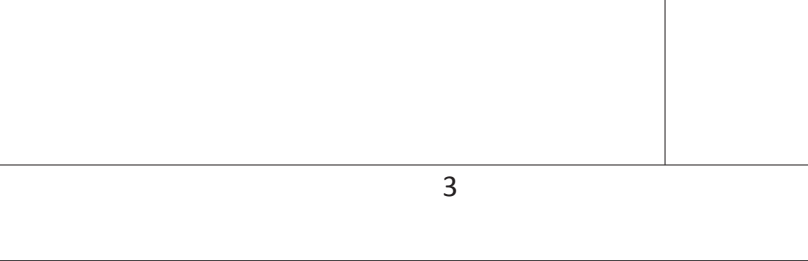
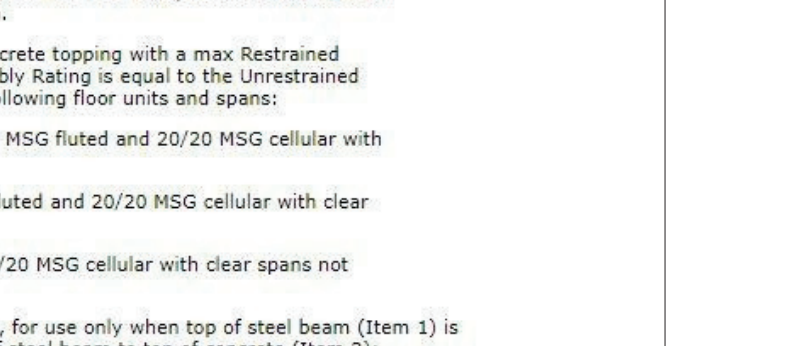
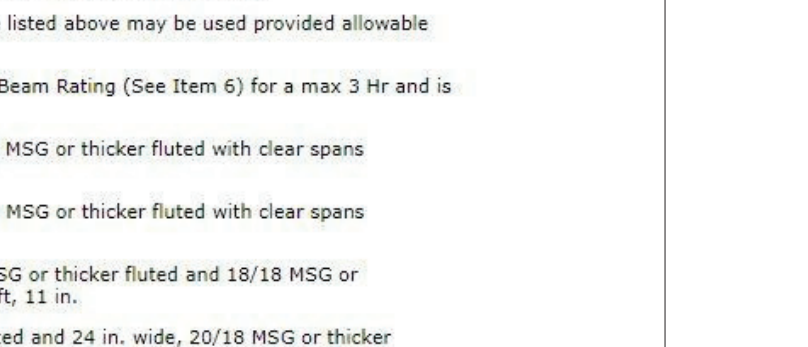
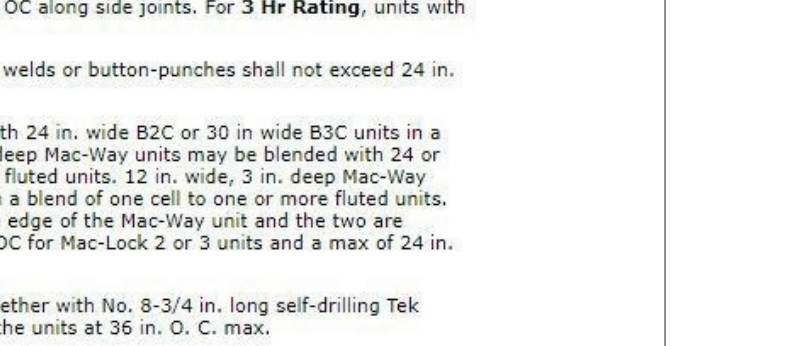
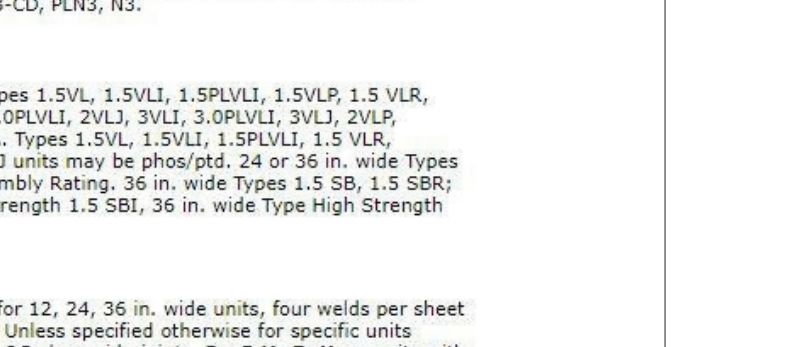
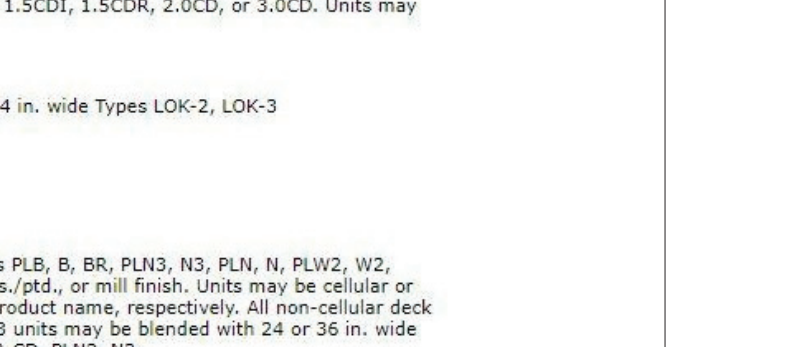
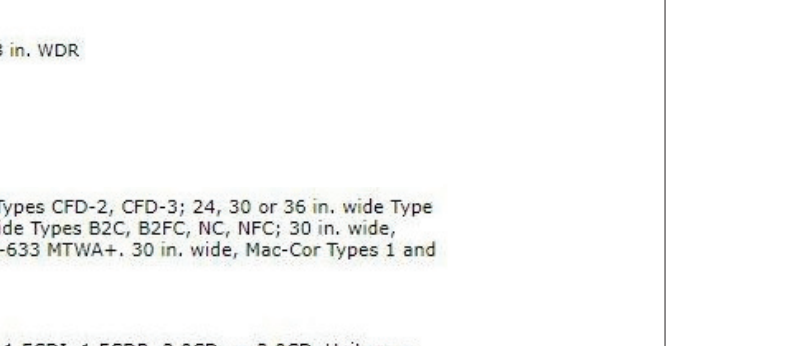
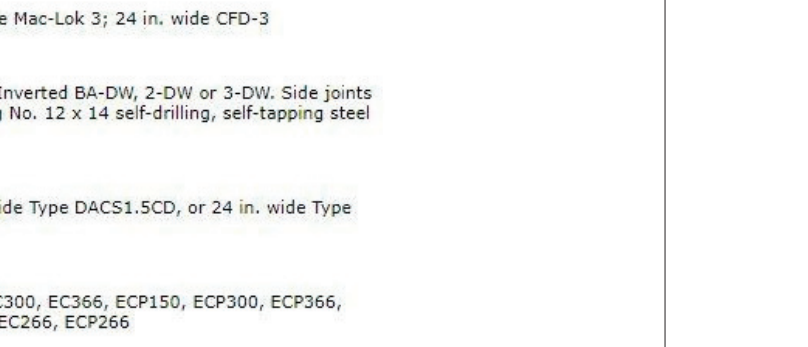
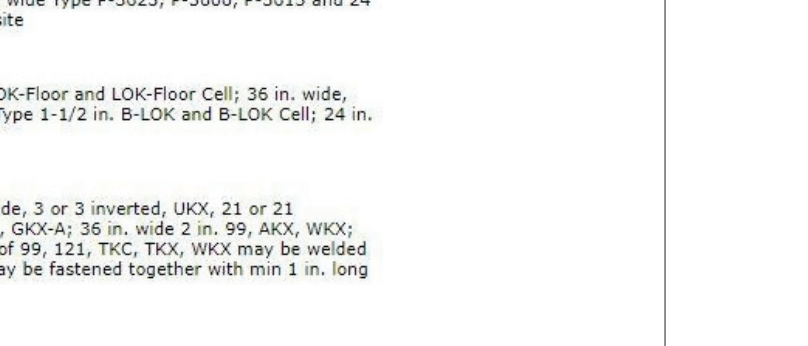
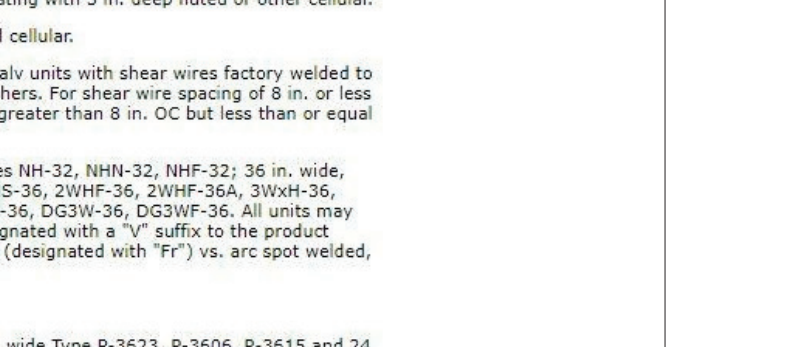
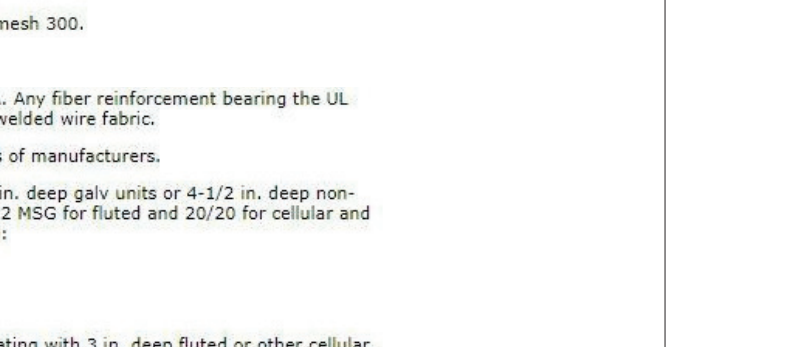
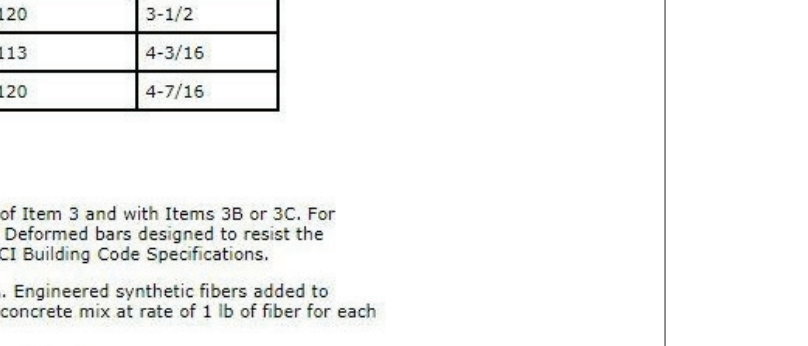
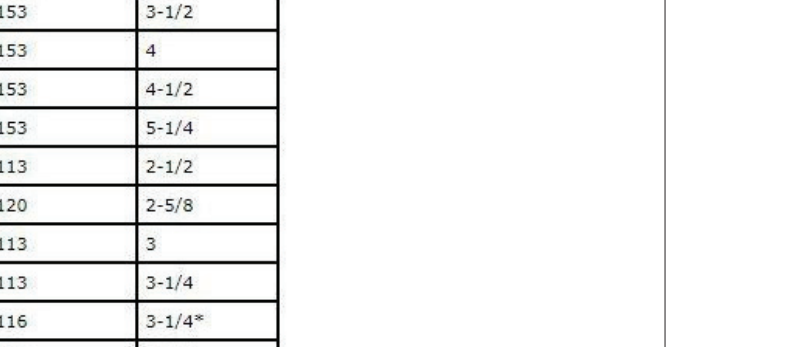
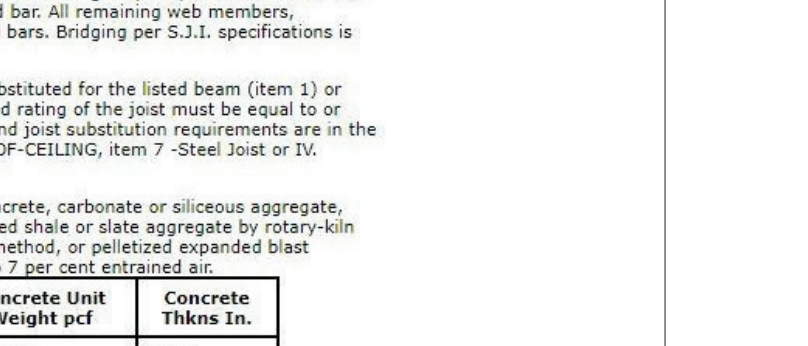
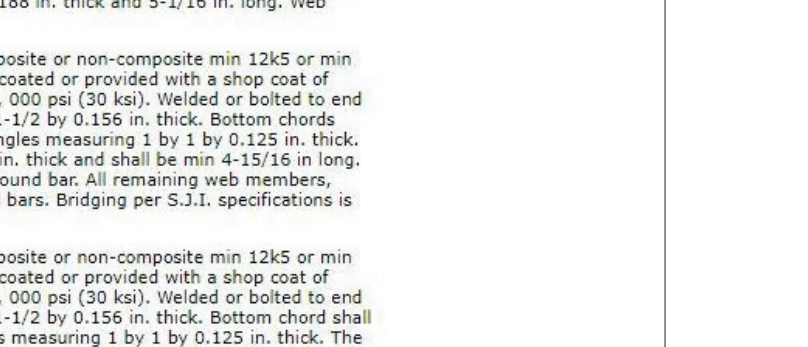
Design No. D902  
July 24, 2018

Restrained Assembly Rating - 1, 1-1/2, 2 and 3 Hr  
Unrestrained Assembly Rating - 0, 1, 1-1/2, 2 and 3 Hr  
Unrestrained Beam Rating - 1, 1-1/2, 2 and 3 Hr



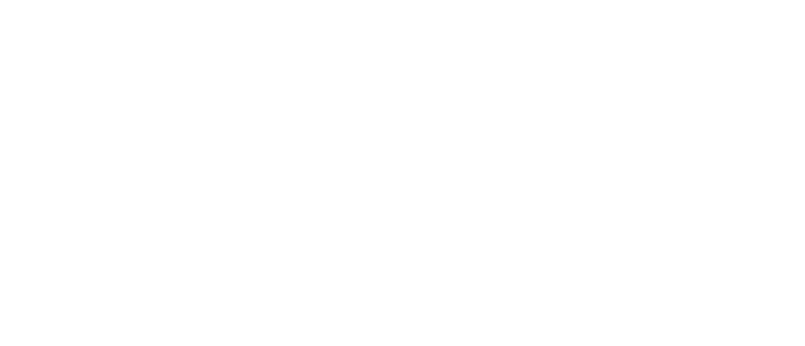
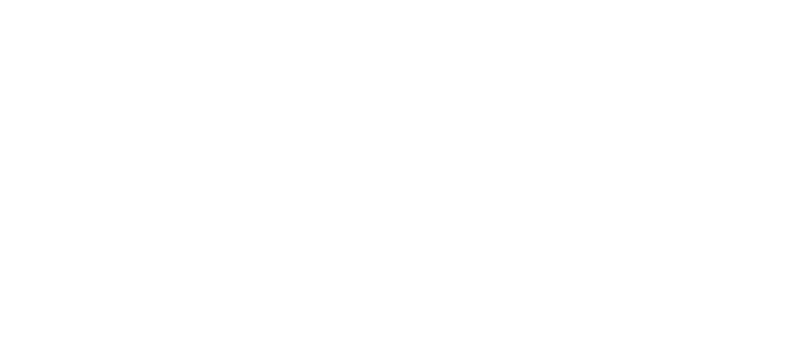
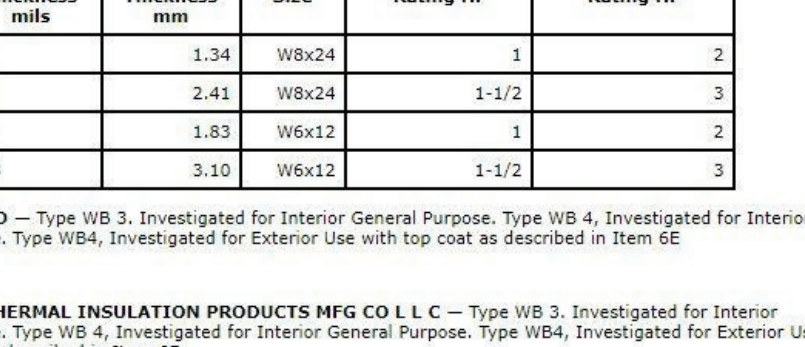
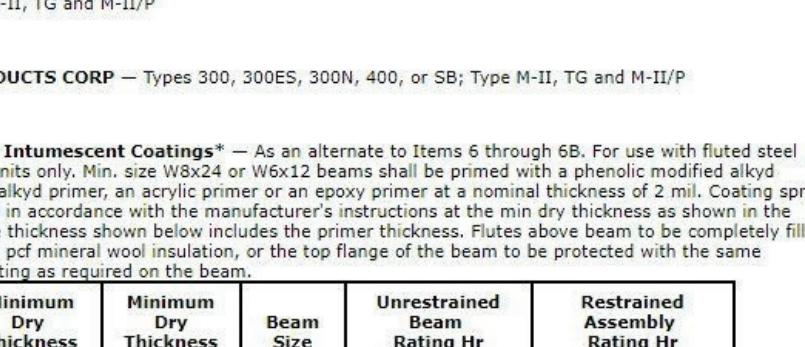
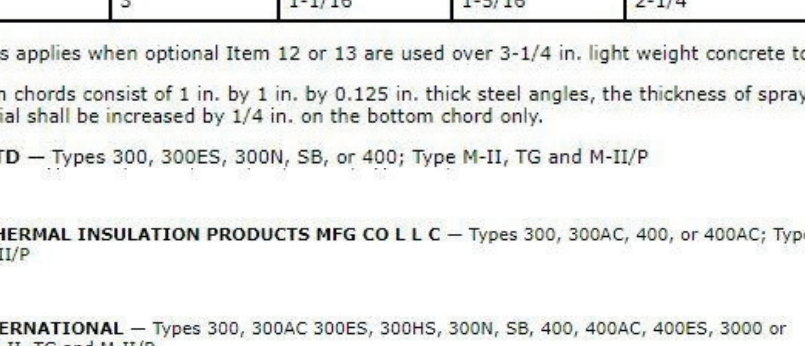
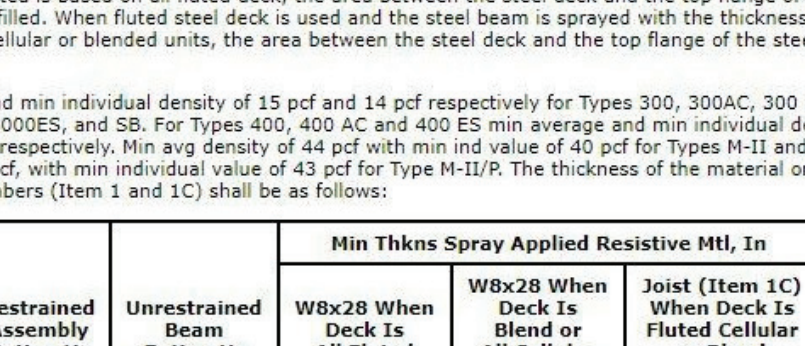
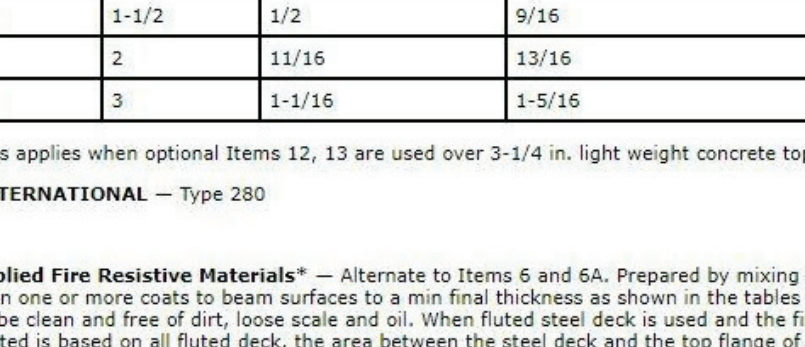
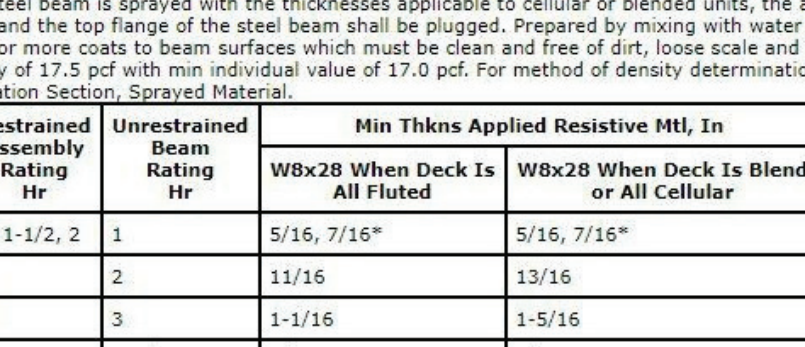
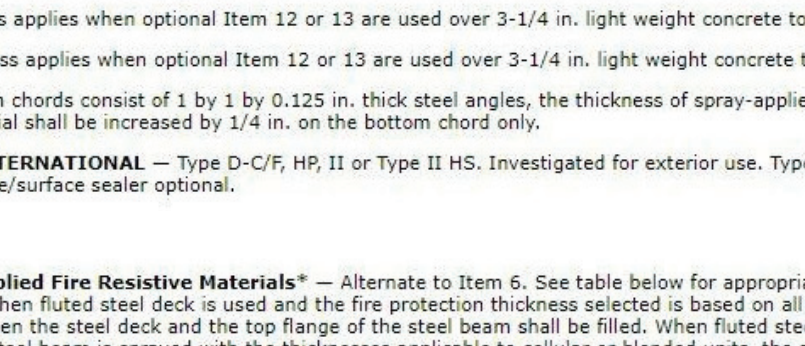
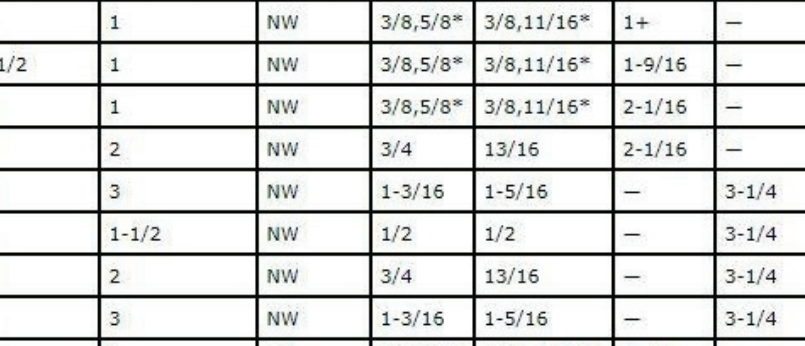
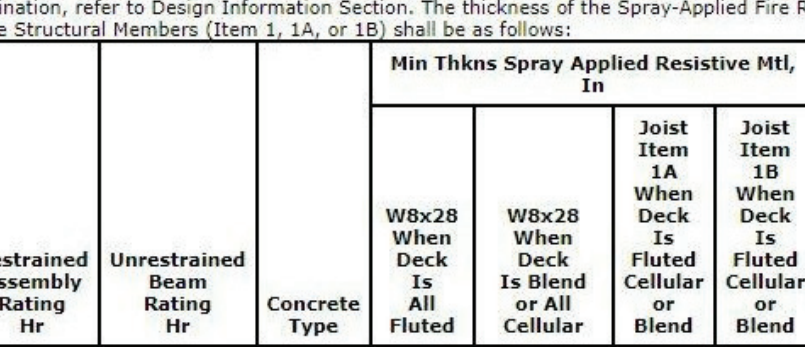
Design No. D902  
July 24, 2018

Restrained Assembly Rating - 1, 1-1/2, 2 and 3 Hr  
Unrestrained Assembly Rating - 0, 1, 1-1/2, 2 and 3 Hr  
Unrestrained Beam Rating - 1, 1-1/2, 2 and 3 Hr



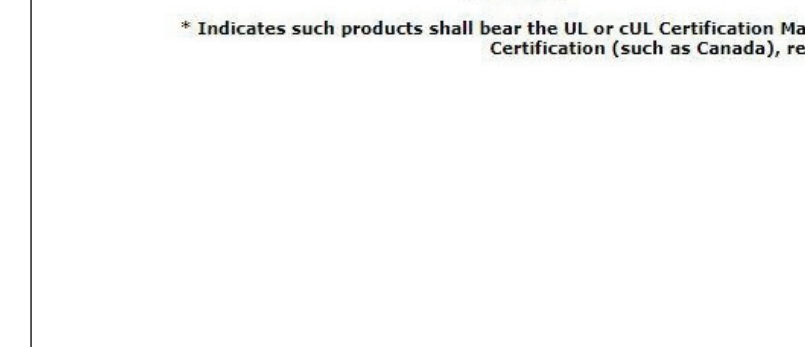
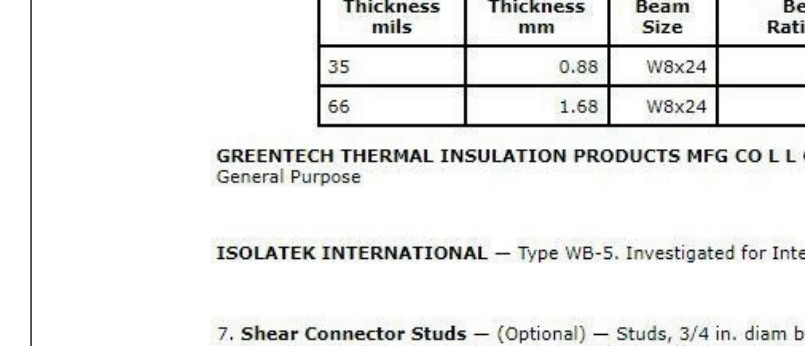
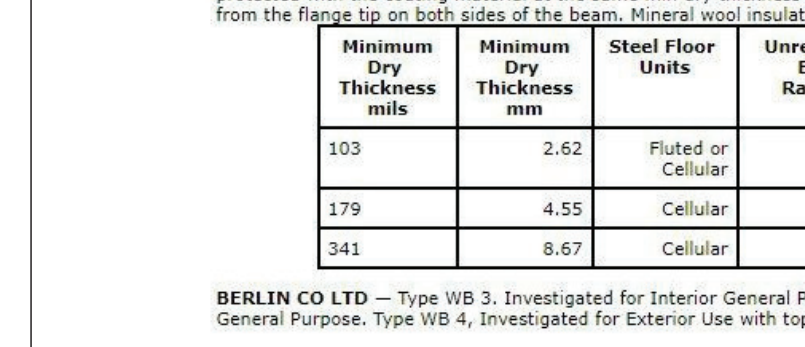
Design No. D902  
July 24, 2018

Restrained Assembly Rating - 1, 1-1/2, 2 and 3 Hr  
Unrestrained Assembly Rating - 0, 1, 1-1/2, 2 and 3 Hr  
Unrestrained Beam Rating - 1, 1-1/2, 2 and 3 Hr



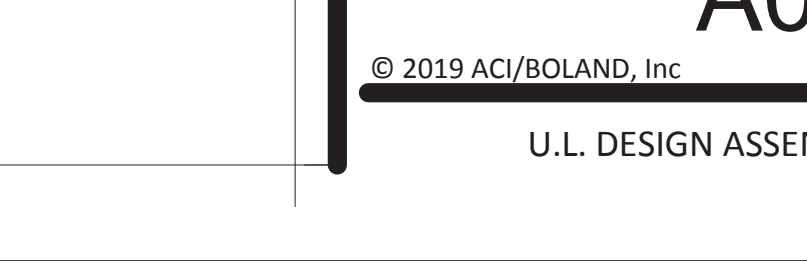
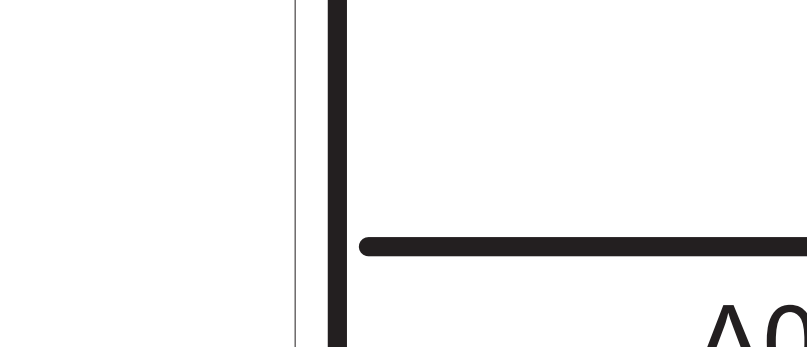
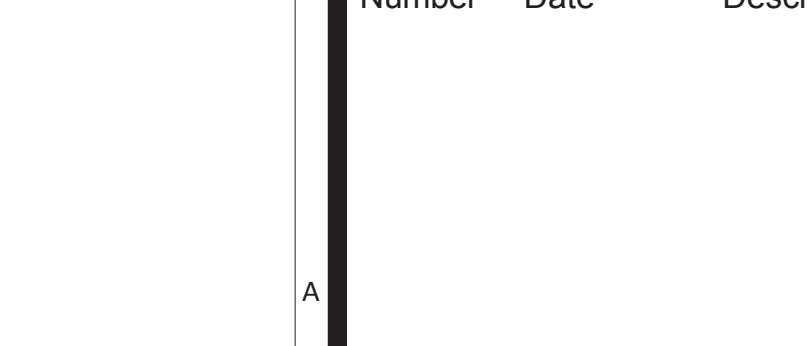
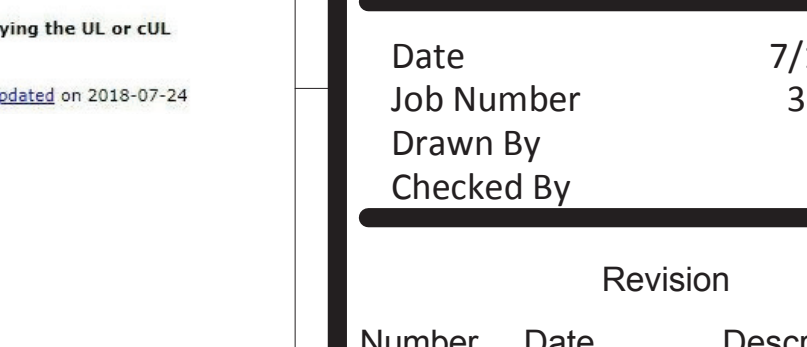
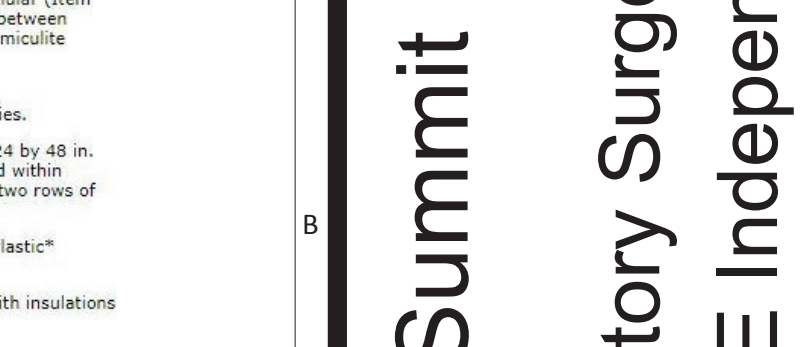
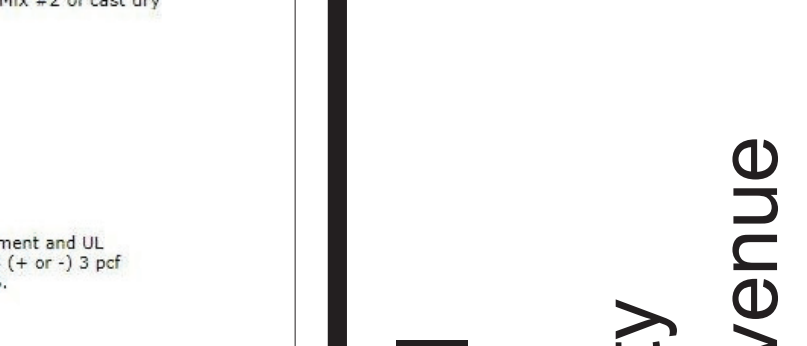
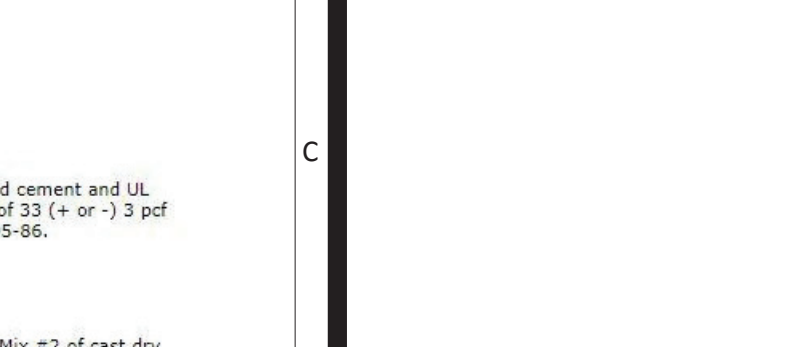
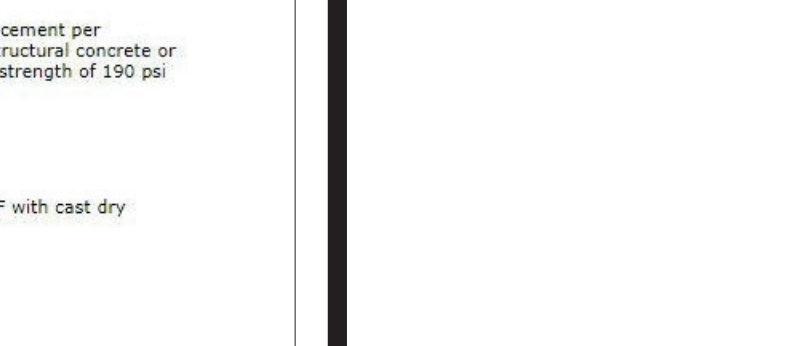
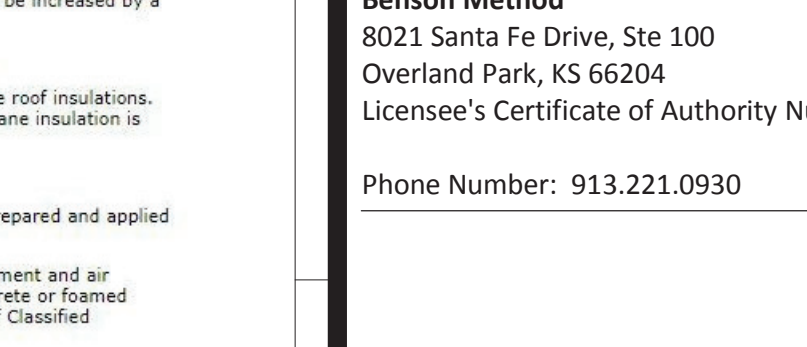
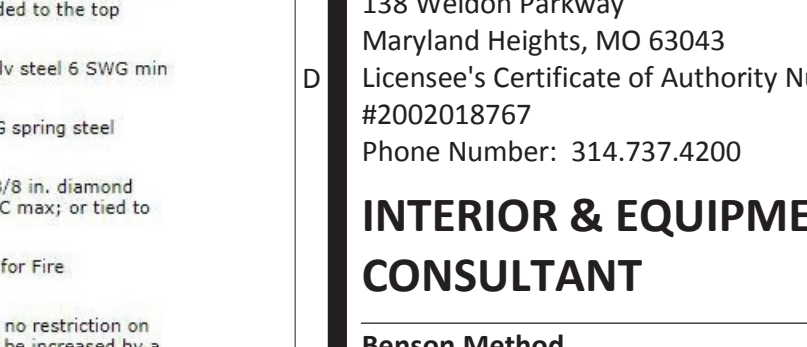
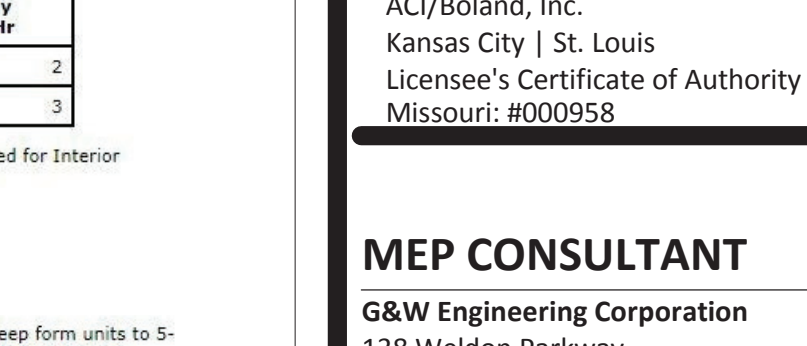
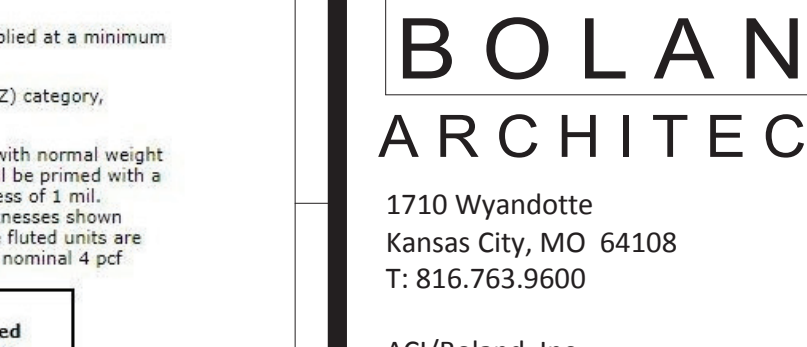
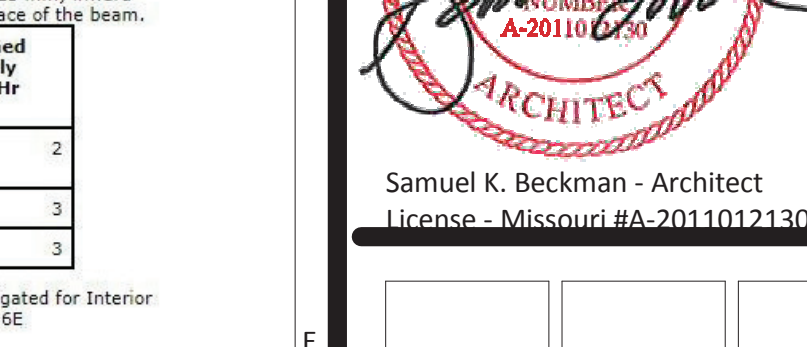
Design No. D902  
July 24, 2018

Restrained Assembly Rating - 1, 1-1/2, 2 and 3 Hr  
Unrestrained Assembly Rating - 0, 1, 1-1/2, 2 and 3 Hr  
Unrestrained Beam Rating - 1, 1-1/2, 2 and 3 Hr



Design No. D902  
July 24, 2018

Restrained Assembly Rating - 1, 1-1/2, 2 and 3 Hr  
Unrestrained Assembly Rating - 0, 1, 1-1/2, 2 and 3 Hr  
Unrestrained Beam Rating - 1, 1-1/2, 2 and 3 Hr



Samuel K. Beckman - Architect  
License - Missouri EA-2011012130



ACI/Boland, Inc.  
Kansas City | St. Louis  
Licensee's Certificate of Authority Number:  
Missouri: #000958

GMP CONSULTANT  
B&W Engineering Corporation  
138 Wendover Parkway  
Maryland Heights, MO 63043  
Licensee's Certificate of Authority Number:  
#D202018767  
Phone Number: 314.737.4200

INTERIOR & EQUIPMENT CONSULTANT  
Benson Method  
8021 Santa Fe Drive, Ste 100  
Overland Park, KS 66204  
Licensee's Certificate of Authority Number:  
#000958  
Phone Number: 913.221.0930

Lee's Summit Surgical  
Ambulatory Surgery Facility  
2801 NE Independence Avenue  
Lee's Summit, Missouri 64064

Date 7/1/2019  
Job Number 3-18243  
Drawn By BM  
Checked By AD

Revision  
Number Date Description

Revised  
Date Description

Revised  
Date Description

Revised  
Date Description

Revised  
Date Description

Revised  
Date Description

Revised  
Date Description

Revised  
Date Description

Revised  
Date Description

Revised  
Date Description

Revised  
Date Description

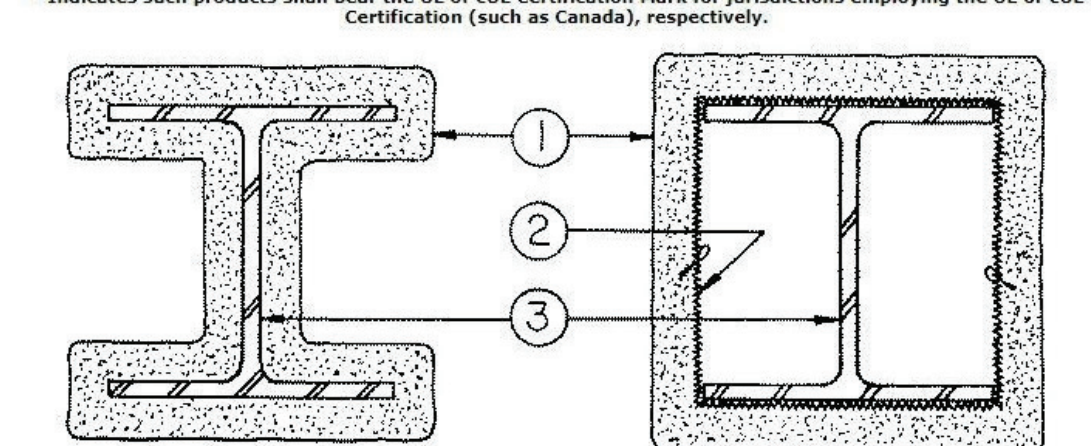
A0.8  
© 2019 ACI/BOLAND, Inc.  
U.L. DESIGN ASSEMBLIES



Design No. X772

October 26, 2017

Rating - 1, 1-1/2, 2, 3 and 4.



\* Indicates such products shall bear the UL or cUL Certification Mark for jurisdictions employing the UL or cUL Certification (such as Canada), respectively.

1. Spray-Applied Fire Resistive Materials - Applied by mixing with water and spraying in more than one coat...

Where: h = Fire resistance rating in hours (1 - 4 hr) R = Heated perimeter of steel column in inches W = Weight of steel column in lbs per foot

W/D = 0.33 to 0.62

As an alternate to the equation, the minimum thickness of Spray-Applied Fire Resistive Materials required for various fire resistance ratings of contour sprayed or boxed columns may be determined from the table below:

Table with columns: Min Col Size, W/D, 1 Hr, 1-1/2 Hr, 2 Hr, 3 Hr, 4 Hr. Lists various column sizes and their corresponding fire ratings.

As an alternate to the equation, the minimum thickness of Spray-Applied Fire Resistive Materials required for various fire resistance ratings of contour sprayed or boxed columns may be determined from the table below:

Table with columns: Min Col Size, W/D, 1 Hr, 1-1/2 Hr, 2 Hr, 3 Hr, 4 Hr. Lists various column sizes and their corresponding fire ratings.

Table with columns: Min Col Size, W/D, 1 Hr, 1-1/2 Hr, 2 Hr, 3 Hr, 4 Hr. Lists various column sizes and their corresponding fire ratings.

Table with columns: Min Col Size, W/D, 1 Hr, 1-1/2 Hr, 2 Hr, 3 Hr, 4 Hr. Lists various column sizes and their corresponding fire ratings.

Table with columns: Min Col Size, W/D, 1 Hr, 1-1/2 Hr, 2 Hr, 3 Hr, 4 Hr. Lists various column sizes and their corresponding fire ratings.

Table with columns: Min Col Size, W/D, 1 Hr, 1-1/2 Hr, 2 Hr, 3 Hr, 4 Hr. Lists various column sizes and their corresponding fire ratings.

Table with columns: Min Col Size, W/D, 1 Hr, 1-1/2 Hr, 2 Hr, 3 Hr, 4 Hr. Lists various column sizes and their corresponding fire ratings.

Table with columns: Min Col Size, W/D, 1 Hr, 1-1/2 Hr, 2 Hr, 3 Hr, 4 Hr. Lists various column sizes and their corresponding fire ratings.

Table with columns: Min Col Size, W/D, 1 Hr, 1-1/2 Hr, 2 Hr, 3 Hr, 4 Hr. Lists various column sizes and their corresponding fire ratings.

Table with columns: Min Col Size, W/D, 1 Hr, 1-1/2 Hr, 2 Hr, 3 Hr, 4 Hr. Lists various column sizes and their corresponding fire ratings.

Table with columns: Min Col Size, W/D, 1 Hr, 1-1/2 Hr, 2 Hr, 3 Hr, 4 Hr. Lists various column sizes and their corresponding fire ratings.

Table with columns: Min Col Size, W/D, 1 Hr, 1-1/2 Hr, 2 Hr, 3 Hr, 4 Hr. Lists various column sizes and their corresponding fire ratings.

Table with columns: Min Col Size, W/D, 1 Hr, 1-1/2 Hr, 2 Hr, 3 Hr, 4 Hr. Lists various column sizes and their corresponding fire ratings.

Table with columns: Min Col Size, W/D, 1 Hr, 1-1/2 Hr, 2 Hr, 3 Hr, 4 Hr. Lists various column sizes and their corresponding fire ratings.

XHDG - Perimeter-Fire-Containment Systems

See General Information for Perimeter-Fire-Containment Systems

System No. CW-S-1011

March 12, 2013

F Rating - 2 Hr

T Rating - 1/4 Hr

Integrity Rating - 2 Hr

Insulation Rating - 1/4 Hr

Linear Opening Width - 2-1/2 In. Max

L Rating At Ambient - Less Than 1 CFM/Lin Ft

Large table listing various steel studs and their fire ratings for different column sizes and wall thicknesses.

The thicknesses contained in the table below are applicable when the Spray-Applied Fire Resistive Materials applied to columns' flange type are reduced to one-half that shown in the table below:

Table with columns: Min Col Size, W/D, 1 Hr, 1-1/2 Hr, 2 Hr, 3 Hr, 4 Hr. Lists various column sizes and their corresponding fire ratings.

As an alternate to the equation, the min thickness of Spray-Applied Fire Resistive Materials Types 2-146, 2-146C, 2-146E, 2-156, 2-156T, 2-156T and 2-156C required for various fire resistance ratings of contours sprayed or boxed wide flange columns are shown in the table below:

Table with columns: Column Size In., 1 Hr, 1-1/2 Hr, 2 Hr, 3 Hr, 4 Hr. Lists various column sizes and their corresponding fire ratings.

As an alternate to the equation, the min thickness of Spray-Applied Fire Resistive Materials Types 2-146, 2-146C, 2-146E, 2-156, 2-156T, 2-156T and 2-156C required for various fire resistance ratings of contours sprayed or boxed wide flange columns are shown in the table below:

Table with columns: Column Size In., 1 Hr, 1-1/2 Hr, 2 Hr, 3 Hr, 4 Hr. Lists various column sizes and their corresponding fire ratings.

As an alternate to the equation, the min thickness of Spray-Applied Fire Resistive Materials Types 2-146, 2-146C, 2-146E, 2-156, 2-156T, 2-156T and 2-156C required for various fire resistance ratings of contours sprayed or boxed wide flange columns are shown in the table below:

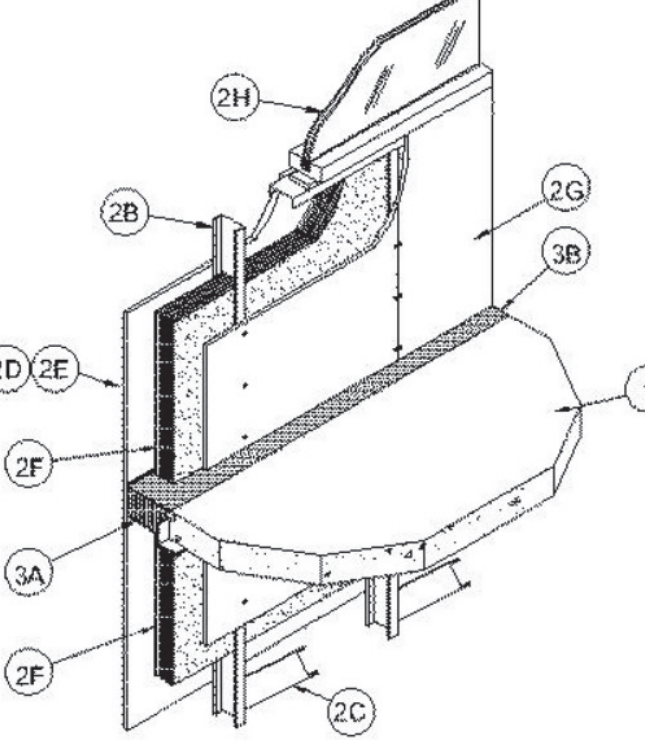
Table with columns: Column Size In., 1 Hr, 1-1/2 Hr, 2 Hr, 3 Hr, 4 Hr. Lists various column sizes and their corresponding fire ratings.

As an alternate to the equation, the min thickness of Spray-Applied Fire Resistive Materials Types 2-146, 2-146C, 2-146E, 2-156, 2-156T, 2-156T and 2-156C required for various fire resistance ratings of contours sprayed or boxed wide flange columns are shown in the table below:

Table with columns: Column Size In., 1 Hr, 1-1/2 Hr, 2 Hr, 3 Hr, 4 Hr. Lists various column sizes and their corresponding fire ratings.

As an alternate to the equation, the min thickness of Spray-Applied Fire Resistive Materials Types 2-146, 2-146C, 2-146E, 2-156, 2-156T, 2-156T and 2-156C required for various fire resistance ratings of contours sprayed or boxed wide flange columns are shown in the table below:

Table with columns: Column Size In., 1 Hr, 1-1/2 Hr, 2 Hr, 3 Hr, 4 Hr. Lists various column sizes and their corresponding fire ratings.



1. Floor Assembly - Min 4-1/2 in. thick reinforced lightweight or normal weight (100-150 pcf) structural concrete...

2. Curtain Wall Assembly - The curtain wall assembly shall incorporate the following construction features:

A. Mounting Angles - (Not Shown) - Min 3 in. long angles with one nom 4 in. leg for attachment to edge of floor assembly...

B. Steel Studs - C-shaped studs formed from min 0.034 in. thick (20 ga) galv steel. The steel studs shall be 3-1/2 in. to 6 in. wide by 1-1/4 in. deep with 5/16 in. wide stiffening flanges...

C. Steel Studs - Short lengths of steel stud (Item 2B) used to brace each steel stud against lateral movement. One end of stud bolted, screwed or welded to steel stud beneath plane of floor assembly...

D. Gypsum Board - One layer of nom 5/8 in. thick, exterior sheathing applied vertically and secured to each stud with 1 in. long, 0.142 in. diam. Type S-12 bugle head screws spaced 12 in. OC along the studs and tracks with 1-1/2 in. OC, Flange portion attached to the interior side of the gypsum board...

E. Cementitious Backer Units - As an alternate to the gypsum sheathing (Item 2D), min 1/2 in. or 5/8 in. thick square-edge boards attached to studs with 1-1/4 in. long corrosion resistant self-tapping water-head steel screws spaced 6 in. OC, joints covered with glass fiber mesh tape.

F. Batts and Blankets - Any glass fiber insulation bearing the UL Classification Marking as to fire resistance or surface burning characteristics, of a thickness to completely fill stud cavity.

G. Gypsum Board - One layer of nom 5/8 in. thick, 48 in. wide gypsum board applied vertically and secured to each stud with 1 in. long, 0.142 in. diam. Type S-12 bugle head screws spaced 12 in. OC along the studs and tracks with 1-1/2 in. OC, Flange portion attached to the interior side of the gypsum board...

H. Framed Window - Metal-framed window with min 1/4 in. thick lead-strengthened glass. 3/8 in. of window to be min 34 in. above top of floor slab. Top of window to be min 33 in. below bottom of floor slab.

I. Sliding Brick or Stucco - (Not Shown) - Aluminum sliding, steel sliding, brick veneer or stucco installed over gypsum sheathing or cementitious backer units and meeting the requirements of local code agencies. Brick veneer wall attached to studs with corrugated metal wall ties attached to each stud with steel screws.

3. Perimeter Fire Containment System - 3.1. Safing System - The safing system shall incorporate the following construction features:

A. Forming Material - Nom 4 pcf density mineral wool batt insulation. Batt sections to be cut to a min width of 4 in. and stacked to a thickness which is 25 percent greater than the width of clear gap between the gypsum sheathing and the edge of the concrete floor to attain a min 20 percent compression in the thickness direction. The forming material is compressed and inserted cut-edge-into linear gap between edge of floor slab and sheathing material such that its top surface is flush with the top surface of the floor assembly. Length of batt to be equal to or center spacing of steel studs such that it is friction-fitted between studs and mounting angles without seams. Additional pieces of mineral wool batt to be stuffed inside the channel of each steel stud throughout the thickness of the forming material.

ROCKWOOL MALAYSIA SDN BHD - SAFE

ROCKWOOL - SAFE

B. Fill, Void or Cavity Material - Min 1/16 in. thickness (dry) of fill material spray-applied over top of forming material and keeping min 1/2 in. into the top surface of the floor and onto the gypsum sheathing and steel studs.

GRABBER CONSTRUCTION PRODUCTS INC - GrabberGard EPS

\* Indicates such products shall bear the UL or cUL Certification Mark for jurisdictions employing the UL or cUL Certification (such as Canada), respectively.

Last Updated on 2013-03-12

Design/System/Construction/Assembly Usage Disclaimer

Authorities Having Jurisdiction should be consulted in all cases as to the particular requirements covering the installation and use of UL Certified products, equipment, system, devices, and materials.

When field issues arise, it is recommended the first contact for assistance be the technical service staff provided by the product manufacturer noted for the design. Users of fire resistance assemblies are advised to consult the general Guide Information for each product category and each group of assemblies. The Guide Information includes specifics concerning alternate materials and alternate methods of construction.

The appearance of a company's name or product in this database does not in itself assure that products so identified have been manufactured under UL's Follow-Up Service. Only those products bearing the UL Mark should be considered to be Certified and covered under UL's Follow-Up Service. Always look for the Mark on the product.

UL permits the reproduction of the material contained in the Online Certification Directory subject to the following conditions: 1. The Guide Information, Assemblies, Constructions, Designs, Systems, and/or Certifications (files) must be presented in their entirety and in a non-misleading manner, without any manipulation of the data (or drawings). 2. The statement 'Reprinted from the Online Certification Directory with permission from UL' must appear adjacent to the extracted material. In addition, the reprinted material must include a copyright notice in the following format: '© 2019 UL LLC.'

UL and the UL logo are trademarks of UL LLC © 2019 All Rights Reserved.

Design No. U418

October 11, 2017

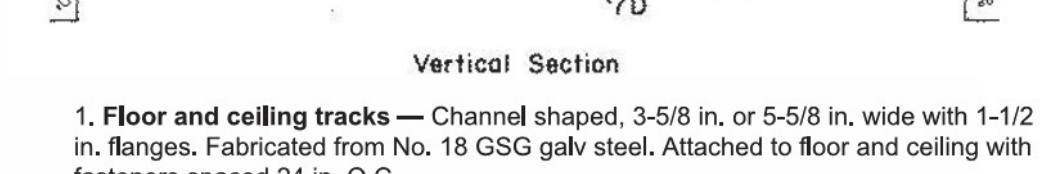
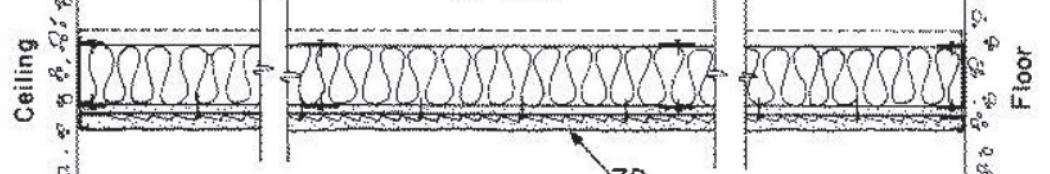
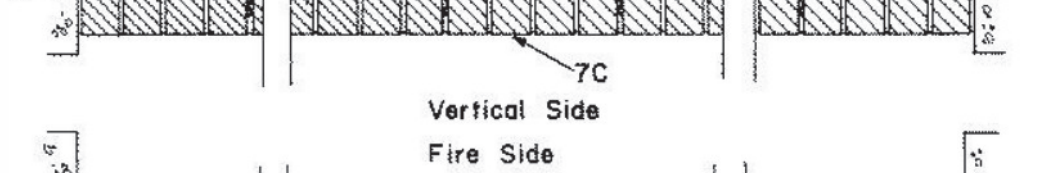
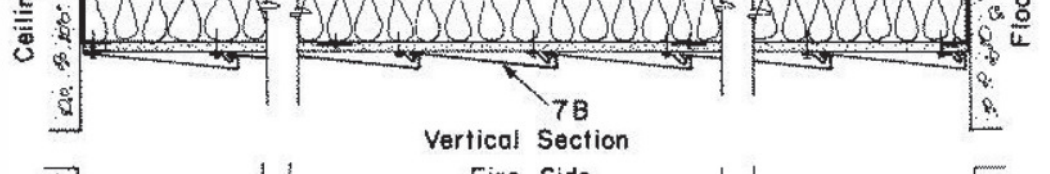
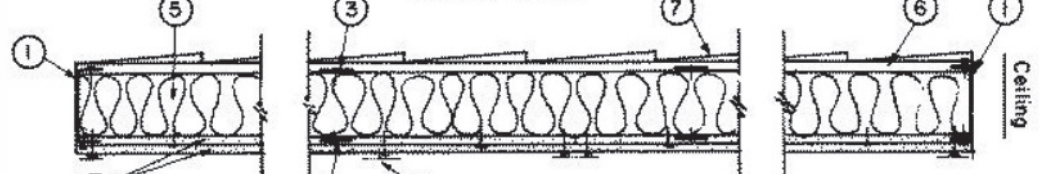
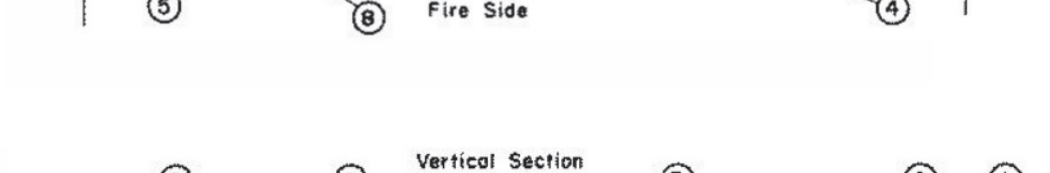
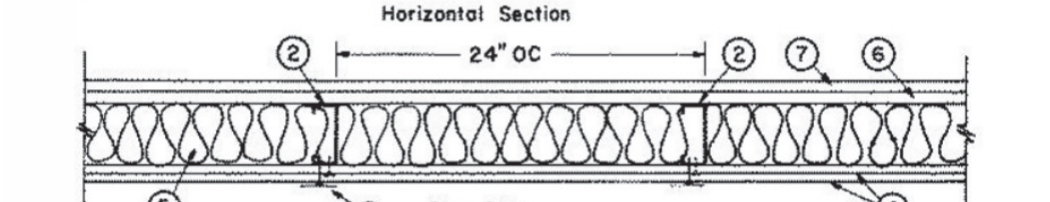
(Exposed to Fire on Interior Face Only)

Bearing Wall Rating - 3/4 Hr., 1 or 2 Hr.

(See Item 4)

This design was evaluated using a load design method other than the Limit States Design Method (e.g., Working Stress Design Method) for jurisdictions employing the Limit States Design Method, such as Canada, a load restriction factor shall be used - See Guide BXUV or BXUV7

\* Indicates such products shall bear the UL or cUL Certification Mark for jurisdictions employing the UL or cUL Certification (such as Canada), respectively.



1. Floor and ceiling tracks - Channel shaped, 3-5/8 in. or 5-5/8 in. wide with 1-1/2 in. flanges. Fabricated from No. 18 GSG galv steel. Attached to floor and ceiling with fasteners spaced 24 in. OC.

2. Steel Studs - C-shaped, fabricated from min 18. GSG (0.015 in. thick) galv steel, 3-1/2 in. or 5-1/2 in. wide with 1-1/2 in. flanges and 1/2 in. returns (stiffening flanges). Min yield strength 40,000 psi. See III, 12 of Report R7760-1, 2-2 dated Dec. 11, 1975 or III, 15 of Report R7760-3, 4-4 dated Aug. 23, 1976 for tables containing max allowable axial loads. Report III, available from U. S. Steel Corp., RM, 1846, 600 Grant St., Pittsburgh, PA 15230.

3. Steel Strapping - Flat stock, 1 in. wide, fabricated from No. 18 GSG galv steel. Located horizontally and attached to both sides of the studs at the third points using one No. 6-20 by 1/2 in. self-drilling steel screw at each intersection.

G. Gypsum Board - One layer of nom 5/8 in. thick, 48 in. wide gypsum board applied with joints centered over studs. Gypsum board secured to steel studs on interior surface of curtain wall with min 1 in. long bugle head steel screws spaced max 8 in. OC along the edges and max 12 in. OC in the field of each field of steel. Gypsum board installed to cover interior surface of wall above the top of the fill material (Item 3C) and below the forming material (Item 3B). See Gypsum Board (CKNX) category for names of Classified products and product types.

H. Framed Window - Metal-framed window with min 1/4 in. thick lead-strengthened glass. 3/8 in. of window to be min 34 in. above top of floor slab. Top of window to be min 33 in. below bottom of floor slab.

I. Sliding Brick or Stucco - (Not Shown) - Aluminum sliding, steel sliding, brick veneer or stucco installed over gypsum sheathing or cementitious backer units and meeting the requirements of local code agencies. Brick veneer wall attached to studs with corrugated metal wall ties attached to each stud with steel screws.

3. Perimeter Fire Containment System - 3.1. Safing System - The safing system shall incorporate the following construction features:

A. Forming Material - Nom 4 pcf density mineral wool batt insulation. Batt sections to be cut to a min width of 4 in. and stacked to a thickness which is 25 percent greater than the width of clear gap between the gypsum sheathing and the edge of the concrete floor to attain a min 20 percent compression in the thickness direction. The forming material is compressed and inserted cut-edge-into linear gap between edge of floor slab and sheathing material such that its top surface is flush with the top surface of the floor assembly. Length of batt to be equal to or center spacing of steel studs such that it is friction-fitted between studs and mounting angles without seams. Additional pieces of mineral wool batt to be stuffed inside the channel of each steel stud throughout the thickness of the forming material.

ROCKWOOL MALAYSIA SDN BHD - SAFE

ROCKWOOL - SAFE

B. Fill, Void or Cavity Material - Min 1/16 in. thickness (dry) of fill material spray-applied over top of forming material and keeping min 1/2 in. into the top surface of the floor and onto the gypsum sheathing and steel studs.

GRABBER CONSTRUCTION PRODUCTS INC - GrabberGard EPS

\* Indicates such products shall bear the UL or cUL Certification Mark for jurisdictions employing the UL or cUL Certification (such as Canada), respectively.

Last Updated on 2013-03-12

Design/System/Construction/Assembly Usage Disclaimer

Authorities Having Jurisdiction should be consulted in all cases as to the particular requirements covering the installation and use of UL Certified products, equipment, system, devices, and materials.

LOADMASTER SYSTEMS INC (View Classification) - CKNX.R11809

NATIONAL GYPSUM CO (View Classification) - CKNX.R3501

PABCO BUILDING PRODUCTS L L C, DBA PABCO GYPSUM (View Classification) - CKNX.R7094

PANEL REY SA (View Classification) - CKNX.R21786

SIAM GYPSUM INDUSTRY (SARABURI) CO LTD (View Classification) - CKNX.R1262

THAI GYPSUM PRODUCTS PCL (View Classification) - CKNX.R27517

UNITED STATES GYPSUM CO (View Classification) - CKNX.R1319

USG BORAL DRYWALL SFF LLC (View Classification) - CKNX.R38438

USG MEXICO S A DE C V (View Classification) - CKNX.R16089

4A. Gypsum Board - (As an alternate to Item 4) - 5/8 in. thick, 4 ft. wide, paper surfaced applied vertically only over gypsum runner tracks with 1 in. long, 0.142 in. diam. Type S-12 bugle head screws spaced 12 in. OC along the studs and tracks with 1-1/2 in. OC, Flange portion attached to the interior side of the gypsum board.

NATIONAL GYPSUM CO - SoundBreak XP Type X Gypsum Board

4B. Gypsum Board - (As an alternate to Items 4 through 4A) - Nominal 5/8 in. thick, 4 ft. wide panels, applied vertically and secured as described in Item 4. PABCO BUILDING PRODUCTS L L C, DBA PABCO GYPSUM - Type QuietRock ES.

4C. Gypsum Board - (As an alternate to Item 4) - Type F5W in Item 4) - Nom. 5/8 in. thick gypsum panels applied vertically or horizontally. Two layers of 5/8 in. for every single layer of 5/8 in. gypsum board described in Item 4. Horizontal joints on layer 1 shall be staggered. Inner layer of each double 5/8 in. layer attached with fasteners, as described in Item 4, spaced 24 in. OC. Outer layer of each double 5/8 in. layer attached per Item 4. NATIONAL GYPSUM CO - Type FSXV.

4D. Wall and Partition Facings and Accessories - (As an alternate to Items 4 through 4B) - Nominal 5/8 in. thick, 4 ft. wide panels, applied vertically and secured as described in Item 4. PABCO BUILDING PRODUCTS L L C, DBA PABCO GYPSUM - Type QuietRock S27.

5. Batts and Blankets - 3-1/2 in. thick, 2 ft. wide, glass fiber or mineral wool batts, installed between each stud to fill the wall cavity. CERTAINTED CORP

JOHNS MANVILLE

KNAUF INSULATION LLC

MAKSON INSULATION INC

OWENS CORNING

ROCKWOOL - Type AFB

6. Gypsum Sheathing - One layer of nominal 1/2 in. thick exterior sheathing, applied vertically and secured to each stud with 1 in. long, 0.142 in. diam. Type S-12 bugle head screws spaced 12 in. OC along the studs and tracks with 1-1/2 in. OC, Flange portion attached to the interior side of the gypsum board.

7. Exterior Facings -

7A. Aluminum Siding - Horizontal lap type 9 in. wide fabricated from 0.019 in. thick or 0.024 in. thick painted aluminum. Interior face of 0.019 in. thick siding lined with 3/8 in. thick unbranded insulation material. Attached to the studs with 1-1/8 in. long, 0.118 in. diam steel screws spaced 9 in. OC along the studs. A starter strip to be fastened to floor runner with 0.118 in. diam screws spaced 12 in. OC.

7B. Steel Siding - Same description as above (No. 17 GSG) gauge 0.017 in. thick. 7C. Brick Veneer - Any type 4 in. wide brick. Metal ties used as every fourth course spaced 24 in. OC horizontally. Fastened to steel studs through gypsum sheathing with one No. 6-20 steel screw per tie. One inch air space provided between veneer and gypsum sheathing.

7D. Stucco - Portland cement type - 3/4 in. min thickness. Metal lath or mesh base attached to studs with No. 6-20 steel screws. T-Nails or staples approved by local building codes. Spaced 6 in. OC max and driven through gypsum sheathing.

7E. Fiber-Cement Siding - (Not Shown) - Fiber-cement exterior sidings including smooth and patterned panels of lap siding.

7F. Building Units - (Not Shown) - 3 in. thick, 18 x 24 in. cellular glass blocks, applied to the gypsum sheathing (Item 6) with PC 88 adhesive or fastened with F anchors spaced a maximum 24 in. OC. For F anchors fastened to framing members with 1-1/4 in. long RS 85 wall screw. PITTSBURGH CORNING CORP - Type FoamGlas

8. Joint Tape and Compound - Vinyl or casing, dry or premixed joint compound applied in two coats to joints and screw heads. Perforated paper tape, 2 in. wide, embedded in first layer of compound over all joints.

9. Furring Channels - (Optional, not shown, for single or double layer systems) - Resilient furring channels fabricated from min 25 GSG corrosion-protected steel, spaced vertically a max of 24 in. OC. Flange portion attached to each intersecting stud with 1/2 in. long Type S-12 steel screws.

\* Indicates such products shall bear the UL or cUL Certification Mark for jurisdictions employing the UL or cUL Certification (such as Canada), respectively.

Last Updated on 2017-10-11

Design/System/Construction/Assembly Usage Disclaimer

Authorities Having Jurisdiction should be consulted in all cases as to the particular requirements covering the installation and use of UL Certified products, equipment, system, devices, and materials.

Fire resistance assemblies and products are developed by the design submitter and have been investigated by UL for compliance with applicable requirements. The published information cannot always address every construction nuance encountered in the field.

When field issues arise, it is recommended the first contact for assistance be the technical service staff provided by the product manufacturer noted for the design. Users of fire resistance assemblies are advised to consult the general Guide Information for each product category and each group of assemblies. The Guide Information includes specifics concerning alternate materials and alternate methods of construction.

Only products which bear UL's Mark are considered Certified.

The appearance of a company's name or product in this database does not in itself assure that products so identified have been manufactured under UL's Follow-Up Service. Only those products bearing the UL Mark should be considered to be Certified and covered under UL's Follow-Up Service. Always look for the Mark on the product.

UL permits the reproduction of the material contained in the Online Certification Directory subject to the following conditions: 1. The Guide Information, Assemblies, Constructions, Designs, Systems, and/or Certifications (files) must be presented in their entirety and in a non-misleading manner, without any manipulation of the data (or drawings). 2. The statement 'Reprinted from the Online Certification Directory with permission from UL' must appear adjacent to the extracted material. In addition, the reprinted material must include a copyright notice in the following format: '© 2019 UL LLC.'

UL and the UL logo are trademarks of UL LLC © 2019 All Rights Reserved.

AMERICAN GYPSUM CO (View Classification) - CKNX.R14196

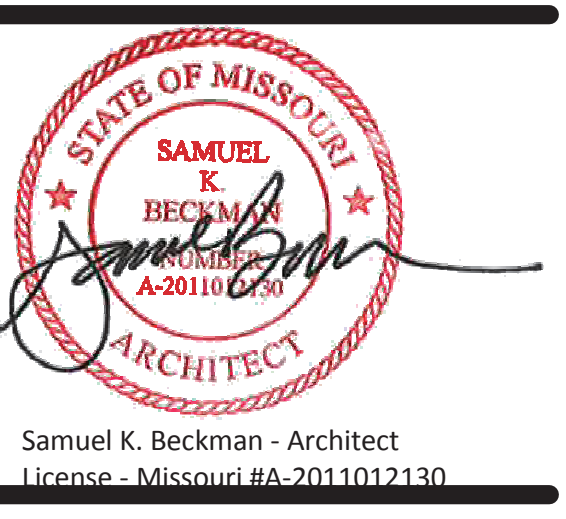
BEJING NEW BUILDING MATERIALS PUBLIC LTD CO (View Classification) - CKNX.R19374

CERTAINTED GYPSUM INC (View Classification) - CKNX.R3660

CGC INC (View Classification) - CKNX.R19571

CONTINENTAL BUILDING PRODUCTS OPERATING CO, L L C (View Classification) - CKNX.R18482

GEORGIA-PACIFIC GYPSUM L L C (View Classification) - CKNX.R2717



Samuel K. Beckman - Architect License - Missouri EA-2011012130

ACI BOLAND ARCHITECTS 1710 Wyandotte Kansas City, MO 64108 T: 816.763.9600

ACI/Boland, Inc. Kansas City, St. Louis Licensee's Certificate of Authority Number: Missouri: #000958

M&P CONSULTANT G&M Engineering Corporation 138 Weldon Parkway Maryland Heights, MO 63043 Licensee's Certificate of Authority Number: #2002018767 Phone Number: 314.737.4200

INTERIOR & EQUIPMENT CONSULTANT Benson Method 8021 Santa Fe Drive, Ste 100 Overland Park, KS 66204 Licensee's Certificate of Authority Number: Phone Number: 913.221.0930

Lee's Summit Surgical Ambulatory Surgery Facility 2801 NE Independence Avenue Lee's Summit, Missouri 64064

Date 7/1/2019

Job Number 3-18243

Drawn By Author

Checked By Checker

Revision

Number Date Description

U.L. DESIGN ASSEMBLIES

© 2019 ACI/BOLAND, Inc