

GENERAL INFORMATION

LOCATION: 180 NW Oldham Pkwy  
Lee's Summit, MO 64081

REASON FOR SUBMITTAL: RENOVATION

PROJECT DESCRIPTION

Single story renovation of an existing retail facility. The proposed new use will be an A1 Assembly for a small theater group.

APPLICABLE CODES - LEE'S SUMMIT

2018 - International Building Code  
2018 - International Mechanical  
2018 - International Plumbing Code  
2018 - International Fuel Gas Code  
2018 - International Energy Conservation Code  
2016 - NFPA 13  
2016 - NFPA 72

2017 - NFPA 70 (NEC)  
2018 - International Fire Code  
Kansas Fire Prevention Code  
2010 ADA Standards  
Kansas State Boiler Code  
K.S.A. 44-913 et seq

OCCUPANCY/ STRUCTURAL CLASSIFICATION

Occupancy Classification: A1

Construction Type: II-B (Non-Sprinklered)

The building has 1 story. The primary structure is constructed of steel. Exterior walls are constructed of metal panel/metal framing. The interior walls are of constructed of GB on metal framing.

BUILDING HEIGHTS AND AREAS

Basic Allowable

Section 506.2

Total GSF

= 3,470 sq. ft.

Type IIB Assembly. 9,500 sf total allowable area permitted.

1st Floor

= 3,470 sq. ft.

Roof Access

= Non occ

ACTUAL GROSS SQUARE FOOTAGE:

3,470 GSF, 1 story

OCCUPANCY TYPE

A3

GENERAL BUILDING LIMITATIONS

II-B

Section 602

STRUCTURAL FIRE RATINGS

Table 601

Structural frame including columns, girders & trusses:

0

Bearing exterior walls:

0

Bearing interior walls:

0

Nonbearing exterior walls & partitions:

0

Nonbearing interior walls & partitions:

0

Floor construction including supporting beams & joists:

0

Roof construction including supporting beams & joists:

0

ACTIVE LIFE SAFETY SYSTEMS:

Smoke Detection

Required/Provided: Per NFPA 72

Exit Signs:

Required/Provided: Provided

Emergency Lights:

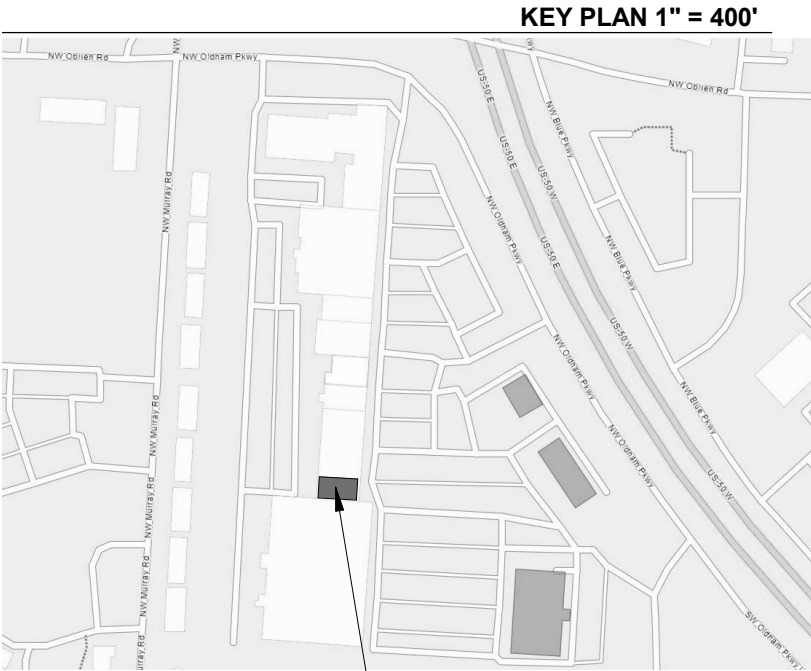
Required/Provided: Provided

Fire Extinguishers:

Required/Provided: Per NFPA 10

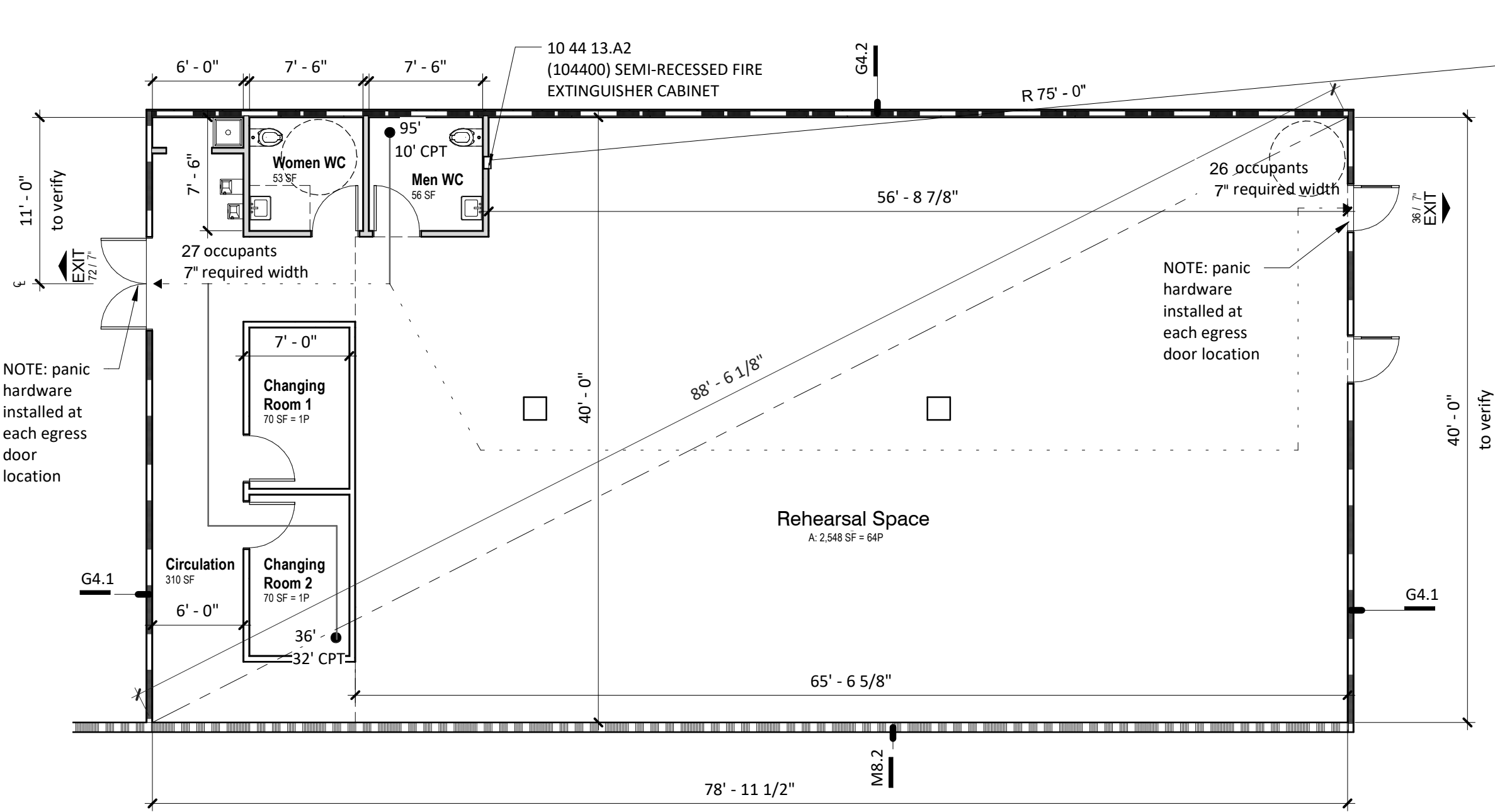
IMPORTANT - ANY DEVIATIONS FROM THIS DOCUMENT MAY RESULT IN THE DELAY OF ISSUING THE CERTIFICATE OF OCCUPANCY. CHANGES AFFECTING THIS CODE FOOTPRINT SHALL BE DOCUMENTED BY THE CONSULTANT AND APPROVED BY THE AGENCIES BELOW	
Summit Theatre Group	DATE
Lee Summit Permit	DATE

DATE - 12/30/2020  
REFERENCED SHEET - A1



Occupant Load Schedule - Working					
Number	Name	Area	Occupancy Use	Occupant Load Factor	Max Occupancy
101	LAB SPACE	2,548 SF	LAB SPACE	50 SF	51
102	Circulation	310 SF			
103	Changing Room 1	70 SF	support	200 SF	1
104	Changing Room 2	70 SF	support	200 SF	1
105	Women WC	53 SF	* NON-SIMULTANEOUS USE COMMON AREA	0 SF	
106	Men WC	56 SF	* NON-SIMULTANEOUS USE COMMON AREA	0 SF	
Grand total: 6		3,107 SF			53

Plumbing Fixture Schedule			
Room Name	Fixture	Required	Count
Level 1			
Circulation	Drinking Fountain (Double)	1	1
Circulation	Service Sinks	1	1
Men WC	SINK	1	1
Men WC	WATER CLOSET	1	1
Women WC	SINK	1	1
Women WC	WATER CLOSET	1	1



**Code Plan Legend:**

**Egress Path of Travel**  
Distance to Exit — 100'  
Common Path of Travel Distance — 50' CPT

**Egress Point**  
Maximum # of Occupants (by width) — 100 / 50  
Required # of Occupants — 100 / 50

**Stair Egress**  
Maximum # of Occupants (by width) — 28 / 14  
Required # of Occupants — 28 / 14  
Stair #1 | 4'-0"

**Occupancy Tag**  
Occupancy Group — B: 200 SF = 2P  
Area —  
Occupant Load —

**Fire Extinguisher Radius**  
75' Typ

**1-Hour: Fire Rated Assembly**  
**2-Hour: Fire Rated Assembly**  
**3-Hour: Fire Rated Assembly**  
**4-Hour: Fire Rated Assembly**  
**Smoke Barrier**  
**Smoke Partition**

Ventilation Summary:  
Existing unit: 10 ton unit. 800 cfm outside air.  
OA required = 10cfm/person + area \*.06  
OA required = 10cfm/64 + 2548\*.06  
OA required = 645 + 153 = 798