

STORE SIGNAGE: FRONT ELEV - SIGN B



Existing Conditions

Scale: NTS

SIGN
2 Measurements

Proposed Square Footage: 100.97

Scale: 3/8" = 1'-0"

Final Approval For Construction

approved
approved as noted
returned for corrections



The approval of working drawings are subject to the foll
a | all previous review comments
b| field approval by owner's representative
c| terms and conditions of the Lease Agreement

APPROVED

By: By Eric Hessler at 12:29 pm, Dec 07, 2020

The sole purpose of the drawing review by the Landlord's representative was an evaluation of the consistency with the aesthetic components of both the established criteria booklet and Landlord's design requirements. By reviewing these drawings and compliance, compliance with all aspects of the criteria booklet and the Landlord's design requirements, dimensional accuracy, engineering adequacy, or completeness of these with all aspects of the criteria booklet, Landlord's design requirements, codes, regulations, standards, and all other applicable laws and guidelines.

Submit blade sign shop drawings for review and approval by landlord.

Standard Sign Review Comments

- Tenant shall be responsible for meeting all applicable codes and obtaining all jurisdictional approvals.
- Tenant shall field verify lease space for existing conditions and that space conforms to approved lease outline diagram as approved with Lease Agreement.
- Provide blocking at all signage to ensure secure connection to building.
- Transformers shall be concealed from public view and accessible from within the tenant space.
- UL labels and manufacturer stickers are required but shall not be visible to public view.
- A local disconnect for the sign shall be installed by the Tenant's sign contractor.
- "Open" signs not permitted in any form within first 4'-0" of storefront glass.
- This review pertains to the information contained in this sign review package. Any information or aspect of the signs, graphics, banners etc. not included in this sign package is subject to Landlord approval.



Front Elevation

Scale: nts



LOCATION: Summit Woods Crossing
1752 NW Chipman Rd
Lee's Summit, MO 64081

SCALE: as noted

PG: 1 of 2

DATE: 10/15/20
10/28/20
11/9/20
11/24/20
12/02/20

DRAWN BY
nm/ebf

FILE: Rally-House_Kansas-City_Summit-Woods-Crossing_sign_package_12-2-20

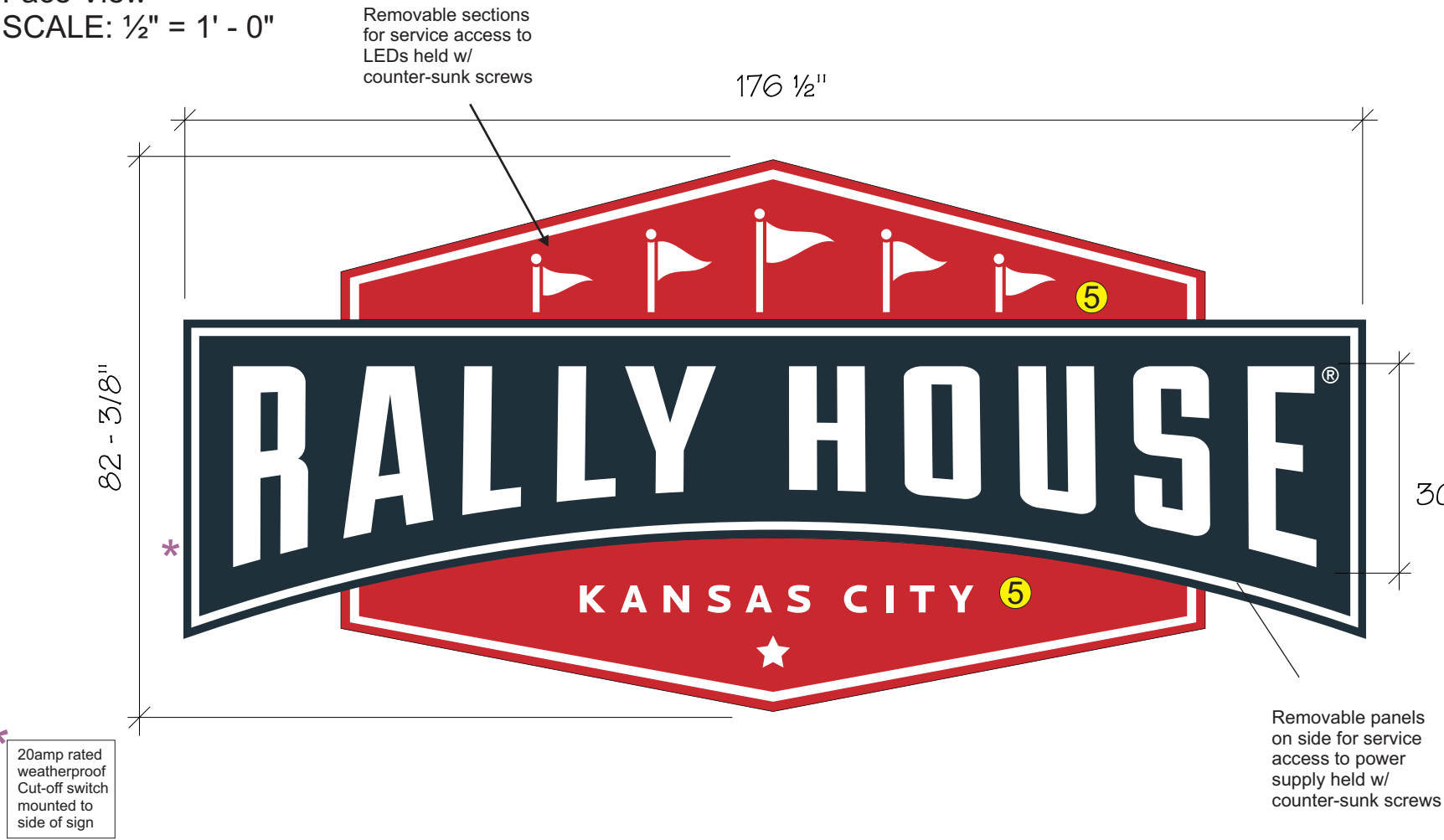
215-827-6500 • 215-827-6501 fax
barryj@formansign.com
©2007 Forman sign company. All rights reserved. No part of this document or the related files may be reproduced or transmitted in any form, by any means (electronic, copying, or otherwise) without the prior written permission of forman sign company.

formansigns
10447 Drummond Rd, Philadelphia, PA 19154

STORE SIGNAGE: INSTALLATION DETAILS

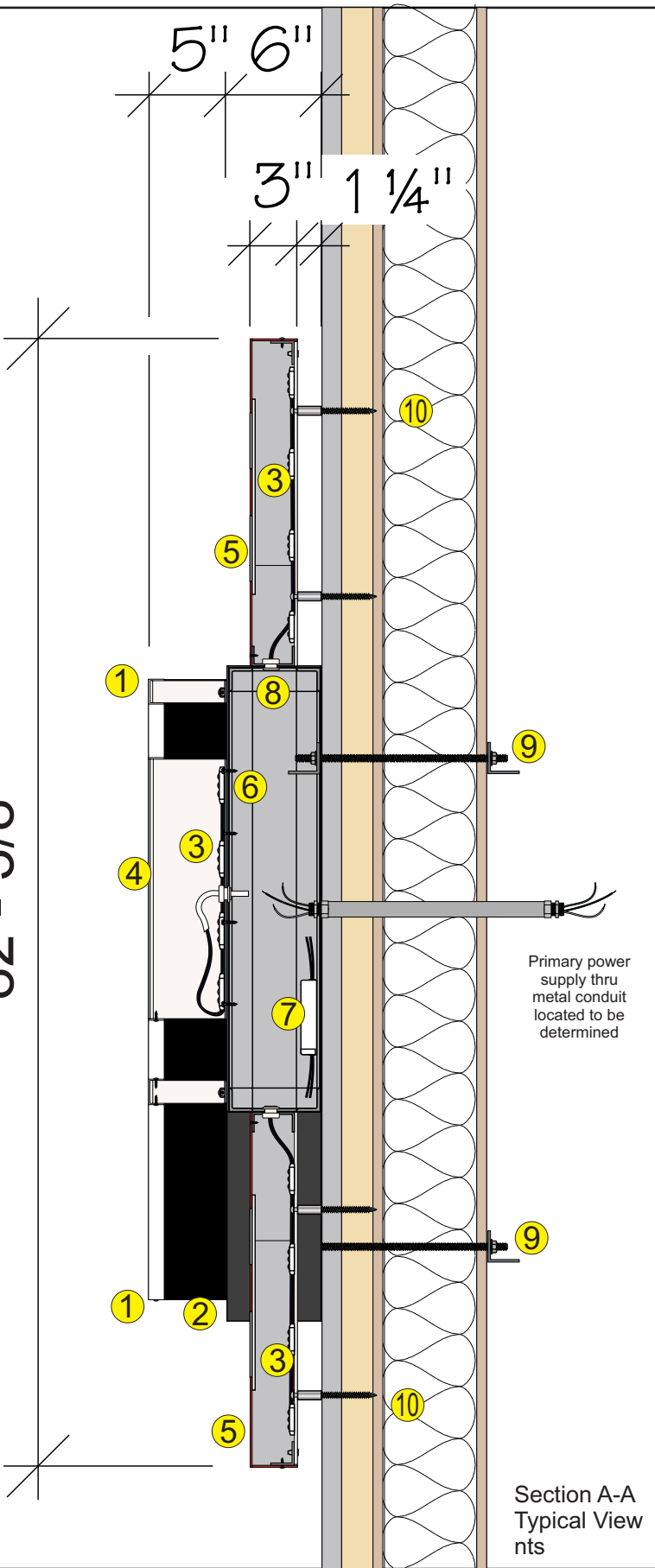
- 1) 1" Trim cap - WHITE
w/ sheet-metal screw painted to match trim cap
- 2) Case- w/ 1/4" dia drain holes- BLACK
- 3) LEDs - WHITE
- 4) Faces - 3/16" white acrylic
- 5) Red Sections top & bottom:
Plastic face- white acrylic; Red vinyl applied
halo lit w/ poly- carbonate backs spaced 1 1/4" off of wall
- 6) Galv. #10 hex-head sheet-metal screw attaching letter to .125" alum face
- 7) Power supply w/ Class II low voltage wiring & w/ cut-off switch for Primary Service
- 8) Porcelain bushing
- 9) Rust resistant threaded rod w/ metal angle "sleepers" spanning studs - as required
- 10) 3/16" x 5" rust resistant construction screws w/ alum. spacers 2' OC

Face View
SCALE: 1/2" = 1' - 0"



Side View

82 - 3/8"



Section A-A
Typical View
nts



LOCATION: Summit Woods Crossing
1752 NW Chipman Rd
Lee's Summit, MO 64081

SCALE: as noted

PG: 2 of 2

DATE: 10/15/20
10/28/20
11/9/20
11/24/20
12/02/20

DRAWN BY
nm/ebf

FILE: Rally-House_Kansas-City_Summit-Woods-Crossing_sign_package_12-2-20

215-827-6500 • 215-827-6501 fax
barryj@formansign.com
©2007 forman sign company. All rights reserved. No part of this document or the related files may be reproduced or transmitted in any form, by any means (electronic, copying, or otherwise) without the prior written permission of forman sign company.

formansigns
10447 Drummond Rd, Philadelphia, PA 19154