

LEE'S SUMMIT MIDDLE SCHOOL #4

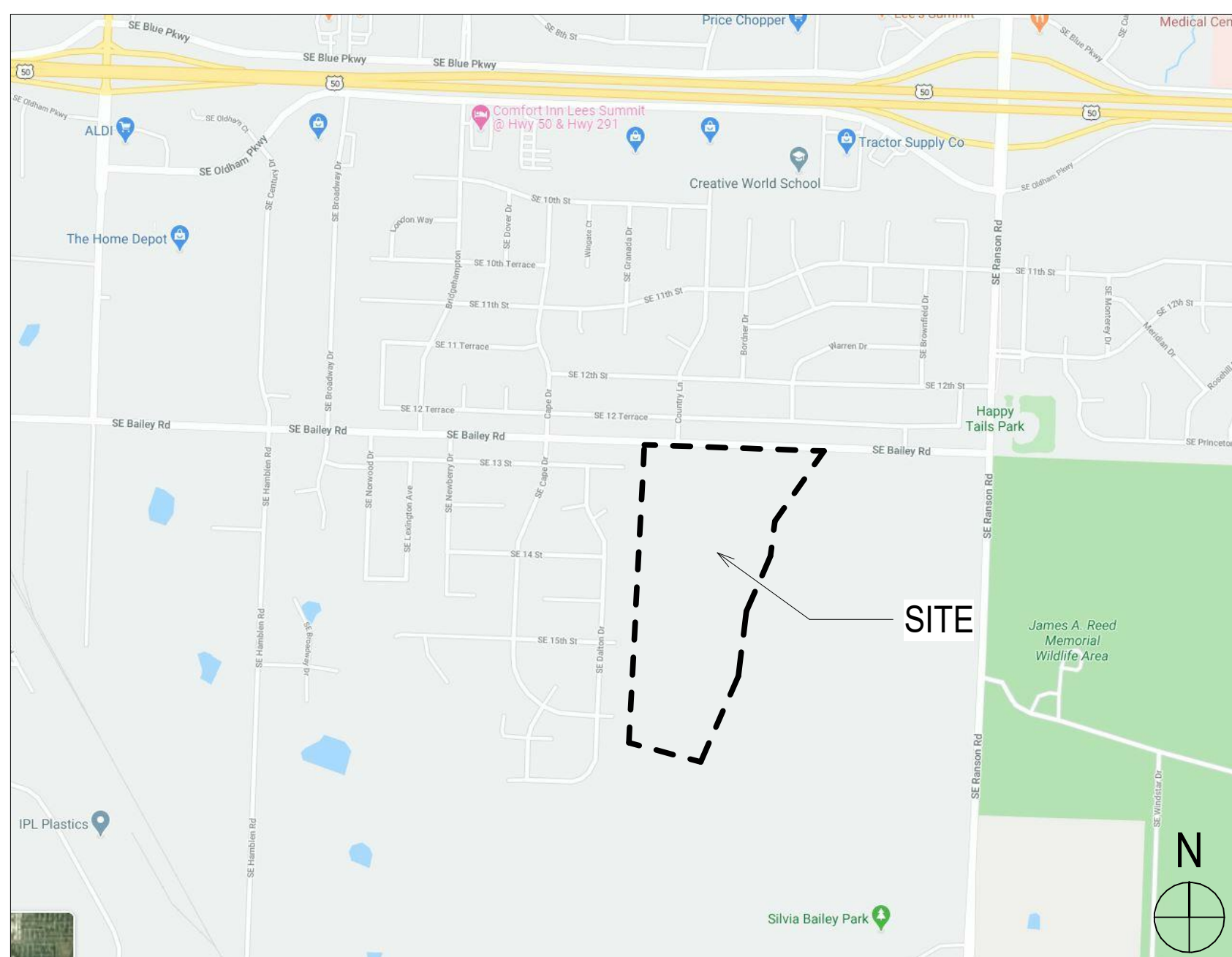
PACKAGE 2 - STRUCTURAL & SITE UTILITIES

1001 SE BAILEY ROAD
LEE'S SUMMIT, MO 64081

INDEX OF DRAWINGS

ISSUE FOR PERMIT - 08/28/2020

VICINITY MAP:



GENERAL - PACKAGE 2			
0.0B	COVER SHEET		
0.1B	SYMBOLS AND ABBREVIATIONS		
CP.00	CODE ANALYSIS - SITE PLAN		
CP.1.1	CODE PLAN - LEVEL 01		
CP.1.2	CODE PLAN - LEVEL 02		
CIVIL - PACKAGE 2			
C1001	GENERAL NOTES		
C1002	GENERAL LAYOUT PLAN		
C1003	SITE DIMENSION PLAN		
C1004	SITE DIMENSION PLAN		
C1005	SITE DIMENSION PLAN		
C1006	SITE DIMENSION PLAN		
C1007	SITE DIMENSION PLAN		
C1008	SITE DIMENSION PLAN		
C1009	SITE DIMENSION PLAN		
C1010	SITE DIMENSION PLAN		
C1011	SITE DIMENSION PLAN		
C1012	GRADING PLAN		
C1013	GRADING DETAILS		
C1015	GRADING DETAILS		
C1016	GRADING DETAILS		
C1018	GRADING DETAILS		
C1020	GRADING DETAILS		
C1021	GRADING DETAILS		
C1026	UTILITY PLAN		
C1027	UTILITY PLAN		
C1028	UTILITY PLAN		
C1029	STORM SEWER PLAN & PROFILE - LINE A		
C1030	STORM SEWER PLAN & PROFILE - LINE A AND B		
C1031	STORM SEWER PLAN & PROFILE - LINE C		
C1032	STORM SEWER PLAN & PROFILE - LINE C		
C1033	STORM SEWER PLAN & PROFILE - LINE CC		
C1034	STORM SEWER PLAN & PROFILE - LINE D		
C1035	STORM SEWER PLAN & PROFILE - LINE E		
C1036	STORM SEWER PLAN & PROFILE - LINE E		
C1037	STORM SEWER PLAN & PROFILE - LINE E		
C1038	STORM SEWER PLAN & PROFILE - LINE E		
C1039	STORM SEWER PLAN & PROFILE - LINE E		
C1040	STORM SEWER PLAN & PROFILE - LINE F		
C1041	STORM SEWER PLAN & PROFILE - LINE G		
C1042	STORM SEWER PLAN & PROFILE - LINE G		
C1043	STORM SEWER PLAN & PROFILE - LINE G		
C1044	STORM SEWER PROFILE - LINE H AND J		
C1045	STORM SEWER PROFILE - LINE K AND L		
C1046	STORM SEWER PROFILE - LINE M AND N		
C1050	STANDARD DETAILS		
C1051	STANDARD DETAILS		
C1052	STANDARD DETAILS		
C1053	STANDARD DETAILS		
C1054	STANDARD DETAILS		
C1055	STANDARD DETAILS		
C1056	STANDARD DETAILS		
		STRUCTURAL - PACKAGE 2	
		S0.1	STRUCTURAL NOTES
		S0.2	STRUCTURAL NOTES
		S0.3	SNOW DRIFT PLAN
		S0.4	STORM SHELTER STRUCTURAL CRITERIAL **
		S0.5	GRID GEOMETRY PLAN
		S1.1A	FOUNDATION PLAN - AREA A
		S1.1B	FOUNDATION PLAN - AREA B
		S1.1C	FOUNDATION PLAN - AREA C
		S1.1D	FOUNDATION PLAN - AREA D **
		S1.1E	FOUNDATION PLAN - AREA E **
		S1.1F	FOUNDATION PLAN - AREA F **
		S1.1G	FOUNDATION PLAN - AREA G **
		S1.1S	FOUNDATION PLAN AREAS S & T **
		S2.1A	FLOOR FRAMING PLAN - AREA A
		S2.1B	FLOOR FRAMING PLAN - AREA B
		S2.1C	FLOOR FRAMING PLAN - AREA C
		S2.1D	FLOOR FRAMING PLAN - AREA D **
		S2.1E	FLOOR FRAMING PLAN - AREA E **
		S2.1F	FLOOR FRAMING PLAN - AREA F **
		S2.1G	FLOOR FRAMING PLAN - AREA G**
		S2.2A	ROOF FRAMING PLAN - AREA A
		S2.2B	ROOF FRAMING PLAN - AREA B
		S2.2C	ROOF FRAMING PLAN - AREA C
		S2.2D	ROOF FRAMING PLAN - AREA D **
		S2.2E	ROOF FRAMING PLAN - AREA E **
		S2.2F	ROOF FRAMING PLAN - AREA F **
		S2.2G	ROOF FRAMING PLAN - AREA G **
		S2.2S	ROOF FRAMING PLAN - AREAS S & T **
		S3.1	FOUNDATION TYPICAL DETAILS
		S3.2	FOUNDATION TYPICAL DETAILS
		S3.5	FOUNDATION SECTIONS
		S3.7	FOUNDATION SECTIONS **
		S4.1	STEEL TYPICAL DETAILS
		S4.2	FLOOR FRAMING TYPICAL DETAILS
		S4.5	FLOOR FRAMING SECTIONS
		S4.7	FLOOR FRAMING SECTIONS **
		S4.8	MASONRY TYPICAL DETAILS**
		S4.9	PRECAST TYPICAL DETAILS **
		S5.1	ROOF FRAMING TYPICAL DETAILS
		S5.5	ROOF FRAMING SECTIONS
		S6.1	BRACED FRAME TYPICAL DETAILS
		S6.2	BRACED FRAME ELEVATIONS
		S6.3	BRACED FRAME ELEVATIONS **

** FOR REFERENCE ONLY, NOT FOR CONSTRUCTION, UNDER SEPARATE PERMIT

DESIGN TEAM:

OWNER: LEE'S SUMMIT R-7 SCHOOL DISTRICT 602 SE TRANSPORT DRIVE LEE'S SUMMIT, MO 64083 816.966.3415	ARCHITECT OF RECORD: DLR GROUP 7290 WEST 133RD ST OVERLAND PARK, KS 66213 913.897.7811	CIVIL ENGINEER: OLSSON 7701 WEST 133RD ST OVERLAND PARK, KS 66213 913.381.1170	LANDSCAPE ARCHITECT: DLR GROUP 7290 WEST 133RD ST OVERLAND PARK, KS 66213 913.897.7811	M.E.P. ENGINEER: HENDERSON ENGINEERS 8455 LENEXA DRIVE SUITE 300 LENEXA, KS 66224 913.742.5000	STRUCTURAL ENGINEER: DLR GROUP 7290 WEST 133RD ST OVERLAND PARK, KS 66213 913.897.7811	CONSTRUCTION MANAGER: MCCOWINGORDON CONSTRUCTION 422 ADMIRAL BOULEVARD KANSAS CITY, MO 64106 816.877.0690
--	--	--	--	--	--	---

LEE'S SUMMIT MIDDLE SCHOOL #4
LEE'S SUMMIT R-7 SCHOOL DISTRICT
1001 SE BAILEY ROAD
LEE'S SUMMIT, MO 64081

PACKAGE 2 -
STRUCTURAL & SITE UTILITIES

ISSUE FOR PERMIT
8/28/20
REVISIONS

13-20102-00

COVER SHEET

0.0B

RELEASE FOR
CONSTRUCTION
AS NOTED ON PLANS REVIEW
DEVELOPMENT SERVICES
LEE'S SUMMIT, MISSOURI
12/09/2020

DLR Group
© DLR Group
ALL RIGHTS RESERVED
Missouri State Certificate of Authority #00099

NOT FOR
CONSTRUCTION

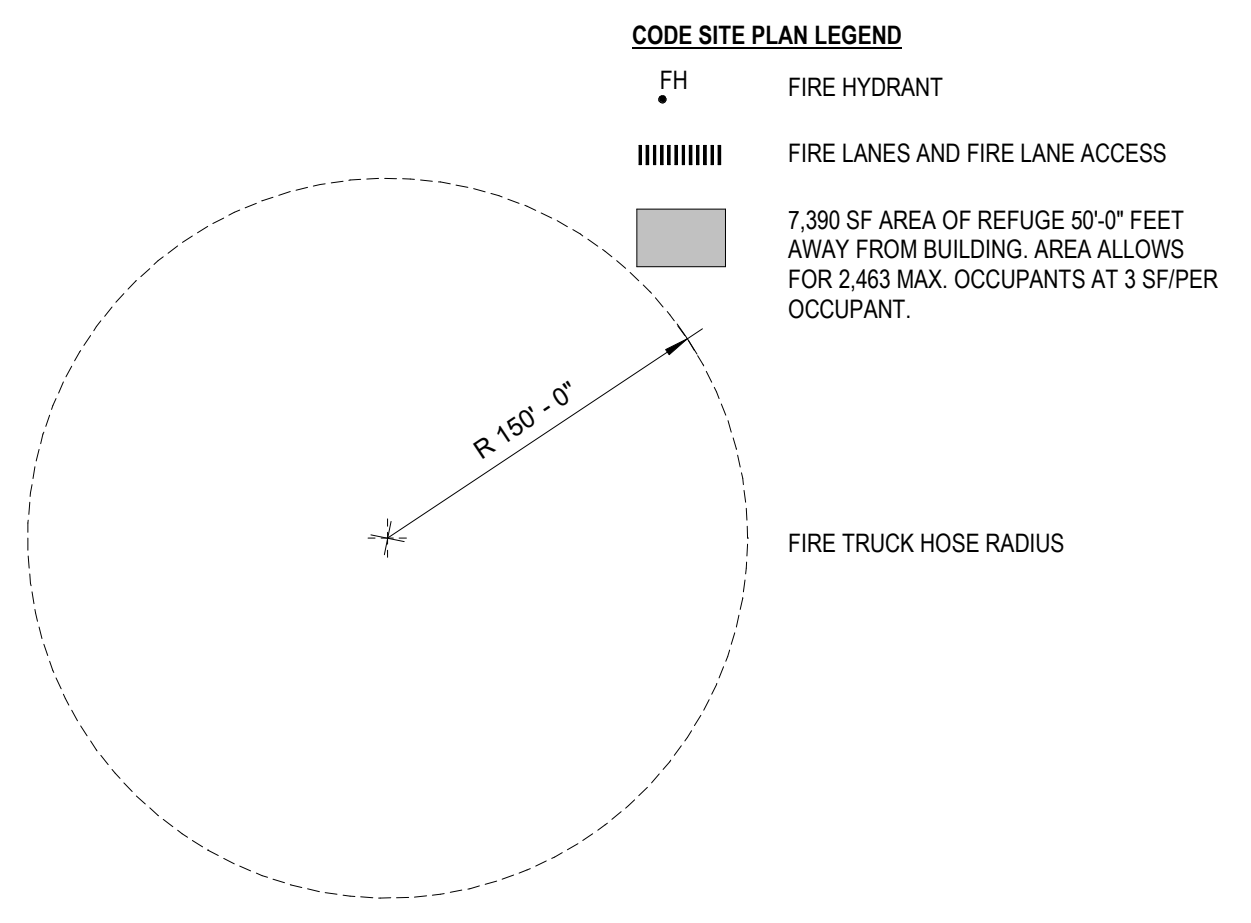
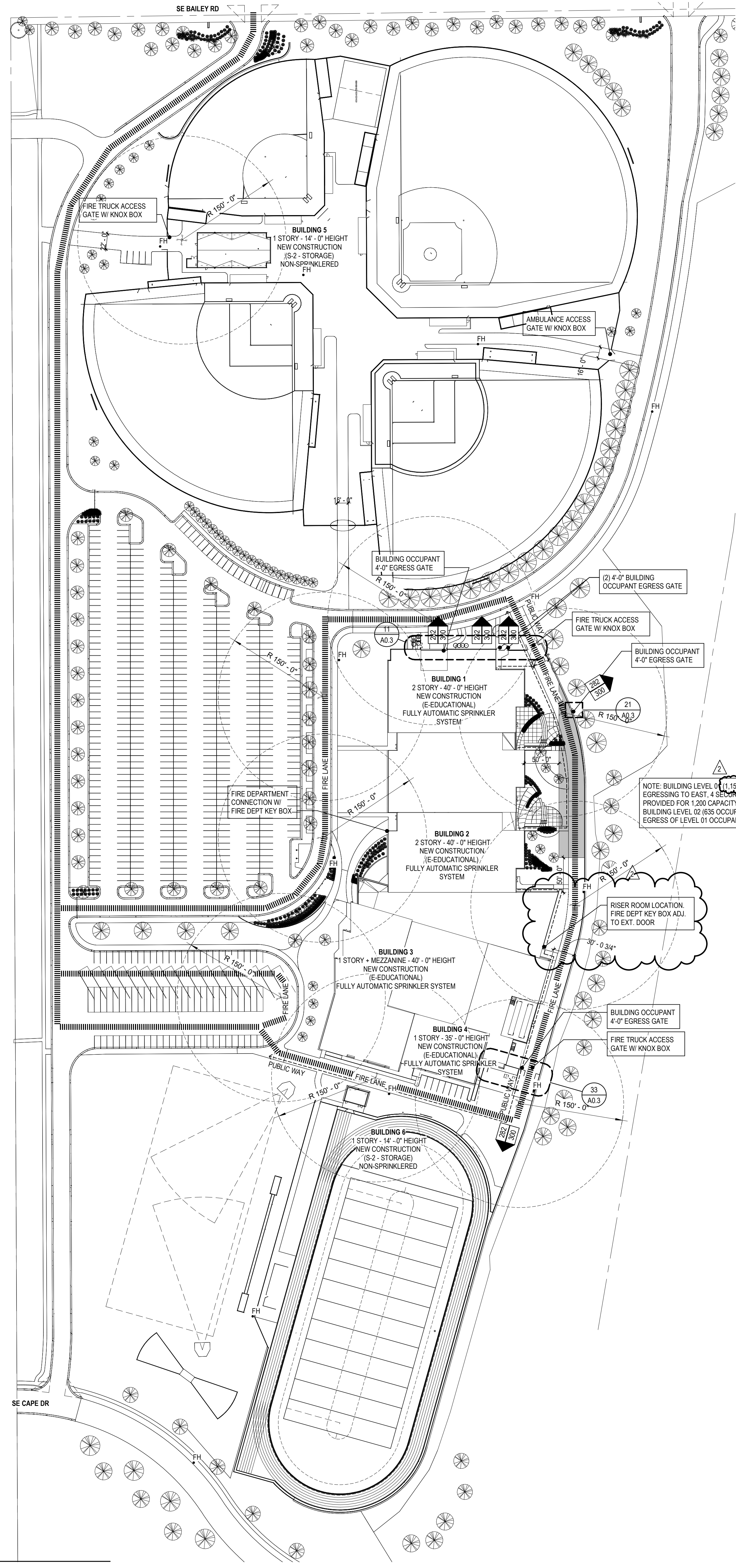
Table with 4 columns: # and @, NUMBER AND AT, EXP AND EXT, EXPANSION EXTERIOR, NWC, NORMAL WEIGHT CONCRETE, VERT, VERTICAL, VESTIBULE, VINYL FLOOR, VOC, VOL, VOLUME, VP, VENEER PLASTER, VT, VINYL TILE, VWC, VINYL WALL COVERING.

GENERAL SYMBOLS

Table of general symbols including: DETAIL NUMBER, CROSS REFERENCE, SHEET NUMBER, SIMILAR OR TYPICAL REFERENCE, WALL SECTION, BUILDING SECTION, BUILDING ELEVATION, INTERIOR ELEVATION, CASEWORK ELEVATION, KEYNOTE, COLUMN GRID LINE, ROOM NUMBER/NAME, DOOR NUMBER / INTERIOR WINDOW, EXTERIOR WINDOW NUMBER, WALL TYPE, REVISION NUMBER, EARTH, GRAVEL, SAND, CONCRETE, PRECAST CONCRETE, STEEL, GYM FLOOR, WOOD, WOOD (CONTINUOUS BLOCKING), WOOD (NON-CONTINUOUS BLOCKING), WOOD (TRIM/FINISH), GLASS, SHINGLES, CONCRETE MASONRY UNIT, BRICK VENEER, STEEL (LARGE SCALE), PLYWOOD (LARGE SCALE), GYPSUM WALL BOARD, BATT INSULATION, RIGID INSULATION, SPRAY FOAM INSULATION, FIRE SAFING INSULATION, PROTECTION BOARD, CARPET (LARGE SCALE), ACOUSTIC TILE (LARGE SCALE), TILE (LARGE SCALE).

SITE SYMBOLS

Table of site symbols including: PROPERTY LINE, LOT LINE, EASEMENT LINE, BUILDING LINE, EXISTING, PRIMARY CONTOUR, EXISTING, PRIMARY CONTOUR, NEW, SECONDARY CONTOUR, EXISTING, SECONDARY CONTOUR, NEW, SLOPE, PAVEMENT, DRAINAGE DITCH OR SWALE, STREET CENTERLINE, CURB, THICKENED EDGE, CURB, EXISTING, CURB, NEW, PAVING CONTRACTION JOINT, PAVING KEYED CONSTRUCTION JOINT, PAVING TIED CONSTRUCTION JOINT, PAVING EXPANSION JOINT, FENCE, SECURITY, FENCE, BARBED WIRE, FENCE, CHAIN LINK, FENCE, WOOD, SEED LIMIT, SOD LIMIT, STORM DRAIN, SUBDRAIN, SUBDRAIN, PERFORATED, SANITARY SEWER, FORCE MAIN, WATER, FIRE, GAS, HIGH PRESSURE STEAM, MEDIUM PRESSURE STEAM, LOW PRESSURE STEAM, UNDERGROUND ELECT/TELEPHONE, OVERHEAD POWER, LAWN SPRINKLER HOT LINE, LAWN SPRINKLER LATERAL, AREA INLET, CURB INLET, MANHOLE, OBSERVATION RISER, HEAD WALL, FLARED END, CLEAN OUT, CAP, THRUST BLOCK, VALVE, POST INDICATOR VALVE, REDUCER, MAGNESIUM ANODE, DIELECTRIC COUPLING, CATHODIC TEST STATION, FIRE HYDRANT, POWER POLE, LIGHT POLE, TELEPHONE MANHOLE, TELEPHONE BOX, SPRINKLER HEAD, 30", SPRINKLER HEAD, 270", SPRINKLER HEAD, 180", SPRINKLER HEAD, 90", QUICK COUPLING, TREE, EXISTING DECIDUOUS, TREE, EXISTING CONIFER, SHADE TREE, ORNAMENTAL TREE, DECIDUOUS TREE, SHRUB, CLIPPED SHRUB.



SYMBOL LEGEND

- OC - OCCUPANCY LOAD
- ACCESSORY USE AREA (OCCUPANCY LOAD IS NOT INCLUDED IN LOADS BEYOND THIS ROOM)
-COMBINED OCCUPANT LOAD AT A GIVEN DOOR OR STAIR
-TOTAL EXIT CAPACITY OF DOOR OR STAIR (THE CAPACITY OF DOORS ARE DETERMINED AS FOLLOWS: CLEAR OPENING WIDTH IN INCHES DIVIDED BY 0.15. THE CAPACITY OF STAIRS ARE DETERMINED AS FOLLOWS: WIDTH IN INCHES DIVIDED BY 0.2 FOR SPRINKLERED PER 1005.3.1 EXCEPTION 1)
-COMBINED OCCUPANT LOAD AT A GIVEN DOOR (SUM OF THESE EQUALS TOTAL OCCUPANT LOAD)
-TOTAL EXIT CAPACITY OF DOOR (THE CAPACITY OF DOORS ARE DETERMINED AS FOLLOWS: CLEAR OPENING WIDTH IN INCHES DIVIDED BY 0.15)
-PANIC DEVICE
XX MIN - DOOR FIRE RATING

WALL SEPARATION LEGEND

- WALL HOURLY RATING: 0 = 0 HOUR, 1/2 = 1/2 HOUR, 1 = 1 HOUR, 2 = 2 HOUR, 3 = 3 HOUR, SP = SMOKE PARTITION, SW = SMOKE WALL
WALL FIRE RATING TYPE: C = CORRIDOR, EW = EXTERIOR WALL, FB = FIRE BARRIER, FP = FIRE PARTITION, FSB = FIRE SMOKE BARRIER, FW = FIRE WALL, HK = HORIZONTAL EXIT, SB = SMOKE BARRIER, VS = VERTICAL SHAFT, VX = VERTICAL EXIT, XP = EXIT PASSAGEWAY

TYPICAL DOOR WIDTHS

Table with 4 columns: DOOR WIDTH, CLEAR WIDTH, IBC 1005.1 FACTOR, ALLOWABLE OCCUPANCY. Rows include 36", 42", 48", PAIR 36", PAIR 42", PAIR 48".

EXIT ACCESS STAIRWAYS:

- 1. EXIT ACCESS STAIRWAYS AND RAMPS - TRAVEL DISTANCE ON EXIT ACCESS STAIRWAYS OR RAMPS SHALL BE INCLUDED IN THE EXIT ACCESS TRAVEL DISTANCE MEASUREMENT PER IBC 2018 1017.3.1.
2. TWO-STORY OPENINGS - OPENINGS DO NOT CONNECT MORE THAN TWO STORIES PER IBC 712.1.9, EXCEPTION 1.
3. EXIT ACCESS STAIRWAYS AND RAMPS SERVE ONLY TWO STORIES PER IBC 1019.3, EXCEPTION 1, AND DO NOT REQUIRE A SHAFT ENCLOSURE.

BUILDING 1:

OCCUPANCY GROUP: E
CONSTRUCTION TYPE: IIB
ALLOWABLE AREA (IBC TABLE 506.2): 43,500 SF
ALLOWABLE AREA INCREASE FOR FRONTAGE (IBC 506.2.3 SINGLE OCCUPANCY, MULTI STORY BUILDING IBC 506.3 FRONTAGE INCREASE):

IF= .6
Aa=[At + (NS * If)] * Sa
Aa=[43,500+(14,500*.6)]

TOTAL ALLOWABLE AREA PER FLOOR: 52, 200
ACTUAL AREA PER FLOOR:
LEVEL 01: 20,385 SF
LEVEL 02: 20,385 SF

MAXIMUM ALLOWABLE BUILDING HEIGHT (PER TABLE 504.3): 75'-0"
ACTUAL BUILDING HEIGHT: 42' - 3"

BUILDING 2:

OCCUPANCY GROUP: E
CONSTRUCTION TYPE: IIB
ALLOWABLE AREA (IBC TABLE 506.2): 43,500 SF
ALLOWABLE AREA INCREASE FOR FRONTAGE (IBC 506.3):

IF= .26
Aa=[At + (NS * If)] * Sa
Aa=[43,500 + (14,500 * .26)]

TOTAL ALLOWABLE AREA PER FLOOR: 47, 270
ACTUAL AREA PER FLOOR:
LEVEL 01: 41,978 SF
LEVEL 02: 41,842 SF

MAXIMUM ALLOWABLE BUILDING HEIGHT (PER TABLE 504.3): 75'-0"
ACTUAL BUILDING HEIGHT: 42' - 3"

BUILDING 3:

OCCUPANCY GROUP: E
CONSTRUCTION TYPE: IIB
ALLOWABLE AREA (IBC TABLE 506.2): 58, 000 SF
ALLOWABLE AREA INCREASE FOR FRONTAGE (IBC 506.3):

IF= .67
Aa=[At + (NS * If)] * Sa
Aa=[58,000 + (14,500 * .67)]

TOTAL ALLOWABLE AREA PER FLOOR: 67, 715
ACTUAL AREA PER FLOOR:
LEVEL 01: 61,768 SF
MEZZANINE AND EQUIPMENT PLATFORMS: 5,718 SF

MAXIMUM ALLOWABLE BUILDING HEIGHT: 75'-0"
ACTUAL BUILDING HEIGHT: 32'-0"

BUILDING 4:

OCCUPANCY GROUP: E
CONSTRUCTION TYPE: IIB
ALLOWABLE AREA (IBC TABLE 506.2): 58,000 SF
ALLOWABLE AREA INCREASE FOR FRONTAGE (IBC 506.2.2, 506.3):

IF= .46
Aa=[At + (NS * If)] * Sa
Aa=[58,000 + (14,500 * .46)]

TOTAL ALLOWABLE AREA PER FLOOR: 64,670
ACTUAL AREA PER FLOOR: LEVEL 01: 8,126 SF

MAXIMUM ALLOWABLE BUILDING HEIGHT: 75'-0"
ACTUAL BUILDING HEIGHT: 32'-0"

BUILDING 5:

OCCUPANCY GROUP: S-2
CONSTRUCTION TYPE: IIB
ALLOWABLE AREA (IBC TABLE 506.2): 26,000 SF
ALLOWABLE AREA INCREASE FOR FRONTAGE (IBC 506.2.2, 506.3):
*NONSEPARATED USE OCCUPANCY - ALLOWABLE AREA AND HEIGHT OF BUILDING BASED ON MOST RESTRICTIVE ALLOWANCES PER 508.3.2.

IF=.4
Aa=[At + (NS * If)] * Sa
Aa=[26,000 + (26,000 * .4)]

TOTAL ALLOWABLE AREA PER FLOOR: 36,400
ACTUAL AREA PER FLOOR: 4,829 SF
MAXIMUM ALLOWABLE BUILDING HEIGHT: 55'-0"
ACTUAL BUILDING HEIGHT: 14'-0"

BUILDING 6:

OCCUPANCY GROUP: S-2
CONSTRUCTION TYPE: IIB
ALLOWABLE AREA (IBC TABLE 506.2): 26,000 SF
ALLOWABLE AREA INCREASE FOR FRONTAGE (IBC 506.2.2, 506.3):

IF= 4
Aa=[At + (NS * If)] * Sa
Aa=[26,000 + (26,000 * .4)]

TOTAL ALLOWABLE AREA PER FLOOR: 36,400
ACTUAL AREA PER FLOOR: 740 SF
MAXIMUM ALLOWABLE BUILDING HEIGHT: 55'-0"
ACTUAL BUILDING HEIGHT: 14'-0"

PROJECT LOCATION:
1001 SE BAILEY ROAD
LEE'S SUMMIT, MO 64081

OWNER NAME:
LEE'S SUMMIT R-7 SCHOOL DISTRICT

OWNER CONTACT:
KYLE GORRELL, DIRECTOR LSR7 FACILITY SERVICES

OWNER ADDRESS:
DEPARTMENT OF LEE'S SUMMIT SCHOOL DISTRICT
FACILITY SERVICES
502 SE TRANSPORT DRIVE
LEE'S SUMMIT, MO 64081

COUNTY: JACKSON COUNTY

FIRE DEPARTMENT:
LEE'S SUMMIT FIRE DEPARTMENT

WATER SUPPLY:
LEE'S SUMMIT WATER UTILITIES

AUTHORITY HAVING JURISDICTION:
CITY OF LEE'S SUMMIT

ARCHITECT OF RECORD:
DLR GROUP
7290 WEST 133RD STREET, OVERLAND PARK, KS 66213

CODES/REGULATIONS:
BUILDING: 2018 IBC
FIRE: 2018 INTERNATIONAL FIRE CODE
MECHANICAL: 2018 INTERNATIONAL MECHANICAL CODE
PLUMBING: 2018 INTERNATIONAL PLUMBING CODE
ELECTRICAL: 2017 NATIONAL ELECTRICAL CODE
ACCESSIBLE STANDARD: ICC/ANSI A117.1-2017

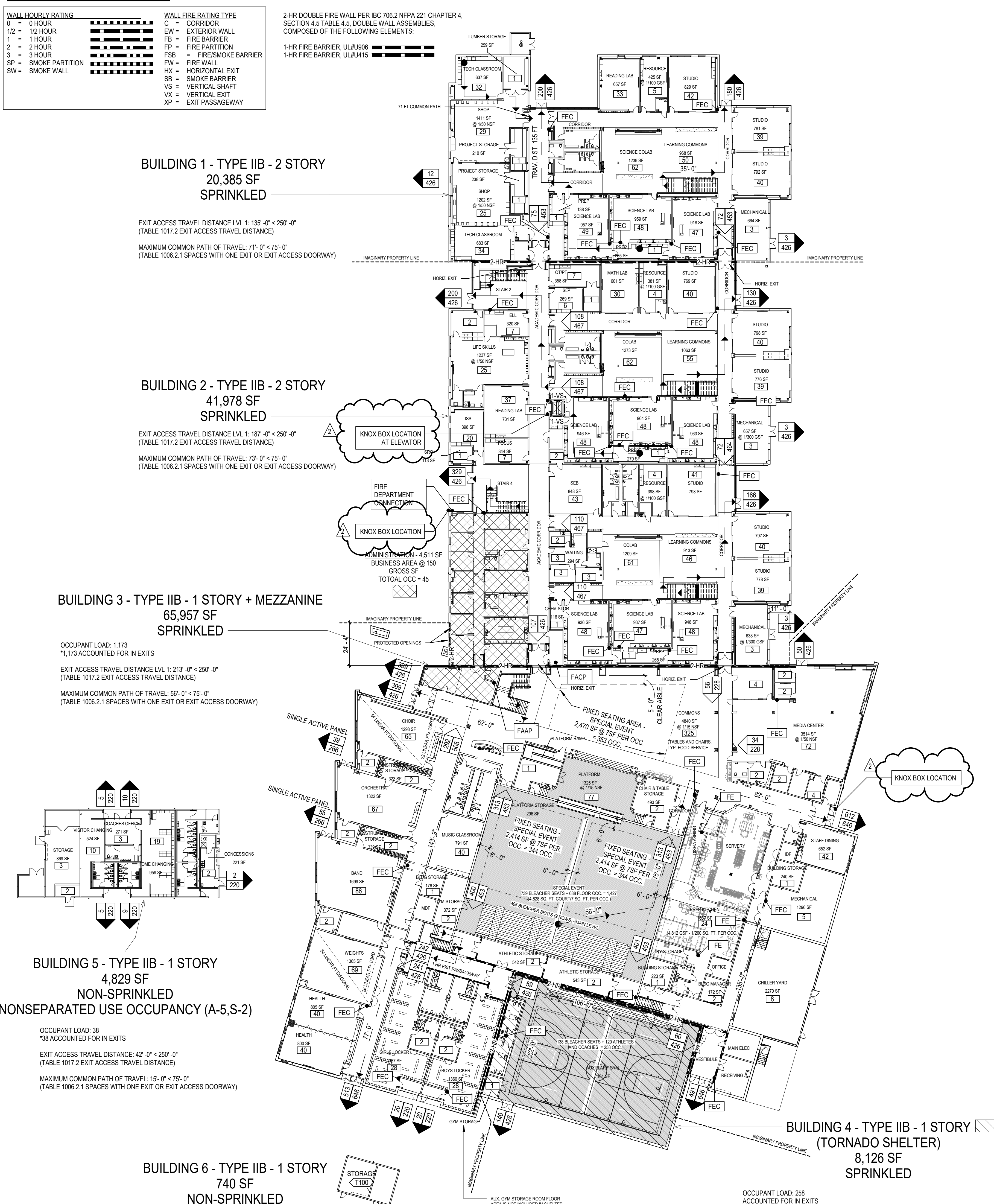
NEW CONSTRUCTION:
OCCUPANCY:
EDUCATIONAL GROUP E (SECTION 305): INSTRUCTIONAL AREAS
CONSTRUCTION TYPE (SECTION 602): TYPE IIB
ALLOWABLE HEIGHT (PER IBC TABLE 504.3): 75' - 0"
ALLOWABLE NUMBER OF STORIES (PER TABLE 504.4): 3

SEPARATION REQUIREMENTS:
BUILDING SEPARATION
PER TABLE 706.4: 2-HOUR FIRE WALL
*a. IN TYPE II CONSTRUCTION, WALLS SHALL BE PERMITTED TO HAVE A 2-HOUR FIRE-RESISTANCE RATING

LIFE SAFETY
AUTOMATIC FIRE SUPPRESSION SYSTEM THROUGHOUT
FIRE ALARMS THROUGHOUT
FIRE EXTINGUISHERS THROUGHOUT
EMERGENCY LIGHTING
FIRE DEPARTMENT CONNECTIONS -SEE CIVIL AND PLUMBING PLANS
FIRE ALARM ANNUNCIATOR PANEL (FAAP) - AT RECEPTION D100A
FIRE ALARM CONTROL PANEL (FACP) - AT ELECTRICAL C116
SMOKE CONTROL SYSTEM: NOT APPLICABLE
MANUAL ALARMS
COMMUNICATIONS AND ELECTRICAL ROOMS: NO UPS PROVIDED, NO RACK OF BATTERIES PROVIDED.
PENETRATIONS THROUGH FLOORS (PIPING, CONDUIT, ETC.): ANNULAR SPACE AROUND PENETRATING ITEMS TO BE FILLED WITH APPROVED MATERIALS TO RESIST THE FREE PASSAGE OF FLAME AND THE PRODUCTS OF COMBUSTION, PER 2018 IBC 714.6.2 AND 718.2.5.
DUCT PENETRATIONS THROUGH FLOORS: ANNULAR SPACE AROUND PENETRATING DUCT TO BE FILLED WITH AN APPROVED NON-COMBUSTIBLE MATERIAL THAT RESISTS THE FREE PASSAGE OF FLAME AND THE PRODUCTS OF COMBUSTION, PER 2018 IBC 717.6.3.2 AND 718.2.5

PLUMBING FIXTURES

Table with columns: # OCCUPANTS, WC REQ'D, WC PROVIDED, LAV REQ'D, LAV PROVIDED, DRINKING FOUNTAINS. Rows include STUDENTS/ FACULTY, MAIN GYMNASIUM - PERFORMANCE SPECIAL EVENT, MAIN GYMNASIUM - ATHLETIC COMPETITION (ASSEMBLY), BASEBALL/SOFTBALL COMPLEX (ASSEMBLY), and TORNADO SHELTER.



CODE PLAN, LEVEL 1

SCALE: 1" = 30'-0"



SYMBOL LEGEND

- OCCUPANCY LOAD
- ACCESSORY USE AREA (OCCUPANCY LOAD IS NOT INCLUDED IN LOADS BEYOND THIS ROOM)
- COMBINED OCCUPANT LOAD AT A GIVEN DOOR OR STAIR (TOTAL EXIT CAPACITY OF DOOR OR STAIR (THE CAPACITY OF DOORS ARE DETERMINED AS FOLLOWS: CLEAR OPENING WIDTH IN INCHES DIVIDED BY 0.15 THE CAPACITY OF STAIRS ARE DETERMINED AS FOLLOWS WIDTH IN INCHES DIVIDED BY 0.2 FOR SPRINKLERED PER 1005.3.1 EXCEPTION 1))
- COMBINED OCCUPANT LOAD AT A GIVEN DOOR. (SUM OF THESE EQUALS TOTAL OCCUPANT LOAD) (TOTAL EXIT CAPACITY OF DOOR (THE CAPACITY OF DOORS ARE DETERMINED AS FOLLOWS: CLEAR OPENING WIDTH IN INCHES DIVIDED BY 0.15))
- PANIC DEVICE
- DOOR FIRE RATING

WALL SEPARATION LEGEND

- | | |
|---------------------------|------------------------------|
| WALL HOURLY RATING | WALL FIRE RATING TYPE |
| 0 = 0 HOUR | C = CORRIDOR |
| 1/2 = 1/2 HOUR | EW = EXTERIOR WALL |
| 1 = 1 HOUR | FB = FIRE BARRIER |
| 2 = 2 HOUR | FP = FIRE PARTITION |
| 3 = 3 HOUR | FSB = FIRE-SMOKE BARRIER |
| SP = SMOKE PARTITION | FW = FIRE WALL |
| SW = SMOKE WALL | HX = HORIZONTAL EXIT |
| | SB = SMOKE BARRIER |
| | VS = VERTICAL SHAFT |
| | VX = VERTICAL EXIT |
| | XP = EXIT PASSAGEWAY |

TYPICAL DOOR WIDTHS

DOOR WIDTH	CLEAR WIDTH	IBC 1005.1 FACTOR	ALLOWABLE OCCUPANCY
36"	33"	0.15	220
42"	39"	0.15	260
48"	45"	0.15	300
PAIR 36"	64"	0.15	426
PAIR 42"	76"	0.15	506
PAIR 48"	88"	0.15	586

BUILDING 1:

OCCUPANCY GROUP: E
 CONSTRUCTION TYPE: IIB
 ALLOWABLE AREA (IBC TABLE 506.2): 43,500 SF
 ALLOWABLE AREA INCREASE FOR FRONTAGE (IBC 506.2.3 SINGLE OCCUPANCY, MULTI STORY BUILDING IBC 506.3 FRONTAGE INCREASE):

IF= .6
 $Aa=[At + (NS * If)] * Sa$
 $Aa=[43,500 + (14,500 * .6)]$

TOTAL ALLOWABLE AREA PER FLOOR: 52, 200

ACTUAL AREA PER FLOOR:
 LEVEL 01: 20,385 SF
 LEVEL 02: 20,385 SF

MAXIMUM ALLOWABLE BUILDING HEIGHT (PER TABLE 504.3): 75' - 0"
 ACTUAL BUILDING HEIGHT: 42' - 3"

BUILDING 2:

OCCUPANCY GROUP: E
 CONSTRUCTION TYPE: IIB
 ALLOWABLE AREA (IBC TABLE 506.2): 43,500 SF
 ALLOWABLE AREA INCREASE FOR FRONTAGE (IBC 506.3):

IF= .26
 $Aa=[At + (NS * If)] * Sa$
 $Aa=[43,500 + (14,500 * .26)]$

TOTAL ALLOWABLE AREA PER FLOOR: 47, 270

ACTUAL AREA PER FLOOR:
 LEVEL 01: 41,978 SF
 LEVEL 02: 41,842 SF

MAXIMUM ALLOWABLE BUILDING HEIGHT (PER TABLE 504.3): 75' - 0"
 ACTUAL BUILDING HEIGHT: 42' - 3"

BUILDING 3:

OCCUPANCY GROUP: E
 CONSTRUCTION TYPE: IIB
 ALLOWABLE AREA (IBC TABLE 506.2): 58, 000 SF
 ALLOWABLE AREA INCREASE FOR FRONTAGE (IBC 506.3):

IF= .67
 $Aa=[At + (NS * If)] * Sa$
 $Aa=[58,000 + (14,500 * .67)]$

TOTAL ALLOWABLE AREA PER FLOOR: 67, 715

ACTUAL AREA PER FLOOR:
 LEVEL 01: 61,768 SF
 MEZZANINE AND EQUIPMENT PLATFORMS: 5,718 SF

MAXIMUM ALLOWABLE BUILDING HEIGHT: 75'-0"
 ACTUAL BUILDING HEIGHT: 32'-0"

BUILDING 4:

OCCUPANCY GROUP: E
 CONSTRUCTION TYPE: IIB
 ALLOWABLE AREA (IBC TABLE 506.2): 58,000 SF
 ALLOWABLE AREA INCREASE FOR FRONTAGE (IBC 506.2.2, 506.3):

IF= .46
 $Aa=[At + (NS * If)] * Sa$
 $Aa=[58,000 + (14,500 * .46)]$

TOTAL ALLOWABLE AREA PER FLOOR: 64,670

ACTUAL AREA PER FLOOR: LEVEL 01: 8,126 SF

MAXIMUM ALLOWABLE BUILDING HEIGHT: 75'-0"
 ACTUAL BUILDING HEIGHT: 32'-0"

BUILDING 5:

OCCUPANCY GROUP: S-2
 CONSTRUCTION TYPE: IIB
 ALLOWABLE AREA (IBC TABLE 506.2): 26,000 SF
 ALLOWABLE AREA INCREASE FOR FRONTAGE (IBC 506.2.2, 506.3):
***NONSEPARATED USE OCCUPANCY - ALLOWABLE AREA AND HEIGHT OF BUILDING BASED ON MOST RESTRICTIVE ALLOWANCES PER 508.3.2.**

IF= .4
 $Aa=[At + (NS * If)] * Sa$
 $Aa=[26,000 + (26,000 * .4)]$

TOTAL ALLOWABLE AREA PER FLOOR: 36,400

ACTUAL AREA PER FLOOR: 4,829 SF
 MAXIMUM ALLOWABLE BUILDING HEIGHT: 55'-0"
 ACTUAL BUILDING HEIGHT: 14'-0"

BUILDING 6:

OCCUPANCY GROUP: S-2
 CONSTRUCTION TYPE: IIB
 ALLOWABLE AREA (IBC TABLE 506.2): 26,000 SF
 ALLOWABLE AREA INCREASE FOR FRONTAGE (IBC 506.2.2, 506.3):

IF= .4
 $Aa=[At + (NS * If)] * Sa$
 $Aa=[26,000 + (26,000 * .4)]$

TOTAL ALLOWABLE AREA PER FLOOR: 36,400

ACTUAL AREA PER FLOOR: 740 SF
 MAXIMUM ALLOWABLE BUILDING HEIGHT: 55'-0"
 ACTUAL BUILDING HEIGHT: 14'-0"

BUILDING 1 - TYPE IIB - 2 STORY
 20,293 SF
 SPRINKLED

EXIT ACCESS TRAVEL DISTANCE LVL 2: 238'-0" < 250'-0"
 (TABLE 1017.2 EXIT ACCESS TRAVEL DISTANCE)
 MAXIMUM COMMON PATH OF TRAVEL LEVEL 2: 63'-0" < 75'-0"
 (TABLE 1006.2.1 SPACES WITH ONE EXIT OR EXIT ACCESS DOORWAY)

BUILDING 2 - TYPE IIB - 2 STORY
 40,842 SF
 SPRINKLED

EXIT ACCESS TRAVEL DISTANCE: 238'-0" < 250'-0"
 (TABLE 1017.2 EXIT ACCESS TRAVEL DISTANCE)
 MAXIMUM COMMON PATH OF TRAVEL: 70'-0" < 75'-0"
 (TABLE 1006.2.1 SPACES WITH ONE EXIT OR EXIT ACCESS DOORWAY)

BUILDING 3 - TYPE IIB - 1 STORY + MEZZANINE
 65,957 SF
 SPRINKLED

UPPER SEATING IS 144 < 147% OF TOTAL BLEACHER, AND EGRESS DOWN STAIRS

IBC 1108.2.4 DISPERSION OF WHEELCHAIR SPACES. EXCEPTION #2: IN MULTILEVEL ASSEMBLY SEATING AREAS WHERE THE SECOND FLOOR OR MEZZANINE LEVEL PROVIDES 25 PERCENT OR LESS OF THE TOTAL SEATING CAPACITY AND 300 OR FEWER SEATS, ALL WHEELCHAIR SPACES SHALL BE PERMITTED TO BE LOCATED ON THE MAIN LEVEL.

505.2.3 OPENNESS, EXCEPTION 1: MEZZANINES OR PORTIONS THEREOF ARE NOT REQUIRED TO BE OPEN TO THE ROOM IN WHICH THE MEZZANINES ARE LOCATED, PROVIDED THAT THE OCCUPANT LOAD OF THE AGGREGATE AREA OF THE ENCLOSED SPACE IS NOT GREATER THAN 10.

505.2.3 OPENNESS, EXCEPTION 1: MEZZANINES OR PORTIONS THEREOF ARE NOT REQUIRED TO BE OPEN TO THE ROOM IN WHICH THE MEZZANINES ARE LOCATED, PROVIDED THAT THE OCCUPANT LOAD OF THE AGGREGATE AREA OF THE ENCLOSED SPACE IS NOT GREATER THAN 10.