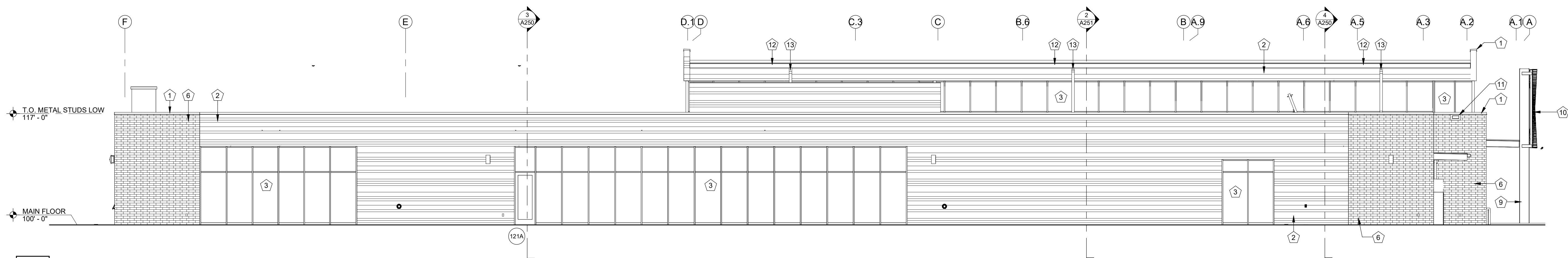
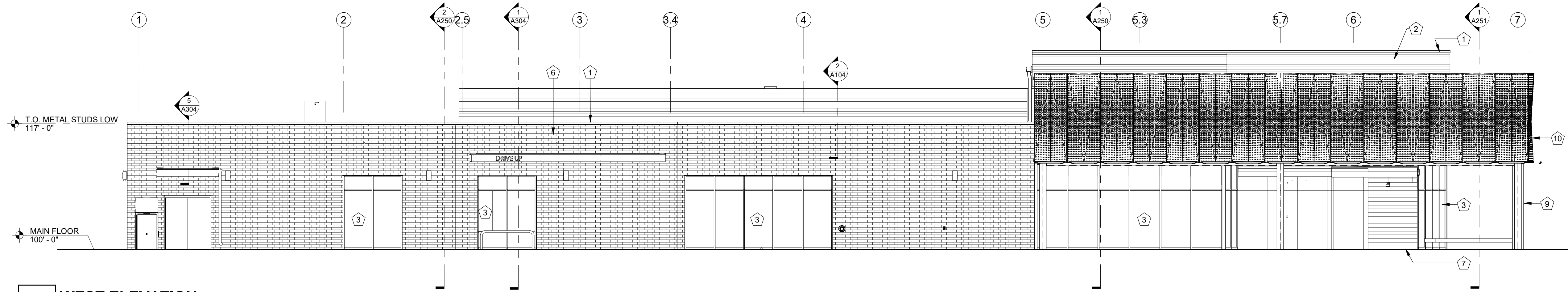


4 EAST ELEVATION
1/8" = 1'-0"

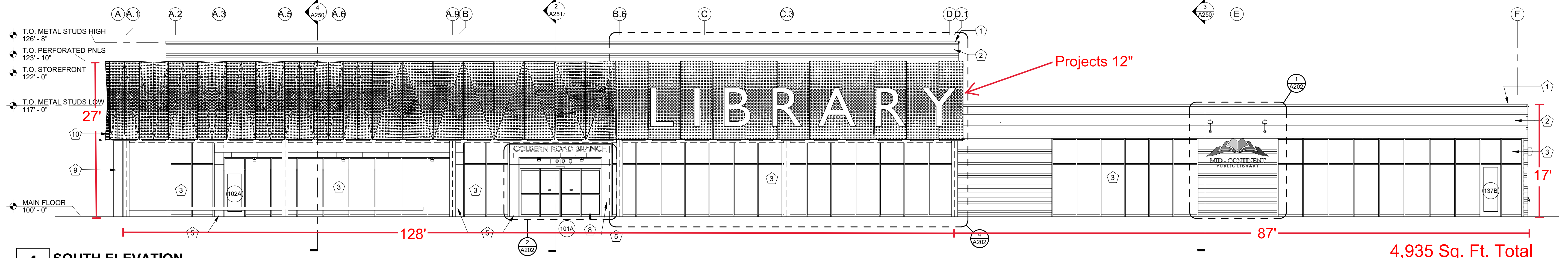
KEYNOTES	
1	PREFINISHED METAL PARAPET CAP OR ROOF EDGE TRIM
2	PREFINISHED VARIATED HORIZ MTL PANELS WITH STANDARD SHOP FAB CORNERS AND TRIM - SEE SPECS
3	WINDOWS, DOORS, DOOR FRAMES & STOREFRONT SEE DOOR & WINDOW SCHEDULES
4	MECHANICAL SCREEN WALL, SEE ROOF PLAN FOR MORE INFORMATION
5	COMPOSITE METAL PANELS - SEE SPEC
6	BRICK VENEER - SEE SPEC
7	FINISH GRADE - SEE SITE GRADING PLAN
8	AUTOMATIC SLIDING DOOR SYSTEM, REFER TO DOOR & WINDOW SCHEDULE, SEE SPECIFICATIONS FOR MORE INFORMATION
9	PAINTED EXPOSED STEEL COLUMNS - SEE STRUCTURAL
10	PERFORATED SCREEN WALL - SEE SECTIONS AND STRUCTURAL FOR MORE INFORMATION
11	THRU-WALL SCUPPER, SEE DETAIL 5/A104
12	7" DEEP X 7" WIDE PREFINISHED SEAMLESS SHEET METAL GUTTER
13	5"X5" PREFINISHED METAL DOWNSPOUT



3 NORTH ELEVATION
1/8" = 1'-0"



2 WEST ELEVATION
1/8" = 1'-0"



1 SOUTH ELEVATION
1/8" = 1'-0"

SAPP DESIGN ARCHITECTS
3750 S. Fremont Ave.
Springfield, MO 65804 417.877.9600

Sapp Design Associates Architects, P.C.
Missouri State Certificate of Authority #000607

helix.

1629 Walnut
Kansas City, MO 64108 816.300.0300

Helix Architecture + Design
Missouri State Certificate of Authority #000720

SPECIAL NOTICES
In the event the client consents to, allows, authorizes or approves of changes to any plans, specifications or other construction documents, and these changes are not approved in writing by the design professional, the client recognizes that such changes and the results thereof are not the responsibility of the design professional. Therefore, the client agrees to release the design professional from any liability arising from the construction, use or result of such changes. In addition, the client agrees to the fullest extent permitted by law, to indemnify and hold the design professional harmless from any damage, liability or cost (including reasonable attorney's fees and costs of defense) arising from such changes.
The personal seal of the registered Architect or Engineer shall be the legal equivalent of his signature whenever & wherever used, and the owner of the seal shall authenticate this sheet and the specification sections pertaining to this sheet. Responsibility shall be disclaimed for all other plans, specifications, estimates, reports or other documents or instruments relating to or intended to be used for any part or parts of the architectural project.

Mid-Continent Public Library
NEW BRANCH LIBRARY
Colbern Road Branch
1000 NE COLBERN ROAD
LEE'S SUMMIT, MISSOURI 64086
JACKSON COUNTY

Architect of Record
STATE OF MISSOURI
MICHAEL JAMES SAPP
NUMBER A-5051
REGISTERED ARCHITECT
12-23-2019

Michael James Sapp, Architect MO A-5051

Revision No.	Description	Date
Project No.	Date	Drawn
WP10	12-23-2019	JDL
Drawing No.	A200 ELEVATIONS	