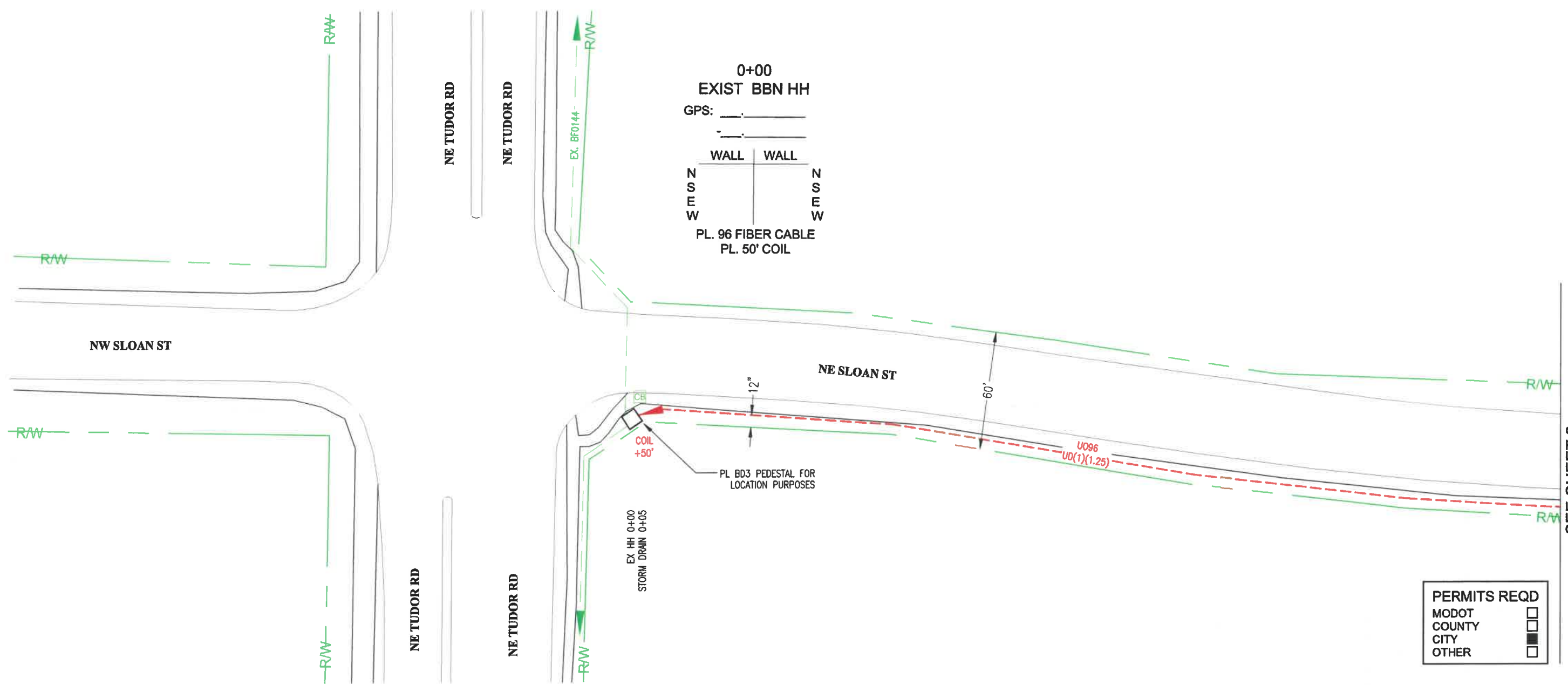


MUG 10554
NE Saint Luke's Blvd L5mo



0+00
EXIST BBN HH
GPS: _____

WALL WALL
N N
S S
E E
W W
PL. 96 FIBER CABLE
PL. 50' COIL

PERMITS REQD	
MODOT	<input type="checkbox"/>
COUNTY	<input type="checkbox"/>
CITY	<input type="checkbox"/>
OTHER	<input type="checkbox"/>

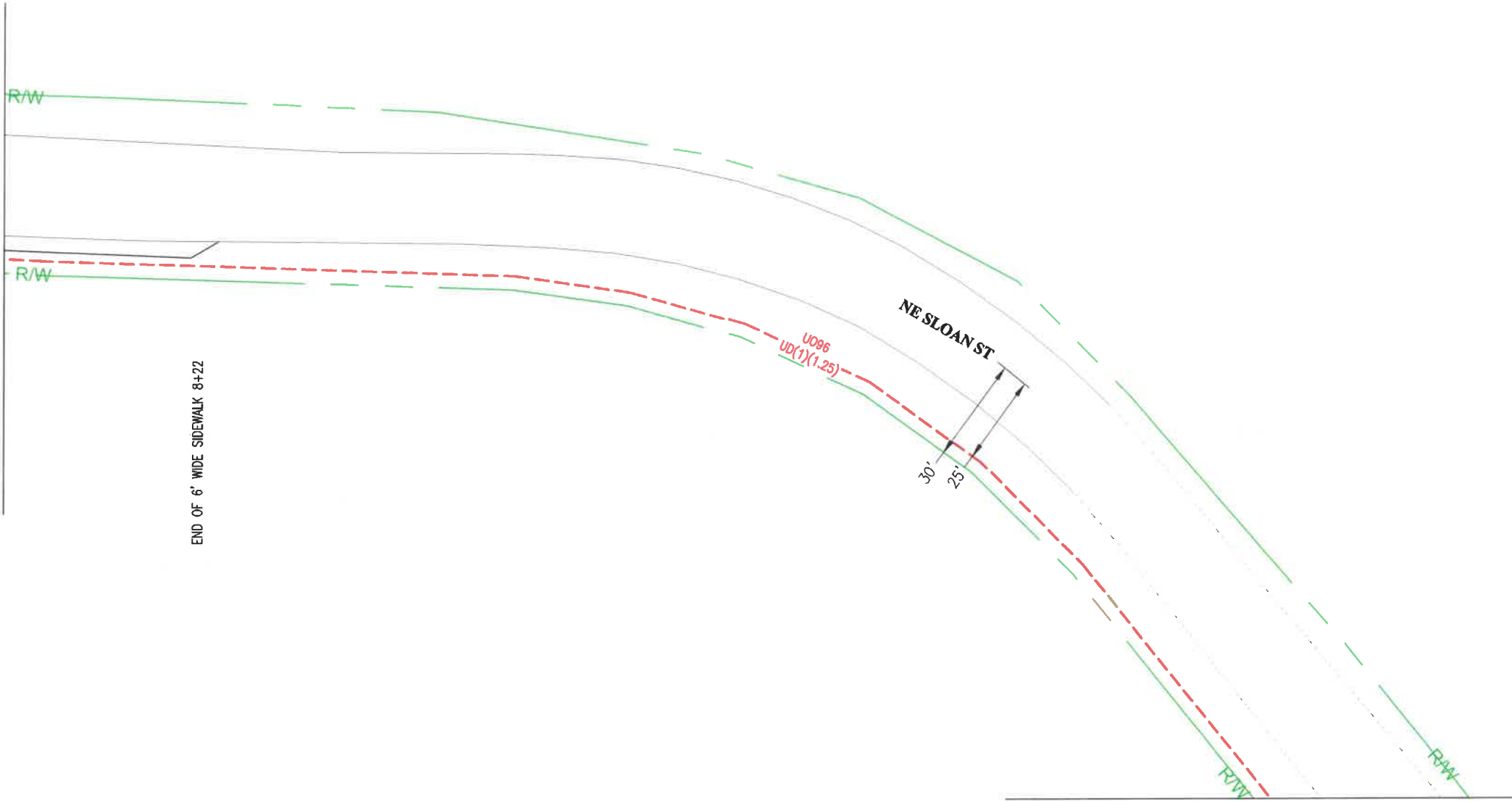
SEE SHEET 2

Z:\Shared\Projects\Bluebird\20-217 Bluebird St. Lukes East Lee Summit.dwg, November 09, 2020, 8:41AM, DILLON STILLMAN

POLE OR PED NO	POLE N/C	BD3	CO432 (10M)	BFO48	BFO144	BFO288	UO24	UO144	UO144IE	UO288	UO432	UD (1x1.25)	UD (1x2x1.5)	BM53	BM72	BM73	BM2(1)(6)	BM61	BM2C	BM21	SEBO4	HBFO(48)	HBFO(144)	WUD	HO-1	WUH	UH (24" x 36")	UH (30" x 48")	REVISE BY / DATE
EX HH		1															1		3				1		2	1			
TOTALS		1															1		3				1		2	1			

STAKED BY/DATE: CT&T 9/8/2020	AS-BUILT POSTED:	<p>800 NW Chipman Rd Lees Summit, MO 64063</p>		PROJECT:	TAX DISTRICT	PHONE: 816-361-8821 FAX: 816-361-8848 www.bluebirdnetwork.com	EXCHANGE: LEES SUMMIT, MO
DRAWN BY/DATE: CT&T 10/30/2020	NOT TO SCALE			ST. LUKE'S EAST LEE SUMMIT FIBER	WORK ORDER: 20-1004-56		ROUTE: ST. LUKE'S EAST LEE SUMMIT FIBER
APPROVED BY/DATE:					PAR/COUNTY: JACKSON		SHEET 1 OF 7



Z:\Shared\Projects\Bluebird\20-217 Bluebird St. Lukes East Lee Summit\CAD\20-127 Bluebird St. Lukes East Lee Summit.dwg, November 09, 2020, 8:41AM, DILLON STILLMAN



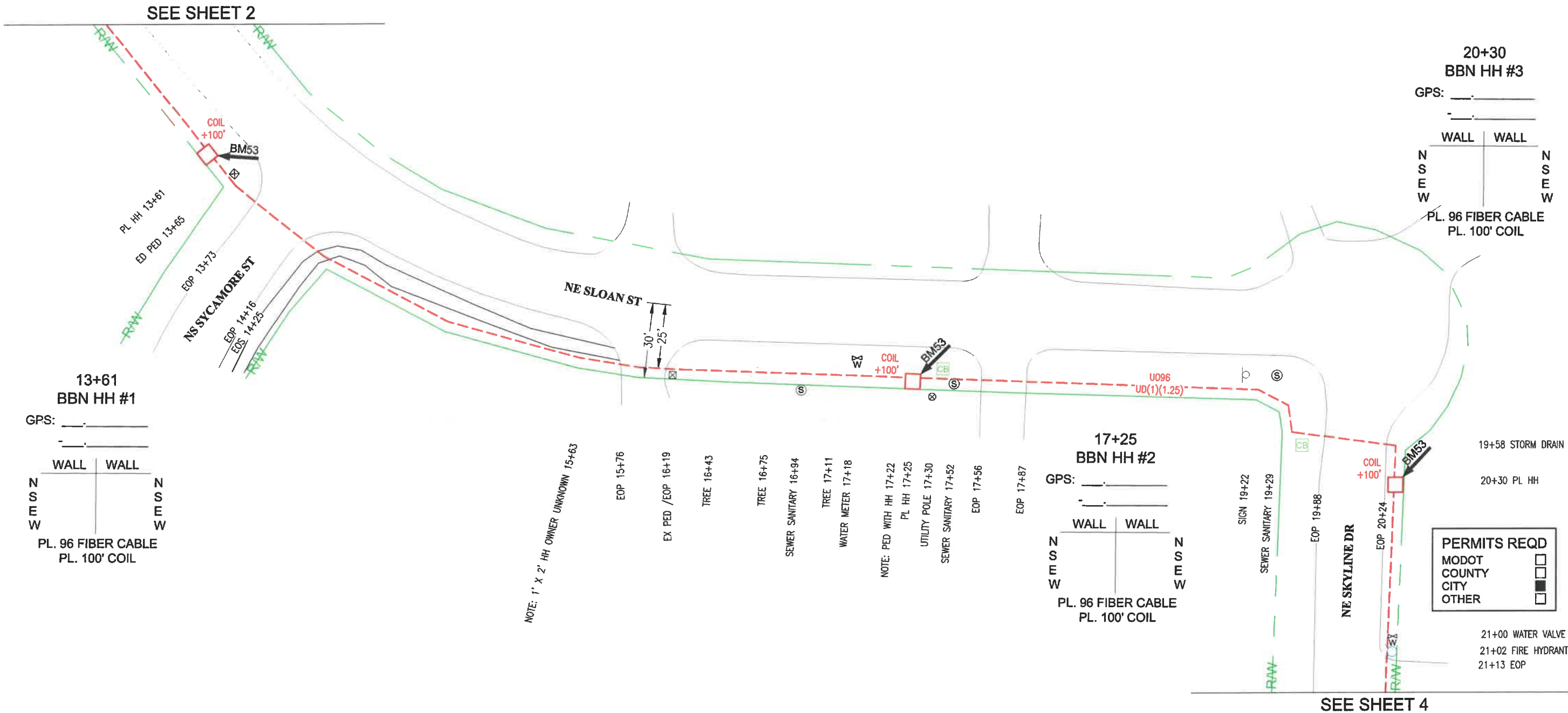
END OF 6' WIDE SIDEWALK 8+22

PERMITS REQD	
MODOT	<input type="checkbox"/>
COUNTY	<input type="checkbox"/>
CITY	<input checked="" type="checkbox"/>
OTHER	<input type="checkbox"/>

SEE SHEET 3

POLE OR PED NO	POLE N/C	BD3	CO432 (10M)	BFO48	BFO144	BFO288	UO24	UO144	UO144IE	UO288	UO432	UD (1x1.25)	UD (1x2x1.5)	BM53	BM72	BM73	BM2(6)(6)	BM61	BM2C	BM21	SEBO4	HBFO(48)	HBFO(144)	WUD	HO-1	WUH	UH (24" x 36")	UH (30" x 48")	REVISE BY / DATE			
TOTALS																																
STAKED BY/DATE: CT&T 9/8/2020 AS-BUILT POSTED:				 800 NW Chipman Rd Lees Summit, MO 64063					PROJECT: ST. LUKE'S EAST LEE SUMMIT FIBER				TAX DISTRICT		WORK ORDER: 20-1004-56		PHONE: 816-361-8821 FAX: 816-361-8848 www.bluebirdnetwork.com		EXCHANGE: LEES SUMMIT, MO													
DRAWN BY/DATE: CT&T 10/30/2020									PAR/COUNTY: JACKSON						ROUTE: ST. LUKE'S EAST LEE SUMMIT FIBER																	
APPROVED BY/DATE:									NOT TO SCALE								SHEET 2 OF 7															

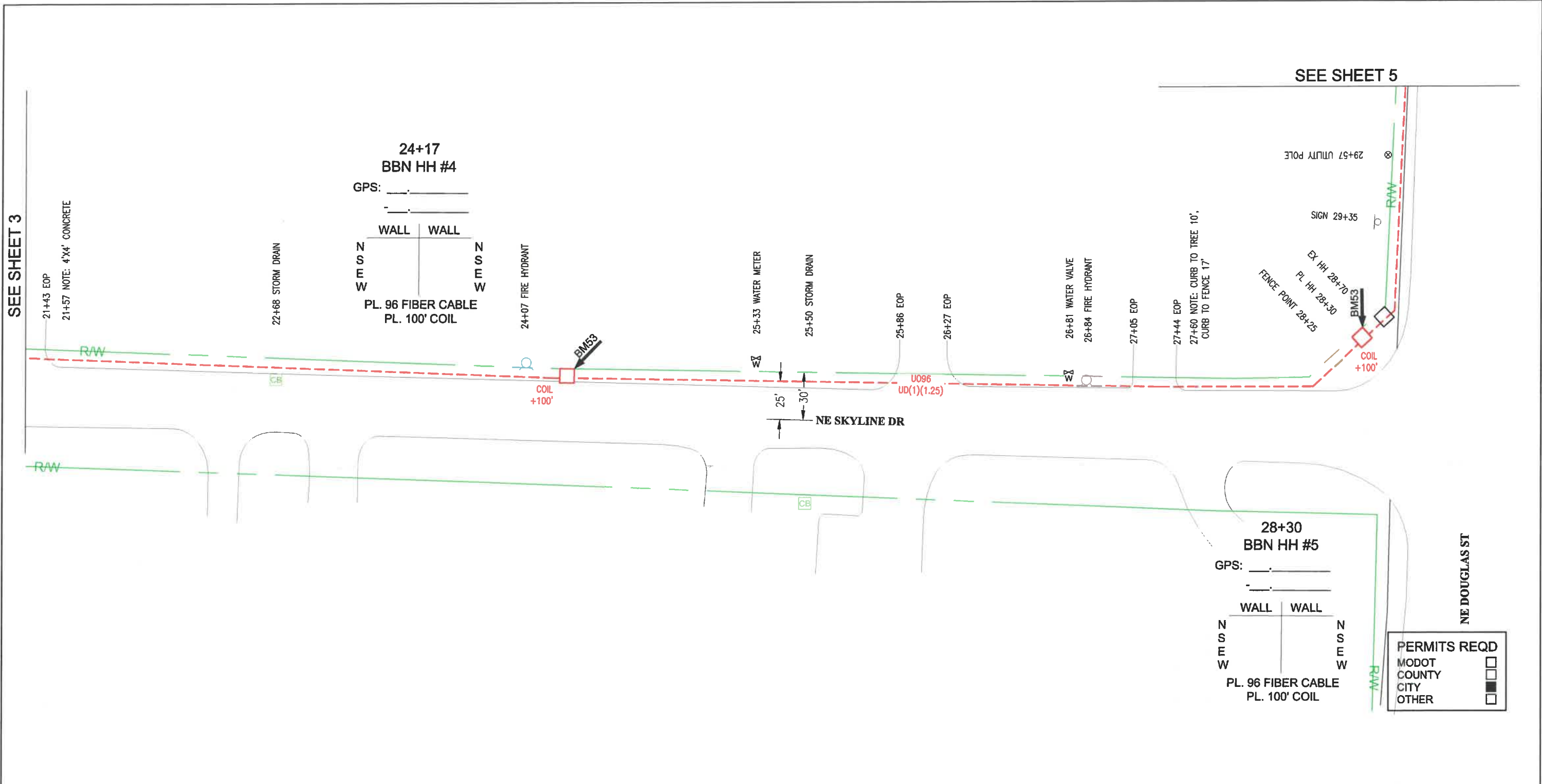
Z:\Shared\Projects\Bluebird\20-217 Bluebird St. Lukes East Lee Summit\CAD\20-127 Bluebird St. Lukes East Lee Summit.dwg, November 09, 2020, 8:41AM, DILLON STILLMAN



POLE OR PED NO	POLE N/C	BD3	CO432 (10M)	BFO48	BFO144	BFO288	U096	U0144	U0144IE	U0288	U0432	UD (1x1.25)	UD (1x2x1.5)	BM53	BM72	BM73	BM2(6)(8)	BM61	BM2C	BM21	SEBO4	HBFO(48)	HBFO(144)	WUD	HO-1	WUH	UH (24" x 36")	UH (30" x 48")	REVISE BY / DATE
HH #1							1511					1361		1													1		
							464					364		1													1		
							405					305		1													1		
TOTALS							2380					2030		3													3		

STAKED BY/DATE: CT&T 9/8/2020	AS-BUILT POSTED:	<p>800 NW Chipman Rd Lees Summit, MO 64063</p>		PROJECT:	TAX DISTRICT:	PHONE: 816-361-8821 FAX: 816-361-8848 www.bluebirdnetwork.com	EXCHANGE: LEES SUMMIT, MO
DRAWN BY/DATE: CT&T 10/30/2020	NOT TO SCALE			ST. LUKE'S EAST LEE SUMMIT FIBER	WORK ORDER: 20-1004-56		ROUTE: ST. LUKE'S EAST LEE SUMMIT FIBER
APPROVED BY/DATE:					PAR/COUNTY: JACKSON		SHEET 3 OF 7

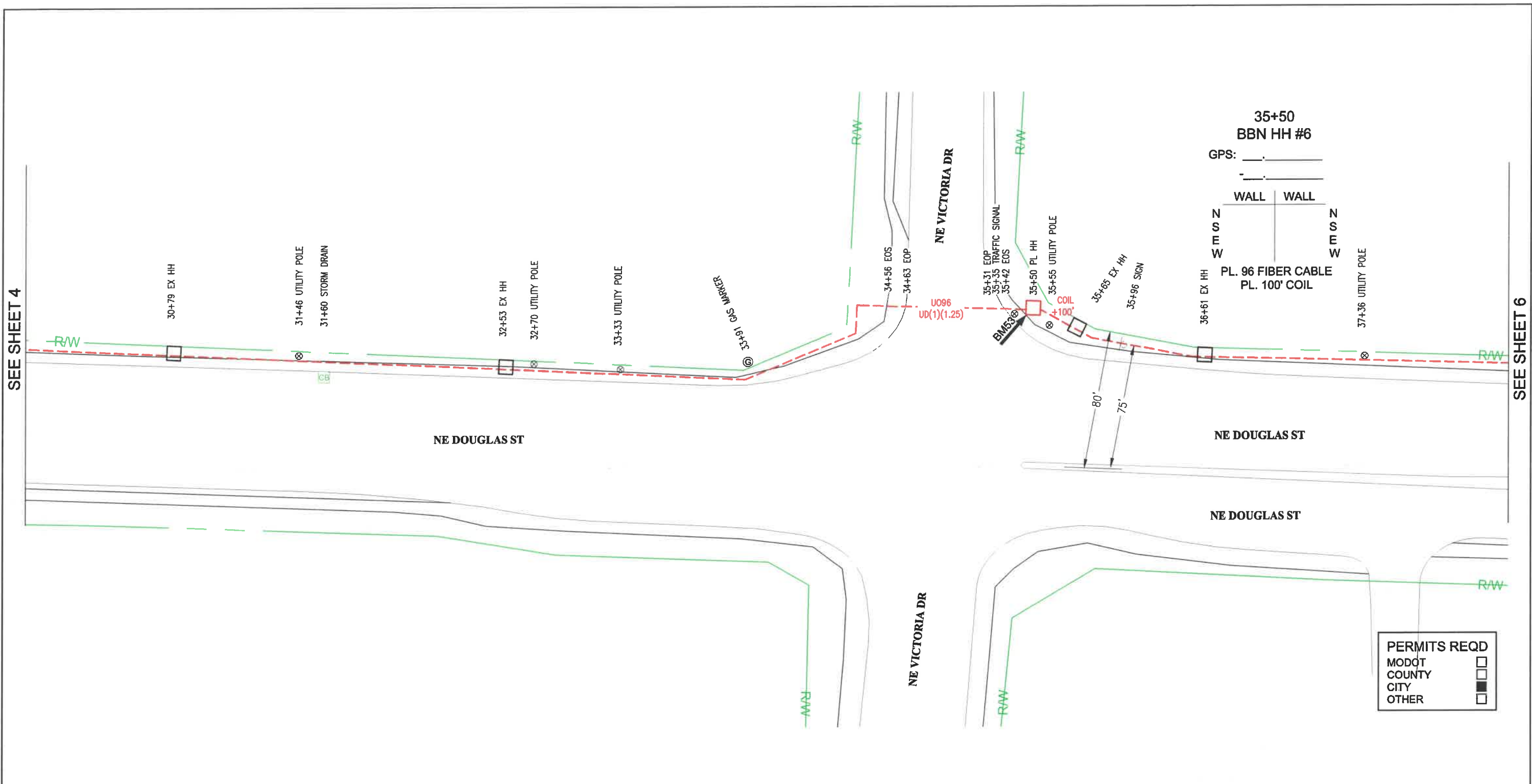
Z:\Shorad\Projects\Bluebird\20-217 Bluebird St. Lukes East Lee Summit.dwg, November 09, 2020, 8:41AM, DILLON STILLMAN



POLE OR PED NO	POLE N/C	BD3	CO432 (10M)	BFO48	BFO144	BFO288	U096	U0144	U0144E	U0288	U0432	UD (1x1.25)	UD (1x2x1.5)	BM53	BM72	BM73	BM2(6)(6)	BM61	BM2C	BM21	SEBO4	HBFO(48)	HBFO(144)	WUD	HO-1	WUH	UH (24" x 36")	UH (30" x 48")	REVISE BY / DATE
HH #4							487					387		1													1		
HH #5							513					413		1													1		
TOTALS							1000					800		2													2		

STAKED BY/DATE: CT&T 9/8/2020	AS-BUILT POSTED:	<p>800 NW Chipman Rd Lees Summit, MO 64063</p>		PROJECT: ST. LUKE'S EAST LEE SUMMIT FIBER	TAX DISTRICT:	PHONE: 816-361-8821 FAX: 816-361-8848 www.bluebirdnetwork.com	EXCHANGE: LEES SUMMIT, MO
DRAWN BY/DATE: CT&T 10/30/2020	NOT TO SCALE			WORK ORDER: 20-1004-56	ROUTE: ST. LUKE'S EAST LEE SUMMIT FIBER		
APPROVED BY/DATE:				PAR/COUNTY: JACKSON	SHEET 4 OF 7		

Z:\Share\Projects\Bluebird\20-217 Bluebird St. Lukes East Lee Summit.dwg, November 09, 2020, 8:41AM, DILLON STILLMAN



POLE OR PED NO	POLE N/C	BD3	CO432 (10M)	BFO48	BFO144	BFO288	UO24	UO96	UO144E	UO288	UO432	UD (1x1.25)	UD (1x2x1.5)	BM53	BM72	BM73	BM2(6)	BM61	BM2C	BM21	SEB04	HBFO(48)	HBFO(144)	WUD	HO-1	WUH	UH (24" x 36")	UH (30" x 48")	REVISE BY / DATE
HH #6								820				720		1													1		
TOTALS								820				720		1													1		

PERMITS REQD

MODOT

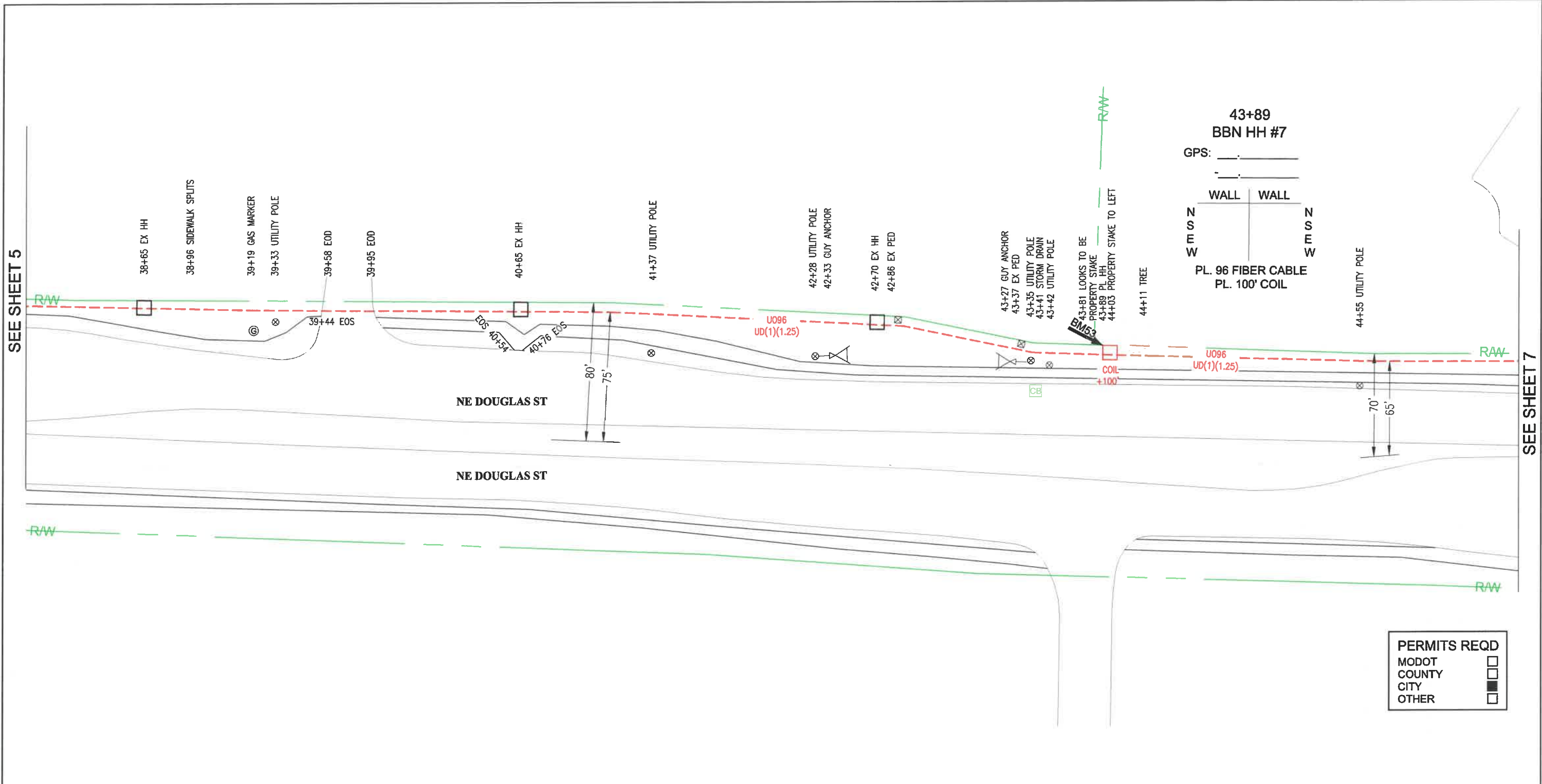
COUNTY

CITY

OTHER

STAKED BY/DATE: CT&T 9/8/2020	AS-BUILT POSTED:	<p>800 NW Chipman Rd Lees Summit, MO 64063</p>		PROJECT:	TAX DISTRICT:	PHONE: 816-361-8821 FAX: 816-361-8848 www.bluebirdnetwork.com	EXCHANGE: LEES SUMMIT, MO
DRAWN BY/DATE: CT&T 10/30/2020				ST. LUKE'S EAST LEE SUMMIT FIBER	WORK ORDER: 20-1004-56		ROUTE: ST. LUKE'S EAST LEE SUMMIT FIBER
APPROVED BY/DATE:	NOT TO SCALE				PAR/COUNTY: JACKSON		SHEET 5 OF 7

Z:\Shared\Projects\Bluebird\20-217 Bluebird St. Lukes East Lee Summit\CAD\20-127 Bluebird St. Lukes East Lee Summit.dwg, November 09, 2020, 8:41AM, DILLON STILLMAN

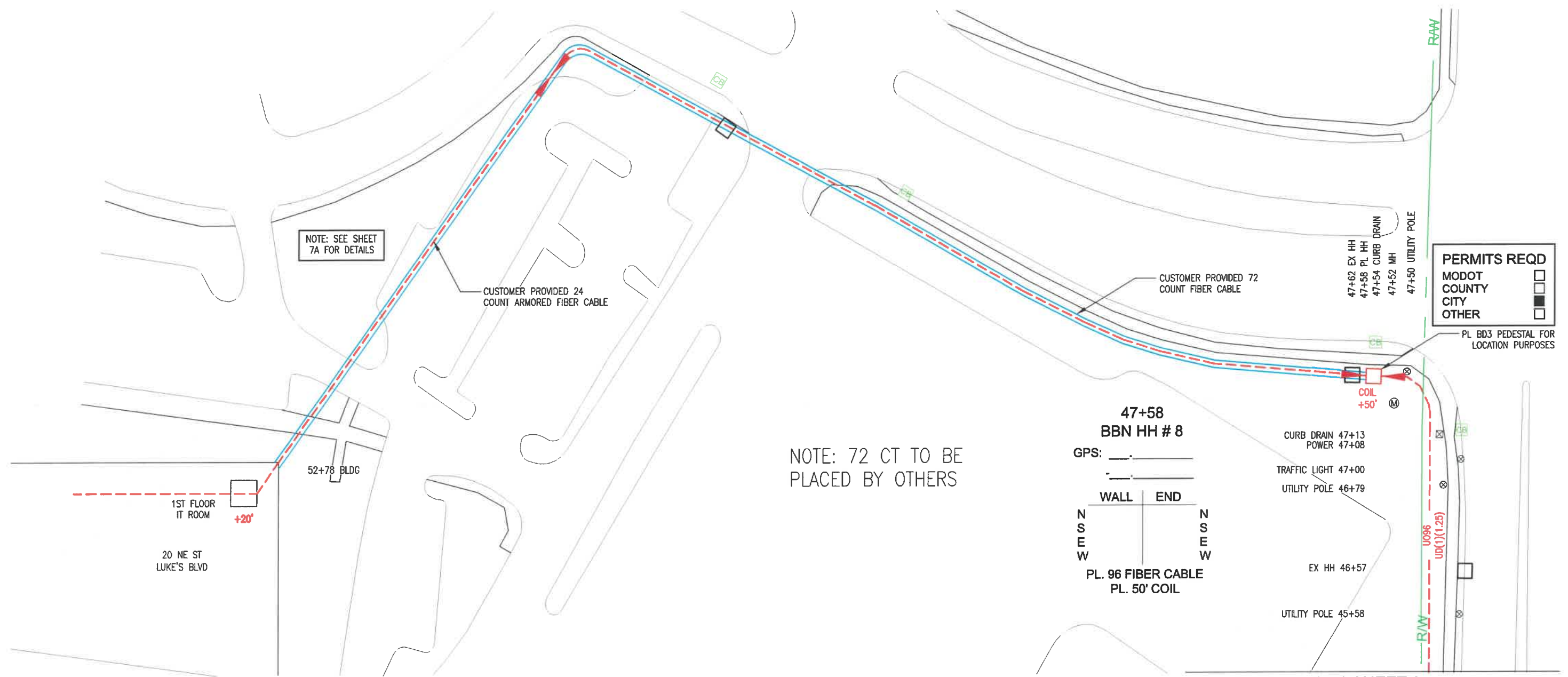


POLE OR PED NO	POLE N/C	BD3	CO432 (10M)	BFO48	BFO144	BFO288	U096	U0144	U0144IE	U0288	U0432	UD (1x1.25)	UD (1x2x1.5)	BM53	BM72	BM73	BM2(6)(8)	BM61	BM2C	BM21	SEBO4	HBFO(48)	HBFO(144)	WUD	HO-1	WUH	UH (24" x 36")	UH (30" x 48")	REVISE BY / DATE
HH #7							939					839	1														1		
TOTALS							939					839	1														1		

PERMITS REQD	
MODOT	<input type="checkbox"/>
COUNTY	<input type="checkbox"/>
CITY	<input type="checkbox"/>
OTHER	<input type="checkbox"/>

STAKED BY/DATE: CT&T 9/8/2020	AS-BUILT POSTED:	<p>800 NW Chipman Rd Lees Summit, MO 64063</p>		PROJECT: ST. LUKE'S EAST LEE SUMMIT FIBER	TAX DISTRICT	PHONE: 816-361-8821 FAX: 816-361-8848 www.bluebirdnetwork.com	EXCHANGE: LEES SUMMIT, MO
DRAWN BY/DATE: CT&T 10/30/2020	NOT TO SCALE				WORK ORDER: 20-1004-56		ROUTE: ST. LUKE'S EAST LEE SUMMIT FIBER
APPROVED BY/DATE:					PAR/COUNTY: JACKSON		SHEET 6 OF 7

Z:\Shorad\Projects\Bluebird\20-217 Bluebird St. Luke's East Lee Summit.dwg, November 09, 2020, 8:42AM, DILLON STILLMAN



POLE OR PED NO	POLE N/C	BD3	CO432 (10M)	BFO48	BFO144	UO6IE	UO72IE	UO72	UO96	UO288	UO432	UD (1x1.25)	UD (1x2x1.5)	BM53	BM72	BM73	BM2(§)(6)	BM61	BM2C	BM21	SEBO4	HBFO(72)	HBFO(96)	WUD	HO-1	WUH	UH (24" x 36")	UH (30" x 48")	REVISE BY / DATE
HH 8		1							419			369		1			1		2				1	1	4		1		
BLDG																													
TOTALS		1							419			369		1			1		2				1	1	4		1		

STAKED BY/DATE: CT&T 9/8/2020	AS-BUILT POSTED:	 800 NW Chipman Rd Lees Summit, MO 64063	 NORTH	PROJECT: ST. LUKE'S EAST LEE SUMMIT FIBER	TAX DISTRICT:	PHONE: 816-361-8821 FAX: 816-361-8848 www.bluebirdnetwork.com	EXCHANGE: LEES SUMMIT, MO
DRAWN BY/DATE: CT&T 10/30/2020	NOT TO SCALE			WORK ORDER: 20-1004-56	ROUTE: ST. LUKE'S EAST LEE SUMMIT FIBER		
APPROVED BY/DATE:	PAR/COUNTY: JACKSON			SHEET 7 OF 7			

