

A Library Sign Elevation - South Facade scale: 1/4" = 1'-0"



STAR SIGNS, LLC
801 EAST NINTH STREET
LAWRENCE, KANSAS 66044
P 785.842.4892 F 785.842.2947
WWW.STARSIGNSLLC.COM

MCPL Colbern WP 10
Lee's Summit, MO

Channel Letters
MCPL WP 10
Qty: 7

THIS DRAWING IS THE SOLE PROPERTY OF STAR SIGNS,
L.L.C., AND IS INTENDED FOR CUSTOMER APPROVAL ONLY.

REVISIONS:

1	10/15/2020	update drawings

☐ APPROVED

☐ APPROVED
AS NOTED

☐ REVISE AND
RESUBMIT

DATE

SIGNATURE

SP: VD PM: AF Dwg: JH

9976
Art #

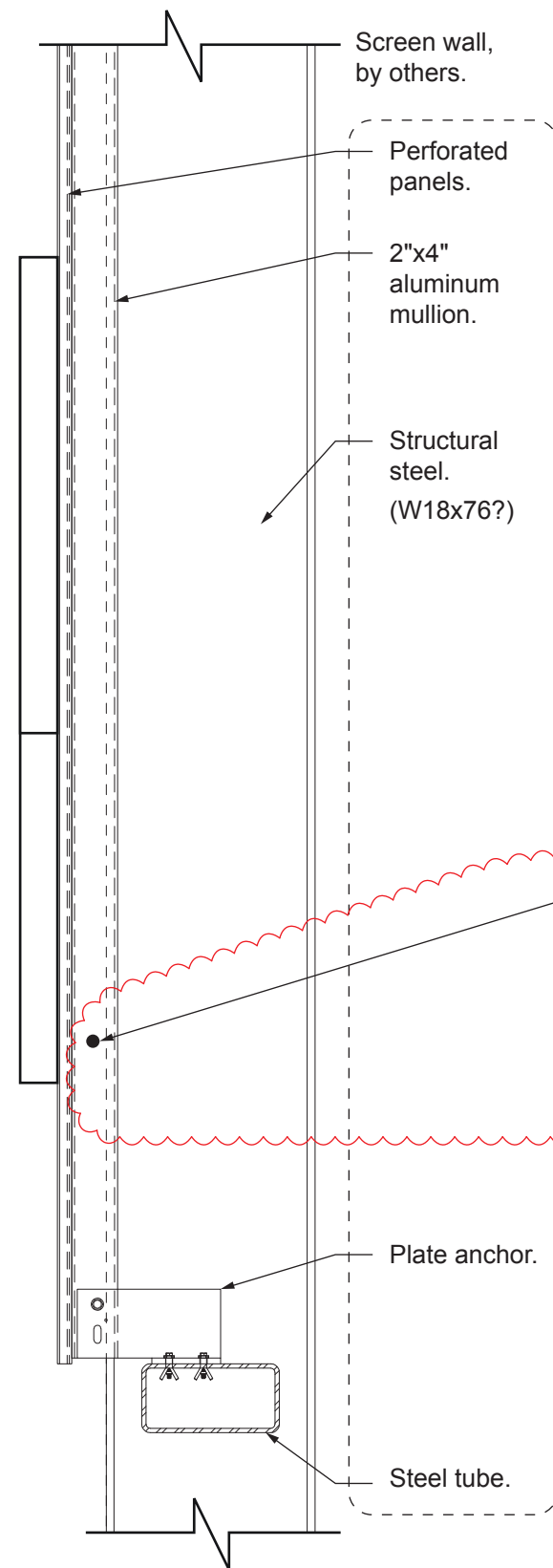
5950
SO #

PRINTED: 11 / 5 / 2020

FIRST PRINT: 7/22/2020

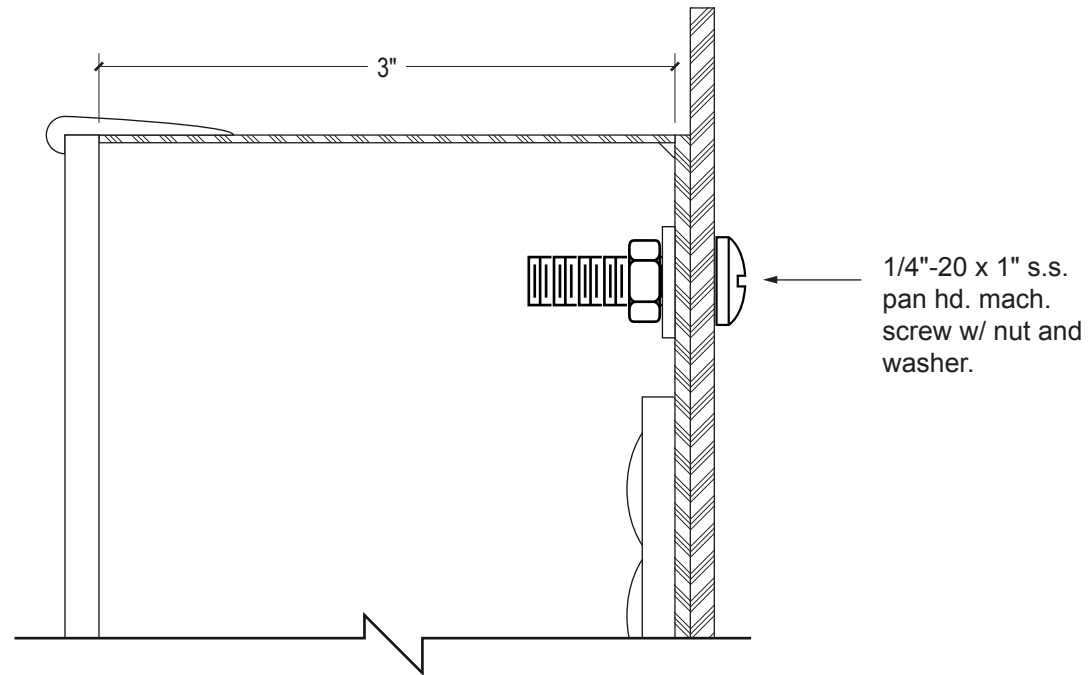
1.1

SHEET

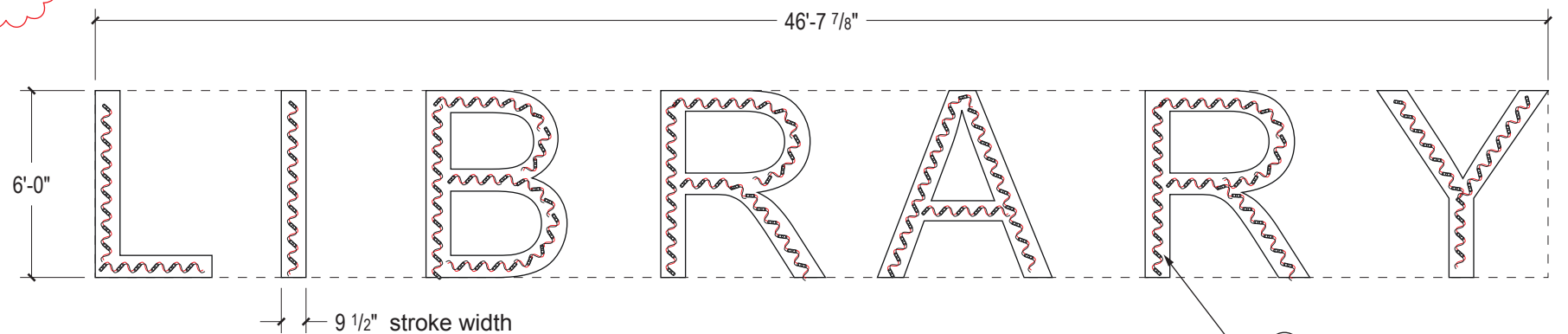


A Side View scale: 3/4" = 1'-0"

Typical at all vert. legs:
Drill hole and add grommets to protect cable.
Cable passes through support tube.
Hole can be 1.5" diameter or less.



B Letter Mounting Detail scale: 1:1



C South Facade Library Letters scale: 3/16" = 1'-0"

- ① 3" deep aluminum channel letter. .080" aluminum back with .040 aluminum returns are tack welded to back and sealed with clear silicone. Paint all visible surfaces satin white.
- ② .177 white polycarbonate with white trim cap.
- ③ LED, Hanley, White, Phoenix NRG PE-2, approx. 224 modules.
- ④ (2) PS12-100 power supplies, 4.0A/120V total.

Using 1/4-20 bolt from the rear, place washer and nuts inside of the letter. Coordinate letter pattern with perf. supplier.

③ approx. 224 mod.



STAR SIGNS, LLC
801 EAST NINTH STREET
LAWRENCE, KANSAS 66044
P 785.842.4892 F 785.842.2947
WWW.STARSIGNSLLC.COM

MCPL Colbern WP 10
Lee's Summit, MO

Channel Letters
MCPL WP 10
Qty: 7

THIS DRAWING IS THE SOLE PROPERTY OF STAR SIGNS, L.L.C., AND IS INTENDED FOR CUSTOMER APPROVAL ONLY.

REVISIONS:

1	10/15/2020	update drawings
2	11/5/2020	update wire routing

☐ APPROVED

☐ APPROVED AS NOTED

☐ REVISE AND RESUBMIT

DATE

SIGNATURE

SP: VD PM: AF Dwg: JH

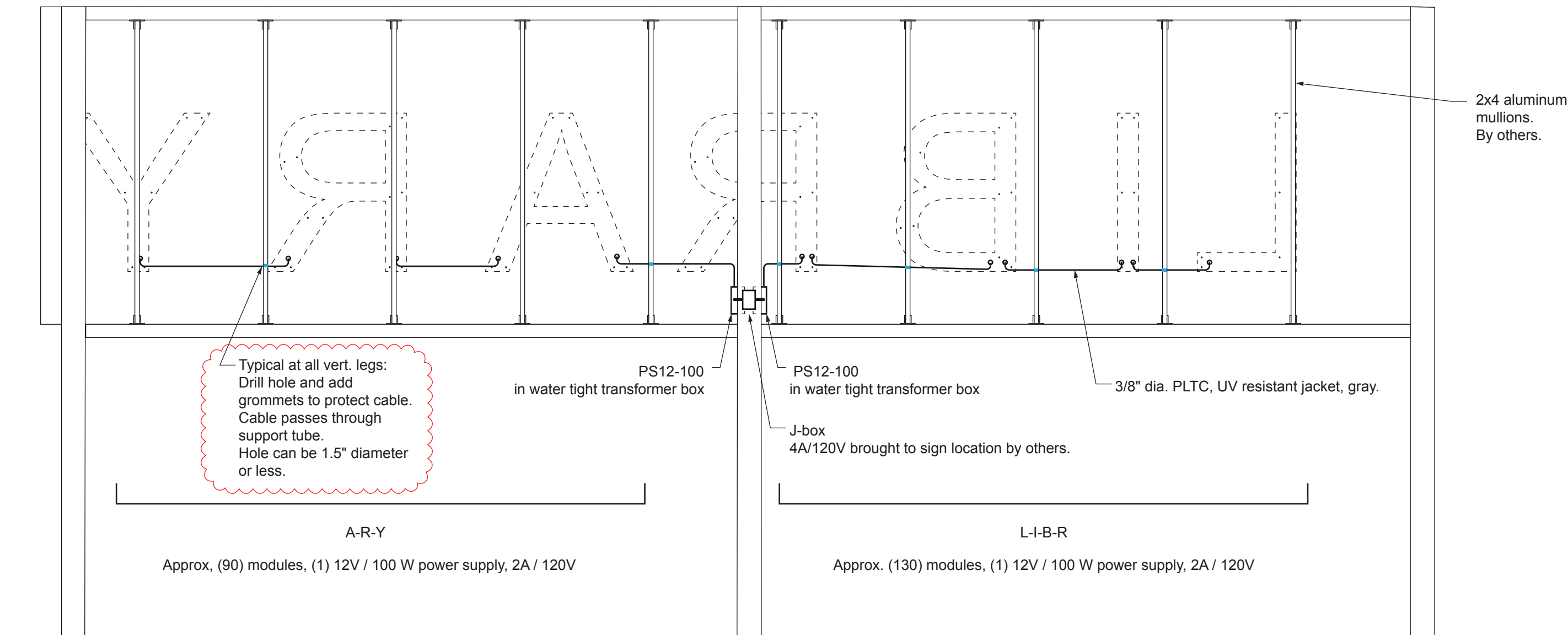
9976
Art #

5950
SO #

PRINTED: 11 / 5 / 2020

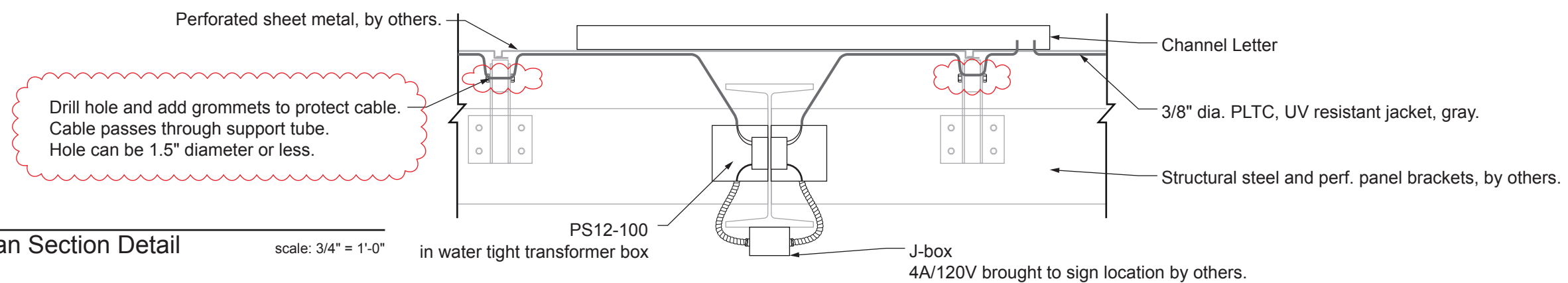
FIRST PRINT: 7/22/2020

1.2
SHEET



A Back View

scale: 1/4" = 1'-0"



B Plan Section Detail

scale: 3/4" = 1'-0"



STAR SIGNS, LLC
801 EAST NINTH STREET
LAWRENCE, KANSAS 66044
P 785.842.4892 F 785.842.2947
WWW.STARSIGNSLLC.COM

MCPL Colbern WP 10
Lee's Summit, MO

Channel Letters
MCPL WP 10
Qty: 7

THIS DRAWING IS THE SOLE PROPERTY OF STAR SIGNS, L.L.C., AND IS INTENDED FOR CUSTOMER APPROVAL ONLY.

REVISIONS:

1	10/15/2020	update drawings
2	11/5/2020	update wire routing

☐ APPROVED

☐ APPROVED AS NOTED

☐ REVISE AND RESUBMIT

DATE

SIGNATURE

SP: VD PM: AF Dwg: JH

9976
Art #

5950
SO #

PRINTED: 11 / 5 / 2020

FIRST PRINT: 7/22/2020

1.3
SHEET