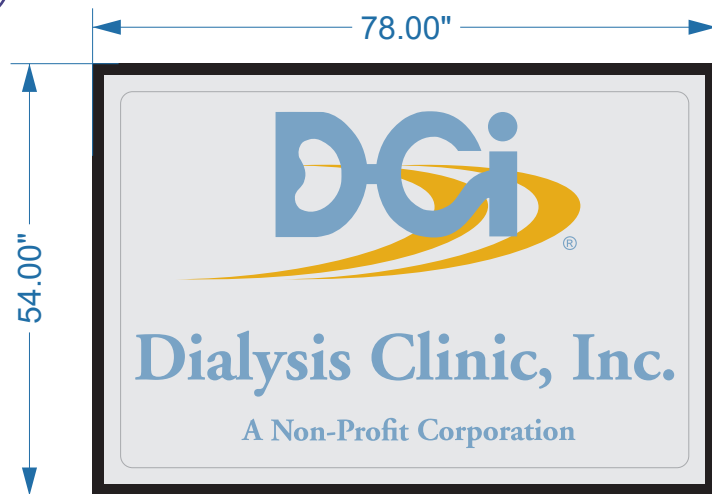




TOTAL SQ. FT. 29.25 EACH



1.5\"/>

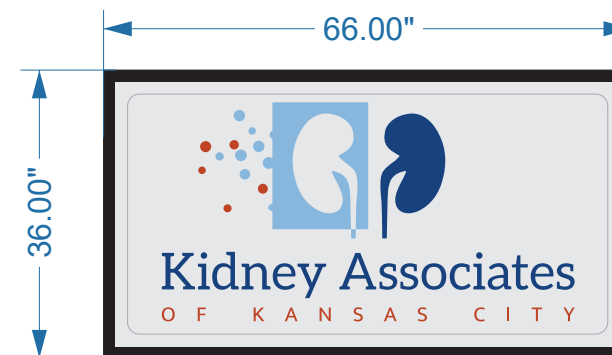
7\"/>

SIDE VIEW

East Elevation



TOTAL SQ. FT. 16.5

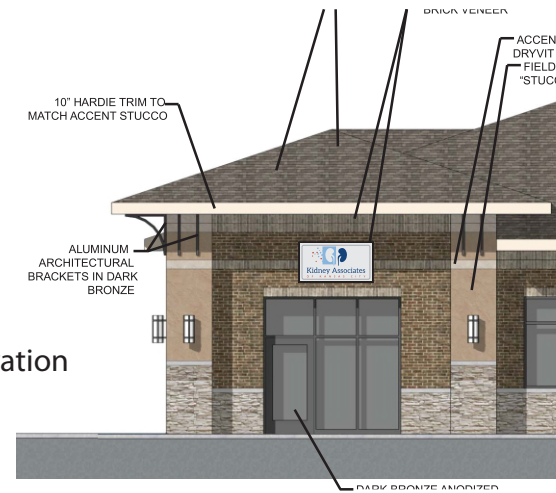


1.5\"/>

7\"/>

SIDE VIEW

East Elevation



NEED VECTOR
FOR KIDNEY ASSOCIATES



64 INDUSTRIAL PARK DRIVE
HENDERSONVILLE, TN 37075
TEL . 615.824.4870
FAX . 615.824.4662

www.awardindustries.com

THIS IS AN ORIGINAL DESIGN AND REMAINS THE EXCLUSIVE PROPERTY OF AWARD INDUSTRIES SIGNS & GRAPHICS, INC. IT IS NOT TO BE DUPLICATED OR REPRODUCED IN ANY MANNER WITHOUT WRITTEN CONSENT. DRAWING FEE OF \$500.00 WILL APPLY IF SIGN(S) ARE PURCHASED AT ANOTHER SIGN COMPANY.

CUSTOMER:

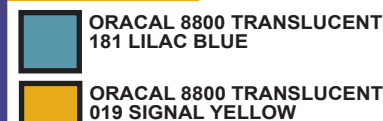
JOB NAME : DCI LEE'S SUMMIT BUILDING IDS
LAYOUT DATE: 8/26/20SC

DESCRIPTION:

1, 54" x 78" x 7" EXTRUDED ALUM. CABINET W. FORMED POLYCARBONATE FACE.
INTERNALLY ILLUMINATED WITH LEDS. 1.5" BLACK RETAINER.
1, 36" x 66" x 7" EXTRUDED ALUM. CABINET W. FORMED POLYCARBONATE FACE.
INTERNALLY ILLUMINATED WITH LEDS. 1.5" BLACK RETAINER.

DCI GRAPHICS: ORACAL TRANSLUCENT VINYL.
KAKC GRAPHICS: COLOR DIGITAL PRINT ON CLEAR VINYL

COLOR CHART:



CUSTOMER APPROVAL:

DATE:

THE ABOVE SIGNED PARTY HEREBY CONFIRMS THAT ALL DESIGN ELEMENTS REPRESENTED IN THE RENDERING ABOVE ARE CORRECT AND ACCURATE FOR THE PURPOSES OF PRODUCTION OR THE EXECUTION OF THE RELEVANT PROJECT.

FILE: 2020/D/DCI/LEES SUMMIT /BUILDING IDS DCI AND K

AK C.2.CDR

NOTE: DUE TO VARIANCES IN COLOR OR CALIBRATION OF COMPUTERS & PRINTERS, COLORS DO NOT ALWAYS PRINT 100% CORRECT. PLEASE REFER TO RELEVANT COLOR CHARTS FOR ACCURATE COLOR REPRESENTATIONS.