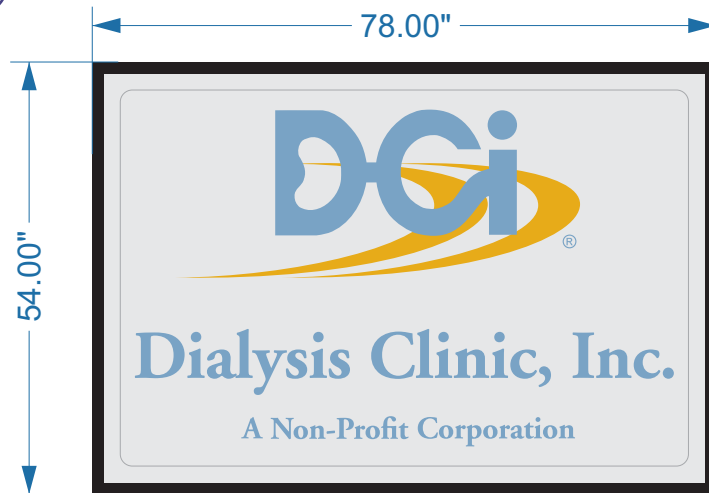




TOTAL SQ. FT. 29.25 EACH



1.5\"/>

7\"/>

SIDE VIEW



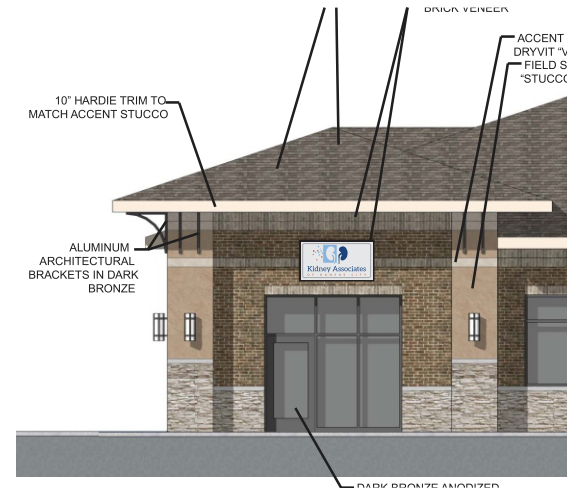
TOTAL SQ. FT. 16.5



1.5\"/>

7\"/>

SIDE VIEW



NEED VECTOR  
FOR KIDNEY ASSOCIATES

**AWARD**  
INDUSTRIES, INC.  
**SIGNS & GRAPHICS**  
64 INDUSTRIAL PARK DR.  
HENDERSONVILLE, TN 37075  
TEL. 615.824.4870  
FAX. 615.824.4662

**THIS IS AN ORIGINAL DESIGN AND REMAINS THE EXCLUSIVE PROPERTY OF AWARD INDUSTRIES SIGNS & GRAPHICS, INC. IT IS NOT TO BE DUPLICATED OR REPRODUCED IN ANY MANNER WITHOUT WRITTEN CONSENT. DRAWING FEE OF \$500.00 WILL APPLY IF SIGN(S) ARE PURCHASED AT ANOTHER SIGN COMPANY.**

**CUSTOMER:**

JOB NAME : DCI LEE'S SUMMIT BUILDING ID'S  
LAYOUT DATE: 8/26/20SC

**DESCRIPTION:**

1, 54" x 78" x 7" EXTRUDED ALUM. CABINET W. FORMED POLYCARBONATE FACE.  
INTERNALLY ILLUMINATED WITH LEDS. 1.5" BLACK RETAINER.  
1, 36" x 66" x 7" EXTRUDED ALUM. CABINET W. FORMED POLYCARBONATE FACE.  
INTERNALLY ILLUMINATED WITH LEDS. 1.5" BLACK RETAINER.

DCI GRAPHICS: ORACAL TRANSLUCENT VINYL.  
KAKC GRAPHICS: COLOR DIGITAL PRINT ON CLEAR VINYL

**COLOR CHART:**

ORACAL 8800 TRANSLUCENT  
181 LILAC BLUE

ORACAL 8800 TRANSLUCENT  
019 SIGNAL YELLOW



COLOR DIGITAL PRINT  
ON CLEAR VINYL

NOTE: DUE TO VARIANCES IN COLOR CALIBRATION OF COMPUTERS & PRINTERS, COLORS DO NOT ALWAYS PRINT 100% CORRECT. PLEASE REFER TO RELEVANT COLOR CHARTS FOR ACCURATE COLOR REPRESENTATIONS.

**CUSTOMER APPROVAL:**

DATE:

THE ABOVE SIGNED PARTY HEREBY CONFIRMS THAT ALL DESIGN ELEMENTS REPRESENTED IN THE RENDERING ABOVE ARE CORRECT AND ACCURATE FOR THE PURPOSES OF PRODUCTION OR THE EXECUTION OF THE RELEVANT PROJECT.