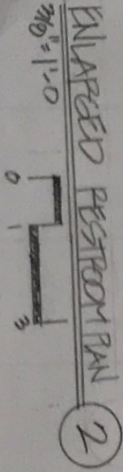
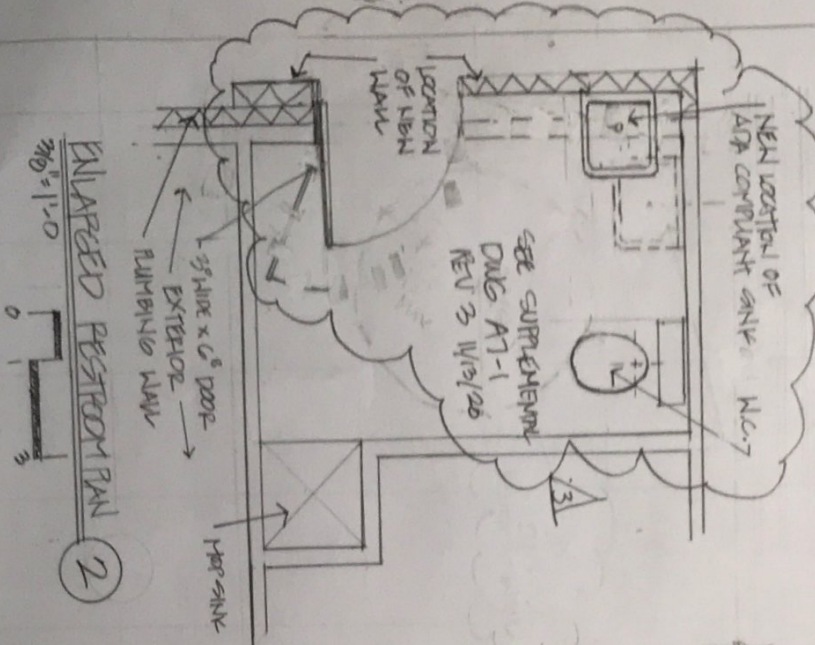


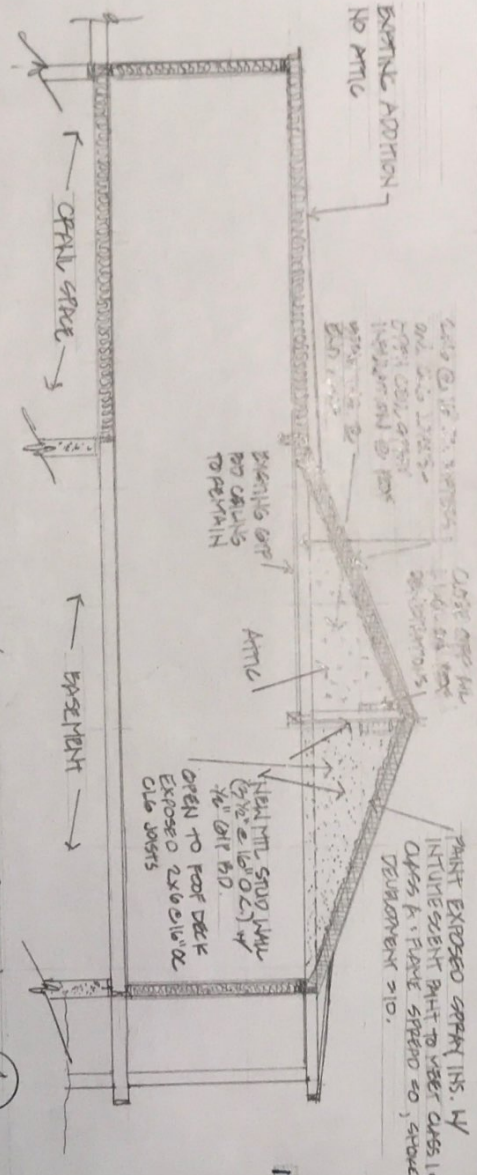
# CEILING / ATTIC / NB NOTES

1. POOF LINE - 3/16" SHED 105 OPEN-CELL 5.5" E-2000 (MIN)
2. CABLE / WAYS - ONE SHED 105 OPEN-CELL 5.5" THICK E-2000 (MIN), PLUS 7/8" INTEREST PAINT - NO-BLOCK, INC, PLUS 7/8" WATER-BASE PUN COATING COMPLIANT W/ 12, 14 AND 15 REGULATIONS - INTERIOR FINISH SPECIFICATION CLASS 1 OR CLASS A PIPE SPEEDS = 0 and SPOKE DEVELOPMENT = 10.
3. INTEREST PAINT - NO-BLOCK, INC, PLUS 7/8" WATER-BASE PUN COATING COMPLIANT W/ 12, 14 AND 15 REGULATIONS - INTERIOR FINISH SPECIFICATION CLASS 1 OR CLASS A PIPE SPEEDS = 0 and SPOKE DEVELOPMENT = 10.

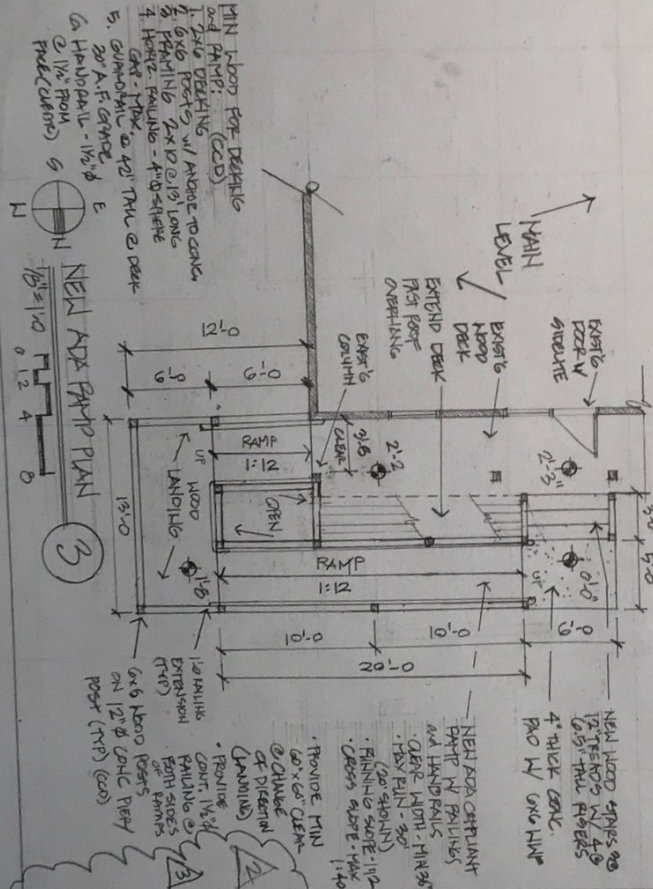


RELEASE FOR  
CONSTRUCTION  
AS NOTED ON PLANS REVIEW  
DEVELOPMENT SERVICES  
LEE'S SUMMIT, MISSOURI

11/13/2020



## ATTIC / OPEN CEILING SECTION



REVISION 2 10/31/20  
ADDED SHEET  
REV 3 11/13/20

THE SOCIAL SALON and SPA  
801 SW OUTHAM PKWY  
LEE'S SUMMIT, MO 64081

MARK R DEATON, ARCHITECT  
4409 SE SECRETARIAT DR.  
LEE'S SUMMIT, MO 64081  
EX. 401-9050  
ARCH LICENSE - MO A522

