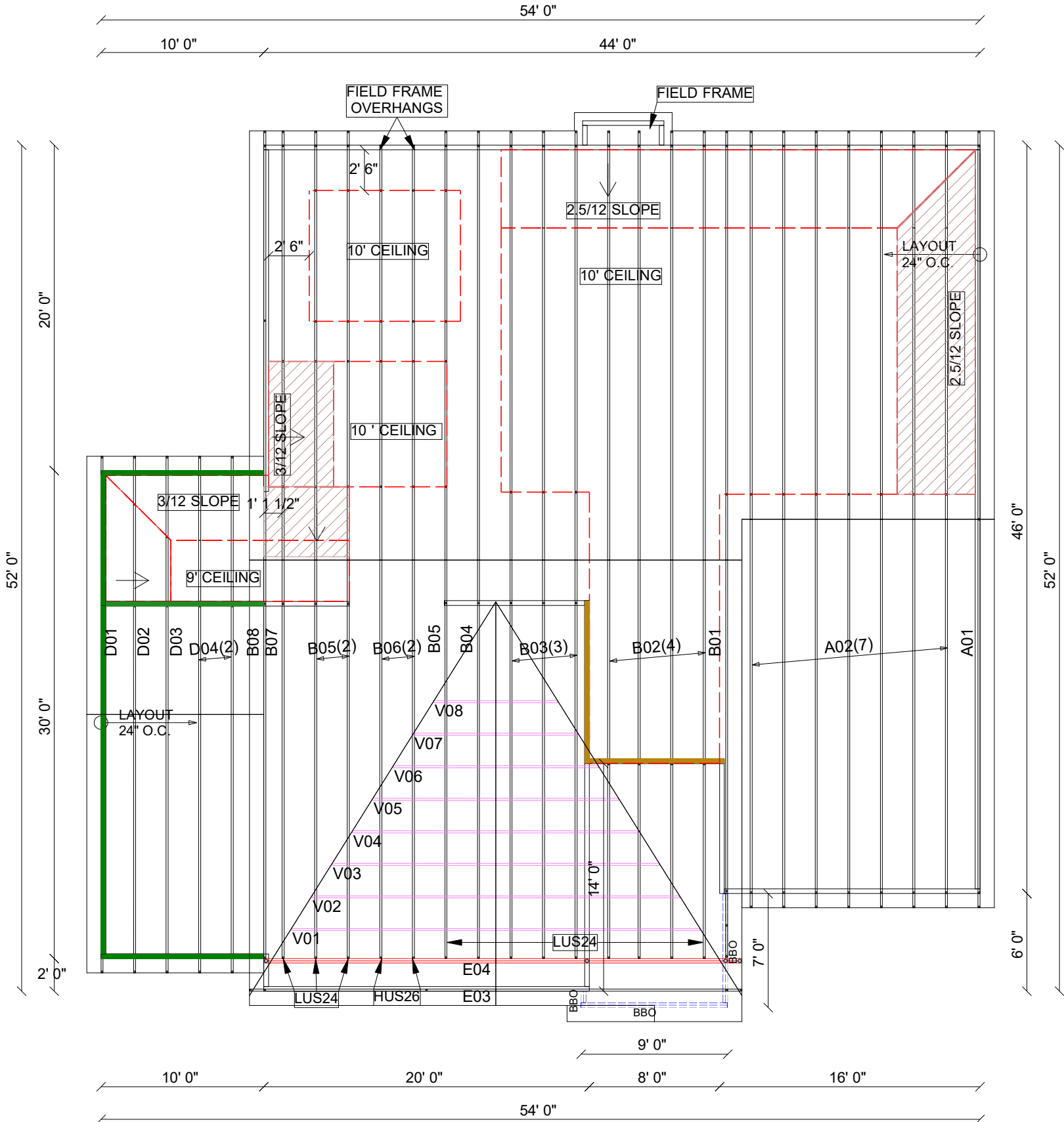


DO NOT CUT, DRILL, NOTCH, OR OTHERWISE DAMAGE TRUSSES. Contact your BFS Representative for assistance PRIOR TO modifying any truss. **Espanol - (NO CORTE, PERFORA, HAGA MUESCAS O DANE DE CUALQUIER OTRA MANERA LAS TRUSSES (CERCHAS DE MADERA). Contacte a su representante de BFS para asistencia ANTES de realizar cualquier modification.)**

- This Truss Placement Diagram is intended to serve as a guide for truss installation. This Diagram has been prepared by a Truss Technician and is not an engineered drawing.
 - The responsibilities of the Owner, Building Designer, Contractor, Truss Designer, and Truss Manufacturer shall be as defined by the TPI 1 National Standard.
 - The wood components shown on this diagram are to be used in dry service (moisture content<19%) and non-toxic environmental applications. The metal plates and hangers are galvanized to the G60 Standard unless noted otherwise.
 - Refer to the Truss Design Drawings for specific information about each individual truss design.
 - The Truss Technician shall provide Truss-to-Truss Connection Requirements. Any special or other connection shall be the responsibility of the Building Designer.
 - The Truss Placement Diagram and Truss Design Drawings are the property of Builders FirstSource and may not be reused or reproduced in part or in total under any circumstances without prior written authorization.
 - In some cases, field framing may be required to achieve the final appearance shown on the Construction Documents.
 - Field framing, including valley rafters, installed over roof trusses shall have a knee brace from the rafter to the truss top chord at intervals of 48" on center (O.C.) or less. Stagger knee braces from adjacent rafters such that the load is distributed uniformly over multiple truss locations and not concentrated at one location or along one truss.
 - Truss Top Chords shall be fully sheathed or have lateral bracing (purlins) spaced at 24" O.C. or less. Truss Bottom Chord Bracing shall not exceed the maximum shown on the Truss Design Drawing. Field framed bottom chord floor or ceiling attachments shall be spaced at 24" O.C. or less. Proper Bracing prevents buckling of individual truss members due to design loads.
 - This Placement Diagram is based upon the supporting structure being structurally adequate, dimensionally correct, square, plumb, and level to adequately support the trusses. The foundation design, structural member sizing, load transfer, bearing conditions, and the structure's compliance with the applicable building code are the responsibility of the Owner, Building Designer, and Contractor.
 - If Piggyback Trusses are included in this project, refer to the Mitek Piggyback Connection Detail applicable for the project details and wind load category.
 - The Contractor shall follow the SBCA TTB Partition Separation Prevention and Solutions for truss attachment to non-load bearing walls and carefully complete these details to avoid gypsum wall board related issues.
- WARNING:**
TRUSSES MUST BE BRACED DURING INSTALLATION. FAILURE TO DO SO MAY RESULT IN INJURY OR DEATH. **Espanol - (TRUSSES (CERCHAS) DEBERAN TENER UN SOPORTE DURANTE LA INSTALACION. NO HACERLO PODRIA RESULTAR EN LESIONES O MUERTE.)**
- Trusses shall be installed in a safe manner meeting all code, local, OSHA, TPI, and BCSI Specifications. Failure to follow these specifications may result in injury or death.
 - Buildings under construction are vulnerable to high winds and present a possible safety hazard. The Contractor is responsible for recognizing adverse weather conditions and shall take appropriate action to prevent injury or death.
- 3. BCSI INSTRUCTIONS SHALL BE FOLLOWED:**
BCSI-B1 = Safe Truss Handling and Installation
BCSI-B2 = Installation and Temporary Restraint
BCSI-B3 = Permanent Restraint
BCSI-B4 = Safe Construction Loading
BCSI-B5 = Truss Damage and Modification Guidelines
BCSI-B7 = Floor Truss Installation
BCSI-B8 = Toe-Nailed Connections
BCSI-B9 = Multi-Ply Girders
BCSI-B10 = Post Frame Truss Installation
BCSI-B11 = Fall Protection
4. Follow TPI Requirements for Long Span Trusses (>60').



FRONT TO BACK PITCH 5/12
SOFFIT DESIGNED FOR 10-1/2"
HEEL HEIGHT 6-3/16"

SIDE TO SIDE PITCH 8/12
SOFFIT DESIGNED FOR 10-1/2"
HEEL HEIGHT 6-7/8"

WALL HEIGHT 9' 1-1/8"
EXTERIOR WALL 2X4

BOX VAULTS/COFFERS AT BEDROOM #1,
GREAT ROOM, DINING ROOM, KITCHEN, & FOYER

UNLESS NOTED OTHERWISE
SEE LAYOUT FOR INFORMATION
DIFFERENT FROM ABOVE STANDARDS

Roof Plane
Hip Lines,0
Horizontal Overhang Lines,86.21
Raked Overhang Lines,253.92
Ridge Lines,1,82.43
Roof Area,3003.07
Valley Lines,60.53

HNGR	QTY	CARRIED MBR
LUS24	12	B02-B05, B07
HUS26	2	B06
H2.5A	100	ALL ROOF TRUSSES TO BE CONNECTED TO THE TOP PLATE WITH H2.5A HURRICAN CLIPS AND/OR ANY GIRDER UPLIFT OR SPECIAL UPLIFT NOTED WITH APPROPRIATE CONNECTOR.

WALL HEIGHTS	
	Stick framed down by others
	10-1-2
	8-1-2

RESIDENTIAL ENGINEERING SERVICES, LLC
SHOP DRAWING / SUBMITTAL REVIEW

APPROVED

SUBMITTAL WAS REVIEWED FOR DESIGN CONFORMITY
AND GENERAL CONFORMANCE TO CONTRACT
DOCUMENTS ONLY. THE CONTRACTOR IS RESPONSIBLE
FOR CONFIRMING AND CORRELATING DIMENSIONS AT
JOBSITE FOR TOLERANCE, CLEARANCE, QUANTITIES,
FABRICATION PROCESSES AND
TECHNIQUES OF CONSTRUCTION, COORDINATION OF
HIS OR HER WORK WITH OTHER TRADES AND FULL
COMPLIANCE WITH CONTRACT DOCUMENTS.

REVIEWED BY:
RESIDENTIAL ENGINEERING SERVICES, LLC

11/19/20
Brad A. Huxol, P.E.

RELEASE FOR
CONSTRUCTION
AS NOTED ON PLANS REVIEW
DEVELOPMENT SERVICES
LEE'S SUMMIT, MISSOURI

11/12/2020

DESIGN LOADS:

25 PSF TCLL
10 PSF TCDD
10 PSF BCDD

PROPER HANDLING OF TRUSSES SHALL BE THE RESPONSIBILITY OF THE INSTALLATION CREW AT THE JOBSITE. TEMPORARY AND PERMANENT BRACING FOR HOLDING TRUSSES PLUMB AND FOR RESISTING LATERAL FORCES SHALL BE DESIGNED AND INSTALLED BY OTHERS. NO LOADS OTHER THAN THE INSTALLERS ARE TO BE APPLIED TO TRUSSES UNTIL AFTER ALL BRACING AND FASTENING IS COMPLETED. AT NO TIME SHALL CONCENTRATED LOADS GREATER THAN DESIGN LOADS BE APPLIED TO THE TRUSSES. ALL TRUSS TO FRAMING CONNECTIONS ARE RECOMMENDATIONS ONLY AND NEED TO BE SPECIFIED BY THE BUILDING DESIGNER. TRUSSES ARE CAPABLE OF BEING MOVED (+/-) 4in. EITHER DIRECTION

WWW.BLDR.COM

Builders
FirstSource



JOB No.	2523899	CLAYTON PROPERTIES GROUP INC - SUMMIT HOMES
DESCRIPTION	CLAYTON PROPERTIES GROUP INC - SUMMIT HOMES	4 WOODSIDE RIDGE
JOB ADDRESS	CLAYTON PROPERTIES GROUP INC - SUMMIT HOMES	TBA
CITY	CLAYTON PROPERTIES GROUP INC - SUMMIT HOMES	VICTOR
DESIGNER	CLAYTON PROPERTIES GROUP INC - SUMMIT HOMES	10/23/2020
DATE	CLAYTON PROPERTIES GROUP INC - SUMMIT HOMES	

ROOF
TRUSS LAYOUT

PAGE
1 of 1