

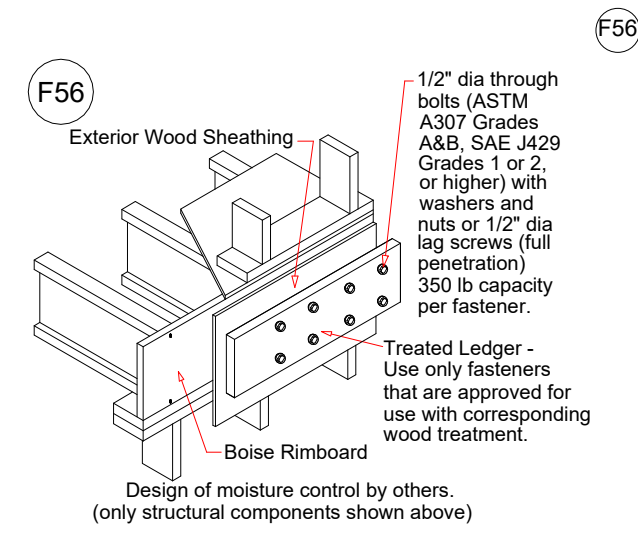
Walker Custom Homes 514 NW Main Street

Recommended 1st Floor Placement Plan

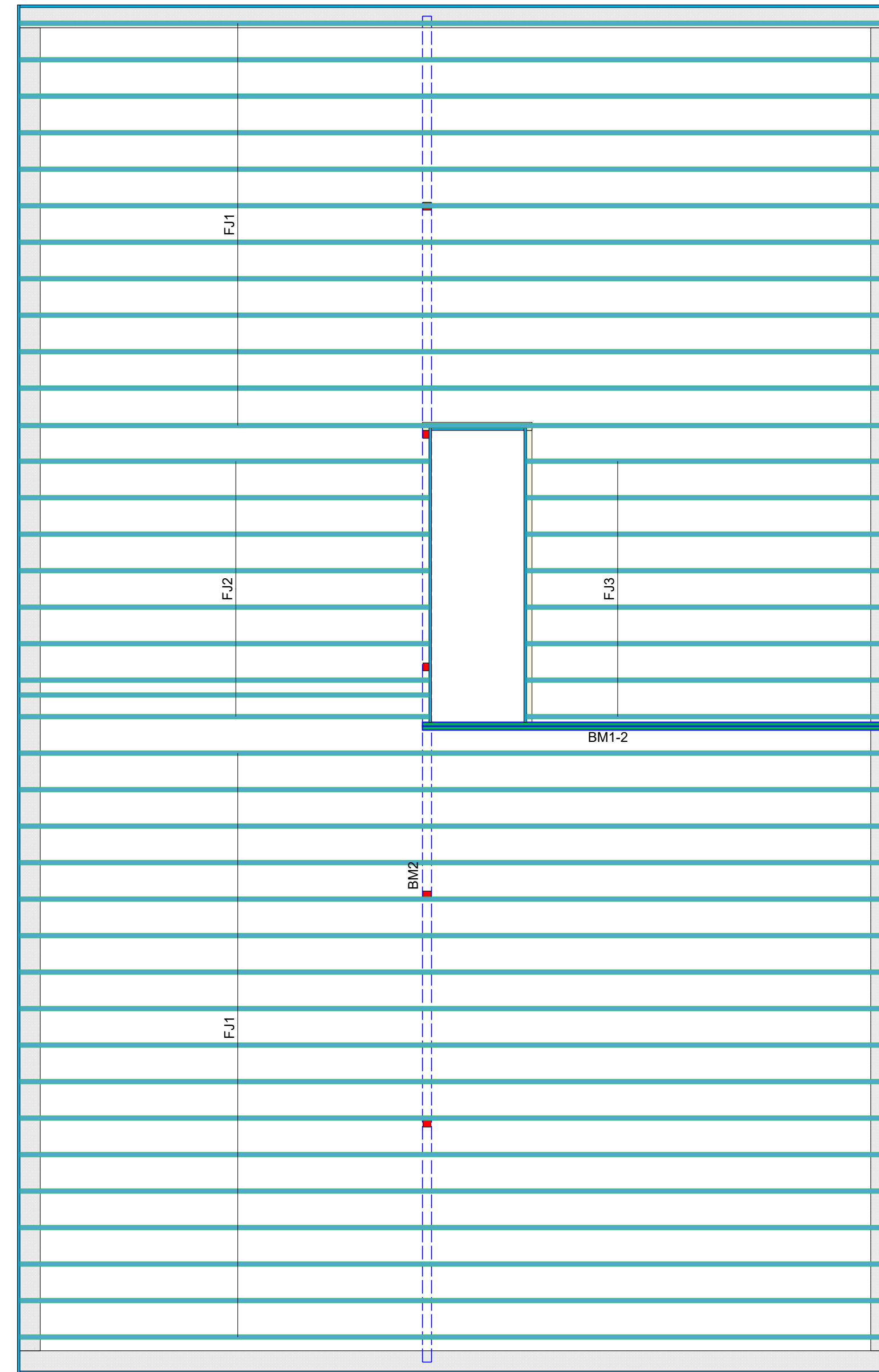
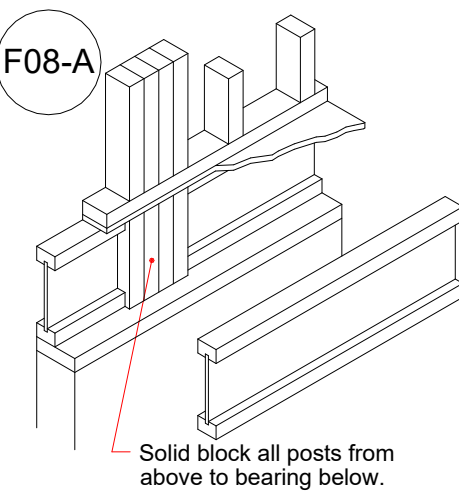
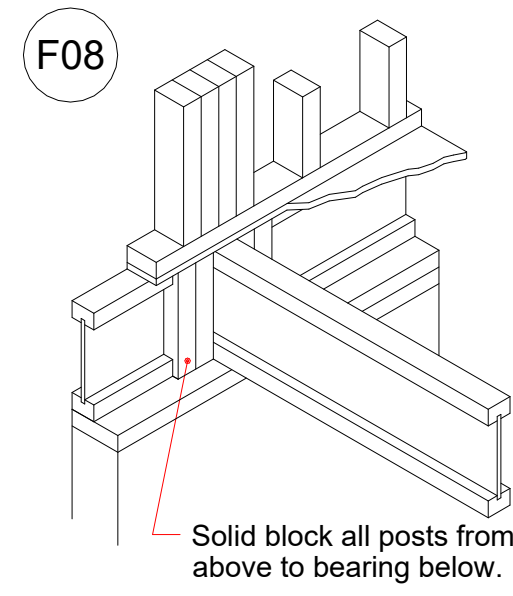
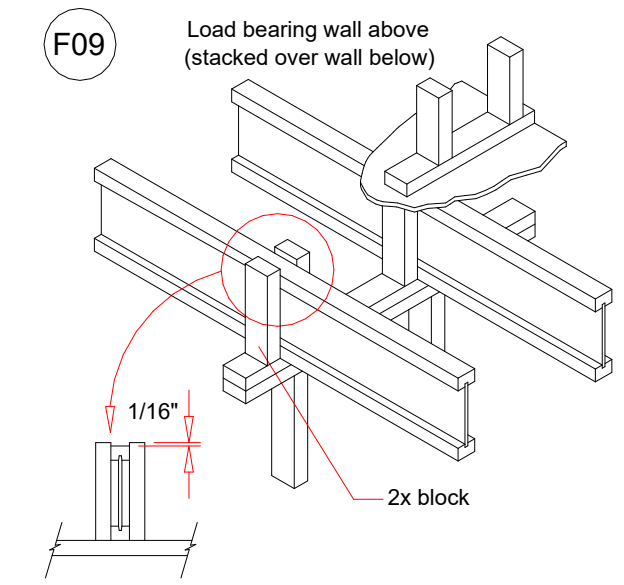
Joist Spacing 16" O.C

**RELEASE FOR
CONSTRUCTION**
AS NOTED ON PLANS REVIEW
DEVELOPMENT SERVICES
LEE'S SUMMIT, MISSOURI

11/11/2020

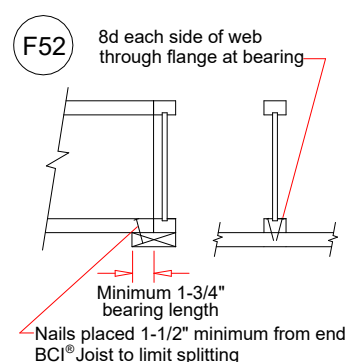
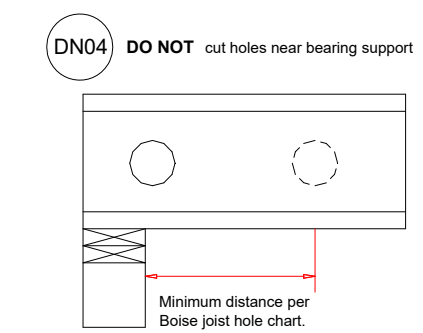
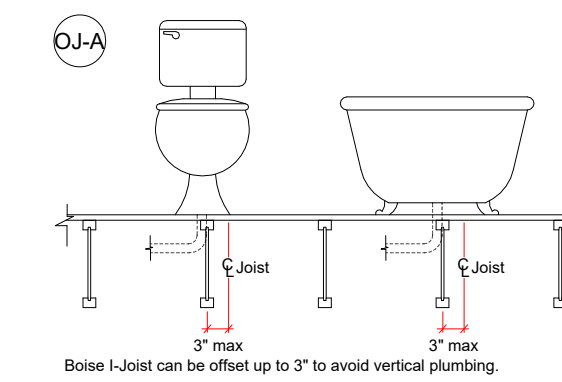
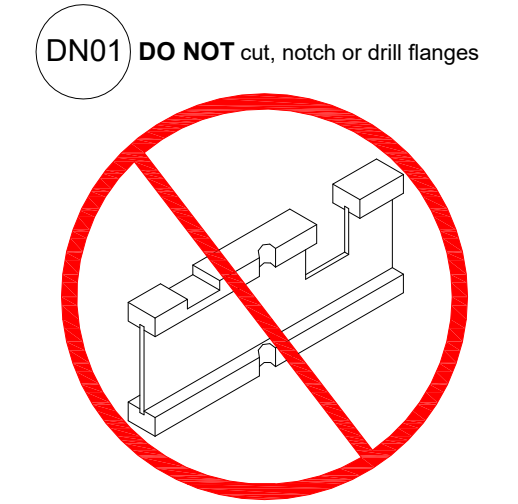


Typical Deck Attachment



Products				
PlotID	Net Qty	Product	Length	Plies
FJ1	29	11-7/8" BCI@ 5000s-1.8	32' 0"	1
FJ2	9	11-7/8" BCI@ 5000s-1.8	16' 0"	1
FJ3	8	11-7/8" BCI@ 5000s-1.8	14' 0"	1
BM1-2	2	1-3/4" x 11-7/8" VERSA-LAM® 2.0 3100 SP	18' 0"	2
Ca1	16	1-1/8" x 11-7/8" BC RIM BOARD OSB	12' 0"	1

Accessories				
PlotID	Net Qty	Product	Length	Plies
	51	3/4" 4x8 OSB		1



See Boise Specifier Guide For Filler Block Detail And Table In Regard To Double Joist Installation

DESIGN LOAD
Live Load 40 PSF
Dead Load 15 PSF
Total Load 55 PSF

Revisions: BY:

Boise Cascade



NOTE:
ALL MEASUREMENTS
TO BE VERIFIED
IN THE FIELD.

USER NOTES
This design is provided as a courtesy to the builder and does NOT guarantee a complete structural review of the project. Neither Lateral nor Seismic Analysis has been considered. All bearing locations and product usages shall be verified by the builder and engineer of record. This design shall be reviewed, verified, and approved by the builder, engineer of record, and local building department prior to ordering materials.

Walker Custom Homes
514 NW Main Street
McCRAY LUMBER
Liberty, Jim Austin, 8167928918

Scale: 1/4" = 1'-0"
DWG: BC FRAMER
File: 20000071
By: Keith Tally
Date: 8/17/2020
Sheet 1 of 1

