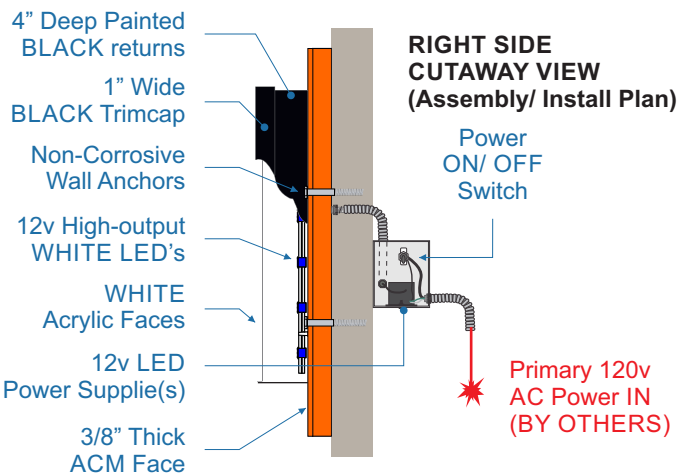


PRIMARY 120v ELECTRICAL POWER (BY OTHERS) TO BE RUN WITHIN 3 FT. OF SIGN INSTALL LOCATION BEFORE INSTALL CAN BEGIN.

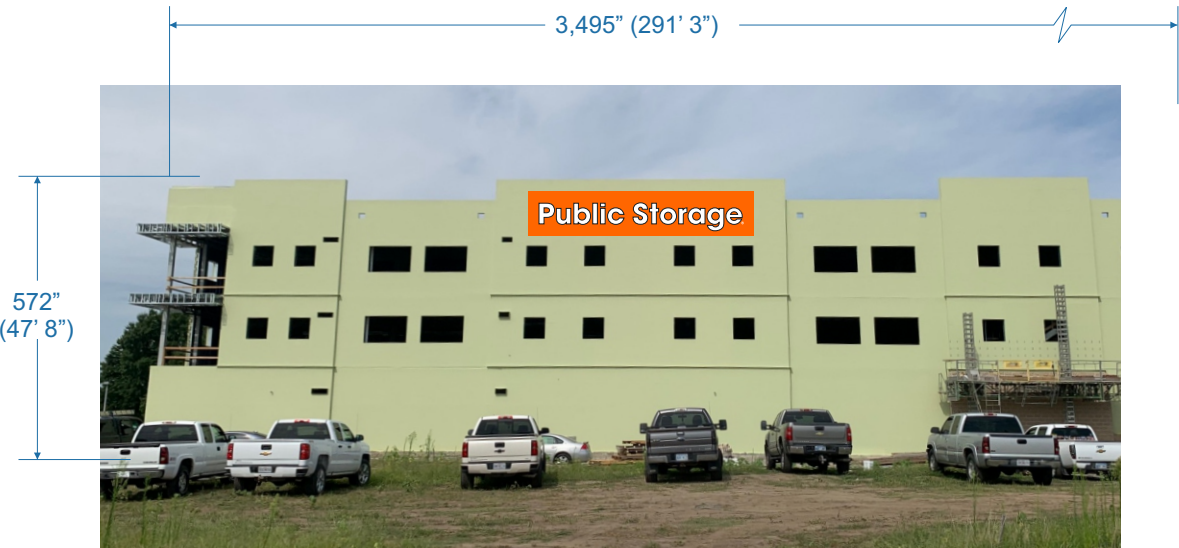


UL NOTE: Fabrication/ Assembly, and Installation of this Sign to comply to UL Standards

FRONT ILLUM. CHANNEL LTR. SET, W/ PAINTED PAN-FACE BACKER

- Qty: (1) One Total Ch. Ltr./ Pan-Face sign.
- MIG Welded Channel Ltr. Cans.
- 4" deep Pre-painted BLACK Heavy-Duty Returns, 1" BLACK Trimcap.
- 3/16" (.177") Thick WHITE Sign-grade Acrylic Faces.
- Illuminated using internally-mounted High-output WHITE LEDS.
- LED Power Supplies/ Power Box mounted remotely inside Bldg.
- Pan Face Backer constructed using Welded 2" deep Aluminum Frame, w/ 3/8" Thick ACM Face.
- Backers Face and Returns painted to Match PPG Orange
- Ch. Ltrs. mounted FLUSH against Painted Pan-Face.
- Ch. Ltr./ Pan Face assembly mounted FLUSH against Bldg. facade using Non-Corrosive Bolt Anchor system, ALL Hardware selected/ sized appropriate to Bldg. conditions.
- ALL Penetrations into Bldg. sealed using CLEAR Waterproof silicone.

NORTH ELEVATION (FRONT)



Drawing Prepared by:



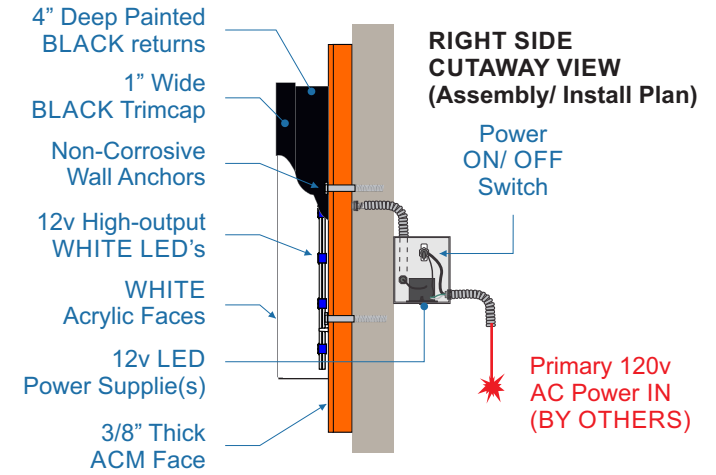
Location: 1420 NE Douglas St.,
Lee's Summit, MO 64086
Project #: _____
Loc # _____
Filename:
Public Storage - Lee's Summit_Bldg Signs_Rev04

Drawing Prepared for:



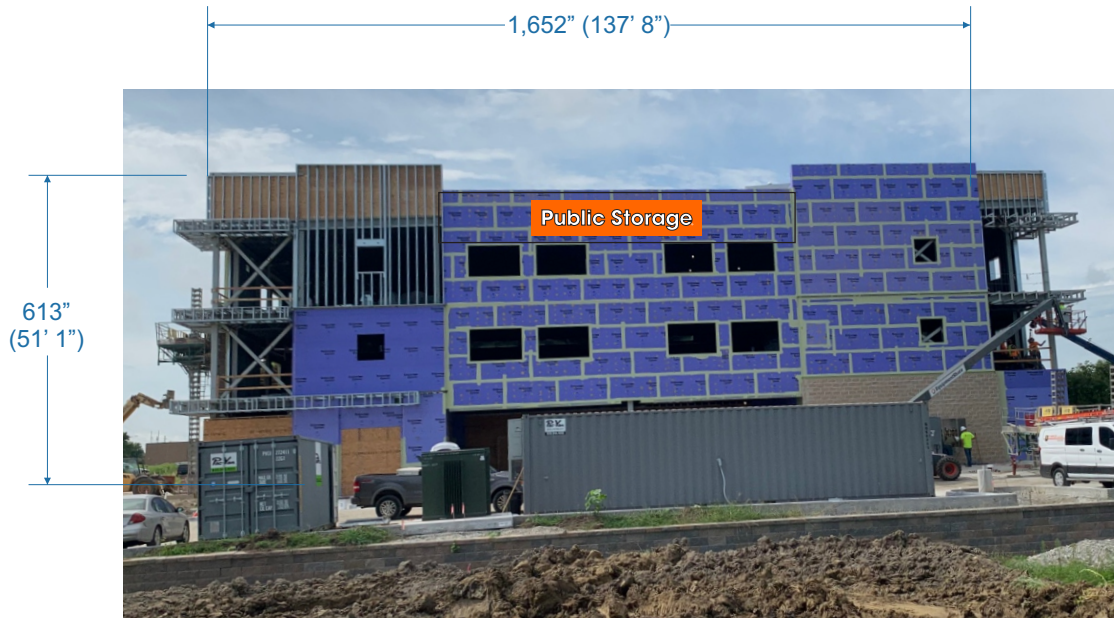
Rev #:	Req #:	Date	Req by:	Drawn by:	Revision Description:	Drawings are the exclusive property of Midwest Sign Company
Original		8/19/20	CK	MG		
02		9/08/20	CK	MG	Added Sign to WEST Elevation	
03		10/09/20	CK	MG	Drop Canopies, Add FCO's to N and W elevations.	
04		11/02/20	CK	MG	Drop East elevation signs	Approved By: _____ Date: _____
					Reduce ht. of FCOs from 7" to 5"	

PRIMARY 120v ELECTRICAL POWER (BY OTHERS) TO BE RUN WITHIN 3 FT. OF SIGN INSTALL LOCATION BEFORE INSTALL CAN BEGIN.



WEST ELEVATION

Elevation Sq. Ft: 7,032.47
Sq. Ft. allowed (10%): 703.25 (10%)
Sign Sq. Ft: 156.98 (2.23%)



UL NOTE: Fabrication/ Assembly, and Installation of this Sign to comply to UL Standards

FRONT ILLUM. CHANNEL LTR. SET, W/ PAINTED PAN-FACE BACKER

- Qty: (1) One Total Ch. Ltr./ Pan-Face sign.
- MIG Welded Channel Ltr. Cans.
- 4" deep Pre-painted BLACK Heavy-Duty Returns, 1" BLACK Trimcap.
- 3/16" (.177") Thick WHITE Sign-grade Acrylic Faces.
- Illuminated using internally-mounted High-output WHITE LEDS.
- LED Power Supplies/ Power Box mounted remotely inside Bldg.
- Pan Face Backer constructed using Welded 2" deep Aluminum Frame, w/ 3/8" Thick ACM Face.
- Backers Face and Returns painted to Match PPG Orange
- Ch. Ltrs. mounted FLUSH against Painted Pan-Face.
- Ch. Ltr./ Pan Face assembly mounted FLUSH against Bldg. facade using Non-Corrosive Bolt Anchor system, ALL Hardware selected/ sized appropriate to Bldg. conditions.
- ALL Penetrations into Bldg. sealed using CLEAR Waterproof silicone.

Drawing Prepared by:



Location: 1420 NE Douglas St.,
Lee's Summit, MO 64086
Project #: _____
Loc # _____
Filename: Public Storage - Lee's Summit_Bldg Signs_Rev04

Drawing Prepared for:

Public Storage

Rev #:	Req #:	Date	Req by:	Drawn by:	Revision Description:	Drawings are the exclusive property of Midwest Sign Company
Original		8/19/20	CK	MG		
02		9/08/20	CK	MG	Added Sign to WEST Elevation	
03		10/09/20	CK	MG	Drop Canopies, Add FCO's to N and W elevations.	
04		11/02/20	CK	MG	Drop East elevation signs	
					Reduce ht. of FCOs from 7" to 5"	
						Approved By: _____ Date: _____

FCO's Stud-mounted
FLUSH against
Bldg. facade

1,652" (137' 8")

613"
(51' 1")

Public Storage

Loading

- Qty: (1) One Total Flat Cut-out Letter set.
- 1/2" thick WHITE Sign-grade Acrylic, Routed to Size/ Shape.
- FCO's Drilled/ Tapped on backs to receive 1/4-20 x 2" Threaded Studs.
- WHITE REFLECTIVE Vinyl applied to Faces, trimmed to edges.
- FCO's mounted Flush against Bldg. facade
in position shown, using a Paper Pattern as a Layout/ Drilling guide.
- Studs secured in place using CLEAR Waterproof silicone.

Public Storage

[illegible]