



- SCOPE OF WORK:
- EXISTING MERCANTILE OCCUPANCY
 - INSTALLATION RACKING, SHELVING, REGISTER CABINETS, & FITTING ROOMS ONLY
 - NO PLUMBING UNDER THIS SCOPE OF WORK
 - NO MECHANICAL UNDER THIS SCOPE OF WORK
 - NO ELECTRICAL UNDER THIS SCOPE OF WORK

SCOPE OF WORK

DAVID LEE, AIA
852 W. VICKERY, SUITE 100
FORT WORTH, TX 76104

CONTACT: ARTHUR CALCATERRA
PHONE: (817) 546-6311
EMAIL: arthuro@garch.com

ARCHITECT

RELEASE FOR
CONSTRUCTION
AS NOTED ON PLANS REVIEW
DEVELOPMENT SERVICES
LEE'S SUMMIT, MISSOURI
10/07/2020

LEE'S SUMMIT DEVELOPMENT SERVICES
220 SE GREEN
LEE'S SUMMIT, MO 64063

PHONE: (816) 969-1200

BUILDING DEPARTMENT

APPLICABLE CODES:	
BUILDING	2018 INTERNATIONAL BUILDING CODE
MECHANICAL	2018 INTERNATIONAL MECHANICAL CODE
PLUMBING	2018 INTERNATIONAL PLUMBING CODE
ELECTRICAL	2017 NATIONAL ELECTRICAL CODE
FIRE PROTECTION	2018 INTERNATIONAL FIRE CODE
ENERGY	2009 INTERNATIONAL ENERGY CONSERVATION CODE
ACCESSIBILITY	2018 INTERNATIONAL BUILDING CODE
FIRE	NFPA 101 LIFE SAFETY CODE
BUILDING INFO:	
CONSTRUCTION TYPE:	TYPE II-B
OCCUPANCY GROUP:	MERCANTILE
GROSS LEASE AREA:	21,976 SQ. FT.
TOTAL OCCUPANT LOAD:	(0-499 2 EXITS REQUIRED)
EXIT REQUIREMENTS	(2) EXITS REQUIRED, (3) PROVIDED
AUTOMATIC SPRINKLER SYSTEM:	YES
SALES: 17,965 / 60 = 300 OCCUPANTS	STORAGE 4,011 / 300 = 14 (TOTAL OCCUPANT LOAD 314 OCCUPANTS)
MAX LENGTH OF TRAVEL: 250'-0"	PROVIDED 215'-2"
314 OCCUPANTS x .15 = 47.1" REQ.	PROVIDED 200"

CODE ANALYSIS



KEY MAP



VICINITY MAP

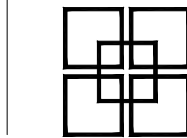


STORE PLANNING
AND
DESIGN

5130 Hacienda Drive
Dublin, CA 94568
TEL: (925) 966-4400 FAX: (925) 965-4197

DAVID LEE, AIA
PROFESSIONAL ARCHITECT
MISSOURI LICENSE NO. 7172

825 W. Vickery Blvd., Suite 100
Fort Worth, Texas 76104-1142
(817) 735-0395
FAX (817) 735-9524



Digitally signed
by David J. Lee
Date: 2020.09.25
12:25:24-05'00'

FIXTURE DRAWINGS
STORE #2313
480 NW CHIPMAN RD.
LEE'S SUMMIT, MO 64086

GROSS AREA 21,976 S.F.
SALES AREA 17,965 S.F.

REVISIONS:

PROJECT NO. 20258
DATE: 09/25/2020
DRAWN BY: AC/AL

SHEET TITLE:

COVER
SHEET

SP0

SHEETS - ARCHITECTURAL

		09.25.2020							
SP0	COVER SHEET	●							
EGR	EGRESS PLAN	●							
SMC	FIXTURE PLAN	●							
SP3.1	WOMEN'S FITTING ROOMS	●							
SP3.2	MEN'S FITTING ROOMS	●							
SP4	REGISTER COUNTERS	●							
SP5	FIXTURE ELEVATIONS & DETAILS	●							

DRAWING INDEX

TOTAL BUILDING: 21,976 SQ.FT.
TOTAL SALES FLOOR: 17,965 SQ.FT.

PROJECT DATA

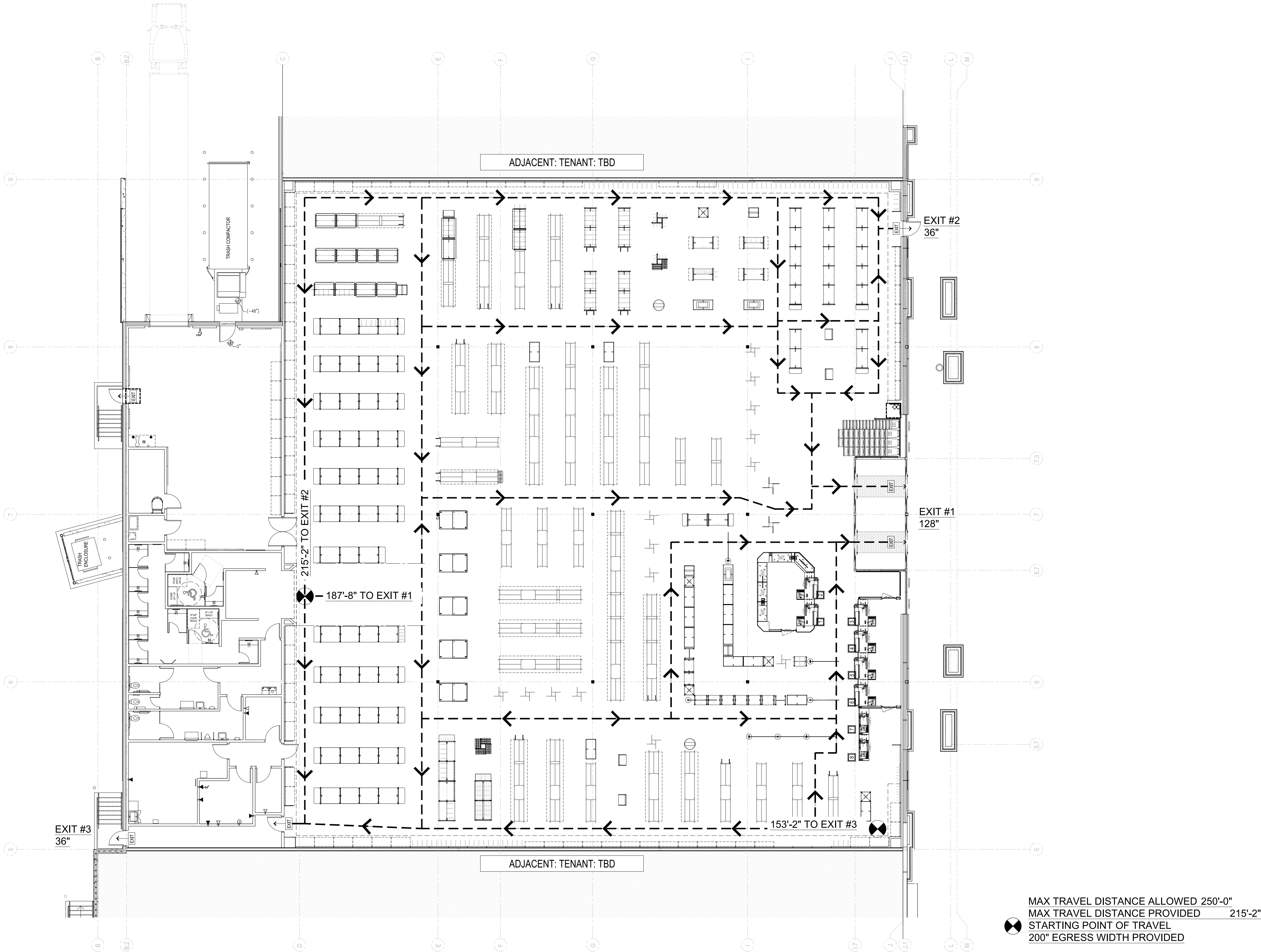
GROSS AREA	21,976 S.F
SALES AREA	17,965 S.F

REVISIONS:	

PROJECT NO.	20258
DATE:	09/25/2020
DRAWN BY:	AC/AL

SHEET TITLE:

EGRESS PLAN

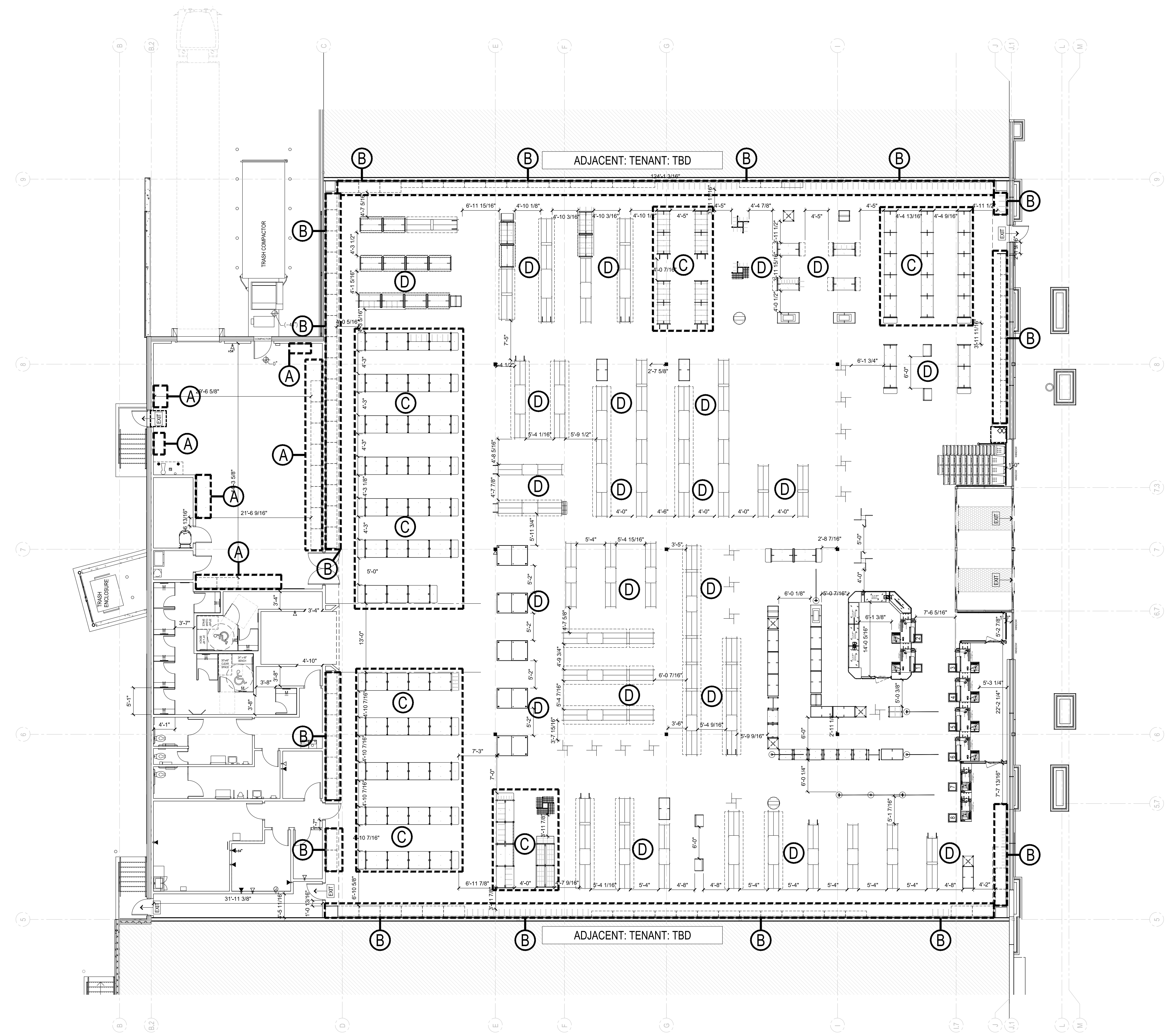


GROSS AREA	21,976 S.F.
SALES AREA	17,965 S.F.

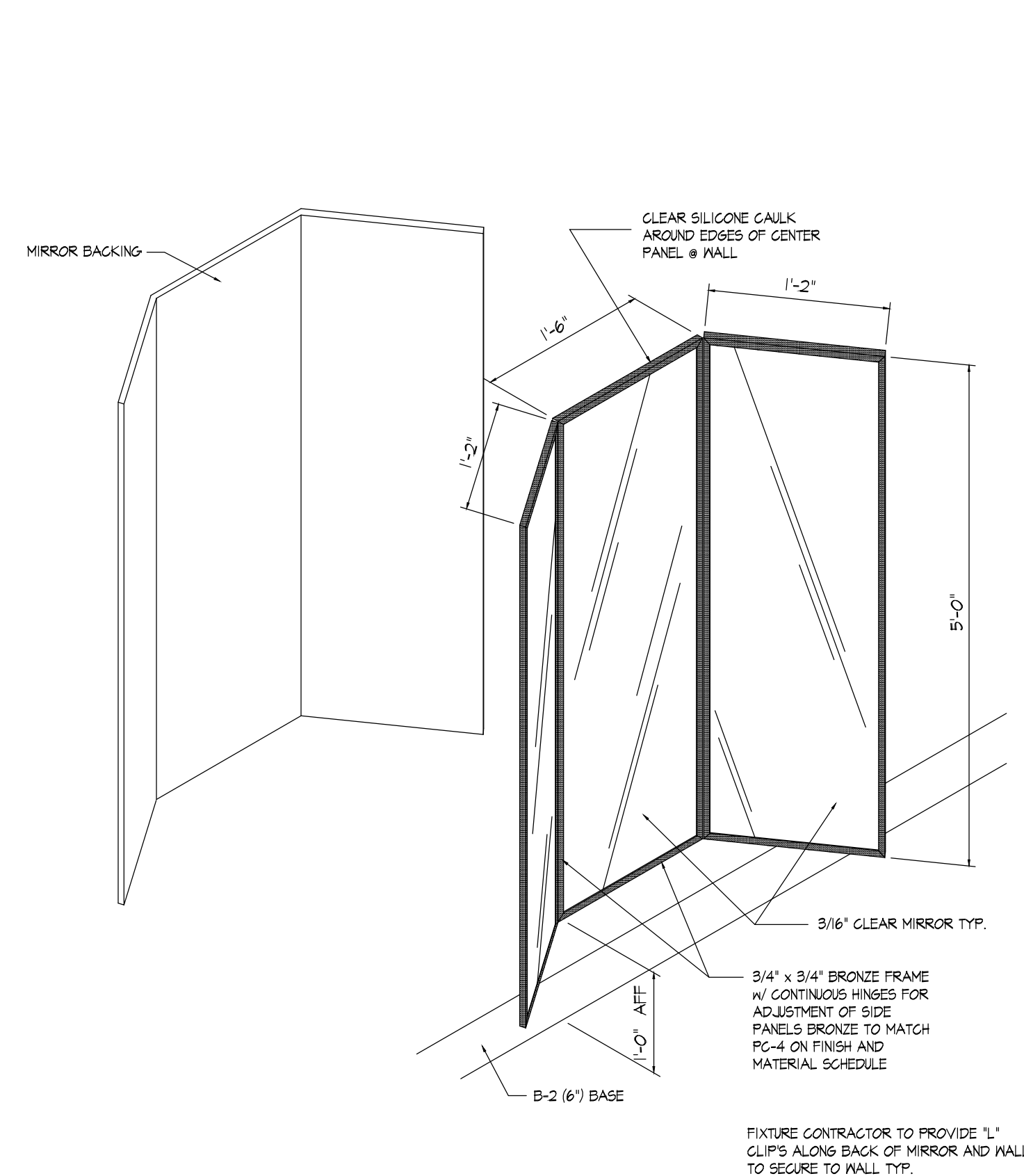
REVISIONS:	
PROJECT NO.	20258
DATE:	09/25/2020
DRAWN BY:	AC/AL

SHEET TITLE:

FIXTURE PLAN

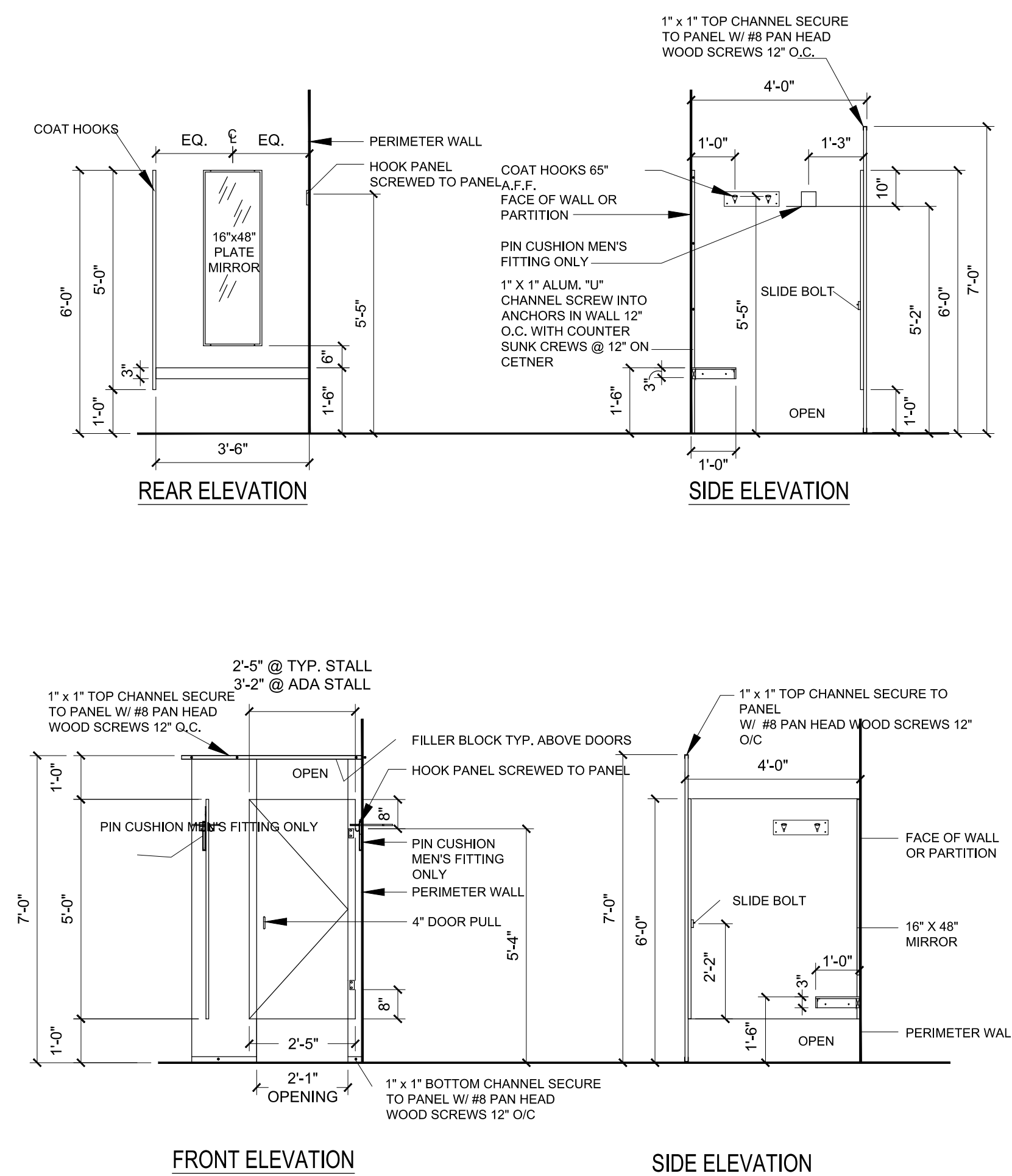


SCOPE OF WORK	LEGEND	NOTES
<p>THE PROJECT CONSISTS OF FIXTURES, CASH WRAPS, & FITTING ROOM INSTALLATION FOR A NEW RETAIL STORE WITHIN AN EXISTING COMMERCIAL RETAIL BUILDING.</p> <p>THE WORK INCLUDES BUT IS NOT LIMITED TO:</p> <ul style="list-style-type: none">ALL FIXTURES IN LOCATION(S) LABELED "A" IN THE LEGEND TO BE INSTALLED BY FIXTURE CONTRACTOR PER ENGINEERING SPECIFICATIONSALL FIXTURES IN LOCATION LABELED "B" IN THE LEGEND TO BE INSTALLED BY FIXTURE CONTRACTOR PER ENGINEERING SPECIFICATIONSALL FIXTURES IN LOCATION LABELED "C" IN THE LEGEND TO BE INSTALLED BY FIXTURE CONTRACTOR PER ENGINEERING SPECIFICATIONSALL FIXTURES IN LOCATION(S) LABELED "D" IN THE LEGEND TO BE INSTALLED BY FIXTURE CONTRACTOR PER ENGINEERING SPECIFICATIONSALL FIXTURES IN LOCATION(S) LABELED "E" IN THE LEGEND TO BE INSTALLED BY FIXTURE CONTRACTOR PER ENGINEERING SPECIFICATIONS. <p>BUILDING, FIRE SPRINKLER SYSTEM, AND EXTERIOR SIGNAGE IS ON SEPARATE PERMIT AND SHALL BE SUBMITTED TO, REVIEWED AND APPROVED BY THE APPROPRIATE CITY PERMIT OFFICE.</p>	<p>A STOCK ROOM WALL FIXTURES 96" TALL</p> <p>B ALL PERIMETER WALL FIXTURES 96" TALL</p> <p>C ALL FLOOR GONDOLAS 66" TALL</p> <p>D ALL OTHER FLOOR RACKS 60" TALL & UNDER</p> <p>E ALL FLOOR GONDOLAS 78" TALL</p>	<p>NO HIGH PILED STORAGE</p> <ul style="list-style-type: none">COMMODITY CLASSIFICATION "CLASS 4"80% APPAREL, TOWELS, BLANKETS, & PILLOWS20% HOME ACCENTS - PICTURES, MIRRORS, GLASSWARE, COOKWARE <p>MAXIMUM STORAGE NOT TO EXCEED 8'</p>



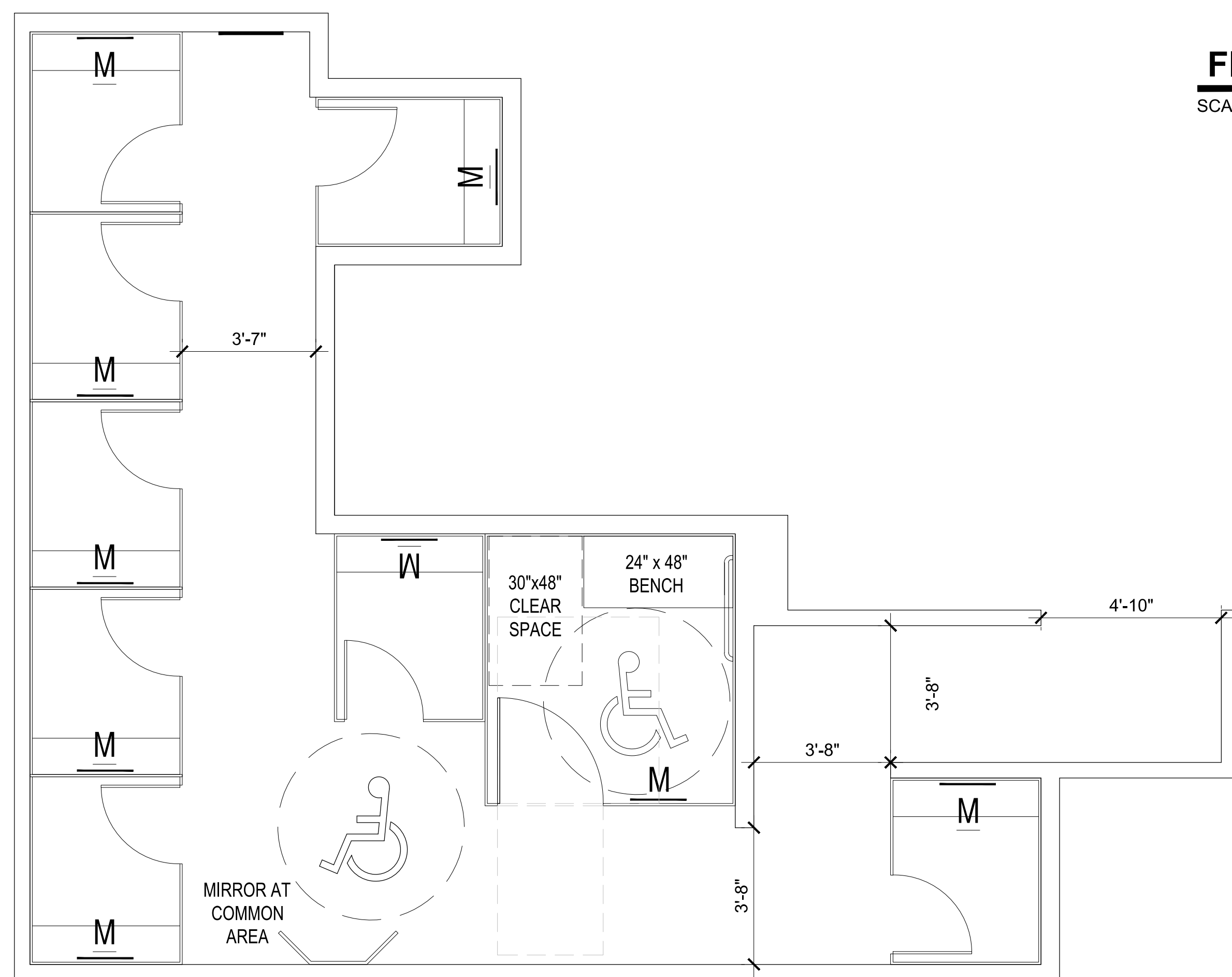
MIRROR AT COMMON AREA

SCALE: NOT TO SCALE



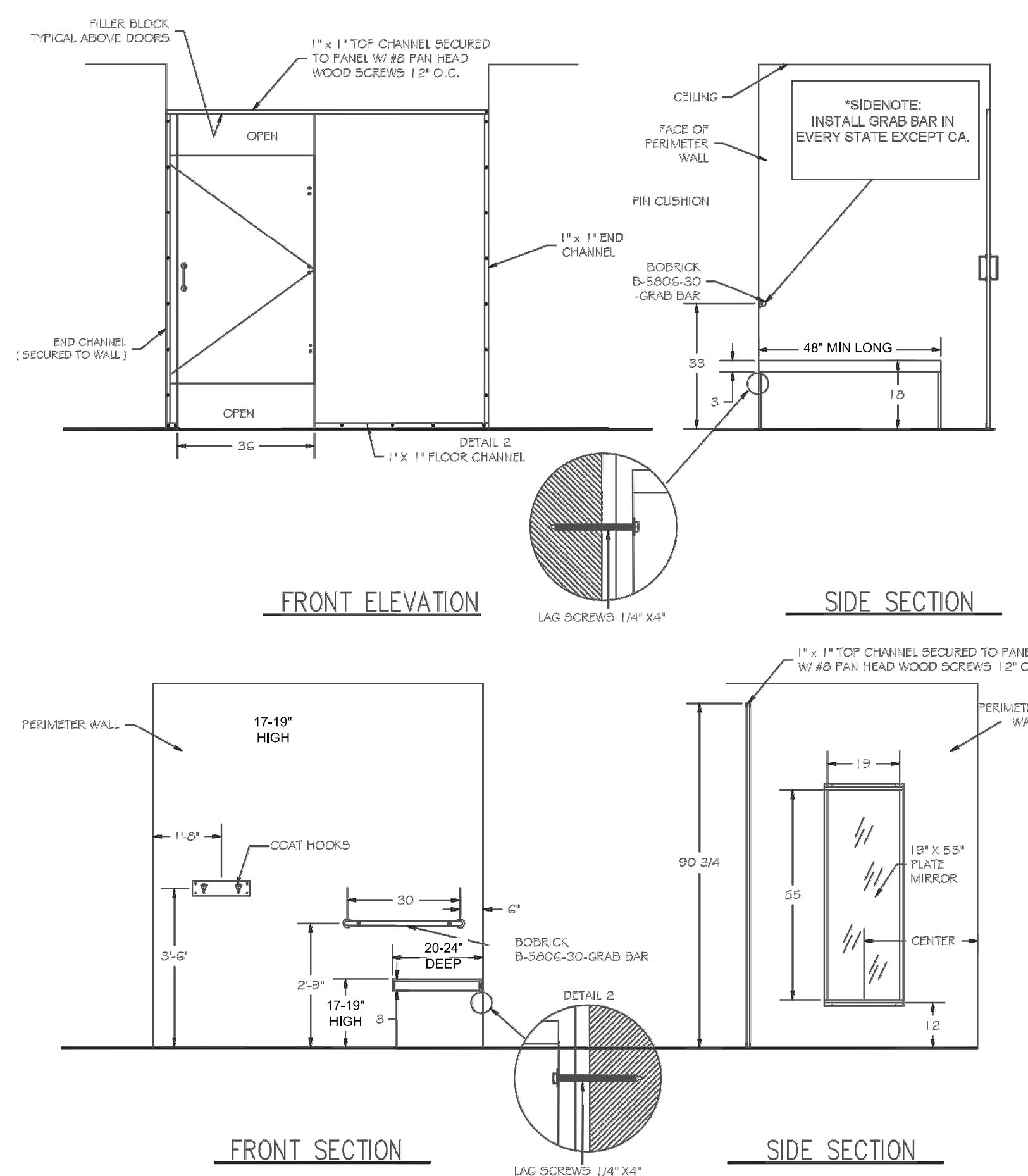
FITTING ROOMS

SCALE: 3/8" = 1'-0'



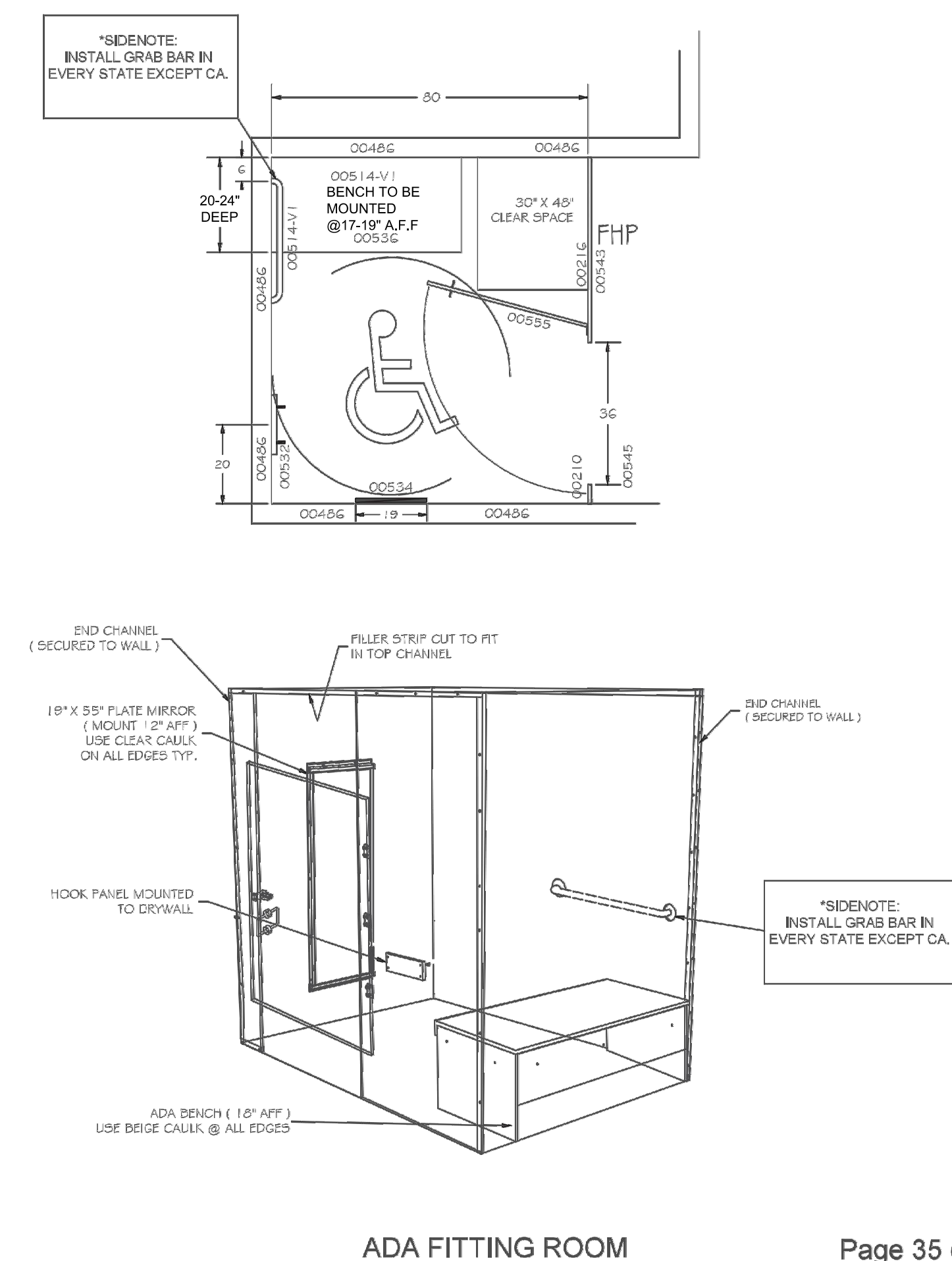
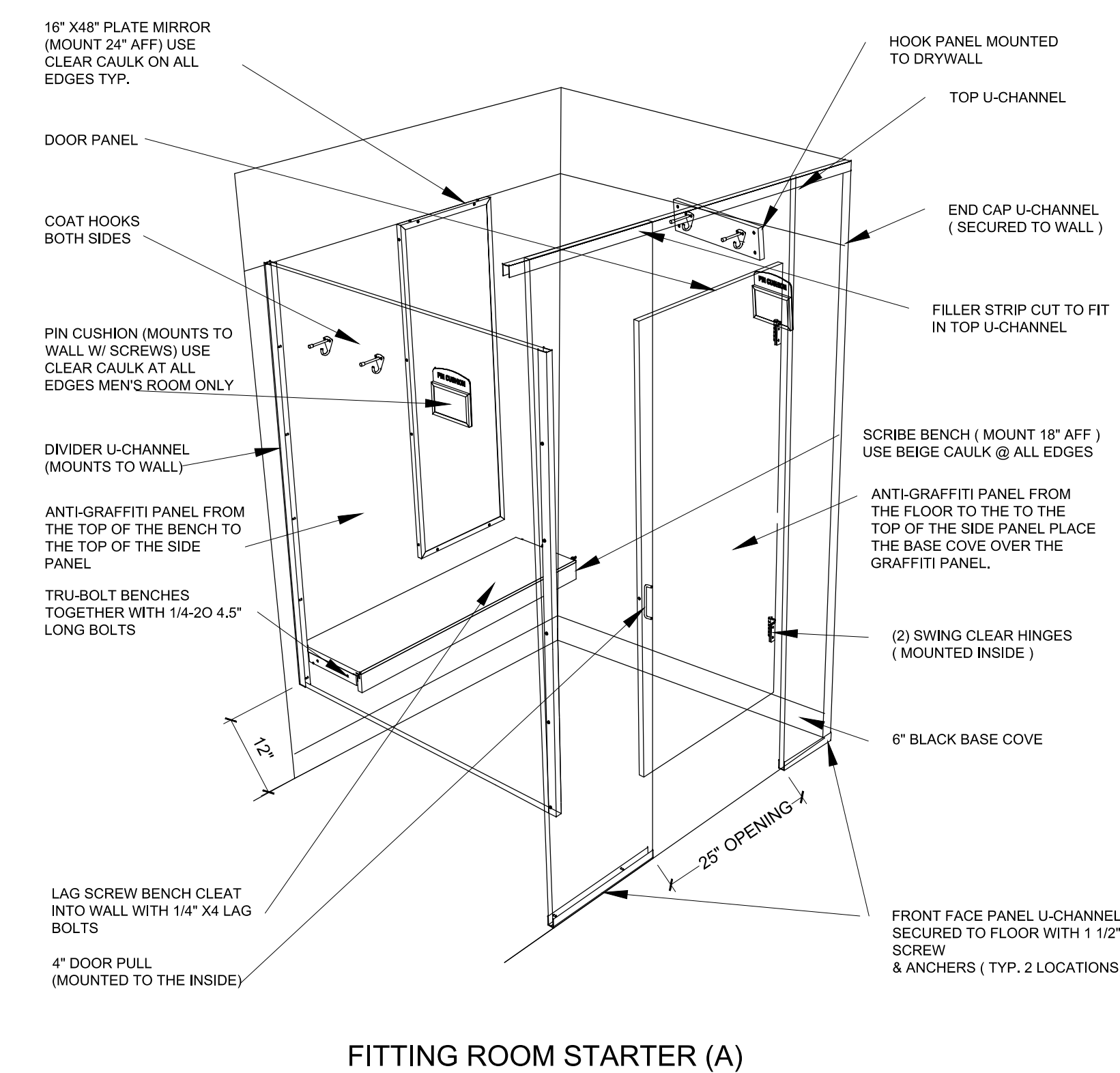
WOMEN'S FITTING ROOM PLAN

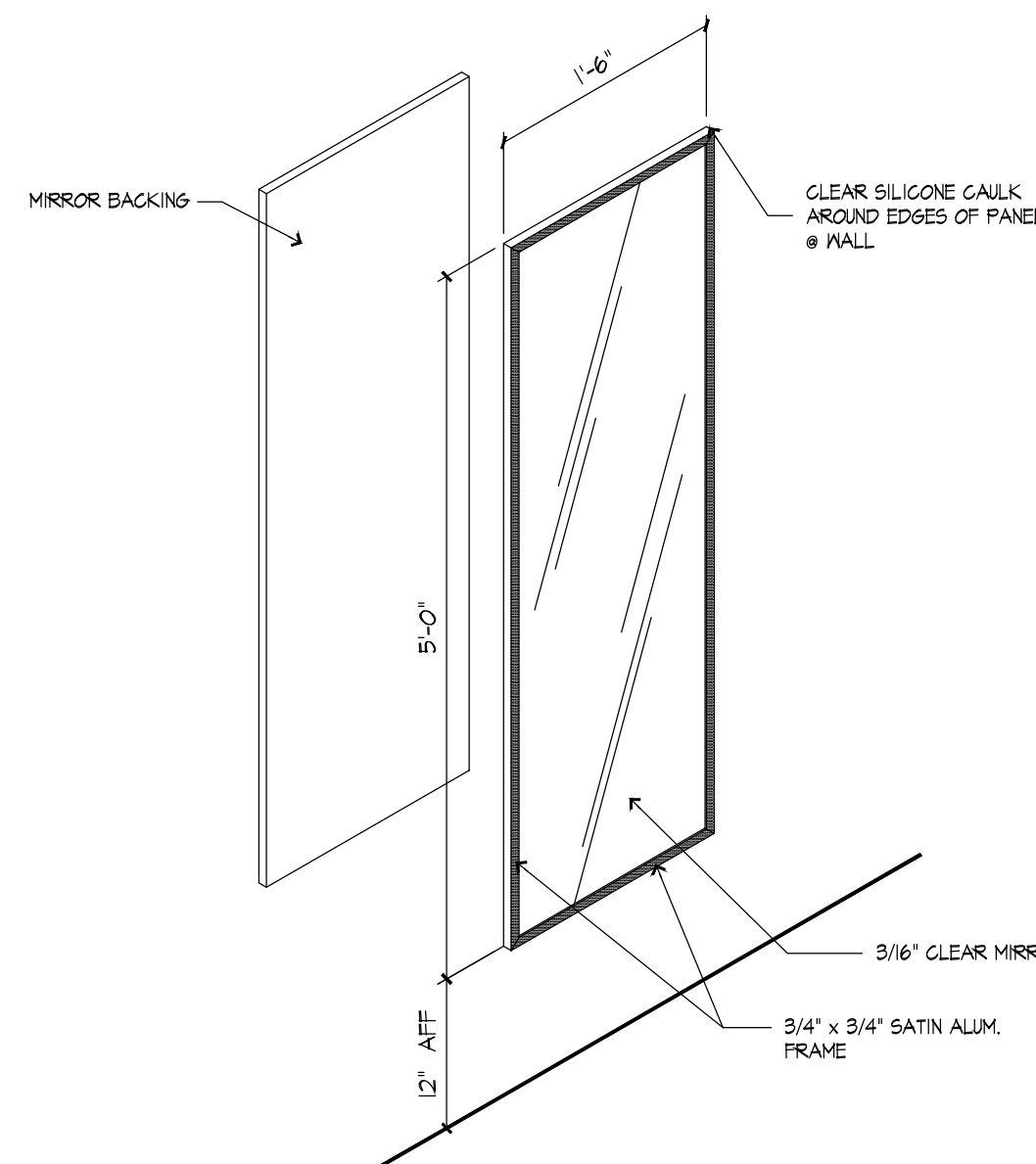
SCALE: 3/8" = 1'-0"



ADA FITTING ROOM

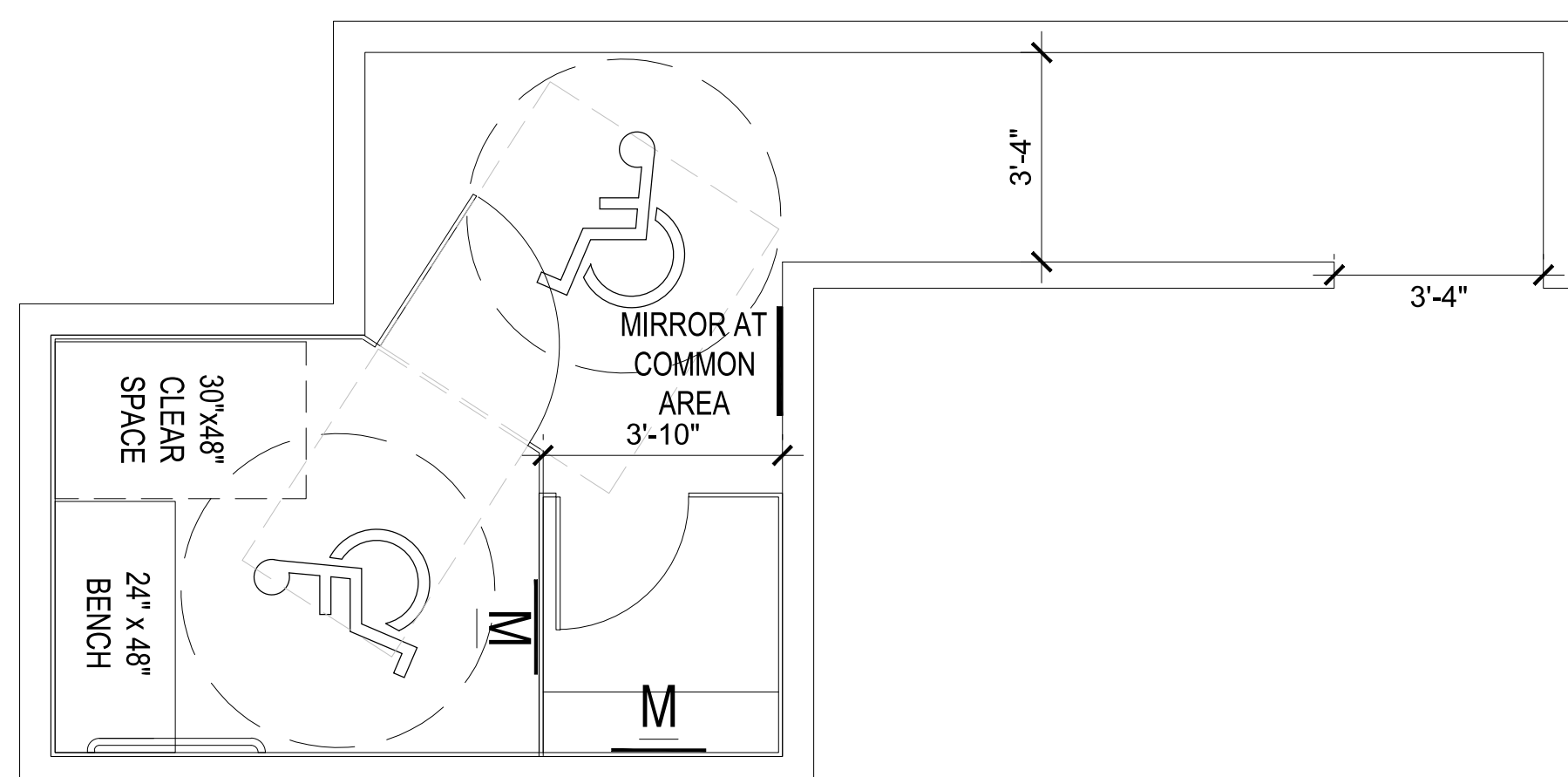
SCALE: 3/8" = 1'-0'





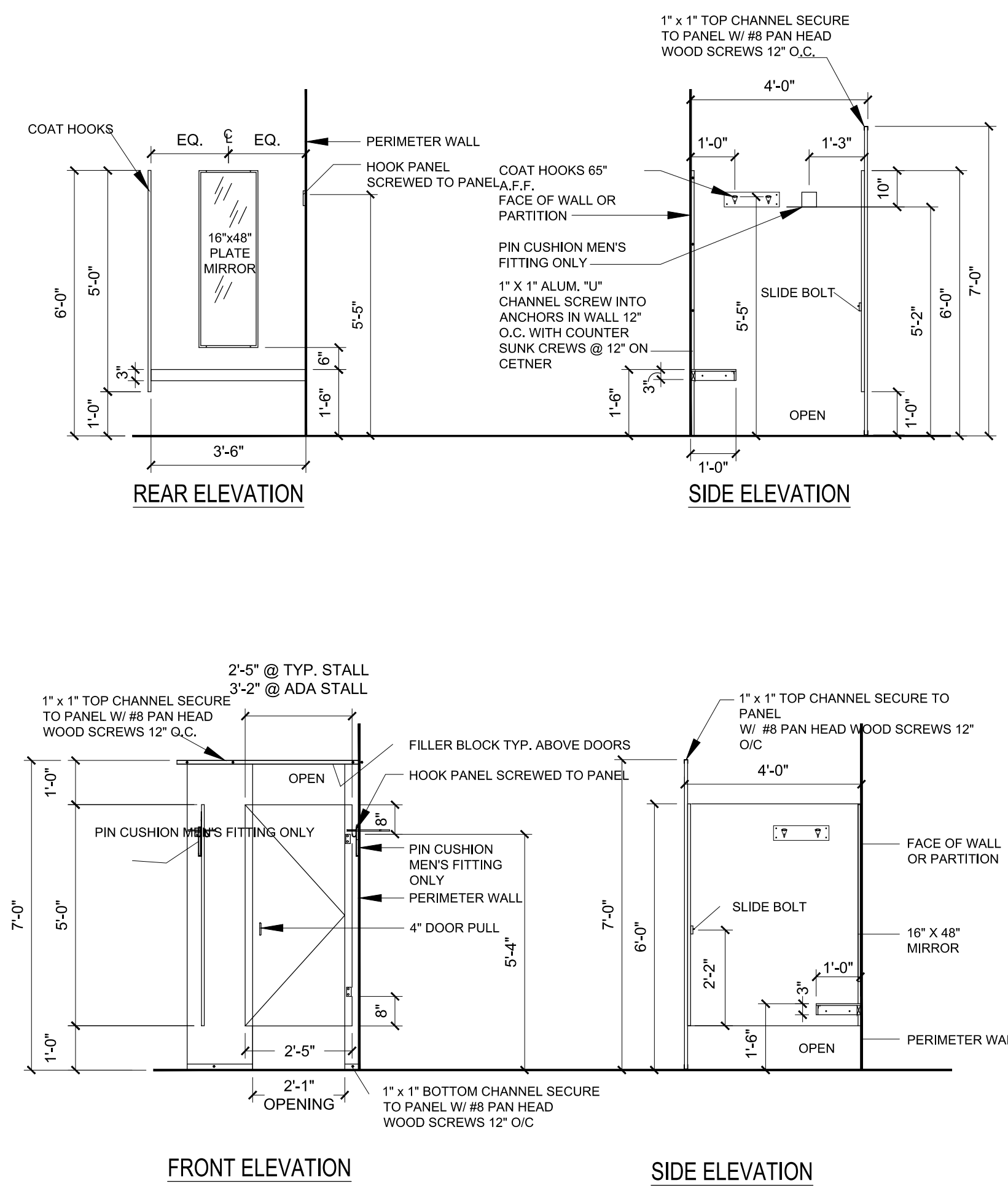
MIRROR AT COMMON AREA

SCALE: NOT TO SCALE



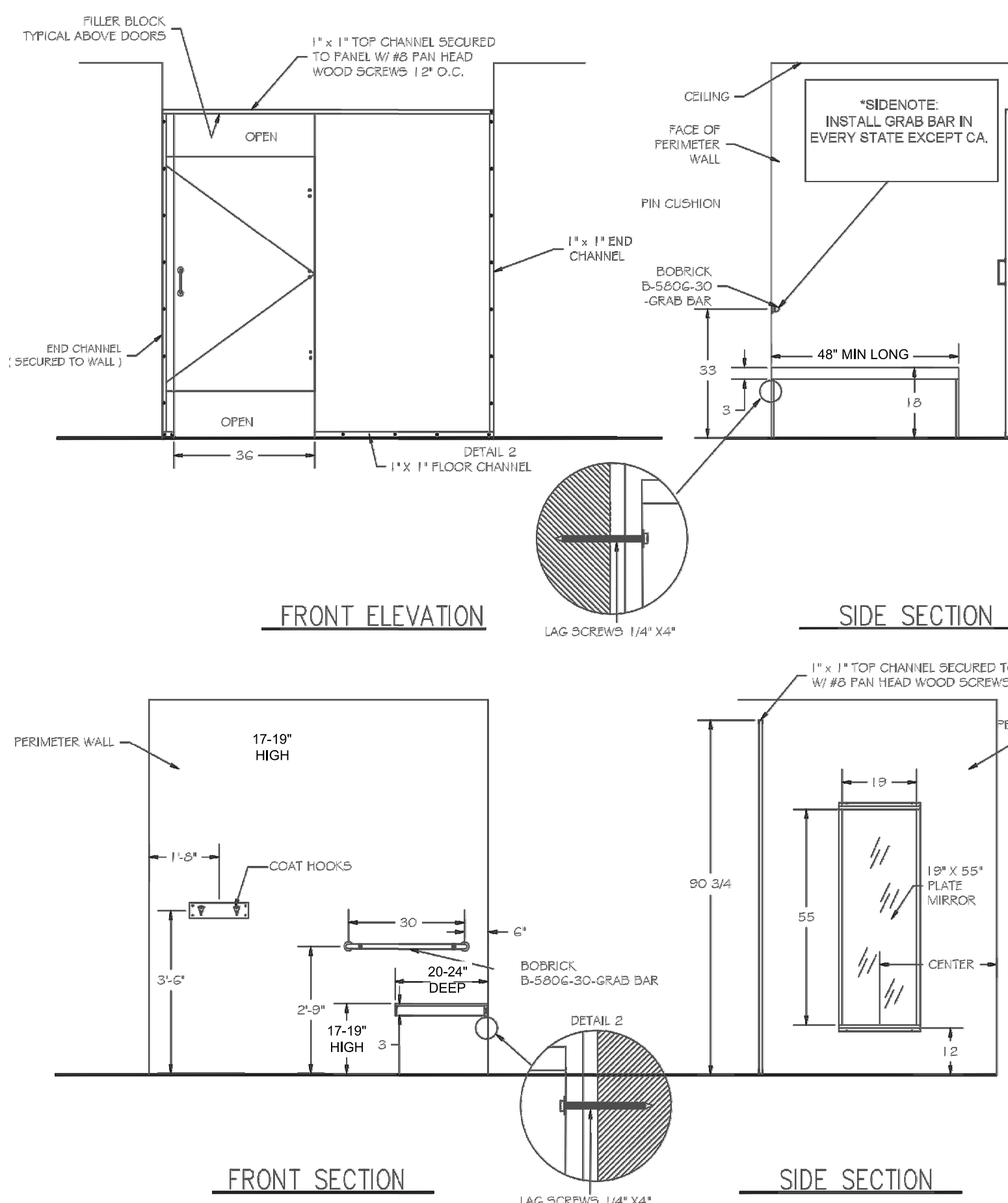
MEN'S FITTING ROOM PLAN

SCALE: 3/8" = 1'-0"



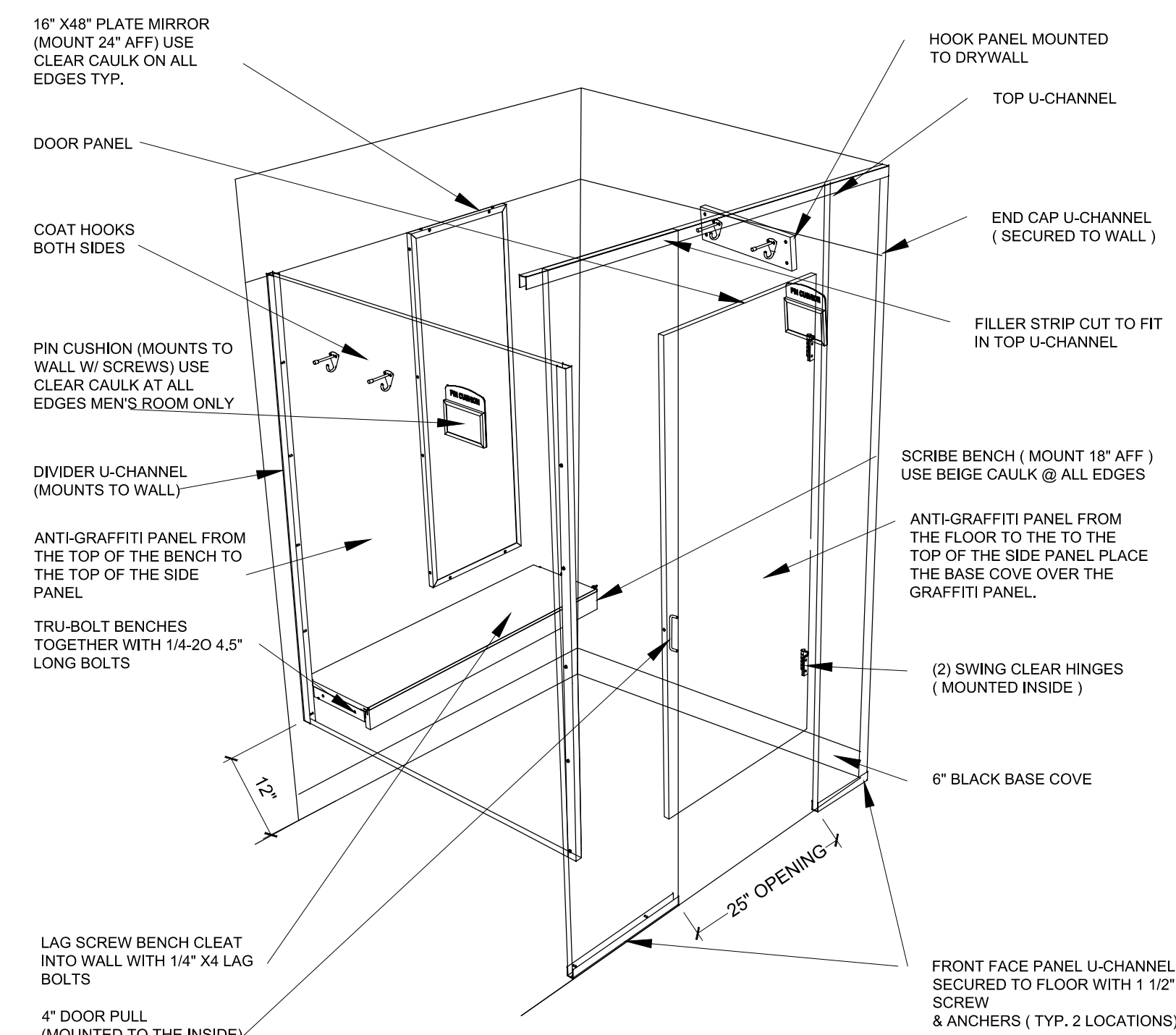
FITTING ROOMS

SCALE: 3/8" = 1'-0'



ADA FITTING ROOM

SCALE: 3/8" = 1'-0'

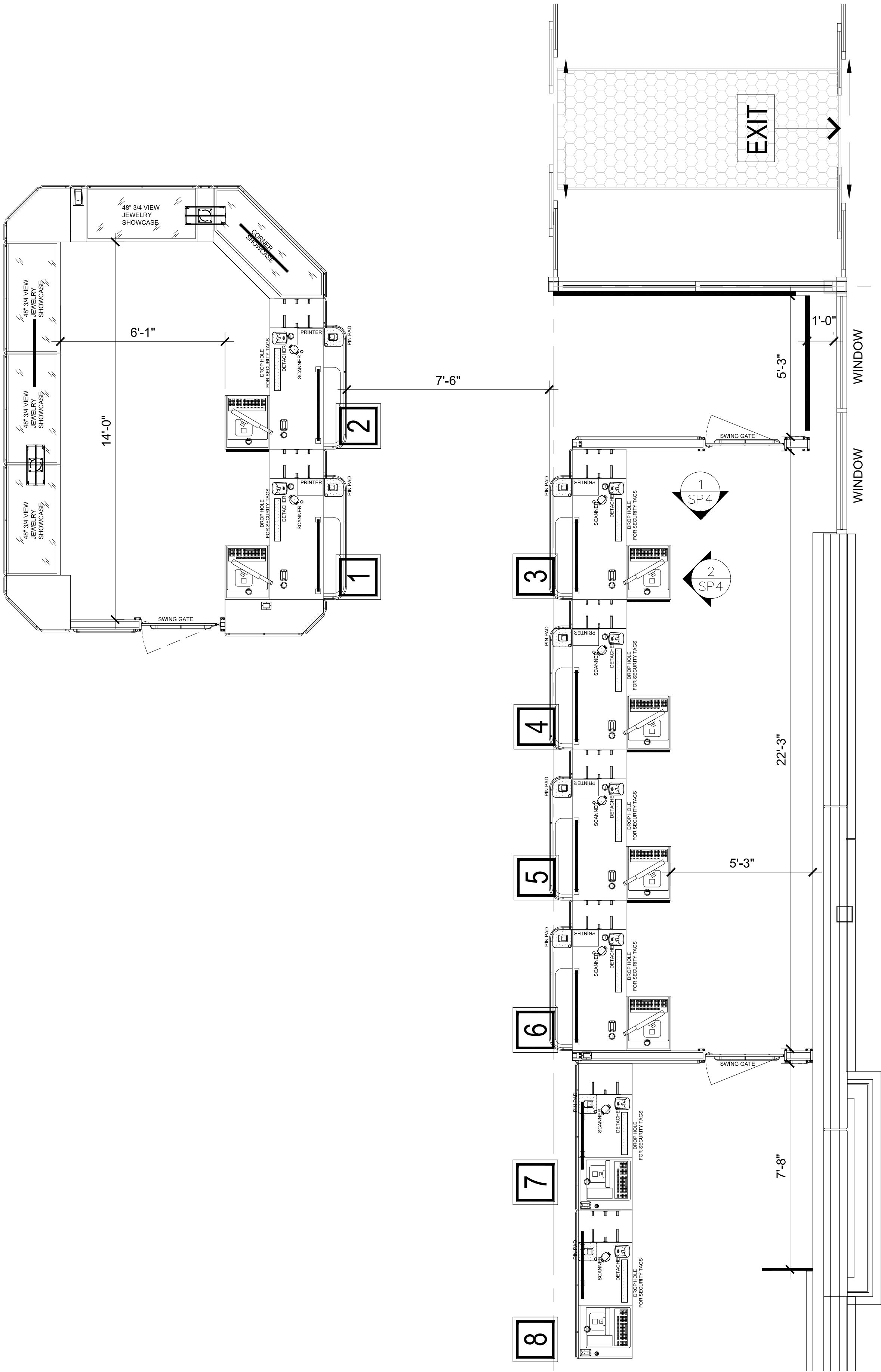


ADA FITTING ROOM

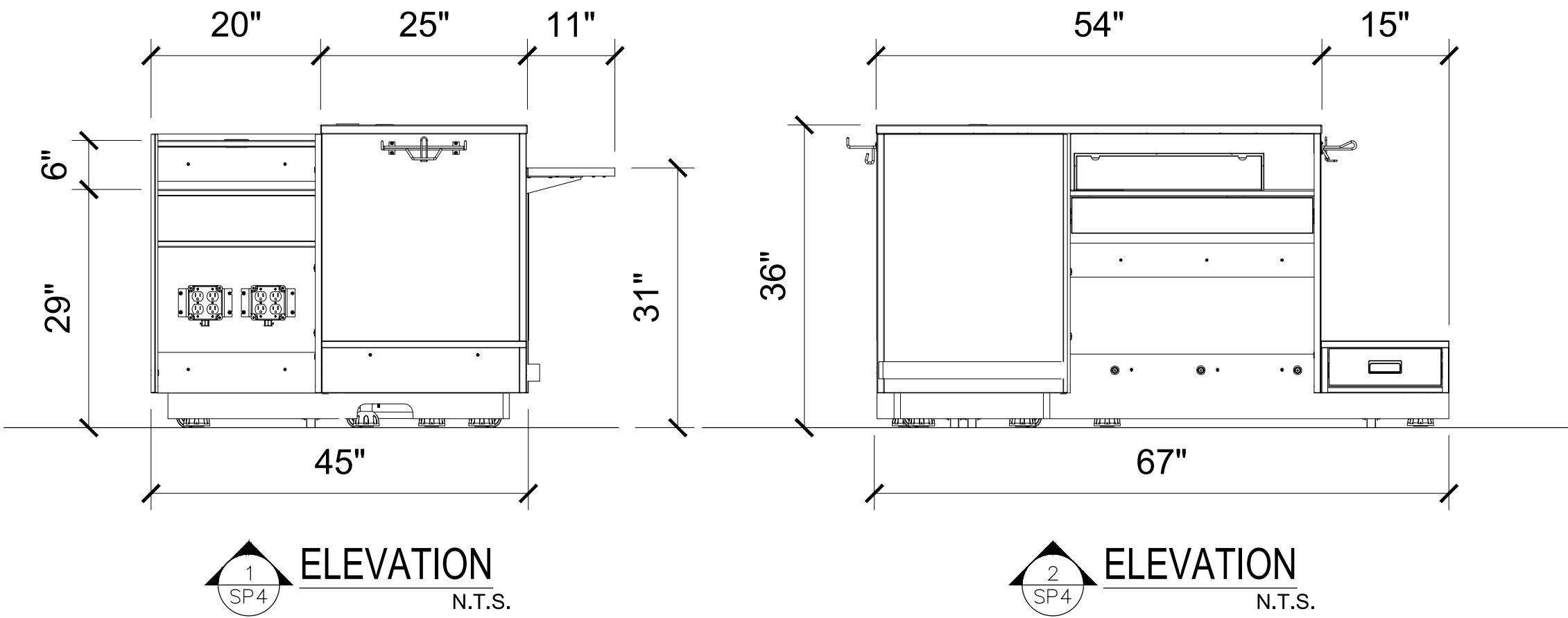
Page 35 of 44

REGISTER PLAN

SCALE: 3/8" = 1'-0"



REGISTER ELEVATIONS



REGISTER
COUNTERS

SP4

FIXTURE DRAWINGS
STORE #2313
480 NW CHIPMAN RD.
LEE'S SUMMIT, MO 64086

GROSS AREA	21,976 S.F.
SALES AREA	17,965 S.F.

REVISIONS:

PROJECT NO.	20258
DATE:	09/25/2020
DRAWN BY:	AC/AL

SHEET TITLE:

REGISTER
COUNTERS

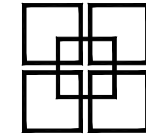
SP4



Digitally signed by
David J. Lee
Date: 2020.09.25
12:27:13-05'00'

DAVID LEE, AIA
PROFESSIONAL ARCHITECT
MISSOURI LICENSE NO. 7172

825 W. Vickery Blvd., Suite 100
Fort Worth, Texas 76104-1142
(617) 735-0095
FAX (617) 735-9524



STORE PLANNING
AND
DESIGN
5130 Hacienda Drive
Dublin, CA 94568
TEL: (925) 966-4400 FAX: (925) 965-4197

RELEASE FOR
CONSTRUCTION
AS NOTED ON PLANS REVIEW
DEVELOPMENT SERVICES
LEE'S SUMMIT, MISSOURI
10/15/2020
ROSS
DRESS FOR LESS

GROSS AREA	21,976 S.F.
SALES AREA	17,965 S.F.

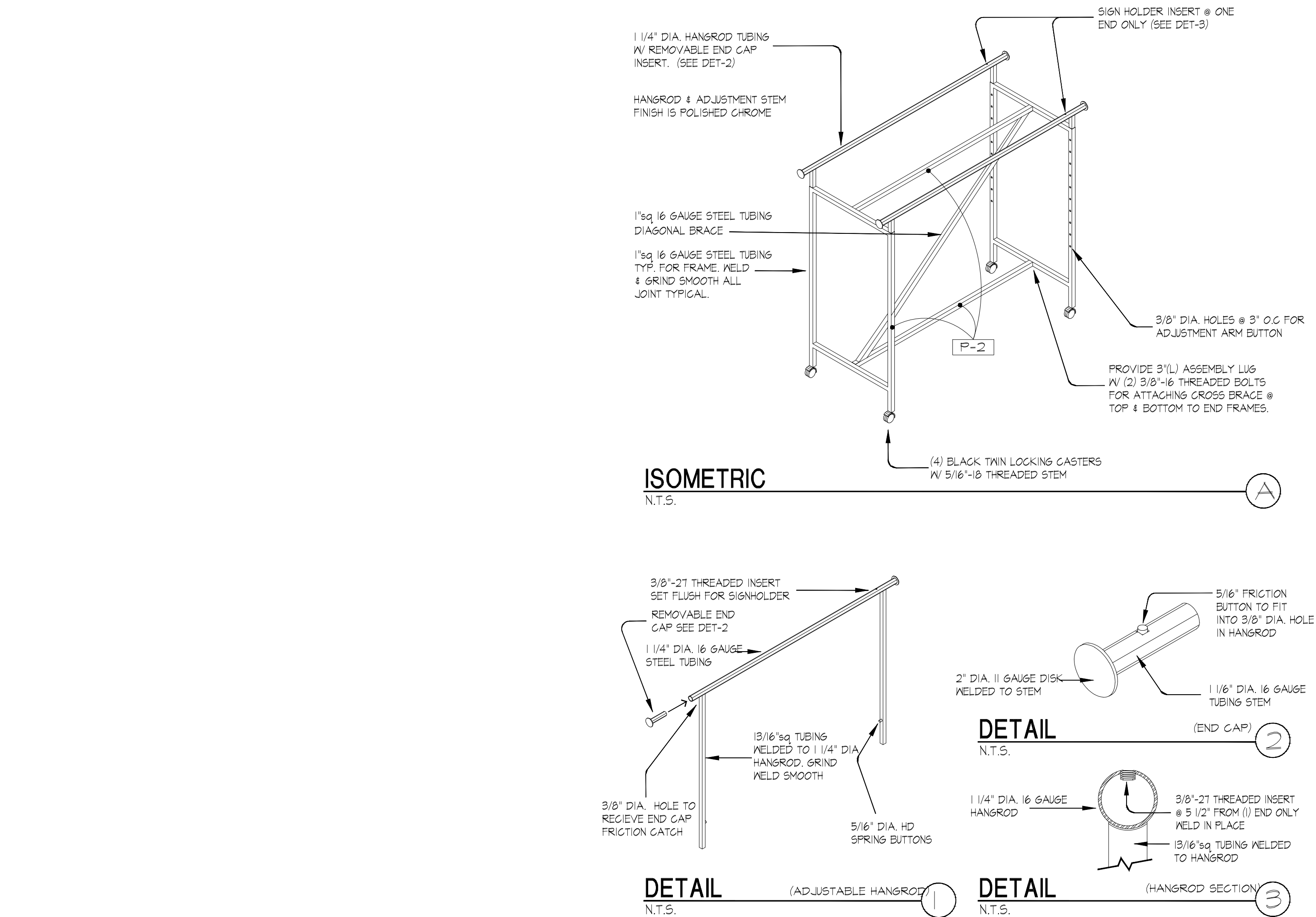
REVISIONS:	

PROJECT NO.	20258
DATE:	09/25/2020
DRAWN BY:	AC/AL

SHEET TITLE:

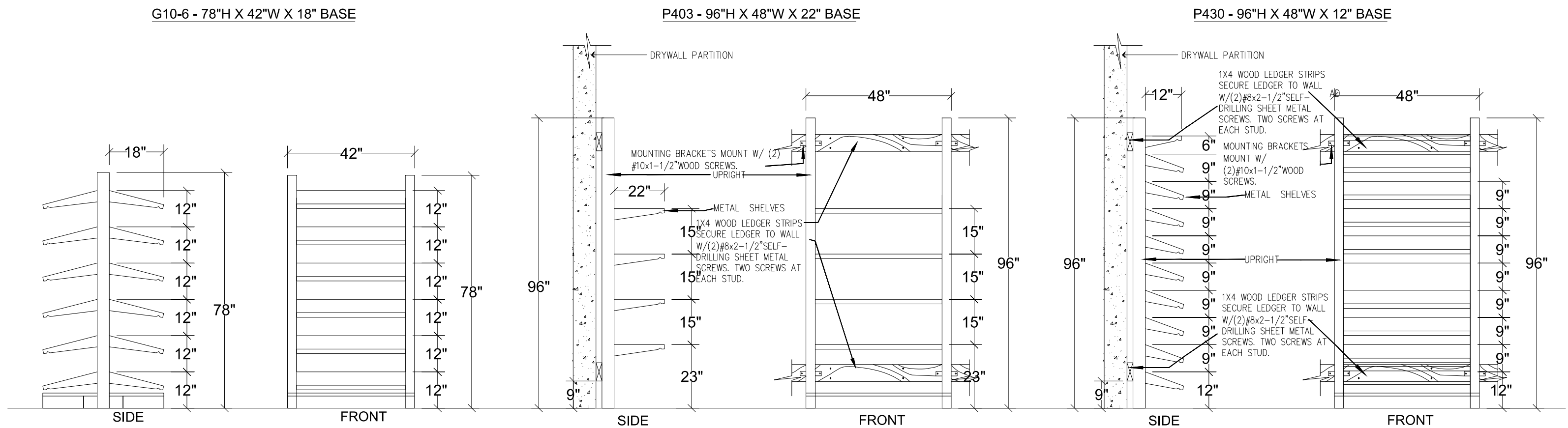
FIXTURE ELEVATIONS
& DETAILS

SP5



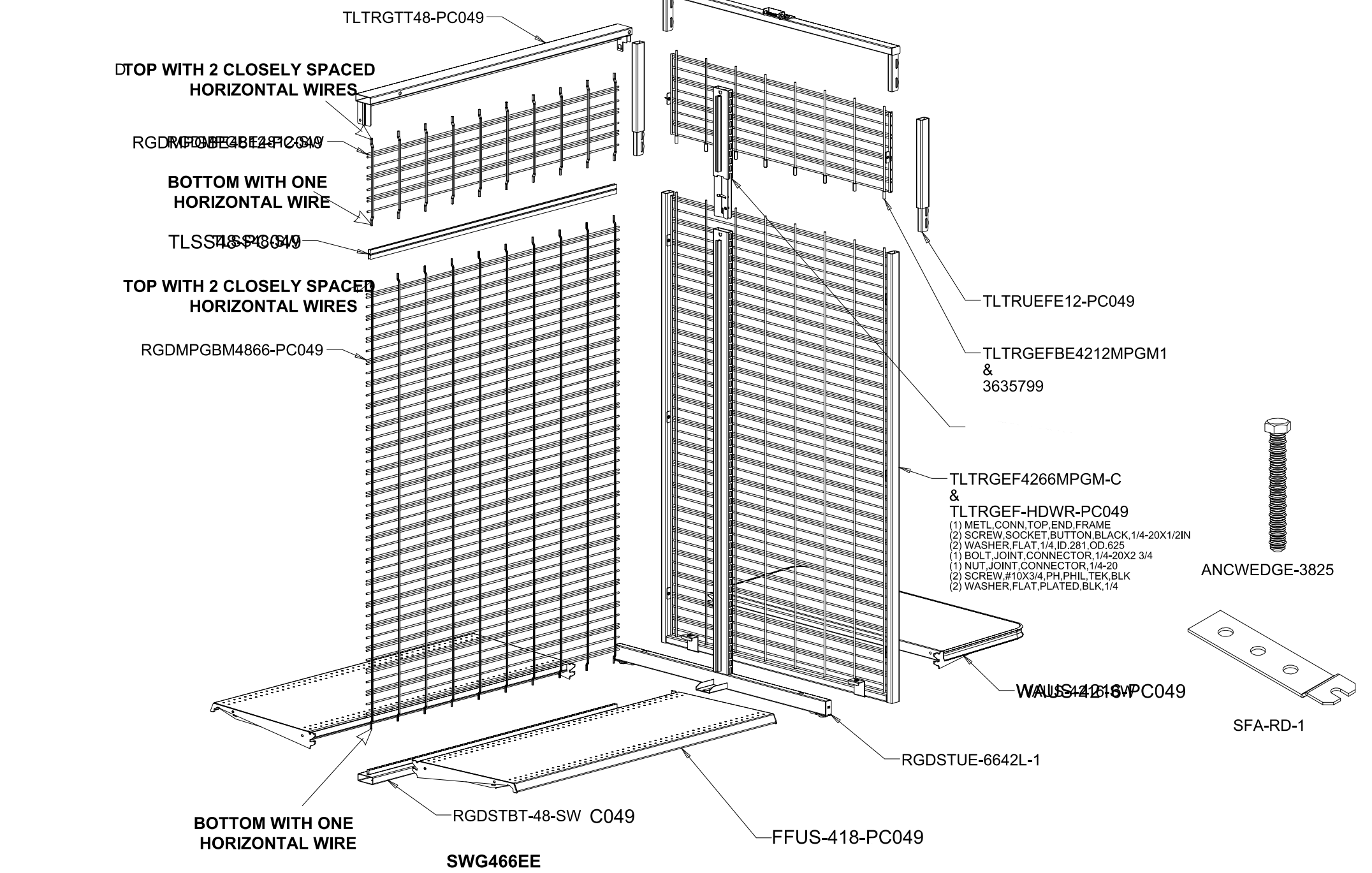
GONDOLA GENERAL INSTALLATION (D) - FOR REFERENCE ONLY

SCALE: NOT TO SCALE



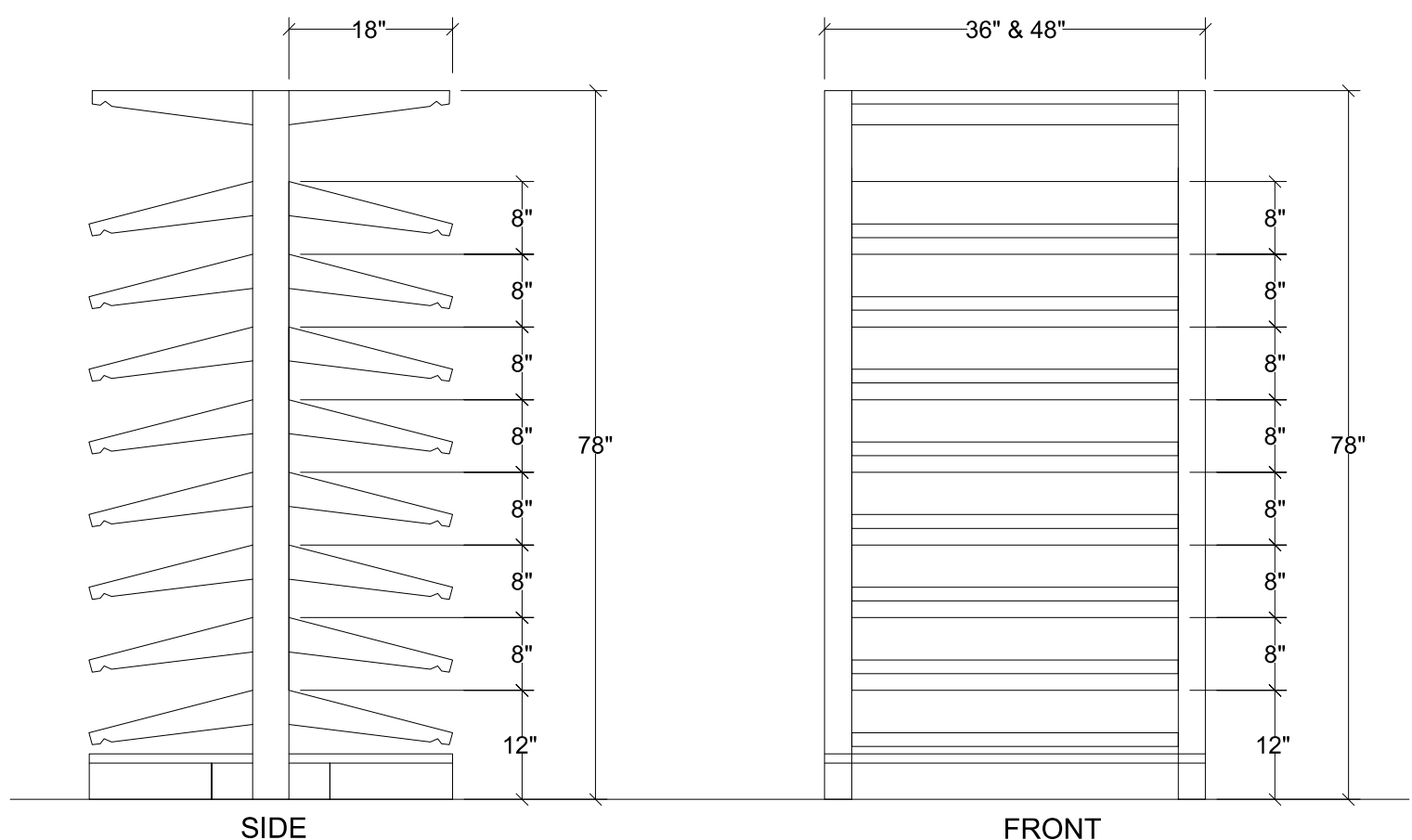
GONDOLA ELEVATIONS (B) - REFER TO SMD

SCALE: NOT TO SCALE



GONDOLA GENERAL INSTALLATION (C) - FOR REFERENCE ONLY

SCALE: NOT TO SCALE



STOCK ROOM FIXTURES (A) - REFER TO SMD

SCALE: NOT TO SCALE

G466EE		
Part Number	Description	Qty.
FFUS-418-PC049	Flush Front Upper Shelf	2
RGDMPGBE4812-PC049	Rolling Gondola Display MPG Back	1
RGDMPGBM4866-PC049	Rolling Gondola Display, Multipurpose Grid Back	1
RGDSTBT-48-PC049	Rolling Gondola Display, Single Track Bottom TU	1
RGDSTUE-6642L-1	RGDSTUE-6642L-PC049	1
TLCE1E12-PC049	TL Center Ext Upright Single Trl End F/Back	1
TLSS48-PC049	Splicer Spanner Single Track	1
TLTRGEF4266MPGM-2	TLTRGEF4266MPGM-PC049-PC049	1
TLTRGEF-HDWR-PC049	Pack, Hardware, TLTRGEF, PC285	1
TLTRGEFBE4212MPGM1	TLTRGEFBE4212MPGM-PC049	1
3635799	Pack, Hardware, TLTRGEFBE, NH12	1
TLTRGTT48-PC049	Tubeline, T-Rack, Rolling, Display, Single Track, Top	1
TLTRUEFE12-PC049	TL Tru End Frame Ext.	2
WAUS-4216-PC049	Wrap Around Upper Shelf	1
SFA-RD-1	Seismic Floor Anchor-Regular Duty	2
ANCWEDGE-3825	Anchor Wedge Bolt 3/8"x2.5"	4