

The Reserve at Stoney Creek - Lee's Summit Maintenance Design

The Reserve at Stoney Creek - Lee's Summit Pryor Road Southern Phase

City/developer Plans: [here](#)

Relocation of vaults to avoid a street widening project in Lee's Summit. The vaults will be shifted 7 to 10 feet, depending on the location and existing utilities.

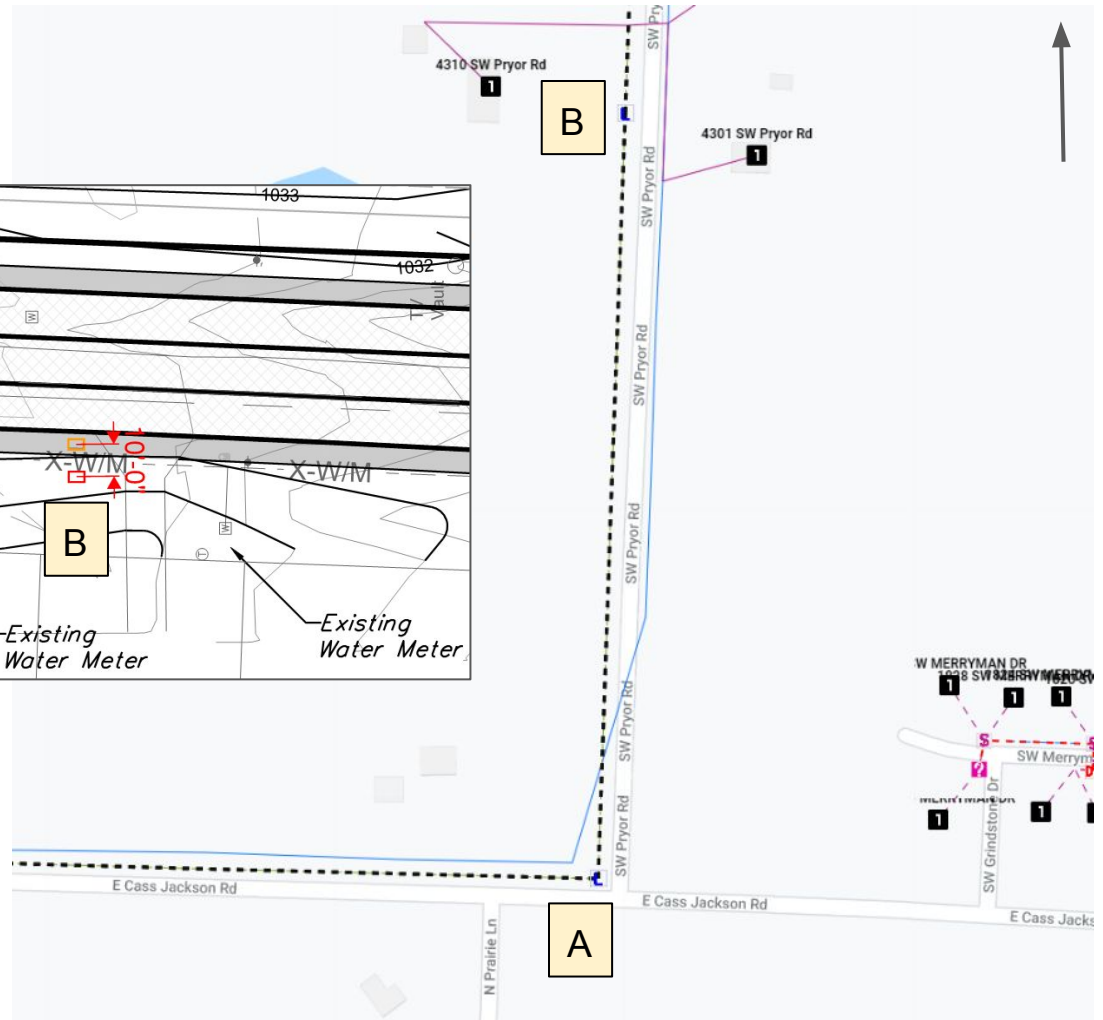
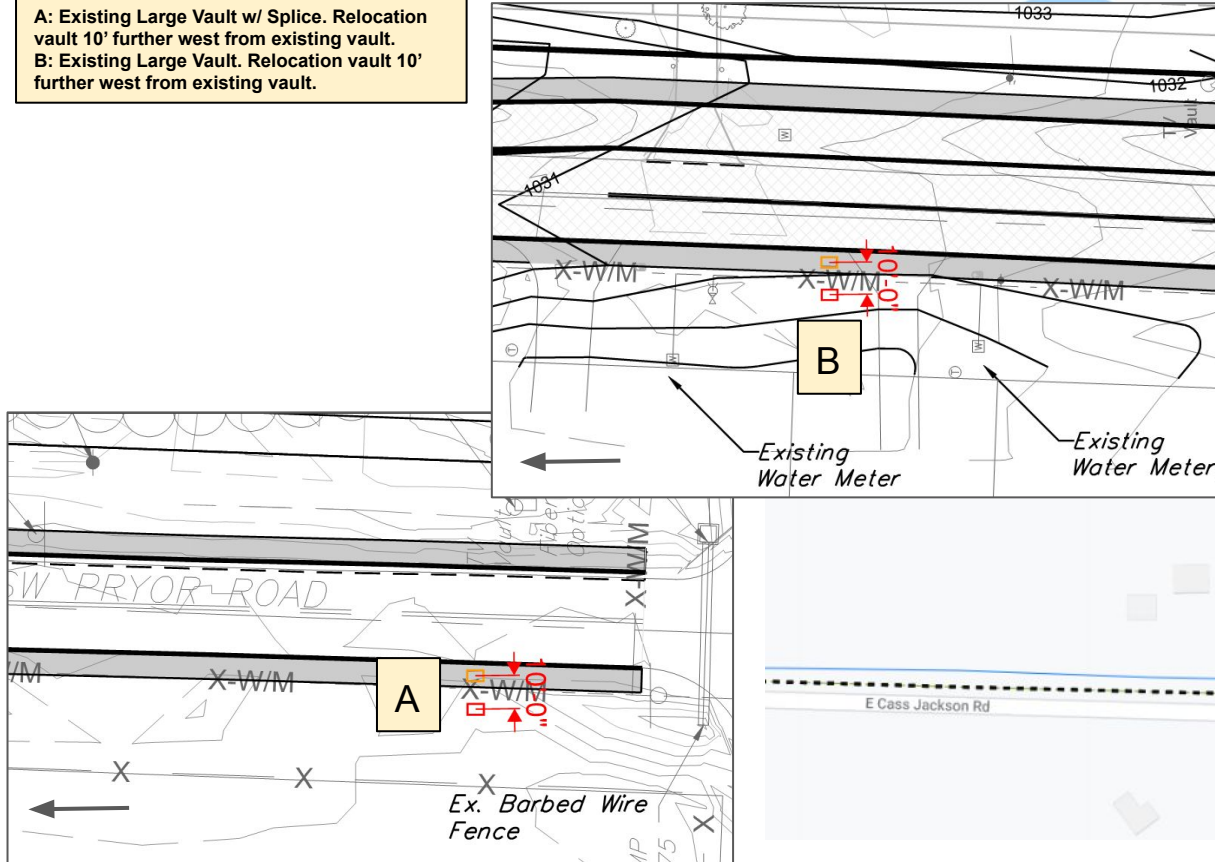
Contractor is responsible to ensure that municipality requirements are met, such as flowable fill and restoration.

Vault Relocation Instructions:

Vaults/Structures

A: Existing Large Vault w/ Splice. Relocation vault 10' further west from existing vault.

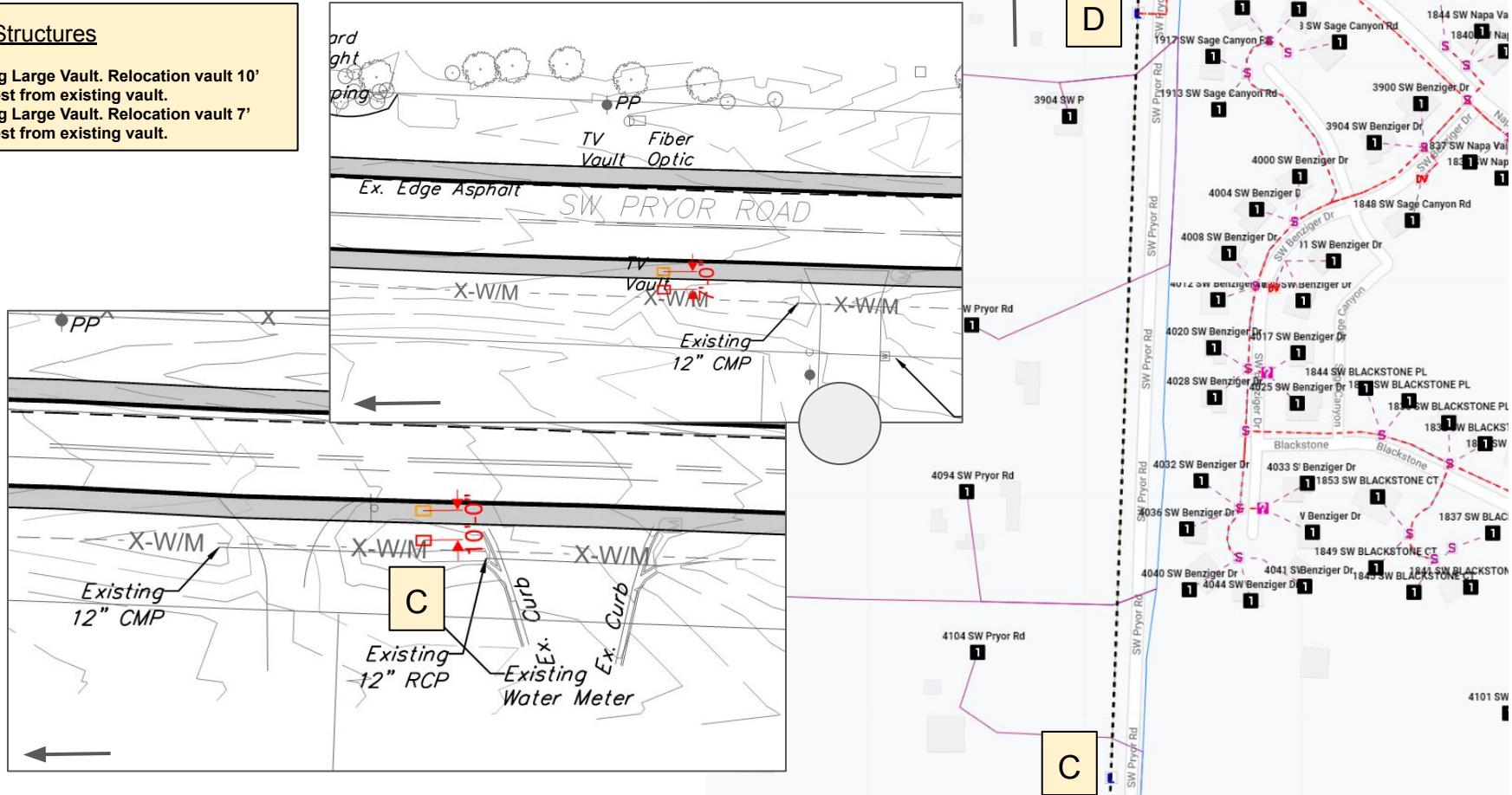
B: Existing Large Vault. Relocation vault 10' further west from existing vault.



Vault Relocation Instructions:

Vaults/Structures

- C: Existing Large Vault. Relocation vault 10' further west from existing vault.
- D: Existing Large Vault. Relocation vault 7' further west from existing vault.



Relocation of Conduit and Fiber:

Bore/Trench:

(A): 60 Ft. BB Suburban conditions
(A-B): 931 Ft. BB Suburban conditions.
(B-C): 1,300 Ft. BB Suburban conditions.
(C-D): 1,380 Ft. BB Suburban conditions.

Place Conduit

(A): Find and expose the 60' of conduit and adjust to meet the new vault location. Ensure conduit is a minimum of 4' below grade and that conduit is 10' or more from the edge of pavement.

(A-B): Place new 2-2" conduit from A to B at a depth of 4' below grade and 10' or more from edge of pavement.

(B-C): Place new 2-2" conduit from B to C at a depth of 4' below grade and 10' or more from edge of pavement.

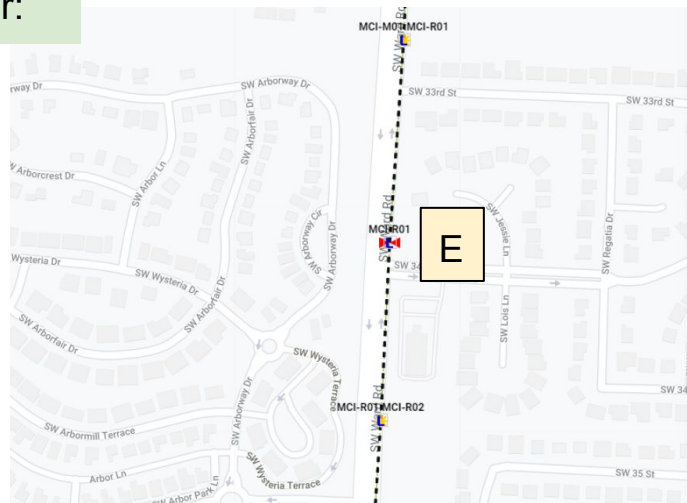
(C-D): Place new 2-2" conduit from C to D at a depth of 4' below grade and 10' or more from edge of pavement.

Fiber

BB: 13,153 Total Ft., 288ct MCI10-RO1:MSI-R02

Place new fiber from existing splice at A to existing splice at E, using new conduit along Pryor Rd.

Place 50' slack in every large vault along the BB run, should be 11 large vaults between A and E.

Splices/LCP

A: Existing Splice MCI-R02
E: Existing Splice MCI-R01

Span Distances

(A-B): ~ 931 linear Ft.
(B-C): ~ 1300 linear Ft.
(C-D): ~ 1380 linear Ft.
(D-E): ~ 8,992 linear Ft.

