

STARBUCKS COFFEE #62012
2050 NW Lowenstein Dr.
Lee's Summit, MO 64081



20-48974

HILTONDISPLAYS

125 HILLSIDE DRIVE • GREENVILLE SC 29607

P 800 353 9132 • F 864 242 2204

www.hiltondisplays.com

SITE PLAN

- A** 18" CHANNEL LETTERS
- B** 60" SIREN
- C** 30" TY/EO DIRECTIONAL
- D** CLEARANCE BAR
- E** PARKING SIGNS
- F** MONUMENT PANELS
- G** PRE-MENU BOARD
- H** DOS ON CANOPY / DCB
- I** 5 PANEL MENU BOARD

HILTONDISPLAYS
 125 HILLSIDE DRIVE • GREENVILLE SC 29607
 P 800 353 9132 • F 864 242 2204
 www.hiltondisplays.com

QID 20-48974

JOB NAME

Starbucks

LOCATION

2050 NW Lowenstein Dr.
 Lee's Summit, MO 64081

CUSTOMER CONTACT

SALESMAN / PM

Maddie Keller

DESIGNER

Chad Wike

DWG. DATE

8-24-2020

REV. DATE / REVISION

SCALE

As Noted

FILE

2020/Starbucks/Lees Summit MO/
 20-48974/ SB Lees Summit MO
 20-48974.cdr

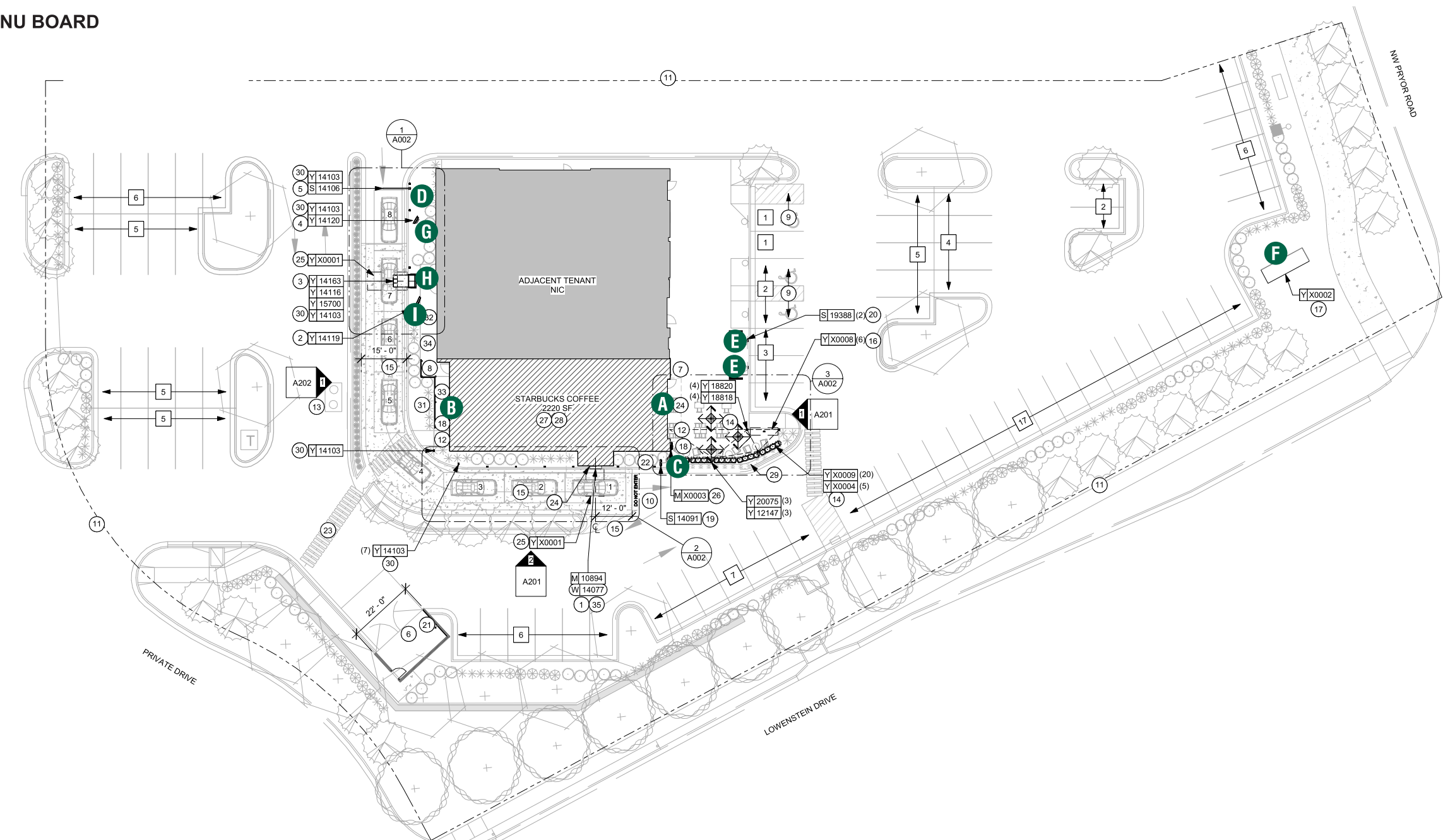
DESIGN SPECIFICATIONS ACCEPTED BY:

EST:	CLIENT:
SLS/PM:	LANDLORD:

THE INTENT OF THIS DRAWING IS TO SHOW A CONCEPTUAL REPRESENTATION OF THE PROPOSED SIGNAGE. DUE TO VARIATIONS IN PRINTING DEVICES AND SUBSTRATES, THE FINISHED PRODUCT MAY DIFFER SLIGHTLY FROM DRAWING.

UL Underwriters Laboratories Inc.

DRY	<input type="checkbox"/>
DAMP	<input type="checkbox"/>
WET	<input checked="" type="checkbox"/>

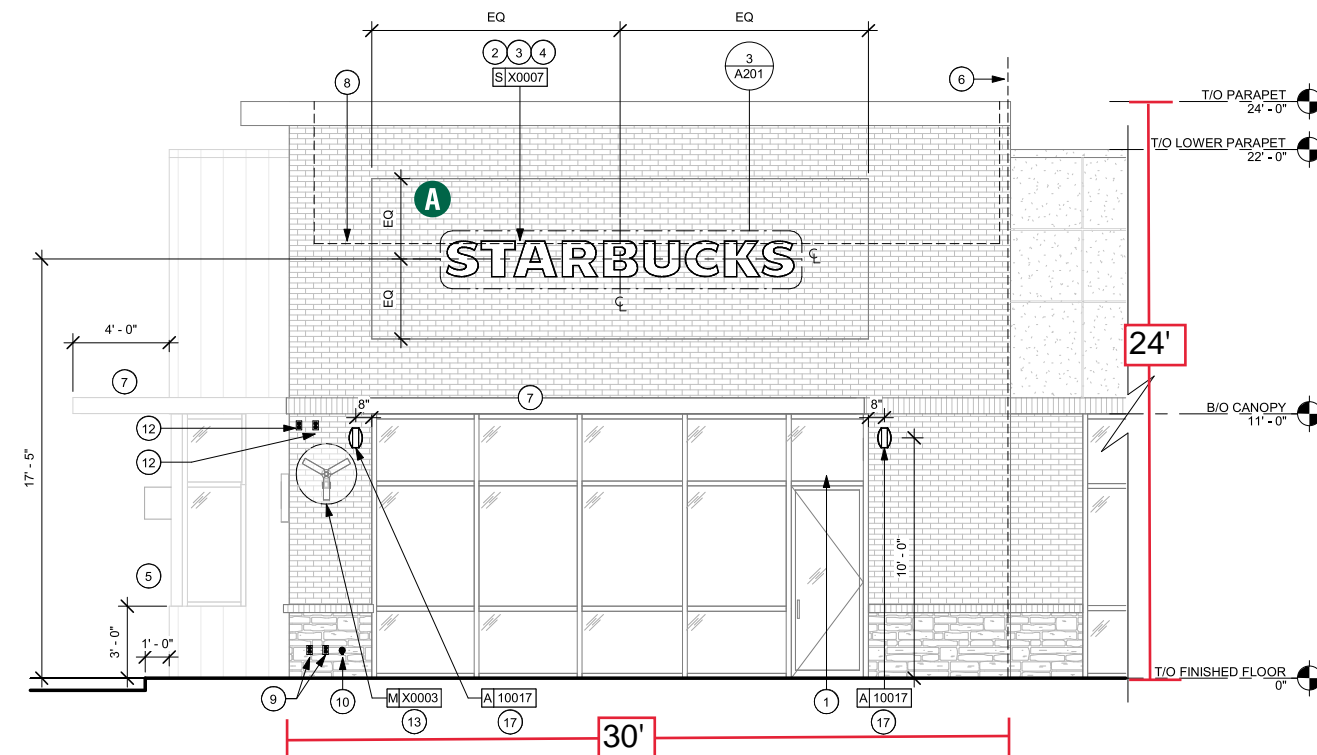


ARCHITECTURAL SITE PLAN - FOR REFERENCE ONLY



ELEVATION

- A** 18" CHANNEL LETTERS
- B** 60" SIREN
- C** 30" TY/EO DIRECTIONAL
- D** CLEARANCE BAR
- E** PARKING SIGNS
- F** MONUMENT PANELS
- G** PRE-MENU BOARD
- H** DOS ON CANOPY / DCB
- I** 5 PANEL MENU BOARD



① EAST ELEVATION
 Scale: 1/8" = 1' Wall Area: 24' x 30' = 720 sq ft

QID 20-48974

JOB NAME

Starbucks

LOCATION

2050 NW Lowenstein Dr.
 Lee's Summit, MO 64081

CUSTOMER CONTACT

SALESMAN / PM

Maddie Keller

DESIGNER

Chad Wike

DWG. DATE

8-24-2020

REV. DATE / REVISION

SCALE

As Noted

FILE

2020/Starbucks/Lees Summit MO/
 20-48974/ SB Lees Summit MO
 20-48974.cdr

DESIGN SPECIFICATIONS ACCEPTED BY:

EST:	CLIENT:
SLS/PM:	LANDLORD:

THE INTENT OF THIS DRAWING IS TO SHOW A CONCEPTUAL REPRESENTATION OF THE PROPOSED SIGNAGE. DUE TO VARIATIONS IN PRINTING DEVICES AND SUBSTRATES, THE FINISHED PRODUCT MAY DIFFER SLIGHTLY FROM DRAWING.



ELEVATION

- A** 18" CHANNEL LETTERS
- B** 60" SIREN
- C** 30" TY/EO DIRECTIONAL
- D** CLEARANCE BAR
- E** PARKING SIGNS
- F** MONUMENT PANELS
- G** PRE-MENU BOARD
- H** DOS ON CANOPY / DCB
- I** 5 PANEL MENU BOARD

QID 20-48974

JOB NAME

Starbucks

LOCATION

2050 NW Lowenstein Dr.
 Lee's Summit, MO 64081

CUSTOMER CONTACT

SALESMAN / PM

Maddie Keller

DESIGNER

Chad Wike

DWG. DATE

8-24-2020

REV. DATE / REVISION

SCALE

As Noted

FILE

2020/Starbucks/Lees Summit MO/
 20-48974/ SB Lees Summit MO
 20-48974.cdr

DESIGN SPECIFICATIONS ACCEPTED BY:

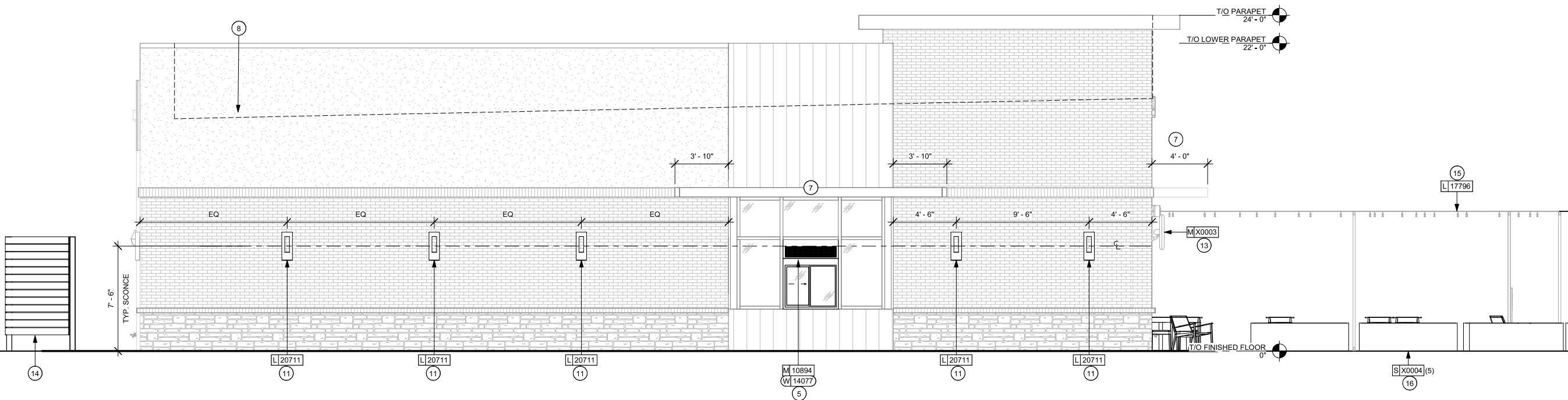
EST: CLIENT:

SLS/PM: LANDLORD:

THE INTENT OF THIS DRAWING IS TO SHOW A CONCEPTUAL REPRESENTATION OF THE PROPOSED SIGNAGE. DUE TO VARIATIONS IN PRINTING DEVICES AND SUBSTRATES, THE FINISHED PRODUCT MAY DIFFER SLIGHTLY FROM DRAWING.

 **Underwriters Laboratories Inc.**

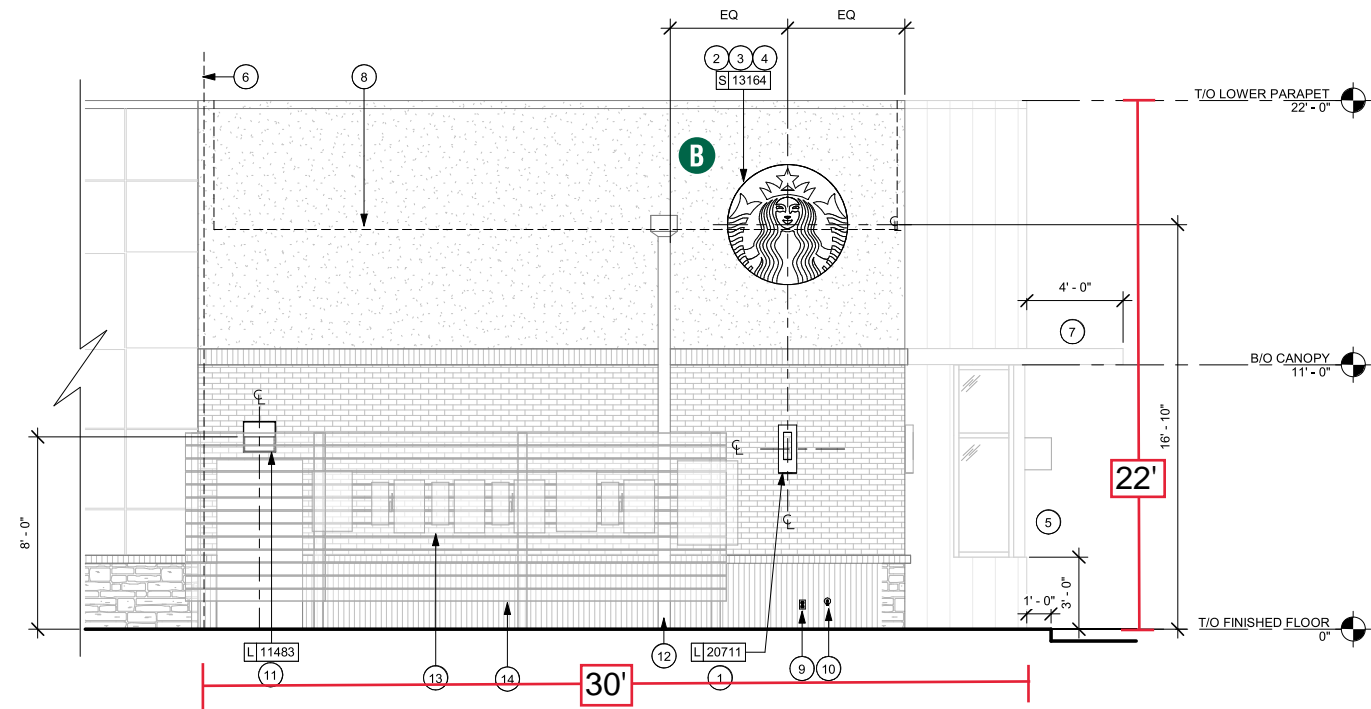
DRY	<input type="checkbox"/>
DAMP	<input type="checkbox"/>
WET	<input checked="" type="checkbox"/>



2 SOUTH ELEVATION
 Scale: 1/8" = 1'

ELEVATION

- A** 18" CHANNEL LETTERS
- B** 60" SIREN
- C** 30" TY/EO DIRECTIONAL
- D** CLEARANCE BAR
- E** PARKING SIGNS
- F** MONUMENT PANELS
- G** PRE-MENU BOARD
- H** DOS ON CANOPY / DCB
- I** 5 PANEL MENU BOARD



① WEST ELEVATION
 Scale: 1/8" = 1' **Wall Area: 22' x 30' = 660 sq ft**

QID 20-48974

JOB NAME

Starbucks

LOCATION

2050 NW Lowenstein Dr.
 Lee's Summit, MO 64081

CUSTOMER CONTACT

SALESMAN / PM

Maddie Keller

DESIGNER

Chad Wike

DWG. DATE

8-24-2020

REV. DATE / REVISION

SCALE

As Noted

FILE

2020/Starbucks/Lees Summit MO/
 20-48974/ SB Lees Summit MO
 20-48974.cdr

DESIGN SPECIFICATIONS ACCEPTED BY:

EST: CLIENT:

SLS/PM: LANDLORD:

THE INTENT OF THIS DRAWING IS TO SHOW A CONCEPTUAL REPRESENTATION OF THE PROPOSED SIGNAGE. DUE TO VARIATIONS IN PRINTING DEVICES AND SUBSTRATES, THE FINISHED PRODUCT MAY DIFFER SLIGHTLY FROM DRAWING.

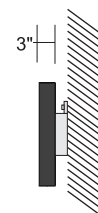
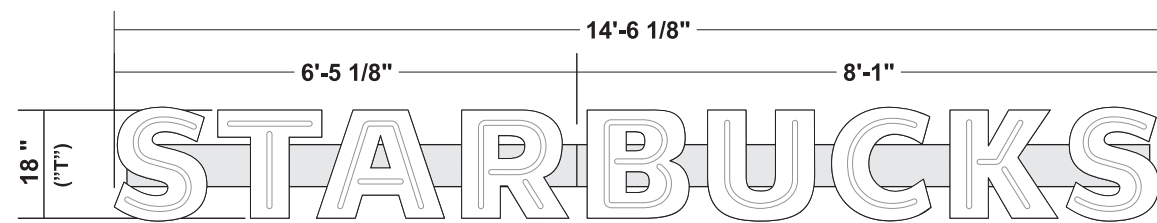
UL Underwriters Laboratories Inc. DRY DAMP WET

18" CHANNEL LETTERS - 2x7 RACEWAY

SBC-PART#

Qty 1

A



1 Front View

Scale: 3/8" = 1' (11x17 Paper)

22.94 SF

2 Side View

SPECIFICATIONS

- A** Fabricated illuminated channel letters from .063 fabricated aluminum with welded returns / architectural finish on letter backs. Exteriors to be painted to match RAL 7021M and interiors will be painted White.
- B** Low voltage wires to be run inside to remote power supply
- C** No letter faces
- D** 3/4" clear acrylic w/ second surface diffuser push thru faux neon.
- E** Illuminate with White Sloan Prism LEDs.
- F** Letters to be installed on Raceway. Paint color of Raceway to be determined by site.

COLOR LEGEND		
	PMS/PAINT	VINYL
	PMS 3425 C	3M 3630-76
	RAL 7021M	3M 3630-22
	PMS WHITE	3M 3630-20/ 7725-10 TRANSLUCENT OPAQUE
	PMS 369 C	NA
	REFL. WHITE	3M 680-10

SIMULATED NIGHT ILLUMINATION



HILTONDISPLAYS

125 HILLSIDE DRIVE • GREENVILLE SC 29607
P 800 353 9132 • F 864 242 2204
www.hiltondisplays.com

QID 20-48974

JOB NAME

Starbucks

LOCATION

2050 NW Lowenstein Dr.
Lee's Summit, MO 64081

CUSTOMER CONTACT

SALESMAN / PM

Maddie Keller

DESIGNER

Chad Wike

DWG. DATE

8-24-2020

REV. DATE / REVISION

SCALE

As Noted

FILE

2020/Starbucks/Lees Summit MO/
20-48974/ SB Lees Summit MO
20-48974.cdr

DESIGN SPECIFICATIONS ACCEPTED BY:

EST:	CLIENT:
SLS/PM:	LANDLORD:

THE INTENT OF THIS DRAWING IS TO SHOW A CONCEPTUAL REPRESENTATION OF THE PROPOSED SIGNAGE. DUE TO VARIATIONS IN PRINTING DEVICES AND SUBSTRATES, THE FINISHED PRODUCT MAY DIFFER SLIGHTLY FROM DRAWING.



60" ILLUMINATED SIREN

Qty. 1

SBC-S13164-SL

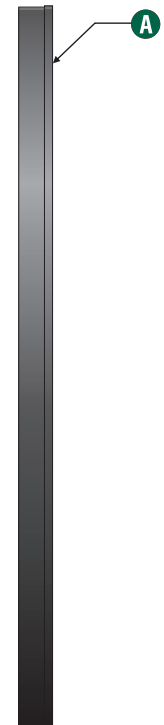
B



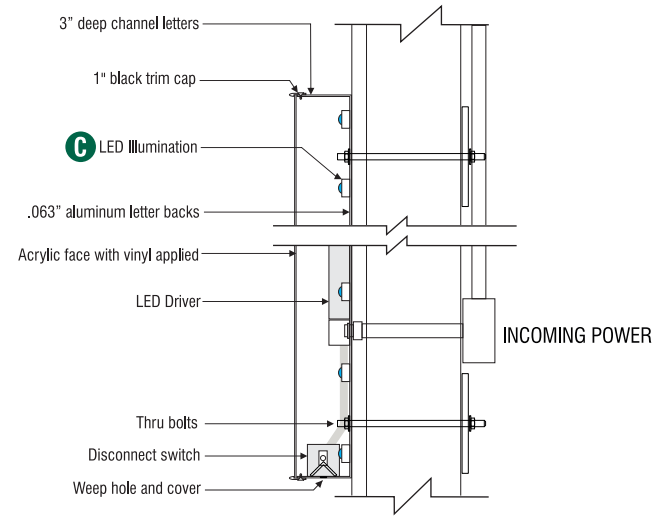
1 Front View

3/4" = 1'-0" (11x17 Paper)

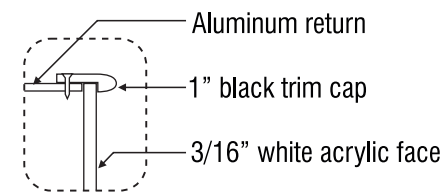
3" (76mm)



2 Side View



3 Disk Section View Typ.



4 Enlarged Detail

SPECIFICATIONS:

- A** Single faced internally illuminated wall mount logo disk. Cabinet to be 3" deep, fabricated aluminum returns and back. Paint cabinet black. Faces to be 3/16" white Plex with 1" black trimcap
- B** Graphics of logo to be 1st surface 3M Translucent Scotchcal vinyl- Holly Green #3630-76. Siren to show thru White.
- C** Internally illuminated logo disk with Sloan Prism Enlighten 6500K white LEDs

COLOR LEGEND		
	PMS/PAIN	VINYL
	PMS 3425 C	3M 3630-76
	RAL 7021M	3M 3630-22
	PMS WHITE	3M 3630-20/ 7725-10 TRANSLUCENT OPAQUE
	PMS 369 C	NA
	REFL. WHITE	3M 680-10

Wall Mount EVOLVED			
Size	Sq.Ft.	Sq.M.	Volts
60" (1524mm)	19.62	1.82	120/277

HILTONDISPLAYS

125 HILLSIDE DRIVE • GREENVILLE SC 29607
P 800 353 9132 • F 864 242 2204
www.hiltondisplays.com

QID 20-48974

JOB NAME

Starbucks

LOCATION

2050 NW Lowenstein Dr.
Lee's Summit, MO 64081

CUSTOMER CONTACT

SALESMAN / PM

Maddie Keller

DESIGNER

Chad Wike

DWG. DATE

8-24-2020

REV. DATE / REVISION

SCALE

As Noted

FILE

2020/Starbucks/Lees Summit MO/
20-48974/ SB Lees Summit MO
20-48974.cdr

DESIGN SPECIFICATIONS ACCEPTED BY:

EST:	CLIENT:
SLS/PM:	LANDLORD:

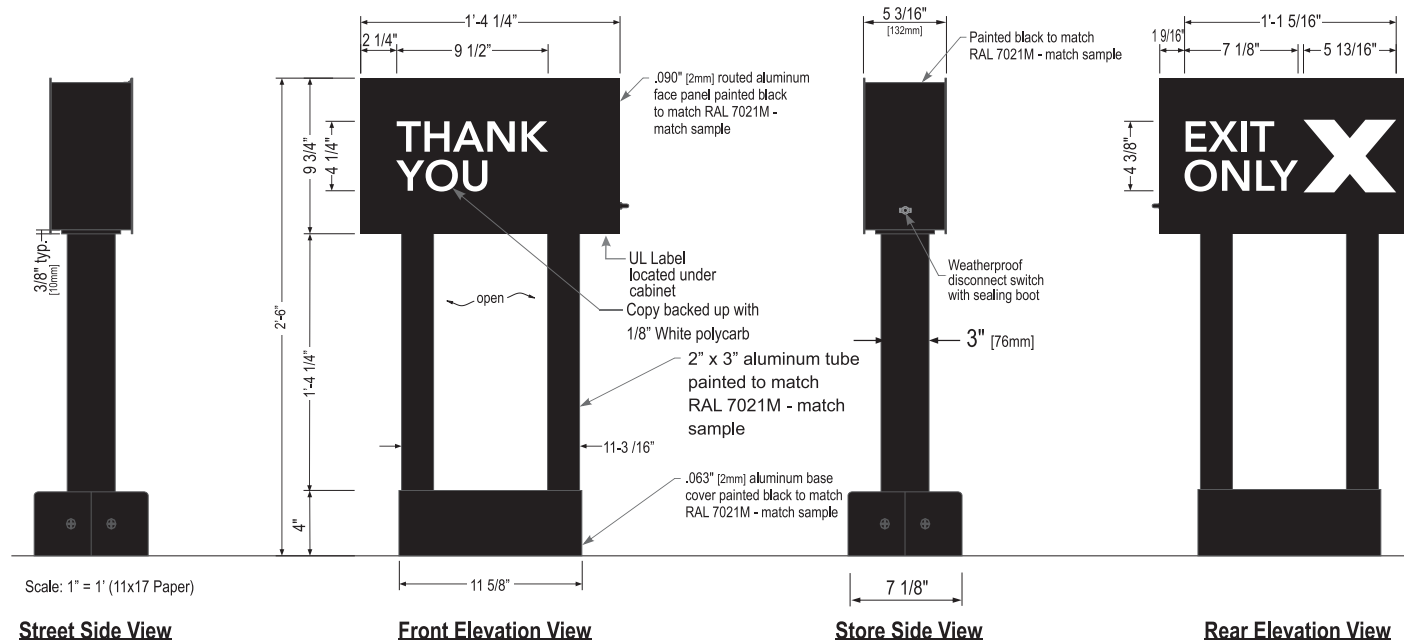
THE INTENT OF THIS DRAWING IS TO SHOW A CONCEPTUAL REPRESENTATION OF THE PROPOSED SIGNAGE. DUE TO VARIATIONS IN PRINTING DEVICES AND SUBSTRATES, THE FINISHED PRODUCT MAY DIFFER SLIGHTLY FROM DRAWING.



30" ILLUMINATED DIRECTIONAL TY / EO

SBC-AD3016-SL

Qty. 1



Sign Specifications:

Fabricated .090" Aluminum cabinet painted black to match RAL 7021 as shown. Directional copy and graphic routed and backed up with 1/8" white polycarbonate. All polycarbonate face elements to be attached to interior face panels with welded studs. All interior portions of sign cabinet painted white. Graphic elements illuminated with Sloan Prism Enlighten LEDs. LEDs mounted on internal baffle with self contained LED power supply. All components accessible through face of cabinet.

Support:

Support structure to be welded aluminum tube and plate construction painted black to match RAL 7021 Plate to be constructed to be retro-fittable to existing sign foundations. All foundations new and used to be analyzed for suitability and must meet all local city or state code regulations.

Sign Area: 10" x 1'5" = 1.2 sq ft

HILTONDISPLAYS
 125 HILLSIDE DRIVE • GREENVILLE SC 29607
 P 800 353 9132 • F 864 242 2204
 www.hiltondisplays.com

QID 20-48974
JOB NAME
Starbucks
LOCATION
2050 NW Lowenstein Dr. Lee's Summit, MO 64081
CUSTOMER CONTACT
SALESMAN / PM
Maddie Keller
DESIGNER
Chad Wike
DWG. DATE
8-24-2020
REV. DATE / REVISION
SCALE
As Noted
FILE
2020/Starbucks/Lees Summit MO/ 20-48974/ SB Lees Summit MO 20-48974.cdr

DESIGN SPECIFICATIONS ACCEPTED BY:

EST:	CLIENT:
SLS/PM:	LANDLORD:

THE INTENT OF THIS DRAWING IS TO SHOW A CONCEPTUAL REPRESENTATION OF THE PROPOSED SIGNAGE. DUE TO VARIATIONS IN PRINTING DEVICES AND SUBSTRATES, THE FINISHED PRODUCT MAY DIFFER SLIGHTLY FROM DRAWING.

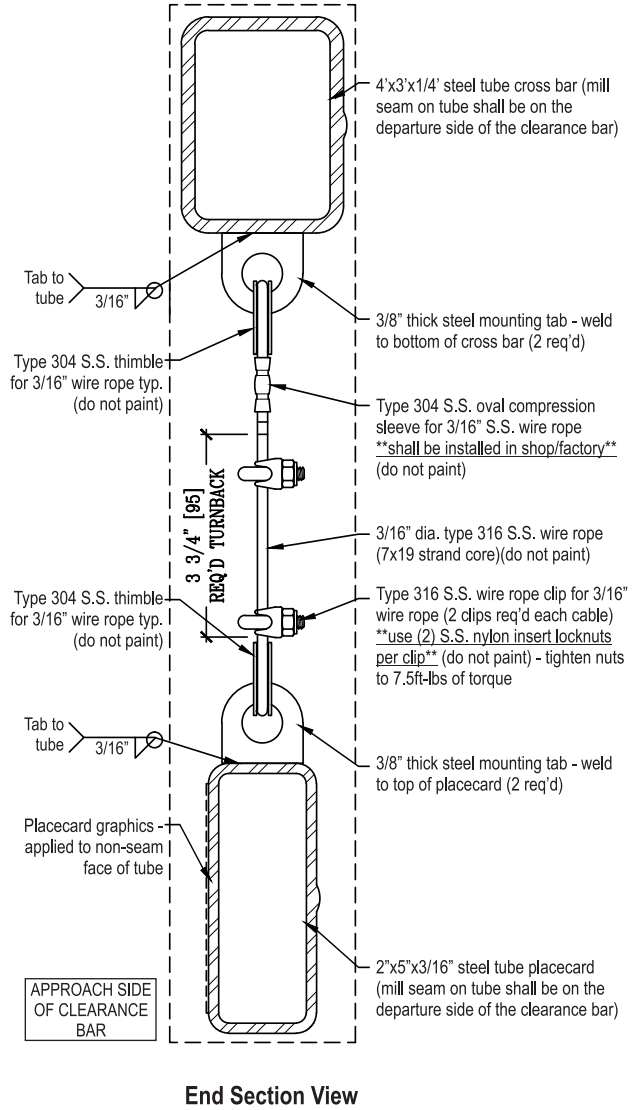
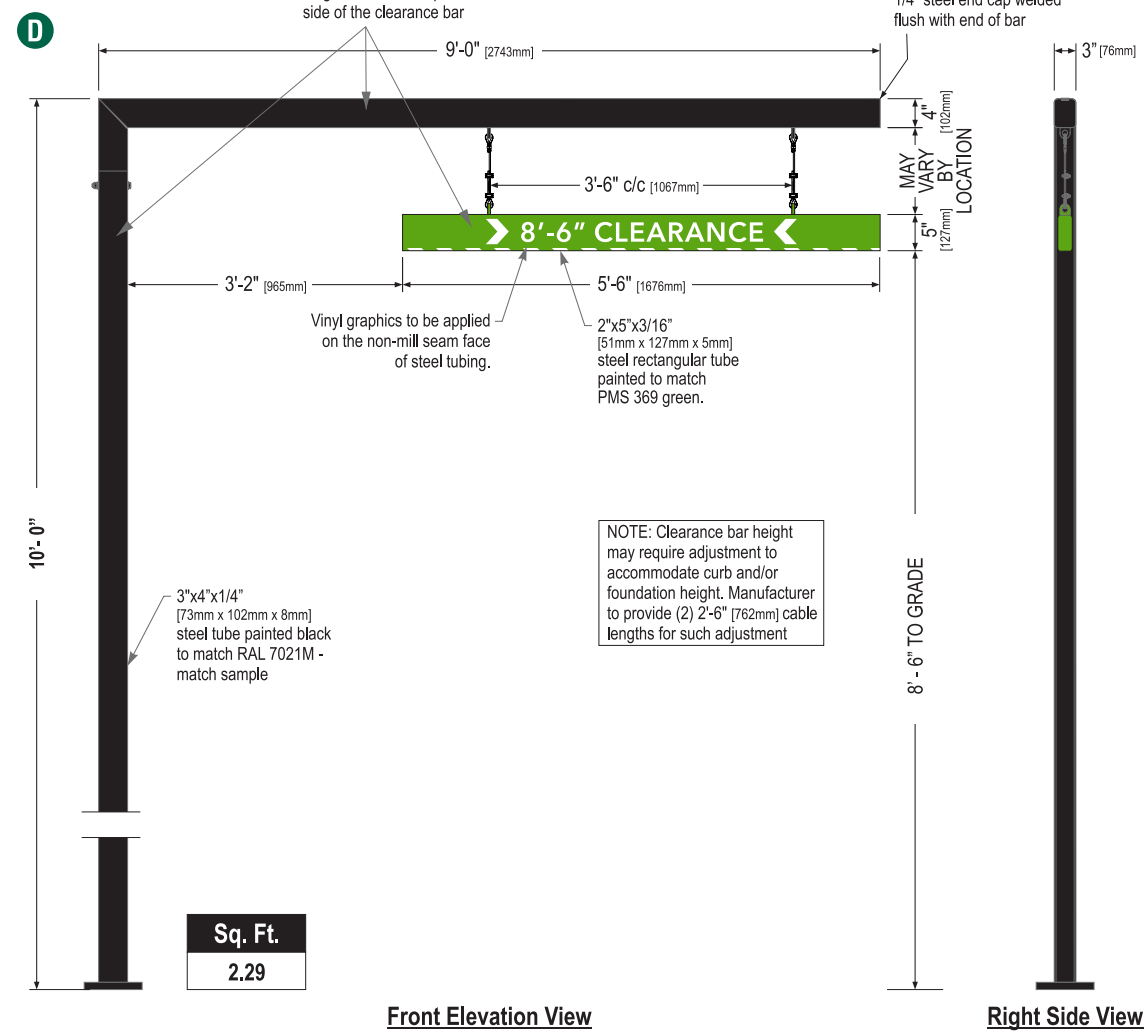
COLOR LEGEND		
	PMS/PAINT	VINYL
	PMS 3425 C	3M 3630-76
	RAL 7021M	3M 3630-22
	PMS WHITE	3M 3630-20/ 7725-10 TRANSLUCENT OPAQUE
	PMS 369 C	NA
	REFL. WHITE	3M 680-10

Underwriters Laboratories Inc.

CLEARANCE BAR SBC-S14106-SHB-10

Qty. 1

(Standard Wind Load)



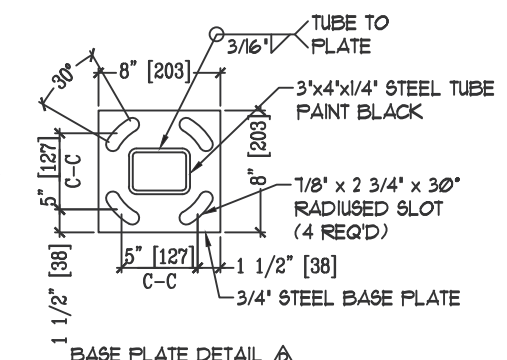
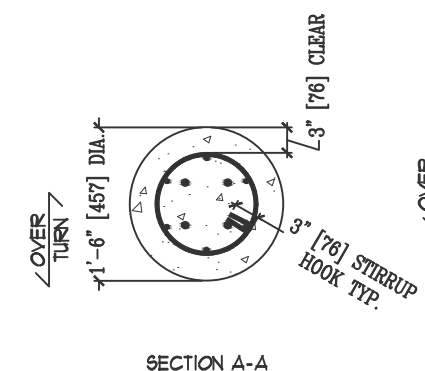
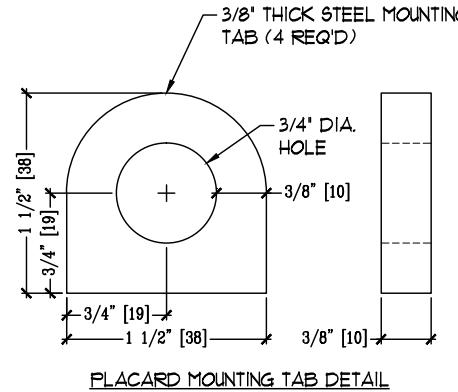
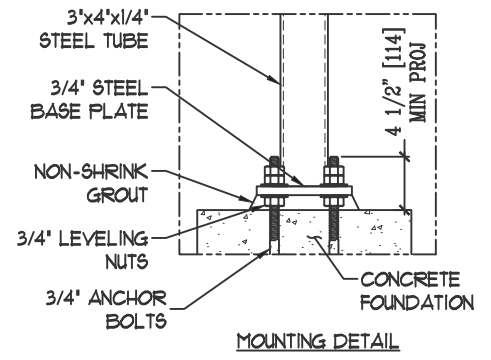
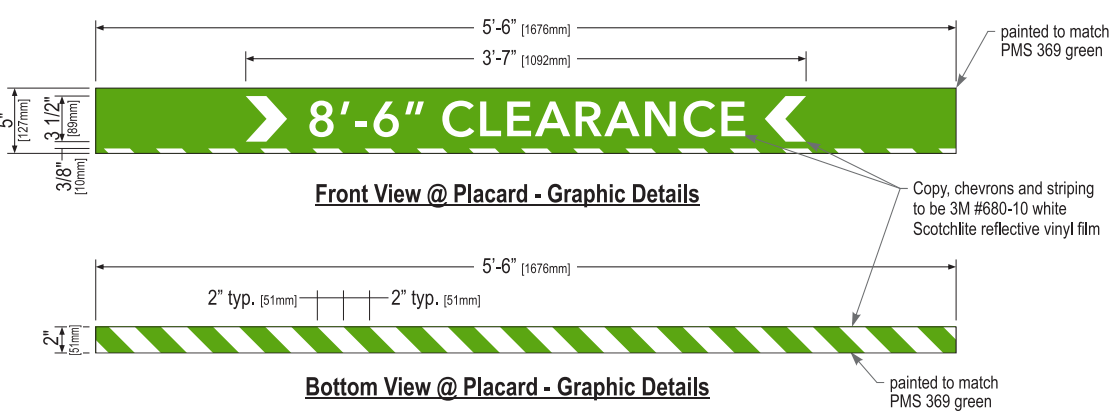
Sign Specifications:

Scraper Bar:

- 2"x5" [51mm x 127mm] steel tube painted to match PMS 369 green. w/ Flush steel end caps painted to match PMS 369 green.
- Copy and chevrons to be 1st surface computer cut 3M #680-10 white Scotchlite reflective vinyl film.
- Bottom striping to be 1st surface computer cut 3M #680-10 white Scotchlite reflective vinyl film. Striping extends 3/8" [10mm] onto front face.
- Suspend from support with SS cable & hardware. Cable provided requires field adjustment for proper clearance height.

Support:

- Supporting structure will be all welded steel tube construction painted black to match RAL 7021M as per approved shop drawings.
- Base tube will be constructed so that it can be retro-fittable to existing sign foundations. All foundations, existing and new must be analyzed for suitability and must meet all local city or state codes regulations.
- Anchor bolts painted black to match RAL 7021M .



COLOR LEGEND		
	PMS/PAINT	VINYL
	PMS 3425 C	3M 3630-76
	RAL 7021M	3M 3630-22
	PMS WHITE	3M 3630-20/ 7725-10 TRANSLUCENT OPAQUE
	PMS 369 C	NA
	REFL. WHITE	3M 680-10

HILTON DISPLAYS
 125 HILLSIDE DRIVE • GREENVILLE SC 29607
 P 800 353 9132 • F 864 242 2204
 www.hiltondisplays.com

QID 20-48974

JOB NAME

Starbucks

LOCATION

2050 NW Lowenstein Dr.
Lee's Summit, MO 64081

CUSTOMER CONTACT

SALESMAN / PM

Maddie Keller

DESIGNER

Chad Wike

DWG. DATE

8-24-2020

REV. DATE / REVISION

SCALE

As Noted

FILE

2020/Starbucks/Lees Summit MO/
20-48974/ SB Lees Summit MO
20-48974.cdr

DESIGN SPECIFICATIONS ACCEPTED BY:

EST: CLIENT:

SLS/PM: LANDLORD:

THE INTENT OF THIS DRAWING IS TO SHOW A CONCEPTUAL REPRESENTATION OF THE PROPOSED SIGNAGE. DUE TO VARIATIONS IN PRINTING DEVICES AND SUBSTRATES, THE FINISHED PRODUCT MAY DIFFER SLIGHTLY FROM DRAWING.

Underwriters Laboratories Inc.

DRY DAMP WET

CUSTOMER PARKING SIGN

SBC-PK-1812-UC-54

Qty. 2

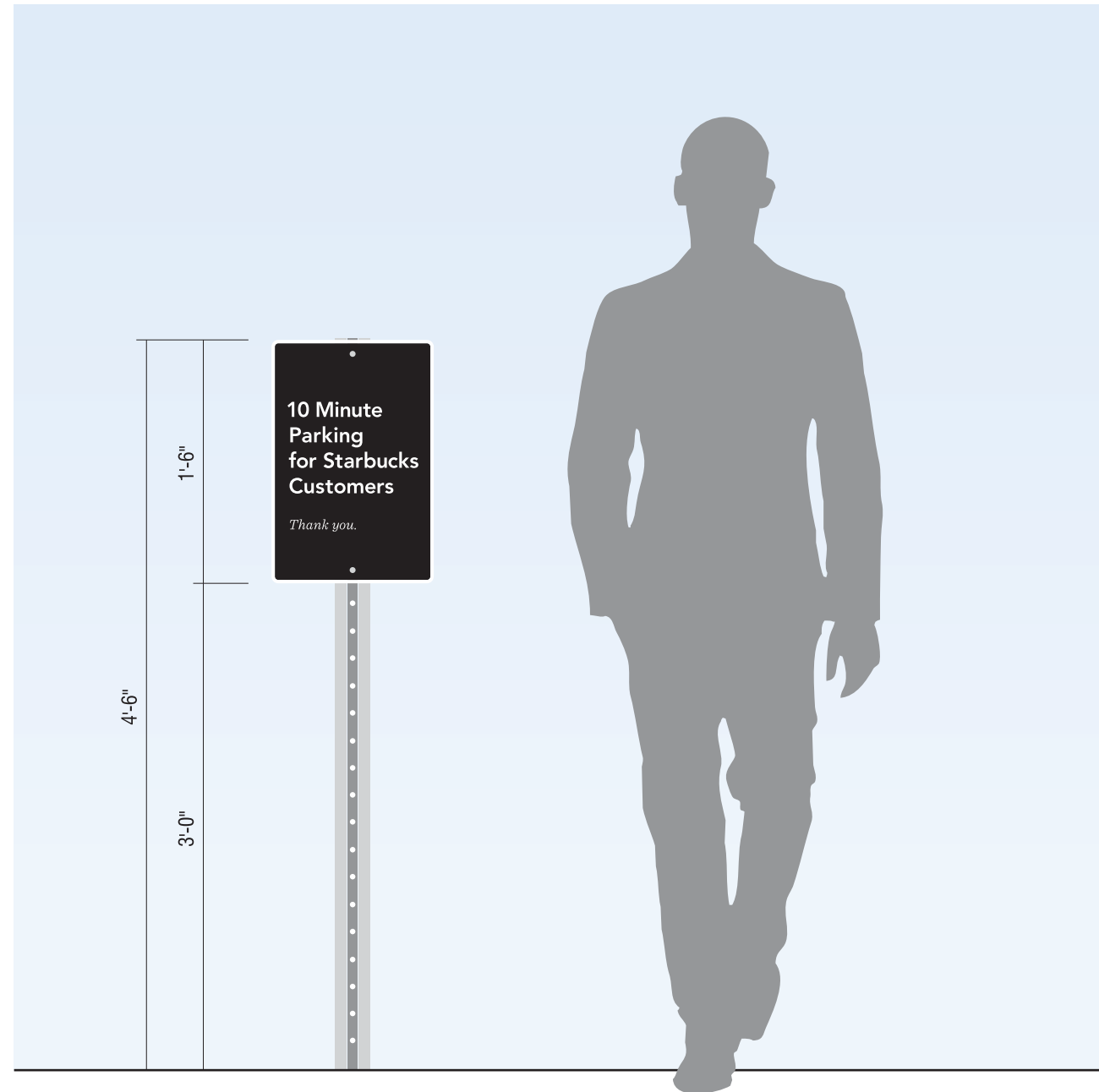
E



1 Front View
Scale: 3" = 1'-0"

SPECIFICATIONS

- A. .090" ALUMINUM PARKING SIGN TO BE PAINTED TO MATCH RAL 7021 BLACK
- B. FACE TO HAVE FIRST SURFACE 3M 280-10 REFLECTIVE WHITE VINYL GRAPHICS
3M 3630-76 GREEN
- C. SIGN PANEL TO BE FASTENED TO U-CHANNEL POST W/ (QTY. 2) 5/16"x2" BOLTS
- D. SIGN POST TO BE U-CHANNEL (4'-6" TALL, 2 1/4" WIDE)



2 Typical Elevation
Scale: 1" = 1'-0"

COLOR LEGEND		
	PMS/PAINT	VINYL
	NA	3M 3630-22
	NA	3M 280-10 Reflective

HILTONDISPLAYS

125 HILLSIDE DRIVE • GREENVILLE SC 29607
P 800 353 9132 • F 864 242 2204
www.hiltondisplays.com

QID 20-48974

JOB NAME

Starbucks

LOCATION

2050 NW Lowenstein Dr.
Lee's Summit, MO 64081

CUSTOMER CONTACT

SALESMAN / PM

Maddie Keller

DESIGNER

Chad Wike

DWG. DATE

8-24-2020

REV. DATE / REVISION

SCALE

As Noted

FILE

2020/Starbucks/Lees Summit MO/
20-48974/ SB Lees Summit MO
20-48974.cdr

DESIGN SPECIFICATIONS ACCEPTED BY:

EST:	CLIENT:
SLS/PM:	LANDLORD:

THE INTENT OF THIS DRAWING IS TO SHOW A CONCEPTUAL REPRESENTATION OF THE PROPOSED SIGNAGE. DUE TO VARIATIONS IN PRINTING DEVICES AND SUBSTRATES, THE FINISHED PRODUCT MAY DIFFER SLIGHTLY FROM DRAWING.



MONUMENT PANELS

SBC-PART#

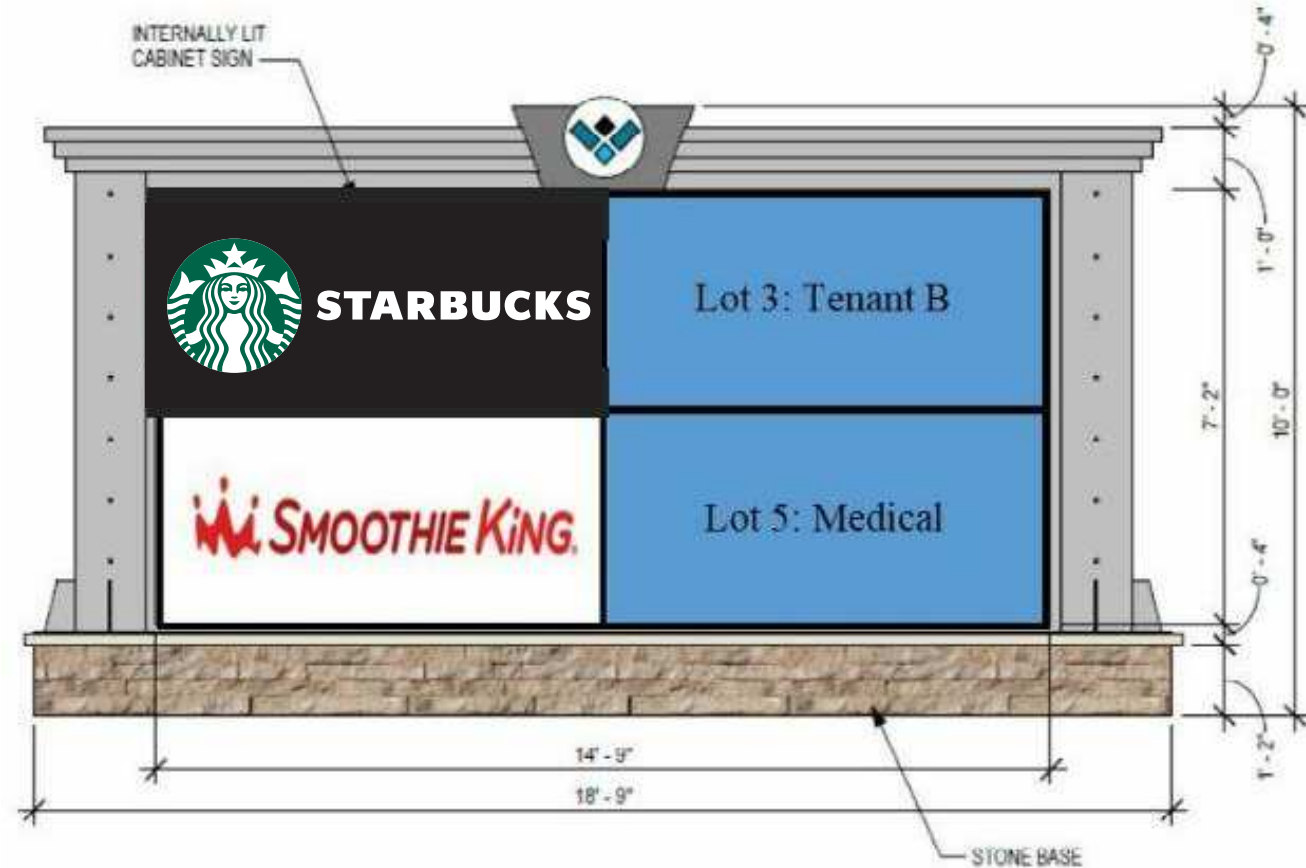
Qty. 2 z

F

SURVEY REQUIRED



MONUMENT SIGN VISIBILITY ANALYSIS



HILTONDISPLAYS

125 HILLSIDE DRIVE • GREENVILLE SC 29607
P 800 353 9132 • F 864 242 2204
www.hiltondisplays.com

QID 20-48974

JOB NAME

Starbucks

LOCATION

2050 NW Lowenstein Dr.
Lee's Summit, MO 64081

CUSTOMER CONTACT

SALESMAN / PM

Maddie Keller

DESIGNER

Chad Wike

DWG. DATE

8-24-2020

REV. DATE / REVISION

SCALE

As Noted

FILE

2020/Starbucks/Lees Summit MO/
20-48974/ SB Lees Summit MO
20-48974.cdr

DESIGN SPECIFICATIONS ACCEPTED BY:

EST:	CLIENT:
SLS/PM:	LANDLORD:

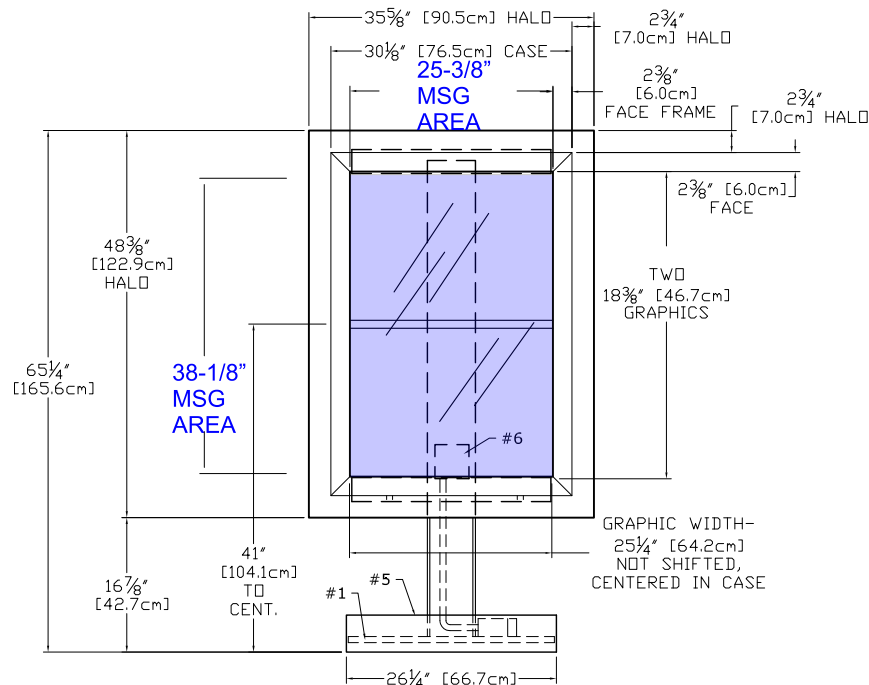
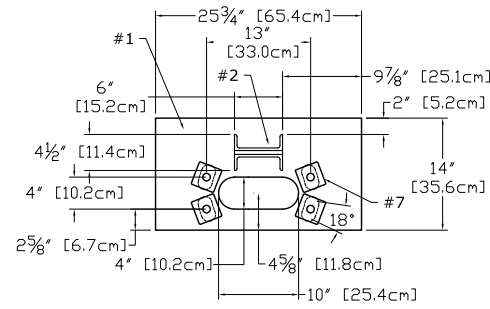
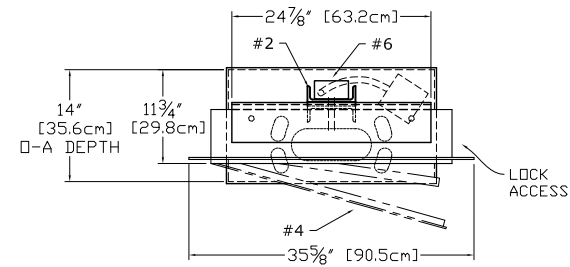
THE INTENT OF THIS DRAWING IS TO SHOW A CONCEPTUAL REPRESENTATION OF THE PROPOSED SIGNAGE. DUE TO VARIATIONS IN PRINTING DEVICES AND SUBSTRATES, THE FINISHED PRODUCT MAY DIFFER SLIGHTLY FROM DRAWING.



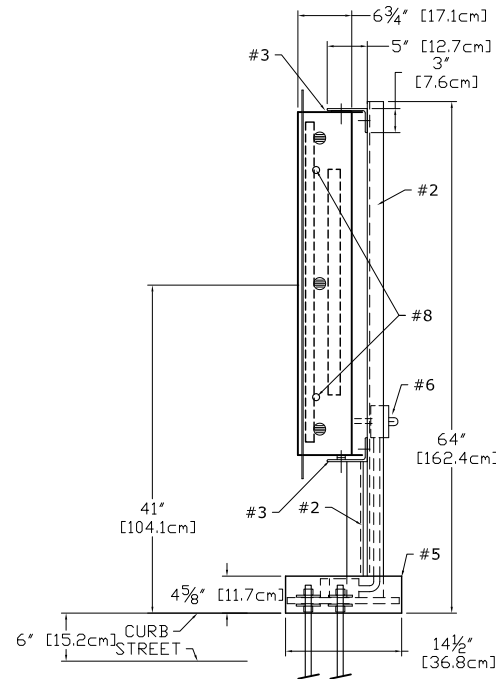
PRE-MENU BOARD - FREESTANDING

Qty. 1

G



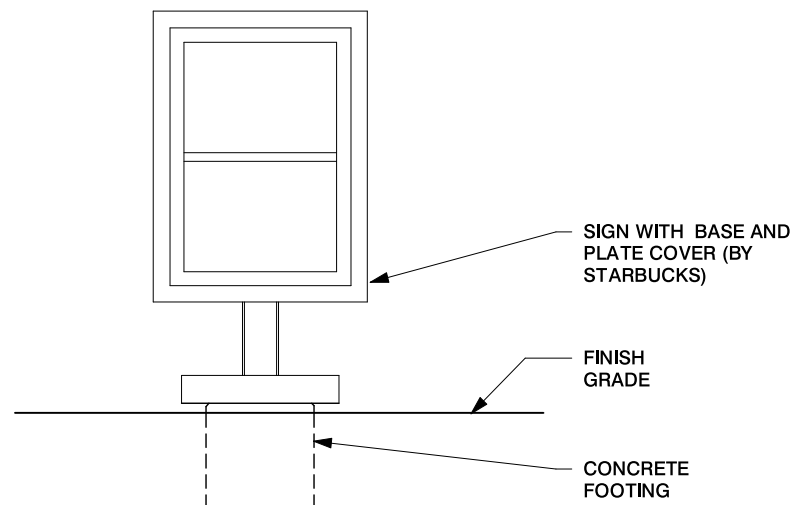
MESSAGE AREA = (25.375 * 38.125) / 144 = 6.72 SQ FT



- #1 - 3/4" [19mm] STEEL BASE PLATE w/ 18deg HOLES PATTERN LEFT SQUARE / SYMETRICAL
- #2 - C6X10.5 (6"x2"x5/16") STEEL POST (1x)
- #3 - 5"x3"x3/4" STEEL SUPPORT ANGLES (2x) (WELDED TO STEEL POST)
- #4 - EXTRUDED ALUMINUM MENU BOARD (1x) ONE SPLIT PANEL LIGHTBOX TWO 25 1/4"x18 3/8" GRAPHICS GRAPHIC ASSEMBLY CENTERED, NOT SHIFTED STANDARD LED TUBE LIGHTING, SIDE LOCKS
- #5 - WELDED ALUMINUM BASE COVER
- #6 - WATER-TIGHT BOX w/SWITCHES & SENSOR, RIDGID CONDUIT RUN TO SECOND EXT BOX BELOW BASE COVER, 120 WATT, 0.30Aac
- #7 - 8 BASE WASHERS, 1/4" THICK
- #8 - TWO SIDE MOUNT LOCKS, RETAIN EXISTING KEY #E3-26-819-15

DTE - PRE-MENU FREESTANDING

Scale: 1/2" = 1' (11x17 paper)



DTE - PRE-MENU FREESTANDING

Scale: 3/8" = 1' (11x17 paper)

HILTONDISPLAYS
 125 HILLSIDE DRIVE • GREENVILLE SC 29607
 P 800 353 9132 • F 864 242 2204
 www.hiltondisplays.com

QID 20-48974

JOB NAME

Starbucks

LOCATION

2050 NW Lowenstein Dr.
 Lee's Summit, MO 64081

CUSTOMER CONTACT

SALESMAN / PM

Maddie Keller

DESIGNER

Chad Wike

DWG. DATE

8-24-2020

REV. DATE / REVISION

SCALE

As Noted

FILE

2020/Starbucks/Lees Summit MO/
 20-48974/ SB Lees Summit MO
 20-48974.cdr

DESIGN SPECIFICATIONS ACCEPTED BY:

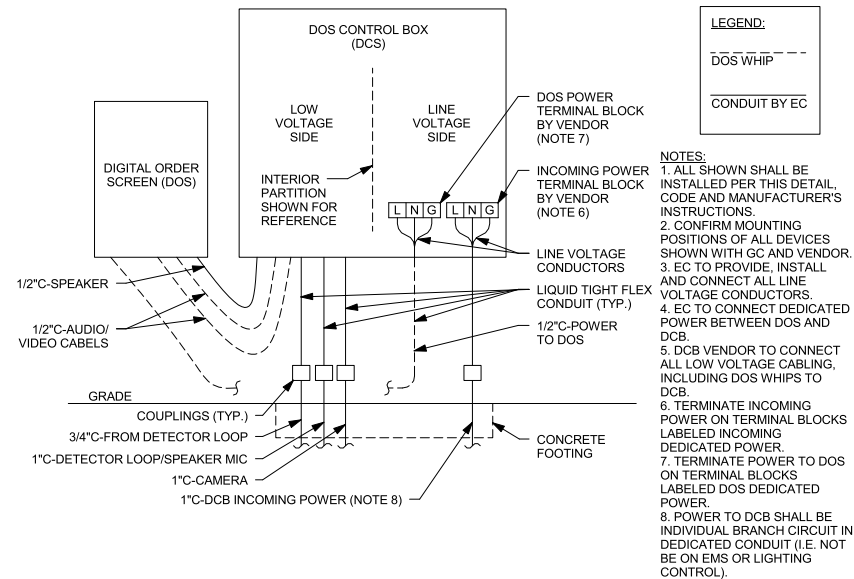
EST:	CLIENT:
SLS/PM:	LANDLORD:

THE INTENT OF THIS DRAWING IS TO SHOW A CONCEPTUAL REPRESENTATION OF THE PROPOSED SIGNAGE. DUE TO VARIATIONS IN PRINTING DEVICES AND SUBSTRATES, THE FINISHED PRODUCT MAY DIFFER SLIGHTLY FROM DRAWING.



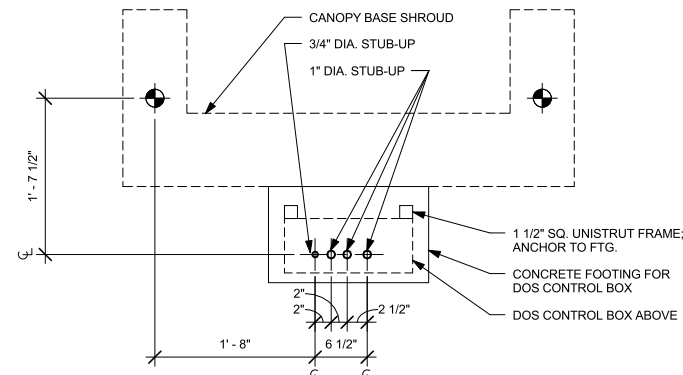
DOS ON CANOPY - DCB ON UNISTRUT

Qty. 1



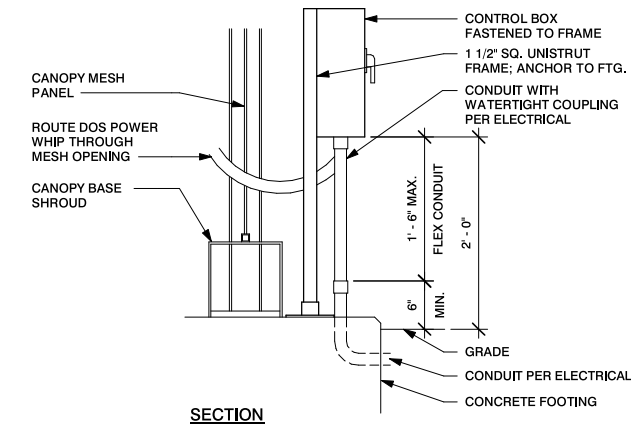
DTE - DOS CONTROL BOX WIRING

Scale: 1/2" = 1' (11x17 paper)



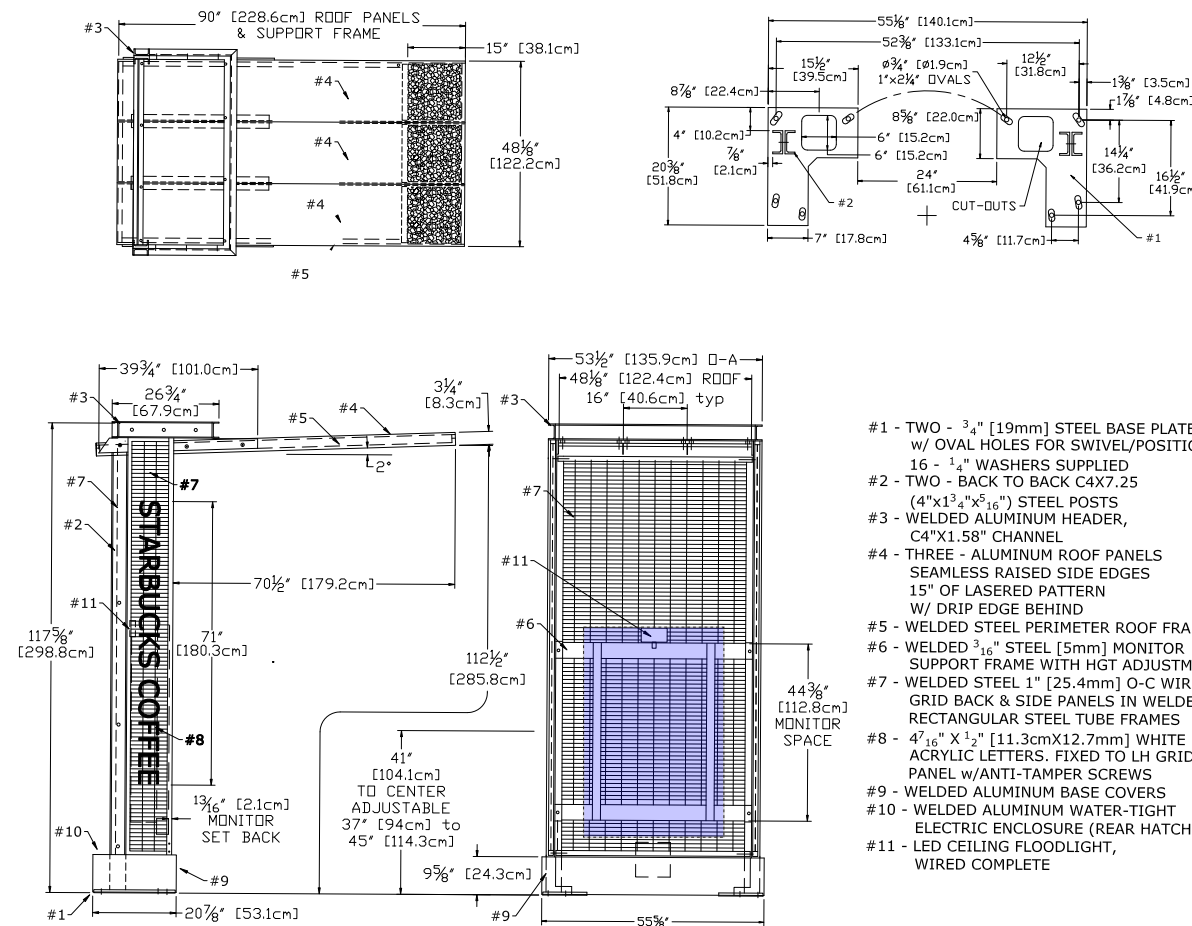
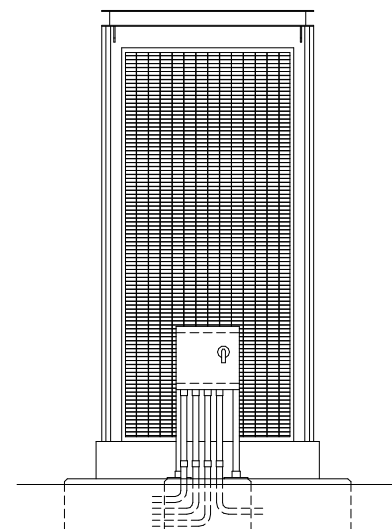
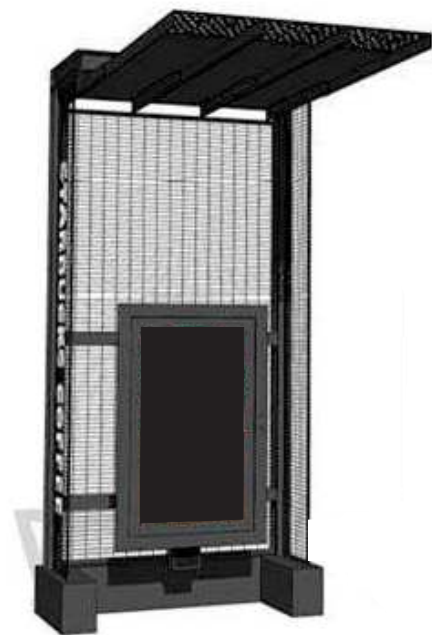
DTE - DOS CONTROL BOX CONDUIT STUB-UPS AT CANOPY

Scale: 1/2" = 1' (11x17 paper)



DTE - DOS CONTROL BOX AT CANOPY

Scale: 1/2" = 1' (11x17 paper)



DTE - CANOPY

Scale: 1/4" = 1' (11x17 paper)

HILTON DISPLAYS
 125 HILLSIDE DRIVE • GREENVILLE SC 29607
 P 800 353 9132 • F 864 242 2204
 www.hiltondisplays.com

QID 20-48974

JOB NAME

Starbucks

LOCATION

2050 NW Lowenstein Dr.
 Lee's Summit, MO 64081

CUSTOMER CONTACT

SALESMAN / PM

Maddie Keller

DESIGNER

Chad Wike

DWG. DATE

8-24-2020

REV. DATE / REVISION

SCALE

As Noted

FILE

2020/Starbucks/Lees Summit MO/
 20-48974/ SB Lees Summit MO
 20-48974.cdr

DESIGN SPECIFICATIONS ACCEPTED BY:

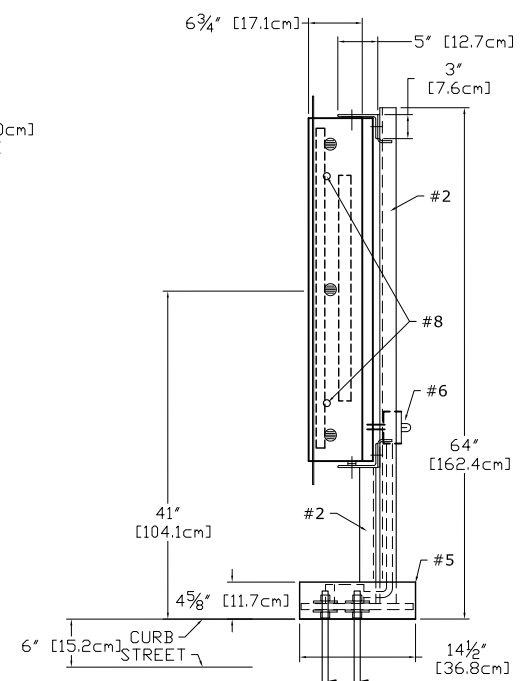
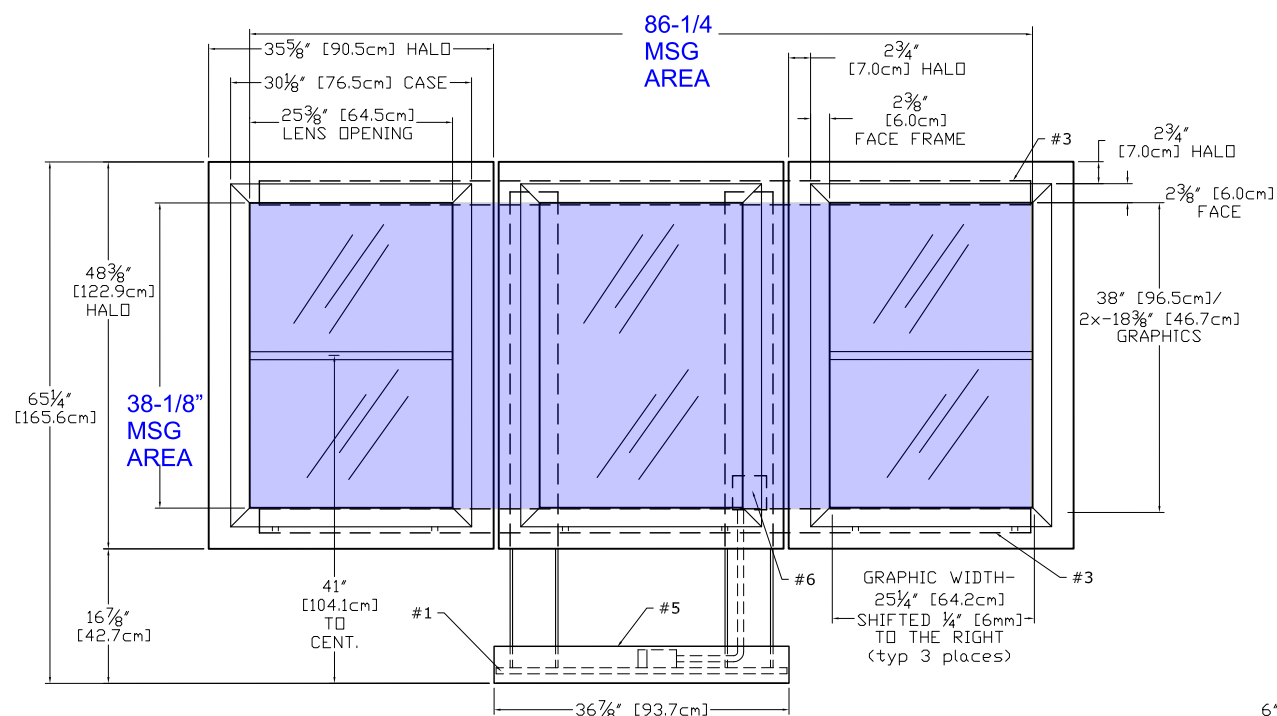
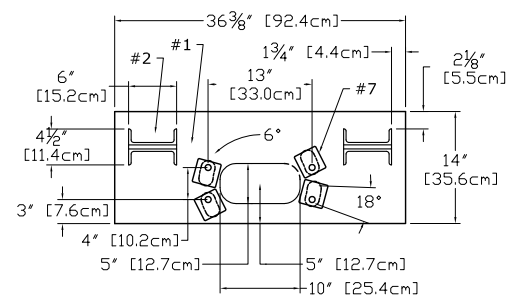
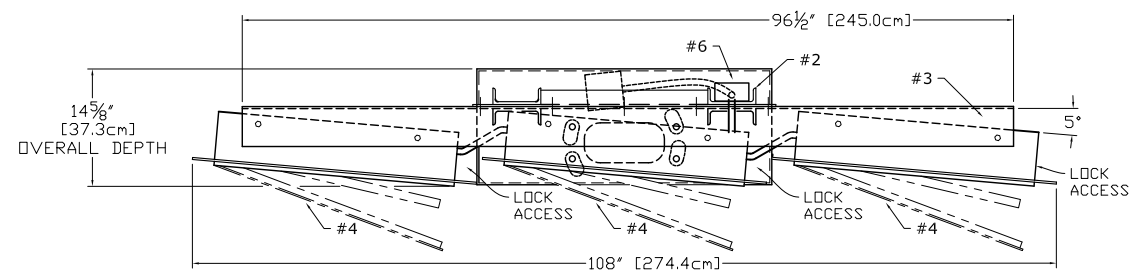
EST:	CLIENT:
SLS/PM:	LANDLORD:

THE INTENT OF THIS DRAWING IS TO SHOW A CONCEPTUAL REPRESENTATION OF THE PROPOSED SIGNAGE. DUE TO VARIATIONS IN PRINTING DEVICES AND SUBSTRATES, THE FINISHED PRODUCT MAY DIFFER SLIGHTLY FROM DRAWING.



5-PANEL MENU - FREESTANDING

Qty. 1

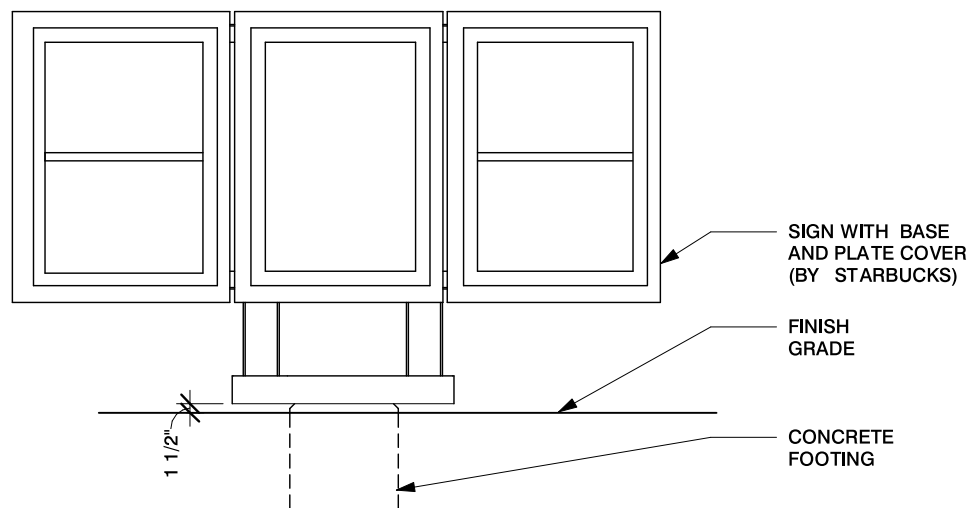


- #1 - 3/4" [19mm] STEEL BASE PLATE w/ 18deg HOLES PATTERN ROTATED FOR 15deg THRU 3deg POSITION
- #2 - C6X10.5 (6"x2"x5 1/16") STEEL POST (2x)
- #3 - 5"x3"x1/4" STEEL SUPPORT ANGLES (2x) (BOLTED TO WELDED 1/4" STEEL CROSSBARS)
- #4 - EXTRUDED ALUMINUM MENU BOARDS (3x) ONE FULL AND TWO SPLIT PANEL LIGHTBOXES ONE - 25 1/4"x38" AND FOUR 25 1/4"x18 3/8" GRAPHICS ALL GRAPHIC ASSEMBLIES SHIFTED 1/4" TO RIGHT STANDARD LED TUBE LIGHTING, SIDE LOCKS
- #5 - WELDED ALUMINUM BASE COVER
- #6 - WATER-TIGHT BOX w/SWITCH & SENSOR, RIDGID CONDUIT RUN TO SECOND EXT BOX BELOW BASE COVER, 120 WATT, 0.90Aac
- #7 - 8 BASE WASHERS, 1/4" THICK
- #8 - TWO SIDE MOUNT LOCKS per MENUBOARD RETAIN EXISTING KEY #E3-26-819-15

MESSAGE AREA = (86.25 * 38.125) / 144 = 22.9 SQ FT

DTE - MENU 5 PANEL FREESTANDING

Scale: 1/2" = 1' (11x17 paper)



DTE - MENU 5 PANEL FREESTANDING

Scale: 3/8" = 1' (11x17 paper)

HILTONDISPLAYS
 125 HILLSIDE DRIVE • GREENVILLE SC 29607
 P 800 353 9132 • F 864 242 2204
 www.hiltondisplays.com

QID 20-48974

JOB NAME

Starbucks

LOCATION

2050 NW Lowenstein Dr.
 Lee's Summit, MO 64081

CUSTOMER CONTACT

SALESMAN / PM

Maddie Keller

DESIGNER

Chad Wike

DWG. DATE

8-24-2020

REV. DATE / REVISION

SCALE

As Noted

FILE

2020/Starbucks/Lees Summit MO/20-48974/ SB Lees Summit MO 20-48974.cdr

DESIGN SPECIFICATIONS ACCEPTED BY:

EST: CLIENT:

SLS/PM: LANDLORD:

THE INTENT OF THIS DRAWING IS TO SHOW A CONCEPTUAL REPRESENTATION OF THE PROPOSED SIGNAGE. DUE TO VARIATIONS IN PRINTING DEVICES AND SUBSTRATES, THE FINISHED PRODUCT MAY DIFFER SLIGHTLY FROM DRAWING.

UL Underwriters Laboratories Inc. DRY DAMP WET