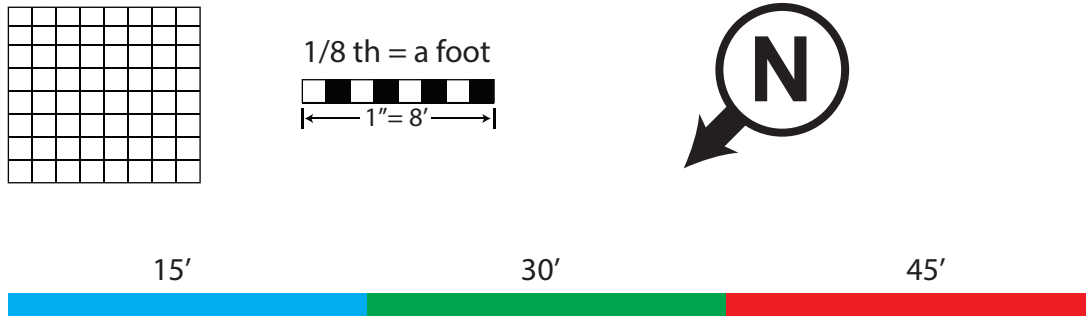


Fire Alarm Symbols NFPA-170 2013	
Item	Description
	Fire Alarm Control Panel
	Fire Alarm Annunciator
	End Of Line Resistor
	Photoelectric Smoke Detector
	Duct Detector (Return)
	Pull Station
	Alarm Horn/Strobe Ceiling Mount
	Alarm Horn/Strobe Wall Mount
	Remote Alarm Indicating And Test Switch
	Valve Supervisory Switch (Tamper)
	Flow Detector/switch
	Addressable Input Monitor Module
	Dual Addressable Input Monitor Module
	Isolation Module
	Relay Module



Addressable  
Wiring Legend

- SBUS**
- 18-4 (or larger) non-shielded, plenum rated, solid core, FPLP, copper fire alarm wire.  
{In conduit} 18ga (or larger) THHN stranded, copper wire.
- SLC**
- {Open plenum} 18-2ga (or larger) non-shielded, plenum rated, solid core, FPLP ,copper fire alarm wire.  
{In conduit} 18ga. THHN stranded, copper wire.
- NAC**
- {Open plenum} 14-2ga. (or larger) non-shielded, plenum rated, solid core, FPLP (or higher),copper fire alarm wire.  
{In conduit} 14ga (or larger) THHN stranded, copper wire.

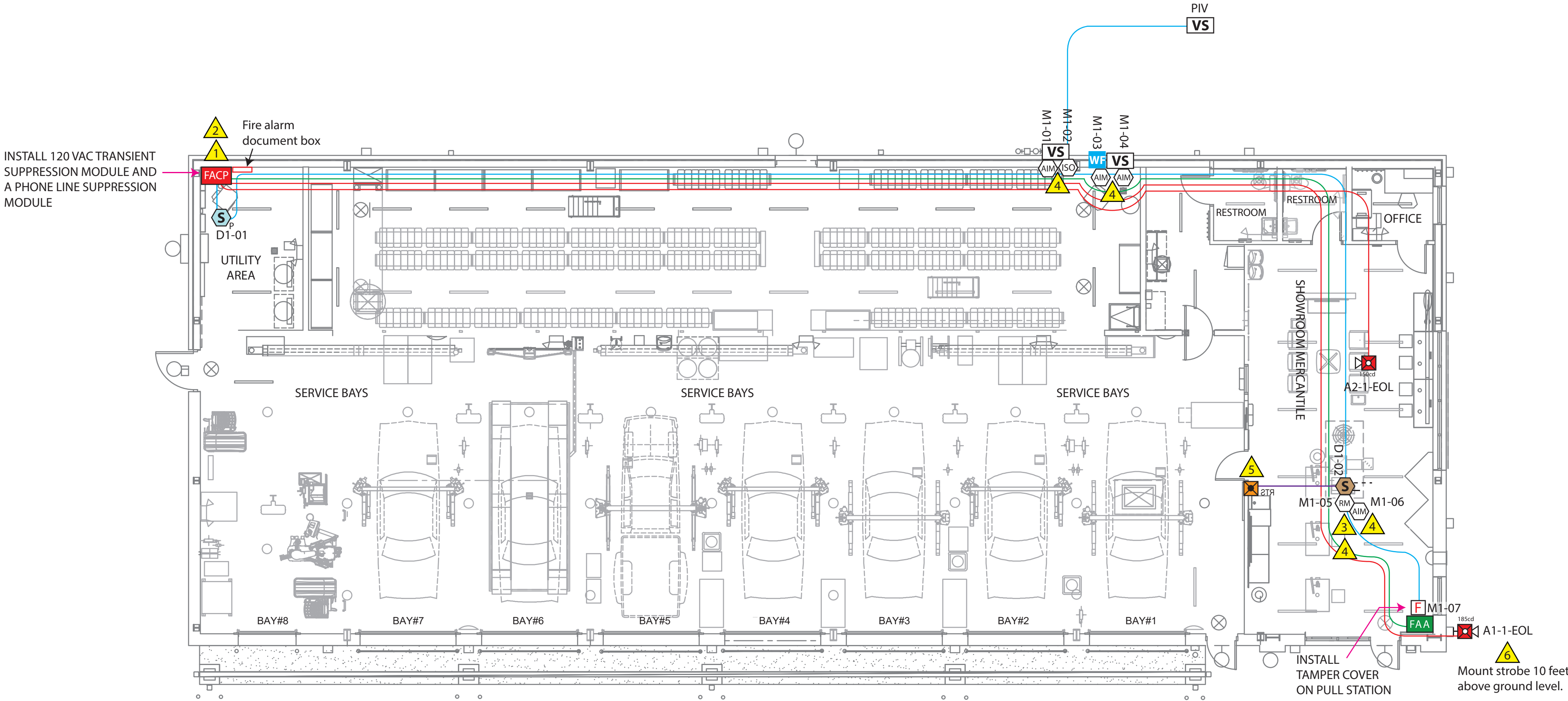
Addressable  
Device Label Keys

Notification devices A3-3  
NAC driver panel. ↑  
Driver circuit #. ↑  
Device order #. ↓

Initiating devices 1-028  
SLC loop #. ↑  
Device address#. ↓

Fire Alarm Plan Notes

1. 120vac, dedicated , 20-amp circuit. EC will provide circuit and breaker lockout.
2. Owner will provide two (2) means of signal transmission to the off-site monitoring facility. provide a dedicated phone line for the primary means of transmission. the secondary means shall utilize a voice over internet protocol / session initiation protocol (voip/sip) connection to owners network.
3. AHU Shut down.
4. Modules mount in 4"x4"x2"deep box with in 3' of detector.
5. Remote test devices are not to be installed more than 7 feet above finished floor.  
Device must be mounted on closest fixed structural surface.
6. Outside- water flow horn strobe will be tied to FACP



**Fire Alarm Solutions**  
3150 MERCIER SUITE 520  
KANSAS CITY, MO 64111  
816-753-4660

Date:	9/25/2020		
Job:	FIRESTONE		
Drawing:	1.1	Sheet	2 of 2
Scale:	1/8inch = 1foot		

Description:  
New fire alarm system

These drawings are the intellectual property and actual property of Fire Alarm Solutions and or Kennyc Industries, Inc. It is submitted in confidence and is not to be disclosed or used without our expressed written consent.

**AEC**  
ARCHITECTURAL ENGINEERING  
CONSORTIUM, INC.  
MECHANICAL • ELECTRICAL • PLUMBING  
STRUCTURAL • FIRE PROTECTION  
WWW.AECCONSORT.COM

**KANSAS OFFICE**  
11032 S Green Rd.  
Olathe, KS 66061  
913-829-3803  
f: 913-829-6352

**MISSOURI OFFICE**  
752 Bagwell Dam Blvd.  
Lake Ozark, MO 65049  
573-365-2100  
f: 573-365-2102

Architectural Engineering Consortium, Inc. (AEC) assumes design responsibility for this project for only the fire alarm discipline with drawing sheet numbers containing FA. All other drawings should be considered the work of others. Further, drawings in this project set may contain drawing information, including but not limited to: architectural plans, sections and elevations, site plans and surveys and other information pertinent to showing the fire alarm work which is furnished by others, generally indicated by screened or light type. AEC assumes no responsibility or liability for the accuracy or regulatory compliance for work prepared by others even though shown on FA drawings. AEC assumes responsibility only for the design of fire alarm discipline contained herein, generally indicated in bold type.

09/28/2020

**Firestone**  
since 1926 **COMPLETE AUTO CARE™**  
3501 Sw Market St  
Lee's Summit, Missouri 64082

FIRE ALARM PLAN  
FIRST FLOOR

FA 1.1