

1

2

3

4

5

6

7

8

DOWNTOWN LEE'S SUMMIT APARTMENTS

PUBLIC SANITARY SEWER IMPROVEMENTS

CITY OF LEE'S SUMMIT, MO

JACKSON COUNTY

HDR

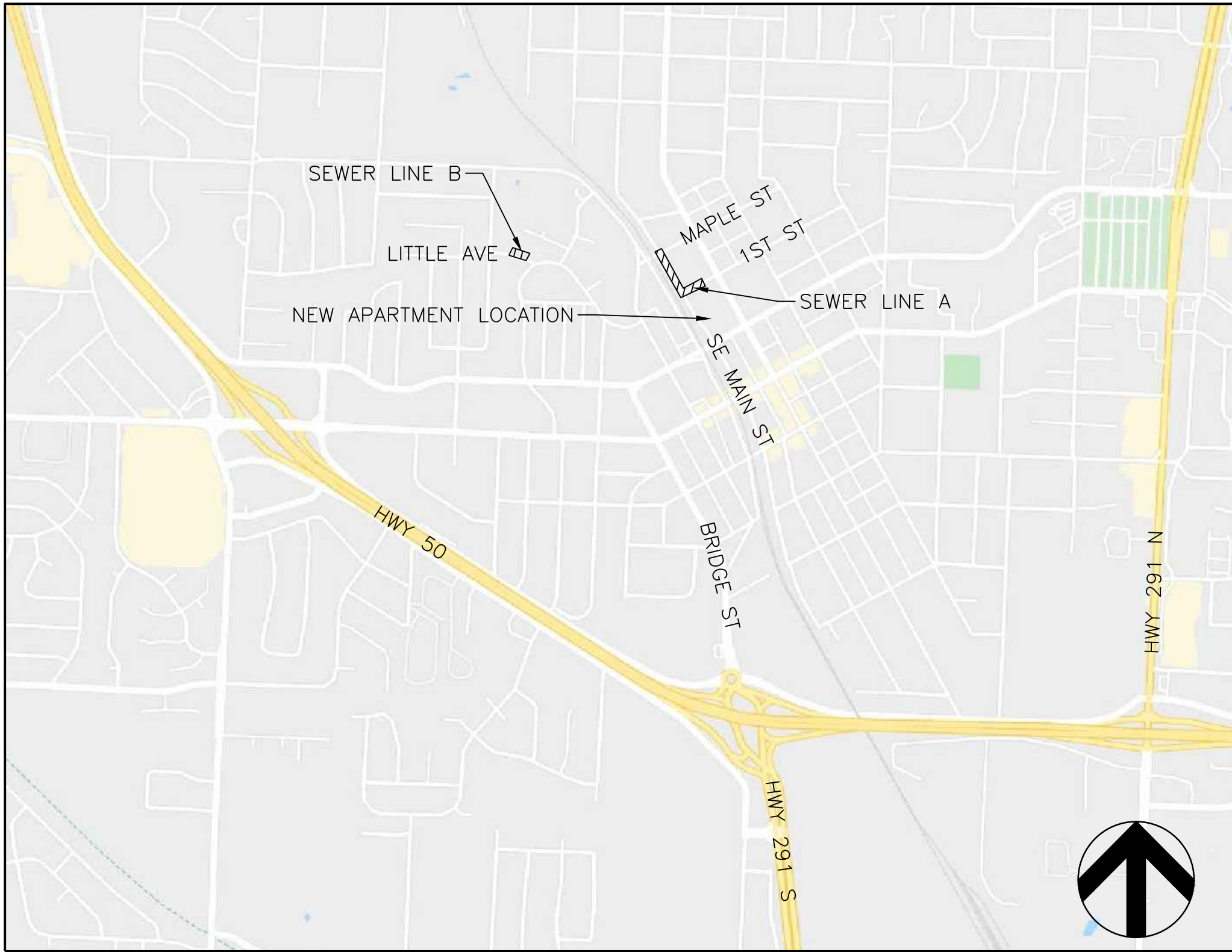
HDR Engineering, Inc.

MO. STATE CERTIFICATE OF
AUTHORITY #000856

10450 HOLMES ROAD, SUITE 600
KANSAS CITY, MO 64131
PH: 816-360-2700
FX: 816-360-2777

INDEX OF DRAWINGS

- 01 COVER SHEET
- 02 PUBLIC SEWER LINE A – PLAN & PROFILE
- 03 PUBLIC SEWER LINE B – PLAN & PROFILE
- 04 MISCELLANEOUS DETAILS
- 05 MISCELLANEOUS DETAILS
- 06 MISCELLANEOUS DETAILS



SITE LOCATION MAP
N.T.S.

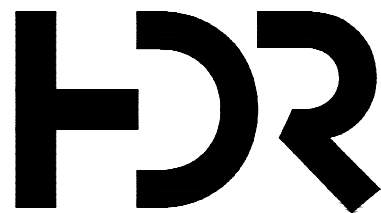
UTILITIES

ELECTRIC – KCP&L	816-471-5275
TELEPHONE – AT&T	816-325-5607
GAS – SPIRE	816-756-5252
CABLE – CHARTER SPECTRUM	816-358-8833
WATER – LEE'S SUMMIT WATER UTILITIES	816-969-1900
SEWER – LEE'S SUMMIT PUBLIC WORKS	816-969-1800



UTILITY NOTES:
VISUAL INDICATIONS OF UTILITIES ARE AS SHOWN. UNDERGROUND LOCATIONS SHOWN, AS FURNISHED BY THEIR LESSORS, ARE APPROXIMATE AND SHOULD BE VERIFIED IN THE FIELD AT THE TIME OF CONSTRUCTION. FOR ACTUAL FIELD LOCATIONS OF UNDERGROUND UTILITIES IN MISSOURI, CALL 811, or 1-800-344-7483. BE IT NOTED THAT ONLY PART OF THE UNDERGROUND TELEPHONE LINES WERE MARKED FOR THE SITE SURVEY AND THESE PLANS AS EVIDENCED BY TELEPHONE PEDESTALS WITHOUT CORRESPONDING UNDERGROUND CABLE. THE CONTRACTOR IS RESPONSIBLE TO LOCATE AND PROTECT THESE LINES THE SAME AS IF THEY HAD BEEN LOCATED AND SHOWN ON THESE PLANS.

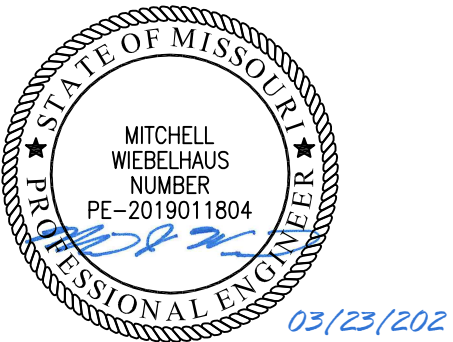
RELEASE FOR
CONSTRUCTION
AS NOTED ON PLANS REVIEW
DEVELOPMENT SERVICES
LEE'S SUMMIT, MISSOURI
06/08/2020



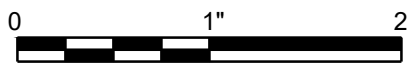
HDR
MISSOURI CERTIFICATE OF
AUTHORITY #: 000856
10450 HOLMES ROAD, SUITE 600
KANSAS CITY, MO 64131
816-360-2700

2	03-23-20	CITY RESUBMITTAL
1	12-31-19	CITY REVIEW
ISSUE	DATE	DESCRIPTION

PROJECT MANAGER	
CIVIL	M. WIEBELHAUS
PROJECT NUMBER	10186909



DOWNTOWN LEE'S SUMMIT APARTMENTS
PUBLIC SANITARY SEWER IMPROVEMENTS
114 S.E. DOUGLAS STREET
LEE'S SUMMIT, MISSOURI



COVER SHEET

FILENAME | 10186909-Cover.dwg
SCALE | AS NOTED

SHEET
01



HORZ. SCALE: 1"=30'
VERT. SCALE: 1"=10'

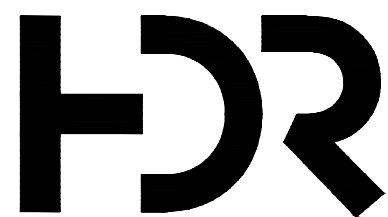
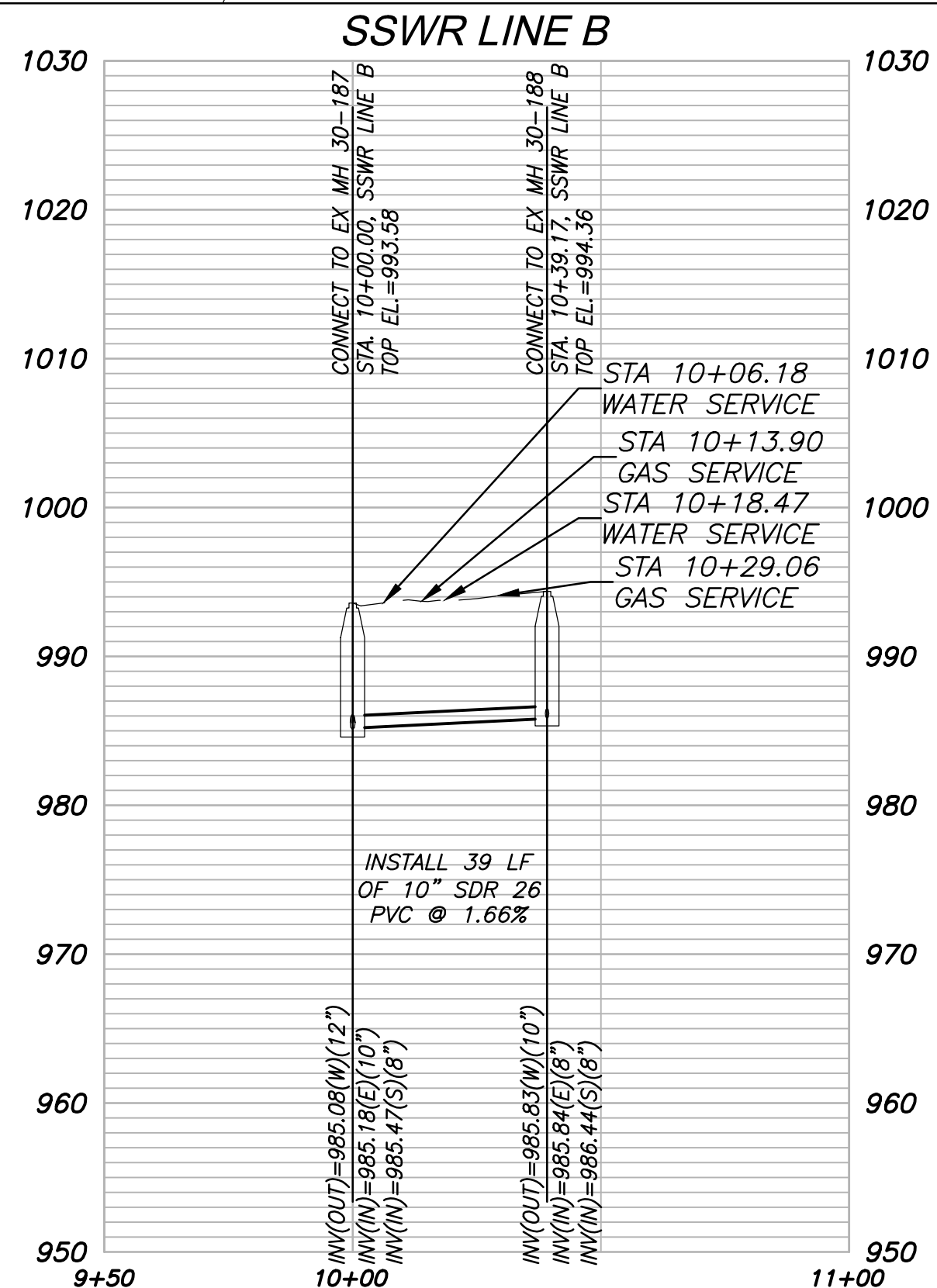
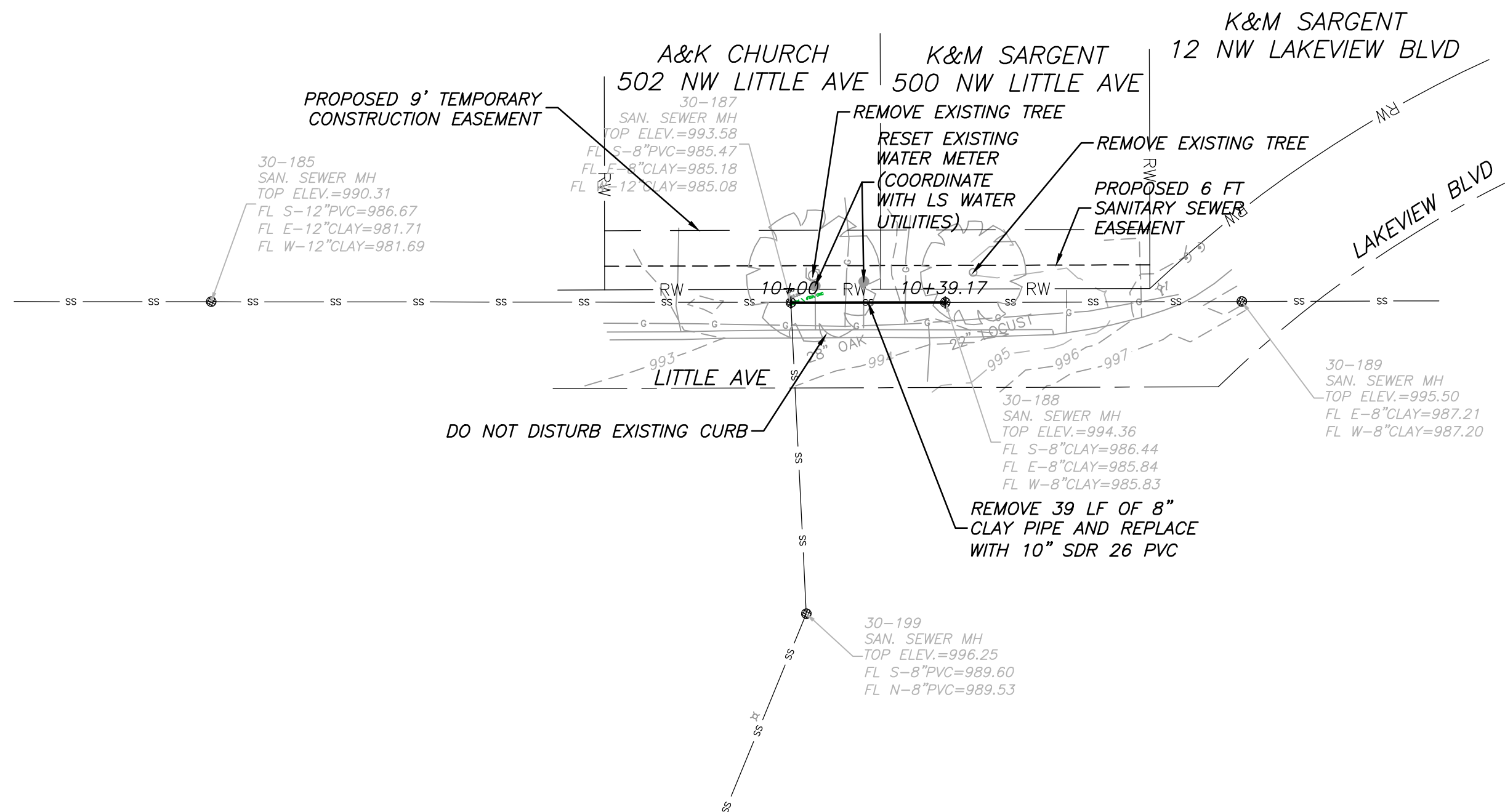
GENERAL NOTES:

1. THE CONSTRUCTION COVERED BY THESE PLANS SHALL CONFORM TO ALL APPLICABLE STANDARDS AND SPECIFICATIONS OF THE PUBLIC WORKS DEPARTMENT OF THE CITY OF LEE'S SUMMIT, THE KANSAS CITY METROPOLITAN CHAPTER OF THE AMERICAN PUBLIC WORKS ASSOCIATION (APWA), AND THE MISSOURI DEPARTMENT OF NATURAL RESOURCES (MDNR).
2. ALL WORKMANSHIP AND MATERIALS SHALL BE SUBJECT TO THE INSPECTION AND APPROVAL OF THE CITY OF LEE'S SUMMIT, MISSOURI.
3. THE UTILITY LOCATIONS SHOWN ON THESE DRAWINGS WERE DEVELOPED FROM INFORMATION AVAILABLE, IT IS THE CONTRACTORS RESPONSIBILITY TO VERIFY THE LOCATION OF ALL UTILITIES (WHETHER SHOWN OR NOT) AND PROTECT SAID UTILITIES FROM ANY DAMAGE.
4. THE CONTRACTOR SHALL ADHERE TO THE PROVISIONS OF THE STATE BILL NUMBER 583, 78TH GENERAL ASSEMBLY OF THE STATE OF MISSOURI. THE BILL REQUIRES THAT ANY PERSON OR FIRM DOING EXCAVATION ON PUBLIC RIGHT-OF-WAY DO SO ONLY AFTER GIVING NOTICE TO, AND OBTAINING INFORMATION FROM, UTILITY COMPANIES. STATE LAW REQUIRES 48 HOURS ADVANCE NOTICE.

THE CONTRACTOR MAY ALSO UTILIZE THE FOLLOWING TOLL FREE PHONE NUMBER PROVIDED BY "MISSOURI ONE CALL SYSTEM, INC.": 811. THIS PHONE NUMBER IS APPLICABLE ANYWHERE WITHIN THE STATE OF MISSOURI.

PRIOR TO COMMENCEMENT OF WORK, THE CONTRACTOR SHALL NOTIFY ALL THOSE COMPANIES WHICH HAVE FACILITIES IN THE NEAR VICINITY OF THE CONSTRUCTION TO BE PERFORMED.

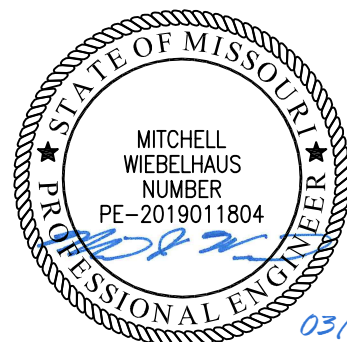
5. IT SHALL BE THE RESPONSIBILITY OF THE CONTRACTOR TO PROTECT THE ADJACENT AND DOWNSTREAM PROPERTY OWNERS FROM STORM WATER, SILT AND EROSION DURING ALL PHASES OF CONSTRUCTION, AND SHALL KEEP THE STREETS CLEAN OF MUD AND DEBRIS.
6. LOCAL ACCESS TO ALL PROPERTIES SHALL BE MAINTAINED AT ALL TIMES.
7. CONTRACTOR SHALL BE RESPONSIBLE FOR SUPPORTING ANY WATER MAINS OR GAS MAINS HORIZONTALLY AND VERTICALLY WHEN CROSSING UNDER THE EXISTING MAIN(S). IF APPLICABLE THE CONTRACTOR WILL BE RESPONSIBLE FOR SUPPORTING ANY WATER MAIN OR GAS MAIN LATERALLY, WHILE WORKING ALONGSIDE ANY MAIN(S).
8. CONTRACTOR MUST COORDINATE THE BRACING OF ALL UTILITY POLES PRIOR TO ANY EXCAVATION WITHIN 10 FEET OF A POLE.
9. ALL UTILITY AND SANITARY SERVICE LINES SHALL BE KEPT IN SERVICE AND PROTECTED DURING CONSTRUCTION OPERATIONS. IT SHALL BE THE CONTRACTOR'S RESPONSIBILITY TO LOCATE ALL EXISTING SERVICE LINES, AND NOTIFY THE CITY'S REPRESENTATIVE OF ANY CONFLICTS IMMEDIATELY. THE CONTRACTOR SHALL BE HELD RESPONSIBLE FOR CONTACTING ALL UTILITY COMPANIES FOR FIELD LOCATION OF ALL UNDERGROUND UTILITY LINES PRIOR TO ANY EXCAVATION. UTILITIES DAMAGED THROUGH THE NEGLIGENCE OF THE CONTRACTOR SHALL BE REPAIRED AT THE CONTRACTOR'S EXPENSE.



HDR
MISSOURI CERTIFICATE OF
AUTHORITY #: 000856
10450 HOLMES ROAD, SUITE 600
KANSAS CITY, MO 64131
816-360-2700

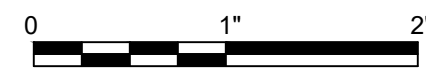
ISSUE	DATE	DESCRIPTION
2	03-23-20	CITY RESUBMITTAL
1	12-31-19	CITY REVIEW

PROJECT MANAGER	
CIVIL	M. WIEBELHAUS
PROJECT NUMBER	
10186909	



**DOWNTOWN LEE'S SUMMIT APARTMENTS
PUBLIC SANITARY SEWER IMPROVEMENTS
114 S.E. DOUGLAS STREET
LEE'S SUMMIT, MISSOURI**

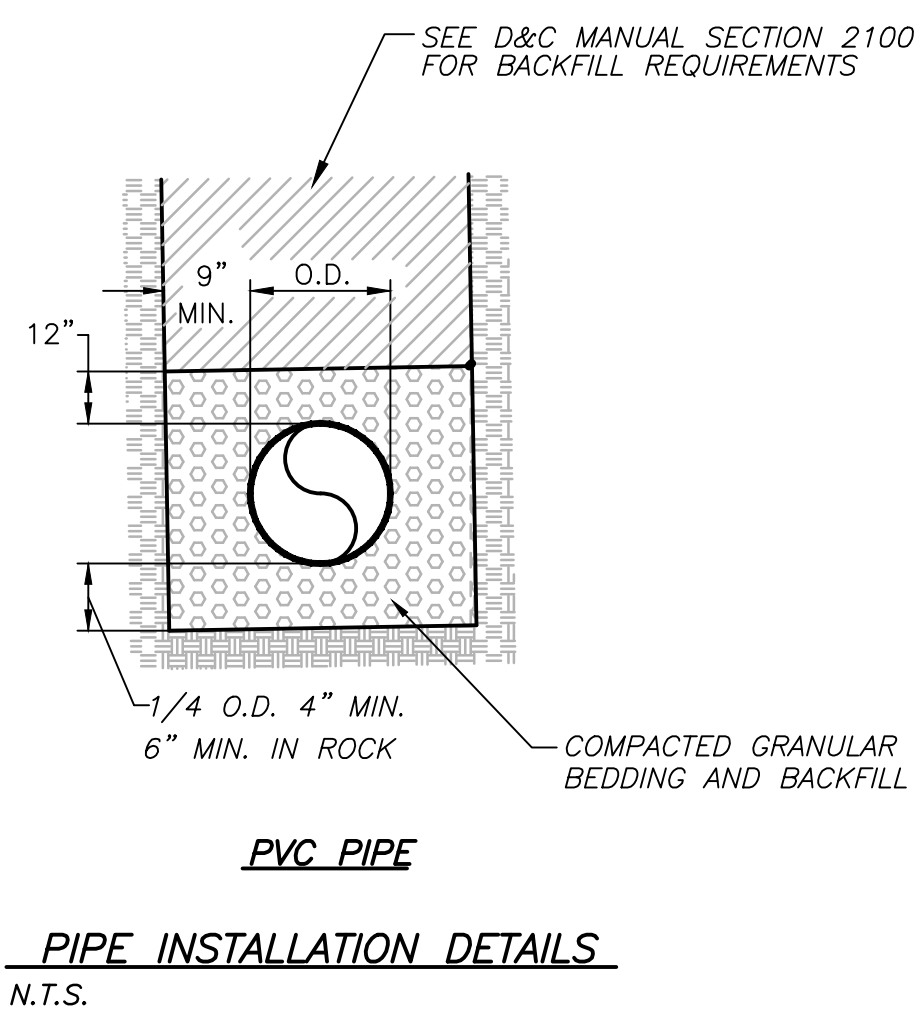
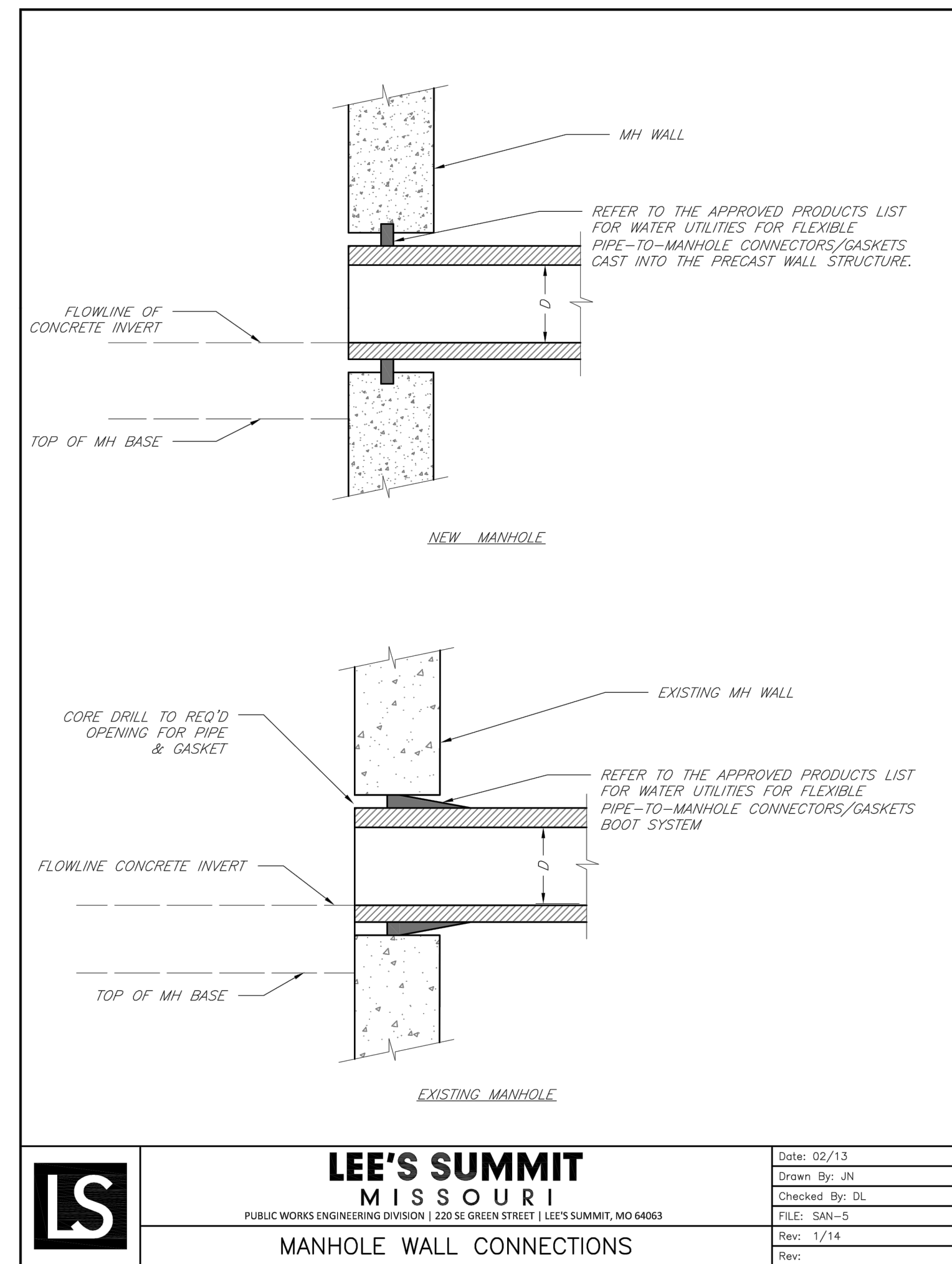
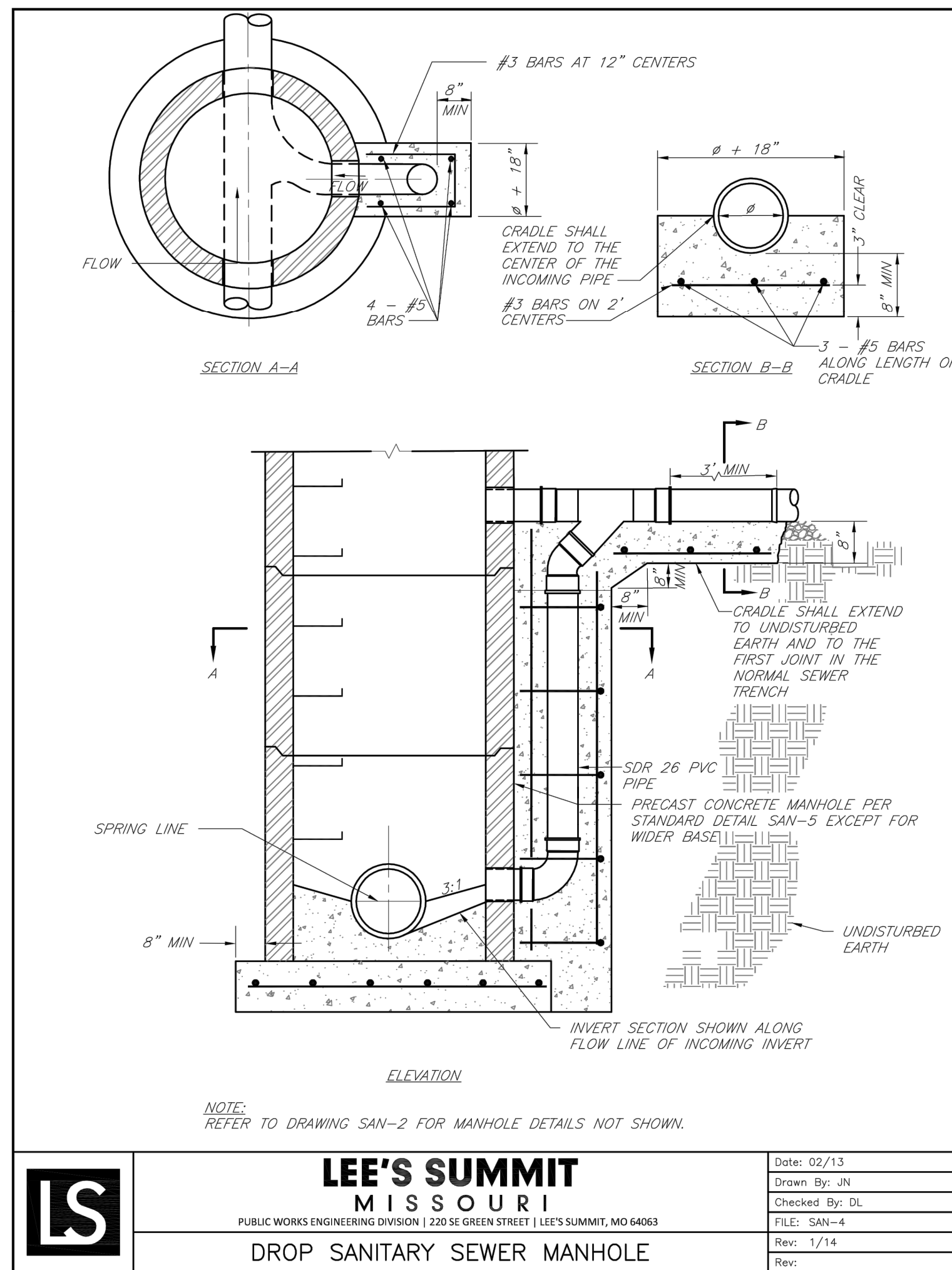
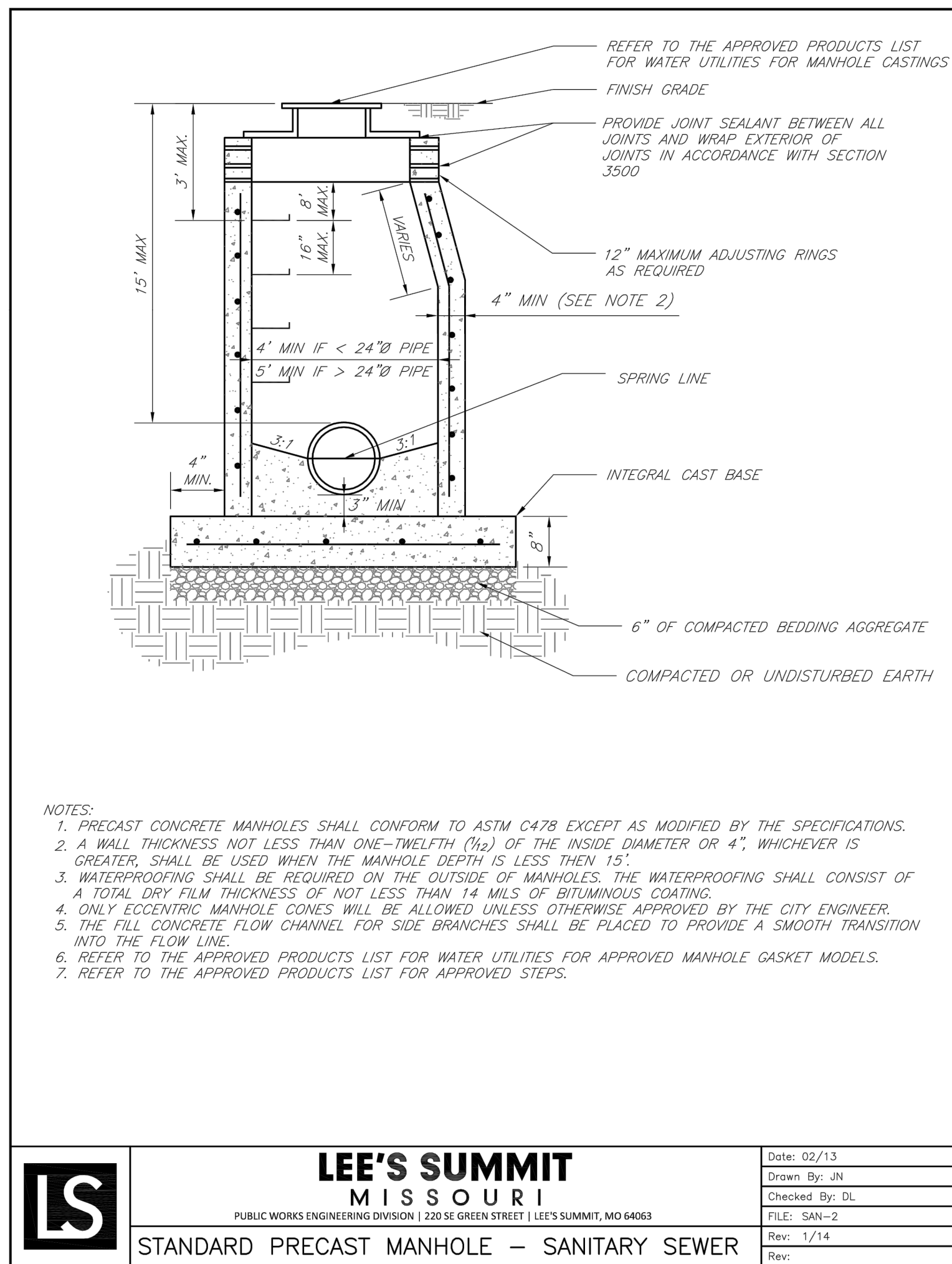
**PUBLIC SEWER LINE B
PLAN & PROFILE**



FILENAME | 01C-BP02-30.dwg
SCALE | AS NOTED

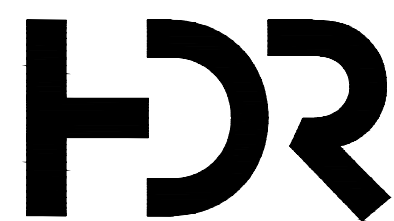
SHEET

03



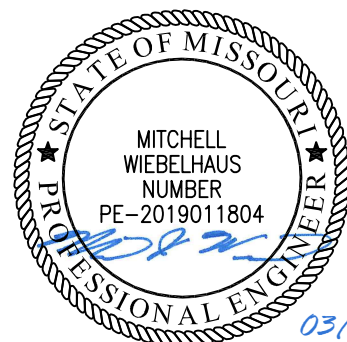
RELEASE FOR
CONSTRUCTION
AS NOTED ON PLANS REVIEW
DEVELOPMENT SERVICES
LEE'S SUMMIT, MISSOURI

06/08/2020



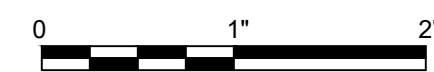
HDR
MISSOURI CERTIFICATE OF
AUTHORITY #: 000856
10450 HOLMES ROAD, SUITE 600
KANSAS CITY, MO 64131
816-360-2700

PROJECT MANAGER			CIVIL		M. WIEBELHAUS	
2	03-23-20	CITY RESUBMITTAL				
1	12-31-19	CITY REVIEW				
ISSUE	DATE	DESCRIPTION	PROJECT NUMBER		10186909	



DOWNTOWN LEE'S SUMMIT APARTMENTS
PUBLIC SANITARY SEWER IMPROVEMENTS
114 S.E. DOUGLAS STREET
LEE'S SUMMIT, MISSOURI

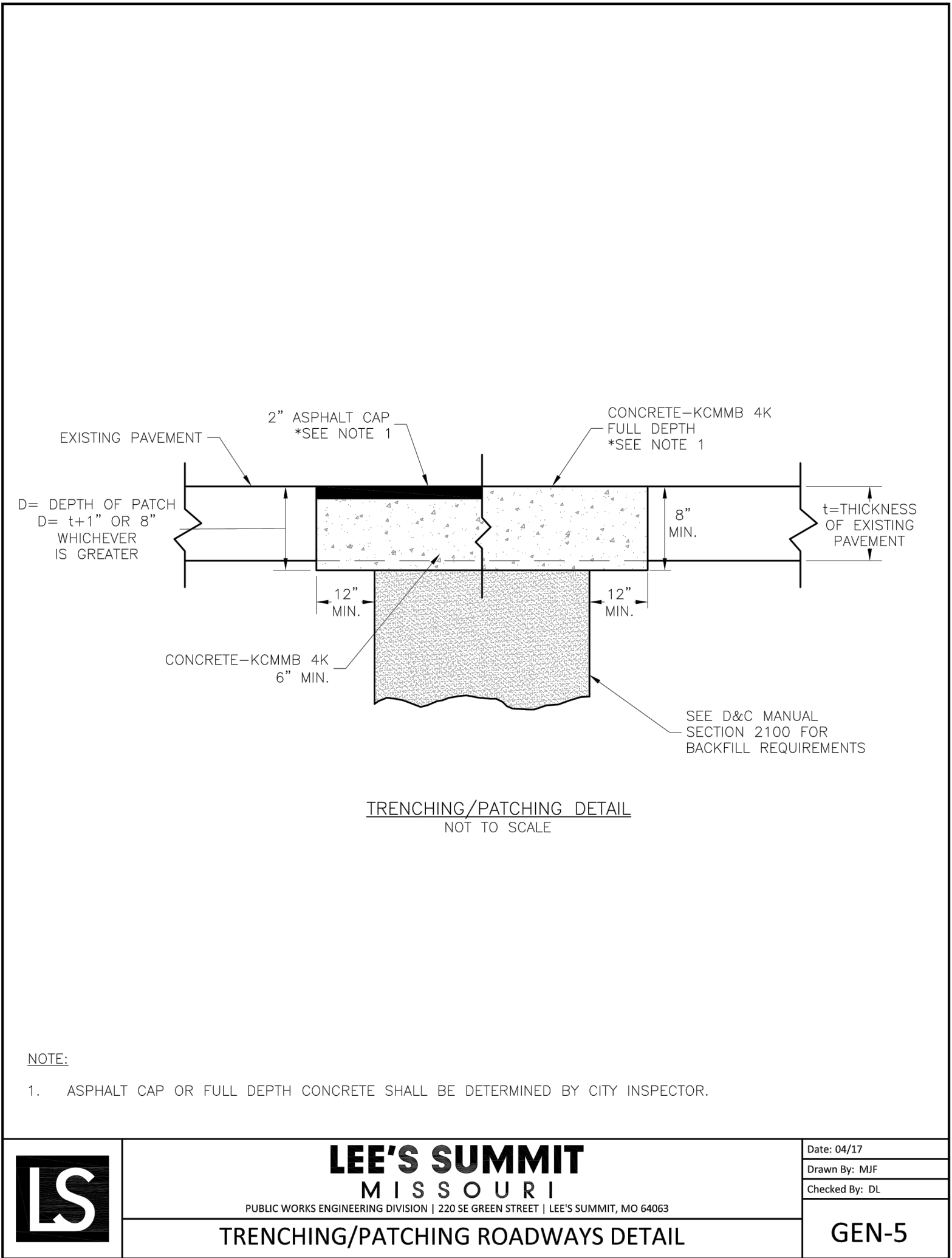
MISCELLANEOUS DETAILS

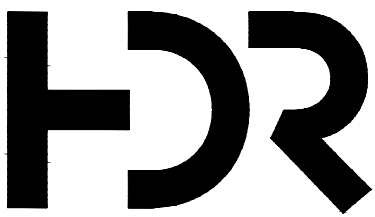


FILENAME | 01C-BP02-30.dwg
SCALE | AS NOTED

SHEET

04

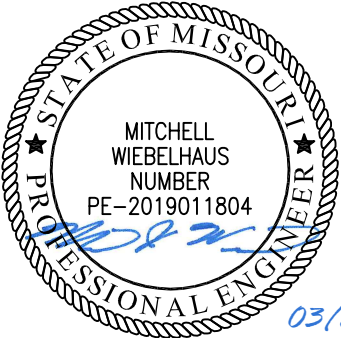




HDR
MISSOURI CERTIFICATE OF
AUTHORITY #: 000856
10450 HOLMES ROAD, SUITE 600
KANSAS CITY, MO 64131
816-360-2700

ISSUE	DATE	DESCRIPTION
2	03-23-20	CITY RESUBMITTAL
1	12-31-19	CITY REVIEW

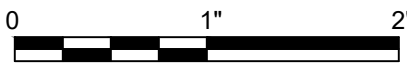
PROJECT MANAGER	
CIVIL	M. WIEBELHAUS
PROJECT NUMBER	
10186909	



03/23/202

**DOWNTOWN LEE'S SUMMIT APARTMENTS
PUBLIC SANITARY SEWER IMPROVEMENTS
114 S.E. DOUGLAS STREET
LEE'S SUMMIT, MISSOURI**

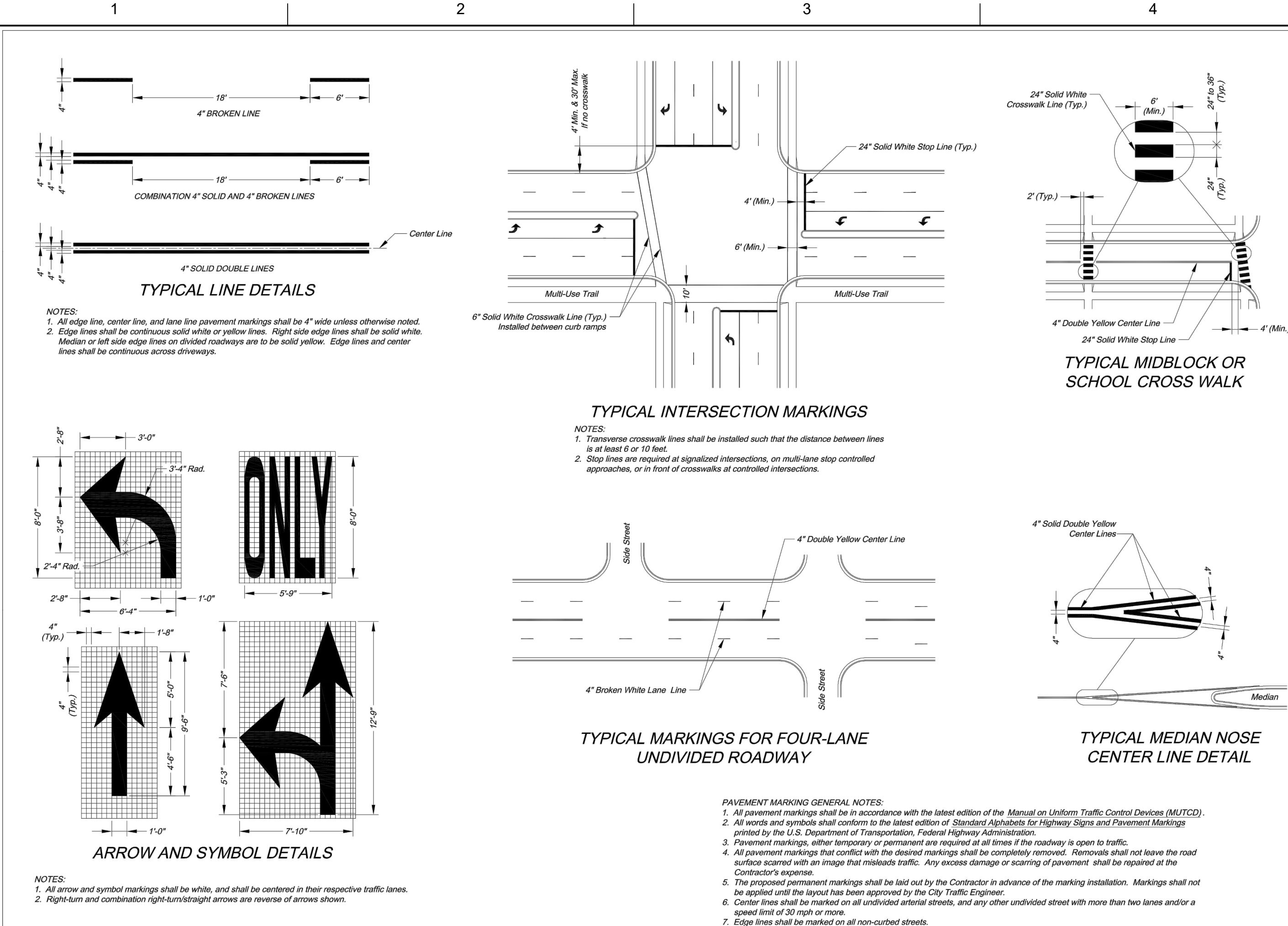
MISCELLANEOUS DETAILS



FILENAME | 01C-BP02-30.dwg
SCALE | AS NOTED

SHEET
06

RELEASE FOR
CONSTRUCTION
AS NOTED ON PLANS REVIEW
DEVELOPMENT SERVICES
LEE'S SUMMIT, MISSOURI
06/08/2020



CITY OF LEE'S SUMMIT
PUBLIC WORKS DEPARTMENT
ENGINEERING DIVISION
220 SE GREEN STREET
LEE'S SUMMIT, MO 64083
PHONE: (816) 868-1800 FAX: (816) 868-1809

ROADWAY MARKING DETAILS
STANDARD DRAWING PW-1

Drawn By: AS
Checked By: JW
Date: 03/09/2009
Project#

1 OF 2
1

