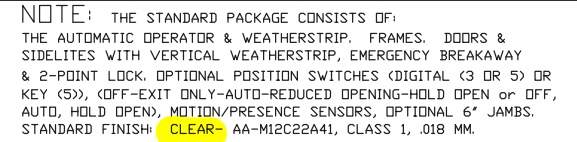


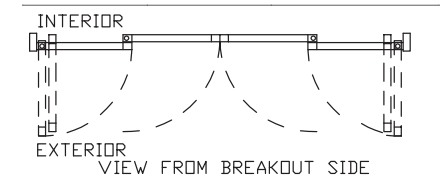
ASSA ABLOY

BESAM SL500

OVERHEAD CONCEALED FULL BREAKOUT
NARROW STILE BI-PART SLIDING DOOR SYSTEM



THIS PACKAGE WILL ACCEPT UP TO 1"(25.4) INSULATED GLASS
IN THE SIDELITES AND ACTIVE LEAVES. PLEASE INDICATE IF SO
DESIRED.



DH PACE
Everything Doors Since 1926
www.dhpace.com

DH Pace Company, Inc. - 1901 E. 119th Street - Olathe, KS 66061
Who is DH Pace Company?: [Click Here](#)

10/01/2020

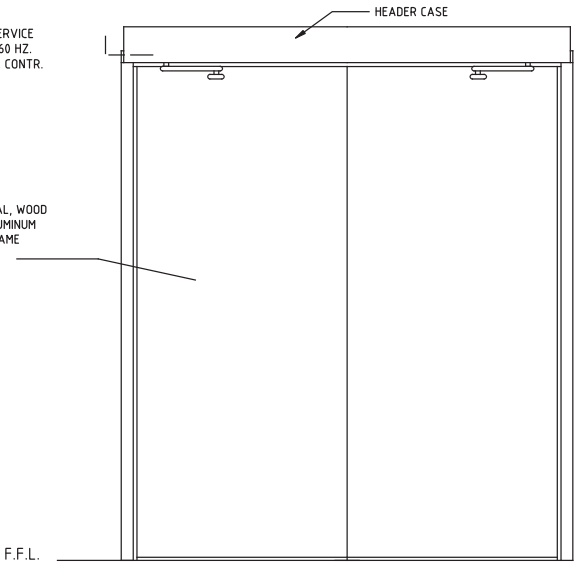
ASSA ABLOY

ASSA ABLOY Entrance Systems
1900 Airport Road
Monroe, NC 28110
Phone: 1-866-237-2687
specdesk.na.entrance@assaabloy.com

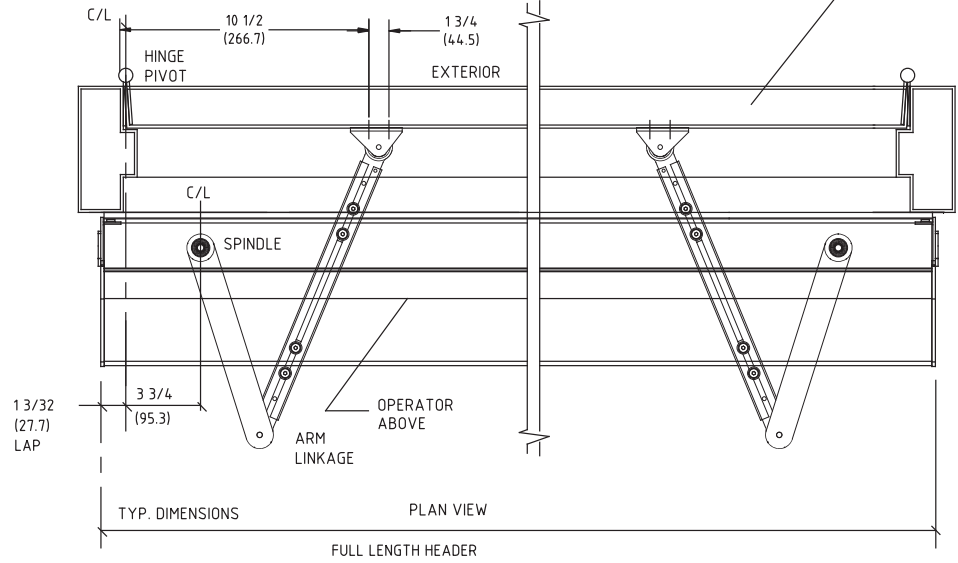
ASSA ABLOY SW200i
SURFACE APPLIED DUAL
SWING DOOR OPERATOR
" PUSH APPLICATION "

* ELECTRICAL SERVICE
120 VAC, 50/60 HZ.
10A. BY ELEC. CONTR.

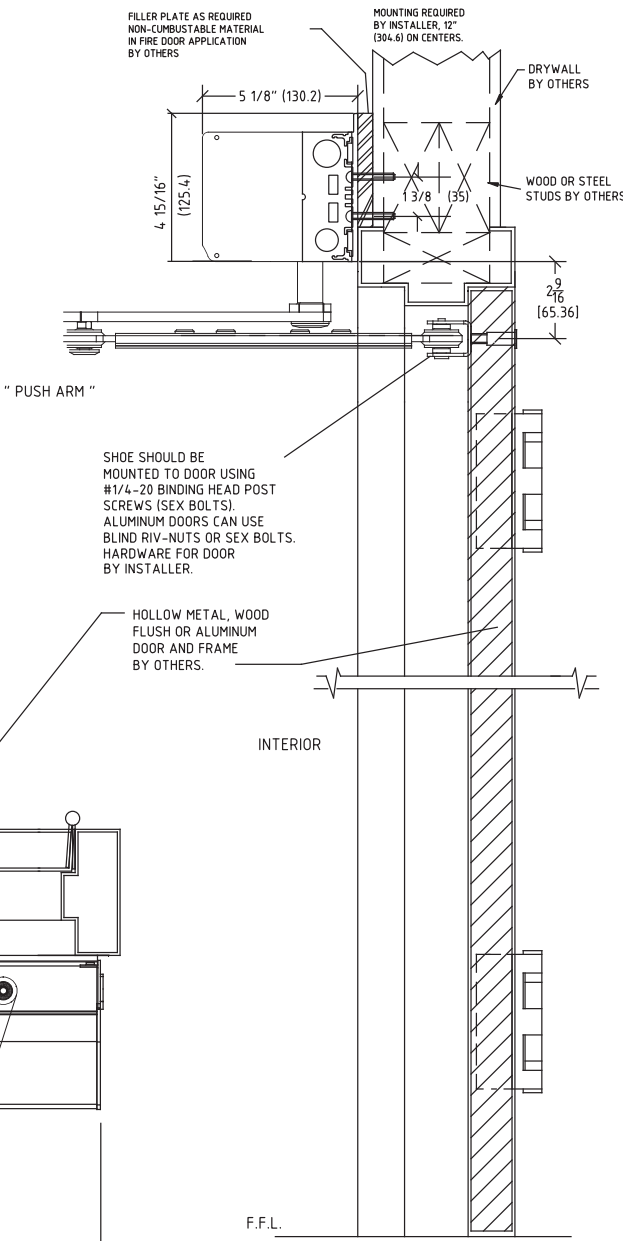
HOLLOW METAL, WOOD
FLUSH OR ALUMINUM
DOOR AND FRAME
BY OTHERS.



INTERIOR ELEVATION



FULL LENGTH HEADER



NOTE:
SW200i is DESIGNED FOR HIGH PERFORMANCE, HEAVY
USAGE PEDESTRIAN APPLICATIONS THAT COMPLY WITH
ANSI A156.10. THE OPERATOR CAN ALSO BE ADJUSTED
FOR LOWER MANUAL PUSH FORCES TO COMPLY WITH
ANSI 156.19 AND FIRE DOOR REGULATIONS.

STANDARD FINISH:
CLEAR - AA-C23-A31.



CM-330/N

Jimmy Jones, AAADM, Fire Check Certified
Sales
DH Pace Entry Door Systems Group

Office: (816) 221-0072
Mobile: (816) 918-8499
Email: Jimmy.Jones@dhpace.com

DHPACE
Everything Doors Since 1926
www.dhpace.com

DH Pace Company, Inc. - 1901 E. 119th Street - Olathe, KS 66061
Who is DH Pace Company?: [Click Here](#)

**RELEASE FOR
CONSTRUCTION
AS NOTED ON PLANS REVIEW
DEVELOPMENT SERVICES
LEE'S SUMMIT, MISSOURI**

10/01/2020

81"

35"

120"

USE EXISTING 8' TALL DOORS

Stairwell Elevations
Outside Looking In'
Qty: 2 Each

72"

**RELEASE FOR
CONSTRUCTION**
AS NOTED ON PLANS REVIEW
DEVELOPMENT SERVICES
LEE'S SUMMIT, MISSOURI

10/01/2020

A
L
U
M

P
O
S
T

A
L
U
M

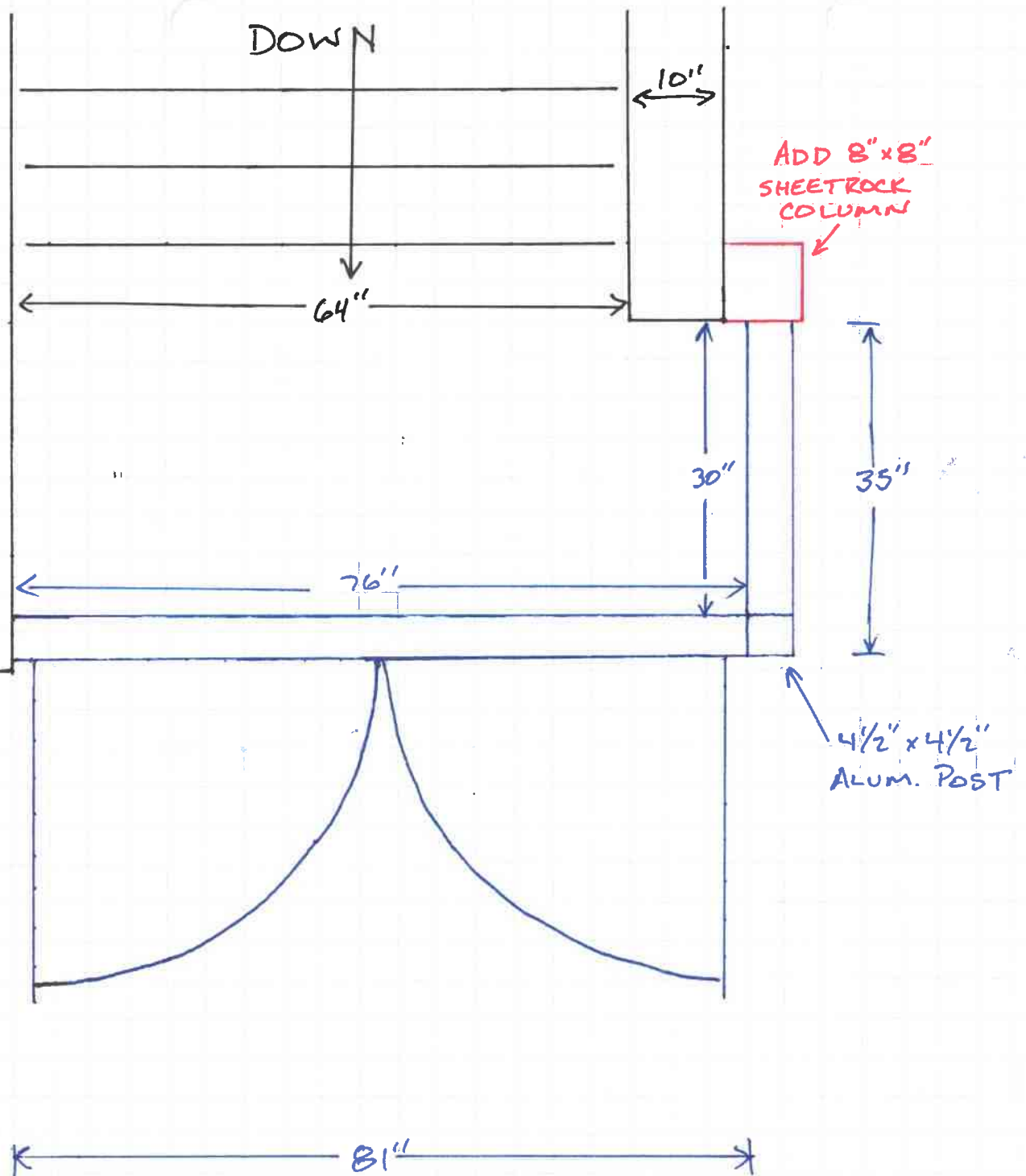
P
O
S
T

236700 KCON-THESIS

Stairwell Floor Plan
Mirrored Layouts
Qty:2

RELEASE FOR
CONSTRUCTION
AS NOTED ON PLANS REVIEW
DEVELOPMENT SERVICES
LEE'S SUMMIT, MISSOURI

10/01/2020





Touchless Wave Plate



CM-330/41WS



ASSA ABLOY SW200i™

Mode Of Operation: Each door of the vestibule will open via waving your hand in front of the wave plate. The exterior wave plate for example will open the exterior door first, then open the interior door in the programed sequence (about 3 seconds later). There will also be a wave plate inside the vestibule for entrapment.

RELEASE FOR
CONSTRUCTION
AS NOTED ON PLANS REVIEW
DEVELOPMENT SERVICES
LEE'S SUMMIT, MISSOURI

10/01/2020

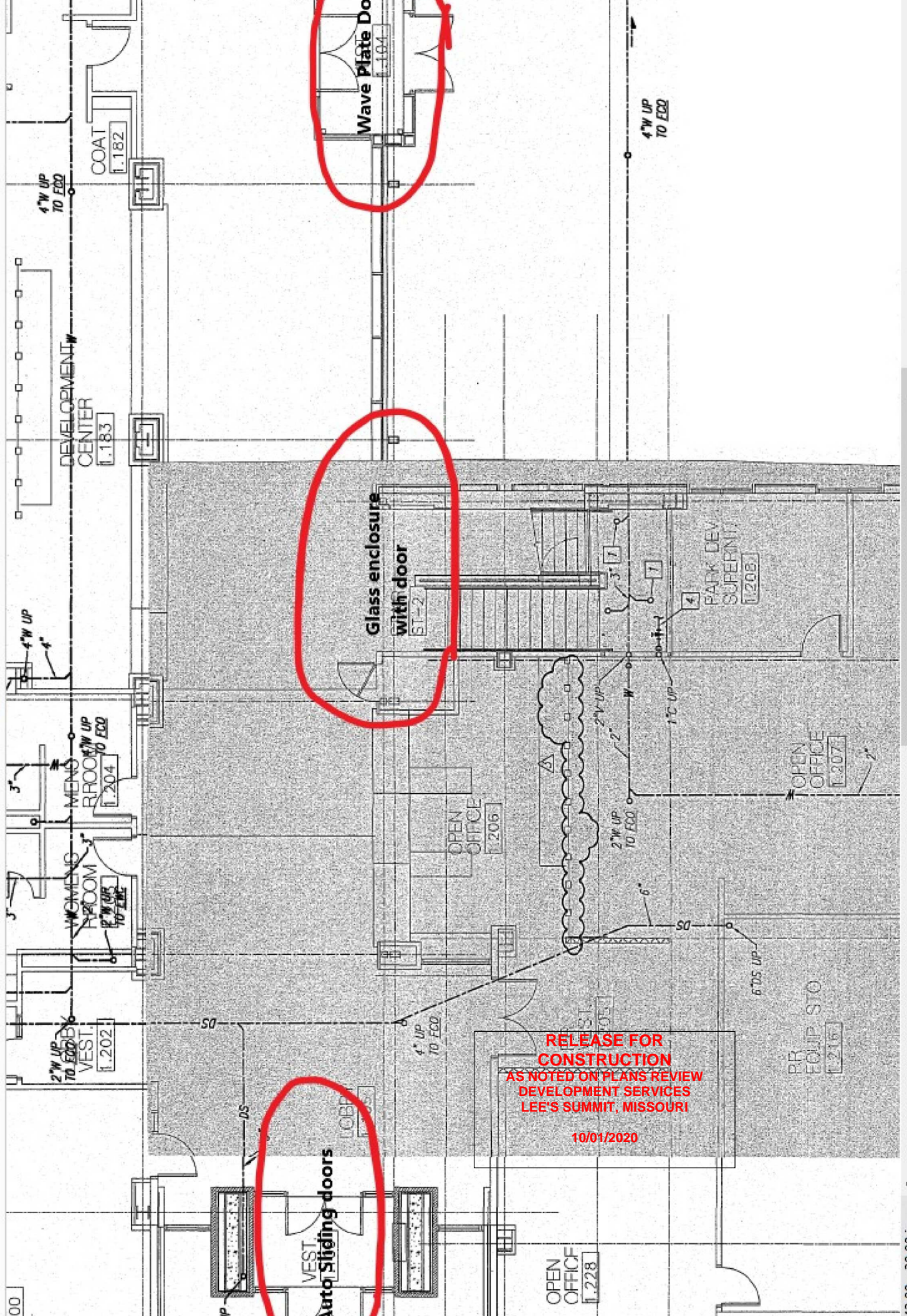
Sliding Doors

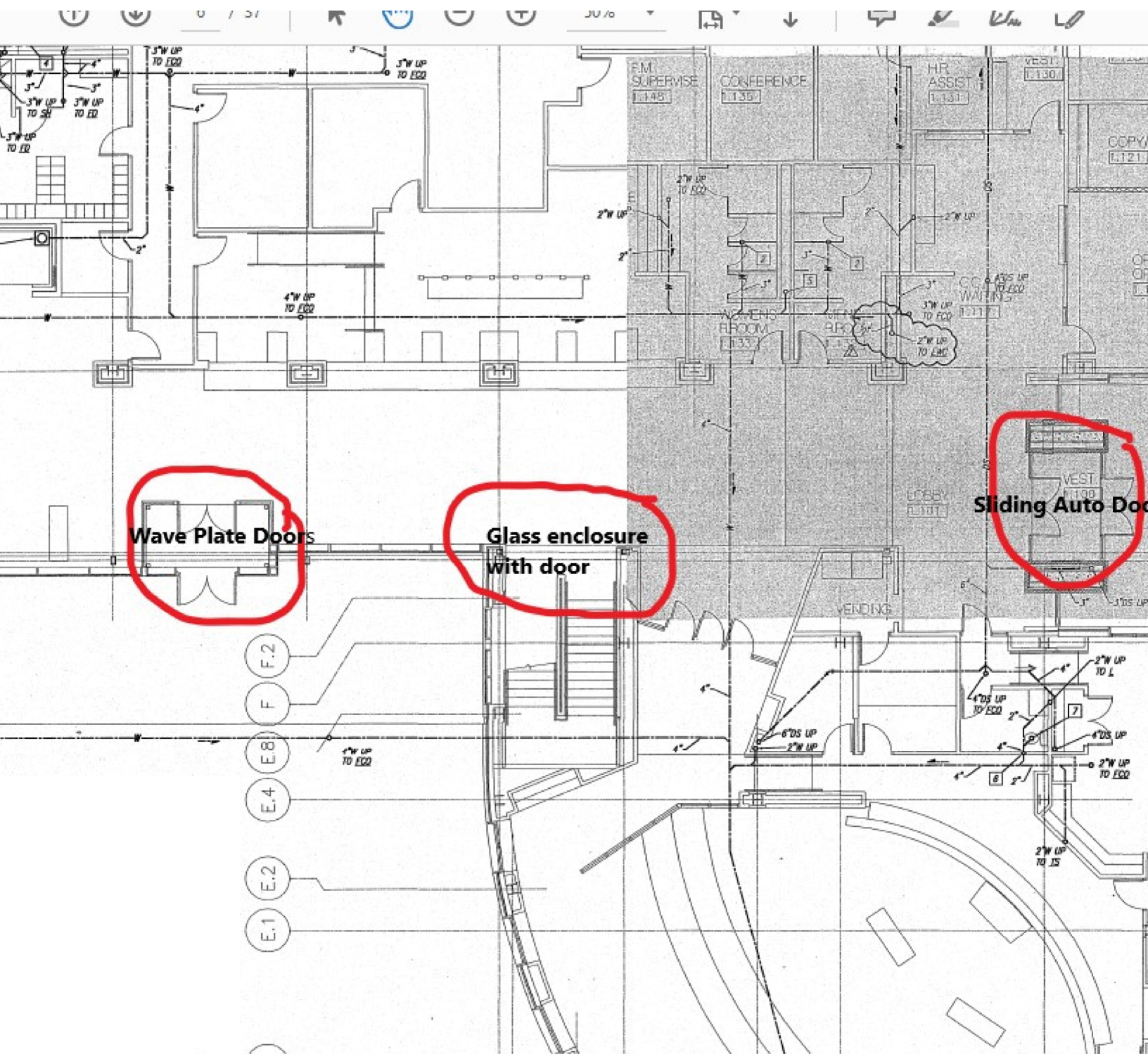


North and South Entrances: Will replace the swinging doors with Besam SL500 sliding doors. The doors will be designed to be full breakout (all four panels open out to create a big opening if needed). The doors will open by sensor from both directions of travel.

**RELEASE FOR
CONSTRUCTION
AS NOTED ON PLANS REVIEW
DEVELOPMENT SERVICES
LEE'S SUMMIT, MISSOURI**

10/01/2020





**RELEASE FOR
CONSTRUCTION
AS NOTED ON PLANS REVIEW
DEVELOPMENT SERVICES
LEE'S SUMMIT, MISSOURI**

10/01/2020