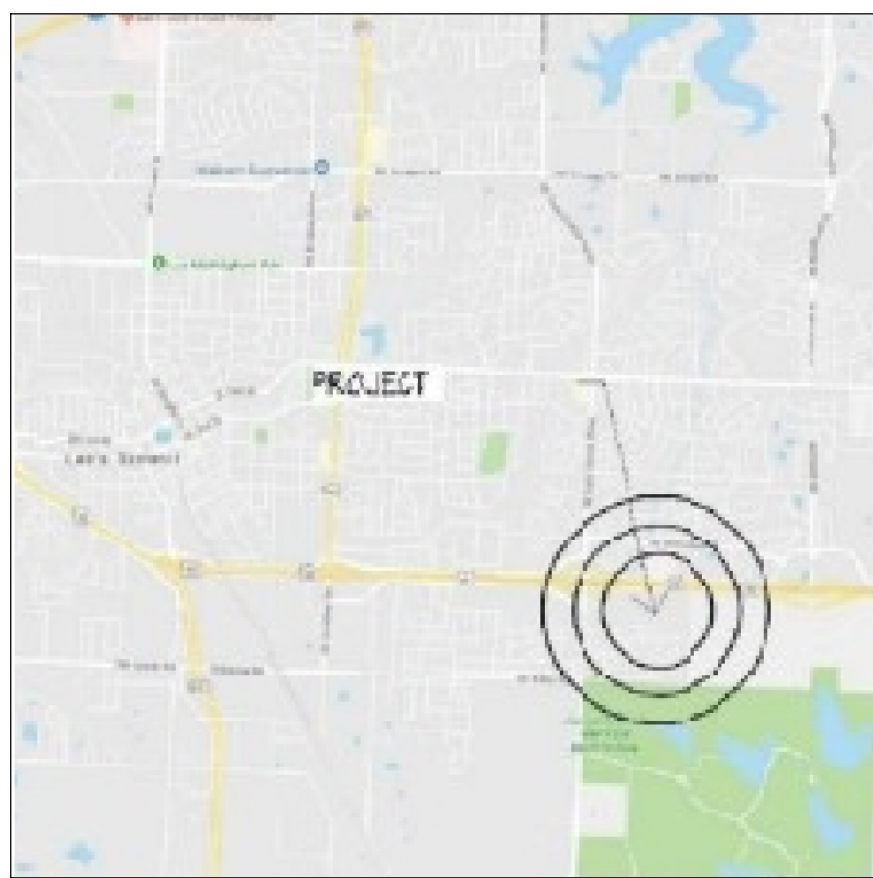


# The Princeton Lee's Summit Retirement Community

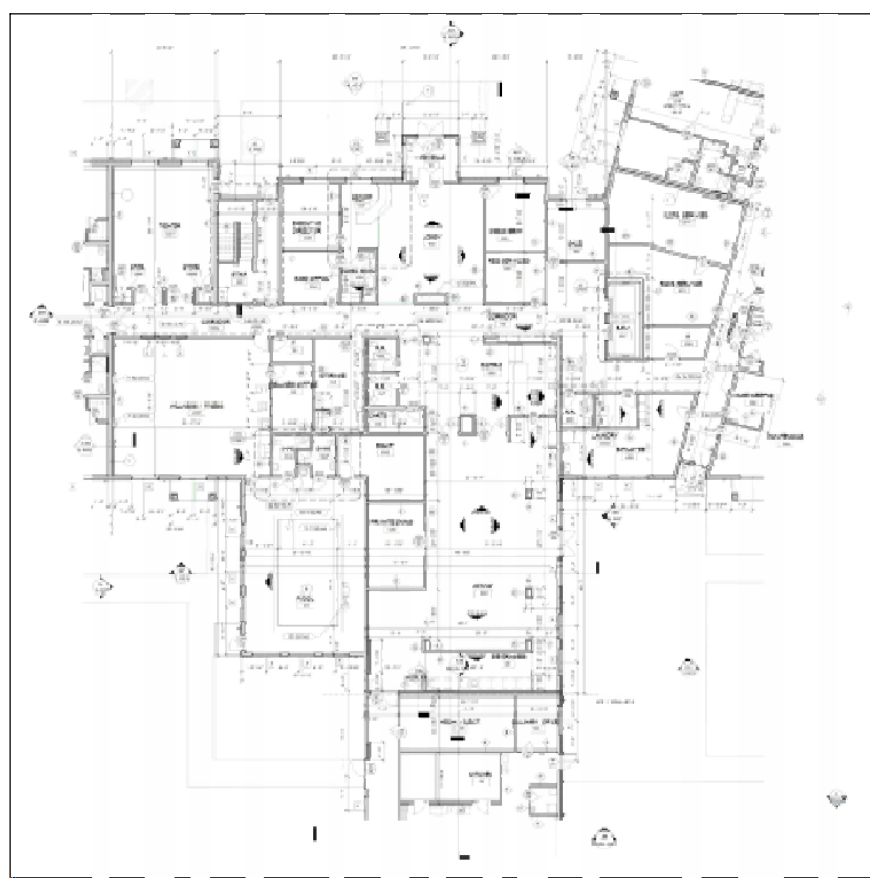
## PROJECT INFORMATION

STATE: MISSOURI  
COUNTY: JACKSON  
CITY: LEE'S SUMMIT  
TYPE: INGROUND POOL, NON-DIVING  
SCOPE: SINGLE BODY POOL  
CONSTRUCTION METHOD: SHOTCRETE  
SANITATION: CHLORINE  
HEATED: YES - NATURAL GAS

## LOCATION MAP



## SITE PLAN



## SHEET INDEX

SD0.00	COVER SHEET
SD1.01	SUBMITTALS
SD2.01	LAYOUT PLAN
SD3.01	PLUMBING PLAN - SUCTION
SD3.02	PLUMBING PLAN - RETURN
SD4.01	LIGHTING PLAN
SD5.01	BONDING PLAN
SD6.01	PROFILE-REBAR PLAN
SD8.01	DETAILS

## PROJECT TEAM

MIDWEST CUSTOM POOLS  
  
GLEN WESTERVELT, PRESIDENT  
785.766.1111  
GLEN@MIDWESTCUSTOMPOOLS.COM  
  
CLINT PINNICK, PROJECT MANAGER  
785.979.4955  
CLINT@MIDWESTCUSTOMPOOLS.COM

## POOL DATA

PERIMETER: 80 - FT  
  
SURFACE AREA: 340 - SQFT  
  
APPROXIMATE VOLUME: 8,800 - GALLONS  
  
MINIMUM TURN OVER: 6 - HOURS  
  
MINIMUM FLOW RATE: 25 - GPM

## SPECIFICATIONS

(2) MAIN DRAINS  
(2) SURFACE SKIMMERS  
(4) RETURNS  
(1) CHECK VALVE WITH FLOW GAUGE  
(1) MANUAL CHLORINE TAB FEEDER  
(1) .75HP CIRCULATION PUMP  
(1) 420 - SQFT CARTRIDGE FILTER  
(1) ROD AND FLOAT AUTOFILL  
(1) 200K BTU NATURAL GAS HEATER  
(4) LED LIGHTS  
(1) ADA CHAIR LIFT AND DECK ANCHOR  
STEGMEIR FRONTIER DECK DRAIN  
STAIR HANDRAIL AND LADDER  
WATER LINE TILE, STANDARD  
MARKER RIBBON, 2 ROWS OF 1" TILE, STANDARD  
SAFETY COPING  
WHITE PLASTER INTERIOR FINISH

## GENERAL NOTES

- > ANY CHANGES IN CONSTRUCTION PLANS OR EQUIPMENT MUST BE APPROVED BY THE GOVERNING HEALTH DEPARTMENT. CHANGES MAY REQUIRE ADDITIONAL PLAN CHECK FEES AND RE-SUBMITTAL.
- > POOL PLAN APPROVAL DOES NOT AUTHORIZE THE VIOLATION OF ANY LAW, ORDINANCE, OR REGULATION AND FINAL APPROVAL IS SUBJECT TO FIELD INSPECTION.
- > ALL EQUIPMENT SHALL BE INSTALLED PER MANUFACTURER'S INSTRUCTIONS.

## GENERAL NOTES

- > ALL EQUIPMENT AND MATERIALS NOT SHOWN OR SPECIFIED ON THESE PLANS, BUT REQUIRED TO COMPLETE THIS PROJECT, SHALL BE SUPPLIED BY THE POOL CONTRACTOR AS PART OF THIS CONTRACT WORK.
- > REINFORCING STEEL OF ALL AQUATIC FEATURES SHALL BE BONDED WITH A #8 COPPER WIRE. TIED BOND TO EACH MECHANICAL SYSTEM AND ALL RAIL ANCHORS AND METAL WITHIN 5 FT OF POOL EDGE.

## GENERAL NOTES

- > CRUSHED ROCK BELOW POOL FLOOR TO BE 1/2" CLEAN. MINIMUM OF 4" DEPTH
- > ALL STEEL TO BE GRADE 40, #4 BAR AND A MINIMUM OF 12" ON CENTER EACH WAY HORIZONTAL AND VERTICAL. DAM WALLS 12" THICK TO HAVE A DOUBLE MAT OF STEEL
- > REINFORCING STEEL TO BE PLACED A MINIMUM OF 2" BELOW EXPOSED FACE OF CONCRETE

## CODE COMPLIANCE

- > ANSI POOL AND SPA STANDARD TO PREVENT SUCTION ENTRAPMENT
- > VIRGINIA GRAEME BAKER SAFETY ACT
- > JOHNSON COUNTY ENVIRONMENTAL SANITARY CODE
- > JOHNSON COUNTY CODE OF REGULATIONS FOR BUILDINGS AND CONSTRUCTION.

MIDWEST CUSTOM POOLS

600 Lincoln Street

Lawrence, KS 66044

P. 785.843.9119

F. 785.843.6524

MidwestCustomPools.com



THE PRINCETON

1701 SE OLDHAM PARKWAY

LEE'S SUMMIT, MO

Plan Date:  
09.28.2019

Drawn By: GW

SHEET NO.

SD0.00




**PENTAIR**

WHISPERFLO

# WHISPERFLO<sup>®</sup>

## HIGH PERFORMANCE PUMP

### THE INDUSTRY STANDARD BY EVERY MEASURE

We call it the silkiest pump in pool history. Its innovative hydraulic design moves more water from less effort and more quietly than can other pumps. Lower noise operation contributes to the WhisperFlo pump's other highest water "flow" advantage: performance designed with a built-in acoustic cancellation. And, the WhisperFlo pump is designed to be a silent workhorse. Its engineered thermally-insulating housing maintains extreme heat and cold resistance. The commercial grade motor pump is a magnetic stainless steel pump with a cast-iron volute that never needs oil change. Engagement to provide superior performance in any size pool to pool and spa combination, the WhisperFlo pump is also built to a lifetime, and it's true. We measure the industry's top value for you.

The WhisperFlo pump can flow 10 gpm, 100 gpm, 150 gpm and it can flow 100 horsepower, 150 horsepower and more flow.

- Each line engineered for better accuracy, water, clean water, salt water.
- Overload capacity handles pressure, low pressure, clean water.
- Sweat-tough 304 stainless impeller shaft and impeller-mounted rubber impellers that can swing for years.
- The pump (Meridol Corp. and Spang) Ltd. is a quiet machine and it's likely to be built with a quiet pump.

[pentairpool.com](http://pentairpool.com)

## Jandy Pro Series Never Lube® 2" - 2½" Three Way PVC Valve Installation Instructions

### ⚠ WARNING

**FOR YOUR SAFETY -** This product must be installed and serviced by a contractor who is licensed and qualified in pool equipment by the jurisdiction in which the product will be installed where such state or local requirements exist. The maintainer must be a professional with sufficient experience in pool equipment installation and maintenance so that all of the instructions in this manual can be followed exactly. Before installing this product, read and follow all **warning notices** and **instructions** that accompany this product. Failure to follow warning notices and instructions may result in property damage, personal injury, or death. Improper installation and/or operation will void the **warranty**.

### PLUMBING

One valve designed for both 2" and 2½" pipe. 1" pipe slip fits into valve ports, 2½" pipe is joined using 2½" pipe coupler, 45° or 90° fitting. See figure below.

The internal valve assembly must be removed prior to gluing valve body to pipe fittings. Make certain no glue enters valve body beyond ports.

**WELD-ON PVC GRAY IS RECOMMENDED.**

#### VALVE HANDLE USE

**Lock Knob** - Loosen lock knob to turn handle. To secure handle, turn knob down finger tight. See figure below.

**Off Indicator** - Arrow on indicator represents exact position of internal valve diverter coil.

**Handle Stops** - Premating that

2½" pipe, install on valve cover to stop diverter in complete port shut-off position. Be sure the word "WENT 1/2" on valve cover is over the incoming flow port.

4550303 Rev C

CLEAN & CLEAR PLUS

# CLEAN & CLEAR PLUS

## CARTRIDGE FILTER

### CRYSTAL CLEAR WATER THE EASY WAY

The Clean & Clear® Plus filter combines liquid permeance with no maintenance, so you'll never find a design as clear and simple as ours. It's the only cartridge filter design you can rely on to last up to 10 years. It's also the only filter that can be cleaned in place, saving you almost 70 minutes for average 9' or better pools in 1,000+ gallons. Use the easy-to-use design to keep your pool water clear and sparkling clean. No maintenance. No cleaning. Just clean water is one step away. So, remove the cartridge, hose it clean and install the Clean & Clear Plus filter. You're ready to go again.

We've maximized cartridge surface consistency to block and trap the maximum amount of solids, plus we use the most durable material in the industry. The Clean & Clear Plus is the only dedicated commercial-grade performance that keeps pools clean and sparkling. This is our best filter.

- The cartridge design traps more dirt and sends it home, leaving clean water.
- Cleaning is as easy as remove and rinse.
- Changing out different water systems is straightforward, with patented parts to speed service time.
- 70" tall design for access and 3 separate screens to simplify draining during maintenance.
- Tangential surface formed polypropylene built in strong and corrosion-resistant to extra long life.

**AN ECO SELECT® BRAND PRODUCT**

The Eco Select® brand provides you greenness and more efficient equipment options. Water that enters efficiently through the Clean & Clear® Plus filter, after allowing its natural weight and surface to leave its own space to move its energy up. And when you use significantly less water, you can backwash you

[pentairpool.com](http://pentairpool.com)

# GLOBRITE® POOL AND SPA LED LIGHTS

## ADD THE MAGIC AND VIBRANCY OF WHITE LED LIGHTING

Globrite White LED lights are engineered with the brightest, most efficient LED light technology on the market today.

- LED lighting creates powerful illumination with incredible energy efficiency.
- Adds color vibrancy to the environment as 70% worth of non-visible light.
- Long life span, made possible by the beauty of water, maintains pool energy and reduces maintenance costs.
- Savings add up with extended service life and energy efficiency.

LECO  
LIGHTING

LECO  
LIGHTING

LECO  
LIGHTING

LECO  
LIGHTING

LECO  
LIGHTING

LECO  
LIGHTING

LECO  
LIGHTING

LECO  
LIGHTING

LECO  
LIGHTING

LECO  
LIGHTING

LECO  
LIGHTING

LECO  
LIGHTING

LECO  
LIGHTING

LECO  
LIGHTING

LECO  
LIGHTING

LECO  
LIGHTING

LECO  
LIGHTING

LECO  
LIGHTING

LECO  
LIGHTING

LECO  
LIGHTING

LECO  
LIGHTING

LECO  
LIGHTING

LECO  
LIGHTING

LECO  
LIGHTING

LECO  
LIGHTING

LECO  
LIGHTING

LECO  
LIGHTING

LECO  
LIGHTING

LECO  
LIGHTING

LECO  
LIGHTING

LECO  
LIGHTING

LECO  
LIGHTING

LECO  
LIGHTING

LECO  
LIGHTING

LECO  
LIGHTING

LECO  
LIGHTING

LECO  
LIGHTING

LECO  
LIGHTING

LECO  
LIGHTING

LECO  
LIGHTING

LECO  
LIGHTING

LECO  
LIGHTING

LECO  
LIGHTING

LECO  
LIGHTING

LECO  
LIGHTING

LECO  
LIGHTING

LECO  
LIGHTING

LECO  
LIGHTING

LECO  
LIGHTING

LECO  
LIGHTING

LECO  
LIGHTING

LECO  
LIGHTING

LECO  
LIGHTING

LECO  
LIGHTING

LECO  
LIGHTING

LECO  
LIGHTING

LECO  
LIGHTING

LECO  
LIGHTING

LECO  
LIGHTING

LECO  
LIGHTING

LECO  
LIGHTING

LECO  
LIGHTING

LECO  
LIGHTING

LECO  
LIGHTING

LECO  
LIGHTING

LECO  
LIGHTING

LECO  
LIGHTING

LECO  
LIGHTING

LECO  
LIGHTING

LECO  
LIGHTING

LECO  
LIGHTING

LECO  
LIGHTING

LECO  
LIGHTING

LECO  
LIGHTING

LECO  
LIGHTING

LECO  
LIGHTING

LECO  
LIGHTING

LECO  
LIGHTING

LECO  
LIGHTING

LECO  
LIGHTING

LECO  
LIGHTING

LECO  
LIGHTING

LECO  
LIGHTING

LECO  
LIGHTING

LECO  
LIGHTING

LECO  
LIGHTING

LECO  
LIGHTING

LECO

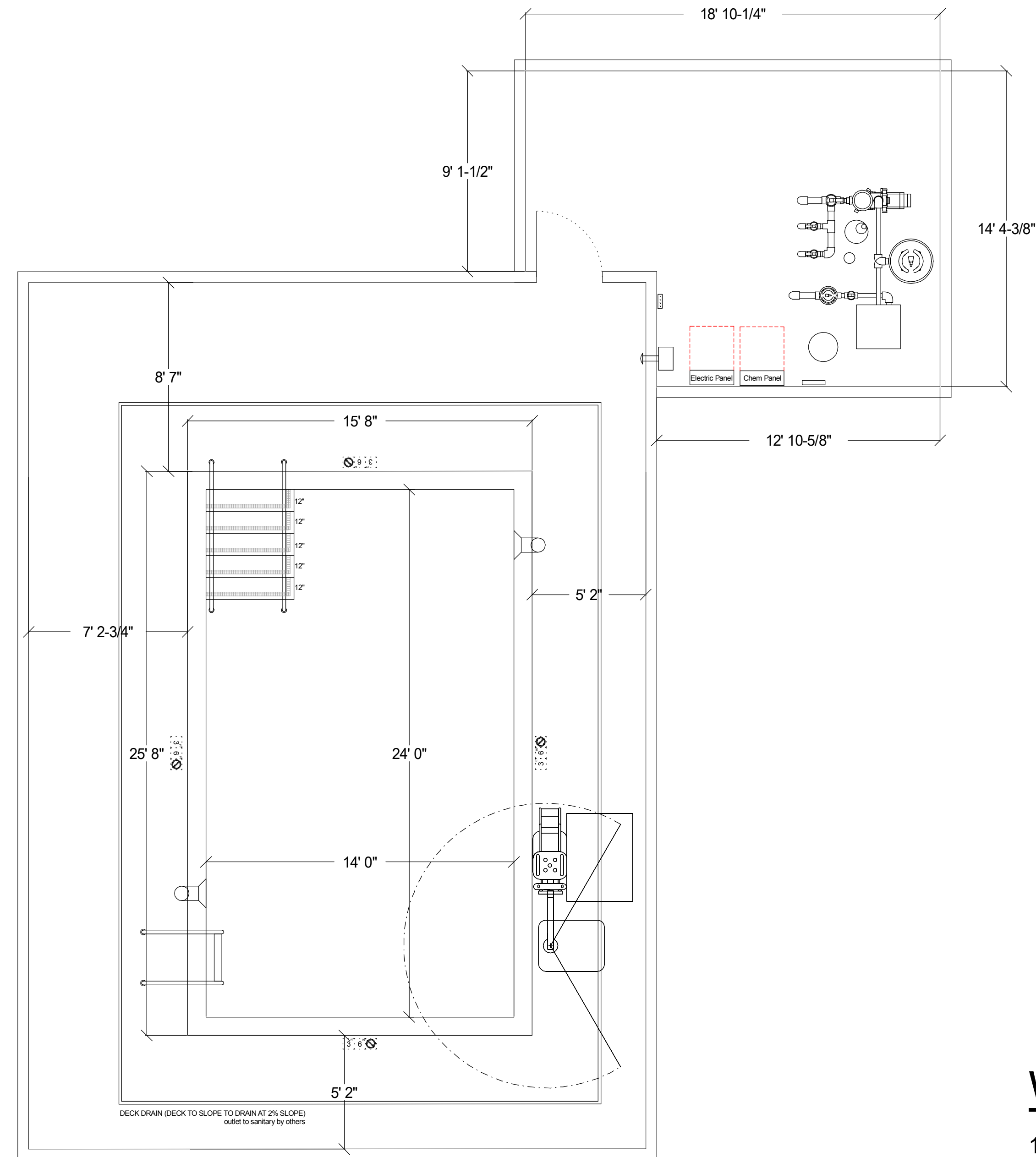
[illegible]The logo for Midwest Custom Pools features a stylized graphic of a person swimming or jumping, composed of a yellow circle for the head and three curved, overlapping shapes in blue, green, and purple for the body. To the right of the graphic, the text "Midwest" is written in a large, bold, blue sans-serif font, and "CUSTOM POOLS" is written in a smaller, blue, all-caps sans-serif font below it.

**THE PRINCETON**  
1701 SE OLDHAM PARKWAY  
LEE'S SUMMIT, MO

Drawn By: DN

# SD1.01





## WORK TO BE DONE BY OTHERS

1. ALL ELECTRICAL WORK (BY OTHERS) MUST BE INSTALLED BY A LICENSED ELECTRICIAN IN ACCORDANCE WITH NEC AND APPLICABLE LOCAL CODES AND ORDINANCES.
2. BONDING SHALL BE PERFORMED IN ACCORDANCE WITH SECTION 680-25 OF NEC.
3. GAS LINE AND FLUE VENTING FOR HEATER ARE BY OTHERS.
4. POOL ROOM AND MECHANICAL ROOM ARE BY OTHERS.
5. POOL DECKING BY OTHERS.
6. SANITARY LINE AND TERMINATION FOR BACKWASHING ARE BY OTHERS. MINIMUM FLOWRATE IS LISTED IN DESIGN DRAWINGS.
7. DOMESTIC WATER CONNECTIONS ARE BY OTHERS.
8. DRAINING OF POOL IS BY OTHERS.
9. REFERENCE AND FOLLOW THE GEOTECHNICAL REPORT FOR ALL PERTINENT INFORMATION REGARDING SITE CONDITIONS.
10. POOL ROOM AND MECHANICAL ROOM LIGHTING ARE BY OTHERS.



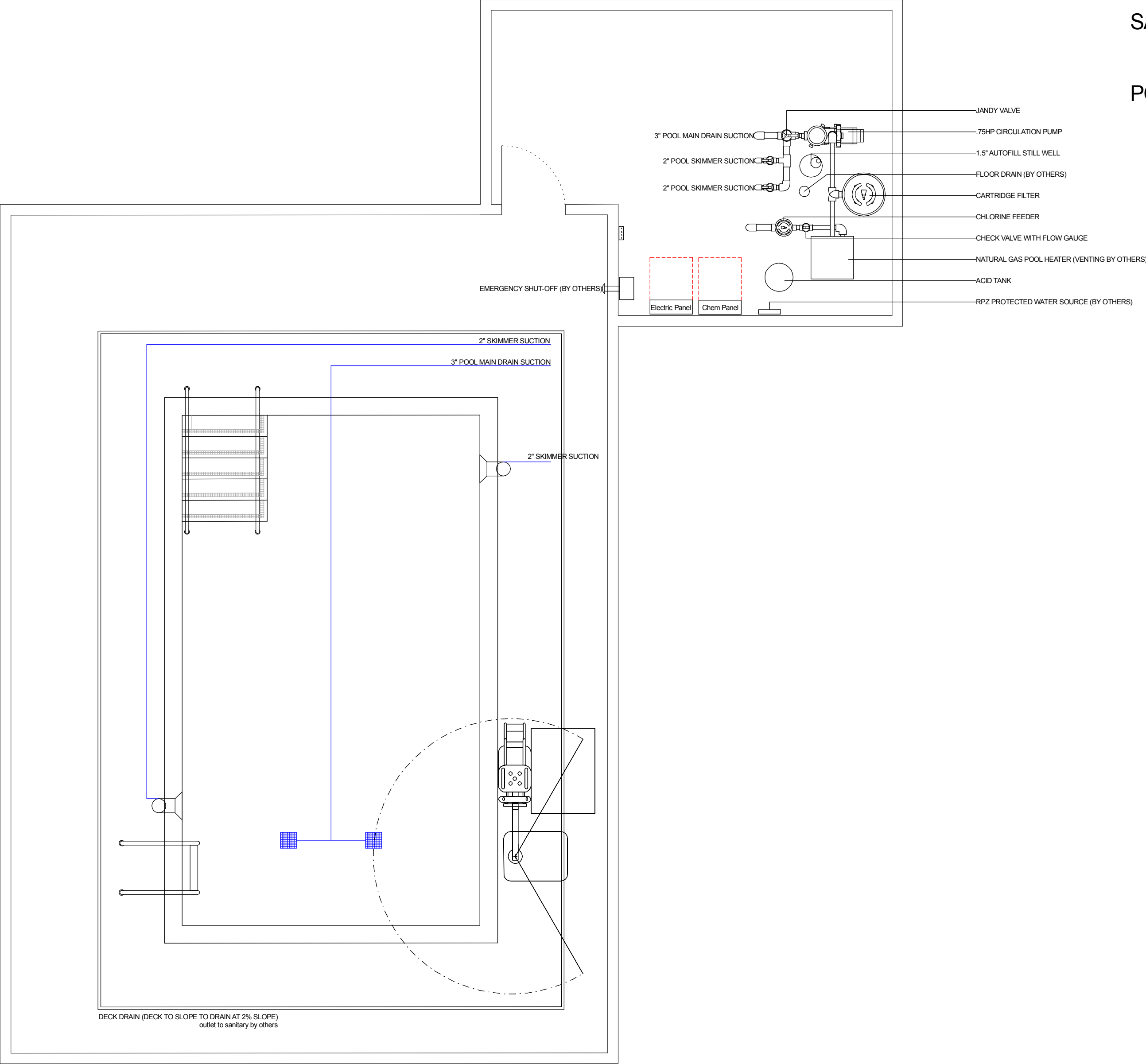
MIDWEST CUSTOM POOLS  
600 Lincoln Street  
Lawrence, KS 66044  
P. 785.843.9119  
F. 785.843.6524  
MidwestCustomPools.com

**THE PRINCETON**  
1701 SE OLDHAM PARKWAY  
LEE'S SUMMIT, MO

Plan Date:  
09.15.2019

Drawn By: DN

SHEET NO.  
**SD2.01**



EQUIPMENT

CIRCULATION PUMP  
PENTAIR WHISPERFLO .75HP

FILTRATION  
PENTAIR CV520, 520 SQFT

HEATER  
MASTERTEMP, 250K BTU, NATURAL GAS

AUTOFILL  
PENTAIR T40-F

SANITATION  
PENTAIR RAINBOW HC-3315


POLARIS 9550 WD ROBOTIC CLEANER

THE PRINCETON  
1701 SE OLDHAM PARKWAY  
LEE'S SUMMIT, MO

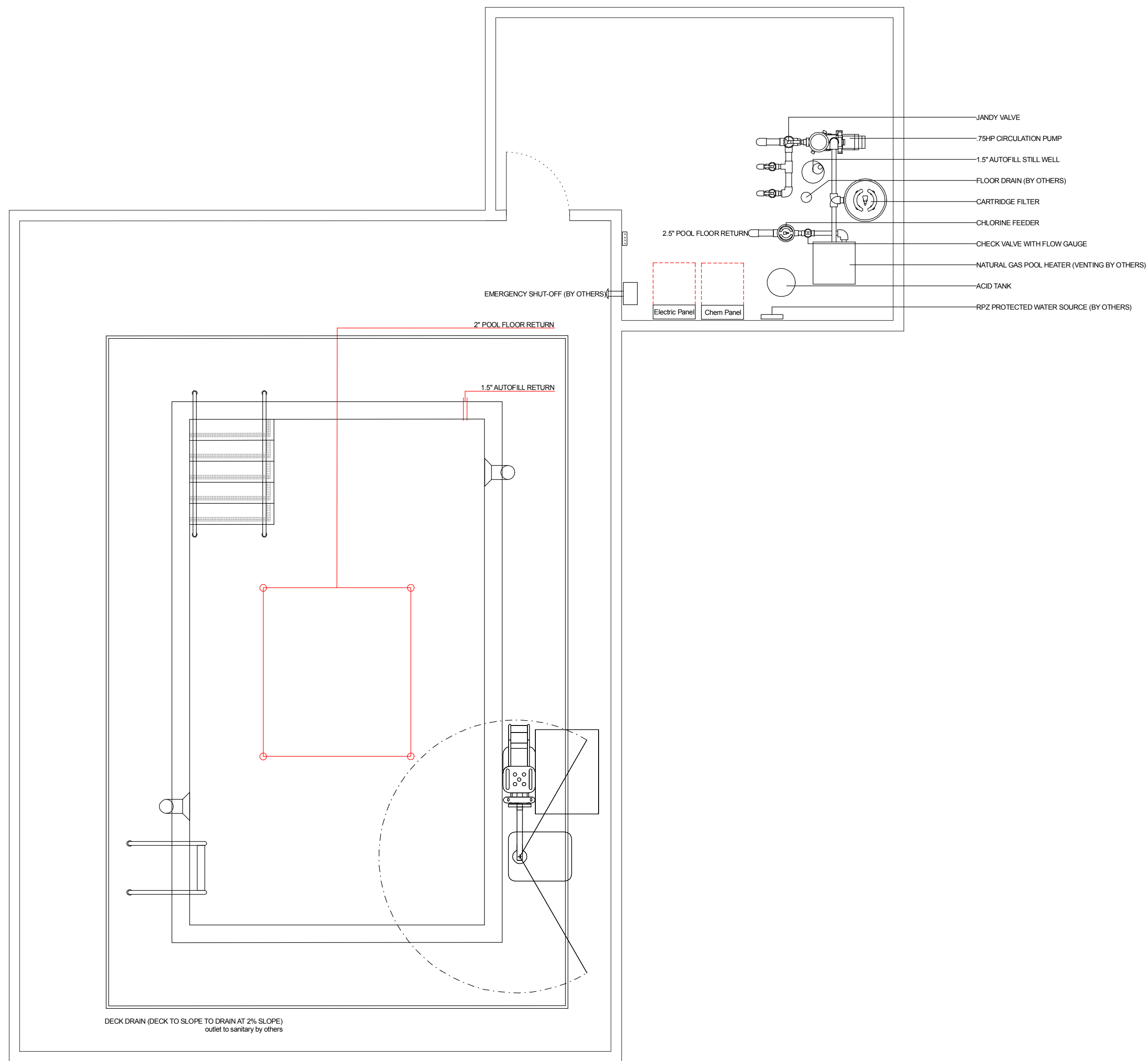
Plan Date:  
09.28.2019

Drawn By: DN

SHEET NO.  
SD3.01



MIDWEST CUSTOM POOLS  
600 Lincoln Street  
Lawrence, KS 66044  
P. 785.843.9119  
F. 785.843.6524  
MidwestCustomPools.com



EQUIPMENT

CIRCULATION PUMP  
PENTAIR WHISPERFLO .75HP

FILTRATION  
PENTAIR CV520, 520 SQFT

HEATER  
MASTERTEMP, 250K BTU, NATURAL GAS

AUTOFILL  
PENTAIR T40-F

SANITATION  
PENTAIR RAINBOW HC-3315

POLARIS 9550 WD ROBOTIC CLEANER



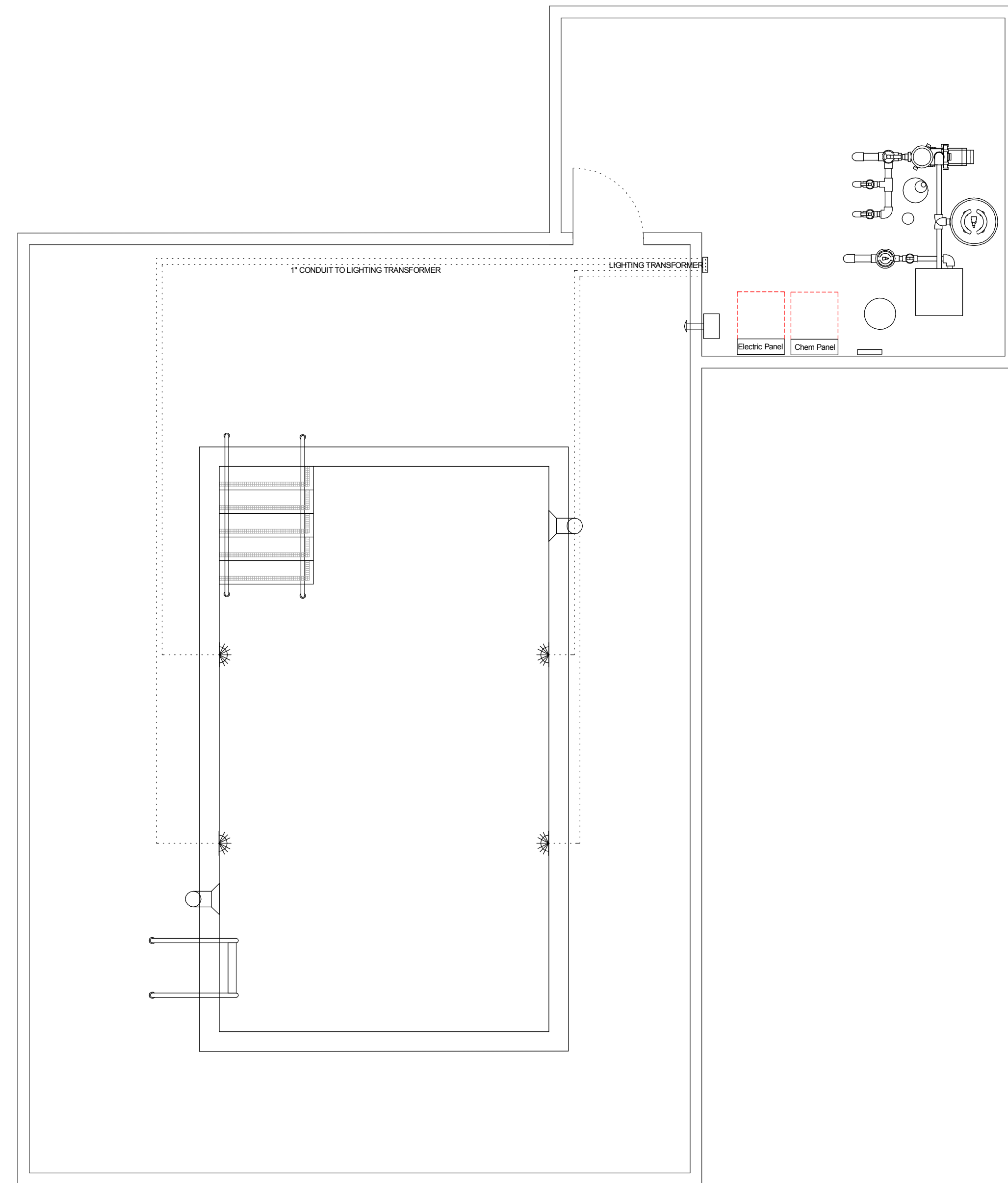
MIDWEST CUSTOM POOLS  
600 Lincoln Street  
Lawrence, KS 66044  
P. 785.843.9119  
F. 785.843.6524  
MidwestCustomPools.com

THE PRINCETON  
1701 SE OLDHAM PARKWAY  
LEE'S SUMMIT, MO

Plan Date:  
09.28.2019

Drawn By: DN

SHEET NO.  
SD3.02



## EQUIPMENT

LIGHTING  
PENTAIR GLOBRITE LED

300W TRANSFORMER

**THE PRINCETON**  
1701 SE OLDHAM PARKWAY  
LEE'S SUMMIT, MO

Plan Date:  
09.28.2019

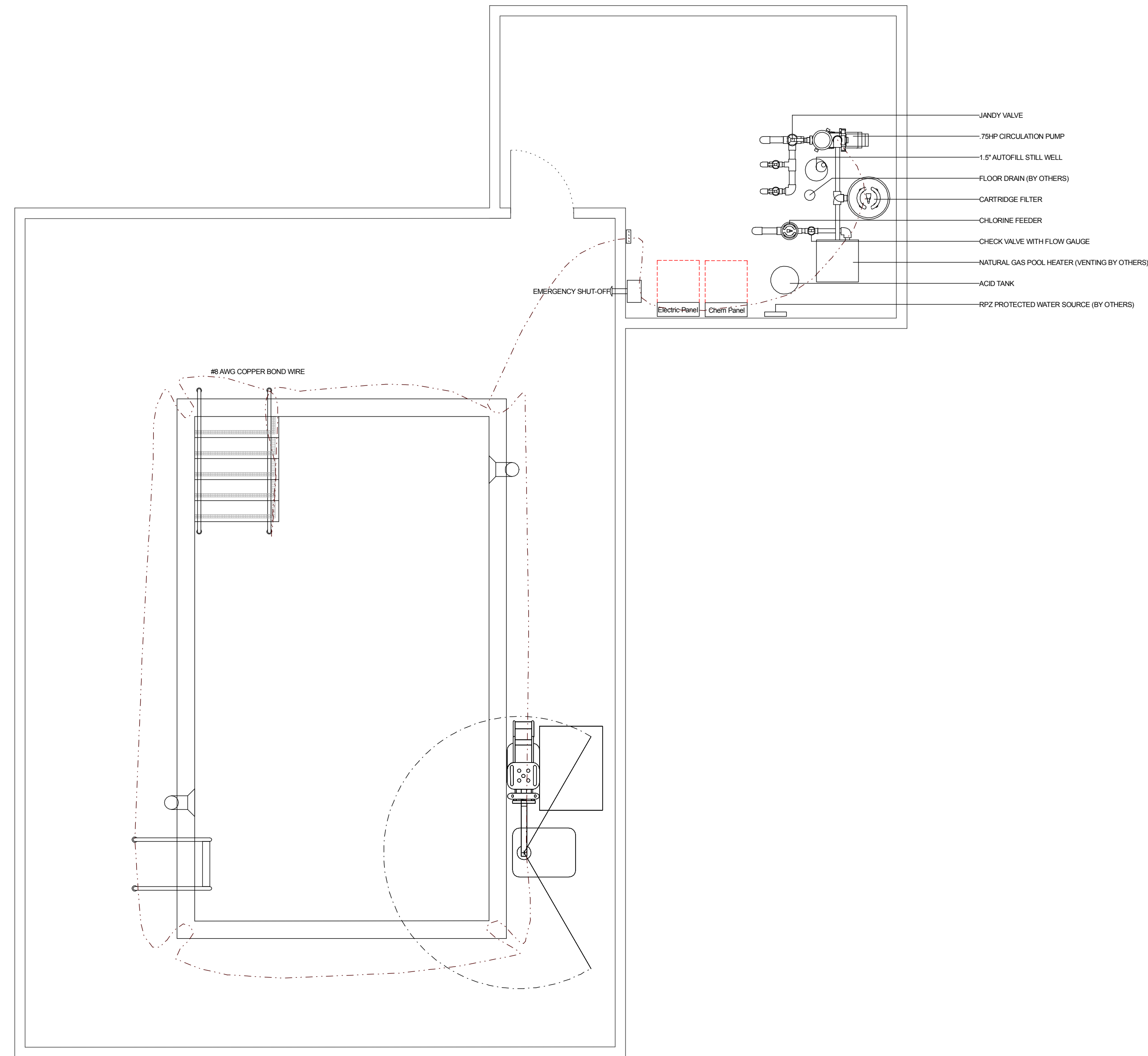
Drawn By: DN

SHEET NO.

**SD4.01**



MIDWEST CUSTOM POOLS  
600 Lincoln Street  
Lawrence, KS 66044  
P. 785.843.9119  
F. 785.843.6524  
MidwestCustomPools.com



BONDING SHALL BE PERFORMED IN ACCORDANCE WITH SECTION 680-25 OF NEC.

**THE PRINCETON**  
1701 SE OLDHAM PARKWAY  
LEE'S SUMMIT, MO

Plan Date:  
09.28.2019

Drawn By: DN

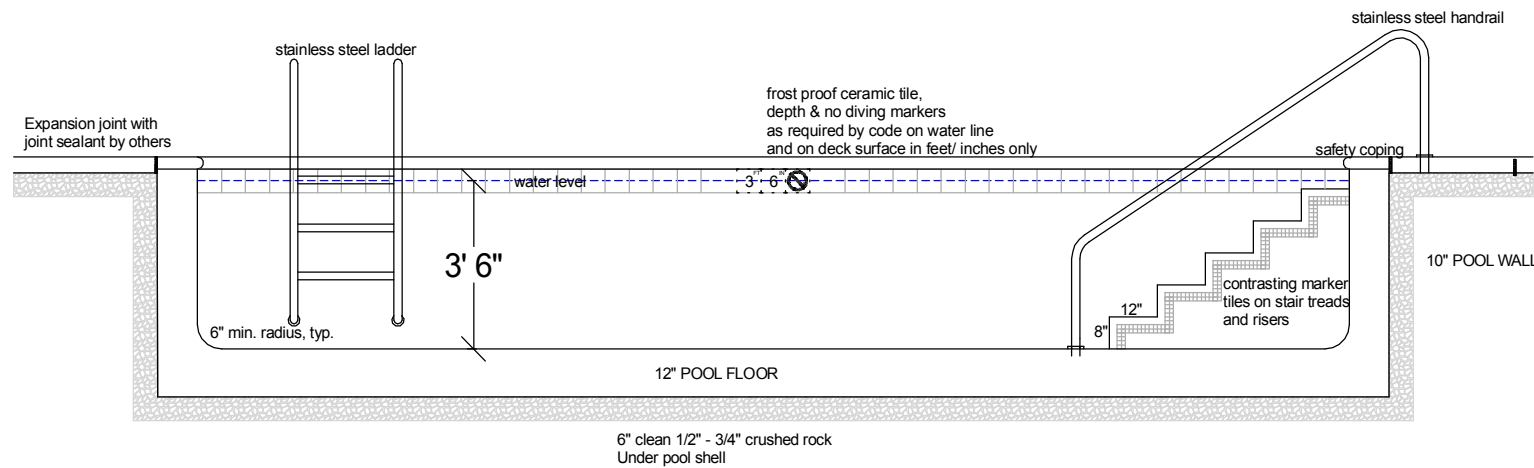
SHEET NO.

**SD5.01**

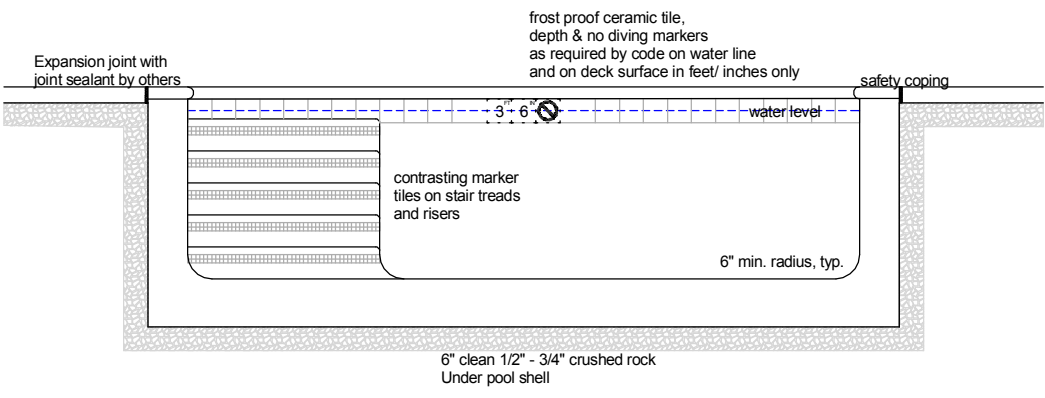


**MIDWEST CUSTOM POOLS**  
600 Lincoln Street  
Lawrence, KS 66044  
P: 785.843.9119  
F: 785.843.6524  
MidwestCustomPools.com

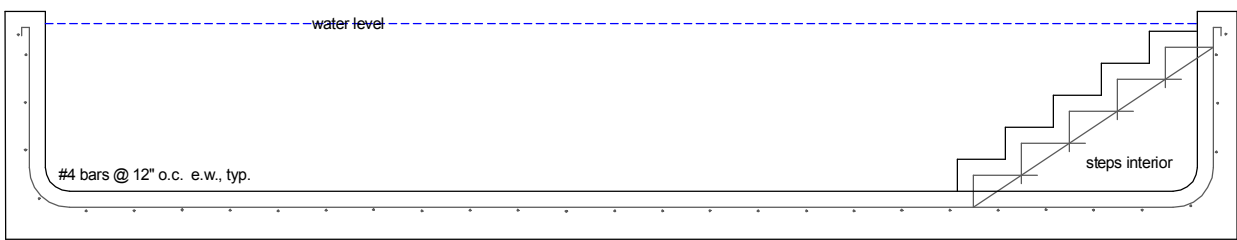
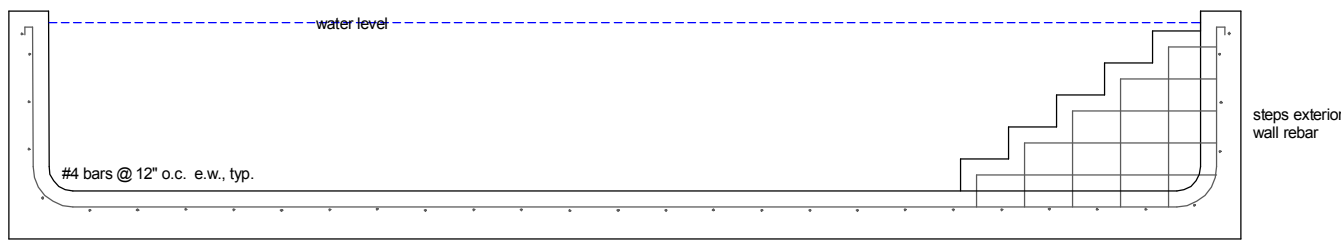




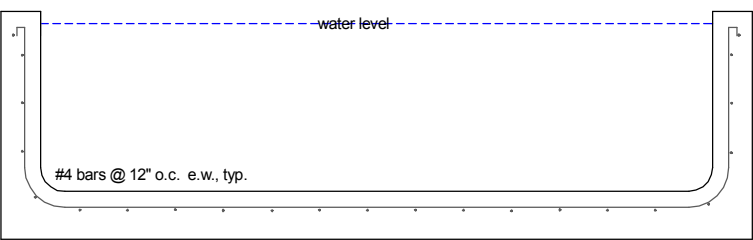
PROFILE LENGTH \_\_\_\_\_



PROFILE WIDTH \_\_\_\_\_



REBAR LENGTH \_\_\_\_\_



REBAR WIDTH \_\_\_\_\_

MIDWEST CUSTOM POOLS  
600 Lincoln Street  
Lawrence, KS 66044  
P. 785.843.9119  
F. 785.843.6524  
MidwestCustomPools.com



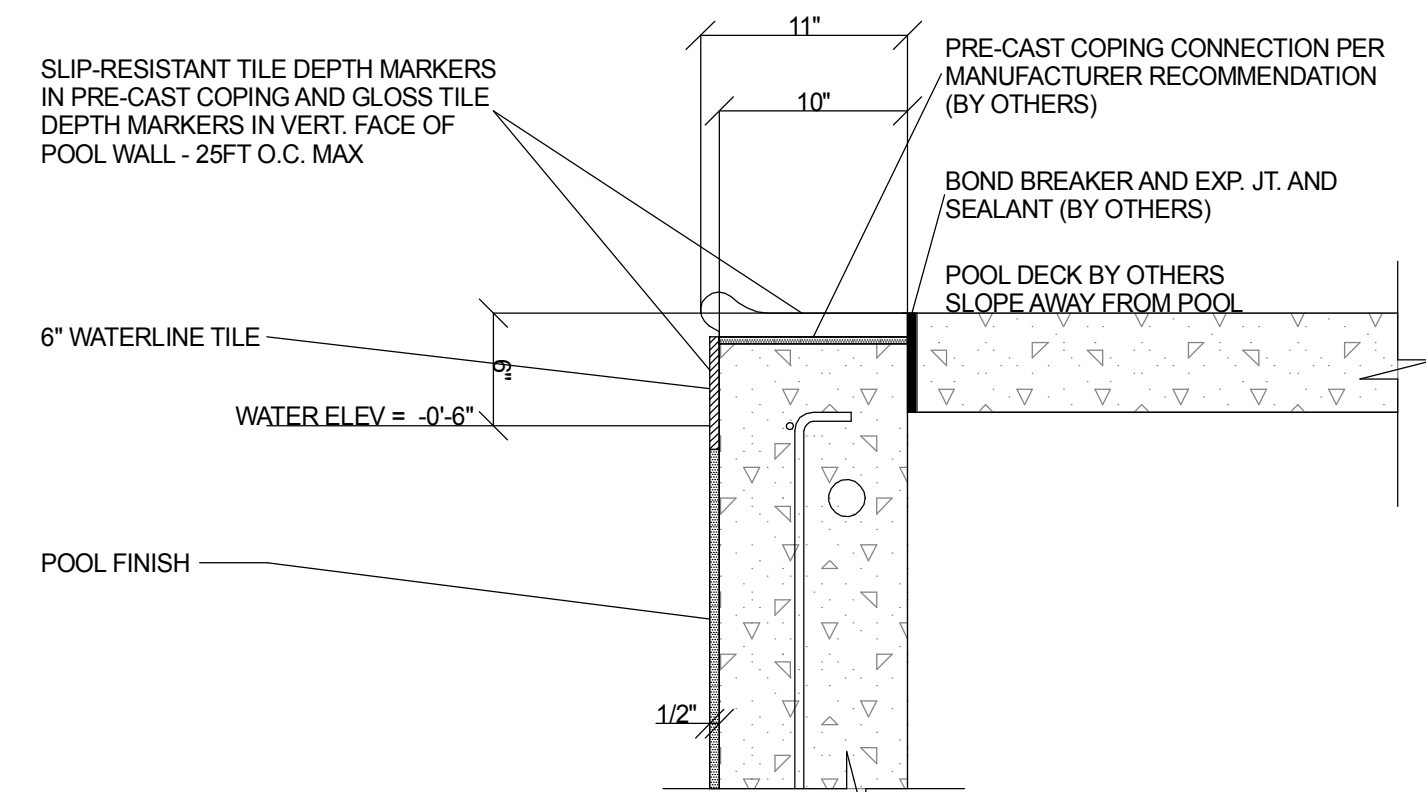
THE PRINCETON  
1701 SE OLDHAM PARKWAY  
LEE'S SUMMIT, MO

Plan Date:  
09.28.2019

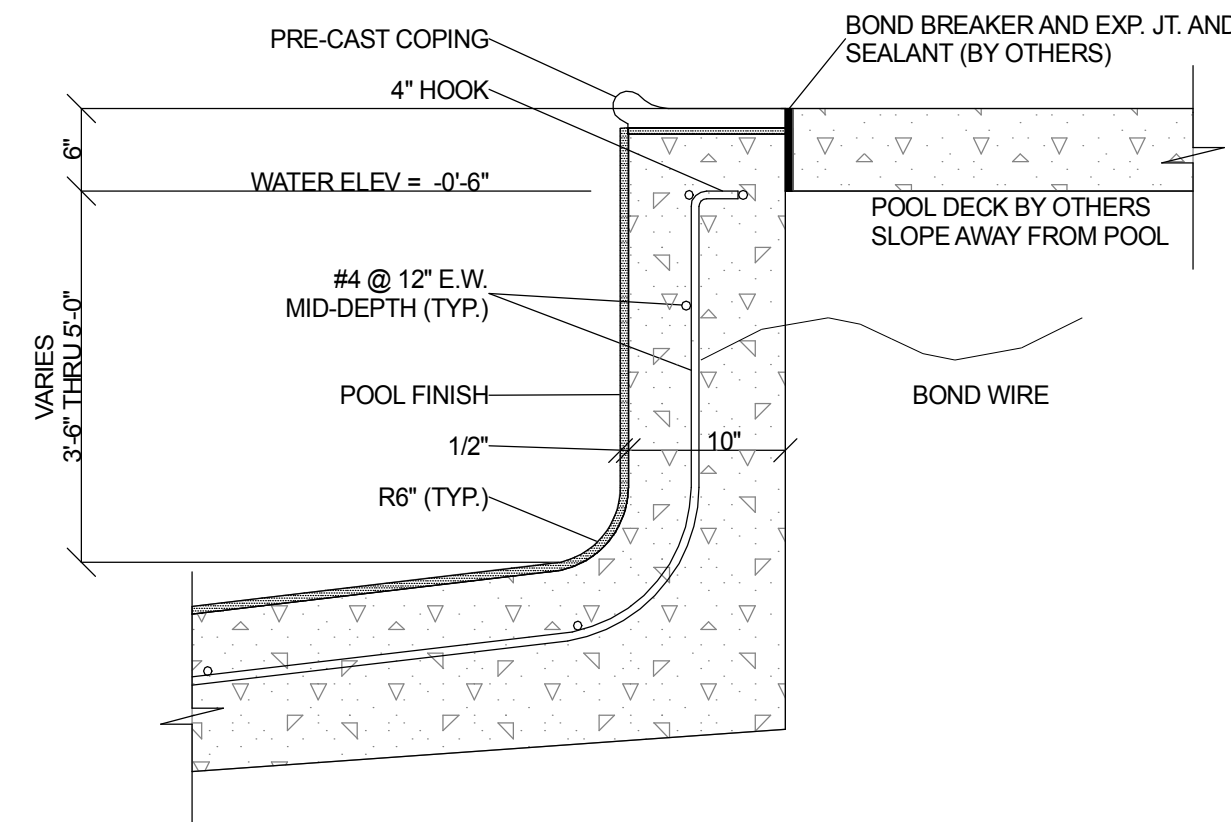
Drawn By: DN

SHEET NO.  
SD6.01

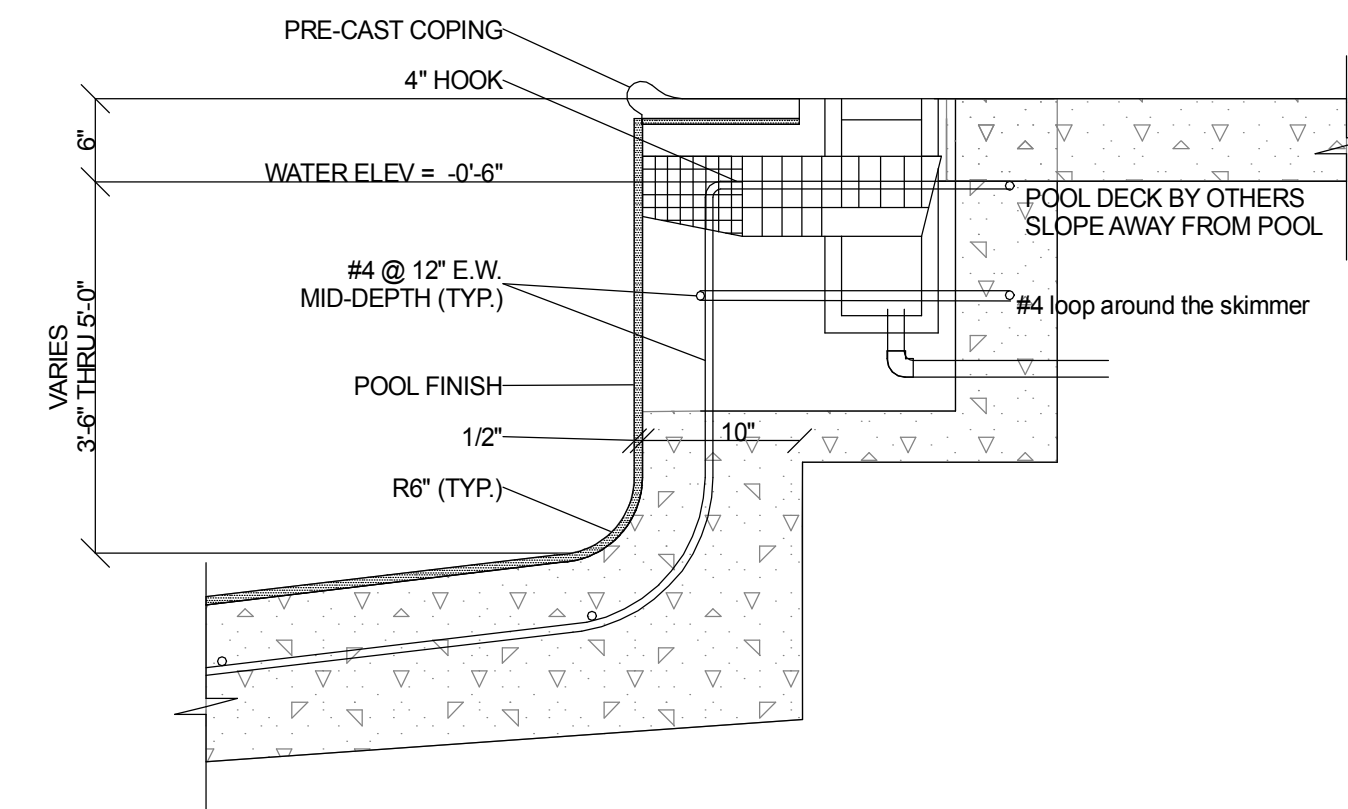




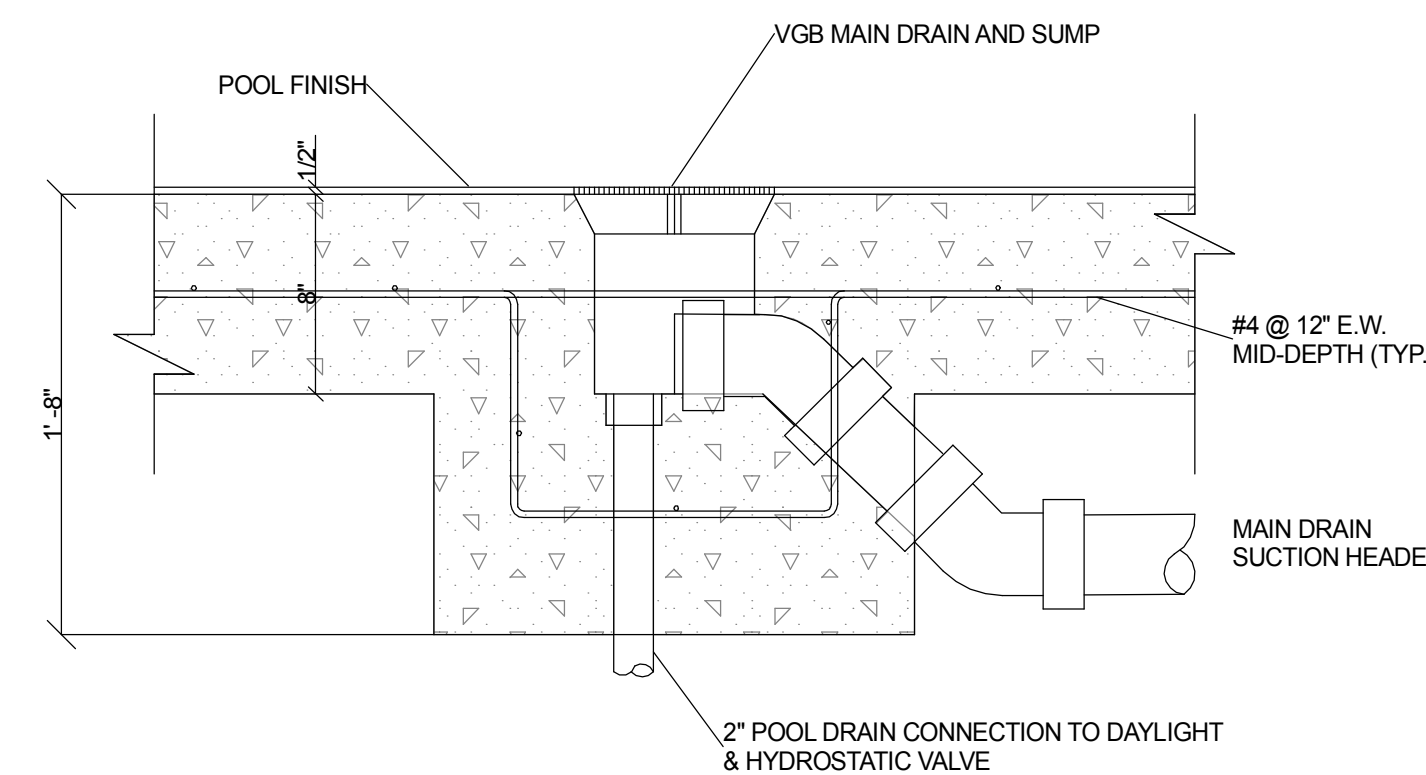
TYPICAL TOP OF WALL AND COPING DETAIL | 01  
NO SCALE



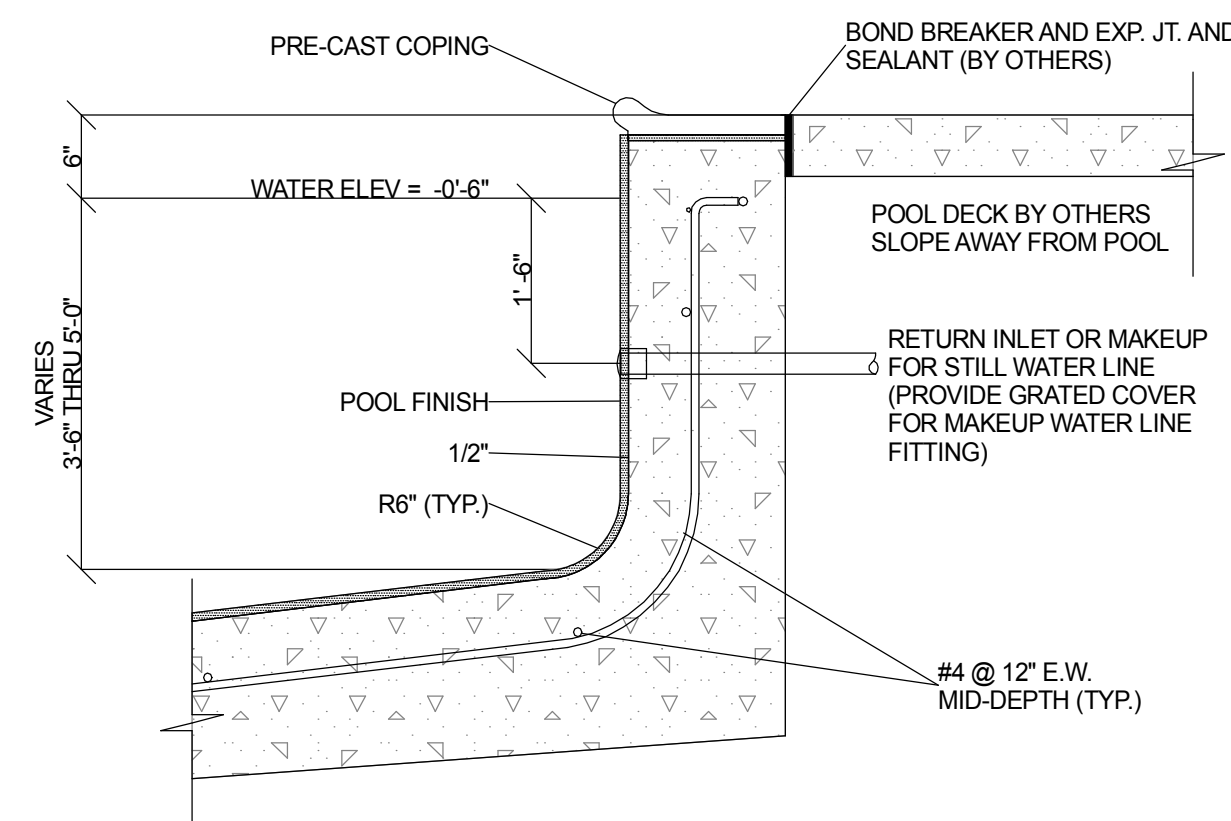
TYPICAL POOL WALL SECTION | 02  
NO SCALE



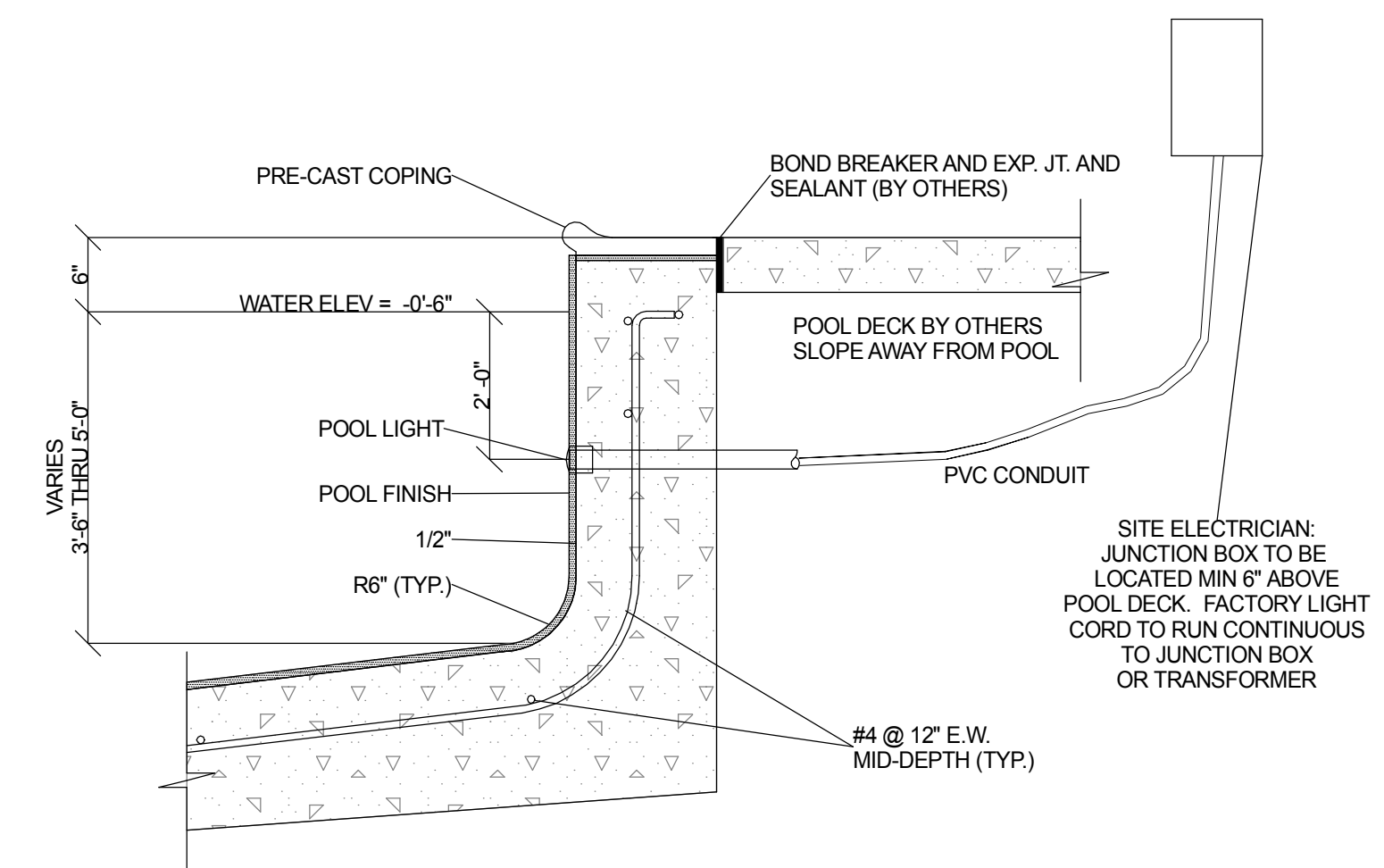
TYPICAL POOL SKIMMER SECTION | 03  
NO SCALE



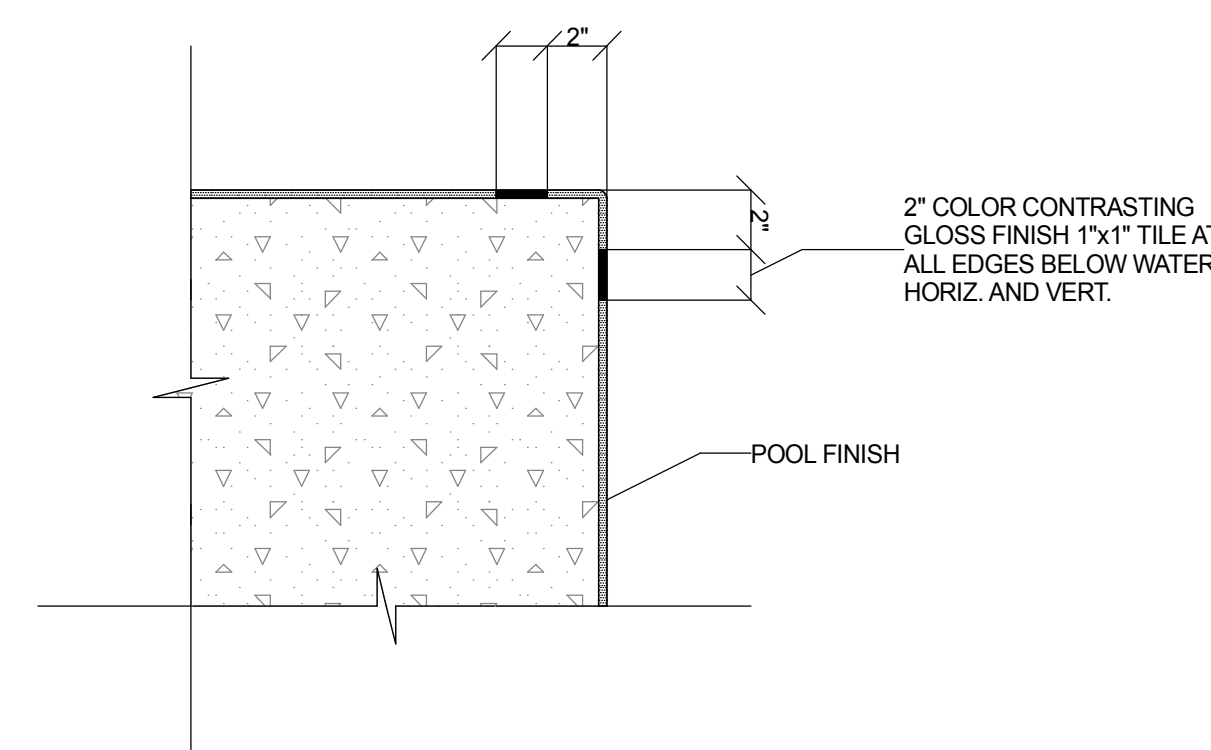
POOL MAIN DRAIN SECTION | 07  
NO SCALE



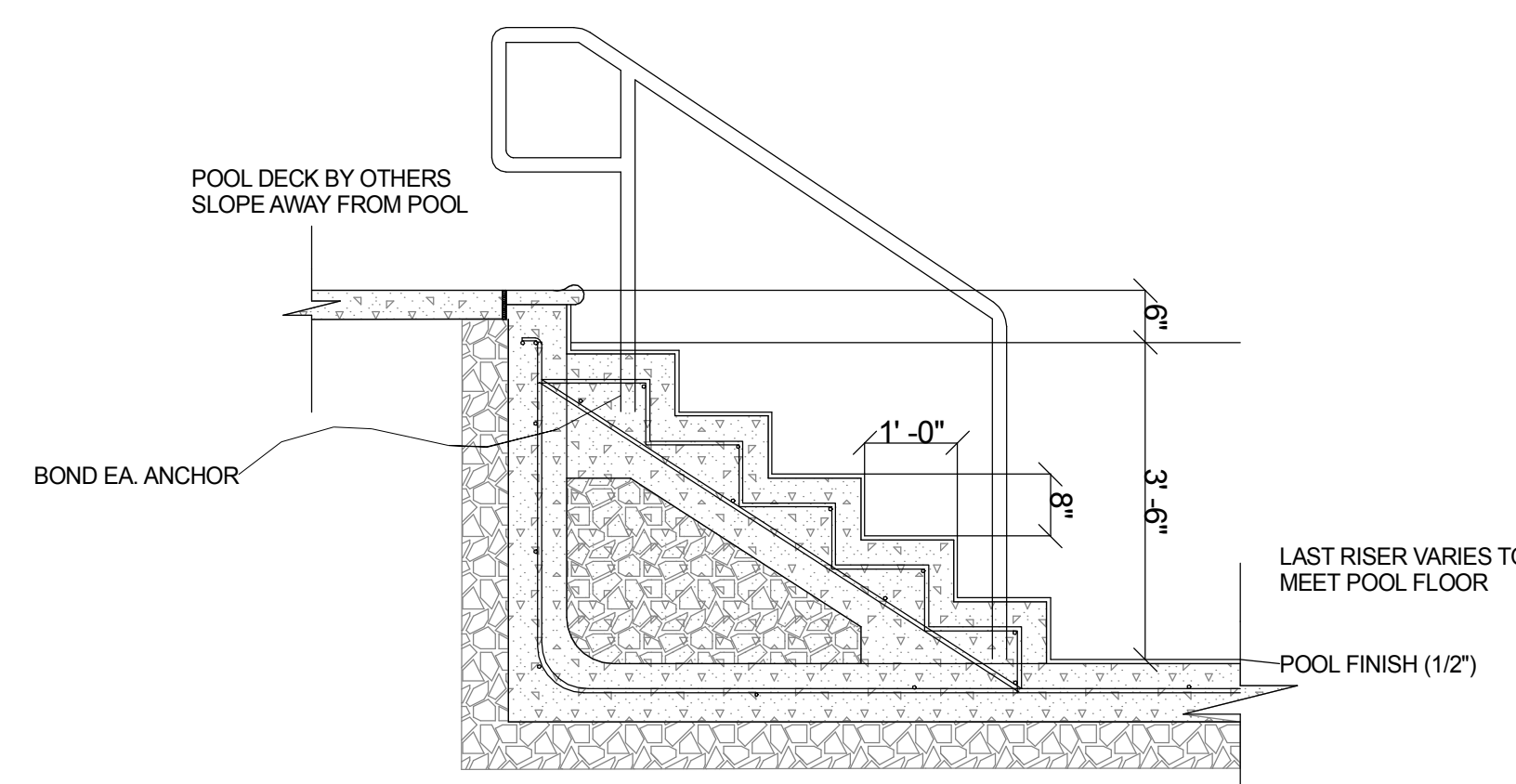
POOL RETURN INLET SECTION | 05  
NO SCALE



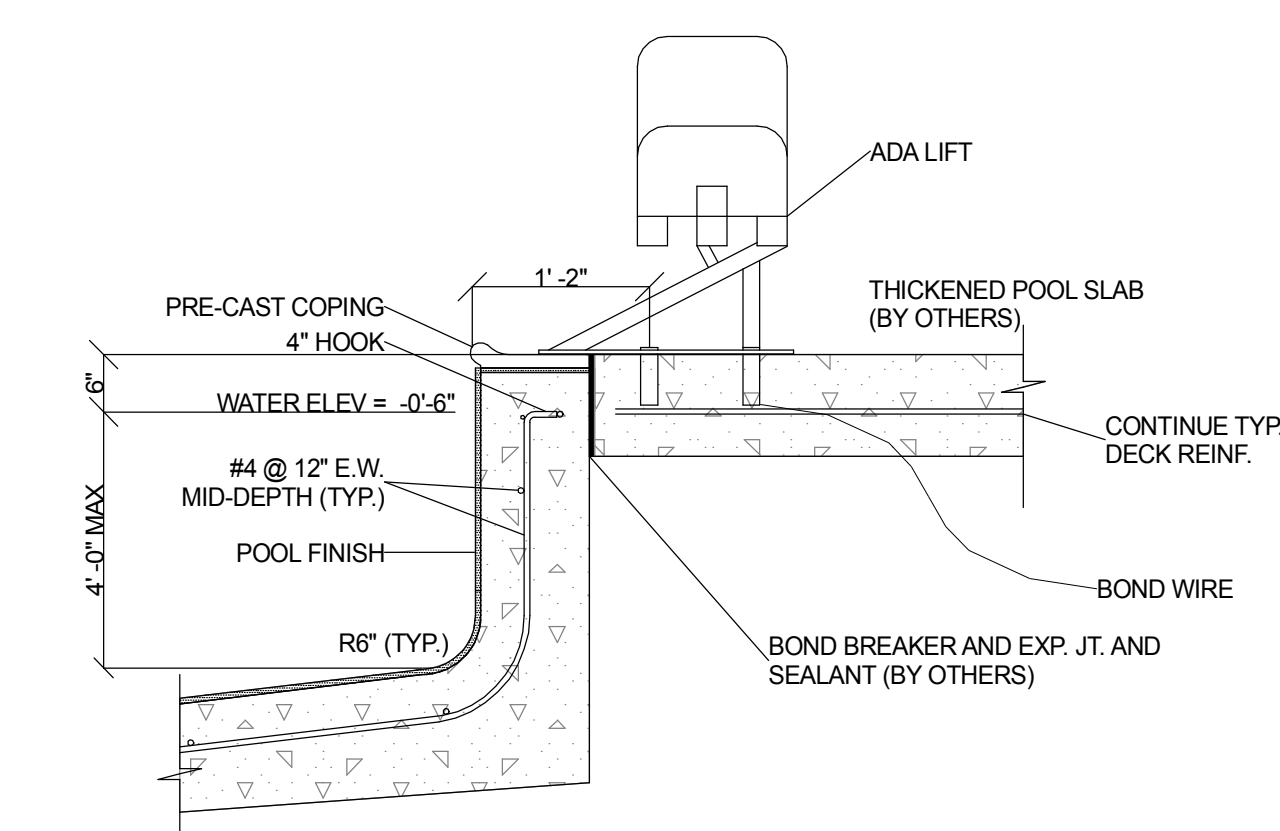
POOL LIGHT SECTION | 06  
NO SCALE



STAIR TREAD AND UNDER WATER EDGE DETAIL | 09  
NO SCALE



POOL STAIR DETAIL | 08  
NO SCALE



POOL ADA LIFT SECTION | 04  
NO SCALE

MIDWEST CUSTOM POOLS  
600 Lincoln Street  
Lawrence, KS 66044  
P. 785.843.9119  
F. 785.843.6524  
MidwestCustomPools.com

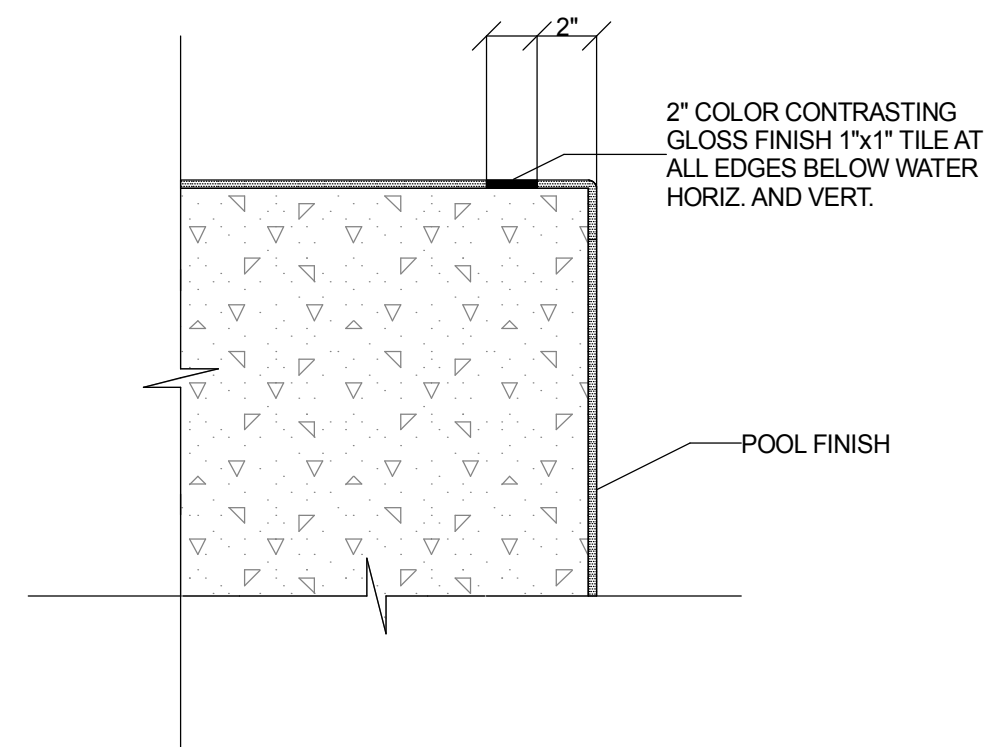


THE PRINCETON  
1701 SE OLDHAM PARKWAY  
LEE'S SUMMIT, MO

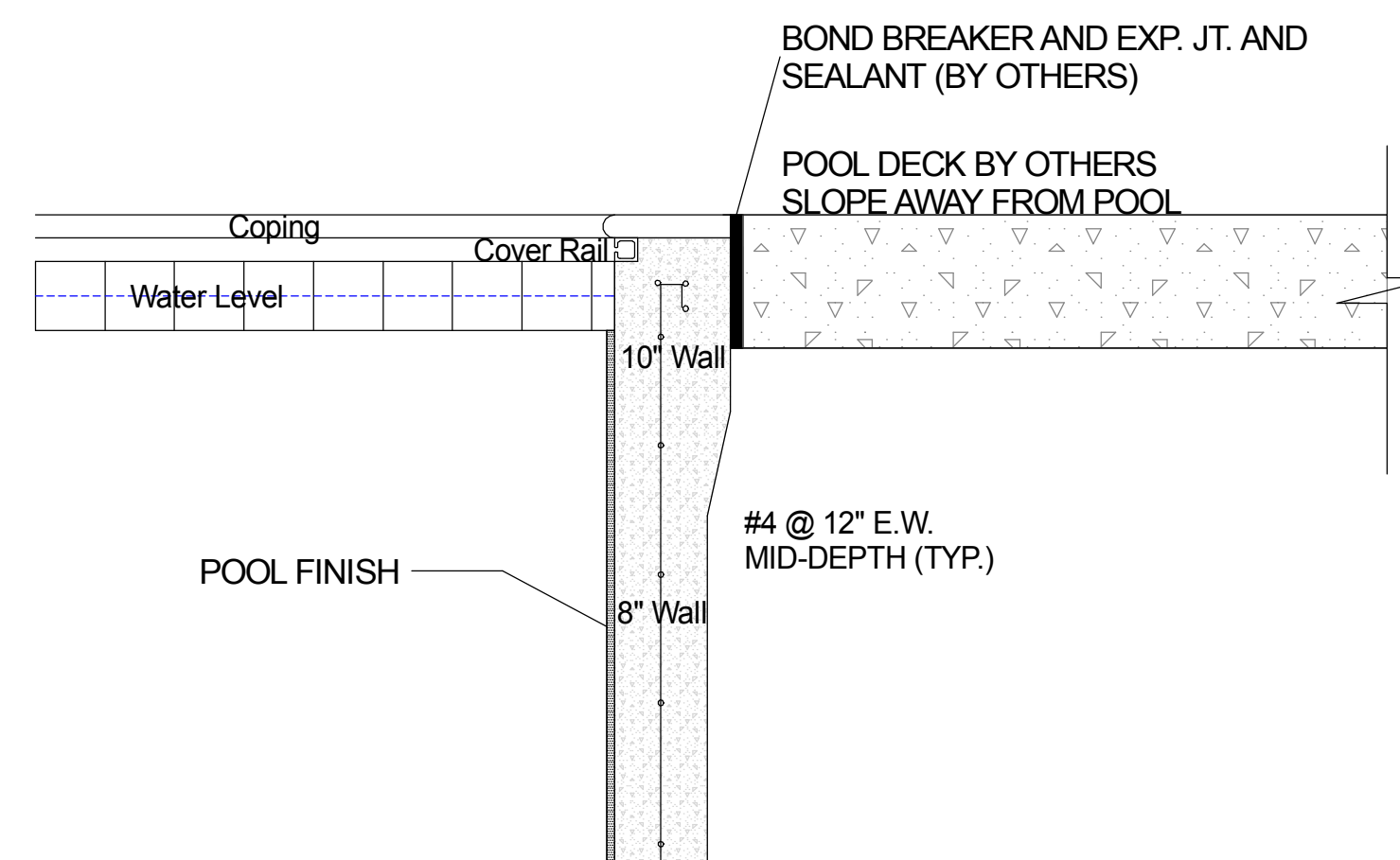
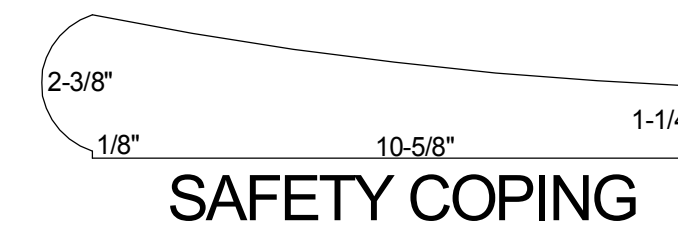
Plan Date:  
09.28.2019

Drawn By: DN

SHEET NO.  
SD8.01



STAIR TREAD AND UNDER WATER EDGE DETAIL | 09  
NO SCALE



TYPICAL TOP OF WALL AND COPING DETAIL | 01  
NO SCALE



MIDWEST CUSTOM POOLS  
600 Lincolh Street  
Lawrence, KS 66044  
P. 785.843.9119  
F. 785.843.6524  
MidwestCustomPools.com

**THE PRINCETON**  
1701 SE OLDHAM PARKWAY  
LEE'S SUMMIT, MO

Plan Date:  
09.28.2019

Drawn By: DN

SHEET NO.  
**SD8.02**