
LAND AND BUSINESS OWNER AUTHORIZATION AND CONSENT

TO: Hilton Displays, Inc.

FROM: Nathan Palmer
1801 Sandy Creek Lane
STE 102
Orlando, FL 32826
npalmer@leadersre.com

RE: Starbucks #63039
150 SW M-150 Hwy
Lee's Summit, MO 64062

I declare and affirm that I am the Business Owner and Owner or Trustee of the real property (land) located at

150 SW MO- Hwy 150, Lee's Summit, MO
(Street Address, City, and State)

And have full authority to authorize

Hilton Displays, Inc.

(Name of person or Company)

and their subcontractors to submit a Permanent Sign Application for the aforementioned real property. I understand that sign construction is subject to Building code and contractor competency requirements as administered by the County Building Inspections Department.

In addition, I hereby give notice to the sign permitting authority that I approve the sign Design Documents as submitted.

I authorize the sign vendor, Hilton Displays, Inc., under contract with Starbucks to make application for and secure the necessary permit(s), remove any existing signs, install the new approved signs and provide wall surface restoration of any resulting visible wall damage.

 Nathan Palmer Owner 9/15/20
Signature Name (Print) Title Date

STARBUCKS COFFEE #63039

Rt 291 & 150

150 SW M-150 Hwy

Lee's Summit MO



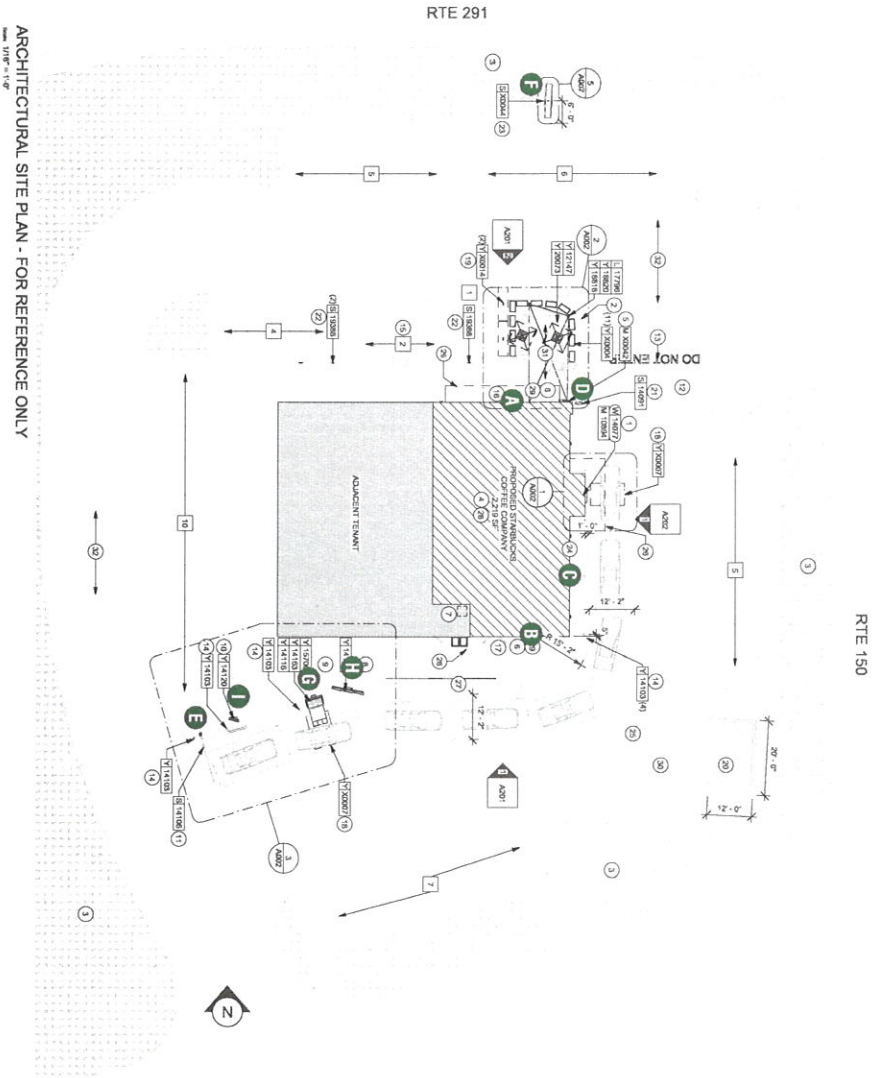
20-50278

HILTONDISPLAYS

125 HILLSIDE DRIVE • GREENVILLE SC 29607
P 800 353 9132 • F 864 242 2204
www.hiltondisplays.com

SITE PLAN

- A** 71" SIREN
- B** 60" SIREN
- C** 20" CHANNEL LETTERS
- D** 30" TY/EO DIRECTIONAL
- E** CLEARANCE BAR
- F** PYLON FACES
- G** DOS ON CANOPY / DCB
- H** MENU BOARD
- I** PRE-MENU BOARD



ARCHITECTURAL SITE PLAN - FOR REFERENCE ONLY

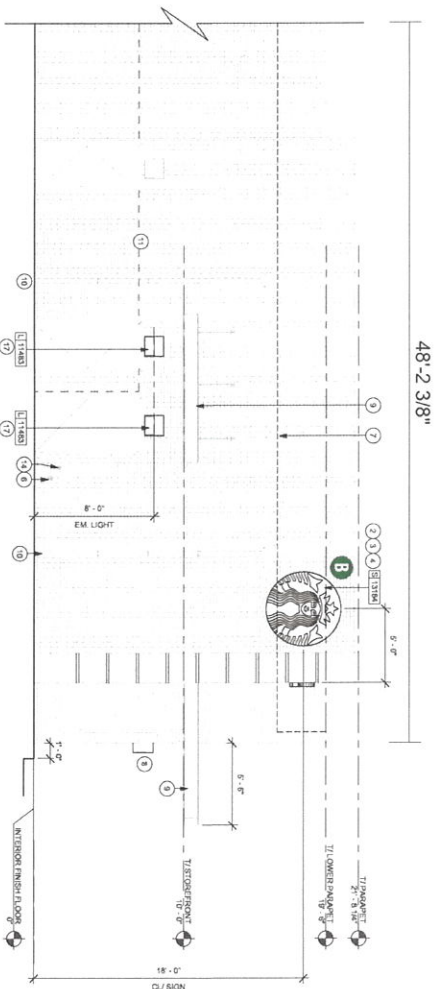
THIS DESIGN IS THE ORIGINAL AND UNPUBLISHED WORK OF HILTON DISPLAYS AND MAY NOT BE REPRODUCED, COPIED, OR EXHIBITED IN ANY MANNER WITHOUT WRITTEN CONSENT FROM AN AUTHORIZED OFFICER OF THE COMPANY. © HILTON DISPLAYS 2019

HILTON DISPLAYS 175 HILLSIDE DRIVE • GREENVILLE, SC 29607 P 800.353.9132 • F 864.242.2204 www.hiltondisplays.com	
QID 20-50278	
JOB NAME	Starbucks 63039
LOCATION	Rt 291 & 150 150 SW M-150 Hwy Lee's Summit MO
CUSTOMER CONTACT	
SALESMAN / PM	Maddie Keller
DESIGNER	Glenn Miller
DWG. DATE	5-22-20
REV. DATE / REVISION	5-28-20 6-23-20 9-09-20 9-11-20 9-15-20
SCALE	Not to Scale
FILE	2020/Starbucks/ Lees Summit MO/20-50278/ SB Lees Summit MO 20-50278
DESIGN SPECIFICATIONS ACCEPTED BY:	
EST. CLIENT	
SUSPENSE LAB	
UNDERWRITERS	
LABORATORIES INC.	
UNDERWRITERS	
LABORATORIES INC.	

ELEVATION

- A 7'1" SIREN
- B 60" SIREN
- C 20" CHANNEL LETTERS
- D 30" TY/EO DIRECTIONAL
- E CLEARANCE BAR
- F PYLON FACES
- G DOS ON CANOPY / DCB
- H MENU BOARD
- I PRE-MENU BOARD

1 SOUTH ELEVATION
Scale: 1/8" = 1' (11X17 Paper)



HILTONDISPLAYS
131 HILSON DRIVE - COLUMBIA, SC 29607
P 803.333.9132 • F 864.242.2204
www.hiltondisplays.com

QID 20-50278

JOB NAME

Starbucks 63039

LOCATION

Rt 291 & 150
150 SW M-150 Hwy
Lees Summit MO

CUSTOMER CONTACT

SALESMAN / PM

Maddie Keller

DESIGNER

Glenn Miller

DWG. DATE

5-22-20

REV. DATE / REVISION

5-26-20

6-23-20

9-09-20

9-11-20

9-15-20

SCALE

Not to Scale

FILE

2020/Starbucks/
Lees Summit MO/20-50278/
SB Lees Summit MO 20-50278

DESIGN SPECIFICATIONS ACCEPTED BY:

EST. CLIENT:

S/S PREP. [Signature]

THE INTENT OF THIS DRAWING IS TO SHOW A CONCEPTUAL REPRESENTATION OF THE PROPOSED SIGNAGE. DUE TO VARIATIONS IN PRINTING DEVICES AND SUBSTRATES, THE FINISHED PRODUCT MAY DIFFER SLIGHTLY FROM DRAWING.



- A 1" SIREN
- B 60" SIREN
- C 20" CHANNEL LETTERS
- D 30" TYPE DIRECTIONAL
- E CLEARANCE BAR
- F PYLON FACES
- G DOS ON CANOPY / DCB
- H MENU BOARD
- I PRE-MENU BOARD



HILTON DISPLAYS
125 HILLSIDE DRIVE • GREENVILLE SC 29607
P 800 353 9132 • F 804 242 2204
www.hiltondisplays.com

JOB NAME
Starbucks 63039

LOCATION

Rt 291 & 150
150 SW M-150 Hwy
Lee's Summit MO

CUSTOMER CONTACT

SALESMAN / PM

DESIGNER

Glenn Miller

DWG. DATE

5-22-20

REV. DATE / REVISION

5-26-20

9-09-20

9-15-20

SCALE

Not to Scale

FILE

2020/Starbucks/
Lees Summit MO/20-50278/
SB Lees Summit MO 20-50278

DESIGN SPECIFICATIONS ACCEPTED BY:

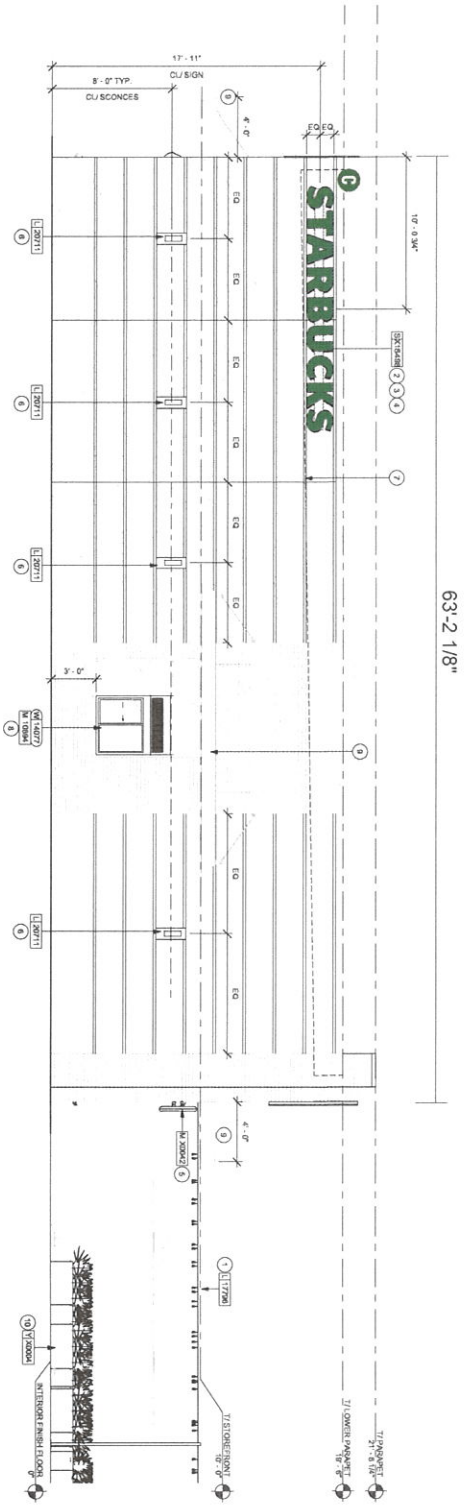
EST:	CLIENT:
------	---------

SLS/PM: LAYDLOKD:	
------------------------------	--



ELEVATION

- A 7'1" SIREN
- B 60" SIREN
- C 20" CHANNEL LETTERS
- D 30" TY/EO DIRECTIONAL
- E CLEARANCE BAR
- F PYLON FACES
- G DOS ON CANOPY / DCB
- H MENU BOARD
- I PRE-MENU BOARD



1 EAST ELEVATION
Scale: 1/8" = 1' (11x17 Paper)

THIS DESIGN IS THE ORIGINAL AND UNPUBLISHED WORK OF HILTON DISPLAYS AND MAY NOT BE REPRODUCED, COPIED, OR EXHIBITED IN ANY FASHION WITHOUT WRITTEN CONSENT FROM AN AUTHORIZED OFFICER OF THE COMPANY. © HILTON DISPLAYS 2019

HILTON DISPLAYS
1325 N. L. S. DR. - SUITE 111, S.C. 29607
P: 803.333.9132 • F: 864.242.2204
www.hiltondisplays.com

QID 20-50278

JOB NAME

Starbucks 63039

LOCATION

Rt 291 & 150
150 SW M-150 Hwy
Lees Summit MO

CUSTOMER CONTACT

SALESMAN / PM

Maddie Keller

DESIGNER

Glenn Miller

DWG. DATE

5-22-20

REV. DATE / REVISION

5-28-20

6-23-20

9-09-20

9-11-20

9-15-20

SCALE

Not to Scale

FILE

2020/Starbucks/

Lees Summit MO/20-50278/

SB Lees Summit MO 20-50278

DESIGN SPECIFICATIONS ACCEPTED BY:

EST. CLIENT:

S/S/P/E: [Signature]



Qty. 1 SBC-S13182-SL

A



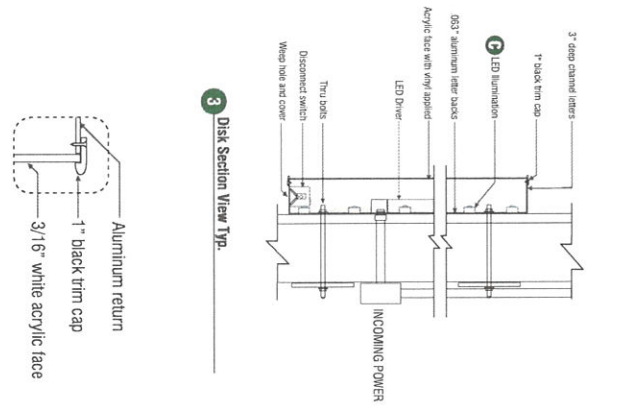
4 Side View



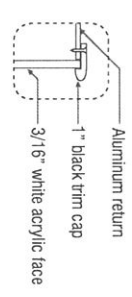
A Single raced internally illuminated wall mount logo disk. Cabinet to be 3" deep, fabricated aluminum returns and back. Paint cabinet black. Faces to be 3/16" white Plex with 1" black trimcap

- 6500K white LED's

Disk 71in (1803mm) S/F Illuminated Flush Mounted Wall Sign EVOLVED			
Size	Sq.Ft.	Sq.M.	Volts
71" (1803mm)	27.49	2.55	120/277



3 Disk Section View Type



125 HILLSIDE DRIVE • GREENVILLE SC 29607
P 800 353 9132 • F 864 242 2204
www.hillanddisplays.com

JOB NAME

Starbucks 63039

LOCATION

Rt 291 & 150
150 SW M-150 Hwy
Lee's Summit MO

CUSTOMER CONTACT

SALESMAN / PM

Maddie Keller

Glenn Miller

DWG. DATE

5-22-20

REV. DATE / REVISION

5-26-20
6-23-20

9-09-20

9-11-20
9-15-20

SCALE

Not to Scale

FILE

2020/Starbucks/
Lees Summit MO/20-50278/
SB Lees Summit MO 20-50278

DESIGN SPECIFICATIONS ACCEPTED BY:

EST:	CLIENT:
------	---------

SLS/PM: ~~LANDLORD:~~

THE INTENT OF THIS DRAWING IS TO SHOW A CONCEPTUAL REPRESENTATION OF THE PROPOSED SIGNAGE. DUE TO VARIATIONS IN PRINTING DEVICES AND SUBSTRATES, THE FINISHED PRODUCT MAY DIFFER SLIGHTLY FROM DRAWING.



60" ILLUMINATED SIREN

Qty: 1
SBC-S13164-SL



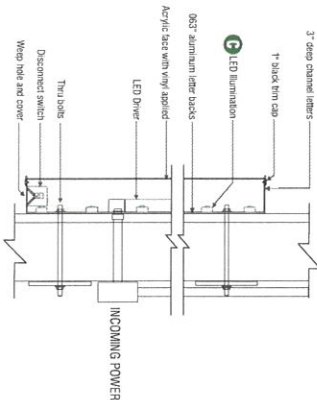
1 Front View
3/4" = 1'-0" (11x17 Paper)

SPECIFICATIONS:

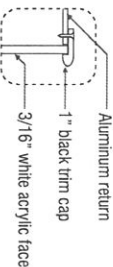
- A Single faced internally illuminated wall mount logo disk. Cabinet to be 3" deep, fabricated aluminum returns and back. Paint cabinet black. Faces to be 3/16" white Plex with 1" black trimcap
- B Graphics of logo to be 1st surface 3M Translucent Scotchcal vinyl- Holly Green #3630-76. Siren to show thru White.
- C Internally illuminated logo disk with Sloan Prism Enlighth 6500K white LEDs



2 Side View



3 Disk Section View Typ.



4 Enlarged Detail

COLOR LEGEND	
PMS/PANT	VINYL
PMS 3425 C	3M 3630-76
RAL 7021M	3M 3630-22
PMS WHITE	3M 3630-20/7225-10
PMS 369 C	NA
REFL. WHITE	3M 680-10

Wall Mount EVOLVED			
Size	Sq.Ft.	Sq.M.	Voits
60" (1524mm)	19.82	1.82	120/277

THIS DESIGN IS THE ORIGINAL AND UNPUBLISHED WORK OF HILTON DISPLAYS AND MAY NOT BE REPRODUCED, COPIED, OR EXHIBITED IN ANY MANNER WITHOUT WRITTEN CONSENT FROM AN AUTHORIZED OFFICER OF THE COMPANY. © HILTON DISPLAYS 2015

HILTON DISPLAYS
175 HILLSIDE DRIVE • GREENVILLE SC 29607
P 800 353 9133 • F 864 242 2204
www.hiltondisplays.com

QID 20-50278

JOB NAME

Starbucks 63039

LOCATION

Rt 291 & 150
150 SW M-150 Hwy
Lee's Summit MO

CUSTOMER CONTACT

SALESMAN / PM

Maddie Keller

DESIGNER

Glenn Miller

DWG. DATE

5-22-20

REV. DATE / REVISION

5-26-20

6-23-20

9-09-20

9-11-20

9-15-20

SCALE

Not to Scale

FILE

2020/Starbucks/
Lees Summit MO/20-50278/
SB Lees Summit MO 20-50278

DESIGN SPECIFICATIONS ACCEPTED BY:

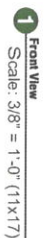
EST. CLIENT:

SLS/PL: LAYFORD

Underwriters Laboratories Inc.
UL
DAVE
NET X

SBC-SDS-RW27-20-G

QTY. 1



26.84 SF

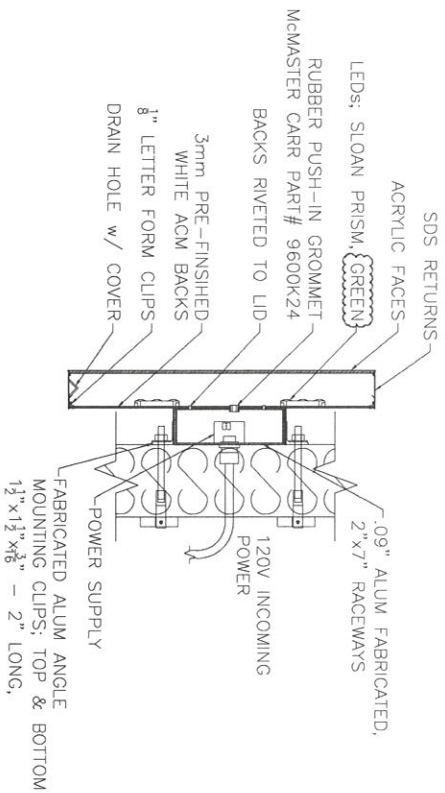


SPECIFICATIONS:

- 4" deep returns painted Starbucks Green
- Trimless plastic face with translucent vinyl
- Illuminated with Sloan LEDs

NOTE:

- Exterior letters will have drain holes and screws in the returns



COLOR LEGEND		
PMS/PANT	VINYL	
PMS 3425 C	3M 3630-76	
RAL 7021 M	3M 3630-22	
PMS WHITE	3M 3630-20/ 7775-10 TRANSLUCENT OPaque	
PMS 369 C	NA	
REFL. WHITE	3M 660-10	

HILTONDISPLAYS
125 HILLSIDE DRIVE • GREENVILLE SC 29607
P 800 353 9132 • F 864 242 2204
www.hiltondisplays.com

QID 20-50278

JOB NAME

Starbucks 63039

LOCATION

Rt 291 & 150

Lee's Summit MO

CUSTOMER CONTACT

SALESMAN / PM

Maddie Keller

DESIGNER

Glenn Miller

DWG. DATE

5-22-20

REV. DATE / REVISION

5-26-20
6-23-209-09-20
9-11-20

9-15-20

SCALE

Not to Scale

FILE

2020/Starbucks/
Lees Summit MO/20-50278/
SB Lees Summit MO 20-50278

DESIGN SPECIFICATIONS ACCEPTED BY:

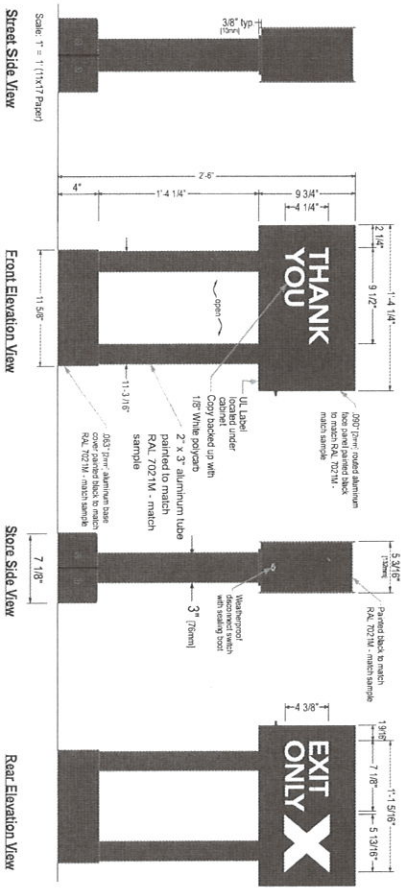
CLIENT:

ELSPM: ~~LANDLOD.~~

THE INTENT OF THIS DRAWING IS TO SHOW A CONCEPTUAL REPRESENTATION OF THE PROPOSED SIGNAGE. DUE TO VARIATIONS IN PRINTING DEVICES AND SUBSTRATES, THE FINISHED PRODUCT MAY DIFFER SLIGHTLY FROM DRAWING.



30" ILLUMINATED DIRECTIONAL TY / EO
Qty: 1
SBC-AD3016-SL



COLOR LEGEND	
PMS/PANTONE	VINYL
PMS 3425 C	3M 3630-76
PMS 369 C	3M 3630-22
PMS 369 C	3M 3630-20/7725-10
PMS 369 C	3M 369 C
PMS 369 C	3M 680-10

Sign Specifications:

Fabricated .090" Aluminum cabinet painted black to match RAL 7021 as shown.
Directional copy and graphic routed and backed up with 1/8" white polycarbonate.
All polycarbonate face elements (beo attached to interior face panels with welded studs.
All interior portions of sign cabinet painted white.
Graphic elements illuminated with Sloan Prism Enlign LEDS. LEDS mounted on internal baffle with self contained LED power supply. All components accessible through face of cabinet.

Support:

Support structure to be welded aluminum tube and plate construction painted black to match RAL 7021 Plate to be constructed to be retro-fittable to existing sign foundations. All foundations new and used to be analyzed for suitability and must meet all local city or state code regulations.

HILTONDISPLAYS
1735 HILTSIDE DRIVE • GREENVILLE SC 29607
P 800.353.9132 • F 864.242.2204
www.hiltondisplays.com

QID 20-50278

JOB NAME

Starbucks 63039

LOCATION

Rt 291 & 150
150 SW M-150 Hwy
Lees Summit MO

CUSTOMER CONTACT

SALESMAN / PM

Maddie Keller

DESIGNER

Glenn Miller

DWG. DATE

5-22-20

REV. DATE / REVISION

5-26-20
6-23-20
9-09-20
9-11-20
9-15-20

SCALE

Not to Scale

FILE

2020/Starbucks/
Lees Summit MO/20-50278/
SB Lees Summit MO 20-50278

DESIGN SPECIFICATIONS ACCEPTED BY:

EST. CLIENT:

SLS/PML: LAYDOR

Underwriters Laboratories Inc.
UL
LABORATORIES INC.
UL
LABORATORIES INC.

—



Diagram of a 1/2 inch square steel plate with a 1/2 inch square hole. Dimensions are given in inches. A note specifies: "ALL TOP CORNERS ROUNDED TO MATCH BLACK PAINT WITH 1/8 IN X 1/8 IN X 1/8 IN RADIUS". A callout box contains the text: "USE SAME CONTOUR TO ALL CORNERS OF CRACKS AND OTHER DAMAGE TO FILL WITH CONCRETE".



be analyzed for suitability and must meet all local city or state codes, regulations.

TENANT PANELS

SBC-PART #

Qty. 2 (1 ea)

F

SURVEY REQUIRED



FRONT VIEWS

SCALE: NTS

SPECIFICATIONS:

- A Faces to be 3/16" (6mm) white acrylic.
- B Graphics of logo to be 1st surface 3M translucent Scotchlite vinyl. Black 3M 3630-22 and Holly Green #3630-76

COLOR LEGEND	
PMS/PANT	VINYL
PMS 3425 C	3M 3630-76
PMS 3630-22	3M 3630-22
PMS 3630-76	3M 3630-76
PMS 3630-77	3M 3630-77
PMS 3630-78	3M 3630-78
PMS 3630-79	3M 3630-79
PMS 3630-80	3M 3630-80
PMS 3630-81	3M 3630-81
PMS 3630-82	3M 3630-82
PMS 3630-83	3M 3630-83
PMS 3630-84	3M 3630-84
PMS 3630-85	3M 3630-85
PMS 3630-86	3M 3630-86
PMS 3630-87	3M 3630-87
PMS 3630-88	3M 3630-88
PMS 3630-89	3M 3630-89
PMS 3630-90	3M 3630-90
PMS 3630-91	3M 3630-91
PMS 3630-92	3M 3630-92
PMS 3630-93	3M 3630-93
PMS 3630-94	3M 3630-94
PMS 3630-95	3M 3630-95
PMS 3630-96	3M 3630-96
PMS 3630-97	3M 3630-97
PMS 3630-98	3M 3630-98
PMS 3630-99	3M 3630-99
PMS 3630-100	3M 3630-100
REFL. WHITE	3M 680-10

TENANT
PANELS Qty. 2



THIS DESIGN IS THE ORIGINAL AND UNPUBLISHED WORK OF HILTON DISPLAYS AND MAY NOT BE REPRODUCED, COPIED, OR EXHIBITED IN ANY MANNER WITHOUT WRITTEN CONSENT FROM AN AUTHORIZED OFFICER OF THE COMPANY. © HILTON DISPLAYS 2015

HILTON DISPLAYS
135 HILLSIDE DRIVE • GREENVILLE, SC 29607
P 803.353.9132 • F 864.243.2704
www.hiltondisplays.com

QID 20-50278

JOB NAME

Starbucks 63039

LOCATION

Rt 291 & 150
150 SW M-150 Hwy
Lee's Summit MO

CUSTOMER CONTACT

SALESMAN / PM

Maddie Keller

DESIGNER

Glenn Miller

DWG. DATE

5-22-20

REV. DATE / REVISION

5-26-20

6-23-20

9-09-20

9-11-20

9-15-20

SCALE

Not to Scale

FILE

2020/Starbucks/
Lees Summit MO/20-50278/
SB Lees Summit MO 20-50278

DESIGN SPECIFICATIONS ACCEPTED BY:

EST. CLIENT:

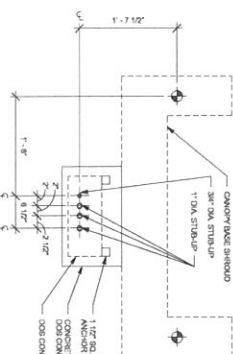
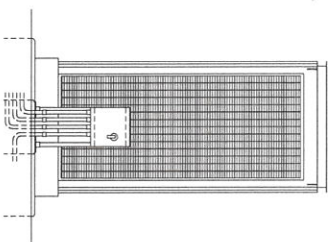
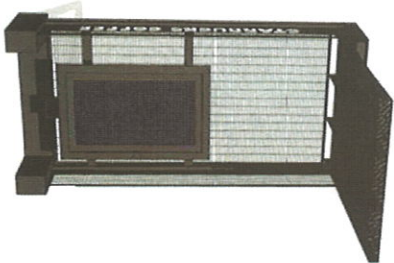
SUSPENSE LABORATORY

Underwriters
Laboratories Inc.
GWT
WET
X

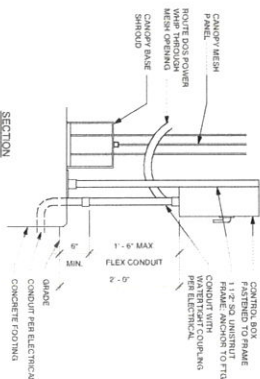
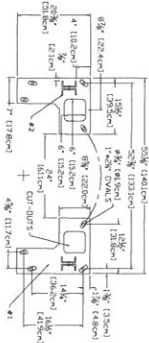
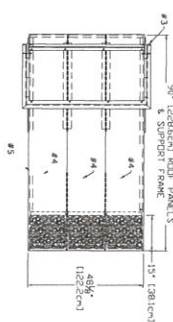
Qty. 1

[illegible]

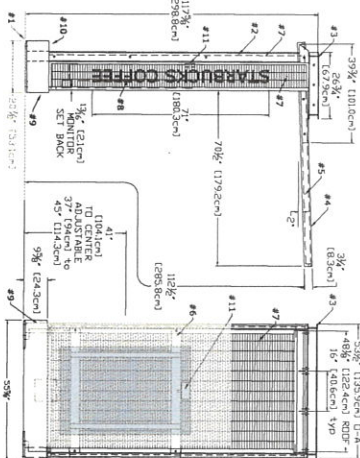
Scale: 1/2" = 1' (11x17 paper)



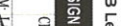

Scale: 1/2" = 1' (11x17 paper)



Scale: 1/2" = 1' (11x17 paper)

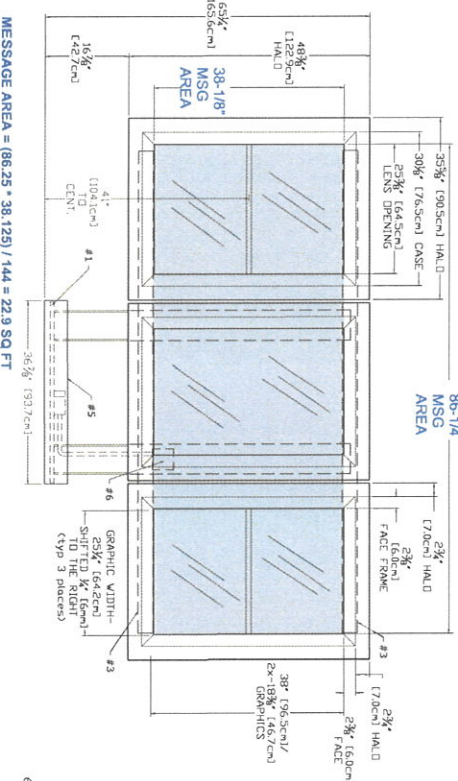
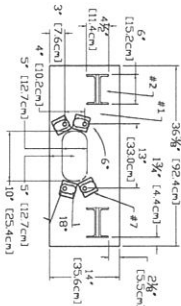
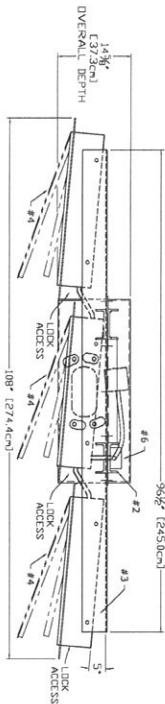


- #1. 20" x 16" WISDOM STEEL BASE PLATES
- #2. 1" OVAL WISDOM SHIM/POSITION
- #3. TWO (2) "BACK TO BACK" C467 25
- #4. (4"x12"x1/2") STEEL RODS
- #5. CEXAL-368 CHAIN HOIST RODS
- #6. THREE (3) ALUMINUM ROPE PANELS
- #7. 15' OF DARNED PATTERN
- #8. WEDGED ALUMINUM ROPE PANELS
- #9. WEDGED ALUMINUM ROPE PANELS
- #10. WEDGED ALUMINUM WATER TIGHT
- #11. WEDGED ALUMINUM BASE COVERS
- #12. WEDGED ALUMINUM WATER TIGHT
- #13. WEDGED ALUMINUM WATER TIGHT
- #14. WEDGED ALUMINUM WATER TIGHT
- #15. WEDGED ALUMINUM WATER TIGHT
- #16. WEDGED ALUMINUM WATER TIGHT
- #17. WEDGED ALUMINUM WATER TIGHT
- #18. WEDGED ALUMINUM WATER TIGHT
- #19. WEDGED ALUMINUM WATER TIGHT
- #20. WEDGED ALUMINUM WATER TIGHT
- #21. WEDGED ALUMINUM WATER TIGHT
- #22. WEDGED ALUMINUM WATER TIGHT
- #23. WEDGED ALUMINUM WATER TIGHT
- #24. WEDGED ALUMINUM WATER TIGHT
- #25. WEDGED ALUMINUM WATER TIGHT
- #26. WEDGED ALUMINUM WATER TIGHT
- #27. WEDGED ALUMINUM WATER TIGHT
- #28. WEDGED ALUMINUM WATER TIGHT
- #29. WEDGED ALUMINUM WATER TIGHT
- #30. WEDGED ALUMINUM WATER TIGHT
- #31. WEDGED ALUMINUM WATER TIGHT
- #32. WEDGED ALUMINUM WATER TIGHT
- #33. WEDGED ALUMINUM WATER TIGHT
- #34. WEDGED ALUMINUM WATER TIGHT
- #35. WEDGED ALUMINUM WATER TIGHT
- #36. WEDGED ALUMINUM WATER TIGHT
- #37. WEDGED ALUMINUM WATER TIGHT
- #38. WEDGED ALUMINUM WATER TIGHT
- #39. WEDGED ALUMINUM WATER TIGHT
- #40. WEDGED ALUMINUM WATER TIGHT
- #41. WEDGED ALUMINUM WATER TIGHT
- #42. WEDGED ALUMINUM WATER TIGHT
- #43. WEDGED ALUMINUM WATER TIGHT
- #44. WEDGED ALUMINUM WATER TIGHT
- #45. WEDGED ALUMINUM WATER TIGHT
- #46. WEDGED ALUMINUM WATER TIGHT
- #47. WEDGED ALUMINUM WATER TIGHT
- #48. WEDGED ALUMINUM WATER TIGHT
- #49. WEDGED ALUMINUM WATER TIGHT
- #50. WEDGED ALUMINUM WATER TIGHT
- #51. WEDGED ALUMINUM WATER TIGHT
- #52. WEDGED ALUMINUM WATER TIGHT
- #53. WEDGED ALUMINUM WATER TIGHT
- #54. WEDGED ALUMINUM WATER TIGHT
- #55. WEDGED ALUMINUM WATER TIGHT
- #56. WEDGED ALUMINUM WATER TIGHT
- #57. WEDGED ALUMINUM WATER TIGHT
- #58. WEDGED ALUMINUM WATER TIGHT
- #59. WEDGED ALUMINUM WATER TIGHT
- #60. WEDGED ALUMINUM WATER TIGHT
- #61. WEDGED ALUMINUM WATER TIGHT
- #62. WEDGED ALUMINUM WATER TIGHT
- #63. WEDGED ALUMINUM WATER TIGHT
- #64. WEDGED ALUMINUM WATER TIGHT
- #65. WEDGED ALUMINUM WATER TIGHT
- #66. WEDGED ALUMINUM WATER TIGHT
- #67. WEDGED ALUMINUM WATER TIGHT
- #68. WEDGED ALUMINUM WATER TIGHT
- #69. WEDGED ALUMINUM WATER TIGHT
- #70. WEDGED ALUMINUM WATER TIGHT
- #71. WEDGED ALUMINUM WATER TIGHT
- #72. WEDGED ALUMINUM WATER TIGHT
- #73. WEDGED ALUMINUM WATER TIGHT
- #74. WEDGED ALUMINUM WATER TIGHT
- #75. WEDGED ALUMINUM WATER TIGHT
- #76. WEDGED ALUMINUM WATER TIGHT
- #77. WEDGED ALUMINUM WATER TIGHT
- #78. WEDGED ALUMINUM WATER TIGHT
- #79. WEDGED ALUMINUM WATER TIGHT
- #80. WEDGED ALUMINUM WATER TIGHT
- #81. WEDGED ALUMINUM WATER TIGHT
- #82. WEDGED ALUMINUM WATER TIGHT
- #83. WEDGED ALUMINUM WATER TIGHT
- #84. WEDGED ALUMINUM WATER TIGHT
- #85. WEDGED ALUMINUM WATER TIGHT
- #86. WEDGED ALUMINUM WATER TIGHT
- #87. WEDGED ALUMINUM WATER TIGHT
- #88. WEDGED ALUMINUM WATER TIGHT
- #89. WEDGED ALUMINUM WATER TIGHT
- #90. WEDGED ALUMINUM WATER TIGHT
- #91. WEDGED ALUMINUM WATER TIGHT
- #92. WEDGED ALUMINUM WATER TIGHT
- #93. WEDGED ALUMINUM WATER TIGHT
- #94. WEDGED ALUMINUM WATER TIGHT
- #95. WEDGED ALUMINUM WATER TIGHT
- #96. WEDGED ALUMINUM WATER TIGHT
- #97. WEDGED ALUMINUM WATER TIGHT
- #98. WEDGED ALUMINUM WATER TIGHT
- #99. WEDGED ALUMINUM WATER TIGHT
- #100. WEDGED ALUMINUM WATER TIGHT

HILTON DISPLAYS 1325 HILLSIDE DRIVE • GREENVILLE, SC 29607 P 803 353 9133 • F 864 242 2004 www.hiltondisplays.com	
QID 20-50278	
JOB NAME Starbucks 63039	
LOCATION Rt 291 & 150 150 SW M-150 Hwy Lees Summit MO	
CUSTOMER CONTACT	
SALESMAN / PM Maddie Keiler	
DESIGNER Glenn Miller	
DWG. DATE 5-22-20	
REV. DATE / REVISION	
5-26-20	
6-23-20	
9-09-20	
9-11-20	
9-15-20	
SCALE	
Not to Scale	
FILE	
2020/Starbucks/ Lees Summit MO/20-50278/ SB Lees Summit MO 20-50278	
DESIGN SPECIFICATIONS ACCEPTED BY:	
EST. CLIENT:	S.P.M. LAWYER 
THE INTENT OF THIS DRAWING IS TO SHOW A CONCEPTUAL REPRESENTATION OF THE PROPOSED SIGNAGE. THE TO SCALE DRAWING IS NOT A CONTRACT. THE CONTRACTOR SHALL FURNISH PRODUCT MAY DIFFER SLIGHTLY FROM DRAWING.	
<div>  Underwriters Laboratories Inc. <div> RAMP WET X </div> </div>	

5-PANEL MENU - FREESTANDING

Qty: 1



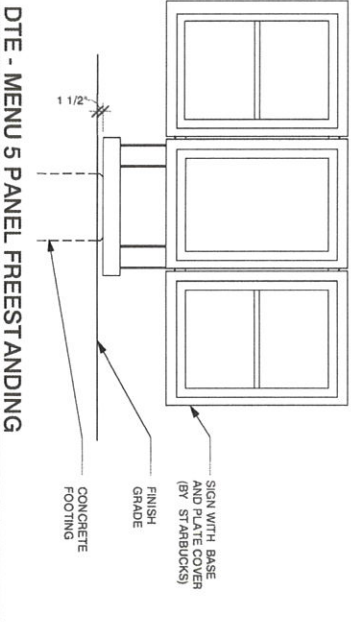
- #1 - 1/2" (19mm) STEEL BASE PLATE W/ 18deg HOLES PATTERN ROTATED FOR 15deg THRU 34deg POSITION
#2 - CGX10.5 (6"x2"x1/2") STEEL POST (2x)
#3 - 5"x3"x2" STEEL SUPPORT ANGLES (2x) (BOLTED TO WELDED X STEEL CROSSBARS)
#4 - 1"x1"x1" (25x25x25) ALUMINUM ANGLE (2x)
ONE FULL AND TWO SPLIT PANEL LIGHTBOXES
ONE - 25x1/2"x38" AND FOUR 25x1/2"x18" GRAPHICS
ALL GRAPHIC ASSEMBLIES SHIFTED 1/4" TO RIGHT
#5 - WELDED ALUMINUM BASE COVER
#6 - WATER-TIGHT BOX W/ SWITCH & SENSOR, BELOW BASE COVER, 120 WATT, 0.90AFC
#7 - 8 BASE WASHERS, 1/2" THICK
#8 - TWO SIDE MOUNT LOCKS PER MENUBOARD RETAIN EXISTING KEY #E3-26-819-15

MESSAGE AREA = (86.25" x 38.125") / 144" = 22.9 SQ FT
DTE - MENU 5 PANEL FREESTANDING
Scale: 1/2" = 1' (11x17 paper)



DTE - MENU 5 PANEL FREESTANDING

Scale: 3/8" = 1' (11x17 paper)



THIS DESIGN IS THE ORIGINAL AND UNPUBLISHED WORK OF HALTON DISPLAYS AND MAY NOT BE REPRODUCED, COPIED, OR EXHIBITED IN ANY FASHION WITHOUT WRITTEN CONSENT FROM AN AUTHORIZED OFFICER OF THE COMPANY. © HALTON DISPLAYS 2015

HILTON DISPLAYS

1251 HILTON DRIVE - GLENDALE, SC 29047
P 803.535.9132 • F 864.242.2204
www.hiltondisplays.com

QID 20-50278

JOB NAME

Starbucks 63039

LOCATION

Rt 291 & 150
150 SW M-150 Hwy
Lees Summit MO

CUSTOMER CONTACT

SALESMAN / PM

Maddie Keller

DESIGNER

Glenn Miller

DWG. DATE

5-22-20

REV DATE / REVISION

5-28-20

6-23-20

9-09-20

9-11-20

9-15-20

SCALE

Not to Scale

FILE

2020/Starbucks/
Lees Summit MO/20-50278/
SB Lees Summit MO 20-50278

DESIGN SPECIFICATIONS ACCEPTED BY:

EST. CLIENT:

SUPPLIER:

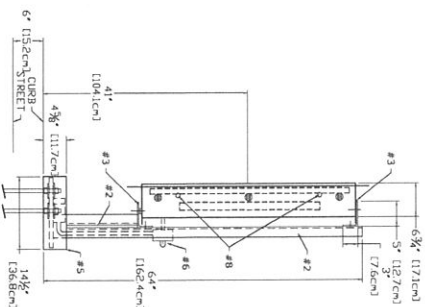
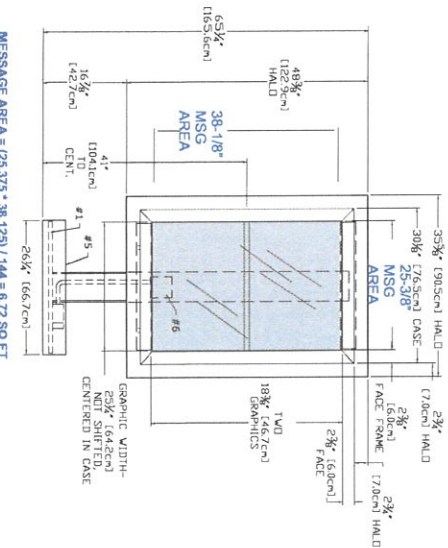
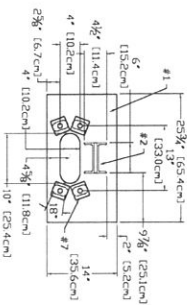
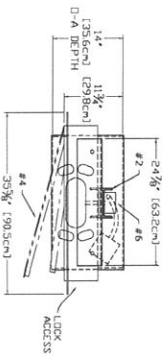
THE INTENT OF THIS DRAWING IS TO SHOW A CONCEPTUAL REPRESENTATION OF THE PROPOSED SIGNAGE. DUE TO VARIATIONS IN FINISHING DEVICES AND SUBSTITUTES, THE FINISHED PRODUCT MAY DIFFER SLIGHTLY FROM DRAWING.



PRE-MENU BOARD - FREESTANDING

Qty: 1

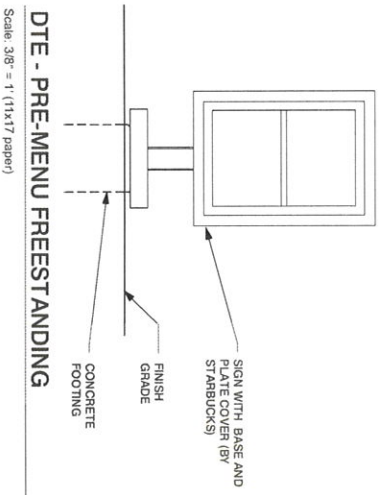
1



- #1 - 3/8" (19mm) STEEL BASE PLATE W/ 18deg HOLES PATTERN LEFT SQUARE / SYMMETRICAL
- #2 - 6x10.5 (6"x2"x6") STEEL POST (1x)
- #3 - 5"x3"x3/4" STEEL SUPPORT ANGLES (2x) (WELDED TO STEEL POST)
- #4 - EXTRUDED ALUMINUM MENU BOARD (1x)
- #5 - 3/8" (19mm) CONCRETE BASE PLATE W/ 18deg HOLES PATTERN LEFT SQUARE / SYMMETRICAL
- #6 - WELDED ALUMINUM BASE COVER
- #7 - WATER-TIGHT BOX W/ SWITCHES & SENSOR, RIDGID CONDUIT RUN TO SECOND EXT BOX BELOW BASE COVER, 120 WATT, 0.30A/c
- #8 - 8 BASE WASHERS, 1/4" THICK
- #9 - TWO SIDE MOUNT LOCKS, RETAIN EXISTING KEY #E3-26-819-15

DTE - PRE-MENU FREESTANDING

Scale: 1/2" = 1' (11x17 paper)



Scale: 3/8" = 1' (11x17 paper)

THIS DESIGN IS THE ORIGINAL AND UNPUBLISHED WORK OF HILTON DISPLAYS AND MUST NOT BE REPRODUCED, COPIED, OR EXHIBITED IN ANY FASHION WITHOUT WRITTEN CONSENT FROM AN AUTHORIZED OFFICER OF THE COMPANY. © HILTON DISPLAYS 2015

HILTON DISPLAYS
135 HILLSIDE DRIVE • GREENVILLE SC 29607
P 800 333 9132 • F 864 242 2004
www.hiltondisplay.com

QID 20-50278

JOB NAME

Starbucks 63039

LOCATION

Rt 291 & 150
150 SW M-150 Hwy
Lees Summit MO

CUSTOMER CONTACT

SALESMAN / PM

Maddie Keller

DESIGNER

Glenn Miller

DWG. DATE

5-22-20

REV. DATE / REVISION

5-26-20

6-23-20

9-09-20

9-11-20

9-15-20

SCALE

Not to Scale

FILE

2020/Starbucks/
Lees Summit MO/20-50278/
SB Lees Summit MO 20-50278

DESIGN SPECIFICATIONS ACCEPTED BY:

EST. CLIENT:

S.S.P.C. LARFORD

THE INTENT OF THIS DRAWING IS TO SHOW A CONCEPTUAL REPRESENTATION OF THE PROPOSED SIGNAGE. DUE TO VARIATIONS IN PRINTING DEVICES AND SYSTEMS, THE PRESENTED DRAWING MAY DIFFER FROM THE FINAL PRINTING.

Underwriters Laboratories Inc.
UL
WET