



HD ENGINEERING & DESIGN, INC.

SOLUTIONS FOR ALL OF YOUR ENGINEERING & DESIGN NEEDS

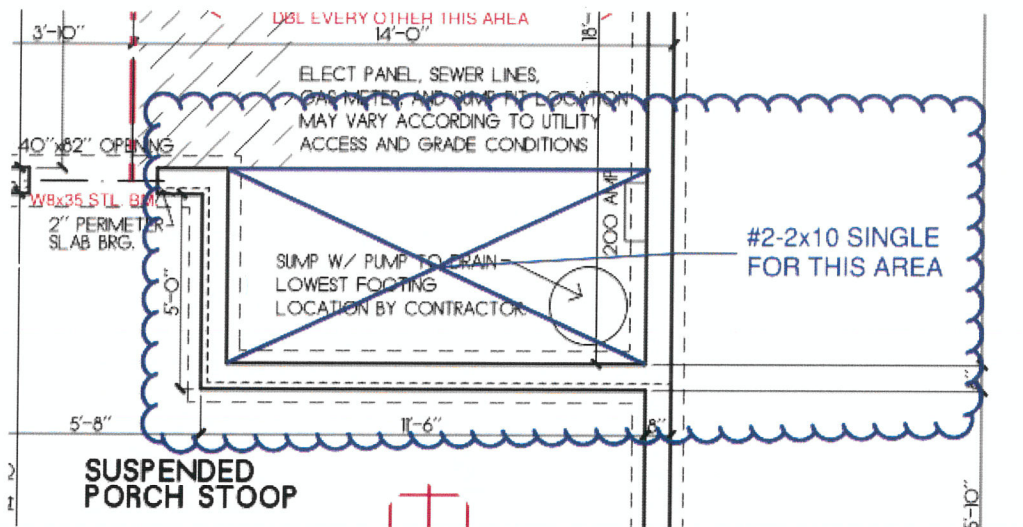
September 17, 2020

SAB Homes, Inc.
PO Box 942
Lee's Summit, MO 640630942

Re: 161 NW Carson Drive (2020-1648)

Our firm has been asked to address a framing inspection item for the home being built at the location listed above. At the time of inspection the home was in a rough framed state.

Floor Joist at Front Right Framing Alternate



This report has been prepared for the exclusive use of our client for specific application to the project discussed and has been prepared in accordance with generally accepted engineering practices. No warranties, either express or implied, are intended or made.

We appreciate the opportunity to be of service to you on this project. If you have any questions regarding this report, please contact us.

Very truly yours,
HD ENGINEERING & DESIGN, INC.

John Hulse, Principal

