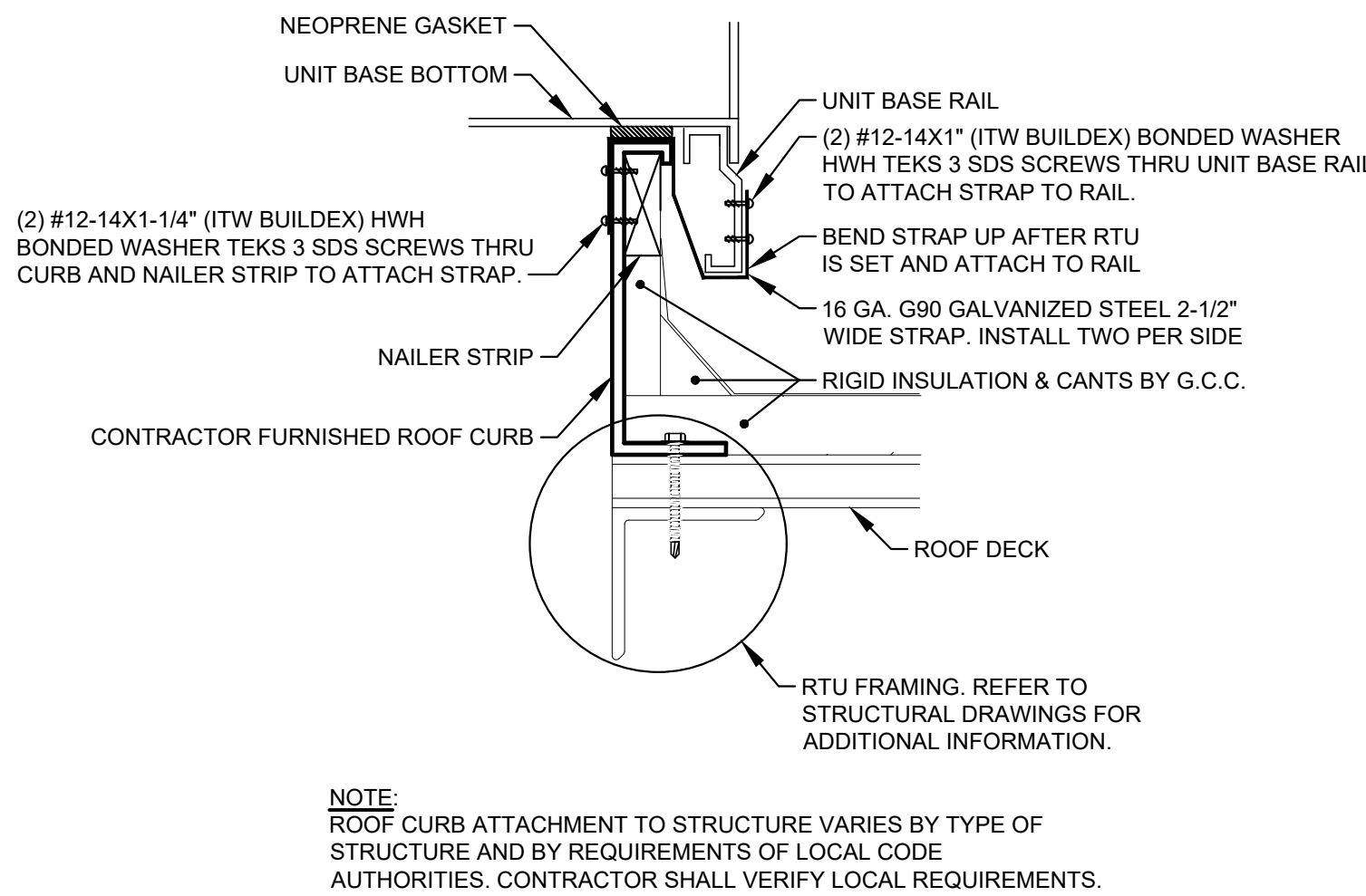
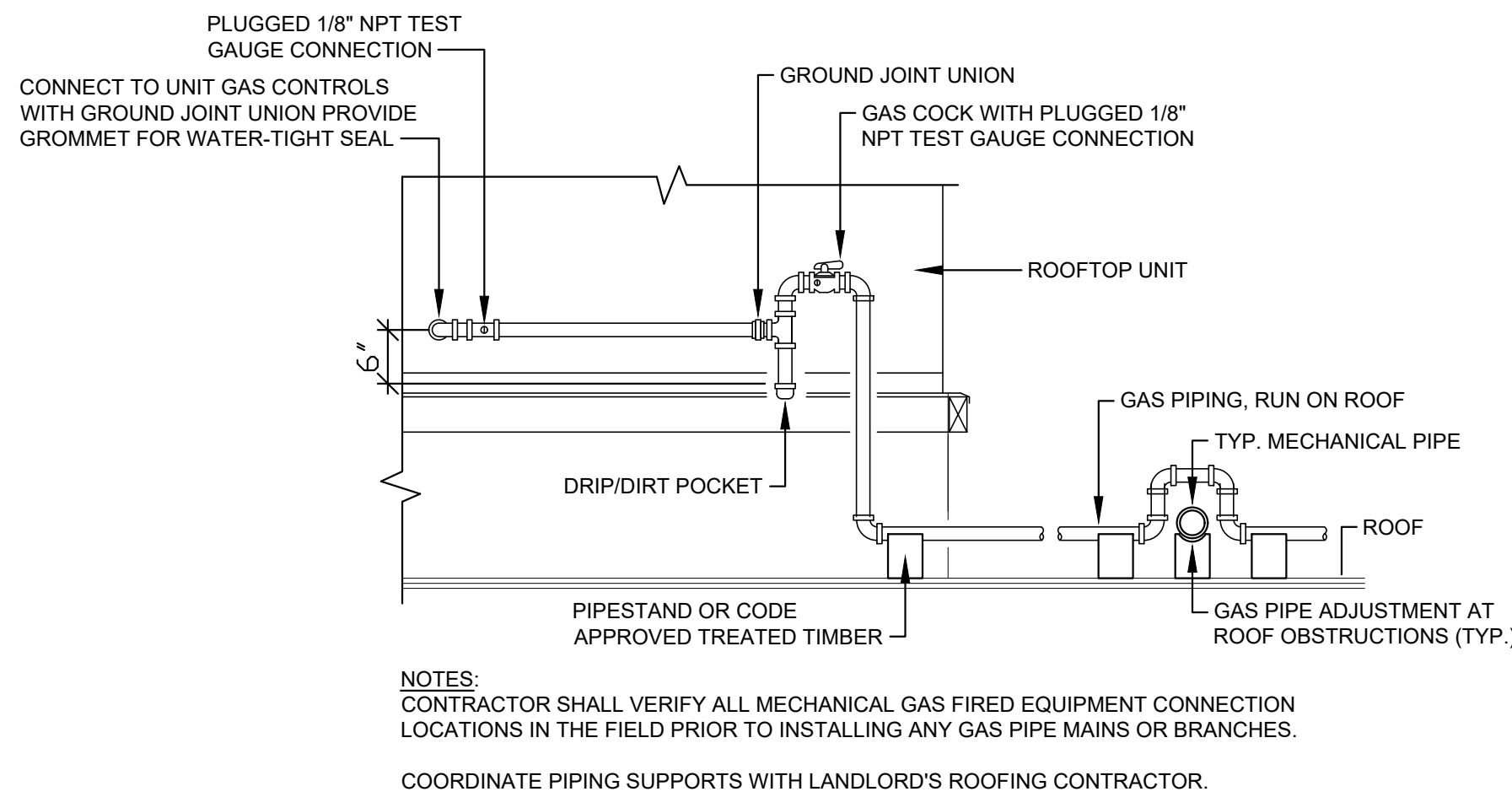


1 TYPICAL ROOFTOP UNIT INSTALLATION
MP2.0 SCALE NOT TO SCALE



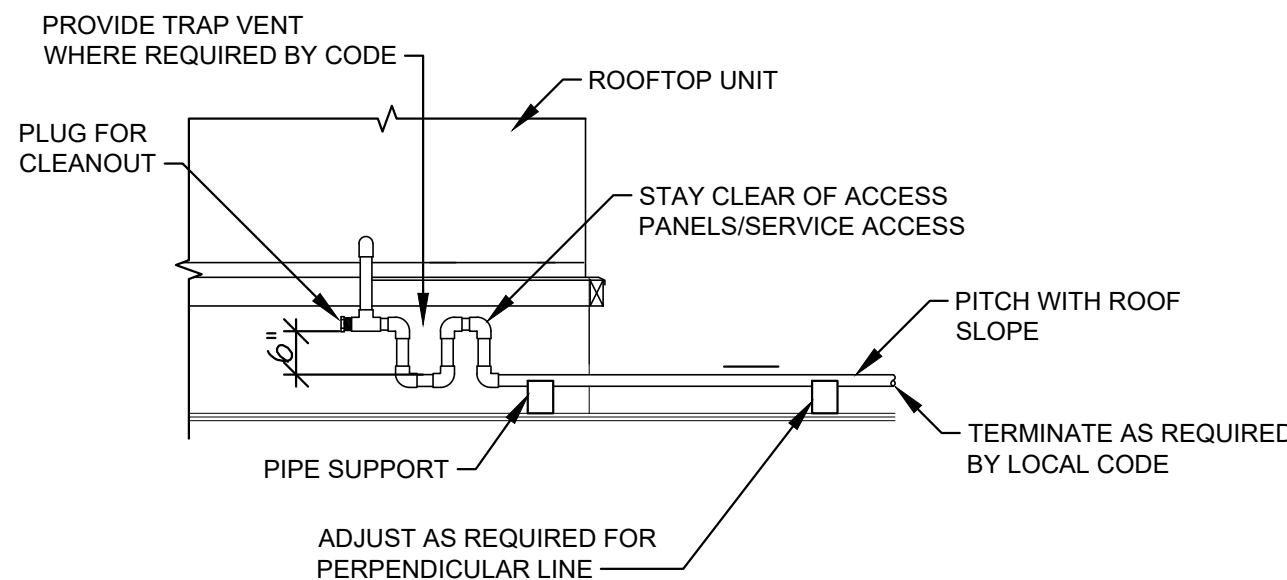
3 ROOFTOP UNIT CURB ATTACHMENT
MP2.0 SCALE NOT TO SCALE



5 ROOFTOP UNIT GAS PIPING DETAIL
MP2.0 SCALE NOT TO SCALE

ROOFTOP UNIT SCHEDULE (gas heat/elec. cool)																				
MARK	MFR./MODEL	DISCHARGE	TONS	ESP	CFM	OUTSIDE AIR CFM (MAX.)	ENTERING CONDITIONS	GROSS COOLING CAPACITY (MBH)		(S)EER	FUEL TYPE	HEATING CAPACITY (MBH)		SSE %	ELECTRICAL DATA			MCA/MOCP	APRX. UNIT WEIGHT (LBS.)	OPTIONS/ ACCESSORIES
								TOTAL	SENSIBLE			INPUT	OUTPUT		VOLTS	PHASE	FREQ.			
RTU-1	CARRIER 48HCE11A2	VERTICAL	10.0	1.00	4,000	1000	80.4°F DB 65.8°F WB @ 96.4°F AMBIENT	116.1	93.8	12.0 EER	NATURAL GAS	224	184	82	208	3	60	54.0 / 60	1,427	1, 2, 3, 4, 5, 6, 7, 8, 9, 10.
RTU-2	CARRIER 48HCE08A2	VERTICAL	7.5	1.00	3,000	750	80.4°F DB 65.8°F WB @ 96.4°F AMBIENT	90.2	73.5	12.0 EER	NATURAL GAS	180	148	82	208	3	60	41.0 / 50	1,228	1, 2, 3, 4, 5, 6, 7, 8, 9, 10.
OPTIONS/ACCESSORIES:																				
1) FACTORY INSTALLED MEDIUM STATIC BELT DRIVE.																				
2) FACTORY INSTALLED, FIELD WIRED DUAL ENTHALPY ECONOMIZER W/ BAROMETRIC RELIEF AND HOODS.																				
3) FACTORY INSTALLED LOUVERED HAIL GUARDS.																				
4) FACTORY INSTALLED, FIELD WIRED NON-FUSED DISCONNECT (REFER TO ELECTRICAL DRAWINGS FOR ADDITIONAL INFORMATION).																				
5) FACTORY INSTALLED, FIELD WIRED NON-POWERED CONVENIENCE OUTLET (REFER TO ELECTRICAL DRAWINGS FOR ADDITIONAL INFORMATION).																				
6) FACTORY FURNISHED, FIELD INSTALLED THRU THE BASE ELECTRICAL & THRU THE CURB GAS KIT.																				
7) FACTORY FURNISHED, FIELD INSTALLED FLUE EXTENSION KIT.																				
8) CONTRACTOR FURNISHED, FIELD INSTALLED SLOPED ROOF CURB.																				
9) TENANT FURNISHED, FIELD INSTALLED/WIRED 7-DAY PROGRAMMABLE THERMOSTAT, WITH NIGHT SETBACK AND AUTO-CHANGEOVER (HONEYWELL RTH8500D OR EQUIVALENT).																				
10) CONTRACTOR FURNISHED, THREE (3) SETS OF PLEATED FILTERS (REFER TO SPECIFICATIONS ON SHEET M101 FOR ADDITIONAL INFORMATION).																				
NOTE:																				
CONTRACTOR SHALL BE RESPONSIBLE FOR ALL STARTUP AND WARRANTY WORK. VERIFY ELECTRICAL POWER PRIOR TO INSTALLING UNITS. FAILURE TO DO SO SHALL RESULT IN CONTRACTOR FURNISHING CORRECT UNITS OR POWER AT NO ADDITIONAL COST TO TENANT.																				
EQUIVALENT UNITS MAY BE PROVIDED. ACCEPTABLE ALTERNATIVE MANUFACTURERS ARE TRANE AND LENNOX.																				

EXHAUST FAN SCHEDULE												
MARK	MFR./MODEL	CFM	RPM	ESP	DRIVE	SONES (MAX)	ELECTRICAL DATA				NOTES	SERVICE
							VOLTS	PHASE	FREQ.	HP		
EF-1	GREENHECK G-090-VG	500	1405	0.31	DIRECT	6.2	115	1	60	1/10	1, 2.	RESTROOMS/OVENS
NOTES: 1) PROVIDE WITH FACTORY ROOF CURB AND BACKDRAFT DAMPER. 2) PROVIDE WITH SPEED CONTROLLER.												



4 ROOFTOP UNIT CONDENSATE PIPING DETAIL
MP2.0 SCALE NOT TO SCALE

CASCO
12 Summit Drive, Suite 100, St. Louis, MO 63143 T: 314.921.1100

MIDLAND

Starbucks & Medical Office
155 S.W. MO-150 HWY
LEE'S SUMMIT, MO 64802

CONSTR. DOC. & REVISIONS
No. Description
1 Owner Review
2 Owner Revision 3

Date
05/12/20
07/20/20

CASCO DIVERSIFIED CORPORATION
PROFESSIONAL ENGINEERING
CERTIFICATE OF AUTHORITY #000613
EXP. 12/31/21

Michael C. Grappnerhaus
Professional Engineer
PE-2008019543
8/20/20

PROFESSIONAL OF RECORD
MICHAEL C. GRAPPERHAUS
License NO.: PE-2008019543
Expiration Date: 12/31/20

Drawn By/Checked By: BAM/MCG
Project Number 320488
Permit Date 06-17-20

MECHANICAL
SCHEDULES
AND DETAILS

M201