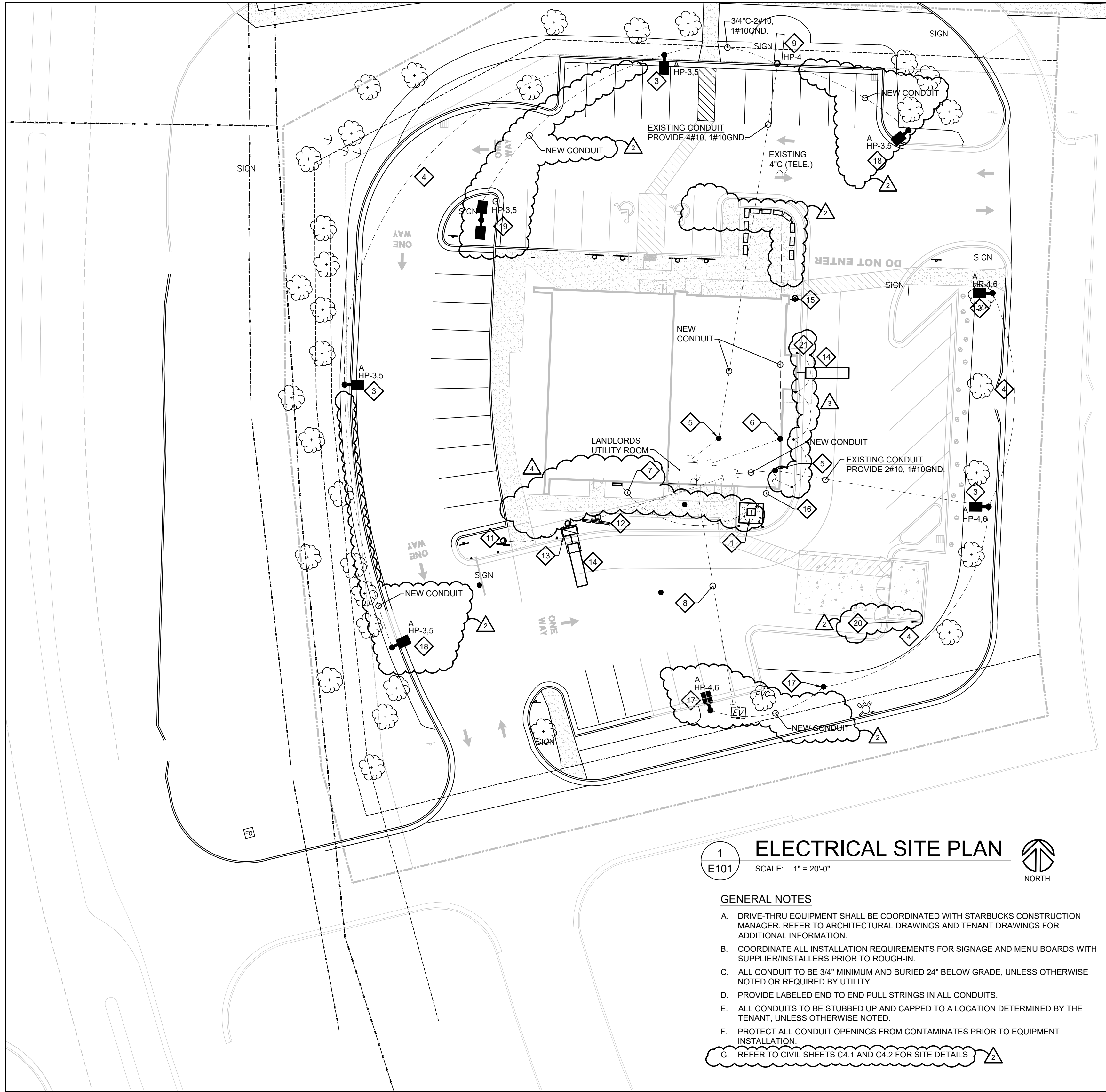


SITE POLE GENERAL NOTES:

1. AT EACH POLE LOCATION, PROVIDE A 3/4" X10" COPPER CLAD GROUND ROD CONNECTED BY A #6 BARE COPPER CONDUCTOR INTO THE GROUND LUG.
2. FURNISH WITH HAND HOLE AND GROUNDED COVER. POLES SHALL BE RATED FOR 109 MPH (ULTIMATE) (115 MILES PER HOUR) WIND. POLES SHALL BE PLUMBED PERFECTLY VERTICAL.

2 LIGHT POLE DETAIL  
SCALE: NOT TO SCALE



1 ELECTRICAL SITE PLAN  
SCALE: 1" = 20'-0"

GENERAL NOTES

1. DRIVE-THRU EQUIPMENT SHALL BE COORDINATED WITH STARBUCKS CONSTRUCTION MANAGER. REFER TO ARCHITECTURAL DRAWINGS AND TENANT DRAWINGS FOR ADDITIONAL INFORMATION.
2. COORDINATE ALL INSTALLATION REQUIREMENTS FOR SIGNAGE AND MENU BOARDS WITH SUPPLIER/INSTALLERS PRIOR TO ROUGH-IN.
3. ALL CONDUIT TO BE 3/4" MINIMUM AND BURIED 24" BELOW GRADE, UNLESS OTHERWISE NOTED OR REQUIRED BY UTILITY.
4. PROVIDE LABELED END TO END PULL STRINGS IN ALL CONDUITS.
5. ALL CONDUITS TO BE STUBBED UP AND CAPPED TO A LOCATION DETERMINED BY THE TENANT, UNLESS OTHERWISE NOTED.
6. PROTECT ALL CONDUIT OPENINGS FROM CONTAMINATES PRIOR TO EQUIPMENT INSTALLATION.
7. REFER TO CIVIL SHEETS C4.1 AND C4.2 FOR SITE DETAILS.

# KEYED NOTES

1. EXISTING UTILITY TRANSFORMER TO REMAIN.
2. NOT USED.
3. EXISTING SITE LIGHT POLE PROVIDE NEW LIGHT FIXTURE TO REPLACE EXISTING LIGHT FIXTURE. EXISTING POLE AND BASE ARE TO REMAIN. RE-CIRCUIT EXISTING UNDERGROUND FEEDERS AS SHOWN, REPAIRING AND REPLACING THE FEEDERS AS NEEDED.
4. ASSUMED EXISTING BRANCH CIRCUIT TO REMAIN.
5. RETRIEVE EXISTING BRANCH CIRCUIT HOMERUN (HOMERUN LOCATION TO BE FIELD VERIFIED), EXTEND TO AND MERGE EXISTING WITH NEW AND ROUTE TO NEW TIMECLOCK HOUSE PANEL "HP". NEW BRANCH CIRCUIT WIRES WILL NEED TO BE PROVIDED (#10 AWG. CU. MIN.).
6. RETRIEVE EXISTING 4"C FOR TELE. SERVICE - EXTEND TO AND CONNECT NEW CONDUIT TO EXISTING. THIS IS THE LOCATION OF THE EXISTING TELE DEMARK.
7. ELECTRIC UTILITY EXTEND CONDUIT AND FEEDER TO CT CABINET, METER, AND DISCONNECT. COORDINATE LOCATIONS WITH CIVIL DRAWINGS. REFER TO DETAIL 1/E301 FOR MORE INFORMATION.
8. DATA PROVIDE (1) 2" EMPTY CONDUIT, FOR BROADBAND CABLING (WITH LABELED PULL STRINGS), COORDINATE EXACT ROUGH-IN LOCATIONS WITH CIVIL DRAWINGS. CONDUIT TO BE ROUTED UP EXTERIOR WALL AND TERMINATED IN JOIST SPACE. WIRING TO BE PROVIDED BY TENANTS CONTRACTOR PER TENANT DRAWINGS.
9. EXISTING TO REMAIN MONUMENT SIGN - REROUTE HOMERUN TO PANEL "HP"

10. NOT USED.
11. PRE-MENU BOARD ROUTE 1" CONDUIT FROM PRE-MENU TO DOS (DIGITAL ORDER SCREEN) / DCB (DIGITAL CIRCUIT BOX) LOCATION. PROVIDE LABELED PULL STRINGS.
12. MENU BOARD ROUGH-IN ROUTE (2) 1" CONDUIT FROM MENU TO PANEL "SBA". ROUTE 1" CONDUIT FROM MENU TO DOS (DIGITAL ORDER SCREEN) / DCB (DIGITAL CIRCUIT BOX) LOCATION. PROVIDE LABELED PULL STRINGS.
13. ORDER POINT ROUGH-IN ROUTE (2) 1" CONDUITS FROM DOS / DCB TO DRIVE-THROUGH WINDOW BUMP ALONG EXTERIOR OF BUILDING 18" BELOW GRADE. TERMINATE INSIDE SOUTH WALL OF DT BUMP. ROUTE (1) 1" CONDUIT FROM DOS / DCB TO INSIDE BUILDING CLOSE TO ELECTRICAL PANEL. PROVIDE LABELED PULL STRINGS FOR ALL CONDUITS.
14. LOOP DETECTOR IN CONDUIT TO BE INSTALLED IN 1/4" WIDE BY 2" DEEP SAW CUT SLOT. ROUTE 1" CONDUIT FROM LOOP DETECTOR TO DRIVE THROUGH WINDOW. COORDINATE LOCATION WITH TENANT CONSTRUCTION MANAGER PRIOR TO ROUGH-IN.
15. DIRECTIONAL SIGN ROUGH-IN PROVIDE 1-1/2" EMPTY CONDUIT WITH PULL WIRE WITH LABELED PULL STRINGS. EXTEND THE CONDUIT TO 4" ABOVE GRADE. ENTER THE BUILDING WITH (1) 1-1/2" CONDUIT AS CLOSE TO THE ELECTRICAL PANEL AS POSSIBLE. COORDINATE EXACT ROUGH-IN LOCATIONS WITH CIVIL DRAWINGS. WIRING TO BE PROVIDED BY TENANTS CONTRACTOR PER TENANT DRAWINGS.
16. SPARE CONDUIT PROVIDE 1" CONDUIT TO BE RUN THROUGH FOUNDATION

WALL OUT REAR OF BUILDING, CAPPED AND TERMINATED ABOVE CEILING. VERIFY LOCATIONS FOR STUB-UP WITH TENANT'S REPRESENTATIVE PRIOR TO ROUGH-IN.

17. RELOCATED LIGHTING POLE WITH NEW LUMINAIRE HEAD EXTEND EXISTING BRANCH CIRCUIT TO NEW LOCATION AS SHOWN. PROVIDE 2#10, 1#10 GND. MATCH EXISTING CONDUIT SIZE. REFER TO DETAIL 2/E101 FOR MORE INFORMATION.
18. NEW SINGLE HEAD LIGHTING POLE PROVIDE REFER TO DETAIL 2/E101 FOR MORE INFORMATION. PROVIDE LITHONIA #RTS-25-S-5-9B-T20-DM19AS-DDBXD POLE AND 2#10, 1#10 GND FEEDER TO POLE LOCATION.
19. NEW DOUBLE HEAD LIGHTING POLE PROVIDE REFER TO DETAIL 2/E101 FOR MORE INFORMATION. PROVIDE LITHONIA #RTS-25-S-5-9B-T20-DM28AS-DDBXD POLE AND 2#10, 1#10 GND FEEDER TO POLE LOCATION.
20. DUMPSTER LIGHT POLE PROVIDE LED SOLAR SECURITY DOWNLIGHT ON POLE MOUNTED TO TOP OF ENCLOSURE WALL WITH MASONRY FASTENER. COORDINATE LIGHT FIXTURE HEIGHT, POLE SELECTION, AND POLE HEIGHT WITH OWNER PRIOR TO ROUGH-IN.
21. LIGHTED BOLLARD RUN 4" C BETWEEN EACH LIGHTED BOLLARD AND FINAL BOLLARD TO INSIDE BUILDING NEAR ELECTRICAL PANELS. PROVIDE LABELED PULL STRINGS IN EACH CONDUIT.

CONSTR. DOC. & REVISIONS

No.	Description	Date
1	Owner Review	05/12/20
2	Owner Review 2	06/04/20
3	City Comments	06/30/20
4	Owner Revision 3	07/20/20
5	Revision 5	08/06/20
6	Owner Revision 6	08/20/20

CASCO DIVERSIFIED  
CORPORATION PROFESSIONAL  
ENGINEERING CERTIFICATE OF  
AUTHORITY #000613  
EXP. 12/31/21



HARRY J. AUMAN  
LIC. #1616827  
EXP. 12/31/20

Drawn By/Checked By: EAV/DAW

Project Number 320488

Permit Date 06-17-20

ELECTRICAL SITE  
PLAN

E101

CASCO

12 Summit Drive, Suite 100, St. Louis, MO 63143 T: 314.821.1100

MIDLAND

Starbucks & Medical Office

155 S.W. MO-150 HWY  
LEE'S SUMMIT, MO 64802