

Layout Name
20-07384 Rev 1 Silverton III

2nd Floor

RELEASE FOR
CONSTRUCTION
AS NOTED ON PLANS REVIEW
DEVELOPMENT SERVICES
LEE'S SUMMIT, MISSOURI
08/20/2020

Legend	
WS	Web Stiffener
FS	Point Load Support
	Wall
	onCENTER Rim Board SE 1.125 X 11.875
	BLI 40 11.875
	onCENTER 2.0E LVL 1.75 X 9.5 (Dropped)
	onCENTER 2.0E LVL 1.75 X 11.875
	3.5 X 9.5 (Dropped)
	3.5 X 11.875
	6 X 6 (Dropped)

- GENERAL NOTES:**
- 1.) See Attached Installation Guide
 - 2.) Care should be taken when setting i-joists to avoid plumbing drops and mechanical chases, (DO NOT CUT OR DRILL THROUGH I-JOISTS FLANGES)
 - 3.) All walls, headers and beams are to be adequately designed and supplied by others to support all loads applied to them
 - 4.) (Dealer) recommends gluing and nailing floor sheathing to i-joists
 - 5.) I-joint spacing is not to exceed spacing shown on placement plan.
 - 6.) All headers are assumed dropped below i-joint framing unless noted otherwise.
 - 7.) Solid blocking down to foundation is to be provided by others at all headers, beams and girder bearing points.
 - 8.) Provisions must be made by others to avoid excessive moisture content in lumber. Engineered wood products shall not be placed in any environment that will cause the moisture content of the wood to exceed 19%.
 - 9.) Construction loads such as stacking of drywall, plywood, shingles, masonry materials, mechanical equipment, etc. in any one concentrated area on i-joists is strictly prohibited. I-joists are not designed for these types of conditions.

- Additional Notes**
1. THIS PLACEMENT PLAN IS TO BE REVIEWED AND APPROVED BY THE ARCHITECT/ENGINEER OF RECORD PRIOR TO INSTALLATION OF EWP PRODUCTS
 2. BLUELINX CAN'T BE LIABLE FOR CHANGES MADE TO THIS PLAN WITHOUT WRITTEN APPROVAL

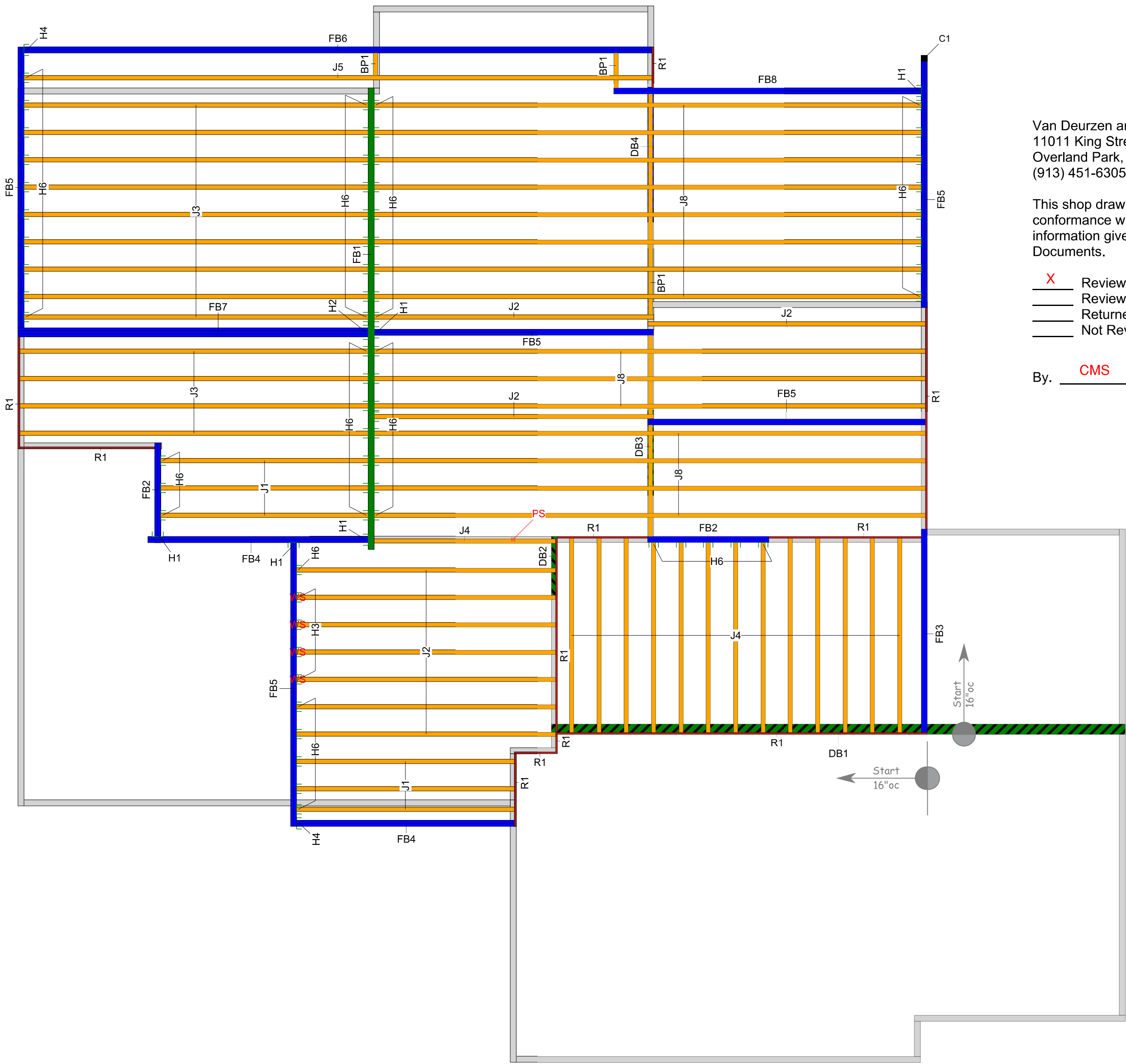
Layout Scale 1/4" = 1'

Van Deurzen and Associates, P.A.
11011 King Street, Suite 130
Overland Park, KS 66210
(913) 451-6305 FAX: (913) 451-1021

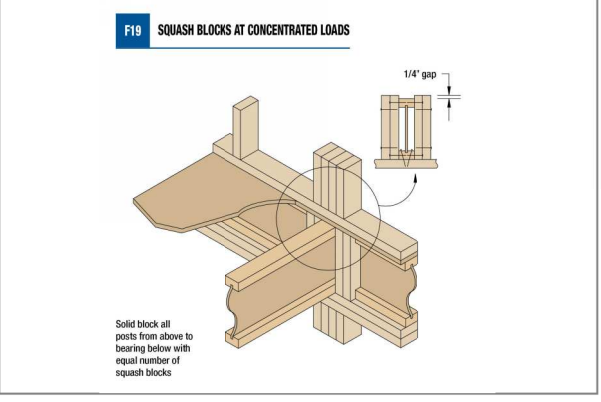
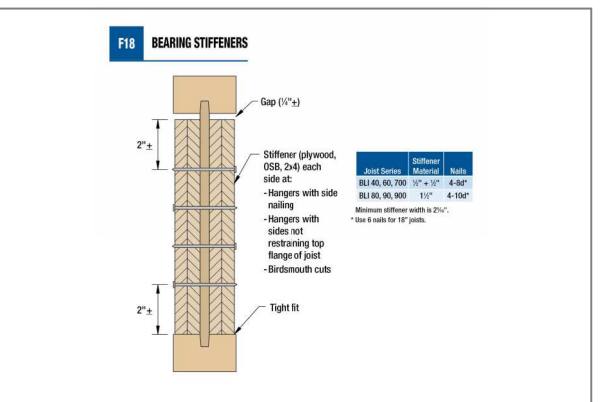
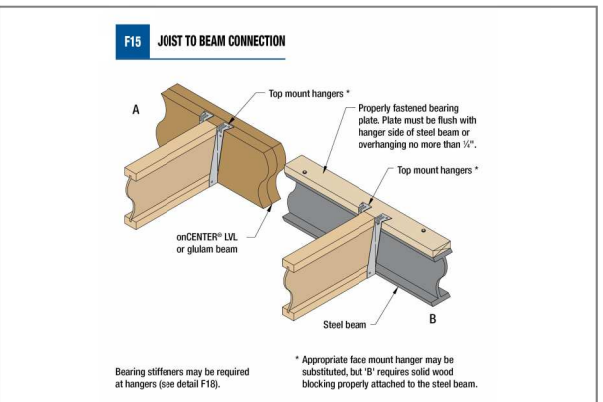
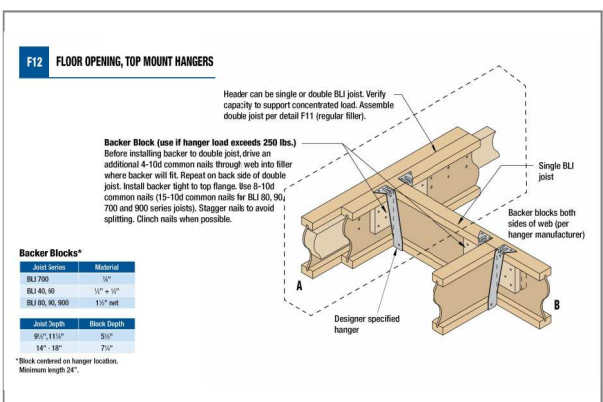
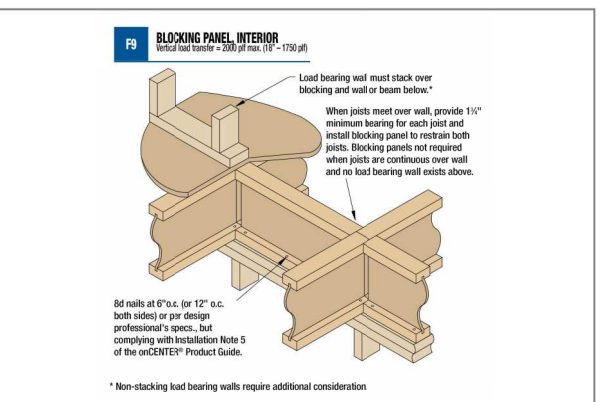
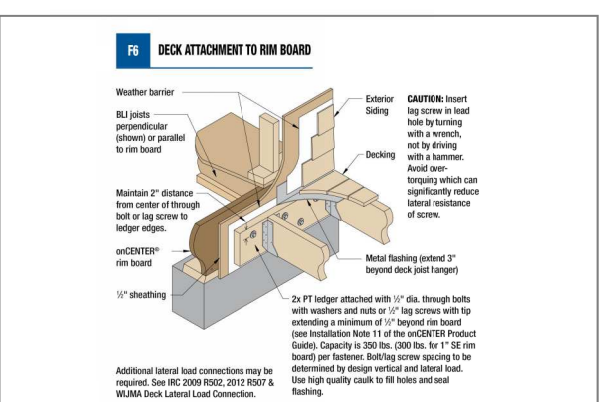
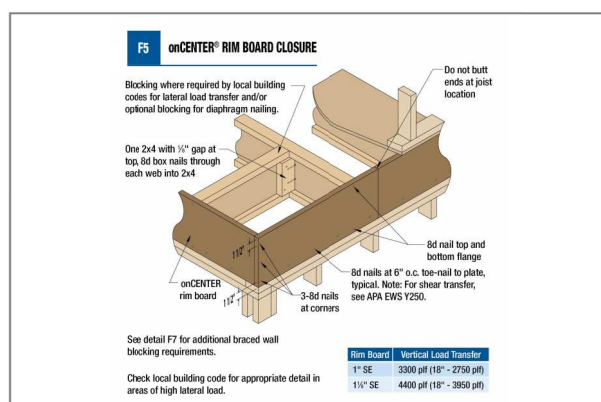
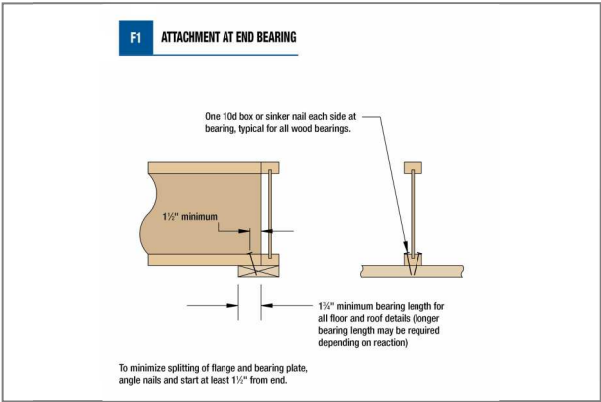
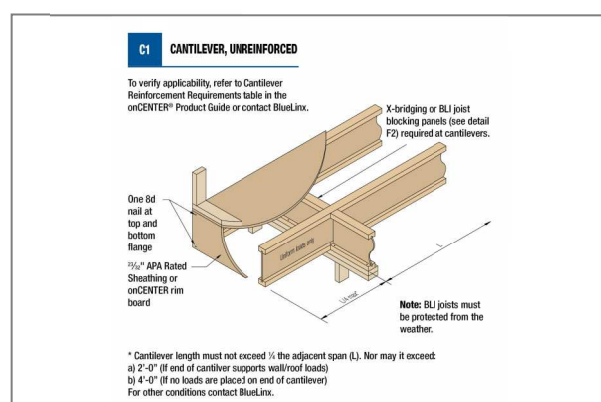
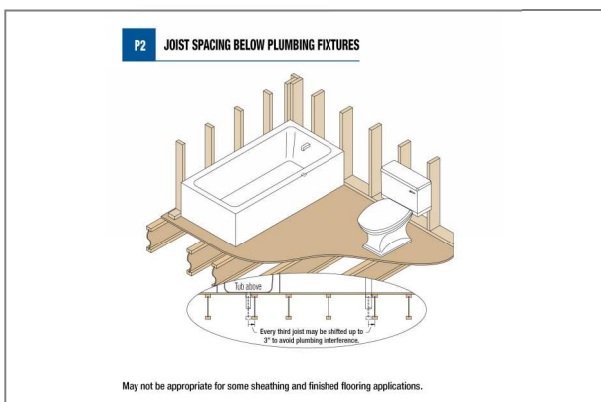
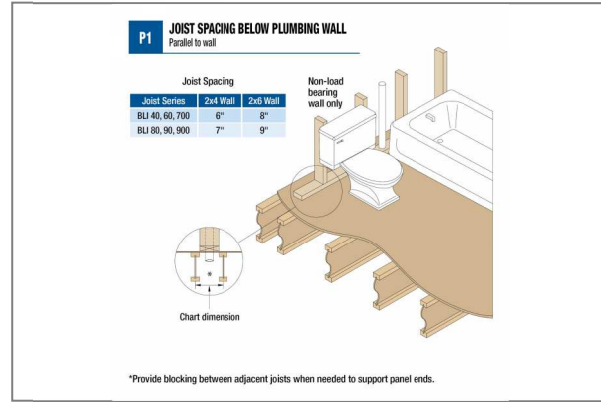
This shop drawing has been reviewed for conformance with the design concept and information given in the Contract Documents.

- X Reviewed with no exceptions noted.
Reviewed as noted.
Returned for correction.
Not Reviewed.

By, CMS Date: 08/20/2020



2nd Floor							
Joist							
Label	Description	Width	Depth	Qty	Plies	Pcs	Length
J5	BLI 40	2.5	11.875			1	32-0-0
J8	BLI 40	2.5	11.875			15	28-0-0
J3	BLI 40	2.5	11.875			13	18-0-0
J2	BLI 40	2.5	11.875			10	14-0-0
J1	BLI 40	2.5	11.875			6	12-0-0
J4	BLI 40	2.5	11.875			14	10-0-0
Blocking							
Label	Description	Width	Depth	Qty	Plies	Pcs	Length
BP1	BLI 40	2.5	11.875	LinFt		Varies	20-0-0
LVL/LSL							
Label	Description	Width	Depth	Qty	Plies	Pcs	Length
DB4	onCENTER 2.0E LVL	1.75	9.5	1	2	2	8-0-0
FB6	onCENTER 2.0E LVL	1.75	11.875	1	2	2	32-0-0
FB7	onCENTER 2.0E LVL	1.75	11.875	1	3	3	18-0-0
FB8	onCENTER 2.0E LVL	1.75	11.875	1	2	2	16-0-0
FB5	onCENTER 2.0E LVL	1.75	11.875	5	2	10	14-0-0
FB4	onCENTER 2.0E LVL	1.75	11.875	2	2	4	12-0-0
FB3	onCENTER 2.0E LVL	1.75	11.875	1	2	2	10-0-0
FB2	onCENTER 2.0E LVL	1.75	11.875	2	2	4	6-0-0
Rim Board							
Label	Description	Width	Depth	Qty	Plies	Pcs	Length
R1	onCENTER Rim Board SE 1.125 X 11.875	1.125	11.875			6	12-0-0
Hanger							
Label	Pcs	Description	Skew	Slope			
H1	5	HHUS410					
H2	1	HGUS5.50/10					
H3	4	IUS2.56/11.88 (Max)					
H4	2	HUCQ412-SDS					
H6	65	IUS2.56/11.88 (Min)					
Beam By Others							
Label	Description	Width	Depth	Qty	Plies	Pcs	Length
DB3	[2 x 10]	3.5	9.5			1	6-0-0
DB2	[2 x 10]	3.5	9.5			1	4-0-0
DB1	[Beam per Blueprint]	6	6			1	28-0-0
FB1	[Upset Steel Beam]	3.5	11.875			1	24-0-0



BlueLinX Corporation
1727 Warren St.
North Kansas City, MO. 64116
Phone: (816) 842-3367
VISIT US ON THE WEB AT: <https://bluelinxco.com>

Builder
84 LUMBER
Layout Name
20-07384 Rev 1 Silverton III
Project
Shipping
20-07384 Rev 1 2358 SW River Trail Rd LSMO / Lot 710 Eagle Creek
Created
July 31, 2020
Revised
August 18, 2020
Designer
Scott Van Cleave

2nd Floor
Design Method ASD (USA)
Building Code IBC/IRC 2015
Floor
Loads
Live 40
Dead 10
Deflection Joist
LL Span L/ 480
TL Span L/ 240
TL Cant 2L/ 360
TL Cant 2L/ 360
Deflection Girder
LL Span L/ 360
TL Span L/ 240
LL Cant 2L/ 360
TL Cant 2L/ 360
Decking
Decking 058
23/32 APA Rated Studded-Floor
Fastener Nailed & Glued

SHEET
1 OF 1