

**RELEASE FOR
CONSTRUCTION
AS NOTED ON PLANS REVIEW
DEVELOPMENT SERVICES
LEE'S SUMMIT, MISSOURI**

08/18/2020

STATE: MISSOURI
COUNTY: JACKSON
CITY: LEE'S SUMMIT
TYPE: NON-DIVING POOL
SCOPE: SINGLE BODY POOL
CONSTRUCTION METHOD: SHOTCRETE
SANITATION: CHLORINE
HEATED: NATURAL GAS

MIDWEST CUSTOM POOLS

GLEN WESTERVELT, PRESIDENT
785.766.1111
GLEN@MIDWESTCUSTOMPOOLS.COM

CLINT PINNICK, PROJECT MANAGER
785.979.4955
CLINT@MIDWESTCUSTOMPOOLS.COM

PERIMETER: 224 - FT

SURFACE AREA: 2050 - SQFT

APPROXIMATE VOLUME: 45,000 - GALLONS

MINIMUM TURNOVER: 4 TIMES PER 24 HRS

DESIGNED FLOW RATE: 125 - GPM

- > ANY CHANGES IN CONSTRUCTION PLANS OR EQUIPMENT MUST BE APPROVED BY THE COUNTY HEALTH DEPARTMENT. CHANGES MAY REQUIRE ADDITIONAL PLAN CHECK FEES AND RE-SUBMITTAL.
- > POOL PLAN APPROVAL DOES NOT AUTHORIZE THE VIOLATION OF ANY LAW, ORDINANCE, OR REGULATION AND FINAL APPROVAL IS SUBJECT TO FIELD INSPECTION.
- > ALL EQUIPMENT SHALL BE INSTALLED PER MANUFACTURER'S INSTRUCTIONS.

- > ALL EQUIPMENT AND MATERIALS NOT SHOWN OR SPECIFIED ON THESE PLANS, BUT REQUIRED TO COMPLETE THIS PROJECT, SHALL BE SUPPLIED BY THE POOL CONTRACTOR AS PART OF THIS CONTRACT WORK.
- > REINFORCING STEEL OF ALL AQUATIC FEATURES SHALL BE BONDED WITH A #8 COPPER WIRE. TIED BOND TO EACH MECHANICAL SYSTEM AND ALL RAIL ANCHORS AND METAL WITHIN 5 FT OF POOL EDGE.

- > ALL STEEL TO BE GRADE 40, #4 BAR AND A MINIMUM OF 12" ON CENTER EACH WAY HORIZONTAL AND VERTICAL. DAM WALLS 12" THICK TO HAVE A DOUBLE MAT OF STEEL
- > REINFORCING STEEL TO BE PLACED A MINIMUM OF 2" BELOW EXPOSED FACE OF CONCRETE

SD0.00	COVER SHEET
SD1.01	SUBMITTALS
SD2.01	LAYOUT PLAN
SD3.01	PLUMBING PLAN - SUCTION
SD3.02	PLUMBING PLAN - RETURN
SD4.01	LIGHTING PLAN
SD5.01	BONDING PLAN
SD6.01	PROFILE & REBAR PLAN
SD8.01	DETAILS

- > 4 FT. MAX WATER DEPTH
- > (2) MAIN DRAINS
- > (9) SURFACE SKIMMERS
- > (9) RETURNS
- > (1) 3 HP VARIABLE SPEED CIRCULATION PUMP
- > (12) LED LIGHTS
- > (1) 48" SAND FILTER
- > (1) LIQUID CHLORINE SANITATION SYSTEM
- > (1) 400K BTU ASME NATURAL GAS HEATER
- > (1) ADA CHAIR LIFT
- > INTELLICHEM CHEMICAL AUTOMATION W/ ACID
& CHLORINE INJECTION SYSTEM
- > AUTOFILL WATER LEVEL SYSTEM
- > WATER LINE TILE, STANDARD
- > DEPTH MARKER TILES IN WATER LINE AND COPING
- > SUPER BLUE QUARTZ INTERIOR FINISH
- > MARKER RIBBON, 2 ROWS OF 1" TILE, STANDARD
- > SAFETY GRIP COPING
- > GEO FOAM FORMING SYSTEM

- > ANSI POOL AND SPA STANDARD TO PREVENT SUCTION ENTRAPMENT
- > VIRGINIA GRAEME BAKER SAFETY ACT
- > COUNTY ENVIRONMENTAL SANITARY CODE
- > COUNTY CODE OF REGULATIONS FOR BUILDINGS AND CONSTRUCTION.

MIDWEST CUSTOM POOLS
600 Lincoln Street
Lawrence, KS 66044
P. 785.843.9119
F. 785.843.6524
MidwestCustomPools.com



Summit at West Pryor
940 NW Pryor Road
Lee's Summit, MO 64081

Plan Date:
08.10.20 rev2

Drawn By: DN

SHEET NO.
SD0.00

The advertisement features a large, detailed image of a Pentair IntelliFlo XFS VSF Variable Speed and Flow Pump. The pump is a light beige or tan color with a black impeller housing on the left side. It has a white outlet pipe on the left and a black power cord on the right. The pump is shown from a three-quarter front view, angled slightly to the right. The background is a clean, white surface. In the top left corner, the Pentair logo is displayed, consisting of a stylized blue and white diamond shape followed by the word "PENTAIR" in blue capital letters. In the top right corner, the product name "INTELLIFLOXFS VSF" is written in white capital letters on a dark grey rectangular background. Below the product name, the text "INTELLIFLOXFS VSF" is written in a large, bold, black serif font, followed by "VARIABLE SPEED AND FLOW PUMP" in a smaller, bold, black sans-serif font. Below this, a tagline reads "PRECISE FLOW CONTROL AND HIGHEST AVAILABLE SAVINGS IN OUR MOST EFFICIENT PUMP." in a small, bold, black sans-serif font. In the bottom left corner, the "TRADEGRADE BY PENTAIR" logo is shown, with "TRADEGRADE" in a bold, black sans-serif font and "BY PENTAIR" in a smaller, black sans-serif font below it. To the right of this logo is a small blue square icon with a white checkmark and the word "CERTIFIED" in white capital letters. In the bottom right corner, the website "pentairusa.com" is written in a small, blue, sans-serif font.

[illegible]

Installers' Guide

Stair Rails – 3-Bend

- Tailing 1/8" x 1/2"
- Add Thickness (A)* or 3/16" or 5/16"
- Stainless Steel 304 or 316L Marine Grade** (add HSG to part number)
- 304L 1" Radius
- Custom Powder Coating and Powdercoat Self-Healing Available
- Recommended anchors AS-1008 (order separately)
- Recommended excavator TP-3027 (order separately)
- * 1/8" minimum tail thickness is .045 for Commercial
- ** Minimum requirement for salt pools is 316L Marine Grade

Part #	Description	A	B	C	D	E	BENDING			
							Length	Width	Height	
3B-R4	4" 3-BEND	20"	0" 1/8"	18"	32"	20"	11-5/8 lbs	40"	42"	2"
							5-1/2 lbs	30"	32"	3"
3B-R5	5" 3-BEND	20"	0" 1/8"	18"	32"	20"	15-3/4 lbs	72"	42"	3"
							7-1/4 lbs	30"	32"	3"
3B-R6	6" 3-BEND	20"	0" 1/8"	18"	32"	20"	12-2/3 lbs	60"	42"	3"
							5-1/2 lbs	30"	32"	3"
3B-R4.5	4.5" 3-BEND	20"	0" 1/8"	18"	32"	20"	15-3/4 lbs	60"	42"	3"
							5-1/4 lbs	24"	30"	3"
3B-R4.5	4.5" 3-BEND	22"	0" 1/8"	20"	34"	22"	15-3/4 lbs	72"	42"	3"
							7-1/4 lbs	30"	32"	3"
3B-R7	7" 3-BEND	20"	0" 1/8"	18"	32"	20"	15-3/4 lbs	60"	42"	3"
							7-1/4 lbs	30"	32"	3"
3B-R8	8" 3-BEND	20"	0" 1/8"	18"	32"	20"	15-3/4 lbs	60"	42"	3"
							7-1/4 lbs	30"	32"	3"

Notes:

* Add 1/8" to the part number for 200# welded rail or add 1/4" for 300# rail.
 ** Minimum thickness is 1/8" - weld rail for 1/4" - weld 300# rail. Add 1/4" to the part number for 1/4" stainless steel or 304 SS.
 *** For stainless steel or salt pool - Add 1/4" to the part number for 1/4" stainless steel or 304 SS.

SRSmith

www.srsmith.com / 800.821.4387
 © 2014 SR Smith, LLC. All rights reserved. All other marks are the property of their respective owners.
 For the latest revision of this document, see www.srsmith.com

[illegible]

MICROBRITE® COLOR AND WHITE LED LIGHT

backscatter effect pool lighting

Remarkably Easy Installation in New Pools and Retrofit's

There's no wonder why we're the go-to lighting and design specialist for new projects, retrofits or upgrades:

- **Fit Where Others Don't**
Only 2 mounting tabs. Fits into corners with no tight spaces
- **Efficient, Rugged Light**
Energy-saving, long-lasting LED lighting. Operates in total or partial sun/night UV LED lighting
- **Outstanding Light Quality**
No flickers or hot spots. Instant color and brilliance
- **No Hidden Repairs**
Insulated in any standard 1/2-inch gap walling
- **Easy Installation**
No complex wiring or gas installation required. Can be installed in seconds or in minutes
- **Secure**
Two times the life of nonrecursion light
- **Safety Certified**
UL-listed, nonrecursion class ICS certification
- **No Building Required**
Nonrecursion inlets and materials
- **Ready-to-Go Standard**
Comes with any Pentair installation kit and the Pentair installation® Controller
- **Great Colors**
Seven color-coded colors and color blends with Pentair® ColorPad® Controller by C.E.C. Lights
- **Available in Warm White**
Available in Warm White provides the gentle radiance of incandescents. Optically advanced light beam of brilliant clarity, energy-saving, high-performance LED technology.

CONCRETE INFORMATION

Part No.	Description
000-011	Microbrite, Colors, 100-Foot Cord
000-016	Microbrite, Colors, 150-Foot Cord
000-018	Microbrite, Colors, 100-Foot Cord
000-019	Microbrite, Colors, 150-Foot Cord
000-021	Microbrite, Warm White, 100-Foot Cord
000-022	Microbrite, Warm White, 150-Foot Cord
000-020	Microbrite, White, 100-Foot Cord
000-023	Microbrite, White, 150-Foot Cord

Water Division • Hayward, CA 94588 • United States • 800.441.2912 • pentairusa.com

©2014 Pentair Limited. All rights reserved. Pentair, the Pentair logo, Microbrite, and the Microbrite logo are trademarks of Pentair Limited. All other trademarks are the property of their respective owners. Pentair Limited is not responsible for the content of any website not owned or controlled by Pentair Limited. Pentair Limited is not responsible for the content of any website not owned or controlled by Pentair Limited. Pentair Limited is not responsible for the content of any website not owned or controlled by Pentair Limited.

Microbrite®
LED lighting for pools
and spas

TRADEMARK

The Microbrite logo and Microbrite are trademarks of Pentair Limited. All other trademarks are the property of their respective owners.

PROVIDED BY OTHERS



Midwest
CUSTOM POOLS



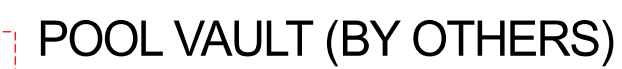
Summit at West Pryor
940 NW Pryor Road
Lee's Summit, MO 64081

Plan Date:
08.10.20 rev2

Drawn By: DN

SHEET NO.
SD1.01

1. ALL ELECTRICAL WORK (BY OTHERS) MUST BE INSTALLED BY A LICENSED ELECTRICIAN IN ACCORDANCE WITH NEC AND APPLICABLE LOCAL CODES AND ORDINANCES.
2. BONDING SHALL BE PERFORMED IN ACCORDANCE WITH SECTION 680-25 OF NEC.
3. GAS LINE FOR HEATER BY OTHERS.
4. POOL DECK
5. DECK DRAINAGE BY OTHERS.
6. SANITARY LINE AND TERMINATION FOR BACKWASHING ARE BY OTHERS. MINIMUM FLOW RATE IS LISTED IN DESIGN DRAWINGS.
7. DOMESTIC WATER CONNECTIONS ARE BY OTHERS.
8. DRAINING OF POOL IS BY OTHERS.
9. REFERENCE AND FOLLOW THE GEOTECHNICAL REPORT FOR ALL PERTINENT INFORMATION REGARDING SITE CONDITIONS.
10. POOL VAULT



600 Lincoln Street
Lawrence, KS 66044

P. 785.843.9119

F. 785.843.6524

MidwestCustomPools.com

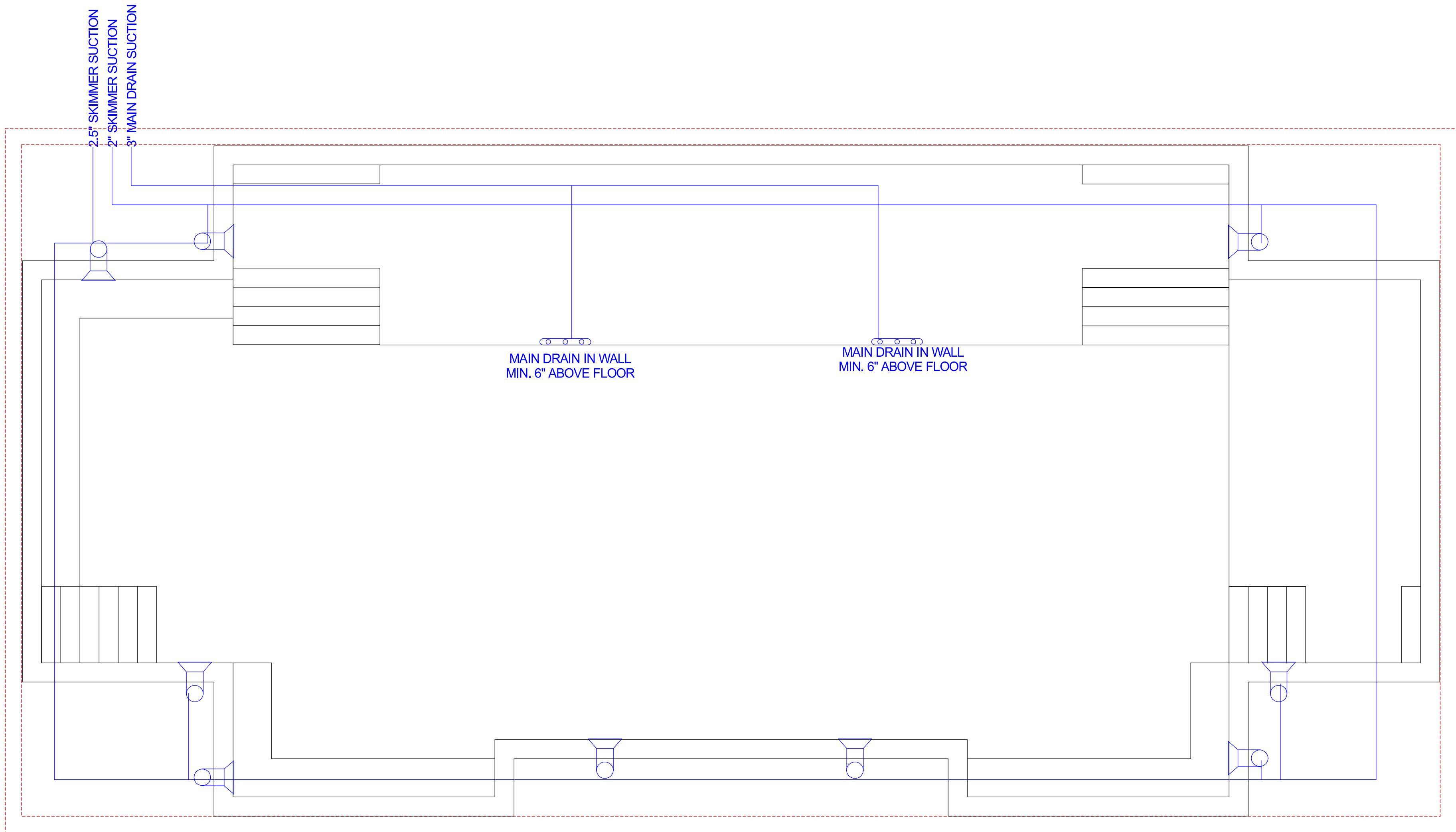
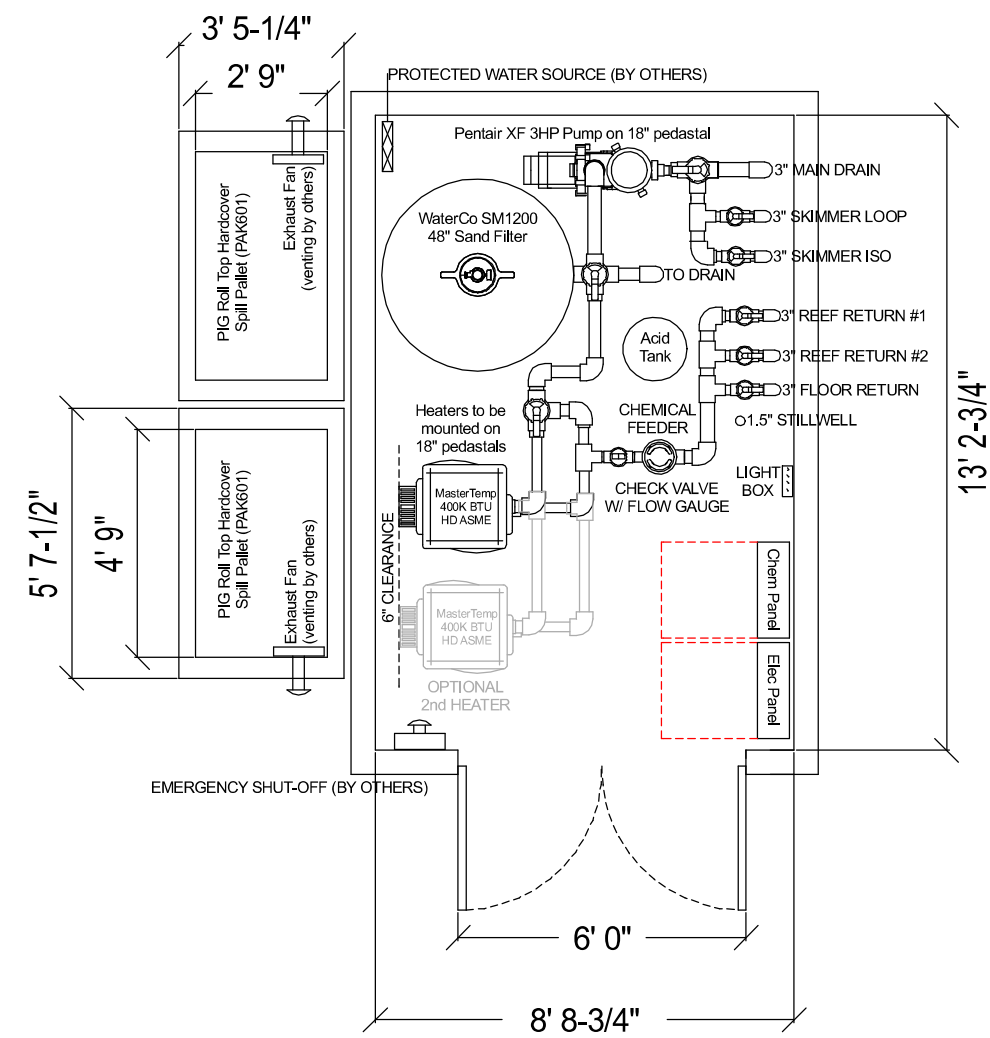


08/18/2020

940 NW Pryor Road
Lee's Summit, MO 64063

Drawn By: DN

SD2.01



POOL VAULT (BY OTHERS)



Summit at West Pryor
940 NW Pryor Road
Lee's Summit, MO 64081

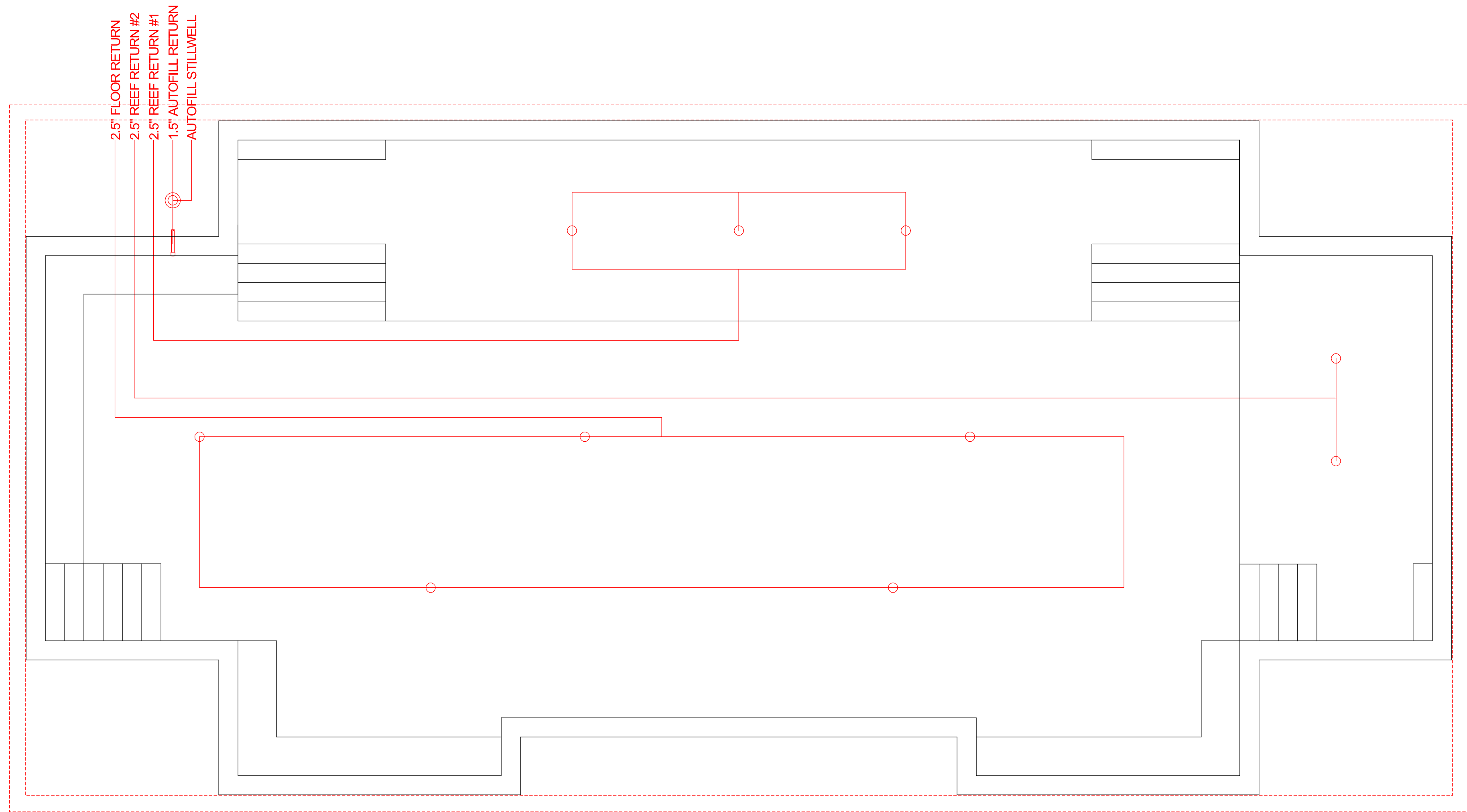
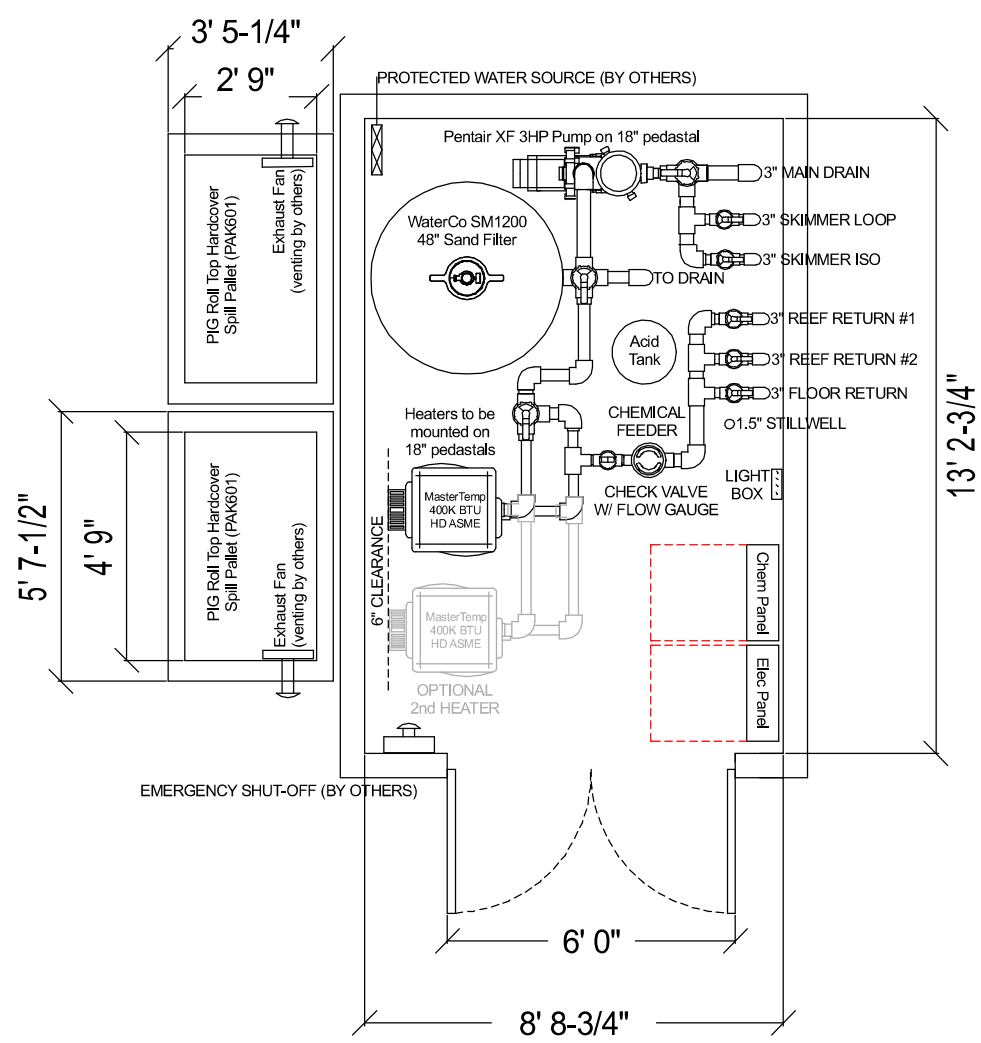
Plan Date:
08.10.20 rev2

Drawn By: DN

SHEET NO.
SD3.01

MIDWEST CUSTOM POOLS
600 Lincoln Street
Lawrence, KS 66044
P: 785.843.9119
F: 785.843.6524
MidwestCustomPools.com





Summit at West Pryor
940 NW Pryor Road
Lee's Summit, MO 64081

Plan Date:
08.10.20 rev2

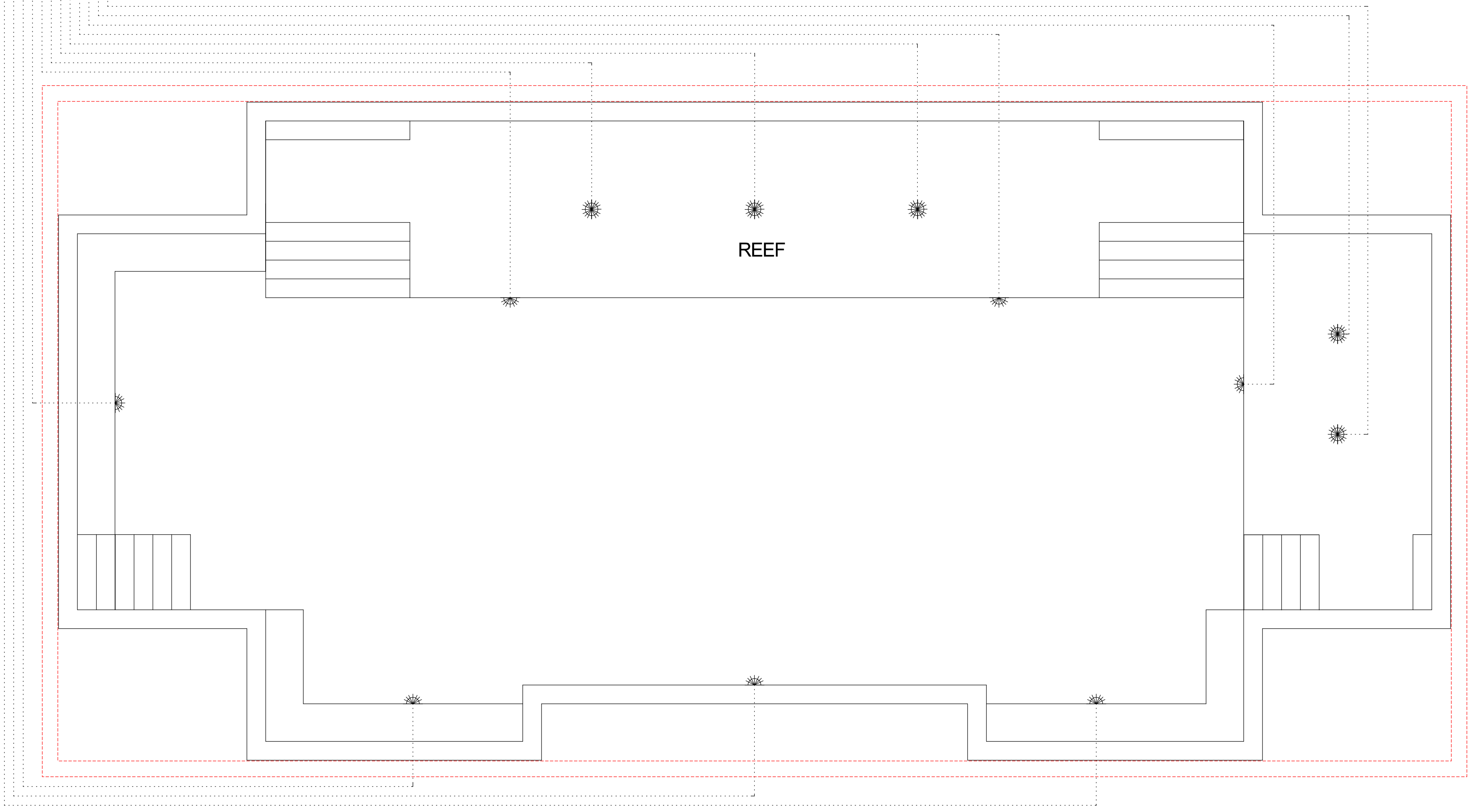
Drawn By: DN

SHEET NO.
SD3.02

MIDWEST CUSTOM POOLS
600 Lincoln Street
Lawrence, KS 66044
P. 785.843.9119
F. 785.843.6524
MidwestCustomPools.com



1" LIGHTING CONDUITS
TO JUNCTION BOX IN
LANDSCAPE PLANTER



POOL VAULT (BY OTHERS)

Summit at West Pryor
940 NW Pryor Road
Lee's Summit, MO 64081

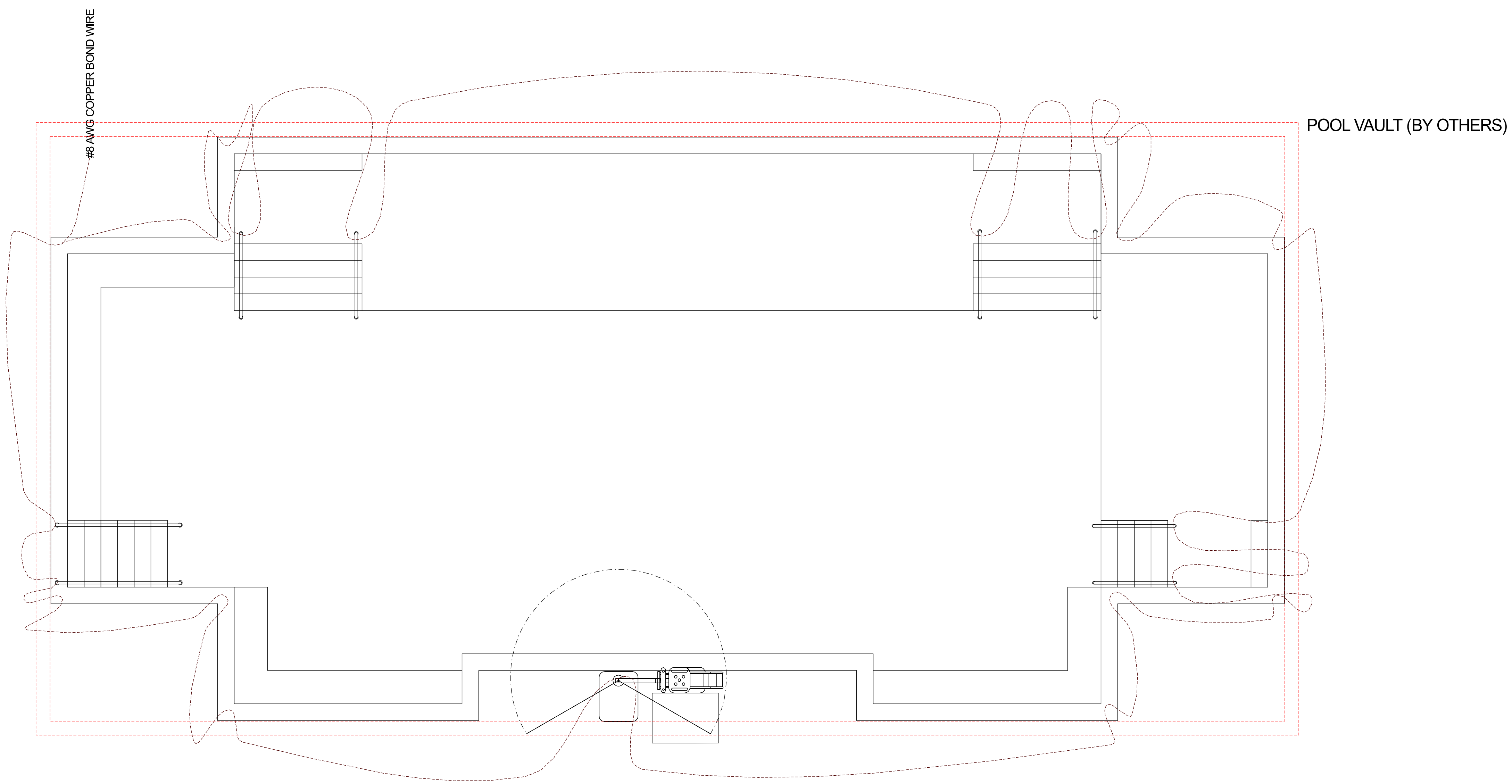
Plan Date:
08.10.20 rev2

Drawn By: DN

SHEET NO.
SD4.01



MIDWEST CUSTOM POOLS
600 Lincoln Street
Lawrence, KS 66044
P. 785.843.9119
F. 785.843.6524
MidwestCustomPools.com



Summit at West Pryor
940 NW Pryor Road
Lee's Summit, MO 64081

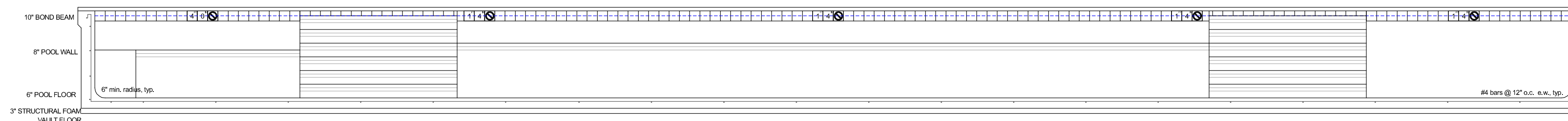
Plan Date:
08.10.20 rev2

Drawn By: DN

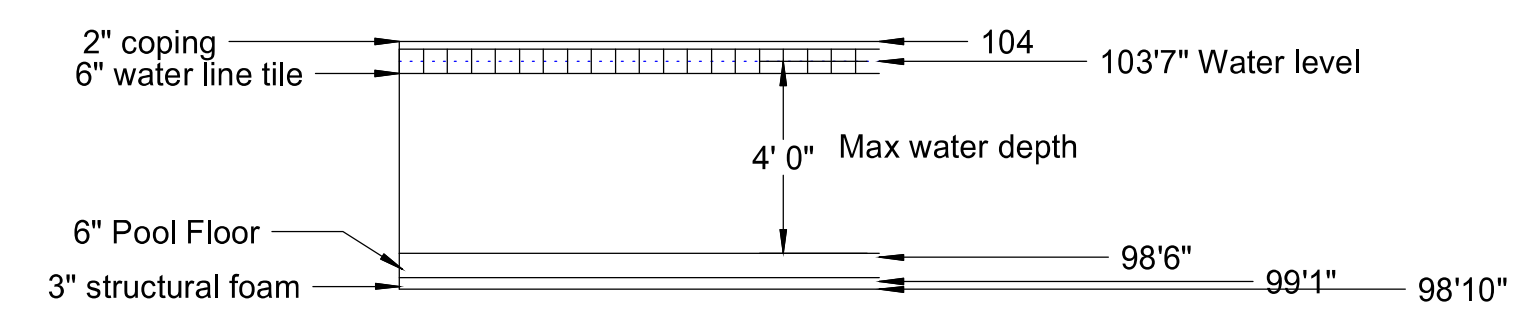
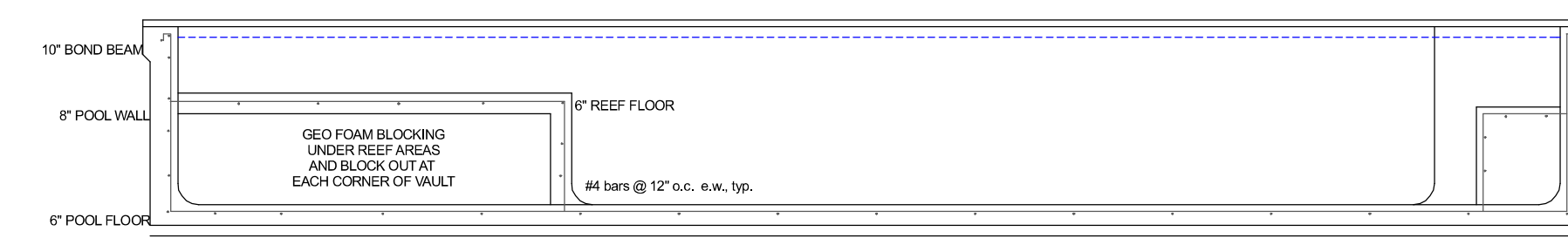
SHEET NO.
SD5.01



MIDWEST CUSTOM POOLS
600 Lincoln Street
Lawrence, KS 66044
P: 785.843.9119
F: 785.843.6524
MidwestCustomPools.com



PROFILE LENGTH



PROFILE WIDTH



08/18/2020

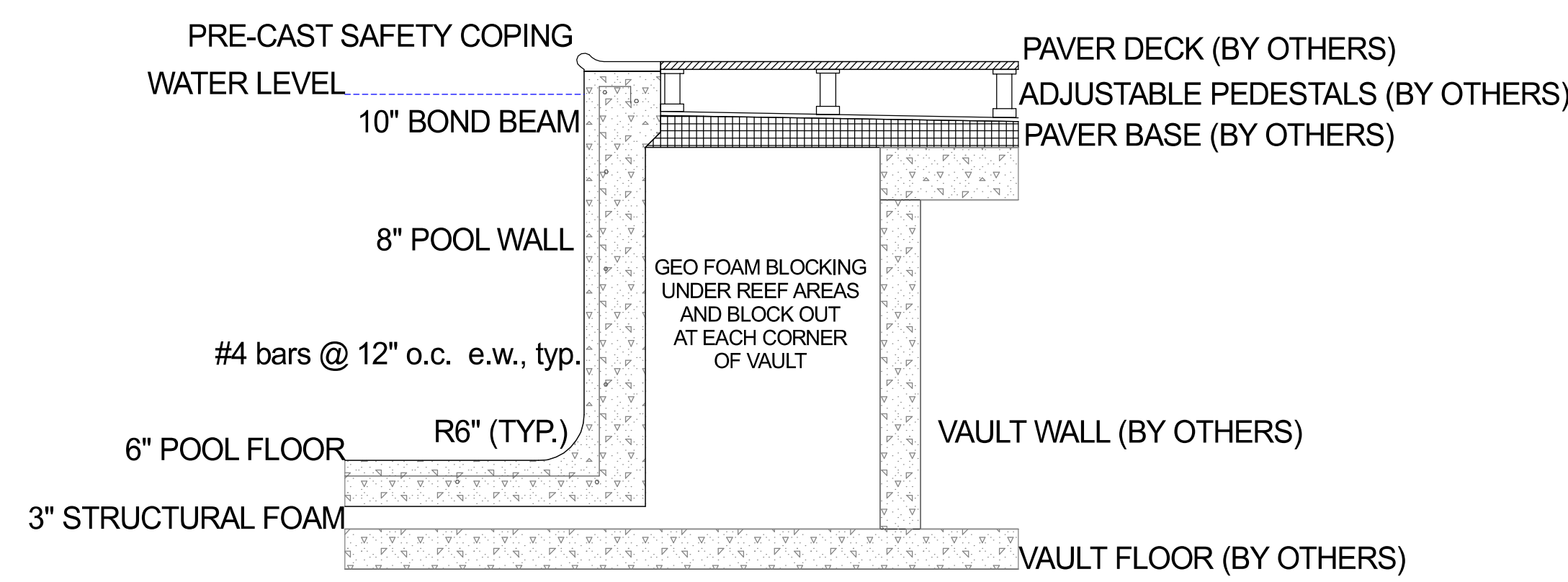
Summit at West Pryor
940 NW Pryor Road
Lee's Summit, MO 64081

Plan Date:
08.10.20 rev2

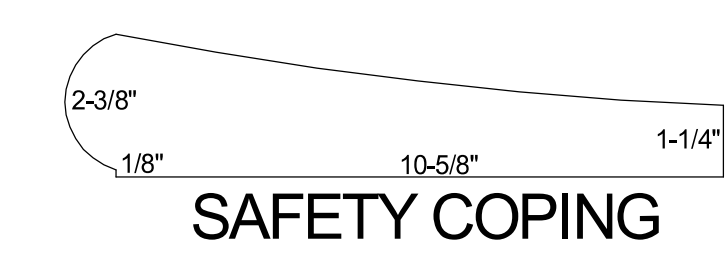
Drawn By: DN

SHEET NO.

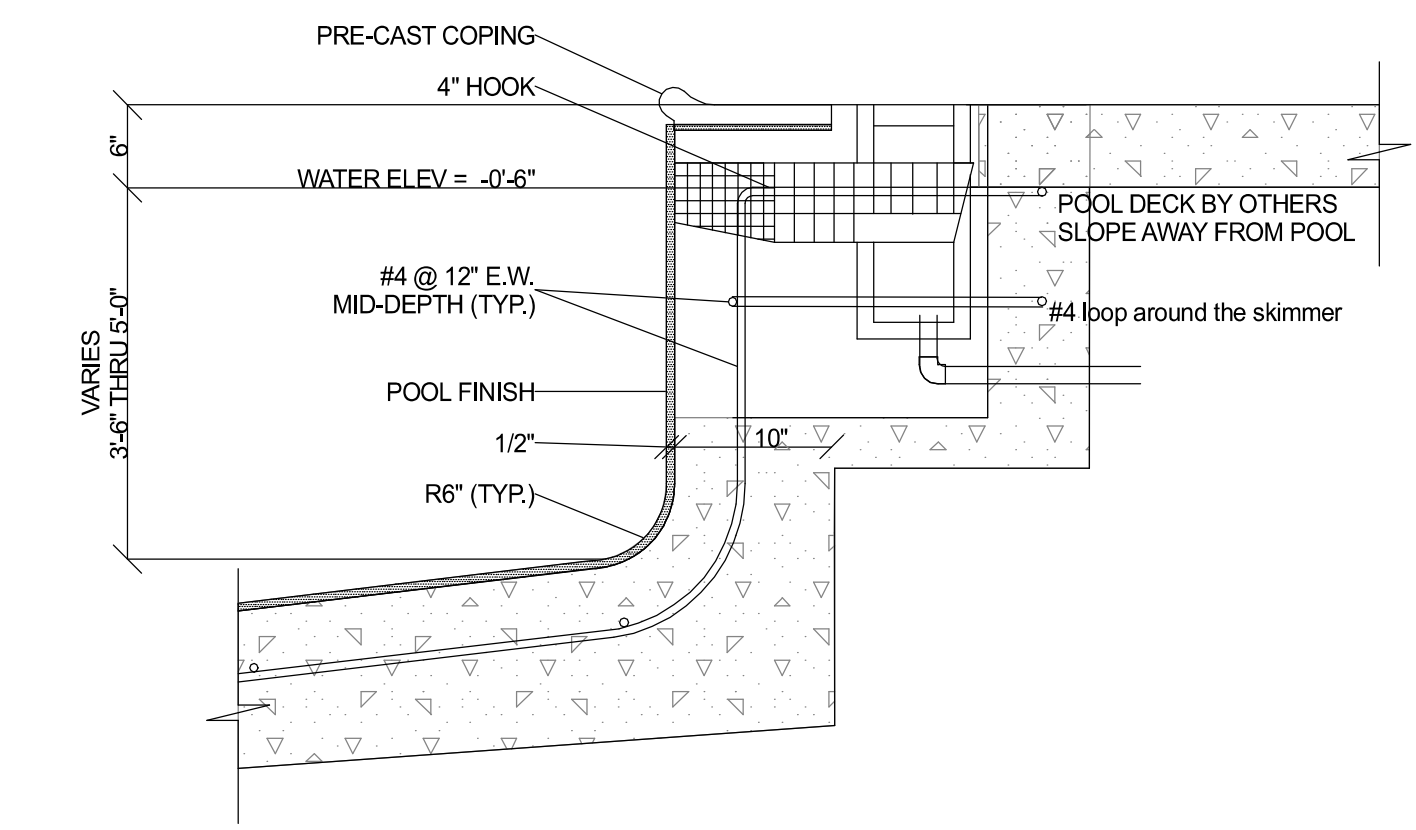
SD6.01



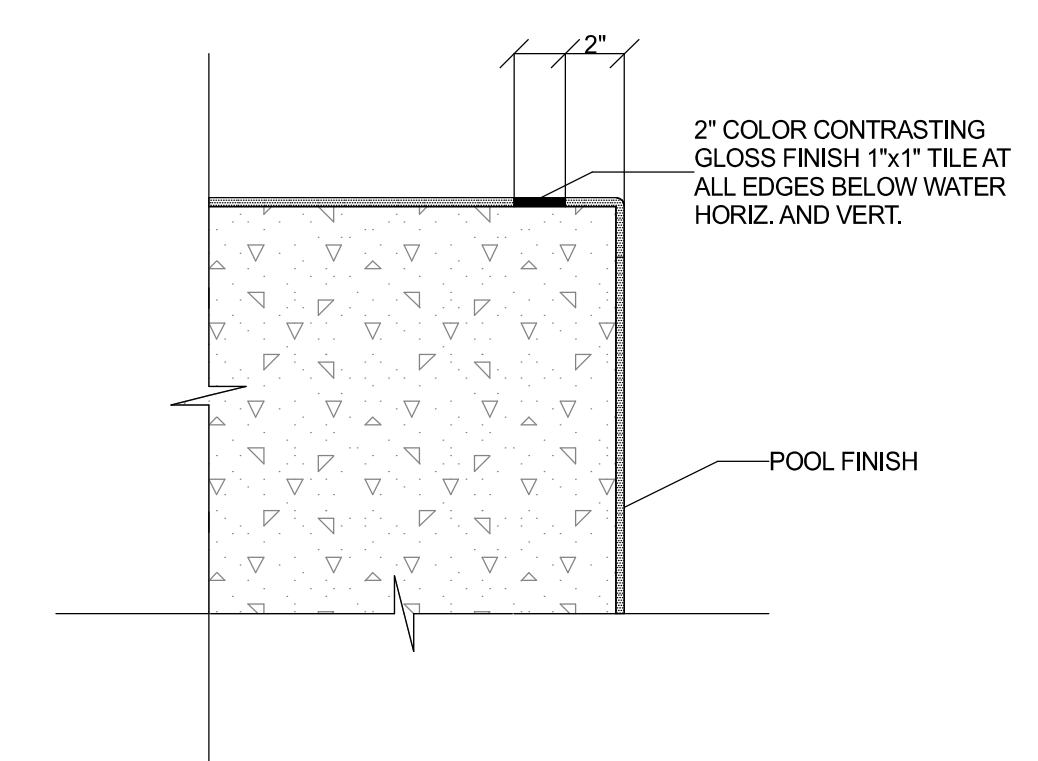
TYPICAL POOL WALL SECTION
NO SCALE



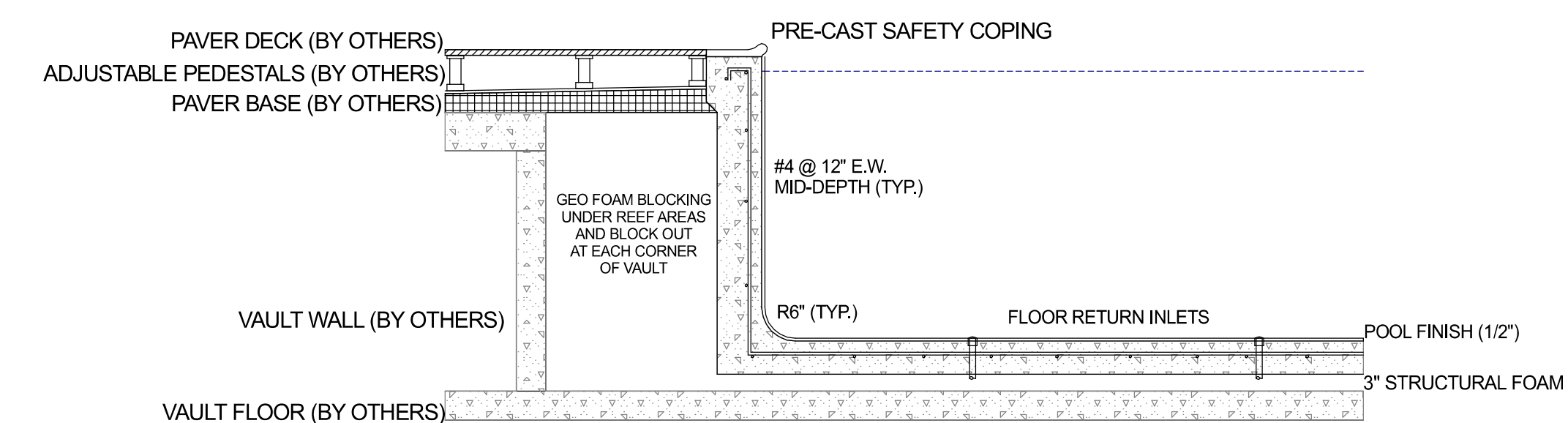
SAFETY COPING



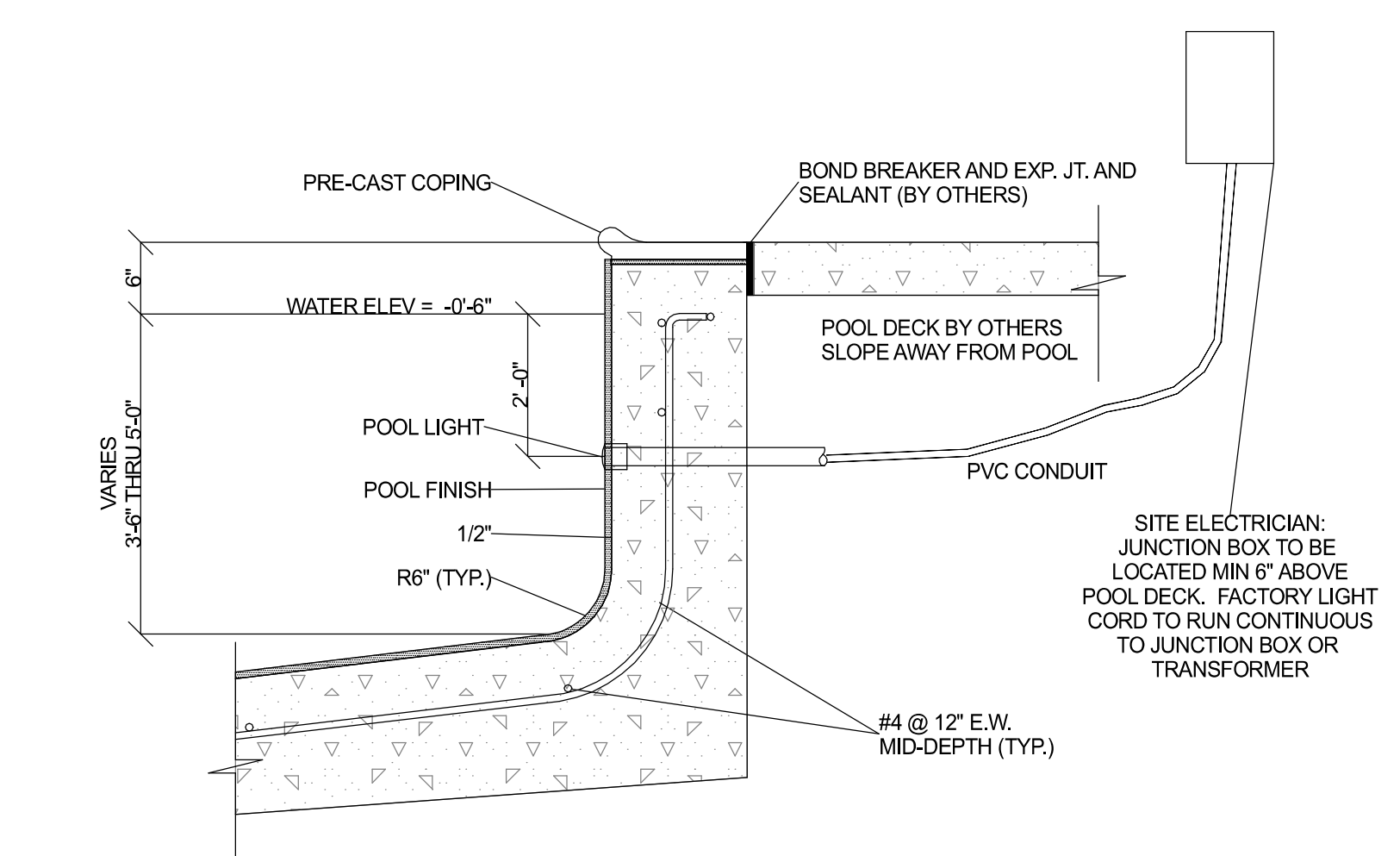
TYPICAL POOL SKIMMER SECTION
NO SCALE



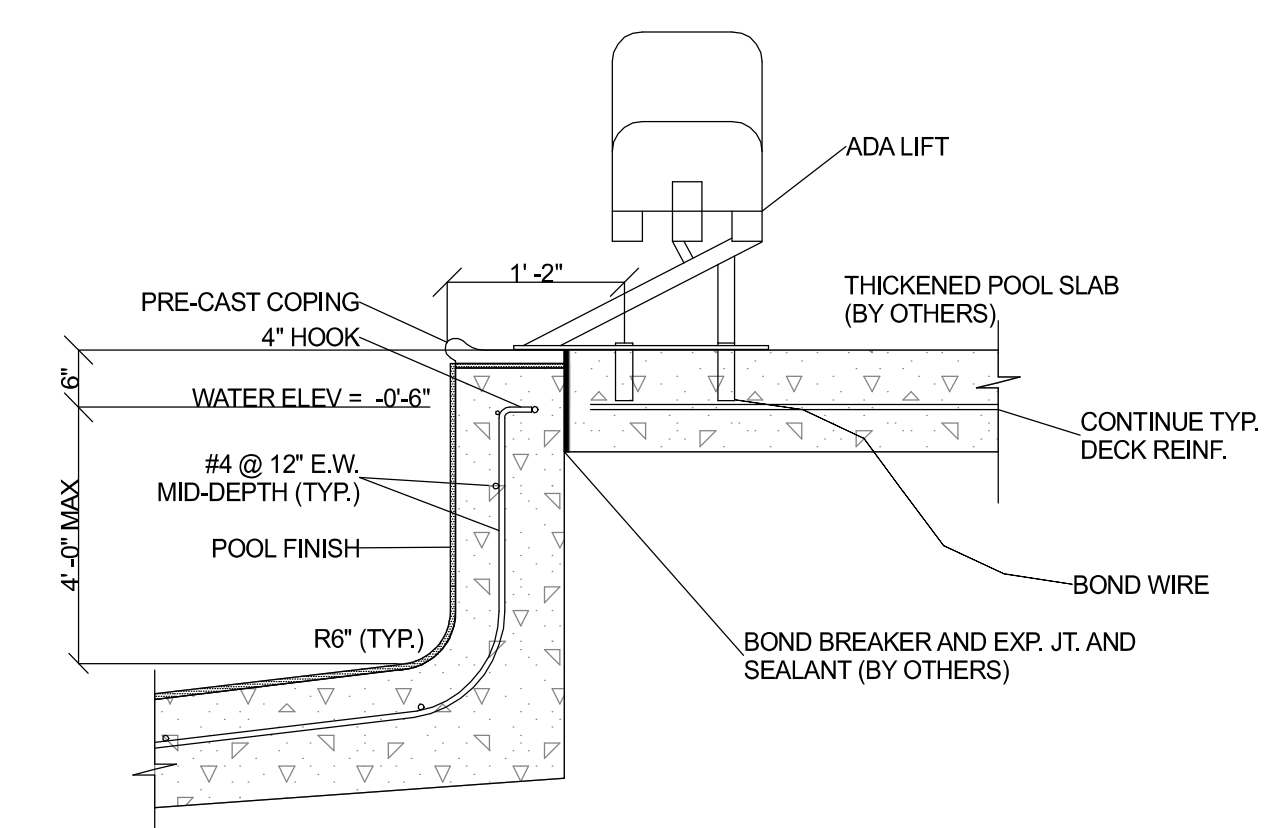
STAIR TREAD AND UNDER WATER EDGE DETAIL
NO SCALE



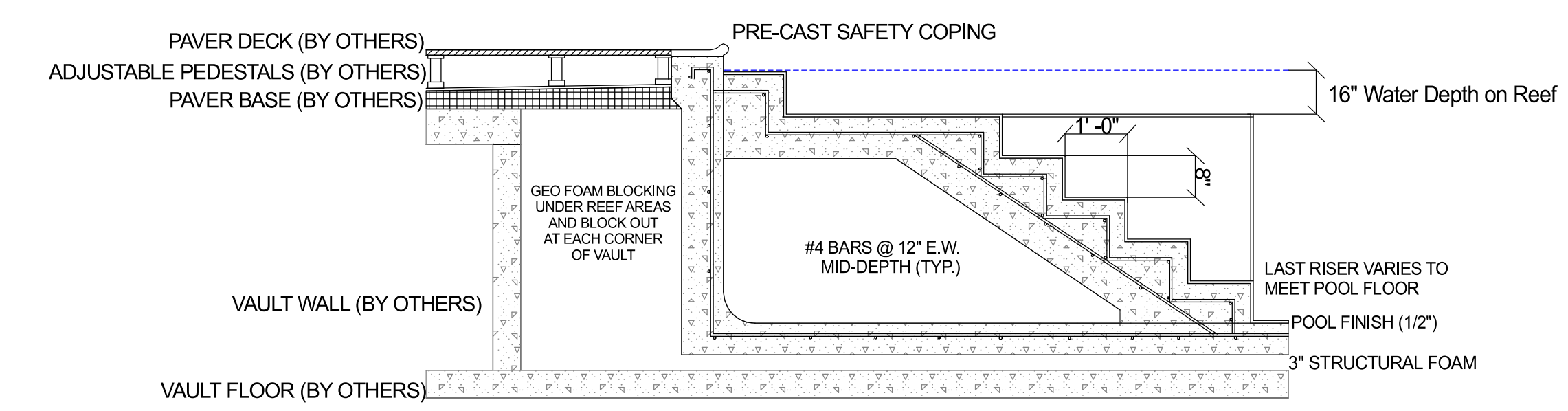
POOL RETURN DETAIL
NO SCALE



POOL LIGHT SECTION
NO SCALE



POOL ADA LIFT SECTION
NO SCALE



REEF STAIR DETAIL
NO SCALE



Summit at West Pryor
940 NW Pryor Road
Lee's Summit, MO 64081

Plan Date:
08.10.20 rev2

Drawn By: DN

SHEET NO.
SD8.01

MIDWEST CUSTOM POOLS
600 Lincoln Street
Lawrence, KS 66044
P: 785.843.9119
F: 785.843.6524
MidwestCustomPools.com