

RESIDENTIAL ENGINEERING SERVICES, LLC  
SHOP DRAWING / SUBMITTAL REVIEW

APPROVED

SUBMITTAL WAS REVIEWED FOR DESIGN CONFORMITY  
AND GENERAL CONFORMANCE TO CONTRACT  
DOCUMENTS ONLY. THE CONTRACTOR IS RESPONSIBLE  
FOR CONFIRMING AND CORRELATING DIMENSIONS AT  
JOBSITE FOR TOLERANCE, CLEARANCE, QUANTITIES,  
FABRICATION PROCESSES AND  
TECHNIQUES OF CONSTRUCTION, COORDINATION OF  
HIS OR HER WORK WITH OTHER TRADES AND FULL  
COMPLIANCE WITH CONTRACT DOCUMENTS.

REVIEWED BY:  
RESIDENTIAL ENGINEERING SERVICES, LLC

Brad A. Huvol, P.E.

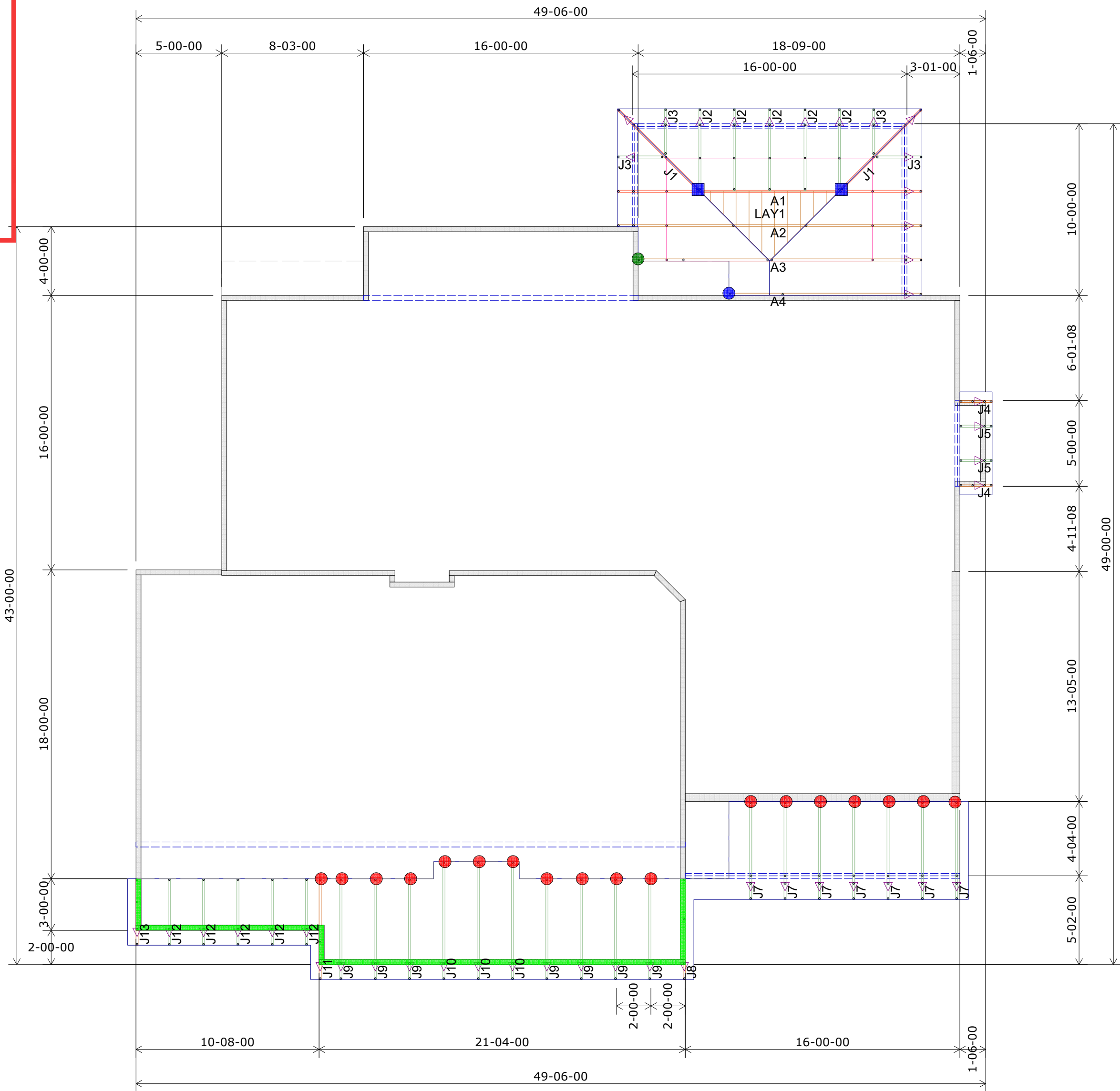


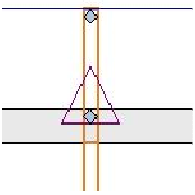
Plate Heights 9-01-02 U.N.O.	
	8-01-02

RELEASE FOR  
CONSTRUCTION  
AS NOTED ON PLANS REVIEW  
DEVELOPMENT SERVICES  
LEE'S SUMMIT, MISSOURI

07/29/2020

HANGER SCHEDULE		Quantity
●	LUS24	19
●	LUS26	1
●	HUS26	8
▲	HHUS26-2	0
▲	HGUS26-2	0
▲	HGUS28-3	0
■	LTHJA26	0
■	TJC37	2
■	TJC57	0
▲	HTS20	0

Triangle denotes the left end  
of the Truss as it appears on  
the Engineered Drawings  
provided.



Unless otherwise specified  
by Engineer Of Record,  
Wheeler Lumber, LLC  
recommends an uplift  
connection at each bearing  
point per the following:

# of Uplift	Connector
0 - 495:	(1) H2.5A
495 - 990:	(2) H2.5A
990 - 1245:	(1) HTS20

Installation per Simpson  
Strong-Tie guidelines.

For Reactions greater than  
1245#, refer to EOR.

SUMMIT HOMES	
Customer	Lot 94 The Manor at Stoney Creek
Job Name	4408 SW Alabaster Circle
Job Site Address	Lee's Summit
City,	State
Designer	Chance 785-746-4240
7/8/2020	Job # 400399

THIS IS A TRUSS PLACEMENT DIAGRAM ONLY. These trusses are designed as individual building components to be incorporated into the building design at the specification of the building designer. See individual design sheets for each truss design identified on the placement drawing. The building designer is responsible for temporary and permanent bracing of the trusses during construction. The building designer is responsible for the overall bracing of the building, including the walls and columns. The responsibility of the building designer for overall bracing of the building is not a function of the wood trusses available from the Truss Plate Institute, 581 Dornino Drive, Madison, WI 53179.

THIS LAYOUT IS THE SOLE SOURCE FOR FABRICATION OF TRUSSES AND VOIDS ALL PREVIOUS ARCHITECTURAL OR OTHER TRUSS LAYOUTS. REVIEW AND APPROVAL OF THIS LAYOUT MUST BE RECEIVED BEFORE ANY TRUSSES WILL BE BUILT. VERIFY ALL CONDITIONS TO INSURE AGAINST CHANGES THAT WILL RESULT IN EXTRA CHARGES TO YOU.

Wheeler Lumber  
1959 Old Hwy 50 NE  
Waverly, KS 66871



1st Floor Truss Layout  
Scale: 3/16" = 1'

RESIDENTIAL ENGINEERING SERVICES, LLC  
SHOP DRAWING / SUBMITTAL REVIEW

APPROVED

SUBMITTAL WAS REVIEWED FOR DESIGN CONFORMITY  
AND GENERAL CONFORMANCE TO CONTRACT  
DOCUMENTS ONLY. THE CONTRACTOR IS RESPONSIBLE  
FOR CONFIRMING AND CORRELATING DIMENSIONS AT  
JOBSITE FOR TOLERANCE, CLEARANCE, QUANTITIES,  
FABRICATION PROCESSES AND  
TECHNIQUES OF CONSTRUCTION, COORDINATION OF  
HIS OR HER WORK WITH OTHER TRADES AND FULL  
COMPLIANCE WITH CONTRACT DOCUMENTS.

REVIEWED BY:  
RESIDENTIAL ENGINEERING SERVICES, LLC

7/21/20  
Brad A. Muxol, P.E.

