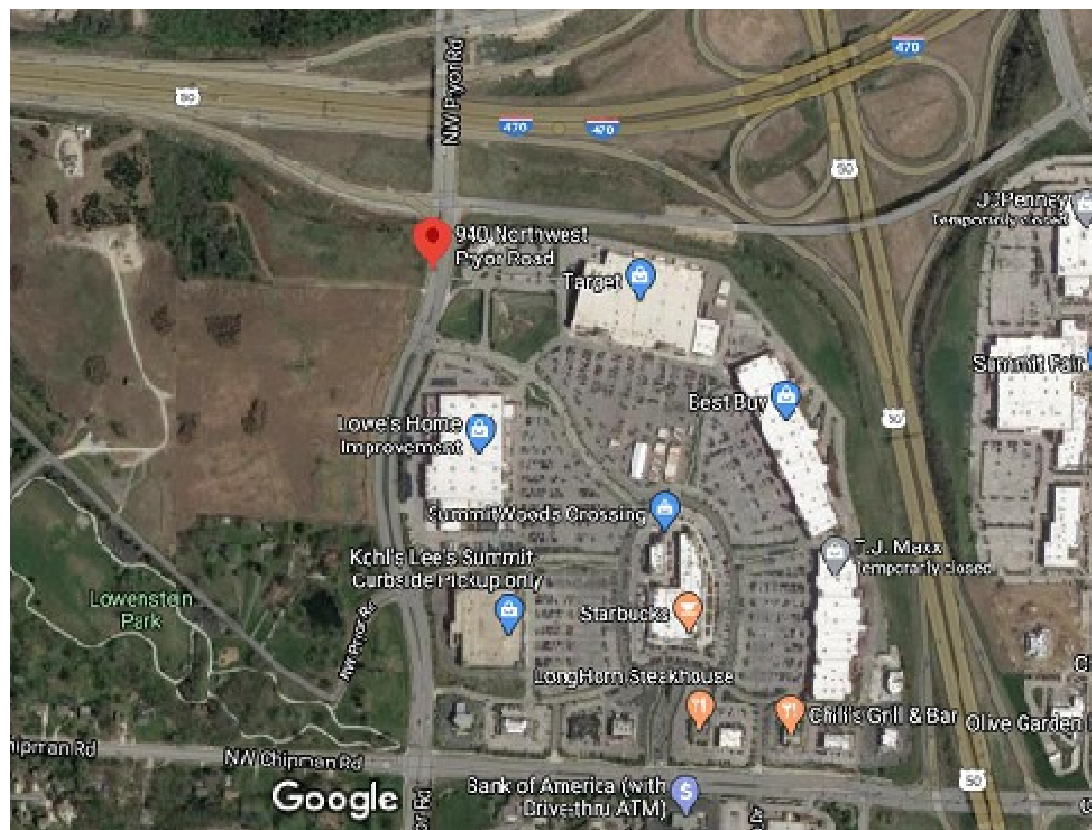


# SUMMIT AT WEST PRYOR

## PROJECT INFORMATION

STATE: MISSOURI  
COUNTY: JACKSON  
CITY: LEE'S SUMMIT  
TYPE: NON-DIVING POOL  
SCOPE: SINGLE BODY POOL  
CONSTRUCTION METHOD: SHOTCRETE  
SANITATION: CHLORINE  
HEATED: NATURAL GAS

## VICINITY MAP



## PROJECT TEAM

**MIDWEST CUSTOM POOLS**  
  
GLEN WESTERVELT, PRESIDENT  
785.766.1111  
GLEN@MIDWESTCUSTOMPOOLS.COM  
  
CLINT PINNICK, PROJECT MANAGER  
785.979.4955  
CLINT@MIDWESTCUSTOMPOOLS.COM

## POOL DATA

PERIMETER: 224 - FT  
  
SURFACE AREA: 2050 - SQFT  
  
APPROXIMATE VOLUME: 45,000 - GALLONS  
  
MINIMUM TURNOVER: 4 TIMES PER 24 HRS  
  
DESIGNED FLOW RATE: 125 - GPM

## SAFETY

ALL DOORS LEADING TO POOL AREA TO HAVE KEY FOB LOCKS  
  
BODY HOOK AND THROWABLE FLOATATION DEVICE ON 50' ROPE TO BE LOCATED WITHIN SITE OF THE POOL AND BE ACCESSABLE TO ALL USERS OF THE POOL  
  
ALL SIGNAGE TO BE PROVIDED BY THE OWNER AND SHALL MEET THE HEALTH DEPT REQUIREMENTS

## GENERAL NOTES

- > ANY CHANGES IN CONSTRUCTION PLANS OR EQUIPMENT MUST BE APPROVED BY THE COUNTY HEALTH DEPARTMENT. CHANGES MAY REQUIRE ADDITIONAL PLAN CHECK FEES AND RE-SUBMITTAL.
- > POOL PLAN APPROVAL DOES NOT AUTHORIZE THE VIOLATION OF ANY LAW, ORDINANCE, OR REGULATION AND FINAL APPROVAL IS SUBJECT TO FIELD INSPECTION.
- > ALL EQUIPMENT SHALL BE INSTALLED PER MANUFACTURER'S INSTRUCTIONS.

## GENERAL NOTES

- > ALL EQUIPMENT AND MATERIALS NOT SHOWN OR SPECIFIED ON THESE PLANS, BUT REQUIRED TO COMPLETE THIS PROJECT, SHALL BE SUPPLIED BY THE POOL CONTRACTOR AS PART OF THIS CONTRACT WORK.
- > REINFORCING STEEL OF ALL AQUATIC FEATURES SHALL BE BONDED WITH A #8 COPPER WIRE. TIED BOND TO EACH MECHANICAL SYSTEM AND ALL RAIL ANCHORS AND METAL WITHIN 5 FT OF POOL EDGE.

## GENERAL NOTES

- > ALL STEEL TO BE GRADE 40, #4 BAR AND A MINIMUM OF 12" ON CENTER EACH WAY HORIZONTAL AND VERTICAL. DAM WALLS 12" THICK TO HAVE A DOUBLE MAT OF STEEL
- > REINFORCING STEEL TO BE PLACED A MINIMUM OF 2" BELOW EXPOSED FACE OF CONCRETE

## SHEET INDEX

SD0.00 COVER SHEET  
SD1.01 SUBMITTALS  
SD2.01 LAYOUT PLAN  
SD3.01 PLUMBING PLAN - SUCTION  
SD3.02 PLUMBING PLAN - RETURN  
SD4.01 LIGHTING PLAN  
SD5.01 BONDING PLAN  
SD6.01 PROFILE & REBAR PLAN  
SD8.01 DETAILS

## SPECIFICATIONS

- > 4 FT. MAX WATER DEPTH
- > (2) MAIN DRAINS
- > (9) SURFACE SKIMMERS
- > (9) RETURNS
- > (1) 3 HP VARIABLE SPEED CIRCULATION PUMP
- > (12) LED LIGHTS
- > (1) 48" SAND FILTER
- > (1) LIQUID CHLORINE SANITATION SYSTEM
- > (1) 400K BTU ASME NATURAL GAS HEATER
- > (1) ADA CHAIR LIFT
- > INTELLICHEM CHEMICAL AUTOMATION W/ ACID & CHLORINE INJECTION SYSTEM
- > AUTOFILL WATER LEVEL SYSTEM
- > WATER LINE TILE, STANDARD
- > DEPTH MARKER TILES IN WATER LINE AND COPING
- > SUPER BLUE QUARTZ INTERIOR FINISH
- > MARKER RIBBON, 2 ROWS OF 1" TILE, STANDARD
- > SAFETY GRIP COPING
- > GEO FOAM FORMING SYSTEM

## CODE COMPLIANCE

- > ANSI POOL AND SPA STANDARD TO PREVENT SUCTION ENTRAPMENT
- > VIRGINIA GRAEME BAKER SAFETY ACT
- > COUNTY ENVIRONMENTAL SANITARY CODE
- > COUNTY CODE OF REGULATIONS FOR BUILDINGS AND CONSTRUCTION.

MIDWEST CUSTOM POOLS  
600 Lincoln Street  
Lawrence, KS 66044  
P. 785.843.9119  
F. 785.843.6524  
MidwestCustomPools.com



**Summit at West Pryor**  
940 NW Pryor Road  
Lee's Summit, MO 64081

Plan Date:  
05.26.2020

Drawn By: DN

SHEET NO.  
**SD0.00**



PROVIDED BY OTHERS

[illegible]



**SPECTRUM**  
Aquatics  
A Division of **WATTS**

## ADA Compliant *Lifts* SPECTRUM Motion Trek 350

*The Motion Trek 350 is an ADA compliant battery powered lift that is self operable from the deck and water with a robust operating system. The Motion Trek 350 is designed for in-ground pools and spas.*



- Fully ADA Compliant
- 350 pound operating load capacity
- Self operable from the deck and water
- 90 lifts per battery charge
- All stainless steel construction (electropolished 304L grade)
- Coated with Spectra Shield® for maximum corrosion protection
- Stabilizer bar significantly improves lift stability during transfer
- Spacious seat with excellent lumbar support designed for ease of transfer
- Rotationally and vertically powered with 360 degree continuous powered rotation
- Rotationaly Robust Operating System and Actuator outperforms the competition
- Accommodates pool wall setback of 6" to 22" and water draft up to 12"
- Easy to install, even into existing concrete decks
- Improved rotation system for a smooth ride

**Part# 153121 – LIFT INCLUDES:**

- One watertight handheld remote control
- Battery and battery charger
- Two armrests

**ADDITIONAL OPTIONS:**

  
**Lift Cover**  
 #153127

  
**Lift Kit**  
 #153128

  
**Battery**  
 #153129




7100 Spectrum Lane • Madison, WI 53703 • 800.397.0056 • SPECTRUM.AQUATICS.COM

973.932.0050 • 916.292.0050

Accessories • P-201

## Stair Rails – 3-Bend

Three-Bend

Taking 1/8" OD

Wall Thickness .049" or .062"

Standard Sizes 304 or 316, Marine Grade\*\* (add HSG to part number)

Bends: 90° Radius

Options: Powder-coating and Stainless/Salt Water Available

Recommended Anchors: A-440/B (order separately)

Recommended sealant: EP-100 (order separately)

\*\* Minimum wall thickness is .035 for Commercial

\*\* Minimum requirement for salt pools is 316L Marine Grade

Model No.	Description	A	B	C	D	E	Height	Length	Wt. Lbs.	Height
3B-04	4" 3-BEND	20"	4" 0"	8"	52"	20"	14-02 1/4"	60"	42"	2"
							5-00 1/2"	30 1/2"	30 1/2"	30 1/2"
3B-06	6" 3-BEND	30"	6" 0"	8"	52"	20"	15-04 1/4"	72"	62"	2"
							6-00 1/2"	30 1/2"	30 1/2"	30 1/2"
3B-08	8" 3-BEND	32"	8" 0"	8"	52"	20"	16-02 1/4"	38"	42"	2"
							6-00 1/2"	30 1/2"	30 1/2"	30 1/2"
3B-10	10" 3-BEND	40"	10" 0"	8"	52"	20"	18-03 1/4"	60"	62"	2"
							6-00 1/2"	30 1/2"	30 1/2"	30 1/2"
3B-16	16" 3-BEND	52"	16" 0"	34"	34"	20"	18-04 1/4"	90"	42"	2"
							6-00 1/2"	20 1/2"	30 1/2"	30 1/2"
3B-17	7" 3-1/4" 3-B	30"	7" 0"	0"	0"	0"	18-04 1/4"	90"	42"	2"
							6-00 1/2"	20 1/2"	30 1/2"	30 1/2"
3B-20	20" 3-BEND	52"	20" 0"	34"	34"	20"	21-00 1/4"	100"	42"	2"
							10-10 1/2"	20 1/2"	30 1/2"	30 1/2"

### Notes:

1. Add .07 HSG requirement for 304 and Add .02 HSG to the part number.

2. Add .02 HSG requirement for 316 and Add .02 HSG to the part number.

3. Standard length is 108 inches. For the part number 20" 3-BEND, standard length and bending will be the part number.

4. For 20" bend length in this table, add 12 inches to the part number for 12" bend length in this table.

**SR Smith.**

[www.srsmith.com](http://www.srsmith.com) / 800.824.4397  
 10001 1<sup>st</sup> Street, S.E. • Kent, WA 98032 • USA • 206.875.8200  
 Fax: 206.875.8201 • Email: [info@srsmith.com](mailto:info@srsmith.com), [usa@srsmith.com](mailto:usa@srsmith.com)

# GLÖBRITE® POOL AND SPA LED LIGHTS



## ADD THE MAGIC AND VIBRANCY OF WHITE LED LIGHTING

Glöbrite White LED lights are engineered with the brightest, most efficient LED light technology on the market today.

- LED array creates powerful illumination with natural blue-white energy efficiency.
- Available in 150 watts to deliver the equivalent of 150 watts of incandescent light.
- Two driving lights enhance the beauty of water features, and create a new level of lighting.
- Savings add up with extended service life and energy efficiency.



**ENERGY STAR**  
Certified  
Product



CircleView™ and BlueGlow™ retail available.

Contact us to learn more about Glöbrite lights.

**AVAILABLE FROM:**



1-800-950-5050 • 1-877-882-1122 • [WWW.PENTAIR.COM](http://www.pentair.com)

© 2009 Pentair Pool and Spa, Inc. Pentair, the Pentair logo, BlueGlow, CircleView, and the Pentair logo are registered trademarks of Pentair Pool and Spa, Inc. All other trademarks are the property of their respective owners. Pentair, the Pentair logo, BlueGlow, CircleView, and the Pentair logo are registered trademarks of Pentair Pool and Spa, Inc. All other trademarks are the property of their respective owners. Pentair, the Pentair logo, BlueGlow, CircleView, and the Pentair logo are registered trademarks of Pentair Pool and Spa, Inc. All other trademarks are the property of their respective owners.

**PUMPS • FILTERS • HEATERS • HOT PUMPS • AUTOMATION • LIGHTING • CLEANERS • SANITIZERS • WATER FEATURES • MAINTENANCE PRODUCTS**

[Pentair.com](http://Pentair.com)

[illegible]

# Model: PX100 and PX100S - 100 W Transformers

INPUT: 120 VAC, OUTPUT: 12 VAC or 14 VAC

## Model: PX300 and PX300S - 300 W Transformers

INPUT: 120 VAC, OUTPUT: 12 VAC, 13 VAC or 14 VAC

Suitable for direct connection to underwater lights and for Indoor/Outdoor installations except in CANADA - Low Voltage Landscape Lighting Installation - Outdoor only.

Read and follow the safety instructions listed below and other basic safety precautions before installation or operation of this transformer and related associated equipment.

### ⚠ WARNING Risk of Fire or Electrical Shock

- 1. If you discover the transformer is getting so hot through a building structure, repeated against materials, be connected.
- 2. Do not add wiring to transformer.
- 3. Do not exceed the maximum rating of individual components, wiring design, and current carrying capacity of conductors.
- 4. Switch cable for each secondary output in accordance with table in this manual.
- 5. Select ground connection to secondary built into transformer.
- 6. For landscape lighting applications, low voltage cable shall be buried a minimum of 6 inches (15.2 cm) in order to connect to the main low voltage cable.

## GENERAL INFORMATION

These Safety Transformers are specifically designed to be used in 120 volt AC power lines, to illuminate fixtures and outdoor garden lights. The transformer is designed to be used in 120 volt AC power lines. The transformer will disconnect power to the transformer in the case of defect or overload. These transformers are suitable for direct connection to Underwater Pool and Spa lights.


### SPECIFICATIONS

Enclosure Size: 7 1/4" (19.4 cm) high x 5 1/2" (13.3 cm) wide x 4 3/8" (11.3 cm) deep. Mounting brackets top and bottom.

Enclosures Types: (A) 0.040" (1.0 mm) thick aluminum plate with electrostatically applied beige coating. (B) 0.035" stainless steel.

Knockouts: Total of ten 1/4" (6.4 mm) combination.

Connections: (2) right side, (2) left side, (2) back.



Model	Input VAC	Secondary Output VAC	Wattage Watt	Enclosure Type
PX100	120 VAC 1.0 Amp	100 VAC	12 or 14	A
PX100S	120 VAC 1.0 Amp	100 VAC	12 or 14	B
PX300	120 VAC 2.5 Amp	300 VAC	12, 13, 14 or 16	A
PX300S	120 VAC 2.5 Amp	300 VAC	12, 13, 14 or 16	B

\*All dimensions ± 0.015 in. (0.4 mm)

1

# In-Ground Skimmers FOR COORED POOLS

Hayward In-ground skimmers are the preferred choice of professional pool builders. Engineered for residential and commercial applications, these large capacity skimmers are manufactured to Hayward's superior quality standards. Their durable, variable construction is made of rugged ABS, and they've been designed and built without skirting ribs. Hayward skimmers come with multiple gasket connections for secure installation.

All Hayward skimmers are non-corrosive, non-conductive and virtually invisible in pools, no matter what Mother Nature does out.

## Skim-Master™ Series

Skim-Master is a non-corrosive, large capacity automatic surface skimmer featuring a 60-inch, longer proof access cover, self-adjusting 1° tilt with stainless steel setting for adjust strength, dual motors, and flow-rated internal components for pressure rating. The optional tilting system also provides a main drain-suctioner system and an automatic suction filter for low water conditions. No plug is used in maintenance, generating maximum strength and longevity. SP-1170S fixtures provide a finished surface over cast granite against weather or pond water sets. All Skim-Master Series skimmers are available with Float Valve and Equalizer Kit to meet specific local commercial requirements.

approved

underwater

Model Number	Top Size	Frame Style	Screen Type	Length	Height	Flow Rating	Product Description
SP1020	1 1/2" DIA	Round	1 1/2"	1'	4 1/2"	450 GPM	480 PSI rated upvc cover (plastic) meets and exceeds all safety codes, NSF and OSHA. Dual outlets, blow-down control ports for pressure rating.
SP1010S	1 1/2" DIA	Round	1 1/2"	1'	4 1/2"	450 GPM	
SP1012	2 1/2" DIA	Round	1 1/2"	1'	4 1/2"	450 GPM	
SP1010S	2 1/2" DIA	Round	1 1/2"	1'	4 1/2"	450 GPM	Same as SP-1012 with upvc incorporated with Stainless Steel Body

Available in 60 inch body length version. Also available in 60 inch body length with 1/2 inch screen mesh for fine filtration.  
Available with standard screen mesh or 1/2 inch screen mesh.

Manufactured by Hayward Pool Products, Inc.

**Summit at West Pryor**  
940 NW Pryor Road  
Lee's Summit, MO 64081

Plan Date: 05.26.2020

Drawn By: DN

SHEET NO.

**SD1.01**



The advertisement features a large, light-colored Pentair IntelliFloXF VSF Variable Speed and Flow Pump as the central focus. The pump is shown from a three-quarter front view, highlighting its robust design and various connection ports. A dynamic splash of water is depicted on the left side of the pump, suggesting its use in water circulation. The background is a clean, light gray. At the top left, the Pentair logo is displayed. At the top right, the product name 'INTELLIFLOXF VSF' is enclosed in a dark rectangular box. Below the product name, the text 'INTELLIFLOXF VSF' and 'VARIABLE SPEED AND FLOW PUMP' are prominently displayed. A key benefit is listed: 'PRECISE FLOW CONTROL, AND HIGHEST AVAILABLE SAVINGS IN OUR MOST EFFICIENT PUMP.' At the bottom left, the 'TRADEGRADE BY PENTAIR' logo is visible. At the bottom right, the website 'pentairpools.com' is provided. The overall layout is professional and emphasizes the pump's efficiency and performance.




### Ⓜ PAK® Roll Top Hardcover Spill Pallet

PAK6501 holds (2) 55 gal. Plastic or Steel Drums, (6) 55 gal. 41.25" x 74", (6) 55 gal. Capacity Drums.

Load your drums into our roomy roll top hard cover for all-weather protection and liquid containment. You don't even have to remove pumps and funnels!

- Roll top slides up for easy access to drum tops while the rest of the unit stays closed; store drums with pumps or funnels in place
- Low-profile pallet with pump catches leaks, drips and spills while keeping drum tops and accessories within reach
- Weather-resistant design prevents contaminants from entering stormwater
- Heavy-duty construction allows hardcover and pallet to be filled by a forklift with drums in place
- Low-density polyethylene (LDPE) with UV inhibitors resists UV rays, rust, corrosion and most chemicals for long, trouble-free life
- Ergonomically designed roll top only goes down to waist height to eliminate bending and reaching
- Doors and roll top can be secured with a padlock (sold separately)
- Durable swing-out doors on front for easy loading and unloading
- Optional 17" drain plug lets you empty pump without removing drums or grating




Item#	Description	Dimensions	Weight
PAK6501-KWD	Kneaded Door - Without Drain	67.5" W x 41.25" D x 74" H	345 lbs.
PAK6501-KWD	Kneaded Door - With Drain	67.5" W x 41.25" D x 74" H	345 lbs.
PAK6501-AWD	Assembled - Without Drain	67.5" W x 41.25" D x 74" H	345 lbs.
PAK6501-AWD	Assembled - With Drain	67.5" W x 41.25" D x 74" H	345 lbs.

**Metric Equivalent:**

Item#	Description	Dimensions	Weight
PAK6501-KWD	Kneaded Door - Without Drain	171.5cm W x 104.8cm D x 184.8cm H	156.0 kg
PAK6501-KWD	Kneaded Door - With Drain	171.5cm W x 104.8cm D x 184.8cm H	156.0 kg

## PROVIDED BY OTHERS

### NOTE

Each 90-degree elbow reduces the maximum horizontal PVC in intake duct run by 12 feet and each 45-degree elbow in the PVC or in installed duct reduces the maximum run by 6 feet. See the Table 1 for the maximum lengths using 90-degree elbows.

**Construction 3 in. PVC Pipe  
Direct Air Intake Duct Requirements**

Conditions to Table 1 PVC Exhaust or Intake		
In. of 45° Elbow	Maximum Length (ft. x in.)	
0	255 ft. 0 in.	
1	243 ft. 0 in.	
2	231 ft. 0 in.	
3	219 ft. 0 in.	
4	207 ft. 0 in.	

Notes:

### ⚠ WARNING!

DO NOT USE PVC PIPE FOR FLUE  
EXHAUST! FLUE EXHAUST  
VENT TEMPERATURES CAN BE IN  
EXCESS OF 400°F. FLUE EXHAUST  
VENT MUST BE CATEGORY I or  
CATEGORY II METAL VENT.

The diagram illustrates a direct air intake duct system for a boiler. Key components and labels include:

- 3" PVC Pipe**: The main intake duct.
- Flue Exhaust Vent Cap and Rain**: Located on the roof, provided by the installer.
- Chimney or Gas Vent (Category I or II)**: Connected to the boiler and the roof.
- Gas Exhaust Vent (Alternate Location)**: An alternative vent location on the roof.
- Boiler**: The central heating unit.
- Water**: Indicated near the boiler.
- 12" W/BS**: A label for a 12-inch wide by 8-inch standard boiler size.
- 1" W/BS**: A label for a 1-inch wide by 8-inch standard boiler size.
- 3" PVC Pipe**: Labeled at the connection to the boiler.
- 3" PVC Pipe (Alternate Location)**: Labeled near the roof connection.
- 3" PVC Pipe**: Labeled at the roof connection.
- 12" W/BS**: A label for a 12-inch wide by 8-inch standard boiler size.

**Direct Air Intake Duct with 3-inch PVC Pipe (Indoor Installation)**  
(MasterTemp® Header shown)

2

[illegible]

## SPECTRUM Aquatics A Division of C&B Lionex

# ADA COMPLIANT POOL Lifts SPECTRUM Motion Trek 350

The Motion Trek 350 is an ADA compliant battery powered lift that is self operable from the deck and water with a robust operating system. The Motion Trek 350 is designed for in-ground pools and spas.

- Fully ADA Compliant
- 350 pound operating load capacity
- Self operable from the deck and water
- 90 lifts per battery charge
- All stainless steel construction (polished/polished grade)
- Coated with Spectra Shield® for maximum corrosion protection
- Stabilizer bar significantly improves lift stability during transfer
- Spacious seat with excellent lumbar support designed for ease of transfer
- Rotationally and vertically powered with 350 degree continuous powered rotation
- Proprietary Robust Operating System and Actuator outperforms the competition
- Accommodates pool wall setback of 6" to 22" and water draft up to 12"
- Easy to install, even into existing concrete decks
- Improved rotation system for a smooth ride

**Part# 153121 - LIFE INCLUDES:**

- One watertight hardwired remote control
- Battery and battery charger
- Footrest
- Deck anchor
- Seat belt
- Two armrests

**ADDITIONAL OPTIONS:**

- **Lift Cover**  
KIT709
- **Lift Kit**  
KIT2121
- **Battery**  
KIT2007

7100 Spectrum Lake, Mason, NJ 08050 • 800-791-8056 • SPECTRUMAQUATICS.COM  
908-791-8056 • 9-5 PM EST

**PENTAIR**

**AUTOMATIC WATER FILLER**

# AUTOMATIC WATER FILLER


Protect your pool equipment by ensuring proper water level.

Failure to keep your water level right can result in damage to pool equipment. The Pentair automatic water filler protects your investment by using simple, reliable float, mechanicals to monitor and control the water level in your pool or spa. When water drops below a preset level, the unit enters in automatic mode until the proper level is restored. If water levels are high, the built-in overflow will save the right amount of water out of the system.



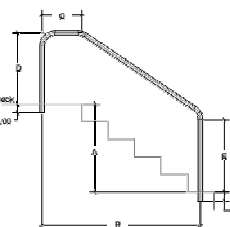
PENTAIR.COM

## Stair Rails – 3-Bend



\* Rating 120' CSD  
 \* Rail Thickness .090" or .060"  
 \* Stainless Steel 304 or 316L Marine Grade\*\* (Add .10G to part number)  
 \* Bends: 6° Radius  
 \* Options: Powder-coating and SelectShield Self-Protective available  
 \* Recommended anchors: AN4000 (order separately)  
 \* Recommended sealcoats: EPDM (order separately)  
 \* \*\* Minimum rail thickness is .005 for Customized  
 \* \*\*\* Minimum requirement for all posts is 316L Marine Grade

Three-Bend



Model No.	Description	A	B	C	D	E	Options	Weight	Length	Width	Height
3B-B-4	4" 30-02ND	30"	4" 0"	0"	0"	0"	14-020a	400'	42"	2"	42"
							14-030a	400'	42"	2"	42"
							14-10a	220'	42"	2"	42"
3B-B-6	6" 30-02ND	30"	6" 0"	0"	0"	0"	14-020a	380'	42"	2"	42"
							14-030a	380'	42"	2"	42"
							14-10a	220'	42"	2"	42"
3B-B-8	8" 30-02ND	30"	8" 0"	0"	0"	0"	14-020a	360'	42"	2"	42"
							14-030a	360'	42"	2"	42"
							14-10a	220'	42"	2"	42"
3B-B-7	7 3/4" 30-02ND	30"	7 3/4" 0"	0"	0"	0"	14-020a	340'	42"	2"	42"
							14-030a	340'	42"	2"	42"
							14-10a	220'	42"	2"	42"
3B-B-8	8" 30-02ND	30"	8" 0"	0"	0"	0"	14-020a	320'	42"	2"	42"
							14-030a	320'	42"	2"	42"
							14-10a	220'	42"	2"	42"

**Notes:**

1. Add .10G to the part number for .090" wall thickness and .060" to the part number for .060" wall.

2. Customizable: 12 to 60 feet in length for 30-02ND and 30-03ND and 60 to 120 feet for 30-04ND. 2' max per section for 12-02000 length in both. Add .10G per section for 12" maximum length in both.

**SR Smith**

10001 10th St., Suite 100, San Diego, CA 92121  
 Tel: 619.444.4444 Fax: 619.444.4444  
 Web: [www.srsmith.com](http://www.srsmith.com)

[www.srsmith.com](http://www.srsmith.com) / 800.824.6387  
 10001 10th St., Suite 100, San Diego, CA 92121  
 Tel: 619.444.4444 Fax: 619.444.4444  
 Web: [www.srsmith.com](http://www.srsmith.com)

## INTELLICHEM® COMMERCIAL WATER CHEMISTRY CONTROLLER

### ULTIMATE POOL CHEMICAL MANAGEMENT AND CONVENIENCE

Step up your pool's commercial IntelliChem pool chemical management system. The IntelliChem controller automatically monitors your pH and dissolved chlorine, and adjusts it all the right amount or chemicals to keep your pool clean, safer and look its very, very best.

At its IntelliChem continuously-checking and automatically dispensing the required chemicals, you and the kids (and pets) that play in the pool (and the pool house) can relax and enjoy the summer sun, while IntelliChem keeps your pool's pH and chlorine levels just where you want them.

With the included SmartView-GiB Interface, local or remote chemical control management is taken to a new level.

### STANDOUT FEATURES

- High-resolution chemical feedback and an in-pool float for precise water levels.
- Flow sensor monitors chemicals sent down without options from quaranting against flow readings and equipment load.
- Clear warning system: IntelliChem's unique IntelliFlow float alerts you when the system is going bad so you can get it fixed.
- IntelliChem's SmartView-GiB Interface lets you monitor your pool's pH and chlorine levels from anywhere.
- IntelliChem's IntelliFlow float lets you know when your water chemistry is perfectly in balance, and when it's not.
- The use of IntelliChem on PC offers the ability to keep track of pH and DPD levels and make adjustments locally or remotely.
- Compatible with IntelliChem® Fast Chlorine Dispenser, liquid feed pumps, and CO2 systems.
- Password protection prevents unwanted tampering or an accidental program change.
- Includes a water conditioner by preventing excess chemical addition either a 30-day period.

# GLÖBRITE® POOL AND SPA LED LIGHTS



## ADD THE MAGIC AND VIBRANCY OF WHITE LED LIGHTING

Glöbrite White LED lights are engineered with the brightest, most efficient LED light technology on the market today.

- LED array creates powerful illumination with natural blue-white energy efficiency.
- Automatically dimmable to deliver the equivalent of 100 watts of incandescent light.
- Two driving lights enhance the beauty of water features, and create a new level of lighting.
- Savings add up with extended service life and energy efficiency.



**ENERGY STAR**  
Certified  
Product



CircleView™ and XtraView™ retail available.

**Contact us to learn more about Glöbrite lights.**

**AVAILABLE FROM:**



1-800-950-5050 • 1-877-882-1122 • [WWW.PENTAIR.COM](http://www.pentair.com)

© 2009 Pentair Pool and Spa, Inc. Pentair, the Pentair logo, Glöbrite, CircleView, XtraView, and the Pentair logo are registered trademarks of Pentair Pool and Spa, Inc. All other trademarks are the property of their respective owners. Pentair, the Pentair logo, Glöbrite, CircleView, XtraView, and the Pentair logo are registered trademarks of Pentair Pool and Spa, Inc. All other trademarks are the property of their respective owners. Pentair, the Pentair logo, Glöbrite, CircleView, XtraView, and the Pentair logo are registered trademarks of Pentair Pool and Spa, Inc. All other trademarks are the property of their respective owners.

**pumps • filters • heaters • hot pumps • automation • lighting • cleaners • sanitizers • water features • maintenance products**

[illegible]

HISORABRITE COLOR AND WHITE LED LIGHT

Hisorabrite LED spot and floodlight

## Remarkably Easy Installation in New Pools and Retrofitting

There's no need for any additional lighting or wiring; everything is done properly, retrofits or upgrades!

- **Fit In Where Others Can't**  
Only 1.6 inches high, it's the same size with all light options
- **Efficient, Efficient Light**  
Energy saving, money saving LED efficiency means you'll need less than 100 LED per square foot
- **Outstanding Light Quality**  
No stroboscopy or hot spots. Excellent color and beam
- **No Heat Problem**  
Heatless in wet areas. 30° beam spread
- **Easy Installation**  
No need for any extra installation, versatility is built into the design. It's ready to go
- **Simple**  
No wires, no 120 volt connections, light
- **Ability Controlled**  
Color controlled, monochromatic LED, monochromatic
- **No Sealing Required**  
Sealing installation and seal materials
- **Ready for Expansion**  
Compatible with any ProSense automation system and the ProSense IntelliPool Controller
- **Small Cabinet**  
Space with lead cables and cable channel for ProSense IntelliPool and IntelliPool by LED Lighting
- **Available in Warm White**  
Available Warm White provides the gentle glow for ambient lighting, along with all the benefits of reliable, energy-saving, long performance LED technology.

### ORDERING INFORMATION

Part No.	Description
420-01	Monochrome, Color, 60° beam, Cast
420-02	Monochrome, Color, 120° beam, Cast
420-03	Monochrome, Color, 180° beam, Cast
420-04	Monochrome, White, 60° beam, Cast
420-05	Monochrome, White, 120° beam, Cast
420-06	Monochrome, White, 180° beam, Cast

800 Hisorabrite Inc. | 800.875.1676 | United States | 404.471.2721 | [www.hisorabrite.com](http://www.hisorabrite.com)

© 2014 Hisorabrite Inc. All rights reserved. Hisorabrite, the Hisorabrite logo, and IntelliPool are trademarks of Hisorabrite Inc. in the United States and other countries. All other trademarks are the property of their respective owners.

POOL & SPA LIGHTING SOLUTIONS

TRANE

THE MANUFACTURER OF  
COMMERCIAL HEATING, VENTILATION  
& AIR CONDITIONING (HVAC) SYSTEMS

# In-Ground Skimmers

FOR CONCRETE POOLS

Hayward in-ground pool skimmers are the preferred choice of professional pool builders. Engineered for residential and commercial applications, these large-capacity skimmers are manufactured by Hayward's renowned quality standards. Their durable, vertically constructed frames instead of rugged ABS and they've been designed without awkward joints. Hayward skimmers come with multiple plumbing connections for easier installation.

All Hayward skimmers are non-corrosive, non-conductive and totally **invisibly** invisible, no matter what Mother Nature does out.

## Skim-Master® Series

Skim-Master is a non-corrosive, large capacity automatic surface skimmer featuring a round, tamper proof access cover, self-adjusting 1" vent with dartsides that swing for robust strength, dual skimmer inlets, and threaded interior connections for pressure bedding. The optional floatswitches also provide a main drain-thru-skimmer system and an additional safety device for low water conditions. No plug is used in installing, providing primary strength and integrity. SP1010 skimmer provides a knockout overflow port that guards against overflow or pool water spill. All Skim-Master skimmers are available with float valve and liquid level float to meet specific local commercial requirements.

approved

Model Number	Top Cover Size	Skimmer Size	Flow Rate, GPM	Net Weight, LBS.	Product Description
SP1010	1 1/2" DIA	Round, 1 1/2" x 1"	1	5 lbs.	ABS body skimmer cover (float) only. Round skimmer body, tamper proof access cover, and self-adjusting 1" vent. No float valve. Ideal for residential use.
SP1012	1 1/2" DIA	Round, 1 1/2" x 1"	1	5 lbs.	Same as SP1010 plus with incorporated with Dartsides float valve.
SP1014	2" DIA	Round, 1 1/2" x 1"	1	5 lbs.	Same as SP1010 plus with incorporated with Dartsides float valve.

Available in 10, 20, 30, 40, 50, 60, 70, 80, 90, 100, 110, 120, 130, 140, 150, 160, 170, 180, 190, 200, 210, 220, 230, 240, 250, 260, 270, 280, 290, 300, 310, 320, 330, 340, 350, 360, 370, 380, 390, 400, 410, 420, 430, 440, 450, 460, 470, 480, 490, 500, 510, 520, 530, 540, 550, 560, 570, 580, 590, 600, 610, 620, 630, 640, 650, 660, 670, 680, 690, 700, 710, 720, 730, 740, 750, 760, 770, 780, 790, 800, 810, 820, 830, 840, 850, 860, 870, 880, 890, 900, 910, 920, 930, 940, 950, 960, 970, 980, 990, 1000, 1010, 1020, 1030, 1040, 1050, 1060, 1070, 1080, 1090, 1100, 1110, 1120, 1130, 1140, 1150, 1160, 1170, 1180, 1190, 1200, 1210, 1220, 1230, 1240, 1250, 1260, 1270, 1280, 1290, 1300, 1310, 1320, 1330, 1340, 1350, 1360, 1370, 1380, 1390, 1400, 1410, 1420, 1430, 1440, 1450, 1460, 1470, 1480, 1490, 1500, 1510, 1520, 1530, 1540, 1550, 1560, 1570, 1580, 1590, 1600, 1610, 1620, 1630, 1640, 1650, 1660, 1670, 1680, 1690, 1700, 1710, 1720, 1730, 1740, 1750, 1760, 1770, 1780, 1790, 1800, 1810, 1820, 1830, 1840, 1850, 1860, 1870, 1880, 1890, 1900, 1910, 1920, 1930, 1940, 1950, 1960, 1970, 1980, 1990, 2000, 2010, 2020, 2030, 2040, 2050, 2060, 2070, 2080, 2090, 2100, 2110, 2120, 2130, 2140, 2150, 2160, 2170, 2180, 2190, 2200, 2210, 2220, 2230, 2240, 2250, 2260, 2270, 2280, 2290, 2300, 2310, 2320, 2330, 2340, 2350, 2360, 2370, 2380, 2390, 2400, 2410, 2420, 2430, 2440, 2450, 2460, 2470, 2480, 2490, 2500, 2510, 2520, 2530, 2540, 2550, 2560, 2570, 2580, 2590, 2600, 2610, 2620, 2630, 2640, 2650, 2660, 2670, 2680, 2690, 2700, 2710, 2720, 2730, 2740, 2750, 2760, 2770, 2780, 2790, 2800, 2810, 2820, 2830, 2840, 2850, 2860, 2870, 2880, 2890, 2900, 2910, 2920, 2930, 2940, 2950, 2960, 2970, 2980, 2990, 3000, 3010, 3020, 3030, 3040, 3050, 3060, 3070, 3080, 3090, 3100, 3110, 3120, 3130, 3140, 3150, 3160, 3170, 3180, 3190, 3200, 3210, 3220, 3230, 3240, 3250, 3260, 3270, 3280, 3290, 3300, 3310, 3320, 3330, 3340, 3350, 3360, 3370, 3380, 3390, 3400, 3410, 3420, 3430, 3440, 3450, 3460, 3470, 3480, 3490, 3500, 3510, 3520, 3530, 3540, 3550, 3560, 3570, 3580, 3590, 3600, 3610, 3620, 3630, 3640, 3650, 3660, 3670, 3680, 3690, 3700, 3710, 3720, 3730, 3740, 3750, 3760, 3770, 3780, 3790, 3800, 3810, 3820, 3830, 3840, 3850, 3860, 3870, 3880, 3890, 3900, 3910, 3920, 3930, 3940, 3950, 3960, 3970, 3980, 3990, 4000, 4010, 4020, 4030, 4040, 4050, 4060, 4070, 4080, 4090, 4100, 4110, 4120, 4130, 4140, 4150, 4160, 4170, 4180, 4190, 4200, 4210, 4220, 4230, 4240, 4250, 4260, 4270, 4280, 4290, 4300, 4310, 4320, 4330, 4340, 4350, 4360, 4370, 4380, 4390, 4400, 4410, 4420, 4430, 4440, 4450, 4460, 4470, 4480, 4490, 4500, 4510, 4520, 4530, 4540, 4550, 4560, 4570, 4580, 4590, 4600, 4610, 4620, 4630, 4640, 4650, 4660, 4670, 4680, 4690, 4700, 4710, 4720, 4730, 4740, 4750, 4760, 4770, 4780, 4790, 4800, 4810, 4820, 4830, 4840, 4850, 4860, 4870, 4880, 4890, 4900, 4910, 4920, 4930, 4940, 4950, 4960, 4970, 4980, 4990, 5000, 5010, 5020, 5030, 5040, 5050, 5060, 5070, 5080, 5090, 5100, 5110, 5120, 5130, 5140, 5150, 5160, 5170, 5180, 5190, 5200,

**MIDWEST CUSTOM POOLS**  
600 Lincoln Street  
Lawrence, KS 66044  
P. 785.843.9119  
F. 785.843.6524  
MidwestCustomPools.com

The logo for Midwest Custom Pools features a stylized graphic of a swimmer in blue and green, with a yellow sun or circle above it. To the right of the graphic, the text "Midwest" is written in a large, bold, blue font, and "CUSTOM POOLS" is written in a smaller, blue, all-caps font below it.

06/05/2020

**Summit at West Pryor**  
940 NW Pryor Road  
Lee's Summit, MO 64081

Plan Date:  
05.26.2020

Drawn By: DN

SHEET NO.  
**SD1.01**



1.POOL DESIGN AND INSTALLATION SHALL COMPLY WITH ANSI/NSPI-5 2003

3. POOL DECK TO BE POURED IN PLACE CONCRETE AND SHALL DEVELOP MIN 4000 PSI COMPRESSIVE STRENGTH AT 28 DAYS

5. ALL REINFORCING STEEL TO BE GRADE 40 OF BETTER. LAP ALL BARS MIN OF 40 DIAMETERS. TIE AT LEAST 50% OF ALL LAPS WITH AT LEAST 16 ga WIRE OR EQUAL, BEND ALL TIES DOWN

7.OWNER WHERE POSSIBLE KEEP SURFACE OF CONCRETE MOIST FOR 3 TO 4 DAYS AFTER PLACEMENT

9.6" FROST PROOF, CERAMIC TILE SHALL BE PLACED AT WATERLINE OF POOL

11. POOL PIPING SHALL BE SCHEDULE 40, TYPE 1 OR 2, PVC RIGID, NSF APPROVED

13.POOL LIGHTS SHALL BE INSTALLED ACCORDING TO NEC ARTICLE 680

15. POOL BONDING: ALL METAL WITHIN 5'-0" OF POOL WATER SHALL BE BONDED WITH A CONTINUOUS #8 BARE COPPER BOND WIRE, USING APPROVED CONNECTORS ONLY, PER NEC ARTICLE 680. BOND WIRE SHALL RUN AROUND THE PERIMETER OF THE POOL SHELL REBAR AND THE POOL DECK REBAR. THE BOND WIRE SHALL TERMINATE AT THE POOL EQUIPMENT. ALL METAL RAIL GOODS (LADDERS, GRAB RAILS, ETC.) SHALL BE INSTALLED USING AN APPROVED DECK ANCHOR AND BONDED TO DECK REBAR

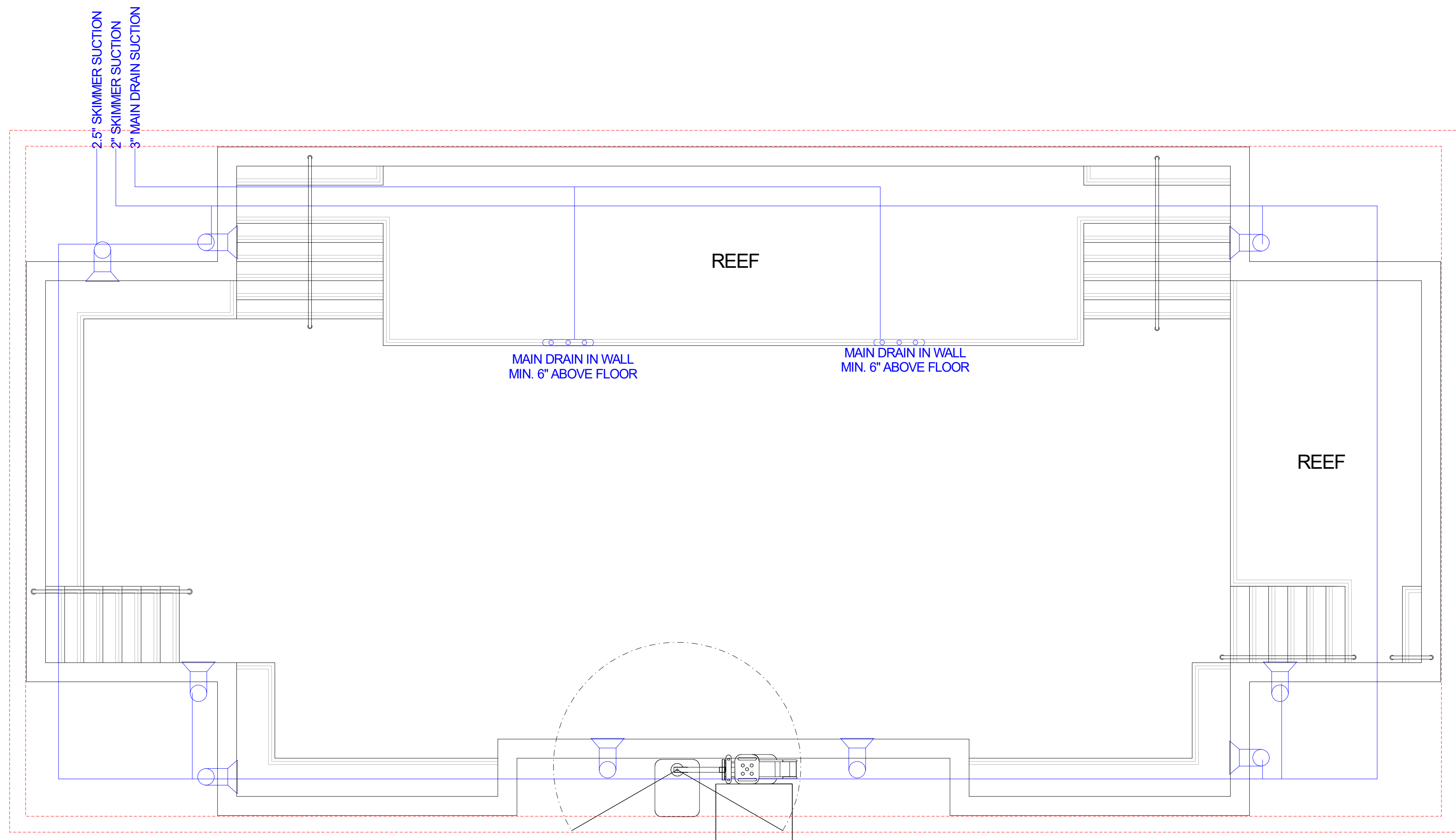
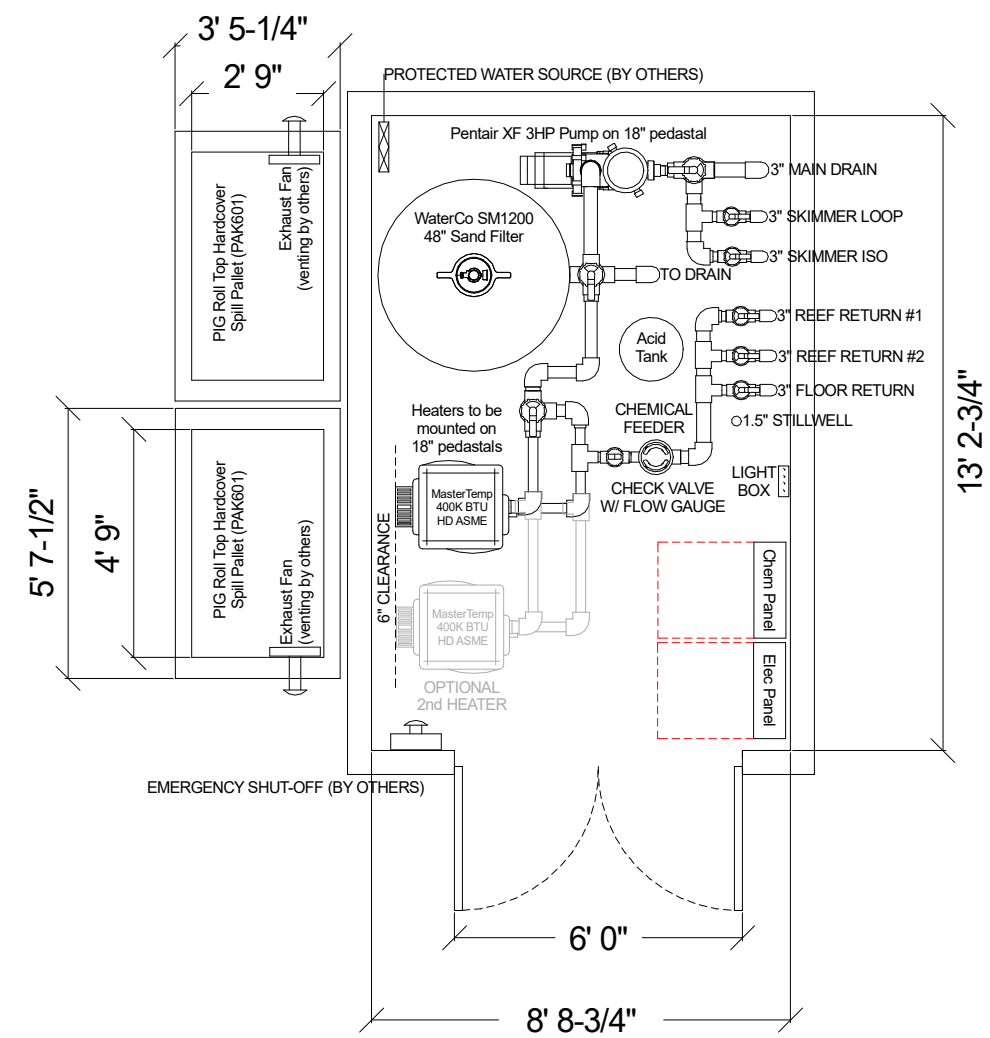


1. ALL ELECTRICAL WORK (BY OTHERS) MUST BE INSTALLED BY A LICENSED ELECTRICIAN IN ACCORDANCE WITH NEC AND APPLICABLE LOCAL CODES AND ORDINANCES.
2. BONDING SHALL BE PERFORMED IN ACCORDANCE WITH SECTION 680-25 OF NEC.
3. GAS LINE FOR HEATER BY OTHERS.
4. POOL DECK
5. DECK DRAINAGE BY OTHERS.
6. SANITARY LINE AND TERMINATION FOR BACKWASHING ARE BY OTHERS. MINIMUM FLOW RATE IS LISTED IN DESIGN DRAWINGS.
7. DOMESTIC WATER CONNECTIONS ARE BY OTHERS.
8. DRAINING OF POOL IS BY OTHERS.
9. REFERENCE AND FOLLOW THE GEOTECHNICAL REPORT FOR ALL PERTINENT INFORMATION REGARDING SITE CONDITIONS.
10. POOL VAULT

06/05/2020

SD2.01





POOL VAULT (BY OTHERS)

MIDWEST CUSTOM POOLS  
600 Lincoln Street  
Lawrence, KS 66044  
P: 785.843.9119  
F: 785.843.6524  
MidwestCustomPools.com



06/05/2020

**Summit at West Pryor**  
940 NW Pryor Road  
Lee's Summit, MO 64081

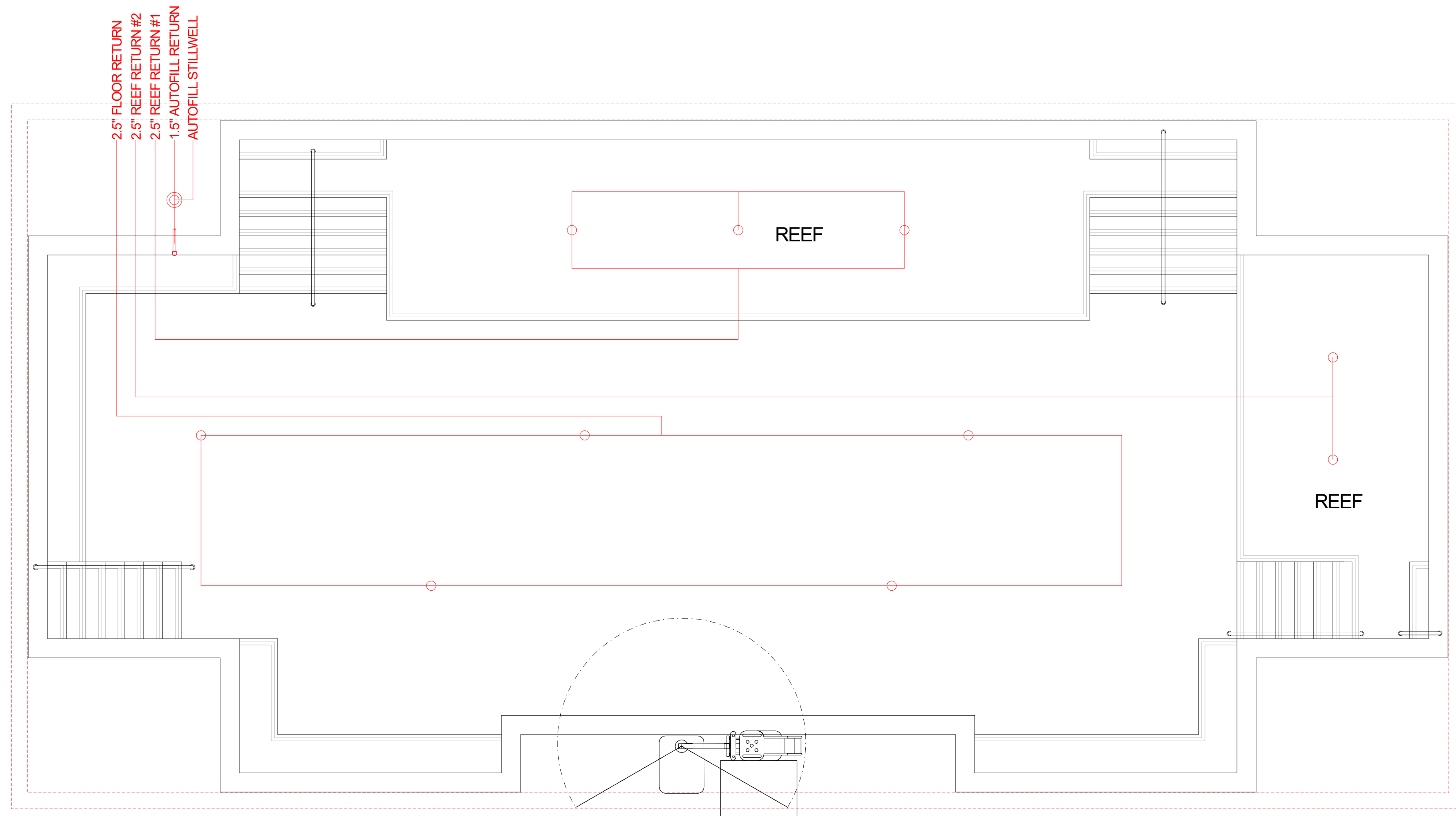
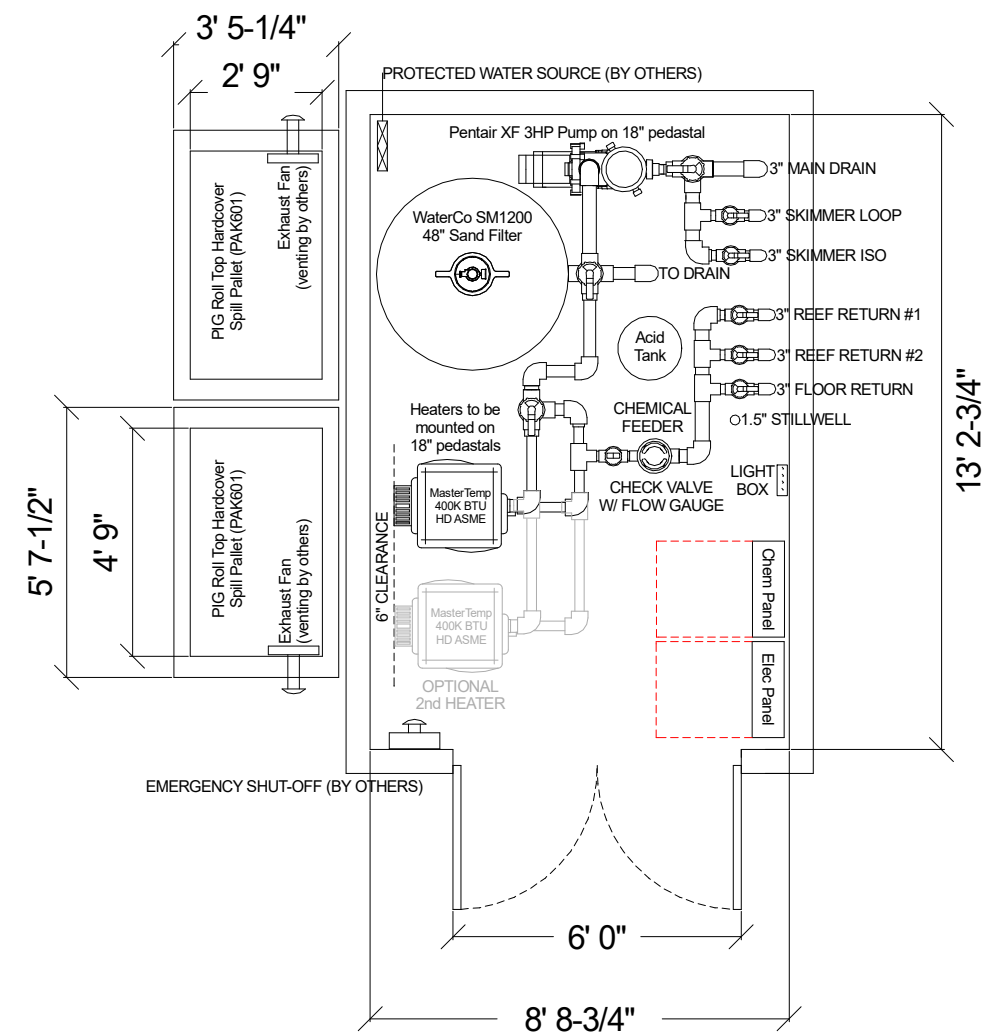
Plan Date:  
05.26.2020

Drawn By: DN

SHEET NO.

**SD3.01**





POOL VAULT (BY OTHERS)



06/05/2020

**Summit at West Pryor**  
940 NW Pryor Road  
Lee's Summit, MO 64081

Plan Date:  
05.26.2020

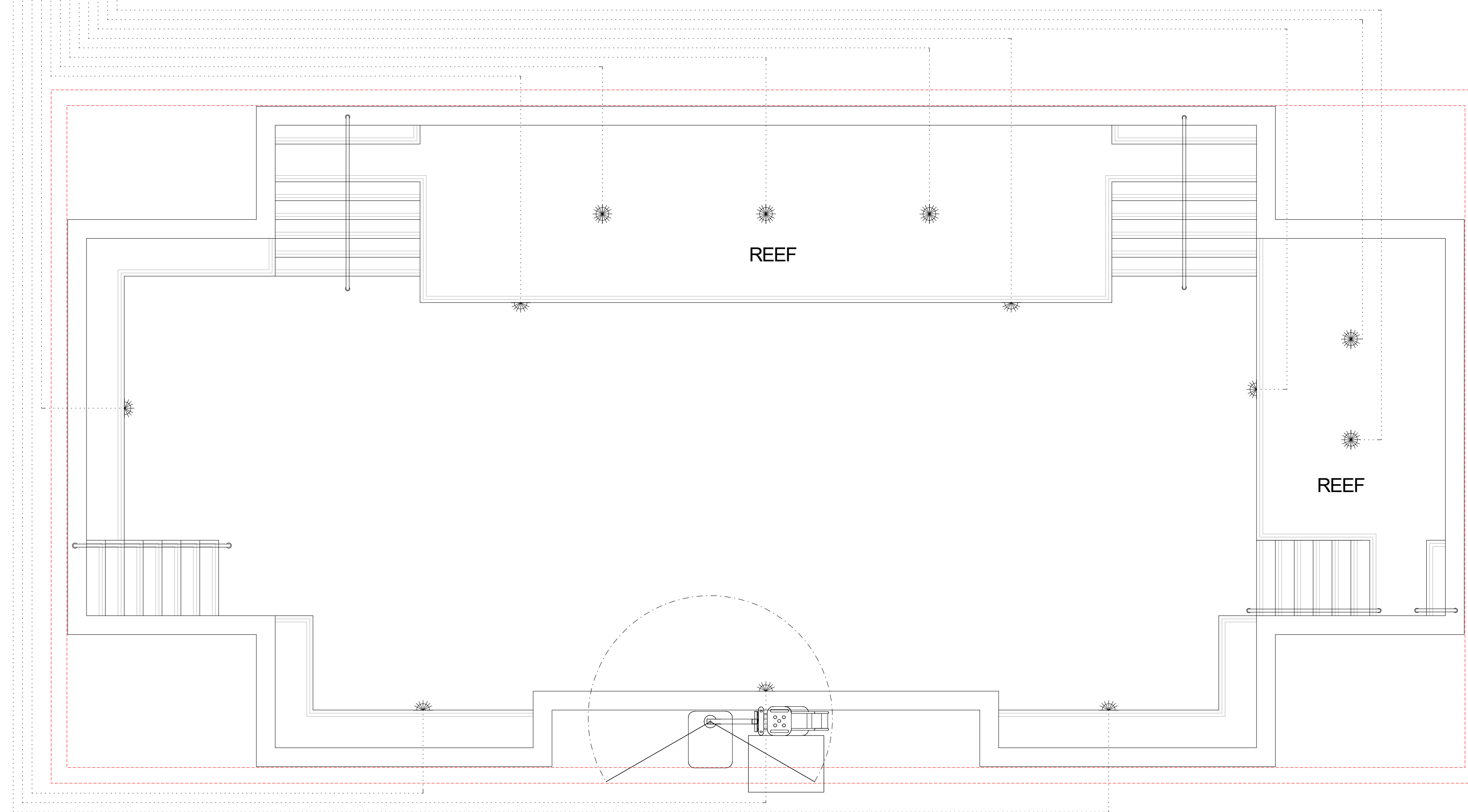
Drawn By: DN

SHEET NO.  
**SD3.02**

**MIDWEST CUSTOM POOLS**  
600 Lincoln Street  
Lawrence, KS 66044  
P: 785.843.9119  
F: 785.843.6524  
MidwestCustomPools.com



1" LIGHTING CONDUITS  
TO JUNCTION BOX IN  
LANDSCAPE PLANTER



POOL VAULT (BY OTHERS)



MIDWEST CUSTOM POOLS  
600 Lincoln Street  
Lawrence, KS 66044  
P: 785.843.9119  
F: 785.843.6524  
MidwestCustomPools.com

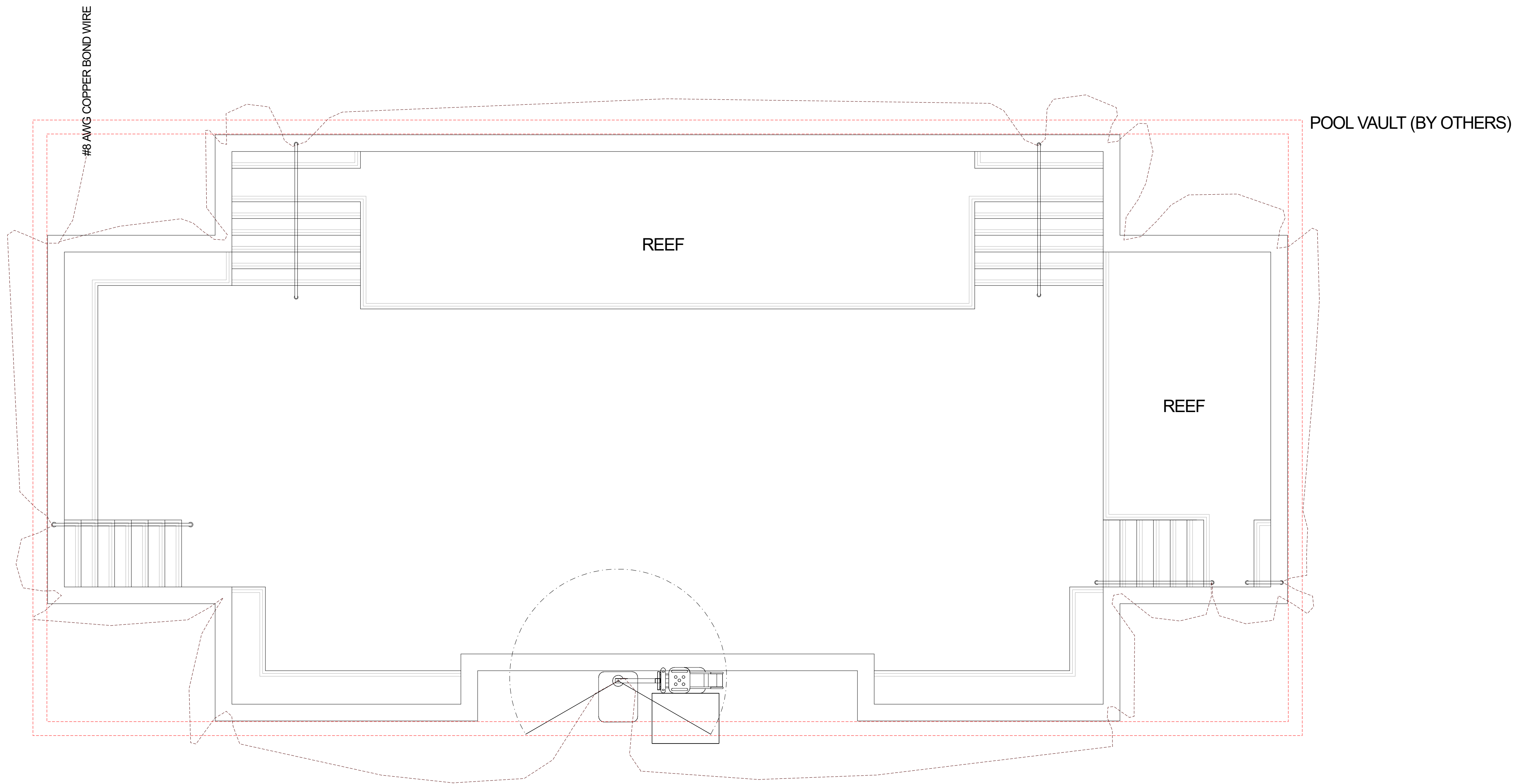
**Summit at West Pryor**  
940 NW Pryor Road  
Lee's Summit, MO 64081

Plan Date:  
05.26.2020

Drawn By: DN

SHEET NO.  
**SD4.01**





BONDING SHALL BE PERFORMED IN ACCORDANCE  
WITH SECTION 680-25 OF NEC.



06/05/2020

Summit at West Pryor

940 NW Pryor Road  
Lee's Summit, MO 64081

Plan Date:  
05.26.2020

Drawn By: DN

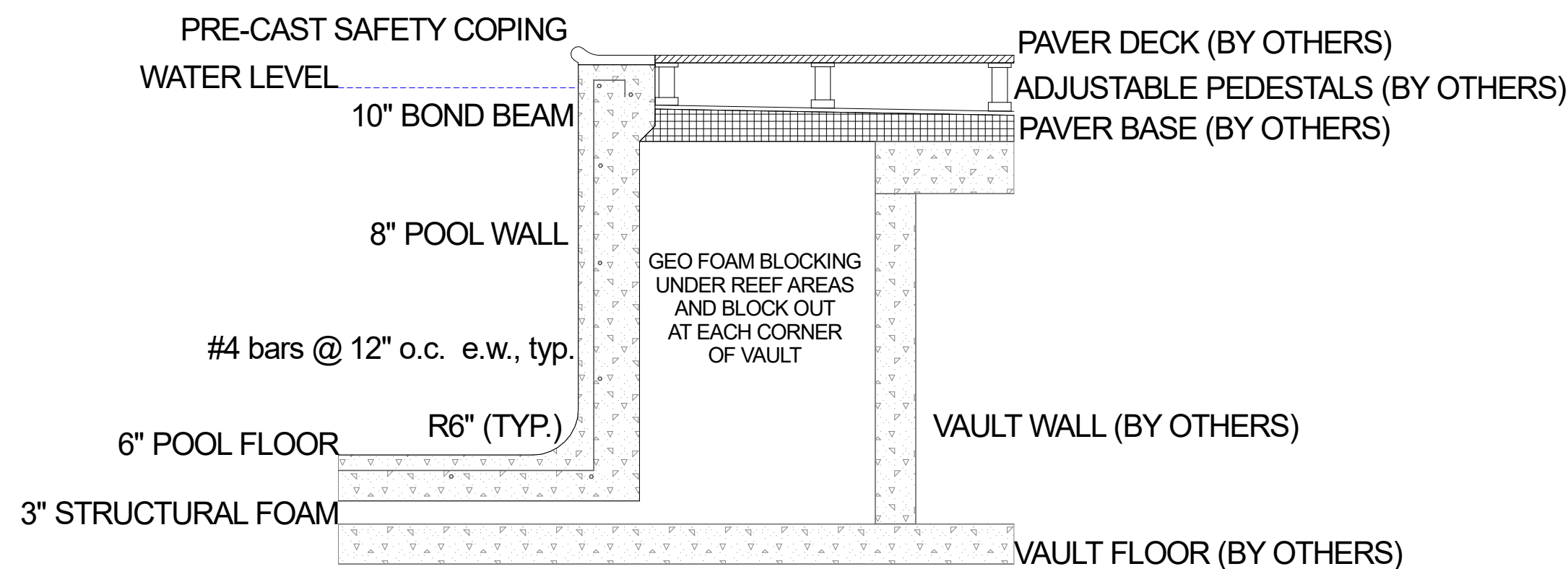
SHEET NO.

SD5.01

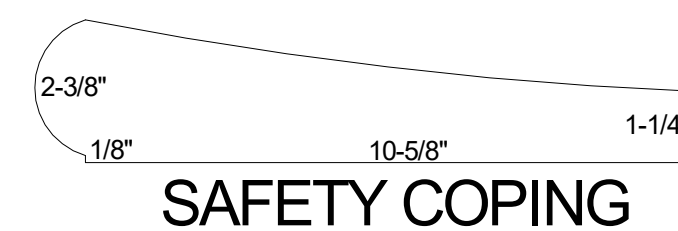
MIDWEST CUSTOM POOLS  
600 Lincoln Street  
Lawrence, KS 66044  
P: 785.843.9119  
F: 785.843.6524  
MidwestCustomPools.com



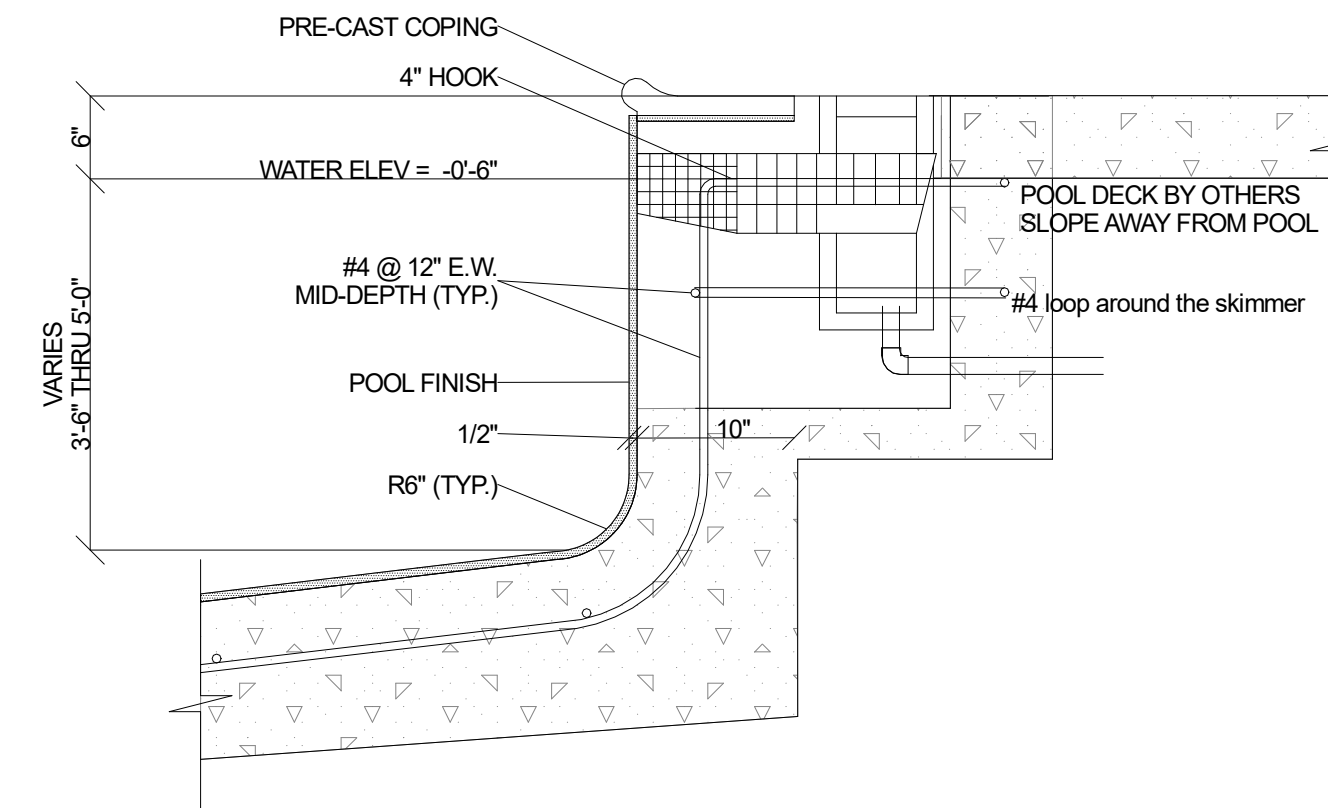




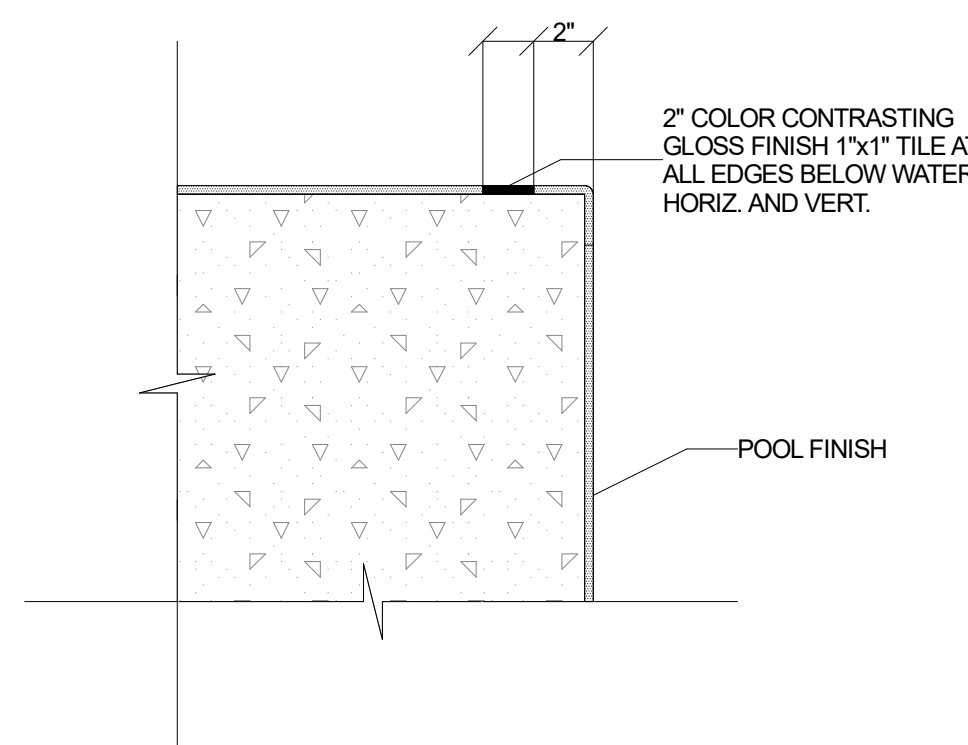
TYPICAL POOL WALL SECTION  
NO SCALE



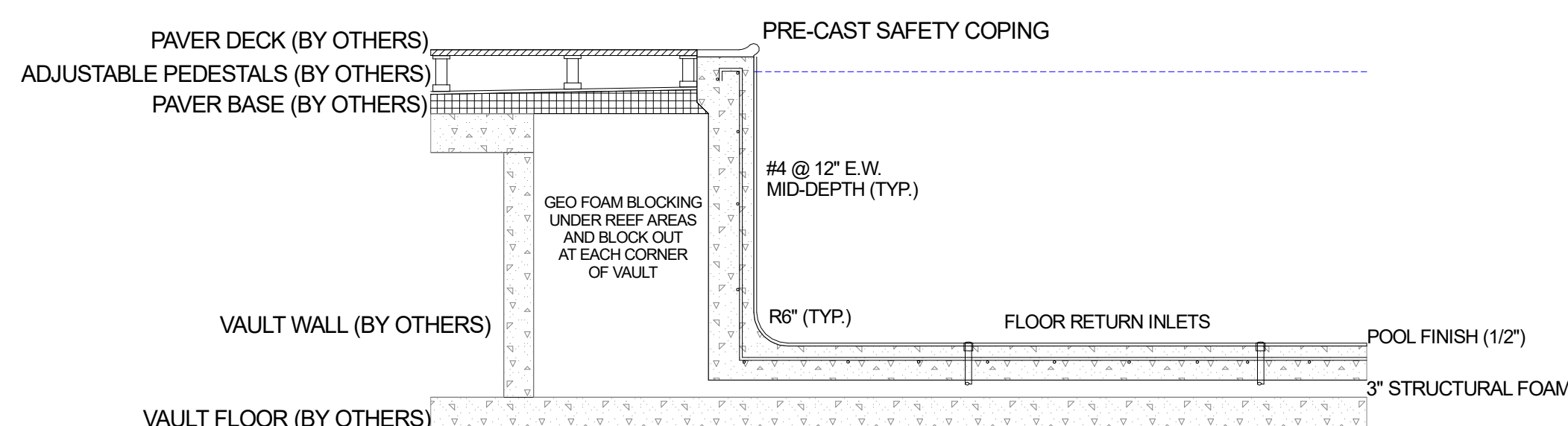
SAFETY COPING



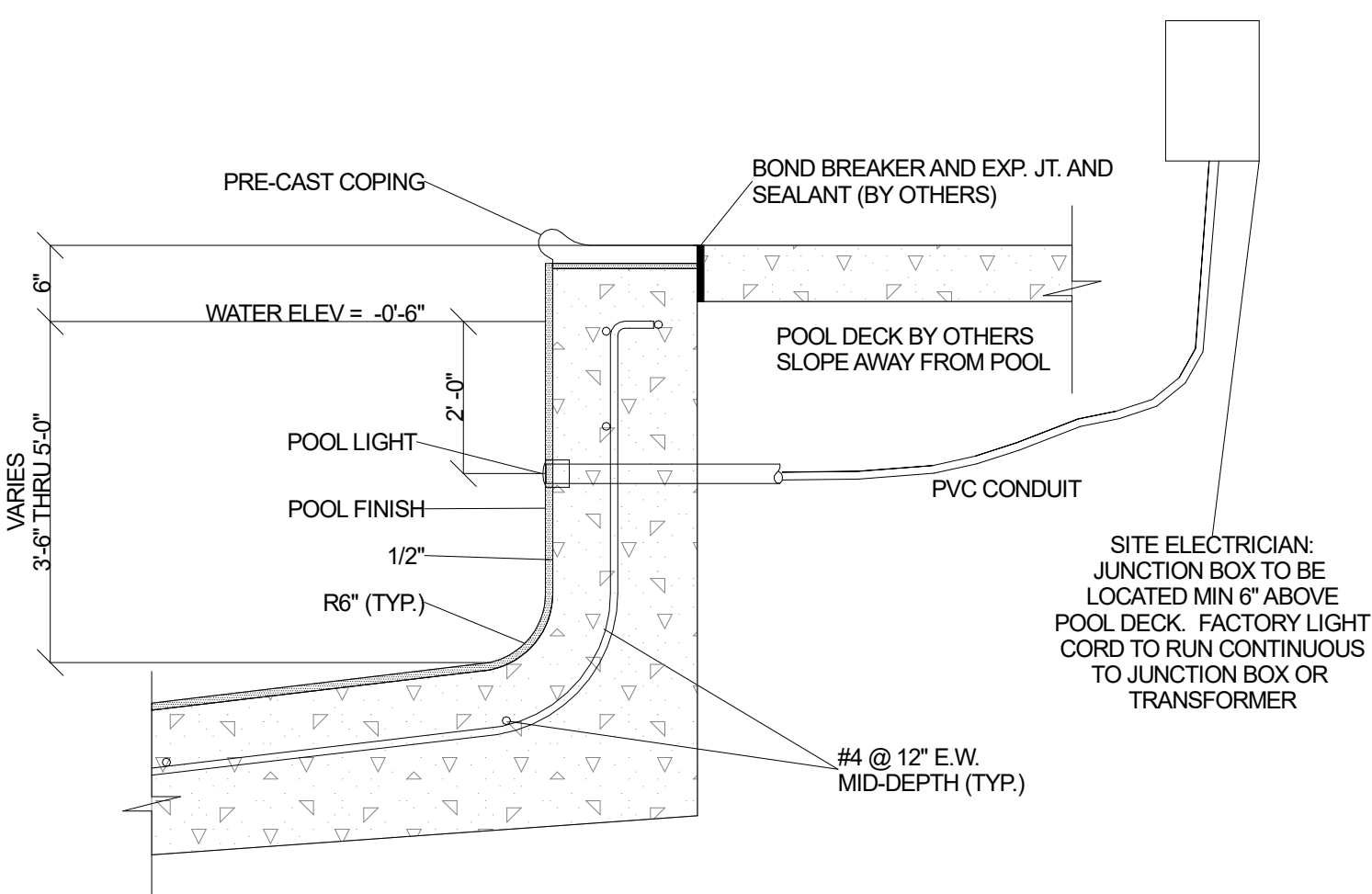
TYPICAL POOL SKIMMER SECTION  
NO SCALE



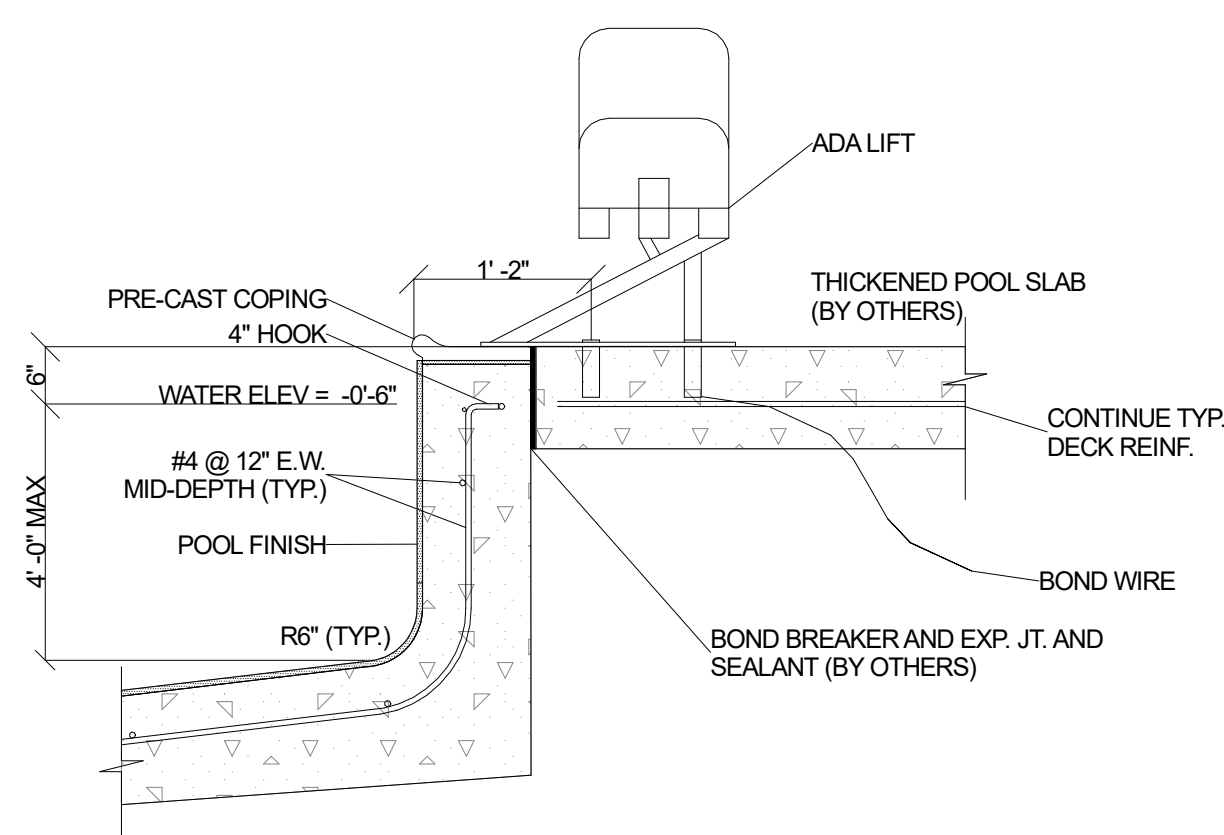
STAIR TREAD AND UNDER WATER EDGE DETAIL  
NO SCALE



POOL RETURN DETAIL  
NO SCALE

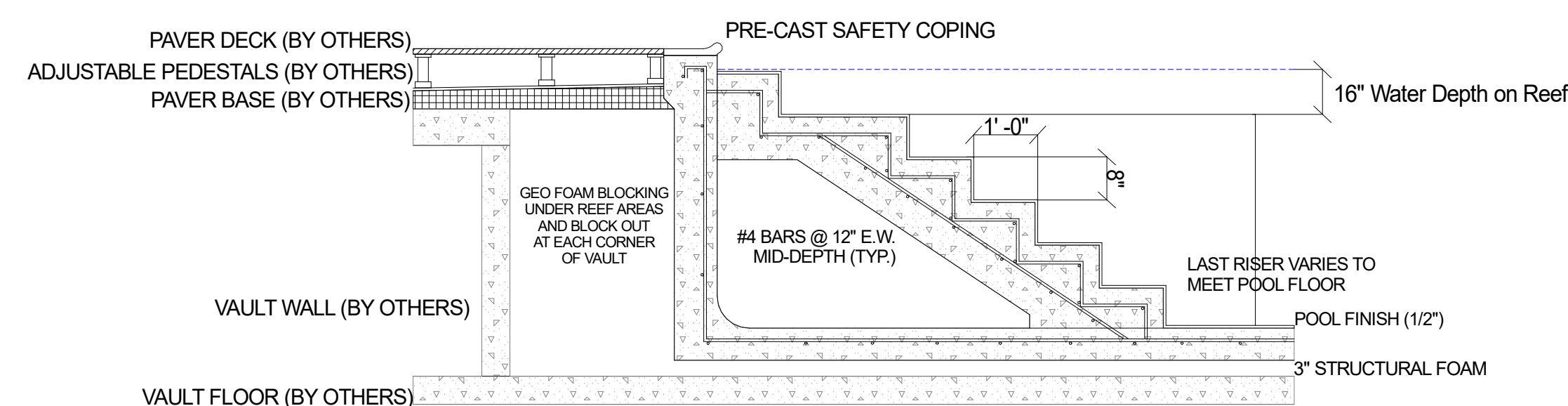


POOL LIGHT SECTION  
NO SCALE



POOL ADA LIFT SECTION  
NO SCALE

04



POOL STAIR DETAIL  
NO SCALE

MIDWEST CUSTOM POOLS

600 Lincoln Street

Lawrence, KS 66044

P: 785.843.9119

F: 785.843.6524

MidwestCustomPools.com



6-05-2020

Summit at West Pryor

940 NW Pryor Road

Lee's Summit, MO 64081

Plan Date:  
05.26.2020

Drawn By: DN

SHEET NO.

SD8.01