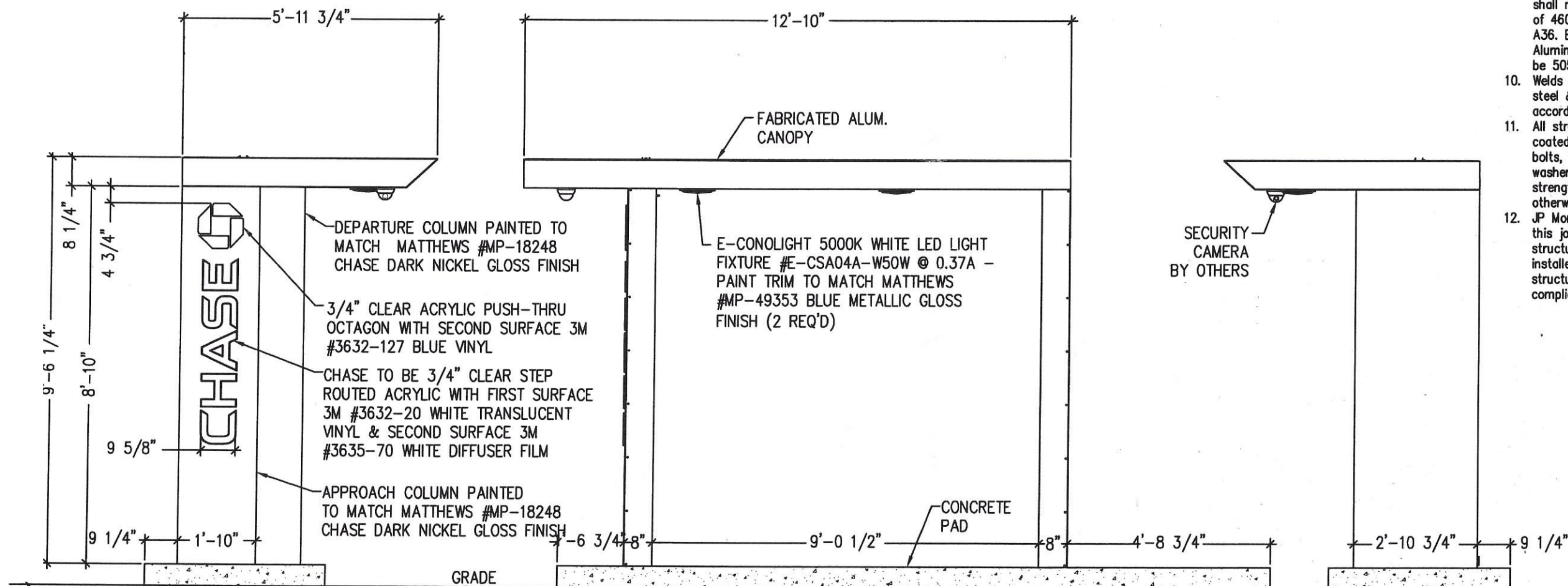
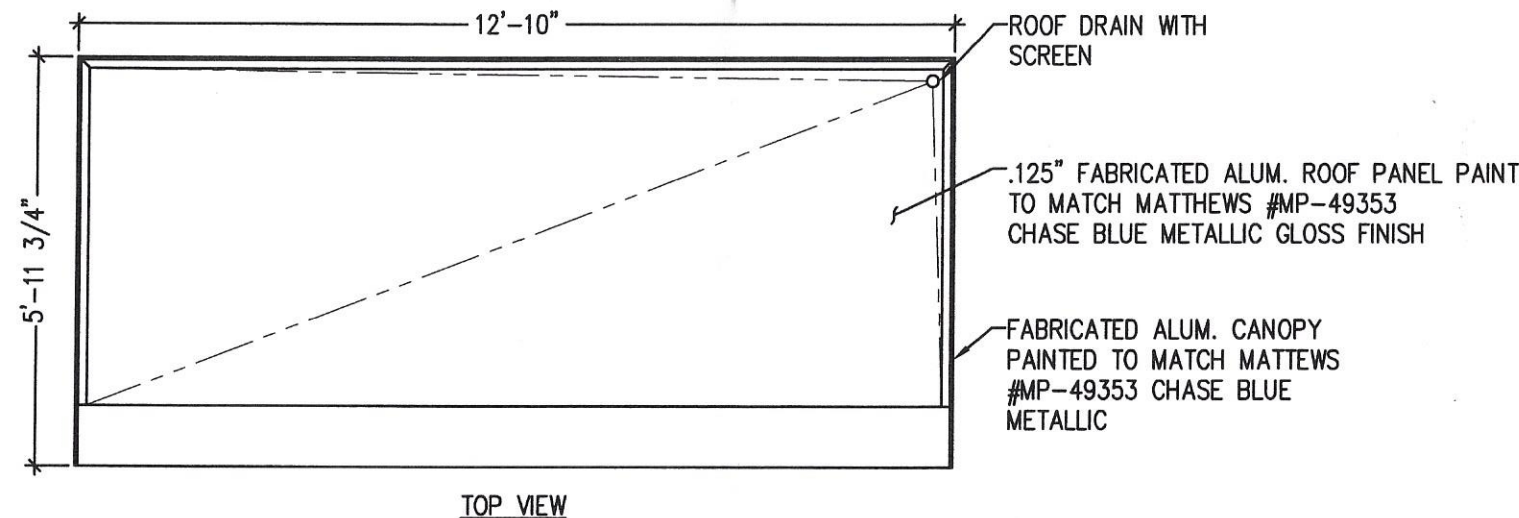


07/07/2020

CANOPY ELECTRICAL REQUIREMENTS (NOT INCLUDING ATM  
MACHINE, SECURITY CAMERA & RELATED APPLIANCES):  
LEDS: (41) 7100°K WHITE SLOAN PRISM #701269-7WSJ1-MB  
(43) BLUE SLOAN PRISM #701269-BLSJ1-MB  
DOWNLIGHTS: (2) E-CONOLIGHT 5000K WHITE LED LIGHT  
FIXTURE #E-CSA04A-W50W @ 0.37A  
LED POWER SUPPLY: (3) SLOAN #701507-60C1 @ 0.70A  
TOTAL LOAD: 2.84 AMPS @ 120VAC  
CIRCUITS: (1) 20 AMP REQ'D.

ALL EXPOSED PAINTED SURFACES SHALL BE COATED  
WITH MATTHEWS #282-208SP VOC GLOSS CLEAR, WITH  
MINIMUM 2 MILS DRY FILM THICKNESS (DFT) PER  
MATTHEWS APPLICATION SPECIFICATIONS.



General Notes:

- Design is based on a 115 mph, 3 second gust wind design per IBC 2015, Category II, Exposure C. 40psf Ground Snow Load.
- Spread foundation is based on a presumptive safe vertical soil bearing pressure minimum of 1500 psf.
- A soil report was not provided. Foundation analysis assumes Soil Classification 5. Allowable bearing pressure should be verified prior to placement of concrete. In the event that the stated requirements are not met and conditions appear deleterious, cease and secure excavation and immediately contact the project manager.
- Foundation shall not be placed at the top of, or on the side of a slope exceeding 3:1, or adjacent to a fill slope unless re-evaluated by a competent Professional Engineer. Do not place foundation in fill.
- Concrete shall be mixed to attain a minimum 28 day compressive strength of 3000 psi.
- Steel reinforcing bars shall conform to ASTM A615, Grade 60 with deformations in accordance with ASTM A305. Welding of reinforcing bars is prohibited.
- All voids between column base plate and foundation surface shall be completely filled with high-strength, non-shrink grout.
- Anchor bolts shall meet ASTM F1554 Grade 36. Exposed surfaces shall be galvanized or coated to prevent corrosion.
- All support members shall be free from defects. Steel tube shall meet ASTM A500 Grade B with a minimum yield strength of 46000 psi. Steel angle, channel and plate shall meet ASTM A36. Extruded aluminum shapes shall be 6061-T6 alloy. Aluminum sheet shall be 3003-H14 alloy. Aluminum plate shall be 5052-H34 alloy.
- Welds shall be made with E70xx low hydrogen electrodes for steel & with 5356 filler for aluminum by persons qualified in accordance with AWS standards within the past two years.
- All structural bolts shall conform to ASTM A325, and be zinc coated unless noted otherwise. When used with structural bolts, heavy hex nuts shall conform to ASTM A563, and washers shall conform to ASTM F436. Pretension all high strength bolts using the Turn-of-Nut method unless noted otherwise.
- JP Morgan Chase will not be responsible for the safety on this job site before, during or after installation of this structure. It is the responsibility of the contractors and installers to ensure that the installation and erection of this structure is performed using methods that are in full compliance with OSHA regulations.

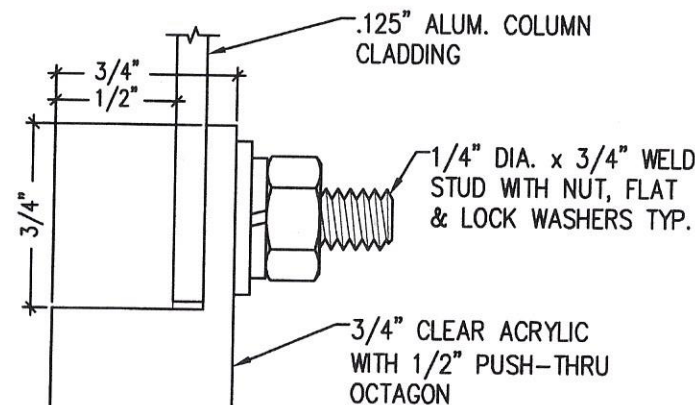
Jeff L. Griffin  
12255 W. 187th St.  
Mokena, IL 60448



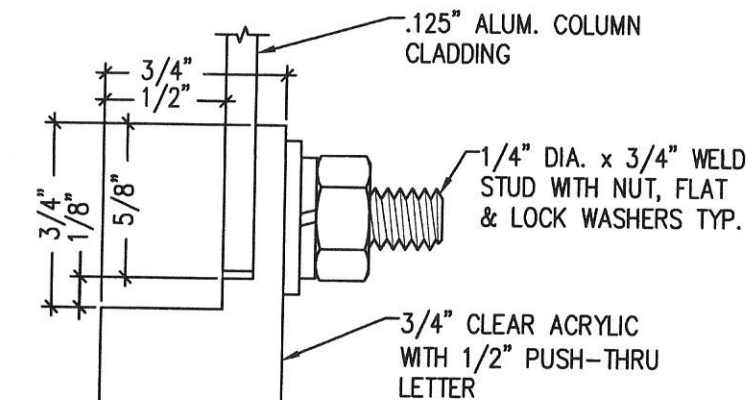
2/18/11	CHANGED COLOR TO AN-HEAVY DUTY METAL, REMOVED WHITE OCTAGON ON DEPARTURE COLUMN, CHANGED COLOR OF APPROACH COLUMN TO PINK-SHED, CHANGED COPY TOP PLATE, CHANGED ROOF GROUND TO FACED METAL, CHANGED APPROACH COLUMN GROUND LENS TO BLUE PINK SHED.	TRR	IK	11/22/11	CHANGED DEPARTURE COLUMN COLOR TO MP-18248 DARK NICKEL FROM MP-49353 METALLIC BLUE	TRR	IK	10/31/13	ADDED TACK WELD SYMBOL TO A.B. DETAILS	TRR	IK	9/6/16	CHANGED RUUD LIGHT FIXTURE TO CREE	TRR	IK	11/14/17	CHANGED COLUMN TOP PLATES TO 1/2" FROM 1/4"	JO	IK	
				8/31/11	REMOVED OCTAGON ON ROOF TO CORRECT ORIENTATION OF LOGO ON DEPARTURE SIDE OF CANOPY			7/23/12	REVISED APPROACH COLUMN FOR SERVICEABILITY			6/20/16	CHANGED PERMLIGHT LEDs TO GE			10/2/17	UPDATED E-COSM SERIES LIGHT FIXTURES TO THE E-CSA04 SERIES LIGHT FIXTURES			
12/15/10	ADDED HEADACHE BAR ANCHOR DETAILS	TRR	IK	4/1/11	CHANGED DESIGNATION FROM CAN-ATM TO CAN-ATM-SIG-OCT, CHANGED CANOPY MOUNTING BOLTS FROM 3/8" DIA. TO 1/2" DIA.	TRR	IK	2/22/12	REVISED FOUNDATION	TRR	IK	12/10/14	ADDED HID FIXTURES TO BACK OF CANOPY	TRR	IK	6/29/17	REVISED FOUNDATION DETAILS & UPDATED LEDs & DOWNLIGHTS	JO	IK	
<div>CHASE</div> <div>These documents represent prototypical design drawings created specifically for use by J.P. Morgan Chase. Use of this unpublished work for any purpose other than the intended application is strongly discouraged. Disclosure or reproduction of any of the information contained within these documents without the written consent of the owner is strictly prohibited.</div>		SHT.		1		BY: TRR		Project No. 08-1218		11/16/10		ADDED NOTE TO PAINT LIGHT FIXTURE TRIM TO MATCH CANOPY		TRR	IK	GRAPHICS DEPICTED ARE FOR ILLUSTRATIVE PURPOSES ONLY! USE ONLY APPROVED ARTWORK FOR PRODUCTION.		DESIGNATION: CAN-ATM-SIG-OCT		
										7/30/10		ADDED CLEAR COAT NOTE		TRR						IK
										6/1/09		ADDED CAP PLATE TO OCTAGON MOUNTING STUD CALLED SECURITY CAMERA TO BE BY OTHERS		TRR						IK
										5/15/09		CHANGED CANOPY TO PSCO DESIGN		TRR						IK
										REV. DATE		DESCRIPTION		BY: APR:						
										12		1/27/09		Drawing No. B244040						



07/07/2020

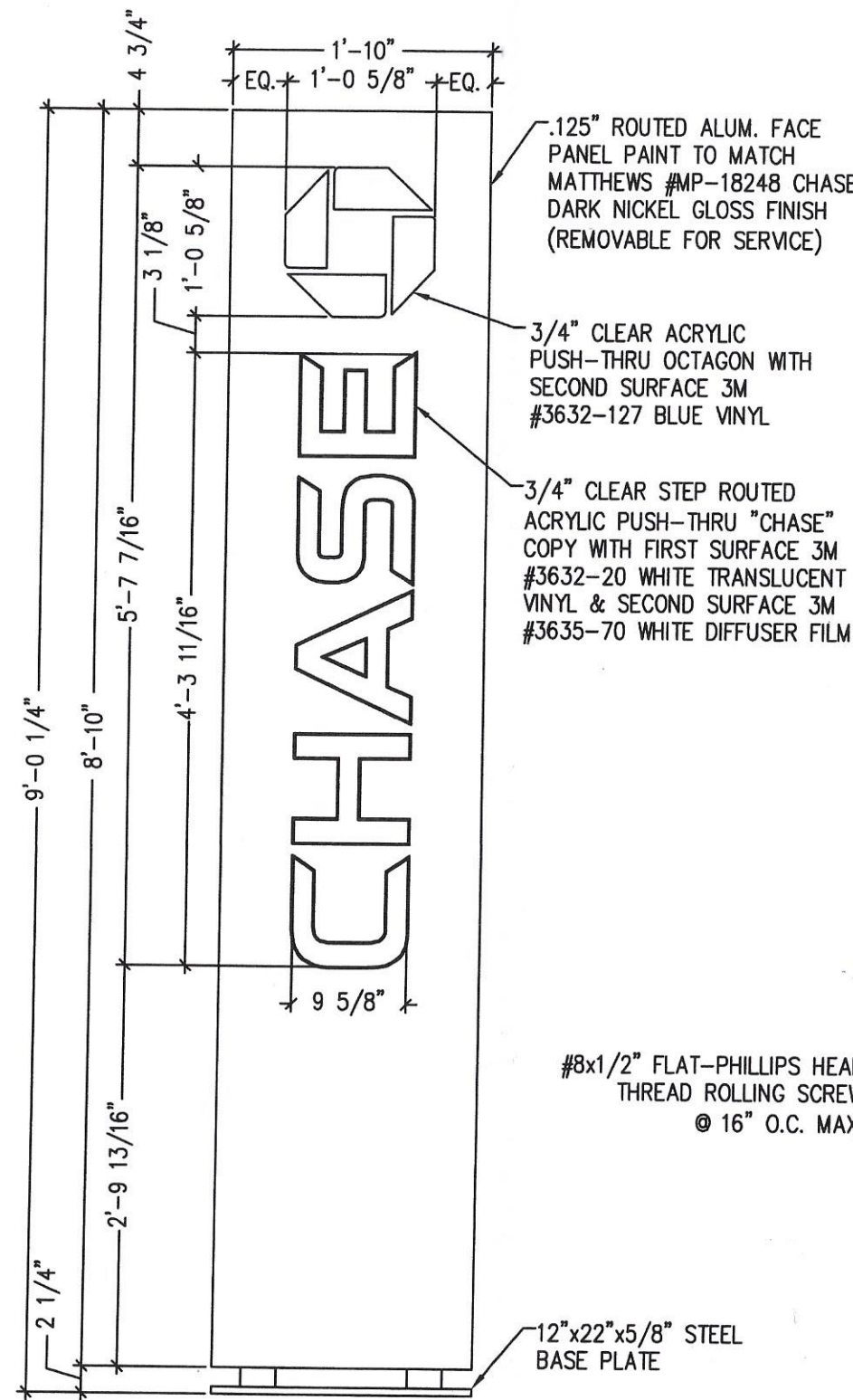


OCTAGON ATTACHMENT DETAIL

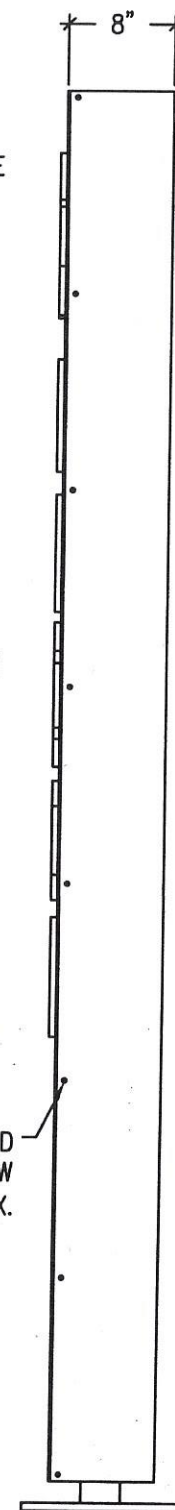


PUSH-THRU LETTER MOUNTING DETAIL

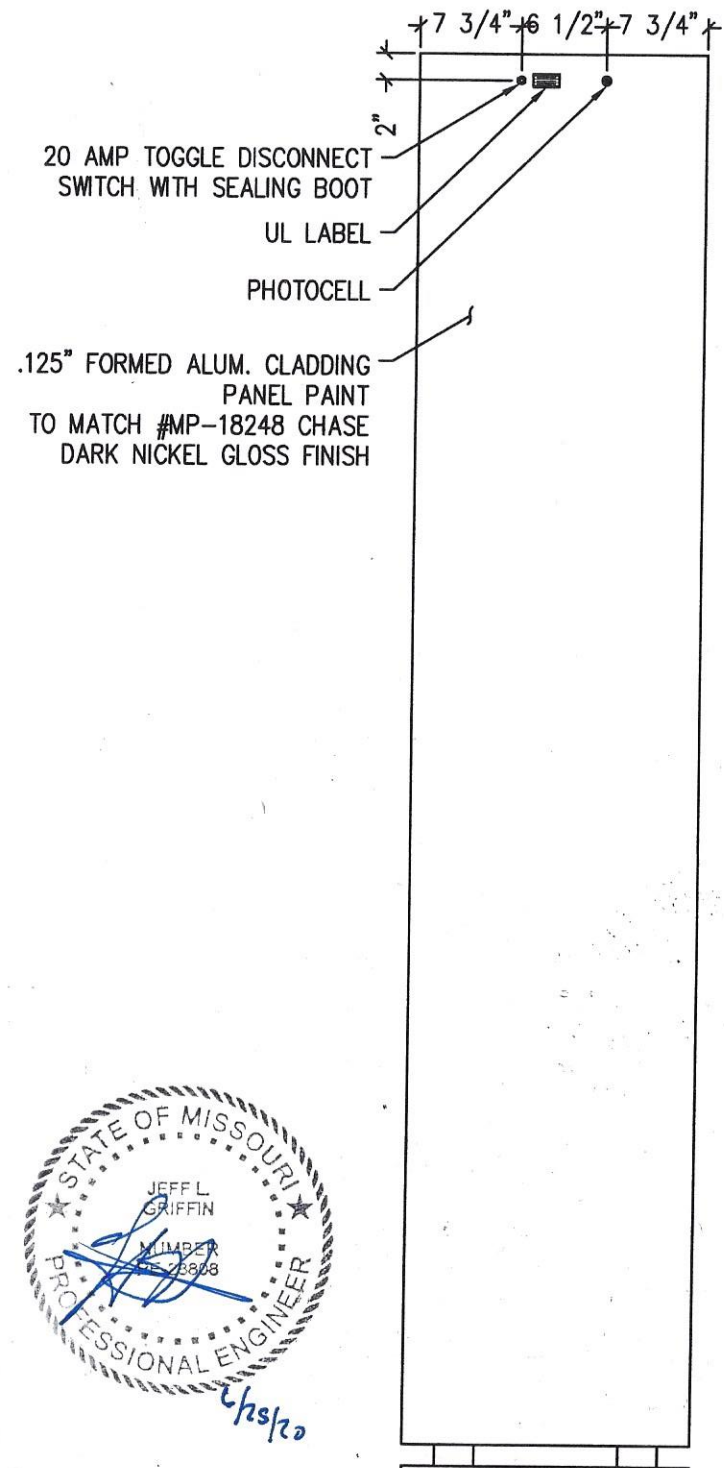
STEP ROUTING OF LETTERS SHALL  
BE FINISHED WITH A 1/8" DIA. BIT  
TO PROVIDE SHARP CORNERS



APPROACH COLUMN APPROACH VIEW



APPROACH COLUMN ELEVATION



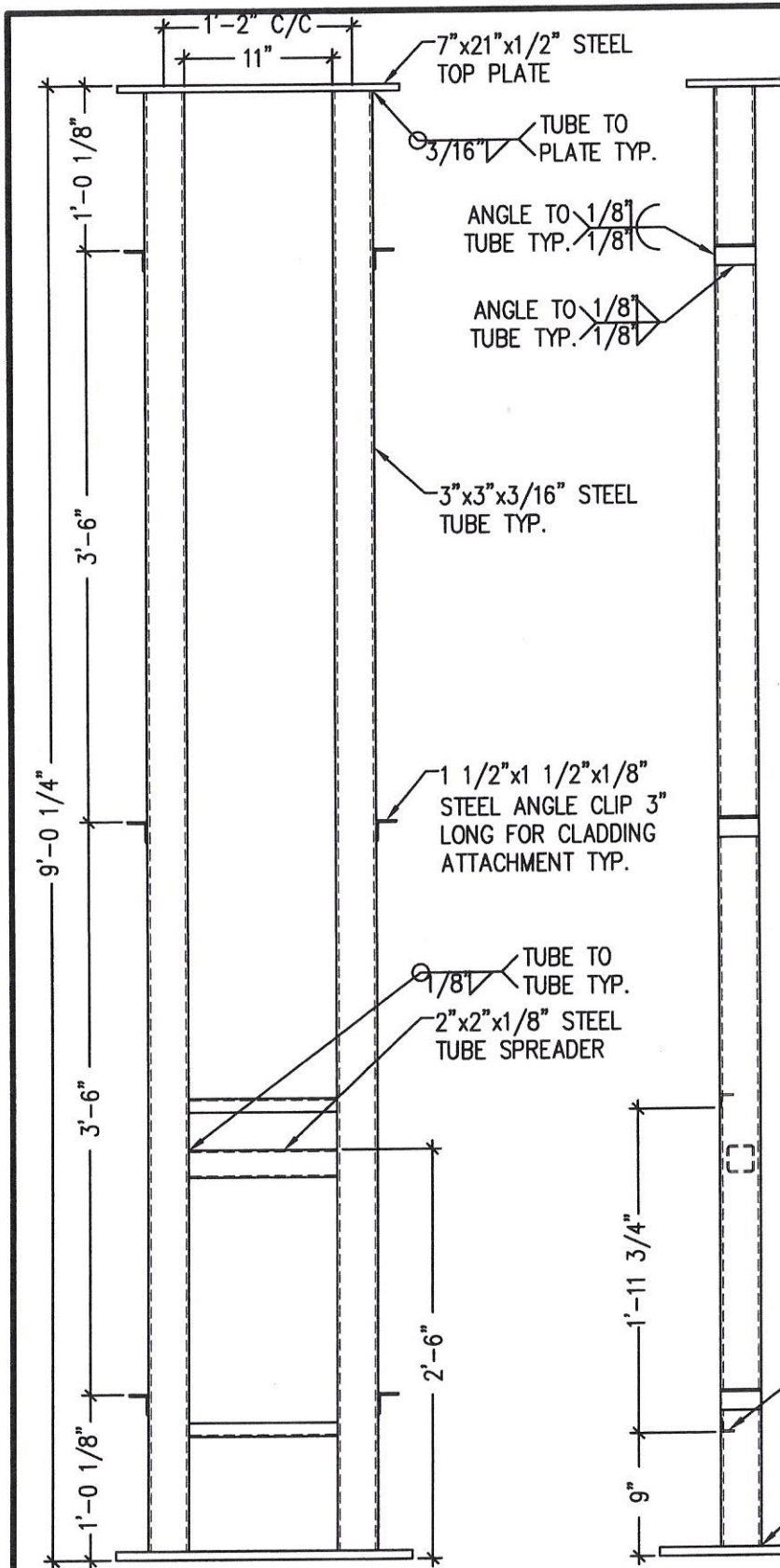
APPROACH COLUMN DEPARTURE VIEW



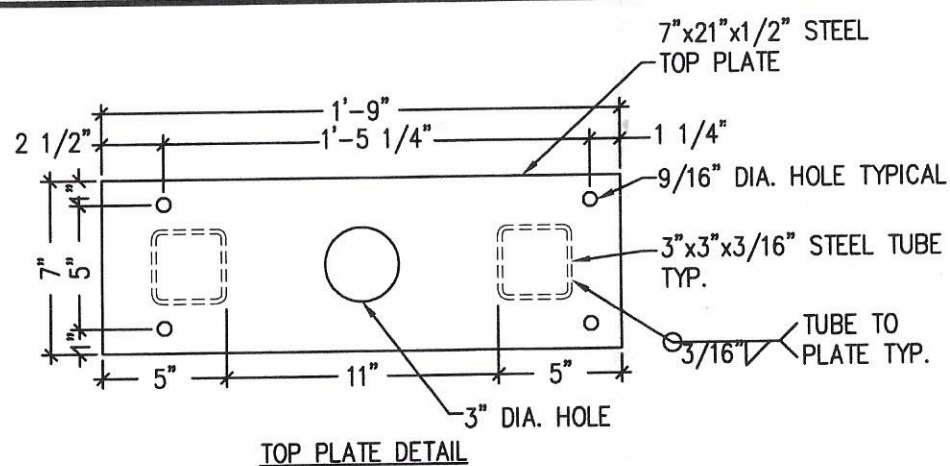
A	2/18/11	CHANGED COLOR TO 60-SEVEN DARK NICKEL, REMOVED THE OCTAGON ON DEPARTURE COLUMN, CHANGED OCTAGON ON APPROACH COLUMN TO PUSH-THRU, AND "CHASE" COPY STEP-ROUTED, CHANGED ROOF OCTAGON TO PUSHER, REMOVED CHASE APPROACH COLUMN OCTAGON LINE TO BLUE FROM WHITE.	TRR	IK	A	11/22/11	CHANGED DEPARTURE COLUMN COLOR TO 60-SEVEN DARK NICKEL FROM 60-4033 METALLIC BLUE	TRR	IK	A	10/31/13	ADDED TACK WELD SYMBOL TO A.B. DETAILS	TRR	IK	A	9/6/16	CHANGED RUUD LIGHT FIXTURE TO CREE	TRR	IK	A	11/14/17	CHANGED COLUMN TOP PLATES TO 1/2" FROM 1/4"	JO	IK		
	A	12/15/10	ADDED HEADACHE BAR ANCHOR DETAILS	TRR	IK	A	8/31/11	REVISED OCTAGON ON ROOF TO CORRECT ORIENTATION OF LOGO ON DEPARTURE SIDE OF CANOPY	TRR	IK	A	7/23/12	REVISED APPROACH COLUMN FOR SERVICABILITY	TRR	IK	A	6/20/16	CHANGED PERMLIGHT LED TO GE	TRR	IK	A	10/2/17	UPDATED E-COS SERIES LIGHT FIXTURES TO THE E-COSM4 SERIES LIGHT FIXTURES	JO	IK	
						A	4/1/11	CHANGED DESIGNATION FROM CAN-ATM TO CAN-ATM-SIG-OCT, CHANGED CANOPY MOUNTING BOLTS FROM 3/8" DIA. TO 1/2" DIA.	TRR	IK	A	2/22/12	REVISED FOUNDATION	TRR	IK	A	12/10/14	ADDED HID FIXTURES TO BACK OF CANOPY	TRR	IK	A	6/29/17	REVISED FOUNDATION DETAILS & UPDATED LEDS & DOWNLIGHTS	JO	IK	
<div>CHASE</div> <div>These documents represent prototypical design drawings created specifically for use by J.P. Morgan Chase. Use of this unpublished work for any purpose other than the intended application is strongly discouraged. Disclosure or reproduction of any of the information contained within these documents without the written consent of the owner is strictly prohibited.</div>			SHT.		2		BY:		TRR		Project No.		08-1218		A		11/16/10		TRR		IK		GRAPHICS DEPICTED ARE FOR ILLUSTRATIVE PURPOSES ONLY! USE ONLY APPROVED ARTWORK FOR PRODUCTION.		DESIGNATION:  CAN-ATM-SIG-OCT	
			OF		12		DATE:		1/27/09		Drawing No.		B244040		A		7/30/10		TRR		IK					
															A		6/1/09		TRR		IK					
															A		5/15/09		TRR		IK					
															REV. DATE						BY:					



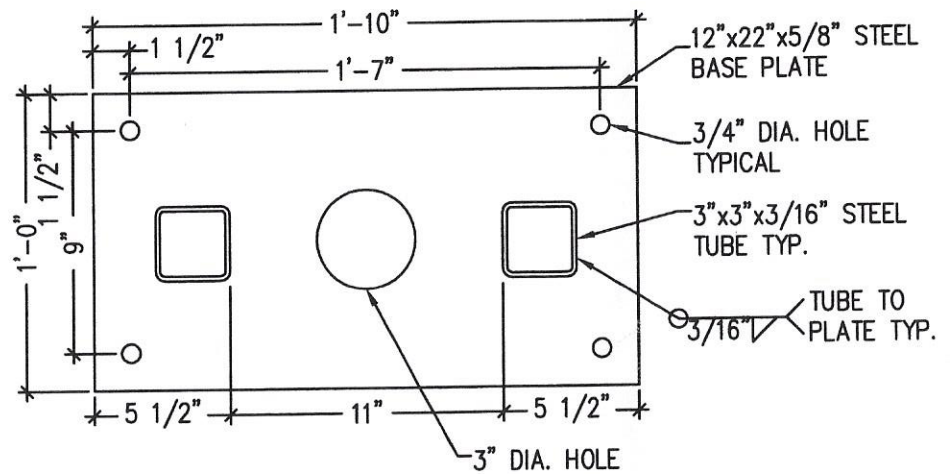
07/07/2020



APPROACH COLUMN STRUCTURE

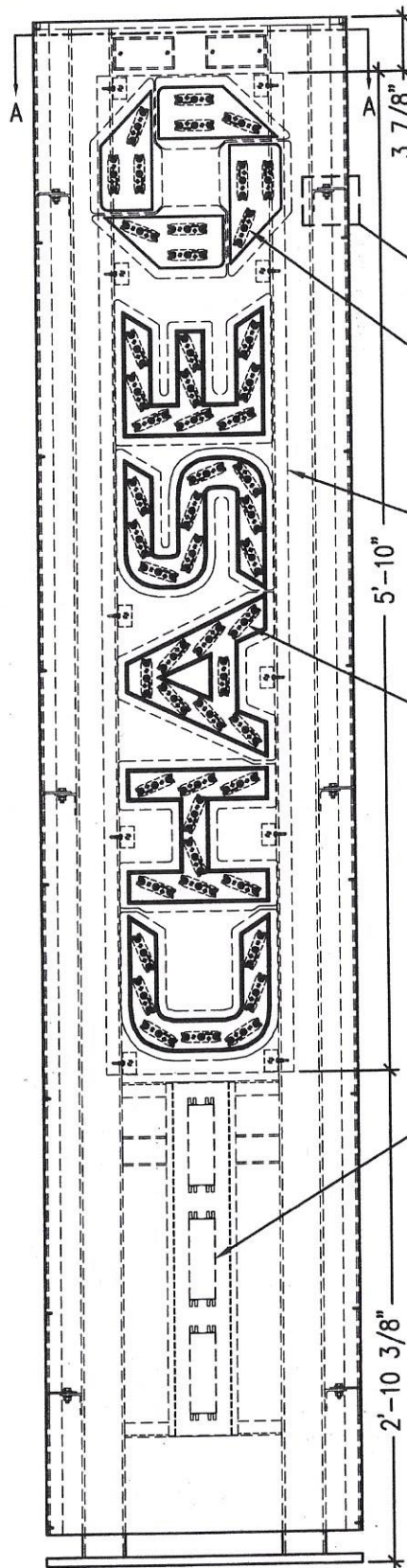


TOP PLATE DETAIL



BASE PLATE DETAIL

**COLUMN ELECTRICAL REQUIREMENTS:**  
LEDS: (41) 7100°K WHITE SLOAN PRISM 701269-7WSJ1-MB  
(12) BLUE SLOAN PRISM #701269-BLSJ1-MB  
POWER SUPPLY: (3) SLOAN #701507-60C1 @ 0.70A  
TOTAL LOAD: 2.10 AMPS @ 120VAC  
CIRCUITS: (1) 20 AMP REQ'D.



APPROACH COLUMN ASSEMBLED SIDE VIEW

APPROACH COLUMN ASSEMBLED ELEVATION



**CHASE**

These documents represent prototypical design drawings created specifically for use by J.P. Morgan Chase. Use of this unpublished work for any purpose other than the intended application is strongly discouraged. Disclosure or reproduction of any of the information contained within these documents without the written consent of the owner is strictly prohibited.

SHT.  
3  
OF  
12

BY:  
TRR  
DATE:  
1/27/09

Project No.  
08-1218  
Drawing No.  
B244040

REV.	DATE	DESCRIPTION	BY:	APR:
11/16/10		ADDED NOTE TO PAINT LIGHT FIXTURE TRIM TO MATCH CANOPY	TRR	IK
7/30/10		ADDED CLEAR COAT NOTE	TRR	IK
6/1/09		ADDED CAP PLATE TO OCTAGON MOUNTING STUB CALLED SECURITY CAMERA TO BE BY OTHERS	TRR	IK
5/15/09		CHANGED CANOPY TO PSCO DESIGN	TRR	IK
REV.	DATE	DESCRIPTION	BY:	APR:

GRAPHICS DEPICTED ARE FOR ILLUSTRATIVE PURPOSES ONLY! USE ONLY APPROVED ARTWORK FOR PRODUCTION.

DESIGNATION:  
CAN-ATM-SIG-OCT

9/11/19

CHANGED ROOF OCTAGON FACES TO CURVED STYLE. CHANGED ROOF OCTAGON MOUNTING TUBES TO .188" THICK FROM .125". CHANGED PLACEMENT OF J-BONES IN APPROACH COLUMN FOR BETTER SERVICE ACCESS. EXTENDED FOUNDATION TO INCLUDE ELECT. PERISTAL.

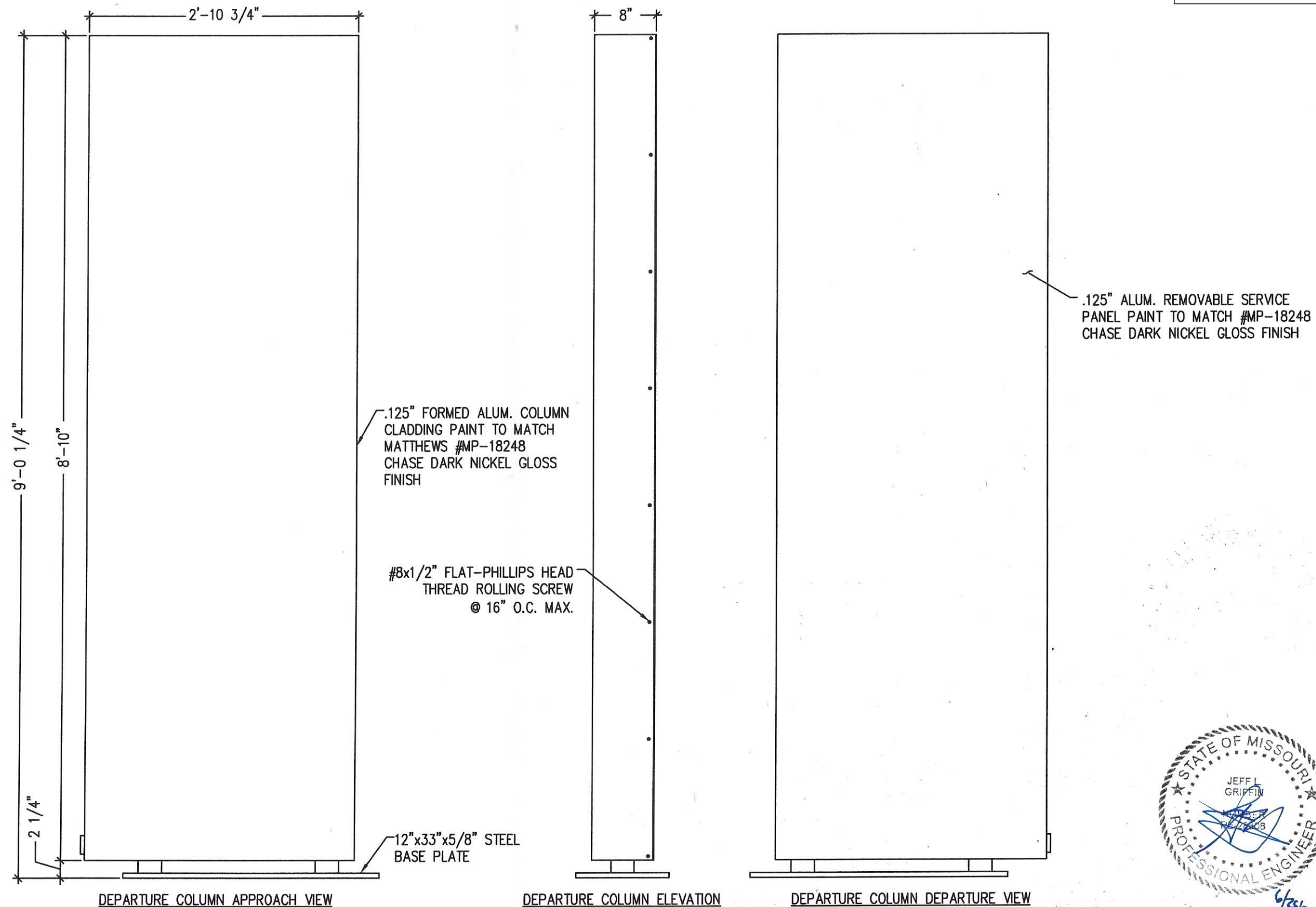
TRR  
IK



[illegible]



07/07/2020



2/18/11	CHANGED COLOR TO MP-18248 DARK NICKEL GLOSS. REVISED WHITE OCTAGON ON DEPARTURE COLUMN. CHANGED OCTAGON ON APPROACH COLUMN TO PINK-NICKEL. CHANGED CAP PLATE TO OCTAGON. CHANGED BASE PLATE TO PINK-NICKEL. CHANGED APPROACH COLUMN OCTAGON LINE TO BLUE FROM WHITE.	TRR	IK	11/22/11	CHANGED DEPARTURE COLUMN COLOR TO MP-18248 DARK NICKEL GLOSS FROM MP-18248 METALLIC BLUE.	TRR	IK	10/31/13	ADDED TACK WELD SYMBOL TO A.B. DETAILS	TRR	IK	9/6/16	CHANGED RUUD LIGHT FIXTURE TO CREE	TRR	IK	11/14/17	CHANGED COLUMN TOP PLATES TO 1/2" FROM 1/4"	JO	IK
				8/31/11	REVISED OCTAGON ON ROOF TO CORRECT ORIENTATION OF LOGO ON DEPARTURE SIDE OF CANOPY			7/23/12	REVISED APPROACH COLUMN FOR SERVICABILITY			6/20/16	CHANGED PERMULIGHT LEDs TO GE			10/2/17	UPDATED E-003 SERIES LIGHT FIXTURES TO THE E-03404 SERIES LIGHT FIXTURES		
12/15/10	ADDED HEADACHE BAR ANCHOR DETAILS	TRR	IK	4/1/11	CHANGED DESIGNATION FROM CAN-ATM TO CAN-ATM-SIG-OCT. CHANGED CANOPY MOUNTING BOLTS FROM 3/8" DIA. TO 1/2" DIA.	TRR	IK	2/22/12	REVISED FOUNDATION	TRR	IK	12/10/14	ADDED HID FIXTURES TO BACK OF CANOPY	TRR	IK	6/29/17	REVISED FOUNDATION DETAILS & UPDATED LEDs & DOWNLIGHTS	JO	IK
<div>CHASE</div> <div>These documents represent prototypical design drawings created specifically for use by J.P. Morgan Chase. Use of this unpublished work for any purpose other than the intended application is strongly discouraged. Disclosure or reproduction of any of the information contained within these documents without the written consent of the owner is strictly prohibited.</div>		SHT.		5		TRR		Project No. 08-1218		11/16/10		TRR		IK		GRAPHICS DEPICTED ARE FOR ILLUSTRATIVE PURPOSES ONLY! USE ONLY APPROVED ARTWORK FOR PRODUCTION.			
										7/30/10		TRR		IK					
										6/1/09		TRR		IK					
										5/15/09		TRR		IK					
										REV. DATE		DESCRIPTION		BY: APR:					
		OF		12		DATE: 1/27/09		Drawing No. B244040		9/11/19		TRR		IK		CAN-ATM-SIG-OCT <div>9/11/19</div> <div>TRR</div> <div>IK</div>			
										7/30/10		TRR		IK					
										6/1/09		TRR		IK					
										5/15/09		TRR		IK					
										REV. DATE		DESCRIPTION		BY: APR:					

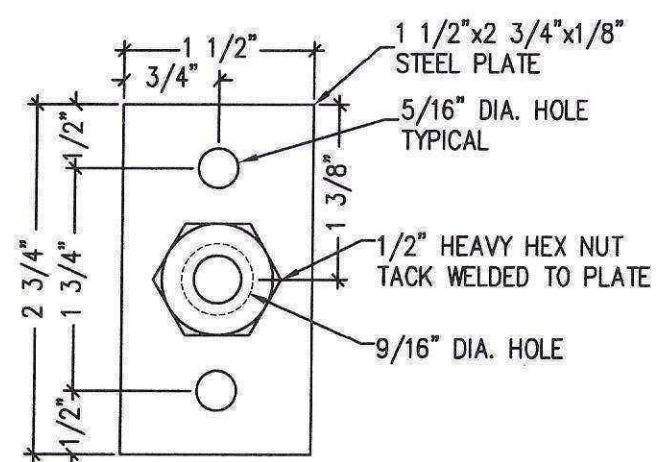
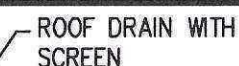




DEPARTURE COLUMN  
ASSEMBLED ELEVATION







### BOLT PLATE DETAIL



	2/18/11	CHANGED COLOR TO RFP-10648 DARK BROWN. REVISED WHITE COATINGS ON RFP-10649. CHANGED COATING ON APPROACH COLUMN TO PINK-TALL. CHANGED APPROACH COLUMN COATING TO BLUE. CHANGED APPROACH COLUMN COATING TO BLUE FROM WHITE.	TRR	IK		11/22/11	CHANGED DEPARTURE COLUMN COLOR TO RFP-10648 MODEL FROM RFP-43653 METALLIC BLUE.	TRR	IK		10/31/13	ADDED TACK WELD SYMBOL TO A.B. DETAILS	TRR	IK		9/6/16	CHANGED RUUD LIGHT FIXTURE TO CREE	TRR	IK		11/14/17	CHANGED COLUMN TOP PLATES TO 1/2" FROM 1/4"	JO	II
						8/31/11	REVISED OCTAGON OF LOGO ON DEPARTURE SIDE OF CANOPY.	TRR	IK		7/23/12	REVISED APPROACH COLUMN FOR SERVICABILITY	TRR	IK		6/20/16	CHANGED PERMULIGHT LEDs TO GE	TRR	IK		10/2/17	UPDATED E-COS SERIES LIGHT FIXTURES TO THE E-COSM SERIES LIGHT FIXTURES	JO	II
	12/15/10	ADDED HEADACHE BAR ANCHOR DETAILS	TRR	IK		4/1/11	CHANGED DESIGNATION FROM CAN-ATM TO CAN-ATM-SG-OCT. CHANGED CANOPY MOUNTING BOLTS FROM 3/8" DIA. TO 1/2" DIA.	TRR	IK		2/22/12	REVISED FOUNDATION	TRR	IK		12/10/14	ADDED HID FIXTURES TO BACK OF CANOPY	TRR	IK		6/29/17	REVISED FOUNDATION DETAILS & UPDATED LEDs & DOWNLIGHTS	JO	II
			These documents represent prototypical design drawings created specifically for use by J.P. Morgan Chase. Use of this unpublished work for any purpose other than the intended application is strongly discouraged. Disclosure or reproduction of any of the information contained within these documents without the written consent of the owner is strictly prohibited.					SHT.	BY:	Project No.		11/16/10	ADDED NOTE TO PAINT LIGHT FIXTURE TRIM TO MATCH CANOPY	TRR	IK	GRAPHICS DEPICTED ARE FOR ILLUSTRATIVE PURPOSES ONLY! USE ONLY APPROVED ARTWORK FOR PRODUCTION.				DESIGNATION:  CAN-ATM-SIG-OCT				
					7	OF	TRR	08-1218		7/30/10	ADDED CLEAR COAT NOTE	TRR	IK											
					12	DATE:	Drawing No.		6/1/09	ADDED CAP PLATE TO OCTAGON MOUNTING STUB CALLED SECURITY CAMERA TO BE BY OTHERS	TRR	IK												
						1/27/09	B244040		5/15/09	CHANGED CANOPY TO PSCO DESIGN	TRR	IK												
											REV	DATE	DESCRIPTION	RY	APP-									

**CHASE** 

These documents represent prototypical design drawings created specifically for use by J.P. Morgan Chase. Use of this unpublished work for any purpose other than the intended application is strongly discouraged. Disclosure or reproduction of any of the information contained within these documents without the written consent of the owner is strictly prohibited.

GRAPHICS DEPICTED ARE FOR  
ILLUSTRATIVE PURPOSES ONLY!  
USE ONLY APPROVED ARTWORK  
FOR PRODUCTION.

DESIGNATION:

CAN-ATM-SIG-OCT

CHANGED ROOF OCTAGON  
FACES TO CURVED SURFACES  
CHANGED ROOF OCTAGON  
MOUNTING TUBES TO J-BONE  
THICK FROM .125" CHAMFER  
PLACEMENT OF J-BONE  
APPROACH COLUMN FROM  
BETTER SERVICE ACCESS  
EXTENDED FOUNDATIONS  
INCLUDE ELECT. PIPES





<div>CHASE</div>	CHANGED COLOR TO 80%-90% DARK BROWN. REVERSED ROOF OCTAGON ON SERVICO COLUMN. CHANGED APPROACH COLUMN TO 1/2" DIA. FROM 1/4".		TRR	IK		2/18/11	CHANGED DEPARTURE COLUMN COLOR TO 80%-90% DARK BROWN. FROM 80%-90% METALLIC BLUE.		TRR	IK		11/22/11	ADDED TACK WELD SYMBOL TO A.B. DETAILS		TRR	IK		9/6/16	CHANGED RUUD LIGHT FIXTURE TO CREE		TRR	IK		11/14/17	CHANGED COLUMN TOP PLATES TO 1/2" FROM 1/4"		JO	IK						
	CHANGED APPROACH COLUMN COLOR TO 80%-90% DARK BROWN. FROM 80%-90% METALLIC BLUE.		TRR	IK		8/31/11	REVERSED OCTAGON ON ROOF TO CORRECT ORIENTATION OF LOGO ON DEPARTURE SIDE OF CANOPY		TRR	IK		7/23/12	REVISED APPROACH COLUMN FOR SERVICABILITY		TRR	IK		6/20/16	CHANGED PERMILIGHT LEDs TO GE		TRR	IK		10/2/17	UPDATED E-COS SERIES LIGHT FIXTURES TO THE E-CSM40 SERIES LIGHT FIXTURES		JO	IK						
	ADDED HEADACHE BAR ANCHOR DETAILS		TRR	IK		12/15/10	CHANGED DESIGNATION FROM CAN-ATM TO CAN-ATM-SIG-OCT		TRR	IK		4/1/11	CHANGED CANOPY MOUNTING BOLTS FROM 3/8" DIA. TO 1/2" DIA.		TRR	IK		2/22/12	REVISED FOUNDATION		TRR	IK		12/10/14	ADDED HID FIXTURES TO BACK OF CANOPY		TRR	IK		6/29/17	REVISED FOUNDATION DETAILS & UPDATED LEDS & DOWNLIGHTS		JO	IK
	These documents represent prototypical design drawings created specifically for use by J.P. Morgan Chase. Use of this unpublished work for any purpose other than the intended application is strongly discouraged. Disclosure or reproduction of any of the information contained within these documents without the written consent of the owner is strictly prohibited.		SHT.	BY:	Project No.		11/16/10	ADDED NOTE TO PAINT LIGHT FIXTURE TRIM TO MATCH CANOPY		TRR	IK	GRAPHICS DEPICTED ARE FOR ILLUSTRATIVE PURPOSES ONLY! USE ONLY APPROVED ARTWORK FOR PRODUCTION.										DESIGNATION:  CAN-ATM-SIG-OCT					9/11/19	TRR	IK	CHANGED ROOF OCTAGON FACES TO CURVED STYLE. CHANGED ROOF OCTAGON MOUNTING RAILS TO 1/8" THICK FROM 1/2". CHANGED IN PLACEMENT OF J-BOLDS IN APPROACH COLUMN FOR BETTER SERVICE ACCESS. EXTENDED FOUNDATION TO INCLUDE ELECT. PEDestal.				
			8	TRR	08-1218		7/30/10	ADDED CLEAR COAT NOTE		TRR	IK																							
OF	DATE:	Drawing No.		6/1/09	ADDED CAP PLATE TO OCTAGON MOUNTING STUD CALLED SECURITY CAMERA TO BE BY OTHERS		TRR	IK																										
12	1/27/09	B244040		5/15/09	CHANGED CANOPY TO PSCO DESIGN		TRR	IK																										
		REV. DATE	DESCRIPTION	BY:	APPR:																													



























## INSTALLATION ELEVATION

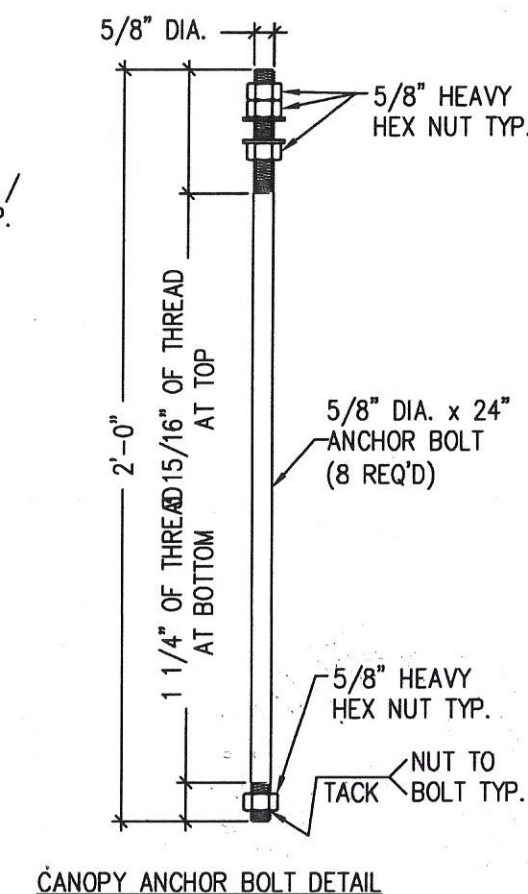
SIDE VIEW AT DEPARTURE COLUMN

REBAR SCHEDULE		DO NOT WELD REBAR	
SPREAD FOUNDATION	SIZE	SPACING	QUANTITY
PLACEMENT			
OVERTURN BOTTOM STEEL	#5	12"	17
OVERTURN TOP STEEL	#5	12"	17
BOTTOM CROSS STEEL	#5	13"	4
TOP CROSS STEEL	#5	13"	4



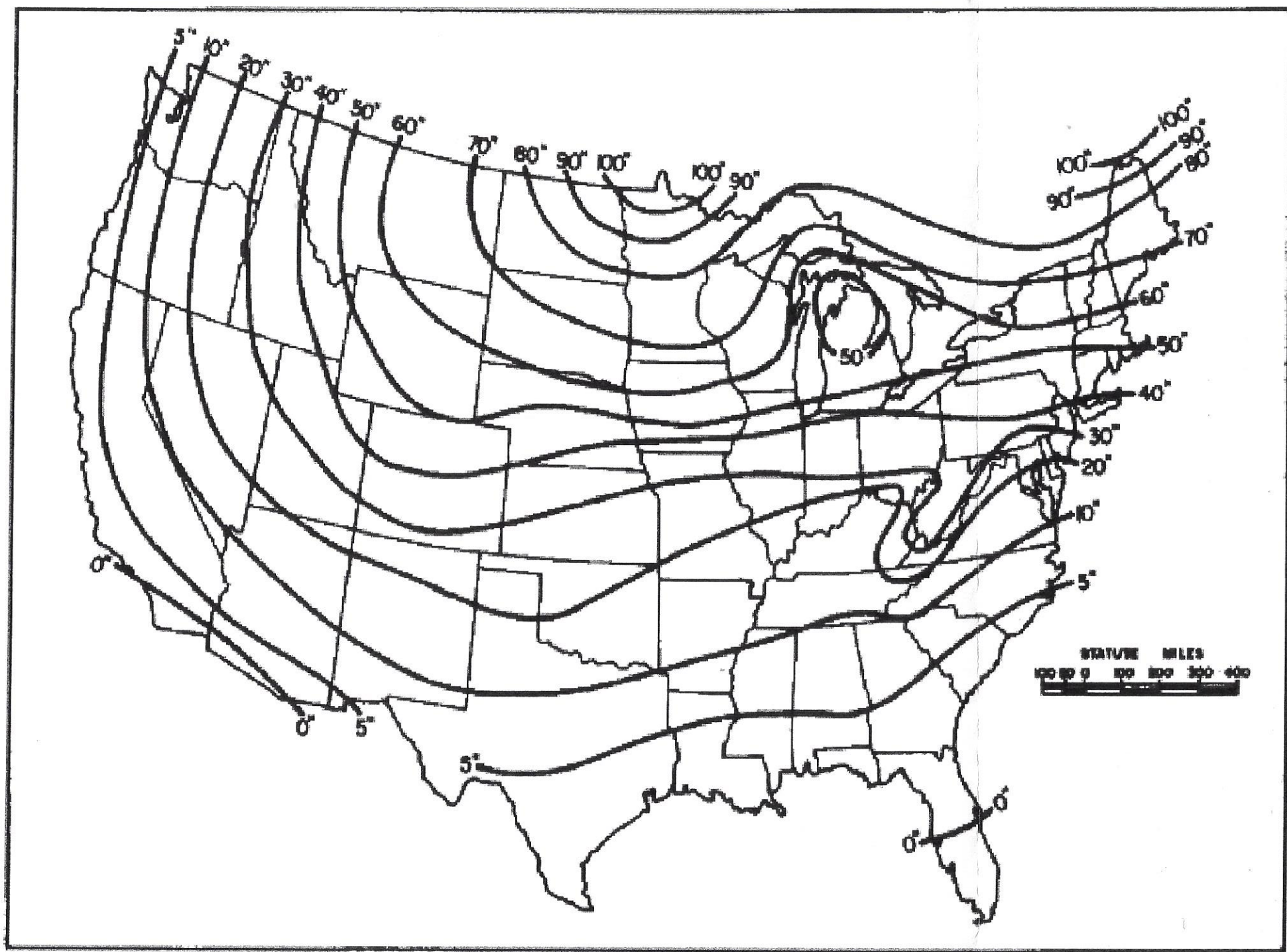
	2/18/11		CHANGED COLUMN COLOR TO R/P-SEAS DARK BLUE. COORDINATE THESE OCTAGONS ON ROOFING COLUMN. CHANGED OCTAGON OF APPROACH COLUMN TO P/SH-DARK BLUE. CHASE COPY SHIP-CHANGING ROOF OCTAGON TO P/SH-DARK BLUE. CHASE APPROACH COLUMN OCTAGON BLUE TO BLUE FINE.	TRR	IK	 11/22/11  8/31/11	CHANGED DEPARTURE COLUMN COLOR TO R/P-1824S DARK MICHEL FROM R/P-4033S METALLIC BLUE REVISIT OCTAGON ON ROOF TO CORRECT ORIENTATION OF LOGO ON DEPARTURE SIDE OF CANOPY CHANGED DESIGNATION FROM CAN-ATM TO CAN-ATM-SIG-OCT CHANGED CANOPY MOUNTING BOLTS FROM 3/8" DIA. TO 1/2" DIA.	TRR	IK	 10/31/13  7/23/12  2/22/12	ADDED TACK WELD SYMBOL TO A.B. DETAILS REVISED APPROACH COLUMN FOR SERVICABILITY REVISED FOUNDATION	TRR	IK	 9/6/16  6/20/16  12/10/14	CHANGED RUUD LIGHT FIXTURE TO CREE CHANGED PERMILIGHT LED'S TO GE ADDED HID FIXTURES TO BACK OF CANOPY	TRR	IK	 11/14/17  10/2/17  6/29/17	CHANGED COLUMN TOP PLATES TO 1/2" FROM 1/4" UPDATED E-COS SERIES LIGHT FIXTURES TO THE E-COS40 SERIES LIGHT FIXTURES REVISED FOUNDATION DETAILS & UPDATED LED'S AND DOWNLIGHTS	JO	IK				
	12/15/10		ADDED HEADACHE BAR ANCHOR DETAILS	TRR	IK	 4/1/11	CHANGED DESIGNATION FROM CAN-ATM TO CAN-ATM-SIG-OCT CHANGED CANOPY MOUNTING BOLTS FROM 3/8" DIA. TO 1/2" DIA.	TRR	IK	 2/22/12	REVISED FOUNDATION	TRR	IK	 12/10/14	ADDED HID FIXTURES TO BACK OF CANOPY	TRR	IK	 6/29/17	REVISED FOUNDATION DETAILS & UPDATED LED'S AND DOWNLIGHTS	JO	IK				
	These documents represent prototypical design drawings created specifically for use by J.P. Morgan Chase. Use of this unpublished work for any purpose other than the intended application is strongly discouraged. Disclosure or reproduction of any of the information contained within these documents without the written consent of the owner is strictly prohibited.																								
		SHT. 10 OF 12		BY: TRR		Project No. 08-1218		 11/16/10  7/30/10  6/1/09  5/15/09		ADDED NOTE TO PAINT LIGHT FIXTURE TRIM TO MATCH CANOPY ADDED CLEAR COAT NOTE ADDED CAP PLATE TO OCTAGON MOUNTING STUD CALLED SECURITY CAMERA TO BE BY OTHERS CHANGED CANOPY TO PSCO DESIGN		TRR IK TRR IK TRR IK TRR IK		GRAPHICS DEPICTED ARE FOR ILLUSTRATIVE PURPOSES ONLY! USE ONLY APPROVED ARTWORK FOR PRODUCTION.				DESIGNATION:  CAN-ATM-SIG-OCT		 9/11/19		CHANGED ROOF OCTAGON FACES TO CURVED STYLE. CHANGED ROOF OCTAGON MOUNTING RAILS TO 1/8" THICK FROM 1/4". CHANGED PLACEMENT OF J-BOLTS IN APPROACH COLUMN FOR BETTER SERVICE ACCESS. EXTENDED FOUNDATION TO INCLUDE ELEC. PENETRAL		TRR IK	
		DATE: 1/27/09		Drawing No. B244040		REV. DATE DESCRIPTION BY: APR:																			







07/07/2020



WHERE THE EXTREME FROST PENETRATION DEPTH REQUIREMENT IS GREATER THAN THE SPECIFIED DEPTH OF THE FOUNDATION SHOWN ON SHEET 10 OF 12, THE FOUNDATION DESIGN SHOULD BE ALTERED TO MEET THE LOCAL FROST DEPTH REQUIREMENTS. SEE MAP AT LEFT FOR GENERAL GUIDELINES.

FIGURE 7  
Extreme Frost Penetration (in inches) Based Upon State Average



2/18/11	CHANGED COLOR TO 100% WHITE. REVISED WIRE COORDINATES OF APPROACH COLUMN. CHANGED COLOR OF APPROACH COLUMN TO 100% WHITE. CHANGED APPROACH COLUMN DESIGN TO 100% WHITE. CHANGED APPROACH COLUMN DESIGN TO 100% WHITE.	TRR	IK	11/22/11	CHANGED DEPARTURE COLUMN COLOR TO 100% WHITE. CHANGED DEPARTURE COLUMN COLOR TO 100% WHITE. CHANGED DEPARTURE COLUMN COLOR TO 100% WHITE.	TRR	IK	10/31/13	ADDED TACK WELD SYMBOL TO A.B. DETAILS	TRR	IK	9/6/16	CHANGED RUUD LIGHT FIXTURE TO CREE	TRR	IK	11/14/17	CHANGED COLUMN TOP PLATES TO 1/2" FROM 1/4"	JO	IK
12/15/10	ADDED HEADACHE BAR ANCHOR DETAILS	TRR	IK	8/31/11	REVISED OCTAGON ON ROOF TO CORRECT ORIENTATION OF LOGO ON DEPARTURE SIDE OF CANOPY	TRR	IK	7/23/12	REVISED APPROACH COLUMN FOR SERVICABILITY	TRR	IK	6/20/16	CHANGED PERMLIGHT LEDs TO GE	TRR	IK	10/2/17	UPDATED E-CSS SERIES LIGHT FIXTURES TO THE E-CSS44 SERIES LIGHT FIXTURES	JO	IK
				4/1/11	CHANGED DESIGNATION FROM CAN-ATM TO CAN-ATM-SIG-OCT	TRR	IK	2/22/12	REVISED FOUNDATION	TRR	IK	12/10/14	ADDED HID FIXTURES TO BACK OF CANOPY	TRR	IK	6/29/17	REVISED FOUNDATION DETAILS & UPDATED LEDs & DOWNLIGHTS	JO	IK
<b>CHASE</b>		These documents represent prototypical design drawings created specifically for use by J.P. Morgan Chase. Use of this unpublished work for any purpose other than the intended application is strongly discouraged. Disclosure or reproduction of any of the information contained within these documents without the written consent of the owner is strictly prohibited.		SHT. 12 OF 12		BY: TRR		Project No. 08-1218		Drawing No. B244040		11/16/10	ADDED NOTE TO PAINT LIGHT FIXTURE TRIM TO MATCH CANOPY	TRR	IK	GRAPHICS DEPICTED ARE FOR ILLUSTRATIVE PURPOSES ONLY! USE ONLY APPROVED ARTWORK FOR PRODUCTION.			
												7/30/10	ADDED CLEAR COAT NOTE	TRR	IK				
												6/1/09	ADDED CAP PLATE TO OCTAGON MOUNTING STUB CALLED SECURITY CAMERA TO BE BY OTHERS	TRR	IK				
												5/15/09	CHANGED CANOPY TO PSCC DESIGN	TRR	IK				
												REV. DATE	DESCRIPTION	BY:	APR:				
																DESIGNATION: CAN-ATM-SIG-OCT			
												9/11/19	CHANGED ROOF OCTAGON FACES TO CURVED STYLE. CHANGED ROOF OCTAGON MOUNTING TUBES TO .188" THICK FROM .125". CHANGED PLACEMENT OF J-BOLTS IN APPROACH COLUMN FOR Easier SERVICE ACCESS. EXTENDED FOUNDATION TO INCLUDE ELECT. PENETRAL.	TRR	IK				