

**CHASE**



**GOLDEN SANDS**  
 GENERAL CONTRACTORS



**2000 SHAWNEE MISSION PARKWAY**  
**STE 100 SHAWNEE WOODS, KS 66205**  
**TEL 816 502 1500 FAX 816 842 1878**

REES MASILIONIS TURLEY ARCHITECTURE, LLC  
 MISSOURI CERTIFICATE OF AUTHORITY # 00918

MATTHEW MASILIONIS - ARCHITECT  
 MISSOURI # A-6005

I have prepared the drawings and assume responsibility for the sheets numbered with an "A" prefix for the project named below.

Other drawings and specifications attached for the above-mentioned project have been by and are the responsibility of the licensed engineer whose stamp and firm appear on that sheet.

The Architect is not responsible for the design of the mechanical, electrical, plumbing, civil, landscaping, structural, signage (not specified), fire sprinkler or fire suppression systems, and does not take responsibility for the compliance of these areas with the laws of the above governmental entities. The architect is not responsible for materials, components or equipment, as well as the method in which they are installed on the project by others. The Architect is not hired or responsible for construction, during construction or upon completion of construction. The Architect is not responsible for improper operation due to faulty installation or product failure during construction or after completion of construction when operation has begun by the landlord or tenant.

The licensed professional whose stamp appears on sheets other than those specifically noted above shall be responsible for those items in paragraph three.

PROJECT  
**BLUE PARKWAY  
 & JEFFERSON ST.  
 DRIVE-UP ATM**

276 SW BLUE PARKWAY  
 LEE'S SUMMIT, MISSOURI 64063

SHEET TITLE  
**COVER SHEET**

PROJECT NUMBER  
 2019033.060

SHEET AUTHOR  
 TEM

CHECKED BY  
 RAB

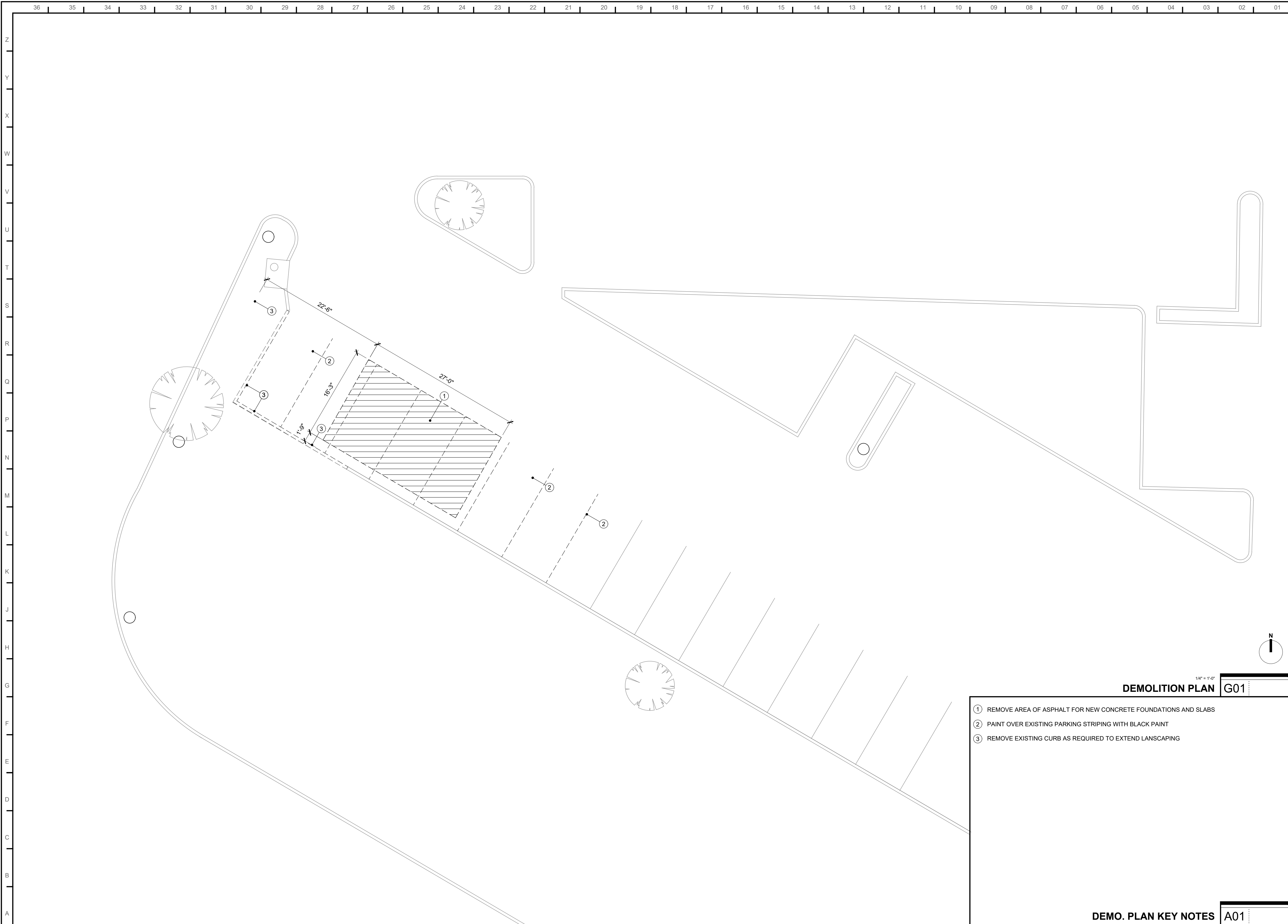
DATE  
 JULY 1, 2019

© 2019 Rees Masilionis Turley Architecture, LLC  
 All rights reserved. No part of this document may be reproduced or utilized in any form without the prior written authorization of Rees Masilionis Turley Architecture, LLC.

SHEET NUMBER  
**A00**

RMTA/BIZ





DEMOLITION PLAN G01

- 1 REMOVE AREA OF ASPHALT FOR NEW CONCRETE FOUNDATIONS AND SLABS
- 2 PAINT OVER EXISTING PARKING STRIPING WITH BLACK PAINT
- 3 REMOVE EXISTING CURB AS REQUIRED TO EXTEND LANSCAPING

DEMO. PLAN KEY NOTES A01



**GOLDEN SANDS**  
GENERAL CONTRACTORS

**RMTA**

2000 SHAWNEE MISSION PARKWAY  
STE 100 MISSION WOODS, KS 66205  
TEL 816 502 1500 FAX 816 842 1878

REES MASILOUIS TURLEY ARCHITECTURE, LLC  
MISSOURI CERTIFICATE OF AUTHORITY # 00918

MATTHEW MASILOUIS - ARCHITECT  
MISSOURI # A-6005

I have prepared the drawings and assume responsibility for the sheets numbered with an "A" prefix for the project named below.

Other drawings and specifications attached for the above-mentioned project have been by and are the responsibility of the licensed engineer whose stamp and firm appear on that sheet.

The Architect is not responsible for the design of the mechanical, electrical, plumbing, civil, landscaping, structural, signage (not specified), fire sprinkler or fire suppression systems; and does not take responsibility for the compliance of these areas with the laws of the above governmental entities. The architect is not responsible for materials, components or equipment, as well as the method in which they are installed on the project by others. The Architect is not hired or responsible for certification, during construction or upon completion of construction. The Architect is not responsible for improper operation due to faulty installation or product failure during construction or after completion of construction when operation has begun by the landlord or tenant.

The licensed professional whose stamp appears on sheets other than those specifically noted above shall be responsible for those items in paragraph three.

PROJECT

**BLUE PARKWAY  
& JEFFERSON ST.  
DRIVE-UP ATM**

276 SW BLUE PARKWAY  
LEE'S SUMMIT, MISSOURI 64083

SHEET TITLE

**DEMOLITION PLAN**

PROJECT NUMBER

2019033.060

SHEET AUTHOR

TEM

CHECKED BY

RAB

DATE

JULY 1, 2019

© 2019 Rees MasiLouis Turley Architecture, LLC  
All rights reserved. No part of this document may be reproduced or utilized in any form without the prior written authorization of Rees MasiLouis Turley Architecture, LLC.

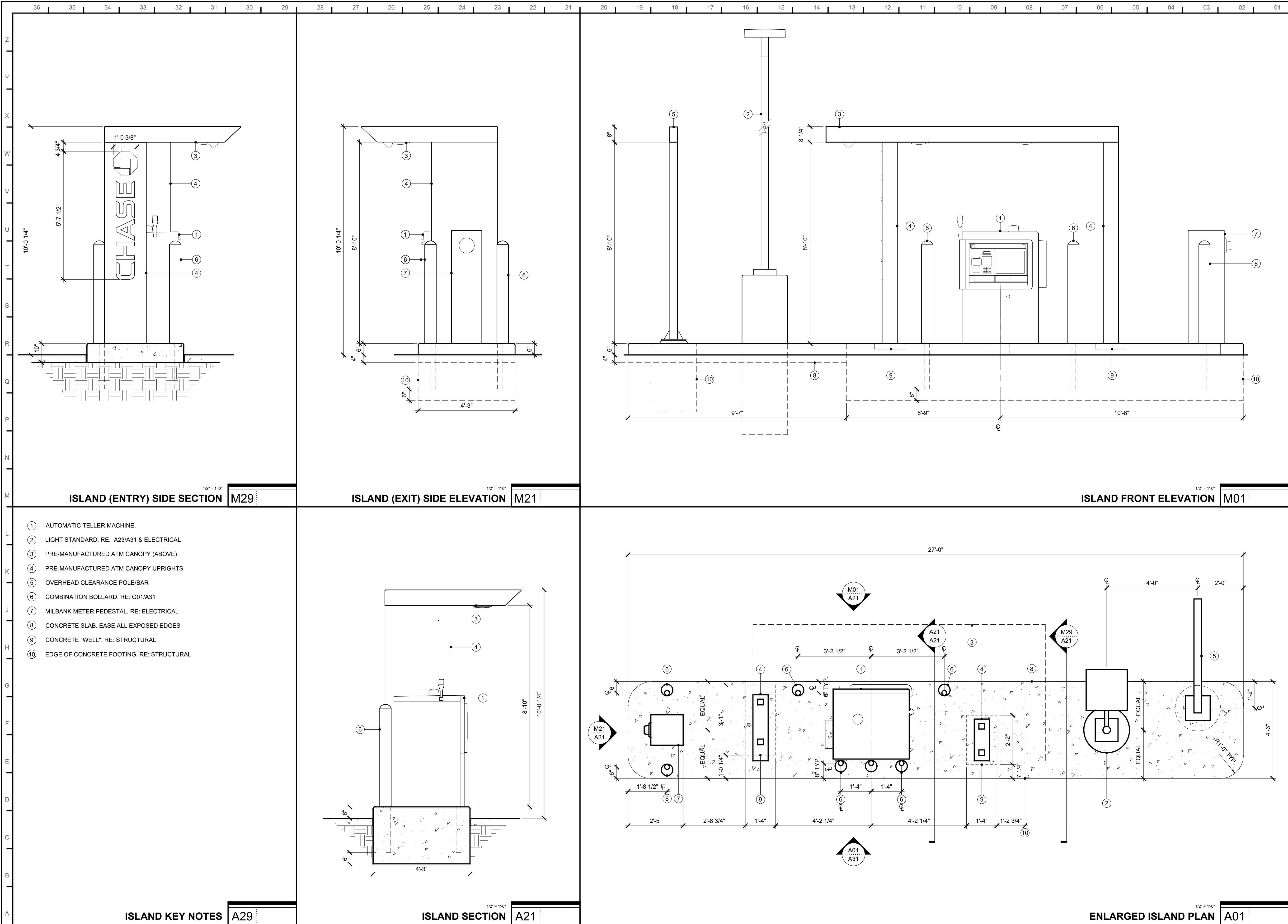
SHEET NUMBER

**A10**

RMTA.BIZ









# RMTA

REES MASILIONIS TURLEY ARCHITECTURE, LLC  
MISSOURI CERTIFICATE OF AUTHORITY # 00918

MATTHEW MASILIONIS - ARCHITECT  
MISSOURI # A-6005

I have prepared the drawings and assume responsibility for the sheets numbered with an "A" prefix on the project named below.

Other drawings and specifications attached for the above-mentioned project have been by and are the responsibility of the licensed engineer whose stamp and name appear on that sheet.

The Architect is not responsible for the design of the mechanical, electrical, plumbing, civil, landscaping, structural, signage (not specified), fire sprinkler or fire suppression systems; and does not take responsibility for the compliance of these areas with the laws of the above governmental entities. The architect is not responsible for materials, components or equipment, as well as the

method in which they are installed on the project by others. The Architect is not hired or responsible for certification, during construction or upon completion of construction. The Architect is not responsible for improper operation due to faulty installation or product failure during construction or after completion of construction when operation has begun by the landlord or tenant.

The licensed professional whose stamp appears on sheets other than those specifically noted above shall be responsible for those items in paragraph three.

PROJECT

**BLUE PARKWAY  
& JEFFERSON ST  
DRIVE-UP ATM**

6 SW BLUE PARKWAY  
E'S SUMMIT, MISSOURI 64063

## SHEET TITLE

# DETAILS

PROJECT NUMBER  
19033.060

SHEET AUTHOR  
M

CHECKED BY  
R

.....

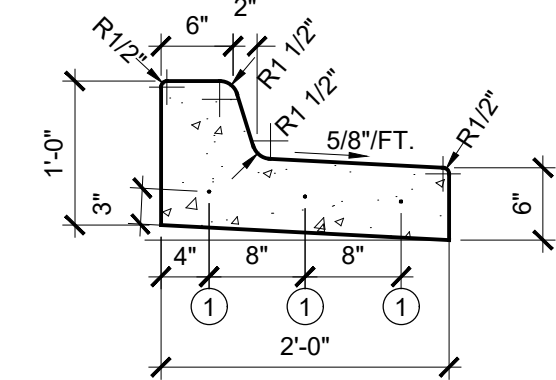
JULY 1, 2019

2019 Rees Masilionis Turley Architecture, LLC  
rights reserved. No part of this document may be  
reproduced or utilized in any form without the prior written  
authorization of Rees Masilionis Turley Architecture, LLC.

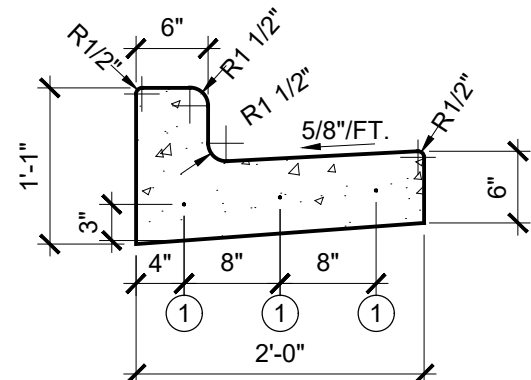
SHEET NUMBER

# A31

**RM.TA.BIZ**

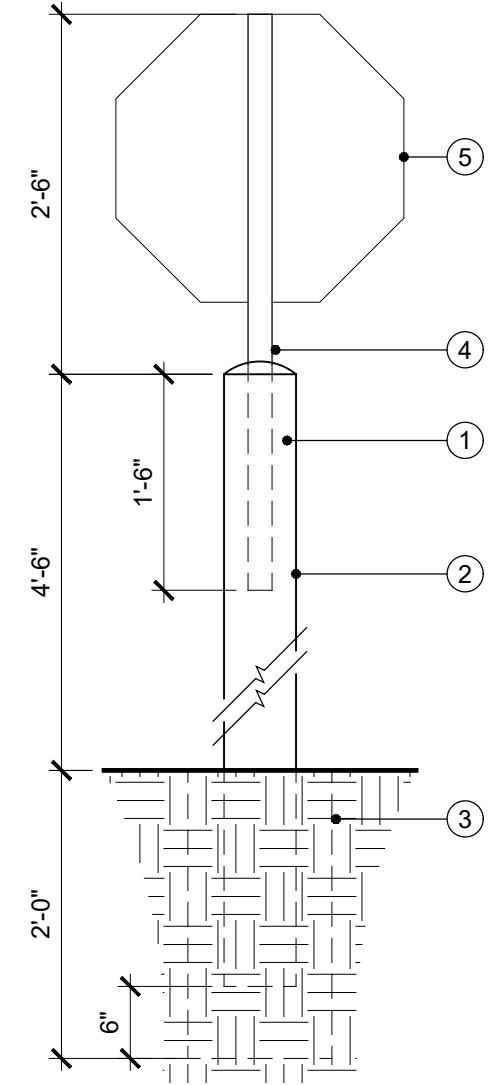


STRAIGHT BACK DRY CURB & GUTTER (TYPE CG-1 DRY)

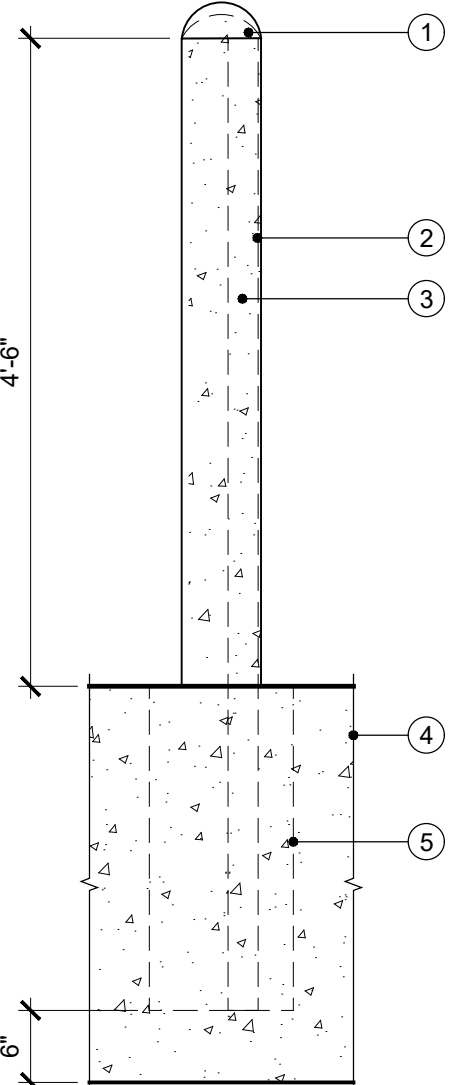


STRAIGHT BACK CURB & GUTTER (TYPE CG-1)

- ① 2' - #5 BAR SMOOTH DOWEL (TYP.)



- ① ROUNDED CONCRETE CAP. DRILL HOLE IN CAP FOR SIGN POST
- ② 6" DIA. STANDARD STEEL PIPE. FILL WITH CONCRETE. PROVIDE CHASE BLUE POLYMER COVER
- ③ 12" DIAMETER (MIN.), 2'-0" DEEP (MIN.) CONCRETE FOOTING
- ④ SIGN POST EMBEDDED IN CONCRETE BOLLARD
- ⑤ STANDARD DIRECTIONAL SIGNS, ONE SIDE TO READ "STOP" OTHER SIDE TO READ "DO NOT ENTER"



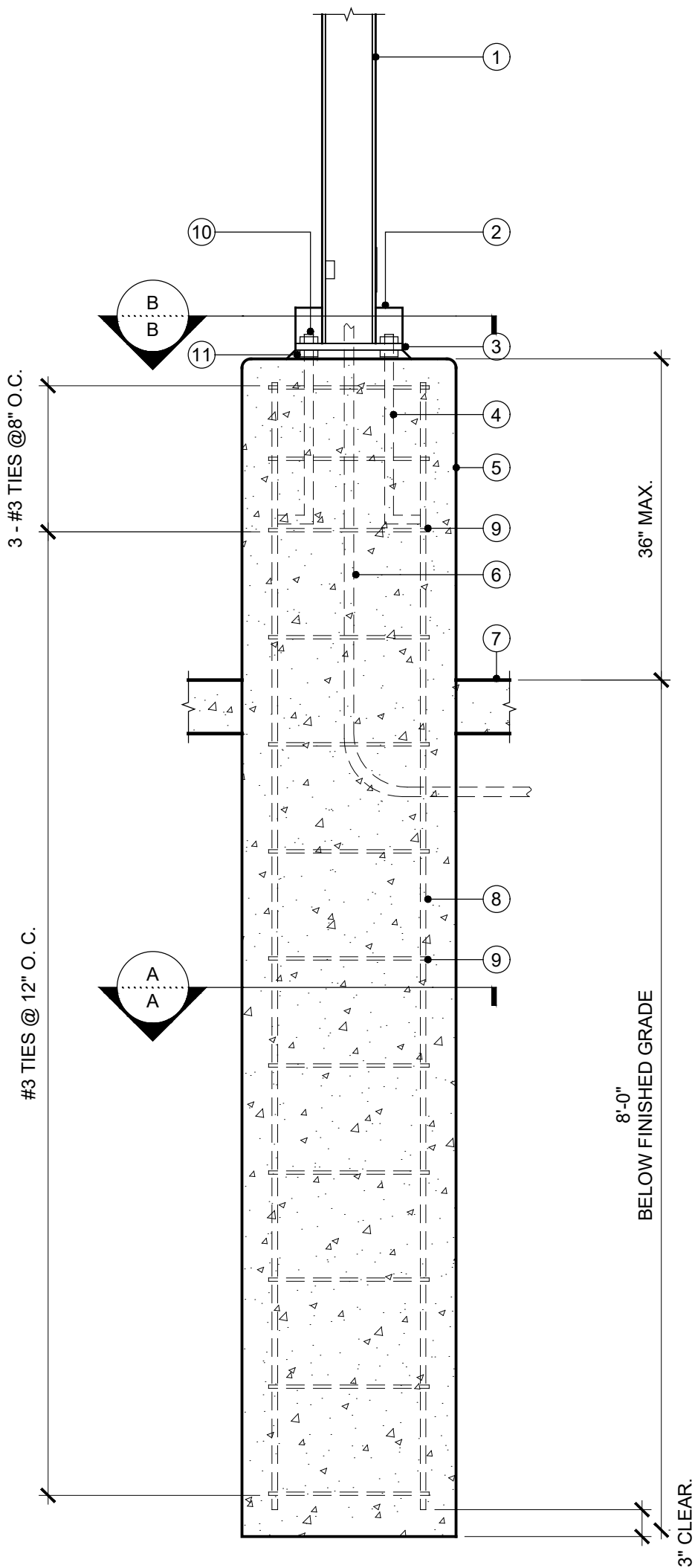
- ① ROUNDED CONCRETE CAP (BELOW POLYMER CAP)
- ② 6" NOMINAL (6.625 O.D.) STEEL PIPE. PLUG WELD TO INNER PIPE FILL WITH CONCRETE. PROVIDE CHASE BELOW POLYMER COVER
- ③ 2 1/2" NOMINAL (2.875 O.D.) STEEL PIPE INTO FOOTING. FILL WITH CONCRETE
- ④ CONCRETE FOOTINGS. RE: A01/A21
- ⑤ IF BOLLARD IS NOT IN MAIN ISLAND FOOTING PROVIDE 12" DIAMETER (MIN.), 2'-0" DEEP (MIN.) CONCRETE FOOTING

NOT USED | Q23

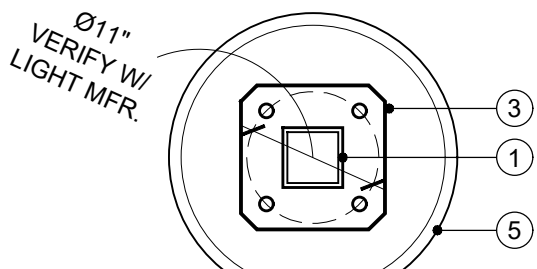
CURB DETAIL | Q15

## DIRECTIONAL SIGN DETAIL | Q08

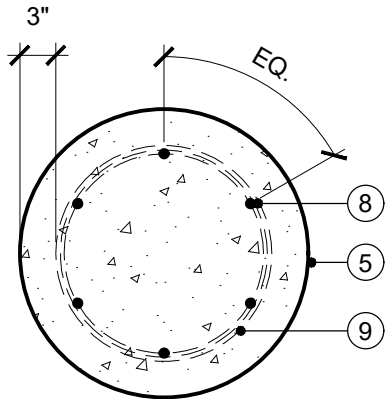
**BOLLARD DETAIL | Q01**



## SECTION B-B



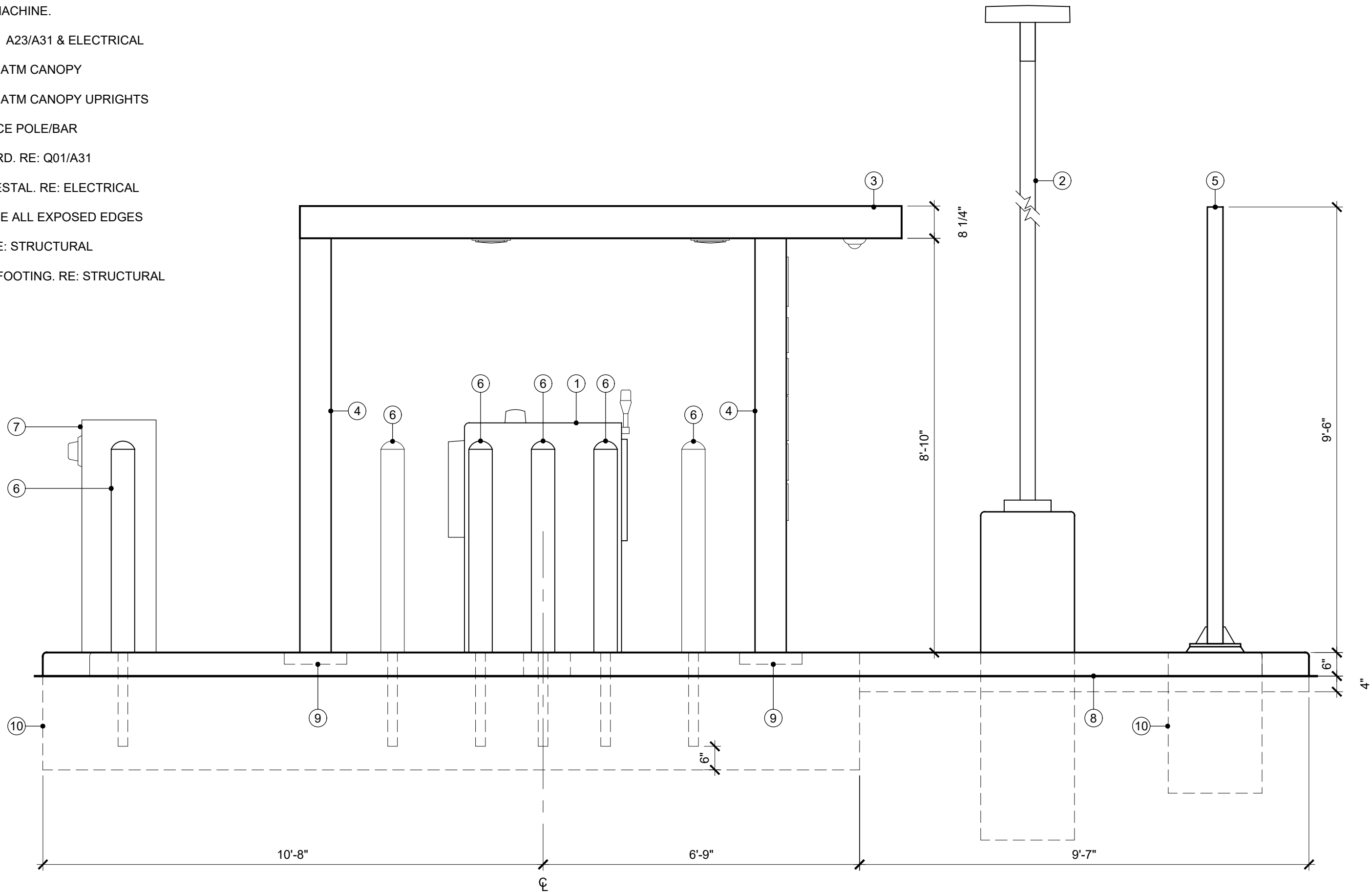
## SECTION A-A



- ① TWO-HEAD LIGHT POLE. RE: ELECTRICAL
- ② BASE COVER, BY LIGHT MANUFACTURER
- ③ BASE PLATE, BY LIGHT MANUFACTURER
- ④ FOUR (4) 5/8" DIA. X 24" (A307) ANCHOR BOLTS
- ⑤ 24" DIAMETER CONCRETE BASE, 3000 PSI CONCRETE (MIN.). SMOOTH SACK FINISH
- ⑥ 3/4" CONDUIT, RE: ELECTRICAL
- ⑦ TOP OF CONCRETE ISLAND
- ⑧ SIX (6) #6 REBAR (VERTICAL)
- ⑨ #3 WIRE TIES
- ⑩ LOCK NUT AND WASHER
- ⑪ LEVELING NUT AND WASHER

## LIGHT POLE DETAILS | A23

- ① AUTOMATIC TELLER MACHINE.
- ② LIGHT STANDARD. RE: A23/A31 & ELECTRICAL
- ③ PRE-MANUFACTURED ATM CANOPY
- ④ PRE-MANUFACTURED ATM CANOPY UPRIGHTS
- ⑤ OVERHEAD CLEARANCE POLE/BAR
- ⑥ COMBINATION BOLLARD. RE: Q01/A31
- ⑦ MILBANK METER PEDESTAL. RE: ELECTRICAL
- ⑧ CONCRETE SLAB. EASE ALL EXPOSED EDGES
- ⑨ CONCRETE "WELL". RE: STRUCTURAL
- ⑩ EDGE OF CONCRETE FOOTING. RE: STRUCTURAL



ISLAND REAR ELEVATION | A01

A01