

## HARDWARE SETS:

### SET NO. 1 SINGLE ALUMINUM MAIN ENTRY/EXIT ALL FINISHES TO MATCH DOOR

NO.	ITEM	DESCRIPTION	MANUFACTURER	FINISH
3	HANGING DEVICES	TH2314/MPB91	McKINNEY	630
1	SECURING DEVICES	MS1850S DEADBOLT	ADAMS RITE	626
1	EXIT INDICATOR	4089 EXIT INDICATOR W/HEADER SIGN: "THIS DOOR MUST REMAIN UNLOCKED WHEN BUILDING IS OCCUPIED."	ADAMS RITE	626
2	SECURING DEVICES	KB609-2 CUT CONTROL KEY "A" KEYWAY	FALCON LOCK	626
9	SECURING DEVICES	KB609-2 CUT CONTROL KEY "A" KEYWAY	FALCON LOCK	626
2	SECURING DEVICES	KB632-2 CUT USER KEY "A" KEYWAY	FALCON LOCK	626
2	SECURING DEVICES	C987 7-PIN MORTISE CYLINDER HOUSING W/AR CAM	FALCON LOCK	622
1	OPERATING TRIM	A08794-003 ADJUSTABLE RING, MORTISE CYL. 5/16-13/32	FALCON LOCK	622
1	OPERATING TRIM	106 DOOR PULL HANDLE	ROCKWOOD	630
1	CLOSING DEVICES	48 PUSH BAR X 31	ROCKWOOD	689
1	STOPS AND HOLDERS	8916 DOOR CLOSER 8916 AF89P	DORMA	626
1	THRESHOLD	473 DOOR STOP W/HOOK	ROCKWOOD	626
1	THRESHOLD	325 HALF SADDLE THRESHOLD (H.C. APPROVED)	NATIONAL GUARD	626

### SET NO. 2 SERVICE DOOR, EXTERIOR (42" WIDE DOOR)

NO.	ITEM	DESCRIPTION	MANUFACTURER	FINISH
3	HANGING DEVICES	TH2314/MPB91	McKINNEY	630
1	SECURING DEVICES	C607 7-PIN CORE COMBINATION "A" KEYWAY	FALCON LOCK	626
1	SECURING DEVICES	I/O 2000L-031C AUTO LOCKING DOOR ALARM, I.C. NO CTR INCLUDES MORTISE CYLINDER	SUR-LOCK	626
1	CLOSING DEVICES	8916 DOOR CLOSER 8916 AF89P	DORMA	689
1	PROTECTIVE TRIM UNITS	K1050 B4E KICKPLATE 10 X 40	ROCKWOOD	630
1	ACCESSORIES	16A RAIN DRIP 46"	NATIONAL GUARD	A
1	ACCESSORIES	137NA WEATHER STRIP 17" 5' 42 X 84	NATIONAL GUARD	A
1	ACCESSORIES	C607A DOOR SWEEP 42"	NATIONAL GUARD	A
1	MISCELLANEOUS ITEMS	DS-6 DOOR SPY	SECURITY PRODUCTS	SILVER
1	MISCELLANEOUS ITEMS	MCV309NWHGL DOOR BELL	NUTONE	AS SELECTED
1	STOPS AND HOLDERS	473 DOOR STOP W/HOOK	ROCKWOOD	626
1	THRESHOLD	325 HALF SADDLE THRESHOLD (H.C. APPROVED)	NATIONAL GUARD	626

### SET NO. 3 EXIT DOOR, EXTERIOR (36" WIDE DOOR)

NO.	ITEM	DESCRIPTION	MANUFACTURER	FINISH
3	HANGING DEVICES	TH2314/MPB91	McKINNEY	630
1	SECURING DEVICES	C607 7-PIN CORE COMBINATION "A" KEYWAY	FALCON LOCK	626
1	SECURING DEVICES	I/O 2000L-031C AUTO LOCKING DOOR ALARM, I.C. NO CTR INCLUDES MORTISE CYLINDER	SUR-LOCK	626
1	CLOSING DEVICES	8916 DOOR CLOSER 8916 AF89P	DORMA	689
1	PROTECTIVE TRIM UNITS	K1050 B4E KICKPLATE 10 X 34	ROCKWOOD	630
1	ACCESSORIES	16A RAIN DRIP 40"	NATIONAL GUARD	A
1	ACCESSORIES	137NA WEATHER STRIP 17" 36 X 84	NATIONAL GUARD	A
1	ACCESSORIES	C607A DOOR SWEEP 36"	NATIONAL GUARD	A
1	MISCELLANEOUS ITEMS	DS-6 DOOR SPY	SECURITY PRODUCTS	SILVER
1	STOPS AND HOLDERS	473 DOOR STOP W/HOOK	ROCKWOOD	626
1	THRESHOLD	325 HALF SADDLE THRESHOLD (H.C. APPROVED)	NATIONAL GUARD	626

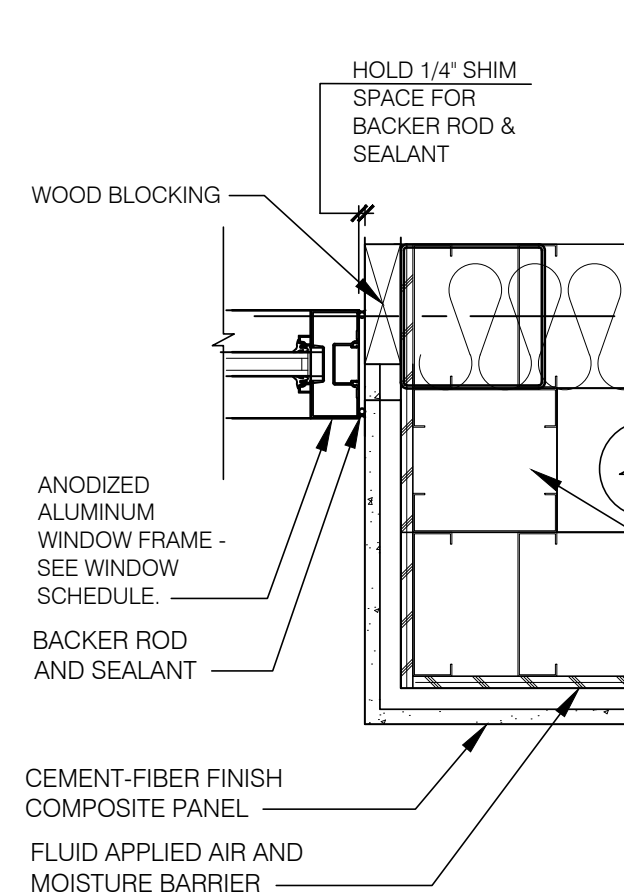
STARBUCKS SHELL DOOR SCHEDULE										
MK	DESCRIPTION	DOOR			HARDWARE TYPE	FRAME		DETAILS		REMARKS
		SIZE (W x H x D)	TYPE	MATERIAL		MATERIAL	FINISH	HEAD	JAMB	
01	STOREFRONT ENTRY	3'-0" X 7'-0" X 1 3/4"	A	ALUM.	01	ALUM.	BLACK	-	-	REFER TO DETAIL 1/A601 FOR SIGNAGE
03	EXTERIOR ACCESS	3'-6" X 7'-0" X 1 3/4"	B	H.M. (PAINTED)	02	H.M.	PAINT	3/A501	7/A501	REFER TO DETAIL 1/A601 FOR SIGNAGE
06	EXTERIOR ACCESS	3'-0" X 7'-0" X 1 3/4"	B	H.M. (PAINTED)	03	H.M.	PAINT	3/A501	7/A501	REFER TO DETAIL 1/A601 FOR SIGNAGE

LANDLORD UTILITY AND FUTURE MEDICAL OFFICE SHELL DOOR SCHEDULE										
MK	DESCRIPTION	DOOR			HARDWARE TYPE	FRAME		DETAILS		REMARKS
		SIZE (W x H x D)	TYPE	MATERIAL		MATERIAL	FINISH	HEAD	JAMB	
02	STOREFRONT ENTRY	3'-0" X 7'-0" X 1 3/4"	A	ALUM.	ENTRY FUNCTION W/ EMERGENCY EGRESS HARDWARE	ALUM.	BLACK	-	-	DOOR CLOSER TO BE INSTALLED. REFER TO DETAIL 1/A601 FOR SIGNAGE
04	EXTERIOR ACCESS	3'-0" X 7'-0" X 1 3/4"	B	H.M. (PAINTED)	KEYED EXIT W/ EMERGENCY EGRESS HARDWARE	H.M.	PAINT	3/A501	7/A501	DOOR CLOSER TO BE INSTALLED. REFER TO DETAIL 1/A601 FOR SIGNAGE
05	LL ROOM EXTERIOR ACCESS	3'-0" X 7'-0" X 1 3/4"	B	H.M. (PAINTED)	KEYED EXIT	H.M.	PAINT	3/A501	7/A501	---

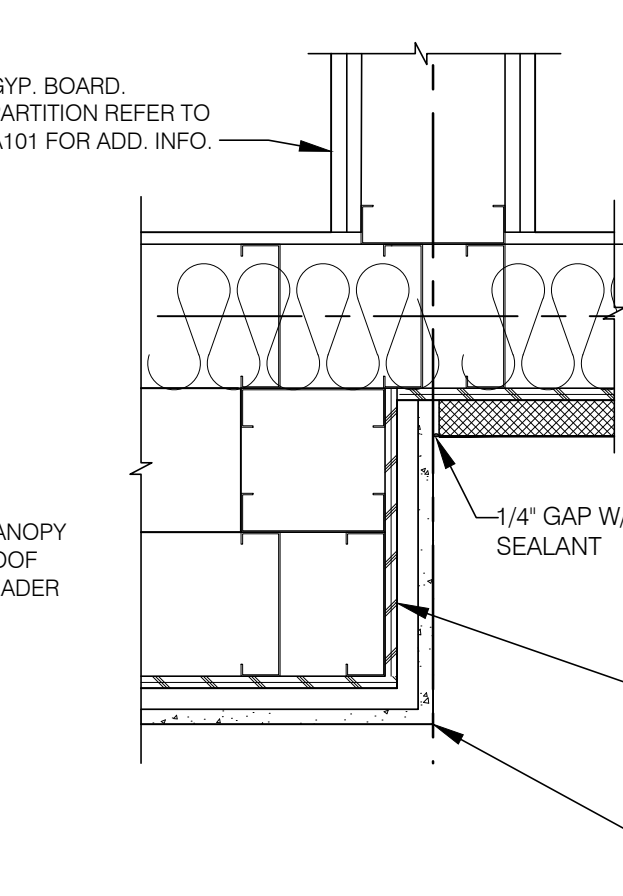
- NOTES:
1. ALL DOORS SHALL BE SHOP PREPARED FOR HARDWARE.
  2. ALL EXTERIOR DOORS TO BE KEYED ALIKE. CONTRACTOR TO FIELD VERIFY.
  3. ENTRANCE DOORS TO BE BLACK KAWNEER #29 ENTRANCE DOOR OR APPROVED EQUAL.
  4. HARDWARE FOR ALL DOORS SHOULD BE LEVER PROFILE OR SIMILAR AND SHOULD NOT REQUIRE TIGHT GRASPING, PINCHING, OR TWISTING OF THE WRIST TO OPERATE.

#### GENERAL CONTRACTOR NOTE:

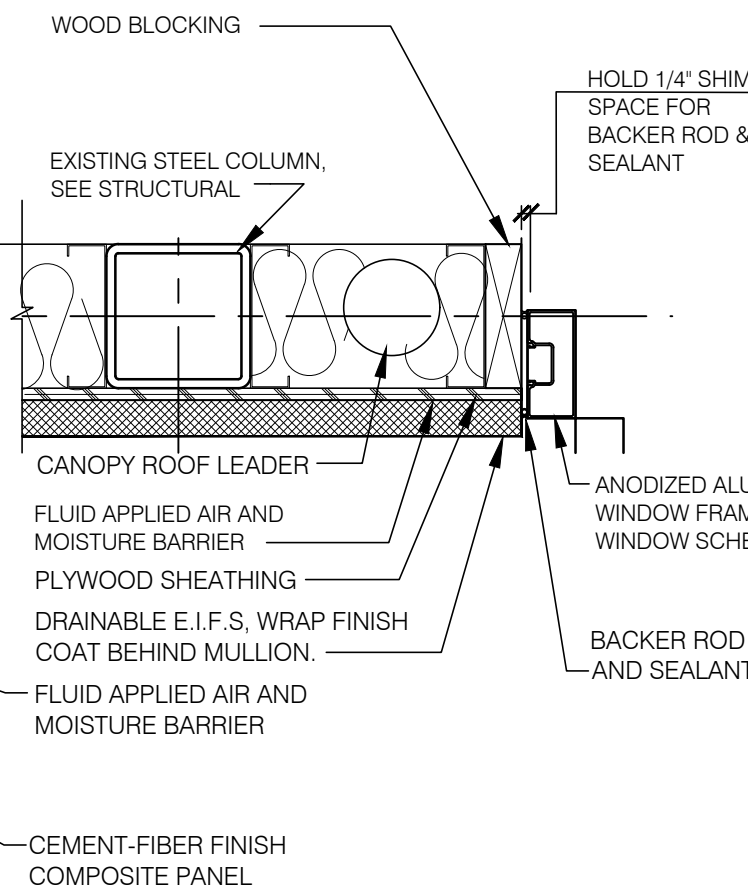
BLACK ALUMINUM MAY HAVE A LONG LEAD TIME. ALLOW ADDITIONAL TIME IN ORDERING TO MEET THE PROJECT SCHEDULE



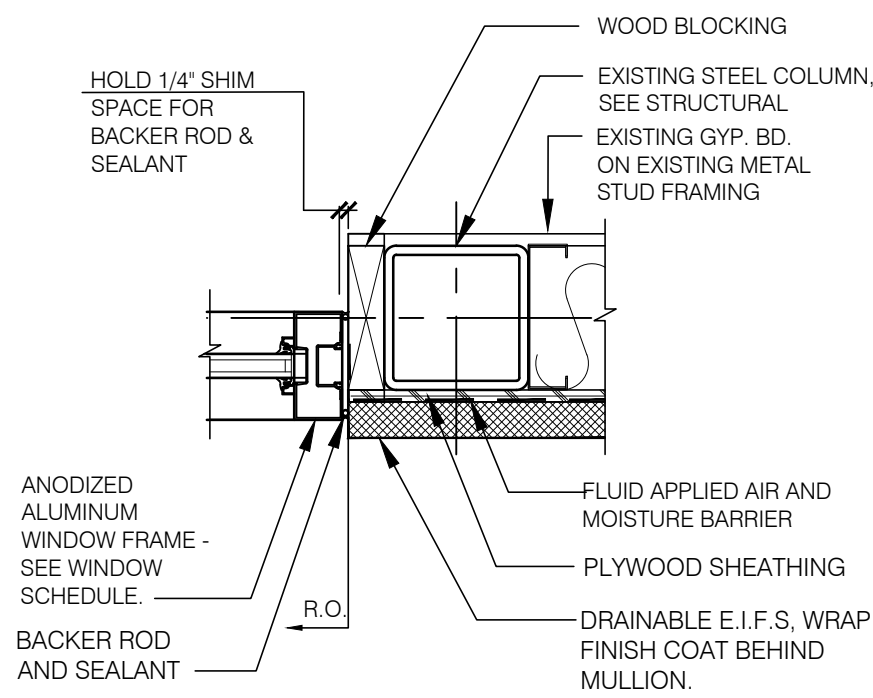
5 A601 SCALE: 1-1/2" = 1'-0"



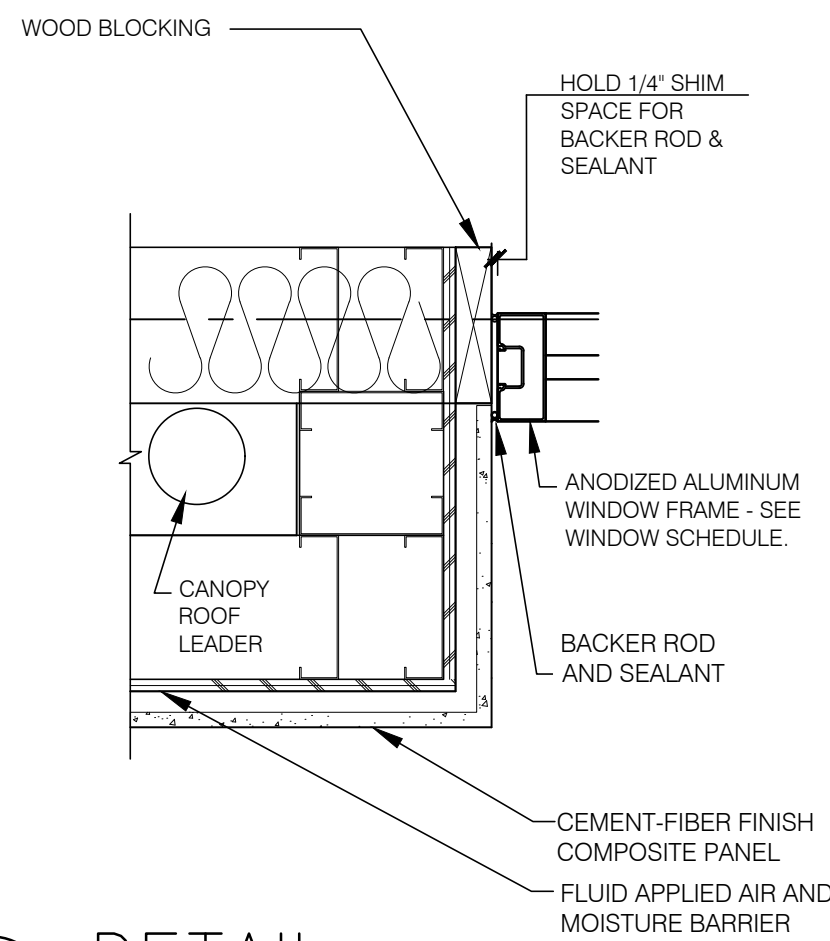
6 A601 SCALE: 1-1/2" = 1'-0"



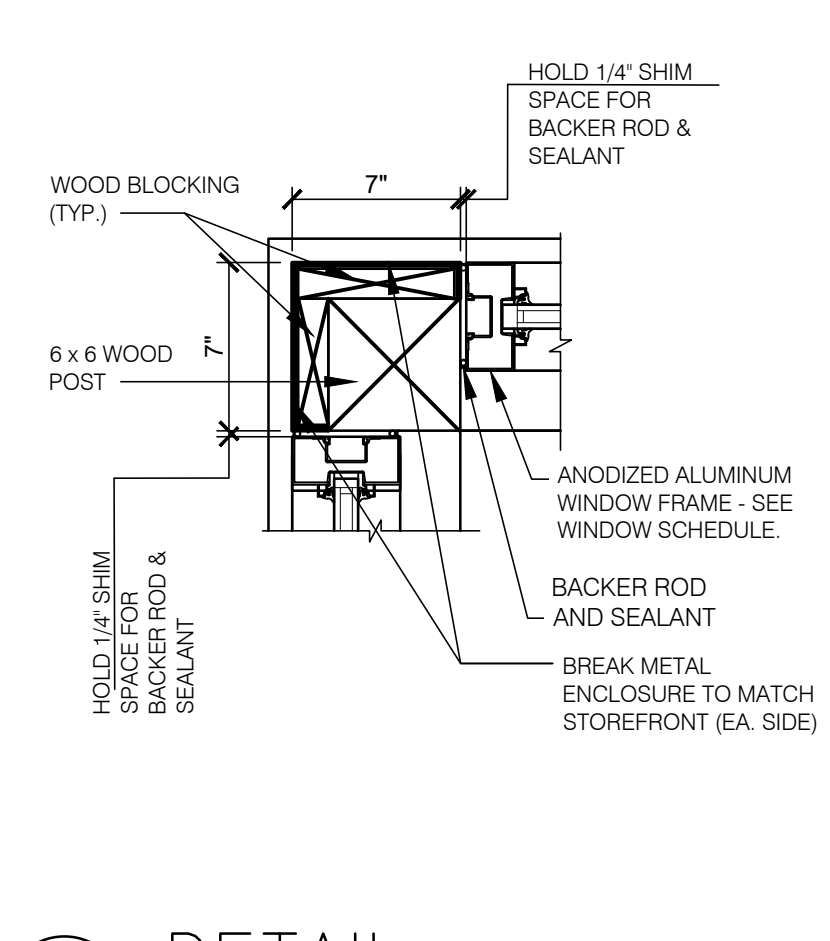
7 A601 SCALE: 1-1/2" = 1'-0"



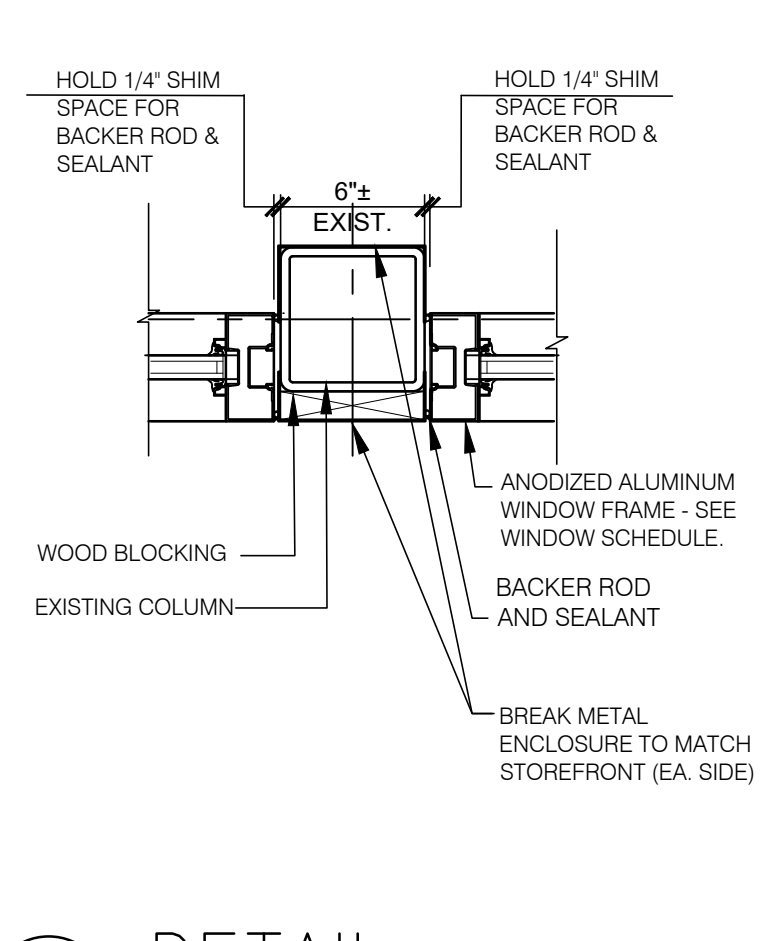
8 A601 SCALE: 1-1/2" = 1'-0"



9 A601 SCALE: 1-1/2" = 1'-0"



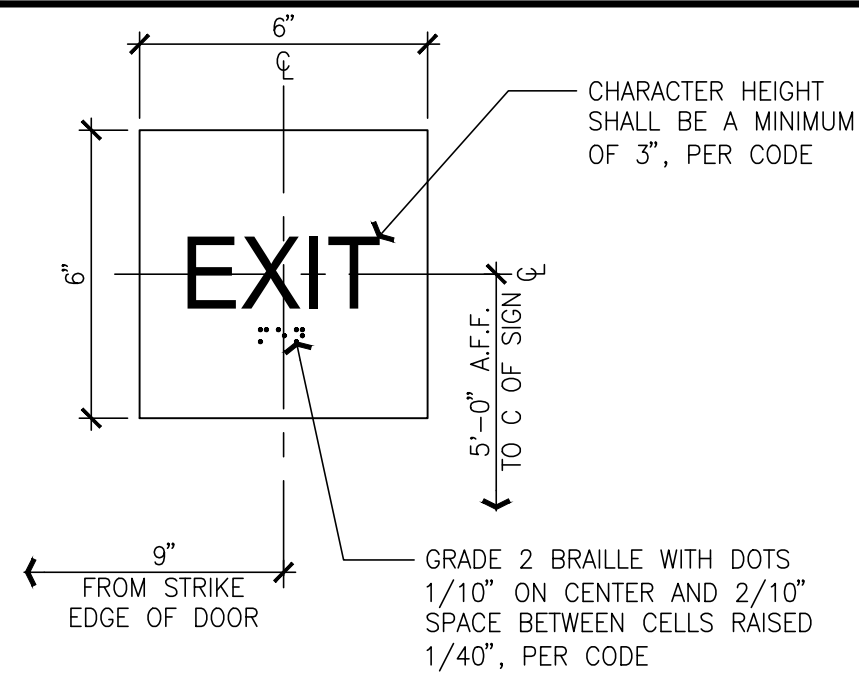
10 A601 SCALE: 1-1/2" = 1'-0"



11 A601 SCALE: 1-1/2" = 1'-0"



12 A601 SCALE: 1-1/2" = 1'-0"



1 A601 SCALE: 3" = 1'-0"

- TACTILE EXIT SIGNS SHALL BE INSTALLED AT:
1. EACH GRADE LEVEL EXIT.
  2. EACH EXIT ACCESS DOOR FROM AN INTERIOR ROOM THAT LEADS TO A CORRIDOR OR HALLWAY AND IS DESIGNATED AS AN "EXIT ROUTE".
  3. EACH EXIT DOOR THROUGH A HORIZONTAL EXIT SHALL BE DESIGNATED WITH THE WORDS "TO EXIT".
  4. SIGNS TO BE INSTALLED ON THE LATCH SIDE OF THE DOOR, OR IF PROVIDED AT DOUBLE DOORS, INSTALL ON THE RIGHT. WHERE NO WALL SPACE IS AVAILABLE, SIGNS SHALL BE LOCATED ON THE NEAREST ADJACENT WALL.

- EXIT SIGNS SHALL MEET THE FOLLOWING CRITERIA:
1. CHARACTERS SHALL BE UPPERCASE.
  2. CHARACTERS AND THEIR BACKGROUND SHALL HAVE A NON-GLARE FINISH. CHARACTERS SHALL CONTRAST WITH THEIR BACKGROUND.
  3. SIGNS SHALL CONFORM TO ANSI OR LOCAL ACCESSIBILITY GUIDELINES WHICHEVER IS MORE STRINGENT.