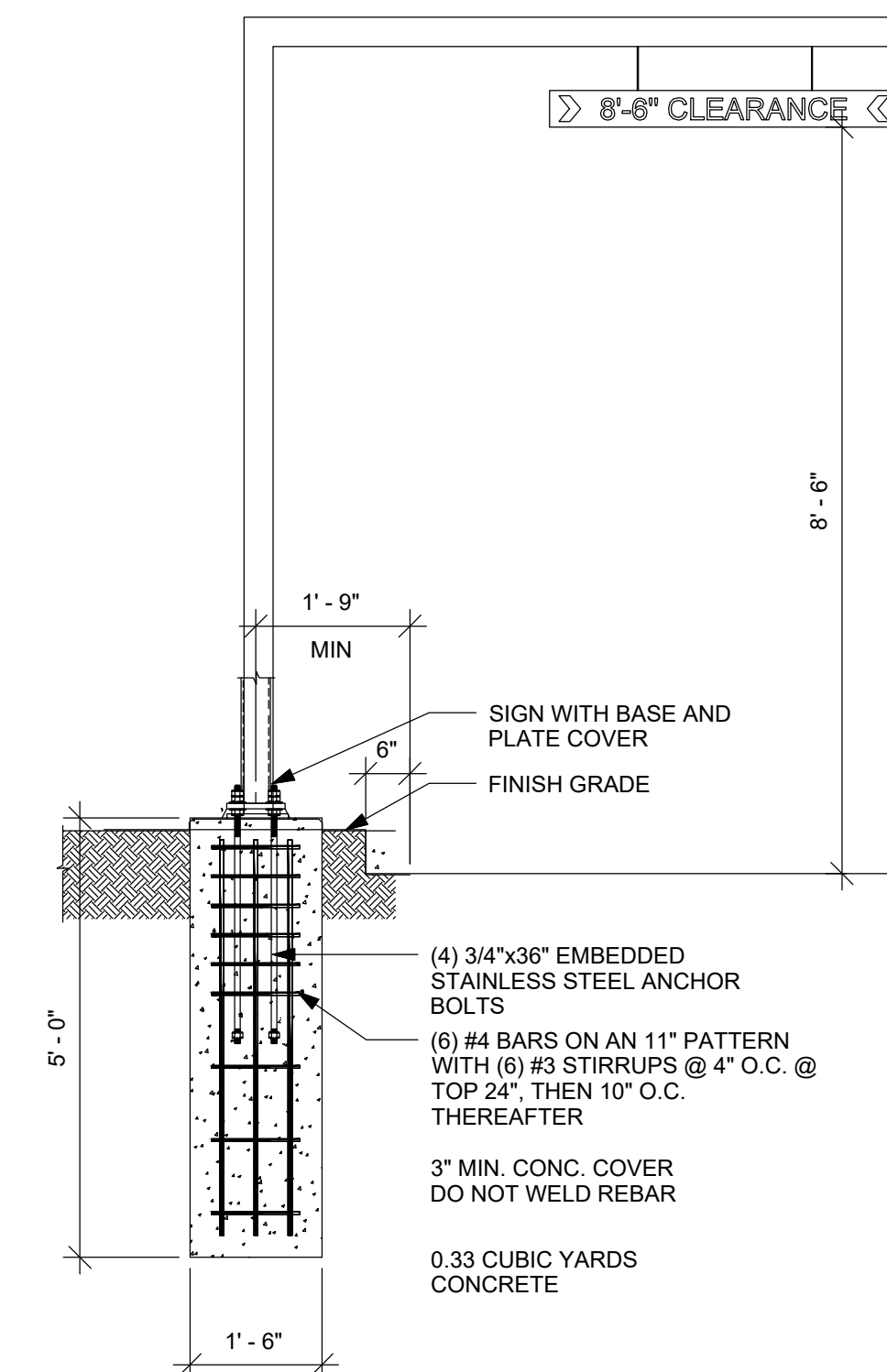
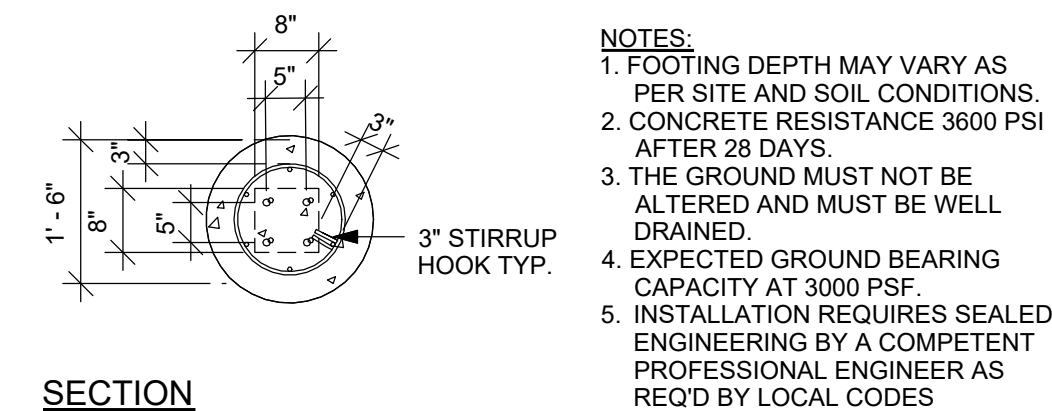
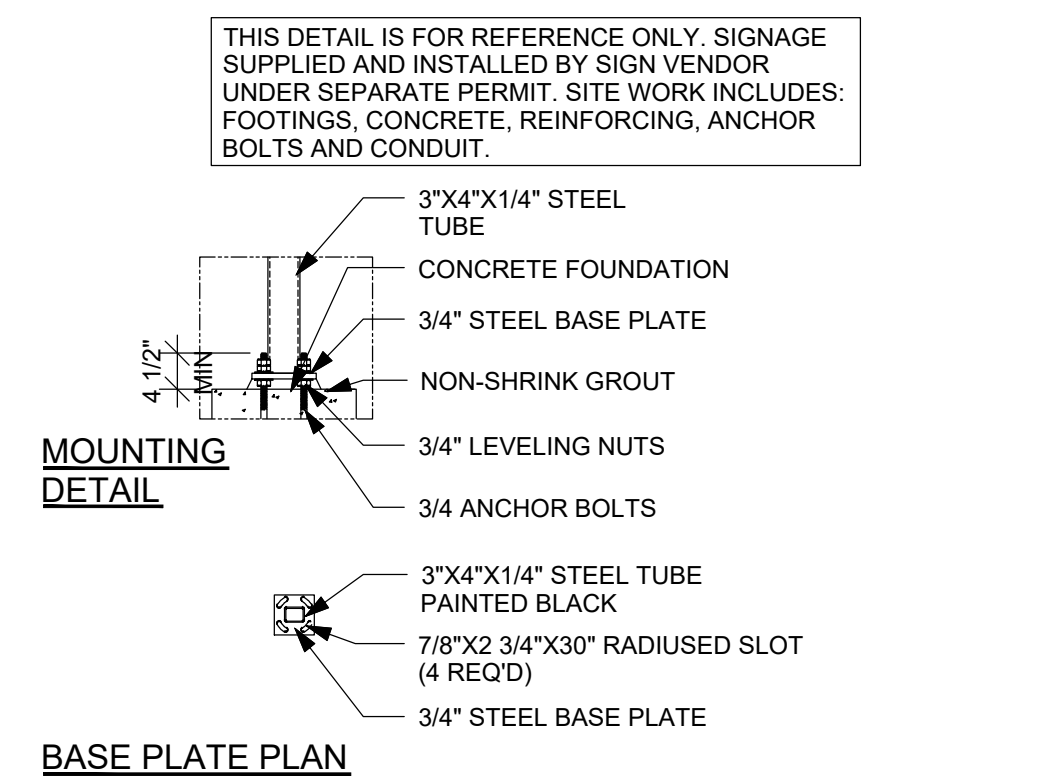
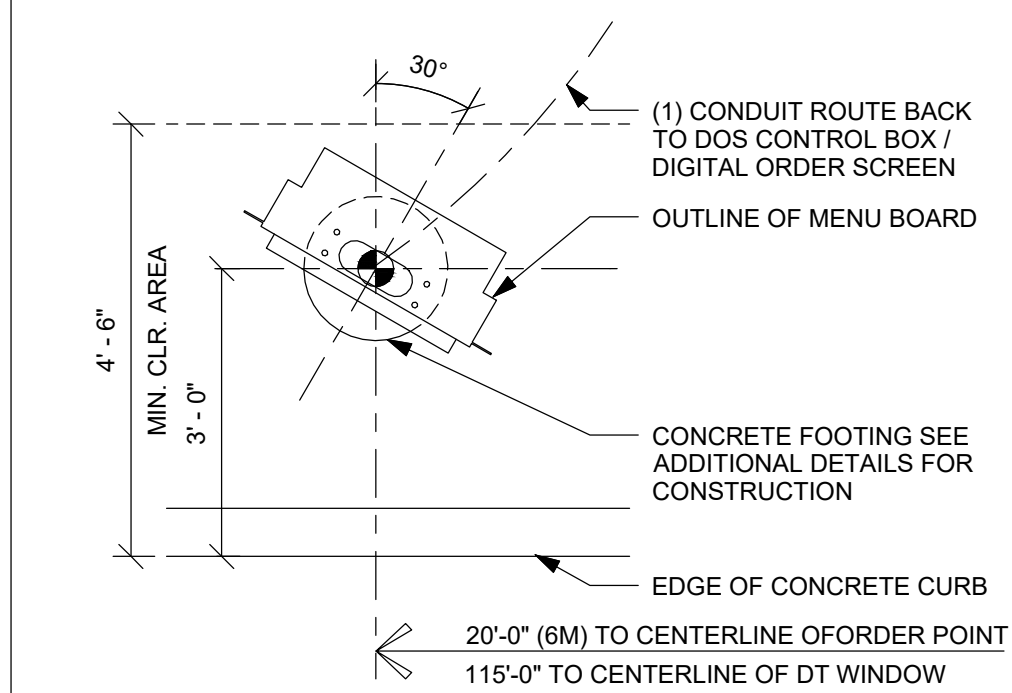


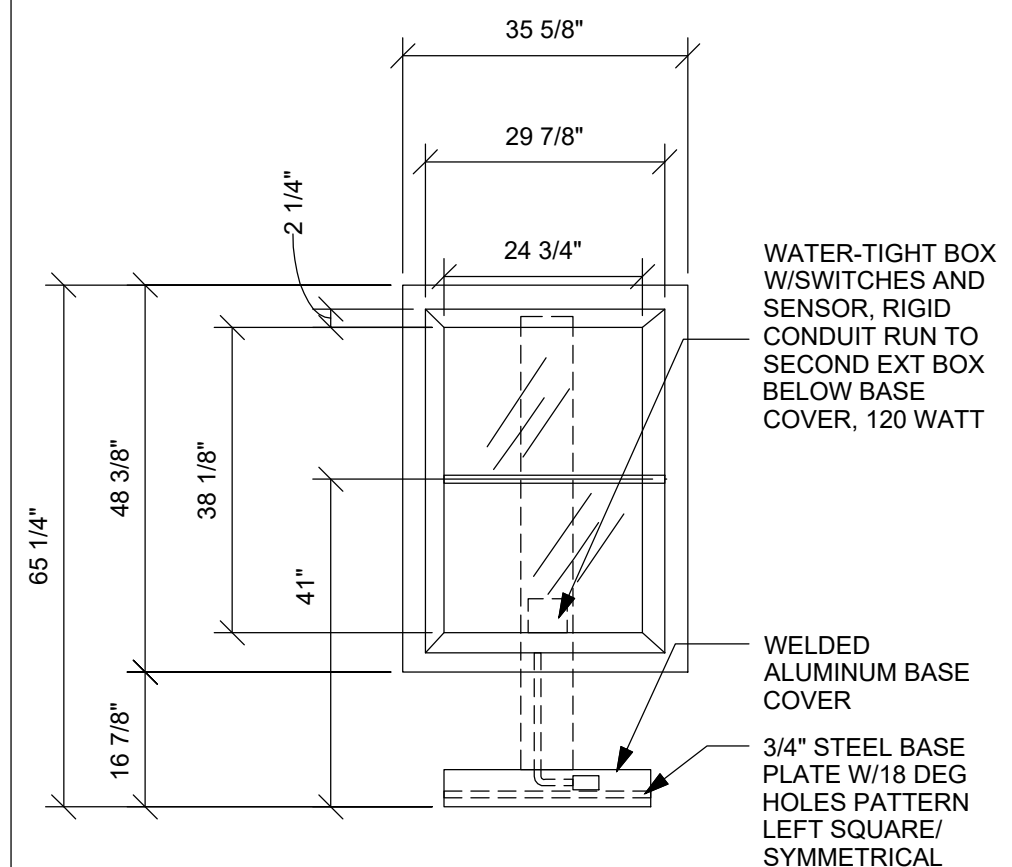
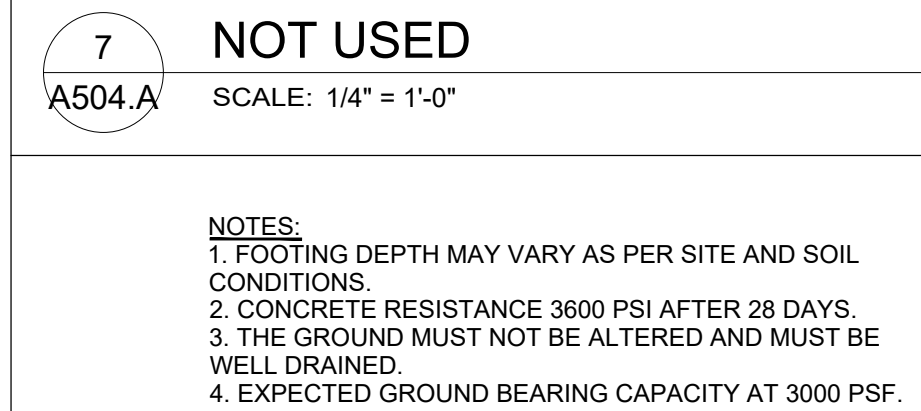
1 NOT USED  
A504.A SCALE: NOT TO SCALE



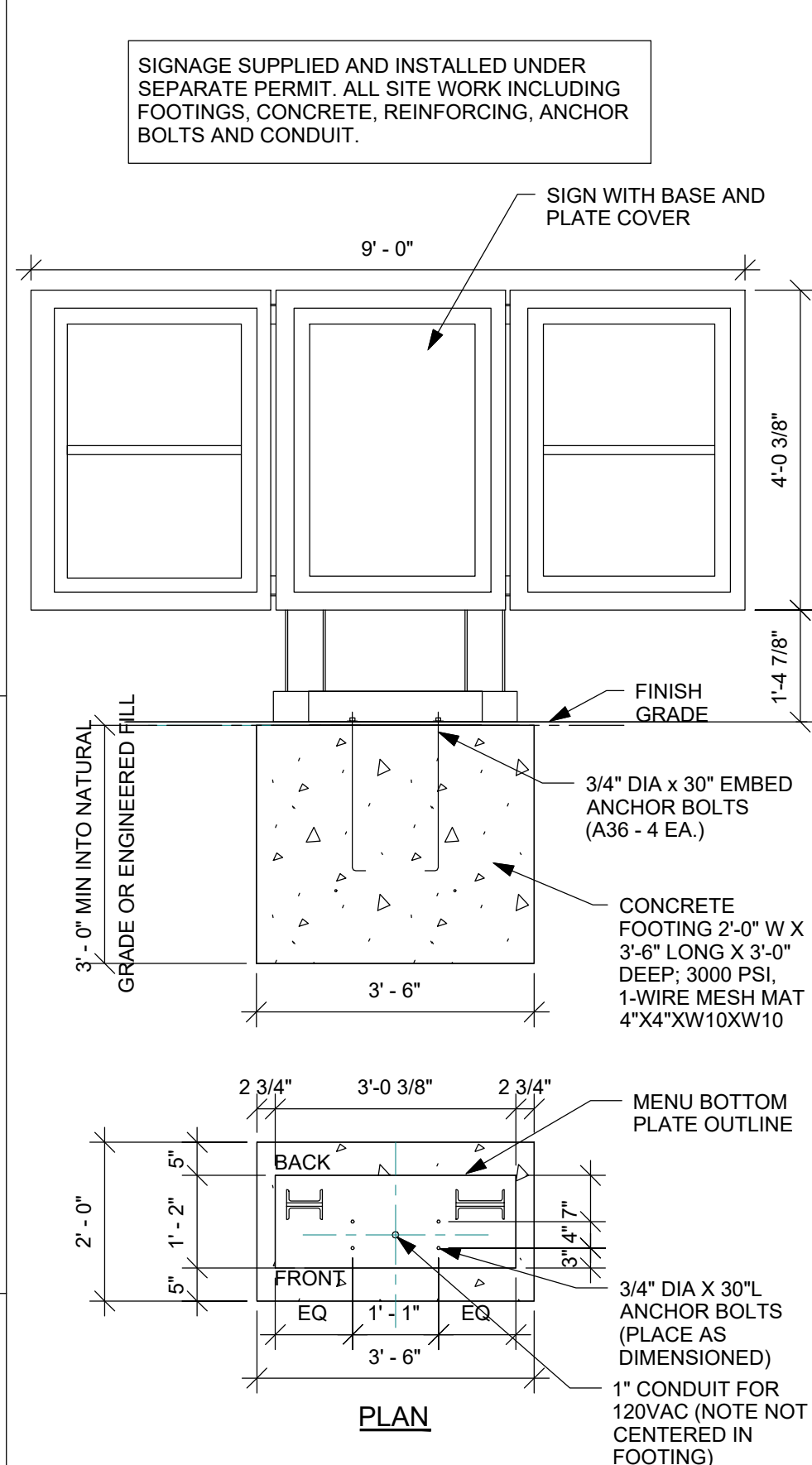
6 DTE - CLEARANCE BAR FOOTING  
A504.A SCALE: 1/2" = 1'-0"



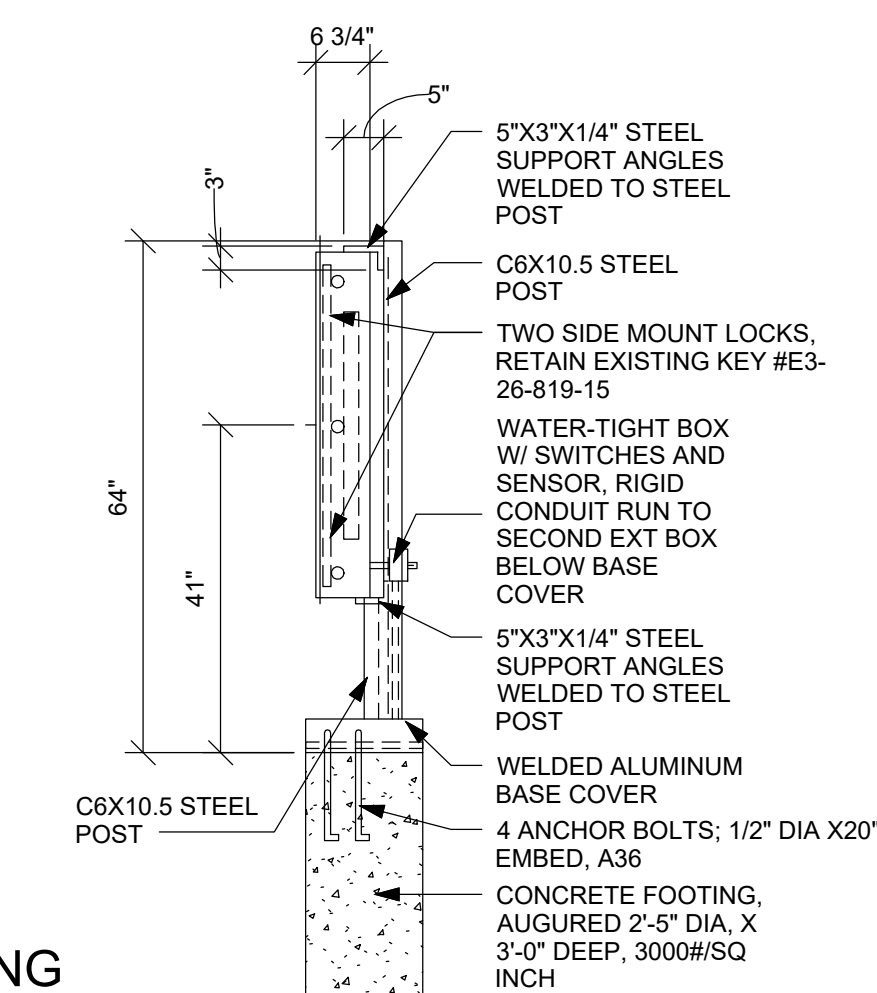
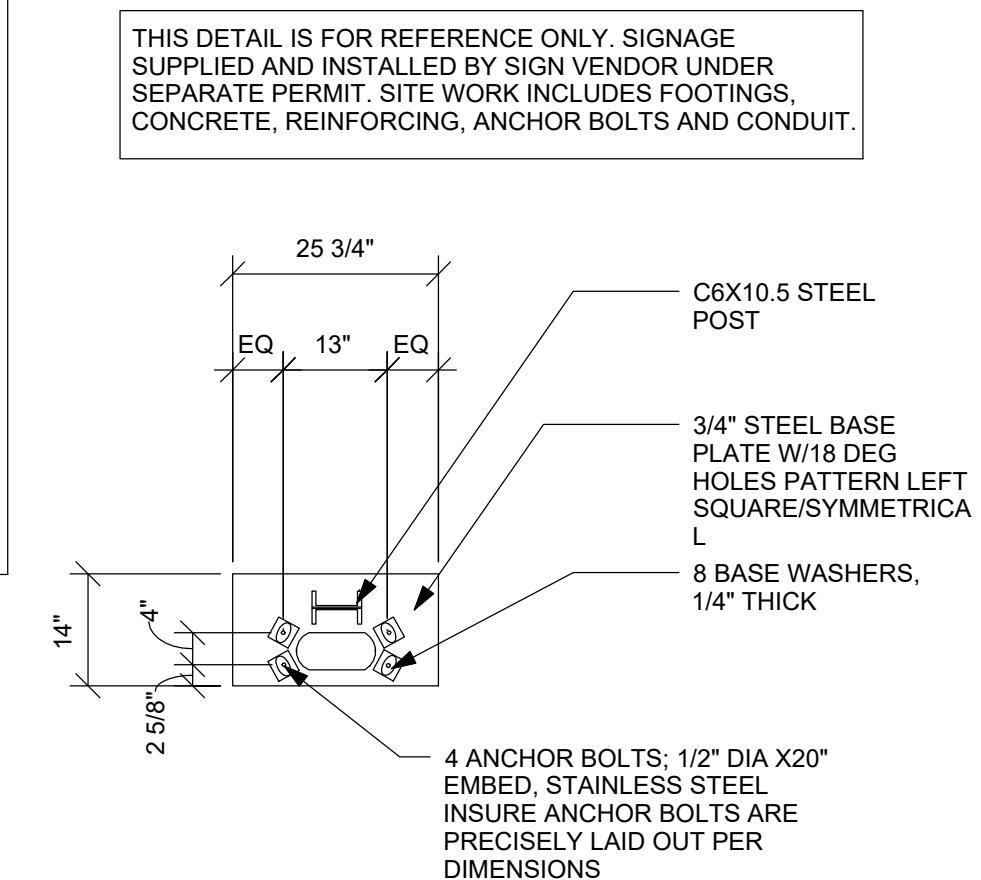
2 DTE - PRE-MENU 30 DEG  
A504.A SCALE: 1/2" = 1'-0"



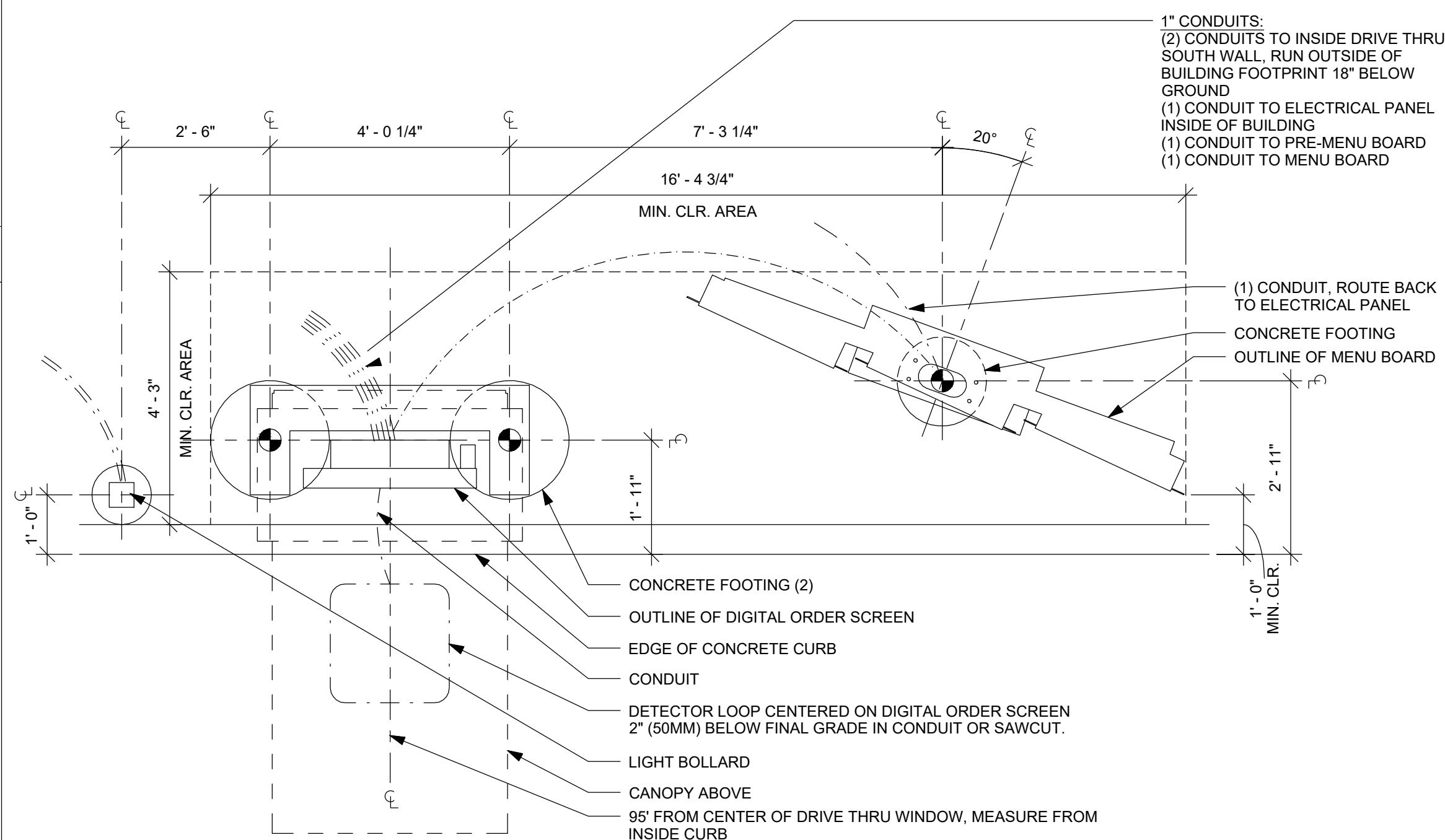
8 DTE - PRE-MENU FREESTANDING  
A504.A SCALE: 1/2" = 1'-0"



4 DTE - MENU 5 PANEL FREESTANDING  
A504.A SCALE: 1/2" = 1'-0"



5 NOT USED  
A504.A SCALE: 1/2" = 1'-0"



9 DTE - 5 PANEL 20° DT MENU BOARD, DIGITAL ORDER SCREEN WITH CANOPY  
A504.A SCALE: 1/2" = 1'-0"

**NOTES:**

- COORDINATE TENANT'S FOUNDATIONS AND ANCHOR BOLTS WITH TENANT'S CONSTRUCTION MANAGER FOR ALL DRIVE-THROUGH EQUIPMENT (BAY LARDS, CONDUITS, AND THEIR FOUNDATIONS INSTALLED BY MIDLAND GC).
- ALL CONDUITS ARE REQUIRED BY MIDLAND GC.
- COORDINATE TENANT'S FOUNDATION AND ANCHOR BOLTS WITH TENANT'S CONSTRUCTION MANAGER. TABITHA SHERMAN 469-600-7865 AND MIDLAND CONSTRUCTION DIRECTOR

CONSTR. DOC. & REVISIONS		
No.	Description	Date
-	Owner Review	05/12/20
-		-
1	ADD 1	03/09/20
-		-
-		-
-		-
-		-
-		-

