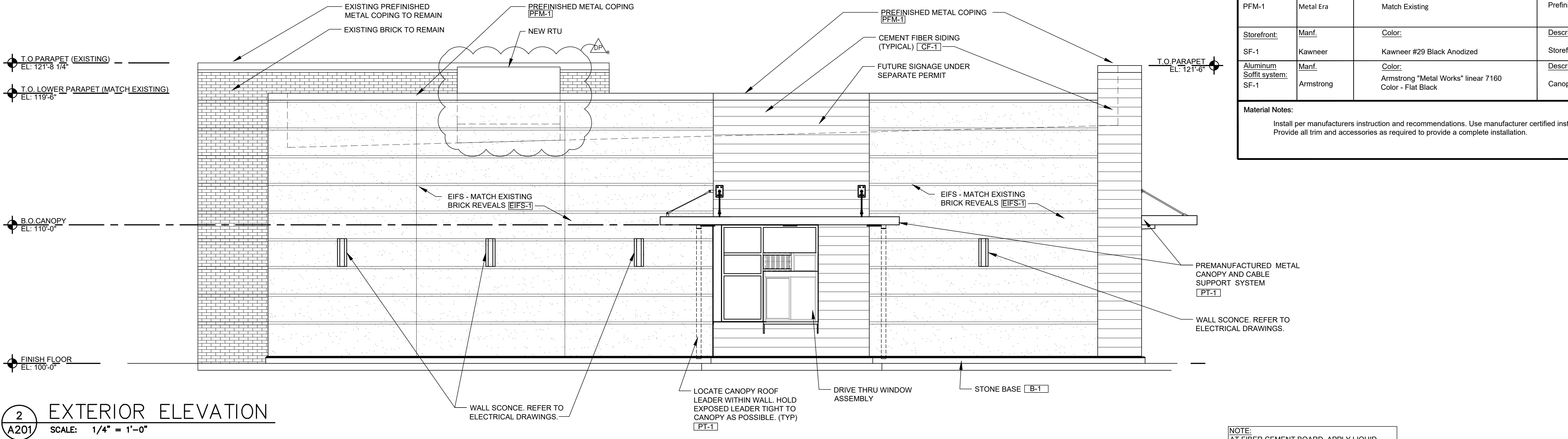
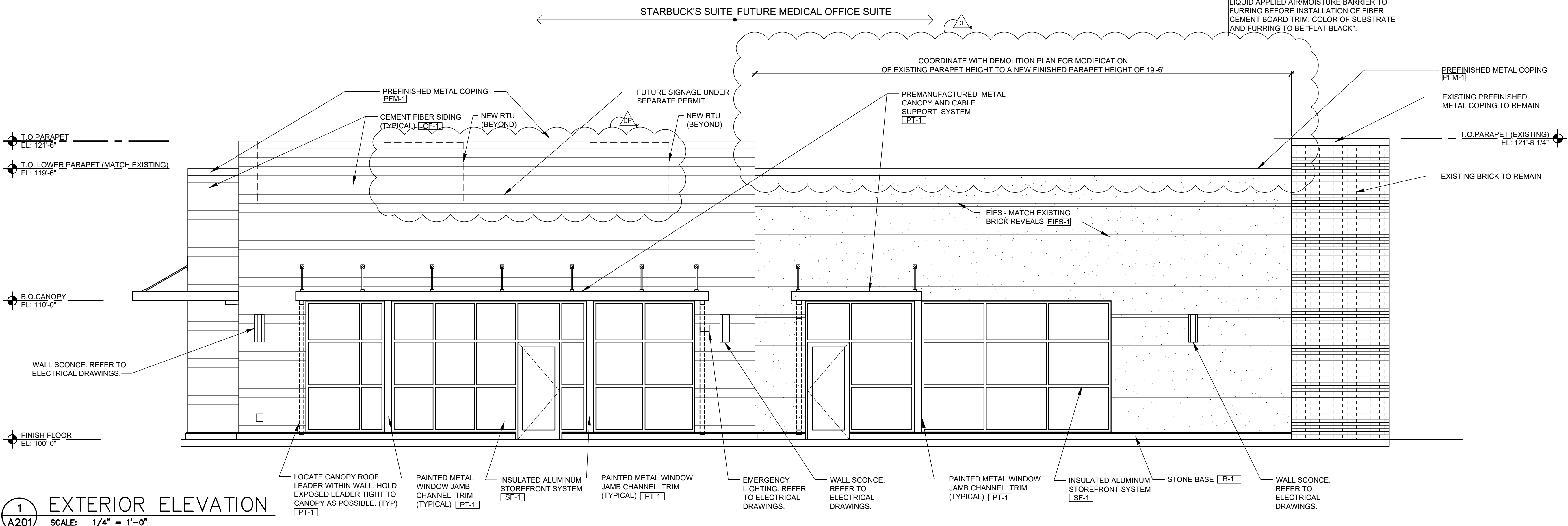


Material Legend			
Precast base: B-1	Manf.	Color: Match Cement fiber finish CF-1	Description: Base
Cement fiber siding: CF-1	Manf. Nichiha	Color: Siding: Composite wall panel Vintagewood - Redwood	Description: Front and (Street) End Wall Refer To Notes
E.I.F.S.: EIFS-1	Manf. StoCorp	Color: StoTherm Essence - Sto 32121 48 - C2 Standard Medium Finish	Description: Main Field
Paint: PT-1 PT-2	Manf. Sherwin Williams Sherwin Williams	Color: Black Galv. Metal Painted Match Adjacent finish	Description: Canopy Curb and H.M. Door
Metal: PFM-1	Manf. Metal Era	Color: Match Existing	Description: Prefinished For Metal Coping
Storefront: SF-1	Manf. Kawneer	Color: Kawneer #29 Black Anodized	Description: Storefront Framing
Aluminum Soffit system: SF-1	Manf. Armstrong	Color: Armstrong "Metal Works" linear 7160 Color - Flat Black	Description: Canopy soffit panels
Material Notes: Install per manufacturers instruction and recommendations. Use manufacturer certified installer. Provide all trim and accessories as required to provide a complete installation.			



2 EXTERIOR ELEVATION
A201 SCALE: 1/4" = 1'-0"



1 EXTERIOR ELEVATION
A201 SCALE: 1/4" = 1'-0"

CONSTR. DOC. & REVISIONS

No.	Description	Date
Owner Review	05/12/20	
Final Development Plan	05/27/20	
Owner Review 2	06/04/20	
DEVELOPMENT PLAN RESPONSE	06/17/20	
DP		

CASCO DIVERSIFIED CORPORATION
ARCHITECTURAL
CERTIFICATE OF AUTHORITY
#000329 12/31/21

STATE OF MISSOURI
KEYMA L. BULLOCK
NUMBER A-200401#669
ARCHITECT

PROFESSIONAL OF RECORD
BULLOCK, KEYMA L.
License NO. 2004011669
Expiration Date 12/31/20

Drawn By/Checked By: RMT/MSD
Project Number 320488
Permit Date 06-17-20