



Plotted: 5/29/2020 9:28 AM (nhaque) File: 01_a2276 t1.1_title sheet.dwg

PERMIT SET: 2020_04_13

GENERAL NOTES

- SEE REFLECTED CEILING PLAN FOR SOFFIT AND LIGHTING INFORMATION.
- NOTIFY ARCHITECT IMMEDIATELY OF ANY INCONSISTENCIES OR DISCREPANCIES WITH PLANS IN RELATION TO EXISTING FIELD CONDITIONS.
- WRITTEN DIMENSIONS TAKE PRECEDENCE OVER SCALE ON THE CONSTRUCTION DOCUMENTS. DO NOT EVER SCALE DRAWINGS.
- DIMENSIONS ARE FROM THE FACE OF FINISHED WALL (GWB) TO FACE OF FINISHED WALL (GWB), UNLESS OTHERWISE NOTED ON PLANS.
- ALL MANUFACTURED ARTICLES, MATERIALS AND EQUIPMENT SHALL BE APPLIED, INSTALLED, CONNECTED, ERECTED, CLEANED AND CONDITIONED IN ACCORDANCE WITH THE MANUFACTURER'S WRITTEN SPECIFICATIONS AND/OR INSTRUCTIONS.
- ALL WORK SHALL BE EXECUTED IN A MANNER ACCEPTABLE TO THE ARCHITECT, OWNER, AND LANDLORD UNLESS NOTED OTHERWISE. THE GENERAL CONTRACTOR SHALL PROVIDE AND PAY ALL LABOR, MATERIALS EQUIPMENTS, TOOLS, CONSTRUCTION EQUIPMENT, MACHINERY, TRANSPORTATION AND OTHER SERVICES AND FACILITIES NECESSARY FOR PROPER AND TIMELY EXECUTION OF WORK.
- THE CONTRACTOR WARRANT TO THE OWNER AND TO THE ARCHITECT THAT ALL MATERIALS AND EQUIPMENT FURNISHED UNDER THE CONTRACT ARE NEW UNLESS OTHERWISE SPECIFIED, AND THAT ALL WORKS SHALL BE AS SPECIFIED AND FREE OF DEFECTS.
- ALL OUTSIDE CORNERS AT DRYWALL PARTITION AND FURRING TO HAVE METAL CORNER BEADS SPACKLE AND SMOOTH.
- PROVIDE DIAGONAL BRACING TO STRUCTURE ABOVE ALL NEW DOORS, GLAZING HEADS AND JAMBS AS REQUIRED TO MAKE ASSEMBLY RIGID.
- THE GENERAL CONTRACTOR (G.C.) IS RESPONSIBLE FOR THE FINAL CLEAN UP OF THE AREA OF WORK AND AREA AFFECTED BY CONSTRUCTION. TO INCLUDE BUT NOT LIMITED TO FLOORS, MILLWORK, FIXTURES, ETC. FOLLOWING THE INSTALLATION OF THE MILLWORK.
- THE GENERAL CONTRACTOR SHALL COORDINATE THE LOCATIONS FOR THE WALL MOUNTED TELEVISIONS AND GRAPHIC SIGNAGE TO PROVIDE BLOCKING FOR MOUNTING.
- ALL WET / PLUMBING WALLS ARE TO BE PROVIDED w/ MOISTURE RESISTANT GYPSUM BOARD. PROVIDE CEMENT BACKER BOARD WHEN TILE IS IN USED.
- ALL PLUMBING WALLS ARE TO BE 6" METAL STUD FRAMING. PROVIDE REQUIRED BLOCKING FOR WALL MOUNTED FIXTURES, GRAB BARS, SHELVING, CABINETRY, ETC.
- THERE SHALL BE NO PENETRATIONS TO A DEMISING WALL, U.O.N. IF PENETRATIONS ARE TO BE NOTED, THEN ALL PENETRATIONS INCLUDING CONDUITS, PIPES, DUCTWORK, ETC. SHALL BE UL RATED PER CURRENT CODE REQUIREMENTS.
- NO PLUMBING IS ALLOWED IN DEMISING WALLS. FURRED OUT AS REQUIRED.
- ALL (E) DEMISING WALLS FOR TENANT SEPARATION ARE NOT TO BE DISTURBED OR MODIFIED IN ANY WAY.

WALL TYPES

- (E) INTERIOR WALL TO REMAIN
- (E) EXTERIOR WALL TO REMAIN
- (E) DEMISING WALL TO REMAIN
- (N) 6" x 20GA. METAL STUDS @ 16" O.C. w/ 5/8" GYPSUM BD. ON EACH SIDE ADD ADDITIONAL 5/8" GYPSUM BOARD ON THEATER SIDE
- (N) 3 5/8" x 20GA. METAL STUDS @ 12" O.C. w/ 5/8" GYPSUM BD. ON EACH SIDE
- (N) DEMISING WALL 6" X 20GA. METAL STUDS @ 16" O.C. W/ (1) LAYER OF 5/8" TYPE 'X' GYPSUM BD. ON ADJACENT TENANT SIDE (BY OTHERS) AND (1) LAYER OF 5/8" TYPE 'X' GYP. BD. ON CYCLEBAR SIDE, FULL HEIGHT.
- (N) SOUND WALL, 3 5/8" x 20GA. METAL STUDS @ 12" O.C. w/ (2) 5/8" GYPSUM BD. ON ONE SIDE, 2 1/2" AIR GAP, AND (1) 5/8" GYPSUM BD. ON DEMISING WALL
- NOTE:
- PROVIDE 5/8" WATER AND MOLD RESISTANT GYPSUM BOARD WHERE PLUMBING WALLS OCCUR, TYP.
 - PROVIDE 5/8" TYPE "X" GYP. BOARD WHERE DEMISING WALLS OCCUR, TYP.
 - ALL WALLS TO RECEIVE 5/8" GYP. BOARD, (U.N.O.).

LEGEND

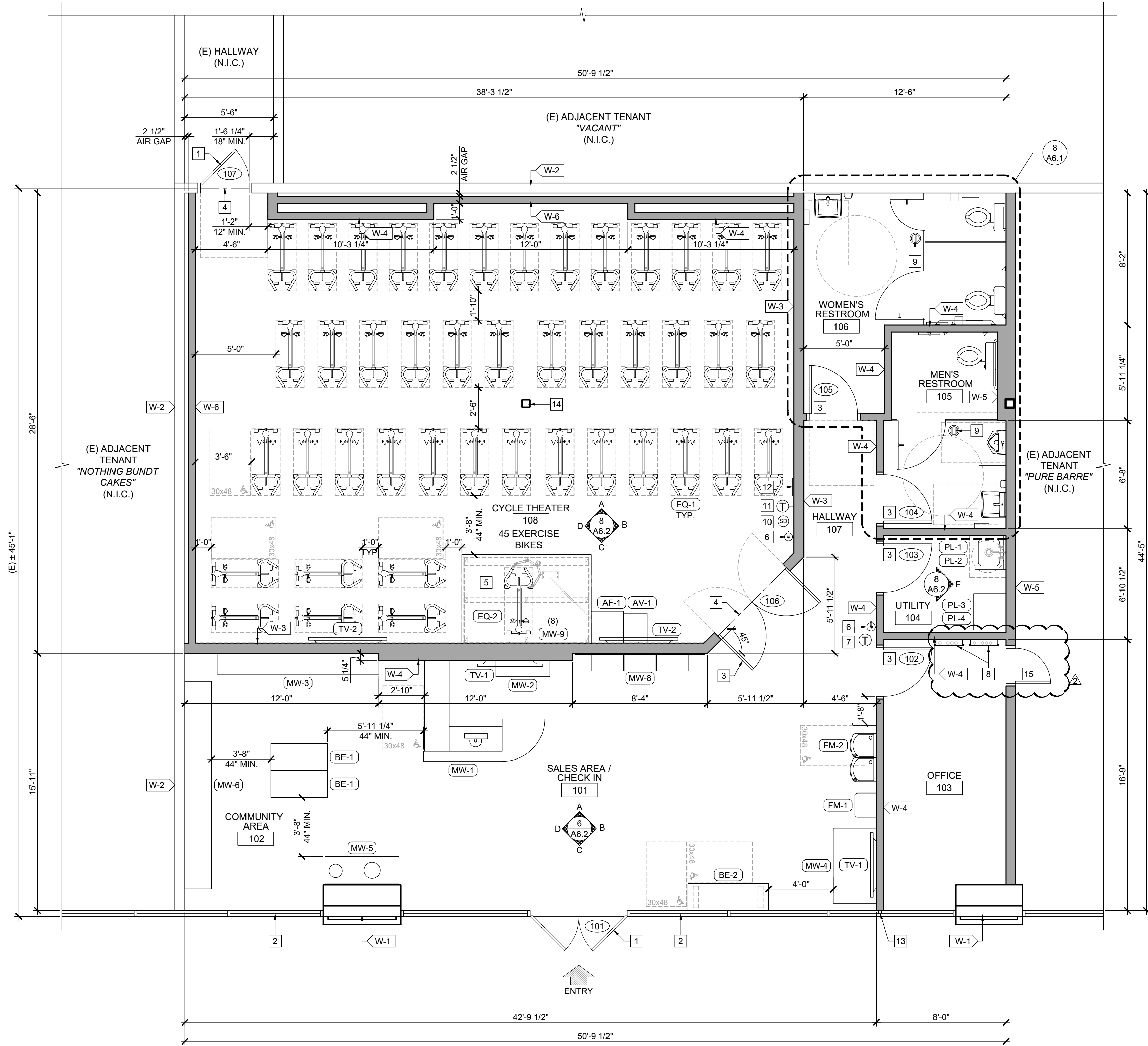
- 1 DAY PROGRAMMABLE THERMOSTAT, MOUNT T-STAT AT 48" A.F.F., SENSOR AT 96" A.F.F.
- FIRE EXTINGUISHER UNIT. MOUNT HANDLE AT 48" A.F.F. MAX.
- ELECTRICAL PANEL
- SEE DOOR SCHEDULE ON SHEET A8.1
- REMOTE DETECTOR TEST STATION, MOUNTED 84" A.F.F. ABOVE T-STAT

EQUIPMENT LIST

REF	QT	DESCRIPTION
AF-1	1	SUBWOOFER TBD
AV-1	1	AV EQUIPMENT TBD
BE-1	2	SEATING BENCH 60" L x 20" W x 17" H MOVABLE
BE-2	1	ADA SEATING BENCH 60" L x 20" W x 17" H FLOOR MOUNTED
EQ-1	45	EXERCISE BIKE
EQ-2	1	INSTRUCTION STATION ACCESSORY
MW-1	1	FRONT DESK CUT SHEET 1 ON SHEET A8.4
MW-2	1	CABINET CUT SHEET 2 ON SHEET A8.4
MW-3	1	SHOE CUBBY CUT SHEET 3 ON SHEET A8.4
MW-4	1	REFRIGERATION STATION CUT SHEET 4 ON SHEET A8.4
MW-5	1	TOWEL BOX CUT SHEET 5 ON SHEET A8.4
MW-6	1	LOCKER CABINET CUT SHEET 6 ON SHEET A8.4
MW-7	-	
MW-8	1	SLAT WALL 96" L x 96" H
MW-9	8	MIRROR 48" x 72" H PER PIECE
PL-1	1	MOP BASIN w/ BACKFLOW PREVENTER TBD
PL-2	1	ELEC. TANK WATER HEATER 30 GALLON SEE DETAIL 9/A8.4
PL-3	1	WASHER 4.5 CU. FT. CAPACITY STACKED
PL-4	1	DRYER 7.3 CU. FT. STACKED
TV-1	2	48" TV TBD
TV-2	2	65" TV TBD
FM-1	1	ADA COMPLIANT WATER DISPENSER SEE DETAIL 12/A8.1
FM-2	1	HIGH LOW DRINKING FOUNTAIN TBD SEE DETAIL 4/T1.3

KEYNOTES

- (E) DOOR TO REMAIN. SEE DOOR AND HARDWARE NOTES
- (E) FIXED STOREFRONT WINDOW TO REMAIN
- (N) DOOR AND FRAME. SEE DOOR SCHEDULE
- (N) TRANSITION STRIP. SEE FINISH SCHEDULE
- (N) TRAINER'S PLATFORM. ALL FRAMING MUST RUN PARALLEL TO WALL TO RUN ELECTRICAL TO INSTRUCTION STATION
- (N) WALL-MOUNTED FIRE EXTINGUISHER UNIT. MOUNT HANDLE AT +4'-0" AFF. MAX.
- PROVIDE (N) THERMOSTAT @ +4'-0" MAX. A.F.F.
- (N) ELECTRICAL PANEL. SEE ELECTRICAL DRAWINGS
- (N) FLOOR DRAIN. SEE PLUMBING DRAWINGS
- PROVIDE REMOTE DETECTOR TEST STATION, MOUNTED 84" A.F.F. ABOVE T-STAT
- PROVIDE 1-DAY PROGRAMMABLE THERMOSTAT AND SENSOR. MOUNT T-STAT @ 48" AFF. SENSOR @ 96" HIGH
- PROVIDE (N) OCCUPANCY SIGNAGE PER
- ADD (N) MULL-IT-OVER TRIM CLOSURE PIECES AT END WALL PLATE, OR EQUAL.
- (E) STRUCTURAL COLUMN TO REMAIN
- (N) DOOR UNDER SEPARATE SUBMITTAL.



(N) FLOOR PLAN AND EQUIPMENT PLAN

SCALE
1/4" = 1'-0"

8

Amor

Architectural
Corporation

9483 HAVEN AVENUE, SUITE 100
RANCHO CUCAMONGA, CA 91730
P. 909.259.9971 | F. 909.944.8409
www.AmorArch.com
WEST COAST | CENTRAL | EAST COAST

CLIENT



CYCLEBAR

910 W NORTHWEST BLUE PARKWAY,
LEE'S SUMMIT, MO 64086
PHONE: 720.378.3062
rachel.hilton@cyclebar.com

CONSULTANT

CYCLEBAR
INTERIOR TENANT IMPROVEMENT

910 W NORTHWEST BLUE PARKWAY,
LEE'S SUMMIT, MO 64086

(N) FLOOR PLAN
AND EQUIPMENT PLAN

PROJECT
LOCATION

SHEET TITLE

STAMP



DATE SIGNED: 2020-05-29
RENEWAL DATE: 2020-12-31
SHEETS BEARING THIS SEAL AND NET SIGNATURE
ARE AUTHENTICATED. RESPONSIBILITY FOR ALL
OLDER PLANS, SPECIFICATIONS OR INSTRUMENTS
ARE DISCLAIMED.

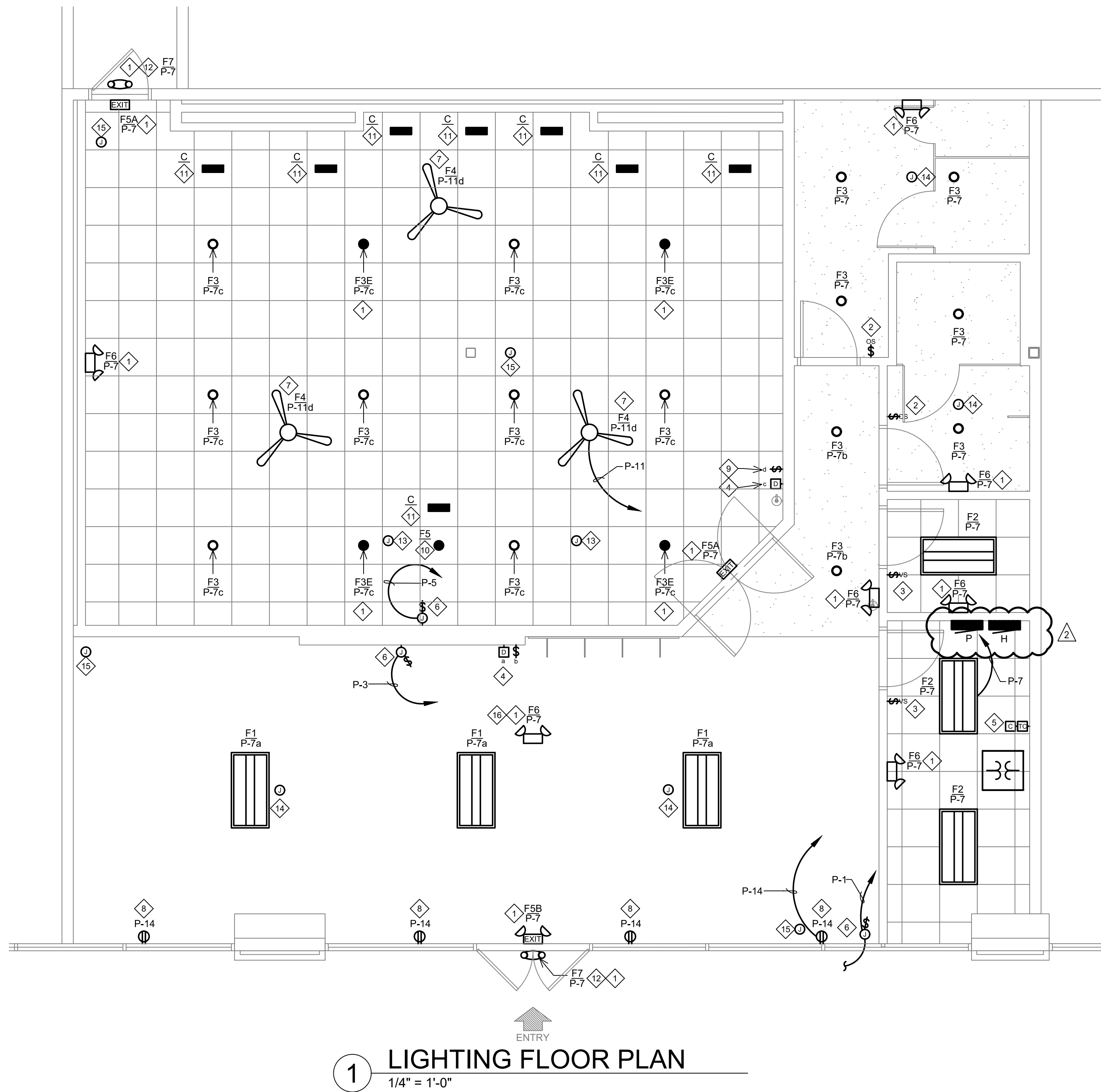
REVISIONS

- 2020-05-26 FIELD COORDINATION

DATE
2020.05.29
PROJECT NUMBER
A2276

SHEET NUMBER

A1.1

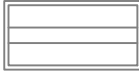


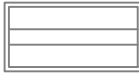









1 LIGHTING FLOOR PLAN
1/4" = 1'-0"

- GENERAL NOTES:
- A. REFER TO ARCHITECTURAL REFLECTED CEILING PLAN FOR EXACT LOCATIONS OF LUMINAIRES.
 - B. EACH LUMINAIRE SHALL BE STRUCTURALLY SUPPORTED; DO NOT USE CONDUIT FOR SUPPORT FOR EITHER FIXTURES OR BOXES.
 - C. USE FLEXIBLE METAL CONDUIT (GREENFIELD) FOR CONNECTION OF LAY-IN FIXTURES.
 - D. PROVIDE GROUND CONDUCTOR IN ALL CONDUIT RUNS.
 - E. THOUGH WIRING OF FIXTURES SHALL NOT BE PERMITTED UNLESS SPECIFICALLY ILLUSTRATED.
 - F. EACH LUMINAIRE SHALL HAVE ITS OWN BOX UNLESS OTHERWISE ILLUSTRATED.
 - G. VERIFY LOCATION OF WALL MOUNTED EMERGENCY LUMINAIRES TO AVOID CONFLICT WITH WOOD TRIM
 - H. REFER TO ARCHITECTURAL FOR EXACT LOCATION OF LUMINAIRES COORDINATE WITH ARCHITECT FOR LOCATION OF LUMINAIRES AND DEVICES BEFORE ROUGH-IN.

- KEY NOTES:
- 1 PROVIDE UNSWITCHED HOT TO ALL EXIT, EMERGENCY, AND NIGHT LIGHTS TO BYPASS SWITCH CONTROLS. THIS MUST BE IN ADDITION TO SWITCHED HOT.
 - 2 PROVIDE LUTRON MAESTRO WALL MOUNTED OCCUPANCY SENSOR MS-A102-O. INSTALL PER MANUFACTURER'S INSTALLATION GUIDE.
 - 3 PROVIDE LUTRON MAESTRO WALL MOUNTED VACANCY SENSOR MS-A102-V. INSTALL PER MANUFACTURER'S INSTALLATION GUIDE.
 - 4 PROVIDE LUTRON DIVA 0-10V DIMMER DVTV-WH WITH POWER PACK PP-DV.
 - 5 PROVIDE 2 CHANNEL INTERMATIC ASTRONOMIC TIME CLOCK MODEL NO. ET8215C WITH 0-2 HOUR SPRING WOUND TIMER AND 4 POLE LIGHTING CONTACTOR. CONNECT SIGN, INTERIOR LIGHTING AND SHOW WINDOW RECEPTACLES.
 - 6 PROVIDE JUNCTION BOX WITH DISCONNECT SWITCH IN CONCEALED LOCATION FOR CONNECTION TO SIGN LIGHTING. LOCATE DISCONNECT SWITCH IN CONCEALED ACCESSIBLE LOCATION PER NEC 600.6. E.C. SHALL MAKE FINAL CONNECTION TO SIGN AND CONTROL VIA TIME CLOCK. COORDINATE WITH SIGN VENDOR PRIOR TO ROUGH-IN.
 - 7 PROVIDE FAN RATED JUNCTION BOX AND SEISMIC APPROVED HARDWARE ON ROOF TRUSSES.
 - 8 PROVIDE SHOW WINDOW RECEPTACLE WITHIN 18" OF THE TOP OF THE WINDOW PER NEC 210.62.
 - 9 PROVIDE ENVIROFAN SPEED CONTROL MODEL NO. 105FR FOR CONTROL OF CEILING FANS.
 - 10 NEW RECESSED 3 WATT LED DOWNLIGHT PROVIDED AND INSTALLED BY OTHERS. CONNECTED AND CONTROLLED VIA A/V SYSTEM.
 - 11 NEW RECESSED 3 WATT LED WALL WASH PROVIDED AND INSTALLED BY OTHERS. CONNECTED AND CONTROLLED VIA A/V SYSTEM.
 - 12 VERIFY IF THERE IS ADEQUATE GENERAL & EMERGENCY LIGHTING PRESENT. IF NOT COORDINATE WITH LANDLORD AND PROVIDE NEW.
 - 13 PROVIDE JUNCTION BOX MOUNTED TO UNISTRUT WITH SPEAKER CABLE FROM EACH SPEAKER LOCATION BACK TO A/V RACK WITH A 15' WHIP AT THE A/V RACK. COORDINATE EXACT LOCATION OF SPEAKERS WITH A/V VENDOR PRIOR TO ROUGH-IN. SEE SHEET E3.0 FOR A/V RACK LOCATION.
 - 14 PROVIDE JUNCTION BOX FOR SURFACE/PENDANT MOUNTED SPEAKER WITH SPEAKER CABLE FROM EACH SPEAKER LOCATION BACK TO A/V RACK. PROVIDE A 15' WHIP AT THE A/V RACK. SEE SHEET E3.0 FOR A/V RACK LOCATION.
 - 15 PROVIDE (1) CAT6 PLENUM RATED CABLE FOR EACH CAMERA LOCATION. THE CABLE SHALL RUN FROM EACH CAMERA BACK TO THE A/V RACK WITH A 15' WHIP LEFT AT EACH CAMERA LOCATION AND A 15' WHIP PROTRUDING FROM THE A/V CUT IN RING AT THE PLATFORM.
 - 16 PENDANT MOUNT FIXTURE AT 11'0" A.F.F.

LIGHTING SCHEDULE

LIGHTING SCHEDULE																																																													
ARCHITECTURAL FIXTURE TYPES - CYCLEBLAR PROTOTYPE																																																													
FIXTURE DESIGNATION							SYMBOL							DESCRIPTION							WATTS		VOLTAGE		MANUFACTURER		MODEL #		REMARKS		FIXTURE DESIGNATION							SYMBOL							DESCRIPTION							WATTS		VOLTAGE		MANUFACTURER		MODEL #		REMARKS	
F1		SUSPENDED 2'X4' LED PANEL LIGHT, DIRECT/INDIRECT					50W	120V	KONLITE	KK-PS-24DW-50-LFSZ		SUSPENSION MOUNTED AT 10' A.F.F. IN LOBBY / CHECK-IN AREA. G.C. TO PROVIDE SUSPENSION MOUNTING KIT.					F5A		EXIT, SINGL/DOUBLE, RED LETTERS, HIGH LUMEN, UNIVERSAL MOUNTED, SELF POWERED, REMOTE CAPABLE					3	DV	LITHONIA LIGHTING	LHQM-LED-R-HO RO		WALL/ CEILING MOUNT					C		6' WALL WASH - POWERED OVER ETHERNET					3W	-	PROVIDED & INSTALLED BY A/V VENDOR	PROVIDED & INSTALLED BY A/V VENDOR		PROVIDED & INSTALLED BY A/V VENDOR. POWERED VIA AV RACK.															
F2		RECESSED 2'X4' LED TROFFER					31W	120V	LITHONIA LIGHTING	2BLT4-48L-ADP-EZ1-LP840		RECESSED AT CORRIDOR.					F5B		EXIT, SINGL/DOUBLE, RED LETTERS, EMERGENCY LIGHT COMBINATION, HIGH LUMEN, UNIVERSAL MOUNTED, SELF POWERED, REMOTE CAPABLE					3	DV	LITHONIA LIGHTING	LHQM-LED-R-HO		WALL/ CEILING MOUNT					F5		6' DOWNLIGHT - POWERED OVER ETHERNET					3W	-	PROVIDED & INSTALLED BY A/V VENDOR	PROVIDED & INSTALLED BY A/V VENDOR		PROVIDED & INSTALLED BY A/V VENDOR. POWERED VIA AV RACK.															
F3		6" RECESSED LED DOWNLIGHT					12.7W	120V	LITHONIA LIGHTING	LDN6-40-20-L06-WH-LD-MVOLT-EZ1		RECESSED MOUNT IN GYP. CEILING IN RESTROOM AND UTILITY ROOM. RECESSED MOUNT IN ACT CYCLE THEATER.					F6		DOUBLE HEAD EMERGENCY UNIT					14.2	UNIV	LITHONIA LIGHTING	ELM6L EMERGENCY LIGHT		WALL/ CEILING MOUNT PROVIDE WITH 90 MINUTE BATTERY. PROVIDE WPVS ACCESSORY FOR SHOWER UNIT.																																
F3E		6" RECESSED LED DOWNLIGHT WITH EMERGENCY BATTERY PACK					12.7W	120V	LITHONIA LIGHTING	LDN6-40-20-L06-WH-LD-MVOLT-EZ1 E10WCP		RECESSED MOUNT IN GYP. CEILING IN RESTROOM AND UTILITY ROOM. RECESSED MOUNT IN ACT CYCLE THEATER					F7		DOUBLE HEAD EMERGENCY UNIT, WET LOCATION REMOTE CAPABLE					7W	120V	LITHONIA LIGHTING	WLTU MR		WALL MOUNT PROVIDE WITH 90 MINUTE BATTERY AT FRONT ENTRY ON EXTERIOR SIDE.																																
F4		56" PENDANT MOUNTED FAN WITH FAN SPEED CONTROL					N/A	120V	ENVIRONFAN	GOLD LINE 160F-7 BLK		PENDANT MOUNTED @ 10'-0" A.F.F. AT CYCLE THEATER																																																	

Amor
Architectural Corporation
9483 HAVEN AVENUE, SUITE 100
RANCHO CUCAMONGA, CA 91730
P. 909.259.9971 | F. 909.944.8409
www.AmorArch.com
WEST COAST | CENTRAL | EAST COAST

CLIENT
CYCLEBAR
910 NW BLUE PARKWAY,
LEE'S SUMMIT, MO 64086
PHONE: 720.378.3062
rachel.hilton@cyclebar.com
CONSULTANT

PROJECT LOCATION
CYCLEBAR
INTERIOR TENANT IMPROVEMENT
910-W NORTHWEST BLUE PARKWAY,
LEE'S SUMMIT, MO 64086
SHEET TITLE
FLOOR PLAN - LIGHTING

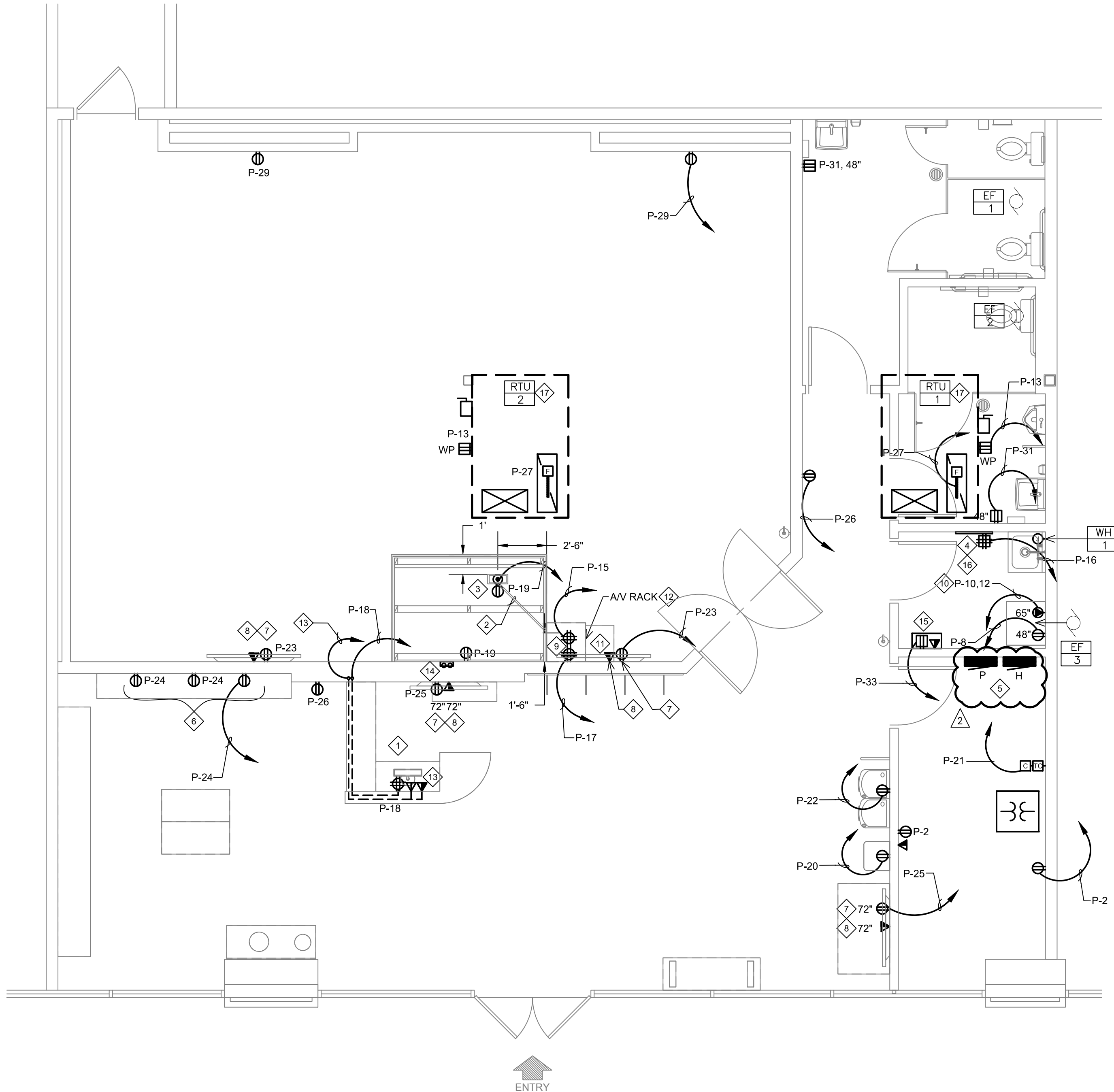
0420758-076-00

STAMP
Professional Engineer
5/28/2020

REVISIONS
2020-05-28 FIELD COORDINATION
DATE
2020.04.10
PROJECT NUMBER
A2276
SHEET NUMBER
E2.0

PERMIT SET: 2020_04_10

MECHANICAL EQUIPMENT SCHEDULE											
ITEM NO	DESCRIPTION	MCA	KW	VOLTS	PHASE	DISCONNECT	BKR	PNL-CKT	WIRE	GROUND	NOTES
RTU-1	ROOF TOP UNIT	12.0	--	480	3	30A/3P NON-FUSED	15A/3P	H-7,9,11	3/4"C. 3 #12	1#12	1,2,3,4,6
RTU-2	ROOF TOP UNIT	28.0	--	480	3	30A/3P NON-FUSED	30A/3P	H-2,4,6	3/4"C. 3#10	1#10	1,2,3,4,6
EF-1	EXHAUST FAN	--	0.137	120	1	20A/1P MOTOR RTD. SW.	20A/1P	P-7	1/2"C. 2 #12	1 #12	1,5
EF-2	EXHAUST FAN	--	0.137	120	1	20A/1P MOTOR RTD. SW.	20A/1P	P-7	1/2"C. 2 #12	1 #12	1,5
EF-3	DRYER BOOSTER FAN	--	0.083	120	1	20A/1P MOTOR RTD. SW.	20A/1P	P-35	1/2"C. 2 #12	1 #12	1
WH-1	WATER HEATER	--	6.000	480	1	LOCK OFF DEVICE	20A/2P	H-8,10	3/4"C. 2 #12	1 #12	1
MOTOR/EQUIPMENT SCHEDULE NOTE (NOT ALL NOTES MAY BE USED)											
1. VERIFY REQUIREMENTS OF EQUIPMENT.											
2. PROVIDED DUCT SMOKE DETECTOR IN MAIN RETURN DUCT. DUCT SMOKE DETECTOR TO SHUT DOWN UNIT UPON ALARM CONDITION.											
3. VERIFY NAMEPLATE RATING ON UNIT AS IT MAY DIFFER FROM LOADS SHOWN HERE.											
4. PROVIDE CONNECTION TO MECHANICAL CONTRACTOR PROVIDED CONTROLS AS REQUIRED.											
5. CONTROL VIA LIGHT SWITCH LOCATED IN ROOM. COORDINATE WITH MECHANICAL CONTRACTOR.											
6. PROVIDE GFI SERVICE RECEPTACLE WITH WEATEHRPROOF IN-USE COVER. CIRCUIT AS SHOWN.											



1 POWER FLOOR PLAN
1/4" = 1'-0"

GENERAL NOTES:

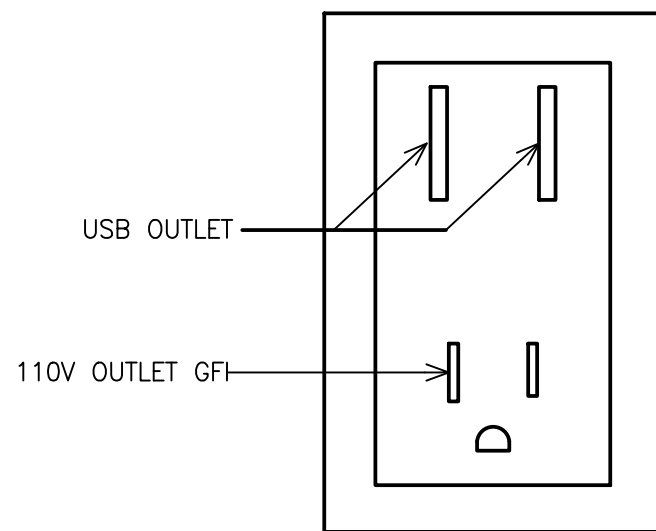
- ALL WIRING SHALL BE #12 THHN MINIMUM FOR DRY LOCATIONS.
- ALL ELECTRICAL MATERIAL, DEVICES, AND EQUIPMENT SHALL BEAR "U.L." LABELS AND SHALL BE INSTALLED PER THE "N.E.C." AND PER THE LOCAL INSPECTION BUREAU'S REQUIREMENTS. ALL MATERIAL, DEVICES, AND EQUIPMENT SHALL BE GROUNDED PER "N.E.C."
- ALL CONTRACTORS SHALL VERIFY ALL REQUIREMENTS OF EQUIPMENT PRIOR TO COMMENCING WITH THE WORK.
- COORDINATE MOUNTING HEIGHTS AND OUTLET LOCATIONS WITH TENANT PRIOR TO ROUGH-IN.
- VERIFY METHOD OF CONNECTIONS TO ALL EQUIPMENT WITH TENANT PRIOR TO ROUGH-IN.
- PROVIDE MATCHING RECEPTACLE FOR ALL EQUIPMENT SUPPLIED WITH CORD AND PLUG. INSTALL CORD & PLUG ON EQUIPMENT WHICH WAS SHIPPED SEPARATELY. FURNISH AND INSTALL CORD & PLUG ON EQUIPMENT WHICH REQUIRES CORD & PLUG.
- INTERIOR BUILDING CONDUIT RUNS SHALL BE CONCEALED AT ALL TIMES (IN WALL, COUNTER, CEILING OR FLOOR). EXTERIOR BUILDING CONDUIT RUNS SHALL BE RIGID GRC. OR EQUAL. ELECTRICAL CONTRACTOR TO FIELD VERIFY EXACT REQUIREMENTS AND TO INSURE COMPLETE ELECTRICAL INSTALLATION MEETS ALL APPLICABLE CODES AND REGULATIONS
- THIS CONTRACTOR IS RESPONSIBLE FOR PROVIDING THROUGH PENETRATION PROTECTION DEVICES AND FIRESTOPPING DEVICES AT ALL PIPES, LINE, WIRING, DUCTWORK OR OTHER COMPONENTS THIS CONTRACTOR INSTALLS WHICH PENETRATE RATED WALLS OR FLOOR/CEILING ASSEMBLIES.
- COORDINATE COLOR OF RECEPTACLES AND COVER PLATE WITH ARCHITECT, ALL COVER PLATES IN THE CYCLE STUDIO SHALL BE PAINTED BLACK.
- THIS CONTRACTOR SHALL PROVIDE AND INSTALL EQUIPMENT REQUIRED FOR TEMPORARY ELECTRIC SERVICE SUFFICIENT FOR ALL NEW CONSTRUCTION.
- ALL KITCHEN, BATH AND SINK COUNTERTOP AND EXTERIOR WEATHERPROOF OUTLETS SHALL BE G.F.I. (GROUND FAULT INTERRUPT) TYPE. ALL DEVICES MOUNTED AT COUNTERTOP LEVEL OR AS MAY OTHERWISE BE REQUIRED, SHALL BE MOUNTED IN A FASHION SO THAT THE BOTTOM OF THE DEVICE TRIM, COVER PLATE, ETC... CAN BE FASTENED CLEAR OF ANY TRIM SUCH AS BACK SPLASHES, SIDEBOARDS, ETC. ANY REQUIRED RELOCATION OF DEVICES SHALL BE AT THE EXPENSE OF THIS CONTRACTOR.
- ALL EXTERIOR WIRING SHALL BE IN RIGID CONDUIT OR SCHEDULE 40 P.V.C. CONDUITS.
- VERIFY ALL EQUIPMENT LOADS, LOCATIONS AND PANELBOARD SCHEDULES PRIOR TO ROUTING CONDUITS, PULLING WIRE AND INSTALLING BREAKERS AND ELECTRICAL DEVICES.
- CODE AND REGULATIONS COMPLY WITH STATE AND LOCAL CODES, UTILITY COMPANY REGULATIONS AND THE LATEST EDITIONS OF: THE UNIFORM CODES (BUILDING, PLUMBING AND MECHANICAL) NATIONAL FIRE CODES OF THE NATIONAL FIRE PROTECTION ASSOCIATION (NFPA). FINAL INTERPRETATIONS WILL BE MADE BY THE LOCAL INSPECTION AUTHORITY.

KEY NOTES:

- PROVIDE QUAD RECEPTACLE AND DATA WITHIN RECEPTION DESK AT 24" A.F.F. FOR P.O.S. EQUIPMENT. POWER AND DATA CABLES SHALL BE RUN FROM WALL BEHIND DESK AND THEN INTO DESK MILLWORK TO LOCATIONS AS SHOWN. COORDINATE WITH MILLWORK VENDOR PRIOR TO ROUGH-IN.
- PROVIDE 1-1/2" FLEX CONDUIT FOR LOW VOLTAGE CONNECTIONS, IN AS STRAIGHT OF LINE AS POSSIBLE, FROM 18" OFF OF THE BACK WALL AT THE A/V RACK LOCATION TO THE FLOOR BOX AT THE TRAINERS INSTRUCTION STATION . SEE ARCHITECTURAL DETAILS FOR EXACT LOCATION AND ADDITIONAL INFORMATION.
- PREPACKAGED FLOOR BOX KIT PROVIDED BY OTHERS AT RAISED PLATFORM WITH A DEDICATED DUPLEX RECEPTACLE AND SEPARATION FOR LOW VOLTAGE CONNECTIONS. SEE ARCHITECTURAL SHEETS AND DETAIL 16/A8.1 FOR ADDITIONAL INFORMATION.
- 42"x16"x3/4" FIRE RETARDANT AC GRADE PLYWOOD TELEPHONE BOARD. EXTEND 1" CONDUIT FROM LANDLORD DEMARCATION POINT TO CYCLEBAR TELEPHONE BOARD LOCATION.
- EXISTING ELECTRICAL PANELS AND SUSPENDED TRANSFORMER TO REMAIN. SEE RISER DIAGRAM AND PANEL SCHEDULE ON SHEET E4.0 FOR ADDITIONAL INFORMATION.
- PROVIDE COMBO USB/RECEPTACLE AT CHECK-IN MOUNTED AT 48" A.F.F. TO BOTTOM OF UNIT. LEVITON T56631 ONE 120V PLUG, TWO USB PORTS, REFER TO DETAIL 2 ON THIS SHEET.
- TV RECEPTACLE AND DATA. VERIFY LOCATION AND MOUNTING HEIGHT WITH TENANT REPRESENTATIVE.
- PROVIDE (2) CAT6A PLENUM RATED ETHERNET CABLES FROM TV LOCATION TO A/V RACK.
- PROVIDE (2) DEDICATED QUAD RECEPTACLES FOR A/V RACK.
- 208V 1Ø ELECTRIC DRYER AT LOCATION SHOWN, PROVIDE 1"C. 3#10, 1#10 GRD.
- BALANCED XLR PATCH CABLE FROM SUBWOOFER TO A/V RACK.
- A/V RACK SUPPLIED AND INSTALLED BY A/V CONTRACTOR.
- POS TERMINAL - PROVIDE (3) CAT6 CABLES TO A/V RACK.
- G.C. PROVIDED AV CABLING PROTRUDING FROM WALL VIA DOUBLE GANG PLASTER RING, PROVIDE 15' OF SLACK OF AV CABLING AT EACH END. LABEL CABLES CORRECTLY. E.C. TO STUB TWO (2) 1 1/2" CONDUITS 6" ABOVE CEILING FOR CABLING PATHWAY.
- CABLE MODEM LOCATION - PROVIDE (2) CAT6 CABLES TO A/V RACK.
- (2) CAT-6 DATA LINES FROM TELEPHONE BOARD BACK TO AV RACK. TERMINATED AND LABELED BY G.C.
- PROVIDE AND INSTALL THE FOLLOWING: DUCT SMOKE DETECTOR IN RETURN MAIN DUCT AND REMOTE TEST STATION WITH VISIBLE AND AUDIBLE ALARM. SMOKE DETECTOR SHALL SHUT DOWN HVAC UNIT UPON DETECTION OF SMOKE. COORDINATE FINAL LOCATION OF REMOTE TEST STATION WITH AHJ.

NOTE:

ALL COVER PLATES, OUTLETS, AND SWITCHES IN THE CYCLE THEATER SHALL BE FACTORY BLACK ALL OTHERS TO BE FACTORY BRIGHT WHITE.



2 USB/OUTLET COMBO DETAIL
NO SCALE

Amor

Architectural Corporation

9483 HAVEN AVENUE, SUITE 100
RANCHO CUCAMONGA, CA 91730
P. 909.259.9971 | F. 909.944.8409
www.AmorArch.com

WEST COAST | CENTRAL | EAST COAST

CLIENT

CYCLEBAR

910 NW BLUE PARKWAY,
LEE'S SUMMIT, MO 64086
PHONE: 720.378.3062
rachel.hilton@cyclebar.com

CYCLEBAR

INTERIOR TENANT IMPROVEMENT

910-W NORTHWEST BLUE PARKWAY,
LEE'S SUMMIT, MO 64086

FLOOR PLAN - POWER & SYSTEMS

STAMP

5/28/2020

REVISIONS

▲	2020-05-28	FIELD COORDINATION
▲		
▲		
▲		
▲		
▲		
▲		
▲		

DATE

2020.04.10

PROJECT NUMBER

A2276

SHEET NUMBER

E3.0

© COPYRIGHT 2020 - DESIGNS, DRAWINGS AND SPECIFICATIONS ARE INSTRUMENTS OF SERVICE AND ARE THE PROPERTY OF THE DESIGN PROFESSIONAL. REPRODUCTION PROHIBITED WITHOUT THE EXPRESSED WRITTEN CONSENT OF THE DESIGN PROFESSIONAL.