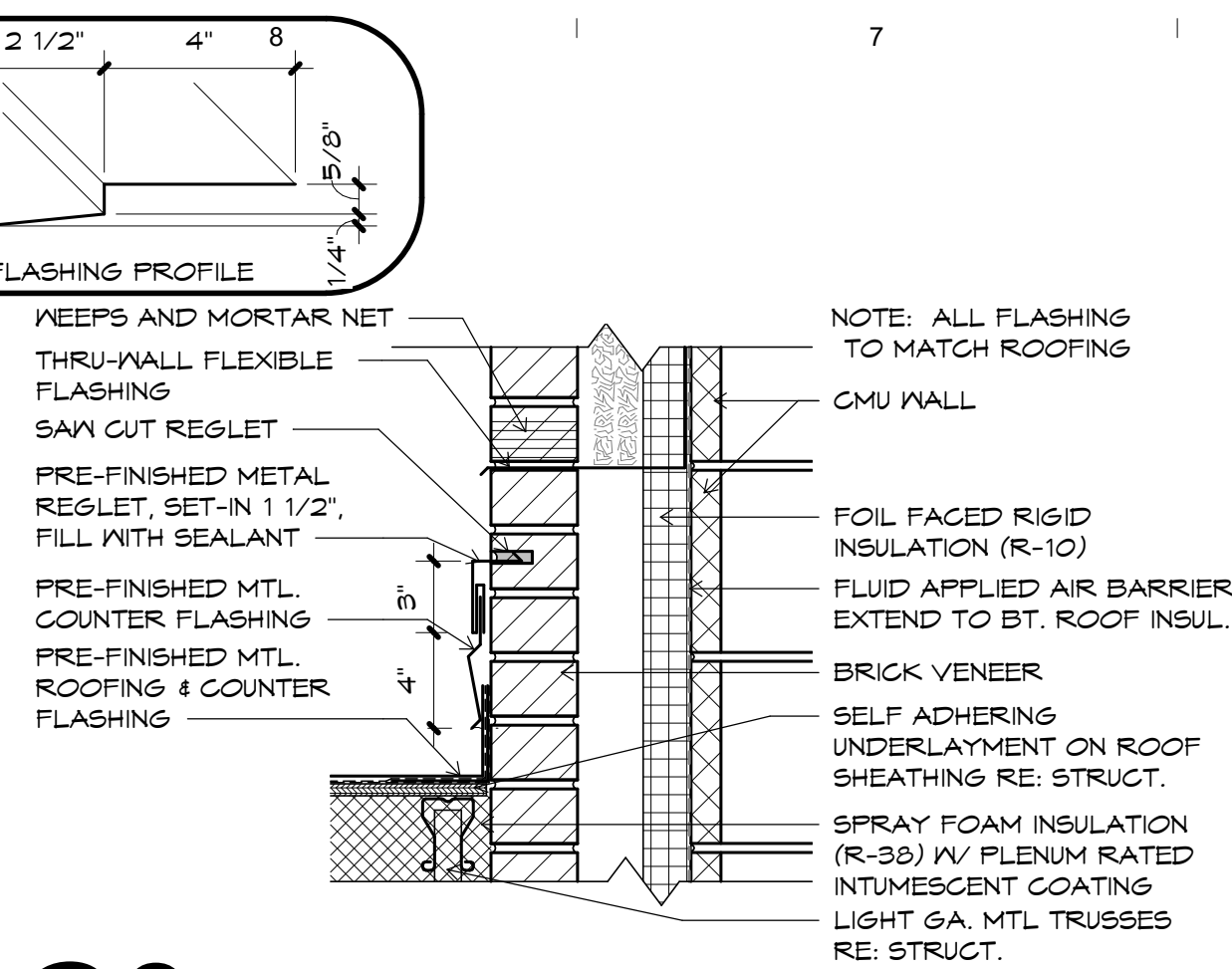
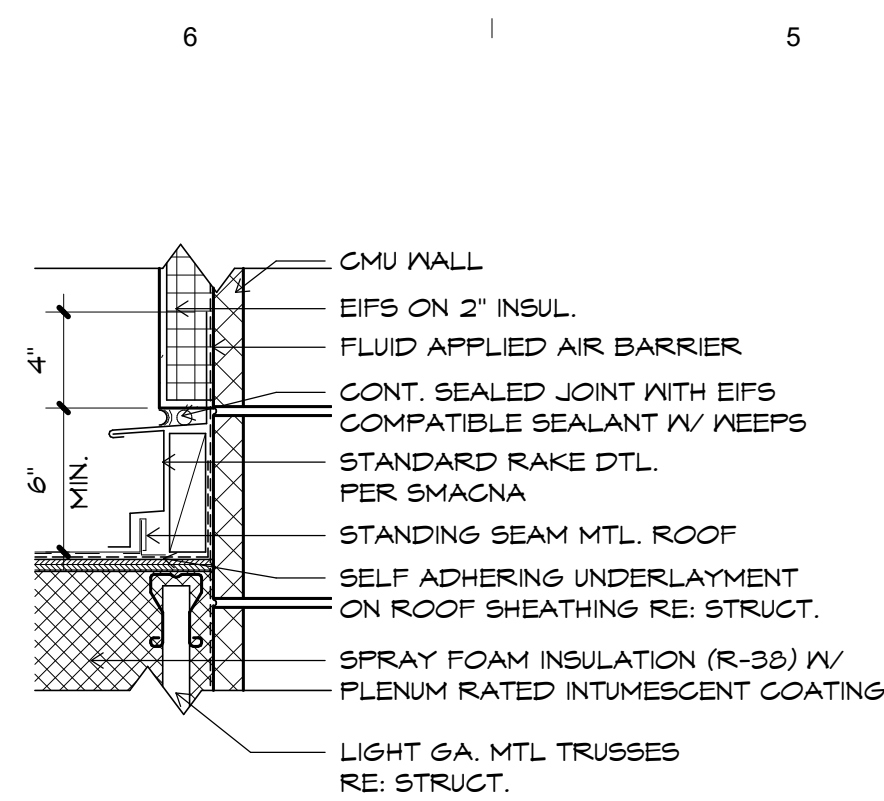


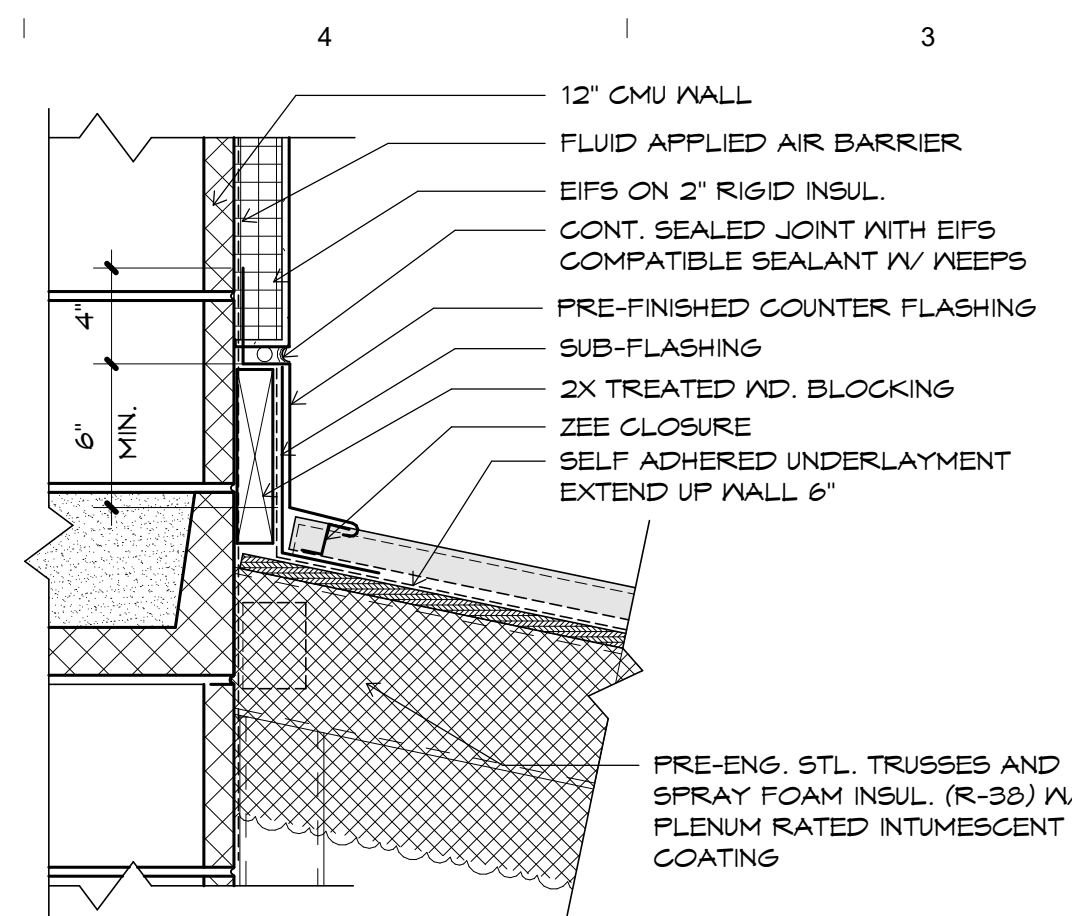
G10 WINDOW SILL/HEAD
5" = 1'-0"



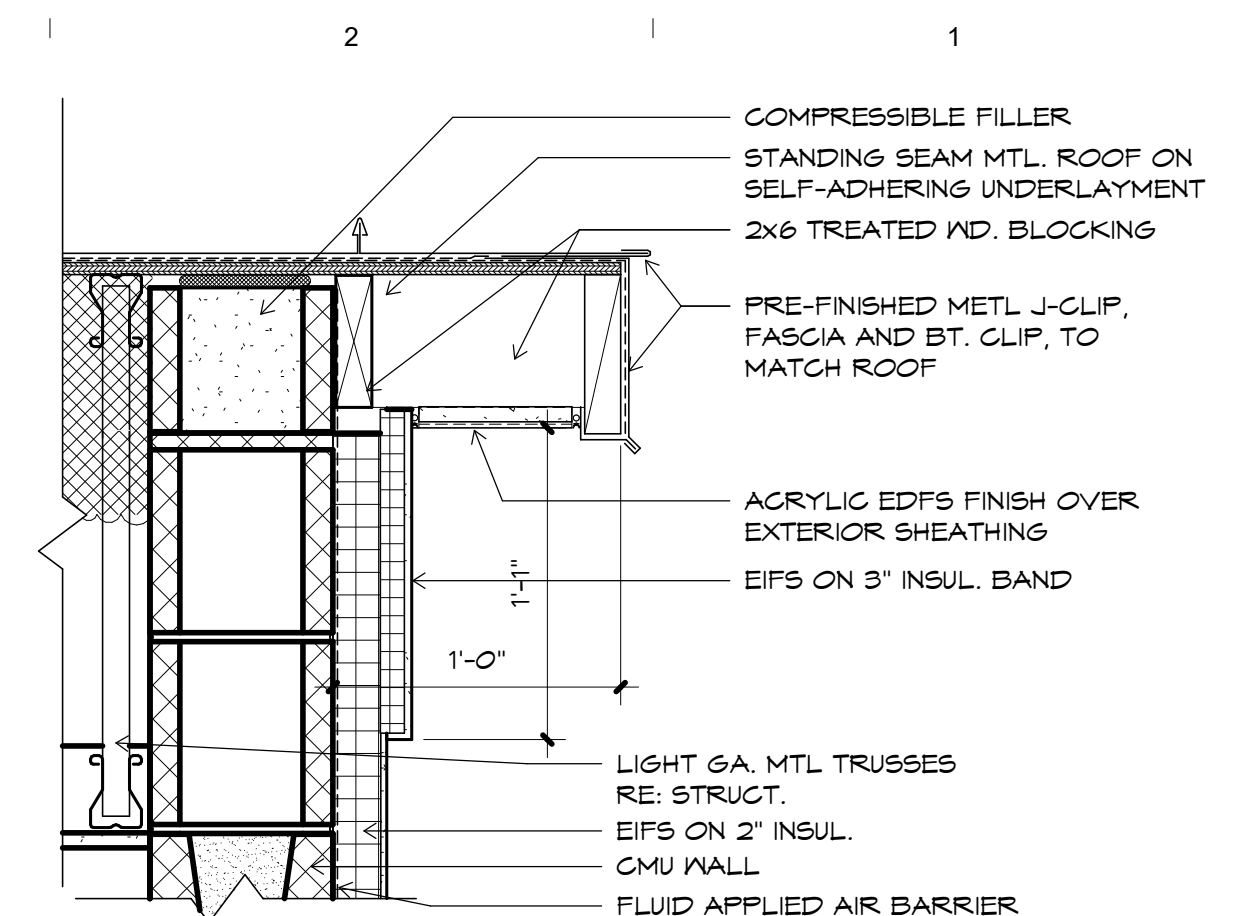
G8 FLASHING DETAIL
1 1/2" = 1'-0"



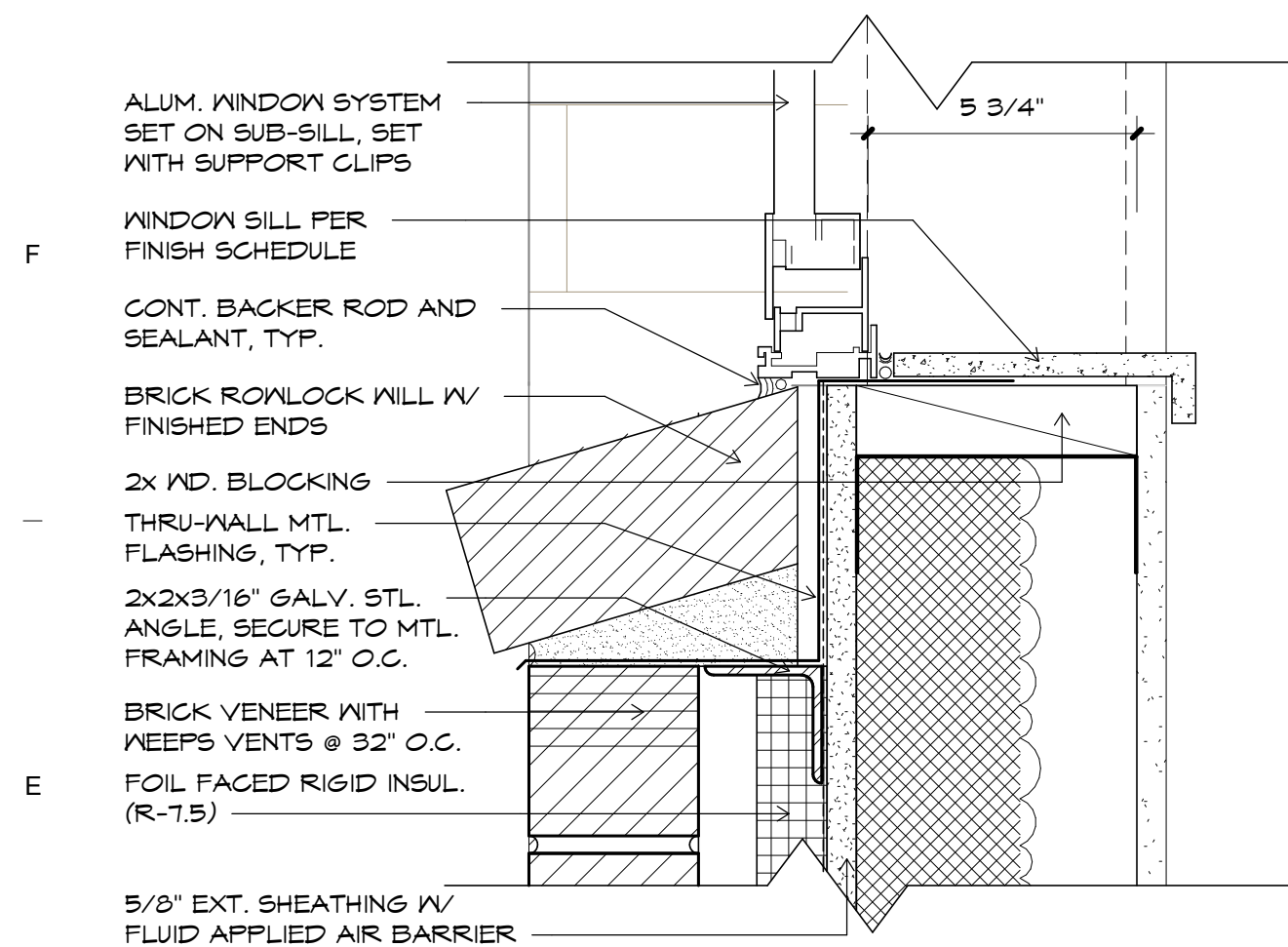
G6 FLASHING DETAIL
1 1/2" = 1'-0"



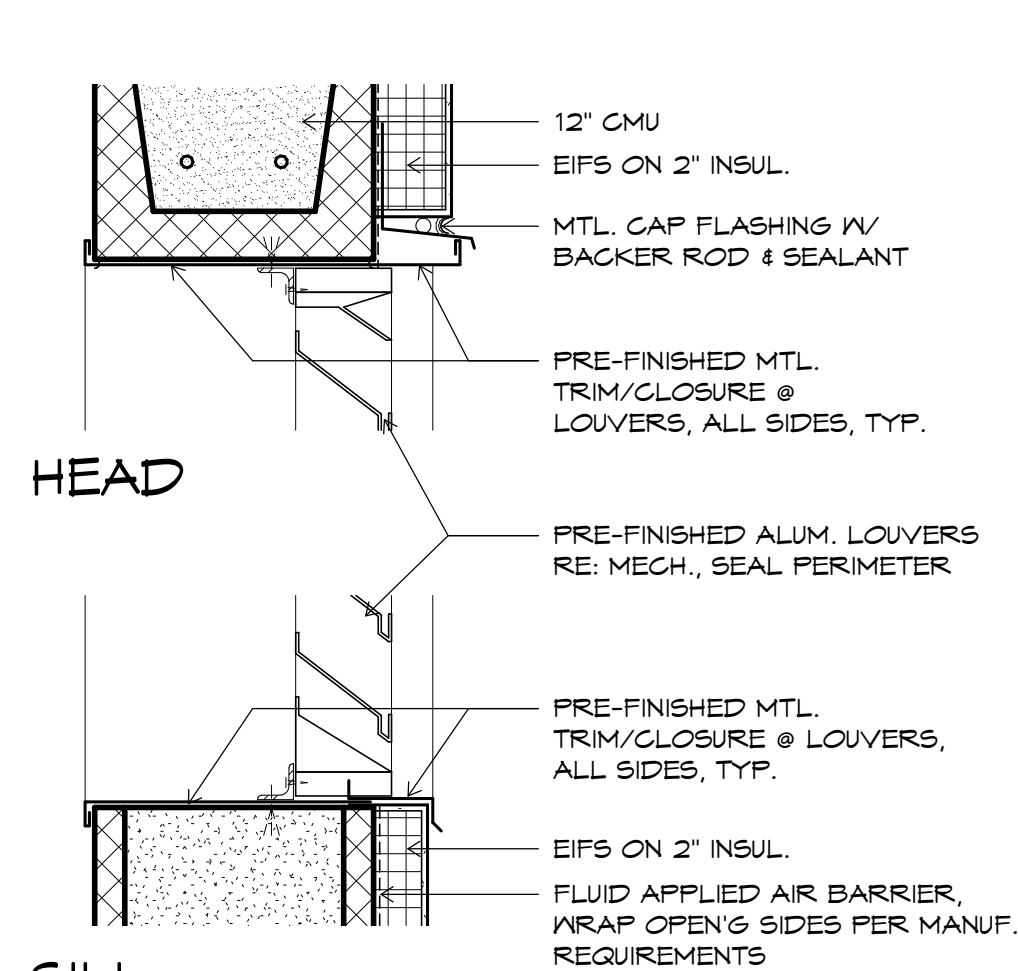
G4 FLASHING DETAIL
1 1/2" = 1'-0"



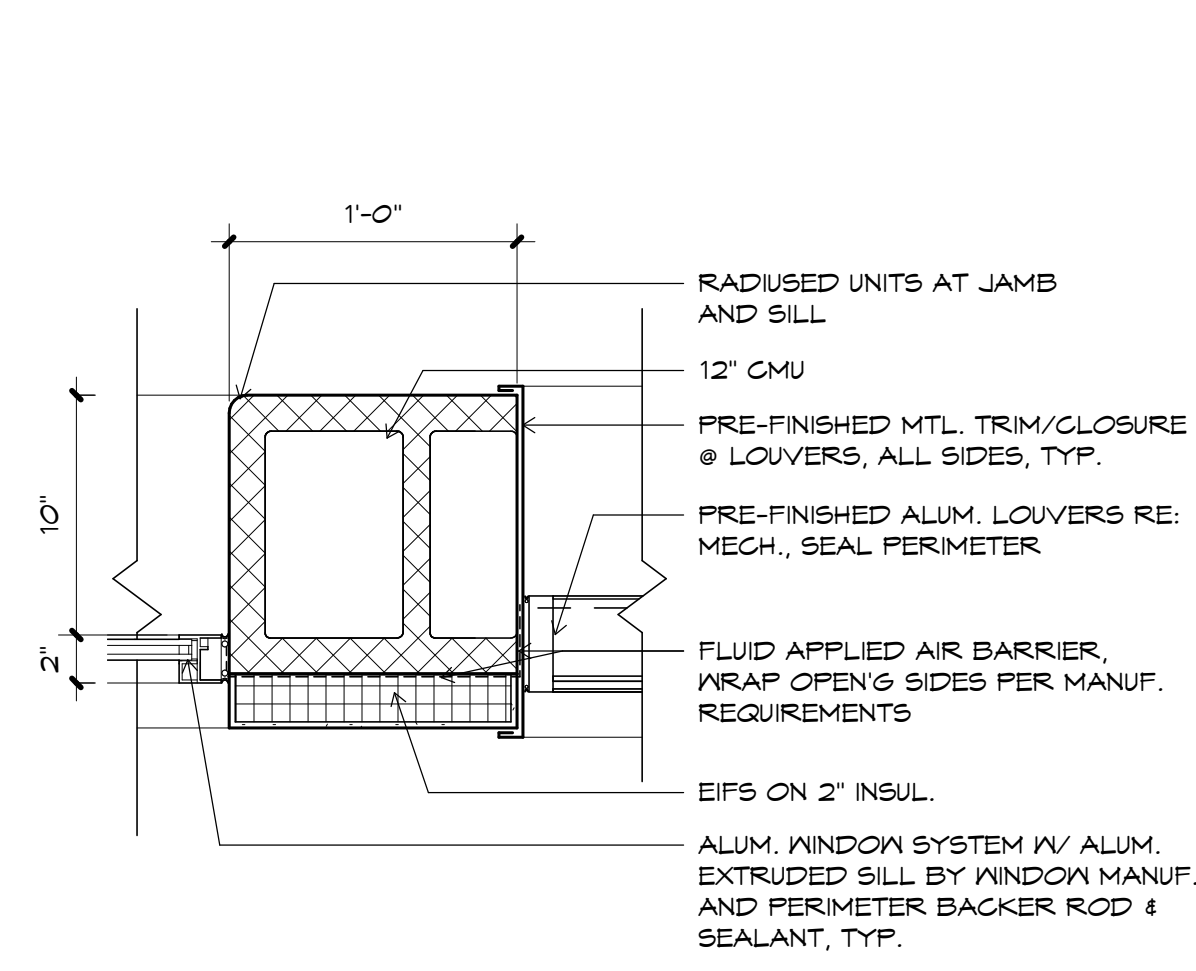
G2 ROOF EDGE DETAIL
1 1/2" = 1'-0"



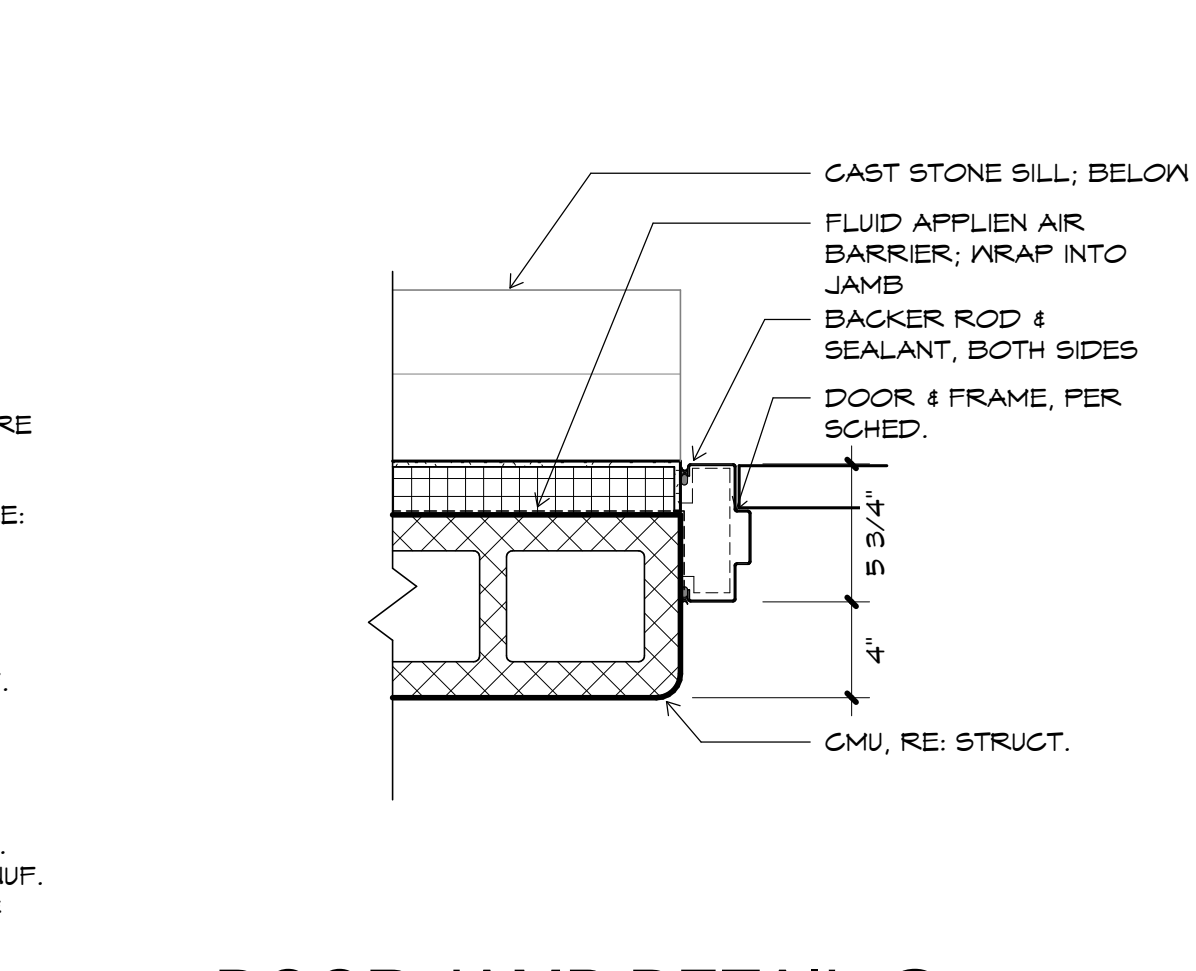
E10 ROWLOCK SILL
5" = 1'-0"



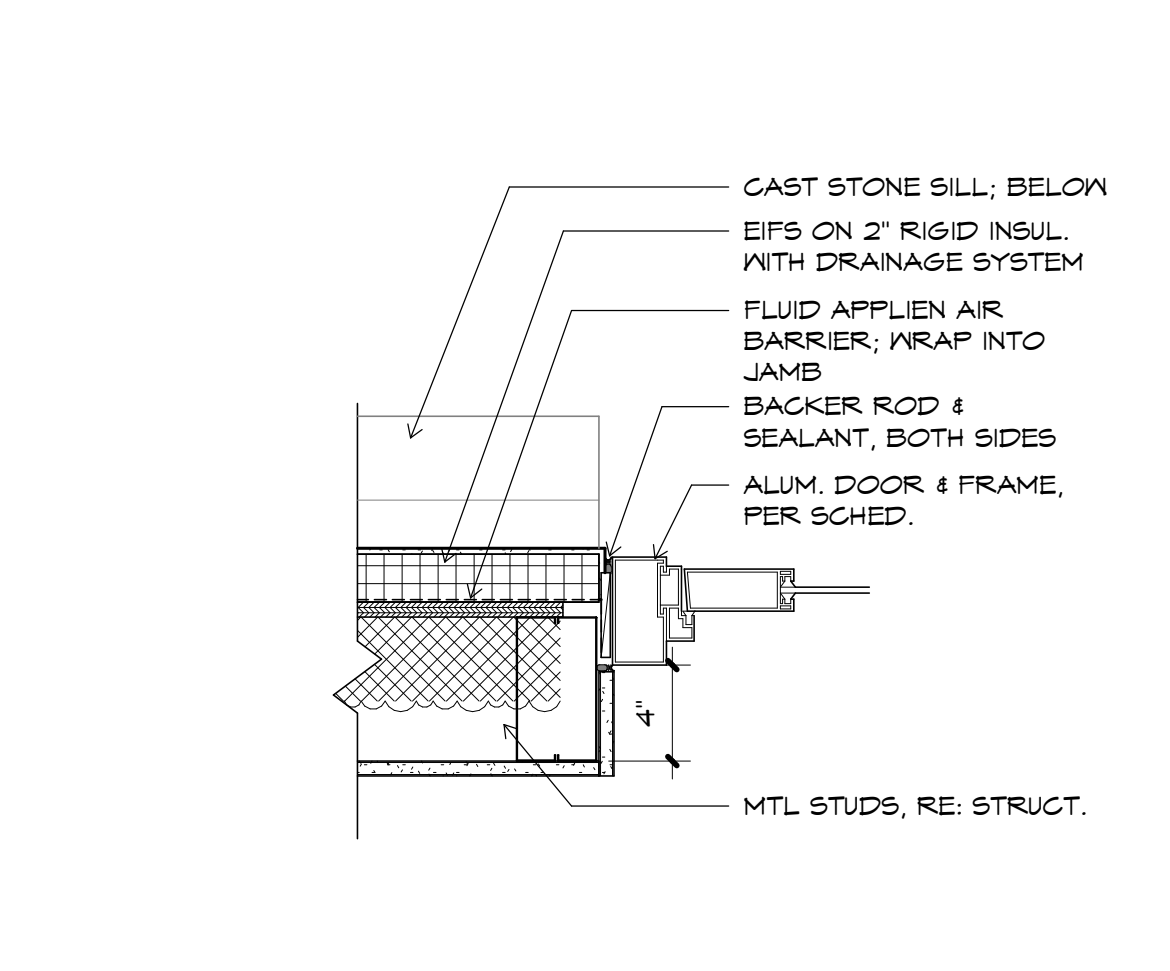
E8 LOUVER HEAD/SILL
1 1/2" = 1'-0"



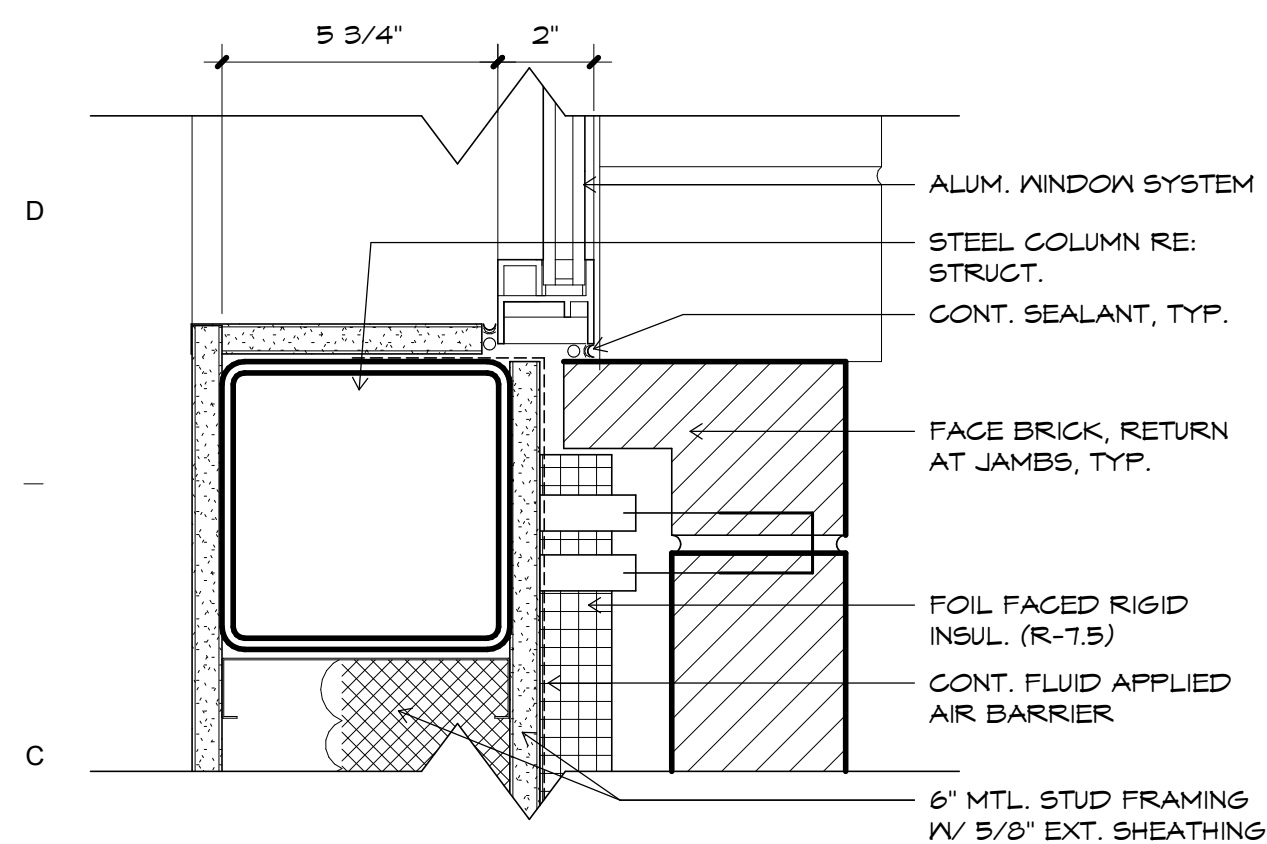
E6 JAMB DETAIL
1 1/2" = 1'-0"



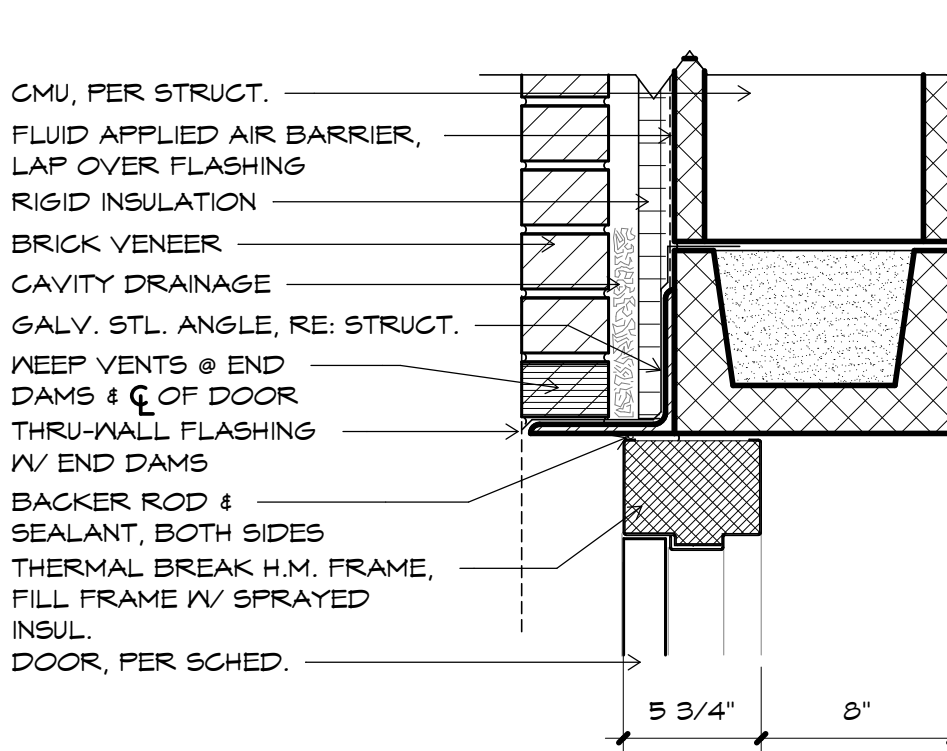
E4 DOOR JAMB DETAIL @ STUCCO ON CMU
1 1/2" = 1'-0"



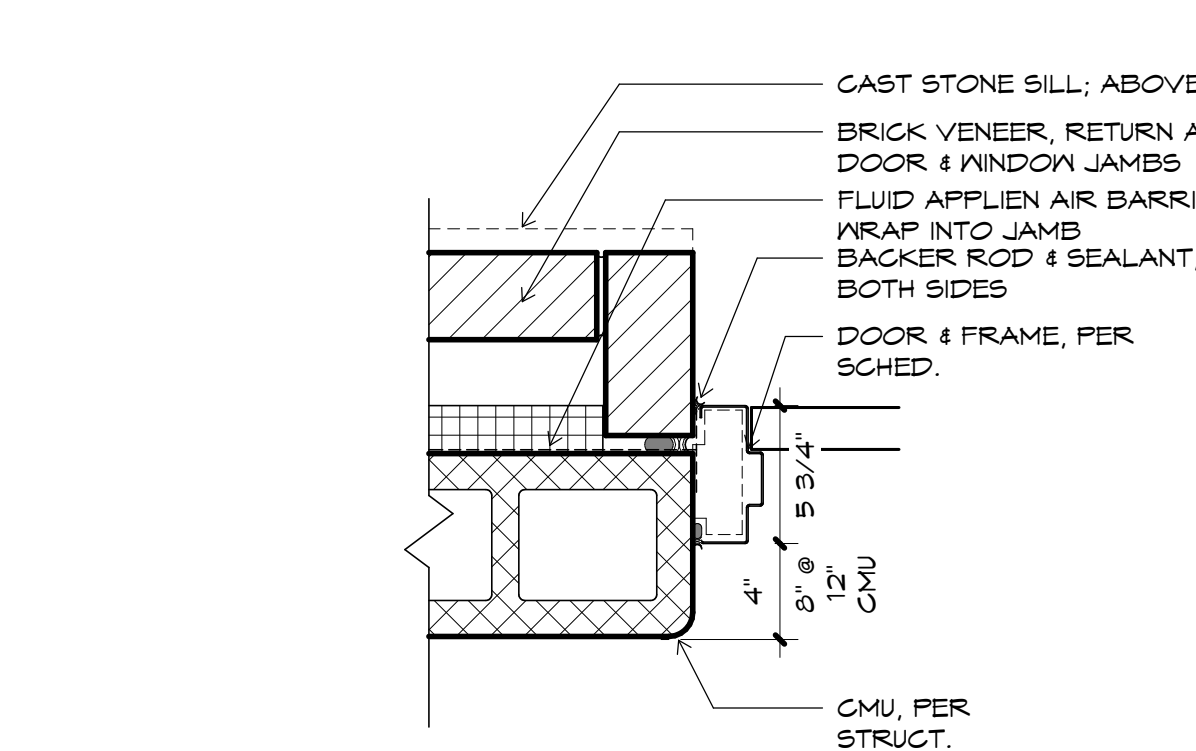
E2 DOOR JAMB DETAIL @ STUCCO ON MTL STUD
1 1/2" = 1'-0"



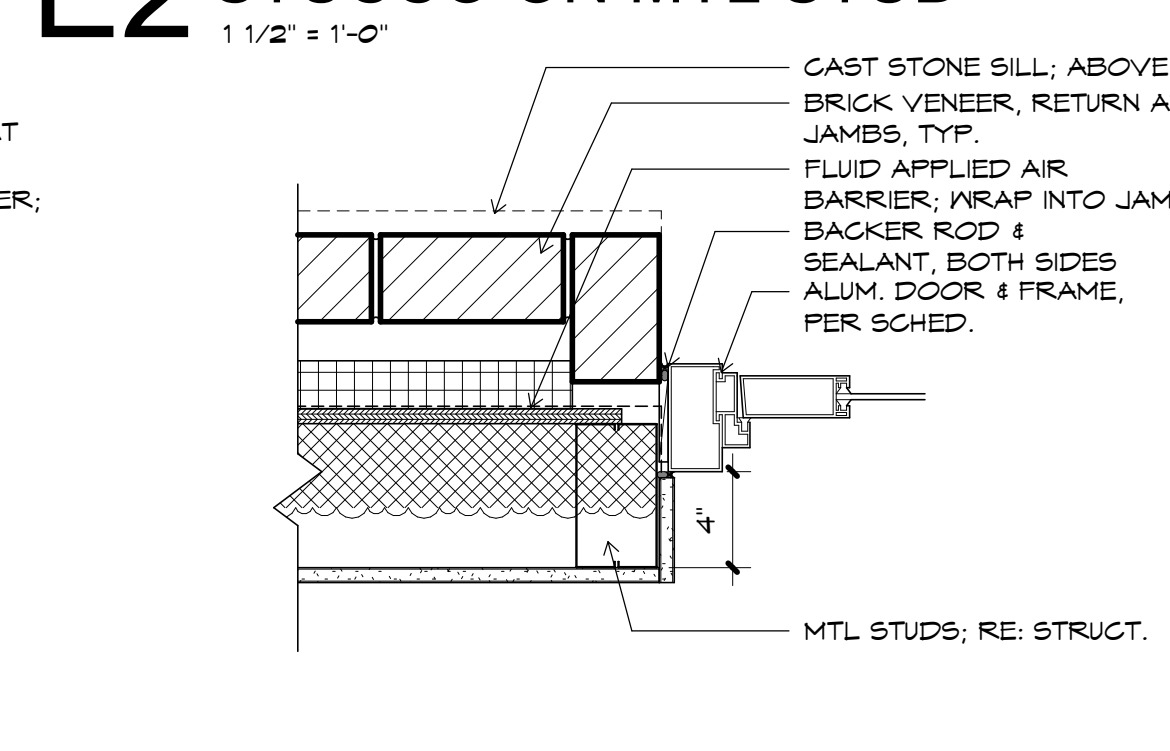
C10 WINDOW JAMB
5" = 1'-0"



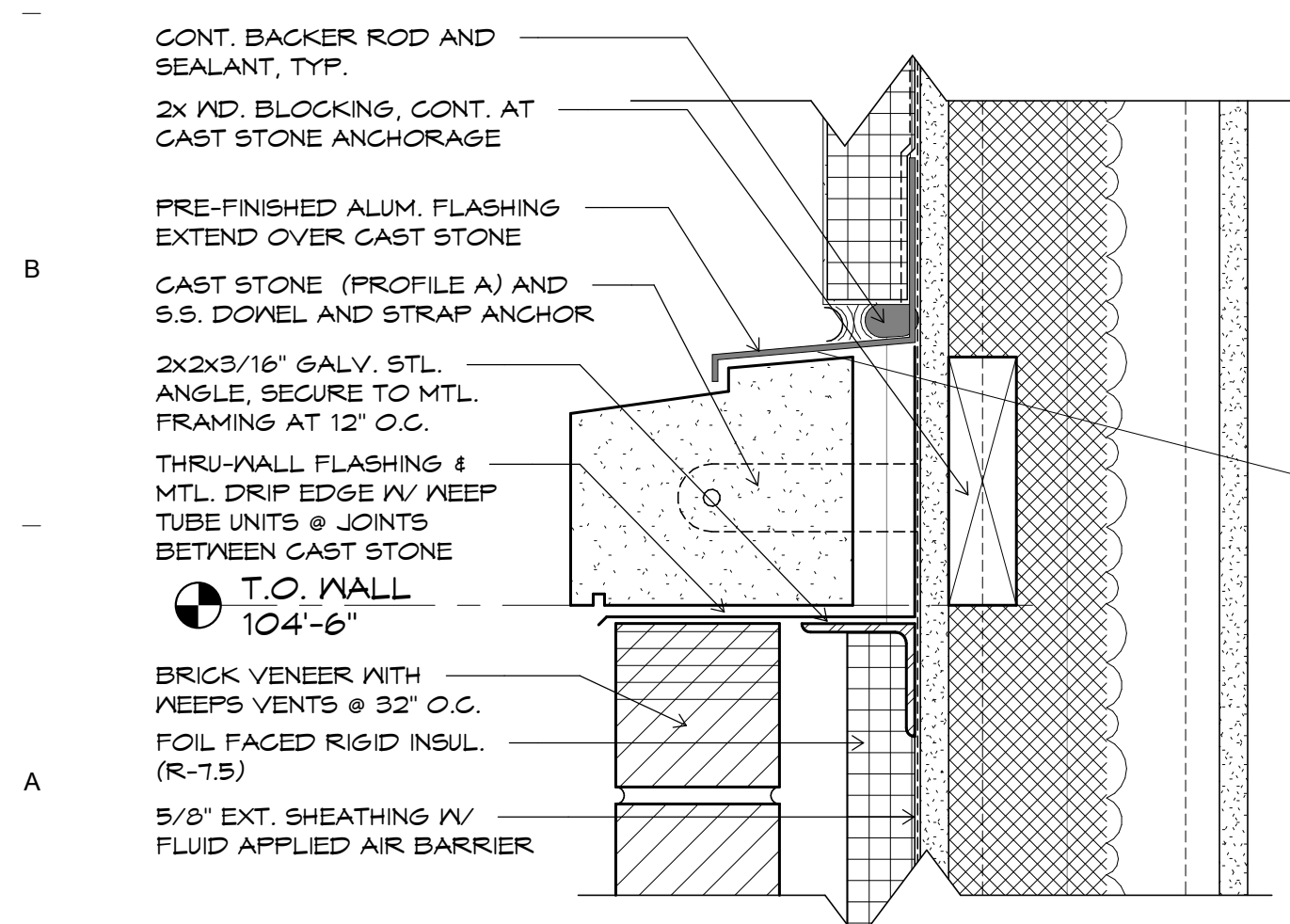
C6 DOOR HEAD DETAIL @ BRICK ON CMU
1 1/2" = 1'-0"



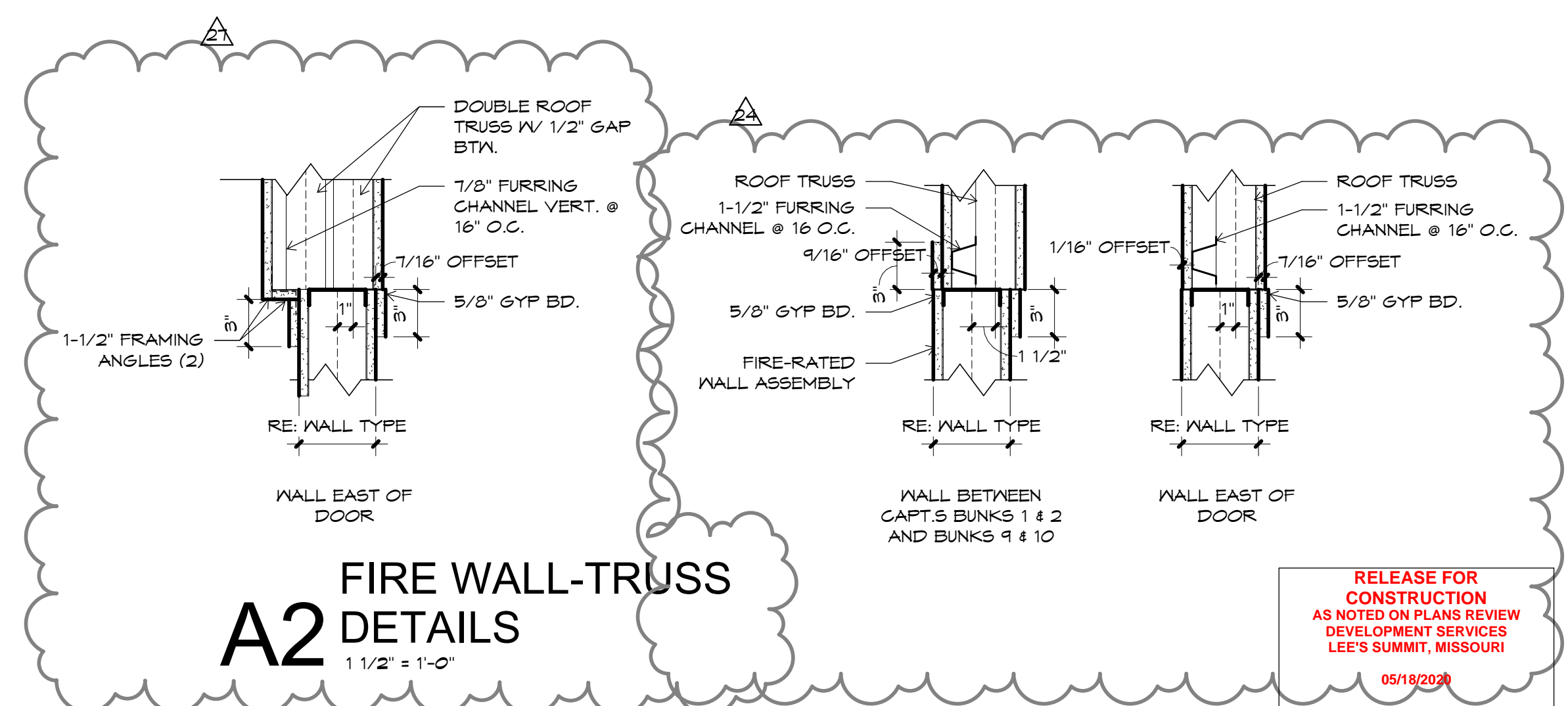
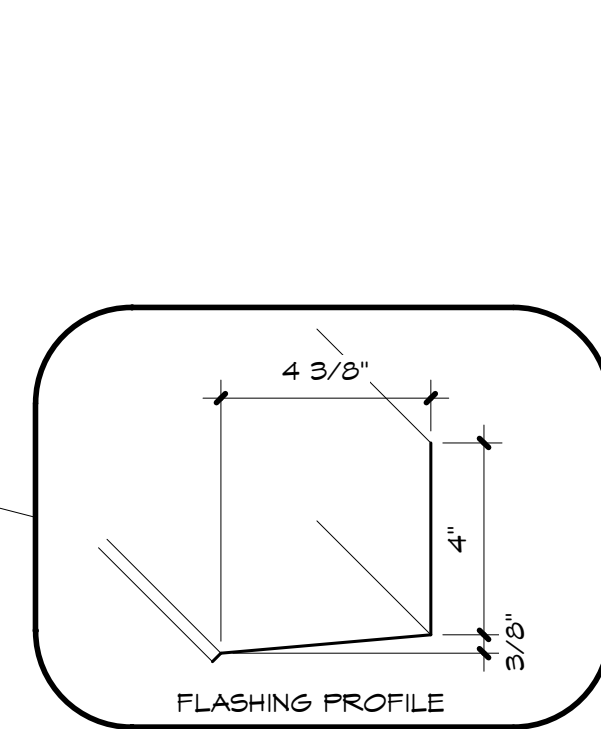
C4 DOOR JAMB DETAIL @ BRICK ON CMU
1 1/2" = 1'-0"



C2 DOOR JAMB DETAIL @ BRICK ON MTL STUD
1 1/2" = 1'-0"



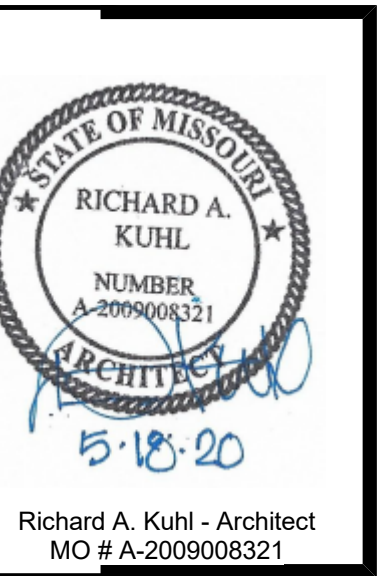
A10 CAST STONE
5" = 1'-0"



A2 FIRE WALL-TRUSS DETAILS
1 1/2" = 1'-0"

JOB NUMBER		
— 17016 —		
ISSUE DATE		
—07/25/2018—		
REVISIONS		
4	ASI #B	2/26/20
7	ASI #BR	5/15/20

Williams Spurgeon
Kuhl & Freshnock
Architects, Inc. © 2018



LEE'S SUMMIT FIRE STATION #3

PRYOR ROAD
LEE'S SUMMIT, MO 64081

City of Lee's Summit

110 Armour Road North Kansas City, Missouri 64116 Tel. 816.300.4101 Fax 816.300.4102

Williams
Spurgeon
Kuhl &
Freshnock
Architects, Inc.
Missouri Certificate of Authority
#2003011262

DETAILS

A3.03

RELEASE FOR
CONSTRUCTION
AS NOTED ON PLANS REVIEW
DEVELOPMENT SERVICES
LEE'S SUMMIT, MISSOURI
05/19/2020