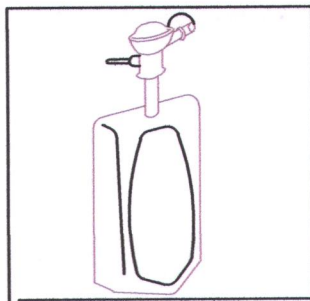


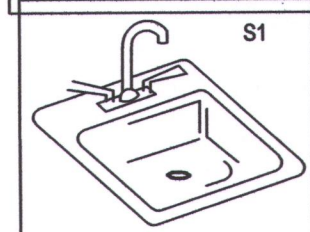
GENERAL REQUIREMENTS

- ALL WORK SHALL BE DONE IN ACCORDANCE WITH LOCAL BUILDING, MECHANICAL, PLUMBING CODES NATIONAL ELECTRICAL CODE, NATIONAL FIRE PROTECTION CODE, EPA REGULATIONS, AND OCCUPATIONAL SAFETY AND HEALTH ACT, UNIFORM MECHANICAL, PLMG & FIRE CODES.
- CONTRACTOR SHALL INCLUDE ALL LABOR, MATERIAL, AND EQUIPMENT TO PROVIDE COMPLETE AND FUNCTIONING INSTALLATIONS, AND ALL MATERIAL AND EQUIPMENT SHALL BE NEW UNLESS OTHERWISE SPECIFIED.
- CONTRACTOR SHALL PROTECT ALL EXISTING WORK TO REMAIN, AND SHALL REPAIR ANY DAMAGED INCIDENTAL TO PERFORMANCE OF NEW WORK.
- INTERFERENCE WITH OWNERS OPERATIONS OR INTERRUPTION OF SERVICES SHALL BE FULLY COORDINATED WITH OTHERS.
- ACCEPTANCE OF WORK SHALL BE SUBJECT TO OWNER'S REPRESENTATIVE APPROVAL OF WORK IN PLACE AS WELL AS SHOP DRAWINGS AND SAMPLES OF MATERIALS AND EQUIPMENT WHICH SHALL BE CHECKED BY CONTRACTOR BEFORE SUBMITTAL.
- ALL PERMITS AND LICENSES THAT ARE REQUIRED BY GOVERNING AUTHORITIES FOR THE PERFORMANCE OF MECHANICAL WORK SHALL BE PROCURED AND PAID FOR BY THE CONTRACTOR.

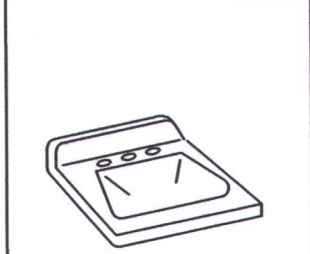
PLUMBING FIXTURE SCHEDULE



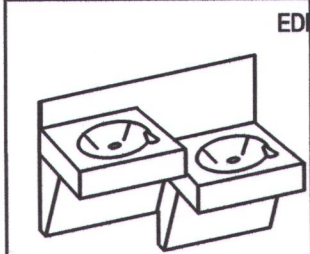
URINAL - AMERICAN STANDARD #6400.0114 VITREOUS CHINA WATER SAVER (1.5 GALLONS PER FLUSH) URINAL W/INTEGRAL SPREADER FLOOR MOUNTED WISLOAN ROYAL 186 FLUSH VALVE, STRAINER TOP SPUD, 1/2" CW, 2" WASTE, 1-1/2" VENT.



SINK - DAYTON D-12522 STAINLESS STEEL SELF RIMMING, SINK W/4 HOLES - 3 HOLES FOR LK-232-S-BH-5 HI ARC SINGLE LEVER FAUCET WITH 5" WRIST BLADES. INCLUDE FLEXIBLE SUPPLIES W/WHEEL HANDLE STOPS AND 1-1/2" P-TRAP AND CUP STRAINER. 1/2" H & CW, 1-1/2" WASTE, 1-1/2" VENT.



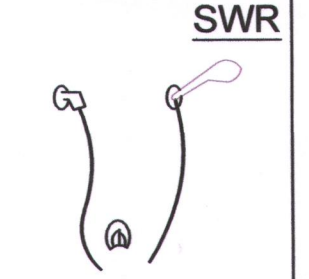
BATHMASTER - BF7404-00 W/NTROP 20 X 18 WALL HUNG, 4" CENTERSET FAUCET, INCLUDE STRAINER, OR EQUAL FAUCET: DELTA 2567 - LPH H22, A22 CHROME, OR EQUAL



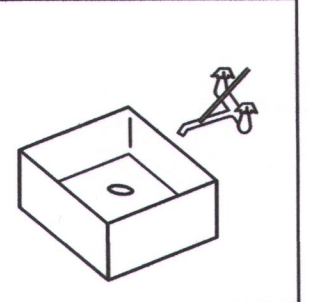
DRINKING FOUNTAIN - HALSEY TAYLOR HI-LO BARRIER FREE COOLER, STEEL CABINET, MOSS GRAY COLOR. SHALL DELIVER 8.7 GPH OF 50°F WATER AT 90°F AMBIENT, 120V, 1/2, 1/5 HP. COMPRESSOR, 4.5 FLA, 350 WATTS. PROVIDE REFRIGERATION UNIT AND MOUNTING HINGE (ALL LEAD FREE PIPING) 1/2" CW, 1-1/2" WASTE, 1-1/4" VENT. HANDICAPPED MOUNTING HEIGHT 35" A.F.F. TO RIM + 28" CLEARANCE BENEATH.



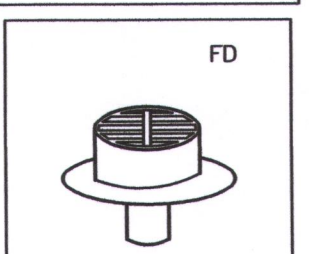
WATER CLOSET - GERBER, AQUA SAVER 21-702 ROUND VITREOUS CHINA, ELONGATED FLOOR OUTLET, SIPHON JET ACTION, TANK TYPE TOILET W/WHITE, SOLID PLASTIC - KOHLER #KA716 OPEN FRONT SEAT LESS COVER. PROVIDE FLEXIBLE SUPPLY PIPE WITH WHEEL HANDLE STOP, 1/2", 4" WASTE, 2" VENT. HCWC - HANDICAPPED WC GERBER, AQUA SAVER 21-718, 18" A.F.F. TO RIM. KOHLER K-4712 SEAT



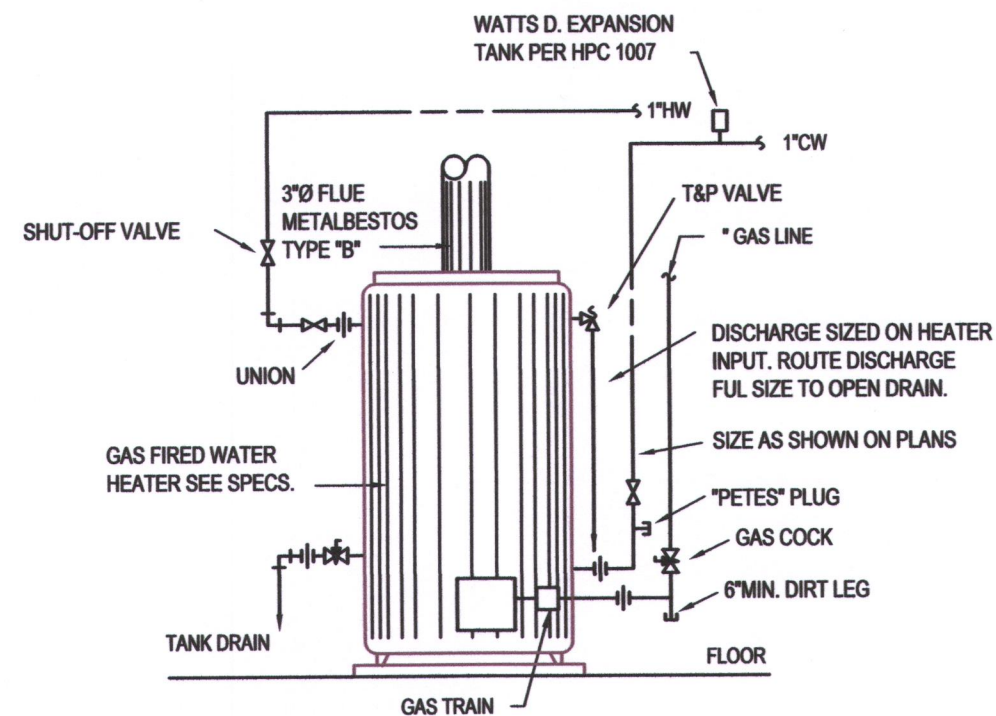
SHOWER FOR 45" SHOWER. LASCO #1423-BFS. PROVIDE WITH DRAIN, MIXING VALVE, FAUCETS, AND "P" TRAP. SHOWER FOR 62" SHOWER. LASCO #1603-BFSD. PROVIDE WITH DRAIN, MIXING VALVE, FAUCETS, AND "P" TRAP. SHOWER HANDLE, MOEN # TL181, TEMP LIMITOR. VALVE MEON # 62370. SHOWER FLOOR DRAIN - JONES #3D37P BLOT DOWN FLOOR DRAIN AND SHOWER DRAIN., 3" WASTE.



JANITOR SINK - WILLIAMS MODEL M7B-24" 24" FLOOR MOUNTED BASIN W/AMERICAN STANDARD 8341.075 FAUCET WITH VACUUM BREAKER. INCLUDE VINYL BUMPER FOR EXPOSED SIDE & PROVIDE P-TRAP FOR DRAIN. 1/2" H & CW, 3" WASTE, 2" VENT.



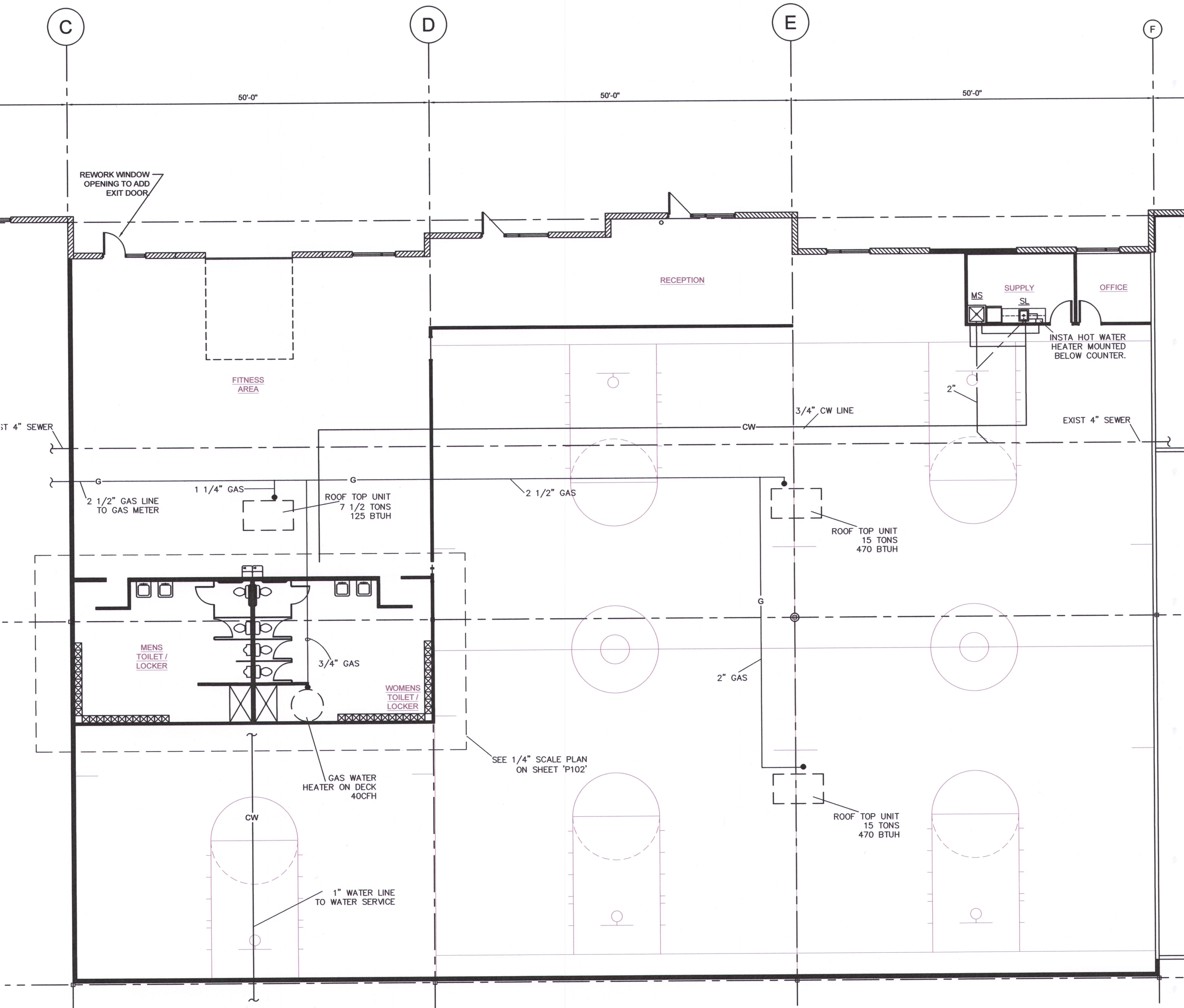
FLOOR DRAIN - JOSAM 32000 CAST IRON, ROUND 7" NIKOLLOY MEDIUM DUTY LOOSE SET ANTI-TILTING GRATE. SIZE TO SUIT PIPE SIZE AS SHOWN ON DWG. OR EQUAL.



GAS WATER HEATER DETAIL

NO SCALE APPROX. 1000 LBS OPERATING WEIGHT

WATER HEATER A: STATE #PR6 50 NOVET, 50 GALLON, NATURAL GAS-FIRED HEATER REQUIRING 50 CFH NATURAL GAS FOR 27 GPH RECOVER @ 90 RISE. HEATER TO BE FITTED WITH T&P VALVE WITH AGA RATING OF MIN. 10% ABOVE BTU INPUT OF HEATER. VALVES SET FOR 150 PSI @ 210 WATER. THERMO-BOND PROTECTIVE COATED THERMOSTAT TUBE OF LENGTH REQ'D. FOR INSERTION INTO HOTTEST WATER IN TANK. INSTALL VALVE DIRECTLY TO HEATER WITHOUT ELBOWS AND/OR COUPLINGS. EXTEND FULL-SIZE COPPER DRAIN LINE FROM VALVE TO WITHIN 6" OF FLOOR DRAIN. VENT PIPING SHALL BE 4"



1 Floor Plan scale: 1/8"=1'-0"



CASBURN CONSULTANTS  
Professional Engineering  
Mechanical \* Electrical \* Plumbing  
128 SW HILLCREST LANE, LEES SUMMIT, MO 64063  
C: (816) 726-6531  
E-mail: jwcasburn@att.net

TENANT INFILL FOR

PICKUP USA FITNESS

AT  
2724 NE McBAINE DRIVE  
LEE'S SUMMIT MISSOURI

DATE: 4/20/2020

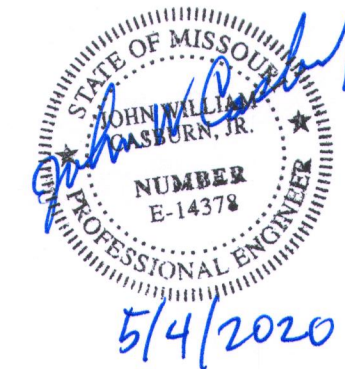
REVISIONS:

- 1
- 2
- 3
- 4
- 5



ARCHITECTURAL SERVICES  
Robert J. Shirk Jr. - Principal / Project Mgr.

3009 ELMIRA CT.  
INDEPENDENCE, MISSOURI 64057  
(816) 797-7115



SHEET NO.

P101

© 2020