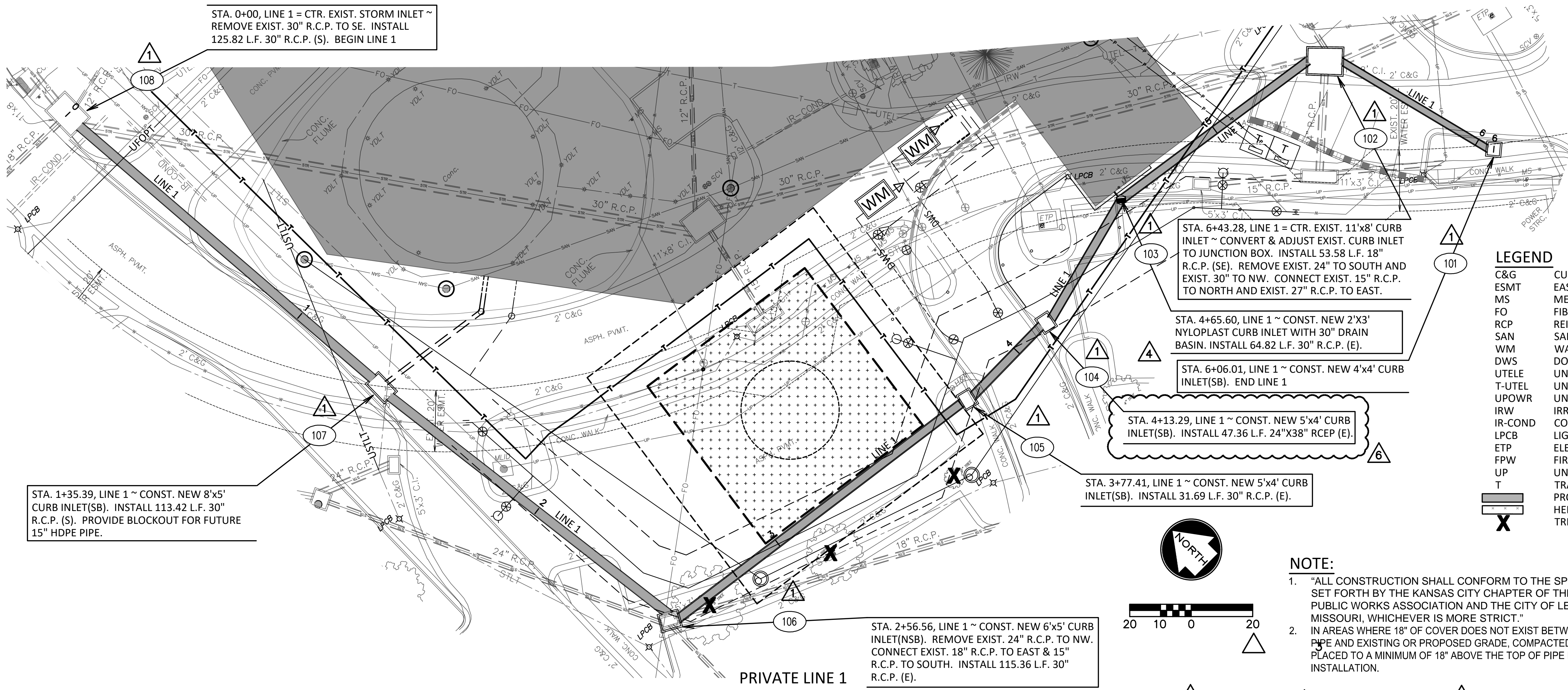


NOTICE: McClure Engineering Company waives any and all responsibility and liability for problems which arise from failure to follow these Plans, Specifications, and the engineering intent they convey, or for problems which arise from failure to obtain and/or follow the engineer's guidance with respect to any errors, omissions, inconsistencies, ambiguities, or conflicts which are alleged.

COPYRIGHT: Copyright and property rights in these documents are expressly reserved by McClure Engineering Company. No reproductions, changes, or copies in any manner shall be made without obtaining prior written consent from McClure Engineering Company.

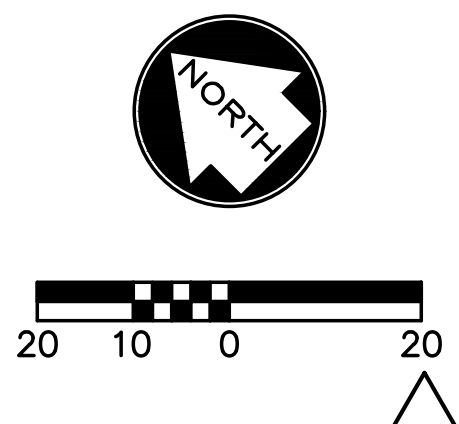


LEGEND

C&G	CURB & GUTTER
ESMT	EASEMENT
MS	METAL SIGN
FO	FIBER OPTIC
RCP	REINFORCED CONCRETE PIPE
SAN	SANITARY SEWER
WM	WATER METER
DWS	DOMESTIC WATER SERVICE
UTELE	UNDERGROUND TELEPHONE
T-UTELE	UNDERGROUND TELEPHONE
UPOWR	UNDERGROUND POWER
IRW	IRRIGATION
IR-COND	CONDUIT
LPCB	LIGHT POLE CONCRETE BASE
ETP	ELECTRIC TRANSFORMER
FPW	FIRE PROTECTION WATER
UP	UNDERGROUND POWER
T	TRANSFORMER
	PROPOSED BUILDING
	HELIPAD
X	TREE TO BE REMOVED

NOTE:

- "ALL CONSTRUCTION SHALL CONFORM TO THE SPECIFICATIONS SET FORTH BY THE KANSAS CITY CHAPTER OF THE AMERICAN PUBLIC WORKS ASSOCIATION AND THE CITY OF LEE'S SUMMIT, MISSOURI, WHICHEVER IS MORE STRICT."
- IN AREAS WHERE 18" OF COVER DOES NOT EXIST BETWEEN THE TOP OF PIPE AND EXISTING OR PROPOSED GRADE, COMPACTED FILL SHOULD BE PLACED TO A MINIMUM OF 18" ABOVE THE TOP OF PIPE PRIOR TO INSTALLATION.



STA. 1+35.39, LINE 1 ~ CONST. NEW 8'x5' CURB INLET(SB). INSTALL 113.42 L.F. 30" R.C.P. (S). PROVIDE BLOCKOUT FOR FUTURE 15" HDPE PIPE.

STA. 6+43.28, LINE 1 = CTR. EXIST. 11'x8' CURB INLET ~ CONVERT & ADJUST EXIST. CURB INLET TO JUNCTION BOX. INSTALL 53.58 L.F. 18" R.C.P. (SE). REMOVE EXIST. 24" TO SOUTH AND EXIST. 30" TO NW. CONNECT EXIST. 15" R.C.P. TO NORTH AND EXIST. 27" R.C.P. TO EAST.

STA. 4+65.60, LINE 1 ~ CONST. NEW 2'X3' NYLOPLAST CURB INLET WITH 30" DRAIN BASIN. INSTALL 64.82 L.F. 30" R.C.P. (E).

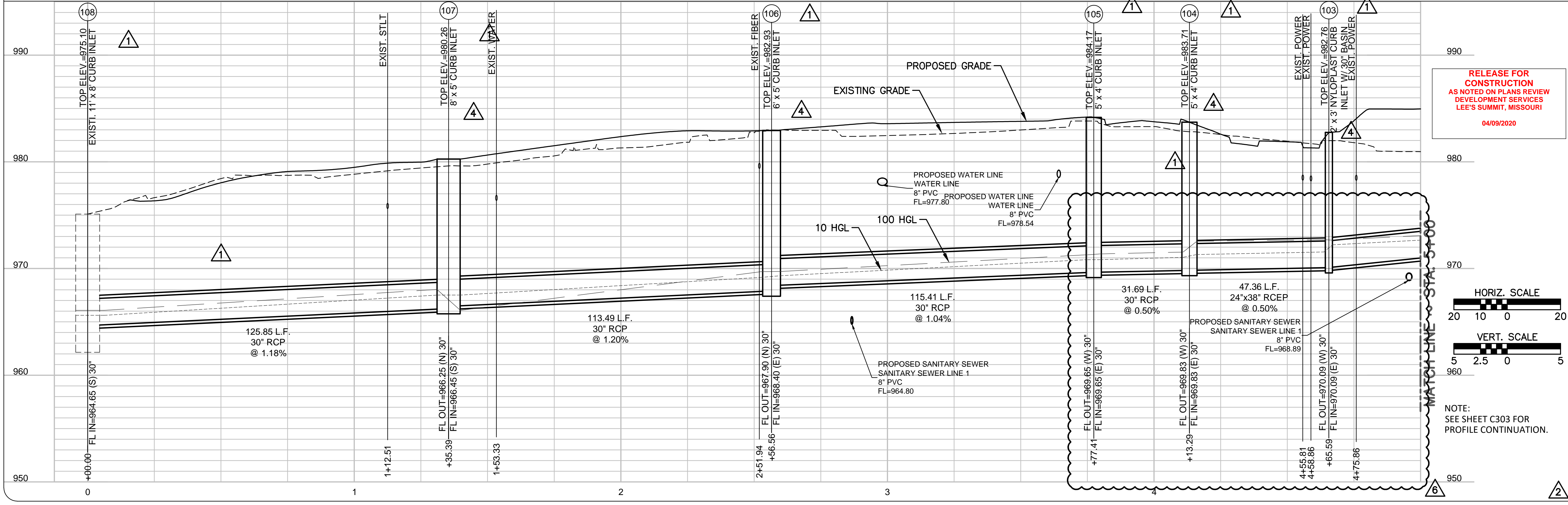
STA. 6+06.01, LINE 1 ~ CONST. NEW 4'x4' CURB INLET(SB). END LINE 1

STA. 4+13.29, LINE 1 ~ CONST. NEW 5'x4' CURB INLET(SB). INSTALL 47.36 L.F. 24"x38" RCEP (E).

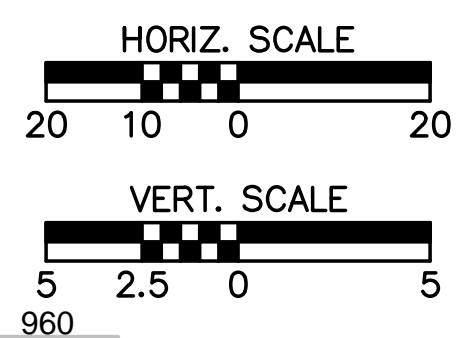
STA. 3+77.41, LINE 1 ~ CONST. NEW 5'x4' CURB INLET(SB). INSTALL 31.69 L.F. 30" R.C.P. (E).

STA. 2+56.56, LINE 1 ~ CONST. NEW 6'x5' CURB INLET(NSB). REMOVE EXIST. 24" R.C.P. TO NW. CONNECT EXIST. 18" R.C.P. TO EAST & 15" R.C.P. TO SOUTH. INSTALL 115.36 L.F. 30" R.C.P. (E).

PRIVATE LINE 1



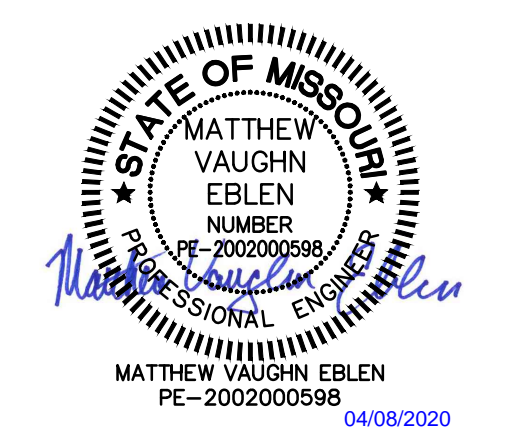
RELEASE FOR CONSTRUCTION
AS NOTED ON PLANS REVISION DEVELOPMENT SERVICES LEE'S SUMMIT, MISSOURI
04/09/2020



NOTE:
SEE SHEET C303 FOR PROFILE CONTINUATION.

**SANT LUKE'S FLEX FACILITY EXPANSION PRIVATE
SANITARY SEWER, PRIVATE STORM SEWER &
PUBLIC WATER MAIN IMPROVEMENTS
LEE'S SUMMIT, MISSOURI**

STORM SEWER PLAN & PROFILE (1)



ISSUE DATE: 11-18-2019

REVISIONS:

3	PER CITY COMMENTS	02-06-2020
4	PER OWNER	02-18-2020
6	ESI	04-08-2020

ENGINEER: MVE
DESIGNED BY: KJL
DRAWN BY: KJL
CHECKED BY: MVE

McCLURE PROJECT NO.: 190891-000
SHEET NO.: **C302**

STA. 0+00, LINE 2 = STA. 0+00, LINE 3 = CTR.
EXIST. JUNCTION BOX ~ INSTALL 56.77 L.F. 15"
R.C.P.(SW). INSTALL 36.01 L.F. 15" R.C.P. (S).
BEGIN LINES 2 & 3

STA. 0+00, LINE 4 = CTR. EXIST. 11'x3' CURB
INLET ~ INSTALL 53.99 L.F. 18" R.C.P. (SW) &
CONST. 48 L.F. STREET & CURB REPAIR.
BEGIN LINE 4

STA. 0+57.92, LINE 4 ~ CONST. NEW 4'x4'
AREA INLET (OPENING TO SW). END LINE 4

STA. 0+41.41, LINE 3 ~ CONST. NEW
5'x5' CURB INLET(NSB). END LINE 3

STA. 0+60.90, LINE 2 ~ CONST. NEW 4'x4'
AREA INLET (OPENINGS TO E & W). END
LINE 2

REMOVE EXISTING 15" R.C.P.
AND EXISTING CURB INLET

LEGEND

C&G	CURB & GUTTER	1
ESMT	EASEMENT	
MS	METAL SIGN	
FO	FIBER OPTIC	
RCP	REINFORCED CONCRETE PIPE	
SAN	SANITARY SEWER	
WM	WATER METER	
DWS	DOMESTIC WATER SERVICE	
UTELE	UNDERGROUND TELEPHONE	
T-UTEL	UNDERGROUND TELEPHONE	
UPOWR	UNDERGROUND POWER	
IRW	IRRIGATION	
IR-COND	CONDUIT	
LPCB	LIGHT POLE CONCRETE BASE	
ETP	ELECTRIC TRANSFORMER	
FPW	FIRE PROTECTION WATER	
UP	UNDERGROUND POWER	
T	TRANSFORMER	



McCLURE™
making lives better.

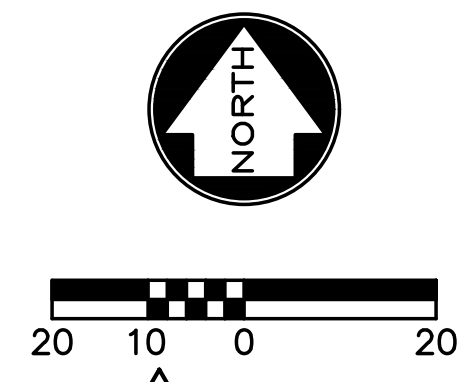
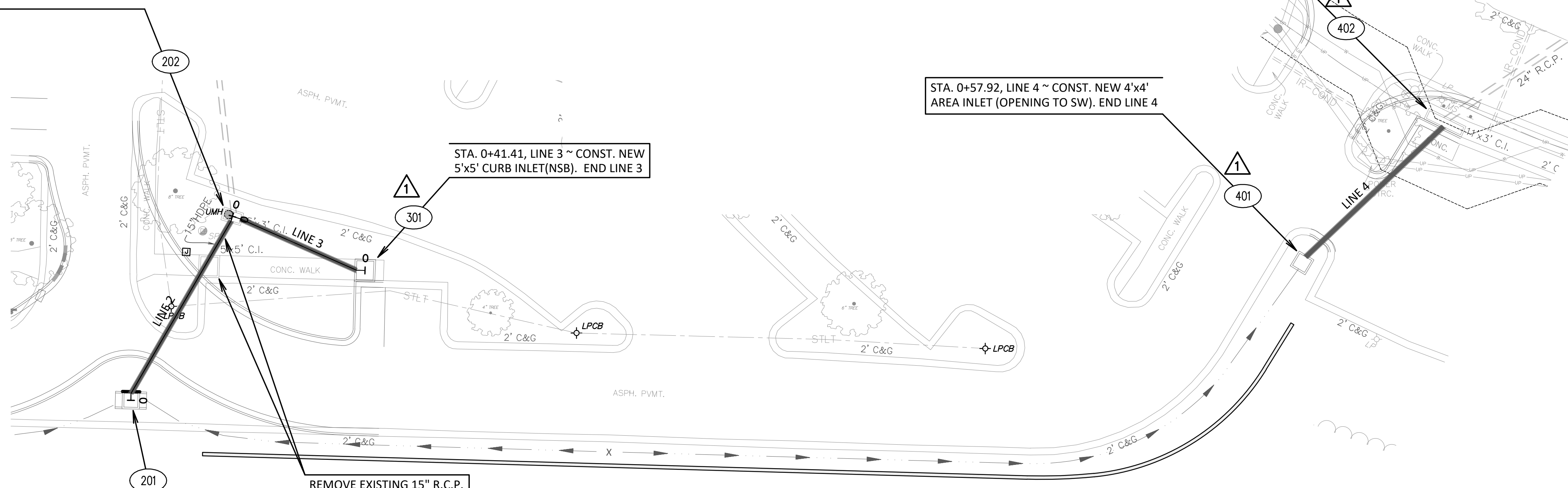
1700 Swift Street, Suite 100
North Kansas City, Missouri 64116
816-756-0444

NOTICE:
McClure Engineering Company waives any and all responsibility and liability for problems which arise from failure to follow these Plans, Specifications, and the engineering intent they convey, or for problems which arise from failure to obtain and/or follow the engineer's guidance with respect to any errors, omissions, inconsistencies, ambiguities, or conflicts which are alleged.

COPYRIGHT:
Copyright and property rights in these documents are expressly reserved by McClure Engineering Company. No reproductions, changes, or copies in any manner shall be made without obtaining prior written consent from McClure Engineering Company.

RELEASE FOR CONSTRUCTION
AS NOTED ON PLANS REVIEW
DEVELOPMENT SERVICES
LEE'S SUMMIT, MISSOURI
04/09/2020

NOTE:
1. "ALL CONSTRUCTION SHALL CONFORM TO THE SPECIFICATIONS SET FORTH BY THE KANSAS CITY CHAPTER OF THE AMERICAN PUBLIC WORKS ASSOCIATION AND THE CITY OF LEE'S SUMMIT, MISSOURI, WHICHEVER IS MORE STRICT."
2. IN AREAS WHERE 18" OF COVER DOES NOT EXIST BETWEEN THE TOP OF PIPE AND EXISTING OR PROPOSED GRADE, COMPACTED FILL SHOULD BE PLACED TO A MINIMUM OF 18" ABOVE THE TOP OF PIPE PRIOR TO INSTALLATION.

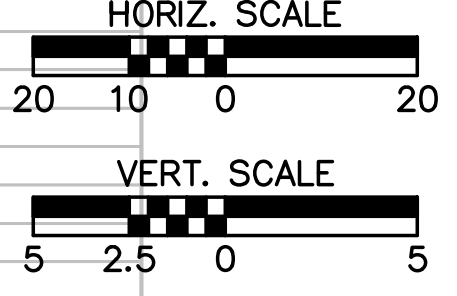
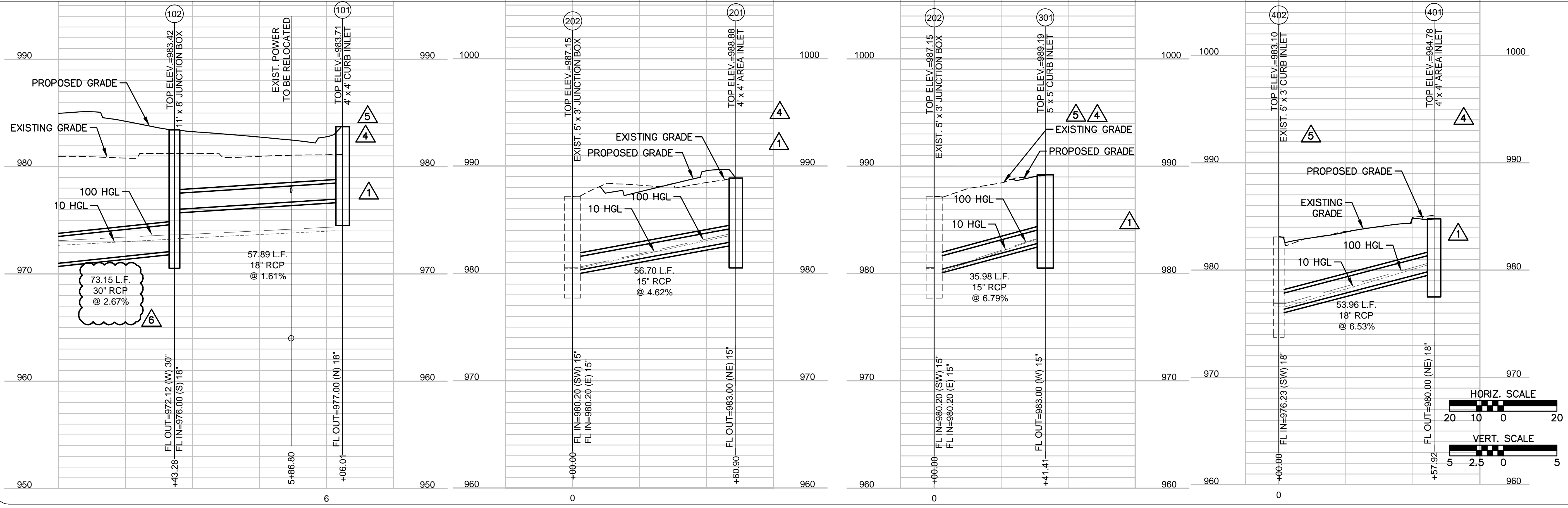


PRIVATE LINE 1

PRIVATE LINE 2

PRIVATE LINE 3

PRIVATE LINE 4



**SAINT LUKE'S FLEX FACILITY EXPANSION PRIVATE
SANITARY SEWER, PRIVATE STORM SEWER &
PUBLIC WATER MAIN IMPROVEMENTS
LEE'S SUMMIT, MISSOURI**
STORM SEWER PLAN & PROFILES (2)



ISSUE DATE: 11-18-2019

REVISIONS	DATE
4 PER OWNER	02-18-2020
5 ESI #1	04-03-2020
6 ESI	04-08-2020

ENGINEER: MVE
DESIGNED BY: KLJ
DRAWN BY: KLJ
CHECKED BY: MVE

McCLURE PROJECT No. 190891-000
SHEET No. **C303**

P:\190891-000\DRAWINGS\CIVIL_SITE UTILITIES\190891-000 STRM P&P2.DWG