

CHAPEL RIDGE BUSINESS PARK

Lots 9BB, 9C, & 9D

SANITARY SEWER CONSTRUCTION PLANS

Part of Section 17, Township 48 North, Range 31 West

LEE'S SUMMIT, JACKSON COUNTY, MISSOURI

CONSTRUCTION AND DESIGN NOTES:

SANITARY SEWERS:

1. SANITARY SEWER PIPE SHALL BE POLY VINYL CHLORIDE (PVC), SDR-26, UNLESS NOTED OTHERWISE IN THESE PLANS.

2. HOUSE SEWER LATERALS SHALL BE 4 INCH PVC, SDR-26. LATERALS SHALL BE CONSTRUCTED USING A TOP ORIENTED "WYE" AT THE SEWER STATION SHOWN IN THESE PLANS. LATERALS SHALL BE LAID AT A GRADE OF 2.0% FROM THE SEWER MAIN TO THE STREET RIGHT-OF-WAY LINE OR EASEMENT LINE AS REPRESENTED BY THE LATERAL LENGTH SHOWN IN THESE PLANS. THE ELEVATION SHOWN FOR THE END OF THE LATERAL IN THESE PLANS IS APPROXIMATE. THE ACTUAL ELEVATION SHALL BE DETERMINED BY THE FLOW LINE ELEVATION OF THE SEWER MAIN, THE FITTINGS AND GRADE OF THE SEWER LATERAL.

3. THE CONTRACTOR SHALL MAINTAIN A LOG OF THE "AS BUILT" STATION AND LENGTH OF EACH HOUSE LATERAL AND SHALL PROVIDE ENGINEERING SOLUTIONS, L.L.C. WITH A COPY OF SAID LOG UPON COMPLETION OF SEWER CONSTRUCTION.

4. ALL MANHOLES INSTALLED IN THE STREET RIGHT-OF-WAY SHALL BE FINISHED 1/2" PER FOOT ABOVE THE NEAREST ADJACENT BACK OF CURB

5. A STAKE SHALL BE PLACED AT THE END OF EACH WYE CONNECTION WITH THE END ELEVATION WRITTEN ON THE STAKE

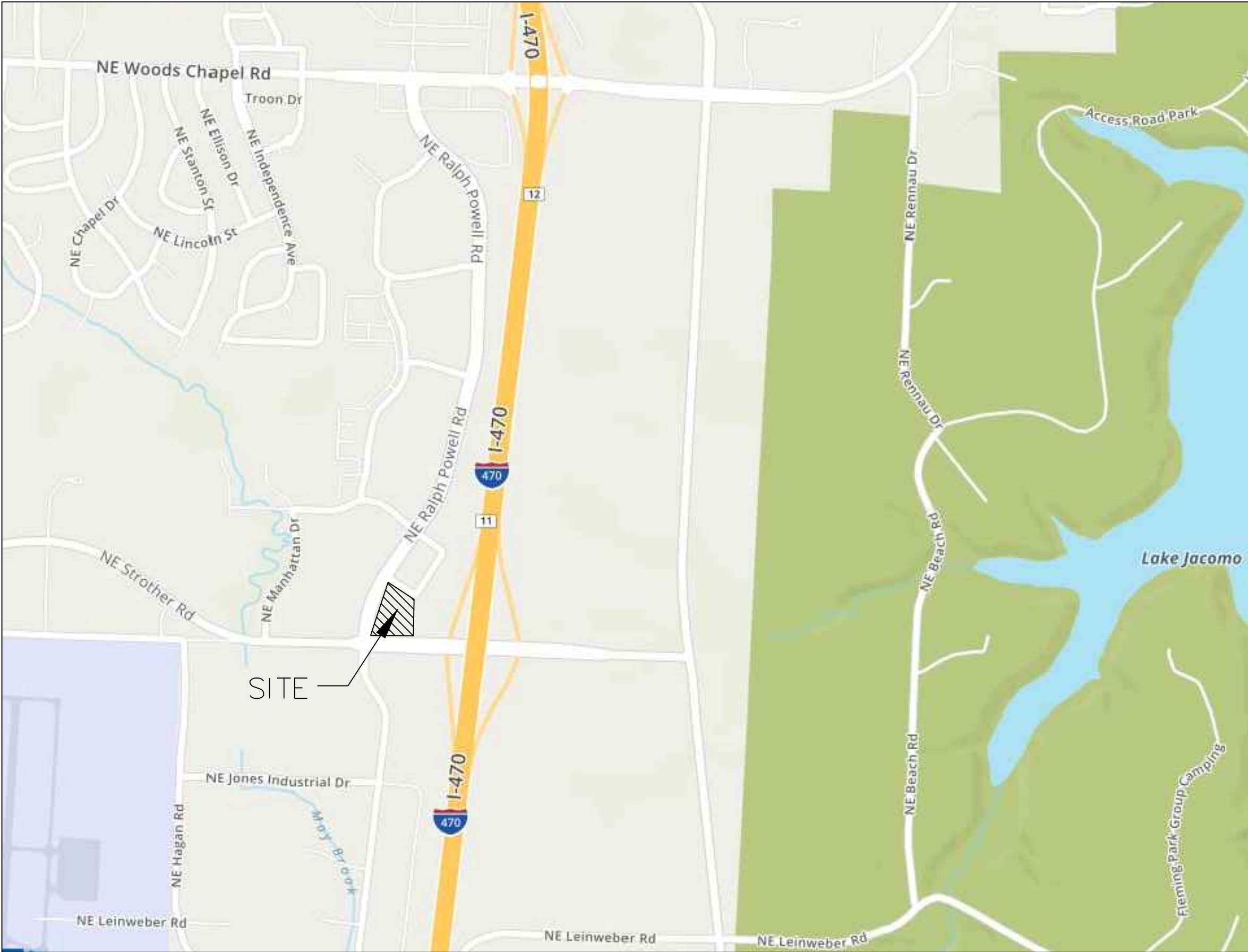
6. FILL AREAS SHALL HAVE 3 FEET OF COMPACTED FILL IN PLACE PRIOR TO TRENCHING

7. A TRENCH CHECK CONSISTING OF FLOWABLE FILL MUST BE INSTALLED ON EVERY PRIVATE LATERAL.

GENERAL NOTE:

1 ~ ALL CONSTRUCTION SHALL CONFORM TO THE CITY OF LEE'S SUMMIT DESIGN AND CONSTRUCTION MANUAL AS ADOPTED BY ORDINANCE 5813.

2 ~ TRENCH CHECKS SHALL BE INSTALL AT ALL SANITARY WYES LOCATION.



UTILITY COMPANIES:

THE FOLLOWING LIST OF UTILITY COMPANIES IS PROVIDED FOR INFORMATION ONLY. WE DO NOT OFFER ANY GUARANTEE OR WARRANTY THAT THIS LIST IS COMPLETE OR ACCURATE. THE CONTRACTOR SHALL BE RESPONSIBLE FOR CONTACTING ALL UTILITY COMPANIES THAT MAY BE AFFECTED BY THE PROPOSED CONSTRUCTION AND VERIFYING THE ACTUAL LOCATION OF EACH UTILITY LINE. THE CONTRACTOR SHALL NOTIFY ENGINEERING SOLUTIONS AT 816.623.9888 OF ANY CONFLICT WITH PROPOSED IMPROVEMENTS.

KCP&L ~ 298-1196
SPIRE ~ 969-2200
SOUTHWESTERN BELL TELEPHONE ~ 761-5011
COMCAST CABLE ~ 795-1100
CITY OF LEE'S SUMMIT PUBLIC WORKS ~ 969-1800
CITY OF LEE'S SUMMIT DEVELOPMENT ENGINEERING INSPECTION AT 816.969.1200
CITY OF LEE'S SUMMIT WATER UTILITIES ~ 969-1900
MISSOURI ONE CALL (DIG RITE) ~ 1-800-344-7483

LEGEND:

B/L - BUILDING SET-BACK
C/A - COMMON AREA
D/E - DRAINAGE EASEMENT
FND. - FOUND
L/E - LANDSCAPE EASEMENT
L.N.A. - LIMITS OF NO ACCESS
R/W - RIGHT OF WAY
SAN - SANITARY SEWER LINE
S/W - SIDEWALK
U/E - UTILITY EASEMENT
W - WATER LINE
ST - STORM SEWER LINE

RELEASE FOR
CONSTRUCTION
AS NOTED ON PLANS REVIEW
DEVELOPMENT SERVICES
LEE'S SUMMIT, MISSOURI

03/31/2020

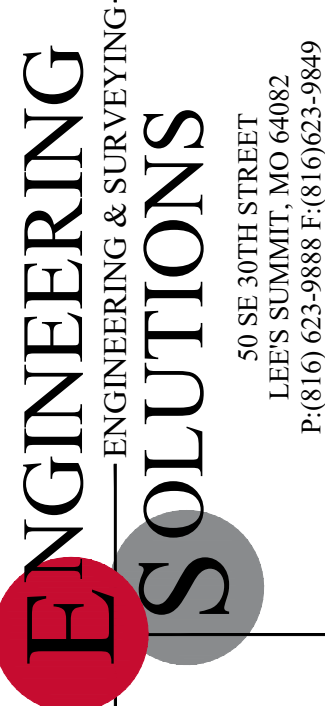
ENGINEER'S CERTIFICATION:

I HEREBY CERTIFY THAT THIS PROJECT HAS BEEN DESIGNED AND THESE PLANS PREPARED IN ACCORDANCE WITH THE CURRENT DESIGN CRITERIA OF THE CITY OF LEE'S SUMMIT, MISSOURI AND THE STATE OF MISSOURI. I FURTHER CERTIFY THAT THESE PLANS WERE DESIGNED IN ACCORDANCE TO AASHTO STANDARDS.

CITY OF LEE'S SUMMIT, MISSOURI

APPROVED: DATE: _____

BY: _____
CITY ENGINEER



Professional Registration
Missouri
Engineering 2005002186-D
Surveying 2005008319-D
Kansas
Engineering E-1695
Surveying LS-218
Oklahoma
Engineering 6284
Nebraska
Engineering CA2821

Chapel Ridge Business Park
A Replat of Lots 9-A, 9-B, & Tract A9
Section 17, Township 48 North, Range 31 West
Lee's Summit, Jackson County, Missouri

Project:
CHAPEL RIDGE LOT
9-C

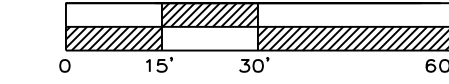
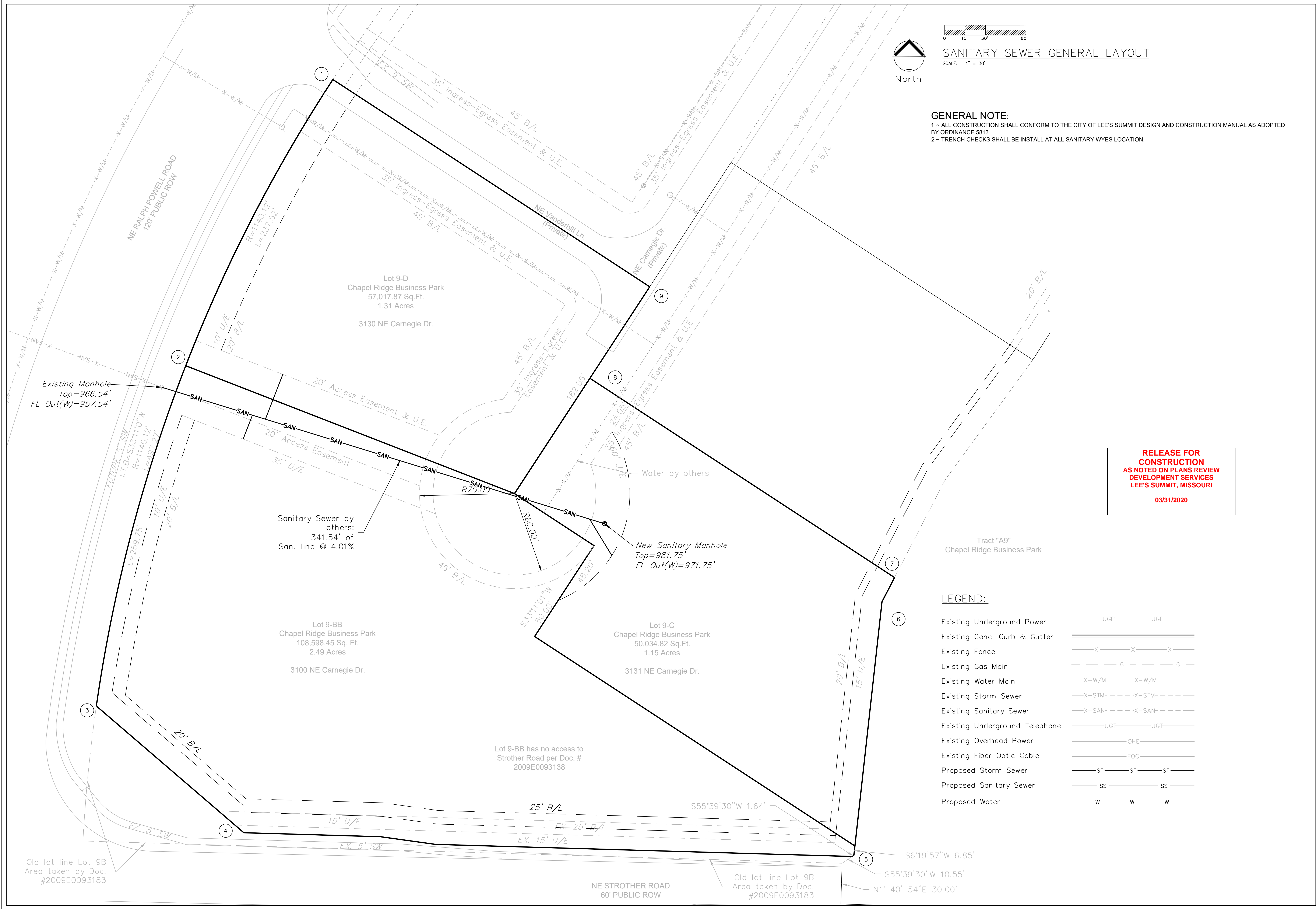
Issue Date:
February 11, 2020

Cover Sheet
Construction Plans for:
Chapel Ridge Business Park
A Replat of Lots 9-A, 9-B, & Tract A9
Section 17, Township 48 North, Range 31 West
Lee's Summit, Jackson County, Missouri

Matthew J. Schlicht
MO PE 2006019708
KS PE 19071
OK PE 25226
NE PE E-14335

REVISIONS

C. 400



SANITARY SEWER GENERAL LAYOUT
SCALE: 1" = 30'

GENERAL NOTE:
1 ~ ALL CONSTRUCTION SHALL CONFORM TO THE CITY OF LEE'S SUMMIT DESIGN AND CONSTRUCTION MANUAL AS ADOPTED BY ORDINANCE 5813.
2 ~ TRENCH CHECKS SHALL BE INSTALL AT ALL SANITARY WYES LOCATION.

RELEASE FOR
CONSTRUCTION
AS NOTED ON PLANS REVIEW
DEVELOPMENT SERVICES
LEE'S SUMMIT, MISSOURI
03/31/2020

LEGEND:

Existing Underground Power	— UGP — UGP —
Existing Conc. Curb & Gutter	=====
Existing Fence	— X — X — X —
Existing Gas Main	— G — G —
Existing Water Main	— X-W/M — X-W/M —
Existing Storm Sewer	— X-STM — X-STM —
Existing Sanitary Sewer	— X-SAN — X-SAN —
Existing Underground Telephone	— UGT — UGT —
Existing Overhead Power	— OHE —
Existing Fiber Optic Cable	— FOC —
Proposed Storm Sewer	— ST — ST — ST —
Proposed Sanitary Sewer	— SS — SS —
Proposed Water	— W — W — W —



Professional Registration
Missouri
Engineering 2005002186-D
Surveying 2005008319-D
Kansas
Engineering E-1695
Surveying LS-218
Oklahoma
Engineering 6254
Nebraska
Engineering CA2821

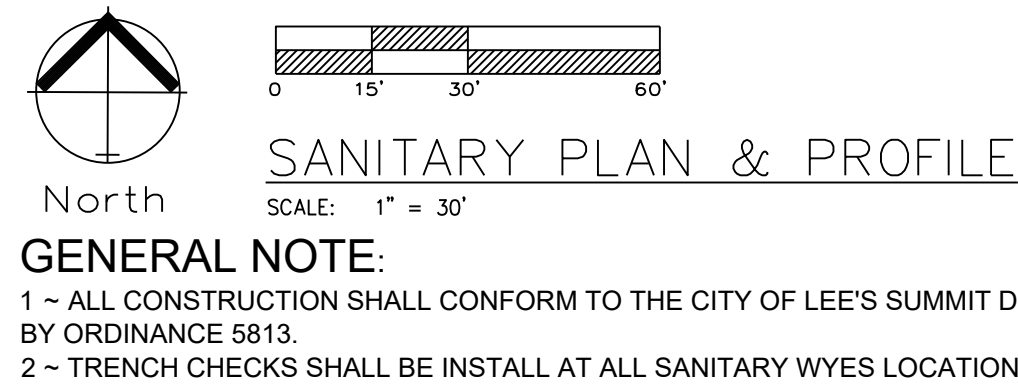
Sanitary Sewer General Layout
Construction Plans for:
Chapel Ridge Business Park
A Replat of Lots 9-A, 9-B, & Tract A9
Section 17, Township 48 North, Range 31 West
Lee's Summit, Jackson County, Missouri

Project:
CHAPEL RIDGE LOT
9-C
Name:
Date:
February 11, 2020

Sanitary Sewer General Layout
Construction Plans for:
Chapel Ridge Business Park
A Replat of Lots 9-A, 9-B, & Tract A9
Section 17, Township 48 North, Range 31 West
Lee's Summit, Jackson County, Missouri

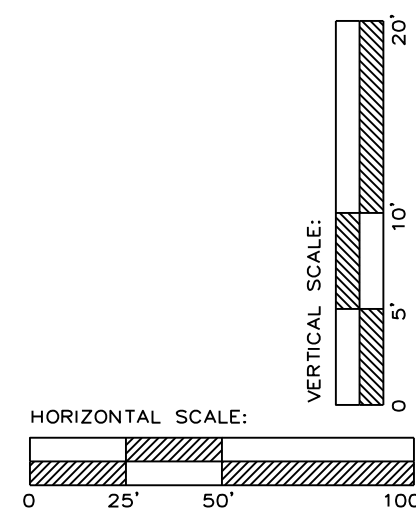
Matthew J. Schlicht
MO PE 2006019708
KS PE 19071
OK PE 25226
NE PE E-14335

REVISIONS



The profile view shows a sewer line with the following details:

- Existing Grade:** Represented by a dashed line.
- FL Pipe:** Represented by a solid line.
- Manhole Elevations:**
 - Station 0+00: Existing Manhole Top = 968.54', FL Out(W) = 957.54', NEW FL In(E) = 958.04'.
 - Station 3+41.54: New Existing Manhole Top = 981.75', FL Out(W) = 971.75'.
- Pipe Specifications:** 341.54' of 8" SDR-26 PVC @ 4.01%.
- Elevation Scale:** The vertical axis ranges from 930 to 1010 feet.
- Horizontal Scale:** The horizontal axis shows stations from 0+00 to 3+00.



**RELEASE FOR
CONSTRUCTION
AS NOTED ON PLANS REVIEW
DEVELOPMENT SERVICES
LEE'S SUMMIT, MISSOURI**

03/31/2020

Professional Registration
Missouri
Engineering 2005002186-D
Surveying 2005008319-D
Kansas
Engineering E-1695
Surveying LS-218
Oklahoma
Engineering 6254
Nebraska
Engineering CA2821

Chapel Ridge Business Park
A Replat of Lots 9-A, 9-B, & Tract A9
Section 17, Township 48 North, Range 31 West
Lee's Summit, Jackson County, Missouri

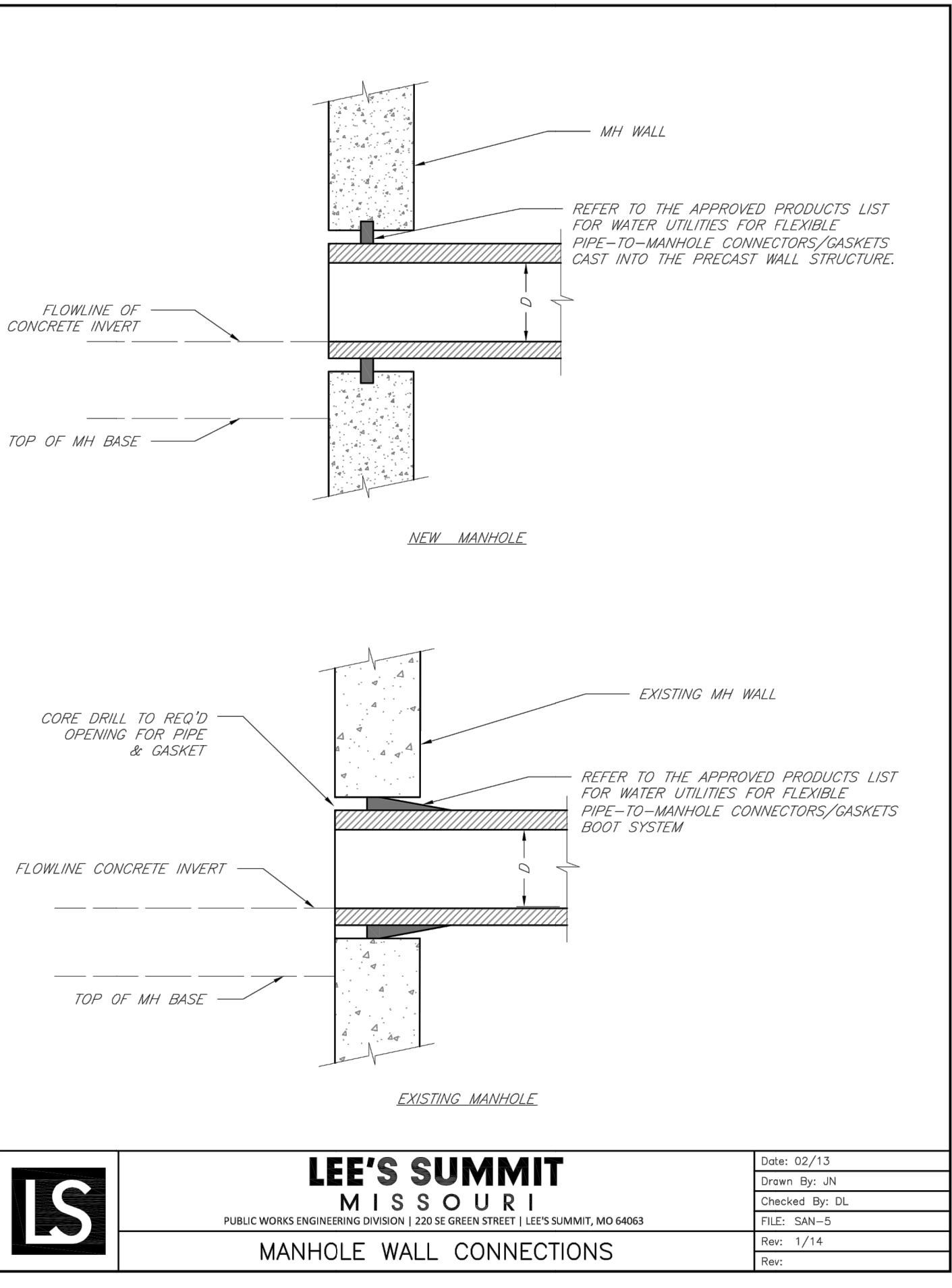
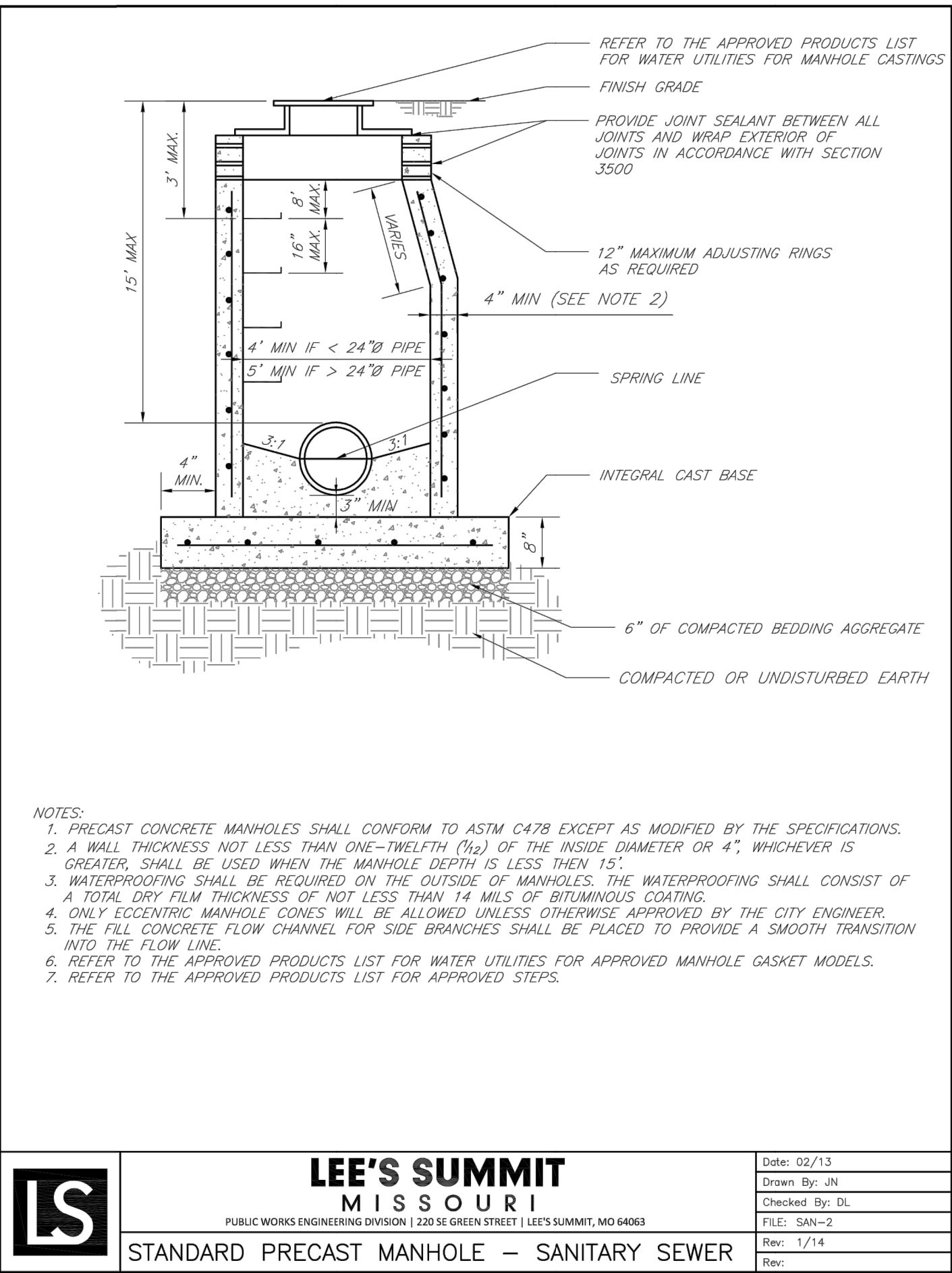
Project: CHAPEL RIDGE LOT
9-C
Issue Date: February 11, 2020

Sanitary Plan and Profile
Construction Plans for:
Chapel Ridge Business Park
A Replat of Lots 9-A, 9-B, & Tract A9
Section 17, Township 48 North, Range 31 West
Lee's Summit, Jackson County, Missouri

Matthew J. Schlicht
MO PE 2006019708
KS PE 19071
OK PE 25226
NE PE E-14335

REVISIONS

REVISIONS



GENERAL NOTE:
1 - ALL CONSTRUCTION SHALL CONFORM TO THE CITY OF LEE'S SUMMIT DESIGN AND CONSTRUCTION MANUAL AS ADOPTED BY ORDINANCE 5813.
2 - TRENCH CHECKS SHALL BE INSTALL AT ALL SANITARY WYES LOCATION.

**RELEASE FOR
CONSTRUCTION
AS NOTED ON PLANS REVIEW
DEVELOPMENT SERVICES
LEE'S SUMMIT, MISSOURI**

03/31/2020