

GENERAL NOTES:

1. ALL WORK SHALL BE PERFORMED IN STRICT CONFORMANCE WITH ALL LAWS, THE A.D.A., ALL CODES, ORDINANCES, RULES AND REGULATIONS OF ALL GOVERNING AUTHORITIES HAVING JURISDICTION.

2. THE CONTRACTOR FOR THE PROJECT SHALL BE RESPONSIBLE FOR OBTAINING ALL REQUIRED PERMITS.

3. BEFORE COMMENCEMENT OF THE WORK, THE GENERAL CONTRACTOR AND HIS SUBCONTRACTORS SHALL FIELD VERIFY ALL EXISTING CONDITIONS AND DIMENSIONS WITH THE CONTRACT DOCUMENTS. ANY DEVIATIONS, DISCREPANCIES, AND/OR CONFLICTS SHALL BE REPORTED TO THE ARCHITECT PRIOR TO PROCEEDING WITH CONSTRUCTION. ANY QUESTION OR CLARIFICATION REGARDING "BUILDING STANDARD" CONSTRUCTION OR MATERIALS SHALL BE DIRECTED TO THE ARCHITECT PRIOR TO PROCEEDING WITH CONSTRUCTION. SHOULD THE CONTRACTOR PROCEED WITHOUT CONTACTING THE ARCHITECT, THE CONTRACTOR MAY, AT NO COST TO THE OWNER, TENANT, THE ARCHITECT, OR THE LIKE, BE REQUIRED TO REPAIR, REPLACE AND CORRECT ANY AND ALL DEFECTS AND PROBLEMS ARISING DUE TO HIS PROCEEDING WITHOUT CONTACT, CLARIFICATION AND/OR RECOMMENDATION.

4. DO NOT SCALE DRAWINGS: DIMENSIONS GOVERN, LARGE SCALE DETAILS GOVERN OVER SMALL SCALE.

A. DRYWALL PARTITIONS ARE DIMENSIONED FROM FACE OF STUD TO FACE OF STUD, UNLESS OTHERWISE NOTED ON PLANS (IE., "FINISH" OR "CLEAR").

B. MASONRY UNITS ARE DIMENSIONED TO ROUGH WALL SURFACE.

C. GLASS SIZES SHOWN ON DRAWINGS ARE NOMINAL. ACTUAL SIZES MAY BE SMALLER. VERIFY WINDOWS AND ROUGH OPENINGS WITH MANUFACTURER PRIOR TO CONSTRUCTION.

5. THE PRESENCE OF THE ARCHITECT OR OWNER'S REPRESENTATIVE ON THE JOB SITE DOES NOT IMPLY CONCURRENCE WITH OR APPROVAL OF THE WORK.

6. UNLESS OTHERWISE SHOWN ON THE DRAWINGS, CONSTRUCTION TECHNIQUES SHALL CONFORM TO ACCEPTED CONSTRUCTION INDUSTRY PRACTICE AND GOVERNING REGULATORY STANDARDS. CONTRACTOR SHALL THOROUGHLY REVIEW THE DRAWINGS AND FIELD CONDITIONS AND NOTIFY THE ARCHITECT OF ANY ERRORS OR CONFLICT BEFORE COMMENCING THE WORK.

7. DIMENSIONS ARE TOP OF FINISH FLOOR, FACE OF CONCRETE OR MASONRY EXCEPT AS OTHERWISE NOTED. DO NOT SCALE DRAWINGS. INTERIOR FRAME WALLS ARE 3-5/8" THICK UNLESS OTHERWISE INDICATED. GYPSUM BOARD SHEATHING IS 5/8" THICK UNLESS OTHERWISE NOTED. ROUGH DOOR JAMB OFFSETS ARE 4" UNLESS OTHERWISE NOTED. ANGLES WHICH APPEAR TO BE 45 DEGREES ARE 50, UNLESS OTHERWISE INDICATED. ITEMS WHICH APPEAR TO BE CENTERED ARE SO, UNLESS OTHERWISE INDICATED.

8. FIXTURES, EQUIPMENT, MILLWORK, HARDWARE, FINISHES WHICH ARE NOT FULLY SPECIFIED IN THE DRAWINGS SHALL BE SUBMITTED TO THE OWNER FOR APPROVAL PRIOR TO THEIR ACQUISITION AND INSTALLATION.

NOTE: THE DRAWINGS ARE FOR THE SOLE USE OF THIS PROJECT EXCLUSIVELY. ANY MEANS TO REPRODUCE, DUPLICATE ANY PORTION, ENABLE DISCLOSURE, OR OTHER USE FOR WHICH IT IS INTENDED TO REPRESENT IS PROHIBITED WITHOUT EXPRESS WRITTEN CONSENT BY THE OWNER.

INTERIOR PARTITION CLEAR SPAN LIMITS

MAXIMUM ALLOWABLE CLEAR SPAN HEIGHT IN FEET FOR NON-LOAD BEARING INTERIOR PARTITIONS:

DESIGN CRITERIA: INTERIOR HORIZONTAL DESIGN LOAD PER BUILDING CODE: 5 PSF WITH ALLOWABLE DEFLECTION OF L/360.  
RUNNER TRACK GAUGE TO MATCH STUD GAUGE. TOP DEFLECTION TRACK GAUGE TO MATCH STUD GAUGE FOR 14 THRU 18 GA, BUT NOT LESS THAN 18 GAUGE FOR 20 GA STUDS

STUD SIZE, FLANGE WIDTH, GAUGE (TRANSLATION TO OLD NOMENCLATURE)	Fy (KSI)	SPACING (O.C.)	5 PSF L/360
600S125-68 (6", 1-1/4" -14 GA)	50	12	26'-10"
600S125-68 (6", 1-1/4" -14 GA)	50	16	26'-2"
600S125-54 (6", 1-1/4" -16 GA)	50	12	26'-10"
600S125-54 (6", 1-1/4" -16 GA)	50	16	24'-5"
600S125-43 (6", 1-1/4" -18 GA)	33	12	25'-1"
600S125-43 (6", 1-1/4" -18 GA)	33	16	22'-10"
600S125-33 (6", 1-1/4" -20 GA)	33	12	22'-10"
600S125-33 (6", 1-1/4" -20 GA)	33	16	20'-9"
600S125-30 (6", 1-1/4" -20 GA)	33	12	22'-0"
600S125-30 (6", 1-1/4" -20 GA)	33	16	20'-0"
362S125-68 (3-5/8", 1-1/4" -14 GA)	50	12	19'-2"
362S125-68 (3-5/8", 1-1/4" -14 GA)	50	16	17'-5"
362S125-54 (3-5/8", 1-1/4" -16 GA)	50	12	17'-11"
362S125-54 (3-5/8", 1-1/4" -16 GA)	50	16	16'-3"
362S125-43 (3-5/8", 1-1/4" -18 GA)	33	12	16'-9"
362S125-43 (3-5/8", 1-1/4" -18 GA)	33	16	15'-3"
362S125-33 (3-5/8", 1-1/4" -20 GA)	33	12	15'-4"
362S125-33 (3-5/8", 1-1/4" -20 GA)	33	16	14'-0"
362S125-30 (3-5/8", 1-1/4" -20 GA)	33	12	14'-10"
362S125-30 (3-5/8", 1-1/4" -20 GA)	33	16	13'-6"

NOTES:

1. CLEAR SPAN HEIGHTS ARE FROM "INTERIOR WALL LIMITING HEIGHTS NON-COMPOSITE" TABLES IN THE STEEL MANUFACTURERS' ASSOCIATION (SSMA) PRODUCT TECHNICAL GUIDE 2012 AND ARE PROVIDED AS A GENERAL GUIDELINE. VERIFY MAXIMUM ALLOWABLE CLEAR SPAN HEIGHTS WITH METAL STUD MANUFACTURER.

2. STUD GAUGE AND O.C. SPACING SHALL BE SELECTED ACCORDING TO THIS CLEAR SPAN HEIGHT SCHEDULE U.N.O.

3. HORIZONTAL BRIDGING IS NOT REQUIRED WHEN GYPSUM WALLBOARD IS INSTALLED FULL HEIGHT ON BOTH SIDES OF PARTITION, BUT HORIZONTAL BRIDGING IS STILL REQUIRED AT 1'-0" BELOW DEFLECTION TRACK IF SLIP CLIPS AT DEFLECTION TRACK ARE NOT PROVIDED.

CODE ANALYSIS:

PROJECT DESCRIPTION:  
COMMERCIAL TENANT IMPROVEMENT WITHIN THE EXISTING STRUCTURE LOCATED AT 340 SOUTHWEST BLUE PARKWAY, LEE'S SUMMIT, MO 64063 TO A GOLF INSTRUCTION FACILITY. PROJECT SCOPE INCLUDES 2,750 SF OF INTERIOR SPACE AND THE CONSTRUCTION OF NEW INTERIOR WALLS, CEILINGS, WALL AND FLOOR COVERINGS AND THE INSTALLATION OF NEW FIXTURES. SCOPE ALSO INCLUDES THE NECESSARY MECHANICAL, PLUMBING AND ELECTRICAL IMPROVEMENTS TO SUPPORT THE NEW USE.

OCCUPANCY DESCRIPTION: THE DEMISED PREMISES OCCUPIED BY GOLFTEC SHALL BE USED FOR THE INSTRUCTION OF GOLF THROUGH THE USE OF PATENTED TECHNOLOGY AND PROFESSIONAL INSTRUCTORS AND FOR THE SALE OF CUSTOM GOLF CLUBS AND GOLF RELATED ITEMS.

BUILDING CODE ANALYSIS:  
  
APPLICABLE CODES  
2018 INTERNATIONAL BUILDING CODE  
2018 INTERNATIONAL PLUMBING CODE  
2018 INTERNATIONAL MECHANICAL CODE  
2018 INTERNATIONAL FUEL GAS CODE  
2018 INTERNATIONAL FIRE CODE  
2018 INTERNATIONAL ENERGY CONSERVATION CODE  
2017 NATIONAL ELECTRICAL CODE  
2017 ACCESSIBLE AND USABLE BUILDINGS AND FACILITIES (ICC/ANSI A117.1)

USE GROUP:  
SHELL BUILDING CONSTRUCTION TYPE:  
TENANT IMPROVEMENT CONSTRUCTION TYPE:  
CLASSIFICATION OF WORK:  
OCCUPANT CONTENT:  
(B) BUSINESS: ACTUAL OCCUPANT LOAD BASED ON 1004.1.2 EXCEPTION = 15 PERSONS

EGRESS WIDTH:  
(# OF PERSONS X 15" PER PERSON = WIDTH  
TOTAL EGRESS WIDTH REQUIRED = 4.05  
TOTAL EGRESS WIDTH PROVIDED =72"

IBC 1006.2.1.1 REQUIRED NUMBERS OF EXITS:  
<50 OCCUPANTS = 1 EXIT REQUIRED, 2 EXITS PROVIDED  
MAX. EXIT ACCESS TRAVEL DISTANCE:  
GROUP B= 75

SPRINKLERED: NO  
IBC TABLE 2902.1  
MINIMUM REQUIREMENT OF REQUIRED PLUMBING FIXTURES:

CLASSIFICATION	WC	LAV	DF	SS
B (BUSINESS)	M	M	1 PER 100	1
REQUIRED	1 PER 500	1 PER 750	1	0"
PROVIDED	UNISEX***	1 UNISEX***		

\*b. FOR BUSINESS AND MERCANTILE OCCUPANCIES WITH AN OCCUPANT LOAD OF 15 OR FEWER, SERVICE SINKS SHALL NOT BE REQUIRED.

IBC 2902.2-SEPERATE FACILITIES

\*\*\* EXCEPTION: SEPARATE FACILITIES SHALL NOT BE REQUIRED IN STRUCTURES OR TENANT SPACES WITH A TOTAL OCCUPANT LOAD, INCLUDING BOTH EMPLOYEES AND CUSTOMERS, OF 15 OR FEWER.

EGRESS PLAN:

RESTROOM  
106

SERVER/STORAGE  
105

COACH  
OFFICE  
104

BAY 3  
103

BAY 2  
102

BAY 1  
101

LOBBY  
100

ADJACENT TENANT SPACE  
(NOT IN SCOPE)

ADJACENT TENANT SPACE  
(NOT IN SCOPE)

ADJACENT TENANT SPACE  
(NOT IN SCOPE)

PROVIDE EXIT SIGNAGE STATING  
"THIS DOOR TO REMAIN UNLOCKED WHEN  
BUSINESS IS OCCUPIED." LETTERS MUST  
BE ONE INCH ON CONTRASTING  
BACKGROUND. VERIFY LOCATION WITH  
FIRE DEPT. REFERENCE 10/A002 FOR  
SIGNAGE PLACEMENT DETAILS

EGRESS PLAN  
1/8" = 1'-0"

ANNOTATIONS AND SYMBOLS

0

COLUMN GRID LINE

1

A101

1

A101

BUILDING SECTION REFERENCE

SECTION NUMBER

DRAWING ON WHICH SECTION IS SHOWN

1

A101

1

A101

WALL SECTION REFERENCE

SECTION NUMBER

DRAWING ON WHICH SECTION IS SHOWN

1

A101

1

A101

DETAIL SECTION REFERENCE

DETAIL NUMBER

DRAWING ON WHICH SECTION IS SHOWN

1

A101

1

A101

DETAIL PLAN REFERENCE

DETAIL NUMBER

DRAWING ON WHICH SECTION IS SHOWN

A101

INTERIOR ELEVATION REFERENCE

ELEVATION NUMBER

DRAWING ON WHICH ELEV IS SHOWN

A101

EXTERIOR ELEVATION REFERENCE

ELEVATION NUMBER

DRAWING ON WHICH ELEV IS SHOWN

GYP BD  
1'-0"  
A.F.F.

CEILING TAG

101TM

DOOR NUMBER

1

KEYNOTE TAG

1i

WALL TYPE TAG  
FLOOR TYPE TAG

Name  
Elevation

VERTICAL ELEVATION MARK

Unit Type  
Room name

ROOM TAG

SPOT ELEVATION

1

View Name  
1/8" = 1'-0"

DRAWING TITLE/REFERENCE

1i

WINDOW TAG

CL

CENTER LINE

REVISION MARK

WALL CONSTRUCTION

DOOR

LEGEND:

---

PATH OF EGRESS TRAVEL

---

TRAVEL DISTANCE START POINT

FE

2A10BC FIRE EXTINGUISHER, LOCATIONS  
TO BE APPROVED BY FIRE DEPT.

#

SHEET TITLE

FOR PERMIT

GENERAL

A001

COVER

A002

ACCESSIBILITY INFORMATION

A003

ADA CLEARANCES

A004

SPECIFICATIONS

A005

WALL AND DOOR SCHEDULES

ARCHITECTURE

A100

DEMO PLAN

A101

FLOOR PLAN

A102

SELECTED CEILING & POWER PLAN

A103

FINISH FLOOR PLAN & SCHEDULES

MECHANICAL

DM101

MECHANICAL DEMO PLAN

M101

MECHANICAL NEW WORK

M601

MECHANICAL DETAILS

MEP101

GENERAL SYMBOLS

PLUMBING

DP101

PLUMBING DEMOLITION

P101

PLUMBING NEW WORK

P601

PLUMBING DETAILS

ELECTRICAL

DE101

ELECTRICAL AND LIGHTING DEMOLITION

E101

ELECTRICAL NEW WORK

E102

ELECTRICAL LIGHTING NEW WORK

E601

ELECTRICAL DETAILS

GOLFTEC<sup>®</sup>

CITY OF LEE'S SUMMIT – DEVELOPMENT SERVICES  
220 SE GREEN  
LEE'S SUMMIT, MO 64063

PROJECT TITLE AND ADDRESS:  
GOLFTEC LEE'S SUMMIT  
340 SW BLUE PARKWAY  
LEE'S SUMMIT, MO 64063

January 7<sup>th</sup>, 2020

To Whom it May Concern,

This letter is in reference to the GOLFTEC Lee's Summit commercial tenant improvement project. GOLFTEC gives private one-on-one golf lessons using advanced technology including video analysis, motion measurement and launch monitors. GOLFTEC also provides custom club fitting services. GOLFTEC Lee's Summit is a commercial tenant improvement to a golf instruction facility. The facility contains 3 hitting bays, a lobby and small office.

The way the GOLFTEC's business works is that clients schedule individual lessons with our staff coaches. These lessons are one-on-one, therefore the maximum amount of people in the training bays at one time is 6 people (3 training bays x 2 (1 coach and 1 client). There is also the possibility that each client could bring a companion with them (in actually this is very rare), adding 4-5 other occupants to the space. That being said, our actual occupancy will most likely never exceed 11 people at one time in the entire space. That is why we believe we do not need to install separate male and female restrooms or a service sink and ask you to consider reducing our occupant load to 15 persons per IBC Section 1004.1.2 Exception for a reduction of the required plumbing fixtures. It is clearly understood that the occupant load reduction would only apply toward plumbing fixture reduction. All other code requirements, including all life-safety and egress requirements, will be based on the full 25 persons occupant load (to note: there is no difference in the life safety requirements for 15 to 28 occupants in the B occupancy per 2018 IBC).

Thank you for the consideration in this matter. Please reach out to the undersigned with any additional questions or for more clarification.

Sincerely,

Katie Guyon

Architect of Record- GOLFTEC  
720-261-5802  
[kguyon@golftec.com](mailto:kguyon@golftec.com)

Joseph L. Assell

GOLFTEC CEO  
J.Assell@Golftec.com

DEFERRED SUBMITTALS:

IF REQUIRED, SPRINKLER CONTRACTOR TO PREPARE SPRINKLER MODIFICATION DRAWINGS AND SUBMIT FOR REVIEW UNDER SEPARATE PERMIT (COORDINATE WITH LANDLORD AS REQUIRED).

IF REQUIRED, FIRE PROTECTION CONTRACTOR TO PREPARE FIRE ALARM MODIFICATION DRAWINGS AND SUBMIT FOR REVIEW UNDER SEPARATE PERMIT (COORDINATE WITH LANDLORD AS REQUIRED).

PROJECT TEAM:

OWNERS:

GOLFTEC  
67 INVERNESS DRIVE EAST, SUITE 175  
ENGLEWOOD, CO 80112

ARCHITECT:

KATHERINE GUYON  
67 INVERNESS DRIVE EAST  
SUITE 175  
ENGLEWOOD, CO 80112  
PHONE: 720-261-5802

MEP ENGINEERS:

SYS-TEK  
255 NW BLUE PARKWAY SUITE 101,  
LEE'S SUMMIT, MO 64063

BUILDING DEPARTMENT:

CITY OF LEE'S SUMMIT - DEVELOPMENT SERVICES  
220 SOUTHEAST GREEN  
LEE'S SUMMIT, MO 64063  
PHONE: 816-969-1200

RELEASE FOR  
CONSTRUCTION  
AS NOTED ON PLANS REVIEW  
DEVELOPMENT SERVICES  
LEE'S SUMMIT, MISSOURI  
03/26/2020

APPROVED

VICINITY MAP:

GOLFTEC<sup>®</sup>

GOLFTEC  
LEE'S SUMMIT

INTERIOR TENANT IMPROVEMENT

340 SOUTHWEST BLUE PARKWAY  
LEE'S SUMMIT, MO 64063

Date:

Issue:

Rev.:

02-03-2020 FOR PERMIT

02-06-2020 RESPONSE TO BUILDING COMMENTS

1

GT PROJECT NO:

GT-461

COVER

A001

2/9/2020 10:08:17 AM







1. CEILING CONDITIONS SHOWN ARE SCHEMATIC AND TYPICAL WALL AND PARTITION TYPES MAY VARY IN RELATION TO THE CEILING TYPES WITH WHICH THEY ARE SHOWN. RE: RCP.
2. STAGGER ALL JOINTS IN GYPSUM WALL BOARD ASSEMBLIES.
3. ALL PIPING SHALL BE PLACED ON THE WARM SIDE OF CHASE WALLS ADJACENT TO UNHEATED SPACES.
4. COMPLETE WALL FINISHES ARE NOT SHOWN ON THIS SHEET, AND WALL FINISHES VARY IN RELATION TO THE PARTITION TYPES WITH WHICH THEY MAY BE SHOWN.
5. AT ALL TILED SURFACES, PROVIDE 5/8" GLASS MESH MORTAR UNITS PER SPECIFICATIONS OF TYPICAL FIRE RATED GWB.
6. WHERE WALL OR FLOOR ASSEMBLIES OF DIFFERING FIRE RESISTANCE RATINGS ADJOIN, MAINTAIN THE INTEGRITY OF THE HIGHER RATED ASSEMBLY CONTINUOUS THROUGH ALL CONCEALED SPACES.
7. PROVIDE LOCKING WHERE REQUIRED AND/OR WHERE SHOWN FOR SECURE ATTACHMENT OF TRIM, RAILINGS, GRAB BARS, CABINETS, DOOR / WINDOW FRAMES, TOILET ACCESSORIES, ETC.
8. MAINTAIN THE INTEGRITY OF RATED PARTITIONS AT INTERSECTION WITH UNRATED PARTITIONS.
9. PROVIDE FIBERGLASS BATTS AT ALL BATHROOM PARTITIONS.



CFS HEADER SCHEDULE (INTERIOR NON-LOAD BEARING WALLS)			
OPENING	HEADER	JAMB	
0'-0" TO 0'-8"	(2) 600S162-33 + (2) STUO DEPTH T150-33	MIN (2) 362S162-33 (16'-0" MAX HGT)	MIN (2) 362S162-33 (20'-0" MAX HGT)
8'-1" TO 10'-0"	(2) 600S162-33 + (2) STUO DEPTH S162-33	MIN (2) 362S162-33 (14'-0" MAX HGT)	MIN (2) 362S162-33 (20'-0" MAX HGT)
10'-1" TO 12'-0"	(2) 1000S162-54 + (2) STUO DEPTH S162-54	MIN (2) 362S162-33 (14'-0" MAX HGT)	MIN (2) 362S162-33 (20'-0" MAX HGT)
12'-1" TO 16'-0"	(2) 1200S162-54 + (2) STUO DEPTH S162-33	MIN (2) 362S162-33 (14'-0" MAX HGT)	MIN (2) 600S162-33 (20'-0" MAX HGT)
16'-1" TO 20'-0"	(3) 1200S162-54 + (2) STUO DEPTH S162-33	MIN (2) 362S162-33 (14'-0" MAX HGT)	MIN (2) 600S162-33 (20'-0" MAX HGT)



## 6 WALL HEAD DETAILS

3A/B INTERIOR PARTITION WALL

2 FURRING AT EXISTING COLUMN

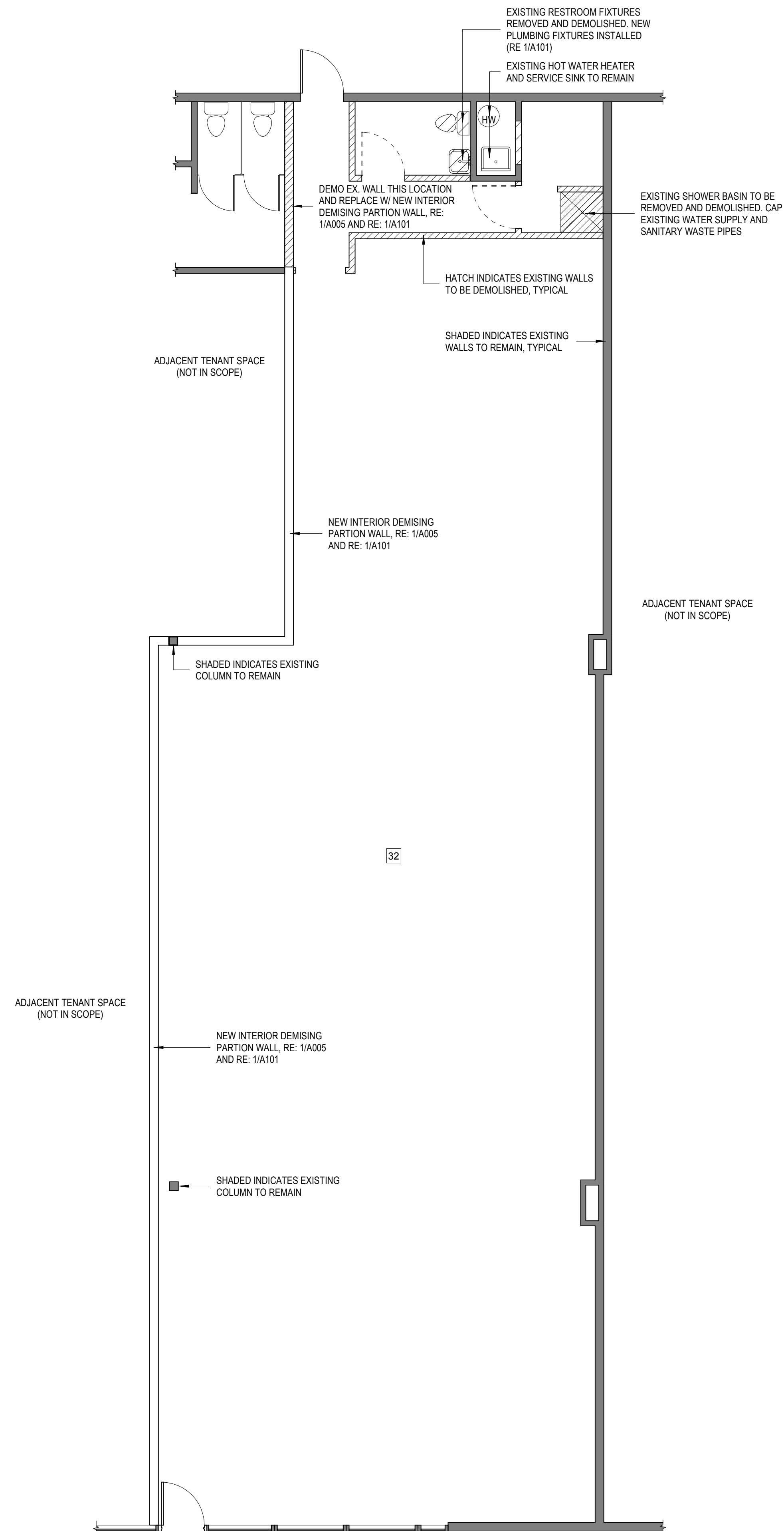
1A EXISTING INTERIOR/EXTERIOR WALL

1 NEW INTERIOR DEMISING PARTITION WALL

NOTE: REFERENCE A001 FOR INTERIOR PARTITION CLEAR SPAN TABLE

 EXISTING WALL  
 NEW WALL  
 WALL TO BE DEMOLISHED  
 DOOR TO BE DEMOLISHED

KEY VALUE	KEYNOTE TEXT
32	DEMO ALL INTERIOR FINISHES



1 DEMO PLAN  
3/16" = 1'-0"

**GOLFTEC**  
EE'S SUMMIT

LEE'S SUMMIT, MO 64063

3/26/2020

[illegible]

T-461

# A100

WALL TYPE LEGEND

EXISTING WALL

NEW WALL

WALL TO BE DEMOLISHED

DOOR TO BE DEMOLISHED

KEYNOTE LEGEND

KEY VALUE	KEYNOTE TEXT
1	PROVIDE ALLOWANCE FOR 4-1/2" CONCRETE CORE DRILLED PUTTING HOLES. COORDINATE REQUIREMENTS AND EXACT LOCATIONS OF PUTTING HOLES WITH GOLFTec. MAINTAIN INTEGRITY OF FLOOR AND RATED ASSEMBLIES
35	(2) 18" DEEP MDF SHELVES TO BE MOUNTED TO WALL @ 82" A.F.F AND 100" A.F.F. DASHED LINE INDICATES EXTENT OF SHELVING
62	FLOAT FLOOR UNDERNEATH LOBBY PUTTING GREEN. CONSULT GOLFTec PM FOR SPECIFICATIONS.
64	PROVIDE BACKER BOARD FOR MOUNTING OF PUTTER RACK. 6" HIGH BY 5'-0" LONG, MOUNTED AT 4" A.F.F.
67	POWER TO BE PROVIDED FOR EXTERIOR SIGNAGE COORDINATE WITH GOLFTec PM
73	PROVIDE FULL HEIGHT BLOCKING AT 18" OFF BACK WALL FOR FUTURE NET INSTALL. 2 x 8 WOOD BLOCKING, TURNED TO RUN BEHIND INTERIOR BAY WALL GYP.

PLUMBING SPECIFICATIONS LEGEND

DRINKING FOUNTAIN ELKAY EZH2O® BOTTLE FILLING STATION. VERSATILE BI-LEVEL EZ COOLER, MODEL: EZSTL8WS

WATER CLOSET: AMERICAN STANDARD 3483.001.020 CADET FLOWISE™ RIGHT HEIGHT™ ELONGATED PRESSURE-ASSISTED TOILET 1.1 GPF / 4.2 LPF

SINK: SCARABEO 3009 WALL MOUNTED BATHROOM SINK

FAUCET: AMERICAN STANDARD; MOMENTS SELECTRONIC ELECTRONIC PROXIMITY LAVATORY FAUCET CAST BRASS SPOUT, BATTERY POWERED

MIRROR: 36" ROUND RECTANGULAR WITH BEVELED EDGES, FAB GLASS AND MIRROR OR EQL

TOILET PAPER DISPENSER: BOBRICK B-2888 TOILET TISSUE DISPENSER, MULTI-ROLL, STAINLESS STEEL

SOAP DISPENSER: BOBRICK B-2111 COMMERCIAL SOAP DISPENSER, STAINLESS STEEL, SURFACE MOUNT

PAPER TOWEL DISPENSER: B-262 CLASSIC SERIES SURFACE-MOUNTED PAPER TOWEL DISPENSER

2 ENLARGED RESTROOM  
1/2" = 1'-0"

3 INTERIOR ELEVATION AT SEE- THROUGH SHAFT WALL  
1/2" = 1'-0"

7 WEST RR ELEVATION  
1/2" = 1'-0"

GENERAL NOTE: PAINT ON WALLS IN BATHROOM TO BE EPOXY BASED

6 SOUTH RR ELEVATION  
1/2" = 1'-0"

5 EAST RR ELEVATION  
1/2" = 1'-0"

4 NORTH RR ELEVATION  
1/2" = 1'-0"

1 OVERALL FLOOR PLAN  
3/16" = 1'-0"

GOLFTec

GOLFTec  
LEE'S SUMMIT

# GOLFTec INTERIOR TENANT IMPROVEMENT

340 SOUTHWEST BLUE PARKWAY  
LEE'S SUMMIT, MO 64063

RELEASE FOR  
CONSTRUCTION  
AS NOTED ON PLANS REVIEW  
DEVELOPMENT SERVICES  
LEE'S SUMMIT, MISSOURI  
03/26/2020

Date: Issue: Rev.:

02-03-2020 FOR PERMIT  
02-06-2020 RESPONSE TO BUILDING COMMENTS 1

GT PROJECT NO: GT-461

FLOOR PLAN

A101

2/9/2020 10:08:19 AM

CENTER LIGHT FIXTURES IN ROOM OR IN CENTER OF CEILING TIE, UNO  
 ALIGN MECHANICAL DIFFUSERS WITH LIGHTING FIXTURES  
 REFER TO ENGINEERING DRAWINGS FOR ADDITIONAL REQUIREMENTS  
 1. ELECTRICAL DEVICES SHALL BE UNLESS OTHERWISE (IF APPLICABLE)  
 ALL POWER AND COMMUNICATION DEVICES ARE TO BE "18" AFF O/C WITH VERTICAL  
 ORIENTATION, UNLESS NOTED OTHERWISE  
 REVIEW ALL THERMOSTAT LOCATIONS WITH ARCHITECT PRIOR TO INSTALLATION  
 REFER TO ENGINEERING DRAWINGS FOR POWER TO PLENUM MOUNTED EQUIPMENT (IF APPLICABLE)  
 FIELD COORDINATE ANY EXISTING DEVICES TO REMAIN AND ANY DEVICES TO BE REMOVED  
 NOT SHOWN HERE.  
 GC TO BE RESPONSIBLE FOR INSTALL OF CORDER PROVIDED HDMI AND VIDEO CABLING  
 2. ALL OUTLET FACILITIES SHALL BE WHITE COLOR  
 1. INSTALL ALL TELEVISIONS PER PLAN LOCATIONS  
 2. VERIFY NECESSARY DATA PLAC PLAN WITH GOLFTEC PM.

VALUE	KEYNOTE TEXT
	<p>PROVIDE 1" CONDUIT RECESSED IN WALL CAVITY FROM J-BOX TO T.V. LOCATION FOR HDMI CABLE. J-BOX TO HAVE MUD-RING AND PLUG STRING</p> <p>PROVIDE 1 1/2" CONDUIT TO SINGLE GANGE JUNCTION BOX IN WALL AT 28" A.F.F. FOR CAMERAS. PROVIDE MUD-RING AND PLUG STRING. RUN CONDUIT 6" ABOVE WALL.</p> <p>PROVIDE CEILING MOUNTED RECEPTACLE AND/OR J-BOX. COORDINATE WITH TENANT ON EXACT LOCATION.</p> <p>LED LIGHTS IN BAYS TO BE ON TWO SEPERATE SWITCHES. NUMBER ON FUTURE CORRELATES TO SWITCH. BOTH SWITCHES TO HAVE DIMMERS.</p> <p>ALPHABETIC/NUMERIC LABEL ON SWITCH INDICATES SWITCH CONTROL. FOR LIGHT FIXTURES WITH CORRESPONDING LABEL U.N.O.</p> <p>INSTALL OWNER PROVIDED HDMI CABLES</p> <p>INSTALL ALL TELEVISIONS PER PLAN. VERIFY EXACT LOCATIONS WITH GOLTFEC PRIOR TO INSTALL.</p> <p>ELECTRICIAN TO PROVIDE PRICING TO OWNER FOR THE EXTENSION OF THE DEMARCATION EXTENSION (DMARC) TO THE SERVER ROOM.</p> <p>PROVIDE CEILING MOUNT RECEPTACLE. RUN 12" or 3/4" CONDUIT DOWN TO 5'-6" A.F.F.. NO BOX NEEDED. COORDINATE WITH TENANT ON EXACT LOCATION.</p> <p>ALL DATA TO BE RUN TO 12-PORT PATCH PANEL IN SERVER ROOM. PATCH PANEL PROVIDED BY G.C.</p> <p>INTERNET CABLE TO RUN BACK TO SERVER. CAMERA CABLE TO RUN FROM DESK TO CAMERAS ONLY.</p> <p>ALL OUTLETS AND SWITCHES TO BE GANGED AS CLOSE TOGETHER AS POSSIBLE. DO NOT SCALE PLANS FOR RECEPTACLE AND SWITCH PLACEMENT.</p> <p>GENERAL CONTRACTOR TO FURNISH AND INSTALL ALL CAT-6 LOW VOLTAGE CABLE, KEYSTONE JACK TERMINATIONS, AND INSTALL OWNER PROVIDED HDMI CABLES.</p> <p>ALL NEW AND EXISTING OUTLETS TO BE POSITIONED/RELOCATED TO BE CLUSTERED TOGETHER 4'-0" OUT BACK WALL.</p> <p>VERIFY NECESSARY OUTLET PLACEMENT AND QUANTITIES WITH GOLTFEC PM JACKETED/SHIELDED RJ45 JUNGLE TO BE USED AT ALL DATA LOCATIONS WITHIN THE BAYS. GROUNDED TO 120V AC. CAMERA LOCATIONS ONLY. FIXTURE VICE RJ45 CAT 6A SHIELDED METAL JACK. CONFORM WITH GOLTFEC PM PRIOR TO ORDER AND INSTALL.</p> <p>POWER TO BE PROVIDED FOR EXTERIOR SIGNAGE.COORDINATE WITH GOLTFEC PM</p>

	LIGHT SWITCH- SINGLE
	LIGHT SWITCH- SINGLE WITH DIMMER
	WALL MOUNTED DUPLEX OUTLET
	WALL MOUNTED JUNCTION BOX
	WALL MOUNTED DATA BOX
	CEILING MOUNTED RECEPTACLE. TENANT TO APPROVE EXACT LOCATION PRIOR TO INSTALL
	GROUND FAULT CIRCUIT INTERRUPTER
	THERMOSTAT- RELOCATE EXISTING



ARMSTRONG ULTIMA OR ARMSTRONG  
DUNE ACOUSTICAL CEILING TILE  
SIZE: 24X48"  
5/8" THICKNESS  
EDGE: SQUARE LAY-IN/16"  
COLOR: WHITE

2x2 LED LIGHT FIXTURE  
MFR: JAMES INDUSTRIES  
MODEL #: SES-SHO6928-LX-75.

6" WALL WASHER DOWNLIGHT  
MFR: MAX LITE  
MODEL #: SES-RR461030W-16

BATHROOM VANITY LIGHT

2x2 LED LIGHT FIXTURE  
MFR: MAX LITE  
MODEL #: TBD

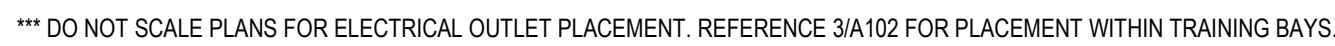
COMBO EMERGENCY EGRESS LIGHT  
AND EXIT SIGN WITH BATTERY BACKUP

EMERGENCY EGRESS LIGHT WITH  
BATTERY BACKUP



ADJACENT TENANT SPACE  
(NOT IN SCOPE)

LIGHTING FIXTURE SCHEDULE	
LIGHT TYPE	FIXTURE COUNT
A	27
C	19
D	1
E	21
TOTAL	68



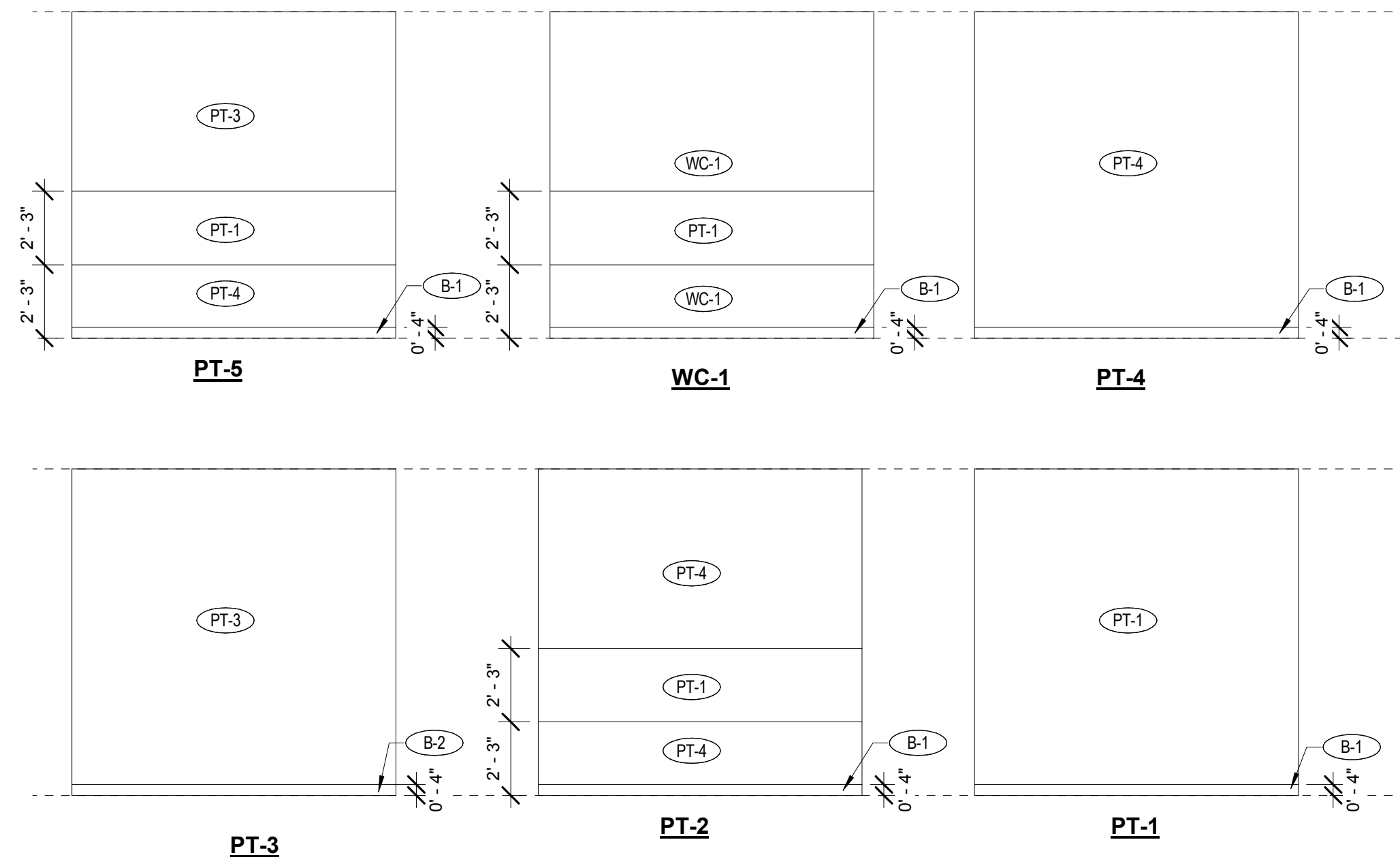
03/26/2020

02-03-2020	FOR PERMIT	
02-06-2020	RESPONSE TO BUILDING COMMENTS	1

RELECTED CEILING & POWER  
PLAN

# A102

1. REFER TO GENERAL NOTES AND SPECIFICATIONS.
2. SPLIT PAINT DOOR FRAMES AS REQUIRED WHERE PAINT COLOR TRANSITIONS OCCUR. PAINT EDGE OF HOLLOW-METAL DOORS TO MATCH OPENING SIDE IF DOOR IS IN WALL WITH DIFFERENT COLORS EACH SIDE.
3. USE SEMI-GLOSS ON ALL PAINTED DOORS AND FRAMES. MATCH COLOR OF ADJACENT WALL.
4. PARTITIONS SHALL RECEIVE ONE COAT OF PRIMER AND TWO COATS OF PAINT, TYP.
5. SKIM COAT ALL SURFACES WHERE REQUIRED FOR A SMOOTH, LEVEL SURFACE PRIOR TO APPLICATION OF NEW FINISH.
6. A SMOOTH LEVEL SURFACE IS NECESSARY PRIOR TO INSTALLATION OF NEW FLOORING.

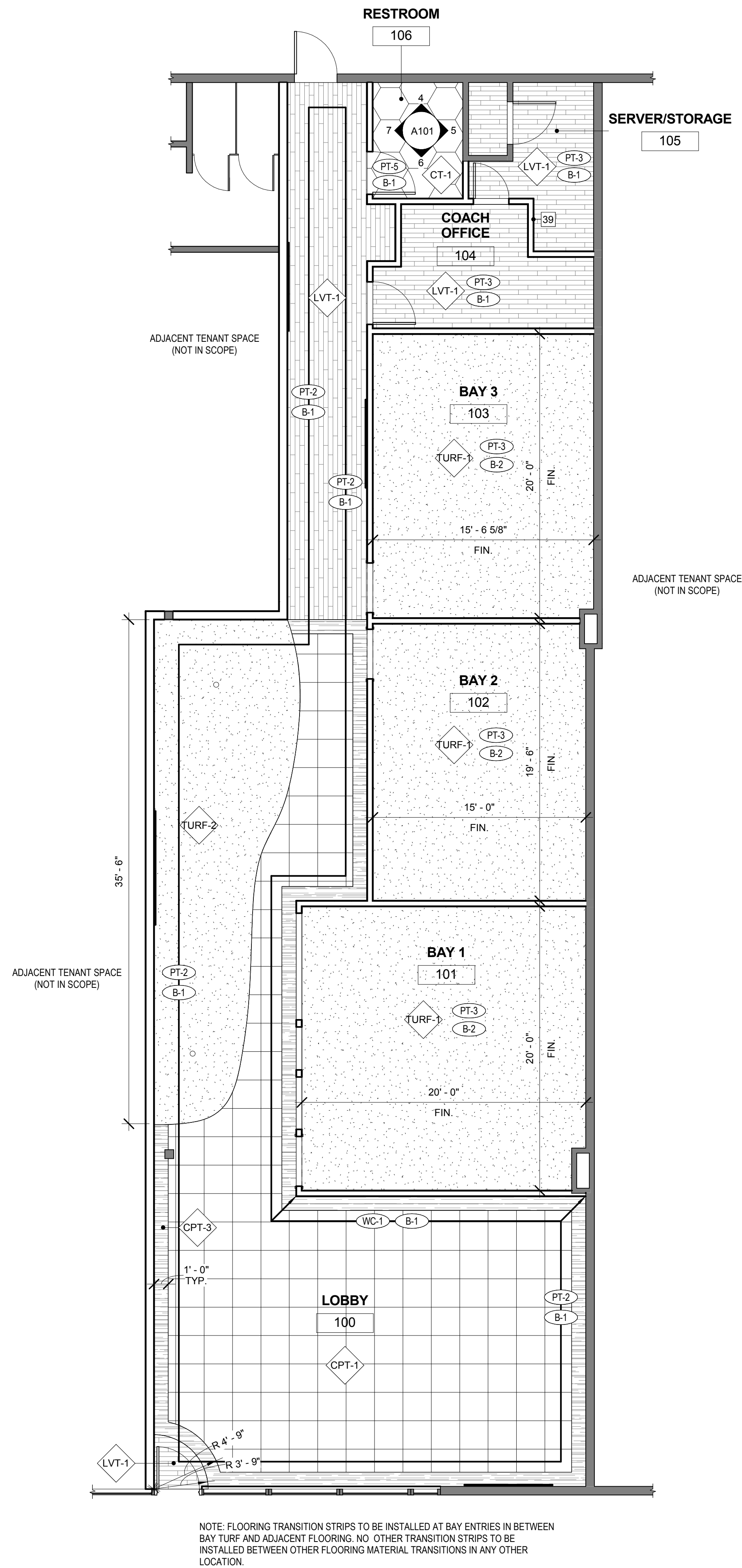


2 TYPICAL WALL PAINT ELEVATIONS (FOR REFERENCE ONLY)  
1/4" = 1'-0"

FLOOR FINISH SCHEDULE						
TAG	MATERIAL	SOURCE AND INSTALL	STYLE	COLOR	CONTACT	NOTES
CPT-1	CARPET TILE	OWNER PROVIDED, G.C. INSTALLED	24"x24" CARPET TILE		CAITLIN MADDEN PH# 678-638-1624	
CPT-3	BORDER CARPET TILE	OWNER PROVIDED, G.C. INSTALLED	24"x24" CARPET TILE		CAITLIN MADDEN PH# 678-638-1624	
CT-1	CERAMIC TILE	OWNER PROVIDED, G.C. INSTALLED	HEXAGON, 20"x24"		CAITLIN MADDEN PH# 678-638-1624	
LVT-1	VINYL TILE	OWNER PROVIDED, G.C. INSTALLED	6"x36" PLANK		CAITLIN MADDEN PH# 678-638-1624	
TURF-1	BAY TURF	OWNER PROVIDED, G.C. INSTALLED		BLACK		
TURF-2	PUTTING GREEN TURF	OWNER PROVIDED, G.C. INSTALLED		GREEN		

WALL FINISH SCHEDULE					
WT	MANUFACTURER	STYLE	COLOR	NOTES	
BAY ENTRY CASING					
6/A005	G.C. PROVIDED; G.C. INSTALLED	CASING AT BAY ENTRIES	CLASSIC OAK SATIN	SEE DETAIL 2/A101	
PAINT					
PT-1	SHERWIN WILLIAMS MATCH OF KWAL PAINT	EGGSHELL	LIME TREE CL 1986A	ACCENT	
PT-2	SHERWIN WILLIAMS MATCH OF KWAL PAINT	EGGSHELL	WESTCHESTER GRAY SW 2849 INSTALLED TO 27" A.F.F.; LIME TREE CL 1986A INSTALLED FROM 27" A.F.F. TO 54" A.F.F.; WESTCHESTER GRAY SW 2849 INSTALLED FROM 54" A.F.F. TO CEILING	STRIPED WALL	
PT-3	SHERWIN WILLIAMS MATCH OF KWAL PAINT	EGGSHELL	OPEN SPACE CLC 1213W	BAY WALLS AND ABOVE TILE IN RESTROOM	
PT-4	SHERWIN WILLIAMS MATCH OF KWAL PAINT	EGGSHELL	WESTCHESTER GRAY SW 2849	ALL SOLID DOOR AND FRAMES TO BE PAINTED PT-4	
PT-5	SHERWIN WILLIAMS MATCH OF KWAL PAINT	EGGSHELL	WESTCHESTER GRAY SW 2849 INSTALLED TO 27" A.F.F.; LIME TREE CL 1986A INSTALLED FROM 27" A.F.F. TO 54" A.F.F.; OPEN SPACE CLC 1213W INSTALLED FROM 54" A.F.F. TO CEILING		
WALL BASE					
B-1	OWNER PROVIDED; G.C. INSTALLED	ROPPE 4" VINYL	SLATE 00580		
B-2	OWNER PROVIDED; G.C. INSTALLED	ROPPE 4" VINYL	BLACK		
WALL COVERING					
WC-1	OWNER PROVIDED; G.C. INSTALLED	WALL PAPER WITH PAINT ACCENT STRIPE	MARLOW RATTAN CD2-MAR-07 INSTALLED TO 27" A.F.F.; LIME TREE CL 1986A INSTALLED FROM 27" A.F.F. TO 54" A.F.F.; MARLOW RATTAN CD2-MAR-07 INSTALLED FROM 54" A.F.F. TO CEILING	WALL TO BE PROPERLY PREPARED BEFORE WALL PAPER IS INSTALLED. FOLLOW MANUFACTURER'S INSTALLATION INSTRUCTIONS. CONTACT GOLFTEC PM WITH QUESTIONS.	



FINISH PLAN  
3/16" = 1'-0"

GENERAL	PIPING/PLUMBING	ELECTRICAL
<p>EQUIPMENT TAG DESIGNATION</p> <p>DRAWING NUMBER SHEET NUMBER</p> <p>SECTION CUT DESIGNATION</p> <p>REFERENCE DESIGNATION</p> <p>CONNECT TO EXISTING</p>	<p><b>VALVES</b></p> <p>ANGLE VALVE</p> <p>BACKFLOW PREVENTER</p> <p>BALL VALVE</p> <p>BALANCING VALVE (2-1/2" &amp; SMALLER)</p> <p>BALANCING VALVE (3" &amp; LARGER)</p> <p>BUTTERFLY VALVE</p> <p>CHECK VALVE (2-1/2" &amp; SMALLER)</p> <p>CHECK VALVE (3" &amp; LARGER)</p> <p>CONTROL VALVE (THREE-WAY, PNEUMATIC)</p> <p>CONTROL VALVE (TWO-WAY, PNEUMATIC)</p> <p>CONTROL VALVE (TWO-WAY, MOTORIZED)</p> <p>CONTROL VALVE (THREE-WAY, MOTORIZED)</p> <p>FLEXIBLE CONNECTION (BELLROWS TYPE)</p> <p>FLEXIBLE CONNECTION (CONVOLUTE TYPE)</p> <p>FLEXIBLE CONNECTION (BRAIDED SS TYPE)</p> <p>GAS COCK</p> <p>GATE VALVE (2-1/2" &amp; SMALLER)</p> <p>GLOBE VALVE (2-1/2" &amp; SMALLER)</p> <p>GLOBE VALVE (3" &amp; LARGER)</p> <p>PLUG VALVE</p> <p>PRESSURE REDUCING VALVE (WATER)</p> <p>PRESSURE RELIEF VALVE</p> <p>SOLENOID VALVE</p> <p>STRAINER (2-1/2" &amp; SMALLER)</p> <p>STRAINER (3" &amp; LARGER)</p> <p>TRIPLE DUTY VALVE</p> <p>STEAM TRAP (INVERTED BUCKET)</p> <p>STEAM TRAP (FLOAT &amp; THERMOSTATIC)</p> <p>PRESSURE REDUCING VALVE (STEAM)</p> <p><b>FITTINGS &amp; ACCESSORIES</b></p> <p>AIR VENT (AUTOMATIC/MANUAL)</p> <p>BLIND FLANGE</p> <p>CAP</p> <p>CLEAN OUT (FLOOR/WALL)</p> <p>CONCENTRIC REDUCER</p> <p>ECCENTRIC REDUCER</p> <p>ELBOW 45°</p> <p>ELBOW 90°</p> <p>ELBOW 90° UP</p> <p>ELBOW 90° DOWN</p> <p>EXISTING PIPING TO REMAIN</p> <p>FLOOR DRAIN</p> <p>HOSE BIBB</p> <p>NEW PIPING</p> <p>PIPE ANCHOR</p> <p>PIPE GUIDE/SLEEVE</p> <p>PIPING TO BE REMOVED</p> <p>PRESSURE GAUGE WITH GAUGE COCK</p> <p>PRESSURE/TEMPERATURE WELL (PETES PLUG)</p> <p>TEE</p> <p>TEE, OUTLET DOWN</p> <p>TEE, OUTLET UP</p> <p>THERMOMETER</p> <p>UNION</p> <p>VALVE IN RISER</p> <p><b>PLUMBING</b></p> <p>COLD WATER PIPING</p> <p>INDUSTRIAL COLD WATER</p> <p>INDIRECT WASTE OR IRRIGATION WATER</p> <p>NON-POTABLE WATER</p> <p>HOT WATER PIPING</p> <p>HOT WATER CIRCULATING PIPING</p> <p>SOFT WATER</p> <p>STORM WATER</p> <p>TREATED WATER</p> <p>TEMPERED WATER SUPPLY</p> <p>TEMPERED WATER RETURN</p> <p>VACUUM</p> <p>VENT</p> <p>WASTE</p> <p><b>PROCESS</b></p> <p>ACETYLENE</p> <p>ACID WASTE</p> <p>ARGON</p> <p>CLEAN IN PLACE SUPPLY PIPING</p> <p>CLEAN IN PLACE RETURN PIPING</p> <p>CLEAN STEAM PIPING</p> <p>DE-IONIZED WATER</p> <p>DISTILLED WATER</p> <p>GASEOUS NITROGEN</p> <p>HELIUM</p> <p>HYDROGEN</p> <p>LIQUID NITROGEN</p> <p>NATURAL GAS</p> <p>NITROUS OXIDE</p> <p>PROCESS COMPRESSED AIR</p> <p>PROPANE</p>	<p><b>POWER</b></p> <p>HOMERUN TO PANELBOARD. NUMBER OF ARROWS INDICATES NUMBER OF CIRCUITS.</p> <p>CONDUIT EXPOSED OR IN CEILING CONSTRUCTION.</p> <p>#12 THHN WIRE IN CONDUIT UNLESS NOTED OTHERWISE. SIZE PER LATEST N.E.C.</p> <p>"J" HOOK RACEWAY MADE FROM 6" ADJUSTABLE PIPE HANGERS (B-LINE MOD. B3690 OR EQUAL) SUPPORTED FROM STRUCTURE BY 5/8" ALL THREAD.</p> <p>GROUND WIRE IN CONDUIT.</p> <p>DISCONNECT SWITCH - UN-FUSED TYPE</p> <p>MOTOR STARTER</p> <p>FUSED DISCONNECT</p> <p>COMBINATION DISCONNECT SWITCH AND MOTOR STARTER.</p> <p>DUPLEX GROUNDING TYPE RECEPTACLE OUTLET - RATED 20-AMP.</p> <p>DUPLEX GROUNDING TYPE RECEPTACLE OUTLET - ON EMERGENCY POWER</p> <p>DOUBLE DUPLEX GROUNDING TYPE RECEPTACLE OUTLET</p> <p>DUPLEX GROUNDING TYPE RECEPTACLE OUTLET WITH WEATHERPROOF COVER.</p> <p>DUPLEX GROUND FAULT INTERRUPTER CIRCUIT TYPE RECEPTACLE OUTLET</p> <p>SIMPLEX 125-V., 2-POLE, 3-WIRE RECEPTACLE OUTLET - WALL OR FLOOR MOUNTED</p> <p>SAME AS ABOVE - EXPLOSION PROOF</p> <p>120-V. SPECIAL RECEPTACLE OUTLET</p> <p>SIMPLEX 208-V., 3-POLE, 4-WIRE RECEPTACLE OUTLET</p> <p>SAME AS ABOVE - EXPLOSION PROOF</p> <p>SIMPLEX 480-V., 3-POLE, 4-WIRE RECEPTACLE OUTLET</p> <p>SAME AS ABOVE - EXPLOSION PROOF</p> <p>JUNCTION BOX</p> <p>12"x18" QUAZITE JUNCTION BOX</p> <p>OUTLET BOX WITH BLANK COVER PLATE</p> <p>CLOCK HANGER OUTLET</p> <p>CONTACTOR</p> <p>TRANSFORMER</p> <p>MOTOR</p> <p>120/208V PANELBOARD</p> <p>277/480V PANELBOARD</p> <p>POKE THROUGH DEVICE FOR POWER</p> <p>POKE THROUGH DEVICE FOR POWER AND DATA</p> <p>POKE THROUGH DEVICE FOR DATA ONLY</p> <p>DUPLEX GROUNDING TYPE RECEPTACLE OUTLET, 15-AMP. TWIST-LOCK NEMA L5-15R ON TOP, AND NEMA 5-15R ON BOTTOM</p> <p>SIMPLEX 208-V., 3-POLE, 4-WIRE, RECEPTACLE OUTLET, SURFACE MOUNT TO FLOOR IN CAST BOX</p> <p>SIMPLEX 208-V., 20-AMP., 3-POLE, 4-WIRE RECEPTACLE OUTLET</p> <p>WEATHER PROOF</p> <p>GROUND FAULT INTERRUPTER</p> <p>EXPLOSION PROOF</p> <p>EMERGENCY STOP SWITCH</p> <p>DEVICE MOUNTED 6" ABOVE ABOVE COUNTER UNLESS NOTED OTHERWISE</p> <p>FLOOR BOX WITH OUTLET INSTALLED FLUSH WITH FLOOR</p> <p><b>SECURITY</b></p> <p>CARD READER</p> <p>DOOR MONITOR</p> <p>MAGNETIC LOCK</p> <p>MOTION SENSOR</p> <p><b>LIGHTING</b></p> <p>24"x48" FLUORESCENT LIGHTING FIXTURE, 'A' INDICATES DESIGNATION ON SCHEDULE</p> <p>SAME AS ABOVE - DUAL SWITCH CONFIGURATION</p> <p>SAME AS ABOVE - CONNECTION TO NIGHT LIGHT CIRCUIT (EMERGENCY POWER)</p> <p>12"x48" FLUORESCENT LIGHTING FIXTURE, 'A' INDICATES DESIGNATION ON SCHEDULE</p> <p>SAME AS ABOVE - CONNECTION TO NIGHT LIGHT CIRCUIT (EMERGENCY POWER)</p> <p>6"x48" TEARDROP FLUORESCENT LIGHTING FIXTURE (PROVIDED BY OTHERS)</p> <p>RECESSED LIGHT FIXTURE</p> <p>GROUND MOUNTED FLOOD</p> <p>GROUND MOUNTED WALL WASHER</p> <p>CEILING MOUNTED EXIT LIGHT (EMERGENCY POWER)</p> <p>WALL MOUNTED EXIT LIGHT (EMERGENCY POWER)</p> <p>WALL MOUNTED FIXTURE</p> <p>POINT SOURCE SURFACE MOUNTED</p> <p>ACCENT WITH DIRECTIONAL ARROW</p> <p>PENDANT FIXTURE, CHAIN OR STEM MOUNTED</p> <p>RECESSED ACCENT OR WALL WASHER</p> <p>BOLLARD TYPE</p> <p>POLE MOUNTED WITH ARM</p> <p>POLE MOUNTED ON TOP</p> <p>LUMINAIRE PROVIDING EMERGENCY ILLUMINATION</p> <p>EMERGENCY LIGHTS</p> <p>SINGLE-POLE, SINGLE-THROW WALL SWITCH</p> <p>TWO-POLE, SINGLE-THROW WALL SWITCH</p> <p>THREE-WAY WALL SWITCH</p> <p>FOUR-WAY WALL SWITCH</p> <p>1500 W. WALL MOUNTED, INCANDESCENT DIMMER SWITCH</p> <p>THREE WAY, 1000 W DIMMER SWITCH (DIMMING AT ALL LOCATIONS SHOWN).</p> <p>PENDANT CABLE SUPPORT</p> <p>PHOTO CELL</p> <p><b>COMMUNICATION</b></p> <p>WALL MOUNTED TELEPHONE OUTLET. FOR WALL INSTALLATION, PROVIDE AND INSTALL A FLUSH DEVICE BOX, AND PULLSTRING IN WALL STUD SPACE TO ABOVE CEILING. MOUNT DEVICE BOX CENTERLINE AT ELEVATION NOTED ON THE PLANS.</p> <p>TRIPLE DATA DEVICE OUTLET. FOR WALL INSTALLATION, PROVIDE AND INSTALL A FLUSH DEVICE BOX, AND PULLSTRING IN WALL STUD SPACE TO ABOVE CEILING. MOUNT DEVICE BOX CENTERLINE AT 17" A.F.F. UNLESS OTHERWISE NOTED.</p> <p>DATA JACK</p> <p>DEVICE MOUNTED 6" ABOVE COUNTER UNLESS NOTED OTHERWISE</p> <p><b>MISCELLANEOUS</b></p> <p>AIR TERMINAL</p> <p>INTERCOM</p> <p>LIGHTNING PROTECTION GROUNDING ELECTRODE</p> <p>LOUDSPEAKER - CEILING MOUNTED</p> <p>LOUDSPEAKER - WALL MOUNTED</p> <p>SIGNALING BELL</p>
DUCTWORK		
<p><b>SYMBOLS</b></p> <p>EXISTING DUCTWORK</p> <p>DUCTWORK TO BE REMOVED</p> <p>NEW DUCTWORK SIZE AS INDICATED</p> <p>90° ELBOW DOWN</p> <p>90° ELBOW UP</p> <p>SOUND ATTENUATOR, SIZE AS INDICATED</p> <p>FLEXIBLE CONNECTION</p> <p>LINED DUCTWORK</p> <p>FLEXIBLE DUCTWORK</p> <p>RECTANGULAR ECCENTRIC DUCT TRANSITION</p> <p>RECTANGULAR CONCENTRIC DUCT TRANSITION</p> <p>SQUARE TO ROUND DUCT TRANSITION</p> <p>SUPPLY AIR</p> <p>RETURN AIR</p> <p>TURNING VANES</p> <p>CONTROL DAMPER</p> <p>BACKDRAFT DAMPER</p> <p>FIRE DAMPER</p> <p>COMBINATION FIRE/SMOKE DAMPER</p> <p>MANUAL VOLUME DAMPER</p> <p>MOTOR OPERATED DAMPER</p> <p>DEVICE</p> <p>WALL MOUNTED DEVICE</p> <p>DUCT MOUNTED SMOKE DETECTOR</p> <p>ACCESS DOOR, SIZE AS INDICATED</p> <p>SUPPLY/EXHAUST AIR DEVICE DESIGNATION</p> <p>RETURN AIR DEVICE DESIGNATION</p> <p>THERMOSTAT</p> <p><b>ABBREVIATIONS</b></p> <p>A.F.F. ABOVE FINISHED FLOOR</p> <p>AHU AIR HANDLING UNIT</p> <p>B.O.D. BOTTOM OF DUCT</p> <p>CL CENTER LINE</p> <p>CFM CUBIC FEET PER MINUTE</p> <p>CD CEILING DIFFUSER</p> <p>DP DIFFERENTIAL PRESSURE</p> <p>RG RETURN GRILLE</p>	<p><b>BUILDING SYSTEMS</b></p> <p>COMPRESSED AIR PIPING</p> <p>CHILLED WATER SUPPLY PIPING</p> <p>CHILLED WATER RETURN PIPING</p> <p>CONDENSER WATER FROM TOWER</p> <p>CONDENSER WATER TO TOWER</p> <p>CONDENSATE DRAIN PIPING</p> <p>DRAIN</p> <p>FUEL OIL SUPPLY</p> <p>FUEL OIL RETURN</p> <p>HEAT PUMP WATER SUPPLY</p> <p>HEAT PUMP WATER RETURN</p> <p>HEATING HOT WATER SUPPLY</p> <p>HEATING HOT WATER RETURN</p> <p>HIGH PRESSURE STEAM</p> <p>HIGH PRESSURE CONDENSATE</p> <p>LOW PRESSURE STEAM</p> <p>LOW PRESSURE CONDENSATE</p> <p>MEDIUM PRESSURE STEAM</p> <p>MEDIUM PRESSURE CONDENSATE</p> <p>NATURAL GAS</p> <p>PUMPED CONDENSATE</p> <p>REFRIGERANT</p> <p><b>FIRE DETECTION</b></p> <p>CEILING MOUNTED SMOKE DETECTOR (NUMBER INDICATES CANDELA RATING). MOUNT DEVICE AT 6'-8" AFF UNLESS OTHERWISE NOTED.</p> <p>WALL-MOUNTED FIRE ALARM HORN (NUMBER INDICATES CANDELA RATING). MOUNT DEVICE AT 6'-8" AFF UNLESS OTHERWISE NOTED.</p> <p>WALL-MOUNTED FIRE ALARM HORN/STROBE (NUMBER INDICATES CANDELA RATING). MOUNT DEVICE AT 6'-8" AFF UNLESS OTHERWISE NOTED.</p> <p>CEILING MOUNTED FIRE ALARM HORN/STROBE (NUMBER INDICATES CANDELA RATING).</p> <p>NURSE CALL SINGLE PATIENT STATION INSTALLED IN PATIENT HEADWALL ABOVE BED.</p> <p>NURSE CALL STAFF STATION WITH VISUAL/AUDIO COMMUNICATION. INSTALL AT WALL HEIGHT ABOVE FINISHED FLOOR TO CENTERLINE OF BOX AS INDICATED ON PLAN</p>	



**GOLFTEC**  
**INTERIOR TENANT IMPROVEMENT**

340 SOUTHWEST BLUE PARKWAY  
LEE'S SUMMIT, MO 64063

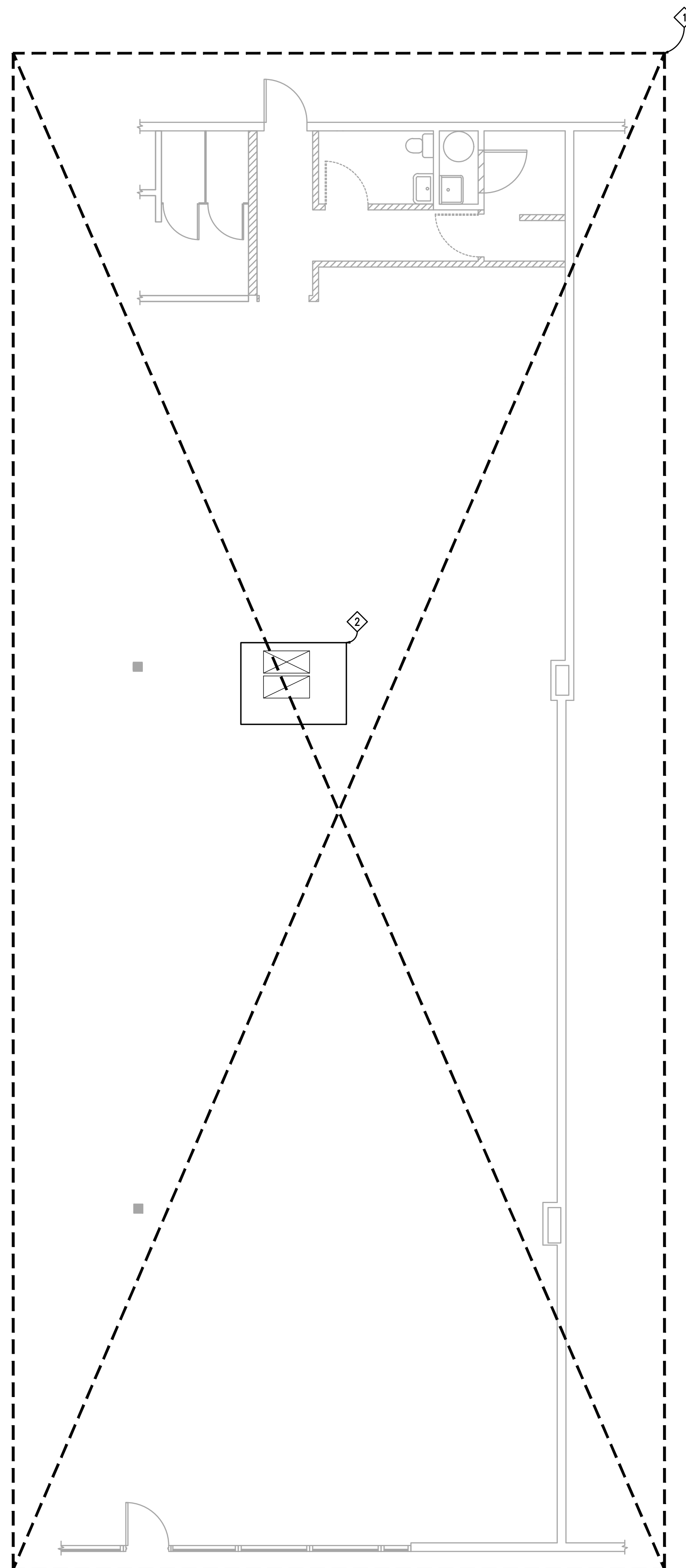
**RELEASE FOR  
CONSTRUCTION  
AS NOTED ON PLANS REVIEW  
DEVELOPMENT SERVICES  
LEE'S SUMMIT, MISSOURI  
03/26/2020**

[illegible]

GT PROJECT NO:	GT-461
MECHANICAL DEMOLITION	

DM101

Wed 8:21-2:06 PM

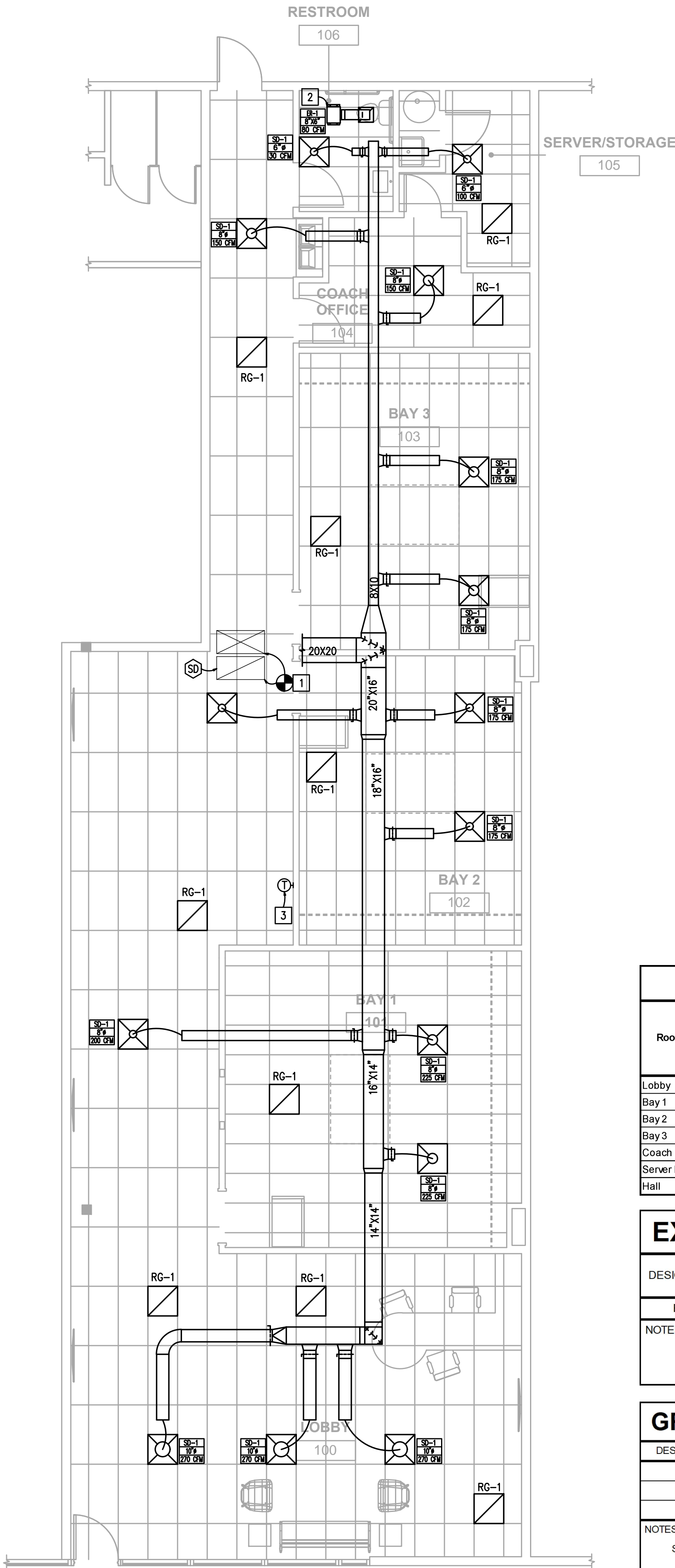


1. PERFORM WORK IN ACCORDANCE WITH THE LATEST EDITIONS, REVISIONS, AMENDMENTS, OR SUPPLEMENTS OF APPLICABLE STATUTES, ORDINANCES, CODES OR REGULATIONS OF FEDERAL, STATE, AND LOCAL AUTHORITIES HAVING JURISDICTION IN EFFECT ON THE DATE BIDS ARE RECEIVED.
2. WHERE APPROVED STANDARDS HAVE BEEN ESTABLISHED BY OSHA, UNDERWRITERS LABORATORIES, AMERICAN CODES, ASA, ASHRAE, ARI, NEC, STATE FIRE INSURANCE REGULATION BODY, NFPA OR THESE STANDARDS SHALL BE FOLLOWED WHETHER OR NOT INDICATED ON THE DRAWING AND SPECIFICATIONS.
3. ALL WORK SHALL COMPLY WITH ALL APPLICABLE CODES.
4. DUCTWORK SHALL BE ACOUSTICALLY LINED WITHIN 20 FT OF INTAKE/DISCHARGE OF A FAN.
5. EXACT LOCATION OF DUCT/ PIPING AND EQUIPMENT SHALL BE COORDINATED WITH BUILDING STRUCTURE, EQUIPMENT FURNISHED, ARCHITECTURAL DRAWINGS AND ALL OTHER TRADES PRIOR TO INSTALLATION. ANY CONTRACTOR INSTALLING WORK WITHOUT PRIOR COORDINATION SHALL RELOCATE HIS WORK AT HIS EXPENSE TO ALLOW PROPER INSTALLATION OF ANY AND ALL TRADES' WORK.
6. SEE ARCHITECTURAL DRAWINGS FOR ADDITIONAL INFORMATION.
7. EXISTING EQUIPMENT LAYOUT IS SCHEMATIC. EXACT LOCATION OF EXISTING DUCT/PIPING AND EQUIPMENT SHALL BE COORDINATED WITH BUILDING STRUCTURE, EQUIPMENT FURNISHED, ARCHITECTURAL DRAWINGS AND ALL OTHER TRADES PRIOR TO DEMOLITION.
8. PATCH AND REPAIR ALL FLOOR AND WALL SURFACES LEFT DAMAGED OR INCOMPLETE FROM REMOVAL OF EXISTING PARTITIONS, MILLWORK, CASEWORK, OR OTHER FIXED ACCESSORIES AND EQUIPMENT WITH MATERIALS TO MATCH EXISTING, AS ACCEPTABLE TO THE ARCHITECT.
9. THE GENERAL CONTRACTOR SHALL COORDINATE THE EXTENT OF THE REQUIRED DEMOLITION OF THE EXISTING BUILDING AS REQUIRED TO FACILITATE THE CONSTRUCTION OF THE PROJECT AS SHOWN AS PART OF THIS WORK.
10. ASBESTOS ABATEMENT: CONTRACTOR SHALL NOTIFY BUILDING REPRESENTATIVE IMMEDIATELY WHEN AND IF ANY ITEMS ARE ENCOUNTERED THAT IN ANY WAY APPEAR TO BE OF A HAZARDOUS NATURE. ASBESTOS ABATEMENT IS NOT PART OF THE SCOPE OF THE DESIGN PROFESSIONALS DOCUMENTATION OR RESPONSIBILITY TO SURVEY, IDENTIFY, OR FOR CONSULTATION OF PROPER DISPOSAL.
11. PROTECT ALL EXISTING WORK WHICH IS TO REMAIN AND RESTORE IN AN APPROVED MANNER ANY SUCH WORK WHICH BECOMES DAMAGED.
12. DEMOLITION CONTRACTOR SHALL BE RESPONSIBLE TO CONTACT BUILDING REPRESENTATIVE TO CLARIFY ANY ITEMS NOT SHOWN ON THESE DOCUMENTS OR SHOWN NOT MATCHING FIELD CONDITIONS.

1. DISCONNECT AND REMOVE ALL UNNECESSARY INTERIOR HVAC IN ENTIRETY BACK TO ROOF PENETRATION. DO NOT REMOVE ROOF PENETRATION. DISCONNECT AND REMOVE ALL DUCTWORK, EXHAUST FANS. COORDINATE EXACT DEMOLITION SCOPE WITH EXISTING CONDITIONS AND NEW WORK REQUIREMENTS. KEEP ANY HEATERS.
2. EXISTING RTU TO REMAIN IN PLACE FOR REUSE, COORDINATE WITH NEW WORK REQUIREMENTS.

**1 FIRST FLOOR MECHANICAL PLAN - DEMOLITION**  
SCALE: 3/16"=1'-0"





1 FIRST FLOOR MECHANICAL PLAN - NEW WORK  
SCALE: 3/16"=1'-0"

### GENERAL NOTES

- PERFORM WORK IN ACCORDANCE WITH THE LATEST EDITIONS, REVISIONS, AMENDMENTS, OR SUPPLEMENTS OF APPLICABLE STATUTES, ORDINANCES, CODES OR REGULATIONS OF FEDERAL, STATE, AND LOCAL AUTHORITIES HAVING JURISDICTION IN EFFECT ON THE DATE BIDS ARE RECEIVED.
- WHERE APPROVED STANDARDS HAVE BEEN ESTABLISHED BY OSHA, UNDERWRITERS LABORATORIES, AMERICAN CODES, ASA, ASHRAE, ARI, NEC, STATE FIRE INSURANCE REGULATION BODY, NFPA OR THESE STANDARDS SHALL BE FOLLOWED WHETHER OR NOT INDICATED ON THE DRAWING AND SPECIFICATIONS.
- ALL WORK SHALL COMPLY WITH ALL APPLICABLE CODES.
- DUCTWORK SHALL BE ACOUSTICALLY LINED WITHIN 20 FT OF INTAKE/DISCHARGE OF A FAN.
- INSTALL VOLUME DAMPERS IN ALL BRANCH DUCTS SERVING A SINGLE GRILLE OR DIFFUSER.
- INSTALL FLEXIBLE DUCT CONNECTIONS AT THE INLET AND DISCHARGE OF ALL FANS.
- MAXIMUM LENGTH OF FLEXIBLE DUCT TO AIR TERMINAL DEVICES SHALL NOT EXCEED 5' - 0" IN LENGTH WITH A MAXIMUM OF ONE 90° TURN AND SHALL BE INSULATED. ELBOWS SHALL BE MIN. 1.5 RADIUS. CONNECTIONS TO TERMINAL DEVICES SHALL BE Banded AND Taped.
- DUCT/PIPING LAYOUT IS SCHEMATIC. EXACT LOCATION OF DUCT/ PIPING AND EQUIPMENT SHALL BE COORDINATED WITH BUILDING STRUCTURE, EQUIPMENT FURNISHED, ARCHITECTURAL DRAWINGS AND ALL OTHER TRADES PRIOR TO INSTALLATION. ANY CONTRACTOR INSTALLING WORK WITHOUT PRIOR COORDINATION SHALL RELOCATE HIS WORK AT HIS EXPENSE TO ALLOW PROPER INSTALLATION OF ANY AND ALL TRADES' WORK.
- UNLESS OTHERWISE NOTED, ALL DUCT / PIPING SHALL BE CONCEALED WHEREVER POSSIBLE. PROVIDE CHROME ESCUTCHEON OR ALUMINUM DUCT COLLAR AT EACH PENETRATION OF A FINISHED SURFACE.
- DUCT SIZES SHOWN ARE NET INSIDE CLEAR DIMENSIONS.
- ANY ADDITIONAL LOW VOLTAGE CONTROL WIRING THAT IS REQUIRED SHALL BE PROVIDED BY THE HVAC CONTRACTOR. CONTROL WIRING SHALL BE RUN IN CONDUIT IF REQUIRED BY LOCAL CODES. FIELD VERIFY PRIOR TO BID. POWER WIRING SHALL BE PROVIDED BY THE ELECTRICAL CONTRACTOR.
- PROVIDE VIBRATION ISOLATION AT EACH CONNECTION TO A MOTORIZED PIECE OF EQUIPMENT BY THE HVAC CONTRACTOR.
- THE HVAC CONTRACTOR SHALL CLOSELY COORDINATE AIR DEVICE AND DUCTWORK LOCATIONS WITH REFLECTED CEILING AND STRUCTURAL PLANS.
- MATERIALS IN THE PLENUM SHALL BE MADE OF NONCOMBUSTIBLE MATERIALS OR MATERIALS HAVING A FLAME SPREAD INDEX OF NOT MORE THAN 25 AND A SMOKE-DEVELOPED INDEX OF NOT MORE THAN 50 WHEN TESTED IN ACCORDANCE WITH ASTM E84 OR UL 723. SEE IMC FOR EXCEPTIONS.

### MECHANICAL NEW WORK NOTES

- EXTEND NEW SUPPLY AND RETURN DUCTWORK TO FULL SIZE DUCT DROPS FROM EXISTING RTU IN THE MOST EFFICIENT MANNER. PROVIDE TRANSITIONS AS REQUIRED FOR TIE-IN. COORDINATE EXACT TIE-IN LOCATION WITH EXISTING FIELD CONDITIONS. BALANCE EXISTING ROOFTOP UNIT TO SUPPLY AIR, OUTSIDE AIR, AND RETURN AIR CFM AS INDICATED ON PLANS. INSTALL NEW DUCT SMOKE-DETECTOR (PROVIDED AND WIRED BY ELECTRICAL CONTRACTOR) IN RETURN DUCT DROP.
- PROVIDE NEW CEILING EXHAUST FAN EF-1, GREENHECK SP-A110 OR EQUAL, 80 CFM. COORDINATE WITH ELECTRICAL CONTRACTOR, ELECTRICAL CONTRACTOR SHALL INTERLOCK EXHAUST FAN WITH TOILET ROOM LIGHT. EXHAUST FAN TO EVACUATE INTO PLENUM.
- RELOCATE EXISTING THERMOSTAT TO LOCATION SHOWN. INSTALL AT 4'-0" ABOVE FINISHED FLOOR. COORDINATE EXACT LOCATION AND SET POINTS WITH OWNER.

### VENTILATION CALCULATIONS ASHRAE 62.1 COMPLIANCE

Room #	Zone Type	Zone Area	R <sub>p</sub>	Occupant Density per 1000 ft <sup>2</sup>	P <sub>z</sub>	R <sub>a</sub>	A <sub>z</sub>	V <sub>bz</sub>	V <sub>oz</sub>	E <sub>z</sub>	TOTAL REQUIRED OA CFM	TOTAL DESIGN OA CFM
Lobby	Main Entry Lobbies	1,133	5	10	11.33	0.06	1,133	124.63	124.63	1	414	450
Bay 1	Health club/weight rooms	397	20	10	3.97	0.06	397	103.22	103.22	1		
Bay 2	Health club/weight rooms	292	20	10	2.92	0.06	292	75.92	75.92	1		
Bay 3	Health club/weight rooms	310	20	10	3.1	0.06	310	80.6	80.6	1		
Coach Office	Office Space	110	5	5	0.55	0.06	110	9.35	9.35	1		
Server Room	Computer (Not Printing)	88	5	4	0.352	0.06	88	7.04	7.04	1		
Hall	Corridors	220	0	0	0	0.06	220	13.2	13.2	1		

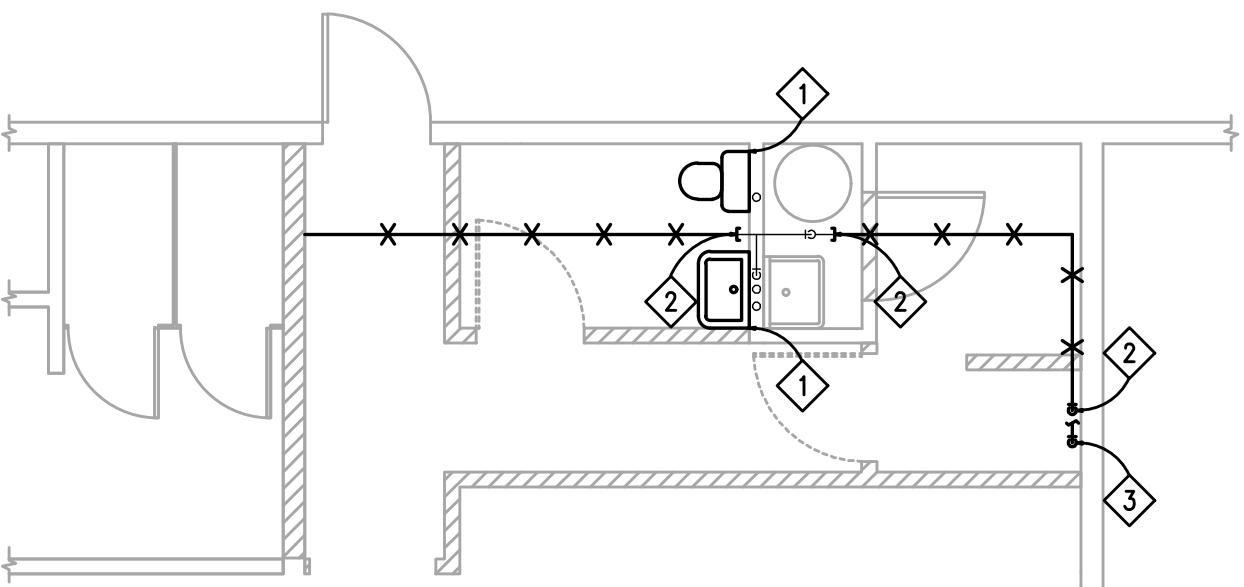
### EXHAUST FAN SCHEDULE

DESIGNATION	MANUFACTURER	MODEL No.	CFM	ESTIMATED EXT. S.P. (IN. W.C.)	MOTOR DATA			NOTES
					VOLTS	PHASE	DRIVE	
EF-1	GREENHECK	SP-A110	80	0.25	115	1	DIRECT	
NOTES								

### GRILLE, REGISTER, AND DIFFUSER SCHEDULE

DESIGNATION	MANUFACTURER	MODEL No.	NECK SIZE	FACE SIZE	NOTES
SD-1	Titus	TMS	SEE PLANS	24"X24"	1
RG-1	Titus	45F	N/A	22"X22"	1
ER-1	Titus	25RL	SEE PLANS	12"X12"	1
NOTES					
SIZE AND CFM ARE SHOWN ON PLANS					





1. CONTRACTOR TO VERIFY EXISTING CONDITIONS FOR HOT AND COLD WATER PIPING.

1. CONTRACTOR TO VERIFY EXISTING CONDITIONS FOR HOT AND COLD WATER PIPING.

1 DEMO EXISTING SINK AND TOILET CAP PIPING FOR FUTURE FIXTURES' USE.

- 2 DEMO AND CAP EXISTING HOT WATER LINES EXTENDING TO SHOWER AND ADJACENT TENANT SPACE. THE EXISTING HOT WATER HEATER IS TO REMAIN IN PLACE.

- 3 DEMO EXISTING COLD WATER LINE TO SHOWER CAP AT COLD WATER MAIN.

SCALE: 3/16"=1'-0"



LEE'S SUMMIT

JOE ASSELL  
303-779-9900

**GOLFTEC**  
**INTERIOR TENANT IMPROVEMENT**  
340 SOUTHWEST BLUE PARKWAY

LEE'S SUMMIT, MO 64063

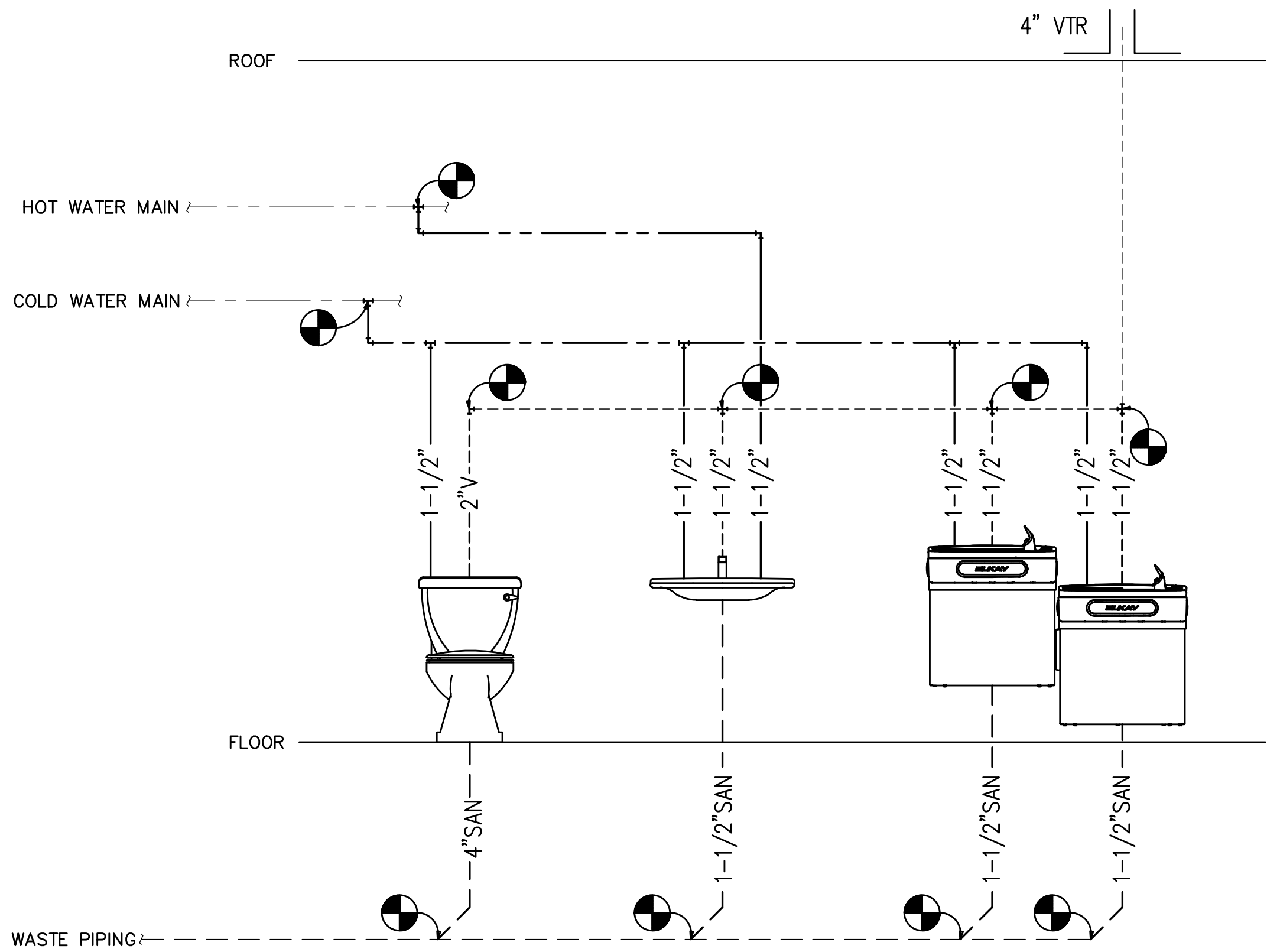
03/26/2020

[illegible]

GT PROJECT NO: GT-461

PLUMBING DEMOLITION

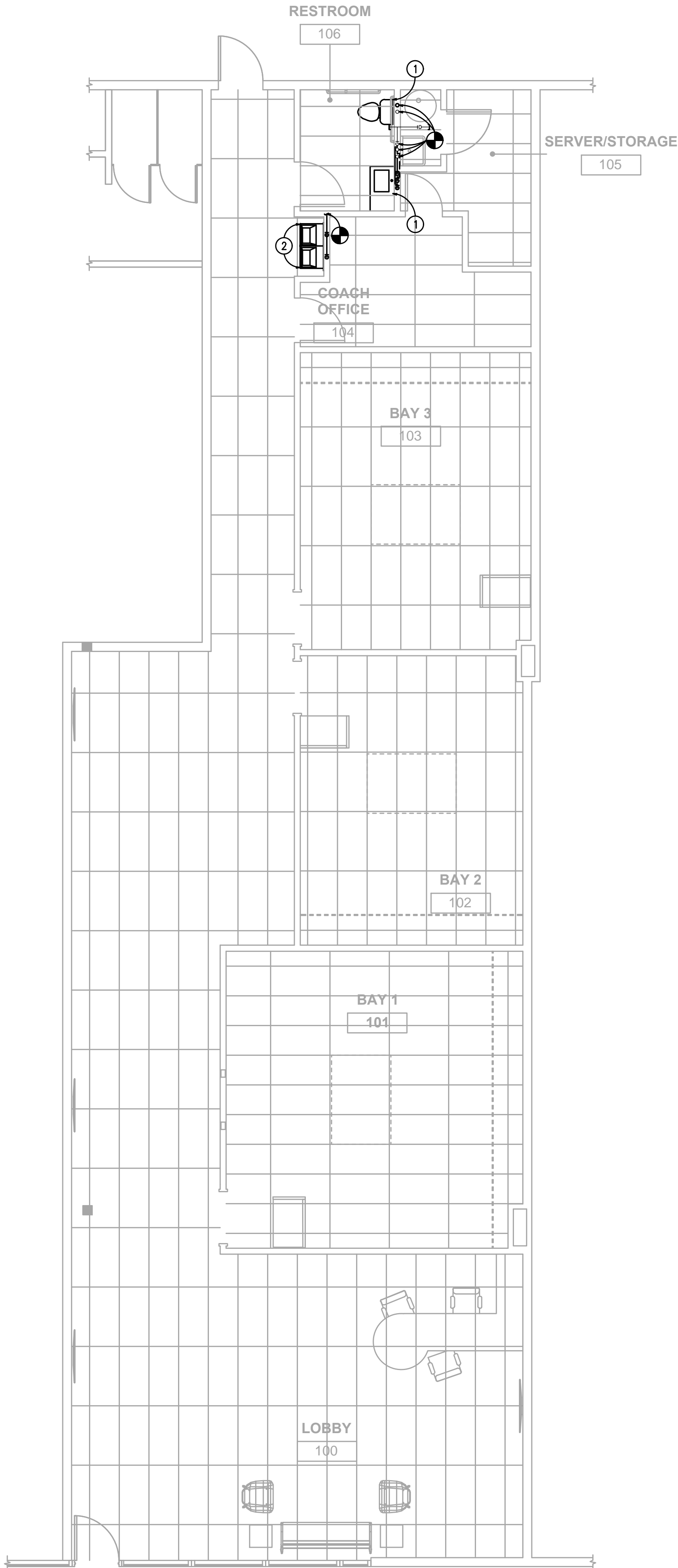
DP101



2 PLUMBING RISER NEW WORK  
SCALE: N.T.S.

PLUMBING FIXTURE SCHEDULE									
TAG	DESCRIPTION	MANUFACTURER	MODEL	MODEL NUMBER	CONN. PIPE SIZE (IN.)				REMARKS
					CW	HW	WASTE	VENT	
EWC	WATER COOLER	ELKAY	—	EZSTLWLSK	3/8"	—	1 1/2"	1 1/2"	REFRIGERATED 8-GPH TWO-STATION HI/LOW, ADA-COMPLIANT, LIGHT GRAY GRANITE COLOR, 115V, 370W
LAV	LAVATORY	AMERICAN STANDARD	—	2506.155	3/8"	3/8"	1-1/2"	1 1/2"	WHITE CERAMIC WITH INTEGRATED COUNTER, SINGLE HOLE, WALL HUNG, AMERICAN STANDARD 2506.155 FAUCET, 0.5GPM AERATOR, DC BATTERY POWERED, CAST BRASS SPOUT, <25% LEAD, 4" HOLES, WITH CHROME-PLATED CAST BRASS GRID DRAIN, ASSE 1070 MIXING VALVE SET TO 110°F
WC	WATER CLOSET	AMERICAN STANDARD	—	3483.001.020	3/8"	—	4"	2"	ELONGATED, WHITE TWO-PIECE, 1.1 GPF FLUSH TANK PRESSURE-ASSIST, ADA COMPLIANT, 1955SSCPT BEMIS OPEN-FRONT SEAT, CONTRACTOR TO PROVIDE WC TANK AMERICAN STANDARD 4142.100.020

1 FIRST FLOOR PLUMBING PLAN - NEW WORK  
SCALE: 3/16"=1'-0"



## GENERAL NOTES

- PERFORM WORK IN ACCORDANCE WITH THE LATEST EDITIONS, REVISIONS, AMENDMENTS, OR SUPPLEMENTS OF APPLICABLE STATUTES, ORDINANCES, CODES OR REGULATIONS OF FEDERAL, STATE, AND LOCAL AUTHORITIES HAVING JURISDICTION IN EFFECT ON THE DATE BIDS ARE RECEIVED.
- WHERE APPROVED STANDARDS HAVE BEEN ESTABLISHED BY OSHA, UNDERWRITERS LABORATORIES, AMERICAN CODES, ASA, ASHRAE, ARI, NEC, STATE FIRE INSURANCE REGULATION BODY, NFPA OR THESE STANDARDS SHALL BE FOLLOWED WHETHER OR NOT INDICATED ON THE DRAWING AND SPECIFICATIONS.
- ALL WORK SHALL COMPLY WITH ALL APPLICABLE CODES.
- PIPING LAYOUT IS SCHEMATIC. EXACT LOCATION OF PIPING AND EQUIPMENT SHALL BE COORDINATED WITH BUILDING STRUCTURE, EQUIPMENT FURNISHED, ARCHITECTURAL DRAWINGS AND ALL OTHER TRADES PRIOR TO INSTALLATION. ANY CONTRACTOR INSTALLING WORK WITHOUT PRIOR COORDINATION SHALL RELOCATE HIS WORK AT HIS EXPENSE TO ALLOW PROPER INSTALLATION OF ANY AND ALL TRADES' WORK.
- UNLESS OTHERWISE NOTED, ALL PIPING SHALL BE CONCEALED WHEREVER POSSIBLE. PROVIDE CHROME ESCUTCHEON OR ALUMINUM DUCT COLLAR AT EACH PENETRATION OF A FINISHED SURFACE.
- CONTRACTOR TO VERIFY EXISTING CONDITIONS FOR ALL PIPING.
- COORDINATE ALL PLUMBING FIXTURES WITH OWNER.
- ALL PIPING IS TO BE ROUTED IN THE MOST EFFICIENT MANNER POSSIBLE.
- MATERIALS IN THE PLENUM SHALL BE MADE OF NONCOMBUSTIBLE MATERIALS OR MATERIALS HAVING A FLAME SPREAD INDEX OF NOT MORE THAN 25 AND A SMOKE-DEVELOPED INDEX OF NOT MORE THAN 50 WHEN TESTED IN ACCORDANCE WITH ASTM E84 OR UL 723. SEE IMC FOR EXCEPTIONS.

## PLUMBING NEW WORK NOTES

- PROVIDE AND INSTALL NEW FAUCET AND TOILET. TOILET FLUSH CONTROL SHALL BE LOCATED ON THE OPEN SIDE OF THE WATER CLOSET. CONNECT NEW TOILET TO EXISTING COLD WATER AND WASTE LINES AT LOCATION OF PREVIOUS TOILET. CONNECT NEW FAUCET TO EXISTING COLD WATER, HOT WATER, AND WASTE LINES AT LOCATION OF PREVIOUS SINK. ROUTE NEW VENTS LINES TO EXISTING VENT MAIN.
- PROVIDE AND INSTALL NEW WATER FOUNTAIN. ROUTE NEW COLD WATER PIPING TO EXISTING COLD WATER MAIN AND NEW VENT LINES TO EXISTING VENT MAIN. CONTRACTOR TO VERIFY ROUTE AND LOCATION OF NEAREST COLD WATER PIPING.

SECTION 22 0000- PLUMBING  
THE REQUIREMENTS OF THE "GENERAL CONDITIONS" AND "DIVISION 1" SECTIONS OF THE SPECIFICATIONS SHALL APPLY TO THIS SECTION OF THE SPECIFICATIONS.

PART 1 - GENERAL

1.01 SUMMARY

- A. THIS SECTION INCLUDES ALL PLUMBING INCLUDING DOMESTIC WATER PIPING, SANITARY WASTE AND VENT PIPING, PLUMBING FIXTURES AND SPECIALTIES INSIDE THE BUILDING.
- B. PLUMBING FIXTURES SHALL BE INSTALLED AS REQUIRED TO COMPLY WITH ALL FEDERAL, STATE, LOCAL AND ALL OTHER APPLICABLE PLUMBING CODES.
- C. FIXTURES SHALL BE PROVIDED BY CONTRACTOR AS SCHEDULED ON THE DRAWINGS. MANUFACTURER'S CATALOG DESIGNATIONS FOR FIXTURES ARE SPECIFIED ON THE DRAWINGS TO ESTABLISH STANDARDS FOR QUALITY, PERFORMANCE AND MATERIALS. ALL FIXTURES SHALL BE STANDARD WHITE IN COLOR.
- D. FIXTURES SHALL BE MOUNTED AT STANDARD HEIGHTS EXCEPT FOR HANDICAPPED FIXTURES WHICH SHALL BE MOUNTED PER APPLICABLE ADA HANDICAPPED ACCESSIBILITY AND BARRIER FREE CODES.

1.02 PERFORMANCE REQUIREMENTS

- A. PROVIDE COMPONENTS AND INSTALLATION CAPABLE OF PRODUCING PIPING SYSTEMS WITH THE FOLLOWING MINIMUM WORKING PRESSURE RATINGS, UNLESS OTHERWISE INDICATED:
1. DOMESTIC WATER DISTRIBUTION PIPING: 125 PSIG.
  2. SOIL, WASTE AND VENT PIPING: 10-FOOT HEAD OF WATER.

1.03 SUBMITTALS

- A. PRODUCT DATA: FOR PIPE, TUBE, FITTINGS AND COUPLINGS.
- B. PRODUCT DATA: INCLUDE SELECTED FIXTURE AND TRIM, FITTINGS, ACCESSORIES, APPLIANCES, APPURTENANCES, EQUIPMENT AND SUPPORTS. INDICATE MATERIALS, FINISHES, DIMENSIONS, CONSTRUCTION DETAILS AND FLOW-CONTROL RATES FOR EACH TYPE OF FIXTURE INDICATED.
- C. WATER SAMPLES: SPECIFIED IN "CLEANING" ARTICLE IN PART 3.
- D. FIELD TEST REPORTS: INDICATE AND INTERPRET TEST RESULTS FOR COMPLIANCE WITH PERFORMANCE REQUIREMENTS.

1.04 QUALITY ASSURANCE

- A. PIPING MATERIALS SHALL BEAR LABEL, STAMP, OR OTHER MARKINGS OF SPECIFIED TESTING AGENCY.

1.05 COORDINATION

- A. COORDINATE ROUGHING-IN AND FINAL PLUMBING FIXTURE LOCATIONS. VERIFY THAT FIXTURES CAN BE INSTALLED TO COMPLY WITH ORIGINAL DESIGN AND REFERENCED STANDARDS.

PART 2 - PRODUCTS

2.01 PLUMBING SPECIALTIES

- B. DOMESTIC WATER SHUT -OFF VALVES SHALL BE BRONZE, FULL-PORT VALVES WITH TEFLON SEATS AND AN INSULATED HANDLE.
- C. NICKEL -BRASS OR CHROME PLATED ESCUTCHEONS SHALL BE PROVIDED ON ALL EXPOSED PIPES WHERE PIPES PASS THROUGH A WALL OR CEILING IN A FINISHED ROOM.
- D. ALL WASTE AND VENT PIPING SHALL CONFORM TO IMC 2018 AND IPC 2018.
- E. DOMESTIC WATER PIPING ABOVE GRADE SHALL BE TYPE '1' COPPER WITH FITTINGS JOINED BY A NON-LEAD BEARING SOLDER.
- F. ALL WATER PIPING ABOVE GRADE SHALL BE INSULATED WITH PREFORMED 1-INCH FIBERGLASS INSULATION WITH VAPOR BARRIER.

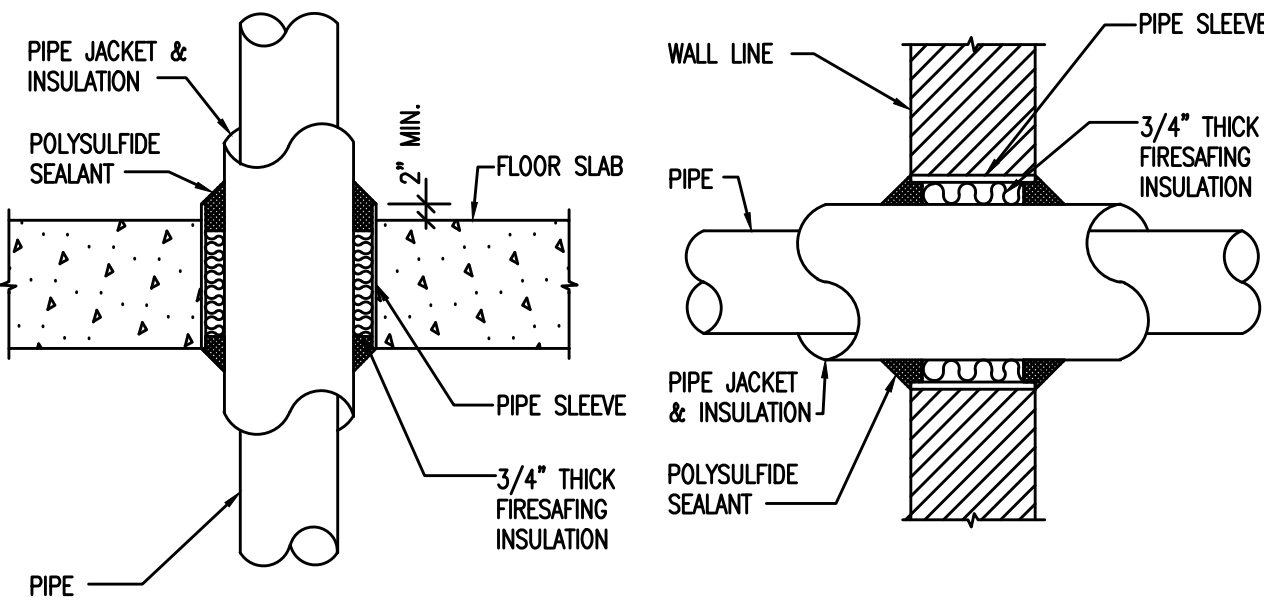
PART 3 - EXECUTION

3.01 GENERAL

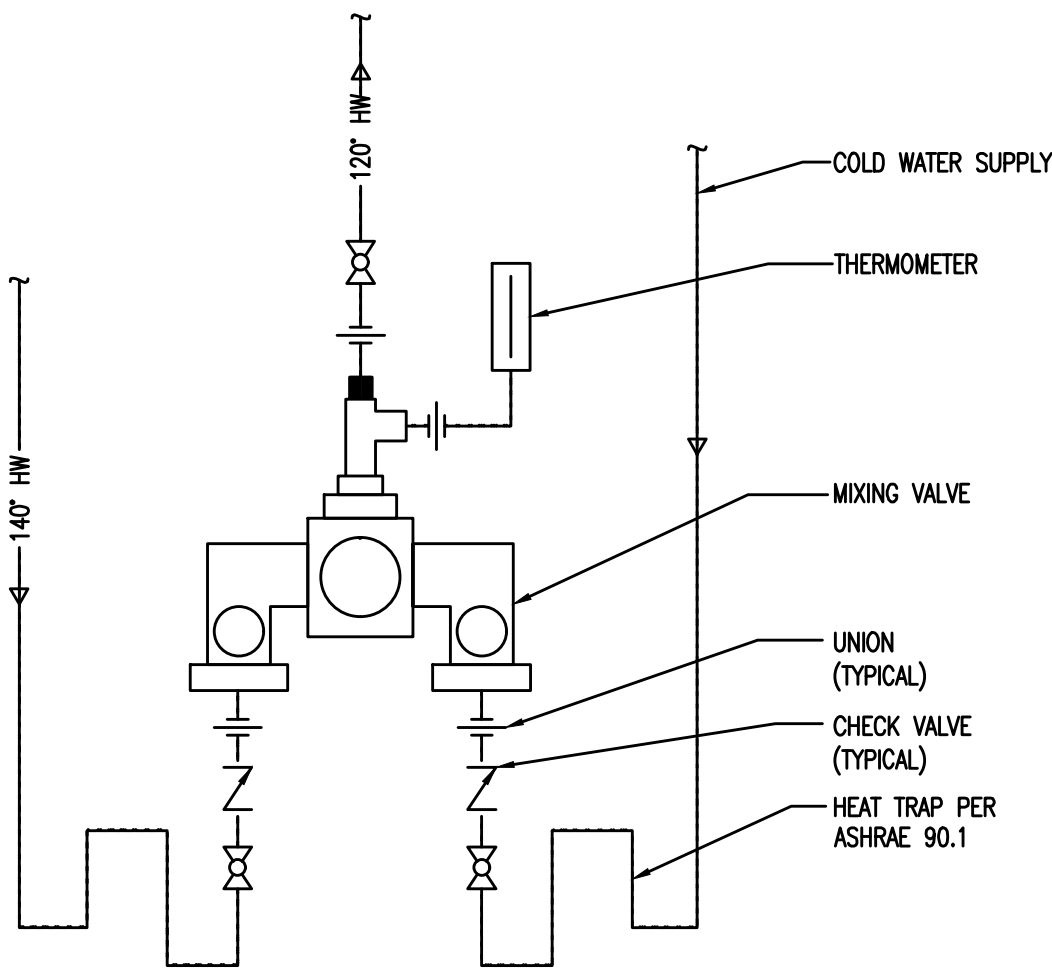
- A. ALL INTERIOR PIPING SHALL BE SUPPORTED PROPERLY FROM JOISTS OR OTHER STRUCTURAL MEMBERS. IN NO CASES SHALL PIPING BE ATTACHED DIRECTLY TO ROOF DECK. ALL REQUIRED PIPE SLEEVES, HANGERS AND SUPPORTS SHALL BE FURNISHED AND INSTALLED IN PROPER AND PERMANENT LOCATIONS. PIPE SHALL NOT PASS THROUGH BEAMS OR OTHER STRUCTURAL MEMBERS.
- B. LEAK TESTS SHALL BE PERFORMED IN THE PRESENCE OF THE GENERAL CONTRACTOR'S JOB SUPERINTENDENT FOR THE FOLLOWING:
1. NEW SOIL, WASTE, AND VENT PIPING IN THE BUILDING SHAI BE TESTED AT A HYDROSTATIC PRESSURE OF 10 FEET OF WATER.
  2. NEW WATER PIPING SHALL BE SUBJECTED TO A HYDROSTATIC PRESSURE OF 130 PSI FOR A PERIOD OF 30 MINUTES.
  3. WHILE THE ABOVE TEST PRESSURES ARE BEING MAINTAINED, A THOROUGH INSPECTION WILL BE MADE AND LEAKS OR DEFECTS SHALL BE REPAIRED OR REPLACED IMMEDIATELY.
- C. ALL ASSOCIATED EQUIPMENT, PIPE, VALVES AND FITTINGS SHALL BE CLEANED OF GREASE, METAL CUTTINGS, AND SLUDGE WHICH MAY HAVE ACCUMULATED BY OPERATION OF THE SYSTEM FOR TESTING. CLEANING REQUIREMENTS SHALL APPLY TO EXISTING, NEW PIPING, AND SYSTEMS.

3.02 CLEANING

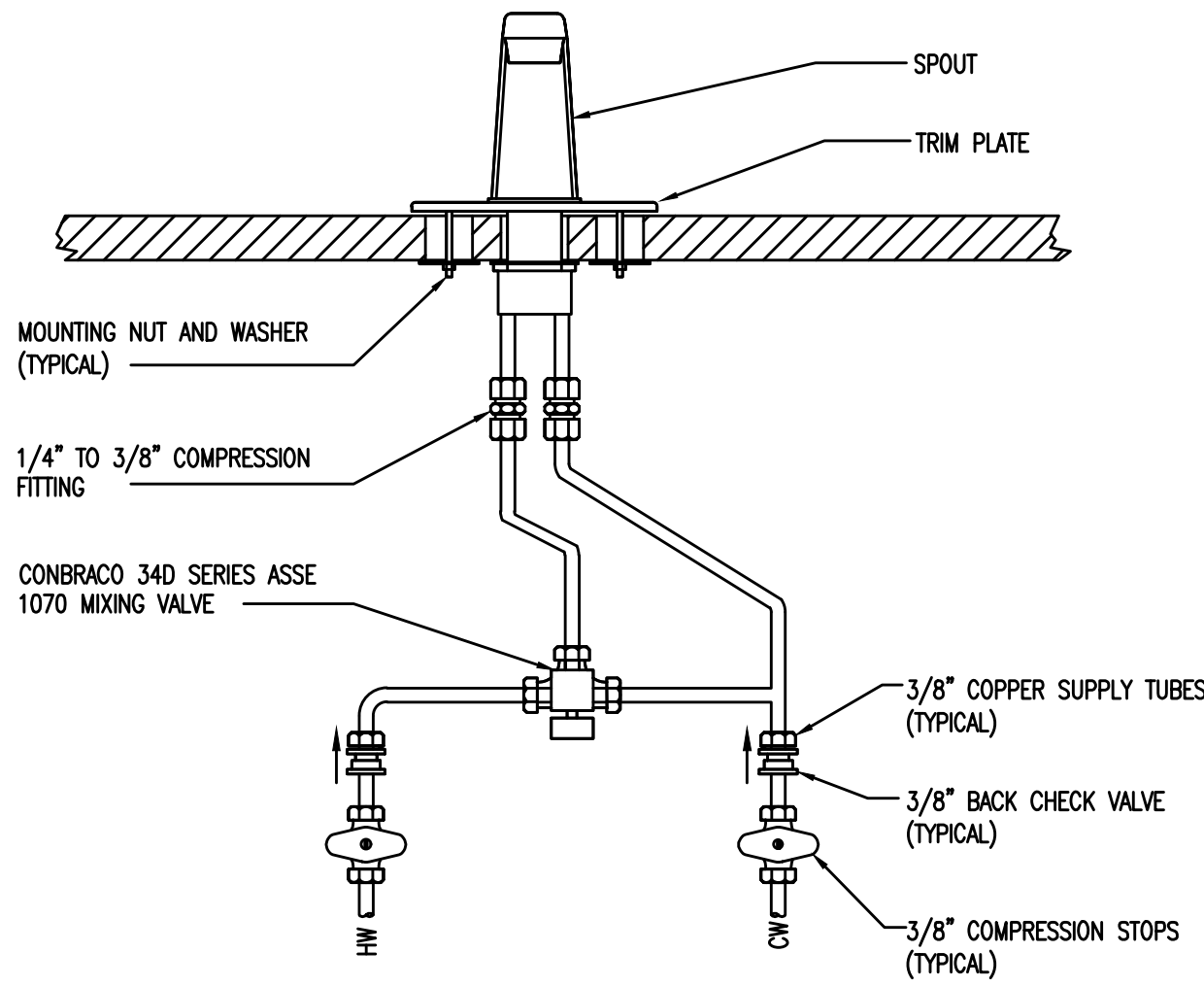
- A. CLEAN AND DISINFECT POTABLE DOMESTIC WATER PIPING AS FOLLOWS:
1. PURGE NEW PIPING AND PARTS OF EXISTING DOMESTIC WATER PIPING THAT HAVE BEEN ALTERED, EXTENDED, OR REPAIRED BEFORE USING.
  2. USE PURGING AND DISINFECTING PROCEDURES PRESCRIBED BY AUTHORITIES HAVING JURISDICTION. IF METHODS ARE NOT PRESCRIBED USE PROCEDURES DESCRIBED IN EITHER AWWA C651 OR AWWA C652 OR AS DESCRIBED BELOW:
    - A. FLUSH PIPING SYSTEM WITH CLEAN POTABLE WATER UNTIL DIRTY WATER DOES NOT APPEAR AT OUTLETS.
    - B. FILL AND ISOLATE SYSTEM ACCORDING TO EITHER OF THE FOLLOWING:
      - 1) FILL SYSTEM OR PART THEREOF WITH WATER/CHLORINE SOLUTION WITH AT LEAST 50 PPM OF CHLORINE. ISOLATE WITH VALVES AND ALLOW TO STAND FOR 24 HOURS.
      - 2) FILL SYSTEM OR PART THEREOF WITH WATER/CHLORINE SOLUTION WITH AT LEAST 200 PPM OF CHLORINE. ISOLATE AND ALLOW TO STAND FOR THREE HOURS.
    - C. FLUSH SYSTEM WITH CLEAN POTABLE WATER UNTIL NO CHLORINE IS IN WATER COMING FROM SYSTEM AFTER THE STANDING TIME.
    - D. SUBMIT WATER SAMPLES IN STERILE BOTTLES TO AUTHORITIES HAVING JURISDICTION. REPEAT PROCEDURES IF BIOLOGICAL EXAMINATION SHOWS CONTAMINATION.
  - B. PREPARE AND SUBMIT REPORTS OF PURGING AND DISINFECTING ACTIVITIES.
  - C. CLEAN INTERIOR OF DOMESTIC WATER PIPING SYSTEM. REMOVE DIRT AND DEBRIS AS WORK PROGRESSES.
- END OF SECTION 22 0000



1 PIPE PENETRATION DETAIL  
SCALE: N.T.S.



3 MIXING VALVE DETAIL  
SCALE: N.T.S.



2 FAUCET PIPING DETIAL  
SCALE: N.T.S.

GOLFTEC  
INTERIOR TENANT IMPROVEMENT

340 SOUTHWEST BLUE PARKWAY  
LEE'S SUMMIT, MO 64063

RELEASE FOR  
CONSTRUCTION  
AS NOTED ON PLANS REVIEW  
DEVELOPMENT SERVICES  
LEE'S SUMMIT, MISSOURI

03/26/2020

Date: Issue: Rev.:

02-07-2020 FOR PERMIT

GT PROJECT NO:

GT-461

PLUMBING DETAILS

P601

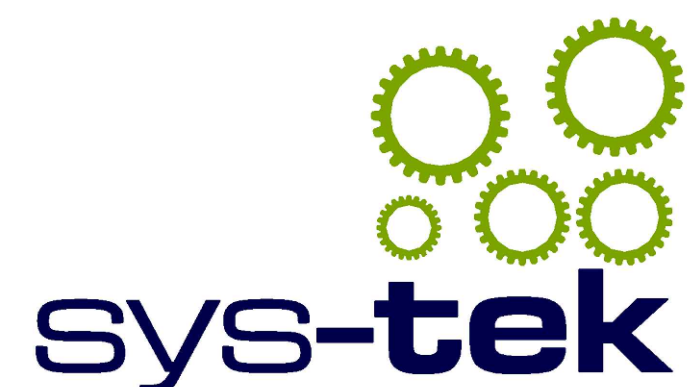


1. SEE ARCHITECTURAL DRAWINGS FOR ADDITIONAL INFORMATION.
2. EXISTING EQUIPMENT LAYOUT IS SCHEMATIC. EXACT LOCATION OF EXISTING DUCT/PIPING AND EQUIPMENT SHALL BE COORDINATED WITH BUILDING STRUCTURE, EQUIPMENT FURNISHED, ARCHITECTURAL DRAWINGS, AND ALL OTHER TRADES PRIOR TO DEMOLITION.
3. PERFORM WORK IN ACCORDANCE WITH THE LATEST EDITIONS, REVISIONS, AMENDMENTS, OR SUPPLEMENTS OF APPLICABLE STATUTES, ORDINANCES, CODES, OR REGULATIONS OF FEDERAL, STATE, AND LOCAL AUTHORITIES HAVING JURISDICTION IN EFFECT ON THE DATE BIDS ARE RECEIVED.
4. WHERE APPROVED STANDARDS HAVE BEEN ESTABLISHED BY OSHA, UNDERWRITERS LABORATORIES, AMERICAN CODES, ASA, ASHRAE, ARI, NEC, SIO, ETC. FIRE INSURANCE REGULATION BODY, NFPA, OR OTHERS, THESE STANDARDS SHALL BE FOLLOWED WHETHER OR NOT INDICATED ON THE DRAWING AND SPECIFICATIONS.
5. COORDINATE CUTTING AND PATCHING WITH GENERAL CONTRACTOR.
6. PATCH AND REPAIR ALL FLOOR AND WALL SURFACES LEFT DAMAGED OR INCOMPLETE FROM REMOVAL OF EXISTING PARTITIONS, MILLWORK, CASEWORK, OR OTHER FIXED ACCESSORIES AND EQUIPMENT. MATCH NEW MATERIALS WITH EXISTING, AS ACCEPTABLE TO THE ARCHITECT.
7. NOTATIONS MAY BE MADE IN VARIOUS PLACES ON THE DRAWINGS TO CALL ATTENTION TO DETAIL WHICH IS REQUIRED. HOWEVER, THESE DRAWINGS ARE NOT INTENDED TO SHOW EACH ITEM TO BE REMOVED. CONTRACTOR SHALL REMOVE ALL MATERIALS RELATED TO THEIR RESPECTIVE TRADES AS REQUIRED TO PERMIT THE CONSTRUCTION OF THE NEW WORK AS SHOWN.
8. THE GENERAL CONTRACTOR SHALL COORDINATE THE EXTENT OF THE REQUIRED DEMOLITION OF THE EXISTING BUILDING AS REQUIRED TO \* ILLUSTRATE THE CONSTRUCTION OF THE PROJECT AS SHOWN AS PART OF THIS WORK.
9. ALL DEMOLITION SHALL BE APPROVED NY THE OWNER/TENANT PRIOR TO COMMENCEMENT AND SHALL BE PERFORMED UNDER REQUIREMENTS AND APPROVAL OF THE LOCAL CODE JURISDICTIONS.
10. ASBESTOS ABATEMENT: CONTRACTOR SHALL NOTIFY BUILDING REPRESENTATIVE IMMEDIATELY IF AND WHEN ANY ITEMS ARE ENCOUNTERED THAT IN ANY WAY MAY APPEAR TO BE OF A HAZARDOUS NATURE. ASBESTOS ABATEMENT IS NOT PART OF THE SCOPE OF THE DESIGN PROFESSIONALS DOCUMENTATION OR RESPONSIBILITY TO SURVEY, IDENTIFY, OR FOR CONSULTATION OF PROPER DISPOSAL.
11. PROTECT ALL EXISTING WORK WHICH IS TO REMAIN AND RESTORE IN AN APPROVED MANNER IF ANY SUCH WORK BECOMES DAMAGED.
12. RUBBISH AND DEBRIS RESULTING FROM THE WORK SHALL BE REMOVED IMMEDIATELY FROM THE SITE IN A SAFE AND LEGAL MANNER BY THE CONTRACTOR.
13. DEMOLITION CONTRACTOR SHALL BE RESPONSIBLE TO CONTACT BUILDING REPRESENTATIVE TO CLARIFY ANY ITEMS NOT SHOWN ON THESE DOCUMENTS OR SHOWN NOT MATCHING FIELD CONDITIONS.
14. CONTRACTOR MAY REUSE EXISTING CODE COMPLIANT CONDUITS, PROVIDING NEW WRING. HOWEVER, THE CONTRACTOR WILL NOT BE COMPENSATED FOR REPLACEMENTS IF THEY ARE NOT CODE COMPLIANT.
15. REMOVE AND DISCONNECT UNUSED AND/OR ABANDON CONDUITS AND FEED BACK TO THE SOURCE.
16. COORDINATE EXISTING CONDITIONS FOR ANY UTILITIES SERVING ADJACENT TENANT SPACES ROUTED THROUGH THIS SPACE. EXISTING UTILITIES SHALL REMAIN OPERABLE FOR ADJACENT TENANTS.

- 1 DEMO ALL ELECTRICAL, POWER, AND OUTLETS BACK TO SOURCE. REPLACE WALL BOARD WHERE OUTLETS WERE LOCATED.
- 2 EXISTING RTU AND DISCONNECT TO REMAIN. REMOVE WIRE AND CONDUIT BACK TO SOURCE. SEE NEW PLANS FOR NEW WIRE AND CONDUIT.
- 3 DEMO ALL LIGHTS, WIRES, AND SWITCHES BACK TO SOURCE.
- 4 REMOVE POWER FEED FROM PANEL "P2" BACK TO CT CABINET ON THE EXTERIOR OF THE BUILDING. RELOCATE BREAKER AND POWER FEED FOR RTU—WEST TO PANEL "P1."

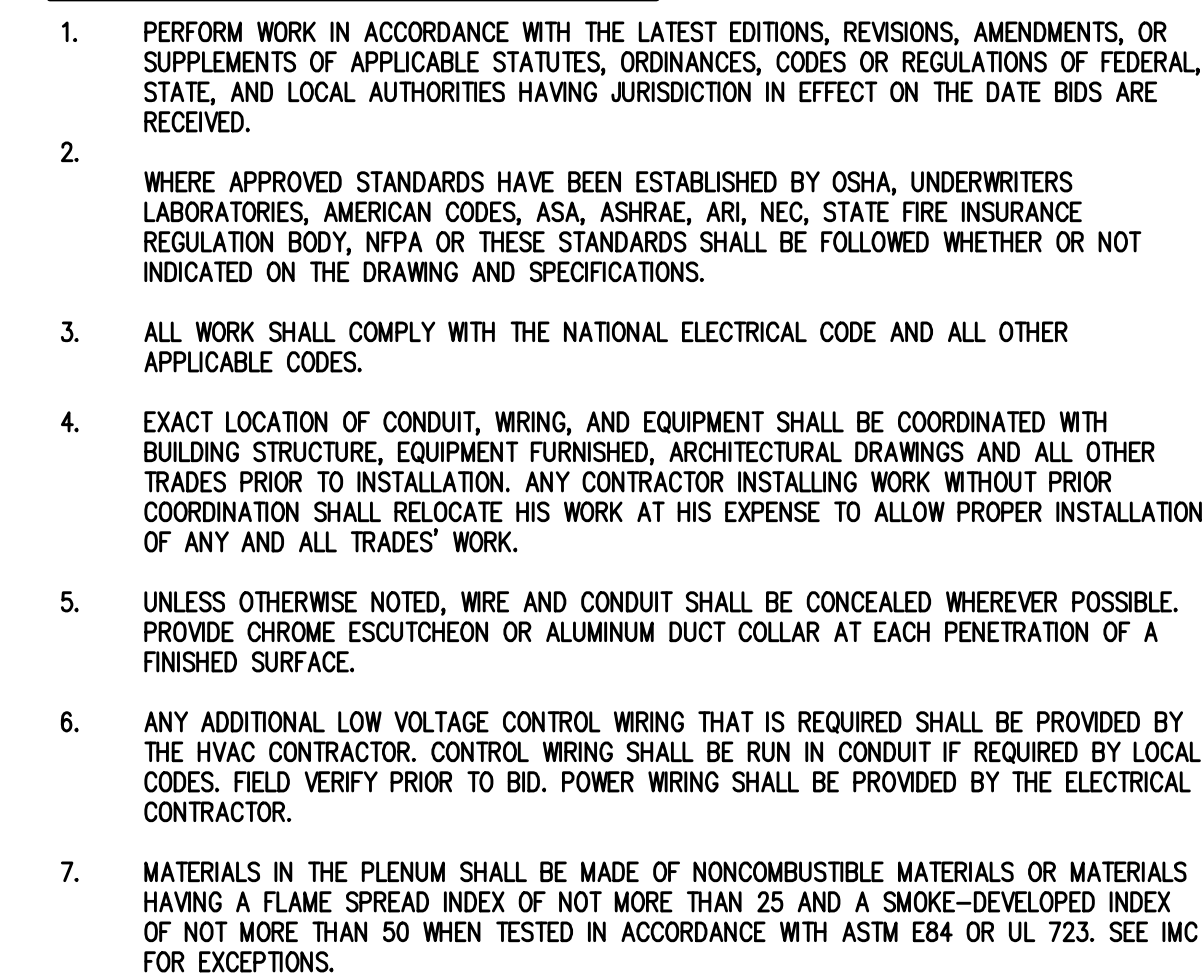


# DE101





- 1 PROVIDE NEW 225 AMP POWER FEED FROM EXISTING CT CABINET/METER TO NEW PANEL "LA." ROUTE (1) #4/0 PER PHASE/NEUTRAL AND (1) #4 GND IN 2" CONDUIT.
- 2 PROVIDE NEW 225 AMP POWER PANEL INSTALLED IN NEW ELECTRICAL ROOM.
- 3 PROVIDE NEW 50 AM POWER FEED FROM PANEL "LA." TO EXISTING RTU DISCONNECT SWITCH ROUTE (1) #8 AWG PER PHASE AND (1) #10 GND IN 1" CONDUIT.



- 1 PROVIDE 1" CONDUIT RECESSED IN WALL CAVITY FROM J-BOX to TV LOCATION for HDMI CABLE. J-BOX to HAVE MUD-RING AND PULL STRING.
- 2 PROVIDE 1-1/2" CONDUIT TO SINGLE GANG J-BOX IN WALL AT 28" A.F.F. FOR CAMERAS. PROVIDE MUD-RING AND PULL STRING. RUN CONDUIT 6" ABOVE WALL.
- 3 PROVIDE CEILING MOUNTED RECEPTACLE AND/OR J-BOX. COORDINATE WITH TENANT ON EXACT LOCATION.
- 4 INSTALL OWNER PROVIDED HDMI CABLES.
- 5 INSTALL ALL TELEVISIONS PER PLAN. VERIFY EXACT LOCATIONS WITH GOLFTREC PRIOR TO INSTALL.
- 6 ELECTRICIAN TO PROVIDE PRICING TO OWNER FOR THE EXTENSION OF THE CARCATION EXTENSION (DMARC) TO THE SERVER ROOM.
- 7 PROVIDE CEILING MOUNTED RECEPTACLE RUN 1/2" OR 3/4" CONDUIT DOWN TO 56" A.F.F.; NO BOX NEEDED. COORDINATE WITH TENANT ON EXACT LOCATION.
- 8 ALL DATA TO BE RUN TO 12-PORT PATCH PANEL IN SERVER ROOM. PATCH PANEL PROVIDED BY G.C.
- 9 INTERNET CABLE TO RUN BACK TO SERVER. CAMERA CABLEING TO RUN FROM DESK TO CAMERAS ONLY.
- 10 ALL OUTLETS AND SWITCHES TO BE GANGED AS CLOSE TOGETHER AS POSSIBLE. DO NOT SCALE PLANS FOR RECEPTACLE AND SWITCH PLACEMENT.
- 11 GENERAL CONTRACTOR TO FURNISH AND INSTALL ALL CAT-6 LOW VOLTAGE CABLE, KEYSTONE JACK TERMINATIONS, AND INSTALL OWNER PROVIDED HDMI CABLES.
- 12 ALL NEW AND EXISTING OUTLETS TO BE POSITIONED/RELOCATED TO BE CLUSTERED TOGETHER 4"0" FROM BACK WALL.
- 13 VERIFY NECESSARY OUTLET PLACEMENT AND QUANTITIES WITH GOLFTREC PM.
- 14 JACKETED/SHIELDED RJ45 JACK TO BE USED AT ALL DATA LOCATIONS WITHIN TRAINING BAYS. GROUNDED TO THE J-BOX AT CAMERA LOCATIONS ONLY. JACK: VCE RJ45 CAT 6A SHIELDED METAL JACK; CONFIRM WITH GOLFTREC PM PRIOR TO ORDER AND INSTALL.
- 15 POWER TO BE PROVIDED FOR EXTERIOR SIGNAGE; COORDINATE WITH GOLFTREC PM.
- 16 ELECTRICAL CONTRACTOR SHALL PROVIDE AND WIRE NEW DUCT SMOKE-DETECTOR (TO BE INSTALLED BY MECHANICAL CONTRACTOR) IN RETURN DUCT DROP.
- 17 PROVIDE REMOTE ANNUNCIATOR FOR DUCT SMOKE DETECTOR WITH VISUAL & AUDIO ALARMS. KEY TEST AND RESET SWITCH. INSTALL AT +72" ON NEAREST COLUMN OR WALL. COORDINATE REQUIREMENTS WITH LOCAL AUTHORITY HAVING JURISDICTION. CONNECT TO 120V CIRCUIT AS SHOWN.

340 SOUTHWEST BLUE PARKWAY  
LEE'S SUMMIT, MO 64063

[illegible]

# E101



1. PERFORM WORK IN ACCORDANCE WITH THE LATEST EDITIONS, REVISIONS, AMENDMENTS, OR SUPPLEMENTS OF APPLICABLE STATUTES, ORDINANCES, CODES, OR REGULATIONS OF THE FEDERAL, STATE, AND LOCAL AUTHORITIES HAVING JURISDICTION IN EFFECT ON THE DATE BIDS ARE RECEIVED.
2. ALL WIRING IN THE INTERIOR SPACE SHALL CONSIST OF EMT AND COPPER CONDUCTORS. ALL CONDUITS LOCATED IN INTERIOR SPACE MUST BE RECESSED IN WALLS OR LOCATED HIGH UP IN CEILING SPACE ABOVE. SURFACE MOUNTED CONDUIT WILL NOT BE ALLOWED UNLESS OTHERWISE NOTED.
3. ALL BRANCH CIRCUIT SHALL CONTAIN A DEDICATED NEUTRAL AND EQUIPMENT GROUND CONDUCTOR. SHARED NEUTRALS ARE NOT PERMITTED.
4. ALL BATTERY OPERATED FIXTURE SHALL BE PROVIDED A DEDICATED HOT SUPPLY FROM THE SAME CIRCUIT SERVING THE NORMAL LIGHTING, AHEAD OF ANY CONTROLS.
5. COORDINATE EXACT LOCATIONS FOR SWITCHES, EQUIPMENT, AND LIGHTS WITH OWNER BEFORE INSTALLATION.
6. MATERIALS IN THE PLENUM SHALL BE MADE OF NONCOMBUSTIBLE MATERIALS OR MATERIALS HAVING A FLAME SPREAD INDEX OF NOT MORE THAN 25 AND A SMOKE-DEVELOPED INDEX OF NOT MORE THAN 50 WHEN TESTED IN ACCORDANCE WITH ASTM E84 OR UL 723. SEE IMC FOR EXCEPTIONS.

- ① PROVIDE CONNECTION TO TENANT SIGN. PROVIDE ALL REQUIRED CONDUITS, WIRING, CONNECTIONS, AND CONTROLS FOR TENANT SIGN. SIGN TO BE CONTROLLED FROM PHOTOCELL AND TIMECLOCK. COORDINATE EXACT REQUIREMENTS AND LOCATIONS WITH THE SIGN CONTRACTOR.
- ② LIGHTING TO BE AUTO ON/AUTO OFF AFTER 20 MINUTES. LIGHTING TO BE CONTROLLED BY SWITCH AND CEILING MOUNTED OCCUPANCY SENSOR. SENSORS IN SPACE TO CONTROL FIXTURE TYPE E AND FIXTURE TYPE C.
- ③ PROVIDE LIGHTING DEVICES AS FOLLOWS:  
  
SINGLE POLE – 15 AMPERE HEAVY DUTY SNAP SWITCH COMPLYING WITH NEMA WD 6 AND WD 1.  
  
DIMMER SWITCHES – ACUITY: nPODM 2P DX  
  
COLOR OF DEVICES AND COVER PLATES BY OWNER.
- ④ LIGHTING TO BE MANUAL ON/AUTO OFF AFTER 20 MINUTES. LIGHTING TO BE CONTROLLED BY DIMMER SWITCH AND CEILING MOUNTED OCCUPANCY SENSOR.
- ⑤ LIGHTING TO BE AUTO ON/AUTO OFF AFTER 20 MINUTES. LIGHTING TO BE CONTROLLED BY WALL MOUNTED OCCUPANCY SENSOR. WALL SENSOR TO CONTROL EXHAUST FAN.
- ⑥ LED LIGHTS IN BAYS TO BE ON TWO SEPARATE SWITCHES. NUMBER ON FIXTURE CORRELATES TO SWITCH. BOTH SWITCHES TO HAVE DIMMERS.
- ⑦ ALPHABETIC/NUMERIC LABEL ON SWITCH INDICATES SWITCH CONTROL FOR LIGHT FIXTURES WITH CORRESPONDING LABEL U.N.O.
- ⑧ INTERLOCK NEW EXHAUST FAN WITH TOILET ROOM LIGHT. COORDINATE WITH MECHANICAL CONTRACTOR.

