



03.23.2020

## project synopsis

Governing Municipality: Lee's Summit, MO  
Governing Code: 2018 IBC, 2018 IPC, 2018 IFGC, 2018 IFC, 2017 NEC, ICC/ANSI A117.1-2017

Stories: one  
Fire Suppression: yes  
Construction Type: II B  
Tenant Area: 2,973 sq.ft.

Occupancy Group: A-3  
Occupant Load: 2,973 sq. ft. / 50 = 60 occupants

Plumbing Fixtures:	water closets (men / women)	lavatories	drinking fountains	service sink
required no. of fixtures (assembly III)	1 per 125/1 per 65	1 per 200	1 per 500	1
total required	2	1	1	1
fixtures provided	2	2	1	1

## general notes

- Double keyed locks are not permitted on any required or marked exit.
- Exit/emergency lighting are subject to an on site inspection.
- Provide min. 3 1/2" batt insulation between conditioned & unconditioned spaces
- Exit doors shall be operable from the inside without the use of a key or any special knowledge or effort
- Provide electrical outlets @ 15' a.f.f. to the lowest outlet per a.d.a.
- Egress illumination will be provided at an intensity of not less than 1 foot candle at floor level.
- Construction materials exposed within plenums shall be noncombustible or shall have flame spread rating of not more than 25 and a smoke development rating of not more than 50.
- Verify 9" address numbers on the front & rear of building per local municipality are existing to remain.
- All electrical outlets within 6' of any sink or water source to be GFCI protected.

## construction notes

- Furniture provided by tenant.
- Furnish and install new restrooms with 67" turning radius w/ 10" max overlap for knee and toe clearance per ADA, wall mounted sink at 34" a.f.f. with wrist blade faucet, 36" and 42" horizontal grab bars at 33"-36" a.f.f. 6" and 12" from corner respectively, 18" vertical grab bar per detail. Include surface mounted toilet paper dispenser, soap dispenser, and paper towel dispenser. Mirror above sink mounted per ADA. Install proper blocking for wall mounted accessories.
- Furnish and install new door in new storefront system. Provide connecting sidewalk from new door to existing sidewalk.
- Storage cabinets and cubbies provided by others.
- Provide required electrical for tenant provided coffee machine.
- Provide required infloor electrical and data for front desk.
- Furnish and install janitor mop basin with 36" stainless steel mop holder with shelf on wall above. Provide blocking in wall as required.
- Furnish and install dual bi-level electric drinking fountain station with bottle fill, Ekay LZ3TLWVSLP with EZH2O bottle filling station. Provide water source and electrical per MEP.
- Furnish and install proper blocking for 48"x60" mirrors mounted 12" a.f.f.
- Tenant provided ballet barres. Provide proper blocking in wall, if necessary.
- Provide required electricity for speakers.
- Provide required electricity and data for security cameras.
- Infill opening w/ 6" metal studs @ 16" o.c. w/ exterior sheathing and EIFS on exterior. Continue new furring on interior side to provide flush wall.
- Remove patch and replace drywall as required after plumbing is installed.
- Install occupancy sign - Maximum occupancy: 60.
- Furnish and install surface mounted fire extinguisher cabinet with white finish and vision panel in door, with (min. 5lb.) 2A-10BC fire extinguisher, bottom at 36" a.f.f. Coordinate location as directed by Fire Marshal.

## symbol legend:

#	door tag	#	elevation
#	construction note	#	wall section
#	partition type	#	enlarged detail
room name	room tag		

## partition legend

- P1** Insulated Interior Partition:  
3-5/8" metal studs @ 16" o.c. to 6" above ceiling with 5/8" gypsum board on both sides and 3-1/2" sound attenuation batt insulation. Stud gauge per supplier.  
\*Utilize DensArmour Plus on plumbing walls
- P2** Plumbing Partition:  
6" metal studs @ 16" o.c. to 6" above ceiling with 5/8" gypsum board on both sides and 6" sound attenuation batt insulation. Stud gauge per supplier.  
\*Utilize DensArmour Plus on plumbing walls
- P3** Interior Partition:  
3-5/8" metal studs @ 16" o.c. to 6" above ceiling with 5/8" gypsum board on both sides. Stud gauge per supplier.
- P4** Furred Out Partition:  
3-5/8" metal studs @ 16" o.c. with 5/8" gypsum board on finish side to underside of deck. Stud gauge per supplier.
- P5** Insulated Interior Partition - full height:  
3-5/8" metal studs @ 16" o.c. full height to underside of deck with deep leg slip track and 5/8" gypsum board on both sides and 3-1/2" sound attenuation batt insulation. Stud gauge per supplier.  
\*Utilize DensArmour Plus on plumbing walls
- P6** Exterior Infill Partition:  
6" metal studs @ 16" o.c. full height to underside of opening with exterior sheathing and EIFS on exterior side. 3-5/8" metal studs @ 16" o.c. 5/8" gypsum board on finish side to underside of deck. Stud gauge per supplier.

- Wall height note: Utilize 3 5/8" metal studs @ 16" o.c. to an un-braced height of 13'-8", at heights to 26' use 6" 20 ga. studs @ 16" o.c., install 2 rows of black iron in walls over 25'-0" - adjust stud size and spacing as required for allowable L/240 deflection for 5 psf wind load. Verify stud gauge, spacing, and reinforcing with supplier.
- Expansion joint note: Expansion joints shall be installed at a max of 30'-0". Joints shall also be located to coordinate with anticipated building movement, structural elements, and substrate transitions.
- Wet wall note: Utilize Dens-Armour plus in all plumbing wet walls, walls receiving ceramic tile, and all walls adjacent to plumbing walls or where anticipated to be in contact with moisture.

## demo partition legend:

- PR** existing walls to be removed.
- Demo** existing door and frame to be removed

## demo general notes

- Existing light fixtures shall be removed in effected areas and stock piled for owners use as required.
- Existing plumbing and associated fixtures, where newly exposed and unused, shall be removed, stubbed, and capped as required.
- Existing low voltage wiring and associated fixtures, where newly exposed and unused, shall be removed, stubbed, and capped as required.
- Existing electrical wiring and receptacles, where newly exposed and unused, shall be removed, stubbed, and capped as required.
- Existing mechanical system and ductwork, where newly exposed and unused, shall be removed, stubbed, and capped as required.
- All doors and frames in demo'd walls shall be removed in effected areas and reused where possible or stock piled for building owners use as required.

## demo construction notes

- Remove walls per plan. Patch and repair walls as needed.
- Demo door per plan and stockpile for owner's use.

## room finish notes

Flooring:  
Rooms 101, 104-108: sealed concrete  
Rooms 102-103: tenant provided dance floor

Base:  
All rooms - Johnsonite, 4" traditional cove vinyl base, color: tbd

Walls:  
All areas of work to receive (1) coat primer & (2) coats paint, eggshell finish, color tbd. Paint - Sherwin Williams, ProMar 200 latex. Primer - Sherwin Williams, PrepRite High Build latex primer/surfacer  
Rooms 105-106 - epoxy wall paint above tile, color tbd. Sherwin Williams, ProIndustrial Precatalyzed waterbased epoxy; 12" x 24" ceramic wall tile (CWT-1) to 4'-0". Grout, mapei, keracolor sanded, spray on grout sealer - easycare grout shield

Plastic Laminate:  
Countertops - color tbd  
Cabinet Face - color tbd

Doors:  
paint - color tbd. Sherwin Williams, ProMar 200 latex.

Ceiling:  
Rooms 104-107: 12" x 24" ACT grid (CLG-1)  
Rooms 101-103, 108: exposed ceiling, painted, color tbd. Sherwin Williams, low VOC waterborne acrylic dryfall paint, flat (1 coat primer, 2 coats paint - to cover)

## door and hardware notes

Door 01:  
3' x 7' x 1-3/4" glass door in storefront frame. Provide egress hardware, closer, and wall stop.

Doors 02-03, 07:  
3' x 7' x 1-3/4" solid core birch wood door in welded hollow metal frame, painted. Provide passage set and wall stop.

Door 04:  
3' x 7' x 1-3/4" solid core birch wood door in welded hollow metal frame, painted. Provide office lockset and wall stop.

Doors 05-06:  
3' x 7' x 1-3/4" solid core birch wood door in welded hollow metal frame, painted. Provide privacy set, closer and wall stop.

Door EX-1:  
existing door and hardware to remain.

## reflected ceiling notes

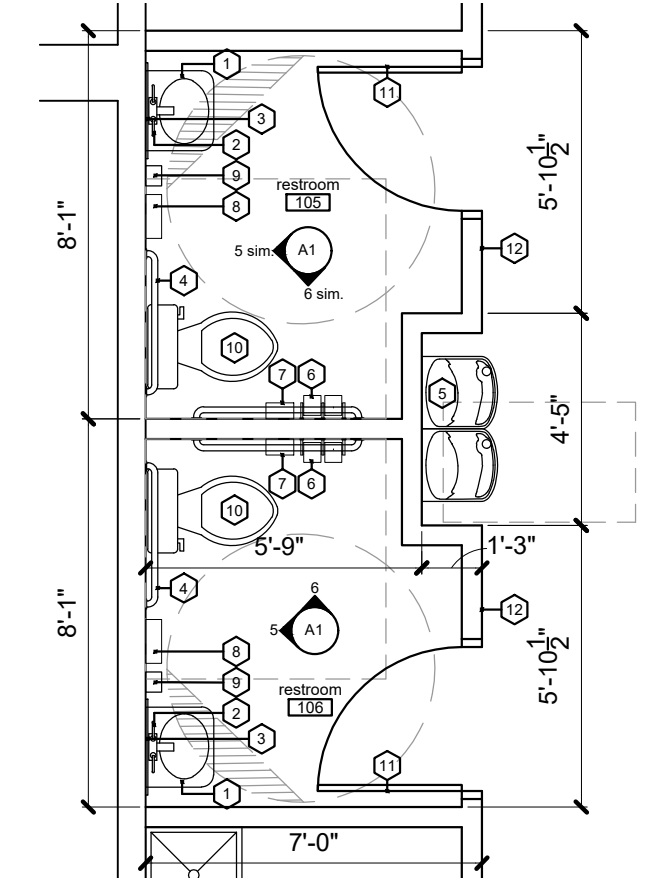
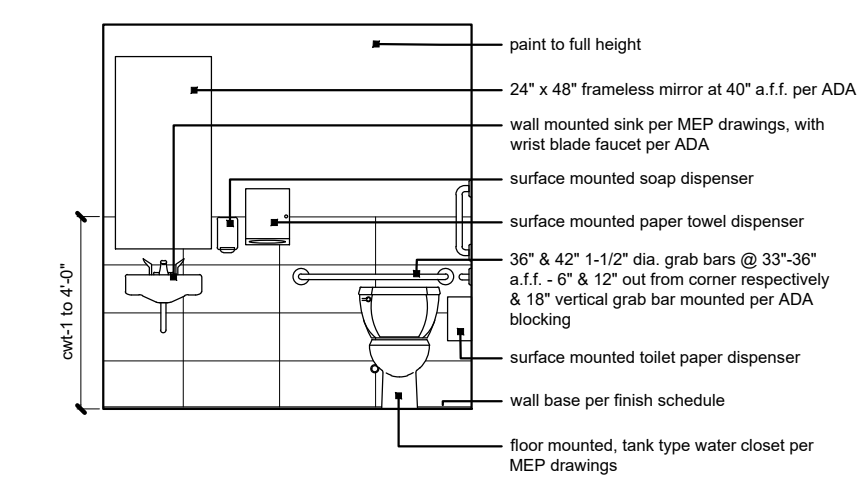
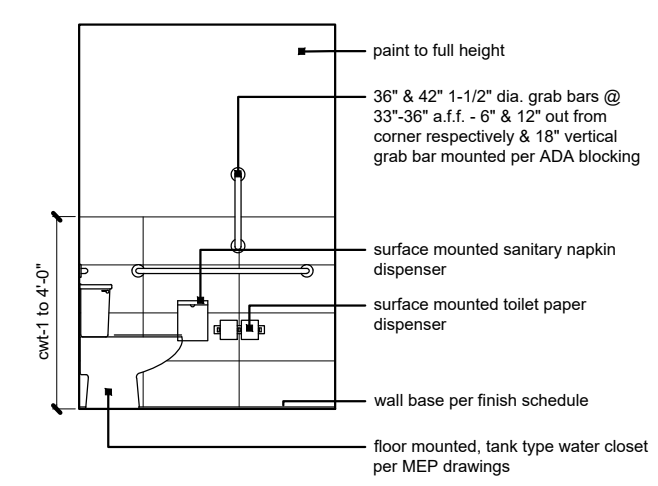
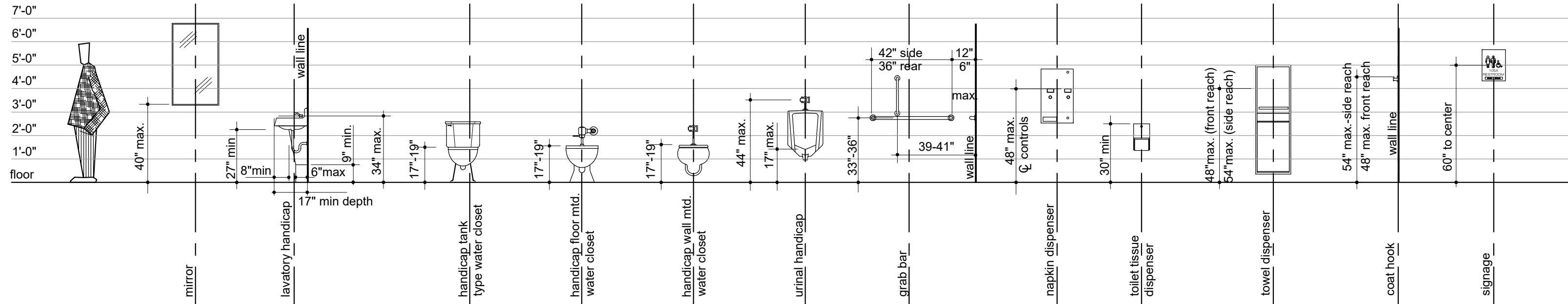
- Install light fixtures per plan and MEP.
- Refer to engineering drawings for HVAC and electrical fixtures, emergency fixture locations, specifications and details.

## reflected ceiling legend

- 2 x 4 lay-in LED light fixture
- CLG-1: Donn DX System, 15/16" Exposed Tee Grid System, white, with 2x4 USG flat tile radar
- suspended linear light fixture

## restroom fixtures

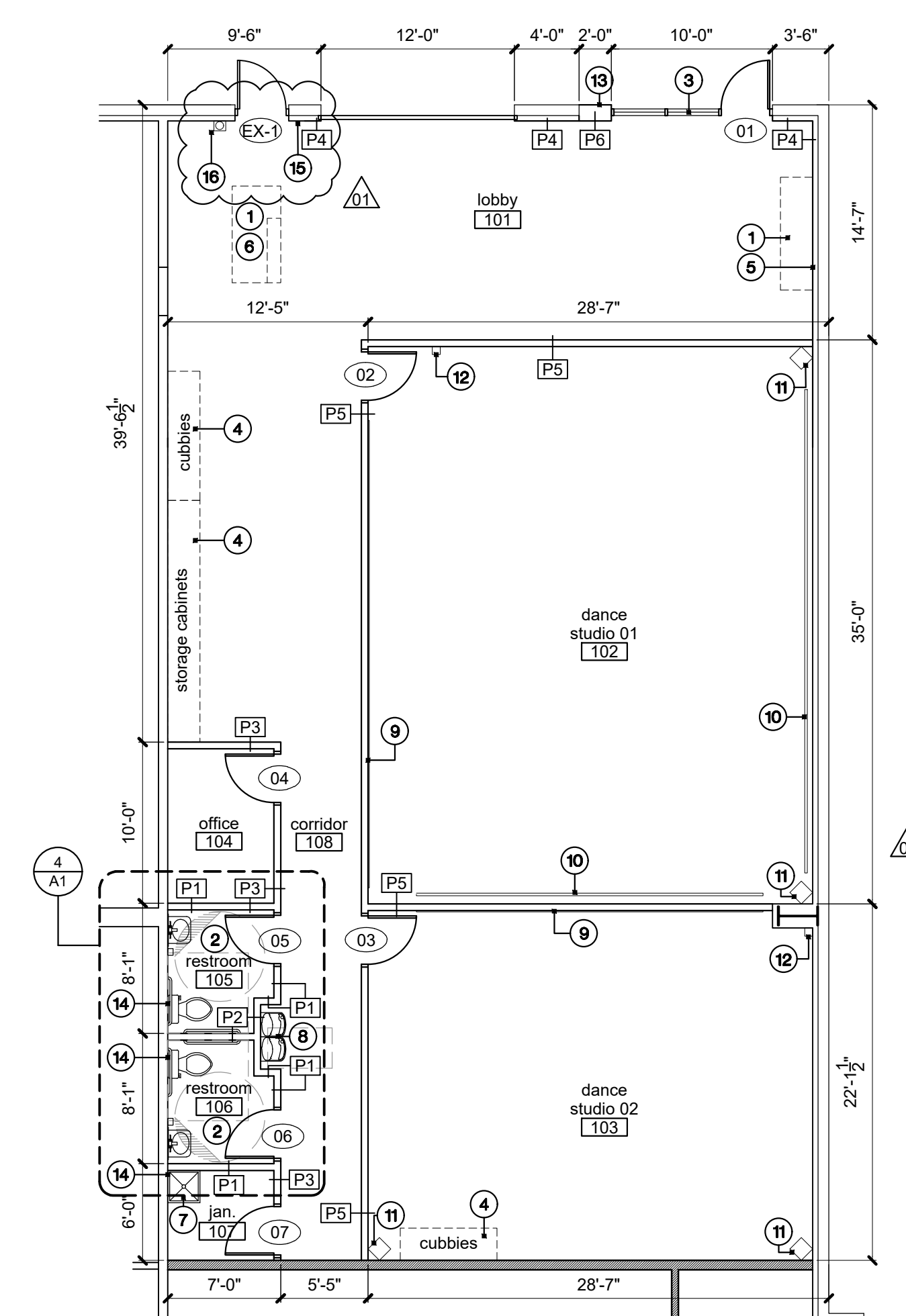
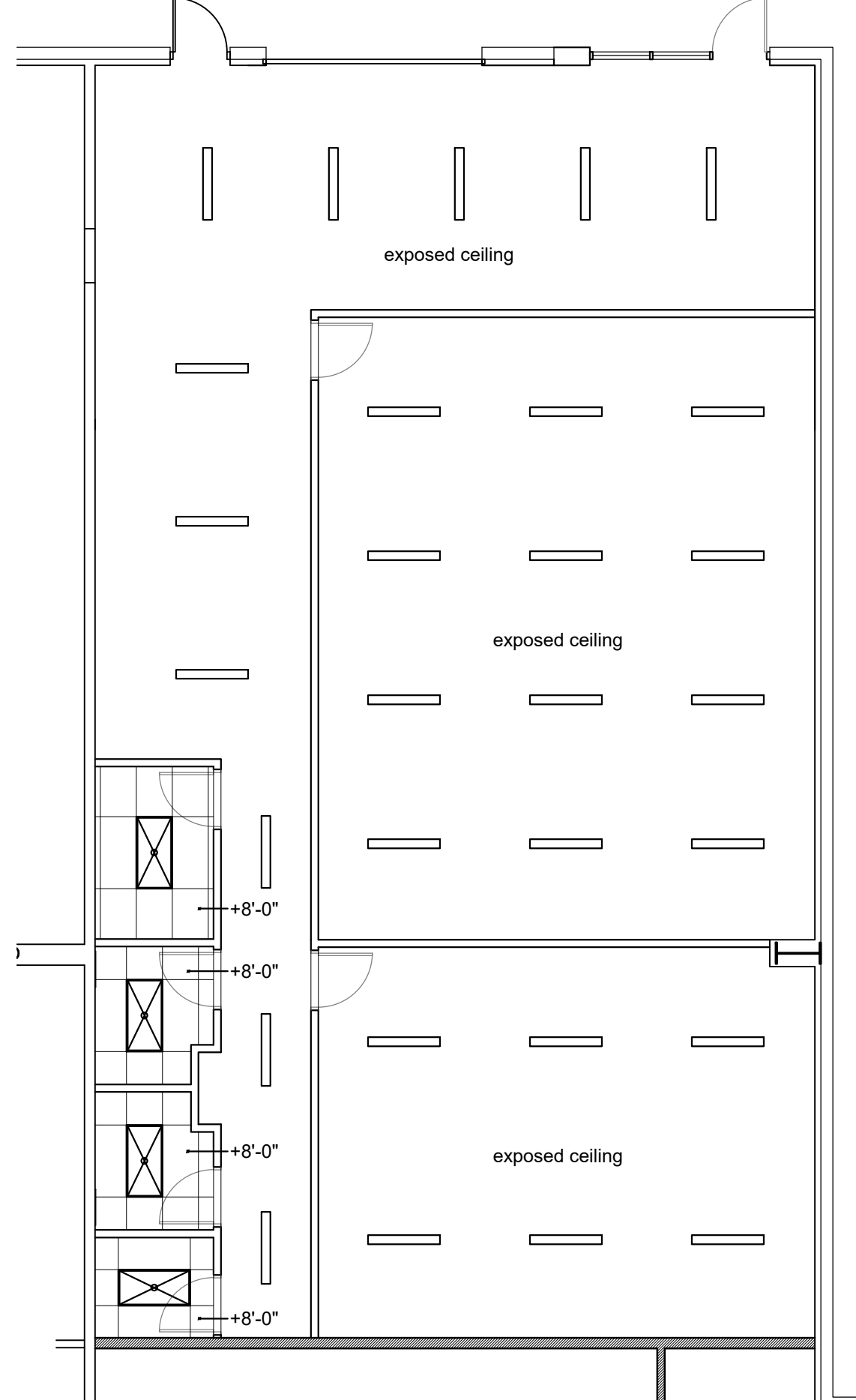
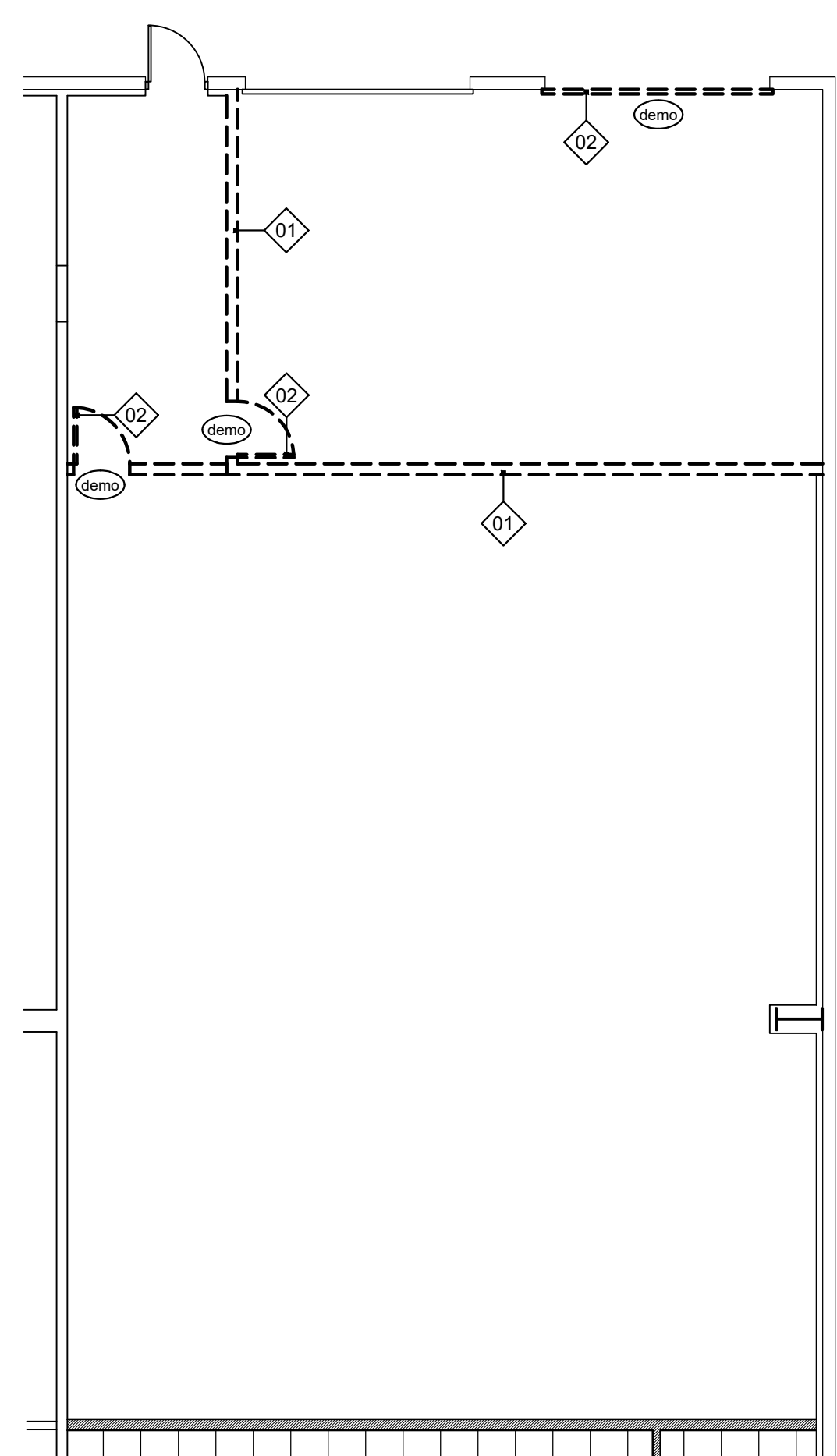
- Wall mounted sink per MEP drawings. Mounted per ADA.
- Wrist blade faucet per ADA.
- Wall mounted frameless mirror 24" x 48"
- 18" ADA grab bar - stainless steel  
36" ADA grab bar - stainless steel  
42" ADA grab bar - stainless steel
- High-low drinking fountain mounted per ADA
- Surface mounted toilet paper dispenser - Bobrick B-6667
- Surface mounted sanitary napkin disposal - Bobrick Contura B-270
- Surface mounted stainless steel paper towel dispenser - Bobrick B-262
- Surface mounted stainless steel soap dispensers - Bobrick B-2111
- ADA height floor mounted, tank type toilet (white)
- Coat hook at backside of door per ADA.
- Provide unisex/ADA compliant toilet signage.



**6 Restroom Elevation**  
scale: 1/4" = 1'-0"

**5 Restroom Elevation**  
scale: 1/4" = 1'-0"

**4 Restroom Plan**  
scale: 1/4" = 1'-0"  
north



**3 Demo Plan**  
scale: 1/8" = 1'-0"  
north

**2 Reflected Ceiling Plan**  
scale: 1/8" = 1'-0"  
north

**1 Floor Plan**  
scale: 1/8" = 1'-0"  
north

a tenant finish for  
**J31 Dance Center**  
2710 Independence Ave.  
Lee's Summit, Missouri 64064

date 03.09.2020  
drawn by DAE  
checked by DAE  
revisions 03.23.2020 01

sheet number  
**A1**  
drawing type permit  
project number 20045



OCCUPANCY SENSOR SCHEDULE							
TAG	QTY (CONFIRM WITH PLANS)	MANUFACTURER	MODEL	MOUNTING	TYPE	TIME DELAY SETTING	NOTES
OS-1	4	LEVITON	MDS10-ID	WALL	PASSIVE INFRARED	15 MIN	

LIGHT FIXTURE SCHEDULE									
TAG	QUANTITY (CONFIRM WITH PLANS)	DESCRIPTION	VOLTAGE	MOUNTING	LAMPING			MANU/SERIES	VA
					QTY	WATTAGE	TYPE/COLOR TEMP		
A	12	LED HIGH BAY FIXTURE.	120/277	PENDANT	--	100	LED/13800LM	EIKO#BAY-E	100
B	4	2'-0"X4'-0" SPECIFICATION GRADE RECESSED LED TROFFER. STEEL HOUSING WITH WHITE POWDER COAT FINISH, FLAT WHITE STEEL DOOR. PATTERN 12, 125" THICK LENS. 0-10 VOLT DIMMABLE DRIVER.	120/277	RECESSED GRID	--	40	LED/5000LM	EIKO#BLP	40
C	2	EXTERIOR LED FLOOD LIGHT WITH INTEGRAL MOTION SENSOR. MOUNT AT 8'-0" +/- AFF.	120/277	SURFACE	--	85	LED/10,000LM	LUMARK#NNFLD	85
E	3	SURFACE MOUNTED SELF-CONTAINED EMERGENCY LIGHTING FIXTURE FOR WALL INSTALLATION. NI-CAD BATTERY, UV-STABLE PLASTIC HOUSING WITH WHITE FINISH. TWO FULLY ADJUSTABLE MR16 LAMPS WITH CLEAR PROTECTIVE LAMP LENS. PUSH TO TEST SWITCH. LED INDICATOR LIGHTS FOR AC SUPPLY. BATTERY CHARGE STATUS. 90 MINUTES OF BATTERY OPERATION.	120/277	SURFACE	2	1	LED	DUAL-LITE#EV	5
ER	2	TWIN HEAD REMOTE LED EMERGENCY FIXTURE WITH SINGLE MOUNTING PLATE. SUITABLE FOR WET LOCATIONS. COORDINATE VOLTAGE WITH BATTERY.		SURFACE	2	1.5	LED	LITHONIA ELA-T-QWP	0
X	2	SINGLE FACE LED EXIT SIGN. THERMOPLASTIC HOUSING, RED LETTERING. SEALED NI-CAD HIGH OUTPUT BATTERY SUITABLE FOR POWERING INTEGRAL LED HEADS AND REMOTE LED HEADS. INTEGRAL EMERGENCY LAMPS. MINIMUM 90 MINUTE CAPACITY. DRAWINGS INDICATE ARROWS.	120	WALL	3	6	LED	LITHONIA LHQM LED HO	5

AIR TERMINAL DEVICES SCHEDULE								
PLAN MARK	QUANTITY	MANUFACTURER	MODEL	SERVICE	MOUNT TYPE	BORDER SIZE	NECK SIZE	VOLUME DAMPER
RG-1	2	TITUS	PAR	RETURN	LAY-IN	12"X12"	6"	NO
SD-1	4	TITUS	OMNI	SUPPLY	LAY-IN	12"X12"	6"	YES

EXHAUST FAN SCHEDULE								
UNIT CALLOUT	MFG	MODEL NO.	UNIT INFORMATION				NOTES	
			TYPE	EXT STATIC (IN WC)	FLOW (CFM)	HP		VOLT/ PHASE
EF-1	PANASONIC	FV05-11	INLINE	0.3	75	1/20	120/1	--

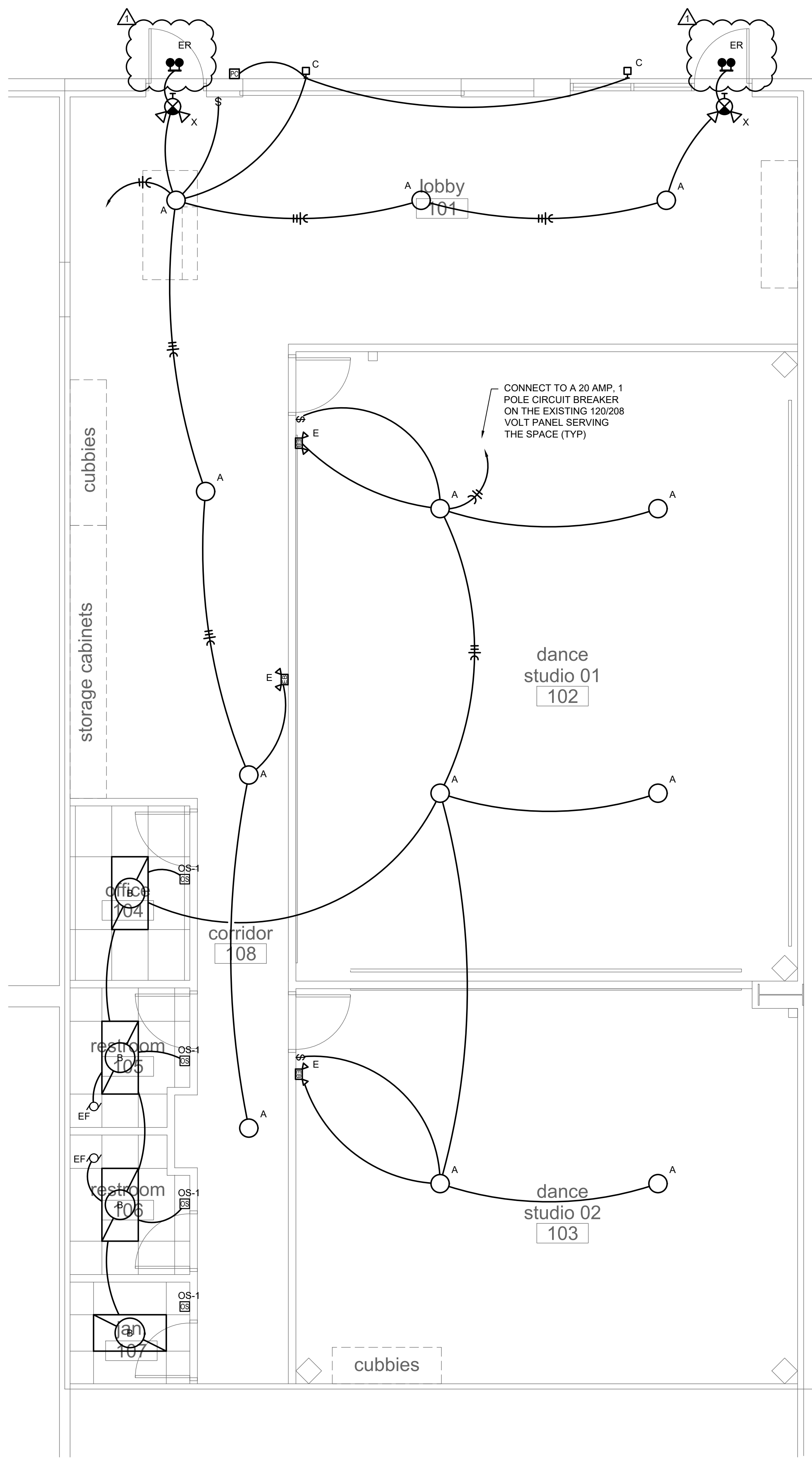
INSTALL DIFFUSER IN NEW THE CEILING. EXTEND A BRANCH DUCT. SIZE TO MATCH DIFFUSER NECK SIZE UP TO THE EXISTING SUPPLY MAIN DUCT (TYP)

INSTALL DIFFUSER IN NEW THE CEILING. STUB BRANCH DUCT INTO CORRIDOR AS SHOWN. BALANCE DIFFUSER TO THE AIRFLOW SHOWN.

INSTALL NEW EXHAUST FAN IN CEILING. EXTEND 4"Ø EXHAUST DUCT UP THROUGH ROOF ABOVE. TERMINATE WITH APPROVED FITTING EQUIPPED WITH INSECT SCREEN.

HVAC GENERAL NOTE:  
 1. THE EXISTING ROOFTOP UNITS, SUPPLY AND RETURN DUCT AND DIFFUSERS TO REMAIN TO SERVE THE SPACE. PROVIDE NEW SUPPLY AND RETURN GRILLES AND EXHAUST FANS AS SHOWN IN THE AREAS WITH CEILINGS. CONNECT SUPPLY DUCTS FROM NEW SUPPLY GRILLES TO THE EXISTING SUPPLY DUCT MAIN. FIELD VERIFY LOCATION.

2 PARTIAL FLOOR PLAN - HVAC  
 1/4"=1'-0"



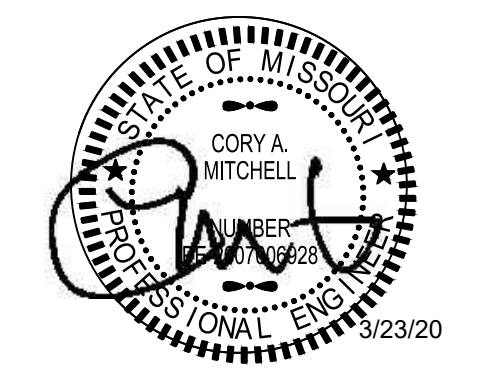
1 FLOOR PLAN - LIGHTING  
 1/4"=1'-0"



3026 SW East US 40 Hwy  
 Blue Springs, MO 64014  
 (816)427-5913



**Welch and Mitchell**  
 consulting engineers  
 4370 west 109th street, suite 203  
 overland park, kansas 66211  
 p.913 544 1627



Seal

Tenant Finish for  
**J31 Dance Center**  
 2710 Independence Avenue  
 Lee's Summit, Missouri 64064

Rev.	Issue	Date
	Permit	3/11/20
1	City Comments	3/23/20

HVAC & LIGHTING PLAN
2013400
ME101
Permit

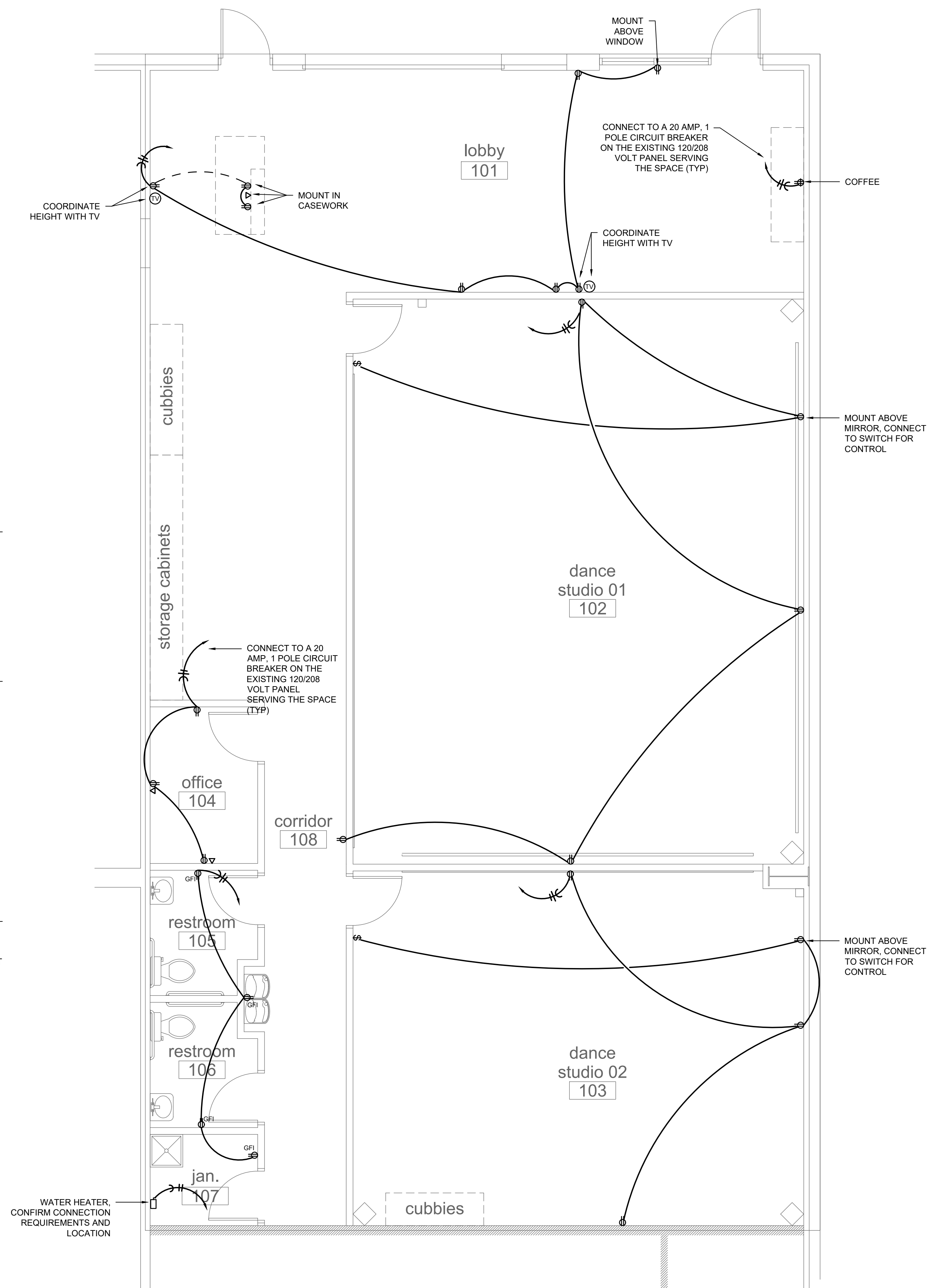
Rev.	Issue	Date
	Permit	3/11/20
1	City Comments	3/23/20

POWER PLAN

2013400

ME102

Permit

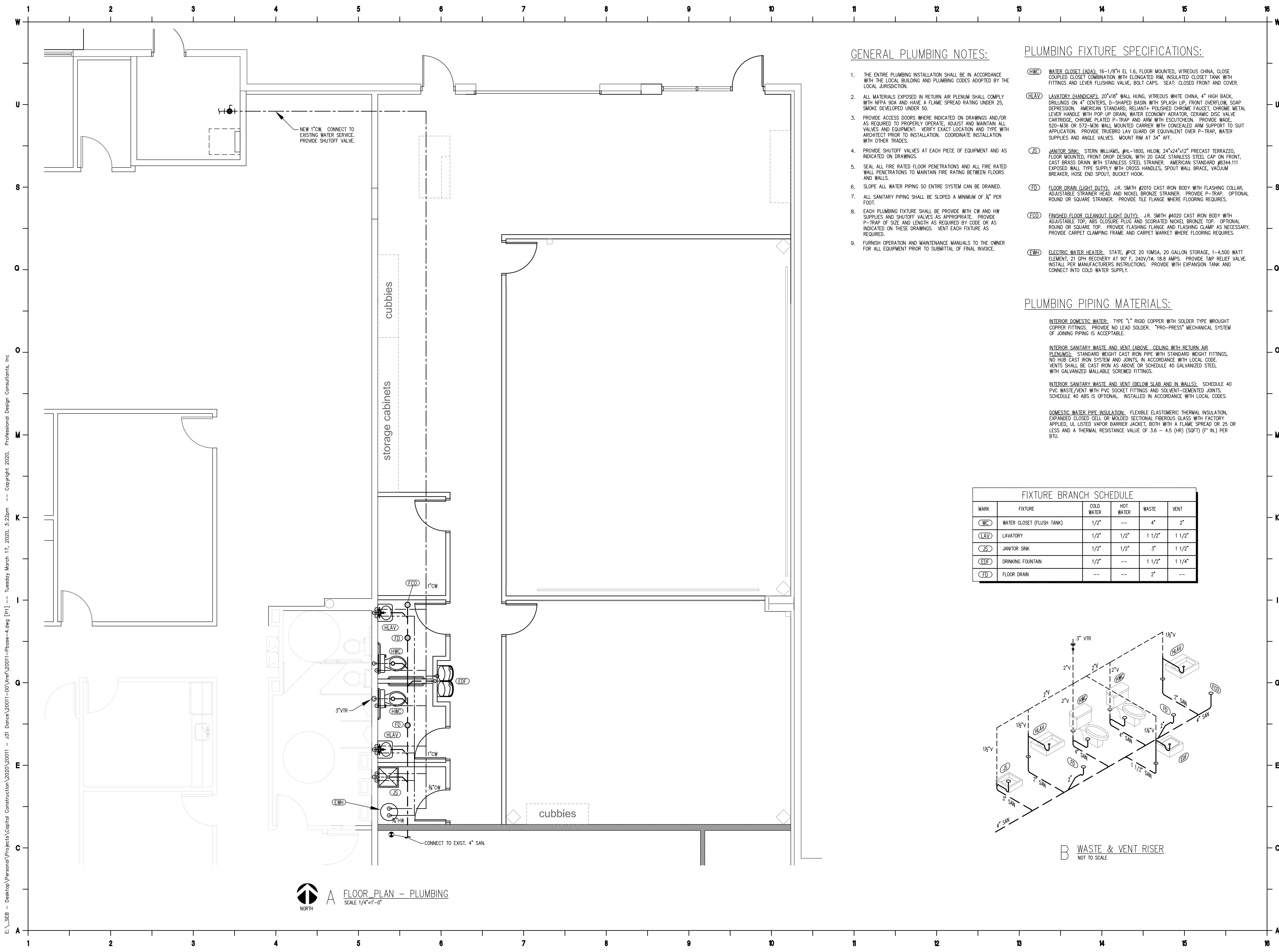


GENERAL		COMMUNICATIONS	
	ELECTRICAL NOTE REFERENCE		TELEPHONE OUTLET
	REVISION NOTE REFERENCE		DATA OUTLET
	CONNECT TO EXISTING WORK		TELEPHONE/DATA OUTLET
	DETAIL REFERENCE - NO./SHEET NO.		ABOVE COUNTER DEVICE, MOUNT 5" ABOVE BACKSPASH OR COUNTER TOP, WHICHEVER IS HIGHER.
<b>CONDUIT AND WIRE</b>			TELEVISION OUTLET
	CONDUIT HOMERUN TO PANEL NOTED WITH (2)#12 AND (1)#12 AWG GROUND UNLESS NOTED OTHERWISE. SHORT TICK MARKS INDICATE CONDUCTORS. LONG MARKS INDICATE NEUTRAL CONDUCTORS.		PLYWOOD BOARD FOR EQUIPMENT MOUNTING
	GROUND WIRE. #12 AWG UNLESS NOTED OTHERWISE.	<b>POWER DEVICE AND CONTROLS</b>	
	CONDUIT CONCEALED IN WALL OR ABOVE CEILING WITH (2)#12 AND (1)#12 AWG GROUND UNLESS NOTED OTHERWISE.		DISCONNECT SWITCH. 30/30NF INDICATES AMPERAGE, NUMBER OF POLES, AND FUSING. NF = NON FUSED. MATCH CIRCUIT VOLTAGE. 240 VOLT, 3 POLE, 30 AMP NON FUSED IF BLANK.
	CONDUIT BELOW GRADE OR FLOOR WITH WITH (2)#12 AND (1)#12 AWG GROUND UNLESS NOTED OTHERWISE.		MOTOR
<b>WIRING DEVICES</b>			PANELBOARD
NOTE: REFER TO SPECIFICATIONS FOR MOUNTING HEIGHTS NOT LISTED.			
	SIMPLEX, DUPLEX, AND QUAD RECEPTACLE. MOUNT AT 18" AFF TO CENTER OF DEVICE UNLESS NOTED OTHERWISE.		CONTACTOR
	ABOVE COUNTER RECEPTACLE, MOUNT 5" ABOVE BACKSPASH OR COUNTER TOP, WHICHEVER IS HIGHER.		PHOTOCELL
	RECEPTACLE DESIGNATIONS: GFI - GROUND FAULT CIRCUIT INTERRUPTER RECEPTACLE WP - WEATHER RESISTANT RECEPTACLE WITH 'IN-USE' COVER. U - DUPLEX RECEPTACLE WITH (2) USB CHARGING PORTS, LEVITON T5832 OR EQUAL		JUNCTION BOX
	WALL SWITCH, SINGLE POLE. MOUNT AT 48" AFF TO CENTER OF DEVICE UNLESS NOTED OTHERWISE.		PUSHBUTTON
	WALL SWITCH DESIGNATIONS: 3 - THREE POLE SWITCH 4 - FOUR-WAY WALL SWITCH D - WALLBOX DIMMER		TRANSFORMER
	MOTION SENSOR, CEILING MOUNTED. DESIGNATION INDICATES TYPE - REFER TO OCCUPANCY SENSOR SCHEDULE		TIMECLOCK
	MOTION SENSOR, WALL MOUNTED. DESIGNATION INDICATES TYPE - REFER TO OCCUPANCY SENSOR SCHEDULE. MOUNT AT 48" AFF TO CENTER OF DEVICE	<b>LIGHTING</b>	
	MULTI-SERVICE FLOOR BOX		WALL/CEILING MOUNTED EMERGENCY LIGHTING UNIT
	FLOOR BOX W/DUPLEX RECEPTACLE		LIGHT FIXTURE
	NEMA RECEPTACLE, DESIGNATION INDICATES NEMA TYPE.		NIGHT LIGHT FIXTURE
			CEILING MOUNTED SURFACE/RECESSED LIGHT
			CEILING MOUNTED SURFACE/RECESSED WALLWASH LIGHT. ARROW INDICATES DIRECTION.
			LIGHT FIXTURE WITH EMERGENCY BALLAST
			TRACK LIGHT
			POLE MOUNTED SITE LIGHT FIXTURE
			CEILING/WALL MOUNTED EXIT LIGHT. SHADING INDICATES FACES, ARROWS AS INDICATED

2 ELECTRICAL SYMBOLS  
NO SCALE

1 FLOOR PLAN - POWER  
1/4"=1'-0"





**GENERAL PLUMBING NOTES:**

- THE ENTIRE PLUMBING INSTALLATION SHALL BE IN ACCORDANCE WITH THE LOCAL BUILDING AND PLUMBING CODES ADOPTED BY THE LOCAL JURISDICTION.
- ALL MATERIALS EXPOSED IN RETURN AIR PLENUM SHALL COMPLY WITH NFPA 90A AND HAVE A FLAME SPREAD RATING UNDER 25, SMOKE DEVELOPED UNDER 50.
- PROVIDE ACCESS DOORS WHERE INDICATED ON DRAWINGS AND/OR AS REQUIRED TO PROPERLY OPERATE, ADJUST AND MAINTAIN ALL VALVES AND EQUIPMENT. VERIFY EXACT LOCATION AND TYPE WITH ARCHITECT PRIOR TO INSTALLATION. COORDINATE INSTALLATION WITH OTHER TRADES.
- PROVIDE SHUTOFF VALVES AT EACH PIECE OF EQUIPMENT AND AS INDICATED ON DRAWINGS.
- SEAL ALL FIRE RATED FLOOR PENETRATIONS AND ALL FIRE RATED WALL PENETRATIONS TO MAINTAIN FIRE RATING BETWEEN FLOORS AND WALLS.
- SLOPE ALL WATER PIPING SO ENTIRE SYSTEM CAN BE DRAINED.
- ALL SANITARY PIPING SHALL BE SLOPED A MINIMUM OF 1/8" PER FOOT.
- EACH PLUMBING FIXTURE SHALL BE PROVIDED WITH CW AND HW SUPPLIES AND SHUTOFF VALVES AS APPROPRIATE. PROVIDE P-TRAP OF SIZE AND LENGTH AS REQUIRED BY CODE OR AS INDICATED ON THESE DRAWINGS. VENT EACH FIXTURE AS REQUIRED.
- FURNISH OPERATION AND MAINTENANCE MANUALS TO THE OWNER FOR ALL EQUIPMENT PRIOR TO SUBMITTAL OF FINAL INVOICE.

**PLUMBING FIXTURE SPECIFICATIONS:**

- (HWC)** WATER CLOSET (ADA): 16-1/8" H EL. 1.6, FLOOR MOUNTED, VITREOUS CHINA, CLOSE COUPLED CLOSET COMBINATION WITH ELONGATED RIM, INSULATED CLOSET TANK WITH FITTINGS AND LEVER FLUSHING VALVE, BOLT CAPS. SEAT: CLOSED FRONT AND COVER.
- (HLAV)** LAVATORY (HANDICAP): 20"x18" WALL HUNG, VITREOUS WHITE CHINA, 4" HIGH BACK, DRILLINGS ON 4" CENTERS, D-SHAPED BASIN WITH SPLASH LIP, FRONT OVERFLOW, SOAP DEPRESSION, AMERICAN STANDARD, RELIANT+ POLISHED CHROME FAUCET, CHROME METAL LEVER HANDLE WITH POP UP DRAIN, WATER ECONOMY AERATOR, CERAMIC DISC VALVE CARTRIDGE, CHROME PLATED P-TRAP AND ARM WITH ESCUTCHEON. PROVIDE WADE, 520-M36 OR 572-M36 WALL MOUNTED CARRIER WITH CONCEALED ARM SUPPORT TO SUIT APPLICATION. PROVIDE TRUEBRO LAV GUARD OR EQUIVALENT OVER P-TRAP, WATER SUPPLIES AND ANGLE VALVES. MOUNT RIM AT 34" AFF.
- (JS)** JANITOR SINK: STERN WILLIAMS, #JL-1900, H/L/W, 24"x24"x12" PRECAST TERRAZZO, FLOOR MOUNTED, FRONT DROP DESIGN, WITH 20 GAGE STAINLESS STEEL CAP ON FRONT, CAST BRASS DRAIN WITH STAINLESS STEEL STRAINER. AMERICAN STANDARD #B344.111 EXPOSED WALL TYPE SUPPLY WITH CROSS HANDLES, SPOUT WALL BRACE, VACUUM BREAKER, HOSE END SPOUT, BUCKET HOOK.
- (FD)** FLOOR DRAIN (LIGHT DUTY): J.R. SMITH #2010 CAST IRON BODY WITH FLASHING COLLAR, ADJUSTABLE STRAINER HEAD AND NICKEL BRONZE STRAINER. PROVIDE P-TRAP. OPTIONAL ROUND OR SQUARE STRAINER. PROVIDE TILE FLANGE WHERE FLOORING REQUIRES.
- (FCD)** FINISHED FLOOR CLEANOUT (LIGHT DUTY): J.R. SMITH #4020 CAST IRON BODY WITH ADJUSTABLE TOP, ABS CLOSURE PLUG AND SCORATED NICKEL BRONZE TOP. OPTIONAL ROUND OR SQUARE TOP. PROVIDE FLASHING FLANGE AND FLASHING CLAMP AS NECESSARY. PROVIDE CARPET CLAMPING FRAME AND CARPET MARKET WHERE FLOORING REQUIRES.
- (EWH)** ELECTRIC WATER HEATER: STATE, #PCE 20 10MSA, 20 GALLON STORAGE, 1-4500 WATT ELEMENT, 21 GPH RECOVERY AT 90° F, 240V/1A, 18.8 AMPS. PROVIDE T&P RELIEF VALVE. INSTALL PER MANUFACTURERS INSTRUCTIONS. PROVIDE WITH EXPANSION TANK AND CONNECT INTO COLD WATER SUPPLY.

**PLUMBING PIPING MATERIALS:**

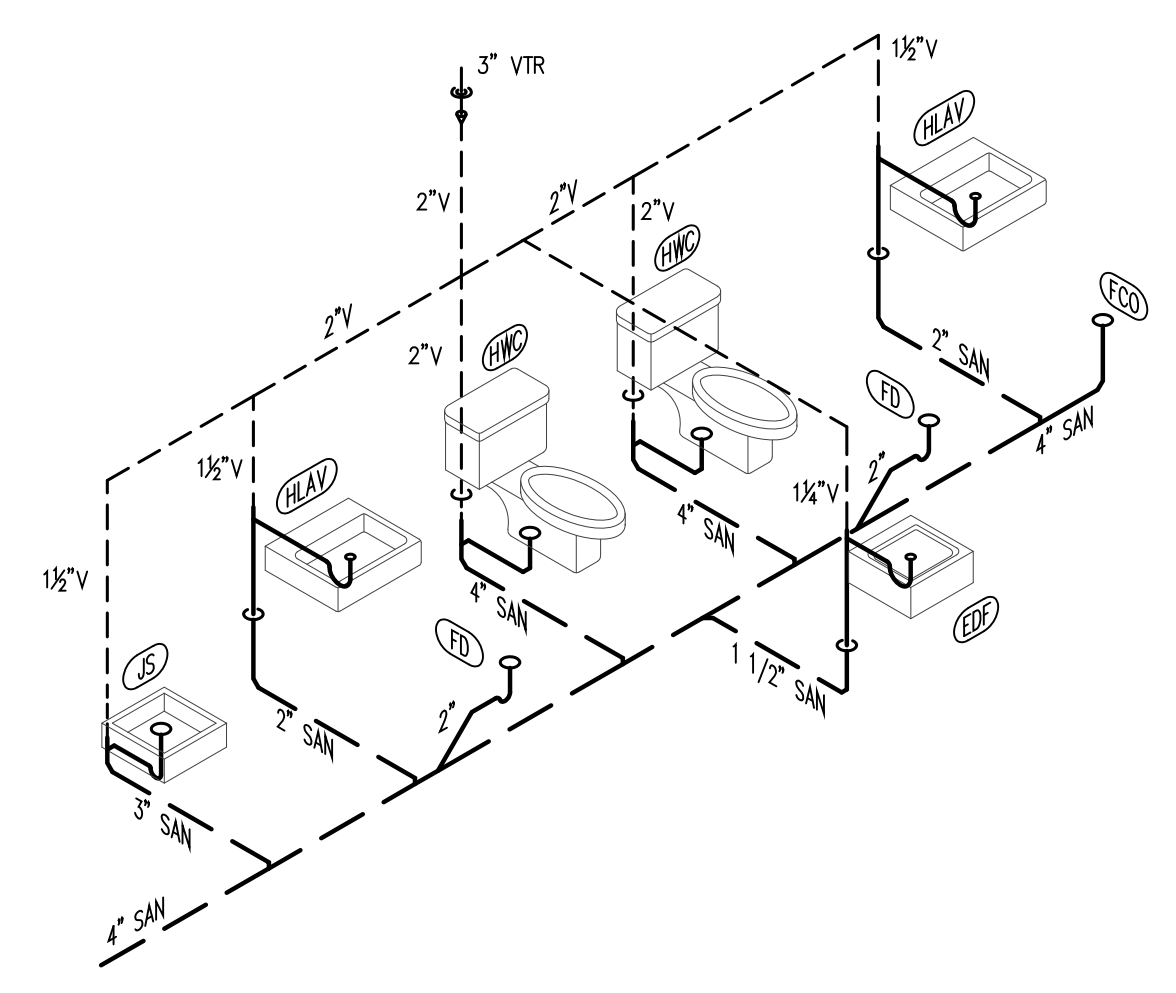
**INTERIOR DOMESTIC WATER:** TYPE 1/2" RIGID COPPER WITH SOLDER TYPE WROUGHT COPPER FITTINGS. PROVIDE NO LEAD SOLDER. "PRO-PRESS" MECHANICAL SYSTEM OF JOINING PIPING IS ACCEPTABLE.

**INTERIOR SANITARY WASTE AND VENT (ABOVE CEILING WITH RETURN AIR PLENUMS):** STANDARD WEIGHT CAST IRON PIPE WITH STANDARD WEIGHT FITTINGS, NO HUB CAST IRON SYSTEM AND JOINTS. IN ACCORDANCE WITH LOCAL CODE. VENTS SHALL BE CAST IRON AS ABOVE OR SCHEDULE 40 GALVANIZED STEEL WITH GALVANIZED MALLABLE SCREWED FITTINGS.

**INTERIOR SANITARY WASTE AND VENT (BELOW SLAB AND IN WALLS):** SCHEDULE 40 PVC WASTE/VENT WITH PVC SOCKET FITTINGS AND SOLVENT-CEMENTED JOINTS. SCHEDULE 40 ABS IS OPTIONAL. INSTALLED IN ACCORDANCE WITH LOCAL CODES.

**DOMESTIC WATER PIPE INSULATION:** FLEXIBLE ELASTOMERIC THERMAL INSULATION, EXPANDED CLOSED CELL OR MOLDED SECTIONAL FIBROUS GLASS WITH FACTORY APPLIED, UL LISTED VAPOR BARRIER JACKET, BOTH WITH A FLAME SPREAD OR 25 OR LESS AND A THERMAL RESISTANCE VALUE OF 3.6 - 4.5 (HR) (SOFT) (F" IN.) PER BTU.

FIXTURE BRANCH SCHEDULE					
MARK	FIXTURE	COLD WATER	HOT WATER	WASTE	VENT
(HWC)	WATER CLOSET (FLUSH TANK)	1/2"	---	4"	2"
(HLAV)	LAVATORY	1/2"	1/2"	1 1/2"	1 1/2"
(JS)	JANITOR SINK	1/2"	1/2"	3"	1 1/2"
(EDF)	DRINKING FOUNTAIN	1/2"	---	1 1/2"	1 1/4"
(FD)	FLOOR DRAIN	---	---	2"	---



**A FLOOR PLAN - PLUMBING**  
SCALE: 1/4"=1'-0"  
NORTH

**J31 DANCE CENTER**

**TENANT FINISH**

2710 Independence Ave.  
Lee's Summit, Missouri 64064

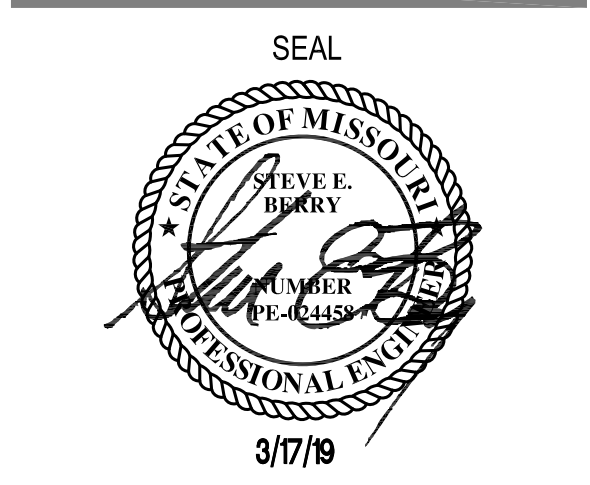
ISSUED FOR:

Permit: 03 March, 2020

**Steve E. Berry, PE**

Consulting Engineer  
Mechanical • Electrical • Plumbing

10463 S. Ellen  
Mulvane, Kansas 67110  
316.347.1248



E:\\_SEB - Desktop\Personal\Projects\Copitol Construction\2020\20011 - J31 Dance\20011-00\Drawings\20011-Phase-4.dwg [P1] -- Tuesday March 17, 2020, 3:22pm -- Copyright 2020, Professional Design Consultants, Inc